



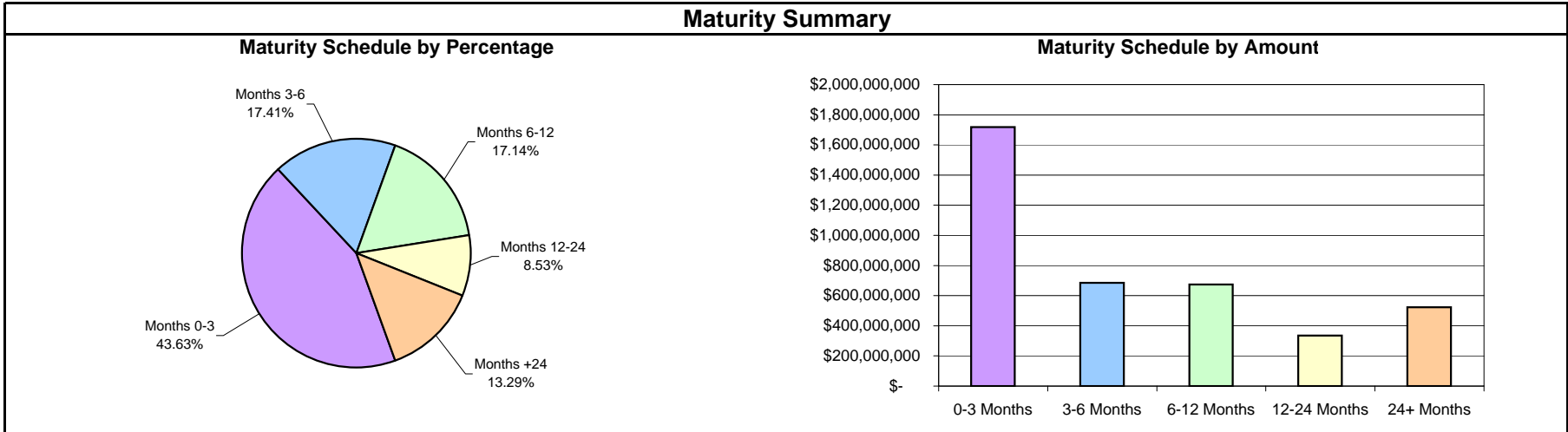
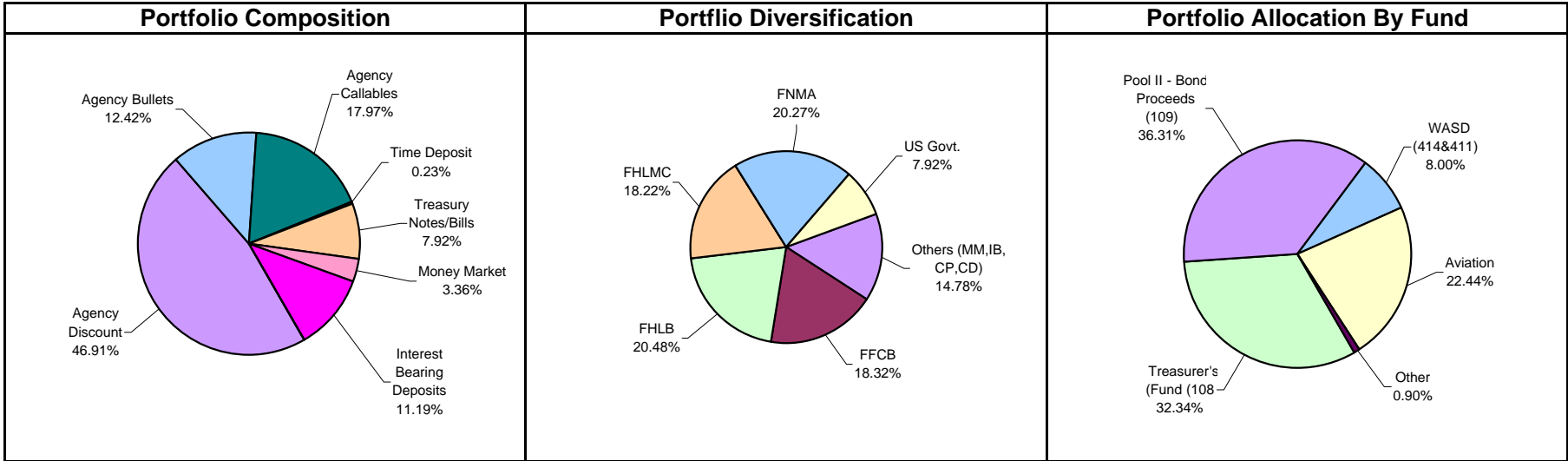
Monthly Summary Investment Report

For the Period Ended

September 30, 2009

 **First Southwest Asset Management**

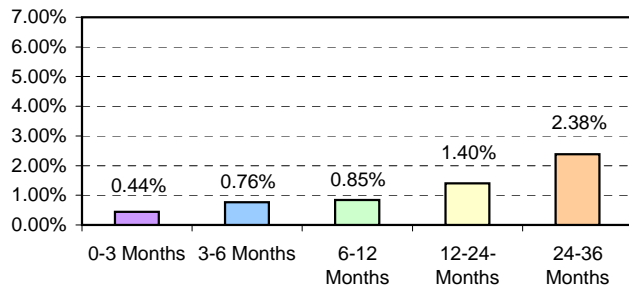
Miami-Dade County Total Portfolio Summary September 30, 2009



**Miami-Dade County
Summary Statement
September 30, 2009**

Portfolio Summary					
	Current 9/30/2009	Previous Month 8/31/2009	Change from Prior Month	Prior Quarter 6/30/2009	Change from Prior Quarter
Par Value	\$ 3,945,597,326.64	\$ 3,401,627,603.54	\$ 543,969,723.10	\$ 3,640,189,278.21	\$ 305,408,048.43
Book Value	\$ 3,942,277,874.26	\$ 3,398,611,994.64	\$ 543,665,879.62	\$ 3,635,145,137.12	\$ 307,132,737.14
Market Value	\$ 3,951,374,816.21	\$ 3,407,297,449.28	\$ 544,077,366.93	\$ 3,644,744,865.87	\$ 306,629,950.34
Market Value as a % of Book Value	100.23%	100.26%	-0.02%	100.26%	-0.03%
Accrued Interest	\$ 9,523,685.77	\$ 10,915,150.64	\$ (1,391,464.87)	\$ 14,619,083.49	\$ (5,095,397.72)
Total Value (Market Value+ Accrued Interest)	\$ 3,960,898,501.98	\$ 3,418,212,599.92	\$ 542,685,902.06	\$ 3,659,363,949.36	\$ 301,534,552.62
Interest Earned (Current Month)	\$ 2,914,147.20	\$ 3,349,544.09	\$ (435,396.89)	\$ 3,509,231.86	\$ (595,084.66)
Interest Earned Fiscal YTD (10/1 - 9/30)	\$ 61,425,916.96	\$ 58,511,769.76	\$ 2,914,147.20	\$ 51,707,619.81	\$ 9,718,297.15
Unrealized Gain (Loss)	\$ 9,096,941.95	\$ 8,685,454.64	\$ 411,487.31	\$ 9,599,728.75	\$ (502,786.80)
Weighted Average Days to Maturity	283.01	272.85	10.16	284.37	-1.36
Weighted Average Days to Call	161.14	155.74	5.4	178.6	-17.46
Yield to Maturity	0.91%	1.00%	-0.10%	1.12%	-0.21%
Earned Income Yield for Period	0.98%	1.11%	-0.13%	1.21%	-0.23%
Earned Income Yield for Year to Date	1.63%	1.68%	-0.05%	1.80%	-0.17%

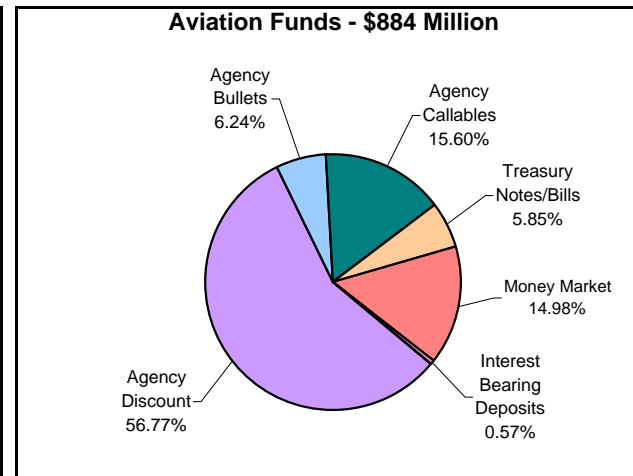
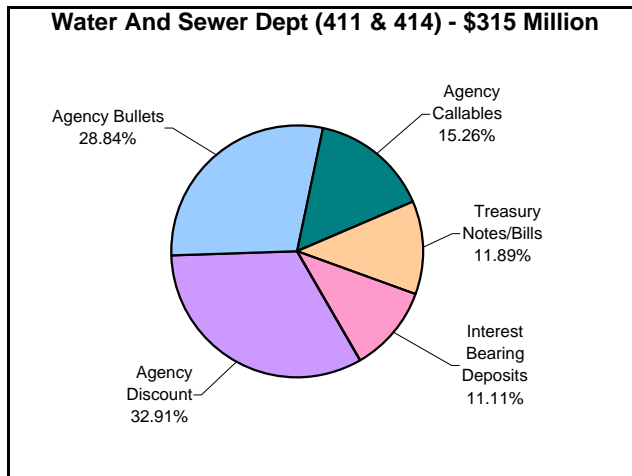
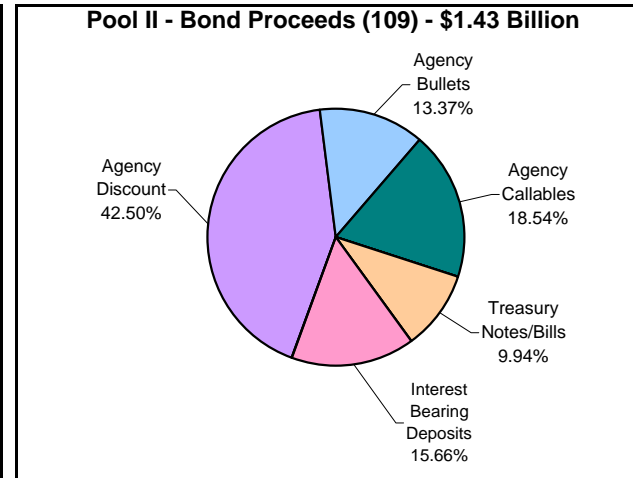
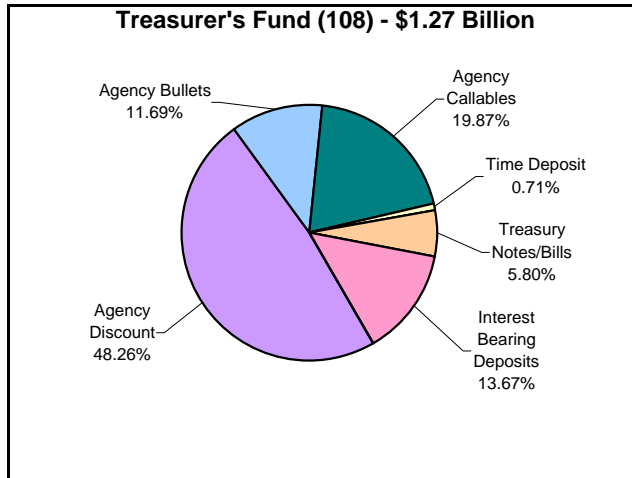
Yield Maturity Breakdown



Policy Compliance

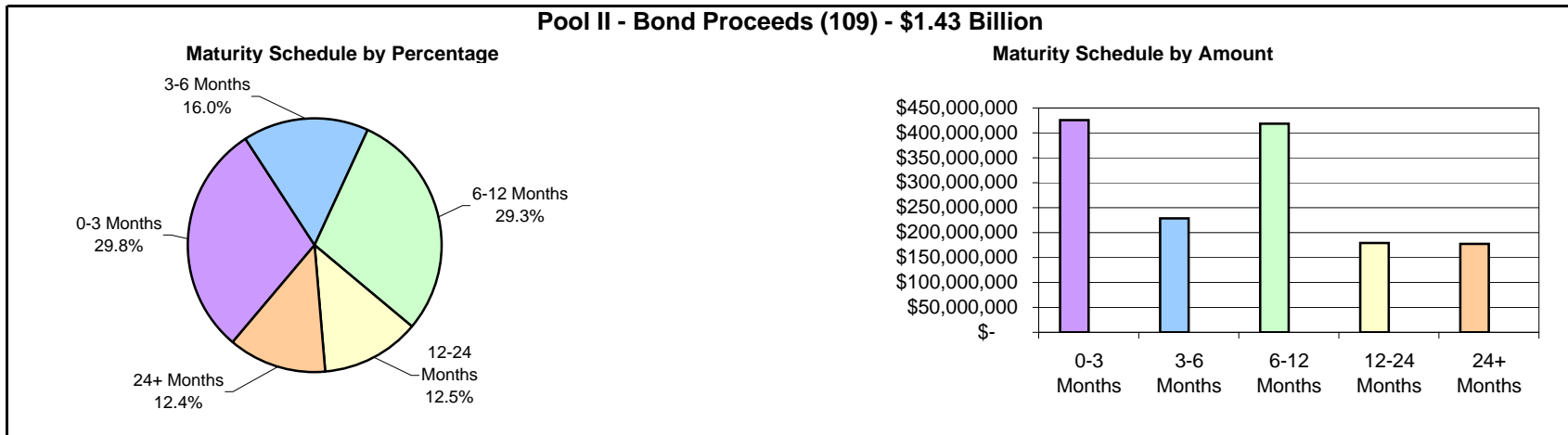
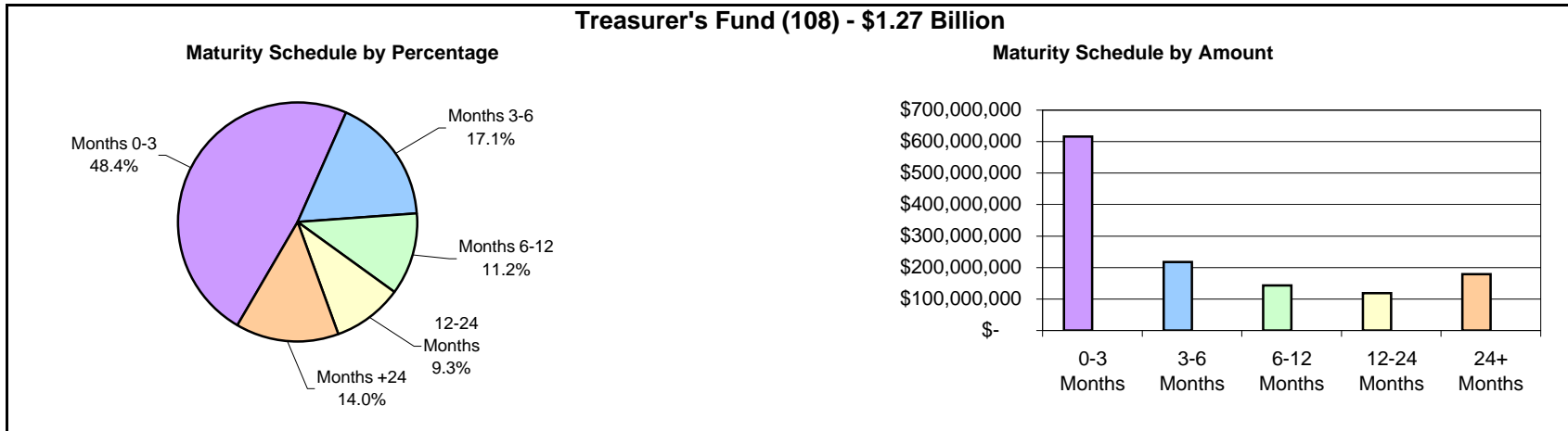
Security Type	% Limit	Current %	Result
Treasuries	100%	7.93%	PASS
Agencies	100%	59.32%	PASS
Agency Callables	25%	17.97%	PASS
Commercial Paper	50%	0.00%	PASS
-CP Single Issuer Max	5%	0.00%	PASS
Banker's Acceptance	25%	0.00%	PASS
Time Deposits	20%	0.23%	PASS
SBA/Investment Pools	50%	0.00%	PASS
Money Market Funds	30%	3.36%	PASS
Interest Bearing Deposit	20%	11.19%	PASS
Open/Closed End Funds	5%	0.00%	PASS

Miami-Dade County Portfolio Composition September 30, 2009

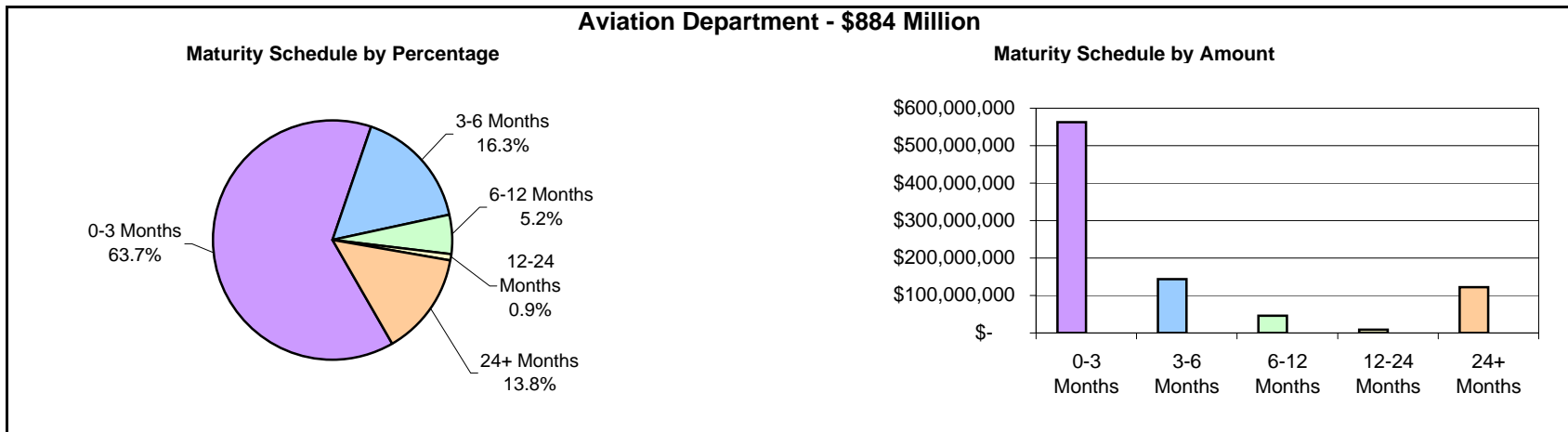
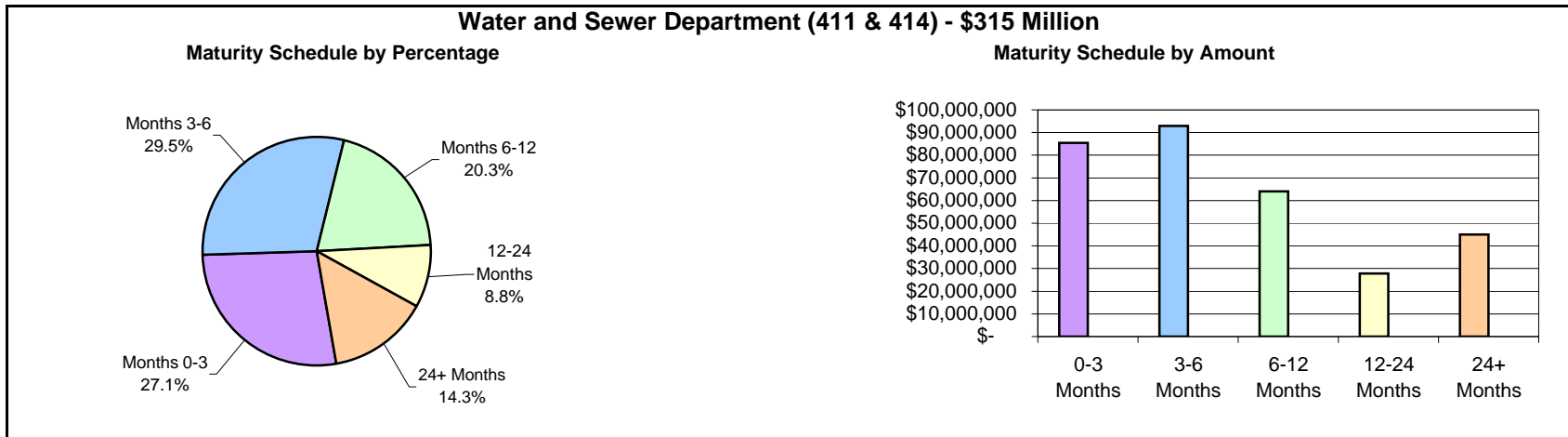


Note: Graphs above do not include miscellaneous funds totaling \$36 million and representing 0.9% of the portfolio.

Miami-Dade County Maturity Breakdown September 30, 2009

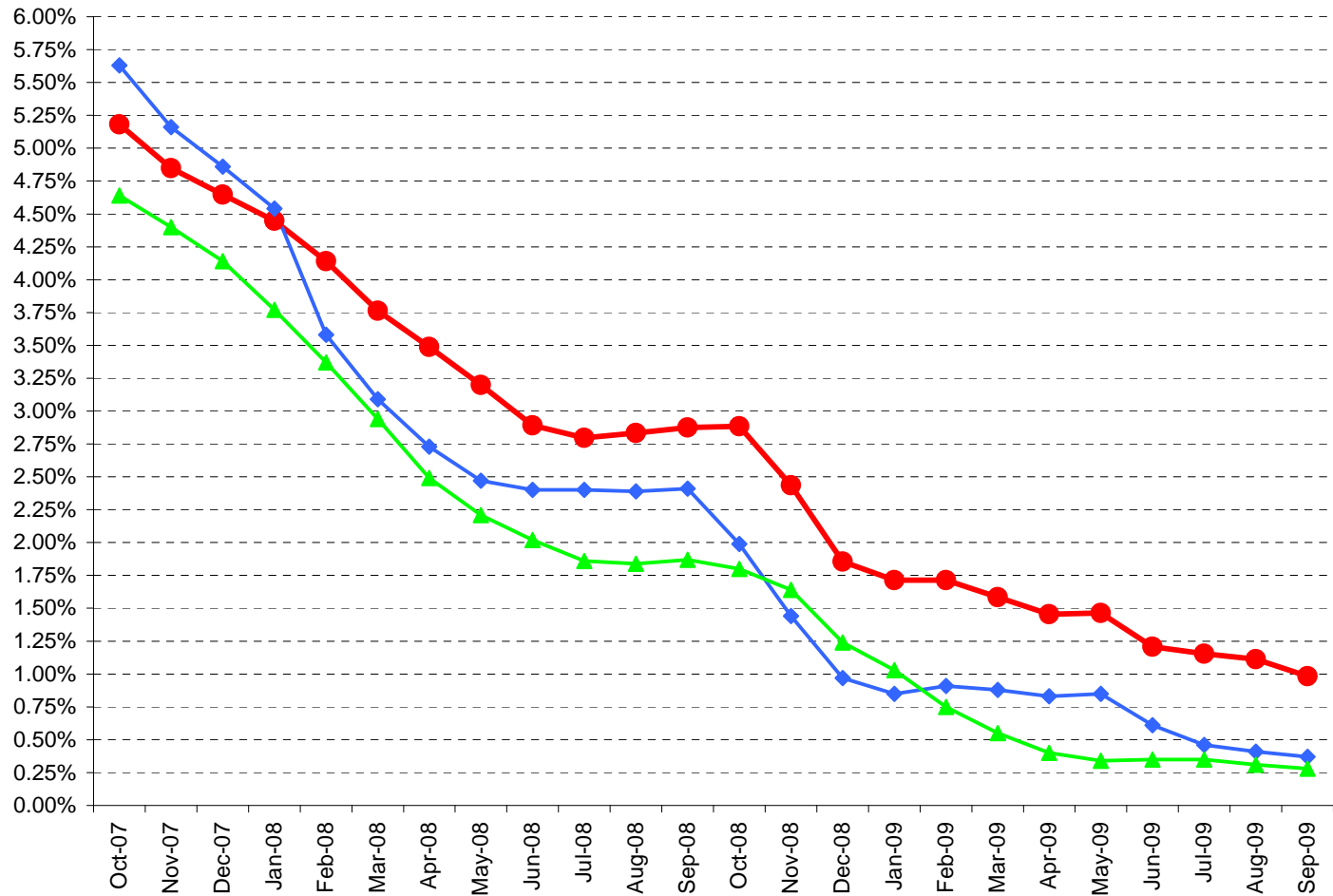


Miami-Dade County Maturity Breakdown September 30, 2009



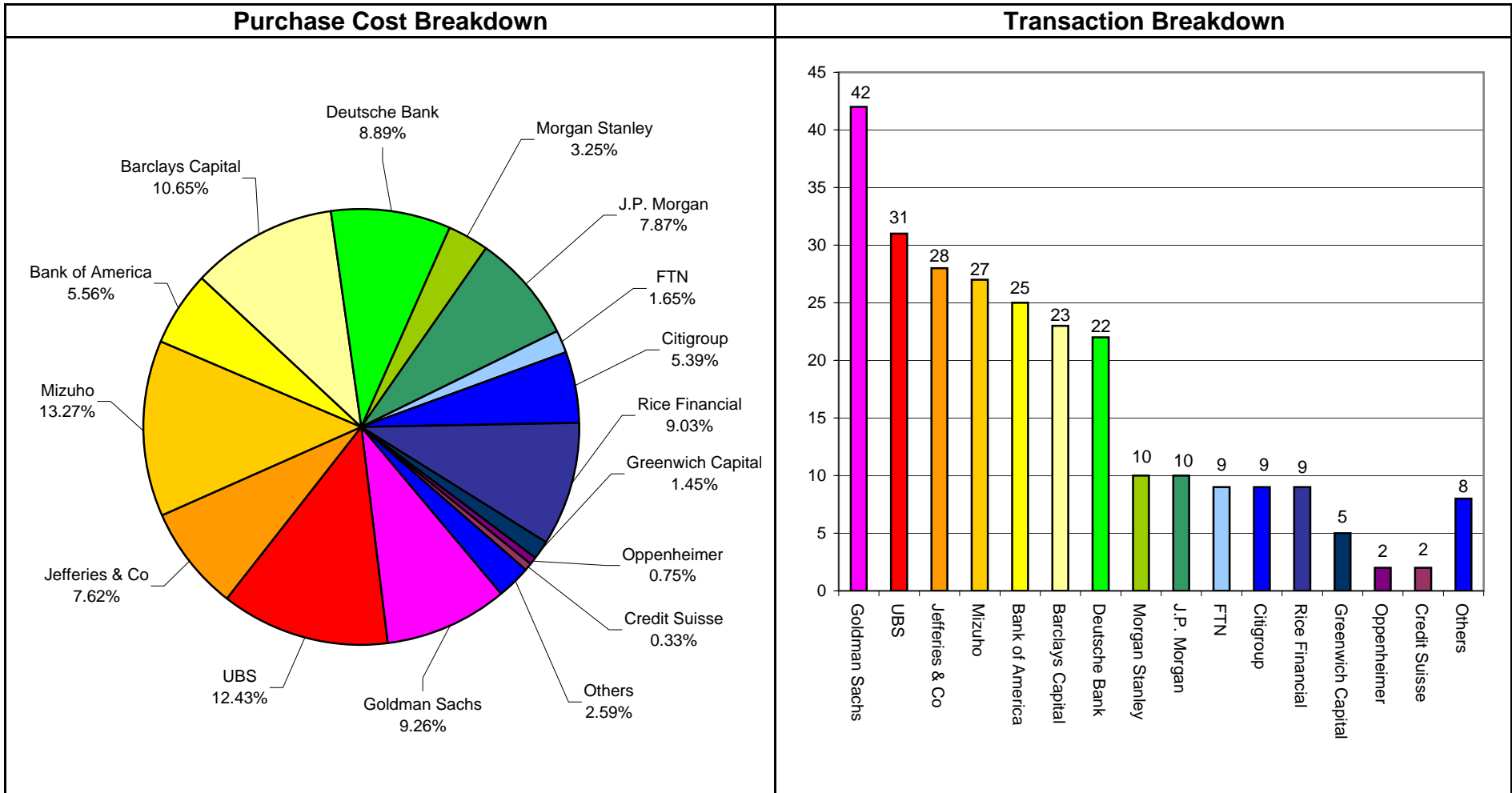
Note: Graphs above do not include miscellaneous funds totaling \$36 million and representing 0.9% of the portfolio.

Miami-Dade County Benchmark Comparisons September 30, 2009



	Oct-07	Nov-07	Dec-07	Jan-08	Feb-08	Mar-08	Apr-08	May-08	Jun-08	Jul-08	Aug-08	Sep-08	Oct-08	Nov-08	Dec-08	Jan-09	Feb-09	Mar-09	Apr-09	May-09	Jun-09	Jul-09	Aug-09	Sep-09
● Miami-Dade - Earned Income Yield	5.18%	4.85%	4.65%	4.45%	4.14%	3.76%	3.49%	3.20%	2.89%	2.80%	2.83%	2.87%	2.89%	2.44%	1.86%	1.72%	1.72%	1.59%	1.46%	1.46%	1.21%	1.15%	1.11%	0.98%
◆ Monthly Avg - Florida SBA Pool	5.63%	5.16%	4.86%	4.54%	3.58%	3.09%	2.73%	2.47%	2.40%	2.40%	2.39%	2.41%	1.99%	1.44%	0.97%	0.85%	0.91%	0.88%	0.83%	0.85%	0.61%	0.46%	0.41%	0.37%
▲ 6-Month Avg of 180-day T-Bill	4.64%	4.40%	4.14%	3.77%	3.37%	2.94%	2.49%	2.21%	2.02%	1.86%	1.84%	1.87%	1.80%	1.64%	1.24%	1.03%	0.75%	0.55%	0.40%	0.34%	0.35%	0.35%	0.31%	0.28%

Miami-Dade County Broker Purchase Distribution September 30, 2009





Detail Security Holdings Report

For the Period Ended

September 30, 2009

MIAMI-DADE COUNTY
REPORT WRITER
AS OF DATE: September 30, 2009
SORTING ORDER: FUND ICC#

INVSMT NUMBER	CUSIP NUMBER	FUND NUMBER	DESCRIPTION	PURCHASE SET DATE	MATURITY DATE	CALL DATE	INTEREST RATE	YTM TRADING	SCHEDULED PAR VALUE	CURRENT BOOK VALUE	PERIOD-END INTEREST ACCRL	MARKET VALUE	UNREALIZED GAIN/LOSS
134696	313385NV4	40	FHLB D N	5/4/2009	11/4/2009		0.340%	0.341%	545,000	544,052.91	772.08	544,984.56	159.57
136244	313385SX5	40	FHLB D N	8/3/2009	2/10/2010		0.350%	0.351%	775,000	773,560.87	444.55	774,715.83	710.41
137277	313385UR5	40	FHLB D N	9/30/2009	3/24/2010		0.210%	0.210%	250,000	249,744.79	1.46	249,855.00	108.75
135785	313397QU8	40	FHLMC D N	7/1/2009	12/21/2009		0.340%	0.341%	500,000	499,183.06	434.44	499,955.00	337.50
136245	313589RK1	40	FNMA D N	8/3/2009	1/5/2010		0.300%	0.300%	275,000	274,644.79	135.21	274,963.33	183.33
137276	313589UR2	40	FNMA D N	9/30/2009	3/24/2010		0.195%	0.195%	100,000	99,905.21	0.54	99,942.00	36.25
		40 Total							2,445,000	2,441,091.63	1,788.28	2,444,415.72	1,535.81
137362	WACHOVIA8	108	WACHOVIA INT BEARIN	9/1/2009	10/1/2009		0.247%	0.247%	25,000,000	25,000,000.00	5,137.17	25,000,000.00	0.00
137363	WACHOVIA8	108	WACHOVIA INT BEARIN	9/4/2009	10/1/2009		0.247%	0.247%	45,000,000	45,000,000.00	8,322.22	45,000,000.00	0.00
137365	WACHOVIA8	108	WACHOVIA INT BEARIN	9/4/2009	10/1/2009		0.247%	0.247%	13,979,991	13,979,991.48	2,585.43	13,979,991.48	0.00
137366	WACHOVIA8	108	WACHOVIA INT BEARIN	9/24/2009	10/1/2009		0.247%	0.247%	24,144,744	24,144,743.52	1,157.67	24,144,743.52	0.00
137367	WACHOVIA8	108	WACHOVIA INT BEARIN	9/24/2009	10/1/2009		0.247%	0.247%	65,933,910	65,933,909.66	3,161.33	65,933,909.66	0.00
134306	912795P54	108	TREASURY BILLS	4/2/2009	10/1/2009		0.410%	0.411%	25,922,000	25,868,268.45	53,731.55	25,922,000.00	0.00
135638	912795S69	108	TREASURY BILLS	6/19/2009	12/17/2009		0.315%	0.315%	619,000	618,019.66	563.29	618,806.57	223.62
137281	912795T50	108	TREASURY BILLS	9/30/2009	3/4/2010		0.155%	0.155%	40,000,000	39,973,305.56	172.22	39,975,001.60	1,523.82
136067	912795UT6	108	TREASURY BILLS	7/14/2009	6/10/2010		0.440%	0.442%	2,391,000	2,381,327.07	2,308.64	2,386,516.78	2,881.07
136234	912828LG3	108	TREASURY NOTES	7/31/2009	7/31/2011		1.000%	1.143%	5,000,000	4,985,937.50	8,423.91	5,014,062.40	28,124.90
137279	3128X9FU9	108	FHLMC C I	9/30/2009	12/30/2011	12/31/2009	1.300%	1.300%	5,000,000	5,000,000.00	180.56	5,004,687.50	4,687.50
132932	3128X8EL2	108	FHLMC C I	1/20/2009	1/20/2012	1/20/2011	2.200%	2.200%	10,000,000	10,000,000.00	43,388.89	10,159,375.00	159,375.00
132933	3128X8EL2	108	FHLMC C I	1/20/2009	1/20/2012	1/20/2011	2.200%	2.200%	5,000,000	5,000,000.00	21,694.44	5,079,687.50	79,687.50
133133	3128X8GP1	108	FHLMC C I	2/2/2009	2/2/2012	2/2/2010	2.250%	2.250%	30,000,000	30,000,000.00	110,625.00	30,159,375.00	159,375.00
134886	3128X8A93	108	FHLMC C I	5/11/2009	5/11/2012	5/11/2010	2.050%	2.076%	5,000,000	4,996,250.00	39,861.11	5,021,875.00	25,625.00
136217	3128X84O2	108	FHLMC C I	7/30/2009	1/30/2013	7/30/2010	2.250%	2.310%	3,000,000	2,994,000.00	11,437.50	3,001,875.00	7,875.00
137248	3128X9GG9	108	FHLMC C I	9/28/2009	3/28/2013	9/28/2010	2.250%	2.250%	15,000,000	15,000,000.00	2,812.50	15,018,750.00	18,750.00
136251	3133XUDY6	108	FHLB C I	8/3/2009	7/29/2011	10/29/2009	1.400%	1.413%	2,000,000	1,999,811.11	4,822.22	2,001,875.00	2,375.00
136520	3133XUCE1	108	FHLB C I	8/12/2009	8/12/2011	2/12/2010	1.500%	1.500%	3,950,000	3,950,000.00	8,064.58	3,962,343.75	12,343.75
135727	3133XTV60	108	FHLB C I	6/29/2009	9/29/2011	3/29/2010	1.350%	1.350%	10,000,000	10,000,000.00	750.00	10,050,000.00	50,000.00
137310	3133XV5L1	108	FHLB C I	9/30/2009	9/30/2011	12/30/2009	1.300%	1.300%	5,000,000	5,000,000.00	180.56	5,014,062.50	14,062.50
132576	3133XSQH4	108	FHLB C I	12/29/2008	12/29/2011	12/29/2009	3.000%	3.000%	5,000,000	5,000,000.00	38,333.33	5,028,125.00	28,125.00
132848	3133XSSM1	108	FHLB C I	1/13/2009	1/13/2014	10/13/2009	3.150%	3.150%	5,000,000	5,000,000.00	34,125.00	5,004,687.50	4,687.50
134147	313313ML9	108	FFCB D N	3/31/2009	10/2/2009		0.400%	0.401%	13,000,000	12,973,277.78	26,577.78	12,999,989.17	133.61
134826	313313NU8	108	FFCB D N	4/3/2009	11/3/2009		0.450%	0.451%	10,000,000	9,973,250.00	22,625.00	9,999,725.00	3,850.00
132661	313313PY8	108	FFCB D N	1/2/2009	12/1/2009		0.650%	0.654%	2,550,000	2,534,668.13	12,523.33	2,549,827.17	2,635.71
134521	313313PY8	108	FFCB D N	4/16/2009	12/1/2009		0.420%	0.421%	1,211,500	1,208,263.28	2,374.54	1,211,417.89	780.07
134295	313313QA9	108	FFCB D N	4/3/2009	12/3/2009		0.500%	0.502%	10,000,000	9,966,111.11	25,138.89	9,999,300.00	8,050.00
134072	313313UR7	108	FFCB D N	3/27/2009	3/24/2010		0.695%	0.700%	5,000,000	4,965,056.94	18,147.22	4,997,100.00	13,895.84
135734	313313UR7	108	FFCB D N	6/29/2009	3/24/2010		0.420%	0.421%	300,000	299,062.00	329.00	299,826.00	435.00
134936	313313UX4	108	FFCB D N	5/12/2009	3/30/2010		0.500%	0.502%	1,267,000	1,261,333.69	2,498.81	1,265,923.05	2,095.55
136026	313313UX4	108	FFCB D N	7/10/2009	3/30/2010		0.370%	0.371%	977,000	974,359.12	833.43	976,169.55	977.00
136034	313313UX4	108	FFCB D N	7/13/2009	3/30/2010		0.370%	0.371%	732,000	730,043.93	601.87	731,377.80	732.00
135814	313313UZ9	108	FFCB D N	7/1/2009	4/1/2010		0.450%	0.452%	2,194,000	2,186,485.55	2,523.10	2,192,114.38	3,105.73
135750	313313VV7	108	FFCB D N	6/30/2009	4/21/2010		0.420%	0.421%	10,000,000	9,965,583.33	10,850.00	9,990,461.11	14,027.78
137258	313313YL6	108	FFCB D N	9/29/2009	6/23/2010		0.260%	0.261%	30,000,000	29,942,150.00	433.33	29,953,625.00	11,041.67
137282	313313YL6	108	FFCB D N	9/30/2009	6/23/2010		0.260%	0.261%	6,000,000	5,988,473.33	43.33	5,990,725.00	2,208.34
133322	3136FHAA3	108	FNMA C I	2/11/2009	2/11/2011	2/11/2010	2.000%	2.000%	15,000,000	15,000,000.00	41,666.67	15,075,000.00	75,000.00
134637	31398AWY4	108	FNMA C I	4/29/2009	4/29/2011	4/29/2010	1.700%	1.700%	5,000,000	5,000,000.00	35,888.89	5,034,375.00	34,375.00
133983	3136FHER2	108	FNMA C I	3/23/2009	9/23/2011	3/23/2010	2.150%	2.150%	5,000,000	5,000,000.00	2,388.89	5,031,250.00	31,250.00
134099	3136FHJ7	108	FNMA C I	3/30/2009	10/1/2012	4/1/2010	2.320%	2.320%	10,000,000	10,000,000.00	116,644.44	10,056,250.00	56,250.00
136210	3136FHX75	108	FNMA C I	7/29/2009	7/29/2014	1/29/2010	3.100%	3.100%	800,000	800,000.00	4,271.11	800,000.00	0.00
132539	313385MK9	108	FHLB D N	12/23/2008	10/1/2009		0.630%	0.633%	440,000	437,828.60	2,171.40	440,000.00	0.00
132925	313385MK9	108	FHLB D N	1/16/2009	10/1/2009		0.570%	0.572%	40,000,000	39,836,600.00	163,400.00	40,000,000.00	0.00
132960	313385MK9	108	FHLB D N	1/21/2009	10/1/2009		0.620%	0.623%	25,000,000	24,891,069.44	108,930.56	25,000,000.00	0.00
136754	313385MS2	108	FHLB D N	9/1/2009	10/8/2009		0.140%	0.140%	3,000,000	2,999,568.33	350.00	2,999,982.50	64.17
132930	313385ND4	108	FHLB D N	1/20/2009	10/19/2009		0.600%	0.603%	2,000,000	1,990,933.33	8,466.67	1,999,970.00	570.00
132928	313385NH5	108	FHLB D N	1/15/2009	10/23/2009		0.600%	0.603%	1,489,000	1,482,026.52	6,427.51	1,488,972.70	518.67
132189	313385NM4	108	FHLB D N	12/3/2008	10/27/2009		1.529%	1.551%	750,000	739,551.83	9,619.96	749,983.75	811.96

MIAMI-DADE COUNTY
REPORT WRITER
AS OF DATE: September 30, 2009
SORTING ORDER: FUND ICC#

INVSMT NUMBER	CUSIP NUMBER	FUND NUMBER	DESCRIPTION	PURCHASE SET DATE	MATURITY DATE	CALL DATE	INTEREST RATE	YTM TRADING	SCHEDULED PAR VALUE	CURRENT BOOK VALUE	PERIOD-END INTEREST ACCRL	MARKET VALUE	UNREALIZED GAIN/LOSS
134560	313385NQ5	108	FHLB D N	4/21/2009	10/30/2009		0.380%	0.381%	969,000	967,036.16	1,667.22	968,976.58	273.20
132008	313385NT9	108	FHLB D N	11/25/2008	11/2/2009		1.640%	1.666%	38,000,000	37,407,960.00	536,644.44	37,998,986.67	54,382.23
131975	313385PH3	108	FHLB D N	11/21/2008	11/16/2009		1.650%	1.678%	9,798,000	9,636,333.00	141,009.55	9,797,624.41	20,281.86
132117	313385PM2	108	FHLB D N	11/28/2008	11/20/2009		1.670%	1.698%	5,000,000	4,917,195.83	71,206.95	4,999,791.67	11,388.89
132007	313385PS9	108	FHLB D N	11/25/2008	11/25/2009		1.700%	1.730%	1,350,000	1,326,731.25	19,762.50	1,349,938.13	3,444.38
133987	313385PS9	108	FHLB D N	3/23/2009	11/25/2009		0.600%	0.602%	600,000	597,530.00	1,920.00	599,972.50	522.50
135239	313385PS9	108	FHLB D N	5/29/2009	11/25/2009		0.300%	0.300%	753,000	751,870.50	784.38	752,965.49	310.61
133221	313385PY6	108	FHLB D N	2/4/2009	12/1/2009		0.840%	0.846%	1,500,000	1,489,500.00	8,365.00	1,499,898.33	2,033.33
133651	313385PY6	108	FHLB D N	3/3/2009	12/1/2009		0.800%	0.805%	3,950,000	3,926,036.67	18,608.89	3,949,732.28	5,086.72
135113	313385PY6	108	FHLB D N	5/22/2009	12/1/2009		0.350%	0.351%	200,000	199,624.72	256.67	199,986.44	105.05
132599	313385QF6	108	FHLB D N	12/29/2008	12/8/2009		0.800%	0.806%	1,386,000	1,375,404.80	8,500.80	1,385,895.28	1,989.68
133603	313385QH2	108	FHLB D N	3/2/2009	12/10/2009		0.830%	0.835%	1,000,000	993,475.28	4,910.83	999,922.22	1,536.11
134157	313385QP4	108	FHLB D N	3/31/2009	12/16/2009		0.555%	0.557%	2,500,000	2,489,979.17	7,091.66	2,499,788.89	2,718.06
132961	313385QR0	108	FHLB D N	1/21/2009	12/18/2009		0.600%	0.603%	502,000	499,230.63	2,116.77	501,956.49	609.09
132625	313385QU3	108	FHLB D N	12/30/2008	12/21/2009		0.770%	0.776%	7,150,900	7,096,449.87	42,061.20	7,150,256.42	11,745.33
135690	313385RB4	108	FHLB D N	6/23/2009	12/28/2009		0.350%	0.351%	1,152,000	1,149,894.40	1,120.00	1,151,887.36	872.96
137286	313385RD0	108	FHLB D N	9/30/2009	12/30/2009		0.130%	0.130%	14,900,000	14,895,103.69	53.81	14,898,137.50	2,980.00
132657	313385RE8	108	FHLB D N	1/2/2009	12/31/2009		0.770%	0.776%	10,000,000	9,922,358.33	58,177.78	9,998,736.11	18,200.00
132924	313385RR9	108	FHLB D N	1/16/2009	1/11/2010		0.750%	0.756%	10,000,000	9,925,000.00	53,750.00	9,998,583.33	19,833.33
133928	313385RU2	108	FHLB D N	3/19/2009	1/14/2010		0.800%	0.805%	300,000	297,993.33	1,306.67	299,956.25	656.25
135652	313385RV0	108	FHLB D N	6/23/2009	1/15/2010		0.370%	0.371%	500,000	498,941.39	513.89	499,926.39	471.11
133929	313385SB3	108	FHLB D N	3/19/2009	1/21/2010		0.850%	0.856%	150,000	148,909.17	694.16	149,976.67	373.34
134144	313385SN7	108	FHLB D N	3/30/2009	2/1/2010		0.700%	0.704%	2,442,000	2,427,375.13	8,784.42	2,441,165.65	5,006.10
134692	313385SN7	108	FHLB D N	4/30/2009	2/1/2010		0.500%	0.502%	2,580,000	2,570,074.17	5,518.33	2,579,118.50	3,526.00
135509	313385SN7	108	FHLB D N	6/9/2009	2/1/2010		0.400%	0.401%	1,563,000	1,558,884.10	1,979.80	1,562,465.98	1,602.08
135589	313385SX5	108	FHLB D N	6/15/2009	2/10/2010		0.400%	0.401%	500,000	498,666.67	600.00	499,816.67	550.00
134137	313385TL0	108	FHLB D N	3/27/2009	2/23/2010		0.750%	0.755%	1,168,000	1,159,897.00	4,574.67	1,167,529.56	3,057.89
135590	313385UC8	108	FHLB D N	6/15/2009	3/11/2010		0.410%	0.411%	736,000	733,745.18	905.28	735,605.01	954.55
134039	313385UR5	108	FHLB D N	3/26/2009	3/24/2010		0.850%	0.857%	20,000,000	19,828,583.33	89,250.00	19,988,400.00	70,566.67
135568	313385XP6	108	FHLB D N	6/12/2009	6/2/2010		0.560%	0.563%	893,000	888,068.65	1,541.92	891,728.96	2,118.39
134156	313397NH0	108	FHLMC D N	3/31/2009	10/23/2009		0.480%	0.481%	770,000	767,885.07	1,889.06	769,985.88	211.75
134149	313397PA3	108	FHLMC D N	3/31/2009	11/9/2009		0.440%	0.441%	8,000,000	7,978,195.56	17,991.11	7,999,740.00	3,553.33
134150	313397PA3	108	FHLMC D N	3/31/2009	11/9/2009		0.440%	0.441%	8,000,000	7,978,195.56	17,991.11	7,999,740.00	3,553.33
133602	313397PM7	108	FHLMC D N	3/2/2009	11/20/2009		0.720%	0.724%	6,000,000	5,968,440.00	25,560.00	5,999,750.00	5,750.00
133717	313397QE4	108	FHLMC D N	3/5/2009	12/7/2009		0.880%	0.886%	227,000	225,462.96	1,165.26	226,983.10	354.88
134009	313397QE4	108	FHLMC D N	3/24/2009	12/7/2009		0.650%	0.653%	590,000	587,251.58	2,034.68	589,956.08	669.82
133716	313397QX2	108	FHLMC D N	3/5/2009	12/24/2009		0.780%	0.785%	6,450,000	6,408,913.50	29,347.50	6,449,398.00	11,137.00
134038	313397QX2	108	FHLMC D N	3/26/2009	12/24/2009		0.620%	0.623%	9,000,000	8,957,685.00	29,295.00	8,999,160.00	12,180.00
134193	313397QX2	108	FHLMC D N	3/31/2009	12/24/2009		0.630%	0.633%	1,627,000	1,619,369.37	5,238.94	1,626,848.15	2,239.84
135774	313397RB9	108	FHLMC D N	6/30/2009	12/28/2009		0.340%	0.341%	717,000	715,774.33	629.76	716,929.89	525.80
133601	313397RC7	108	FHLMC D N	3/2/2009	12/29/2009		0.860%	0.866%	2,000,000	1,985,571.11	10,176.67	1,999,802.22	4,054.44
134042	313397RD5	108	FHLMC D N	3/26/2009	12/30/2009		0.620%	0.623%	6,000,000	5,971,170.00	19,530.00	5,999,250.00	8,550.00
133988	313397RJ2	108	FHLMC D N	3/23/2009	1/4/2010		0.620%	0.623%	20,000,000	19,901,144.44	66,133.34	19,997,361.11	30,083.33
134008	313397RJ2	108	FHLMC D N	3/24/2009	1/4/2010		0.620%	0.623%	8,000,000	7,960,595.56	26,315.55	7,998,944.44	12,033.33
134070	313397RJ2	108	FHLMC D N	3/27/2009	1/4/2010		0.630%	0.633%	2,000,000	1,990,095.00	6,580.00	1,999,736.11	3,061.11
134027	313397RL7	108	FHLMC D N	3/25/2009	1/6/2010		0.630%	0.633%	4,583,000	4,559,981.88	15,238.48	4,582,382.57	7,162.21
134028	313397SG7	108	FHLMC D N	3/25/2009	1/26/2010		0.700%	0.704%	5,000,000	4,970,152.78	18,472.22	4,999,187.50	10,562.50
134101	313397SG7	108	FHLMC D N	3/30/2009	1/26/2010		0.660%	0.664%	700,000	696,124.33	2,374.17	699,886.25	1,387.75
134148	313397SG7	108	FHLMC D N	3/31/2009	1/26/2010		0.670%	0.674%	9,000,000	8,949,582.50	30,820.00	8,998,537.50	18,135.00
134151	313397SG7	108	FHLMC D N	3/31/2009	1/26/2010		0.670%	0.674%	7,000,000	6,960,786.39	23,971.11	6,998,862.50	14,105.00
134040	313397SK8	108	FHLMC D N	3/26/2009	1/29/2010		0.660%	0.664%	4,000,000	3,977,340.00	13,860.00	3,998,666.67	7,466.67
135747	313397SQ5	108	FHLMC D N	6/29/2009	2/3/2010		0.420%	0.421%	1,993,000	1,987,907.89	2,185.65	1,992,307.99	2,214.45
136701	313397TD3	108	FHLMC D N	8/28/2009	2/16/2010		0.260%	0.260%	1,250,000	1,248,447.22	306.94	1,249,520.83	766.67
135030	313397TK7	108	FHLMC D N	5/18/2009	2/22/2010		0.440%	0.442%	1,419,000	1,414,143.87	2,358.69	1,414,432.40	1,929.84
136661	313397UJ8	108	FHLMC D N	8/24/2009	3/17/2010		0.320%	0.321%	2,131,000	2,127,116.85	719.80	2,129,813.74	1,977.09
136674	313397UY5	108	FHLMC D N	8/25/2009	3/31/2010		0.270%	0.270%	642,000	640,950.33	178.16	641,515.83	387.34

MIAMI-DADE COUNTY
REPORT WRITER
AS OF DATE: September 30, 2009
SORTING ORDER: FUND ICC#

INVSMT NUMBER	CUSIP NUMBER	FUND NUMBER	DESCRIPTION	PURCHASE SET DATE	MATURITY DATE	CALL DATE	INTEREST RATE	YTM TRADING	SCHEDULED PAR VALUE	CURRENT BOOK VALUE	PERIOD-END INTEREST ACCRL	MARKET VALUE	UNREALIZED GAIN/LOSS
135647	313397VQ1	108	FHLMC D N	6/22/2009	4/16/2010		0.460%	0.462%	2,200,000	2,191,622.89	2,839.22	2,198,194.17	3,732.06
135705	313397WK3	108	FHLMC D N	6/24/2009	5/5/2010		0.510%	0.512%	712,000	708,822.70	998.58	711,359.20	1,537.92
135542	313397XN6	108	FHLMC D N	6/10/2009	6/1/2010		0.550%	0.553%	930,000	924,941.83	1,605.54	928,681.73	2,134.36
136216	31331GZV4	108	FFCB C I	7/30/2009	7/7/2011	10/13/2009	1.450%	1.466%	5,000,000	5,003,069.44	16,916.66	5,001,562.50	3,125.00
137259	31331GSS9	108	FFCB C I	9/29/2009	9/23/2011	12/23/2009	1.200%	1.277%	10,000,000	9,987,000.00	2,666.67	9,956,250.00	(28,750.00)
137250	31331GUZ3	108	FFCB C I	9/28/2009	9/28/2011	9/28/2010	1.240%	1.265%	4,060,000	4,057,970.00	419.53	4,051,118.75	(6,851.25)
132367	31331GGQ6	108	FFCB C I	12/15/2008	12/15/2011	12/15/2009	3.000%	3.000%	15,000,000	15,000,000.00	132,500.00	15,060,937.50	60,937.50
134502	31331GTK5	108	FFCB C I	4/20/2009	4/20/2012	4/20/2010	2.020%	2.020%	10,000,000	10,000,000.00	90,338.89	10,062,500.00	62,500.00
133534	31331GNG0	108	FFCB C I	2/25/2009	2/25/2013	2/25/2010	3.000%	3.000%	10,000,000	10,000,000.00	30,000.00	10,075,000.00	75,000.00
137148	31331GS26	108	FFCB C I	9/23/2009	9/23/2013	9/23/2010	2.350%	2.350%	6,650,000	6,650,000.00	3,472.78	6,627,140.63	(22,859.38)
137249	31331GT74	108	FFCB C I	9/28/2009	9/24/2013	12/24/2009	2.800%	2.816%	9,147,000	9,144,357.53	4,980.03	9,169,867.50	28,355.70
132780	313589MK6	108	FNMA D N	1/8/2009	10/1/2009		0.550%	0.552%	30,000,000	29,878,083.33	121,916.67	30,000,000.00	0.00
133316	313589MK6	108	FNMA D N	2/10/2009	10/1/2009		0.600%	0.602%	1,236,000	1,231,200.20	4,799.80	1,236,000.00	0.00
133647	313589MK6	108	FNMA D N	3/3/2009	10/1/2009		0.590%	0.592%	10,000,000	9,965,255.56	34,744.44	10,000,000.00	0.00
133649	313589MK6	108	FNMA D N	3/3/2009	10/1/2009		0.650%	0.652%	750,000	747,129.17	2,870.83	750,000.00	0.00
133098	313589ML4	108	FNMA D N	1/29/2009	10/2/2009		0.602%	0.604%	1,000,000	995,886.33	4,096.95	999,999.17	15.89
132828	313589MX8	108	FNMA D N	1/12/2009	10/13/2009		0.480%	0.482%	2,500,000	2,490,866.67	8,733.33	2,499,975.00	375.00
135005	313589NA7	108	FNMA D N	5/15/2009	10/16/2009		0.280%	0.280%	1,194,000	1,192,569.85	1,290.85	1,193,985.08	124.38
133260	313589PY3	108	FNMA D N	2/6/2009	12/1/2009		0.808%	0.813%	2,750,000	2,731,606.78	14,628.16	2,749,813.61	3,578.67
133757	313589QE6	108	FNMA D N	3/5/2009	12/7/2009		0.745%	0.749%	4,682,000	4,655,161.08	20,347.20	4,681,651.45	6,143.17
133650	313589QM8	108	FNMA D N	3/3/2009	12/14/2009		0.750%	0.754%	1,000,000	994,041.67	4,416.66	999,917.78	1,459.45
134160	313589QM8	108	FNMA D N	3/31/2009	12/14/2009		0.590%	0.593%	9,000,000	8,961,945.00	27,140.00	8,999,260.00	10,175.00
137284	313589QO9	108	FNMA D N	9/30/2009	12/17/2009		0.100%	0.100%	7,200,000	7,198,440.00	20.00	7,199,384.00	924.00
133097	313589QU0	108	FNMA D N	1/29/2009	12/21/2009		0.779%	0.785%	2,900,000	2,879,542.59	15,374.43	2,899,739.00	4,821.98
133648	313589RB1	108	FNMA D N	3/3/2009	12/28/2009		0.830%	0.836%	750,000	744,812.50	3,665.83	749,926.67	1,448.34
133990	313589RB1	108	FNMA D N	3/23/2009	12/28/2009		0.580%	0.583%	30,000,000	29,864,666.67	92,800.00	29,997,066.67	39,600.00
134196	313589RB1	108	FNMA D N	4/1/2009	12/28/2009		0.620%	0.623%	10,000,000	9,953,327.78	31,516.67	9,999,022.22	14,177.77
137278	313589RB1	108	FNMA D N	9/30/2009	12/28/2009		0.130%	0.130%	10,000,000	9,996,786.11	36.11	9,999,022.22	2,200.00
134043	313589RC9	108	FNMA D N	3/26/2009	12/29/2009		0.620%	0.623%	5,000,000	4,976,061.11	16,275.00	4,999,505.56	7,169.45
134069	313589RD7	108	FNMA D N	3/25/2009	12/30/2009		0.600%	0.603%	1,877,000	1,868,240.66	5,943.84	1,876,765.38	2,580.88
134351	313589RD7	108	FNMA D N	4/8/2009	12/30/2009		0.600%	0.603%	1,550,000	1,543,128.33	4,546.67	1,549,806.25	2,131.25
137280	313589RD7	108	FNMA D N	9/30/2009	12/30/2009		0.130%	0.130%	15,000,000	14,995,070.83	54.17	14,998,125.00	3,000.00
134158	313589RE5	108	FNMA D N	3/31/2009	12/31/2009		0.600%	0.603%	10,000,000	9,954,166.67	30,666.66	9,998,736.11	13,902.78
133884	313589RJ4	108	FNMA D N	3/13/2009	1/4/2010		0.830%	0.836%	4,522,250	4,491,283.90	21,061.12	4,521,653.31	9,308.29
134635	313589RJ4	108	FNMA D N	4/28/2009	1/4/2010		0.430%	0.431%	2,515,000	2,507,459.89	4,686.28	2,514,668.16	2,521.99
137285	313589RJ4	108	FNMA D N	9/30/2009	1/4/2010		0.130%	0.130%	7,700,000	7,697,330.67	27.81	7,698,984.03	1,625.55
137407	313589RN5	108	FNMA D N	9/30/2009	1/8/2010		0.120%	0.120%	5,000,000	4,998,333.33	16.67	4,999,312.50	962.50
134041	313589SN4	108	FNMA D N	3/26/2009	2/1/2010		0.790%	0.795%	3,550,000	3,525,694.33	14,723.63	3,548,787.08	8,369.12
134319	313589SV6	108	FNMA D N	4/6/2009	2/8/2010		0.645%	0.649%	5,600,000	5,569,097.33	17,859.34	5,597,977.78	11,021.11
136684	313589TE3	108	FNMA D N	8/26/2009	2/17/2010		0.270%	0.270%	1,248,000	1,246,362.00	336.96	1,247,518.13	819.17
137283	313589TU7	108	FNMA D N	9/30/2009	3/3/2010		0.180%	0.180%	800,000	799,384.00	4.00	799,592.00	204.00
130256	31331Y6H8	108	FFCB - BULLET	8/18/2008	2/18/2010		3.150%	3.150%	10,000,000	10,000,000.00	37,625.00	10,109,375.00	109,375.00
132318	31331GGS2	108	FFCB - BULLET	12/11/2008	6/11/2010		2.000%	2.000%	30,000,000	30,000,000.00	183,333.33	30,309,375.00	309,375.00
132319	31331GGS2	108	FFCB - BULLET	12/11/2008	6/11/2010		2.000%	2.000%	20,000,000	20,000,000.00	122,222.22	20,206,250.00	206,250.00
129495	31331Y2P4	108	FFCB - BULLET	7/7/2008	7/7/2010		3.300%	3.300%	6,310,000	6,310,000.00	48,587.00	6,448,031.25	138,031.25
134814	31331GVL0	108	FFCB - BULLET	5/7/2009	5/7/2012		1.875%	1.875%	5,000,000	5,000,000.00	37,500.00	5,035,937.50	35,937.50
134036	31331GRG6	108	FFCB - BULLET	3/26/2009	3/26/2013		2.500%	2.511%	15,000,000	14,994,759.75	5,208.33	15,201,562.50	206,802.75
136250	3133XUHG1	108	FHLB - BULLET	8/3/2009	2/3/2011		0.950%	0.963%	5,000,000	4,999,000.00	7,652.78	5,017,187.50	18,187.50
134603	3133XTLJ3	108	FHLB - BULLET	4/28/2009	4/28/2011		1.375%	1.375%	3,500,000	3,500,000.00	20,453.13	3,532,812.50	32,812.50
133010	3133XSWM6	108	FHLB - BULLET	1/23/2009	1/23/2012		2.100%	2.100%	4,000,000	4,000,000.00	15,866.67	4,080,000.00	80,000.00
134096	3137EABZ1	108	FHLMC - BULLET	3/27/2009	4/26/2010		1.625%	1.648%	20,000,000	19,990,600.00	166,111.11	20,250,000.00	259,400.00
134139	3136FHHV0	108	FNMA - BULLET	3/30/2009	9/30/2010		1.200%	1.200%	10,000,000	10,000,000.00	333.33	10,062,500.00	62,500.00
134098	3136FHHW8	108	FNMA - BULLET	3/30/2009	3/30/2011		1.600%	1.600%	20,000,000	20,000,000.00	888.89	20,262,500.00	262,500.00
133369	3136FHAQ8	108	FNMA STEP UP	2/17/2009	2/17/2009	2/17/2010	2.000%	2.000%	3,000,000	3,000,000.00	7,333.33	3,015,000.00	15,000.00
134596	3136FHLV9	108	FNMA STEP UP	4/27/2009	4/27/2010	4/27/2010	1.250%	1.250%	5,000,000	5,000,000.00	26,736.11	5,021,875.00	21,875.00
136686	3136FJAP6	108	FNMA STEP UP	8/27/2009	8/27/2010		1.000%	1.050%	6,455,000	6,451,772.50	6,096.39	6,465,085.94	13,313.44

MIAMI-DADE COUNTY
REPORT WRITER
AS OF DATE: September 30, 2009
SORTING ORDER: FUND ICC#

INVSMT NUMBER	CUSIP NUMBER	FUND NUMBER	DESCRIPTION	PURCHASE SET DATE	MATURITY DATE	CALL DATE	INTEREST RATE	YTM TRADING	SCHEDULED PAR VALUE	CURRENT BOOK VALUE	PERIOD-END INTEREST ACCRL	MARKET VALUE	UNREALIZED GAIN/LOSS
134327	3136FHJG1	108	FNMA STEP UP	4/7/2009	10/7/2011	4/7/2010	1.375%	1.375%	10,000,000	10,000,000.00	66,458.33	10,046,875.00	46,875.00
136113	3133XU4F7	108	FHLB STEP UP	7/20/2009	1/20/2010		0.750%	0.750%	5,000,000	5,000,000.00	7,395.83	5,001,562.50	1,562.50
136193	3133XU5F6	108	FHLB STEP UP	7/28/2009	1/27/2010		0.500%	0.500%	2,000,000	2,000,027.78	1,777.78	2,001,875.00	1,875.00
135751	3133XTVT0	108	FHLB STEP UP	6/30/2009	6/30/2010	6/30/2010	1.000%	1.000%	10,000,000	10,000,000.00	25,277.78	10,050,000.00	50,000.00
136687	3133XUJ95	108	FHLB STEP UP	8/27/2009	8/27/2010		1.500%	1.551%	2,000,000	1,999,000.00	2,833.33	2,002,500.00	3,500.00
133394	TD0001	108	TIME DEPOSIT MDTA LO	2/14/2009	1/8/2010		0.600%	0.600%	25,000	25,000.00	19.73	25,000.00	0.00
133393	TD0001	108	TIME DEPOSIT SMALL B	2/15/2009	2/16/2010		1.020%	1.020%	4,000,000	4,000,000.00	5,253.70	4,000,000.00	0.00
133882	TD0135	108	TIME DEPOSIT - TD BA	3/13/2009	3/15/2010		2.000%	2.000%	5,000,000	5,000,000.00	5,479.45	5,000,000.00	0.00
136209	TD0001	108	TIME DEPOSIT - MDTA	7/24/2009	7/24/2010		0.850%	0.850%	25,000	25,000.00	40.17	25,000.00	0.00
		108 Total							1,276,631,295	1,273,313,274.51	4,083,427.34	1,279,235,651.16	3,476,467.56
137375	WACHOVIA8	109	WACHOVIA INT BEARIN	9/4/2009	10/1/2009		0.247%	0.247%	69,516,259	69,516,258.52	12,856.21	69,516,258.52	0.00
137377	WACHOVIA8	109	WACHOVIA INT BEARIN	9/24/2009	10/1/2009		0.247%	0.247%	89,545,523	89,545,522.70	4,293.43	89,545,522.70	0.00
137381	WACHOVIA8	109	WACHOVIA INT BEARIN	9/1/2009	10/1/2009		0.247%	0.247%	64,858,511	64,858,510.55	13,327.57	64,858,510.55	0.00
134303	912795P54	109	TREASURY BILLS	4/2/2009	10/1/2009		0.410%	0.411%	3,450,000	3,442,848.92	7,151.08	3,450,000.00	0.00
135639	912795S69	109	TREASURY BILLS	6/19/2009	12/17/2009		0.315%	0.315%	2,381,000	2,377,229.09	2,166.71	2,380,255.99	860.19
135649	912795S69	109	TREASURY BILLS	6/22/2009	12/17/2009		0.320%	0.321%	4,000,000	3,993,671.11	3,591.11	3,998,750.08	1,487.86
137287	912795T43	109	TREASURY BILLS	9/30/2009	2/25/2010		0.135%	0.135%	15,000,000	14,991,675.00	56.25	14,990,625.60	(1,105.65)
136066	912795UT6	109	TREASURY BILLS	7/14/2009	6/10/2010		0.440%	0.442%	609,000	606,536.26	588.02	607,858.10	733.82
137011	912795UT6	109	TREASURY BILLS	9/14/2009	6/10/2010		0.300%	0.301%	4,000,000	3,991,033.33	566.67	3,992,499.84	899.84
136615	912795UU3	109	TREASURY BILLS	8/19/2009	6/17/2010		0.410%	0.411%	15,000,000	14,948,408.33	7,345.83	14,971,874.40	16,120.24
137012	912795UU3	109	TREASURY BILLS	9/14/2009	6/17/2010		0.310%	0.311%	8,000,000	7,980,986.67	1,171.11	7,984,999.68	2,841.90
137031	912795UU3	109	TREASURY BILLS	9/16/2009	6/17/2010		0.300%	0.301%	10,000,000	9,977,166.67	1,250.00	9,981,249.60	2,832.93
137032	912795UY5	109	TREASURY BILLS	9/16/2009	7/15/2010		0.343%	0.343%	15,000,000	14,956,902.08	2,140.63	14,962,500.00	3,457.29
137098	912795UY5	109	TREASURY BILLS	9/18/2009	7/15/2010		0.345%	0.346%	30,000,000	29,913,750.00	3,737.50	29,925,000.00	7,512.50
137099	912795UY5	109	TREASURY BILLS	9/18/2009	7/15/2010		0.345%	0.346%	10,000,000	9,971,250.00	1,245.83	9,975,000.00	2,504.17
137162	912795U90	109	TREASURY BILLS	9/24/2009	9/23/2010		0.402%	0.404%	20,000,000	19,918,706.60	1,563.33	19,925,000.00	4,730.07
135466	912828KU3	109	TREASURY NOTES	6/8/2009	5/31/2011		0.875%	1.244%	5,000,000	4,965,018.78	14,702.86	5,012,500.00	48,437.50
133535	3128X8LN0	109	FHLMC C I	2/25/2009	2/25/2011	2/25/2010	2.000%	2.000%	3,000,000	3,000,000.00	6,000.00	3,016,875.00	16,875.00
136163	3128X83S9	109	FHLMC C I	7/22/2009	7/22/2011	10/22/2009	1.625%	1.625%	15,000,000	15,000,000.00	46,718.75	15,009,375.00	9,375.00
134107	3128X8TB8	109	FHLMC C I	3/30/2009	3/30/2012	3/30/2010	2.125%	2.125%	20,000,000	20,000,000.00	1,180.56	20,162,500.00	162,500.00
134693	3128X8A28	109	FHLMC C I	5/4/2009	5/4/2012	11/4/2009	2.125%	2.125%	6,000,000	6,000,000.00	52,062.50	6,007,500.00	7,500.00
137194	3128X9EW6	109	FHLMC C I	9/25/2009	9/24/2014	12/24/2009	3.250%	3.279%	9,130,000	9,118,498.74	5,769.66	9,130,000.00	12,325.50
136194	3133XUCG6	109	FHLB C I	7/28/2009	1/28/2011	10/28/2009	1.000%	1.000%	10,000,000	10,000,000.00	17,500.00	10,006,250.00	6,250.00
136490	3133XUGP2	109	FHLB C I	8/11/2009	2/4/2011	11/4/2009	1.000%	1.137%	15,000,000	14,972,916.67	23,750.00	15,009,375.00	39,375.00
137290	3133XV5L1	109	FHLB C I	9/30/2009	9/30/2011	12/30/2009	1.300%	1.318%	5,000,000	4,998,250.00	180.56	5,014,062.50	15,812.50
136074	3133XU3V3	109	FHLB C I	7/16/2009	7/16/2012	10/16/2009	2.200%	2.200%	5,000,000	5,000,000.00	22,916.67	5,003,125.00	3,125.00
136122	3133XU3U5	109	FHLB C I	7/20/2009	7/15/2013	10/15/2009	2.750%	2.785%	19,580,000	19,562,024.47	113,672.78	19,598,356.25	43,810.25
136041	3133XSRU4	109	FHLB C I	7/14/2009	1/7/2014	1/7/2014	3.000%	3.015%	1,000,000	999,958.33	7,000.00	995,625.00	(3,750.00)
135694	313313NM6	109	FFCB D N	6/25/2009	10/27/2009		0.280%	0.280%	692,000	691,332.60	527.46	691,985.01	124.95
134359	313313PA0	109	FFCB D N	4/9/2009	11/9/2009		0.500%	0.501%	1,300,000	1,296,136.11	3,159.72	1,299,957.75	661.92
136597	313313PE2	109	FFCB D N	8/18/2009	11/13/2009		0.300%	0.300%	225,000	224,836.88	82.50	224,991.94	72.56
134522	313313PY8	109	FFCB D N	4/16/2009	12/1/2009		0.420%	0.421%	2,288,500	2,282,385.89	4,485.46	2,288,344.89	1,473.54
136959	313313SW9	109	FFCB D N	9/9/2009	2/9/2010		0.210%	0.210%	1,500,000	1,498,661.25	192.50	1,499,454.17	600.42
135696	313313TM0	109	FFCB D N	6/25/2009	2/24/2010		0.380%	0.381%	2,000,000	1,994,848.89	2,068.89	1,999,188.89	2,271.11
134937	313313UX4	109	FFCB D N	5/12/2009	3/30/2010		0.500%	0.502%	2,733,000	2,720,777.42	5,390.08	2,730,676.95	4,509.45
135011	313313UX4	109	FFCB D N	5/18/2009	3/30/2010		0.500%	0.502%	100,000	99,561.11	188.89	99,915.00	165.00
136025	313313UX4	109	FFCB D N	7/10/2009	3/30/2010		0.370%	0.371%	1,023,000	1,020,234.77	872.68	1,022,130.45	1,023.00
136033	313313UX4	109	FFCB D N	7/13/2009	3/30/2010		0.370%	0.371%	2,268,000	2,261,939.40	1,864.80	2,266,072.20	2,268.00
135815	313313UZ9	109	FFCB D N	7/1/2009	4/1/2010		0.450%	0.452%	2,806,000	2,796,389.45	3,226.90	2,803,588.40	3,972.05
136652	313313VP0	109	FFCB D N	8/24/2009	4/15/2010		0.340%	0.341%	5,000,000	4,988,950.00	1,794.44	4,995,372.22	4,627.78
135697	313313VT2	109	FFCB D N	6/25/2009	4/19/2010		0.440%	0.442%	5,000,000	4,981,788.89	5,988.89	4,995,277.78	7,500.00
135813	313313WH7	109	FFCB D N	7/2/2009	5/3/2010		0.480%	0.482%	5,000,000	4,979,666.67	6,066.67	4,994,947.22	9,213.88
136653	313313XE3	109	FFCB D N	8/24/2009	5/24/2010		0.380%	0.381%	4,000,000	3,988,473.33	1,604.44	3,995,561.11	5,483.34
135593	313313XY9	109	FFCB D N	6/16/2009	6/11/2010		0.550%	0.553%	500,000	497,250.00	817.36	499,262.08	1,194.72
136998	313313YE2	109	FFCB D N	9/11/2009	6/17/2010		0.400%	0.401%	314,000	313,026.60	69.78	313,525.60	429.22
137260	313313YL6	109	FFCB D N	9/29/2009	6/23/2010		0.260%	0.261%	20,000,000	19,961,433.33	288.89	19,969,083.33	7,361.11

MIAMI-DADE COUNTY
REPORT WRITER
AS OF DATE: September 30, 2009
SORTING ORDER: FUND ICC#

INVSMT NUMBER	CUSIP NUMBER	FUND NUMBER	DESCRIPTION	PURCHASE SET DATE	MATURITY DATE	CALL DATE	INTEREST RATE	YTM TRADING	SCHEDULED PAR VALUE	CURRENT BOOK VALUE	PERIOD-END INTEREST ACCRL	MARKET VALUE	UNREALIZED GAIN/LOSS
137261	313313YL6	109	FFCB D N	9/29/2009	6/23/2010		0.260%	0.261%	7,370,000	7,355,788.18	106.46	7,358,607.21	2,712.57
136621	313313ZC5	109	FFCB D N	8/19/2009	7/9/2010		0.440%	0.442%	4,150,000	4,133,566.00	2,181.06	4,142,218.75	6,471.69
133984	3136FHDD4	109	FNMA C I	3/23/2009	9/23/2011	3/23/2010	2.200%	2.200%	5,000,000	5,000,000.00	2,444.44	5,035,937.50	35,937.50
137246	31398AZH8	109	FNMA C I	9/28/2009	9/28/2011	9/28/2010	1.250%	1.250%	10,000,000	10,000,000.00	1,041.67	10,015,625.00	15,625.00
137324	3136FJEE7	109	FNMA C I	9/30/2009	12/30/2011	9/30/2010	1.320%	1.343%	6,000,000	5,997,000.00	220.00	6,009,375.00	12,375.00
134402	31398AWN8	109	FNMA C I	4/13/2009	4/13/2012	4/13/2010	2.150%	2.150%	5,000,000	5,000,000.00	50,166.67	5,034,375.00	34,375.00
136751	313385ND4	109	FHLB D N	9/1/2009	10/19/2009		0.140%	0.140%	1,000,000	999,813.33	116.67	999,985.00	55.00
132929	313385NH5	109	FHLB D N	1/15/2009	10/23/2009		0.600%	0.603%	3,511,000	3,494,556.81	15,155.82	3,510,935.63	1,223.00
134561	313385NQ5	109	FHLB D N	4/21/2009	10/30/2009		0.380%	0.381%	531,000	529,923.84	913.62	530,987.17	149.71
134449	313385NT9	109	FHLB D N	4/14/2009	11/2/2009		0.460%	0.461%	2,000,000	1,994,837.78	4,344.44	1,999,946.67	764.45
135246	313385NT9	109	FHLB D N	6/2/2009	11/2/2009		0.270%	0.270%	2,000,000	1,997,705.00	1,815.00	1,999,946.67	426.67
134589	313385PK6	109	FHLB D N	4/24/2009	11/18/2009		0.450%	0.451%	155,000	154,597.00	310.00	154,993.80	86.80
133212	313385PL4	109	FHLB D N	2/4/2009	11/19/2009		0.950%	0.957%	200,000	198,480.00	1,261.39	199,991.83	250.44
134523	313385PL4	109	FHLB D N	4/21/2009	11/19/2009		0.400%	0.401%	730,000	728,280.44	1,322.11	729,970.19	367.64
135240	313385PS9	109	FHLB D N	5/29/2009	11/25/2009		0.300%	0.300%	647,000	646,029.50	673.96	646,970.35	266.89
135695	313385PS9	109	FHLB D N	6/25/2009	11/25/2009		0.350%	0.351%	300,000	299,553.75	285.83	299,986.25	146.67
135008	313385PY6	109	FHLB D N	5/18/2009	12/1/2009		0.400%	0.401%	200,000	199,562.22	302.22	199,986.44	122.00
135009	313385PY6	109	FHLB D N	5/18/2009	12/1/2009		0.350%	0.351%	500,000	499,042.36	661.11	499,966.11	262.64
135217	313385PY6	109	FHLB D N	5/29/2009	12/1/2009		0.400%	0.401%	900,000	898,140.00	1,250.00	899,939.00	549.00
135234	313385PY6	109	FHLB D N	5/29/2009	12/1/2009		0.350%	0.351%	1,000,000	998,191.67	1,215.28	999,932.22	525.27
135470	313385PY6	109	FHLB D N	6/8/2009	12/1/2009		0.320%	0.321%	2,000,000	1,996,871.11	2,044.45	1,999,864.44	948.88
135648	313385PY6	109	FHLB D N	6/22/2009	12/1/2009		0.320%	0.320%	2,000,000	1,997,120.00	1,795.56	1,999,864.44	948.88
132536	313385QF6	109	FHLB D N	12/23/2008	12/8/2009		0.808%	0.814%	2,610,000	2,589,497.00	16,519.56	2,609,802.80	3,786.24
132598	313385QF6	109	FHLB D N	12/29/2008	12/8/2009		0.800%	0.806%	4,114,000	4,082,550.76	25,232.53	4,113,689.16	5,905.87
136664	313385QM1	109	FHLB D N	8/25/2009	12/14/2009		0.350%	0.350%	510,000	509,449.63	183.46	509,958.07	324.98
135010	313385QN9	109	FHLB D N	5/18/2009	12/15/2009		0.340%	0.341%	1,000,000	998,007.22	1,284.45	999,916.67	625.00
132626	313385QU3	109	FHLB D N	12/30/2008	12/21/2009		0.770%	0.776%	349,100	346,441.80	2,053.38	349,068.58	573.40
135276	313385QU3	109	FHLB D N	6/3/2009	12/21/2009		0.300%	0.301%	900,000	898,492.50	900.00	899,919.00	526.50
135691	313385RB4	109	FHLB D N	6/23/2009	12/28/2009		0.350%	0.351%	394,000	393,279.86	383.05	393,961.48	298.57
132893	313385RC2	109	FHLB D N	1/15/2009	12/29/2009		0.800%	0.806%	300,000	297,680.00	1,726.67	299,970.33	563.66
133210	313385RC2	109	FHLB D N	2/4/2009	12/29/2009		1.000%	1.009%	100,000	99,088.89	663.89	99,990.11	237.33
132630	313385RE8	109	FHLB D N	12/31/2008	12/31/2009		0.700%	0.705%	350,000	347,515.97	1,864.72	349,955.76	575.07
133869	313385RJ7	109	FHLB D N	3/16/2009	1/4/2010		1.000%	1.008%	150,000	148,775.00	829.17	149,980.21	376.04
135563	313385RJ7	109	FHLB D N	6/15/2009	1/4/2010		0.400%	0.401%	175,000	174,605.28	210.00	174,976.91	161.63
133976	313385RK4	109	FHLB D N	3/20/2009	1/5/2010		0.650%	0.653%	500,000	497,372.92	1,760.41	499,933.33	800.00
133992	313385RK4	109	FHLB D N	3/23/2009	1/5/2010		0.650%	0.653%	2,650,000	2,636,220.00	9,186.67	2,649,646.67	4,240.00
134938	313385RN8	109	FHLB D N	5/14/2009	1/8/2010		0.500%	0.502%	450,000	448,506.25	875.00	449,938.13	556.88
135247	313385RR9	109	FHLB D N	6/2/2009	1/11/2010		0.350%	0.351%	1,000,000	997,831.94	1,176.39	999,858.33	850.00
135249	313385RR9	109	FHLB D N	6/2/2009	1/11/2010		0.350%	0.351%	2,000,000	1,995,663.89	2,352.78	1,999,716.67	1,700.00
136519	313385RR9	109	FHLB D N	8/12/2009	1/11/2010		0.350%	0.351%	700,000	698,965.56	340.28	699,900.83	594.99
134593	313385RS7	109	FHLB D N	4/27/2009	1/12/2010		0.550%	0.552%	200,000	199,205.56	479.72	199,971.39	286.11
134316	313385SA5	109	FHLB D N	4/6/2009	1/20/2010		0.680%	0.684%	3,000,000	2,983,623.33	10,086.67	2,999,537.50	5,827.50
134455	313385SB3	109	FHLB D N	4/14/2009	1/21/2010		0.700%	0.704%	100,000	99,451.67	330.55	99,984.44	202.22
134590	313385SB3	109	FHLB D N	4/24/2009	1/21/2010		0.590%	0.593%	100,000	99,554.22	262.22	99,984.44	168.00
134594	313385SB3	109	FHLB D N	4/27/2009	1/21/2010		0.500%	0.502%	300,000	298,879.17	654.16	299,953.33	420.00
134074	313385SN7	109	FHLB D N	3/27/2009	2/1/2010		0.800%	0.806%	5,000,000	4,965,444.44	20,888.89	4,998,291.67	11,958.34
134104	313385SN7	109	FHLB D N	3/30/2009	2/1/2010		0.700%	0.704%	5,000,000	4,970,055.56	17,986.11	4,998,291.67	10,250.00
134145	313385SN7	109	FHLB D N	3/30/2009	2/1/2010		0.700%	0.704%	1,558,000	1,548,669.31	5,604.47	1,557,467.68	3,193.90
134198	313385SN7	109	FHLB D N	4/1/2009	2/1/2010		0.700%	0.704%	5,150,000	5,119,357.50	18,325.42	5,148,240.42	10,557.50
134691	313385SN7	109	FHLB D N	4/30/2009	2/1/2010		0.500%	0.502%	2,420,000	2,410,689.72	5,176.11	2,419,173.17	3,307.34
135495	313385SN7	109	FHLB D N	6/10/2009	2/1/2010		0.400%	0.401%	2,690,000	2,682,946.22	3,377.45	2,689,080.92	2,757.25
135510	313385SN7	109	FHLB D N	6/9/2009	2/1/2010		0.400%	0.401%	1,437,000	1,433,215.90	1,820.20	1,436,509.03	1,472.93
134906	313385SQ0	109	FHLB D N	5/12/2009	2/3/2010		0.500%	0.502%	300,000	298,887.50	591.67	299,895.83	416.66
134591	313385SX5	109	FHLB D N	4/24/2009	2/10/2010		0.550%	0.552%	200,000	199,107.78	488.89	199,926.67	330.00
135496	313385SX5	109	FHLB D N	6/10/2009	2/10/2010		0.450%	0.451%	1,011,000	1,007,903.81	1,428.04	1,010,629.30	1,297.45
135654	313385TD8	109	FHLB D N	6/23/2009	2/16/2010		0.360%	0.361%	1,200,000	1,197,144.00	1,200.00	1,199,540.00	1,196.00

MIAMI-DADE COUNTY
REPORT WRITER
AS OF DATE: September 30, 2009
SORTING ORDER: FUND ICC#

INVSMT NUMBER	CUSIP NUMBER	FUND NUMBER	DESCRIPTION	PURCHASE SET DATE	MATURITY DATE	CALL DATE	INTEREST RATE	YTM TRADING	SCHEDULED PAR VALUE	CURRENT BOOK VALUE	PERIOD-END INTEREST ACCRL	MARKET VALUE	UNREALIZED GAIN/LOSS
134138	313385TL0	109	FHLB D N	3/27/2009	2/23/2010		0.750%	0.755%	2,232,000	2,216,515.50	8,742.00	2,231,101.00	5,843.50
133975	313385TP1	109	FHLB D N	3/20/2009	2/26/2010		0.750%	0.755%	5,000,000	4,964,270.83	20,312.50	4,997,944.44	13,361.11
136796	313385TT3	109	FHLB D N	9/3/2009	3/2/2010		0.250%	0.250%	1,000,000	998,750.00	194.44	999,493.33	548.89
135591	313385UC8	109	FHLB D N	6/15/2009	3/11/2010		0.410%	0.411%	764,000	761,659.40	939.72	763,589.99	990.87
135655	313385UC8	109	FHLB D N	6/23/2009	3/11/2010		0.410%	0.411%	1,985,000	1,979,099.59	2,260.69	1,983,934.72	2,574.44
135656	313385UZ7	109	FHLB D N	6/23/2009	4/1/2010		0.430%	0.431%	1,000,000	996,631.67	1,194.44	999,241.67	1,415.56
136618	313385UZ7	109	FHLB D N	8/19/2009	4/1/2010		0.330%	0.331%	2,000,000	1,995,875.00	788.33	1,998,483.33	1,820.00
137002	313385UZ7	109	FHLB D N	9/14/2009	4/1/2010		0.250%	0.250%	2,500,000	2,496,545.14	295.14	2,498,104.17	1,263.89
134503	313385VT0	109	FHLB D N	4/20/2009	4/19/2010		0.730%	0.735%	4,000,000	3,970,475.56	13,302.22	3,996,666.67	12,888.89
136054	313385VV5	109	FHLB D N	7/15/2009	4/21/2010		0.410%	0.411%	1,500,000	1,495,216.67	1,332.50	1,498,737.50	2,188.33
134595	313385WA0	109	FHLB D N	4/27/2009	4/26/2010		0.700%	0.705%	600,000	595,753.33	1,831.67	599,482.50	1,897.50
136140	313385WB8	109	FHLB D N	7/21/2009	4/27/2010		0.410%	0.411%	1,276,000	1,271,930.98	1,046.32	1,274,894.13	1,916.83
135566	313385WS1	109	FHLB D N	6/15/2009	5/12/2010		0.500%	0.502%	5,000,000	4,977,013.89	7,500.00	4,995,354.17	10,840.28
135569	313385XP6	109	FHLB D N	6/12/2009	6/2/2010		0.560%	0.563%	307,000	305,304.68	530.09	306,563.04	728.27
136620	313385XP6	109	FHLB D N	8/19/2009	6/2/2010		0.440%	0.442%	900,000	896,843.00	473.00	898,719.00	1,403.00
136997	313385XY7	109	FHLB D N	9/11/2009	6/11/2010		0.330%	0.331%	1,200,000	1,196,997.00	220.00	1,198,229.00	1,012.00
137264	313385YZ3	109	FHLB D N	9/29/2009	7/6/2010		0.320%	0.321%	800,000	798,008.89	14.22	798,500.00	476.89
137263	313385ZJ8	109	FHLB D N	9/29/2009	7/15/2010		0.320%	0.321%	1,000,000	997,431.11	17.78	998,125.00	676.11
137161	313385A89	109	FHLB D N	9/24/2009	8/6/2010		0.350%	0.351%	12,000,000	11,963,133.33	816.67	11,973,750.00	9,800.00
137262	313385F92	109	FHLB D N	9/29/2009	9/16/2010		0.400%	0.402%	2,002,000	1,994,169.96	44.49	1,996,369.38	2,154.93
137191	313385G59	109	FHLB D N	9/24/2009	9/20/2010		0.400%	0.402%	8,000,000	7,967,911.35	622.22	7,977,500.00	8,966.43
135238	313397NT4	109	FHLMC D N	5/29/2009	11/2/2009		0.280%	0.280%	2,000,000	1,997,557.78	1,944.44	1,999,946.67	444.45
135277	313397NT4	109	FHLMC D N	6/3/2009	11/2/2009		0.250%	0.250%	2,316,000	2,313,555.33	1,930.00	2,315,938.24	452.91
135065	313397PA3	109	FHLMC D N	5/20/2009	11/9/2009		0.400%	0.401%	70,000	69,865.44	104.23	69,997.73	28.06
135653	313397PM7	109	FHLMC D N	6/23/2009	11/20/2009		0.300%	0.300%	1,450,000	1,448,187.50	1,208.33	1,449,939.58	543.75
136021	313397PX3	109	FHLMC D N	7/10/2009	11/30/2009		0.300%	0.300%	380,000	379,547.17	262.83	379,974.67	164.67
135498	313397QE4	109	FHLMC D N	6/10/2009	12/7/2009		0.400%	0.401%	480,000	479,040.00	602.67	479,964.27	321.60
135235	313397QU8	109	FHLMC D N	5/29/2009	12/21/2009		0.350%	0.351%	400,000	399,198.89	486.11	399,964.00	279.00
135825	313397QU8	109	FHLMC D N	7/6/2009	12/21/2009		0.320%	0.320%	1,957,000	1,954,077.55	1,513.41	1,956,823.87	1,232.91
134194	313397QX2	109	FHLMC D N	3/31/2009	12/24/2009		0.630%	0.633%	1,173,000	1,167,498.63	3,777.06	1,172,890.52	1,614.83
135775	313397RB9	109	FHLMC D N	6/30/2009	12/28/2009		0.340%	0.341%	883,000	881,490.56	775.57	882,913.66	647.53
135826	313397RB9	109	FHLMC D N	7/6/2009	12/28/2009		0.320%	0.320%	2,000,000	1,996,888.89	1,546.67	1,999,804.44	1,368.88
134103	313397RE3	109	FHLMC D N	3/30/2009	12/31/2009		0.630%	0.633%	15,000,000	14,927,550.00	48,562.50	14,998,104.17	21,991.67
135471	313397RE3	109	FHLMC D N	6/8/2009	12/31/2009		0.360%	0.361%	2,000,000	1,995,880.00	2,300.00	1,999,747.22	1,567.22
135800	313397RE3	109	FHLMC D N	7/2/2009	12/31/2009		0.350%	0.351%	1,500,000	1,497,345.83	1,327.09	1,499,810.42	1,137.50
133989	313397RJ2	109	FHLMC D N	3/23/2009	1/4/2010		0.610%	0.613%	10,000,000	9,951,369.44	32,533.34	9,998,680.56	14,777.78
134403	313397RJ2	109	FHLMC D N	4/13/2009	1/4/2010		0.585%	0.588%	5,000,000	4,978,387.50	13,893.75	4,999,340.28	7,059.03
134456	313397RJ2	109	FHLMC D N	4/14/2009	1/4/2010		0.580%	0.582%	2,000,000	1,991,461.11	5,477.78	1,999,736.11	2,797.22
135248	313397RJ2	109	FHLMC D N	6/2/2009	1/4/2010		0.340%	0.341%	2,000,000	1,995,920.00	2,285.56	1,999,736.11	1,530.55
135650	313397RJ2	109	FHLMC D N	6/22/2009	1/4/2010		0.380%	0.381%	900,000	898,138.00	959.50	899,881.25	783.75
137265	313397RL7	109	FHLMC D N	9/29/2009	1/6/2010		0.180%	0.180%	2,820,000	2,818,604.10	28.20	2,819,620.08	997.78
136138	313397RR4	109	FHLMC D N	7/21/2009	1/11/2010		0.300%	0.300%	30,000,000	29,956,500.00	18,000.00	29,995,750.00	21,250.00
137266	313397SA0	109	FHLMC D N	9/29/2009	1/20/2010		0.150%	0.150%	2,300,000	2,298,917.08	19.17	2,299,645.42	709.17
134195	313397SG7	109	FHLMC D N	4/1/2009	1/26/2010		0.640%	0.643%	6,000,000	5,968,000.00	19,520.00	5,999,025.00	11,505.00
134100	313397SK8	109	FHLMC D N	3/30/2009	1/29/2010		0.660%	0.664%	1,800,000	1,789,935.00	6,105.00	1,799,400.00	3,360.00
135748	313397SQ5	109	FHLMC D N	6/29/2009	2/3/2010		0.420%	0.421%	850,000	847,828.25	932.17	849,704.86	944.44
135097	313397SV4	109	FHLMC D N	5/21/2009	2/8/2010		0.420%	0.421%	2,000,000	1,993,863.33	3,103.34	1,999,277.78	2,311.11
135031	313397TK7	109	FHLMC D N	5/18/2009	2/22/2010		0.440%	0.442%	81,000	80,722.80	134.64	80,967.60	110.16
136940	313397UG4	109	FHLMC D N	9/4/2009	3/15/2010		0.260%	0.260%	10,000,000	9,986,133.33	1,950.00	9,994,500.00	6,416.67
136139	313397UH2	109	FHLMC D N	7/21/2009	3/16/2010		0.400%	0.401%	800,000	797,884.44	640.00	799,557.33	1,032.89
136662	313397UJ8	109	FHLMC D N	8/24/2009	3/17/2010		0.320%	0.321%	169,000	168,692.04	57.09	168,905.92	156.79
136941	313397UP4	109	FHLMC D N	9/4/2009	3/22/2010		0.250%	0.250%	10,000,000	9,986,180.56	1,875.00	9,994,266.67	6,211.11
136192	313397UW9	109	FHLMC D N	7/28/2009	3/29/2010		0.370%	0.371%	3,000,000	2,992,476.67	2,004.17	2,998,210.00	3,729.16
136486	313397UY5	109	FHLMC D N	8/11/2009	3/31/2010		0.350%	0.351%	1,000,000	997,744.44	495.83	999,245.83	1,005.56
136616	313397UY5	109	FHLMC D N	8/19/2009	3/31/2010		0.330%	0.331%	510,000	508,952.80	201.03	509,615.38	461.55
136675	313397UY5	109	FHLMC D N	8/25/2009	3/31/2010		0.270%	0.270%	858,000	856,597.17	238.10	857,352.93	517.66

MIAMI-DADE COUNTY
REPORT WRITER
AS OF DATE: September 30, 2009
SORTING ORDER: FUND ICC#

INVSMT NUMBER	CUSIP NUMBER	FUND NUMBER	DESCRIPTION	PURCHASE SET DATE	MATURITY DATE	CALL DATE	INTEREST RATE	YTM TRADING	SCHEDULED PAR VALUE	CURRENT BOOK VALUE	PERIOD-END INTEREST ACCRL	MARKET VALUE	UNREALIZED GAIN/LOSS
136939	313397VP3	109	FHLMC D N	9/4/2009	4/15/2010		0.290%	0.291%	22,000,000	21,960,479.44	4,785.00	21,982,033.33	16,768.89
136942	313397VP3	109	FHLMC D N	9/4/2009	4/15/2010		0.290%	0.291%	30,000,000	29,946,108.33	6,525.00	29,975,500.00	22,866.67
135702	313397VQ1	109	FHLMC D N	6/25/2009	4/16/2010		0.450%	0.452%	1,500,000	1,494,468.75	1,837.50	1,498,768.75	2,462.50
137288	313397VT5	109	FHLMC D N	9/30/2009	4/19/2010		0.210%	0.210%	10,000,000	9,988,275.00	58.33	9,991,666.67	3,333.34
137003	313397VU2	109	FHLMC D N	9/14/2009	4/20/2010		0.260%	0.260%	1,800,000	1,797,166.00	221.00	1,798,492.50	1,105.50
135497	313397WK3	109	FHLMC D N	6/10/2009	5/5/2010		0.550%	0.553%	1,400,000	1,392,963.06	2,416.94	1,398,740.00	3,360.00
135657	313397WK3	109	FHLMC D N	6/23/2009	5/5/2010		0.510%	0.512%	1,500,000	1,493,285.00	2,125.00	1,498,650.00	3,240.00
135706	313397WK3	109	FHLMC D N	6/24/2009	5/5/2010		0.510%	0.512%	538,000	535,599.18	754.54	537,515.80	1,162.08
136650	313397WK3	109	FHLMC D N	8/24/2009	5/5/2010		0.400%	0.401%	1,085,000	1,081,937.89	458.11	1,084,023.50	1,627.50
137126	313397WK3	109	FHLMC D N	9/22/2009	5/5/2010		0.280%	0.280%	1,600,000	1,597,200.00	112.00	1,598,560.00	1,248.00
137004	313397WR8	109	FHLMC D N	9/14/2009	5/11/2010		0.270%	0.270%	2,500,000	2,495,518.75	318.75	2,497,687.50	1,850.00
135499	313397WS6	109	FHLMC D N	6/10/2009	5/12/2010		0.500%	0.502%	2,400,000	2,388,800.00	3,766.67	2,397,770.00	5,203.33
136489	313397WX5	109	FHLMC D N	8/11/2009	5/17/2010		0.440%	0.442%	3,000,000	2,989,770.00	1,870.00	2,997,150.00	5,510.00
137127	313397WX5	109	FHLMC D N	9/22/2009	5/17/2010		0.250%	0.250%	1,500,000	1,497,531.25	93.75	1,498,575.00	950.00
135543	313397XN6	109	FHLMC D N	6/10/2009	6/1/2010		0.550%	0.553%	1,670,000	1,660,917.06	2,883.07	1,667,632.78	3,832.65
136750	313397XN6	109	FHLMC D N	9/1/2009	6/1/2010		0.350%	0.351%	2,338,000	2,331,794.56	681.92	2,334,685.89	2,209.41
136943	313397C90	109	FHLMC D N	9/4/2009	8/23/2010		0.430%	0.432%	25,000,000	24,894,590.28	8,062.50	24,945,312.50	42,659.72
134076	31331GQF9	109	FFCB C I	3/27/2009	3/23/2011	3/23/2010	1.850%	1.850%	1,000,000	1,000,000.00	411.11	1,005,312.50	5,312.50
136445	31331GE62	109	FFCB C I	8/6/2009	4/29/2011	10/29/2009	1.200%	1.288%	15,000,000	14,981,000.00	31,000.00	15,009,375.00	31,875.00
136111	31331GB99	109	FFCB C I	7/20/2009	7/20/2011	10/20/2009	1.240%	1.342%	10,000,000	9,980,000.00	24,455.56	10,000,000.00	20,000.00
136999	31331GP86	109	FFCB C I	9/11/2009	9/9/2011	12/9/2009	1.240%	1.240%	4,000,000	4,000,275.56	3,031.12	4,000,000.00	0.00
137157	31331GS59	109	FFCB C I	9/23/2009	9/23/2011	12/23/2009	1.200%	1.302%	2,000,000	1,996,000.00	533.33	1,991,250.00	(4,750.00)
131348	31331GDE6	109	FFCB C I	10/14/2008	10/14/2011	10/14/2009	3.700%	3.707%	5,000,000	4,999,167.12	85,819.44	5,004,687.50	5,520.38
137020	31331GQ69	109	FFCB C I	9/15/2009	3/15/2012	12/15/2009	1.750%	1.771%	4,000,000	3,998,000.00	3,111.11	4,003,750.00	5,750.00
134504	31331GTK5	109	FFCB C I	4/20/2009	4/20/2012	4/20/2010	2.020%	2.020%	5,000,000	5,000,000.00	45,169.44	5,031,250.00	31,250.00
137164	31331GT66	109	FFCB C I	9/24/2009	9/24/2012	12/24/2009	2.090%	2.107%	10,000,000	9,995,000.00	4,063.89	10,003,125.00	8,125.00
133536	31331GNG0	109	FFCB C I	2/25/2009	2/25/2013	2/25/2010	3.000%	3.000%	5,000,000	5,000,000.00	15,000.00	5,037,500.00	37,500.00
137033	31331GR35	109	FFCB C I	9/16/2009	9/16/2013	12/16/2009	2.690%	2.690%	5,000,000	5,000,000.00	5,604.17	5,004,687.50	4,687.50
137163	31331GT74	109	FFCB C I	9/24/2009	9/24/2013	12/24/2009	2.800%	2.827%	11,000,000	10,989,000.00	5,988.89	11,027,500.00	38,500.00
136124	31331GYG8	109	FFCB C I	7/20/2009	12/23/2013	10/9/2009	3.000%	3.018%	3,990,000	3,995,985.00	32,585.00	3,991,246.88	4,239.38
135801	31331GZR3	109	FFCB C I	7/2/2009	7/2/2014	10/9/2009	3.550%	3.550%	1,500,000	1,500,000.00	13,164.58	1,500,468.75	468.75
137128	31331GS42	109	FFCB C I	9/22/2009	9/22/2014	9/22/2011	3.000%	3.005%	1,000,000	999,750.00	750.00	1,001,250.00	1,500.00
132503	313589MK6	109	FNMA D N	12/19/2008	10/1/2009		0.600%	0.603%	6,000,000	5,971,400.00	28,599.99	6,000,000.00	0.01
132659	313589MK6	109	FNMA D N	1/2/2009	10/1/2009		0.630%	0.633%	5,000,000	4,976,200.00	23,800.00	5,000,000.00	0.00
133211	313589MK6	109	FNMA D N	2/4/2009	10/1/2009		0.700%	0.703%	850,000	846,049.86	3,950.14	850,000.00	0.00
133317	313589MK6	109	FNMA D N	2/10/2009	10/1/2009		0.600%	0.602%	2,264,000	2,255,208.13	8,791.87	2,264,000.00	0.00
136795	313589MQ3	109	FNMA D N	9/2/2009	10/6/2009		0.140%	0.140%	2,400,000	2,399,682.67	270.66	2,399,990.00	36.67
133868	313589MR1	109	FNMA D N	3/16/2009	10/7/2009		0.625%	0.627%	500,000	498,220.49	1,727.43	499,997.50	49.58
137114	313589MZ3	109	FNMA D N	9/21/2009	10/15/2009		0.095%	0.095%	1,500,000	1,499,905.00	39.58	1,499,982.50	37.92
135006	313589NA7	109	FNMA D N	5/15/2009	10/16/2009		0.280%	0.280%	706,000	705,154.37	763.26	705,991.18	73.55
134588	313589ND1	109	FNMA D N	4/24/2009	10/19/2009		0.360%	0.361%	160,000	159,715.20	256.00	159,997.60	26.40
133562	313589NW9	109	FNMA D N	2/26/2009	11/5/2009		0.900%	0.906%	200,000	198,740.00	1,085.00	199,994.17	169.17
132660	313589PH0	109	FNMA D N	1/2/2009	11/16/2009		0.770%	0.775%	15,000,000	14,897,975.00	87,266.67	14,999,425.00	14,183.33
134714	313589PY3	109	FNMA D N	5/6/2009	12/1/2009		0.400%	0.401%	2,230,000	2,224,821.44	3,667.11	2,229,848.86	1,360.31
135799	313589PY3	109	FNMA D N	7/2/2009	12/1/2009		0.310%	0.310%	900,000	898,822.00	705.25	899,939.00	411.75
133758	313589QE6	109	FNMA D N	3/5/2009	12/7/2009		0.745%	0.749%	318,000	316,177.11	1,381.97	317,976.33	417.25
133100	313589RC9	109	FNMA D N	1/29/2009	12/29/2009		0.785%	0.791%	1,650,000	1,637,982.96	8,814.89	1,649,836.83	3,038.98
133930	313589RD7	109	FNMA D N	3/19/2009	12/30/2009		0.600%	0.603%	40,000,000	39,809,333.33	130,666.67	39,995,000.00	55,000.00
134068	313589RD7	109	FNMA D N	3/25/2009	12/30/2009		0.600%	0.603%	623,000	620,092.67	1,972.83	622,922.13	856.63
134197	313589RD7	109	FNMA D N	4/1/2009	12/30/2009		0.620%	0.623%	9,000,000	8,957,685.00	28,365.00	8,998,875.00	12,825.00
134047	313589RE5	109	FNMA D N	3/26/2009	12/31/2009		0.610%	0.613%	20,000,000	19,905,111.11	64,050.00	19,997,472.22	28,311.11
134073	313589RE5	109	FNMA D N	3/27/2009	12/31/2009		0.620%	0.623%	15,000,000	14,927,925.00	48,566.67	14,998,104.17	21,612.50
133883	313589RJ4	109	FNMA D N	3/13/2009	1/4/2010		0.830%	0.836%	477,750	474,478.60	2,224.99	477,686.96	983.37
133931	313589RJ4	109	FNMA D N	3/19/2009	1/4/2010		0.650%	0.653%	8,988,000	8,940,775.55	31,807.53	8,986,814.08	14,231.00
134636	313589RJ4	109	FNMA D N	4/28/2009	1/4/2010		0.430%	0.431%	1,485,000	1,480,547.89	2,767.05	1,484,804.06	1,489.12
134905	313589RJ4	109	FNMA D N	5/12/2009	1/4/2010		0.400%	0.401%	2,000,000	1,994,733.33	3,155.56	1,999,736.11	1,847.22

MIAMI-DADE COUNTY
REPORT WRITER
AS OF DATE: September 30, 2009
SORTING ORDER: FUND ICC#

INVSMT NUMBER	CUSIP NUMBER	FUND NUMBER	DESCRIPTION	PURCHASE SET DATE	MATURITY DATE	CALL DATE	INTEREST RATE	YTM TRADING	SCHEDULED PAR VALUE	CURRENT BOOK VALUE	PERIOD-END INTEREST ACCRL	MARKET VALUE	UNREALIZED GAIN/LOSS
133775	313589SN4	109	FNMA D N	3/10/2009	2/1/2010		0.920%	0.928%	1,000,000	991,617.78	5,238.89	999,658.33	2,801.66
136685	313589TE3	109	FNMA D N	8/26/2009	2/17/2010		0.270%	0.270%	452,000	451,406.75	122.04	451,825.48	296.69
134571	313589TK9	109	FNMA D N	4/24/2009	2/22/2010		0.525%	0.527%	5,000,000	4,977,833.33	11,666.67	4,998,000.00	8,500.00
137267	313589TK9	109	FNMA D N	9/29/2009	2/22/2010		0.250%	0.250%	665,000	664,325.76	9.24	664,734.00	399.00
133932	313589TS2	109	FNMA D N	3/19/2009	3/1/2010		0.700%	0.705%	2,002,000	1,988,492.06	7,629.85	2,000,992.33	4,870.42
137289	313589TU7	109	FNMA D N	9/30/2009	3/3/2010		0.190%	0.190%	4,000,000	3,996,748.89	21.11	3,997,960.00	1,190.00
134899	313589VL4	109	FNMA D N	5/12/2009	4/12/2010		0.550%	0.553%	400,000	397,952.78	867.78	399,678.33	857.77
136167	313589YU1	109	FNMA D N	7/23/2009	7/1/2010		0.480%	0.482%	1,500,000	1,493,140.00	1,400.00	1,497,656.25	3,116.25
136475	313589A45	109	FNMA D N	8/10/2009	8/2/2010		0.550%	0.553%	1,000,000	994,545.83	794.44	997,812.50	2,472.23
137158	3.13589E+30	109	FNMA D N	9/24/2009	9/1/2010		0.400%	0.402%	5,000,000	4,981,000.00	388.89	4,985,937.50	4,548.61
137190	3.13589E+30	109	FNMA D N	9/24/2009	9/1/2010		0.390%	0.391%	25,000,000	24,907,375.00	1,895.83	24,929,687.50	20,416.67
137193	3.13359E+11	109	FNMA D N	9/25/2009	9/1/2010		0.390%	0.391%	4,000,000	3,985,223.33	260.00	3,985,483.33	0.00
132323	31331GGS2	109	FFCB - BULLET	12/11/2008	6/11/2010		2.000%	2.000%	11,000,000	11,000,000.00	67,222.22	11,113,437.50	113,437.50
132324	31331GGS2	109	FFCB - BULLET	12/11/2008	6/11/2010		2.000%	2.000%	10,000,000	10,000,000.00	61,111.11	10,103,125.00	103,125.00
132325	31331GGS2	109	FFCB - BULLET	12/11/2008	6/11/2010		2.000%	2.000%	5,000,000	5,000,000.00	30,555.56	5,051,562.50	51,562.50
129494	31331Y2P4	109	FFCB - BULLET	7/7/2008	7/7/2010		3.300%	3.300%	4,350,000	4,350,000.00	33,495.00	4,445,156.25	95,156.25
137165	31331GT90	109	FFCB - BULLET	9/24/2009	3/24/2011		0.750%	0.757%	25,000,000	24,997,500.00	3,645.83	24,960,937.50	(36,562.50)
136141	31331GA25	109	FFCB - BULLET	7/21/2009	7/13/2011		1.200%	1.243%	20,000,000	19,988,733.33	52,000.00	20,006,250.00	22,850.00
137247	31331GV22	109	FFCB - BULLET	9/28/2009	10/3/2011		1.125%	1.226%	15,000,000	14,970,000.00	1,406.25	14,943,750.00	(26,250.00)
134815	31331GVL0	109	FFCB - BULLET	5/7/2009	5/7/2012		1.875%	1.875%	5,000,000	5,000,000.00	37,500.00	5,035,937.50	35,937.50
134044	31331GR66	109	FFCB - BULLET	3/26/2009	3/26/2013		2.500%	2.511%	10,000,000	9,996,506.50	3,472.22	10,134,375.00	137,868.50
134872	31331GVD8	109	FFCB - BULLET	5/8/2009	4/8/2013		2.200%	2.251%	5,000,000	4,990,500.00	43,694.44	5,014,062.50	23,562.50
134097	3133XTF27	109	FHLB - BULLET	3/30/2009	9/30/2010		1.250%	1.250%	5,000,000	5,000,000.00	173.61	5,034,375.00	34,375.00
136131	3133XU7D9	109	FHLB - BULLET	7/20/2009	1/18/2011		0.750%	0.900%	1,500,000	1,496,795.00	2,343.75	1,501,406.25	4,736.25
134604	3133XTLJ3	109	FHLB - BULLET	4/28/2009	4/28/2011		1.375%	1.375%	3,000,000	3,000,000.00	17,531.25	3,028,125.00	28,125.00
134572	3133XTJ64	109	FHLB - BULLET	4/24/2009	5/16/2011		1.375%	1.406%	5,000,000	4,998,377.78	31,510.42	5,046,875.00	50,025.00
135290	3133XTV45	109	FHLB - BULLET	6/4/2009	6/3/2011		1.125%	1.147%	5,000,000	4,997,850.00	18,281.25	5,026,562.50	28,712.50
135457	3133XTV45	109	FHLB - BULLET	6/8/2009	6/3/2011		1.125%	1.461%	10,000,000	9,935,750.00	36,562.50	10,053,125.00	118,625.00
133011	3133XSWM6	109	FHLB - BULLET	1/23/2009	1/23/2012		2.100%	2.100%	3,000,000	3,000,000.00	11,900.00	3,060,000.00	60,000.00
134597	3133XTL87	109	FHLB - BULLET	4/27/2009	4/27/2012		1.850%	1.867%	4,170,000	4,167,915.00	33,000.92	4,218,215.63	50,300.63
127331	31398APJ5	109	FNMA BULLET	3/14/2008	3/10/2010		3.000%	3.000%	7,000,000	7,000,000.00	12,250.00	7,078,750.00	78,750.00
134108	3136FHHV0	109	FNMA - BULLET	3/30/2009	9/30/2010		1.200%	1.200%	20,000,000	20,000,000.00	666.67	20,125,000.00	125,000.00
134105	3136FHHW8	109	FNMA - BULLET	3/30/2009	3/30/2011		1.600%	1.600%	10,000,000	10,000,000.00	444.44	10,131,250.00	131,250.00
135098	3136FHQY4	109	FNMA BULLET	5/21/2009	5/21/2012		2.000%	2.000%	3,225,000	3,225,000.00	23,291.67	3,274,382.81	49,382.81
136702	31398AYM8	109	FNMA - BULLET	8/28/2009	8/10/2012		1.750%	1.815%	4,000,000	3,996,060.00	9,916.67	4,018,750.00	26,190.00
136042	3128X83Q3	109	FHLMC STEP UP	7/14/2009	6/30/2010	12/30/2009	1.000%	1.000%	5,000,000	5,001,944.44	12,638.88	5,004,687.50	4,687.50
133370	3136FHAQ8	109	FNMA STEP UP	2/17/2009	2/17/2010	2/17/2010	2.000%	2.000%	15,000,000	15,000,000.00	36,666.67	15,075,000.00	75,000.00
134328	3136FHJG1	109	FNMA STEP UP	4/7/2009	4/7/2010	4/7/2010	1.375%	1.375%	5,000,000	5,000,000.00	33,229.17	5,023,437.50	23,437.50
134360	3136FHHR9	109	FNMA STEP UP	4/9/2009	4/9/2010	4/9/2010	1.500%	1.500%	4,050,000	4,050,000.00	29,025.00	4,066,453.13	16,453.13
134606	3136FHMM4	109	FNMA STEP UP	4/28/2009	10/28/2011	4/28/2010	1.250%	1.250%	5,000,000	5,000,000.00	26,562.50	5,025,000.00	25,000.00
135273	3133XTR65	109	FHLB STEP UP	6/3/2009	12/3/2009	12/3/2009	0.500%	0.608%	4,000,000	3,998,000.00	6,555.56	4,001,250.00	3,250.00
136028	3133XTZQ2	109	FHLB STEP UP	7/13/2009	1/13/2010		0.750%	0.750%	2,650,000	2,650,000.00	4,306.25	2,652,484.38	2,484.38
136112	3133XU4F7	109	FHLB STEP UP	7/20/2009	1/20/2010		0.750%	0.750%	5,200,000	5,200,000.00	7,691.67	5,201,625.00	1,625.00
135755	3133XTVT0	109	FHLB STEP UP	6/30/2009	6/30/2010	6/30/2010	1.000%	1.000%	1,000,000	1,000,000.00	2,527.78	1,005,000.00	5,000.00
		109 Total							1,432,431,642	1,429,627,395.57	2,412,167.57	1,433,472,205.63	2,829,506.32
136218	912795R86	119	TREASURY BILLS	7/30/2009	1/14/2010		0.230%	0.230%	773,000	772,170.31	311.13	772,758.45	277.01
		119 Total							773,000	772,170.31	311.13	772,758.45	277.01
134470	912795P70	123	TREASURY BILLS	4/16/2009	10/15/2009		0.330%	0.331%	1,208,000	1,205,984.65	1,860.32	1,208,000.00	155.03
		123 Total							1,208,000	1,205,984.65	1,860.32	1,208,000.00	155.03
134683	313397PA3	154	FHLMC D N	5/1/2009	11/9/2009		0.310%	0.311%	7,220,000	7,208,062.93	9,512.35	7,219,765.35	2,190.07
		154 Total							7,220,000	7,208,062.93	9,512.35	7,219,765.35	2,190.07
137388	WACHOVIA8	300	WACHOVIA INT BEARIN	9/22/2009	10/1/2009		0.247%	0.247%	2,000,000	2,000,000.00	123.30	2,000,000.00	0.00
137622	WACHOVIA8	300	WACHOVIA INT BEARIN	9/1/2009	10/1/2009		0.247%	0.247%	100,000	100,000.00	20.55	100,000.00	0.00
134241	912795P54	300	TREASURY BILLS	4/2/2009	10/1/2009		0.410%	0.411%	5,000,000	4,989,636.11	10,363.89	5,000,000.00	0.00
133430	3128X8JU7	300	FHLMC C I	2/18/2009	2/18/2011	2/18/2010	2.000%	2.000%	1,000,000	1,000,000.00	2,388.89	1,005,625.00	5,625.00
135223	313385PM2	300	FHLB D N	5/29/2009	11/20/2009		0.320%	0.320%	1,270,000	1,268,024.44	1,411.11	1,269,947.08	511.53

MIAMI-DADE COUNTY
REPORT WRITER
AS OF DATE: September 30, 2009
SORTING ORDER: FUND ICC#

INVSMT NUMBER	CUSIP NUMBER	FUND NUMBER	DESCRIPTION	PURCHASE SET DATE	MATURITY DATE	CALL DATE	INTEREST RATE	YTM TRADING	SCHEDULED PAR VALUE	CURRENT BOOK VALUE	PERIOD-END INTEREST ACCRL	MARKET VALUE	UNREALIZED GAIN/LOSS
137301	313385QU3	300	FHLB D N	9/30/2009	12/21/2009		0.150%	0.150%	1,000,000	999,658.33	4.17	999,910.00	247.50
135224	313385RB4	300	FHLB D N	5/29/2009	12/28/2009		0.380%	0.381%	405,000	404,089.43	534.37	404,960.40	336.60
137196	313397MX6	300	FHLMC D N	9/25/2009	10/13/2009		0.080%	0.080%	1,500,000	1,499,940.00	20.00	1,499,985.00	25.00
137150	313589NL3	300	FNMA D N	9/23/2009	10/26/2009		0.110%	0.110%	1,000,000	999,899.17	24.44	999,979.17	55.56
134607	3133XTLJ3	300	FHLB - BULLET	4/28/2009	4/28/2011		1.375%	1.375%	1,000,000	1,000,000.00	5,843.75	1,009,375.00	9,375.00
134142	3136FHHV0	300	FNMA - BULLET	3/30/2009	9/30/2010		1.200%	1.200%	2,000,000	2,000,000.00	66.67	2,012,500.00	12,500.00
134396	3128X8UW0	300	FHLMC STEP UP	4/13/2009	10/7/2009	10/7/2009	1.150%	1.150%	1,500,000	1,500,287.50	8,337.50	1,500,468.75	468.75
134608	3136FHMM4	300	FNMA STEP UP	4/28/2009	4/28/2010	4/28/2010	1.250%	1.250%	1,000,000	1,000,000.00	5,312.50	1,005,000.00	5,000.00
		300 Total							18,775,000	18,761,534.98	34,451.14	18,807,750.40	34,144.94
137390	WACHOVIA8	411	WACHOVIA INT BEARIN	9/1/2009	10/1/2009		0.247%	0.247%	10,006,714	10,006,714.23	2,056.28	10,006,714.23	0.00
137404	REGIONS17	411	REGIONS INT BEARING	9/1/2009	10/1/2009		0.296%	0.296%	25,005,960	25,005,959.54	6,165.84	25,005,959.54	0.00
135165	912795Q53	411	TREASURY BILLS	5/28/2009	11/27/2009		0.295%	0.295%	5,000,000	4,992,502.10	5,162.49	5,000,000.00	2,335.41
137294	912795T43	411	TREASURY BILLS	9/30/2009	2/25/2010		0.135%	0.135%	10,000,000	9,994,450.00	37.50	9,993,750.40	(737.10)
137295	912795T50	411	TREASURY BILLS	9/30/2009	3/4/2010		0.155%	0.155%	10,000,000	9,993,326.39	43.06	9,993,750.40	380.95
135115	912795U41	411	TREASURY BILLS	5/22/2009	5/6/2010		0.425%	0.427%	5,000,000	4,979,399.31	7,791.66	4,993,750.00	6,589.03
131093	912828JL5	411	TREASURY NOTES	9/30/2008	9/30/2010		2.000%	2.085%	5,000,000	4,995,909.68	274.73	5,078,124.80	82,215.12
133538	3128X8LN0	411	FHLMC C I	2/25/2009	2/25/2011	2/25/2010	2.000%	2.000%	2,000,000	2,000,000.00	4,000.00	2,011,250.00	11,250.00
134699	3128X8A28	411	FHLMC C I	5/4/2009	5/4/2012	11/4/2009	2.125%	2.125%	3,000,000	3,000,000.00	26,031.25	3,003,750.00	3,750.00
134948	313313QR2	411	FFCB D N	5/14/2009	12/18/2009		0.400%	0.401%	500,000	498,788.89	777.78	499,956.67	390.00
137269	313313YL6	411	FFCB D N	9/29/2009	6/23/2010		0.260%	0.261%	10,000,000	9,980,716.67	144.44	9,984,541.67	3,680.56
133985	3136FHER2	411	FNMA C I	3/23/2009	9/23/2011	3/23/2010	2.150%	2.150%	5,000,000	5,000,000.00	2,388.89	5,031,250.00	31,250.00
133986	3136FHDU6	411	FNMA C I	3/23/2009	9/23/2011	3/23/2010	2.100%	2.100%	2,825,000	2,825,000.00	1,318.33	2,843,539.06	18,539.06
134698	31398AWX6	411	FNMA C I	5/4/2009	5/4/2012	5/4/2010	2.150%	2.150%	1,000,000	1,000,000.00	8,779.17	1,006,875.00	6,875.00
134940	313385MK9	411	FHLB D N	5/14/2009	10/1/2009		0.220%	0.220%	239,000	238,795.52	204.48	239,000.00	0.00
135116	313385PM2	411	FHLB D N	5/22/2009	11/20/2009		0.300%	0.300%	10,000,000	9,984,833.33	11,000.00	9,999,583.33	3,750.00
134648	313385PR1	411	FHLB D N	4/29/2009	11/24/2009		0.370%	0.371%	2,000,000	1,995,703.89	3,186.11	1,999,910.00	1,020.00
132634	313385QP4	411	FHLB D N	12/31/2008	12/16/2009		0.800%	0.806%	2,000,000	1,984,444.44	12,177.78	1,999,831.11	3,208.89
134614	313385RZ1	411	FHLB D N	4/28/2009	1/19/2010		0.440%	0.441%	1,000,000	996,748.89	1,906.67	999,847.22	1,191.66
133026	313385SB3	411	FHLB D N	1/23/2009	1/21/2010		0.900%	0.908%	2,150,000	2,130,488.75	13,491.25	2,149,665.56	5,685.56
134651	313385SN7	411	FHLB D N	4/30/2009	2/1/2010		0.500%	0.502%	4,000,000	3,984,611.11	8,555.56	3,998,633.33	5,466.66
137298	313385UZ7	411	FHLB D N	9/30/2009	4/1/2010		0.220%	0.220%	2,000,000	1,997,763.33	12.22	1,998,483.33	707.78
135099	313385VW3	411	FHLB D N	5/21/2009	4/22/2010		0.550%	0.553%	175,000	174,101.67	355.59	174,851.98	394.72
136668	313385YM2	411	FHLB D N	8/25/2009	6/24/2010		0.600%	0.603%	155,000	154,217.25	95.58	154,759.49	446.66
132919	313397QU8	411	FHLMC D N	1/16/2009	12/21/2009		0.700%	0.705%	10,000,000	9,934,083.33	50,166.67	9,999,100.00	14,850.00
133486	313397QU8	411	FHLMC D N	2/23/2009	12/21/2009		0.850%	0.856%	800,000	794,314.44	4,155.56	799,928.00	1,458.00
135035	313397QW4	411	FHLMC D N	5/19/2009	12/23/2009		0.340%	0.341%	2,000,000	1,995,882.22	2,550.00	1,999,815.56	1,383.34
134641	313397SV4	411	FHLMC D N	4/29/2009	2/8/2010		0.490%	0.492%	5,000,000	4,980,604.17	10,548.61	4,998,194.44	7,041.66
135100	313397SV4	411	FHLMC D N	5/21/2009	2/8/2010		0.420%	0.421%	3,000,000	2,990,795.00	4,655.00	2,998,916.67	3,466.67
135014	313397TK7	411	FHLMC D N	5/18/2009	2/22/2010		0.440%	0.442%	4,000,000	3,986,311.11	6,648.89	3,998,400.00	5,440.00
137299	313397VT5	411	FHLMC D N	9/30/2009	4/19/2010		0.210%	0.210%	5,000,000	4,994,137.50	29.17	4,995,833.33	1,666.66
136447	31331GE62	411	FFCB C I	8/6/2009	4/29/2011	10/29/2009	1.200%	1.288%	2,000,000	1,997,466.67	4,133.34	2,001,250.00	4,250.00
137300	31331GS59	411	FFCB C I	9/30/2009	9/23/2011	12/23/2009	1.200%	1.277%	5,000,000	4,993,666.67	1,333.34	4,978,125.00	(14,375.00)
131349	31331GDE6	411	FFCB C I	10/14/2008	10/14/2011	10/14/2009	3.700%	3.707%	5,000,000	4,999,167.12	85,819.44	5,004,687.50	5,520.38
137021	31331GQ69	411	FFCB C I	9/15/2009	3/15/2012	12/15/2009	1.750%	1.771%	4,000,000	3,998,000.00	3,111.11	4,003,750.00	5,750.00
133537	31331GNG0	411	FFCB C I	2/25/2009	2/25/2013	2/25/2010	3.000%	3.000%	5,000,000	5,000,000.00	15,000.00	5,037,500.00	37,500.00
132790	313589MK6	411	FNMA D N	1/8/2009	10/1/2009		0.550%	0.552%	5,000,000	4,979,680.56	20,319.44	5,000,000.00	0.00
135036	313589NT6	411	FNMA D N	5/19/2009	11/2/2009		0.330%	0.331%	600,000	599,081.50	742.50	599,984.00	160.00
134562	313589RE5	411	FNMA D N	4/23/2009	12/31/2009		0.420%	0.421%	5,000,000	4,985,300.00	9,391.67	4,999,368.06	4,676.39
134639	313589RJ4	411	FNMA D N	4/29/2009	1/4/2010		0.450%	0.451%	1,000,000	996,875.00	1,937.50	999,868.06	1,055.56
134640	313589RJ4	411	FNMA D N	4/29/2009	1/4/2010		0.410%	0.411%	5,000,000	4,985,763.89	8,826.39	4,999,340.28	4,750.00
134546	313589TK9	411	FNMA D N	4/22/2009	2/22/2010		0.565%	0.568%	5,000,000	4,975,987.50	12,712.50	4,998,000.00	9,300.00
134573	313589TK9	411	FNMA D N	4/24/2009	2/22/2010		0.525%	0.527%	4,000,000	3,982,266.67	9,333.33	3,998,400.00	6,800.00
137296	313589TK9	411	FNMA D N	9/30/2009	2/22/2010		0.170%	0.170%	4,200,000	4,197,124.17	19.83	4,198,320.00	1,176.00
137297	313589TU7	411	FNMA D N	9/30/2009	3/3/2010		0.190%	0.190%	3,300,000	3,297,317.83	17.42	3,298,317.00	981.75
130258	31331Y6H8	411	FFCB - BULLET	8/18/2008	2/18/2010		3.150%	3.150%	10,000,000	10,000,000.00	37,625.00	10,109,375.00	109,375.00
132326	31331GGS2	411	FFCB - BULLET	12/11/2008	6/11/2010		2.000%	2.000%	5,000,000	5,000,000.00	30,555.56	5,051,562.50	51,562.50

MIAMI-DADE COUNTY
REPORT WRITER
AS OF DATE: September 30, 2009
SORTING ORDER: FUND ICC#

INVSMT NUMBER	CUSIP NUMBER	FUND NUMBER	DESCRIPTION	PURCHASE SET DATE	MATURITY DATE	CALL DATE	INTEREST RATE	YTM TRADING	SCHEDULED PAR VALUE	CURRENT BOOK VALUE	PERIOD-END INTEREST ACCRL	MARKET VALUE	UNREALIZED GAIN/LOSS
132327	31331GGS2	411	FFCB - BULLET	12/11/2008	6/11/2010		2.000%	2.000%	5,000,000	5,000,000.00	30,555.56	5,051,562.50	51,562.50
132328	31331GGS2	411	FFCB - BULLET	12/11/2008	6/11/2010		2.000%	2.000%	4,800,000	4,800,000.00	29,333.33	4,849,500.00	49,500.00
129480	31331Y2P4	411	FFCB - BULLET	7/7/2008	7/7/2010		3.300%	3.300%	5,000,000	5,000,000.00	38,500.00	5,109,375.00	109,375.00
130715	31331GAE9	411	FFCB - BULLET	9/12/2008	9/2/2010		3.200%	3.200%	10,000,000	10,000,000.00	25,777.78	10,231,250.00	231,250.00
133230	31331GKY4	411	FFCB - BULLET	2/5/2009	1/17/2012		2.000%	2.220%	5,000,000	4,973,466.73	20,555.56	5,067,187.50	93,720.77
134818	31331GVL0	411	FFCB - BULLET	5/7/2009	5/7/2012		1.875%	1.875%	5,000,000	5,000,000.00	37,500.00	5,035,937.50	35,937.50
134050	31331GRG6	411	FFCB - BULLET	3/26/2009	3/26/2013		2.500%	2.511%	5,000,000	4,998,253.25	1,736.11	5,067,187.50	68,934.25
134878	31331GVD8	411	FFCB - BULLET	5/8/2009	4/8/2013		2.200%	2.251%	5,000,000	4,990,500.00	43,694.44	5,014,062.50	23,562.50
134633	3133XTKT2	411	FHLB - BULLET	4/28/2009	1/28/2011		1.250%	1.250%	2,000,000	2,000,000.00	4,375.00	2,015,000.00	15,000.00
134611	3133XTLJ3	411	FHLB - BULLET	4/28/2009	4/28/2011		1.375%	1.375%	5,000,000	5,000,000.00	29,218.75	5,046,875.00	46,875.00
134547	3133XTJ64	411	FHLB - BULLET	4/22/2009	5/16/2011		1.375%	1.386%	4,000,000	3,999,996.67	25,208.34	4,037,500.00	38,420.00
133012	3133XSWM6	411	FHLB - BULLET	1/23/2009	1/23/2012		2.100%	2.100%	5,000,000	5,000,000.00	19,833.33	5,100,000.00	100,000.00
134598	3133XTL87	411	FHLB - BULLET	4/27/2009	4/27/2012		1.850%	1.867%	2,000,000	1,999,000.00	15,827.78	2,023,125.00	24,125.00
127265	31398APK2	411	FNMA BULLET	3/12/2008	3/5/2010		3.050%	3.050%	8,115,000	8,115,000.00	17,875.53	8,206,293.75	91,293.75
134143	3136FHHV0	411	FNMA - BULLET	3/30/2009	9/30/2010		1.200%	1.200%	5,000,000	5,000,000.00	166.67	5,031,250.00	31,250.00
133440	3128X8JM5	411	FHLMC STEP UP	2/19/2009	2/19/2010	11/19/2009	2.250%	2.450%	2,000,000	1,998,997.26	5,250.00	2,005,625.00	6,627.74
136019	3136FHN68	411	FNMA STEP UP	7/9/2009	12/9/2009		0.750%	0.750%	750,000	750,000.00	1,281.25	750,234.38	234.38
133371	3136FHAQ8	411	FNMA STEP UP	2/17/2009	2/17/2010	2/17/2010	2.000%	2.000%	6,525,000	6,525,000.00	15,950.00	6,557,625.00	32,625.00
136690	3136FJAP6	411	FNMA STEP UP	8/27/2009	8/27/2010		1.000%	1.050%	4,000,000	3,998,000.00	3,777.78	4,006,250.00	8,250.00
		411 Total							306,146,674	305,726,514.25	802,006.14	307,441,653.15	1,510,692.26
136559	912795T27	414	TREASURY BILLS	8/14/2009	2/11/2010		0.260%	0.260%	119,751	119,594.46	41.51	119,713.58	77.61
136560	912795T27	414	TREASURY BILLS	8/14/2009	2/11/2010		0.260%	0.260%	6,249	6,240.83	2.17	6,247.05	4.05
137326	912795UL3	414	TREASURY BILLS	9/30/2009	4/1/2010		0.200%	0.200%	1,057,475	1,056,399.90	5.87	1,056,483.60	77.83
137327	912795UL3	414	TREASURY BILLS	9/30/2009	4/1/2010		0.200%	0.200%	379,182	378,796.50	2.11	378,826.51	27.90
137328	912795UL3	414	TREASURY BILLS	9/30/2009	4/1/2010		0.200%	0.200%	956,343	955,370.72	5.31	955,446.41	70.38
135242	313385PY6	414	FHLB D N	6/1/2009	12/1/2009		0.300%	0.300%	620,831	619,884.23	631.18	620,788.92	273.51
135260	313385PY6	414	FHLB D N	6/1/2009	12/1/2009		0.300%	0.300%	855,169	853,864.87	869.42	855,111.04	376.75
135545	313385QM1	414	FHLB D N	6/15/2009	12/14/2009		0.290%	0.290%	799,147	797,975.36	695.26	799,081.29	410.67
135546	313385QM1	414	FHLB D N	6/15/2009	12/14/2009		0.290%	0.290%	495,958	495,230.87	431.48	495,917.22	254.87
135547	313385QM1	414	FHLB D N	6/15/2009	12/14/2009		0.290%	0.290%	376,349	375,797.23	327.42	376,318.06	193.41
135548	313385QM1	414	FHLB D N	6/15/2009	12/14/2009		0.290%	0.290%	202,123	201,826.67	175.84	202,106.38	103.87
135549	313385QM1	414	FHLB D N	6/15/2009	12/14/2009		0.290%	0.290%	219,728	219,405.85	191.17	219,709.93	112.91
135550	313385QM1	414	FHLB D N	6/15/2009	12/14/2009		0.290%	0.290%	58,422	58,336.35	50.83	58,417.20	30.02
135551	313385QM1	414	FHLB D N	6/15/2009	12/14/2009		0.290%	0.290%	473,572	472,877.69	412.01	473,533.06	243.36
135552	313385QM1	414	FHLB D N	6/15/2009	12/14/2009		0.290%	0.290%	14,194	14,173.19	12.35	14,192.83	7.29
135553	313385QM1	414	FHLB D N	6/15/2009	12/14/2009		0.290%	0.290%	55,124	55,043.18	47.96	55,119.47	28.33
135554	313385QM1	414	FHLB D N	6/15/2009	12/14/2009		0.290%	0.290%	72,694	72,587.42	63.25	72,688.02	37.35
135555	313385QM1	414	FHLB D N	6/15/2009	12/14/2009		0.290%	0.290%	820,998	819,794.33	714.27	820,930.50	421.90
135556	313385QM1	414	FHLB D N	6/15/2009	12/14/2009		0.290%	0.290%	96,172	96,031.00	83.67	96,164.09	49.42
135570	313385QM1	414	FHLB D N	6/15/2009	12/14/2009		0.290%	0.290%	97,519	97,376.03	84.84	97,510.98	50.11
134464	313397MX6	414	FHLMC D N	4/15/2009	10/13/2009		0.400%	0.401%	110,000	109,778.78	206.55	109,998.90	13.57
137022	313397UG4	414	FHLMC D N	9/15/2009	3/15/2010		0.240%	0.240%	12,920	12,904.41	1.38	12,912.89	7.10
137023	313397UG4	414	FHLMC D N	9/15/2009	3/15/2010		0.240%	0.240%	214,080	213,821.68	22.83	213,962.26	117.75
135756	313589RE5	414	FNMA D N	6/30/2009	12/31/2009		0.250%	0.250%	701,059	700,163.20	452.77	700,970.39	354.42
135757	313589RE5	414	FNMA D N	6/30/2009	12/31/2009		0.250%	0.250%	629,941	629,136.08	406.83	629,861.38	318.47
		414 Total							9,445,000	9,432,410.83	5,938.28	9,442,011.96	3,662.85
136522	NOWCITYN3	500	NOW CITY NATL CHALKS	8/6/2009	2/16/2010		0.100%	0.100%	2,675	2,675.00	0.42	2,675.00	0.00
136523	NOWCITYN3	500	NOW CITY NATL 1100 L	8/6/2009	2/16/2010		0.100%	0.100%	14,596	14,595.64	2.27	14,595.64	0.00
136536	NOWCITYN3	500	NOW CITY NATL PEDRO	7/13/1998	2/16/2010		0.100%	0.100%	10,490	10,490.41	119.42	10,490.41	0.00
136537	NOWCITYN3	500	NOW CITY NATL SOHOTA	8/26/1999	2/16/2010		0.100%	0.100%	5,000	5,000.00	51.24	5,000.00	0.00
136538	NOWCITYN3	500	NOW CITY NATL MTGE E	8/17/2005	2/16/2010		0.100%	0.100%	71,657	71,657.36	299.77	71,657.36	0.00
136539	NOWCITYN3	500	NOW CITY NATL H BASS	5/27/2008	2/16/2010		0.100%	0.100%	248,761	248,761.10	339.97	248,761.10	0.00
136540	NOWCITYN3	500	NOW CITY NATL CHALKS	6/26/2008	2/16/2010		0.100%	0.100%	10,700	10,700.00	13.73	10,700.00	0.00
136541	NOWCITYN3	500	NOW CITY NATL CHALKS	8/14/2008	2/16/2010		0.100%	0.100%	2,675	2,675.00	3.07	2,675.00	0.00
136542	NOWCITYN3	500	NOW CITY NATL CHALKS	9/9/2008	2/16/2010		0.100%	0.100%	2,675	2,675.00	2.88	2,675.00	0.00
136543	NOWCITYN3	500	NOW CITY NATL CHALKS	10/3/2008	2/16/2010		0.100%	0.100%	2,675	2,675.00	2.70	2,675.00	0.00

MIAMI-DADE COUNTY
REPORT WRITER
AS OF DATE: September 30, 2009
SORTING ORDER: FUND ICC#

INVSMT NUMBER	CUSIP NUMBER	FUND NUMBER	DESCRIPTION	PURCHASE SET DATE	MATURITY DATE	CALL DATE	INTEREST RATE	YTM TRADING	SCHEDULED PAR VALUE	CURRENT BOOK VALUE	PERIOD-END INTEREST ACCRL	MARKET VALUE	UNREALIZED GAIN/LOSS
136544	NOWCITYN3	500	NOW CITY NATL CHALKS	11/6/2008	2/16/2010		0.100%	0.100%	2,675	2,675.00	2.44	2,675.00	0.00
132269	NOWCITYN3	500	NOW CITY NATL CHALKS	12/4/2008	3/17/2010		0.200%	0.200%	2,675	2,675.00	4.47	2,675.00	0.00
132272	NOWCITYN3	500	NOW CITY NATL CHALKS	12/5/2008	3/17/2010		0.200%	0.200%	13,375	13,375.00	22.29	13,375.00	0.00
133231	NOWCITYN3	500	NOW CITY NATL CHALKS	2/5/2009	3/17/2010		0.200%	0.200%	2,675	2,675.00	3.54	2,675.00	0.00
133441	NOWCITYN3	500	NOW CITY NATL CHALKS	2/18/2009	3/17/2010		0.200%	0.200%	2,675	2,675.00	3.34	2,675.00	0.00
133815	NOWCITYN3	500	NOW CITY NATL CHALKS	3/12/2009	3/17/2010		0.200%	0.200%	2,675	2,675.00	3.02	2,675.00	0.00
134420	NOWCITYN3	500	NOW CITY NATL CHALKS	4/13/2009	3/17/2010		0.200%	0.200%	2,675	2,675.00	2.54	2,675.00	0.00
135167	NOWCITYN3	500	NOW CITY NATL CHALKS	5/14/2009	3/17/2010		0.100%	0.100%	2,675	2,675.00	1.04	2,675.00	0.00
135168	NOWCITYN3	500	NOW CITY NATL 1100LN	5/21/2009	3/17/2010		0.100%	0.100%	14,596	14,595.64	5.39	14,595.64	0.00
135467	NOWCITYN3	500	NOW CITY NATL 110 L	6/4/2009	3/17/2010		0.100%	0.100%	14,596	14,595.64	4.82	14,595.64	0.00
135557	NOWCITYN3	500	NOW CITY NATL Chalks	6/12/2009	3/17/2010		0.100%	0.100%	2,675	2,675.00	0.82	2,675.00	0.00
135943	NOWCITYN3	500	NOW CITY NATL 1100 V	7/6/2009	3/17/2010		0.100%	0.100%	14,596	14,595.64	3.53	14,595.64	0.00
136057	NOWCITYN3	500	NOW CITY NATL Chalks	7/14/2009	3/17/2010		0.100%	0.100%	2,675	2,675.00	0.59	2,675.00	0.00
136944	NOWCITYN3	500	NOW CITY NATL 1100 L	9/4/2009	3/17/2010		0.100%	0.100%	14,596	14,595.64	1.09	14,595.64	0.00
137024	NOWCITYN3	500	NOW CITY NATL CHALKS	9/14/2009	3/17/2010		0.100%	0.100%	2,675	2,675.00	0.13	2,675.00	0.00
137325	NOWCITYN3	500	NOW CITY NATL Fideli	9/30/2009	3/25/2010		0.100%	0.100%	142,430	142,429.54	0.40	142,429.54	0.00
		500 Total							612,842	612,841.61	894.92	612,841.61	0.00
137100	313385NE2	511	FHLB D N	9/18/2009	10/20/2009		0.090%	0.090%	950,000	949,924.00	30.88	949,984.96	30.08
137152	313589ND1	511	FNMA D N	9/23/2009	10/19/2009		0.120%	0.120%	600,000	599,948.00	16.00	599,991.00	27.00
134578	313589NF6	511	FNMA D N	4/24/2009	10/21/2009		0.330%	0.331%	450,000	449,257.50	660.00	449,992.50	75.00
		511 Total							2,000,000	1,999,129.50	706.88	1,999,968.46	132.08
137197	313397NL1	522	FHLMC D N	9/25/2009	10/26/2009		0.100%	0.100%	700,000	699,939.72	11.67	699,985.42	34.03
		522 Total							700,000	699,939.72	11.67	699,985.42	34.03
137302	313589MX8	555	FNMA D N	9/30/2009	10/13/2009		0.100%	0.100%	1,000,000	999,963.89	2.78	999,990.00	23.33
137303	313589NT6	555	FNMA D N	9/30/2009	11/2/2009		0.080%	0.080%	906,000	905,933.56	2.01	905,975.84	40.27
		555 Total							1,906,000	1,905,897.45	4.79	1,905,965.84	63.60
137392	WACHOVIA8	700	WACHOVIA INT BEARIN	9/1/2009	10/1/2009		0.247%	0.247%	5,003,289	5,003,288.56	1,028.12	5,003,288.56	0.00
136492	3133XUGP2	700	FHLB C I	8/11/2009	2/4/2011	11/4/2009	1.000%	1.137%	1,000,000	998,194.44	1,583.33	1,000,625.00	2,625.00
134613	313589TK9	700	FNMA D N	4/28/2009	2/22/2010		0.490%	0.492%	1,000,000	995,916.67	2,123.33	999,600.00	1,560.00
136450	3133XU5F6	700	FHLB STEP UP	8/6/2009	1/27/2010		0.500%	0.553%	1,000,000	999,875.00	888.89	1,000,937.50	1,187.50
		700 Total							8,003,289	7,997,274.67	5,623.67	8,004,451.06	5,372.50
137427	825252869	712	AIM MONEY MARKET - D	9/21/2009	10/1/2009		0.049%	0.049%	1,000,000	1,000,000.00	13.50	1,000,000.00	0.00
137428	825252869	712	AIM MONEY MARKET - D	9/24/2009	10/1/2009		0.049%	0.049%	1,401,300	1,401,300.00	13.25	1,401,300.00	0.00
137429	825252869	712	AIM MONEY MARKET - D	9/28/2009	10/1/2009		0.049%	0.049%	91,700	91,700.00	0.37	91,700.00	0.00
137430	825252869	712	AIM MONEY MARKET - D	9/29/2009	10/1/2009		0.049%	0.049%	2,850,900	2,850,900.00	7.70	2,850,900.00	0.00
137431	825252869	712	AIM MONEY MARKET - D	9/30/2009	10/1/2009		0.049%	0.049%	4,303,300	4,303,300.00	5.81	4,303,300.00	0.00
137307	3128X9FU9	712	FHLMC C I	9/30/2009	12/30/2011	12/31/2009	1.300%	1.300%	2,000,000	2,000,000.00	72.22	2,001,875.00	1,875.00
133050	3128X8FM9	712	FHLMC C I	1/27/2009	1/27/2012	1/27/2010	2.000%	2.000%	3,000,000	3,000,000.00	10,666.67	3,013,125.00	13,125.00
136493	3133XUGP2	712	FHLB C I	8/11/2009	2/4/2011	11/4/2009	1.000%	1.137%	1,000,000	998,194.44	1,583.33	1,000,625.00	2,625.00
136046	3133XTW6	712	FHLB C I	7/14/2009	6/17/2011	10/19/2009	1.250%	1.283%	3,000,000	3,000,937.50	10,833.33	3,000,000.00	1,875.00
135184	313313PR3	712	FFCB D N	5/28/2009	11/24/2009		0.300%	0.300%	5,335,000	5,326,997.50	5,601.75	5,334,759.93	2,160.68
134512	313313QJ0	712	FFCB D N	4/20/2009	12/11/2009		0.470%	0.471%	47,000	46,855.80	100.63	46,996.29	39.86
136706	313313SZ2	712	FFCB D N	8/28/2009	2/12/2010		0.230%	0.230%	400,400	399,970.24	86.98	400,250.96	193.74
137222	313313WX2	712	FFCB D N	9/28/2009	5/17/2010		0.250%	0.250%	795,000	793,724.69	16.56	794,144.05	402.80
134967	313385ML7	712	FHLB D N	5/15/2009	10/2/2009		0.240%	0.239%	560	559.48	0.52	560.00	0.00
132913	313385MT0	712	FHLB D N	1/15/2009	10/9/2009		0.580%	0.582%	3,000	2,987.10	12.51	2,999.98	0.37
135225	313385PL4	712	FHLB D N	5/29/2009	11/19/2009		0.350%	0.351%	1,000,000	998,308.33	1,215.28	999,959.17	435.56
134531	313385RK4	712	FHLB D N	4/21/2009	1/5/2010		0.550%	0.552%	707,000	704,202.44	1,760.63	706,905.73	942.66
136115	313385RK4	712	FHLB D N	7/20/2009	1/5/2010		0.350%	0.351%	950,000	948,439.10	674.23	949,873.33	760.00
134932	313385RN8	712	FHLB D N	5/13/2009	1/8/2010		0.450%	0.451%	450,000	448,650.00	793.13	449,938.13	495.00
135950	313385RS7	712	FHLB D N	1/15/2009	1/12/2010		0.750%	0.756%	1,850,000	1,836,047.92	9,982.29	1,849,735.35	3,705.14
134623	313385RZ1	712	FHLB D N	4/28/2009	1/19/2010		0.440%	0.441%	2,006,500	1,999,976.65	3,825.72	2,006,193.45	2,391.08
135615	313385SG2	712	FHLB D N	6/18/2009	1/26/2010		0.350%	0.351%	2,000,000	1,995,683.33	2,041.67	1,999,675.00	1,950.00
134656	313385SN7	712	FHLB D N	4/30/2009	2/1/2010		0.500%	0.502%	6,000,000	5,976,916.67	12,833.33	5,997,600.00	8,200.00
135505	313385SN7	712	FHLB D N	6/10/2009	2/1/2010		0.400%	0.401%	2,310,000	2,303,942.67	2,900.33	2,309,210.75	2,367.75
135257	313385SV9	712	FHLB D N	6/2/2009	2/8/2010		0.400%	0.401%	1,041,000	1,038,096.77	1,399.57	1,040,624.08	1,127.74

MIAMI-DADE COUNTY
REPORT WRITER
AS OF DATE: September 30, 2009
SORTING ORDER: FUND ICC#

INVSMT NUMBER	CUSIP NUMBER	FUND NUMBER	DESCRIPTION	PURCHASE SET DATE	MATURITY DATE	CALL DATE	INTEREST RATE	YTM TRADING	SCHEDULED PAR VALUE	CURRENT BOOK VALUE	PERIOD-END INTEREST ACCRL	MARKET VALUE	UNREALIZED GAIN/LOSS
135617	313385UZ7	712	FHLB D N	6/18/2009	4/1/2010		0.470%	0.472%	2,000,000	1,992,506.11	2,741.67	1,998,483.33	3,235.55
137231	313385YM2	712	FHLB D N	9/28/2009	6/24/2010		0.350%	0.351%	270,000	269,293.88	7.87	269,581.05	279.30
137271	313385F92	712	FHLB D N	9/29/2009	9/16/2010		0.400%	0.402%	734,000	731,129.24	16.31	731,935.63	790.08
136571	313397MK4	712	FHLMC D N	8/17/2009	10/1/2009		0.160%	0.160%	126,300	126,274.74	25.26	126,300.00	0.00
134661	313397QE4	712	FHLMC D N	4/30/2009	12/7/2009		0.400%	0.401%	3,000,000	2,992,633.33	5,133.34	2,999,776.67	2,010.00
135613	313397RE3	712	FHLMC D N	6/18/2009	12/31/2009		0.370%	0.371%	285,000	284,425.88	307.56	284,963.98	230.54
135521	313397RJ2	712	FHLMC D N	6/11/2009	1/4/2010		0.400%	0.401%	295,500	294,820.35	367.73	295,461.01	272.93
135614	313397RZ6	712	FHLMC D N	6/18/2009	1/19/2010		0.370%	0.371%	1,000,000	997,790.28	1,079.17	999,847.22	977.77
137233	313397SH5	712	FHLMC D N	9/28/2009	1/27/2010		0.180%	0.180%	800,000	799,516.00	12.00	799,868.89	340.89
135616	313397SQ5	712	FHLMC D N	6/18/2009	2/3/2010		0.400%	0.401%	1,000,000	997,444.44	1,166.67	999,652.78	1,041.67
135056	313397SV4	712	FHLMC D N	5/19/2009	2/8/2010		0.420%	0.421%	8,000,000	7,975,266.67	12,600.00	7,997,111.11	9,244.44
136710	313397TD3	712	FHLMC D N	8/28/2009	2/16/2010		0.260%	0.260%	2,009,100	2,006,604.25	493.35	2,008,329.85	1,232.25
135506	313397TK7	712	FHLMC D N	6/10/2009	2/22/2010		0.400%	0.401%	1,240,000	1,236,459.11	1,556.89	1,239,504.00	1,488.00
136119	313397TK7	712	FHLMC D N	7/20/2009	2/22/2010		0.330%	0.331%	1,914,800	1,910,991.14	1,281.32	1,914,034.08	1,761.62
135671	313397TL5	712	FHLMC D N	6/23/2009	2/23/2010		0.400%	0.401%	6,330,000	6,312,768.33	7,033.33	6,327,450.42	7,648.76
137312	313397WA5	712	FHLMC D N	9/30/2009	4/26/2010		0.210%	0.210%	7,500	7,490.90	0.04	7,493.53	2.59
135058	313589PH0	712	FNMA D N	5/19/2009	11/16/2009		0.300%	0.300%	4,000,000	3,993,966.67	4,500.00	3,999,846.67	1,380.00
134551	313589QE6	712	FNMA D N	4/22/2009	12/7/2009		0.450%	0.451%	263,000	262,247.16	532.58	262,980.42	200.68
135078	313589RC9	712	FNMA D N	5/20/2009	12/29/2009		0.350%	0.351%	10,000,000	9,978,319.44	13,027.78	9,999,011.11	7,663.89
134663	313589RJ4	712	FNMA D N	4/30/2009	1/4/2010		0.410%	0.411%	4,000,000	3,988,656.67	7,015.55	3,999,472.22	3,800.00
134537	313589RZ8	712	FNMA D N	4/21/2009	1/19/2010		0.520%	0.522%	2,000,000	1,992,113.33	4,708.89	1,999,694.44	2,872.22
134933	313589TK9	712	FNMA D N	5/13/2009	2/22/2010		0.470%	0.472%	8,000,000	7,970,233.33	14,726.67	7,996,800.00	11,840.00
135618	313589TK9	712	FNMA D N	6/18/2009	2/22/2010		0.400%	0.401%	1,989,000	1,983,497.10	2,320.50	1,988,204.40	2,386.80
136189	313589TN3	712	FNMA D N	7/24/2009	2/25/2010		0.320%	0.321%	4,824,000	4,814,737.92	2,958.72	4,822,030.20	4,333.56
130259	31331Y6H8	712	FFCB - BULLET	8/18/2008	2/18/2010		3.150%	3.150%	3,000,000	3,000,000.00	11,287.50	3,032,812.50	32,812.50
132336	31331GGS2	712	FFCB - BULLET	12/11/2008	6/11/2010		2.000%	2.000%	3,000,000	3,000,000.00	18,333.33	3,030,937.50	30,937.50
127271	31398APK2	712	FNMA BULLET	3/12/2008	3/5/2010		3.050%	3.050%	1,000,000	1,000,000.00	2,202.77	1,011,250.00	11,250.00
136696	3136FJAP6	712	FNMA STEP UP	8/27/2009	8/27/2010	8/27/2010	1.000%	1.050%	1,000,000	999,500.00	944.44	1,001,562.50	2,062.50
136125	3133XU4F7	712	FHLB STEP UP	7/20/2009	1/20/2010		0.750%	0.750%	1,000,000	1,000,000.00	1,479.17	1,000,312.50	312.50
		712 Total							116,630,860	116,386,376.90	184,301.72	116,697,309.21	187,080.92
137435	825252869	713	AIM MONEY MARKET - D	9/1/2009	10/1/2009		0.049%	0.049%	942,500	942,500.00	38.82	942,500.00	0.00
137436	825252869	713	AIM MONEY MARKET - D	9/28/2009	10/1/2009		0.049%	0.049%	677,100	677,100.00	2.79	677,100.00	0.00
137437	825252869	713	AIM MONEY MARKET - D	9/30/2009	10/1/2009		0.049%	0.049%	437,300	437,300.00	0.60	437,300.00	0.00
137331	3128X9FU9	713	FHLMC C I	9/30/2009	12/30/2011	12/31/2009	1.300%	1.300%	1,000,000	1,000,000.00	36.11	1,000,937.50	937.50
135185	313313PR3	713	FFCB D N	5/28/2009	11/24/2009		0.300%	0.300%	1,000,000	998,500.00	1,050.00	999,955.00	405.00
134513	313313QJ0	713	FFCB D N	4/20/2009	12/11/2009		0.470%	0.471%	722,000	719,784.86	1,545.88	721,943.04	612.30
135519	313385MX1	713	FHLB D N	6/11/2009	10/13/2009		0.230%	0.230%	87,000	86,931.08	62.25	86,999.13	5.80
134621	313385NQ5	713	FHLB D N	4/28/2009	10/30/2009		0.330%	0.331%	700,000	698,812.92	1,001.00	699,983.08	169.16
137226	313385PD2	713	FHLB D N	9/28/2009	11/12/2009		0.120%	0.120%	800,000	799,880.00	8.00	799,972.00	84.00
135731	313385QP4	713	FHLB D N	6/29/2009	12/16/2009		0.310%	0.310%	767,000	765,877.20	620.84	766,935.23	437.19
136121	313385QU3	713	FHLB D N	7/20/2009	12/21/2009		0.350%	0.351%	443,000	442,336.73	314.41	442,960.13	308.99
134624	313385RZ1	713	FHLB D N	4/28/2009	1/19/2010		0.440%	0.441%	83,500	83,228.53	159.21	83,487.24	99.50
135258	313385SV9	713	FHLB D N	6/2/2009	2/8/2010		0.400%	0.401%	359,000	357,998.79	482.66	358,870.36	388.91
137203	313385XY7	713	FHLB D N	9/25/2009	7/11/2010		0.310%	0.278%	550,000	548,773.35	25.47	549,140.63	341.81
137202	313385ZJ8	713	FHLB D N	9/25/2009	7/15/2010		0.330%	0.331%	800,000	797,851.33	44.00	798,500.00	604.67
136572	313397MK4	713	FHLMC D N	8/17/2009	10/1/2009		0.160%	0.160%	706,500	706,358.70	141.30	706,500.00	0.00
135729	313397MP3	713	FHLMC D N	6/29/2009	10/5/2009		0.250%	0.250%	657,000	656,552.88	428.87	656,997.81	16.06
136414	313397MP3	713	FHLMC D N	8/5/2009	10/5/2009		0.220%	0.220%	600,000	599,776.33	209.00	599,998.00	12.67
135255	313397MR9	713	FHLMC D N	6/2/2009	10/7/2009		0.235%	0.235%	157,000	156,869.84	124.01	156,999.22	5.37
137108	313397MR9	713	FHLMC D N	9/18/2009	10/7/2009		0.100%	0.100%	351,600	351,581.44	12.70	351,598.24	4.10
135016	313397PA3	713	FHLMC D N	5/18/2009	11/9/2009		0.315%	0.315%	500,500	499,733.61	595.59	500,483.73	154.53
135784	313397RJ2	713	FHLMC D N	7/1/2009	1/4/2010		0.350%	0.351%	288,000	287,476.40	257.60	287,962.00	228.00
137232	313397RJ2	713	FHLMC D N	9/28/2009	1/4/2010		0.150%	0.150%	860,000	859,648.83	10.75	859,886.53	226.95
137230	313397RK9	713	FHLMC D N	9/28/2009	1/5/2010		0.130%	0.130%	2,000,000	1,999,285.00	21.67	1,999,733.33	426.66
134511	313397SG7	713	FHLMC D N	4/20/2009	1/26/2010		0.550%	0.552%	313,000	311,656.27	784.24	312,949.14	508.63
136120	313397TK7	713	FHLMC D N	7/20/2009	2/22/2010		0.330%	0.331%	585,200	584,035.94	391.60	584,965.92	538.38

MIAMI-DADE COUNTY
REPORT WRITER
AS OF DATE: September 30, 2009
SORTING ORDER: FUND ICC#

INVSMT NUMBER	CUSIP NUMBER	FUND NUMBER	DESCRIPTION	PURCHASE SET DATE	MATURITY DATE	CALL DATE	INTEREST RATE	YTM TRADING	SCHEDULED PAR VALUE	CURRENT BOOK VALUE	PERIOD-END INTEREST ACCRL	MARKET VALUE	UNREALIZED GAIN/LOSS
135672	313397TL5	713	FHLMC D N	6/23/2009	2/23/2010		0.400%	0.401%	1,086,000	1,083,043.67	1,206.67	1,085,562.58	1,312.24
137234	313397VM0	713	FHLMC D N	9/28/2009	4/13/2010		0.220%	0.220%	4,000,000	3,995,184.44	73.33	3,996,766.67	1,508.90
134510	313589NQ2	713	FNMA D N	4/20/2009	10/30/2009		0.400%	0.401%	330,000	329,292.33	601.34	329,992.03	98.36
134534	313589PE7	713	FNMA D N	4/21/2009	11/13/2009		0.500%	0.501%	79,000	78,773.97	178.85	78,997.17	44.35
135059	313589PH0	713	FNMA D N	5/19/2009	11/16/2009		0.300%	0.300%	2,000,000	1,996,983.33	2,250.00	1,999,923.33	690.00
136116	313589PJ6	713	FNMA D N	7/20/2009	11/17/2009		0.250%	0.250%	760,000	759,366.67	385.28	759,970.23	218.28
137228	313589QG1	713	FNMA D N	9/28/2009	12/9/2009		0.130%	0.130%	568,000	567,852.32	6.15	567,956.45	97.98
135783	313589RB1	713	FNMA D N	7/1/2009	12/28/2009		0.350%	0.351%	1,215,000	1,212,873.75	1,086.75	1,214,881.20	920.70
136117	313589SF1	713	FNMA D N	7/20/2009	1/25/2010		0.350%	0.351%	523,000	522,038.99	371.18	522,915.74	505.57
137213	313589UJ0	713	FNMA D N	9/25/2009	3/17/2010		0.200%	0.200%	383,600	383,231.32	12.79	383,386.46	142.35
133374	3136FHAQ8	713	FNMA STEP UP	2/17/2009	2/17/2010	2/17/2010	2.000%	2.000%	1,500,000	1,500,000.00	3,666.67	1,507,500.00	7,500.00
713 Total									28,831,800	28,798,490.82	18,208.38	28,832,509.12	19,554.91
137445	825252869	714	AIM MONEY MARKET - D	9/15/2009	10/1/2009		0.048%	0.048%	12,082,700	12,082,700.00	255.41	12,082,700.00	0.00
137446	825252869	714	AIM MONEY MARKET - D	9/25/2009	10/1/2009		0.048%	0.048%	1,392,000	1,392,000.00	11.03	1,392,000.00	0.00
137447	825252869	714	AIM MONEY MARKET - D	9/28/2009	10/1/2009		0.048%	0.048%	8,353,300	8,353,300.00	33.11	8,353,300.00	0.00
137448	825252869	714	AIM MONEY MARKET - D	9/30/2009	10/1/2009		0.048%	0.048%	3,351,900	3,351,900.00	4.43	3,351,900.00	0.00
137171	313385MP8	714	FHLB D N	9/24/2009	10/5/2009		0.100%	0.100%	4,900,000	4,899,850.28	95.28	4,899,983.67	38.11
137172	313385MR4	714	FHLB D N	9/24/2009	10/7/2009		0.070%	0.070%	11,496,000	11,495,709.41	156.47	11,495,942.52	76.64
136723	313385MT0	714	FHLB D N	8/31/2009	10/9/2009		0.160%	0.160%	4,430,000	4,429,232.13	610.36	4,429,970.47	127.98
136729	313397MX6	714	FHLMC D N	8/31/2009	10/13/2009		0.140%	0.140%	1,645,000	1,644,724.92	198.31	1,644,983.55	60.32
135017	313397PA3	714	FHLMC D N	5/18/2009	11/9/2009		0.315%	0.315%	2,726,800	2,722,624.59	3,244.89	2,726,711.38	841.90
137211	313589MY6	714	FNMA D N	9/25/2009	10/14/2009		0.100%	0.100%	1,000,000	999,947.22	16.67	999,989.17	25.28
714 Total									51,377,700	51,371,988.55	4,625.96	51,377,480.76	1,170.23
134244	912795P54	740	TREASURY BILLS	4/2/2009	10/1/2009		0.410%	0.411%	15,628,000	15,595,606.63	32,393.37	15,628,000.00	0.00
134448	912795P54	740	TREASURY BILLS	4/14/2009	10/1/2009		0.315%	0.315%	15,670,000	15,646,690.88	23,309.12	15,670,000.00	0.00
137080	912795P54	740	TREASURY BILLS	9/17/2009	10/1/2009		0.030%	0.030%	12,269,000	12,268,856.86	143.14	12,269,000.00	0.00
137200	313313MK1	740	FFCB D N	9/25/2009	10/1/2009		0.030%	0.030%	4,950,000	4,949,975.25	24.75	4,950,000.00	0.00
131961	313385MK9	740	FHLB D N	11/20/2008	10/1/2009		1.980%	2.015%	50,000,000	49,133,750.00	866,250.00	50,000,000.00	0.00
131962	313385MK9	740	FHLB D N	11/20/2008	10/1/2009		1.980%	2.015%	880,000	880,000.00	15,246.00	880,000.00	0.00
134945	313385MK9	740	FHLB D N	5/14/2009	10/1/2009		0.220%	0.220%	12,117,000	12,106,633.23	10,366.77	12,117,000.00	0.00
134954	313385MK9	740	FHLB D N	5/15/2009	10/1/2009		0.240%	0.240%	13,000,000	12,987,953.33	12,046.67	13,000,000.00	0.00
137304	313385MK9	740	FHLB D N	9/30/2009	10/1/2009		0.001%	0.001%	12,614,000	12,613,999.65	0.35	12,614,000.00	0.00
135612	313397MK4	740	FHLMC D N	6/18/2009	10/1/2009		0.180%	0.180%	12,353,000	12,346,514.68	6,485.32	12,353,000.00	0.00
137199	313397MK4	740	FHLMC D N	9/25/2009	10/1/2009		0.070%	0.070%	1,100,000	1,099,987.17	12.83	1,100,000.00	0.00
136076	313589MK6	740	FNMA D N	7/16/2009	10/1/2009		0.200%	0.200%	12,351,000	12,345,716.52	5,283.48	12,351,000.00	0.00
136629	313589MK6	740	FNMA D N	8/20/2009	10/1/2009		0.120%	0.120%	12,348,000	12,346,271.28	1,728.72	12,348,000.00	0.00
137198	313589MK6	740	FNMA D N	9/25/2009	10/1/2009		0.040%	0.040%	6,555,000	6,554,956.30	43.70	6,555,000.00	0.00
740 Total									181,835,000	180,861,665.78	973,334.22	181,835,000.00	0.00
135678	3128X8W57	741	FHLMC C I	6/23/2009	12/22/2011	12/22/2009	2.000%	1.983%	6,000,000	6,002,733.33	33,000.00	6,020,625.00	18,225.00
132937	3128X8EL2	741	FHLMC C I	1/20/2009	1/20/2012	1/20/2011	2.200%	2.200%	5,000,000	5,000,000.00	21,694.44	5,079,687.50	79,687.50
134507	3128X8VR0	741	FHLMC C I	4/20/2009	4/20/2012	4/20/2010	2.200%	2.217%	5,000,000	4,997,500.00	49,194.44	5,046,875.00	49,375.00
134897	3128X8A93	741	FHLMC C I	5/11/2009	5/11/2012	5/11/2010	2.050%	2.085%	2,700,000	2,697,300.00	21,525.00	2,711,812.50	14,125.50
134395	3128X8TZ5	741	FHLMC C I	4/13/2009	4/8/2013	4/8/2011	2.500%	2.526%	2,000,000	1,998,694.44	24,027.77	2,015,000.00	17,000.00
135767	3128X82Y7	741	FHLMC C I	6/30/2009	9/25/2013	6/25/2010	3.020%	3.020%	3,500,000	3,500,000.00	1,761.67	3,540,468.75	40,468.75
137175	3128X9EW6	741	FHLMC C I	9/24/2009	9/24/2014	12/24/2009	3.250%	3.266%	6,200,000	6,195,350.00	3,918.06	6,200,000.00	4,650.00
137305	3128X9HL7	741	FHLMC C I	9/30/2009	9/30/2014	12/30/2009	3.100%	3.100%	2,800,000	2,800,000.00	241.11	2,801,750.00	1,750.00
135675	3133XTR40	741	FHLB C I	6/23/2009	6/11/2012	10/19/2009	1.850%	2.151%	1,500,000	1,488,025.00	8,479.17	1,500,468.75	13,368.75
136055	3133XU3J5	741	FHLB C I	7/15/2009	7/15/2013	10/15/2009	2.750%	2.750%	5,000,000	5,000,000.00	29,027.78	5,004,687.50	4,687.50
136077	3133XU4M2	741	FHLB C I	7/16/2009	7/16/2013	10/16/2009	2.650%	2.663%	3,700,000	3,698,150.00	20,427.08	3,703,468.75	5,318.75
135768	3133XSXW3	741	FHLB C I	6/30/2009	2/13/2014	11/13/2009	3.200%	3.200%	1,000,000	1,000,000.00	4,266.67	1,003,437.50	3,437.50
134947	313385MK9	741	FHLB D N	5/14/2009	10/1/2009		0.220%	0.221%	1,000	999.14	0.86	1,000.00	0.00
134006	313385SA5	741	FHLB D N	3/24/2009	1/20/2010		0.680%	0.684%	453,000	450,415.89	1,634.32	452,930.16	879.95
137173	313385F84	741	FHLB D N	9/24/2009	9/15/2010		0.400%	0.402%	262,000	260,963.64	20.38	261,263.13	279.11
136952	313397SA0	741	FHLMC D N	9/8/2009	1/20/2010		0.200%	0.200%	32,000	31,976.18	4.09	31,995.07	14.80
137306	313397SA0	741	FHLMC D N	9/30/2009	1/20/2010		0.140%	0.140%	236,000	235,897.21	0.92	235,963.62	65.49
134508	31331GTK5	741	FFCB C I	4/20/2009	4/20/2012	4/20/2010	2.020%	2.020%	5,000,000	5,000,000.00	45,169.44	5,031,250.00	31,250.00

MIAMI-DADE COUNTY
REPORT WRITER
AS OF DATE: September 30, 2009
SORTING ORDER: FUND ICC#

INVSMT NUMBER	CUSIP NUMBER	FUND NUMBER	DESCRIPTION	PURCHASE SET DATE	MATURITY DATE	CALL DATE	INTEREST RATE	YTM TRADING	SCHEDULED PAR VALUE	CURRENT BOOK VALUE	PERIOD-END INTEREST ACCRL	MARKET VALUE	UNREALIZED GAIN/LOSS
134509	31331GTK5	741	FFCB C I	4/20/2009	4/20/2012	4/20/2010	2.020%	2.020%	5,000,000	5,000,000.00	45,169.44	5,031,250.00	31,250.00
136078	31331GC23	741	FFCB C I	7/16/2009	7/16/2013	7/16/2010	2.450%	2.450%	1,480,000	1,480,000.00	7,554.17	1,481,387.50	1,387.50
137081	31331GR35	741	FFCB C I	9/17/2009	9/16/2013	12/16/2009	2.690%	2.770%	2,000,000	1,994,149.44	2,241.66	2,001,875.00	7,875.00
137174	31331GT74	741	FFCB C I	9/24/2009	9/24/2013	12/24/2009	2.800%	2.827%	10,800,000	10,789,200.00	5,880.00	10,827,000.00	37,800.00
135680	31331GYG8	741	FFCB C I	6/23/2009	12/23/2013	10/9/2009	3.000%	3.168%	3,000,000	2,979,000.00	24,500.00	3,000,937.50	21,937.50
135769	31331GYG8	741	FFCB C I	6/30/2009	12/23/2013	10/9/2009	3.000%	3.000%	4,075,000	4,077,377.08	33,279.16	4,076,273.44	1,273.44
136107	31331GJW0	741	FFCB C I	7/14/2009	1/13/2014	1/13/2010	3.050%	3.050%	500,000	500,042.36	3,304.17	502,031.25	2,031.25
135040	31331GWJ4	741	FFCB C I	5/19/2009	5/19/2014	5/19/2011	2.840%	2.840%	1,000,000	1,000,000.00	10,413.33	1,001,562.50	1,562.50
137079	31331GR43	741	FFCB C I	9/17/2009	9/15/2014	9/15/2014	3.170%	3.170%	3,000,000	3,000,528.33	4,226.66	2,992,500.00	(7,500.00)
137151	31331GR43	741	FFCB C I	9/23/2009	9/15/2014	9/15/2014	3.170%	3.203%	10,000,000	9,992,044.44	14,088.88	9,975,000.00	(10,000.00)
137133	31331GS42	741	FFCB C I	9/22/2009	9/22/2014	9/22/2011	3.000%	3.005%	6,100,000	6,098,475.00	4,575.00	6,107,625.00	9,150.00
132346	31331GGS2	741	FFCB - BULLET	12/12/2008	6/11/2010		2.000%	2.000%	6,000,000	6,000,000.00	36,666.67	6,061,875.00	61,875.00
133236	31331GKY4	741	FFCB - BULLET	2/5/2009	1/17/2012		2.000%	2.220%	4,000,000	3,978,773.38	16,444.44	4,053,750.00	74,976.62
135679	31331GYP8	741	FFCB - BULLET	6/23/2009	6/18/2012		2.125%	2.160%	3,000,000	2,997,860.13	18,239.59	3,030,000.00	33,025.29
134879	31331GVD8	741	FFCB - BULLET	5/8/2009	4/8/2013		2.200%	2.251%	7,000,000	6,986,700.00	61,172.22	7,019,687.50	32,987.50
135028	31398APK2	741	FNMA - BULLET	3/11/2008	3/5/2010		3.050%	3.050%	2,130,000	2,130,000.00	4,691.92	2,153,962.50	23,962.50
133373	3136FHAQ8	741	FNMA STEP UP	2/17/2009	2/17/2010	2/17/2010	2.000%	2.000%	2,100,000	2,100,000.00	5,133.33	2,110,500.00	10,500.00
		741 Total							121,569,000	121,462,154.99	561,973.84	122,069,900.42	619,064.70
136576	313313UP1	742	FFCB D N	8/17/2009	3/22/2010		0.300%	0.301%	51,000	50,907.78	19.12	50,970.76	43.86
		742 Total							51,000	50,907.78	19.12	50,970.76	43.86
137452	825252869	756	AIM MONEY MARKET - D	9/8/2009	10/1/2009		0.049%	0.049%	45	45.21	0.00	45.21	0.00
137454	825252869	756	AIM MONEY MARKET - D	9/1/2009	10/1/2009		0.049%	0.049%	55,800	55,800.00	2.30	55,800.00	0.00
137455	825252869	756	AIM MONEY MARKET - D	9/28/2009	10/1/2009		0.049%	0.049%	500,100	500,100.00	2.06	500,100.00	0.00
136707	313313SZ2	756	FFCB D N	8/28/2009	2/12/2010		0.230%	0.230%	600,600	599,955.36	130.46	600,376.44	290.62
		756 Total							1,156,545	1,155,900.57	134.82	1,156,321.65	290.62
137083	912795P54	760	TREASURY BILLS	9/17/2009	10/1/2009		0.030%	0.030%	8,200,000	8,199,904.33	95.67	8,200,000.00	0.00
137309	3128X9FU9	760	FHLMC C I	9/30/2009	12/30/2011	12/31/2009	1.300%	1.300%	2,000,000	2,000,000.00	72.22	2,001,875.00	1,875.00
134167	313313MR6	760	FFCB D N	3/31/2009	10/7/2009		0.500%	0.501%	200,000	199,472.22	511.11	199,999.00	15.67
135189	313313PJ1	760	FFCB D N	5/28/2009	11/17/2009		0.320%	0.320%	600,000	599,077.33	672.00	599,976.50	227.17
135186	313313PR3	760	FFCB D N	5/28/2009	11/24/2009		0.300%	0.300%	4,500,000	4,493,250.00	4,725.00	4,499,797.50	1,822.50
135188	313313PR3	760	FFCB D N	5/28/2009	11/24/2009		0.350%	0.351%	500,000	499,125.00	612.50	499,977.50	240.00
136708	313313SZ2	760	FFCB D N	8/28/2009	2/12/2010		0.230%	0.230%	437,000	436,530.95	94.93	436,837.34	211.46
135518	313313UX4	760	FFCB D N	6/11/2009	3/30/2010		0.430%	0.432%	650,000	647,732.94	869.56	649,447.50	845.00
136705	313313XF0	760	FFCB D N	8/28/2009	5/25/2010		0.350%	0.351%	770,000	767,978.75	254.53	769,141.88	908.60
135517	313385ML7	760	FHLB D N	6/11/2009	10/2/2009		0.220%	0.220%	2,620,000	2,618,190.74	1,793.25	2,619,997.82	13.83
134300	313385MQ6	760	FHLB D N	4/3/2009	10/6/2009		0.480%	0.481%	826,000	823,951.52	1,993.41	825,996.56	51.63
132914	313385MT0	760	FHLB D N	1/15/2009	10/9/2009		0.580%	0.583%	4,017,000	3,999,720.21	16,762.04	4,016,973.22	490.97
134486	313385MT0	760	FHLB D N	4/16/2009	10/9/2009		0.420%	0.421%	449,000	448,078.05	880.04	448,997.01	38.92
136000	313385MT0	760	FHLB D N	7/9/2009	10/9/2009		0.200%	0.200%	3,852,000	3,850,031.20	1,797.60	3,851,974.32	145.52
135504	313385MX1	760	FHLB D N	6/10/2009	10/13/2009		0.230%	0.230%	3,001,000	2,998,603.37	2,166.55	3,000,969.99	200.07
135520	313385MX1	760	FHLB D N	6/11/2009	10/13/2009		0.230%	0.230%	3,012,000	3,009,613.83	2,155.25	3,011,969.88	200.80
136196	313385MY9	760	FHLB D N	7/28/2009	10/14/2009		0.210%	0.210%	590,000	589,731.55	223.71	589,993.61	38.35
132899	313385M26	760	FHLB D N	1/15/2009	10/15/2009		0.550%	0.552%	5,000,000	4,979,145.83	19,784.73	4,999,941.67	1,011.11
135175	313385PS9	760	FHLB D N	5/28/2009	11/25/2009		0.305%	0.305%	10,000,000	9,984,665.28	10,675.00	9,999,541.67	4,201.39
137270	313385XN1	760	FHLB D N	9/29/2009	6/1/2010		0.350%	0.351%	440,000	438,951.94	8.56	439,376.30	415.80
135700	313385YM2	760	FHLB D N	6/25/2009	6/24/2010		0.560%	0.563%	5,000,000	4,971,688.89	7,622.22	4,992,241.67	12,930.56
137201	313385F92	760	FHLB D N	9/25/2009	9/16/2010		0.400%	0.402%	2,000,000	1,992,088.89	133.33	1,994,375.00	2,152.78
137223	313385F92	760	FHLB D N	9/28/2009	9/16/2010		0.400%	0.402%	843,000	839,693.57	28.10	840,629.06	907.39
137272	313385F92	760	FHLB D N	9/29/2009	9/16/2010		0.400%	0.402%	1,266,000	1,261,048.53	28.13	1,262,439.38	1,362.72
136573	313397MK4	760	FHLMC D N	8/17/2009	10/1/2009		0.160%	0.160%	1,000,200	999,999.96	200.04	1,000,200.00	0.00
135103	313397MP3	760	FHLMC D N	5/21/2009	10/5/2009		0.230%	0.230%	8,030,000	8,022,971.52	6,823.27	8,029,973.23	178.44
135699	313397MP3	760	FHLMC D N	6/25/2009	10/5/2009		0.240%	0.240%	6,000,000	5,995,920.00	3,920.00	5,999,980.00	140.00
135730	313397MP3	760	FHLMC D N	6/29/2009	10/5/2009		0.250%	0.250%	1,343,000	1,342,086.01	876.68	1,342,995.52	32.83
135256	313397MR9	760	FHLMC D N	6/2/2009	10/7/2009		0.235%	0.235%	2,343,000	2,341,057.59	1,850.64	2,342,988.29	80.06
137109	313397MR9	760	FHLMC D N	9/18/2009	10/7/2009		0.100%	0.100%	460,000	459,975.72	16.61	459,997.70	5.37
134960	313397MX6	760	FHLMC D N	5/15/2009	10/13/2009		0.240%	0.240%	2,799,000	2,796,182.34	2,593.74	2,798,972.01	195.93

MIAMI-DADE COUNTY
REPORT WRITER
AS OF DATE: September 30, 2009
SORTING ORDER: FUND ICC#

INVSMT NUMBER	CUSIP NUMBER	FUND NUMBER	DESCRIPTION	PURCHASE SET DATE	MATURITY DATE	CALL DATE	INTEREST RATE	YTM TRADING	SCHEDULED PAR VALUE	CURRENT BOOK VALUE	PERIOD-END INTEREST ACCRL	MARKET VALUE	UNREALIZED GAIN/LOSS
135077	313397MX6	760	FHLMC D N	5/20/2009	10/13/2009		0.240%	0.240%	10,000,000	9,990,266.67	8,933.33	9,999,900.00	700.00
135828	313397MX6	760	FHLMC D N	7/6/2009	10/13/2009		0.190%	0.190%	2,193,000	2,191,854.16	1,006.95	2,192,978.07	116.96
136118	313397MX6	760	FHLMC D N	7/20/2009	10/13/2009		0.205%	0.205%	2,684,000	2,682,700.87	1,115.72	2,683,973.16	156.57
135622	313397MZ1	760	FHLMC D N	6/19/2009	10/15/2009		0.220%	0.220%	6,000,000	5,995,673.33	3,813.34	5,999,930.00	443.33
135670	313397MZ1	760	FHLMC D N	6/23/2009	10/15/2009		0.220%	0.220%	5,284,000	5,280,318.81	3,229.11	5,283,938.35	390.43
134662	313397QE4	760	FHLMC D N	4/30/2009	12/7/2009		0.400%	0.401%	2,103,000	2,097,835.97	3,598.46	2,102,843.44	1,409.01
135507	313397TK7	760	FHLMC D N	6/10/2009	2/22/2010		0.400%	0.401%	28,000	27,920.04	35.16	27,988.80	33.60
137313	313397WA5	760	FHLMC D N	9/30/2009	4/26/2010		0.210%	0.210%	12,900	12,884.35	0.08	12,888.87	4.44
136223	313397ZK0	760	FHLMC D N	7/30/2009	7/16/2010		0.520%	0.523%	262,000	260,671.66	238.42	261,508.75	598.67
137319	31331GS59	760	FFCB C I	9/30/2009	9/23/2011	12/23/2009	1.200%	1.277%	2,000,000	1,997,466.67	533.34	1,991,250.00	(5,750.00)
135701	31331GZA0	760	FFCB C I	6/25/2009	6/25/2012	6/25/2010	2.250%	2.250%	4,000,000	4,000,000.00	24,000.00	4,022,500.00	22,500.00
132949	313589MK6	760	FNMA D N	1/20/2009	10/1/2009		0.600%	0.603%	1,000,000	995,766.67	4,233.33	1,000,000.00	0.00
134180	313589MK6	760	FNMA D N	3/31/2009	10/1/2009		0.600%	0.602%	500,000	498,466.67	1,533.33	500,000.00	0.00
135076	313589MK6	760	FNMA D N	5/20/2009	10/1/2009		0.250%	0.250%	2,621,000	2,618,561.01	2,438.99	2,621,000.00	0.00
137082	313589MK6	760	FNMA D N	9/17/2009	10/1/2009		0.070%	0.070%	3,100,000	3,099,915.61	84.39	3,100,000.00	0.00
137116	313589MP5	760	FNMA D N	9/21/2009	10/5/2009		0.100%	0.100%	2,000,000	1,999,922.22	55.56	1,999,933.33	15.55
135771	313589MQ3	760	FNMA D N	6/30/2009	10/6/2009		0.210%	0.210%	7,740,000	7,735,575.30	4,198.95	7,739,967.75	193.50
134118	313589MR1	760	FNMA D N	3/30/2009	10/7/2009		0.450%	0.451%	2,005,000	2,000,213.06	4,636.56	2,004,989.98	140.36
134356	313589MR1	760	FNMA D N	4/8/2009	10/7/2009		0.410%	0.411%	3,697,000	3,689,336.94	7,410.43	3,696,981.52	234.15
134664	313589MR1	760	FNMA D N	4/30/2009	10/7/2009		0.300%	0.300%	1,000,000	998,666.67	1,283.33	999,995.00	45.00
136195	313589MR1	760	FNMA D N	7/28/2009	10/7/2009		0.250%	0.250%	1,500,000	1,499,260.42	677.08	1,499,992.50	55.00
132958	313589MX8	760	FNMA D N	1/20/2009	10/13/2009		0.580%	0.582%	2,500,000	2,489,286.11	10,230.56	2,499,975.00	458.33
133241	313589MX8	760	FNMA D N	2/5/2009	10/13/2009		0.700%	0.703%	1,500,000	1,492,708.33	6,941.67	1,499,985.00	335.00
135698	313589MY6	760	FNMA D N	6/25/2009	10/14/2009		0.250%	0.250%	5,000,000	4,996,145.83	3,402.78	4,999,945.83	397.22
135060	313589PH0	760	FNMA D N	5/19/2009	11/16/2009		0.300%	0.300%	2,000,000	1,996,983.33	2,250.00	1,999,923.33	690.00
137218	313589ZG1	760	FNMA D N	9/25/2009	7/15/2010		0.320%	0.319%	1,000,000	997,413.33	52.97	998,125.00	658.70
137215	313589A45	760	FNMA D N	9/25/2009	8/2/2010		0.300%	0.301%	1,056,400	1,053,662.16	52.82	1,054,089.13	374.15
137212	313589A45	760	FNMA D N	9/25/2009	9/1/2010		0.390%	0.391%	3,000,000	2,988,917.50	195.00	2,993,437.50	4,325.00
130260	31331Y6H8	760	FFCB - BULLET	8/18/2008	2/18/2010		3.150%	3.150%	2,000,000	2,000,000.00	7,525.00	2,021,875.00	21,875.00
129484	31331Y2P4	760	FFCB - BULLET	7/7/2008	7/7/2010		3.300%	3.300%	4,000,000	4,000,000.00	30,800.00	4,087,500.00	87,500.00
127744	3133XQN65	760	FHLB BULLET	4/7/2008	10/7/2009		2.600%	2.603%	5,000,000	4,999,916.97	62,833.33	5,001,562.50	1,645.53
127212	31398APK2	760	FNMA BULLET	3/10/2008	3/5/2010		3.050%	3.050%	6,000,000	6,000,000.00	13,216.67	6,067,500.00	67,500.00
127272	31398APK2	760	FNMA BULLET	3/12/2008	3/5/2010		3.050%	3.050%	9,000,000	9,000,000.00	19,825.00	9,101,250.00	101,250.00
136697	3136FJAP6	760	FNMA STEP UP	8/27/2009	8/27/2010	8/27/2010	1.000%	1.050%	1,000,000	999,500.00	944.44	1,001,562.50	2,062.50
136197	3133XU5F6	760	FHLB STEP UP	7/28/2009	1/27/2010		0.500%	0.500%	5,000,000	5,000,069.44	4,444.44	5,004,687.50	4,687.50
136713	3133XU5F6	760	FHLB STEP UP	8/28/2009	1/27/2010		0.500%	0.500%	5,580,000	5,582,402.50	4,960.00	5,585,231.25	5,231.25
		760 Total							196,114,500	195,876,750.66	330,970.96	196,386,845.19	351,216.62
137463	825252869	778	AIM MONEY MARKET - D	9/1/2009	10/1/2009		0.049%	0.049%	1,819,800	1,819,800.00	74.94	1,819,800.00	0.00
135624	313313PJ1	778	FFCB D N	6/19/2009	11/17/2009		0.270%	0.270%	1,000,000	998,867.50	780.00	999,960.83	313.33
134622	313385NQ5	778	FHLB D N	4/28/2009	10/30/2009		0.330%	0.331%	443,000	442,248.75	633.49	442,989.29	107.05
		778 Total							3,262,800	3,260,916.25	1,488.43	3,262,750.12	420.38
137466	825252869	779	AIM MONEY MARKET - D	9/22/2009	10/1/2009		0.045%	0.045%	999,100	999,100.00	11.20	999,100.00	0.00
137471	825252869	779	AIM MONEY MARKET - D	9/1/2009	10/1/2009		0.045%	0.045%	1,961,834	1,961,834.36	73.32	1,961,834.36	0.00
135187	313313PR3	779	FFCB D N	5/28/2009	11/24/2009		0.300%	0.300%	3,165,000	3,160,252.50	3,323.25	3,164,857.58	1,281.83
136254	313313PY8	779	FFCB D N	8/3/2009	12/1/2009		0.240%	0.240%	1,500,000	1,498,800.00	590.00	1,499,898.33	508.33
136709	313313SZ2	779	FFCB D N	8/28/2009	2/12/2010		0.230%	0.230%	597,000	596,359.22	129.68	596,777.78	288.88
135732	313385QP4	779	FHLB D N	6/29/2009	12/16/2009		0.310%	0.310%	1,579,000	1,576,688.52	1,278.11	1,578,866.66	900.03
134532	313385RK4	779	FHLB D N	4/21/2009	1/5/2010		0.550%	0.552%	393,000	391,444.92	978.68	392,947.60	524.00
137227	313385SN7	779	FHLB D N	9/28/2009	2/1/2010		0.200%	0.200%	1,000,000	999,300.00	16.67	999,658.33	341.66
134312	313385SV9	779	FHLB D N	4/6/2009	2/8/2010		0.800%	0.806%	500,000	496,577.78	1,977.78	499,819.44	1,263.88
137204	313385WA0	779	FHLB D N	9/25/2009	4/26/2010		0.230%	0.230%	2,500,000	2,496,597.92	95.83	2,497,843.75	1,150.00
137225	313385YU4	779	FHLB D N	9/28/2009	7/1/2010		0.350%	0.351%	615,000	613,349.75	17.94	614,039.06	671.37
137224	313385F92	779	FHLB D N	9/28/2009	9/16/2010		0.400%	0.402%	1,157,000	1,152,461.99	38.57	1,153,745.94	1,245.38
136574	313397MK4	779	FHLMC D N	9/28/2009	8/17/2009		0.160%	0.160%	500,000	499,900.00	100.00	500,000.00	0.00
135104	313397MP3	779	FHLMC D N	5/21/2009	10/5/2009		0.230%	0.230%	1,970,000	1,968,275.70	1,673.96	1,969,993.43	43.77
137210	313397MX6	779	FHLMC D N	9/25/2009	10/13/2009		0.100%	0.100%	2,135,000	2,134,893.25	35.58	2,134,978.65	49.82

MIAMI-DADE COUNTY
REPORT WRITER
AS OF DATE: September 30, 2009
SORTING ORDER: FUND ICC#

INVSMT NUMBER	CUSIP NUMBER	FUND NUMBER	DESCRIPTION	PURCHASE SET DATE	MATURITY DATE	CALL DATE	INTEREST RATE	YTM TRADING	SCHEDULED PAR VALUE	CURRENT BOOK VALUE	PERIOD-END INTEREST ACCRL	MARKET VALUE	UNREALIZED GAIN/LOSS
135524	313397ND9	779	FHLMC D N	6/11/2009	10/19/2009		0.250%	0.250%	1,445,000	1,443,695.49	1,123.89	1,444,978.33	158.95
135018	313397PA3	779	FHLMC D N	5/18/2009	11/9/2009		0.315%	0.315%	1,772,700	1,769,985.55	2,109.52	1,772,642.39	547.32
135522	313397RJ2	779	FHLMC D N	6/11/2009	1/4/2010		0.400%	0.401%	704,500	702,879.65	876.71	704,407.05	650.69
135057	313397SV4	779	FHLMC D N	5/19/2009	2/8/2010		0.420%	0.421%	2,000,000	1,993,816.67	3,150.00	1,999,277.78	2,311.11
136711	313397TD3	779	FHLMC D N	8/28/2009	2/16/2010		0.260%	0.260%	990,900	989,669.08	243.32	990,520.16	607.76
135508	313397TK7	779	FHLMC D N	6/10/2009	2/22/2010		0.400%	0.401%	812,000	809,681.29	1,019.51	811,675.20	974.40
135673	313397TL5	779	FHLMC D N	6/23/2009	2/23/2010		0.400%	0.401%	501,000	499,636.17	556.67	500,798.21	605.37
137209	313397TL5	779	FHLMC D N	9/25/2009	2/23/2010		0.180%	0.180%	2,000,000	1,998,490.00	60.00	1,999,194.44	644.44
137314	313397WA5	779	FHLMC D N	9/30/2009	4/26/2010		0.210%	0.210%	79,600	79,503.42	0.46	79,531.35	27.47
137311	31331GS59	779	FFCB C I	9/30/2009	9/23/2011	12/23/2009	1.200%	1.277%	1,400,000	1,398,226.67	373.34	1,393,875.00	(4,025.00)
137217	313589NN9	779	FNMA D N	9/25/2009	10/28/2009		0.090%	0.090%	2,300,000	2,299,810.25	34.50	2,299,948.25	103.50
134535	313589PE7	779	FNMA D N	4/21/2009	11/13/2009		0.500%	0.501%	651,000	649,137.42	1,473.79	650,976.67	365.46
135061	313589PH0	779	FNMA D N	5/19/2009	11/16/2009		0.300%	0.300%	2,000,000	1,996,983.33	2,250.00	1,999,923.33	690.00
134552	313589QE6	779	FNMA D N	4/22/2009	12/7/2009		0.450%	0.451%	602,000	600,276.78	1,219.05	601,955.18	459.35
137214	313589UJ0	779	FNMA D N	9/25/2009	3/17/2010		0.200%	0.200%	1,616,400	1,614,846.46	53.88	1,615,500.20	599.86
137229	313589UR2	779	FNMA D N	9/28/2009	3/24/2010		0.210%	0.210%	2,400,000	2,397,522.00	42.00	2,398,608.00	1,044.00
136712	313589VL4	779	FNMA D N	8/28/2009	4/12/2010		0.300%	0.301%	2,000,000	1,996,216.67	566.67	1,998,391.67	1,608.33
137216	313589A45	779	FNMA D N	9/25/2009	8/2/2010		0.300%	0.301%	943,600	941,154.50	47.18	941,535.88	334.20
136695	3136FJAP6	779	FNMA STEP UP	8/27/2009	8/27/2010	8/27/2010	1.000%	1.050%	1,000,000	999,500.00	944.44	1,001,562.50	2,062.50
136126	3133XU4F7	779	FHLB STEP UP	7/20/2009	1/20/2010		0.750%	0.750%	1,000,000	1,000,000.00	1,479.17	1,000,312.50	312.50
136714	3133XU5F6	779	FHLB STEP UP	8/28/2009	1/27/2010		0.500%	0.500%	1,000,000	1,000,430.56	888.89	1,000,937.50	937.50
		779 Total							47,790,634	47,727,297.87	28,853.56	47,770,912.50	19,288.66
137473	825252869	796	AIM MONEY MARKET - D	9/1/2009	10/1/2009		0.050%	0.049%	64,500	64,500.00	2.66	64,500.00	0.00
137474	825252869	796	AIM MONEY MARKET - D	9/8/2009	10/1/2009		0.050%	0.049%	14	13.86	0.00	13.86	0.00
		796 Total							64,514	64,513.86	2.66	64,513.86	0.00
137476	825252869	1010	AIM MONEY MARKET - D	9/10/2009	10/1/2009		0.049%	0.049%	900	900.00	0.03	900.00	0.00
137478	825252869	1010	AIM MONEY MARKET - D	9/8/2009	10/1/2009		0.049%	0.049%	26	26.45	0.00	26.45	0.00
137479	825252869	1010	AIM MONEY MARKET - D	9/11/2009	10/1/2009		0.049%	0.049%	30	29.50	0.00	29.50	0.00
137481	825252869	1010	AIM MONEY MARKET - D	9/1/2009	10/1/2009		0.049%	0.049%	10,197,700	10,197,700.00	419.93	10,197,700.00	0.00
		1010 Total							10,198,656	10,198,655.95	419.96	10,198,655.95	0.00
137483	316175108	1022	FIDELITY GOVT FUND -	9/1/2009	10/1/2009		0.141%	0.141%	103,359	103,359.42	12.17	103,359.42	0.00
		1022 Total							103,359	103,359.42	12.17	103,359.42	0.00
137490	316175108	1032	FIDELITY GOVT FUND -	9/1/2009	10/1/2009		0.148%	0.148%	1,453,925	1,453,925.00	178.97	1,453,925.00	0.00
137491	316175108	1032	FIDELITY GOVT FUND -	9/28/2009	10/1/2009		0.148%	0.148%	1,012,500	1,012,500.00	12.46	1,012,500.00	0.00
		1032 Total							2,466,425	2,466,425.00	191.43	2,466,425.00	0.00
137496	825252869	1033	AIM MONEY MARKET - D	9/16/2009	10/1/2009		0.021%	0.021%	1,200	1,200.00	0.01	1,200.00	0.00
134888	313385ML7	1033	FHLB D N	5/11/2009	10/2/2009		0.270%	0.270%	9,541,000	9,530,695.72	10,232.72	9,540,992.05	63.61
134968	313385ML7	1033	FHLB D N	5/15/2009	10/2/2009		0.240%	0.240%	1,213,340	1,212,207.55	1,214.36	1,213,338.99	7.08
134892	313385UZ7	1033	FHLB D N	5/11/2009	4/1/2010		0.570%	0.573%	10,000,000	9,948,541.67	22,641.67	9,992,416.67	21,233.33
134890	313589UZ4	1033	FNMA D N	5/11/2009	4/1/2010		0.560%	0.563%	688,000	684,521.78	1,530.42	687,478.27	1,426.07
		1033 Total							21,443,540	21,377,166.72	35,529.18	21,435,425.98	22,730.09
137554	316175108	1034	FIDELITY GOVT FUND -	9/16/2009	10/1/2009		0.122%	0.121%	16,400	16,400.00	0.83	16,400.00	0.00
		1034 Total							16,400	16,400.00	0.83	16,400.00	0.00
137507	316175108	1036	FIDELITY GOVT FUND -	9/1/2009	10/1/2009		0.159%	0.159%	952	952.47	0.13	952.47	0.00
		1036 Total							952	952.47	0.13	952.47	0.00
134969	313385ML7	1037	FHLB D N	5/15/2009	10/2/2009		0.240%	0.240%	581,100	580,557.64	538.49	581,099.52	3.39
134893	313385UZ7	1037	FHLB D N	5/11/2009	4/1/2010		0.570%	0.573%	5,000,000	4,974,270.83	11,320.83	4,996,208.33	10,616.67
134889	313589ML4	1037	FNMA D N	5/11/2009	10/2/2009		0.270%	0.270%	5,000,000	4,994,600.00	5,362.50	4,999,995.83	33.33
134891	313589UZ4	1037	FNMA D N	5/11/2009	4/1/2010		0.560%	0.563%	546,000	543,239.67	1,214.55	545,585.95	1,131.73
		1037 Total							11,127,100	11,092,668.14	18,436.37	11,122,889.63	11,785.12
137511	316175108	1038	FIDELITY GOVT FUND -	9/16/2009	10/1/2009		0.143%	0.143%	426,800	426,800.00	25.35	426,800.00	0.00
137516	316175108	1038	FIDELITY GOVT FUND -	9/28/2009	10/1/2009		0.143%	0.143%	4,451,600	4,451,600.00	52.89	4,451,600.00	0.00
137518	316175108	1038	FIDELITY GOVT FUND -	9/1/2009	10/1/2009		0.143%	0.143%	1,906,816	1,906,816.05	226.55	1,906,816.05	0.00
		1038 Total							6,785,216	6,785,216.05	304.79	6,785,216.05	0.00
137527	316175108	1039	FIDELITY GOVT FUND -	9/16/2009	10/1/2009		0.150%	0.150%	752,800	752,800.00	47.06	752,800.00	0.00
137530	316175108	1039	FIDELITY GOVT FUND -	9/11/2009	10/1/2009		0.150%	0.150%	498,604	498,603.67	41.56	498,603.67	0.00

MIAMI-DADE COUNTY
REPORT WRITER
AS OF DATE: September 30, 2009
SORTING ORDER: FUND ICC#

INVSMT NUMBER	CUSIP NUMBER	FUND NUMBER	DESCRIPTION	PURCHASE SET DATE	MATURITY DATE	CALL DATE	INTEREST RATE	YTM TRADING	SCHEDULED PAR VALUE	CURRENT BOOK VALUE	PERIOD-END INTEREST ACCRL	MARKET VALUE	UNREALIZED GAIN/LOSS
137531	316175108	1039	FIDELITY GOVT FUND -	9/24/2009	10/1/2009		0.150%	0.150%	282,300	282,300.00	8.24	282,300.00	0.00
137532	316175108	1039	FIDELITY GOVT FUND -	9/28/2009	10/1/2009		0.150%	0.150%	8,535,700	8,535,700.00	106.72	8,535,700.00	0.00
137533	316175108	1039	FIDELITY GOVT FUND -	9/30/2009	10/1/2009		0.150%	0.150%	249,000	249,000.00	1.04	249,000.00	0.00
137038	313385MR4	1039	FHLB D N	9/16/2009	10/7/2009		0.090%	0.090%	5,000,000	4,999,737.50	187.50	4,999,975.00	50.00
		1039 Total							15,318,404	15,318,141.17	392.12	15,318,378.67	50.00
137550	825252869	1040	AIM MONEY MARKET - D	9/1/2009	10/1/2009		0.049%	0.049%	8,437,300	8,437,300.00	347.40	8,437,300.00	0.00
137540	316175108	1040	FIDELITY GOVT FUND -	9/9/2009	10/1/2009		0.140%	0.140%	20,000,000	20,000,000.00	1,706.77	20,000,000.00	0.00
137543	316175108	1040	FIDELITY GOVT FUND -	9/1/2009	10/1/2009		0.140%	0.140%	31,709,480	31,709,480.28	3,690.06	31,709,480.28	0.00
137124	313397MR9	1040	FHLMC D N	9/18/2009	10/7/2009		0.100%	0.100%	1,008,400	1,008,346.78	36.41	1,008,394.96	11.77
		1040 Total							61,155,180	61,155,127.06	5,780.64	61,155,175.24	11.77
Grand Total									3,945,597,327	3,937,234,598.62	9,523,685.77	3,951,374,816.21	9,096,941.94