

MEMORANDUM

Agenda Item No. 8(H)(3)


TO: Honorable Chairman Jean Monestime
and Members, Board of County Commissioners

DATE: January 21, 2015

FROM: R. A. Cuevas, Jr.
County Attorney

SUBJECT: Resolution authorizing the conveyance of an easement to Florida Power and Light Company, for \$1.00, to install and maintain electric power facilities in Tropical Park, located at 7900 SW 40 Street, and authorizing the County Mayor to execute easement and exercise provisions contained therein

The accompanying resolution was prepared by the Parks, Recreation and Open Spaces Department and placed on the agenda at the request of Prime Sponsor Senator Javier D. Souto.



R. A. Cuevas, Jr.
County Attorney

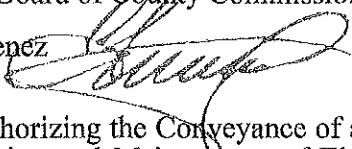
RAC/cp

Memorandum



Date: January 21, 2015

To: Honorable Chairman Jean Monestime
and Members, Board of County Commissioners

From: Carlos A. Gimenez 
Mayor

Subject: Resolution Authorizing the Conveyance of an Easement to Florida Power and Light Company for the Installation and Maintenance of Electrical Power Transmission Facilities at Tropical Park

Recommendation

It is recommended that the Board of County Commissioners adopt the attached resolution authorizing the conveyance of a 2,174 square foot easement to Florida Power and Light Company (FPL) for an electrical transformer and related equipment for the Equestrian Center at Tropical Park.

Scope

Tropical Park is located in County Commission District 10, Commissioner Javier D. Souto, at 7900 SW 40 Street (Bird Road); however, Tropical Park is a Countywide asset of regional significance.

Fiscal Impact/Funding Source


Approval of this resolution will have no fiscal impact to Miami-Dade County.

Track Record/Monitor

The Property Management Supervisor of the Miami-Dade Parks, Recreation and Open Spaces Department (MDPROS), John Bowers, will ensure completion of the easement document, its recording, and delivery to the Clerk of the Board.

Background

Additions to the Equestrian Center require additional electrical power. FPL will provide electrical power to the new addition in exchange for Miami-Dade County providing a 2,174 square foot easement (Attachment A) for an electrical transformer, power lines and related equipment. The easement is located to the east of the new complex, and is approximately 10-foot wide and 217 feet in length.



Michael Spring, Senior Advisor
Office of the Mayor

Attachments



MEMORANDUM

(Revised)

TO: Honorable Chairman Jean Monestime
and Members, Board of County Commissioners

DATE: January 21, 2015

FROM: 
R. A. Cuevas, Jr.
County Attorney

SUBJECT: Agenda Item No.8(H) (3)

Please note any items checked.

- "3-Day Rule" for committees applicable if raised
- 6 weeks required between first reading and public hearing
- 4 weeks notification to municipal officials required prior to public hearing
- Decreases revenues or increases expenditures without balancing budget
- Budget required
- Statement of fiscal impact required
- Ordinance creating a new board requires detailed County Mayor's report for public hearing
- No committee review
- Applicable legislation requires more than a majority vote (i.e., 2/3's _____, 3/5's _____, unanimous _____) to approve
- Current information regarding funding source, index code and available balance, and available capacity (if debt is contemplated) required

Approved _____ Mayor

Agenda Item No. 8(H) (3)

Veto _____

1-21-15

Override _____

RESOLUTION NO. _____

RESOLUTION AUTHORIZING THE CONVEYANCE OF AN EASEMENT TO FLORIDA POWER AND LIGHT COMPANY, FOR \$1.00, TO CONSTRUCT, OPERATE AND MAINTAIN ELECTRIC POWER FACILITIES IN TROPICAL PARK, LOCATED AT 7900 SW 40 STREET, AND AUTHORIZING THE COUNTY MAYOR OR THE COUNTY MAYOR'S DESIGNEE TO EXECUTE EASEMENT AND EXERCISE ALL RIGHTS CONTAINED THEREIN

WHEREAS, the County, through its Parks, Recreation and Open Spaces Department, has built an addition to the Equestrian Center in Tropical Park, located at 7900 SW 40 Street; and

WHEREAS, as part of the new addition, the County desires to use electric power facilities from the Florida Power and Light Company; and

WHEREAS, Florida Power and Light Company agrees to provide electric power facilities to the addition in exchange for an easement to allow access to construct, operate and maintain them, and said easement will not adversely impact natural resources, or the park facilities and uses; and

WHEREAS, this Board desires to accomplish the purposes outlined in the accompanying memorandum, a copy of which is incorporated herein by reference,

NOW, THEREFORE, BE IT RESOLVED BY THE BOARD OF COUNTY COMMISSIONERS OF MIAMI-DADE COUNTY, FLORIDA, that this Board hereby authorizes the conveyance of an easement to Florida Power and Light Company for \$1.00, for the construction, operation and maintenance of electric power facilities at the Equestrian Center in Tropical Park, in substantially the form attached hereto as "Attachment A" and made a part

hereof, and authorizes the County Mayor or County Mayor's designee to execute same for and on behalf of Miami-Dade County and to exercise all rights conferred therein.

The foregoing resolution was offered by Commissioner who moved its adoption. The motion was seconded by Commissioner and upon being put to a vote, the vote was as follows:

- | | |
|-------------------------------------|----------------------|
| Jean Monestime, Chairman | |
| Esteban L. Bovo, Jr., Vice Chairman | |
| Bruno A. Barreiro | Daniella Levine Cava |
| Jose "Pepe" Diaz | Audrey M. Edmonson |
| Sally A. Heyman | Barbara J. Jordan |
| Dennis C. Moss | Rebeca Sosa |
| Sen. Javier D. Souto | Xavier L. Suarez |
| Juan C. Zapata | |

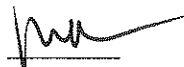
The Chairperson thereupon declared the resolution duly passed and adopted this 21st day of January, 2015. This resolution shall become effective upon the earlier of (1) 10 days after the date of its adoption unless vetoed by the County Mayor, and if vetoed, shall become effective only upon an override by this Board, or (2) approval by the County Mayor of this Resolution and the filing of this approval with the Clerk of the Board.

MIAMI-DADE COUNTY, FLORIDA
BY ITS BOARD OF
COUNTY COMMISSIONERS

HARVEY RUVIN, CLERK

By: _____
Deputy Clerk

Approved by County Attorney as
to form and legal sufficiency.



Monica Rizo

ATTACHMENT A

EASEMENT

Work Request No. _____

This Instrument Prepared By

Sec 22 Twp 54 Rge 40

Name: Randy Koper
Co. Name: Miami Dade County
PROS Dept.

Folio No.
30 4022 002 0010

Address: 275 NW 2nd Street
Suite #430
Miami, FL 33128

Reserved for Recording

The undersigned, in consideration of the payment of \$1.00 and other good and valuable consideration, the adequacy and receipt of which is hereby acknowledged, grant and give to Florida Power and Light Company, its licensees, agents, successors, and assigns, ("Grantee") an easement forever for the construction, operation and maintenance of underground electric utility facilities (including wires, poles, guys, cables, conduits and appurtenance equipment) to be installed from time to time; with the right to reconstruct, improve, add to, enlarge, change the voltage, as well as, the size of and remove such facilities or any of them located at Tropical Park, 7900 SW 40 Street, within the following described property:

See attached "Exhibit A"

Grantors Address:
Miami-Dade County
111 NW 1st Street
Miami, Florida 33128

Grantee Address:
Florida Power and Light Company
9250 West Flagler Street
Miami, Florida 33174

Together with the right of ingress and egress to said premises at all times; the right to clear the land and keep it cleared of all trees, undergrowth and other obstructions within the Easement Area; to trim and cut and keep trimmed and cut all dead, weak, leaning or dangerous trees or limbs outside of the Easement Area which might interfere with or fall upon the lines or systems of communications or power transmission or distribution; and further grants to the fullest extent the undersigned has the power to grant, if at all, the rights hereinabove granted on the land heretofore described, over, along, under and across said Easement Area. The County shall have the right and privilege to use the Easement Area in any manner that does not interfere with the rights, use and enjoyment granted hereunder to Grantee.

IN WITNESS WHEREOF, the undersigned has signed and sealed this instrument on _____, 20__.

IN WITNESS WHEREOF the said party of the first part has caused these presents to be executed in its name by its Board of County Commissioners acting by the Mayor of said Board, the day and year aforesaid.

(OFFICIAL SEAL.)

ATTEST:

HARVEY RUVIN, CLERK

MIAMI-DADE COUNTY, FLORIDA
BY ITS BOARD OF
COUNTY COMMISSIONERS

By: _____
Deputy Clerk

By: _____
Mayor

Approved as to Form and Sufficiency _____
Print Name _____

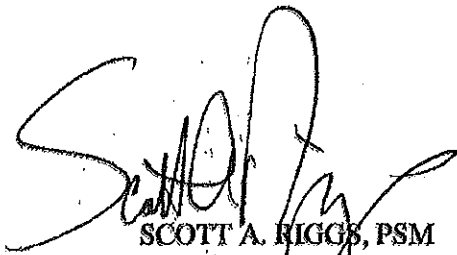
The foregoing was authorized and approved by Resolution, _____ of the Board of County Commissioners of Miami-Dade County, Florida, on the _____ day of _____, 20__.

**EXHIBIT "A",
10' UTILITY EASEMENT**

A parcel of land lying and being in Section 22, Township 54 South, Range 40 East of Miami-Dade County, Florida, being more particularly described as follows:

Commence at the Northeast corner of said Section 22, Township 54 South, Range 40 East ; thence S 0°35'04" E for a distance of 1402.11 feet to the Point of Beginning of the centerline of an Easement 10 feet wide with 5 feet to each side; thence N 71°54'24" W, along said centerline, for a distance of 48.69 feet; thence N 74°29'24" W, for a distance of 17.52 feet; thence S 85°10'34" W, for a distance of 44.69 feet; thence N 77°14'47" W, for a distance of 17.90 feet; thence S 02°38'29" E, for a distance of 39.03 feet to the Point of Terminus of the aforementioned centerline.

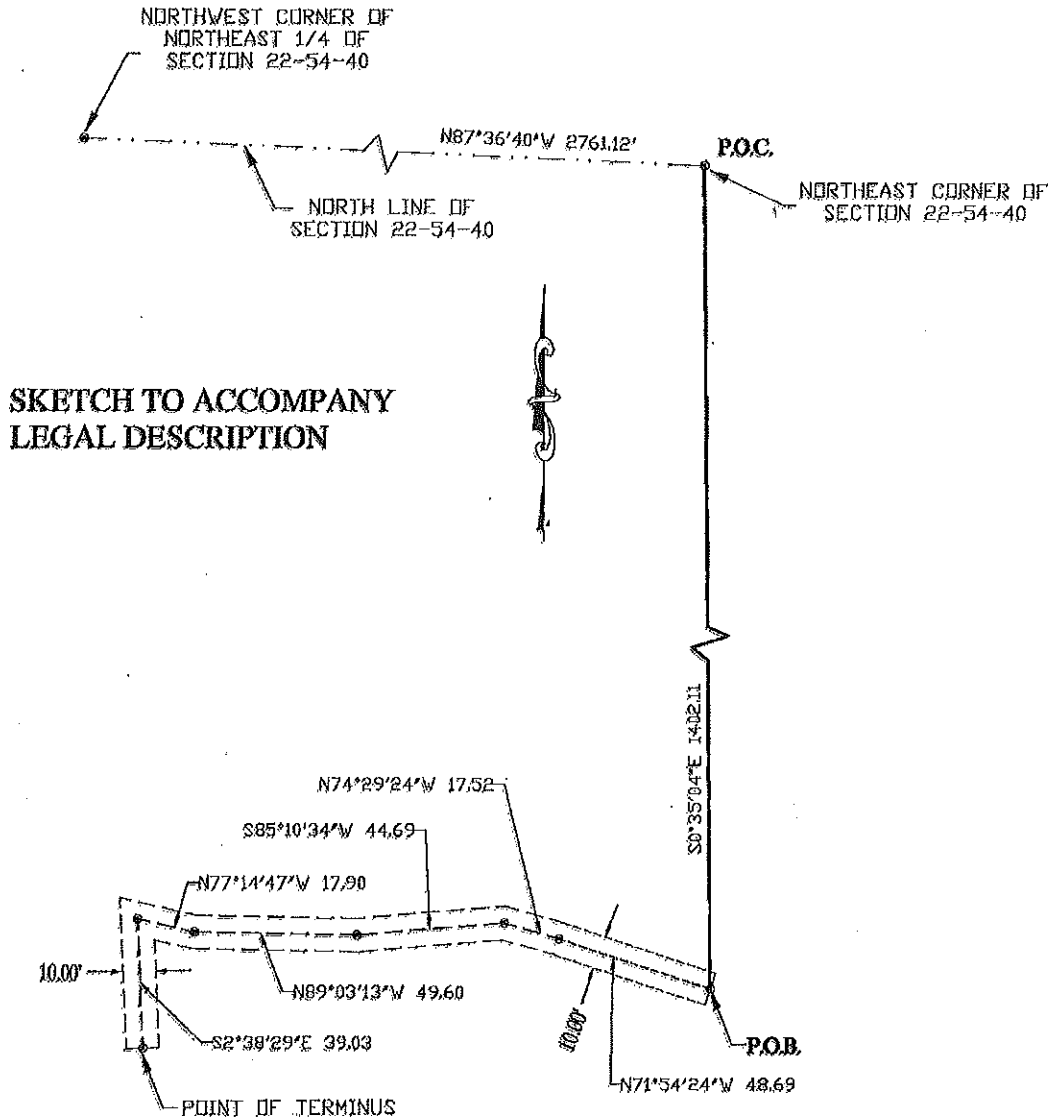
Side lines must be shortened or lengthened as the case may be to maintain the 10 feet easement conformation. Having 2,174 Sq. ft. more or less.



SCOTT A. RIGGS, PSM
Florida License # 6160
140 West Flagler Street, Suite # 805
Miami, Florida 33130 (305) 375-2657
Date: 06-13-2014

This Description and the accompanying sketch are not valid without the signature and raised seal of a Florida Licensed Surveyor and Mapper. This description and the accompanying sketch are not valid one without the other.

**EXHIBIT "A".
10' UTILITY EASEMENT**



MIAMI-DADE COUNTY
PUBLIC WORKS AND WASTE MANAGEMENT
DATE: 06-13-2014 SCALE: NOT TO SCALE

NOTES.

- 1- THIS IS NOT A BOUNDARY SURVEY.
- 2- The Bearings shown hereon are based on The Florida State Plane Coordinate System, East Zone, North American Datum of 1927
- 3- P.O.C. denotes point of commence.
- 4- P.O.B. denotes point of beginning.