



MEMORANDUM

Agenda Item No. 8(N)(1)(A)

**TO:** Honorable Chairman Joe A. Martinez  
and Members, Board of County Commissioners

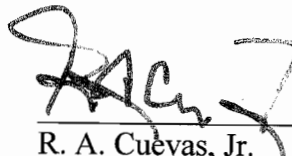
**DATE:** October 4, 2011

**FROM:** R. A. Cuevas, Jr.  
County Mayor

**SUBJECT:** Resolution authorizing the county mayor designee to execute the sustainable communities grant consortium agreement; authorizing the mayor to apply for, receive and expend grant funds and execute contracts, agreements, and amendments after approval by the County Attorney

Resolution No. R-786-11

The accompanying resolution was prepared by the Department of Planning and Zoning and placed on the agenda at the request of Prime Sponsor Vice Chairwoman Audrey M. Edmonson, and Co-Sponsors Commissioner Barbara J. Jordan and Commissioner Jean Monestime.

  
\_\_\_\_\_  
R. A. Cuevas, Jr.  
County Attorney

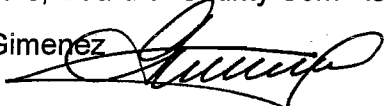
RAC/cp

# Memorandum



**Date:** October 4, 2011

**To:** Honorable Chairman Joe A. Martinez  
and Members, Board of County Commissioners

**From:** Carlos A. Gimenez  
Mayor 

**Subject:** Southeast Florida Regional Partnership - HUD Sustainable Communities Planning Grant

---

## **Recommendation**

It is recommended that the Board of County Commissioners (BCC) approve the attached resolution that authorizes the County Mayor or the County Mayor's designee to: 1) execute the attached Sustainable Communities Grant Consortium Agreement (Attachment 1) which would allow the County to participate in a collaborative regional partnership, with the South Florida Regional Planning Council (SFRPC) and Treasure Coast Regional Planning Council (TCRPC), that received funding for the *Southeast Florida Regional Vision and Economic Blueprint for Prosperity* and 2) apply for, receive and expend grant funds, and to execute such contracts, agreements, and amendments necessary to participate as a Subgrantee, pursuant to the Consortium Agreement, and as provided in the County's Scope of Services (Attachment 2). The Scope of Services as submitted to the South Florida Regional Planning Council in July, 2011, provides details on the County's role as a Subgrantee.

## **Scope**

In May 2010, the BCC authorized the County Mayor or the County Mayor's designee to enter into a memorandum of understanding with the SFRPC to apply for the U.S. Department of Housing and Urban Development (HUD) Sustainable Communities Planning Grant program funds. The SFRPC was subsequently awarded \$4.25 million for a regional planning initiative. Miami-Dade County is participating in a regional partnership through the SFRPC and TCRPC to plan, design, and implement a multi-jurisdictional regional plan for sustainable development. This seven-county initiative includes Indian River, St. Lucie, Martin, Palm Beach, Broward, Monroe, and Miami-Dade. The attached Sustainable Communities Grant Consortium Agreement is required by the U.S. Department of Housing and Urban Development (HUD).

## **Fiscal Impact/Funding Source**

As shown in Attachment 3, partners will be providing in-kind matching services through staff time. Miami-Dade County staff will be providing a minimum of \$25,000 worth of staff time over the three year term of the project. The County expects to enter into an interlocal agreement to receive grant funding through the SFRPC. Participation in the South East Florida Regional Partnership will enable Miami-Dade County to receive bonus points for future HUD grant applications.

## **Track Record/Monitor**

The Department of Planning and Zoning will serve as the lead department to coordinate County efforts and serve as the primary liaison with the Planning Councils, the six partner counties and other County departments including, but not limited to Office of Sustainability; Miami-Dade Public Housing Agency; Miami Dade Transit; Department of Housing and Community Development; Metropolitan Planning Organization; and Department of Environmental Resources Management.

## **Background**


The regional partnership will develop the *Southeast Florida Regional Vision and Blueprint for Economic Prosperity* to ensure that planning and investment decisions yield a more prosperous, inclusive, and sustainable region. The process will be the first comprehensive effort to develop a regional plan that spans the existing jurisdictions of two regional planning councils, multiple state agency sub-districts, six

metropolitan and transportation planning organizations, numerous special districts, seven counties, over 100 municipalities, and a diverse mix of business, social and ethnic organizations.

Public, private, and civic partnerships will engender cooperation in guiding growth and development on a local level that will, at the same time, produce better benefits to the region as a whole. The fundamental objectives of the project are to:

- Develop a unifying vision for the Southeast Florida region that will result in a vibrant, resilient economy; livable communities; and sustainable development over the next 50 years. The vision will include implementation steps for local governments as well as recommendations for private and civic stakeholders;
- Initiate a broad educational effort to increase understanding of shared regional assets; issues, challenges and opportunities facing the region; and the necessity for cooperation to sustain the economy, environment, and quality of life as the region moves into the future;
- Achieve regional public participation and engagement in the planning process to engender community champions and supporters of the process who will translate the vision into reality;
- Expand the capacity of local governments and regional and community leaders from the public, private, and civic sectors to develop and implement the Regional Vision and Blueprint;
- Improve communication and build bridges to ensure participation in ongoing planning and decision-making in the region; and
- Ensure that all segments of the population are involved and engaged in the decision-making process, with particular emphasis on traditionally under-represented residents.

Attachments



---

Jack Osterholt  
Deputy Mayor



# MEMORANDUM

(Revised)

**TO:** Honorable Chairman Joe A. Martinez  
and Members, Board of County Commissioners

**DATE:** October 4, 2011

**FROM:**   
R. A. Cuevas, Jr.  
County Attorney

**SUBJECT:** Agenda Item No. 8(N)(1)(A)

Please note any items checked.

- "3-Day Rule" for committees applicable if raised**
- 6 weeks required between first reading and public hearing**
- 4 weeks notification to municipal officials required prior to public hearing**
- Decreases revenues or increases expenditures without balancing budget**
- Budget required**
- Statement of fiscal impact required**
- Ordinance creating a new board requires detailed County Manager's report for public hearing**
- No committee review**
- Applicable legislation requires more than a majority vote (i.e., 2/3's \_\_\_\_, 3/5's \_\_\_\_, unanimous\_\_\_\_) to approve**
- Current information regarding funding source, index code and available balance, and available capacity (if debt is contemplated) required**

Approved \_\_\_\_\_ Mayor  
Veto \_\_\_\_\_  
Override \_\_\_\_\_

Agenda Item No. 8(N)(1)(A)  
10-4-11

RESOLUTION NO. R-786-11

RESOLUTION AUTHORIZING THE COUNTY MAYOR OR COUNTY MAYOR'S DESIGNEE TO EXECUTE THE SUSTAINABLE COMMUNITIES GRANT CONSORTIUM AGREEMENT; AUTHORIZING THE MAYOR OR THE MAYOR'S DESIGNEE TO APPLY FOR, RECEIVE AND EXPEND GRANT FUNDS AND EXECUTE CONTRACTS, AGREEMENTS, AND AMENDMENTS AFTER APPROVAL BY THE COUNTY ATTORNEY

**WHEREAS**, on May 18, 2010, this Board entered into a memorandum of understanding with the South Florida Regional Planning Council (SFRPC) to apply for the U.S. Department of Housing and Urban Development (HUD) Sustainable Communities Planning Grant program funds; and

**WHEREAS**, the SFRPC was awarded funding by the U.S. Department of Housing and Urban Development for the *Southeast Florida Regional Vision and Blueprint for Economic Prosperity*; and

**WHEREAS**, participation as a consortium member is required to receive HUD Sustainable Communities Planning Grant program funds; and

**WHEREAS**, the County submitted a Scope of Services to the SFRPC to participate as a Subgrantee, as outlined in the Consortium Agreement; and

**WHEREAS**, the County desires to accomplish the objectives outlined in the accompanying memorandum, a copy of which is incorporated herein by reference,

**NOW, THEREFORE, BE IT RESOLVED BY THE BOARD OF COUNTY COMMISSIONERS OF MIAMI-DADE COUNTY, FLORIDA,** that this Board authorizes the Mayor or the Mayor's designee to (1) execute the Sustainable Communities Grant Consortium Agreement, in substantially the form attached hereto; (2) apply for, receive and expend grant funds; and (3) execute contracts, agreements, and amendments, following approval by the County Attorney, necessary to participate as a Subgrantee consistent with the Scope of Services provided to the South Florida Regional Planning Council.

The foregoing resolution was offered by Commissioner **Rebeca Sosa** , who moved its adoption. The motion was seconded by Commissioner **Jean Monestime** and upon being put to a vote, the vote was as follows:

	Joe A. Martinez, Chairman	<b>absent</b>
	Audrey M. Edmonson, Vice Chairwoman	<b>aye</b>
Bruno A. Barreiro	<b>absent</b>	Lynda Bell <b>aye</b>
Esteban L. Bovo, Jr.	<b>aye</b>	Jose "Pepe" Diaz <b>aye</b>
Sally A. Heyman	<b>aye</b>	Barbara J. Jordan <b>aye</b>
Jean Monestime	<b>aye</b>	Dennis C. Moss <b>aye</b>
Rebeca Sosa	<b>aye</b>	Sen. Javier D. Souto <b>aye</b>
Xavier L. Suarez	<b>aye</b>	

The Chairperson thereupon declared the resolution duly passed and adopted this 4th day of October, 2011. This resolution shall become effective ten (10) days after the date of its adoption unless vetoed by the Mayor, and if vetoed, shall become effective only upon an override by this Board.



MIAMI-DADE COUNTY, FLORIDA  
BY ITS BOARD OF  
COUNTY COMMISSIONERS

HARVEY RUVIN, CLERK

**Christopher Agrippa**

By: \_\_\_\_\_  
Deputy Clerk

Approved by County Attorney as  
to form and legal sufficiency.

A handwritten signature in black ink, appearing to read "ASR".

Abbie Schwaderer-Raurell

## Southeast Florida Regional Partnership

Indian River - St. Lucie - Martin  
Palm Beach - Broward - Miami-Dade - Monroe

### Sustainable Communities Grant Consortium Consortium Agreement

**WHEREAS**, In June 2009, the U.S. Departments of Housing and Urban Development (HUD), Transportation, and the Environmental Protection Agency announced the creation of an interagency partnership and Sustainable Communities Regional Planning Grant Program that would support regions who committed to work collaboratively across jurisdictional boundaries to create "Regional Plans for Sustainable Development";

**WHEREAS**, the South Florida Regional Planning Council (SFRPC), working in partnership with the Treasure Coast Regional Planning Council (TCRPC), entered into memoranda of understanding (MOU) with 130 organizations, with an additional 70 organizations providing letters and resolutions of support, to create the Southeast Florida Regional Partnership (Partnership);

**WHEREAS** on behalf of the Partnership, the South Florida Regional Planning Council (SFRPC), as lead applicant, submitted an application to the U.S. Department of Housing and Urban Development and was subsequently selected as one of 45 recipients of the first round of Sustainable Communities grants in 2010;

**WHEREAS**, as part of the application process a subset of Partnership members were organized to form the nucleus of a strong leadership consortium called the "Sustainable Communities Grant Consortium" that would be expanded over time to include additional Partnership members;

**WHEREAS**, initial Consortium participants include approximately 45 local governments, metropolitan and transportation planning organizations, nonprofit community-based organizations, professional associations, public and private sector organizations, and educational institutions; and

**WHEREAS**, at the time of the application the Consortium participants agreed to enter into formal Consortium Agreements (Agreement) with the SFRPC within 120 days (June 21, 2011) of the formal Cooperative Agreement entered into with HUD on February 21, 2011.

**NOW THEREFORE, the Parties hereto agree as follows:**

**I. Consortium Participants:** This Agreement is entered into by members of the Southeast Florida Regional Partnership's Sustainable Communities Grant Consortium (Consortium).

**II. Goal:** The Consortium will work together to successfully carry out the activities outlined in the Southeast Florida Regional Partnership's work plan to create a "Regional Vision and Blueprint for Economic Prosperity," (Regional Vision and Blueprint) approved by the U.S. Department of Housing and Urban Development (HUD) on May 11, 2011. The work plan, milestones, and schedules will be more fully developed by the Partnership's Executive Committee, the chief governing board for the Partnership and the Consortium; Partnership and Consortium participants; and work groups. Please see Attachment A – Abstract and Work Plan Summary. The Partnership and Consortium will take the following six steps to achieve and sustain the Regional Vision and Blueprint:

- Build long term collaborative partnerships;
- Build and support the region's leadership capacity;
- Measure where the region currently is and where it will likely be if trends continue;
- Identify a vision of the future with better outcomes than identified in the current conditions and trend analysis;

7



- Engage communities in developing plans to achieve the Regional Vision and Blueprint with emphasis on equitable and achievable outcomes; and
- Develop strategies to implement the Regional Vision and Blueprint and measure progress towards the Regional Vision and Blueprint outcomes.

**III. Purpose of the Agreement:** The purpose of this Agreement is to formalize the roles and commitments of the Consortium participants as they are known today. The Partnership and Consortium will work over the next three years to create and lay the foundation for implementation of the Regional Vision and Blueprint.

**IV. Roles / Commitments:** Please see Attachment B for specific commitments of in-kind, cash, or additional leverage fund contribution.

Partnership and Consortium participants, as regional leaders, commit to develop and implement the Regional Vision and Blueprint unless it is detrimental to their organization and/or the region. Specifically Consortium participants agree to:

- Assist and participate in the development of strategies, plans and tools;
- Assist in engaging stakeholders, particularly local and hard-to-reach populations;
- Help assess, analyze, and evaluate plans, strategies, tools, and projects;
- Play specific roles in implementing local projects providing leadership, staff support, research, oversight, or financial support;
- Participate in educational and outreach opportunities through classes, meetings, conferences, and workshops; and
- Assist in developing and refining the visions and plans that constitute the elements of a sustainable region and integrating these visions.

Furthermore, Consortium participants reaffirm:

- The SFRPC will act in the representative capacity with HUD on behalf of all members of the Consortium and the SFRPC agrees to assume administrative responsibility for ensuring the Consortium's program is carried out in compliance with HUD requirements and the Federal Funding Accountability and Transparency Act of 2006;
- To work cooperatively with the SFRPC (lead applicant), the TCRPC, and other Partnership and Consortium participants to develop the Regional Vision and Blueprint;
- To work with the Executive Committee established as the overall governing body for the Partnership to ensure full participation by Partnership and Consortium participants in developing and implementing the Regional Vision and Blueprint, and to involve additional committees, organizations, and groups as part of the community engagement work that is integral to this effort; and
- To commit leveraged resources, as provided in Attachment B, in terms of staff, financial investment, or other resources in support of carrying out the work program to the best of their ability.

Consortium participants will designate a primary delegate and a backup delegate to serve as points of contact for the participating organization and to participate in meetings of the Consortium. The Consortium delegates or their designees will meet at least three times a year to receive reports on the work of the Consortium and the Partnership and will function as an advisory board for the development of the Regional Vision and Blueprint and related work plan activities. The SFRPC, as lead fiscal agent, will maintain a list of all Consortium delegates and their primary designees.

Any Consortium member may terminate its membership in the Partnership upon written notice from the organization's Executive Director or Chief Executive Officer, with hard copy by U.S. Mail, to the Executive Director of the SFRPC. Termination of Consortium member status shall not relieve a member of any responsibilities or liabilities already incurred.

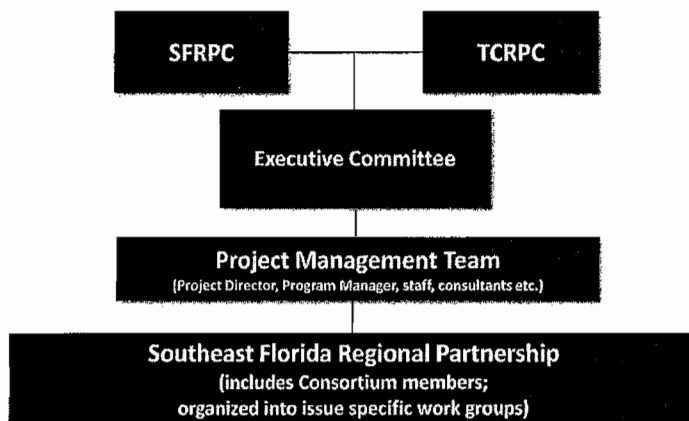
## V. Governance Structure and Decision-making:

The following principles guide the Partnership's organization:

- Build an enduring consensus and constituency for the Regional Vision and Blueprint;
- Develop a clear organizational structure and decision-making protocols for the Partnership;
- Create multiple, meaningful opportunities for engagement, input and decision-making from the full range of public, private, and civic/nonprofit partners in the region, including traditionally underrepresented stakeholders;
- Enable "joinability" so that the Partnership and Consortium can continue to grow over time;
- Build on the strengths of existing institutions in the region;
- Engage and build ownership among implementing agencies and stakeholders early and throughout the process;
- Ensure transparency and clear lines of accountability and reporting; and
- Adapt the Partnership's organizational model over time as the project shifts from visioning to implementation.

### Southeast Florida Regional Partnership

#### Organization



#### Mission Statement

*The Southeast Florida Regional Partnership will create and implement a "Regional Vision and Blueprint for Economic Prosperity" to support the creation of a vibrant and resilient economy; socially inclusive, sustainable, and equitable communities; and environmental sustainability.*

The core elements of the organization include the following:

**Southeast Florida Regional Partnership:** Provides a regional forum for discussion and consensus building on issues of importance to Southeast Florida. The Partnership will develop and approve the Regional Vision and Blueprint, and support long-term implementation of Regional Vision and Blueprint through individual and collective action. During the visioning process the Partnership will primarily conduct its work through issue-specific Work Groups, augmented by at least four summits of the entire Partnership during the visioning process. In parallel with the visioning process, the Partnership will explore options for a long-term optimal structure to assist with implementation, progress review, and future updates. The intent is for the Partnership to develop a long-term structure for its ongoing operations by the conclusion of the visioning process.

To join the Partnership, organizations must sign an MOU and commit to work collaboratively to advance the region's livability and sustainability through implementation of the work program developed by the Partnership with support of the Sustainable Communities Planning Grant Program. Partnership members who are not currently Consortium participants and have pledged leverage and in-kind support, or other interested Partnership members, may wish to become Consortium participants with additional responsibilities in the development and implementation of the work plan.

**Partnership Work Groups:** Serve as regional subject matter experts in identified issue areas, and develop technical and policy recommendations and draft products for review by the Partnership. Work Group membership will be open to Partnership members (individuals and organizations) interested in the subject matter. The Partnership Executive Committee will ensure the membership of each Work Group reflects a mix of perspectives among the public, private, and civic sectors; among subareas and types of communities in the region (coastal, urban, suburban, and rural); and among socioeconomic/ethnic groups including traditionally underrepresented groups. The chair and vice chair of each Work Group will be identified by the Partnership's Executive Committee.

**Sustainable Communities Grant Consortium:** Serve as the core team within the Partnership for meeting HUD requirements and carrying out activities to develop the Regional Vision and Blueprint. Consortium participants will support key activities as defined in this Agreement under IV. Roles and Commitments.

Consortium participants agree to the basic commitments and responsibilities outlined for Partnership members, as well as the additional commitment, as provided in Attachment B, of leveraged resources in terms of staff, financial investment, or other resources.

Certain Consortium participants will be identified as Subgrantees with a commitment to provide specific program assistance funded through grant funds. All Subgrantees will have a contract with the SFRPC that specifies specific deliverables and time frames and passes through all HUD grant requirements. These contracts will be more clearly defined following appointment of the Project Director and Program Manager.

**Executive Committee:** Serve as the overall governing board for Partnership. The Executive Committee will oversee the Sustainable Communities Regional Planning Grant administration; establish the project organization; approve the overall work plan; recommend the selection of staff and consultants to the Regional Planning Council boards for action; provide guidance to the Project Director and Program Manager; provide policy direction for the Regional Vision and Blueprint; ensure all constituencies have meaningful opportunities to engage and shape the process; identify and resolve significant issues arising during the process; recommend the final Regional Vision, Blueprint, and implementation plan; and recommend the long-term structure for Southeast Florida Regional Partnership. The Executive Committee has 17 initial members as identified in the grant application. The Committee is designed to expand as needed to ensure representation of segments of the region as needed to make the Executive Committee more responsive to the needs of all residents and businesses. The Executive Committee has established two subcommittees to guide its initial work: an Operations Subcommittee and an Organization and Equity Subcommittee.

**Regional Planning Councils / Project Management Team:** The SFRPC will act as the fiscal agent for the grant. The SFRPC will work with the TCRPC to manage the work program, including hiring the Project Director, Program Manager, and other staff and consultants; developing consultant scopes of work and budgets; and providing technical and consensus-building assistance to Consortium and Partnership members.

The intent for these committees and work groups is to use a consensus decision-making process. This entails substantial engagement of all parties, full transparency, extensive dialog, and ultimately crafting policies and decisions that are acceptable to all parties. The process takes longer, but produces results that when embraced, will provide the foundation for continuing work. If full consensus cannot be reached then the Executive Committee will be in a position to take a majority vote on a specific issue as well as a super-majority vote to approve the final Regional Vision and Blueprint.

**VI. Partner Roles / Commitments:** The members of the Southeast Florida Regional Partnership will belong to one of three tiers.

**TIER 1 – Partnership Member.** Basic tier of participation. All Partnership members have signed a MOU and committed to work collaboratively to advance regional livability principles through implementation of the work program developed by the Partnership with support from the Sustainable Communities Grant Program.

**TIER 2 – Sustainable Communities Grant Consortium Member.** This includes the basic commitments and responsibilities outlined for Partnership members, but also includes additional commitment of leveraged resources in terms of staff, financial investment, or other resources. To be a Consortium member, a Partnership member must execute a consortium agreement to formalize their greater level of commitment and direct involvement in the development and implementation of the Regional Vision and Blueprint for Economic Prosperity.

**TIER 3 – Consortium Subgrantees.** In addition to general Consortium participant commitments and responsibilities, a subset of Consortium participants may be asked to perform specific work program tasks. In addition to this Agreement, Consortium Subgrantees will be required to enter into a contract with specific deliverables and time frames, and meet all HUD requirements.

As the Regional Vision and Blueprint for Economic Prosperity initiative unfolds, work groups meet, and the Executive Committee makes decisions on process and content, new roles and responsibilities may emerge. These new roles and responsibilities will be captured in project scopes and new agreements.

**VII. Accountability:** To ensure successful completion of the project activities, Consortium participants will designate a primary delegate and a backup delegate to serve as points of contact for the participating organization with the SFRPC and participate in meetings of the Consortium. Consortium participants shall participate in meetings and provide leverage, as provided in Attachment B, and in-kind reporting forms to the SFRPC as requested to meet all HUD requirements. Guidance regarding general reporting for leverage and in-kind funds will be provided once it is received from HUD. Subgrantee contracts will contain specific deliverables, time frames, and reporting requirements.

Overall initiative accountability will be managed by a three level project management system.

**Level I** - The highest level is reporting periodically on individual project progress and how that relates to the overall initiative progress. This will be done through the website and quarterly status reports.

**Level II** - Project management of specific work tasks or projects will include identified tasks and timelines which will be captured and monitored. The Project Director and Program Manager will be responsible for ensuring that work tasks undertaken by Consortium participants, who may also be subgrantees, are tracked, recorded, and incorporated into an overall project management system to ensure timely completion of delegated tasks.

**Level III** - The third level of project accountability will be the oversight of the Executive Committee, which will meet at least once per quarter to review progress on individual projects as well as the overall initiative.

**VIII. Joinability:** The Southeast Florida Regional Partnership and the Sustainable Communities Grant Consortium will continue to grow over time. An ongoing task will be to reach out to potential new partners and seek their membership and active involvement. New partners will be asked to sign the Partnership MOU or Consortium Agreement as appropriate. Interested stakeholders who have not joined the Partnership will be able to participate in appropriate work groups and the regional summits and community workshops, and will be encouraged to join the Partnership as members.

**VIII. Public Engagement:** All meetings of the Southeast Florida Regional Partnership and the Consortium are publicly noticed. On most occasions, interested persons can participate by phone, webinar, or in person. The Consortium will implement a wide ranging public engagement process throughout the region that prioritizes the engagement of all community residents and stakeholders, particularly groups traditionally underrepresented in public planning processes. This process will include community outreach, written and visual materials and information accessible to disabled populations. The public involvement component will ensure the participation of a wide range of stakeholders to ensure a diversity of population, viewpoints, and issues.

**X. Other Considerations:** As indicated above, Subgrantees (Tier 3) will have individual contractual instruments specific to their circumstances, responsibilities, and commitments. Special circumstances requiring governance changes, representation, changes or other alterations to agreements or process will be reviewed by the Executive Committee and final action taken by SFRPC, the lead fiscal agent.

Benefits for participation in the Partnership and Consortium are the enhanced ability of the region and individual communities to develop and implement the Regional Vision and Blueprint for Economic Prosperity. By participating in the Partnership and Consortium, work partners will be able to influence the development of plans, strategies, and tools and access those tools for their own use. In addition, partners will have the potential opportunity to access additional federal and other funds to advance their own prosperity, livability, and sustainability goals as long as they also further the regional priorities.

By my signature below, my organization / agency reaffirms its commitment to serve as a member of the Sustainable Communities Grant Consortium in accordance with the terms outlined in this Agreement. I understand that this Agreement will be executed in one or more counterparts, each of which will be deemed an original, but all of which will constitute one and the same instrument. The executed Agreement will be kept on file at the South Florida Regional Planning Council.

This Agreement will become effective upon signature by any two parties and may be terminated upon written notice to the South Florida Regional Planning Council. The provisions of this Agreement will be reviewed periodically and amended or supplemented, as appropriate, as may be mutually agreed upon.

\_\_\_\_\_  
Signature  
Name, Title  
Company

Date: \_\_\_\_\_

\_\_\_\_\_  
Signature  
Executive Director  
South Florida Regional Planning Council

Date: \_\_\_\_\_

Please return executed agreement to:

Executive Director  
South Florida Regional Planning Council  
3440 Hollywood Boulevard, Suite 140  
Hollywood, Florida 33021

12

**Attachment 2**  
**Southeast Florida Regional Partnership**  
**Miami-Dade County Scope of Services Submitted to the**  
**South Florida Regional Planning Council on July 20, 2011**

---

Below is a description of proposed tasks based on the work plan approved by the U.S. Department of Housing and Urban Development (HUD). Unless otherwise noted below the information, data and analysis and other work tasks described below are specific to Miami-Dade County.

***Overall Governance and Management***

- Miami-Dade County will assist the SFRPC with the expansion of the four county *Southeast Florida Climate Change Compact* to seven counties

***Task 1 – Build Collaborative Partnerships***

- Lead or assist with leading a working group

***Task 2 – Regional Scorecard***

- Inventory and analyze smart growth policies in local government comprehensive plans and zoning codes
- Inventory and analyze local government sustainability plans and practices
- Inventory infrastructure, economic, cultural and recreational assets for climate resiliency
- Conduct Geographic Information Systems analysis and mapping
- Identify data gaps for measures
- Provide studies and data for the Regional Resources Library and Data Warehouse
- Assist with developing the Virtual Present (baseline)
- Assist with developing the Trend Scenario
- Compare municipal comprehensive plans and Miami-Dade County's Comprehensive Development Master Plan to document similarities and reconcile discrepancies for input into the Virtual Present, Trend Scenario and Alternative Scenarios
- Provide the following information for input into the Virtual Present, Trend Scenario and Alternative Scenarios: population projections; demographic data; infrastructure maps; housing data; transportation facilities; water service; wastewater service; historic, cultural and ethnic assets; sustainable development practices; healthy communities characteristics; natural systems and climate change / sea level rise adaptation plans

***Task 3 – Participate in Public Outreach and Engagement***

- Provide outreach and education to residents typically under represented
- Utilize existing public outreach network to inform and educate the community
- Include Regional Vision and Blueprint for Economic Prosperity message in GreenPrint messaging tools and events
- Quarterly updates to boards and elected officials to build support for plan acceptance and implementation (BCC, MPO, local governments, etc.)
- Participate in regional summits, visioning and scenario workshops

- Create Educational Materials - Best Practices and Case Studies
  - Share success stories, such as the county's codified Area Plan process, which promotes urban infill at urban centers. County staff manages the entire process from charrette to community based master plan and rezoning to administrative site plan approval and construction (e.g., Downtown Kendall and Brownsville Transit-Oriented Development)
  - Current projects occurring during the grant period, such as, Palmer Lake Charrette adjacent to Miami Intermodal Center, corridor planning, urban design manual update and Community Health and Design Element of the Comprehensive Development Master Plan

***Task 4 – Enhance Regional Leadership and Technical Capacity***

- Identify Miami-Dade County leaders to build support for the Regional Vision and Blueprint
- Assist with social asset mapping

***Task 5 – Regional Vision***

- Provide data and assist with developing the Alternative Future Scenarios
- Assist with the Regional Scorecard evaluation, interpreting the results and development of the Preferred Scenario and Regional Vision

***Task 6 – Regional Blueprint***

- Assist with the conversion of the vision into specific goals, objectives and implementation strategies
- Assist with the implementation matrix
- Assist with developing strategies to integrate blueprint elements into local plans

***Task 7 – Begin Implementation***

- Assist with developing the sustainable development toolbox
- Conduct a demonstration project
- Explore opportunities to fund demonstration projects
- Provide a compendium of successful sustainable development projects and programs in Miami-Dade County
- Assist with implementation of the Regional Vision through the County's GreenPrint Implementation Teams and Transit / Land Use Working Group

**Southeast Florida Regional Partnership  
Consortium Members Agreement Tracking and In-Kind Leverage Summary**

	IN PROCESS	IN PROCESS	IN PROCESS	IN PROCESS	IN PROCESS
Consortium Member (August 2010)	Please confirm your Organization's in-kind contribution over three years in this column.	Contact E-mail	Key Contact	Work to be accomplished in support of Southeast Florida's Regional Vision and Blueprint for Economic Prosperity	Board Meeting / Status of Consortium Agreement
1000 Friends of Florida	Awaiting confirmation	<a href="mailto:cpattison@1000fof.org">cpattison@1000fof.org</a>	Charles Pattison President & CEO	In-kind support including professional time and services; participation in meetings and on committees; outreach activities; technical assistance and training support in the areas of growth management and climate change.	Requested
Broward County	Awaiting confirmation	<a href="mailto:pross@broward.org">pross@broward.org</a> <a href="mailto:cchambers@broward.org">cchambers@broward.org</a> <a href="mailto:bhenry@broward.org">bhenry@broward.org</a>	Peter M. Ross, Environmental Protection and Growth Management, Deputy Director	1) EECBG Climate Change Task Force public outreach and planning activities; 2) Evaluation and Appraisal of Comprehensive Plan (public workshops, public hearings, and outreach); and 3) Housing Council Annual Work Program (meetings with NPOs, citizens, special populations, outreach); and In-kind staff support for three (3) above programs.	28-Jun-11
Broward MPO	Awaiting confirmation	<a href="mailto:stuartg@browardmpo.org">stuartg@browardmpo.org</a>	Gregory Stuart, Executive Director	In-kind support including outreach activities; research and evaluation activities; and technical assistance.	14-Jul-11

5



**Southeast Florida Regional Partnership  
Consortium Members Agreement Tracking and In-Kind Leverage Summary**

	IN PROCESS	IN PROCESS	IN PROCESS	IN PROCESS	IN PROCESS	IN PROCESS
Consortium Member (August 2010)	Work to be accomplished in support of Southeast Florida's Regional Vision and Blueprint for Economic Prosperity	Key Contact	Contact E-mail	Please confirm your Organization's in-kind contribution over three years in this column.	Board Meeting/ Status of Consortium Agreement	
Catalyst Miami (formerly Human Services Coalition)	In-kind support via donation of professional time and services; participation in meetings and committees; outreach activities; technical training; office supplies; production of flyers; and use of office equipment.	Daniella Levine President & CEO	daniellal@hscdade.org	\$75,000	Agreement Received	
City of Boca Raton	In-kind support including professional time and services, part of professional staff; participation in meetings and on committees, outreach activities, research, evaluation support and technical assistance.	Leif Ahnell City Manager  Julia Trevarthen, Planning Director  Teresa McClurg, Administrator Community Improvement	itrevarthen@ci.bocaraton.fl.us tmccclurg@ci.bocaraton.fl.us	\$50,000	28-Jun-11	

16

**Southeast Florida Regional Partnership  
Consortium Members Agreement Tracking and In-Kind Leverage Summary**

	IN PROCESS	IN PROCESS	IN PROCESS	IN PROCESS	IN PROCESS	IN PROCESS
Consortium Member (August 2010)	Please confirm your Organization's in-kind contribution over three years in this column.	Contact E-mail	Key Contact	Work to be accomplished in support of Southeast Florida's Regional Vision and Blueprint for Economic Prosperity	Key Contact	Board Meeting / Status of Consortium Agreement
City of Delray Beach	Awaiting confirmation	<a href="mailto:harden@mydelraybeach.com">harden@mydelraybeach.com</a> <a href="mailto:dorlingp@mydelraybeach.com">dorlingp@mydelraybeach.com</a> <a href="mailto:hoggardr@mydelraybeach.com">hoggardr@mydelraybeach.com</a>	Paul Dorling, Director Planning and Zoning Ron Hoggard, Principal Planner	In-kind support of professional staff; participation in meetings and on committees		5-Jul-11
City of Fort Lauderdale	Awaiting confirmation	<a href="mailto:jack.seiler@fortlauderdale.gov">jack.seiler@fortlauderdale.gov</a> <a href="mailto:wjessup@fortlauderdale.gov">wjessup@fortlauderdale.gov</a> <a href="mailto:lfeldman@fortlauderdale.gov">lfeldman@fortlauderdale.gov</a>	Wayne Jessup Deputy Director Planning and Zoning Lee Feldman City Manager	The Office of Grants & Legislative Affairs will provide professional service in-kind support in the form of participation in meetings on project issues and committees; public outreach; and assistance with research and evaluation activities. Sustainability planning activities including infrastructure improvements, community and economic development activities, energy efficiency, environmental justice, and green building planning and projects.		5-Jul-11

17

**Southeast Florida Regional Partnership  
Consortium Members Agreement Tracking and In-Kind Leverage Summary**

	IN PROCESS	IN PROCESS	IN PROCESS	IN PROCESS	IN PROCESS
<p>Consortium Member (August 2010)</p>	<p>Work to be accomplished in support of Southeast Florida's Regional Vision and Blueprint for Economic Prosperity</p>	<p>Key Contact</p>	<p>Contact E-mail</p>	<p>Please confirm your Organization's in-kind contribution over three years in this column.</p>	<p>Board Meeting / Status of Consortium Agreement</p>
<p>City of Homestead</p>	<p>In-kind support of professional staff; participation in meetings and on committees</p>	<p>George Gretsas City Manager  Joe Corradino Director, Development Services</p>	<p><a href="mailto:ggretsas@cityofhomestead.com">ggretsas@cityofhomestead.com</a>  <a href="mailto:jcorradino@cityofhomestead.com">jcorradino@cityofhomestead.com</a></p>	<p>Awaiting confirmation</p>	<p>Requested</p>
<p>City of Key West</p>	<p>Infrastructure and public works improvement projects with associated planning activities; in-kind support including professional time and services; participation in meetings and on committees.</p>	<p>Sheila Griffin</p>	<p><a href="mailto:ischoll@keywestcity.com">ischoll@keywestcity.com</a> <a href="mailto:sheila.griffin@comcast.net">sheila.griffin@comcast.net</a></p>	<p>\$5,000</p>	<p>21-Jun-11</p>

**Southeast Florida Regional Partnership  
Consortium Members Agreement Tracking and In-Kind Leverage Summary**

IN-PROCESS	IN-PROCESS	IN-PROCESS	IN-PROCESS	IN-PROCESS	IN-PROCESS	IN-PROCESS
Board Meeting / Status of Consortium Agreement	Please confirm your Organization's in-kind contribution over three years in this column.	Contact E-mail	Key Contact	Work to be accomplished in support of Southeast Florida's Regional Vision and Blueprint for Economic Prosperity		
			<p>Johnny Martinez, City Manager</p> <p>Glenn Hadwen Environmental Program Manager</p> <p>Francisco Garcia Director, Planning</p>	<p>The City will provide professional in-kind support in the form of participation in meetings on project issues and committees; public outreach; and assistance with research and evaluation activities. Additional support will be provided to promote equitable, affordable housing, enhance economic competitiveness, coordinate policies and leverage investment, support the creation of sustainable communities, and enhance community resiliency to the impacts of climate change and sea level rise.</p>	<p>City of Miami</p>	<p>Requested</p>
	<p>Awaiting confirmation</p>	<p><a href="mailto:jmartinez@miamigov.com">jmartinez@miamigov.com</a> <a href="mailto:fgarcia@miamigov.com">fgarcia@miamigov.com</a> <a href="mailto:ghadwen@miamigov.com">ghadwen@miamigov.com</a></p>				

5

**Southeast Florida Regional Partnership  
Consortium Members Agreement Tracking and In-Kind Leverage Summary**

IN PROCESS	IN PROCESS	IN PROCESS	IN PROCESS	IN PROCESS	IN PROCESS	IN PROCESS
Board Meeting / Status of Consortium Agreement	Please confirm your Organization's in-kind contribution over three years in this column.	Contact E-mail	Key Contact	Work to be accomplished in support of Southeast Florida's Regional Vision and Blueprint for Economic Prosperity		
Requested	Awaiting confirmation	<p><a href="mailto:jgonzalez@miamibeachfl.gov">jgonzalez@miamibeachfl.gov</a>  <a href="mailto:jgomez@miamibeachfl.gov">jgomez@miamibeachfl.gov</a>  <a href="mailto:rlorber@miamibeachfl.gov">rlorber@miamibeachfl.gov</a></p>	<p>Jorge Gonzalez City Manager                       Richard Lorber Planning Director                       Jorge Gomez, Assistant City Manager</p>	<p>The City will participate in meetings and project issue committees, conduct community outreach, provide technical assistance and the use of the City's meeting facilities, and assist with research and evaluation activities.</p>		<p>City of Miami Beach</p>

**Southeast Florida Regional Partnership  
Consortium Members Agreement Tracking and In-Kind Leverage Summary**

IN PROCESS	IN PROCESS	IN PROCESS	IN PROCESS	IN PROCESS	IN PROCESS
Board Meeting / Status of Consortium Agreement	Please confirm your Organization's in-kind contribution over three years in this column.	Contact E-mail	Key Contact	Work to be accomplished in support of Southeast Florida's Regional Vision and Blueprint for Economic Prosperity	Consortium Member (August 2010)
	\$45,000	<a href="mailto:dennis.beach@copbfl.com">dennis.beach@copbfl.com</a> <a href="mailto:phyllis.korab@copbfl.com">phyllis.korab@copbfl.com</a> <a href="mailto:Robin.bird@copbfl.com">Robin.bird@copbfl.com</a> <a href="mailto:jennifer.gomez@copbfl.com">jennifer.gomez@copbfl.com</a>	Dennis Beach City Manager  Phyllis A. Korab, Assistant City Manager  Jennifer Gomez	In-kind support including professional time and services; participation in meetings and on committees; outreach activities; research and evaluation support; technical assistance and training support.	City of Pompano Beach

2

**Southeast Florida Regional Partnership  
Consortium Members Agreement Tracking and In-Kind Leverage Summary**

	IN PROCESS	IN PROCESS	IN PROCESS	IN PROCESS	IN PROCESS	IN PROCESS
Consortium Member (August 2010)	Please confirm your Organization's in-kind contribution over three years in this column.	Contact E-mail	Key Contact	Work to be accomplished in support of Southeast Florida's Regional Vision and Blueprint for Economic Prosperity		Board Meeting / Status of Consortium Agreement
City of Port St. Lucie	\$50,000	<a href="mailto:jbentrott@cityofpsl.com">jbentrott@cityofpsl.com</a> <a href="mailto:dholbrook@cityofpsl.com">dholbrook@cityofpsl.com</a> <a href="mailto:annec@cityofpsl.com">annec@cityofpsl.com</a>	JoAnn Faiella Mayor  Jerry Bentrott, City Manager  Daniel Holbrook, Director of Planning and Zoning  Anne Cox Asst Director	The City will provide professional in-kind support in the form of participation in meetings on project issues and committees; public outreach; and assistance with research and evaluation activities. Additional support will be provided in the creation and implementation of an urban reforestation program and the acquisition of foreclosed and abandoned homes for rehabilitation and resale to low/moderate/middle income individuals.		20-Jun-11
City of Sebastian	Awaiting confirmation	<a href="mailto:aminner@cityofsebastian.org">aminner@cityofsebastian.org</a> <a href="mailto:rgroholl@cityofsebastian.org">rgroholl@cityofsebastian.org</a>	Al Minner, City Manager  Rebecca Grohall, Growth Management Director	The City will provide professional in-kind support in the form of participation in meetings on project issues and committees; public outreach; and assistance with research and evaluation activities.		13-Jul-11

22

**Southeast Florida Regional Partnership  
Consortium Members Agreement Tracking and In-Kind Leverage Summary**

	IN PROCESS	IN PROCESS	IN PROCESS	IN PROCESS
Consortium Member (August 2010)	Work to be accomplished in support of Southeast Florida's Regional Vision and Blueprint for Economic Prosperity	Key Contact	Contact E-mail	Please confirm your Organization's in-kind contribution over three years in this column.
City of Vero Beach	In-kind support including professional planning staff participation in meeting and committees in the development of the regional plan for sustainable development.	Monte Falls, Interim City Manager Timothy McGarry Planning Director	<a href="mailto:citymgr@covb.org">citymgr@covb.org</a> <a href="mailto:timcgarry@covb.org">timcgarry@covb.org</a>	\$27,700
City of West Palm Beach and City of West Palm Beach CRA	In-kind support including professional time and services; participation in meetings and on committees; outreach activities; research and evaluation support; technical assistance and training support; use of equipment and meeting facilities; and preparation of flyers and marketing materials.	Ed Mitchell, City Administrator  Kim Briesemeister Redevelopment Manager and CRA Executive Director  Charles Wu, Planning Director	<a href="mailto:emitchell@wvwb.org">emitchell@wvwb.org</a> <a href="mailto:kbriesemeister@wvwb.org">kbriesemeister@wvwb.org</a> <a href="mailto:cwu@wvwb.org">cwu@wvwb.org</a>	Awaiting confirmation
				16-Aug-11
				11-Jul-11

23



**Southeast Florida Regional Partnership  
Consortium Members Agreement Tracking and In-Kind Leverage Summary**

IN PROCESS	IN PROCESS	IN PROCESS	IN PROCESS	IN PROCESS	IN PROCESS	IN PROCESS
Board Meeting / Status of Consortium Agreement	Please confirm your Organization's in-kind contribution over three years in this column.	Contact E-mail	Key Contact	Work to be accomplished in support of Southeast Florida's Regional Vision and Blueprint for Economic Prosperity	Consortium Member (August 2010)	
6/20/2011	\$10,000	pbacon@collinscenter.org	Phil Bacon, Vice President, Neighborhood and Regional Initiatives	In-kind services and support: staff expertise in planning, coordination, outreach, community education, training, and support to diverse and special populations; and participation in meetings and service on committees.	Collins Center for Public Policy	
May not be able to participate - City bankrupt	Awaiting confirmation	jgaryr@lauderdalelakes.org	Gary Rogers CRA Director	In-kind support including professional time and services; participation in meetings and on committees; outreach activities; research and evaluation support; technical assistance and training support; and use of equipment.	Community Redevelopment Agency (CRA) of the City of Lauderdale Lakes	

24

**Southeast Florida Regional Partnership  
Consortium Members Agreement Tracking and In-Kind Leverage Summary**

	IN PROCESS	IN PROCESS	IN PROCESS	IN PROCESS	IN PROCESS	IN PROCESS
Consortium Member (August 2010)	Please confirm your Organization's in-kind contribution over three years in this column.	Contact E-mail	Key Contact	Work to be accomplished in support of Southeast Florida's Regional Vision and Blueprint for Economic Prosperity	Content Creators	Board Meeting / Status of Consortium Agreement
Content Creators	\$30,000	jtcollie@gmail.com jodie@astorytellingcomp any.com	Tim Collie, Co-Founder, Executive Director	Content Creators will donate professional times and services; participate in meetings and project issue teams; provide technical assistance in the areas of communication strategies, website design, web content and forums utilizing social media tools to implement the design of the regional plan.	Content Creators	Agreement Received
Florida Atlantic University (FAU)	\$50,000	berry@fau.edu alperind@fau.edu	Leonard Berry, Ph.D. Director, FI Center for Environmental Studies  Diane Alperin, Ph.D. Interim Provost	FAU will provide in-kind support in the form of participation in meetings on project issues and committees; assistance with research and evaluation activities. FAU will also help coordinate climate change related activities and partnerships at local, state, and federal levels.	Florida Atlantic University (FAU)	Email dated June 13, 2011 - In process

25

**Southeast Florida Regional Partnership  
Consortium Members Agreement Tracking and In-Kind Leverage Summary**

Consortium Member (August 2010)	Work to be accomplished in support of Southeast Florida's Regional Vision and Blueprint for Economic Prosperity	Key Contact	Contact E-mail	Please confirm your Organization's in-kind contribution over three years in this column.	IN PROCESS	Board Meeting / Status of Consortium Agreement
Florida Department of Transportation (FDOT), Districts 4 and 6	In-kind support including professional time and services; participation in meetings and on committees; outreach activities; research and evaluation support; and technical assistance.	James A. Wolfe District 4 Secretary  Gus Pego District 6 Secretary  Lois Bush, District 4  Phil Steinmiller, District 6	<a href="mailto:james.wolfe@dot.state.fl.us">james.wolfe@dot.state.fl.us</a>  <a href="mailto:gus.peggo@dot.state.fl.us">gus.peggo@dot.state.fl.us</a> <a href="mailto:lois.bush@dot.state.fl.us">lois.bush@dot.state.fl.us</a> <a href="mailto:phil.steinmiller@dot.state.fl.us">phil.steinmiller@dot.state.fl.us</a>	\$150,000	IN PROCESS	21-Jun-11

26

**Southeast Florida Regional Partnership  
Consortium Members Agreement Tracking and In-Kind Leverage Summary**

IN-PROCESS	IN-PROCESS	IN-PROCESS	IN-PROCESS	IN-PROCESS	IN-PROCESS	IN-PROCESS
Board Meeting / Status of Consortium Agreement	Please confirm your Organization's in-kind contribution over three years in this column.	Contact E-mail	Key Contact	Work to be accomplished in support of Southeast Florida's Regional Vision and Blueprint for Economic Prosperity		
Email dated June 22, 2011 - In process	\$50,000	<a href="mailto:gila@fiu.edu">gila@fiu.edu</a> <a href="mailto:tgustafs@fiu.edu">tgustafs@fiu.edu</a> <a href="mailto:saulss@fiu.edu">saulss@fiu.edu</a>	Andres Gil, Ph.D. Vice President, Research  Tom Gustafson Director of Government and Transportation Policy	FIU provide professional in-kind support in the form of participation in meetings on project issues and committees; public outreach; and assistance with research and evaluation activities. It will provide technical assistance and research in major research areas in transportation, hurricane adaptation and resiliency, health care, environment, economic and community development.		Florida International University (FIU)

27

**Southeast Florida Regional Partnership  
Consortium Members Agreement Tracking and In-Kind Leverage Summary**

	IN PROCESS	IN PROCESS	IN PROCESS	IN PROCESS	IN PROCESS	IN PROCESS
Consortium Member (August 2010)	Work to be accomplished in support of Southeast Florida's Regional Vision and Blueprint for Economic Prosperity	Key Contact	Contact E-mail	Please confirm your Organization's in-kind contribution over three years in this column.	Board Meeting / Status of Consortium Agreement	
Florida Redevelopment Association	The Florida Redevelopment Association (FRA) will increase the skills and technical expertise of partner organizations through capacity building and knowledge sharing through their Regional Outreach Program. The FRA will coordinate with the Florida League of Cities and the region's Community Redevelopment Associations in the development of the RPSD.	Carol Westmoreland Executive Director	cwestmoreland@fcities.com	\$30,000	Agreement Received	
Housing Leadership Council of Palm Beach County	In-kind support including professional time and services; participation in meetings and on committees; outreach activities; research and evaluation support; technical assistance and training support; use of equipment; and Housing Stimulus and Planning Activities .	Suzanne Cabrera President & CEO	scabrera@hlcpcb.org	\$25,000	9-Jun-11	

28

**Southeast Florida Regional Partnership  
Consortium Members Agreement Tracking and In-Kind Leverage Summary**

Consortium Member (August 2010)	Work to be accomplished in support of Southeast Florida's Regional Vision and Blueprint for Economic Prosperity	Key Contact	Contact E-mail	Please confirm your Organization's in-kind contribution over three years in this column.	IN PROCESS	Board Meeting / Status of Consortium Agreement
Indian River County	Indian River County will provide in-kind support in the form of participation in meetings and on committees; project outreach; technical assistance. Additional projects in support of the grant include update of the utilities master plan, beach renourishment environmental studies and monitoring, and wetlands impact analysis.	Phil Matson Director	pmatson@ircgov.com	\$25,000	IN PROCESS	16-Aug-11
Indian River Metropolitan Planning Organization	In-kind support including professional time and services; participation in meetings and on committees; outreach activities; research and evaluation support; technical assistance and training support; use of equipment, and preparation of flyers and marketing materials.	Phil Matson MPO Director Brian Freeman Transportation Planner	pmatson@ircgov.com bfreeman@ircgov.com	\$75,000	IN PROCESS	10-Aug-11

**Southeast Florida Regional Partnership  
Consortium Members Agreement Tracking and In-Kind Leverage Summary**

		IN PROCESS	IN PROCESS	IN PROCESS
Consortium Member (August 2010)	Work to be accomplished in support of Southeast Florida's Regional Vision and Blueprint for Economic Prosperity	Key Contact	Contact E-mail	Please confirm your Organization's in-kind contribution over three years in this column.
Liberty City Community Revitalization Trust	In-kind support including professional time and services; participation in meetings and on committees; outreach activities and technical assistance.	Elaine Black, President and CEO	eblack@ci.miami.fl.us	Agreement Received
Martin County	Martin County will assist in the development of the RPSD through its participation in meetings and on project issue committees.	Taryn Kryda County Administrator Nikki Van Vonno, Growth Management Department Director	tkryzda@martin.fl.us nikkiv@martin.fl.us	\$10,000 \$61,908 12-Jul-11
Martin Metropolitan Planning Organization (MPO)	In-kind support including outreach activities; research and evaluation activities; and technical assistance.	Beth Beltran MPO Director	mbeltran@martin.fl.us	Awaiting confirmation 19-Sep-11
Miami Dade College	In-kind professional time and services; support staff and facilities; project outreach via broadcast facilities; and project promotion via college website.	Rolando Montoya, College Provost Lula Rodriguez,	rmontova@mdc.edu mbailey2@mdc.edu pbartels@miamidade.edu	\$26,142 Agreement Received

30

**Southeast Florida Regional Partnership  
Consortium Members Agreement Tracking and In-Kind Leverage Summary**

	IN PROCESS	IN PROCESS	IN PROCESS	IN PROCESS	IN PROCESS	IN PROCESS
Consortium Member (August 2010)	Work to be accomplished in support of Southeast Florida's Regional Vision and Blueprint for Economic Prosperity	Key Contact	Contact E-mail	Please confirm your Organization's in-kind contribution over three years in this column.	Board Meeting / Status of Consortium Agreement	
Miami-Dade County	Support includes professional time and services; technical assistance on climate change mitigation and adaptation issues; and research and evaluation activities. Contributions include strategic planning to remove impediments to fair housing in Miami-Dade County; develop stormwater master plans; and enhance resiliency to the impacts of climate change and sea level rise.	Eric Silva, Chief of Community Planning, Department of Planning and Zoning	silvae@miamidade.gov grined@miamidade.gov mclif@miamidade.gov	\$25,000	Committee Meeting 7/19/2011 and Full BOCC on Sept 1, 2011	
Miami-Dade Expressway Authority (MDX)	Leveraged resources including investing over \$1 million per year in transportation planning developing future expansions and improvements to the MDX roadway system.	Javier Rodriguez, Executive Director Mayra Diaz, Planning Manager	jrodriguez@mdx-wav.com mdiaz@mdxway.com	\$172,800		14-Jul-11



**Southeast Florida Regional Partnership  
Consortium Members Agreement Tracking and In-Kind Leverage Summary**

	IN PROCESS	IN PROCESS	IN PROCESS	IN PROCESS	IN PROCESS
Consortium Member (August 2010)	Work to be accomplished in support of Southeast Florida's Regional Vision and Blueprint for Economic Prosperity	Key Contact	Contact E-mail	Please confirm your Organization's In-kind contribution over three years in this column.	Board Meeting / Status of Consortium Agreement
Miami-Dade Metropolitan Planning Organization	In-kind staff participation in meeting and on project committees; and research and evaluation activities (Planning funds from FHWA and FTA 5303).	Irma San Roman, Acting Director  Susan Schreiber, Transportation Systems Analyst	<a href="mailto:irm@miamidade.gov">irm@miamidade.gov</a> <a href="mailto:wilson@miamidade.gov">wilson@miamidade.gov</a> <a href="mailto:rcf@miamidade.gov">rcf@miamidade.gov</a> <a href="mailto:susans@miamidade.gov">susans@miamidade.gov</a>	\$25,000	21-Jul-11
Monroe County	In-kind professional time and services; support staff and facilities; in addition Monroe County will engage in infrastructure improvements, community and economic development, energy efficiency, environmental justice, and green building projects.	Roman Gastesi County Administrator  Townswley Schwab Director, Dept of Planning and Environmental Resources  Jane Tallman Florida Keys Senic Highway Coordinator	<a href="mailto:rgastesi@monroecounty-fl.gov">rgastesi@monroecounty-fl.gov</a> <a href="mailto:cvt@monroecounty-fl.gov">cvt@monroecounty-fl.gov</a> <a href="mailto:connie@monroecounty-tallman-fl.gov">connie@monroecounty-tallman-fl.gov</a> <a href="mailto:iane@monroecounty-fl.gov">iane@monroecounty-fl.gov</a> <a href="mailto:townswley@monroecounty-fl.gov">townswley@monroecounty-fl.gov</a>	\$10,000	20-Jul-11

32

**Southeast Florida Regional Partnership  
Consortium Members Agreement Tracking and In-Kind Leverage Summary**

	IN PROCESS	IN PROCESS	IN PROCESS	IN PROCESS	IN PROCESS	IN PROCESS
Consortium Member (August 2010)	Work to be accomplished in support of Southeast Florida's Regional Vision and Blueprint for Economic Prosperity	Key Contact	Contact E-mail	Please confirm your Organization's in-kind contribution over three years in this column.	Board Meeting / Status of Consortium Agreement	
Palm Beach County	Participation in meetings and technical assistance in economic development and competitiveness, the coordination of policies and leverage investment, support of existing communities, and enhancement of community resiliency to the impacts of climate change and sea level rise.	Robert Weisman, County Administrator Verdenia Baker, Deputy County Administrator Sherry Howard, Director, Economic Development Office Barbara Alterman, Planning, Zoning & Building	rweisman@pbcgov.org vbaker@pbcgov.org showard@pbcgov.org balterman@pbcgov.org	\$24,960	Email received Board Agenda July	
Palm Beach Metropolitan Planning	Participation in meetings and on project issue committees, research and evaluation activities.	Randy Whitfield, Executive Director	rwhitfie@pbcgov.org	\$25,000	Agreement Received	

**Southeast Florida Regional Partnership  
Consortium Members Agreement Tracking and In-Kind Leverage Summary**

	IN PROCESS	IN PROCESS	IN PROCESS	IN PROCESS	IN PROCESS	IN PROCESS
Consortium Member (August 2010)	Work to be accomplished in support of Southeast Florida's Regional Vision and Blueprint for Economic Prosperity	Key Contact	Contact E-mail	Please confirm your Organization's in-kind contribution over three years in this column.	Board Meeting / Status of Consortium Agreement	
Regional Business Alliance	The Regional Business Alliance will provide in-kind support in the form of participation in meetings on project issues and committees; outreach to Chief Executive Officers (business community outreach); issue forums; and assistance with research and evaluation activities.	Ralph Marrinson Chair	rmarrinson@marrinson.com	\$25,000	Agreement Received	
South Florida Cultural Consortium	The South Florida Cultural Consortium will participate in meetings and provide technical assistance in civic engagement, communications, community gardening, data collection and research including community needs assessments, education, the development of educational tools and strategies. Specific studies include a Local Arts Index study and a Regional Arts and Economic Prosperity Study.	Michael Spring Chairman	ms4@miamidade.gov	Awaiting confirmation	Aug-11	

34

**Southeast Florida Regional Partnership  
Consortium Members Agreement Tracking and In-Kind Leverage Summary**

	IN PROCESS	IN PROCESS	IN PROCESS	IN PROCESS	IN PROCESS
Consortium Member (August 2010)	Work to be accomplished in support of Southeast Florida's Regional Vision and Blueprint for Economic Prosperity	Key Contact	Contact E-mail	Please confirm your Organization's in-kind contribution over three years in this column.	Board Meeting / Status of Consortium Agreement
South Florida Regional Planning Council (SFRPC)	In-kind support via donation of professional time and services; participation in meetings and committees; outreach and coordination with local partner organizations/governments; participate in meetings and dedicate personnel to the development and implementation of the Regional Plan for Sustainable Development.	Jack Osterholt Executive Director Isabel Cosio Carballo Director of Public Affairs	<a href="mailto:josterholt@sfrpc.com">josterholt@sfrpc.com</a> <a href="mailto:isabelc@sfrpc.com">isabelc@sfrpc.com</a> <a href="mailto:rogburn@sfrpc.com">rogburn@sfrpc.com</a>	\$48,000	Agreement Received
South Florida Regional Transportation Authority (SFRTA)	In-kind support including participation in meetings, and outreach and evaluation activities leveraging FTA 5307.	Joseph Giulietti Executive Director Lynda Westin	<a href="mailto:giulietti@sfrta.fl.gov">giulietti@sfrta.fl.gov</a> <a href="mailto:westin@sfrta.fl.gov">westin@sfrta.fl.gov</a> <a href="mailto:stephensi@sfrta.fl.gov">stephensi@sfrta.fl.gov</a> <a href="mailto:crossw@sfrta.fl.gov">crossw@sfrta.fl.gov</a>	\$31,680	24-Jun-11
St. Lucie County	Three (3) Projects that will support and complement the HUD project: Western Lands Study; Green Corridor Charrette; and Wetlands Study. Participation in meetings and technical assistance.	Mark Satterlee Planning Director Britton De Witt Senior Planner	<a href="mailto:satterleem@stlucieco.org">satterleem@stlucieco.org</a>	\$0	14-Jun-11

37

**Southeast Florida Regional Partnership  
Consortium Members Agreement Tracking and In-Kind Leverage Summary**

		IN PROCESS	IN PROCESS	IN PROCESS
Consortium Member (August 2010)	Work to be accomplished in support of Southeast Florida's Regional Vision and Blueprint for Economic Prosperity	Key Contact	Contact E-mail	Please confirm your Organization's in-kind contribution over three years in this column.
St. Lucie Transportation Planning Organization	In-kind support including professional time and services; participation in meetings and on committees; outreach activities; research and evaluation support; technical assistance; and computers and equipment.	Peter Buchwald MPO Director  Marceia Lathou	buchwaldp@stlucieco.org lathoum@stlucie.org	16-Jun-11
St. Thomas University	Planning time for production of "bottom up model" of community leadership development; University-School district limited income and minority study development including amount of scholarship funding; provision of community university meeting space; contribution of time by ARA Dean for Community-University partnership; participation in Partnership meetings.	Reverend Monsignor Franklyn M. Casale  John Carpenter, PhD, Dean  Yi Ying Chiang	icarpenter@stu.edu fcasale@stu.edu ychiang@stu.edu	Awaiting confirmation
				Email dated 6/22/11 received - should be received by June 28, 2011

36

**Southeast Florida Regional Partnership  
Consortium Members Agreement Tracking and In-Kind Leverage Summary**

	IN PROCESS	IN PROCESS	IN PROCESS	IN PROCESS	IN PROCESS	IN PROCESS
Consortium Member (August 2010)	Work to be accomplished in support of Southeast Florida's Regional Vision and Blueprint for Economic Prosperity	Key Contact	Contact E-mail	Please confirm your Organization's in-kind contribution over three years in this column.	Board Meeting / Status of Consortium Agreement	
The Resource Innovation Group	In-kind support including professional time and services; technical assistance on climate change mitigation and adaptation issues; and research and evaluation activities.	Bob Doppelt Executive Director  Steve Adams, Director, Climate Adaptation & Preparedness Program	<a href="mailto:bob@trig-cli.org">bob@trig-cli.org</a> <a href="mailto:escadams@uoregon.edu">escadams@uoregon.edu</a>	Awaiting confirmation	In process	
Treasure Coast Regional Planning Council (TCRPC)	The Treasure Coast Regional Planning Council will reach out to, and coordinate with, partner organizations and local governments in Palm Beach, Martin, St. Lucie, and Indian River counties to support the development of the RPSD. The TCRPC will participate in meetings on project issues and committees and dedicate personnel to the development and implementation of the RPSD.	Michael Busha Executive Director  Kim Delaney Growth Management Director	<a href="mailto:mbusha@tcrpc.org">mbusha@tcrpc.org</a> <a href="mailto:kdelaney@tcrpc.org">kdelaney@tcrpc.org</a> <a href="mailto:gvaday@tcrpc.org">gvaday@tcrpc.org</a>	\$100,000	Agreement Received	

37

**Southeast Florida Regional Partnership  
Consortium Members Agreement Tracking and In-Kind Leverage Summary**

Consortium Member (August 2010)	Work to be accomplished in support of Southeast Florida's Regional Vision and Blueprint for Economic Prosperity	Key Contact	Contact E-mail	Please confirm your Organization's in-kind contribution over three years in this column.	Board Meeting / Status of Consortium Agreement
University of Florida Shimberg Center for Housing Studies	The Shimberg Center will provide in-kind support in the form of participation in meetings on project issues and committees and provide information and analysis on: (1) preservation of public and assisted housing, especially risk assessment in relation to TOD's, employment centers, neighborhood stabilization and gentrification; (2) housing need and cost burden.	William O'Dell Acting Director	billo@ufl.edu aray@ufl.edu	Awaiting confirmation	Email received June 17, 2011 - In process
Urban Land Institute (ULI) Southeast Florida / Caribbean District Council	In-kind support of volunteer time from ULI members in various work groups and convenings, technical assistance and administrative support to Executive Committee	Carla Coleman Executive Director	carla.coleman@uli.org	\$95,000	Agreement Received
West Palm Beach Housing Authority	In-kind support including participation in meetings and on project issue committees particularly in the area of promoting equitable, affordable housing. Will assist in outreach to, and engagement of the region's housing authorities in the development of the regional housing needs assessment and regional plan.	Laurel Robinson Executive Director	lrobinson@wpbha.org	Awaiting confirmation	Requested