

Date: December 6, 2011

To: Honorable Chairman Joe A. Martinez
and Members, Board of County Commissioners

Agenda Item No. 3(A)(1)

From: Carlos A. Gimenez
County Mayor 

Resolution R-1032-11

Subject: Award of IBM KidSmart Early Learning Program Grant to the Miami-Dade Public Library System

Recommendation

It is recommended that the Board approve the accompanying resolution ratifying the submission and acceptance of a grant application to the IBM KidSmart Early Learning Program for the acceptance of 75 KidSmart Young Explorer computer workstations (valued at \$187,500) and authorizing the County Mayor or County Mayor's designee to receive equipment and execute contracts, agreements, and amendments, after approval by the County Attorney, as required by program guidelines.

Scope

The scope of the project is Countywide. The KidSmart computer workstations will be installed at each branch library facility.

Fiscal Impact/Funding Source

This grant will provide capital equipment that will be used to implement the proposed project and does not require matching funds. There will be no impact on future budgetary impact.

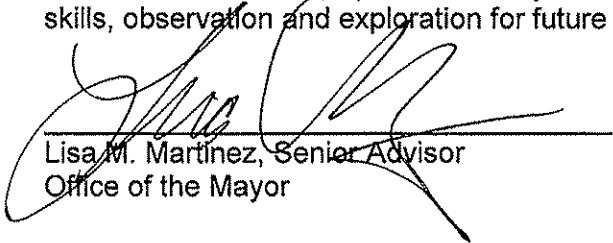
Track Record/Monitor

The Library Department will be responsible for the inventory and installation of all equipment. The project manager is Sylvia Mora-Ona, Library Assistant Director.

Background

In 2009, the Library Department initiated the Reading Ready program to engage parents, caregivers, educators and the broader community and to help ensure that young children gain the skills they need for success in school. Similarly, IBM developed the KidSmart program in 1998 to help reduce the digital divide, especially in urban areas, where it was becoming apparent that children from less affluent backgrounds needed access to specialized technology tools and educational materials to better prepare them to enter school.

The donation and subsequent installation of KidSmart Young Explorer computers will provide an additional component to Reading Ready and other early learning initiatives. The KidSmart Young Explorer workstations will allow the children and their parents or caregivers to experience independent and interactive learning to develop reading, math and science skills as well as develop a vast array of learning tools such as problem solving, thinking skills, observation and exploration for future achievement in school.


Lisa M. Martinez, Senior Advisor
Office of the Mayor



MEMORANDUM

(Revised)

TO: Honorable Chairman Joe A. Martinez
and Members, Board of County Commissioners

DATE: December 6, 2011

FROM: R. A. Cuevas, Jr.
County Attorney

SUBJECT: Agenda Item No. 3(A)(1)

Please note any items checked.

- "3-Day Rule" for committees applicable if raised
- 6 weeks required between first reading and public hearing
- 4 weeks notification to municipal officials required prior to public hearing
- Decreases revenues or increases expenditures without balancing budget
- Budget required
- Statement of fiscal impact required
- Ordinance creating a new board requires detailed County Manager's report for public hearing
- No committee review
- Applicable legislation requires more than a majority vote (i.e., 2/3's ____, 3/5's ____, unanimous ____) to approve
- Current information regarding funding source, index code and available balance, and available capacity (if debt is contemplated) required

Approved _____ Mayor
Veto _____
Override _____

Agenda Item No. 3(A)(1)
12-6-11

RESOLUTION NO. R-1032-11

RESOLUTION RATIFYING THE SUBMISSION AND ACCEPTANCE OF A GRANT APPLICATION TO THE IBM KIDSMART EARLY LEARNING PROGRAM FOR THE ACCEPTANCE OF 75 KIDSMART YOUNG EXPLORER COMPUTERS WORKSTATIONS (VALUED AT \$187,500) TO BE USED BY THE MIAMI-DADE PUBLIC LIBRARIES; AND AUTHORIZING THE COUNTY MAYOR OR COUNTY MAYOR'S DESIGNEE TO RECEIVE AND EXPEND FUNDS AND EQUIPMENT, EXECUTE CONTRACTS, AGREEMENTS, AND AMENDMENTS, AFTER APPROVAL BY THE COUNTY ATTORNEY, AS REQUIRED BY PROGRAM GUIDELINES

WHEREAS, this Board desires to accomplish the purposes outlined in the accompanying memorandum, a copy of which is incorporated herein by reference,

NOW, THEREFORE, BE IT RESOLVED BY THE BOARD OF COUNTY COMMISSIONERS OF MIAMI-DADE COUNTY, FLORIDA, that this Board ratifies the submission of a grant application to the IBM KidSmart Early Learning Program for the acceptance of 75 KidSmart Young Explorer computers (valued at \$187,500) and authorizing the County Mayor or County Mayor's designee to receive equipment; and execute contracts, agreements, and amendments, after approval by the County Attorney, as required by program guidelines.

The foregoing resolution was offered by Commissioner **José "Pepe" Diaz**, who moved its adoption. The motion was seconded by Commissioner **Rebeca Sosa** and upon being put to a vote, the vote was as follows:

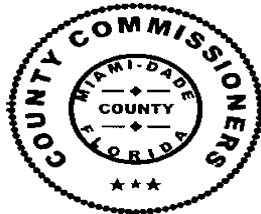
Joe A. Martinez, Chairman	aye		
Audrey M. Edmonson, Vice Chairwoman	aye		
Bruno A. Barreiro	aye	Lynda Bell	aye
Esteban L. Bovo, Jr.	aye	Jose "Pepe" Diaz	aye
Sally A. Heyman	aye	Barbara J. Jordan	aye
Jean Monestime	aye	Dennis C. Moss	aye
Rebeca Sosa	aye	Sen. Javier D. Souto	aye
Xavier L. Suarez	absent		

The Chairperson thereupon declared the resolution duly passed and adopted this 6th day of December, 2011. This resolution shall become effective ten (10) days after the date of its adoption unless vetoed by the Mayor, and if vetoed, shall become effective only upon an override by this Board.

MIAMI-DADE COUNTY, FLORIDA
BY ITS BOARD OF
COUNTY COMMISSIONERS

HARVEY RUVIN, CLERK

By: **Christopher Agrippa**
Deputy Clerk



Approved by County Attorney as
to form and legal sufficiency.

A handwritten signature in black ink, appearing to be "Richard Seavey".

Richard Seavey

KidSmart Early Learning Program Grant

Organization: Miami-Dade Public Library System
Address 101 W Flagler Street, Miami, FL 33130
Project Manager: Elizabeth Pearson
Title: Children Services Supervisor
Telephone: 305-375-8256
Fax: 305-372-6387
Email: pearsons@mdpls.org

1. How does this donation align with the Miami-Dade Public Library System's Early Learning Strategy?

Prompted by recent studies regarding early learning child development, the Miami-Dade Public Library System which has always had a strong commitment in this area has developed and implemented several new and innovative strategies.

- A study conducted by the Florida Kindergarten Readiness Screener shows that in Miami-Dade County, children, ages 0-5 years, are considered moderate to high risk in the area of Alphabet Recognition; 40.7% as moderate/high risk in the area of Sound Recognition (phonics), and; 14% are identified as not being Classroom Ready.
- Research demonstrates a direct link between the development of early literacy skills and success in kindergarten, elementary school and beyond.
- Libraries are ideally suited to assist their youngest patrons in this process by providing the environment and the resources necessary for learning.
- According to the findings of the National Early Literacy Panel (NELP), shared-reading practices—a parent reading a picture book with a toddler or a teacher reading a book to a class of preschoolers—are often recommended as the single most important thing adults can do to promote the emergent literacy skills of young children.

5

With these studies in hand, MDPLS in conjunction with early learning literacy consultants, began a two year project to create **READING READY**, an initiative which engages parents, caregivers, educators and the broader community to help ensure that young children gain the skills they need for success in school. Prior to the launch of the program in 2009, several age-appropriate brochures were developed and intensive training was given to the 800 librarians throughout the system so that all staff, even if they don't conduct Reading Ready workshops themselves, understands the program, its process and especially its importance. Today, the Library conducts Reading Ready workshops and has created age-appropriate kits to be checked out with books, a CD, and even a puppet to help them teach children at home.

The donation of KidSmart Young Explorer computers is important because it provides the missing component to Reading Ready and to all of the Library's early learning initiatives. Though MDPLS has a strong commitment to early literacy through the written word, there is no organized initiative for technological literacy nor does the Library have age appropriate software or hardware.

- The addition of the Young Explorer units allows the child and their parents or caregivers to experience independent and interactive learning to develop reading, math and science skills as well as develop a vast array of learning tools such as problem solving, thinking skills, observation and exploration for future achievement in school.
- Also due to the small penetration of at-home computers in Miami-Dade County, the IBM Young Explorer computers and software levels the technological playing field for many Miami-Dade County young residents.

- Having software in Spanish provides a tremendous boost to this program as so many of the parents of young children do not speak English.

2. How will KidSmart units be integrated into MDPLS early learning programs to support student achievement?

As previously explained, MDPLS staff has received extensive training in preparing parents and caregivers of young children to identify the skills necessary for reading readiness. The Young Explorer computers will be used to extend the child's ability to practice some of these skills.

3. How will MDPLS support professional development to continue to keep teachers engaged in early childhood education?

- MDPLS will incorporate Young Explorer training into its ongoing staff training program.
- Parents and Caregivers will be trained through the Reading Ready program.
- Educators will be trained through the Library's annual Art of Storytelling campaign in which workshops are held for educators to teach them the most current trends in early childhood literacy.

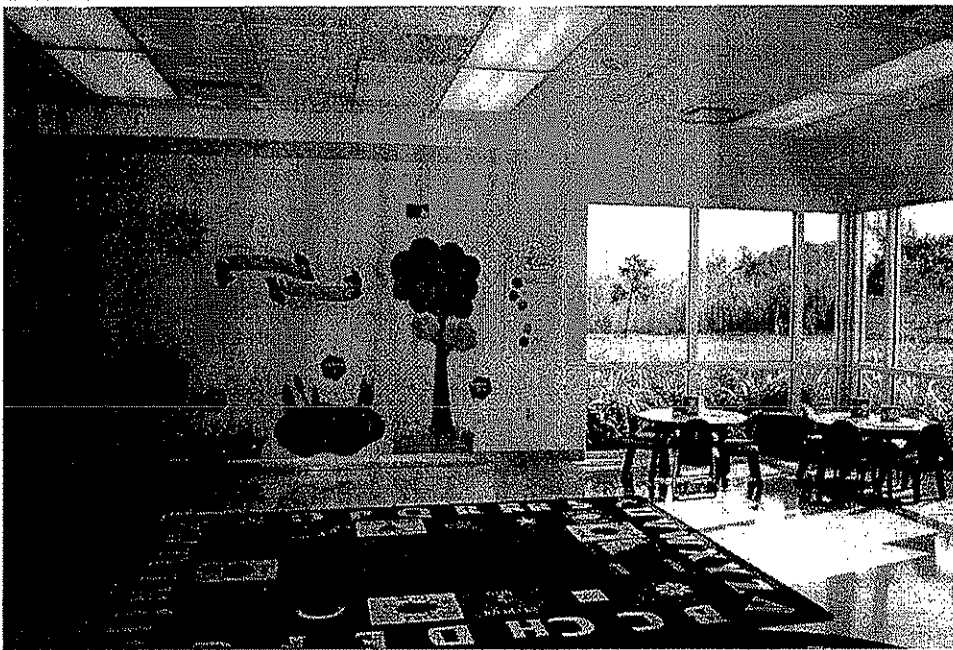
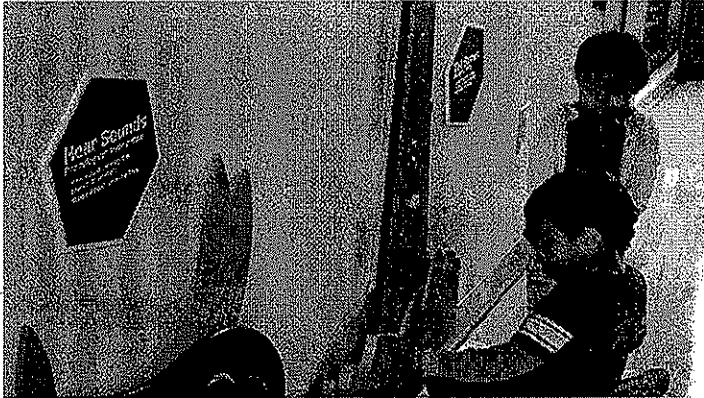
4. Description of current MDPLS early childhood education programs.

In support of early learning and the Reading Ready program, the Miami-Dade Public Library System offers:

- Training to all MDPLS staff on early literacy along with specialized training for Children's staff.
- Weekly story times (Baby, Toddler, Preschool, and Family) at all branches exposing the parents and caregivers to the 6 Early Literacy Skills.

7

- Physical Spaces at selected libraries equipped with interactive and play-to-learn tools for use by children along with their parents/caregivers.



- Collections of early literacy books, including parenting books, board books, picture books, DVDs, CDs and other materials.
- Programs designed to highlight early learning through story times, crafts, play and parent education.
- **Reading Ready** Literacy Kits which are available for home use and include books, music activities and parent/caregiver information booklet.

- Speakers available to discuss with parents, child care providers, service providers and other interested parties about early literacy skills.
- Outreach Programs/Activities and Partnerships with Community Groups.
- Public Information: Website and Printed Materials.

5. Describe how the donation of Young Explorer units will strengthen MDPLS early childhood education.

MDPLS believes that children learn in various ways: through play; through age-appropriate educational experiences; when parents/caregivers are a vital part of the process; in a collaborative environment; from each other, parents/caregivers, educators and dedicated library staff.

The Young Explorer computers fit this model perfectly. They are part play and part education. They can be used alone or with an adult. They provide an early technological experience which is especially important in today's educational world. Children ages 3-7 years old are able to have access to both age and skill appropriate hardware and software. They can be used in multiple language.

Perhaps most important, Young Explorer computers provide a natural progression from the story-time activities to learning activities that support early childhood learning in a very unique way.