



ALLIANCE FOR HUMAN SERVICES  
**Executive Summary**  
Miami-Dade County Human Services  
Progress Report for 2008

An Update to the Social Services Master Plan 2005-2007  
Building a Livable Community for ALL



## We recognize and gratefully appreciate the funding and support from our Board members and Miami-Dade County

### Board of Directors of the Alliance for Human Services

**Gepsie Metellus, Chairperson**

Sant La Haitian Neighborhood Center

**Evelio Torres, Vice Chair**

Early Learning Coalition of Miami-Dade/Monroe

**David Raymond, Secretary/Treasurer**

Miami-Dade County Homeless Trust

**Bryan K. Finnie, Immediate Past President**

**Rev. Linda Freeman, Advisory Committee Chair**

Trinity Church

**Rhea Gray**

Agency for Health Care Administration

**Max B. Rothman**

Alliance for Aging, Inc.

**Honorable Joseph P. Farina**

Chief Judge, Eleventh Judicial Court

**Pedro G. Hernandez**

City of Miami

**Helene J. Good**

CCDH, Inc.

**Ruth Shack**

Dade Community Foundation

**Alan Abramowitz**

Florida Department of Children and Families

**Isabel Afanador**

Florida Department of Juvenile Justice

**Rep. Juan C. Zapata**

Florida House of Representatives

**Tom Zamorano**

Florida Immigrant Advocacy Center

**Steven Marcus, Ed.D.**

Health Foundation of South Florida

**Daniella Levine**

Human Services Coalition

**David Saltman**

**Juan J. Martinez**

John S. & James L. Knight Foundation

**George Burgess**

Miami-Dade County

**Lillian Rivera**

Miami-Dade County Health Department

**Rudolph Crew**

Miami-Dade County Public Schools

**Marvin O'Quinn**

Public Health Trust

**Roderick "Rick" Beasley**

South Florida Workforce

**Rev. Walter Richardson**

Sweet Home M.B. Church

**Modesto E. Abety**

The Children's Trust

**David Lawrence**

The Early Childhood Initiative Foundation, Inc.

**Harve A. Mogul**

United Way of Miami-Dade



### Miami-Dade Board of County Commissioners

**Carlos Alvarez, Mayor**

**Bruno A. Barreiro, Chairperson, District 5**

**Barbara J. Jordan, Vice-Chairperson, District 1**

**Dorrin D. Rolle, District 2**

**Audrey Edmonson, District 3**

**Sally A. Heyman, District 4**

**Rebeca Sosa, District 6**

**Carlos A. Jimenez, District 7**

**Katy Sorenson, District 8**

**Dennis C. Moss, District 9**

**Javier D. Souto, District 10**

**Joe A. Martinez, District 11**

**Jose "Pepe" Diaz, District 12**

**Natacha Seijas, District 13**

# Introduction

Welcome to the Executive Summary of the Miami-Dade County Human Services Progress Report for 2008 – An Update to the Social Services Master Plan 2005-2007 (“SSMP Update”). This document summarizes the information in the report. It continues the theme of “Building a Livable Community for ALL”, and is intended to refine and focus on community outcomes and to establish a baseline from which to measure progress towards achieving goals and outcomes. It also identifies priority areas upon which to guide policy, advocacy, funding, and the strategic development of service delivery in Miami-Dade County.

## Who We Are . . .

As the community-wide planning agency for human services in Miami-Dade County, the Alliance for Human Services develops and updates the countywide Social Services Master Plan. The Alliance Board of Directors includes all major funders of health and social services, as well as representatives from the business community, service providers, consumers, caregivers, advocates and faith-based organizations.

## Our Mission . . .

Improving the Quality of Life for Miami-Dade County Residents through Community Planning, Partnerships, Coordination of Resources, and Community Involvement.

## Our Guiding Principles . . .

- A shared vision of the needs of Miami-Dade County residents
- Improved coordination, collaboration and communication across systems
- Increased accountability for investments (outcomes versus workload measures)
- Promoting synergy through mutual support and networking
- Leveraging resources across systems
- Promoting partnerships between the public and private sectors
- Ensuring flexibility to respond to new or emerging community needs
- Improving outcomes for consumers and caregivers
- Improving the quality of life for all Miami-Dade County residents

## The Role of the SSMP Update for Miami-Dade in Supporting Our Mission

The SSMP Update is a comprehensive overview of health and social services goals, outcomes, indicators, and the needs identified by human services advocates, providers, funders, clients, and communities in Miami-Dade County. It presents a current picture of the status of human services delivery in the community, allowing assessment of the effectiveness of human services. The data in the SSMP Update provides direction and permits evidence-based strategic adjustments to service delivery to meet better the needs of Miami-Dade County residents.

The SSMP Update is an example of goal-oriented community indicator tracking. Globally, there is recognition that broad social and economic problems need community-wide, cross-sector/system approaches and solutions. Goal-oriented community indicator tracking highlights the need to strengthen government agencies, private service providers, civil society organizations, and communities through participatory approaches, integrated governance, and social inclusion.

**“Vision without action is useless. But action without vision does not know where to go or why to go there. Vision is absolutely necessary to motivate action. More than that, vision when widely shared and firmly kept in sight, brings into being new systems.” Meadows et al. (1992). *Beyond the Limits: Global Collapse or a Sustainable Future?***

## Who should use the SSMP Update

The SSMP Update should be used by county government, funding agencies, non-profit organizations, direct-service providers and other community-based organizations as a planning tool for programs and policy action. It should also be used to support and encourage collaborative initiatives and partnerships.

**Community Outcome:**  
The impact on people of service delivery in terms of *community status change*.

## Planning for Results: The Focus on Outcomes

This update does not focus on programmatic outcomes but on outcomes applicable to the community as a whole. The document defines outcomes as “the impact of service delivery on people and communities, and the resulting **community status change**.”

Outcomes here do not refer to the types of services provided (outputs) or results at the program level (although this information forms part of the wider picture), but what those services and programs, in conjunction with the other systems (economic, transportation, housing, etc.), should achieve in order to create a livable community for all. The outcomes represent a shared view of the results desired in Miami-Dade County and their indicators are designed to be measurable and realistic in order to allow us to track progress towards our goals.

Ultimately, the **outcome** of this SSMP Update for Miami-Dade County is to provide measures that can evaluate the effectiveness of human services delivery. The tracking of indicators hopefully results in a more coordinated, unified, and complementary services system that is simple, direct, and user friendly for the client.

# Livable Communities

Building a Livable Community for ALL recognizes that human services cannot operate in a vacuum; there are other institutions and factors affecting the quality of life. Miami-Dade County's residents should be able to live and work in a culturally-sensitive, safe and stable environment. To do this, we must be able to earn a wage that will support the basic needs of our families. To earn that livable wage, we must have sufficient work skills and training. To attain those skills, we must be educated. To be educated, we must be healthy enough to go to school and learn. To be healthy, we must have access to healthcare and medical information. To stay healthy, we must have shelter that is safe, sanitary and affordable. To be able to afford that housing, we must have a livable wage. It is all circular, and our vision of human services must reflect this reality of interconnectedness. Livable Communities is the cross-system application of this principle. As such, this section of the SSMP Update should be read in the context of the goals, outcomes, and indicators discussed in the other sections of the update, each of which relates to a human service cluster or area of focus.

## Vision

**A prosperous and dynamic Miami-Dade County where residents are able to live, work and play in safety; where basic needs are met; where residents are healthy; where there is appreciation of and sensitivity towards the diversity of our community; where individuals can fulfill their potential to become productive citizens and where those least able to look after themselves are cared for**

## Recommendations

**Overall, the data on Miami-Dade County as a "Livable Community" reflects the needs for . . .**

- **greater investment in education and public transportation;**
- **building a robust economy that allows for all persons in the county to increase earned income**
- **creating affordable housing**
- **maintaining a safe and healthy environment**



# Livable Communities At-A-Glance

Indicator	Area	Baseline	Calendar Year			
		2004	2005	2006	2007	2008
Median Family Income	Miami-Dade County (MDC)	\$40,927	\$42,499	\$46,731	\$49,894	n/a
Average Monthly Household Food Stamp Usage	MDC	169,905	172,456	172,128	176,837	n/a
Median Home Price Index	MDC	\$193,906	\$246,500	\$308,500	\$318,100	n/a
	Florida	\$149,291	\$189,500	\$230,600	\$230,400	n/a
	United States	\$151,366	\$167,500	\$185,200	\$194,300	n/a
Cost of Rent (Monthly)	MDC	\$777	\$816	\$891	\$967	n/a
	Florida	\$766	\$809	\$872	\$925	n/a
	United States	\$694	\$728	\$763	\$789	n/a
% Commuting to work alone by car, truck or van	MDC	78.4%	77.6%	77.0%	77.8%	n/a
% Commuting to work in carpool by car, truck or van	MDC	9.4%	9.8%	9.5%	9.1%	n/a
% Commuting to work by public transportation	MDC	4.9%	5.5%	6.0%	5.3%	n/a
% Commuting to work by walking	MDC	2.0%	2.2%	1.9%	2.2%	n/a
% Worked from home	MDC	3.6%	2.6%	3.4%	3.5%	n/a
% of population over 25 with less than 9th grade education	MDC	11.7%	12.1%	12.7%	12.3%	n/a
% of population over 25 with 9th to 12th grade, no diploma	MDC	11.4%	11.5%	11.1%	10.8%	n/a
% of population over 25 that is a high school graduate (includes equivalency)	MDC	27.8%	27.1%	27.6%	28.3%	n/a
% of population over 25 with associates degree	MDC	7.4%	8.1%	8.0%	8.3%	n/a
% of population over 25 with bachelors degree	MDC	14.9%	15.8%	16.8%	16.9%	n/a
% of population over 25 with graduate or professional degree	MDC	10.0%	9.4%	9.6%	9.2%	n/a
Unemployment Rate	MDC	5.5%	4.5%	3.8%	3.8%	n/a
	Florida	4.7%	3.9%	3.4%	4.0%	n/a
	United States	5.5%	5.1%	4.6%	4.6%	n/a
Median earnings of persons with less than a high school diploma	MDC	\$15,110	\$16,097	\$16,379	\$16,759	n/a
Median earnings of persons with a high school diploma (includes equivalency)	MDC	\$20,810	\$21,483	\$21,729	\$22,836	n/a
Median earnings of persons with some college	MDC	\$27,576	\$29,195	\$30,362	\$31,422	n/a
Median earnings of persons with bachelors degree	MDC	\$34,694	\$37,384	\$37,778	\$39,554	n/a
Median earnings of persons with graduate or professional degree	MDC	\$46,321	\$54,597	\$51,237	\$57,999	n/a
Crime rate (violent and nonviolent crime) per 100,000 people	MDC	6,742.3	6,234.0	5,964.1	6,297.0	n/a
# of vehicle fatalities	MDC	318	336	347	310	n/a
# of vehicle injuries	MDC	37,955	37,879	31,030	30,637	n/a



# Basic Needs (*Poverty and Hunger*)

## Vision

Individuals and families are self-sufficient and achieve economic security

## Goals (What we expect to happen ...)

1. Residents will have access to public benefits and legal services
2. Residents will increase their earned income
3. Residents will see an increase in food security

## Recommendations for priorities for funding, policy and strategic development for Basic Needs are ...

- Education and outreach on eligibility to public benefits
- Advocacy for wage policies to support economic independence of residents
- Increased food distribution



# Basic Needs At-A-Glance

Indicator	Area	Baseline	Calendar Year			
		2004	2005	2006	2007	2008
# of individuals receiving SSI	Miami-Dade County (MDC)	38,834	48,297	45,966	44,069	n/a
# of individuals receiving Cash Public Assistance	MDC	16,372	19,619	18,235	11,705	n/a
Tax returns receiving EITC (Tax Year 2003-2005)	MDC	306,102	305,797	n/a	n/a	n/a
	Florida	1,556,383	1,569,804	n/a	n/a	n/a
Percent of tax returns receiving EITC	MDC	30.3%	30.1%	n/a	n/a	n/a
	Florida	19.9%	19.8%	n/a	n/a	n/a
Average EITC return	MDC	\$1,913.44	\$1,955.90	n/a	n/a	n/a
	Florida	\$1,840.47	\$1,897.41	n/a	n/a	n/a
Section 8 Voucher	MDC	13,994	14,079	14,322	14,443	n/a
Section 8 waiting list (general)	MDC	48,057	47,996	41,386	39,444	n/a
Section 8 waiting list (elder)	MDC	8,635	15,051	5,806	8,745	n/a
Section 8 waiting list (disabled)	MDC	5,824	6,407	3,757	5,160	n/a
# of low income public housing units	MDC	10,250	9,180	9,280	9,265	n/a
# of low income in public housing waiting list	MDC	26,890 (gen) 1,258 (eld) 1,380 (dis)	13,922 (gen) 1,451 (eld) 731 (dis)	39,772 (gen) 4,737 (eld) 3,155 (dis)	32,364 (gen) 4,927 (eld) 3,625 (dis)	n/a
# accessing legal services at LSGMI	MDC	18,259	18,378	16,360	17,786	n/a
Amt. recovered for LSGMI services	MDC	\$2 million	\$1.85 million	\$1.64 million	\$1.27 million	n/a
% of all people below poverty line	MDC	17.0%	17.8%	16.4%	15.3%	n/a
% of people under 18 below poverty line	MDC	23.8%	22.8%	19.6%	20.2%	n/a
% of people 65 and over below the poverty line	MDC	21.1%	21.5%	22.7%	20.0%	n/a
% of all families below the poverty line	MDC	14.9%	15.0%	12.8%	11.8%	n/a
Unemployment rate	MDC	5.5%	4.5%	3.8%	3.8%	n/a
Unemployment insurance claims	MDC	70,583	67,292	51,023	60,718	n/a
# of families making less than \$10,000/year	MDC	40,641	41,895	32,402	26,375	n/a
# of families making \$10,000 to \$14,999	MDC	40,344	42,415	36,564	31,879	n/a
Median family income	MDC	\$40,927	\$42,499	\$46,731	\$49,894	n/a
Per capita income	MDC	n/a	\$29,817	\$32,025	\$33,712	n/a
	Florida	n/a	\$32,618	\$34,798	\$36,720	n/a
Lbs. of food distributed by food banks	4 South Florida Counties	n/a	n/a	n/a	18,748,313 lbs.	n/a

Indicator	Area	Baseline	Fiscal Year			
		2003-04	2004-05	2005-06	2006-07	2007-08
% eligible for free/reduced-price lunch	MDC	n/a	n/a	n/a	n/a	59.3
	Florida	n/a	n/a	n/a	n/a	45.8%

# Children and Adults with Disabilities

## Vision

Persons with disabilities are full participants in all aspects of community life: living, learning and working

## Goals (What we expect to happen ...)

1. Persons with physical, developmental, intellectual and/or sensory disabilities will have access to the services they need
2. Persons with disabilities will function at their highest level of independence

## Recommendations for priorities for funding, policy and strategic development for Children and Adults with Disabilities are ...

- Education and outreach to families and caregivers on availability of resources in the community
- Assessment, case management and individualized plans
- Youth to adult transition services

## Children and Adults with Disabilities *At-A-Glance*

Indicator	Area	Baseline	Calendar Year			
		2004	2005	2006	2007	2008
# of persons with age, blind or general disability eligible for Medicaid	Miami-Dade County (MDC)	200,458	210,300	214,360	217,850	n/a
	Florida	853,077	895,353	905,177	906,674	n/a
% of persons with age, blind or general disabilities eligible for Medicaid	MDC	23.5%	23.49%	23.68%	24.03%	n/a
# of families with disabilities on waiting list for section 8 housing	MDC	5,824	6,407	3,757	5,160	n/a
# of families with disabilities on waiting list for public housing	MDC	1,380	731	3,155	3,625	n/a
# of referrals to Early Steps	MDC	3,974	3,664	3,835	4,042	n/a
# of referrals to FDLRS	MDC	217	366	608	536	n/a
	Florida	5,174	4,495	4,356	4,602	n/a
Rate of birth defects (per 1,000 births)	MDC	58.6	56.1	n/a	n/a	n/a
	Florida	34.4	35.0	n/a	n/a	n/a
# of live births with structural or chromosomal defects	MDC	1,876	1,813	n/a	n/a	n/a
	Florida	7,590	7,889	n/a	n/a	n/a
% of persons with any disability who are employed	MDC	30.5%	30.2%	34.6%	36.7%	n/a
	Florida	36.9%	37.5%	37.2%	36.7%	n/a
% of persons with any disability for whom a poverty status is determined	MDC	n/a	29.3%	30.7%	25.7%	n/a
% of persons with no disability for whom a poverty status is determined	MDC	n/a	15.4%	13.3%	13.2%	n/a



# Children and Adults with Disabilities *At-A-Glance*

Indicator	Area	Baseline	Fiscal Year			
		2003-04	2004-05	2005-06	2006-07	2007-08
# of persons on waiting list for Developmental Disabilities Medicaid Waiver	Florida	n/a	15,279	14,629	11,927	17,429
% of students with disabilities (excluding specific learning or emotional/behavior disorders) graduating high school with a high school diploma	MDC	n/a	20.0%	18.1%	25.7%	27.9%
	Florida	n/a	28.4%	25.3%	27.0%	29.5%
% of students with disabilities (excluding specific learning disabilities or emotional/behavior disorders) graduating high school with a special diploma	MDC	n/a	37.6%	31.8%	34.0%	38.8%
	Florida	n/a	46.4%	45.1%	44.7%	46.6%
% of students with disabilities (excluding specific learning disabilities or emotional/behavior disorders) completing high school	MDC	n/a	59.5%	50.4%	60.1%	68.6%
	Florida	n/a	78.2%	72.7%	74.5%	79.2%
% of students with disabilities (excluding specific learning disabilities or emotional/behavior disorders) dropping out of high school	MDC	n/a	40.5%	49.6%	39.9%	31.4%
	Florida	n/a	21.8%	27.3%	25.5%	20.8%
% of students with specific learning disabilities or emotional/behavior disorders graduating high school with a standard diploma	MDC	n/a	52.9%	44.8%	48.8%	56.8%
	Florida	n/a	51.1%	49.1%	49.4%	56.0%
% of students with specific learning disabilities or emotional/behavior disorders completing high school	MDC	n/a	63.6%	52.8%	56.4%	65.9%
	Florida	n/a	72.6%	68.5%	69.7%	74.7%
% of students with specific learning disabilities or emotional/behavior disorders dropping out of high school	MDC	n/a	36.1%	47.1%	43.4%	34.1%
	Florida	n/a	27.4%	31.5%	30.3%	25.3%
# of students with any disability continuing education after high school at Miami-Dade College	MDC	n/a	2,189	2,162	2,224	2,435

# Children, Youth and Families

## Vision

Children and youth are nurtured by strong, healthy families and a caring community

## Goals (What we expect to happen . . .)

1. Children, youth and families will have improved access to services
2. Children, youth and families will improve their health and wellness
3. Children and youth will increase their school readiness and academic performance
4. Youth will develop positive social and life skills
5. Children, youth and families will have a safe and nurturing environment

## Recommendations for priorities for funding, policy and strategic development for Children, Youth and Families are . . .

- Education and outreach as an access issue
- At-risk youth programs
- Family support services

## Children, Youth and Families At-A-Glance

Indicators	Area	Baseline	Calendar Year			
		2004	2005	2006	2007	2008
# of births below 2500 grams	Miami-Dade County (MDC)	2,703	n/a	n/a	n/a	n/a
% of all births below 2500 grams	MDC	8.4%	9.0%	8.6%	9.0%	n/a
% of adults who are obese	MDC	n/a	n/a	n/a	26.0%	n/a
	Florida	n/a	n/a	n/a	24.1%	n/a
% of high school students who are obese	MDC	n/a	12.1%	n/a	13.0%	n/a
	Florida	n/a	n/a	n/a	11.2%	n/a
# of youth volunteering	MDC	n/a	189	423	1,963	1,197 (as of Oct. 2008)
# of youth 19 and under w/ AIDS	MDC	n/a	n/a	n/a	n/a	745 (as of Sept. 2008)
# of youth 19 and under w/ HIV (not AIDS)	MDC	n/a	n/a	n/a	n/a	576 (as of Sept. 2008)
% of all births to teen mothers	MDC	9.25%	9.58%	9.07%	n/a	n/a
	Florida	10.92%	10.87%	10.90%	n/a	n/a
% of all teen mothers 15-19 with one or more previous births	MDC	15.8%	16.7%	16.8%	n/a	n/a
	Florida	18.6%	18.6%	18.2%	n/a	n/a
% of youth using any illicit drug in the past 30 days	MDC	n/a	n/a	12.3%	n/a	n/a
	Florida	n/a	n/a	15.0%	n/a	n/a
% of youth using alcohol of any illicit drug in the past 30 days	MDC	n/a	n/a	35.8%	n/a	n/a
	Florida	n/a	n/a	35.4%	n/a	n/a

# Children, Youth and Families *At-A-Glance*

Indicators	Area	Baseline	Calendar Year			
		2004	2005	2006	2007	2008
Suicide rate for youth 0-18 (per 100,000)	MDC	0.2	0.6	0.3	1.1	n/a
	Florida	1.3	1.8	1.3	1.2	n/a
# of domestic violence crimes	MDC	15,765	14,474	13,267	11,012	n/a
	Florida	119,772	120,385	115,170	115,150	n/a
Rate of domestic violence crimes (per 100,000 people)	MDC	662.4	597.6	544.4	538.8	n/a
	Florida	683.8	671.9	627.7	616.5	n/a
Rate of children injured in automobile accidents (per 100,000)	MDC	5.6	3.3	3.4	4.8	n/a
Rate of drowning and submersion fatalities for children under 16 (per 100,000)	MDC	1.3	2.3	0.9	3.0	n/a
	Florida	2.4	2.4	2.5	2.7	n/a

Indicator	Area	Baseline	Fiscal Year			
		2003-04	2004-05	2005-06	2006-07	2007-08
Voluntary Pre-Kindergarten (VPK) enrollment	Miami-Dade County (MDC)	n/a	n/a	17,367	17,651	18,680
# of referrals from 211 helpline	MDC	n/a	n/a	n/a	44,026	26,357
# of calls to 211 helpline	MDC	n/a	n/a	n/a	65,452	45,806
% of Kindergartners ready for school (ECHOS)	MDC	n/a	n/a	n/a	84%	87%
% of Kindergartners ready for school (DIBELS letter naming fluency)	MDC	n/a	n/a	n/a	67%	69%
% of Kindergartners ready for school (DIBELS initial sound fluency)	MDC	n/a	n/a	n/a	56%	59%
High school graduation rate	MDC	60.6%	59.9%	59.2%	63.9%	n/a
	Florida	71.6%	71.9%	71.0%	72.4%	n/a
High school drop out rate	MDC	4.6%	4.5%	6.7%	5.8%	n/a
	Florida	2.9%	3.0%	3.5%	3.3%	n/a
% of students continuing their education after high school	MDC	n/a	61.8%	67.5%	68.5%	n/a
	Florida	n/a	57.6%	61.2%	61.7%	n/a
# of juvenile justice secure detention admissions	MDC	5,327	5,441	4,977	4,524	n/a
# of juvenile justice home detention admissions	MDC	1,179	2,177	2,700	2,835	n/a
Incidents of crime and violence in elementary schools	MDC	n/a	6,442	6,147	4,684	n/a
Incidents of crime and violence in middle schools	MDC	n/a	10,311	9,273	7,305	n/a
Incidents of crime and violence in high schools	MDC	n/a	7,208	7,954	6,810	n/a
% of previous year's high school graduates who are employed p/t or f/t	MDC	45.5%	48.0%	53.9%	54.6%	n/a
	Florida	54.1%	55.3%	58.9%	58.1%	n/a
Incidents of child abuse (verified or some indication)	MDC	8,724	7,859	7,829	7,629	n/a
Rate of child abuse per 1000 child population (verified and some indication)	MDC	14.9	13.3	13.1	12.8	n/a
Certificates of completion from the Parent Academy	MDC	n/a	n/a	19,447	55,023	n/a
Active PTAs	MDC	n/a	n/a	241	265	n/a
PTA memberships	MDC	n/a	n/a	52,540	55,952	n/a

# Criminal Justice

## Vision

A criminal justice system that promotes a safe and stable community where residents live securely

## Goals (What we expect to happen ...)

1. Previously incarcerated adults will have access to re-entry services to allow them to return successfully to the community, remain arrest free and crime free and to become productive and contributing members of the community
2. At-risk and incarcerated youth will have access to youth crime prevention, diversion, intervention and re-entry services (conditional release services) to reduce the number of youth in the juvenile justice system

## Recommendations for priorities for funding, policy and strategic development for Criminal Justice are ...

- Comprehensive, meaningful assessments and discharge plans and services based on those assessments for youth and adult offenders
- Increased case management
- Life skills services and supports (vocational, educational, emotional)
- Supervision of ex-offenders



# Criminal Justice *At-A-Glance*

Indicator	Area	Baseline	Calendar Year			
		2004	2005	2006	2007	2008
Crime Rate (violent and nonviolent crime) per 100,000 people	Miami-Dade County (MDC)	6,742.3	6,234.0	5,964.1	6,297.0	n/a
# of youth being arrested	MDC	11,868	11,478	10,860	9,750	n/a

Indicator	Area	Baseline	Fiscal Year			
		2003-04	2004-05	2005-06	2006-07	2007-08
# of inmates enrolled in GED classes	Florida	1,820	1,781	1,813	1,731	n/a
# of inmates completing GED	Florida	1,100	740	1,322	1,313	n/a
# of inmates enrolled in mandatory literacy	Florida	3,423	2,906	2,173	2,106	n/a
# of inmates completed mandatory literacy	Florida	1,022	908	824	699	n/a
# of inmates enrolled in substance abuse programs	Florida	n/a	9,878	10,972	10,316	n/a
# of ex-offenders receiving employment services	MDC	n/a	297	283	260	n/a
# of ex-offenders placed in workforce through employment services	MDC	n/a	249	252	220	n/a
# of youth referred to DJJ from schools	MDC	12,023	12,193	11,292	10,723	n/a
# of delinquency referrals diverted from court	MDC	1,415	1,267	1,310	1,437	n/a
# of youth on probation	MDC	3,641	3,308	2,542	2,150	n/a
# of youth committed to residential and correctional facilities	MDC	648	640	569	388	n/a
# of secure detention admissions	MDC	5,327	5,441	4,977	4,524	n/a
# of home detention admission	MDC	1,179	2,177	2,700	2,835	n/a
# of youth transferred to adult court	MDC	349	361	316	438	n/a
% of youth completing program services who received an adjudication, adjudication withheld, or adult conviction within 1 year of program release	MDC	40.0%	40.0%	39.0%	n/a	n/a

# Elder Services

## Vision

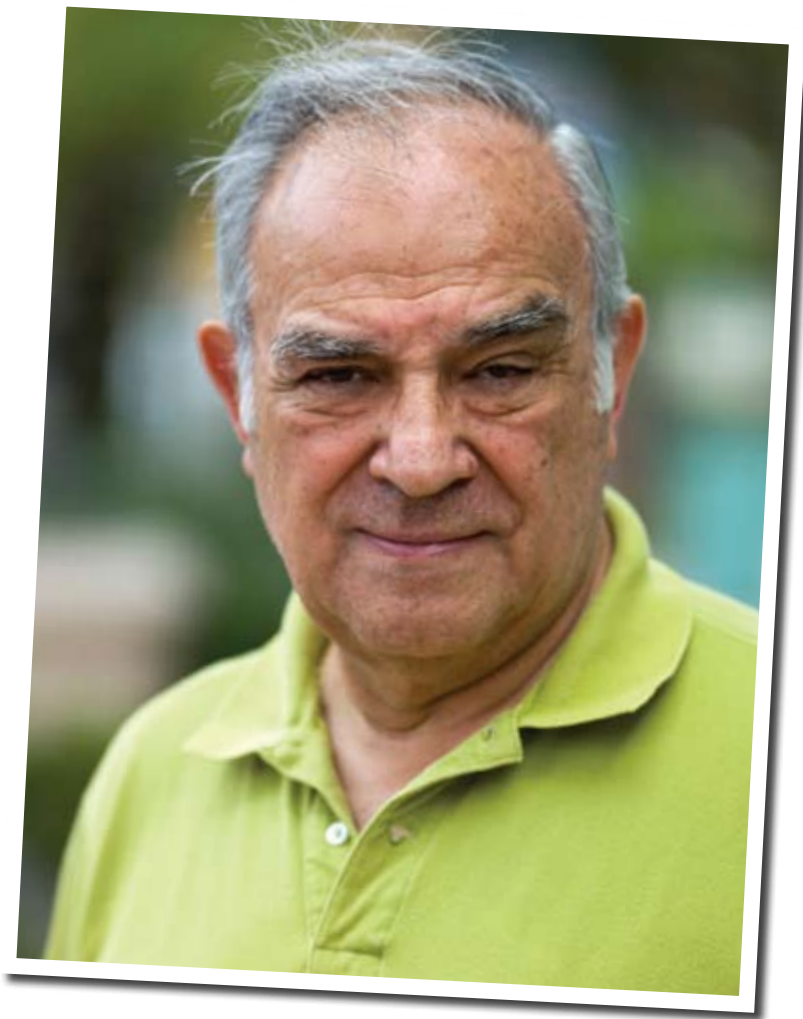
Older adults age successfully and live safely in a supportive community

## Goals (What we expect to happen ...)

1. Older adults and their families will have access to services
2. Older adults will live where they choose for as long as they have the capacity to do so
3. Older adults will be protected from abuse, exploitation, neglect and danger

## Recommendations for priorities for funding, policy and strategic development for Elder Services are ...

- Homecare
- Older adult abuse
- Education as an access issue





# Elder Services At-A-Glance

Indicator	Area	Baseline	Calendar Year			
		2004	2005	2006	2007	2008
# of older adults who are food insecure	Miami-Dade County (MDC)	16,562	16,798	17,221	17,412	n/a
% of older adults who are food insecure	MDC	5.10%	5.10%	5.12%	5.17%	n/a
# of skilled nursing facility beds	MDC	8,275	8,305	8,305	8,048	n/a
	Florida	80,822	83,020	83,350	82,505	n/a
% of occupancy of skilled nursing facility beds	MDC	87.1%	87.9%	88.8%	91.5%	n/a
	Florida	86.1%	88.1%	87.9%	88.2%	n/a
# of assisted living facility beds	MDC	8274	8789	8814	9092	n/a
	Florida	77,257	74,631	74,767	75,967	n/a
# of adults 65+ living in a non-family household	MDC	n/a	44.9%	42.6%	43.4%	n/a
# of adults 65+ living in a family household	MDC	n/a	55.1%	57.4%	56.6%	n/a
% of adults 65+ living below the poverty level	MDC	21.1%	21.5%	22.7%	20.0%	n/a
	Florida	9.7%	10.1%	10.1%	9.4%	n/a
	United States	9.4%	9.9%	9.9%	9.5%	n/a
Employment rate of adults age 65-74	MDC	23.5%	22.7%	23.7%	23.8%	n/a
Employment rate of adults age 75+	MDC	6.7%	5.5%	5.0%	4.9%	n/a
% of adults spending 30% or more of their income on owner-occupied housing	MDC	n/a	49.9%	46.4%	49.2%	n/a
	Florida	n/a	29.4%	31.1%	33.1%	n/a
	United States	n/a	27.2%	28.6%	28.0%	n/a
% of adults spending 30% or more of their income on renter-occupied housing	MDC	n/a	63.1%	66.5%	66.8%	n/a
	Florida	n/a	58.6%	60.5%	60.9%	n/a
	United States	n/a	53.4%	54.0%	53.4%	n/a
Wait list for section 8 tenant-based assistance for older adult families	MDC	8,635	15,051	5,806	8,745	n/a
% of caregivers who improve their caregiving ability after one year of service intervention	MDC	97.49%	96.61%	97.12%	97.35%	n/a
# of caregivers who improved their caregiving ability after one year of service intervention	MDC	1,282	1,026	1,247	1,358	n/a
Suicide Rates for residents 65+ (per 100,000)	MDC	15.81	18.11	18.45	n/a	n/a
	Florida	18.36	17.32	18.16	n/a	n/a
# of Adult Protective Services referrals for adults 60+	MDC	97	150	219	249	n/a

Indicator	Area	Baseline	Fiscal Year			
		2003-04	2004-05	2005-06	2006-07	2007-08
# of mental health hospitalizations for adults 65+	MDC	n/a	n/a	n/a	3,041	n/a
	Florida	n/a	n/a	n/a	13,476	n/a

# Health

## Vision

Residents have access to quality healthcare and lead healthy lives

## Goals (What we expect to happen . . .)

1. Residents will have access to primary, secondary, tertiary and behavioral health services
2. Residents will lead healthy lives

## Recommendations for priorities for funding, policy and strategic development for Health are . . .

- Addressing health disparities
- Access to preventive care
- Reducing preventable diseases through healthy lifestyles

## Health At-A-Glance

Indicator	Area	Baseline	Fiscal Year				
		2004	2005	2006	2007	2008	
% of uninsured adults under the age of 65	Miami-Dade County (MDC)	28.6%	n/a	n/a	n/a	n/a	
% of uninsured adults under the age of 65 (white)	MDC	12.1%	n/a	n/a	n/a	n/a	
% of uninsured adults under the age of 65 (Hispanic)	MDC	33.0%	n/a	n/a	n/a	n/a	
% of uninsured adults under the age of 65 (black)	MDC	29.2%	n/a	n/a	n/a	n/a	
% of children 19-35 months who are immunized	MDC	84%	83%	82%	n/a	n/a	
	Florida	89%	79%	82%	n/a	n/a	
Rate (per 100,000) of vaccine preventable diseases for people of all ages	MDC	2.1	2.2	2.1	n/a	n/a	

Indicator	Area	Baseline	Fiscal Year				
		2003-04	2004-05	2005-06	2006-07	2007-08	
% of persons enrolled in Medicaid	MDC	n/a	18.6%	19.4%	18.6%	n/a	
% of persons enrolled in Medicare	MDC	n/a	14.3%	14.4%	14.6%	n/a	
# of public schools with health programs	MDC	n/a	14	33	33	n/a	

# Immigrants and New Entrants

## Vision

Immigrants and new entrants (including refugees, asylum and victims of trafficking) successfully transition and integrate into the community

## Goals (What we expect to happen . . .)

1. Immigrants and new entrants will have access to social services, public benefits and employment
2. Immigrants and new entrants will be empowered to integrate into the community

## Recommendations for priorities for funding, policy and strategic development for Immigrants and New Entrants are . . .

- Education and outreach as an access to benefits issue
- Vocational and educational services
- English language competency

## Immigrants and New Entrants *At-A-Glance*

Indicator	Area	Baseline	Calendar Year				
		2004	2005	2006	2007	2008	
% foreign born population in the civilian labor force	Miami-Dade County (MDC)	n/a	n/a	59.2%	59.5%	n/a	
% of native population in the civilian labor force	MDC	n/a	n/a	57.0%	56.8%	n/a	
% of foreign born population below 100% poverty	MDC	n/a	n/a	16.4%	15.3%	n/a	
% of foreign born population between 100-199% poverty	MDC	n/a	n/a	23.2%	22.8%	n/a	
% of foreign born population 200% and above poverty	MDC	n/a	n/a	60.4%	61.9%	n/a	
% of foreign born population in owner occupied housing	MDC	n/a	56.0%	57.5%	58.2%	n/a	
% of foreign born population in renter occupied housing	MDC	n/a	44.0%	42.5%	41.8%	n/a	
% of home owners that are foreign born who pay 30%+ of their income on housing	MDC	n/a	53.5%	53.6%	57.1%	n/a	
% of renters that are foreign born who pay 30%+ of their income on housing	MDC	n/a	62.1%	64.5%	63.9%	n/a	
% of foreign born population 5+ who speak English “less than very well”	MDC	n/a	58.8%	59.4%	60.5%	n/a	
% of foreign born population with less than a high school diploma	MDC	n/a	28.8%	28.3%	27.5%	n/a	
% of foreign born population with a high school diploma (or equivalency)	MDC	n/a	27.6%	28.4%	28.8%	n/a	
% of foreign born population with Bachelors degree	MDC	n/a	14.0%	15.8%	16.1%	n/a	
% of foreign born population with graduate or professional degree	MDC	n/a	7.6%	8.0%	7.3%	n/a	
Median earnings for foreign born males	MDC	n/a	\$29,138	\$29,576	\$31,037	n/a	
Median earnings for foreign born females	MDC	n/a	\$23,394	\$22,874	\$25,991	n/a	
Median earnings for males	MDC	n/a	n/a	n/a	\$34,648	n/a	
Median earning for females	MDC	n/a	n/a	n/a	\$30,003	n/a	
Persons obtaining LPR	Miami-Ft. Lauderdale Core Based Statistical Area	49,816	79,558	98,918	78,172	n/a	
Persons becoming naturalized citizens	Miami-Ft. Lauderdale Core Based Statistical Area	28,852	24,112	63,623	36,159	n/a	

# Workforce Development for Special Populations

## Vision

Hard-to-serve job seekers (poorly educated, poorly skilled, individuals with disabilities, ex-offenders, at-risk youth or older adults) have the opportunity to learn, work and become self-sufficient

## Goals (What we expect to happen . . .)

1. Hard-to-serve job seekers will have access to workforce development services
2. Hard-to-serve job seekers will be equipped with the skills needed to be job ready
3. Hard-to-serve job seekers will find and maintain employment

## Recommendations for priorities for funding, policy and strategic development for Workforce Development for Special Populations are . . .

- Comprehensive assessments and services that support job seekers from education/training to employment
- Advocacy for increased funding targeted to workforce development for special populations
- Advocacy with the business community to increase employment for hard-to-serve job seekers

## Workforce Development for Special Populations *At-A-Glance*

Indicator	Area	Baseline	Calendar Year			
		2004	2005	2006	2007	2008
Employment rate of persons with any disability aged 16-64	MDC	n/a	30.2%	34.6%	36.7%	n/a
	Florida	n/a	37.0%	38.3%	36.7%	n/a
Employment rate of persons aged 65-74	MDC	n/a	22.7%	23.7%	23.8%	n/a
Employment rate of persons aged 75+	MDC	n/a	5.5%	5.0%	4.9%	n/a
% in labor force (persons aged 65-74)	MDC	n/a	24.6%	25.2%	24.5%	n/a
% in labor force (persons aged 75+)	MDC	n/a	6.1%	5.2%	5.2%	n/a

Indicator	Area	Baseline	Fiscal Year			
		2003-04	2004-05	2005-06	2006-07	2007-08
# of ex-offenders receiving employment services	MDC	n/a	297	283	260	n/a
# of ex-offenders placed in workforce through employment services	MDC	n/a	249	252	220	n/a
% of previous year's high school graduates who are employed p/t or f/t	MDC	45.5%	48.0%	53.9%	54.6%	n/a

# Special Needs: Homelessness

## Vision

All residents have access to safe, affordable and permanent housing and the means to maintain such housing

## Goals (What we expect to happen . . .)

1. Miami-Dade County will see a reduction in homelessness
2. At risk and homeless persons will have access to emergency prevention services
3. Homeless street people will have access to expanded outreach services
4. Homeless individuals and their families will be placed in permanent housing
5. Homeless persons will increase their income

## Recommendations for priorities for funding, policy and strategic development for Homelessness are . . .

- Community education on homeless issues
- Increased case income supports
- Increased affordable housing

## Special Needs: Homelessness *At-A-Glance*

Indicators	Area	Baseline	Calendar Year				
		2004	2005	2006	2007	2008	
# of homeless individuals	Miami-Dade County (MDC)	7,627	5,056	4,709	4,352	4,574	
# of nights homeless spend in emergency shelter from EFSP	MDC	2,775	2,512	1,920	2,027	n/a	
# of persons at risk of homelessness receiving rent and mortgage assistance from EFSP	MDC	1,304	858	711	496	n/a	
# of homeless with mental health disorders	MDC	n/a	n/a	1,104	865	2,058	
# of homeless with substance abuse issues	MDC	n/a	n/a	953	1,047	2,012	
% of transitional housing participants leaving transitional housing and moving to HUD funded permanent housing	MDC	n/a	46%	58%	n/a	n/a	
Total number of adults who exited continuum of care	MDC	n/a	2,571	3,165	n/a	n/a	
% of adults who exited continuum of care with financial resources	MDC	n/a	74.2%	56.3%	n/a	n/a	

# Special Needs: Mental Health

## Vision

Individuals with mental illness live safely and function at their highest level of independence within the community

## Goals (What we expect to happen . . .)

1. Residents with mental health or co-occurring (with substance abuse) disorders will have access to assessment, treatment and post-treatment services
2. Residents with mental health or co-occurring disorders will live safely and function at their highest level of independence

## Recommendations for priorities for funding, policy and strategic development for Mental Health are . . .

- Assessment services
- Peer support programs
- Child mental health services





# Special Needs: Mental Health

## At-A-Glance

Indicator	Area	Baseline	Calendar Year			
		2004	2005	2006	2007	2008
Rate of suicide (per 100,000)	Miami-Dade County (MDC)	8.2	8.0	7.8	n/a	n/a
	Florida	13.5	12.8	13.1	n/a	n/a
# of persons with mental health disorders who are homeless	MDC	1,118	917	1,004	865	n/a
% of persons with mental health who are homeless	MDC	15%	18%	21%	20%	n/a
# of children age 0 -5 with mental illness	MDC	1,251	1,042	2,307	1,033	n/a
Average # of days seriously emotionally disturbed children spend in the community	Miami-Dade and Monroe counties	357.26	352.6	352.19	352.29	n/a
# of dependency cases at DCF for children age 0-5	Miami-Dade and Monroe counties	125	450	397	447	n/a
% of dependency cases (of all cases received) at DCF for children age 0-5	Miami-Dade and Monroe counties	9.99%	23.17%	17.21%	23.12%	n/a
% of male youth who seriously considered suicide	MDC	n/a	7.0%	n/a	9.2%	n/a
% of male youth who attempted suicide	MDC	n/a	4.7%	n/a	7.3%	n/a
% of female youth who seriously considered suicide	MDC	n/a	17.0%	n/a	14.9%	n/a
% of female youth who attempted suicide	MDC	n/a	11.0%	n/a	10.3%	n/a
% of school days youth with serious emotional disturbances attend	MDC	91.58%	87.19%	88.12%	86.35%	n/a
# of persons with mental illness receiving community mental health supports from Medicaid	MDC	31,705	29,909	22,612	7,550	n/a
	Florida	145,607	143,955	107,841	65,735	n/a
# of persons with mental illness receiving psychiatric diagnosis supports from Medicaid	MDC	2,714	2,656	1,927	552	n/a
	Florida	8,865	8,807	6,741	3,436	n/a

Indicator	Area	Baseline	Fiscal Year			
		2003-04	2004-05	2005-06	2006-07	2007-08
Rate of Individuals with mental illness and justice system involvement (per 100,000)	MDC	n/a	n/a	12.4	17.1	n/a
	Florida	n/a	n/a	17.2	20.4	n/a
Rate of persons with a mental health hospitalization (per 100,000)	MDC	n/a	n/a	n/a	730	n/a
	Florida	n/a	n/a	n/a	566	n/a
# of persons with a mental health hospitalization	MDC	n/a	n/a	n/a	17,452	n/a
	Florida	n/a	n/a	n/a	101,193	n/a
% of DCF clients with mental health outcomes who earn less than \$20,000/yr	MDC	n/a	98.44%	98.60%	98.41%	n/a
	Florida	n/a	97.83%	97.50%	96.76%	n/a
# of DCF clients with mental health outcomes who are working	MDC	n/a	19,625	23,003	18,221	n/a

# Special Needs: Substance Abuse

## Vision

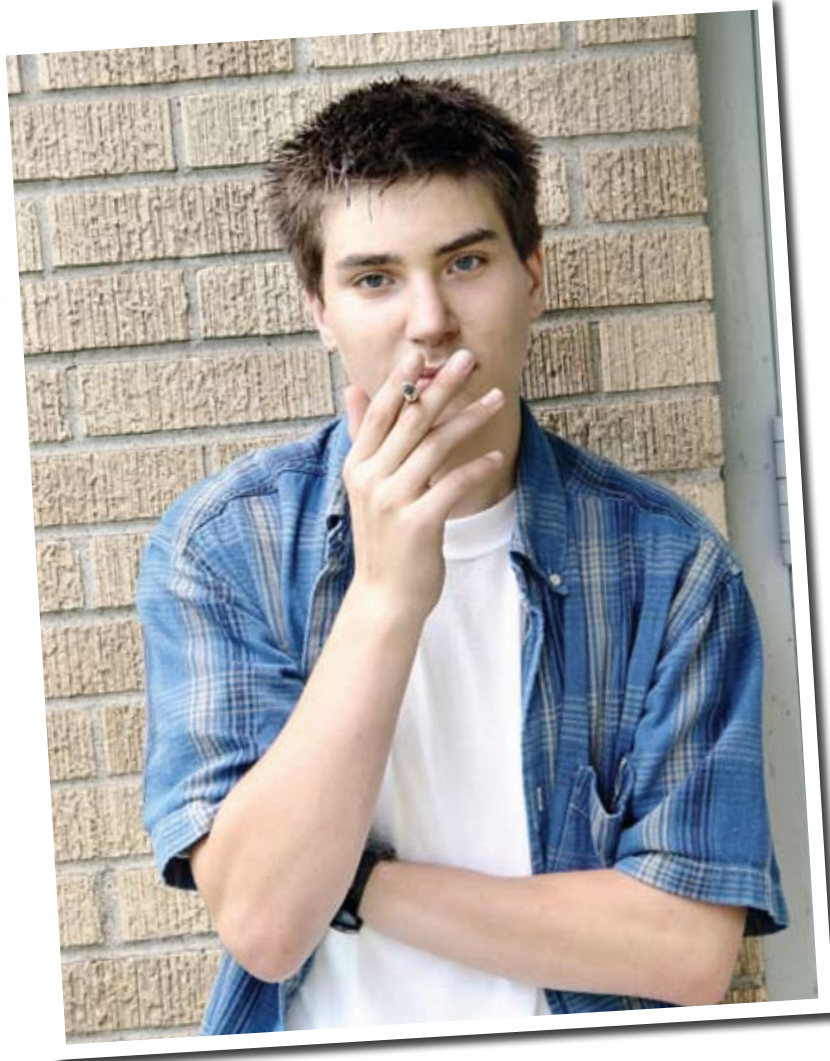
Residents have needed services and support to prevent and address substance abuse dependencies and improve their well being

## Goals (What we expect to happen ...)

1. Residents at risk of or with substance abuse or co-occurring (with mental health) disorders will have access to prevention, assessment, treatment, and post-treatment services
2. Residents at risk of or with substance abuse or co-occurring (with mental health) disorders will function at their highest level of independence

## Recommendations for priorities for funding, policy and strategic development for Substance Abuse are ...

- Adult treatment services
- Prevention services (including education and awareness)
- Post-treatment supports



# Special Needs: Substance Abuse

## At-A-Glance

Indicator	Area	Baseline	Calendar Year			
		2004	2005	2006	2007	2008
% of youth who use alcohol in the past 30 days	Miami-Dade County (MDC)	21.8%	n/a	23.9%	n/a	n/a
# of adults who had at least one drink of alcohol in the past 30 days	MDC	n/a	n/a	n/a	49.1%	n/a
% of adults who are heavy drinkers (men who have 2 or more drinks per day; women with 1 or more drink a day)	MDC	n/a	n/a	n/a	6.2%	n/a
% of adults who binge drink (men with 5 or more drinks on one occasion or women with 4 or more)	MDC	n/a	n/a	n/a	13.5%	n/a
# of pre-natal screenings with positive results for substance abuse	MDC	5,149	5,600	5,553	5,182	n/a
% of pre-natal screenings with positive results for substance abuse	MDC	34.1%	29.3%	30.0%	24.5%	n/a
Mean age of first tobacco use	MDC	12.4	n/a	12.8	n/a	n/a
Mean age of first marijuana use	MDC	13.7	n/a	13.9	n/a	n/a
Mean age of first sip of alcohol	MDC	12.6	n/a	12.8	n/a	n/a
Mean age of first drink of alcohol	MDC	14.2	n/a	14.3	n/a	n/a

Indicator	Area	Baseline	Fiscal Year			
		2003-04	2004-05	2005-06	2006-07	2007-08
# of individuals in substance abuse treatment who have had criminal justice interactions	Miami-Dade County (MDC)	n/a	n/a	168	256	177
# of adults staying in substance abuse treatment and clean 30 days	MDC	n/a	n/a	879	1,680	n/a
# of individuals with substance abuse or co-occurring disorders in homeless shelters	MDC	n/a	n/a	n/a	344	1,137
% of children who remain drug free 12 months after substance abuse treatment	Florida	n/a	58%	67%	n/a	n/a
% of adults who remain drug free 12 months after substance abuse treatment	Florida	n/a	68%	81%	73%	n/a

# Special Needs: Victims of Domestic Violence or Sexual Assault

## Vision

A safe, healthy, informed community where everyone works together to eliminate domestic violence and sexual assault

## Goals (What we expect to happen . . .)

1. Victims of domestic violence and sexual assault will have access to services
2. Victims of domestic violence and sexual assault will live safely and function independently in the community

## Recommendations for priorities for funding, policy and strategic development for Victims of Domestic Violence and Sexual Assault are . . .

- Education and outreach as an access issue
- Mental health support services
- Affordable housing
- Community-based service development



# Special Needs: Victims of Domestic Violence or Sexual Assault *At-A-Glance*

Indicator	Area	Baseline	Calendar Year			
		2004	2005	2006	2007	2008
# of domestic violence related homicides	MDC	45	22	42	21	n/a
DV homicides as % of total homicides	MDC	20%	11%	16%	9%	n/a
# of DV related suicides	MDC	18	16	16	13	n/a
DV suicides as % of total suicides	MDC	8%	8%	8%	5%	n/a
# of DV temporary injunctions filed	MDC	n/a	4,920	5,429	5,220	n/a
# of misdemeanor DV cases filed	MDC	n/a	n/a	5,304	4,645	n/a
# of victims age 0-11 presenting at Roxcy Bolton Rape treatment Center	MDC	n/a	n/a	n/a	151	n/a
# of victims age 12-17 presenting at Roxcy Bolton Rape treatment Center	MDC	n/a	n/a	n/a	290	n/a
# of victims age 18+ presenting at Roxcy Bolton Rape treatment Center	MDC	n/a	n/a	n/a	286	n/a

Indicator	Area	Baseline	Fiscal Year			
		2003-04	2004-05	2005-06	2006-07	2007-08
# of hotline calls to certified domestic violence centers	Miami-Dade County (MDC)	n/a	5,491	6,392	4,808	6,864
# of victims accessing emergency shelter at certified domestic violence centers	MDC	n/a	841	830	793	1,188
# of female victims accessing emergency shelter at certified domestic violence centers	MDC	n/a	413	406	382	589
# of child victims accessing emergency shelter at certified domestic violence centers	MDC	n/a	428	421	441	599
# of persons receiving face-to-face counseling at certified domestic violence centers	MDC	n/a	1,986	3,310	4,150	4,376
# of women receiving face-to-face counseling at certified domestic violence centers	MDC	n/a	1,275	1,372	1,392	1,670
# of children receiving face-to-face counseling at certified domestic violence centers	MDC	n/a	705	1,862	2,647	2,641
# of persons receiving telephone counseling at certified domestic violence centers	MDC	n/a	2,871	2,206	2,203	4,552
# of women receiving telephone counseling at certified domestic violence centers	MDC	n/a	2,793	2,180	2,169	4,501
# of men receiving telephone counseling at certified domestic violence centers	MDC	n/a	78	26	34	51
# of adults leaving shelter after 72 hours at certified domestic violence center	MDC	n/a	278	362	333	499
# of adults leaving shelter with safety plan after 72 hours at certified domestic violence center	MDC	n/a	273	362	333	499
# of child assessments at certified domestic violence centers	MDC	n/a	428	388	378	558
# of DV victims age 60+ served in emergency shelters at certified domestic violence centers	MDC	n/a	6	5	1	4
# of DV victims age 60+ served in outreach at certified domestic violence centers	MDC	n/a	6	28	53	34



### **Staff of the Alliance for Human Services**

**Mark Buchbinder**

President/CEO

**Kevin Bulger**

Community Planning Liaison/Special Projects

**Susan Chetwood**

Special Projects Coordinator

**Gil Contreras**

Community Planning Liaison

**Shelley-Anne Glasgow-Wilson**

Planning and Evaluation Specialist

**Gretta Jimenez**

Community Planning Liaison

**Jose Marcano**

Administrative Assistant

**Andres Rivera**

Executive Administrator



For a copy of the Miami-Dade County Human Services Progress Report for 2008 - An Update to the Social Services Master Plan 2005-2007  
visit our website at [www.alliance4hs.org](http://www.alliance4hs.org) or Miami-Dade County's website at: [www.miamidade.gov](http://www.miamidade.gov)



**Alliance For Human Services • 3250 S.W. 3rd Avenue • Miami, FL 33129 • [www.alliance4hs.org](http://www.alliance4hs.org)**