



MIAMI-DADE POLICE DEPARTMENT



Contractual Police Service for
Proposed Incorporation Area of
South MAC
Area A

October 2014



Miami-Dade Police Department

- MDPD has 2,852 sworn positions
- 153 MDPD personnel are under contract to the Town of Miami Lakes, Village of Palmetto Bay and Town of Cutler Bay



Current Interlocal Police Agreements

Miami Lakes

Since 2001

49 Personnel

Palmetto Bay

Since 2003

46 Personnel

Cutler Bay

Since 2006

58 Personnel

5 year contract/agreement

Branding of vehicles and uniforms

Town Commander



Local Police Patrol Services

- Responding to emergency and non-emergency calls for service
- Preventing and deterring crime
- Preventive and directed patrolling
- Arresting criminal offenders
- Maintaining public order
- Enforcing traffic laws and handling traffic crashes
- Conducting general investigations
- Addressing quality of life issues



Ancillary Services

Included in the Agreement at no charge

- Office of the Director
- Police Legal Bureau
- Public Information & Education Bureau (Media Relations)
- Central Records Bureau
- North and South Division Chiefs



Support Services

The contract support fee includes:

- Personnel Management Bureau
- Fiscal Administration Bureau
- Miami-Dade Public Safety Training Institute
- Professional Compliance Bureau
- Facilities Maintenance - utilities, janitorial, lease costs
- Support Equipment - police radio system, officer equipment



Specialized Police Services

Funded through County-wide taxes

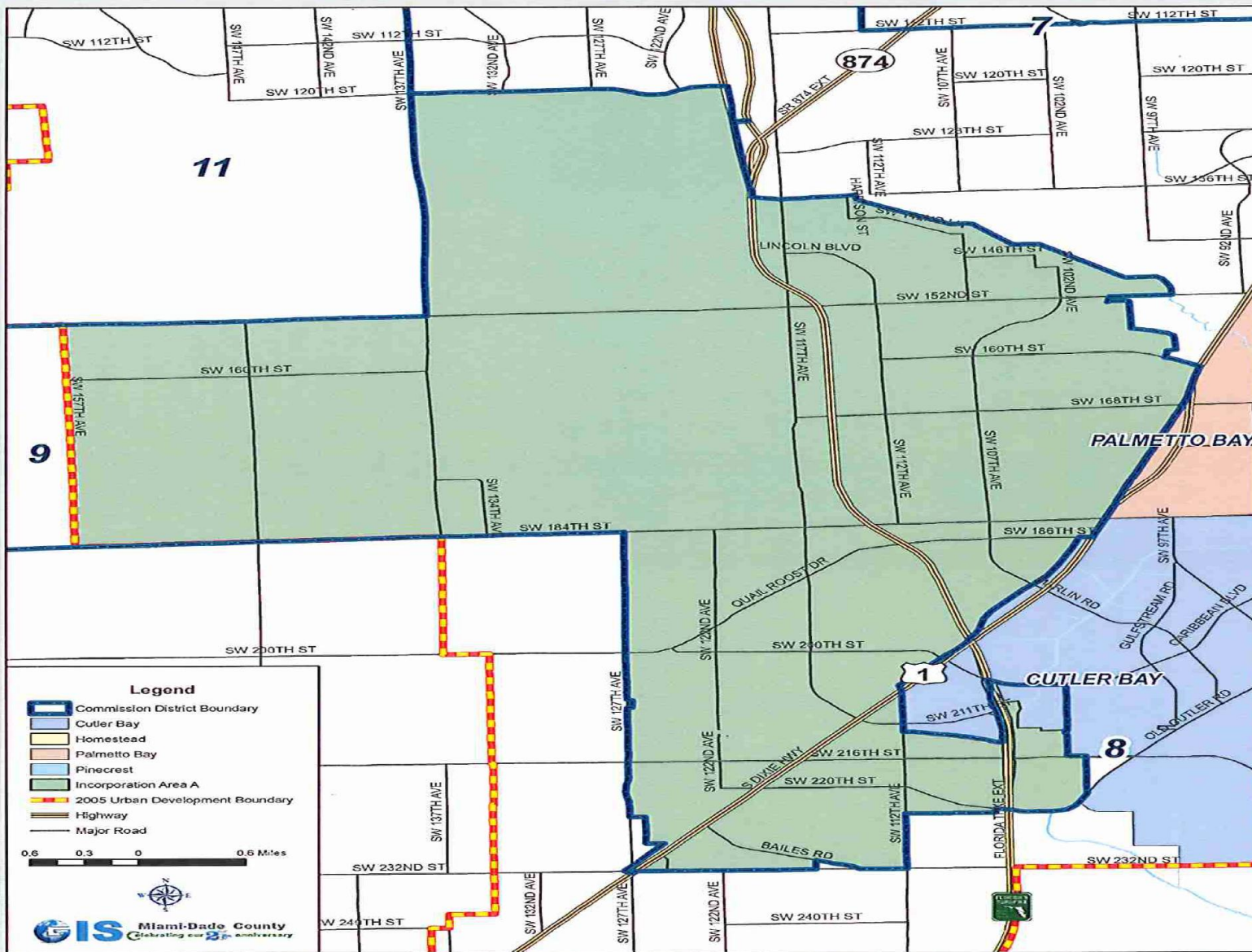
- Robbery
- Sexual Crimes
- Domestic Crimes
- Homicide
- Narcotics Investigations
- Economic Crimes
- Crime Scene Investigations & Crime Laboratory
- Property and Evidence
- Tactical Operations



Hammocks District

- The proposed area of incorporation for the South Area A MAC is approximately 24 square miles and the majority of this area is located within the Hammocks Police District
- Population of Hammocks District is approximately 329,656 residents
- Population of the South MAC Area A is approximately 127,267 residents

Incorporation Area A



This map was prepared by the Miami Dade County Information Technology Department Geographic Information Systems (GIS) Division

June, 2012

This map and associated information is to be used only for public business as may be authorized by law and no reproduction for commercial use or sale is permitted. No expressed or implied warranties including but not limited to the implied warranties of merchantability or fitness for a particular purpose is made. User is warned the materials contained herein are provided "as is".



Calls-For-Service

- Total Calls in the
proposed
Incorporation Area
Calendar Year 2013

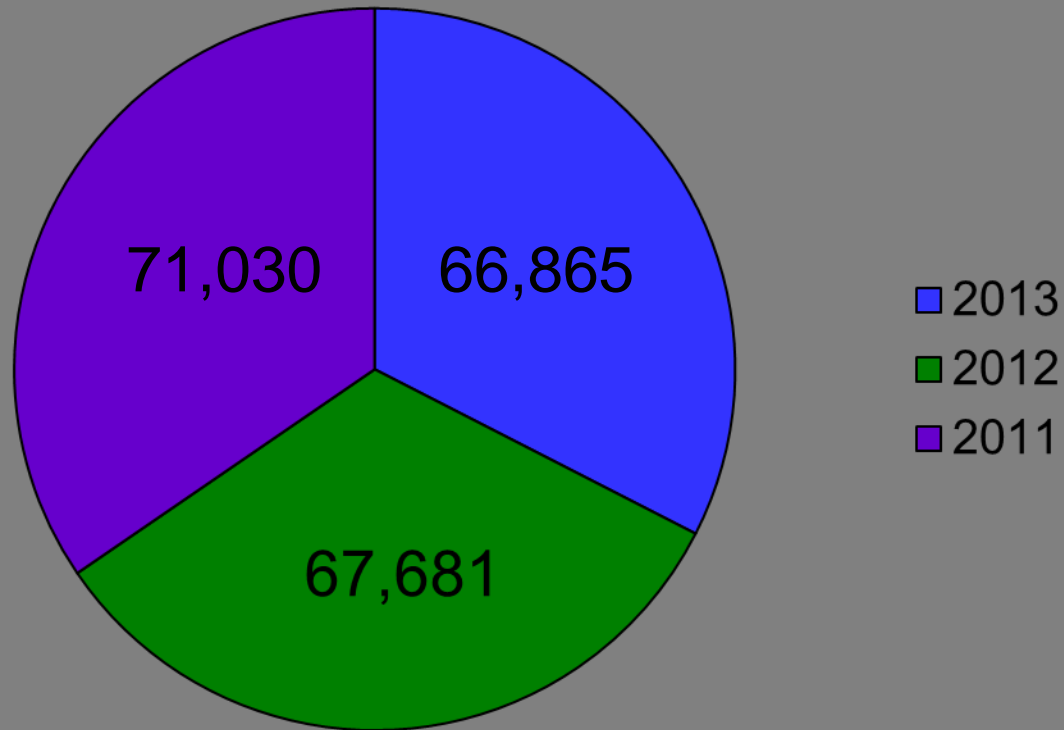
66,865 calls for service
66% of the calls in Hammocks District
- Total Calls in
Hammocks District
Calendar Year 2013

100,894
calls for service



2011/2012/2013 Calls For Service within the proposed MAC area

Calls for Service





Personnel Allocation Methodology

Several Factors are reviewed:

- Calls For Service (CFS) information is extracted for the proposed area and District
- Number of Part I and II Crimes
- Boundaries are identified
- Total Population
- Major commercial properties or county-wide interest are identified
- Total CFS and Part I and II Crimes for District are compared to proposed incorporation area
- Base level staffing is developed to include relief factor to accommodate 24-hour staffing



Current Budgeted Staffing for the Hammocks District

• Major	1
• Captain	1
• Lieutenants	6
• Sergeants	26
• Officers	160
• Total Sworn	194

• PSA's	5
• PSS	1
• Admin Secretary	1
• Secretary	3
• PRS	2
• PCAS	4
Total Non-Sworn	16

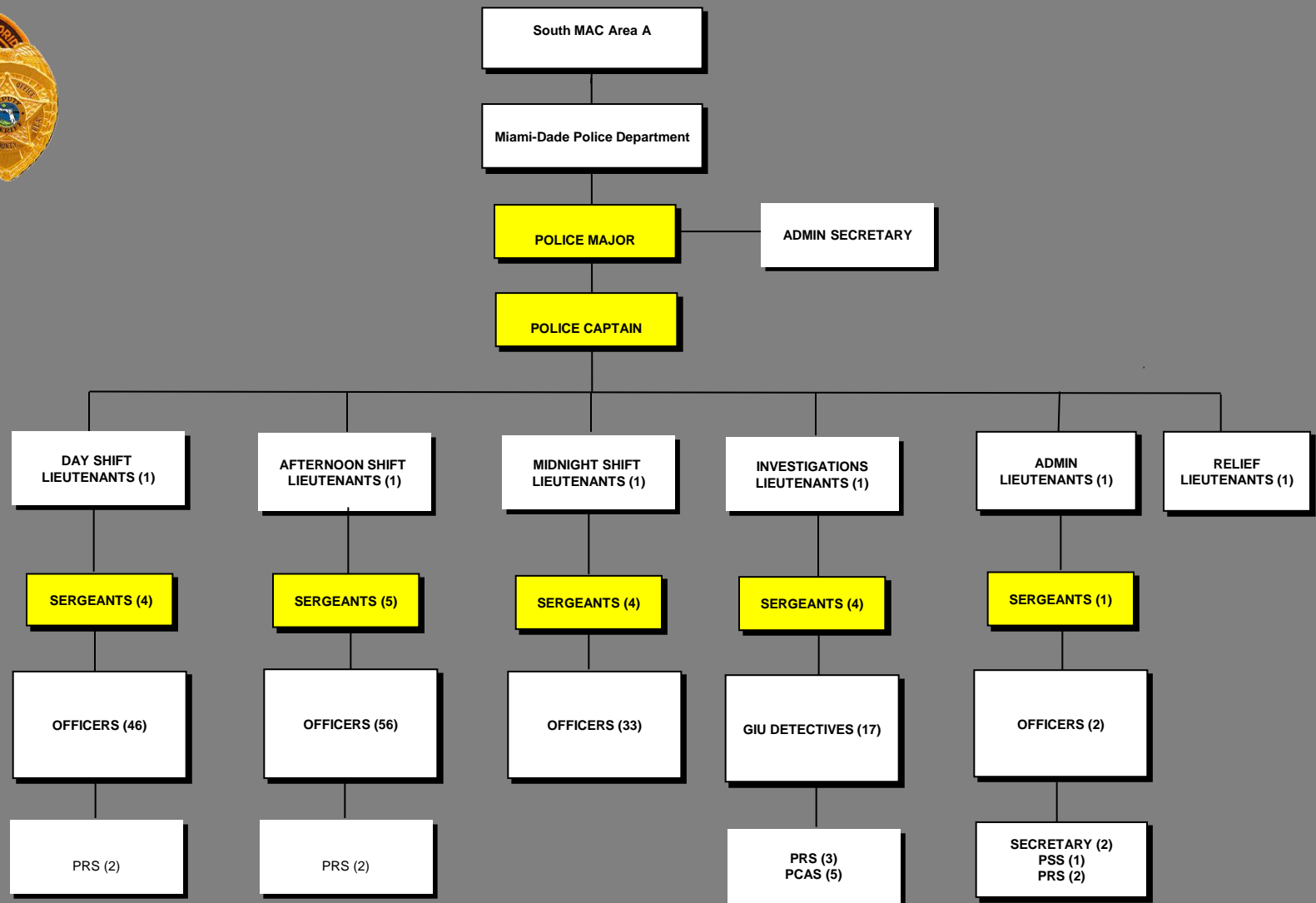


Minimum Staffing

The following represents minimum staffing levels needed to service the area, providing for viable response times, supervisory, officer safety, and relief concerns.

• Major	1
• Captain	1
• Lieutenants	6
• Sergeants	14
• Detective Unit Sergeants	4
• Officers	137
• Detectives	17
Total Sworn	180

• PSA's	0
• PSS	1
• Admin Secretary	1
• Secretary	2
• PRS	9
• PCAS	5
Total Non-Sworn	18



Shift Configuration – Minimum Staffing

South MAC Area A
Estimated Personnel Costs for FY 2014/2015
Recommended Minimum Staffing

Classification	#	Avg. Cost	Total
Police Major	1	\$175,853	\$175,853
Police Captain	1	\$198,666	\$198,666
Police Lieutenant	6	\$168,155	\$1,008,930
Police Sergeant	14	\$148,219	\$2,075,066
Detective Unit Sergeant	4	\$148,469	\$593,876
Police Detective	17	\$121,421	\$2,064,157
Police Officer	137	\$121,171	\$16,600,427
COPS	0	\$0	\$0
SUB-TOTAL SWORN	180	-----	\$22,716,975
Public Service Aide	0	\$73,284	\$0
Police Records Specialist	9	\$62,739	\$564,651
Police Crime Analyst Specialist	5	\$86,673	\$433,365
Office Support Specialist	0	\$0	\$0
Data Entry Specialist	0	\$0	\$0
Police Station Specialist	1	\$74,492	\$74,492
Administrative Secretary	1	\$71,828	\$71,828
Secretary	2	\$70,617	\$141,234
SUB-TOTAL NON-SWORN	18	-----	\$1,285,570
Marked Vehicles	151	\$8,242	\$1,244,542
Unmarked Vehicles	29	\$6,333	\$183,657
PSA Vehicle	0	\$6,283	\$0
Motorcycle	0	\$8,169	\$0
SUB-TOTAL VEHICLES	-----		\$1,428,199
General Overtime	178	\$6,861	\$1,221,258
SUB-TOTAL OVERTIME	-----		\$1,221,258
Local Patrol Subtotal w/ Overtime			\$26,652,002
5.43% contract support fee	-----		\$1,447,204
EST. MIN. PATROL COST	-----		\$28,099,206
<i>* All costs are based on estimated average salaries and include Fringe, longevity costs for FY 2014-2015.</i>			
<i>* Personnel costs do not include contractual pay adjustments</i>			
<i>2014/15 estimate OT average for sworn based on budget projections and subject to change. Per FAB</i>			
SL 10-13-2014			



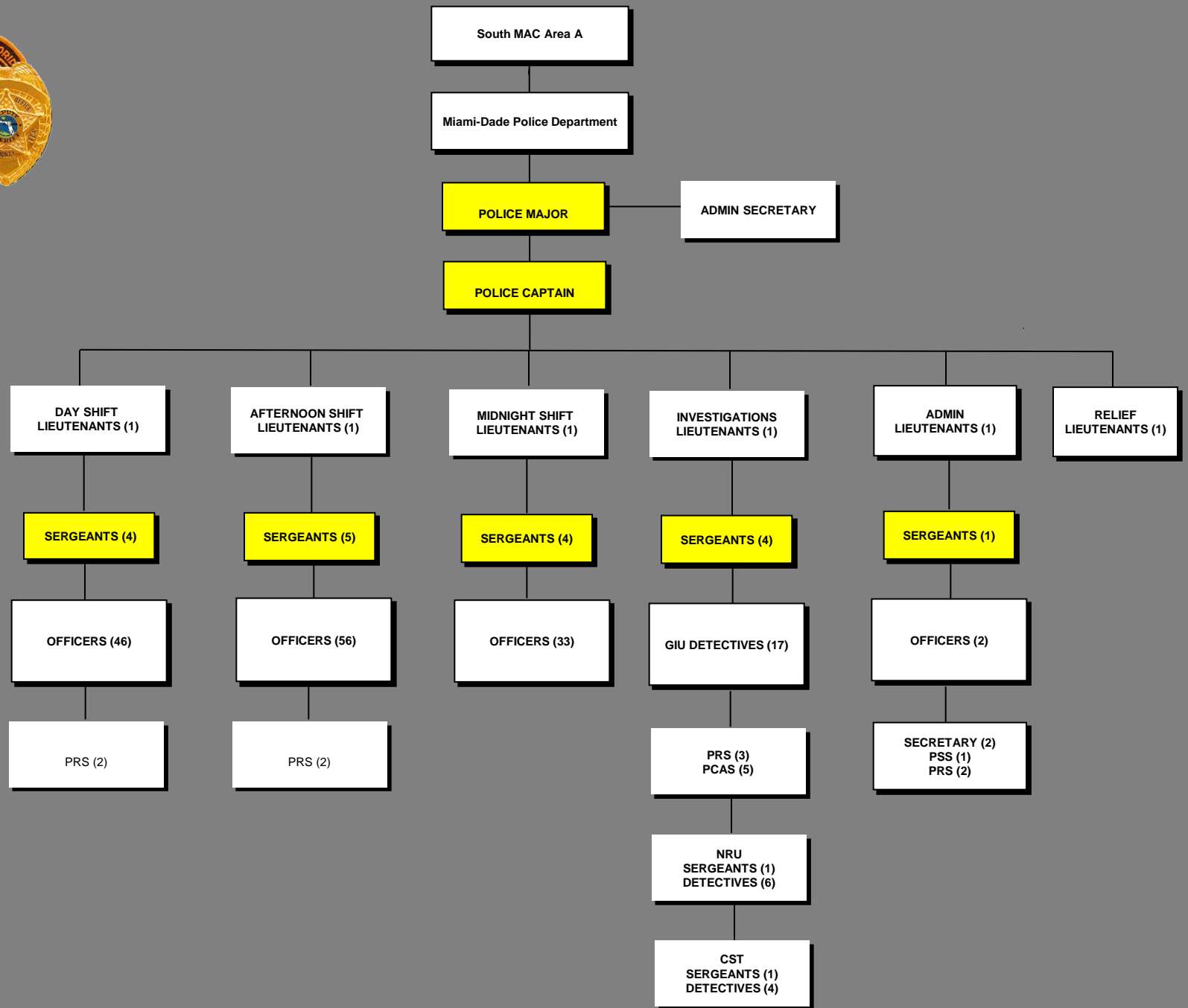
Enhanced Staffing

The following table represents an example of an enhanced staffing level.

This staffing recommendation includes a **crime suppression team** and **neighborhood resource units** to service the area.

• Major	1
• Captain	1
• Lieutenants	6
• Sergeants	14
• Detective Unit Sergeants	6
• Officers	137
• Detectives	27
Total Sworn	192

• PSA's	0
• PSS	1
• Admin Secretary	1
• Secretary	2
• PRS	9
• PCAS	5
Total Non-Sworn	18



Shift Configuration – Enhanced Staffing

South MAC Area A
Estimated Personnel Costs for FY 2014/2015
Recommended ENHANCED Staffing

Classification	#	Avg. Cost	Total
Police Major	1	\$175,853	\$175,853
Police Captain	1	\$198,666	\$198,666
Police Lieutenant	6	\$168,155	\$1,008,930
Police Sergeant	14	\$148,219	\$2,075,066
Detective Unit Sergeant	6	\$148,469	\$890,814
Police Detective	27	\$121,421	\$3,278,367
Police Officer	137	\$121,171	\$16,600,427
COPS	0	\$0	\$0
SUB-TOTAL SWORN	192	-----	\$24,228,123
Public Service Aide	0	\$73,284	\$0
Police Records Specialist	9	\$62,739	\$564,651
Police Crime Analyst Specialist	5	\$86,673	\$433,365
Office Support Specialist	0	0	\$0
Data Entry Specialist	0	\$0	\$0
Police Station Specialist	1	\$74,492	\$74,492
Administrative Secretary	1	\$71,828	\$71,828
Secretary	2	\$70,617	\$141,234
SUB-TOTAL NON-SWORN	18	-----	\$1,285,570
Marked Vehicles	151	\$8,242	\$1,244,542
Unmarked Vehicles	41	\$6,333	\$259,653
PSA Vehicle	0	\$6,283	\$0
Motorcycle	0	\$8,169	\$0
SUB-TOTAL VEHICLES	-----		\$1,504,195
General Overtime	190	\$6,861	\$1,303,590
SUB-TOTAL OVERTIME	-----		\$1,303,590
Local Patrol Subtotal w/ Overtime			\$28,321,478
5.43% contract support fee	-----		\$1,537,856
EST. MIN. PATROL COST	-----		\$29,859,334
<i>* All costs are based on estimated average salaries and include Fringe, longevity costs for FY 2014-2015.</i>			
<i>* Personnel costs do not include contractual pay adjustments</i>			
<i>2014/15 estimate OT average for sworn based on budget projections and subject to change. Per FAB</i>			
SL 10-13-2014			



Optional Services

The city may elect to contract for these services

- Marine Patrol
- Motorcycle Patrol
- Special Events Unit
- Drug Abuse Resistance Education - D.A.R.E.
- School Crossing Guard Program



Police Patrol Contract Issues

- 3 year initial contract
- Transition period of no less than 12 months
- Major will serve as daily liaison to the City Manager
- City Manager will set local police priorities including quality of life issues
- City identifier will be placed on marked police vehicles, one uniform sleeve and above/near name plate
- City may maintain at their own cost a location for MDPD personnel
- Continual collection of calls for service data, and other related statistics by MDPD

ANY QUESTIONS?