



RER/DERM

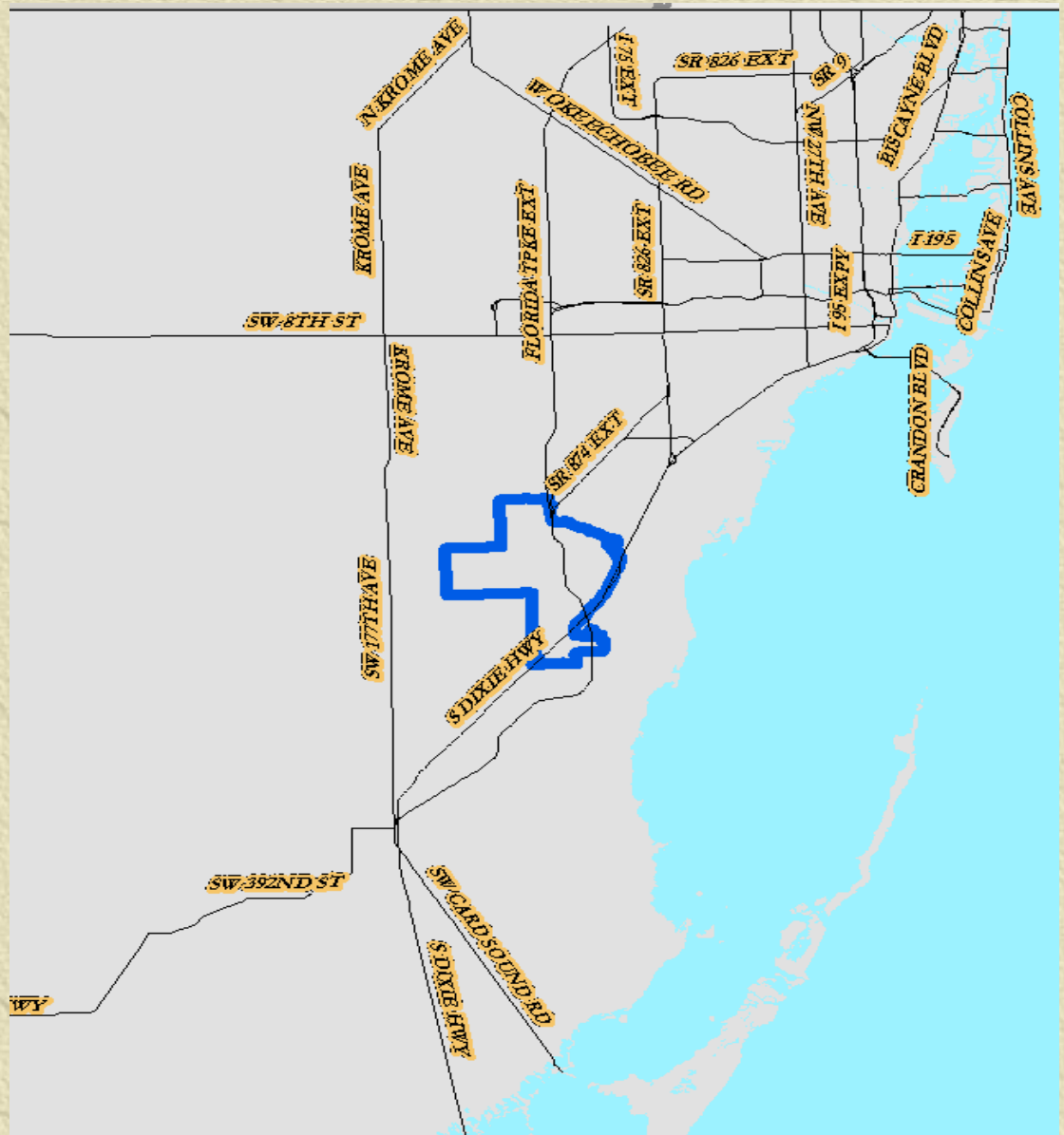
Regulatory and Economic Resources/Division of Environmental
Resources Management

**Protecting our
Environment
for Present and
Future Generations**

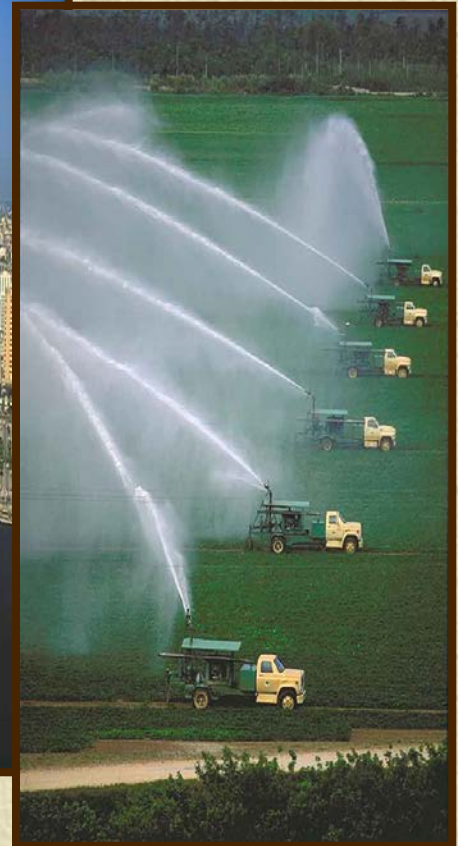
DERM's Mission

The Division of
Environmental
Resources Management
is responsible for
protecting,
conserving,
restoring,
enhancing,
and managing
the air, water and
land resources of
Miami-Dade County.





**Chapter 24 of the Code of
MDC (*“Environmental
Protection Ordinance”*)
Covers All
Unincorporated and
Municipal Areas of
Miami-Dade County**



Environmental Issues Affecting Quality of Life

- ✦ Water Quality
- ✦ Air Quality & Stratospheric Ozone Protection
- ✦ Natural Resource Protection & Restoration
- ✦ Tree Canopy
- ✦ Stormwater Management
- ✦ Proper Management and Disposal of Wastes

DERM's Authority in Municipalities Pursuant to the Environmental Protection Ordinance Chapter 24

- ✧ **Environmental Plan Review**
- ✧ **Development Orders**
 - ✧ **Zoning Actions**
 - ✧ **Platting Actions**
 - ✧ **Occupancies**
- ✧ **Pollution Prevention & Control**
- ✧ **Industrial Pretreatment**
- ✧ **Resource Protection, Management
& Monitoring**
- ✧ **Environmental Violations**
- ✧ **Enforcement**

Municipal Responsibilities



- ✦ Municipality shall not issue development orders and certificates of use and occupancy prior to the project obtaining DERM approval
- ✦ Municipal development order or building permit potentially declared null and void
- ✦ Enforcement actions may be taken - Notice of Violation (NOV); penalties to \$25,000; inclusion in Government Facilities Report

Environmental Plan Review

The Environmental Plan Review Programs' main responsibilities are to review building permits, Certificates of Use & Occupancy, and Municipal Occupational License Application, to ensure compliance with Federal State, and County environmental protection laws.

DERM's Plan Review includes

- ✧ **Potable Water and Wastewater Disposal**
- ✧ **Sanitary Sewer Capacity Allocations**
- ✧ **Land uses within the Wellfield Protection Areas**
- ✧ **Hazardous materials/waste management**
- ✧ **Presence or possible generation of air pollutants, including asbestos**
- ✧ **Stormwater management**
- ✧ **Floodplain management (unincorporated areas only)**
- ✧ **Protection of Natural Resources (Trees, Wetlands, Forest Communities, Coastal Zone Management, etc.)**

Development Orders

DERM reviews and approves or disapproves all development orders.

This includes the following:

- ✦ Zoning Actions**
- ✦ Platting Actions (Land Subdivision)**
- ✦ Building Permits**
- ✦ Building Occupancies (Residential and Nonresidential)**
- ✦ Municipal Occupational Licenses**

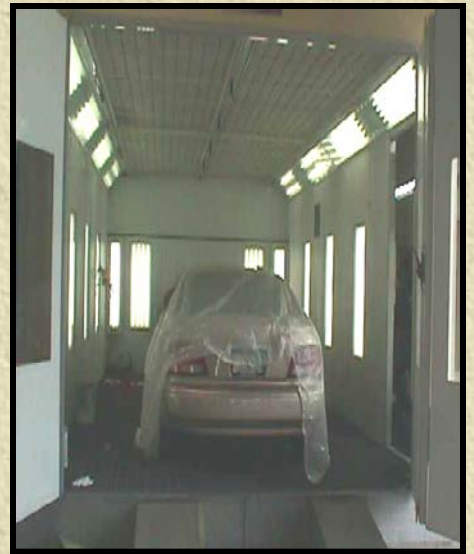
Pollution

Prevention/Pollution Control

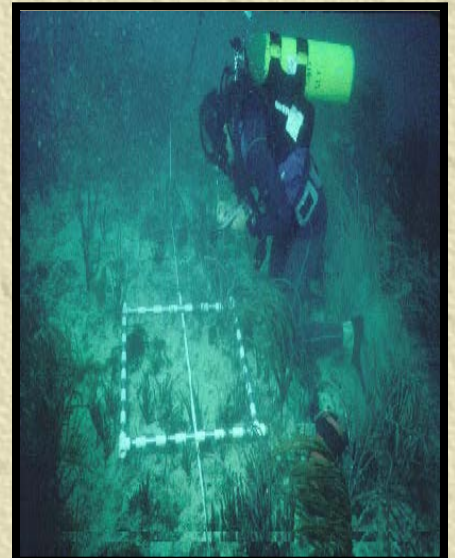
- ✦ Ensure that businesses and governments properly handle, treat, and dispose of hazardous materials in a safe manner
- ✦ Respond to chemical emergencies
- ✦ Ensure clean-up of contaminated areas
- ✦ Issue operating permits

Examples of Facilities That Require Operating Permits

- ✦ Restaurants
(grease traps)
- ✦ Paint & Body Shops
- ✦ Gas Stations
- ✦ Printing Facilities
- ✦ Operations that Recharge Refrigerants
- ✦ Marine facilities



Resource Protection, Management & Monitoring



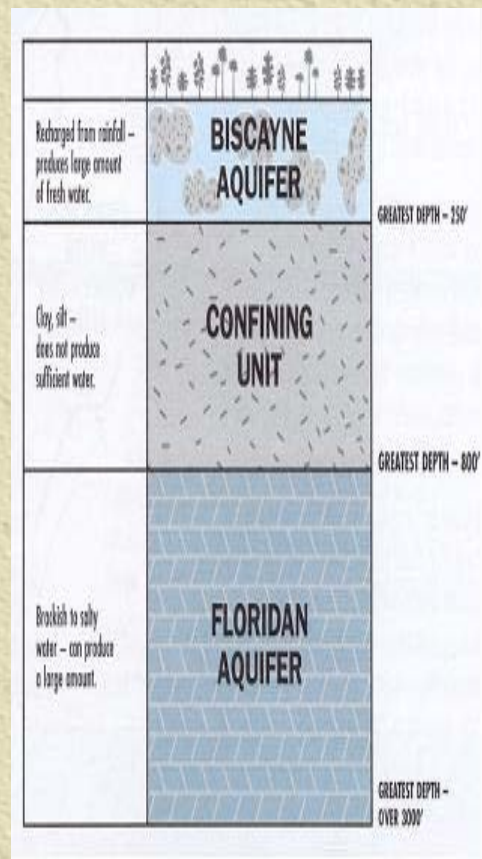
The Biscayne Aquifer

- ✦ Sole Source of Drinking Water

- ✦ Transmissive, sponge-like Limestone

- ✦ Close to the surface

- ✦ Susceptible to pollution

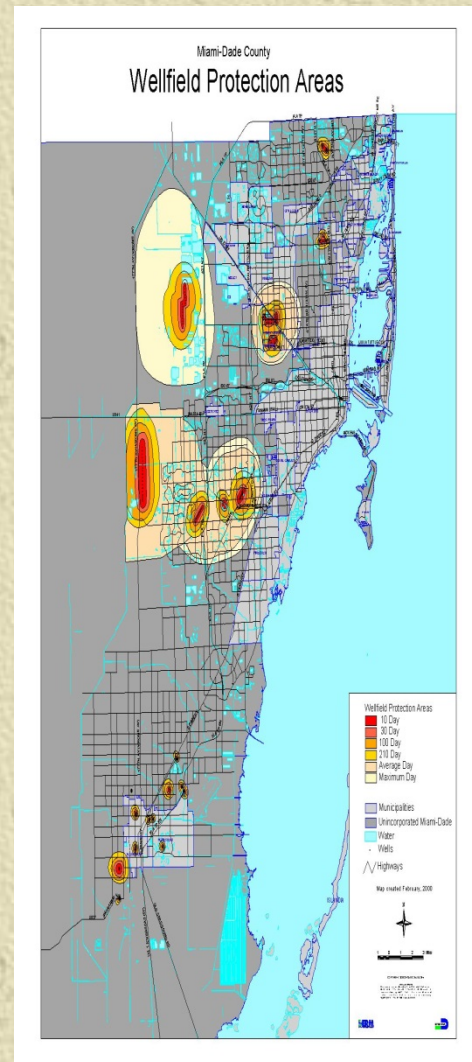


Drinking Water Protection

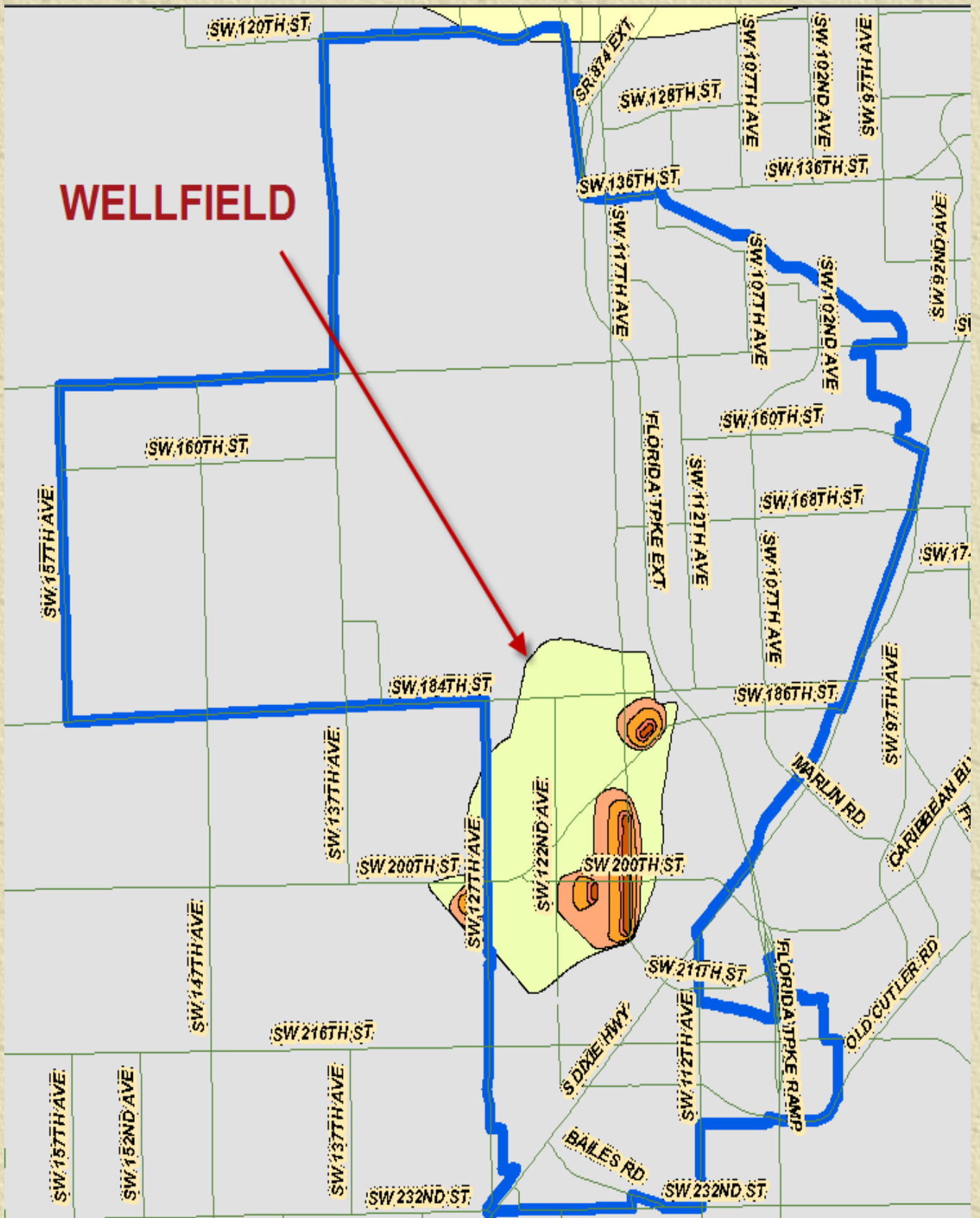
- ✧ Pursuant to Chapter 24-12.1, DERM regulates land uses within wellfield protection areas

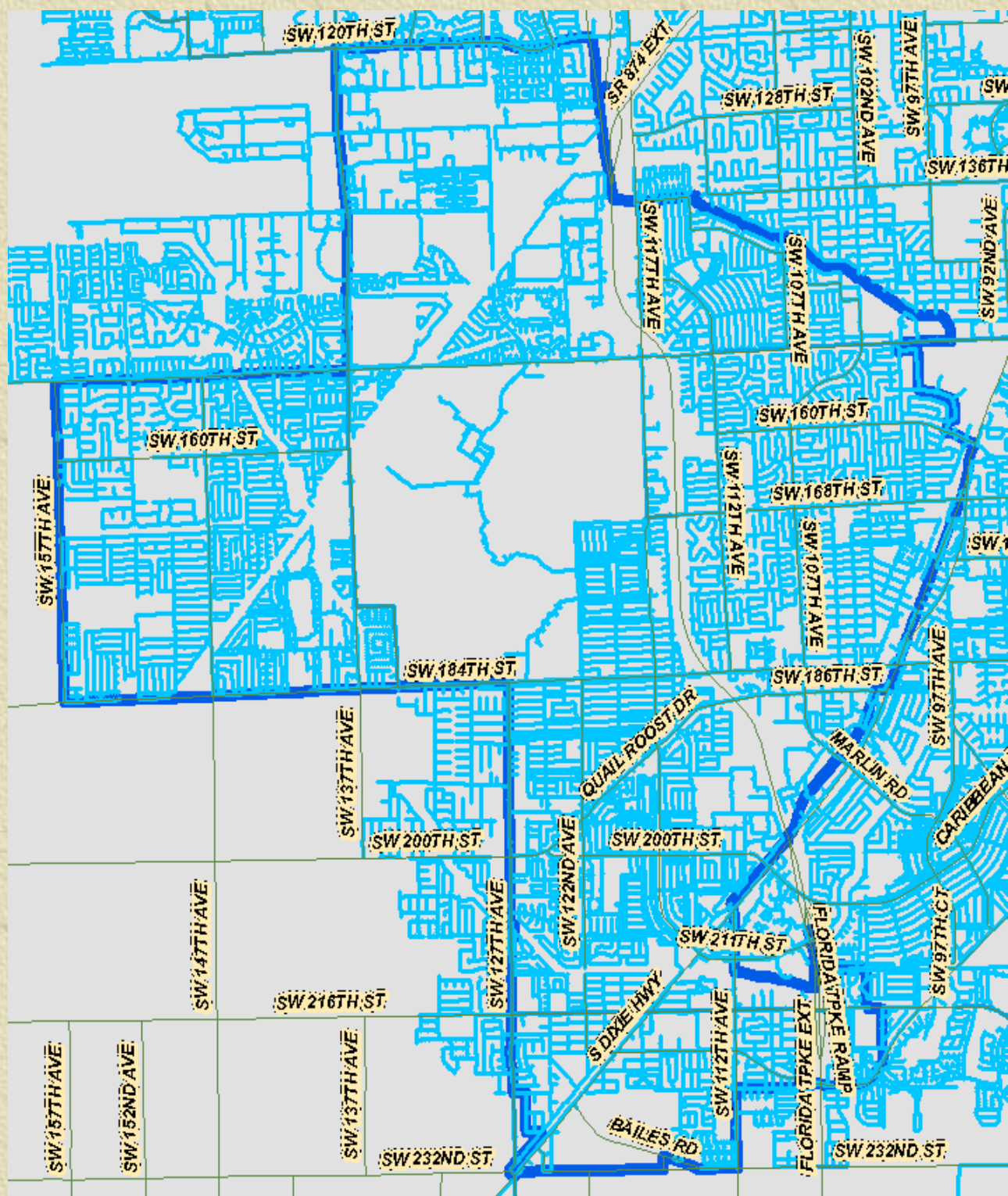
WELLFIELD PROTECTION AREAS

- ✧ **Basic:** No use, handling or storage of hazardous materials or waste.
- ✧ **Average:** Storage of hazardous materials, but no non-domestic liquid wastes can be generated.
- ✧ **Maximum:** No current restrictions



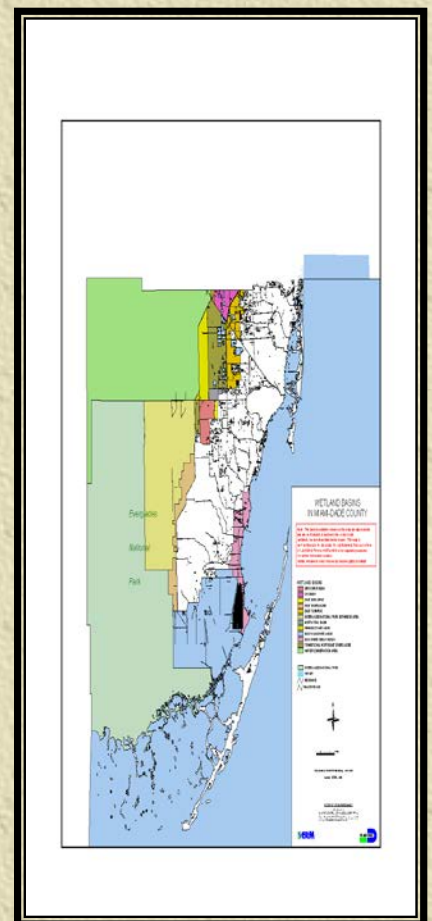
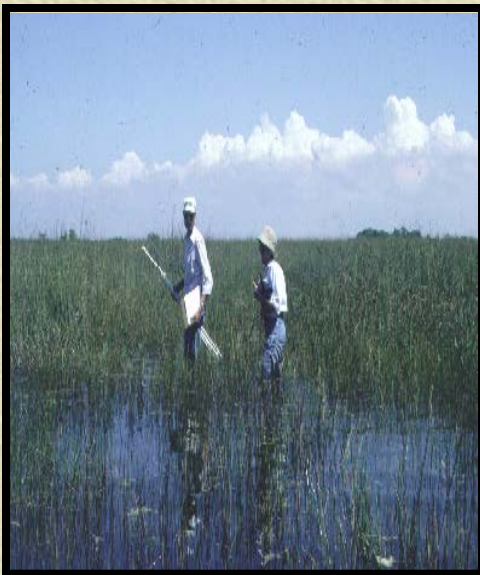
WELLFIELD



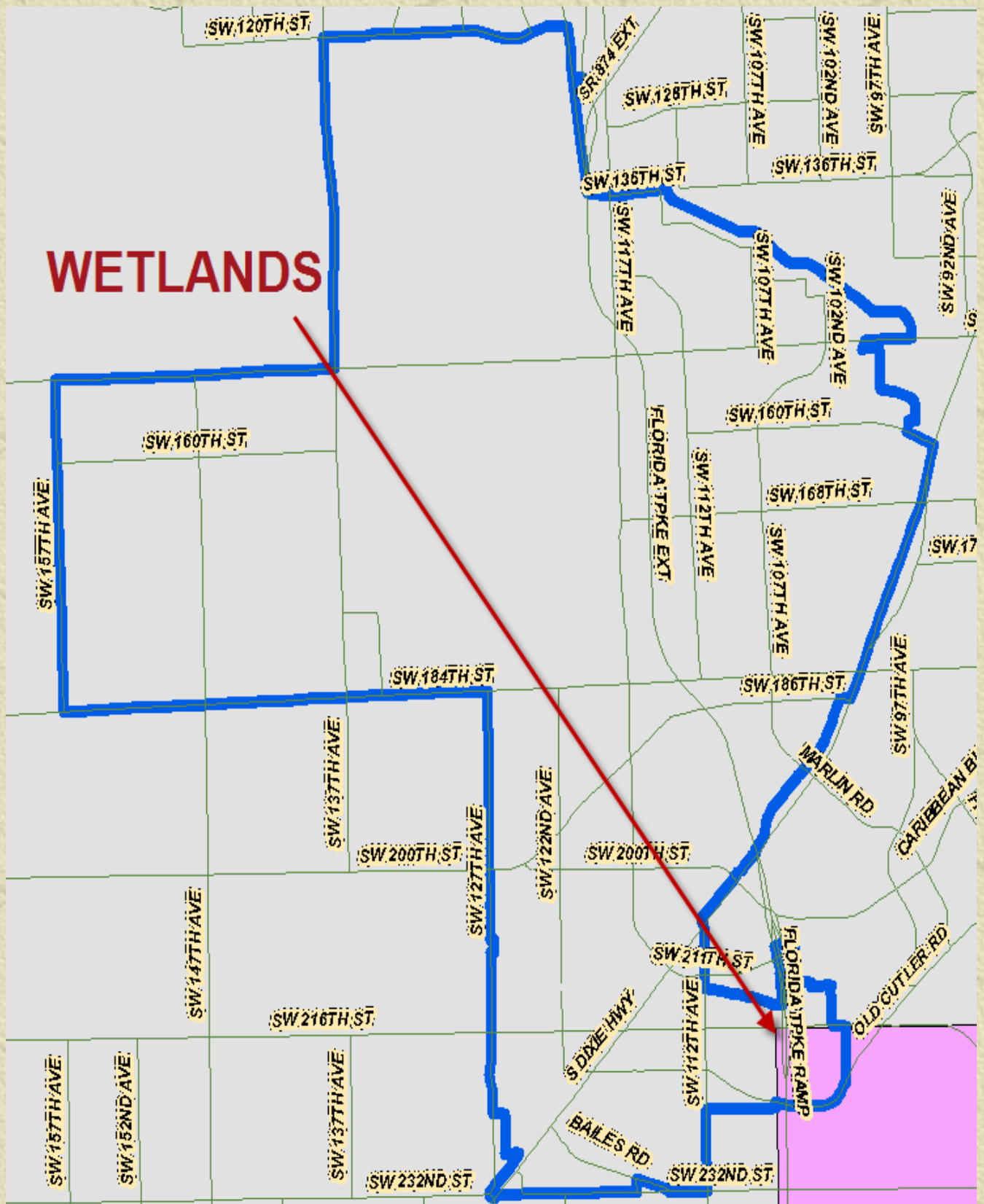


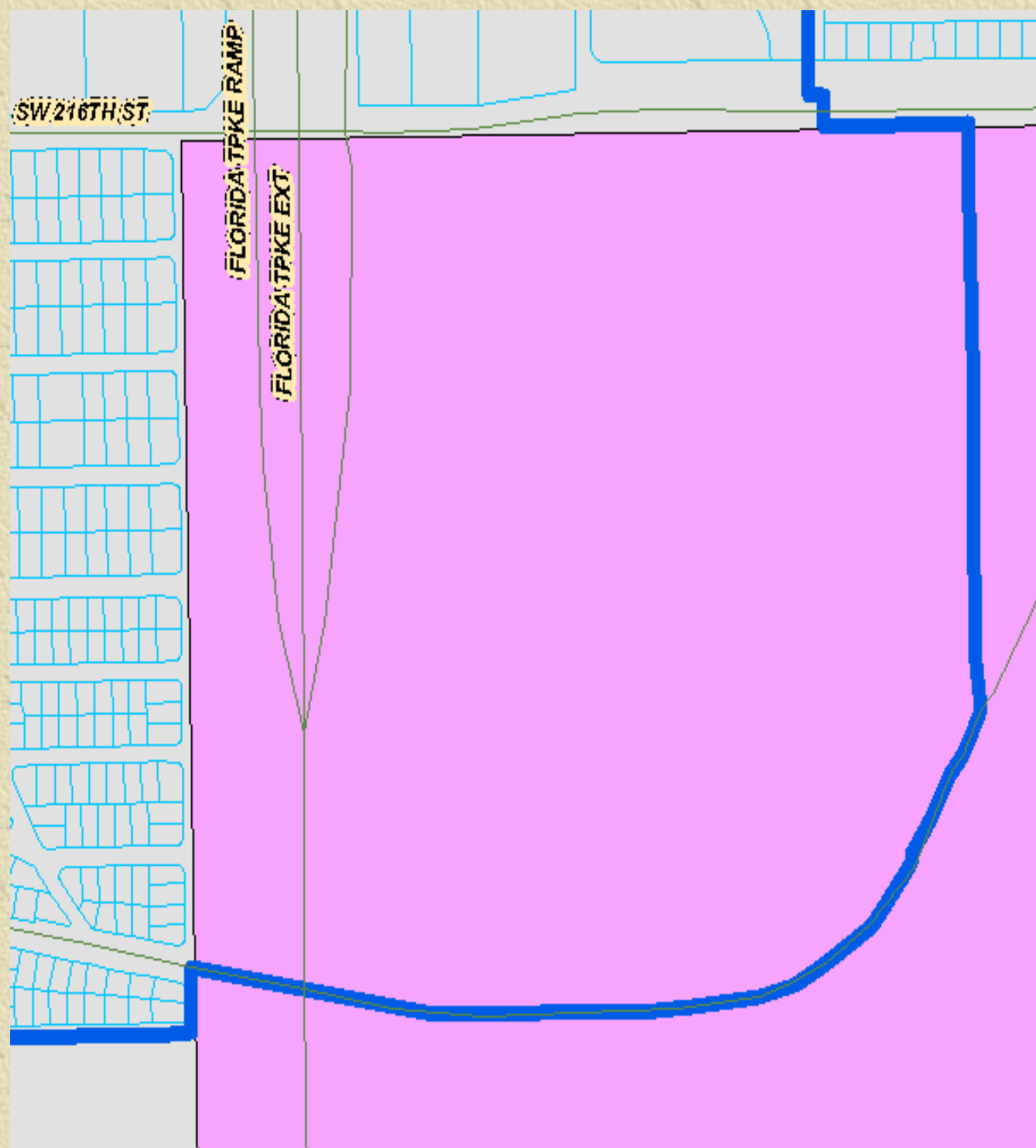
Freshwater Wetlands Class IV Permitting

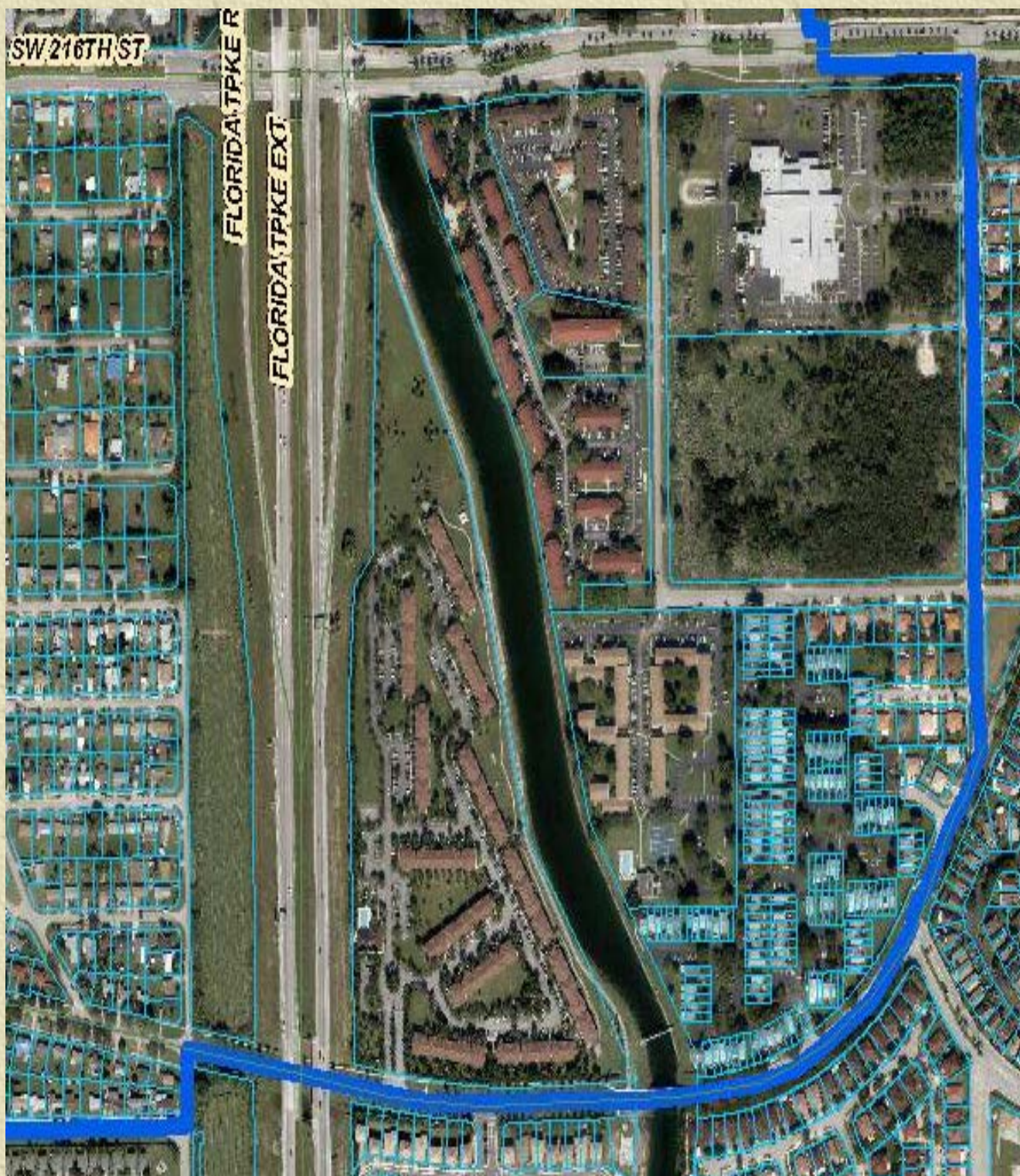
✦ Types of Projects: Dredging, Filling, Rock Mines, Rock Plowing, Clearing, Farming



WETLANDS



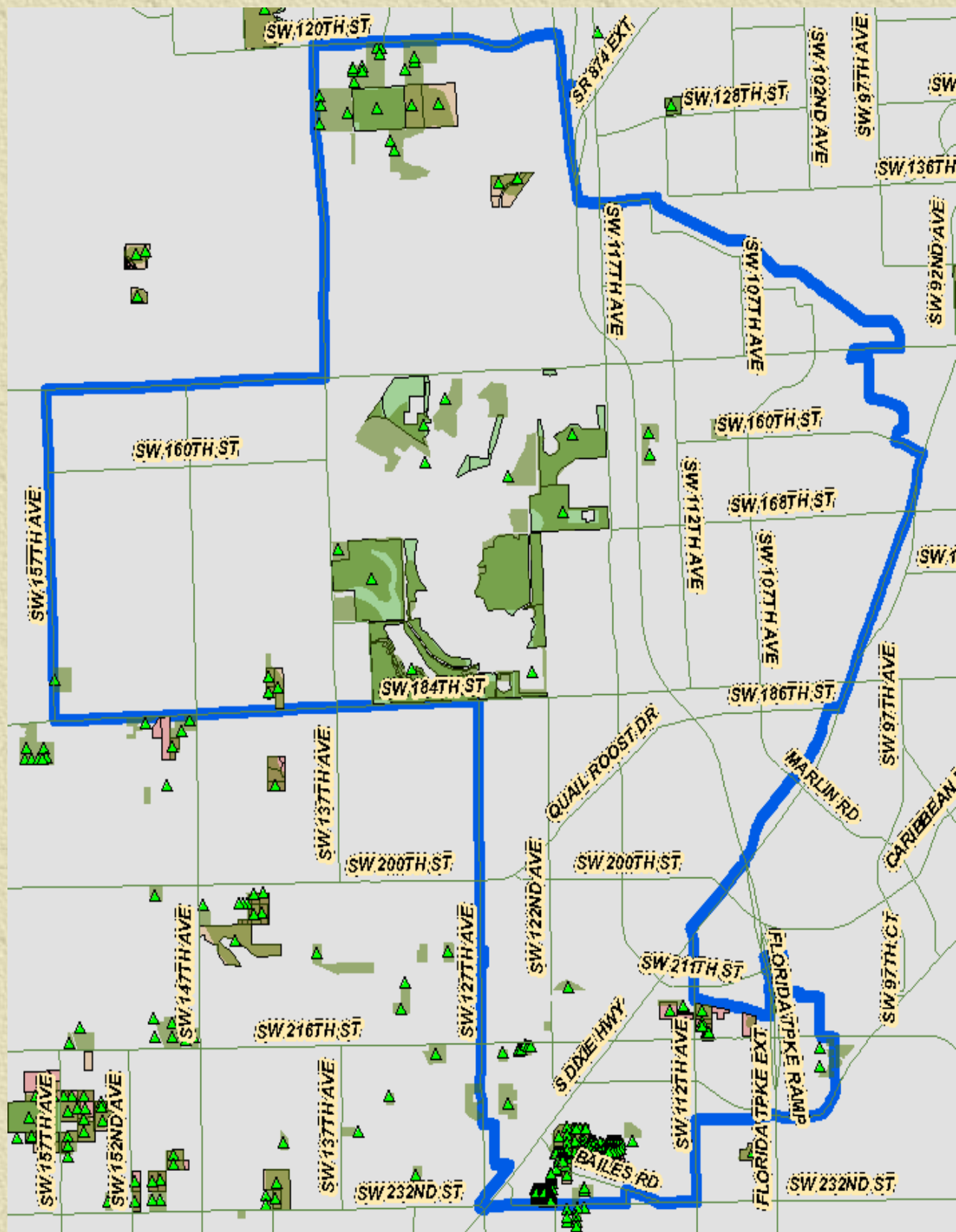




Natural Forest Communities

- ✦ Dominated by native species (trees, shrubs and groundcover).
- ✦ Includes pine rockland and hammocks.





A Permit for Tree Removal or Relocation is Required for

- ✦ The removal of any size (regular or specimen) tree on the right-of-way



- ✦ Removal of specimen-size trees on single-family residential & adjacent ROW property (already built)



- ✦ Removal of any regular or specimen-size tree on a vacant lot

Trees

Each Municipality Must have a Tree Protection Ordinance or Comply with and Allow Enforcement of the County Tree Ordinance

- ◆ The following Municipalities currently have their own tree ordinances:

Coral Gables

Miami

North Miami Beach

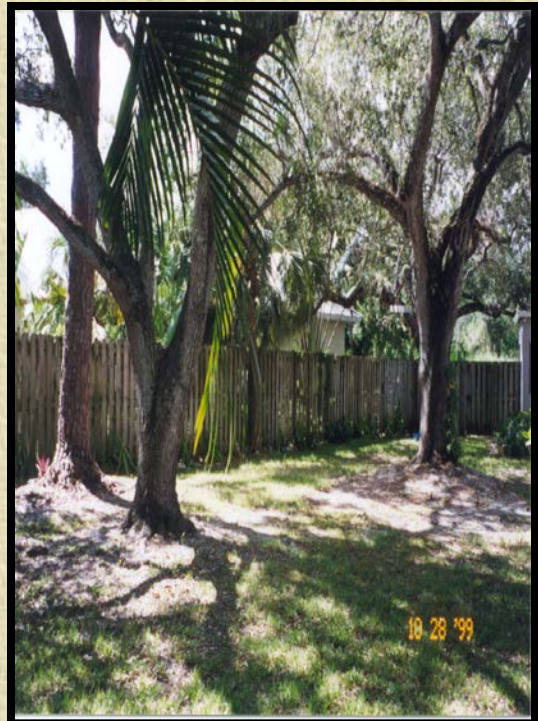
North Miami

Miami Lakes

Miami Springs

Pinecrest

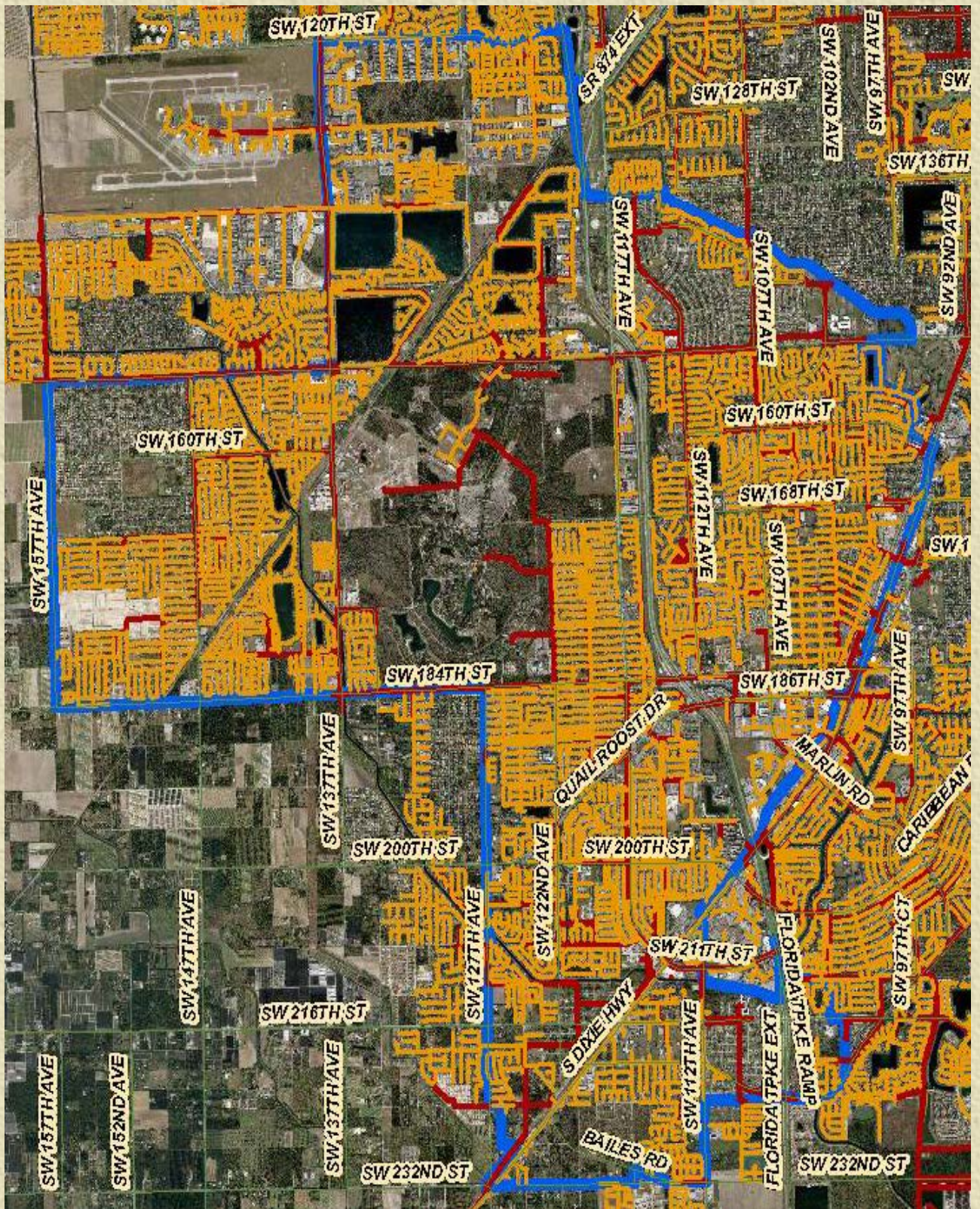
South Miami

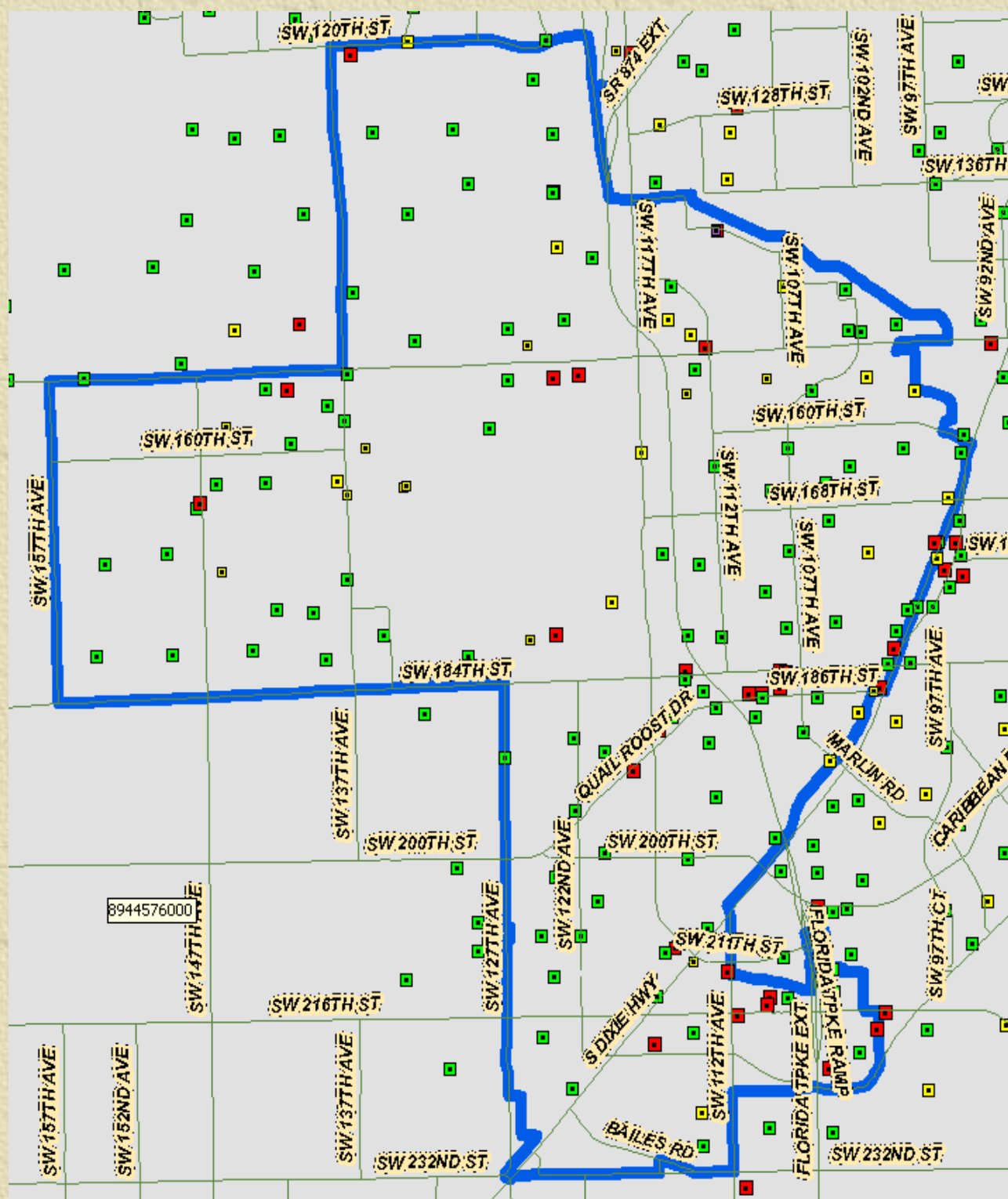


Sewage

- Overflowing Manholes
- Pump Stations
- Failed Drainfields
- Open Clean-outs
- Open Septic Tanks
- Portable Toilet Leaks
- Cross Connections
- Interconnections
- Discharge of Fats, Oil, Grease

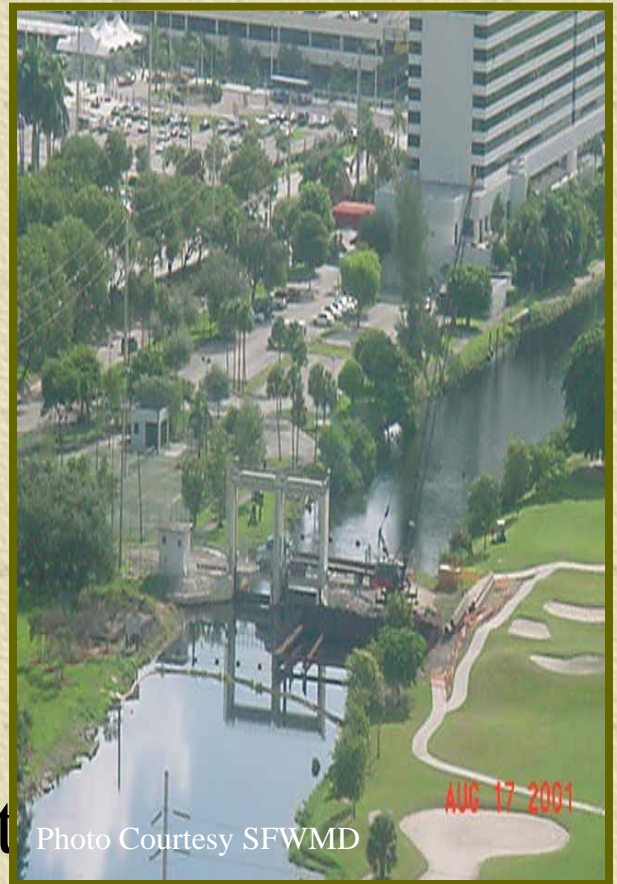






Water Management

- ✦ DERM has Countywide authority to regulate any activity that impacts surface waters
- ✦ DERM has a permitting program that addresses drainage requirements for new development and roads/rights-of-way



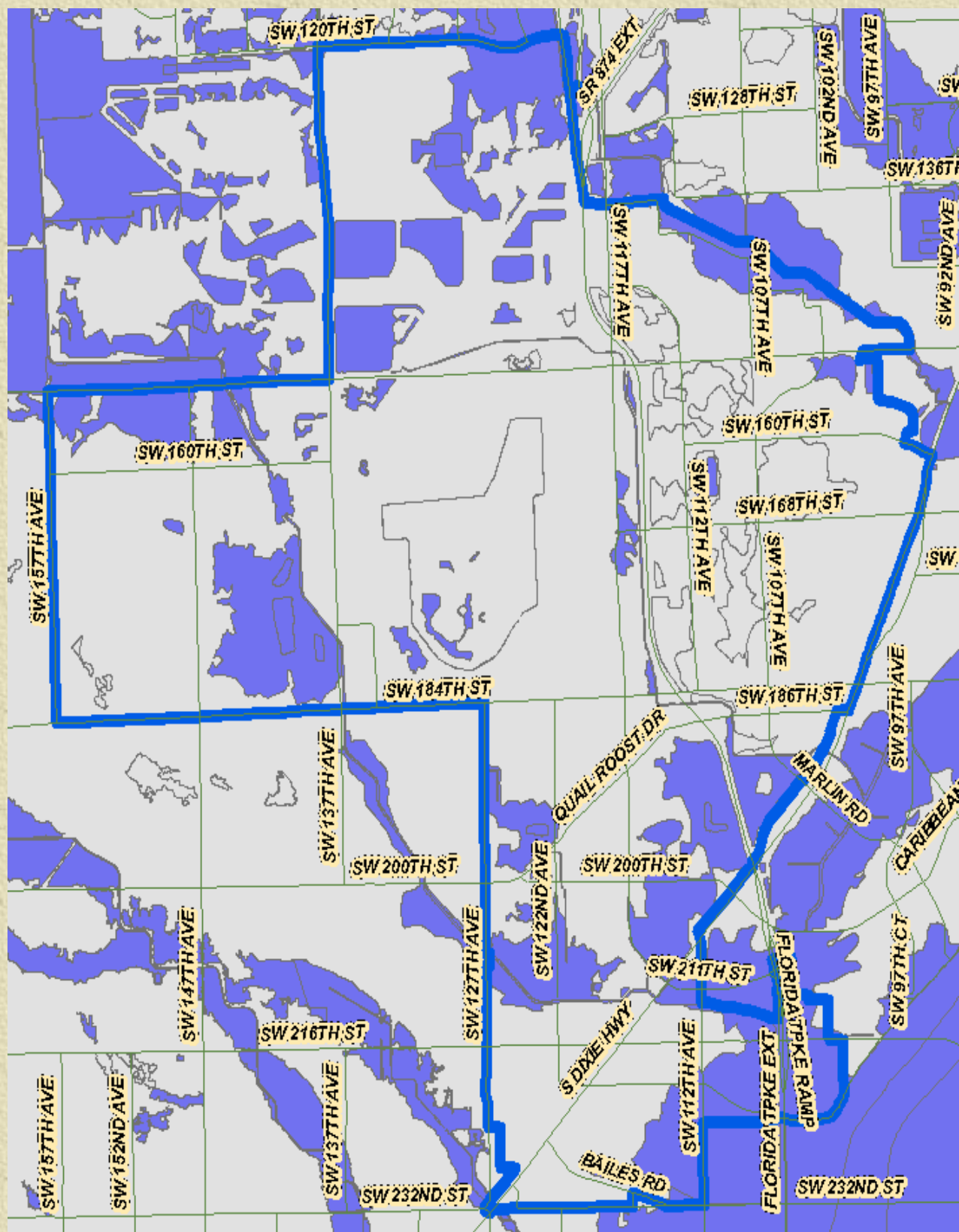
DERM Retains Countywide Authority for

- ✦ Drainage permitting, except for single lots, or total on-site drainage systems with <2 acres of impervious surface
- ✦ Environmental drainage reviews required for single lots or total onsite drainage systems with <2 acres of impervious surfaces
- ✦ Dewatering
- ✦ Secondary canal operation and maintenance
- ✦ Protection against saltwater intrusion



New Municipality's Water Management Responsibilities

- ✦ Create a funding source for stormwater management activities
- ✦ If city has secondary canals, enter into agreement with County for maintenance
- ✦ Join the National Flood Insurance Program
- ✦ Acquire NPDES permit from the State for stormwater discharges into surface waters
- ✦ Develop a stormwater management master plan that maintains a level of service for future development



Environmental Quality Control Board (EQCB)

✦ Hears requests for appeals, variances and extensions of time for Compliance with Chapter 24 or any administrative decisions of DERM.



RER/DERM

Regulatory and Economic Resources/Division of Environmental
Resources Management

**Protecting our
Environment
for Present and
Future Generations**
