

Moving to a New Normal Dashboard

August 20, 2020




Daily Summary

Moving to a New Normal Dashboard Summary

1) Downward trajectory of documented cases within a 14-day period

As of : **08/20/2020**

New Reported Positives: **1,090**

Trend: 

2) 14 consecutive days where positive test rate is below 10% on average

Daily Positive Rate: 9.65%

14-day Average: 11.74%

Cumulative Positive Rate: 19.45%

Total Positives: 148,196

Total People Tested: 761,882

JHS Positive Rate: 14%

3) 30% Total and ICU Bed Capacity Available*

As of : **08/20/2020**

COVID non-ICU Admissions: 840

Available non-ICU beds: 5,360

COVID ICU Admissions: 296

Available ICU beds: 1,016

4) Miami-Dade Fire Rescue COVID Calls

Calls for: **08/19/2020**

Suspected COVID-19 Calls: 76

5-day Average: 82

5) Plan in place to monitor and manage hospital capacity and vulnerable

In Progress

6) Lab Turnaround Time Reported by FDOH

Cases Reported on: **08/18/2020**

less than 3 days: 57.3%

4 - 7 days: 35.9%

7 or more days: 6.9%

7) Countywide contact tracing program with a target headcount of 100 tracers by May 31

Complete. As of 7/30, there are 350 contact tracers in place

8) Sector safety guidelines developed and communicated

In Progress

9) Plan in place to open public transit that protects workers and commuters

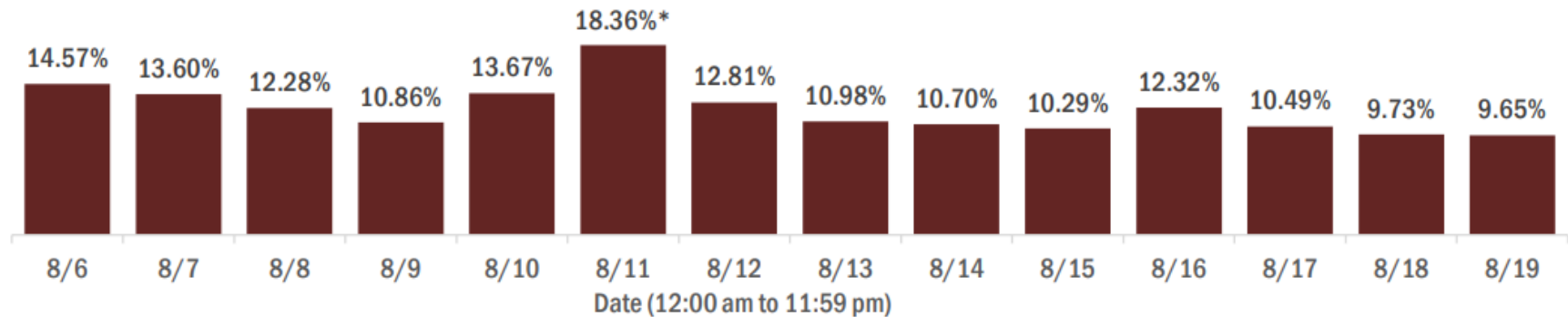
In Progress

** Percentage represents the number of COVID positive patients utilizing hospital beds; does not include the 1,214 acute care and ICU beds that may be converted*

COVID-19 Daily Positive Rate

Percent positivity for new cases in Florida residents

These counts include the number of Florida residents for whom the department received PCR or antigen laboratory results by day. This percent is the number of people who test positive for the first time divided by all the people tested that day, excluding people who have previously tested positive.



* Includes a one-time historical data submission from a laboratory newly enrolled in the Department's electronic laboratory reporting (ELR) process. The percent positivity for Dade County on 8/11 excluding the historical data submission was 12.4%.

14-day average: 11.74%

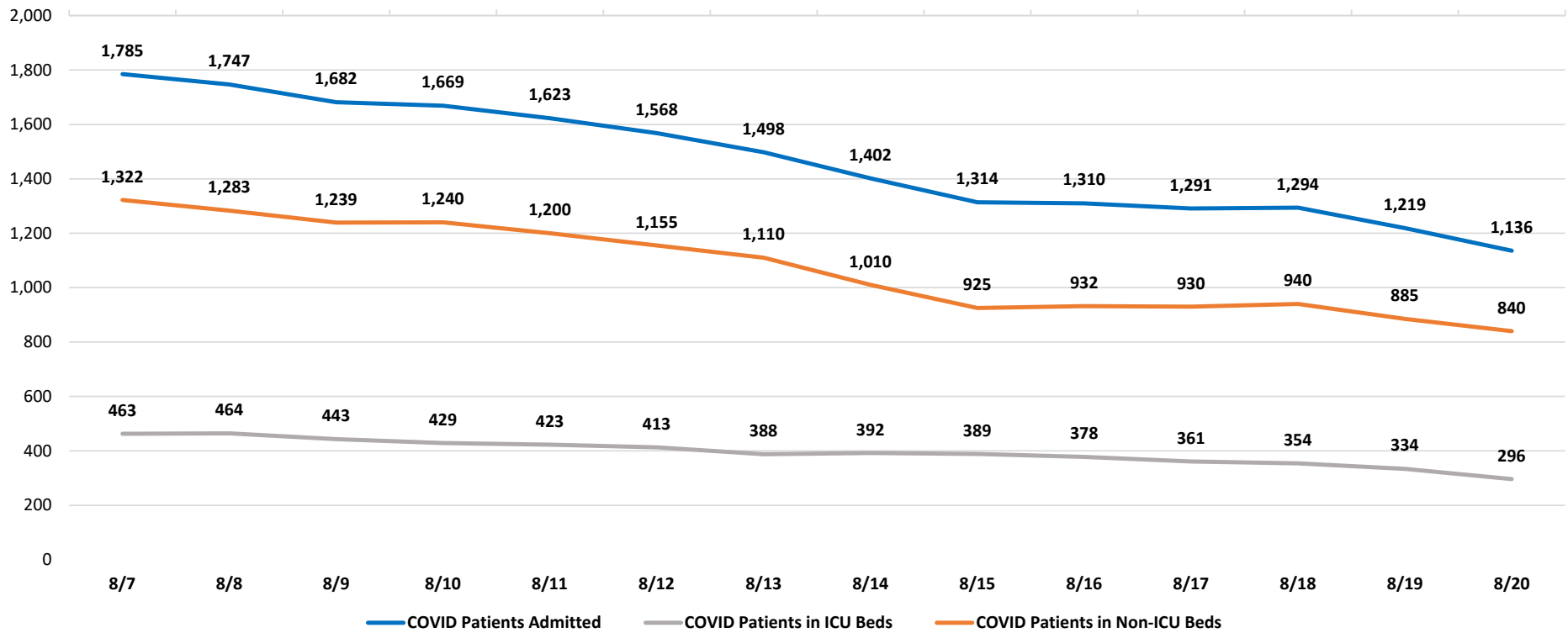
Note: The 14-day average is calculated using a positivity rate of 12.44% for tests reported on 8/12 to account for the backlog of cases reported on such date

Data Source: The daily positivity rate as reported by the State of Florida on the "County Report"

http://ww11.doh.state.fl.us/comm/partners/covid19_report_archive/county_reports_latest.pdf

COVID-19 Admitted Patients

COVID Patients Admitted



Data Source: Self-reported by hospitals as required by Emergency Order 18-20

DAILY COVID-19 HOSPITAL STATISTICAL REPORT

as of: 08/20/2020 11:14

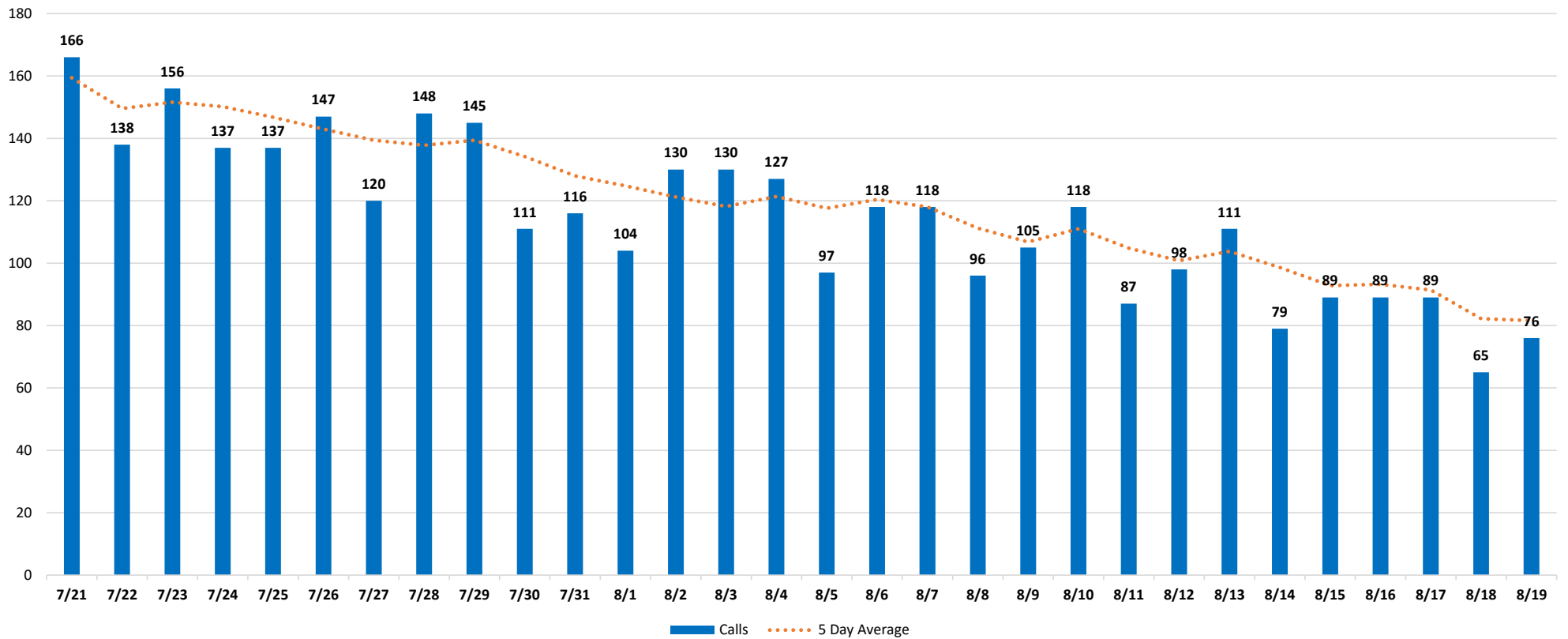
	08/07/2020	08/08/2020	08/09/2020	08/10/2020	08/11/2020	08/12/2020	08/13/2020	08/14/2020	08/15/2020	08/16/2020	08/17/2020	08/18/2020	08/19/2020	08/20/2020
Available Beds														
Acute Care Beds	5,283	5,283	5,285	5,284	5,227	5,282	5,284	5,366	5,364	5,364	5,362	5,363	5,363	5,360
Beds that may be converted to Acute Care Beds	767	767	767	772	800	769	769	769	769	769	766	763	760	759
ICU Beds	1,002	1,002	1,001	1,002	981	991	1,012	1,014	1,014	1,014	1,014	1,015	1,016	1,016
Beds that may be converted to ICU Beds	458	458	457	457	443	455	475	456	455	455	455	456	456	455
Ventilators														
Ventilators available for deployment	753	745	763	759	745	779	811	789	794	796	790	785	817	811
Ventilators on standby	108	112	108	105	109	112	144	135	126	124	116	114	119	120
Respirators/Anesthesia Machines that maybe converted to Ventilators	441	441	440	441	433	441	429	441	441	441	440	440	441	439
COVID-19 Cases														
COVID Patients Admitted	1,785	1,747	1,682	1,669	1,623	1,568	1,498	1,402	1,314	1,310	1,291	1,294	1,219	1,136
COVID Patients in ICU Beds	463	464	443	429	423	413	388	392	389	378	361	354	334	296
COVID Patients in Non-ICU Beds	1,322	1,283	1,239	1,240	1,200	1,155	1,110	1,010	925	932	930	940	885	840
COVID Patients on ventilators	308	313	314	308	295	289	272	278	275	271	271	267	267	237
COVID-19 Patients														
New COVID Patients	131	102	79	82	113	100	98	76	72	65	58	93	82	67
COVID Patients Discharged	173	179	107	102	174	190	154	168	175	81	69	150	155	150

*This data has been collected and compiled based on Emergency Order 18-20, as of the time noted. The information is submitted by the respective facilities and has not been audited.

** As certain data points are clarified, information reported for prior periods may change

Miami-Dade Fire Rescue Calls

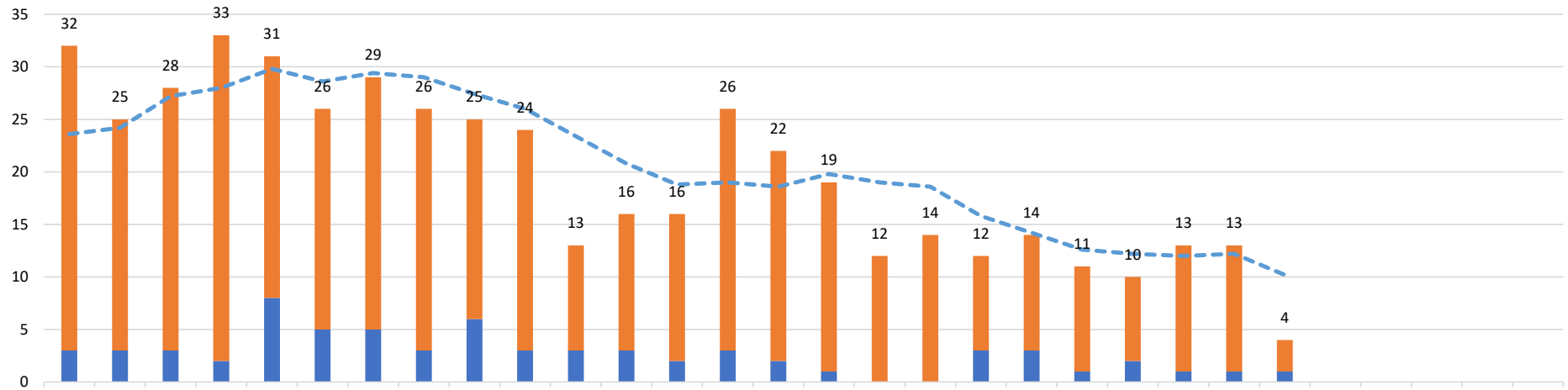
MDFR Suspected COVID-19 Calls



Data Source: Miami-Dade Fire Rescue

Medical Examiner

Deaths by Day



	7/21	7/22	7/23	7/24	7/25	7/26	7/27	7/28	7/29	7/30	7/31	8/1	8/2	8/3	8/4	8/5	8/6	8/7	8/8	8/9	8/10	8/11	8/12	8/13	8/14	8/15	8/16	8/17	8/18	8/19
Above 60	29	22	25	31	23	21	24	23	19	21	10	13	14	23	20	18	12	14	9	11	10	8	12	12	3					
Under 60	3	3	3	2	8	5	5	3	6	3	3	3	2	3	2	1			3	3	1	2	1	1	1					
Grand Total	32	25	28	33	31	26	29	26	25	24	13	16	16	26	22	19	12	14	12	14	11	10	13	13	4					
5 Day Average	23.6	24.2	27.2	28	29.8	28.6	29.4	29	27.4	26	23.4	20.8	18.8	19	18.6	19.8	19	18.6	15.8	14.2	12.6	12.2	12	12.2	10.2					

■ Under 60
 ■ Above 60
 Grand Total
 - - - 5 Day Average

An August 15th decision by the Florida Medical Examiner Commission determined that "treating physicians may certify COVID-19 deaths" so long as certain conditions are met. While this decision will expedite such process, it may result in the County's ME reporting and certifying a lower number of deaths than the State. The the administration will work closely with FDOH to ensure that the appropriate figures are reported.

Data Source: Miami-Dade Medical Examiner