

Moving to a New Normal Dashboard

September 29, 2020




Daily Summary

Moving to a New Normal Dashboard Summary

1) Downward trajectory of documented cases within a 14-day period

As of : **9/29/2020**

New Reported Positives: **632**

Trend: 

2) 14 consecutive days where positive test rate is below 10% on average

Daily Positive Rate: 6.87%

14-day Average: 4.44%

Cumulative Positive Rate: 18.48%

Total Positives: 168,978

Total People Tested: 914,455

JHS Positive Rate: 4%

3) 30% Total and ICU Bed Capacity Available*

As of : **9/29/2020**

COVID non-ICU Admissions: 236

Available non-ICU beds: 5,370

COVID ICU Admissions: 109

Available ICU beds: 978

4) Miami-Dade Fire Rescue COVID Calls

Calls for: **9/28/2020**

Suspected COVID-19 Calls: 48

5-day Average: 48

5) Plan in place to monitor and manage hospital capacity and vulnerable

In Progress

6) Lab Turnaround Time Reported by FDOH

Cases Reported on: **9/27/2020**

less than 3 days: 98.39%

other: 1.61%

7) Countywide contact tracing program with a target headcount of 100 tracers by May 31

Complete. As of 7/30, there are 350 contact tracers in place

8) Sector safety guidelines developed and communicated

In Progress

9) Plan in place to open public transit that protects workers and commuters

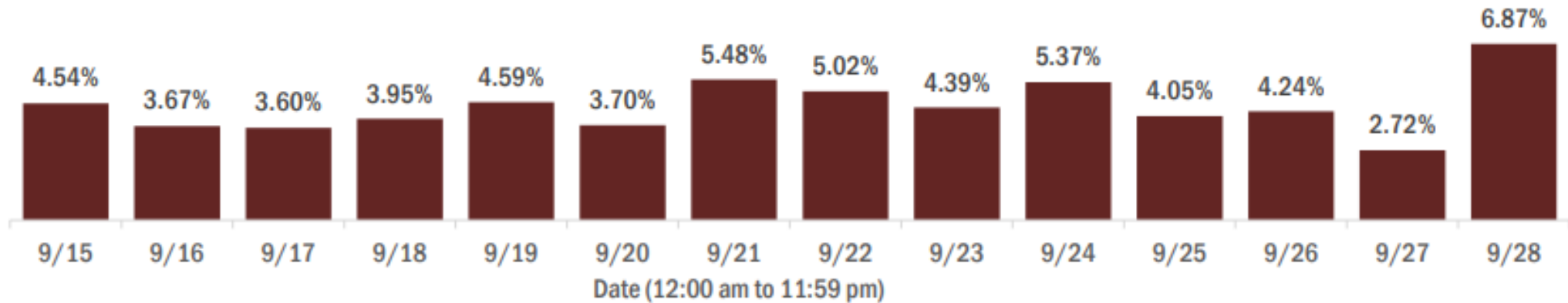
In Progress

* Percentage represents the number of COVID positive patients utilizing hospital beds; does not include the 1,220 acute care and ICU beds that may be converted

COVID-19 Daily Positive Rate

Percent positivity for new cases in Florida residents

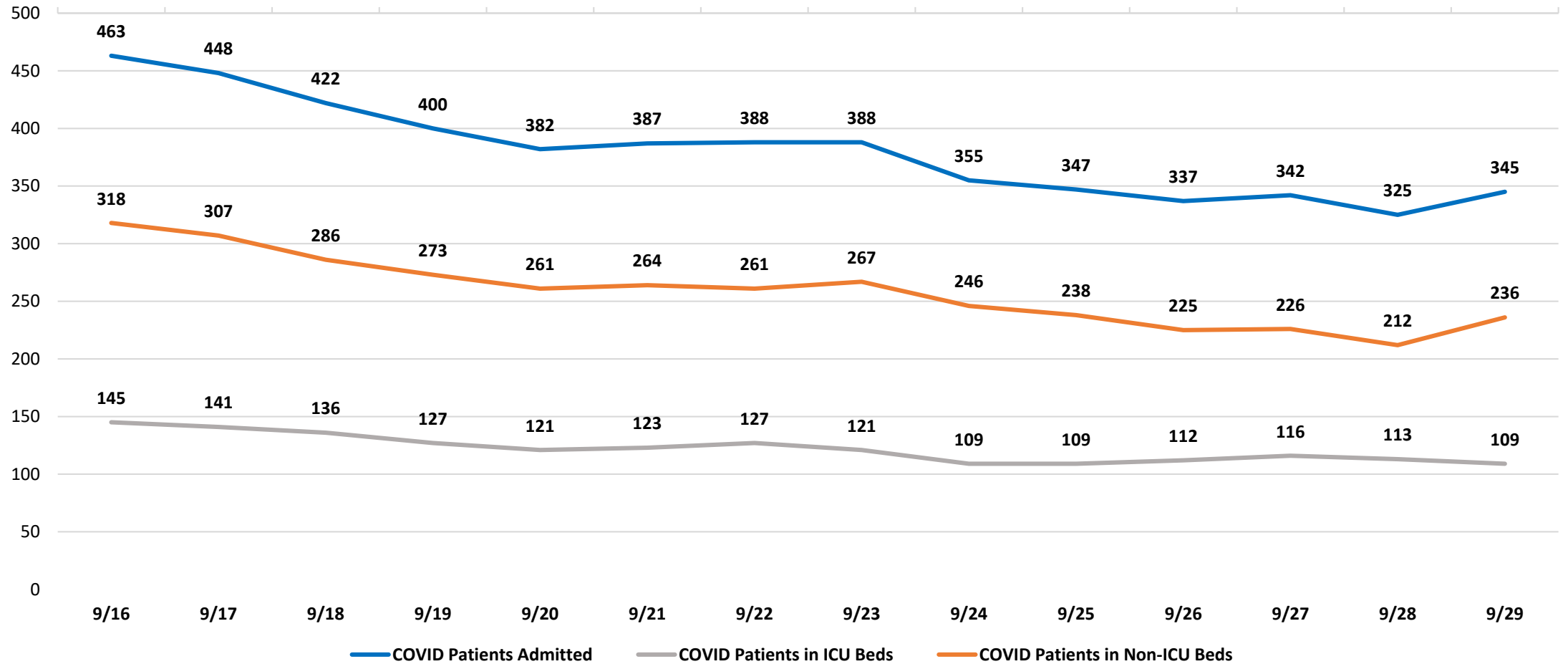
These counts include the number of Florida residents for whom the department received PCR or antigen laboratory results by day. This percent is the number of people who test positive for the first time divided by all the people tested that day, excluding people who have previously tested positive.



14-day average: 4.44%

COVID-19 Admitted Patients

COVID Patients Admitted



DAILY COVID-19 HOSPITAL STATISTICAL REPORT

as of: 9/29/2020 11:17

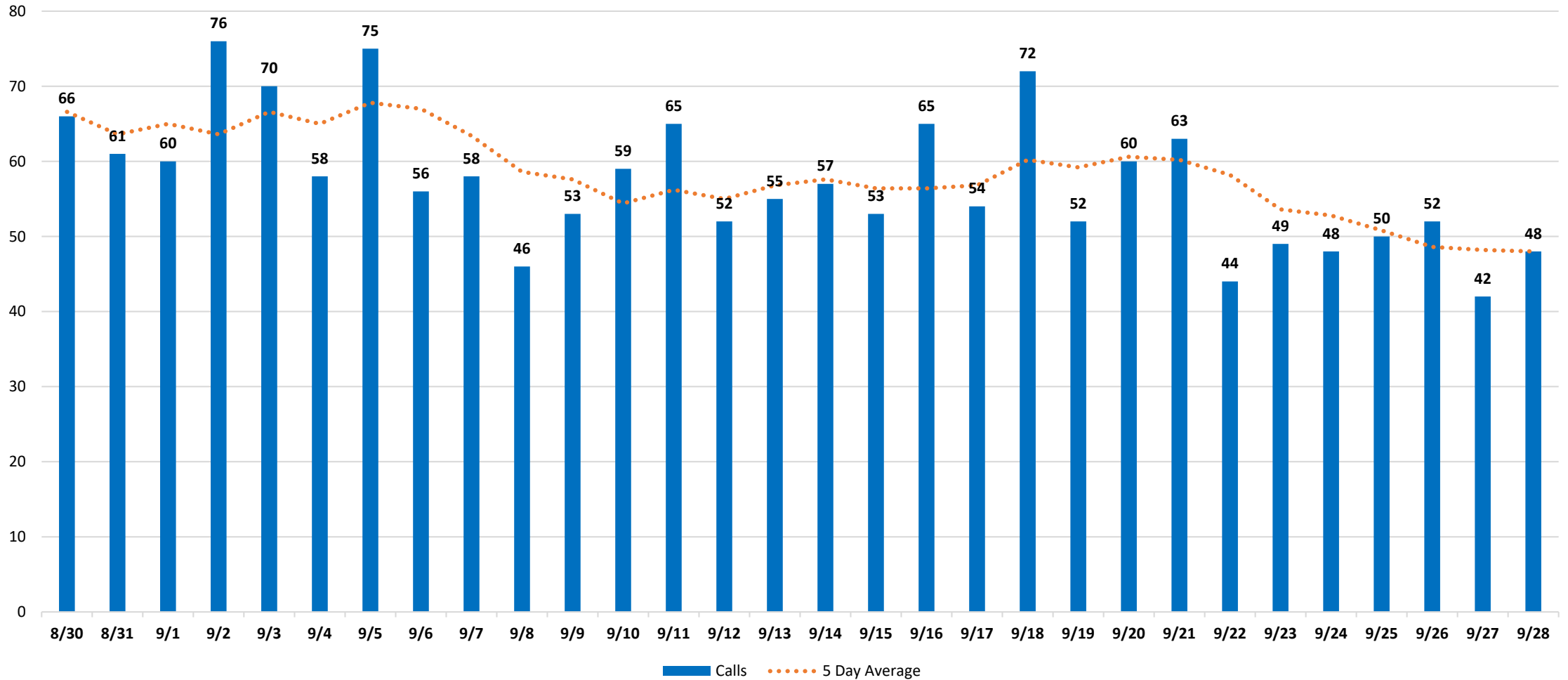
	9/16/2020	9/17/2020	9/18/2020	9/19/2020	9/20/2020	9/21/2020	9/22/2020	9/23/2020	9/24/2020	9/25/2020	9/26/2020	9/27/2020	9/28/2020	9/29/2020
Available Beds														
Acute Care Beds	5,362	5,361	5,362	5,363	5,364	5,372	5,381	5,373	5,375	5,372	5,372	5,372	5,373	5,370
Beds that may be converted to Acute Care Beds	741	740	739	734	734	741	743	744	747	747	742	742	744	740
ICU Beds	985	983	984	984	984	977	977	976	975	975	975	975	978	978
Beds that may be converted to ICU Beds	476	474	476	476	477	478	476	475	481	477	477	477	480	480
Ventilators														
Ventilators available for deployment	906	922	928	956	955	942	940	966	964	959	983	988	972	925
Ventilators on standby	148	146	140	134	139	132	133	138	144	139	150	152	145	142
Respirators/Anesthesia Machines that maybe converted to Ventilators	438	441	441	441	439	440	441	439	441	441	441	439	439	440
COVID-19 Cases														
COVID Patients Admitted	463	448	422	400	382	387	388	388	355	347	337	342	321	345
COVID Patients in ICU Beds	145	141	136	127	121	123	127	121	109	109	112	116	113	109
COVID Patients in Non-ICU Beds	318	307	286	273	261	264	261	267	246	238	225	226	214	236
COVID Patients on ventilators	118	112	106	98	97	97	89	90	80	74	67	67	69	66
COVID-19 Patients														
New COVID Patients	60	43	49	45	39	28	44	31	41	34	41	33	29	45
COVID Patients Discharged	70	78	78	63	52	29	58	58	65	56	57	36	34	43

*This data has been collected and compiled based on Emergency Order 18-20, as of the time noted. The information is submitted by the respective facilities and has not been audited.

** As certain data points are clarified, information reported for prior periods may change

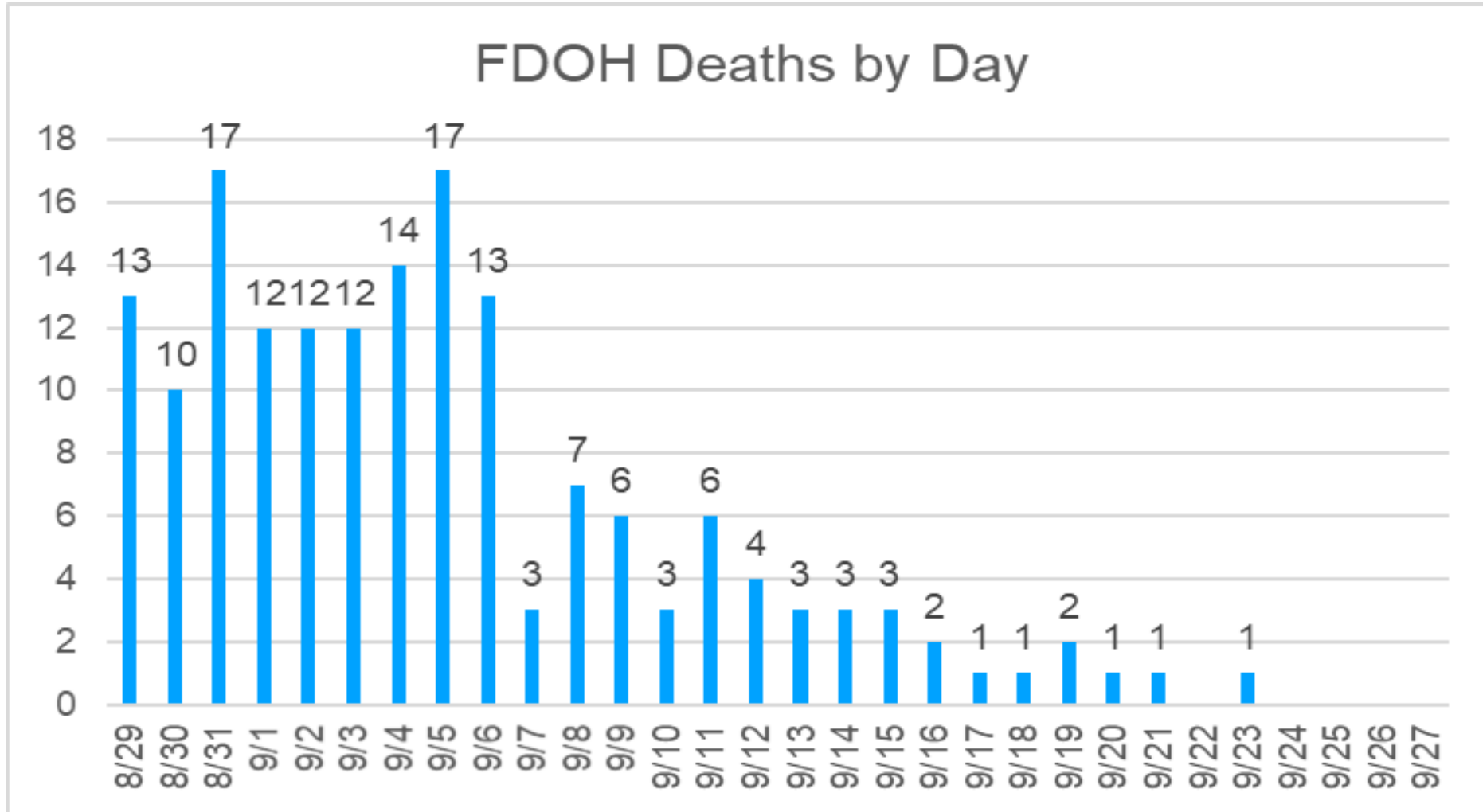
Miami-Dade Fire Rescue Calls

MDFR Suspected COVID-19 Calls



Deaths by Day

Florida Department of Health through September 26



An August 15th decision by the Florida Medical Examiner Commission determined that "treating physicians may certify COVID-19 deaths" so long as certain conditions are met. While this decision will expedite such process, it will result in the County's ME reporting and certifying a lower number of deaths. The information shown above is based on figures provided by the Florida Department of Health.

Data Source: Florida Department of Health