

Moving to a New Normal Dashboard

October 01, 2020




Daily Summary

Moving to a New Normal Dashboard Summary

1) Downward trajectory of documented cases within a 14-day period

As of : **10/1/2020**

New Reported Positives: **520**

Trend: 

2) 14 consecutive days where positive test rate is below 10% on average

Daily Positive Rate: 5.43%

14-day Average: 4.60%

Cumulative Positive Rate: 18.44%

Total Positives: 169,746

Total People Tested: 920,420

JHS Positive Rate: 6%

3) 30% Total and ICU Bed Capacity Available*

As of : **10/1/2020**

COVID non-ICU Admissions: 243

Available non-ICU beds: 5,369

COVID ICU Admissions: 110

Available ICU beds: 973

4) Miami-Dade Fire Rescue COVID Calls

Calls for: **9/30/2020**

Suspected COVID-19 Calls: 45

5-day Average: 46

5) Plan in place to monitor and manage hospital capacity and vulnerable

In Progress

6) Lab Turnaround Time Reported by FDOH

Cases Reported on: **9/30/2020**

less than 3 days: 85.22%

4-7 days: 9.12%

7 or more days: 5.66%

7) Countywide contact tracing program with a target headcount of 100 tracers by May 31

Complete. As of 7/30, there are 350 contact tracers in place

8) Sector safety guidelines developed and communicated

In Progress

9) Plan in place to open public transit that protects workers and commuters

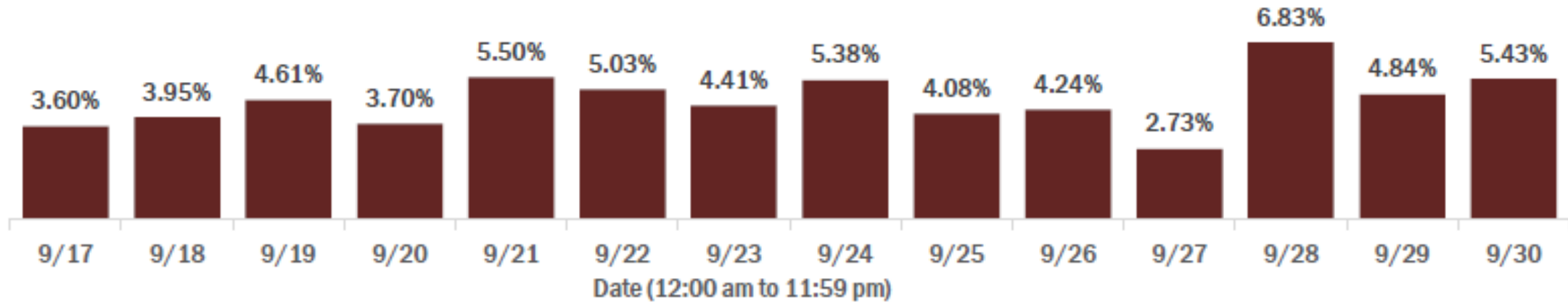
In Progress

** Percentage represents the number of COVID positive patients utilizing hospital beds; does not include the 1,241 acute care and ICU beds that may be converted*

COVID-19 Daily Positive Rate

Percent positivity for new cases in Florida residents

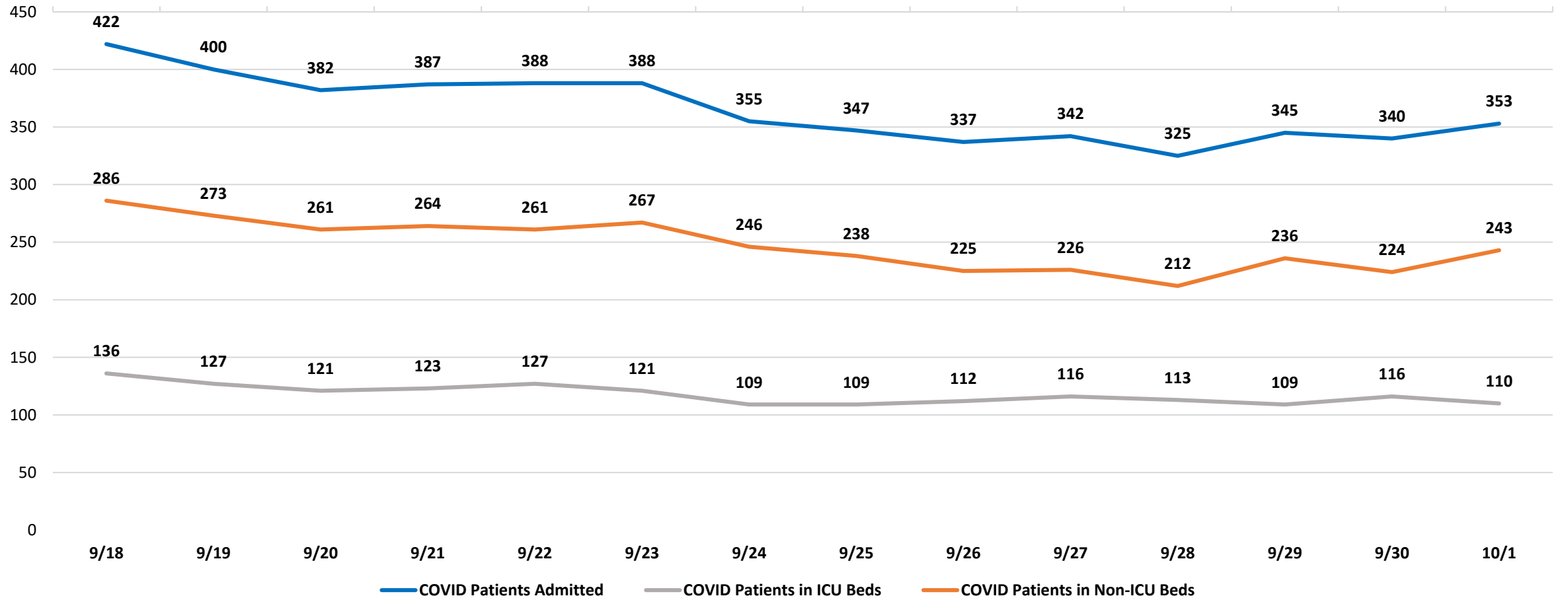
These counts include the number of Florida residents for whom the department received PCR or antigen laboratory results by day. This percent is the number of people who test positive for the first time divided by all the people tested that day, excluding people who have previously tested positive.



14-day average: 4.60%

COVID-19 Admitted Patients

COVID Patients Admitted



Data Source: Self-reported by hospitals as required by Emergency Order 18-20

DAILY COVID-19 HOSPITAL STATISTICAL REPORT

as of: 10/1/2020 11:17

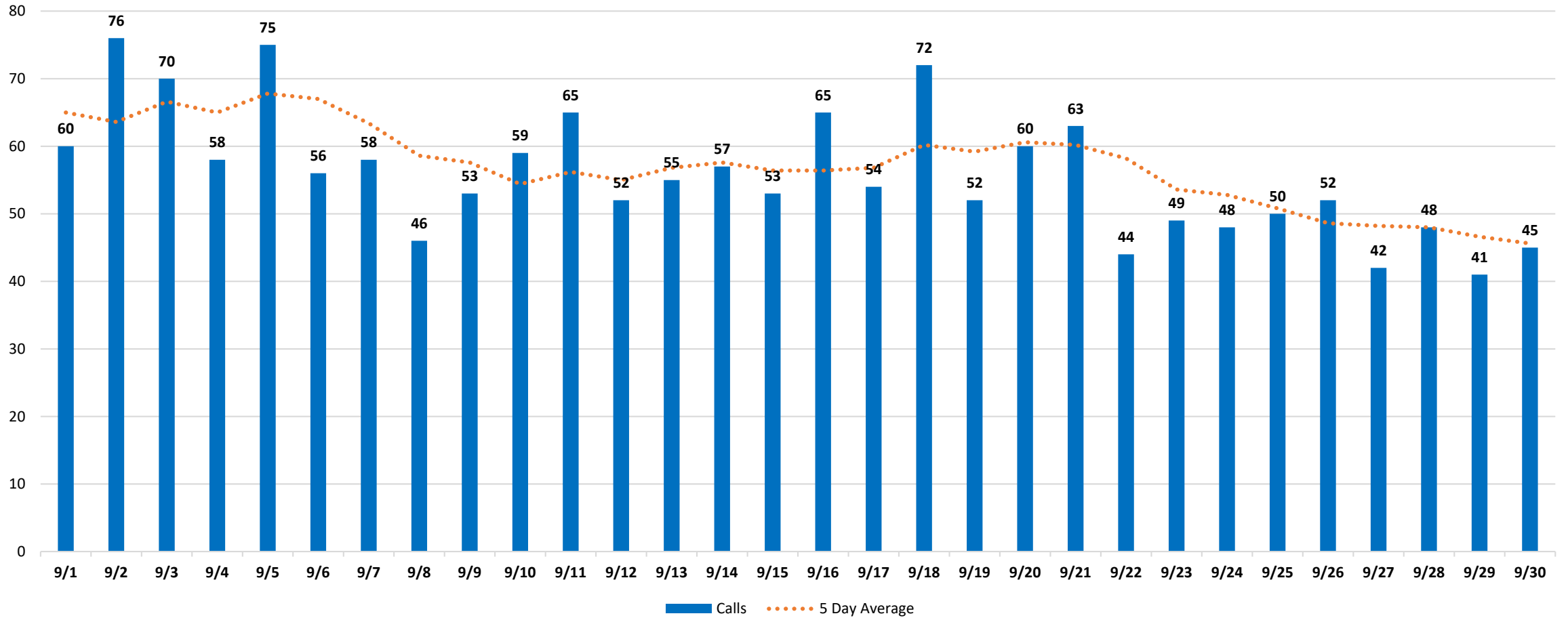
	9/18/2020	9/19/2020	9/20/2020	9/21/2020	9/22/2020	9/23/2020	9/24/2020	9/25/2020	9/26/2020	9/27/2020	9/28/2020	9/29/2020	9/30/2020	10/1/2020
Available Beds														
Acute Care Beds	5,362	5,363	5,364	5,372	5,381	5,373	5,375	5,372	5,372	5,372	5,373	5,366	5,371	5,369
Beds that may be converted to Acute Care Beds	739	734	734	741	743	744	747	747	742	742	744	740	744	764
ICU Beds	984	984	984	977	977	976	975	975	975	975	978	976	975	973
Beds that may be converted to ICU Beds	476	476	477	478	476	475	481	477	477	477	480	480	477	477
Ventilators														
Ventilators available for deployment	928	956	955	942	940	966	964	959	983	988	972	924	929	932
Ventilators on standby	140	134	139	132	133	138	144	139	150	152	145	142	144	143
Respirators/Anesthesia Machines that maybe converted to Ventilators	441	441	439	440	441	439	441	441	441	439	439	440	439	440
COVID-19 Cases														
COVID Patients Admitted	422	400	382	387	388	388	355	347	337	342	321	341	338	353
COVID Patients in ICU Beds	136	127	121	123	127	121	109	109	112	116	113	110	115	110
COVID Patients in Non-ICU Beds	286	273	261	264	261	267	246	238	225	226	214	236	223	243
COVID Patients on ventilators	106	98	97	97	89	90	80	74	67	67	69	66	65	65
COVID-19 Patients														
New COVID Patients	49	45	39	28	44	31	41	34	41	33	29	46	40	54
COVID Patients Discharged	78	63	52	29	58	58	65	56	57	36	34	45	56	52

*This data has been collected and compiled based on Emergency Order 18-20, as of the time noted. The information is submitted by the respective facilities and has not been audited.

** As certain data points are clarified, information reported for prior periods may change

Miami-Dade Fire Rescue Calls

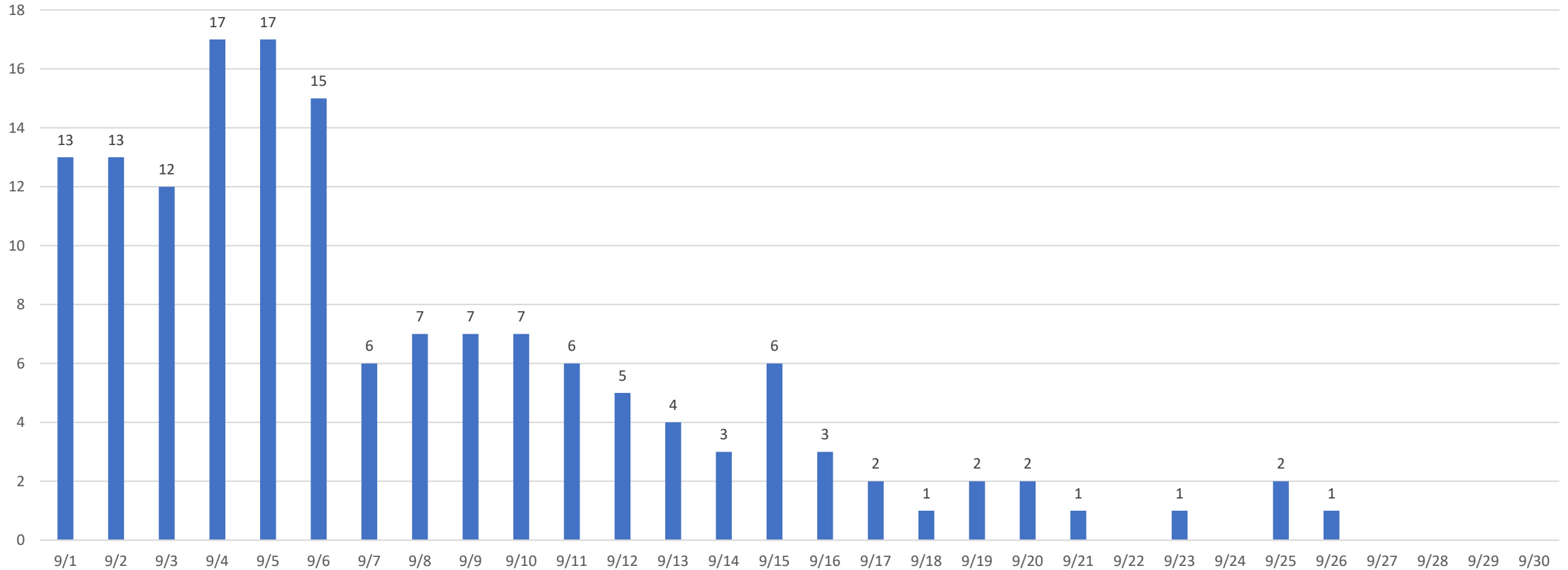
MDFR Suspected COVID-19 Calls



Deaths by Day

Florida Department of Health through September 30

FDOH Deaths by Day



An August 15th decision by the Florida Medical Examiner Commission determined that "treating physicians may certify COVID-19 deaths" so long as certain conditions are met. While this decision will expedite such process, it will result in the County's ME reporting and certifying a lower number of deaths. The information shown above is based on figures provided by the Florida Department of Health.

Data Source: Florida Department of Health