

Moving to a New Normal Dashboard

January 18, 2021



Miami-Dade County Daily Summary

Moving to a New Normal Dashboard Summary

1) Trajectory of documented cases within a 14-day period

As of: 1/18/2021

New Reported Positives: 1,839

Trend: 

2) 14 consecutive days where positive test rate is below 10% on average

Daily Positive Rate: 9.05%

14-day Average: 9.53%

JHS Positive Rate: 14%

3) 30% Total and ICU Bed Capacity Available*

As of: 1/18/2021

COVID non-ICU Admissions: 939

Available non-ICU beds: 5,389

COVID ICU Admissions: 241

Available ICU beds: 977

4) Miami-Dade Fire Rescue COVID Calls

Calls for: 1/17/2021

Suspected COVID-19 Calls: 84

5-day Average: 94

5) Lab Turnaround Time Reported by FDOH

Cases Reported on: 1/17/2021

less than 3 days: 96.91%

4 to 7 days: 3.09%

7 or more days: 0.00%

6) COVID-19 Vaccination Program

Number of County-wide Vaccinations Since Inception: 119,528

7) Countywide Tracing Program

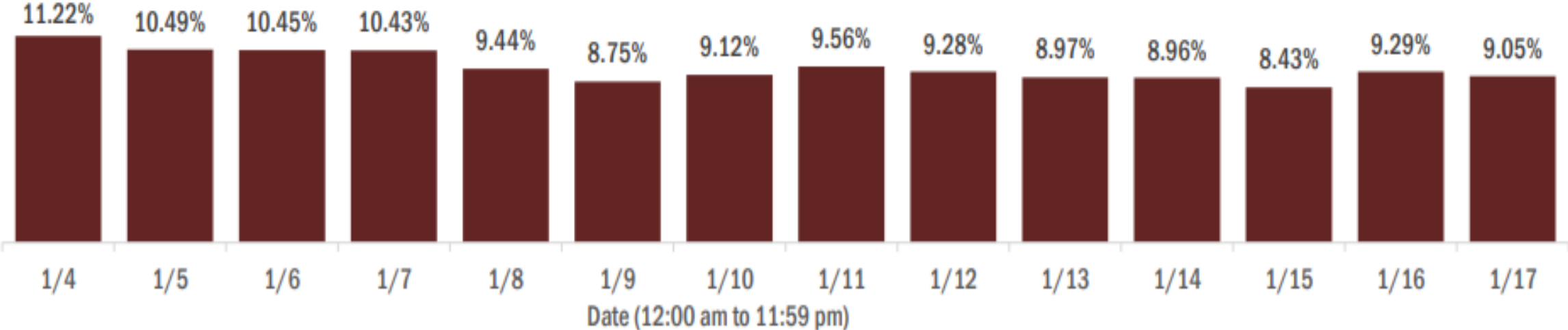
As of 12/09: 566 Contact Tracers in place

* Percentage represents the number of COVID positive patients utilizing hospital beds; does not include the 1,203 acute care and ICU beds that may be converted.

COVID-19 Daily Positive Rate

Percent positivity for new cases in Florida residents

These counts include the number of Florida residents for whom the department received PCR or antigen laboratory results by day. This percent is the number of people who test positive for the first time divided by all the people tested that day, excluding people who have previously tested positive.

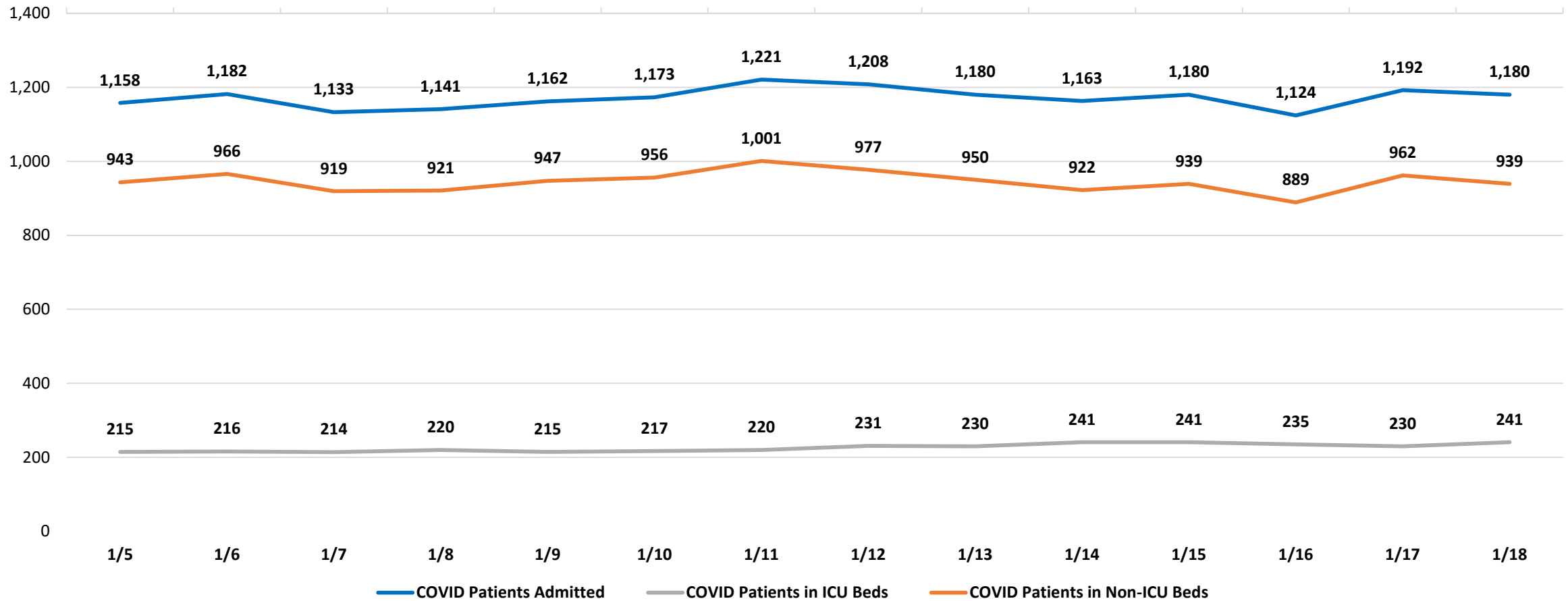


14-day average: 9.53%
New Reported Cases: 1,839

Data Source: The daily positivity rate as reported by the State of Florida on the "County Report" http://ww11.doh.state.fl.us/comm/partners/covid19_report_archive/county_reports_latest.pdf

Cumulative COVID-19 Admitted Patients

COVID Patients Admitted



Data Source: Self-reported by hospitals as required by Emergency Order 18-20

DAILY COVID-19 HOSPITAL STATISTICAL REPORT
Last 14 Days

as of: 1/18/2021 13:28

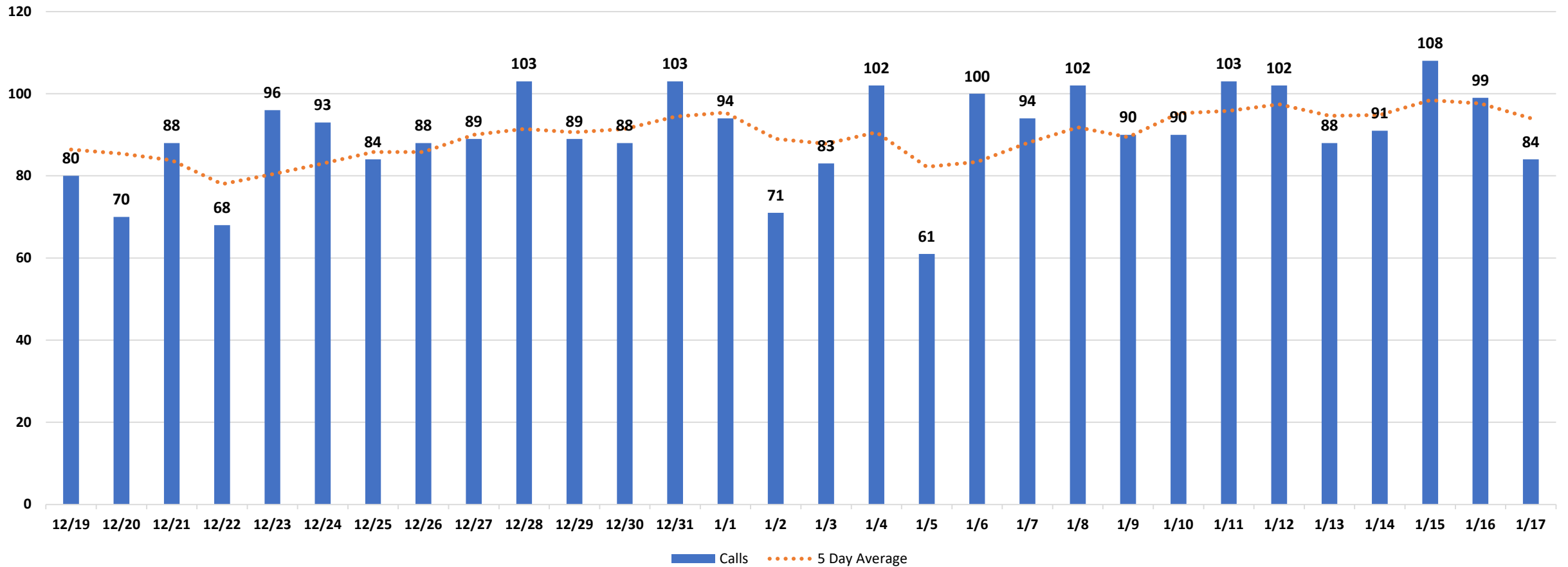
	1/5/2021	1/6/2021	1/7/2021	1/8/2021	1/9/2021	1/10/2021	1/11/2021	1/12/2021	1/13/2021	1/14/2021	1/15/2021	1/16/2021	1/17/2021	1/18/2021
Available Beds														
Acute Care Beds	5,346	5,375	5,396	5,407	5,386	5,385	5,374	5,389	5,410	5,412	5,387	5,395	5,387	5,389
Beds that may be converted to Acute Care Beds	736	761	760	760	735	735	760	760	763	759	755	755	730	726
ICU Beds	979	978	977	977	977	977	978	979	979	978	978	976	976	977
Beds that may be converted to ICU Beds	478	476	479	476	478	478	479	478	480	475	475	476	475	477
Ventilators														
Ventilators available for deployment	787	808	812	832	817	816	811	787	780	780	777	768	770	774
Ventilators on standby	110	108	114	112	115	114	103	86	86	84	88	83	85	86
Respirators/Anesthesia Machines that may be converted to Ventilators	439	440	440	440	439	439	438	439	439	440	440	438	440	440
COVID-19 Cases														
COVID Patients Admitted	1,158	1,182	1,133	1,141	1,162	1,173	1,221	1,208	1,180	1,163	1,180	1,124	1,192	1,180
COVID Patients in ICU Beds	215	216	214	220	215	217	220	231	230	241	241	235	230	241
COVID Patients in Non-ICU Beds	943	966	919	921	947	956	1,001	977	950	922	939	889	962	939
COVID Patients on ventilators	144	144	137	137	134	138	147	150	159	165	165	162	158	156
COVID-19 Patients														
New COVID Patients	127	108	100	119	120	110	119	93	146	104	135	115	144	84
COVID Patients Discharged	165	171	181	162	185	126	100	150	209	164	160	192	99	119

*This data has been collected and compiled based on Emergency Order 18-20, as of the time noted. The information is submitted by the respective facilities and has not been audited.

** As certain data points are clarified, information reported for prior periods may change

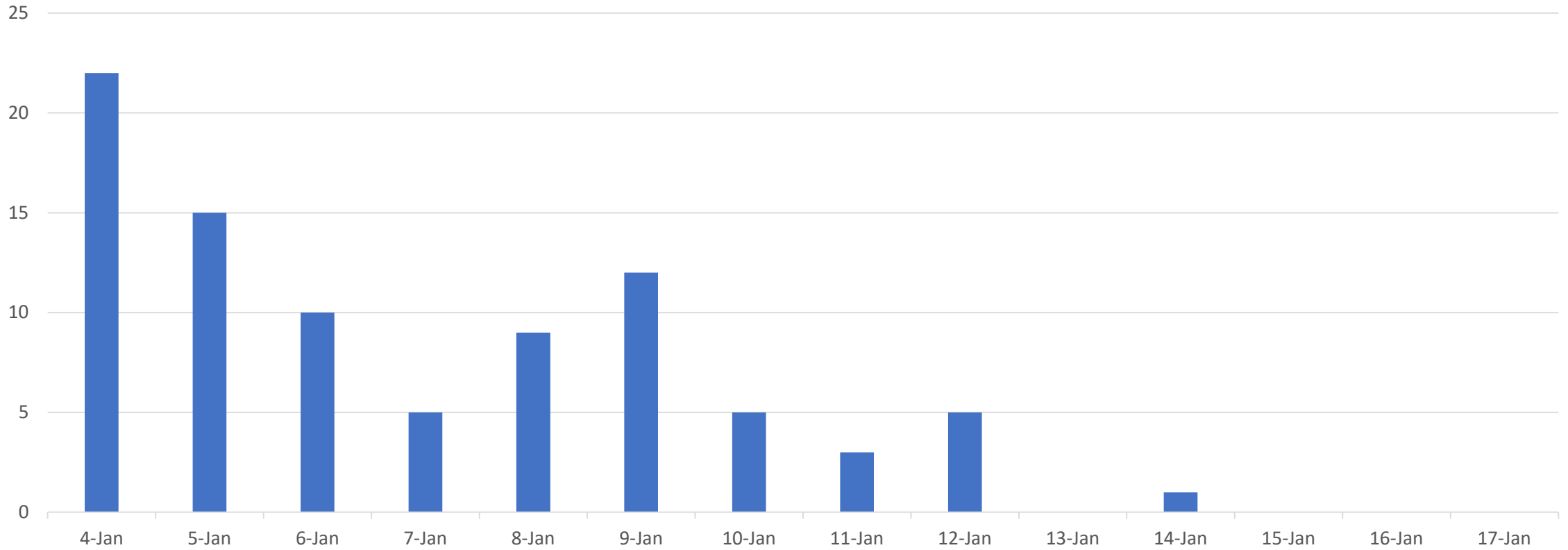
Miami-Dade Fire Rescue Calls

MDFR Suspected COVID-19 Calls
Last 30 Days



Cumulative FDOH Deaths By Date

Last 14 Days



**Miami Dade Total Number of
Deaths: 4,617**

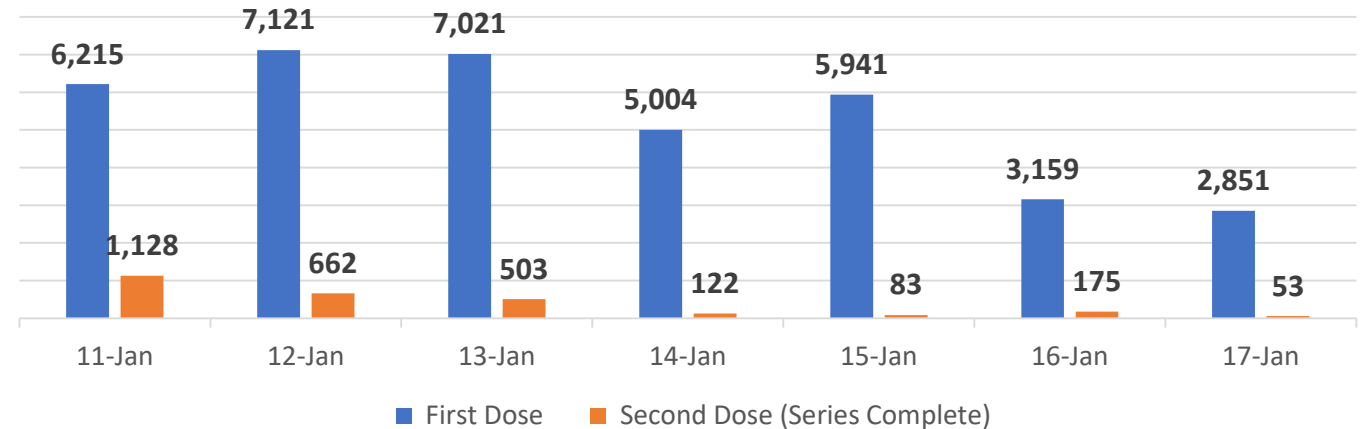
Miami-Dade County COVID-19 Vaccination Numbers

Last 7 Days

Number of People Who Received COVID-19 Vaccination *Last 7 Days*

Daily Number Of People Vaccinated

Date	First Dose	Second Dose (Series Complete)
1/11/2021	6,215	1,128
1/12/2021	7,121	662
1/13/2021	7,021	503
1/14/2021	5,004	122
1/15/2021	5,941	83
1/16/2021	3,159	175
1/17/2021	2,851	53



Total Number of County-wide Vaccinations Since Inception: 119,528

(First Dose: 104,421 and Second Dose: 15,107)

Data in this report are provisional and subject to change.

Data in this summary pertain to COVID-19 vaccines approved by the U.S. Food and Drug Administration and have been issued an Emergency Use Authorization. These data summarize the number of people who have received either their first dose or have completed the series for a COVID-19 vaccine. A person can only be counted in one category, first dose or series complete.