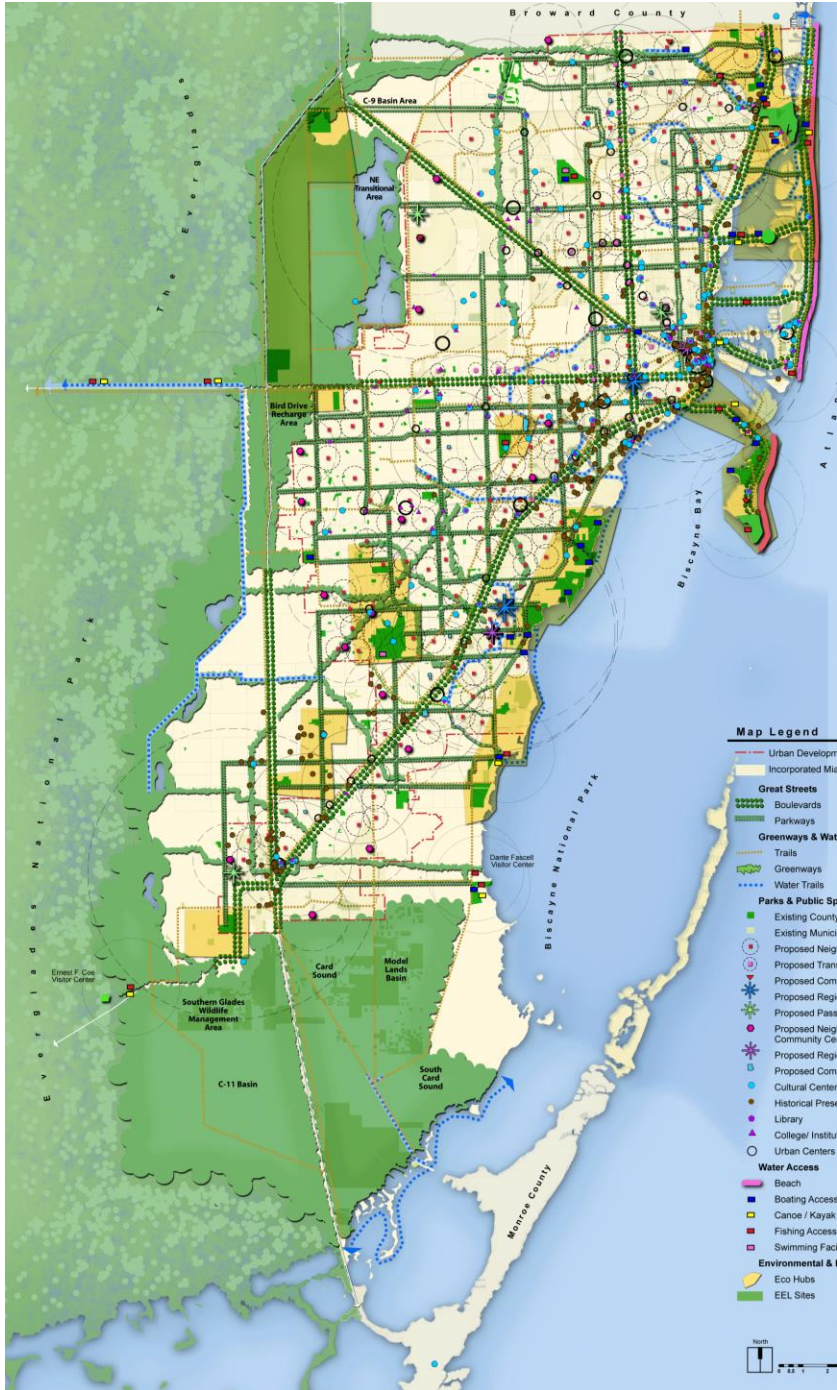


MD Parks, Recreation & Open Space

Connecting People and Places

April 29, 2015



The **Community's** Plan

A **Connected** System Of:

Parks

Public Spaces

Natural Cultural Areas

Greenways

Blueways

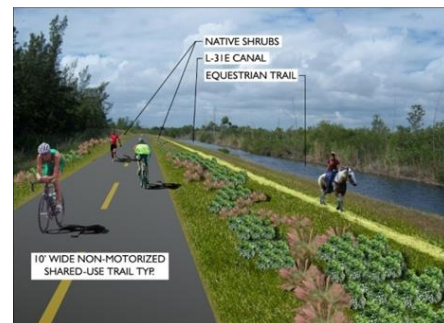
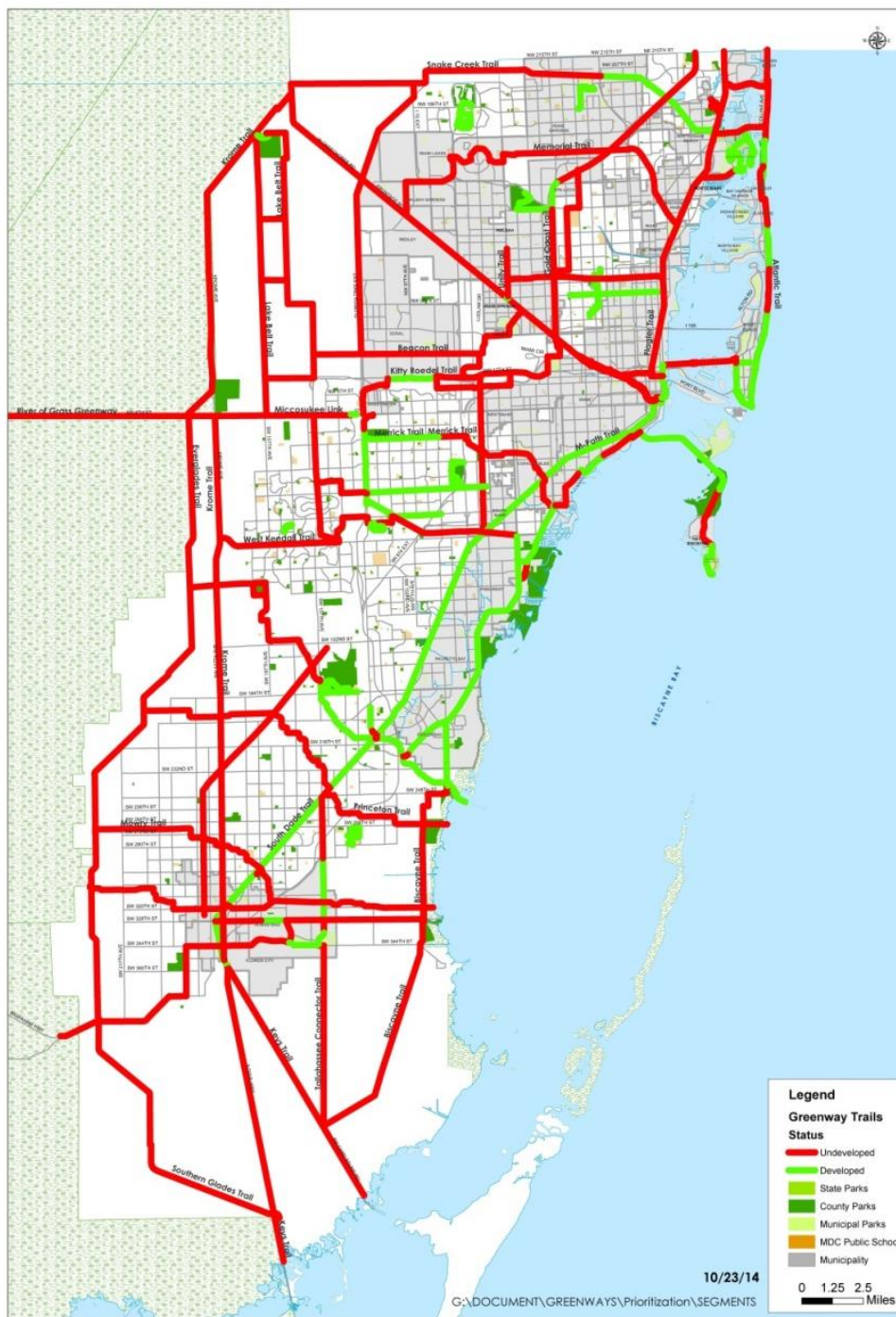
Streets

Miami Dade County Greenways/Trails

- 500+ mile network
- Approx. 143 miles of trails built to date
- 363+ miles of trails planned for future implementation



Developed (green) Undeveloped (red)



Wayfinding System

Black Creek Trail

Trail Etiquette

Comportamiento en los Senderos

- Watch for vehicles**
Cuidado con los vehículos
- Yield to pedestrians**
Ceda el paso a los peatones
- Keep right and pass on left**
Manténgase a la derecha y adelante por la izquierda
- Announce yourself**
Anúnciese
- If you stop, get off the trail**
Si se detiene, salga del sendero
- Be alert**
Esté alerta
- Obey all trail signs**
Obedezca todas las señales del sendero
- Keep the trail clean**
Mantenga el sendero limpio
- Keep animals under control**
Mantenga sus animales bajo control
- Protect yourself and others**
Protéjase usted y a los demás

Paw Foundation
HEALING
SMITH

Black Creek Trail

Route 7

Legend

- On-Street Bike Lane
- Paved Path
- Sidewalk
- Shared Road
- Adjacent Path
- Fork
- Point of Interest
- Restrooms & Water

Black Creek Trail Segment of Route 7
Length 8.7 Miles

For more information Dial 311
miamidade.gov

Paw Foundation
HEALING
SMITH

TO

2

Snake Creek Trail

Paw Foundation
HEALING
SMITH

WEST

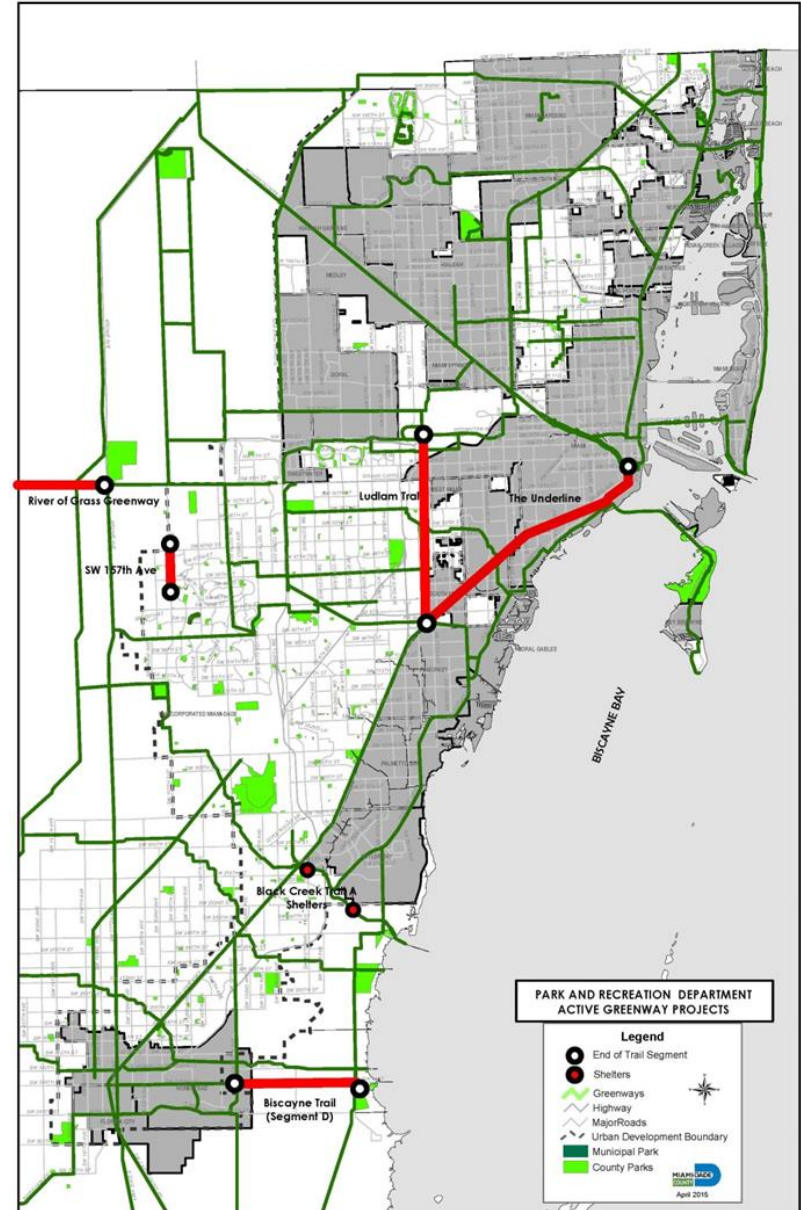
2

Snake Creek Trail

Paw Foundation
HEALING
SMITH

PROS Active Greenway Trails Projects

- The Underline (Planning)
- Ludlam Trail (Planning)
- River of Grass Greenway (Planning)
- SW 157 Av. Trail (Design)
- Black Creek Trail A Shelters (Const.)
- Biscayne Trail Segment D (Design)



The Underline

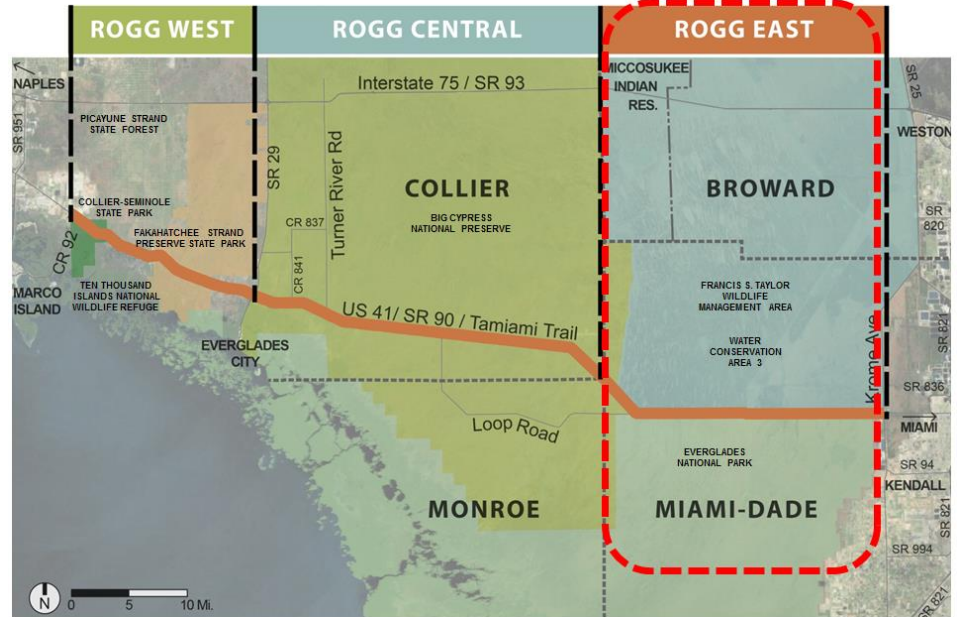


Ludlam Trail





River of Grass Greenway



The River of Grass Greenway (ROGG) is a non-motorized transportation and recreation corridor across the Everglades, connecting Naples and Miami, that promotes enhanced opportunities for education and stewardship of the environmental and cultural assets of this unique area

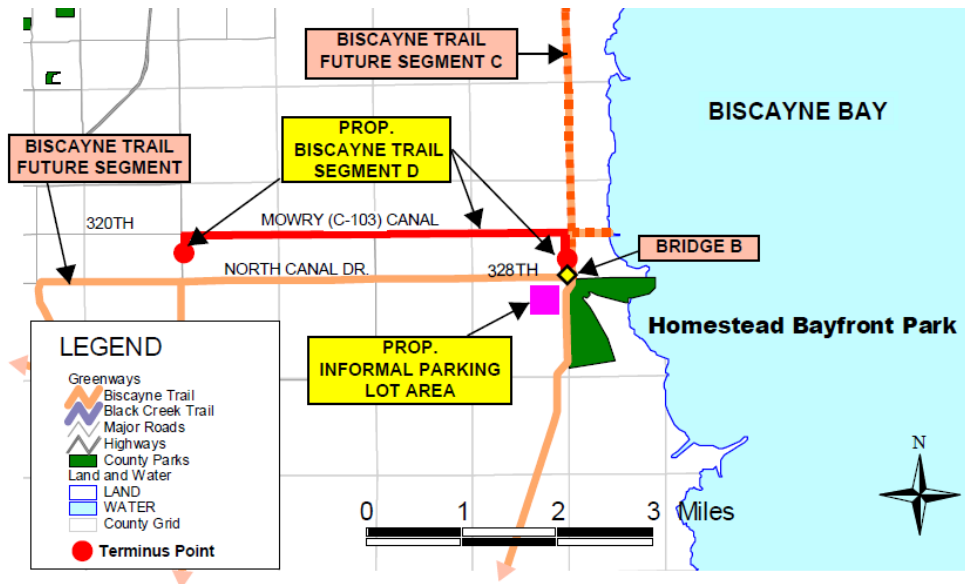
SW 157 Av. Trail



- Links to an existing path on SW 157th Av. that stretches from SW 59th Ter. to Sunset Dr.
- Adds 1 mile of bike path to the existing 3 miles from SW 59th Ter. to Bird Dr. (SW 42nd St.)
- Estimated completion: January 2016

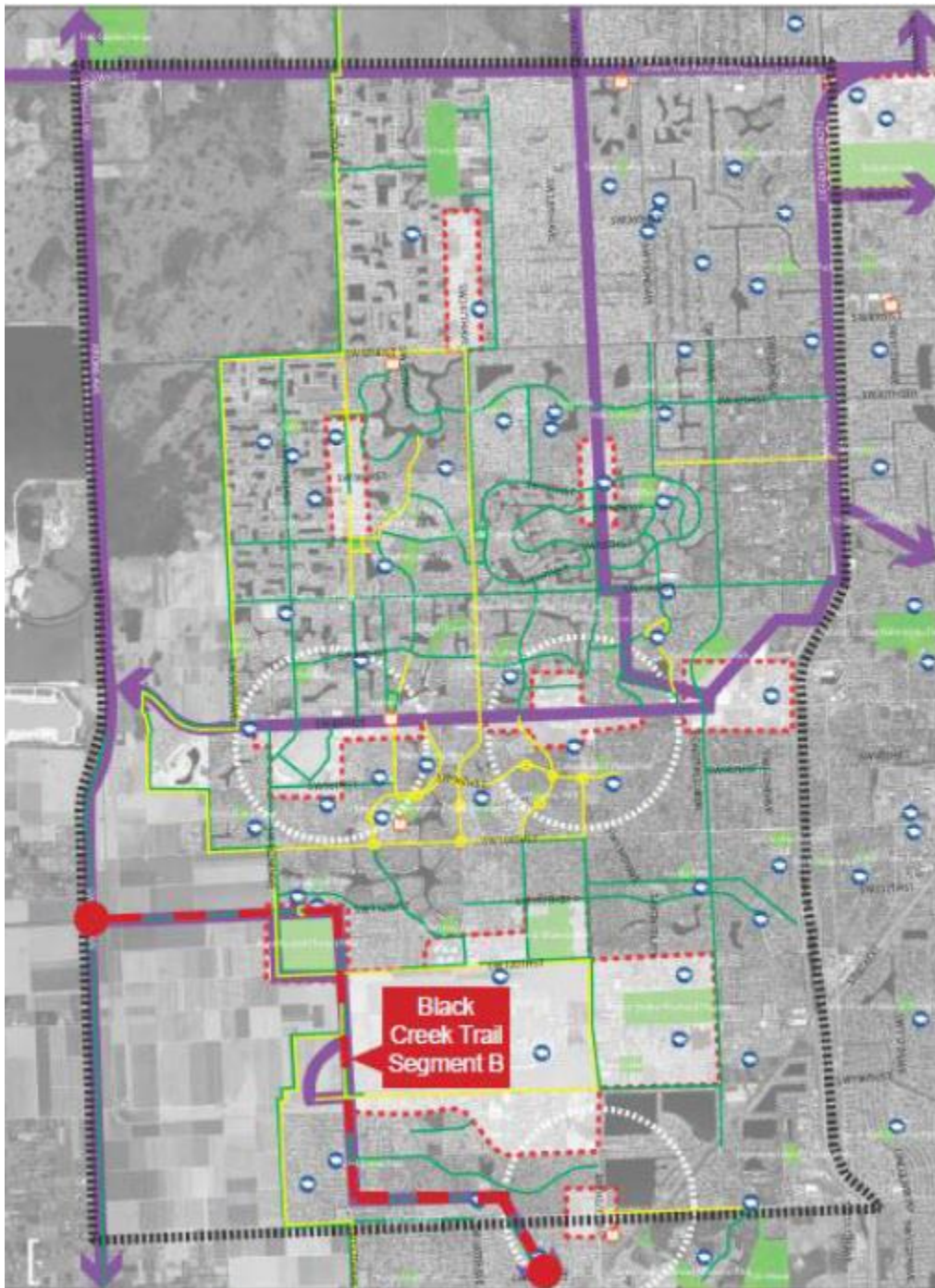
Biscayne Trail - Segment D Design

- 4.69 miles - Along the L-31E Canal, the Mowry (C-103) Canal and the east side of SW 137 Av.
- Construction: Approx. Sept. 2016 – Sept. 2017



West End Connectivity Plan

- Access to parks, libraries, schools and business
- Add approximately 15 miles of bike routes
- Seek funding in order to implement the vision of the West End



SOUTH FLORIDA PARK COALITION



BIKE 305

CONNECTING COMMUNITIES



**BRING A BIKE.
RIDE FREE.**



ADVANCING FLORIDA'S MOBILITY FUTURE

SIGN UP AT WHEELSFLORIDA.ORG



**BRING A BIKE.
RIDE FREE.**



SIGN UP AT WHEELSFLORIDA.ORG