



Coral Gables

Miracle Mile & Giralda Avenue

Streetscape: A Community Collaboration

October 28, 2015

Purpose

- Create a civic promenade and become a focal point for the region.
- Develop a garden feel through extensive landscaping, furniture, lighting and public art.
- Build space for sidewalk cafes and gathering places
- Fix existing infrastructure deficiencies e.g. sidewalks, landscaping and drainage.
- Integrate Biltmore Way and Merrick Park with Miracle Mile.

Realizing the Vision

- More than 20 years of community collaboration.
- City Commission approved the funding plan last August.
- The project methodology was approved in September:
 - Build world-class design team
 - Establish steering committee of stakeholders
 - Engage the public
 - Hire Construction Manager at Risk (Contractor) during the design phase
 - Complete conceptual and final design
 - Build it!
 - Celebrate

- **The Project**

- Decades of community visioning
- ***Vision to reality:*** Transformation of our downtown into a beautiful, pedestrian environment: sidewalk dining, lush landscaping, enhanced lighting and art.

Project Overview

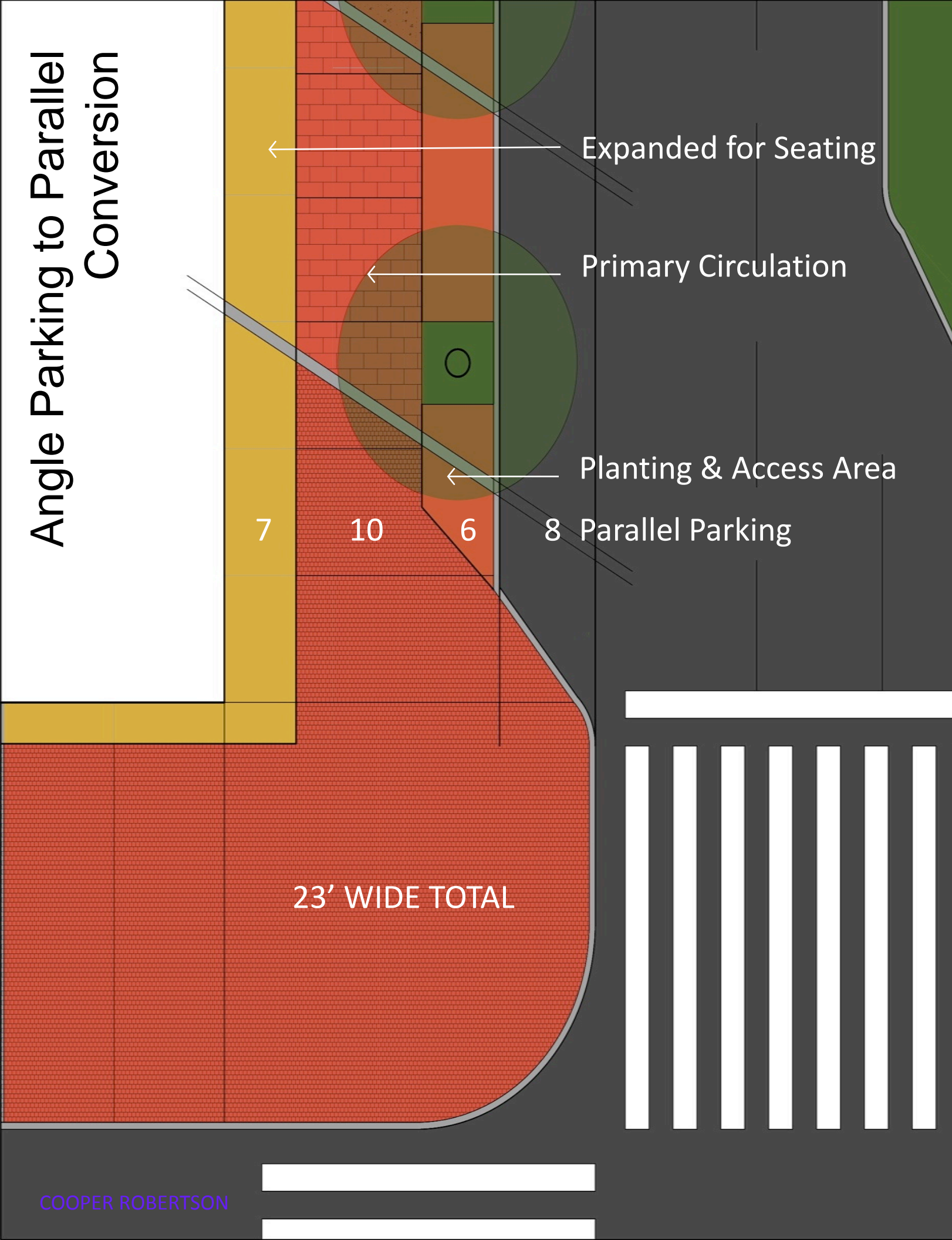


Project Overview

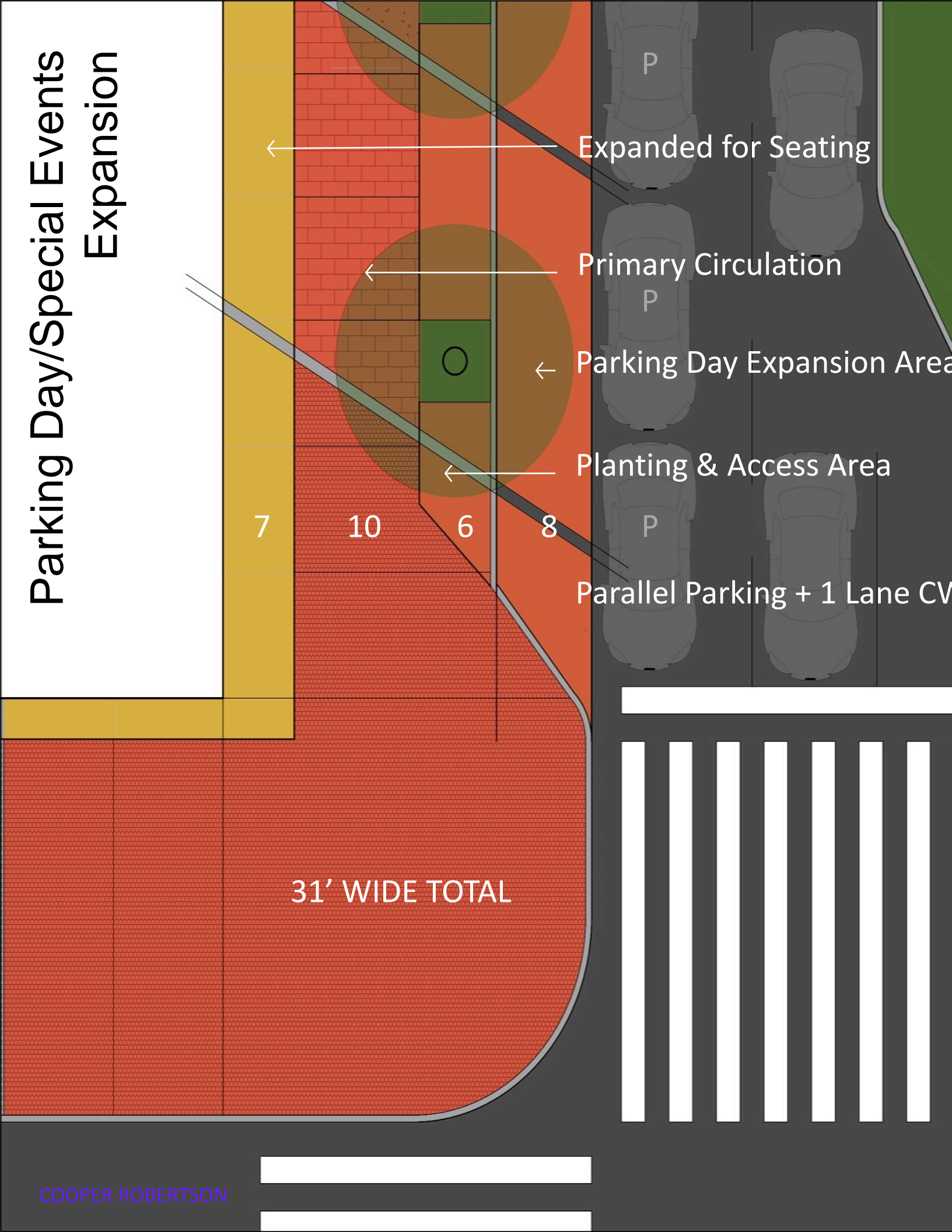
Steering Committee Members:

- **Stephen Bittel:** Chairman of Terranova Corp., a property owner and manager on the Mile
- **Dr. Charles Bohl:** Associate Professor and Director, Master in Real Estate Development and Urbanism Program at UM
- **Wayne Eldred:** Chair Elect Chamber of Commerce and Owner of Tarpon Bend Raw Bar & Grill
- **Marina Foglia:** Executive Director of the Business Improvement District
- **Glenn Kephart:** P.E., Public Works Director for Coral Gables
- **Jorge Kuperman:** Architect and Member of the Historic & Environmental Preservation Board of Miami, and property owner on Giralda
- **Carmen Olazabal:** P.E., Assistant City Manager for Coral Gables
- **Victor Richards:** Owner of 76-78 Miracle Mile
- **Carlos Rossi:** Owner Angelique Euro Café
- **Michael Sotelo:** Resident and with Facebook, Inc. and Coral Gables Board of Adjustment

Angle Parking to Parallel Conversion



Parking Day/Special Events Expansion



Miracle Mile: Rendering



Miracle Mile : Celebrate the Southern Florida Skies

Design Ambitions:

- Strengthen the identity of Miracle Mile as Coral Gables' Premiere Public Place.
- Create a social and retail environment that is more competitive in the region.
- Design a streetscape whose character is among the world's best.
- Use authentic materials that are resilient.
- Create an experience that rivals a walk in the clouds.

Miracle Mile : **Degrees of Blue Skies Studies**

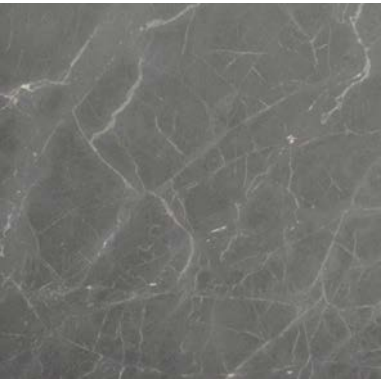
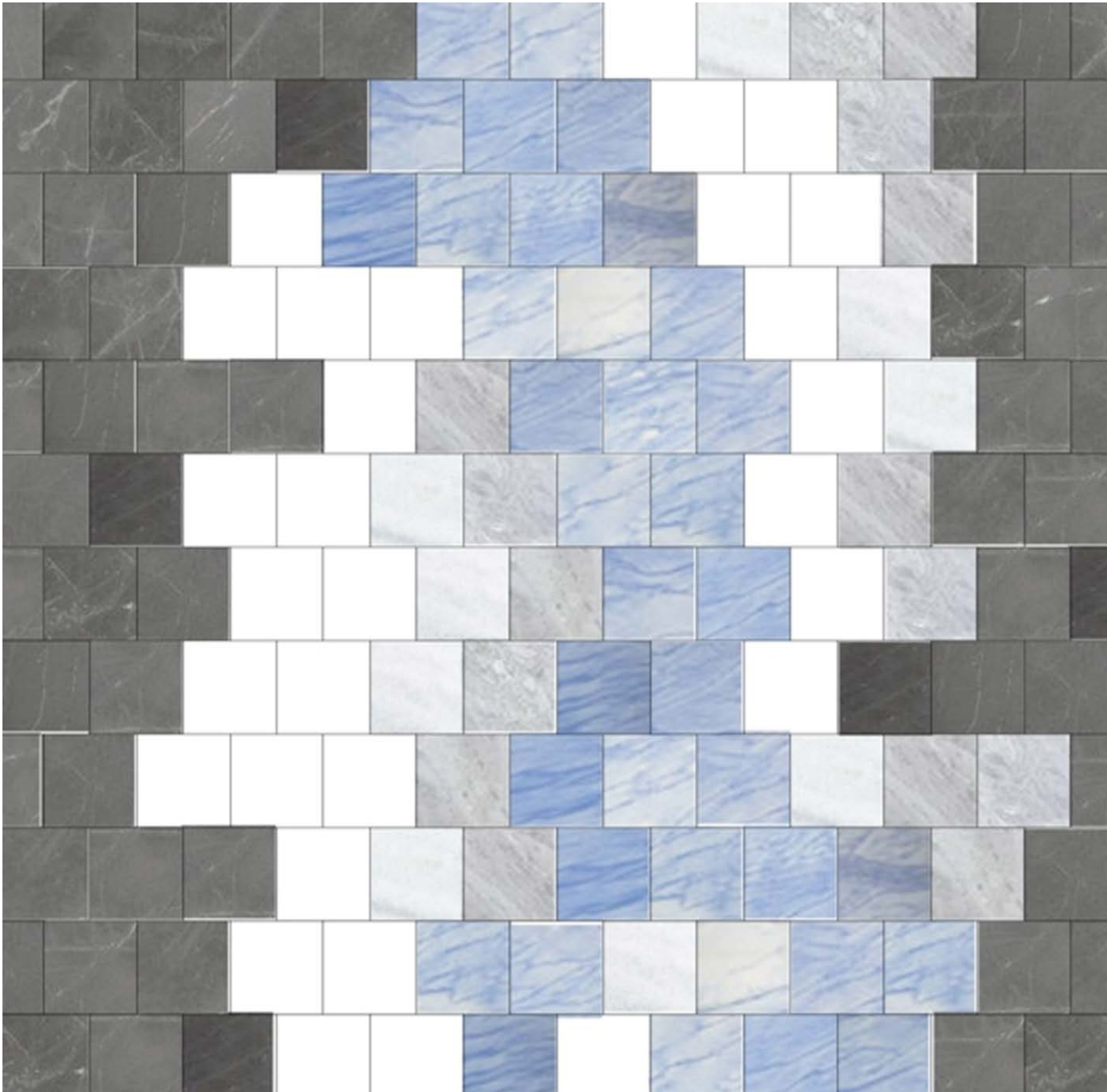


1. Pure Concept

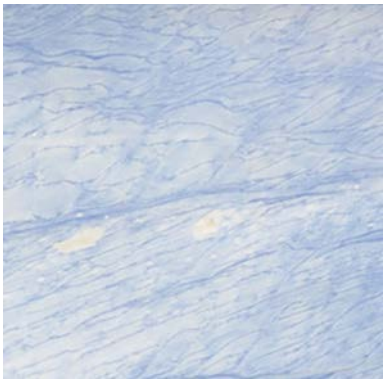


2. Sky Slot Flexible Concept

Paving Material: Sky Palette



Black Diamond



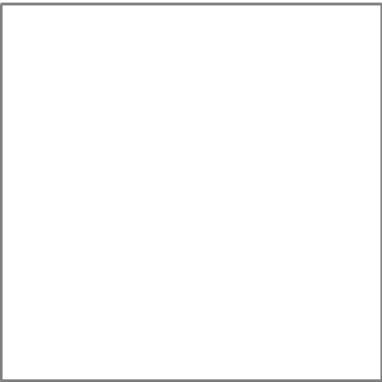
Macaubas



Gray Tundra

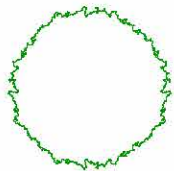
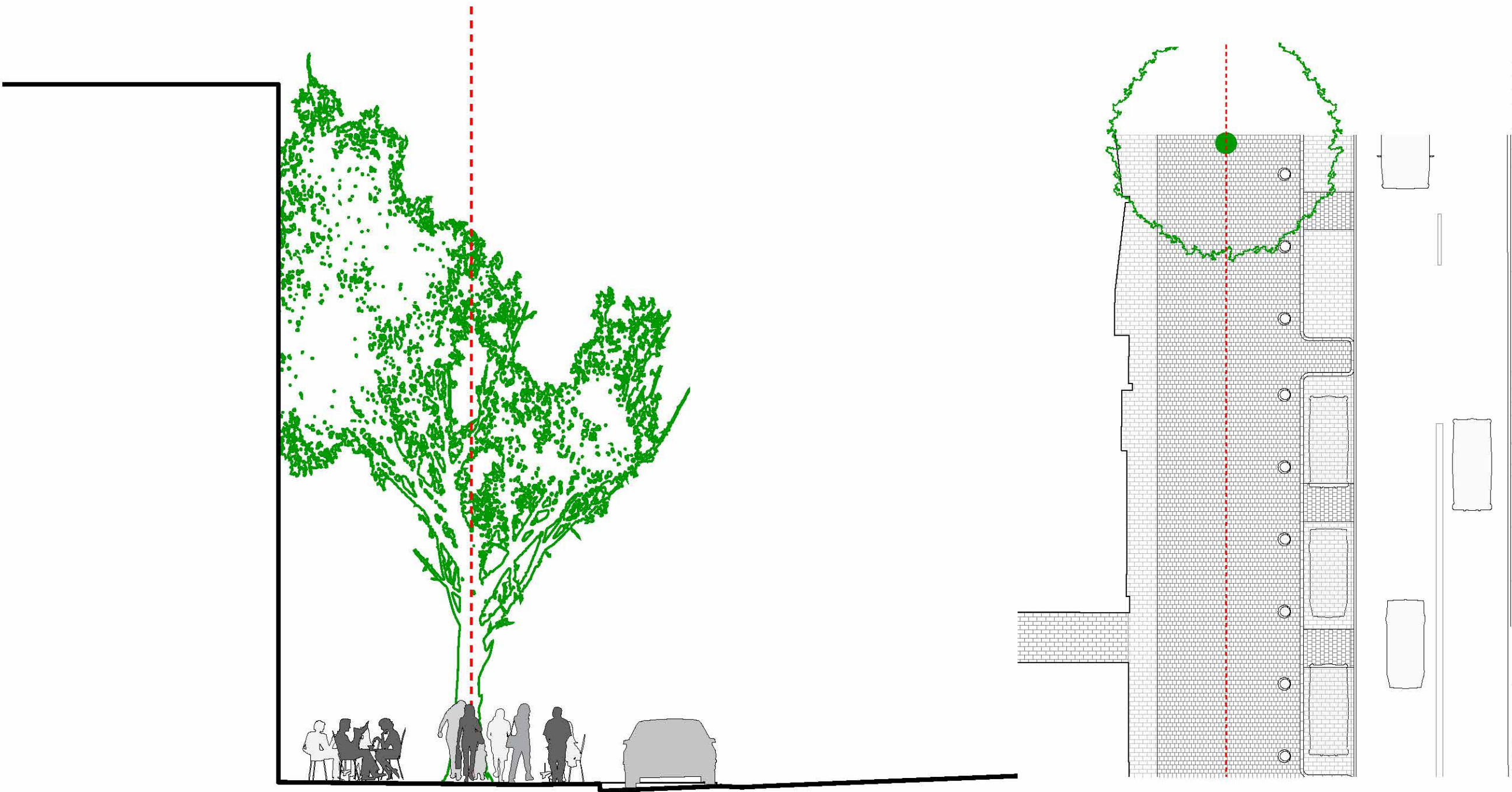


Mount Blank



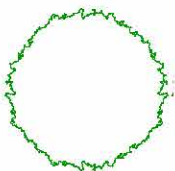
Navajo White

Tree Plan: Existing to Remain

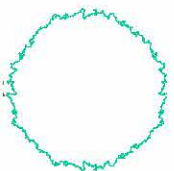


• Existing to Remain

Tree Plan: Curbside Strip

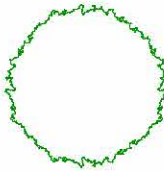
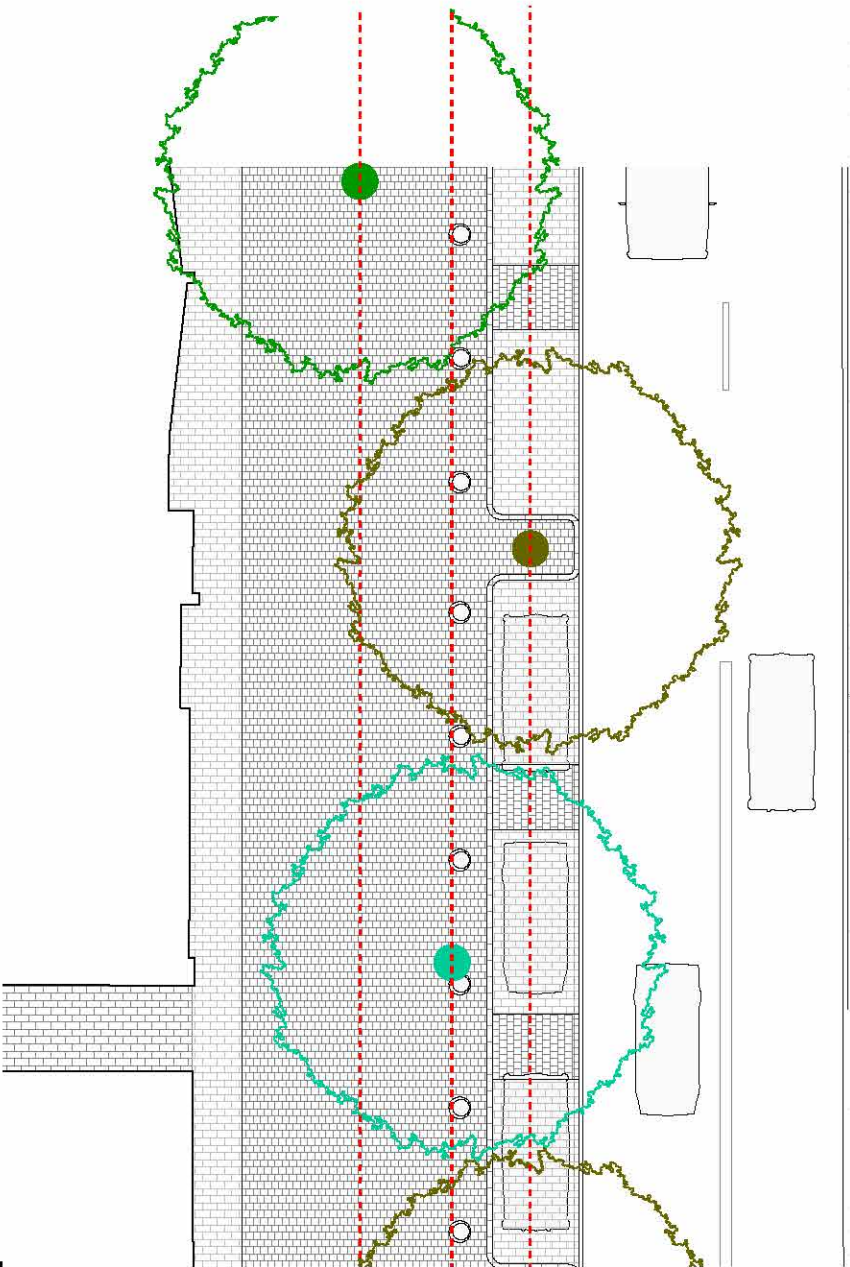
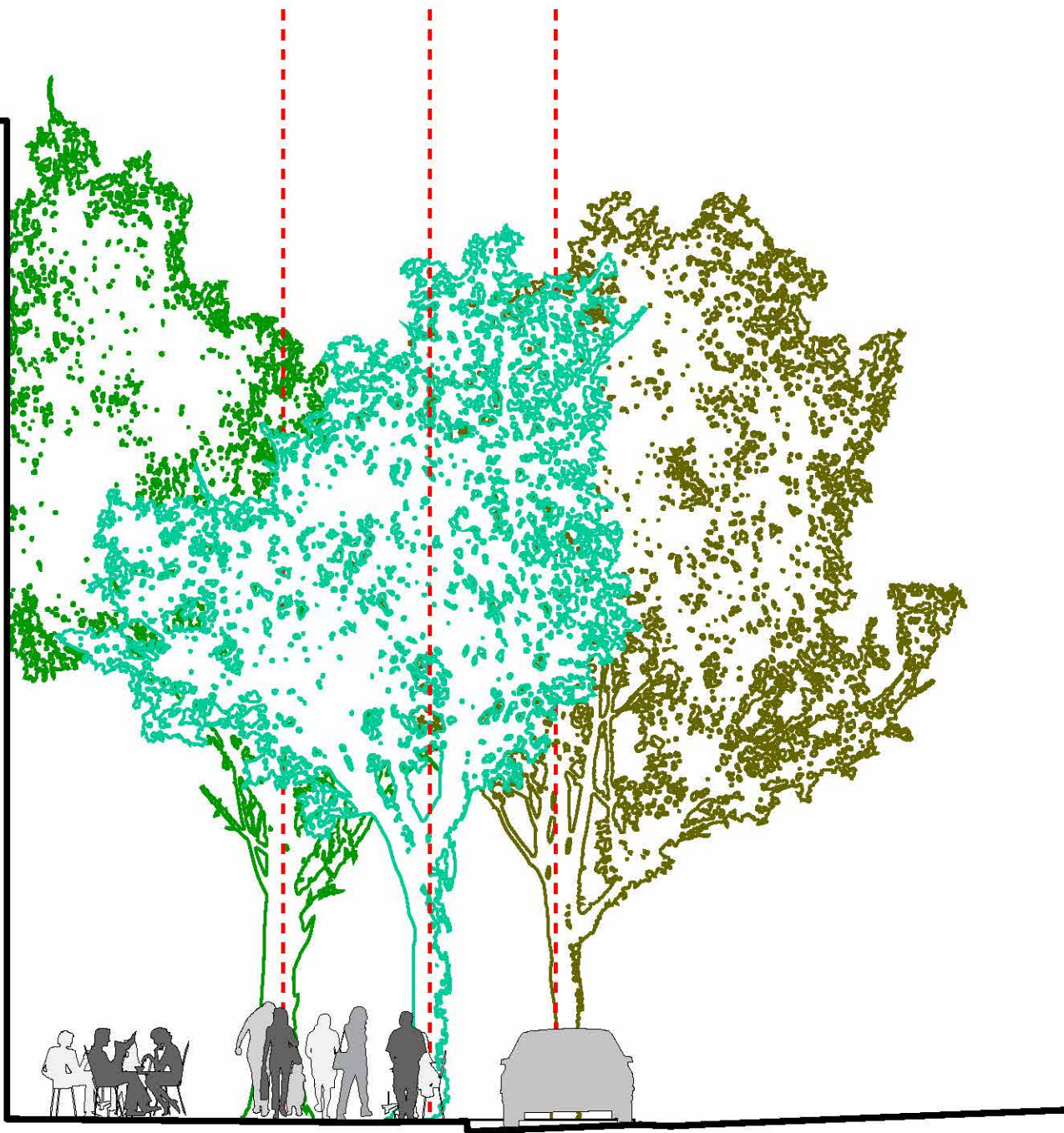


• Existing to Remain

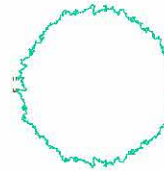


• Curbside Line

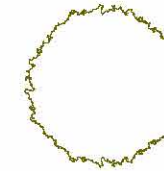
Tree Plan: **Parking Limit Planting**



• Existing to Remain

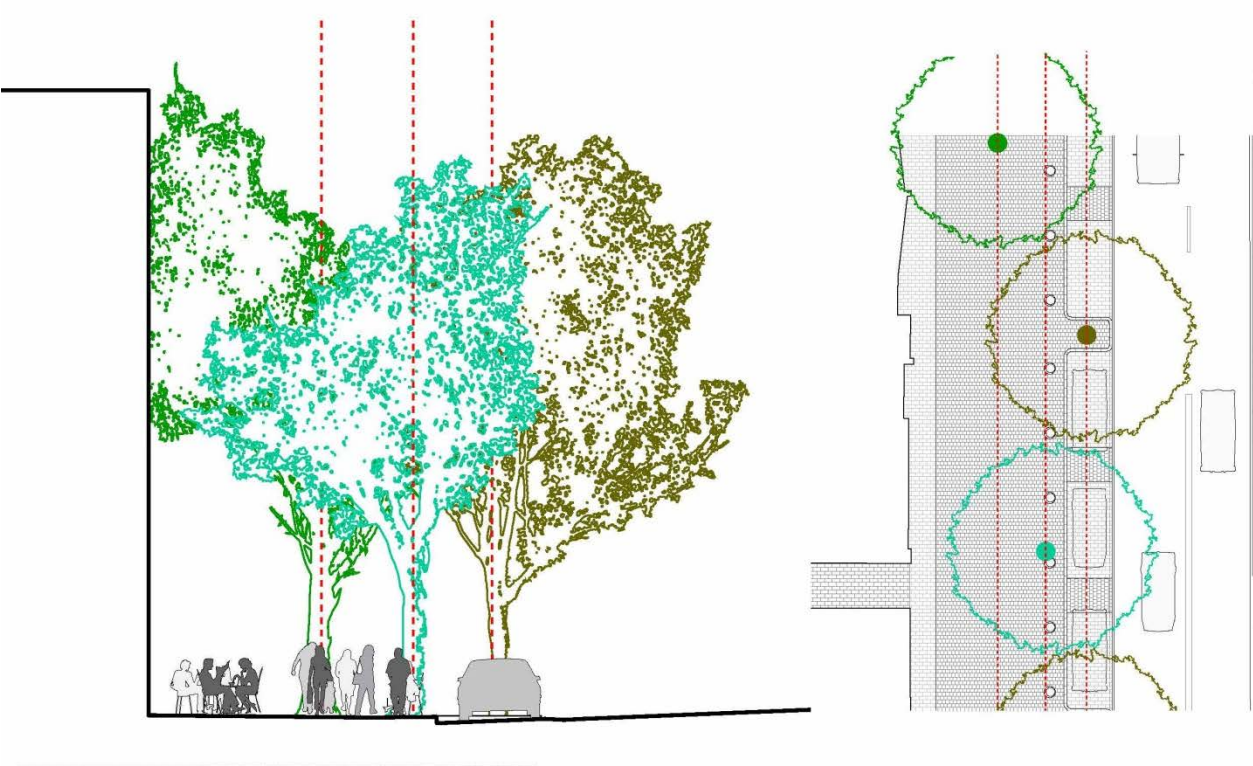


• Curbside Strip

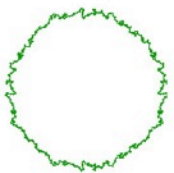


• Parking Line

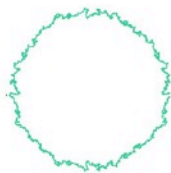
Tree Plan: **Proposed Plan**



• Existing to Remain

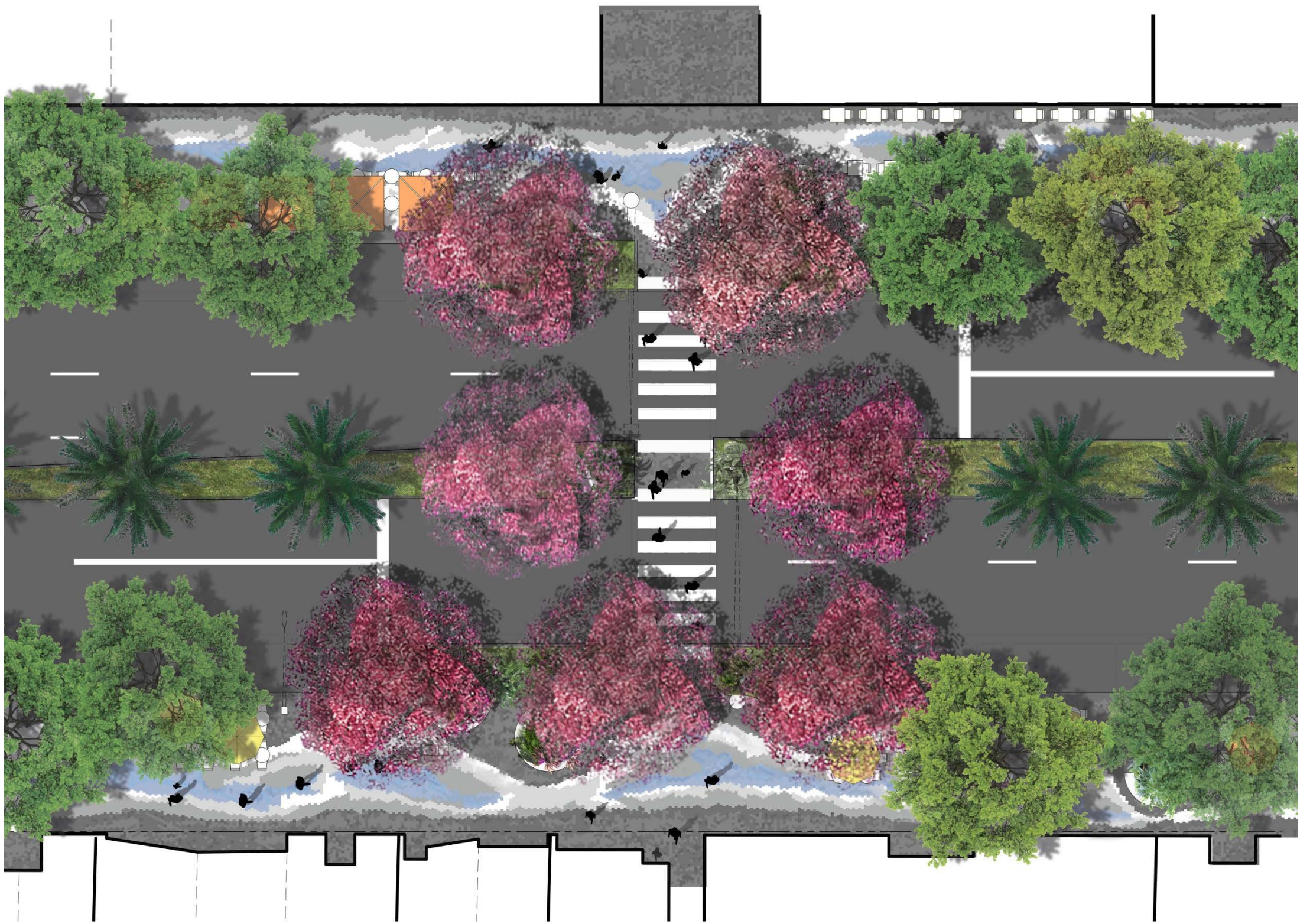


• Curbside Strip

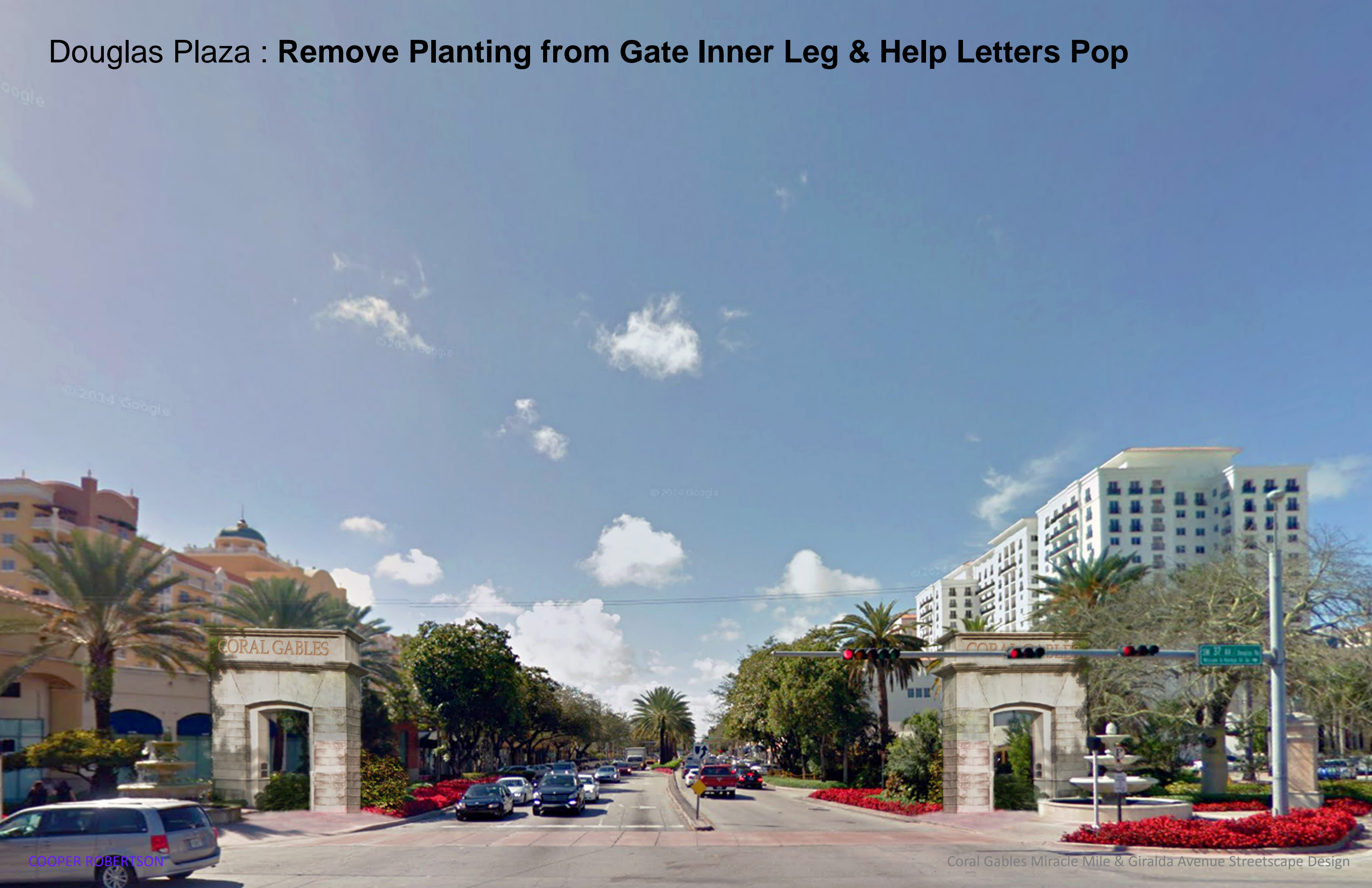


• Parking Line

Crosswalk : **Landscape** (*Canopy*)



Douglas Plaza : Remove Planting from Gate Inner Leg & Help Letters Pop



Douglas Plaza : Introduce Three Rows of Trees Beyond



Douglas Plaza : Support the Gates with Palm Groves



Douglas Plaza : Add Seasonal Flowering Trees

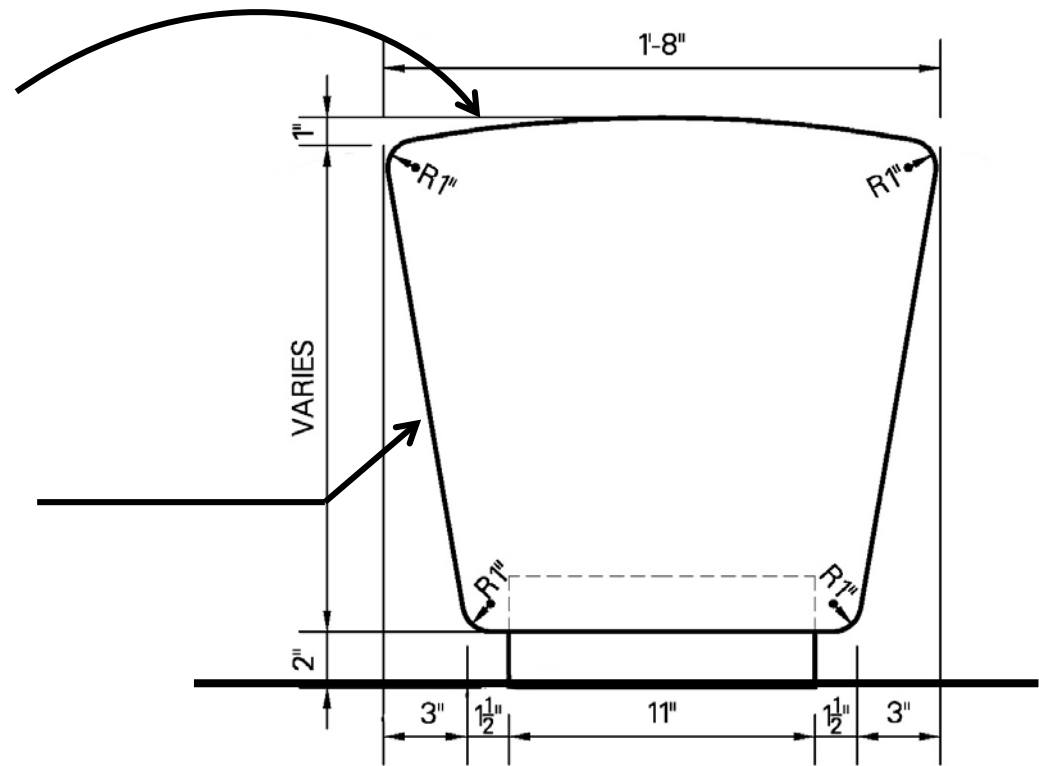


Fixed Furniture : Unit Geometries (Custom)



The top finish will be filled and honed to create a softer, smoother, and more resilient surface.

The sides will remain unfilled to allow the depth and porosity of the coral stone to be understood.

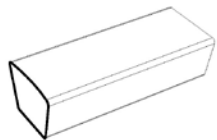
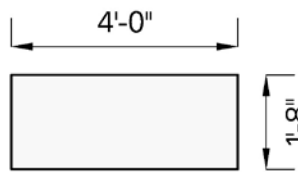


Application: Custom, sculpture seating, designed as various heights creating different experiences

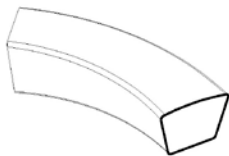
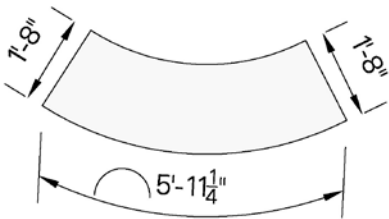
Integrated System: Lighting, Storm water collection

Numbers:

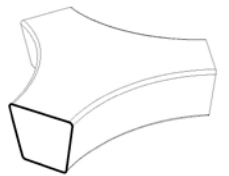
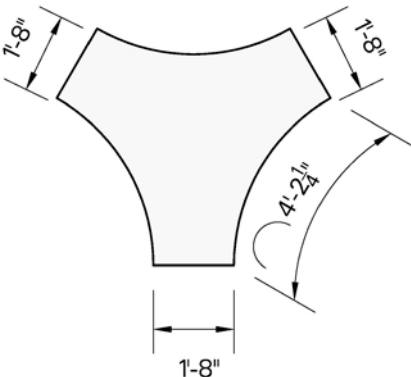
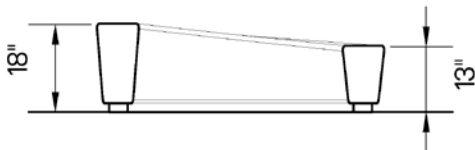
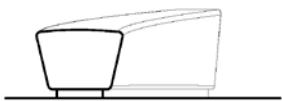
- Typical “C” Bench: 302
- Typical “Y” Bench: 23
- Typical “Bar” Bench: 27



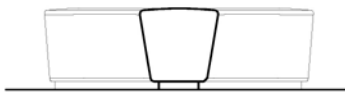
“Bar”



“C”



“Y”



Lightweight Furniture : Bryant Park, New York City



Bryant Park : Photo by Peter Mauss / Esto

COOPER ROBERTSON

Coral Gables Miracle Mile & Giralda Avenue Streetscape Design

Lightweight Furniture : **Color Range**

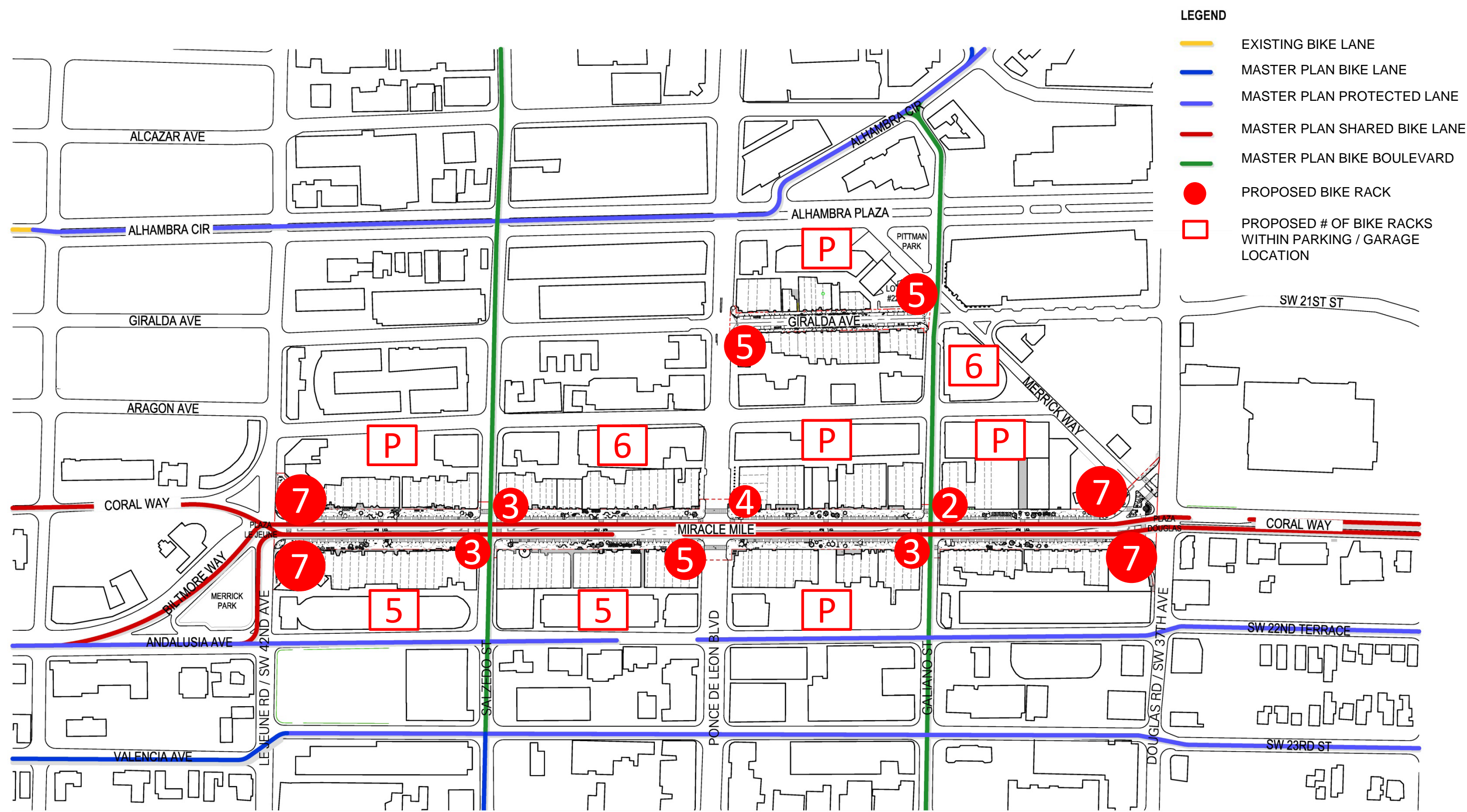


COOPER ROBERTSON



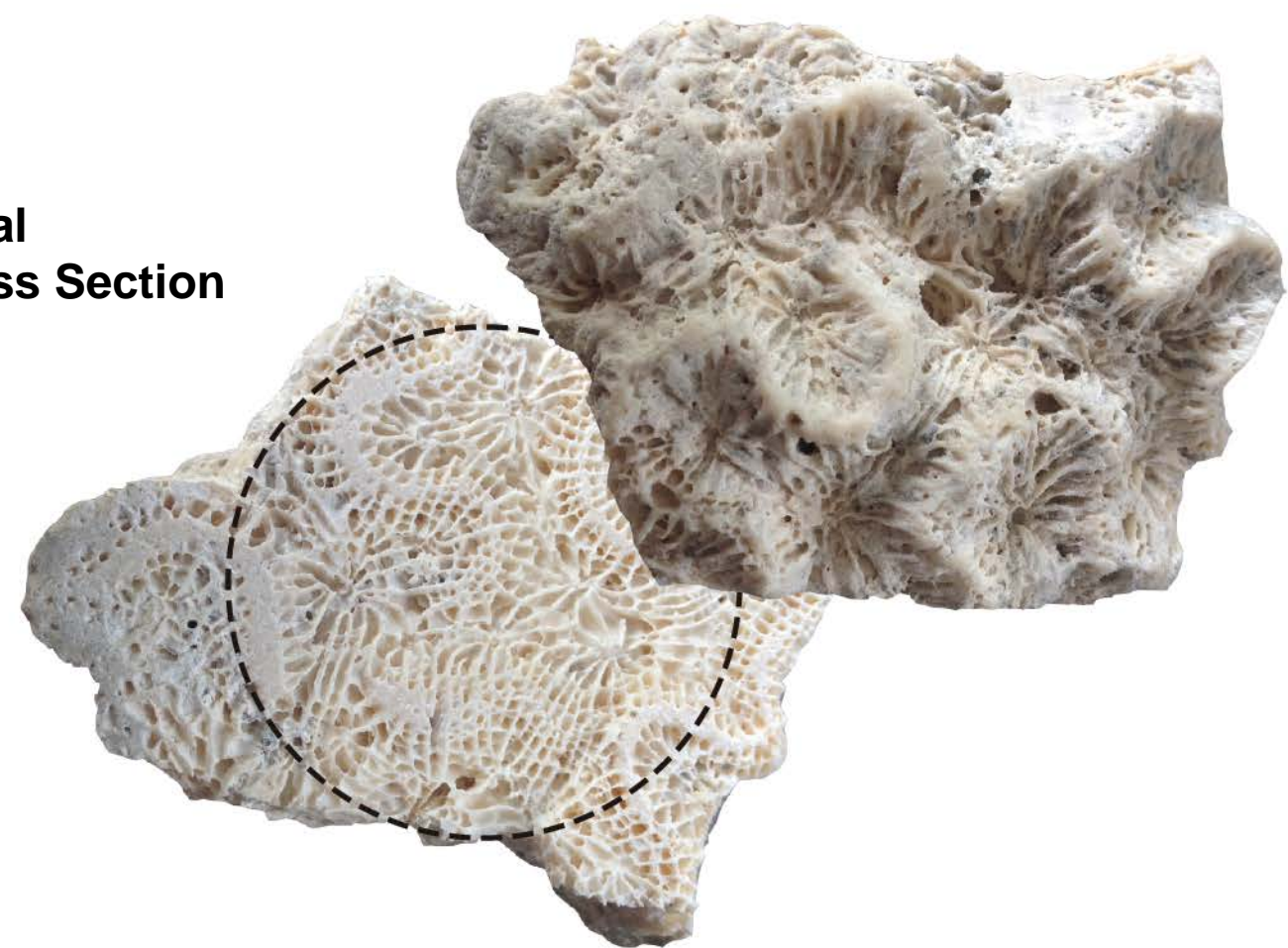
Coral Gables Miracle Mile & Giralda Avenue Streetscape Design

Bike : Proposed Design – 80 Racks (22 Within City Parking Garages)

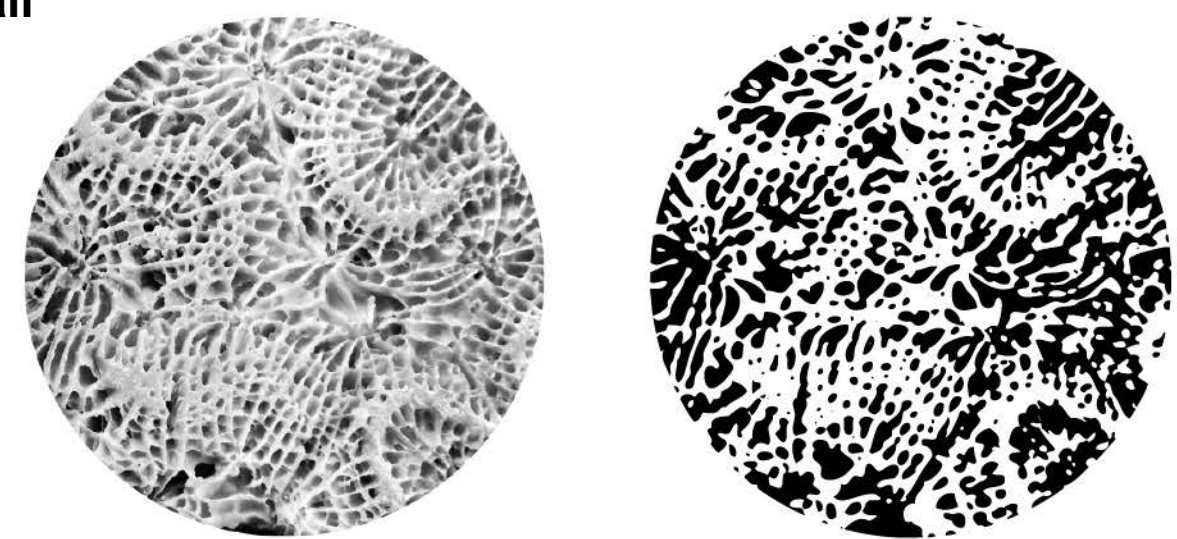


Elements : **Manhole Covers** (*Custom*)

Coral
Cross Section



Detail



Elements : **Utility Boxes** (*Custom*)



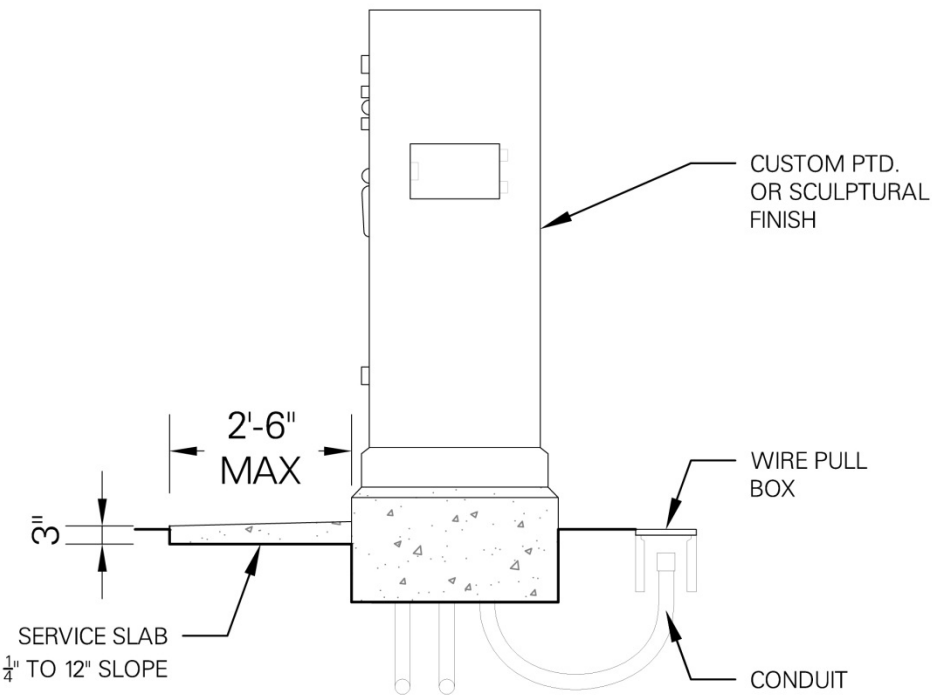
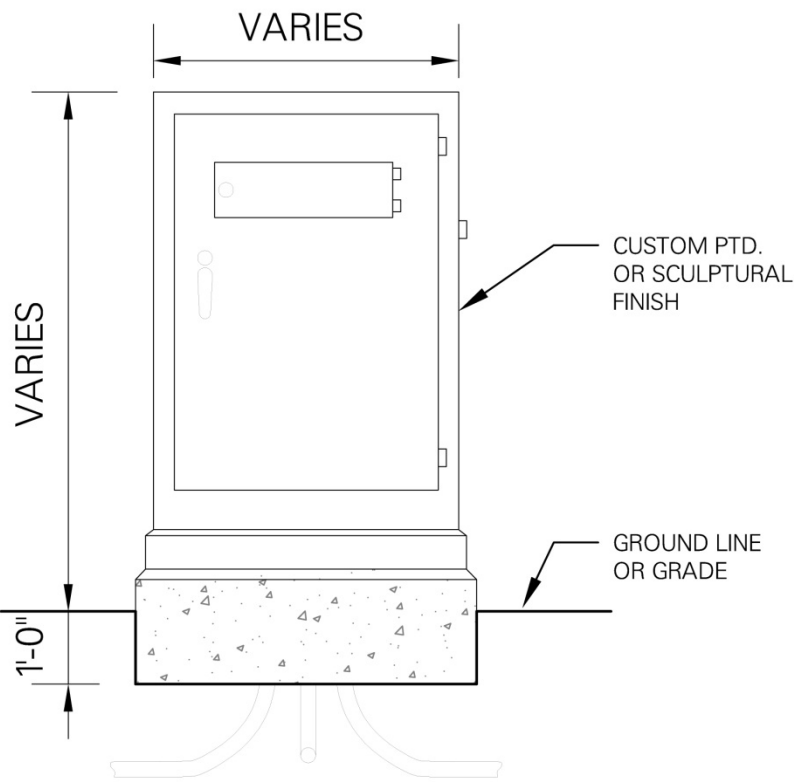
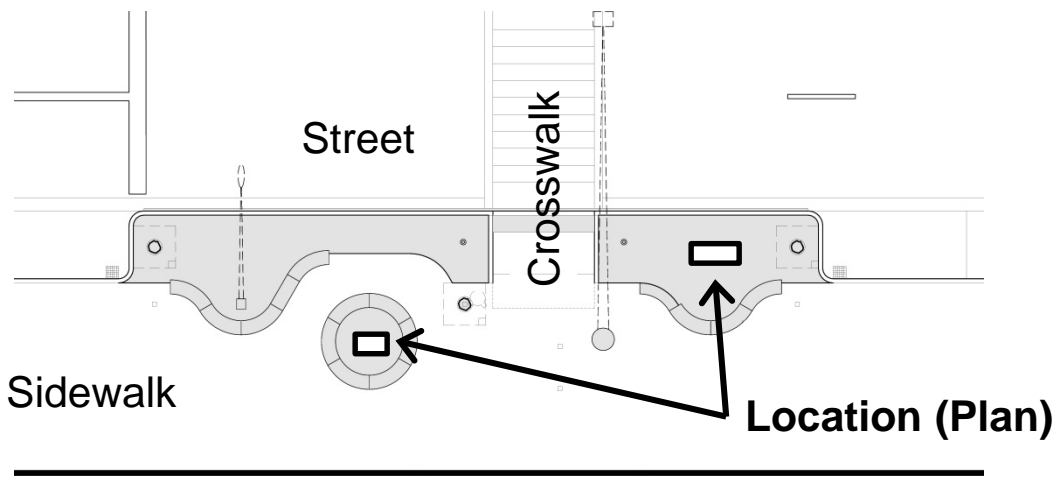
All boxes are to be painted steel, primed white and prepared for artist intervention.

The idea is to camouflage them and integrate them into planters as much as possible but make the camouflage special and subtle.

Material : Metal and Custom Paint Finish

Application: Custom, sculpture seating, designed as various heights creating different experiences

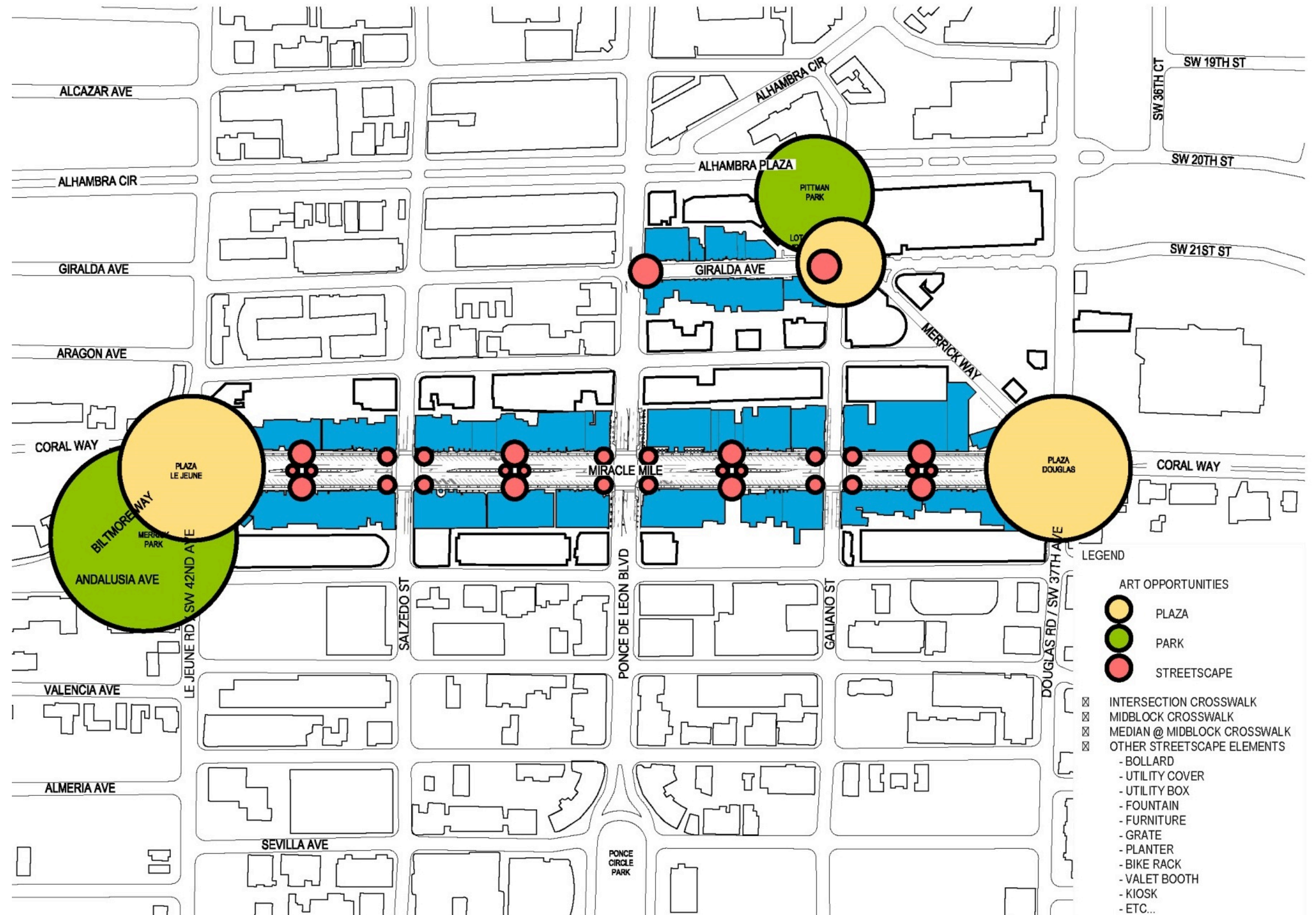
Integrated System: Lighting, Storm water collection



Art in Public Places

Streetscape Elements : Art

- I. **Plazas:** Opportunities for large installation for seasonal events and weekend activities.
- I. **Parks:** network of art elements which can be permanent and/or anchors within the neighborhood.
- I. **Streetscape:** more dynamic and interactive with pedestrian traffic
- II. **Rooftops:** along with the hopeful integration of solar collectors on the roofs of MM & GA addresses, art can help create a reason to look up and experience the place in all dimensions



Defining the Limit of the Sidewalk: with or without a Curb

Curb : Precedents



Curb : Precedents



Curb : Precedents



Curbless : Precedents



Curbless : Precedents, Madison Square Park



Curbless : Precedents, Madison Square Park



Curbless : Rendering



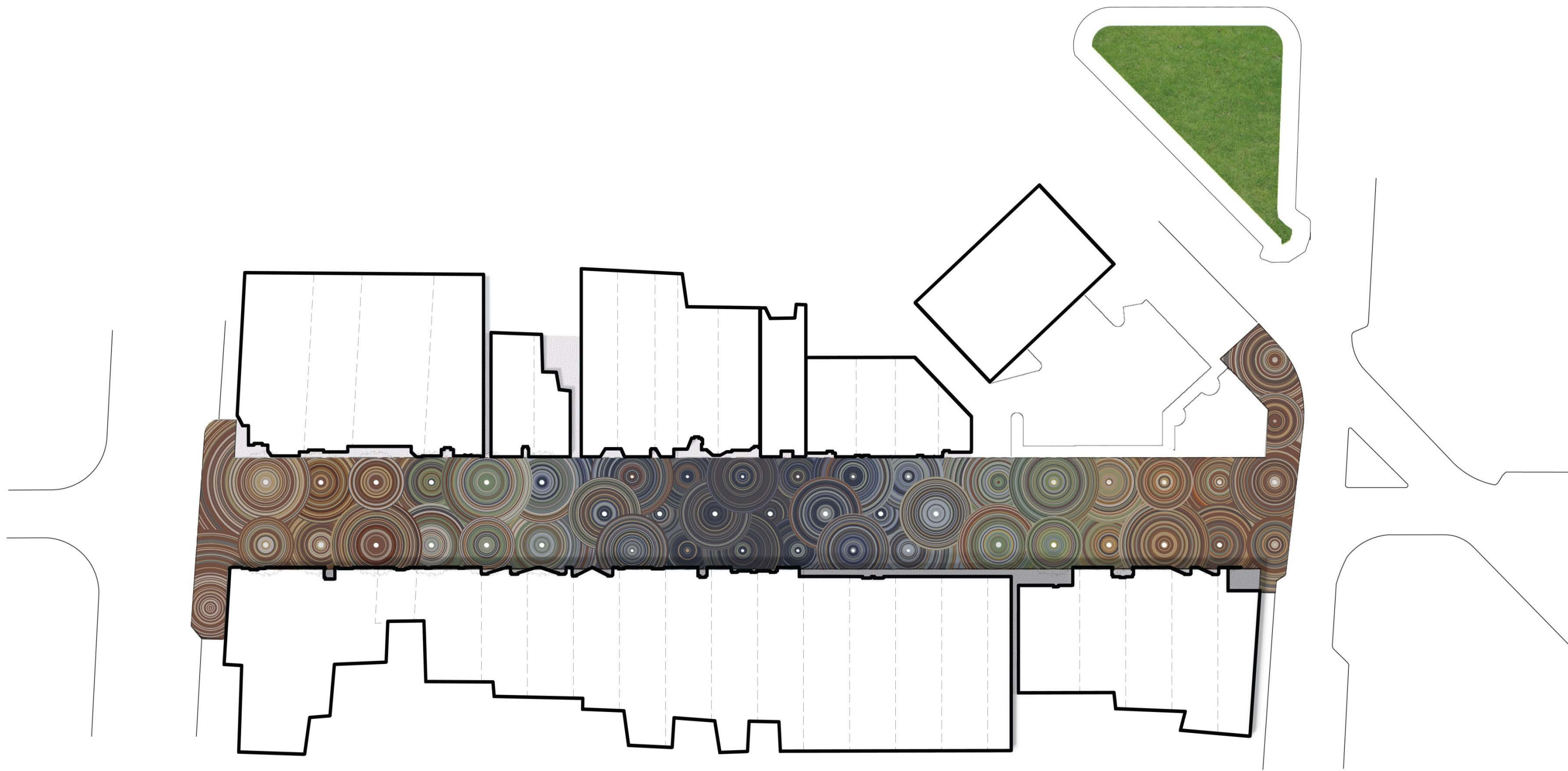
Paving Concept – **Celebrate the Rain**

Giralda Avenue

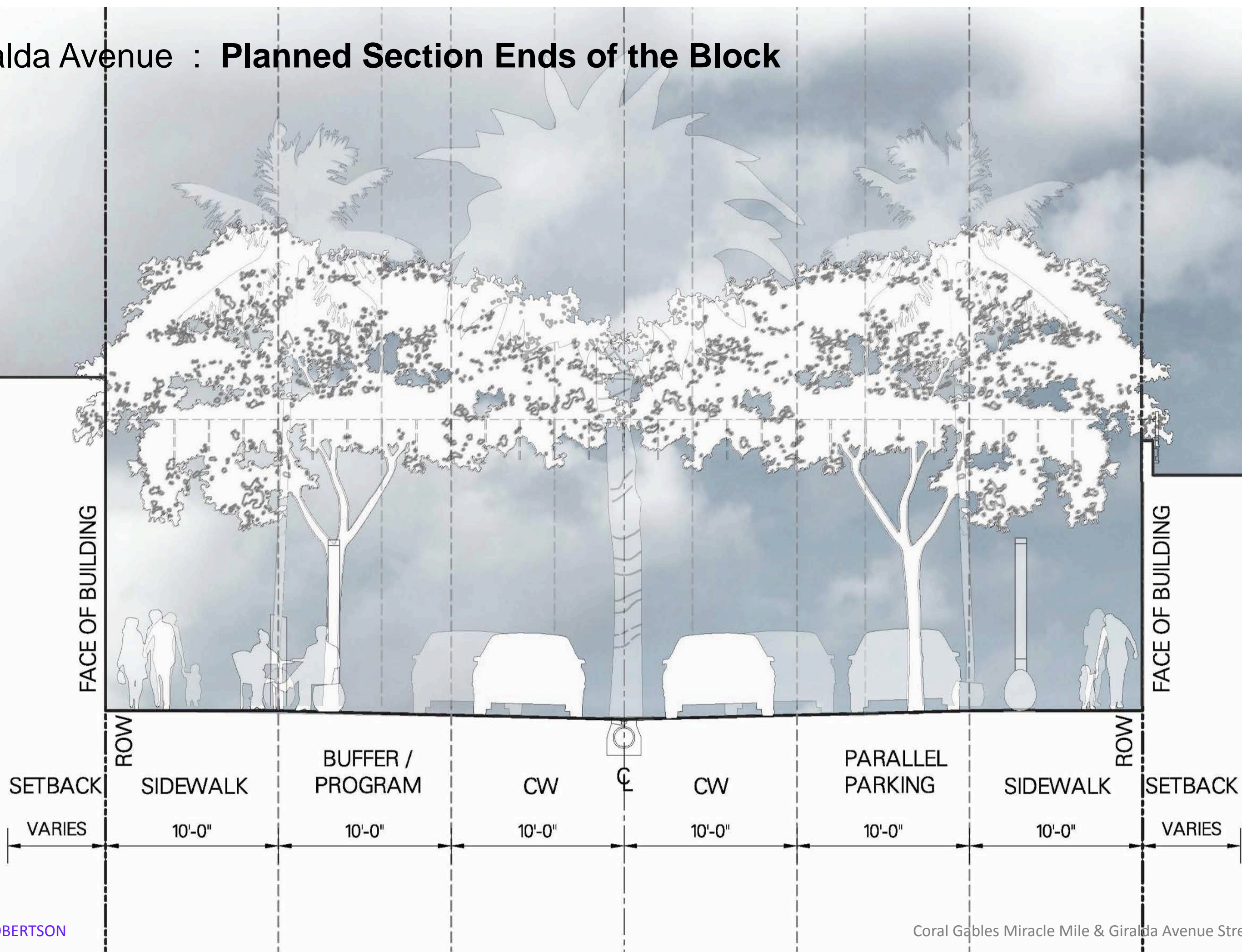
Vision for Giralda Avenue: Rendering



Giralda Avenue: **Paving Study** (*Field of Pattern*)



Giralda Avenue : Planned Section Ends of the Block



Giralda Avenue: Existing



Giralda Plaza: Proposed





Thank you!