



The Village of Palmetto Bay's
Path to Developing and
Assessing an Urban Forestry
through Inventory Assessment
and Beautification Projects

- The Village of Palmetto Bay has more than 24,469 residents who enjoy its beautiful surroundings and family-oriented atmosphere.
- Incorporated on Sept. 10, 2002, the Village of Palmetto Bay is the 33rd municipality in Miami-Dade County.
- Palmetto Bay is 8.8 square miles and is situated immediately west of beautiful Biscayne Bay, east of the southbound center lanes of US-1, south of SW 136th ST and North of SW 184th ST.
- In the short time span of 14 years, the Village has succeeded in building community character by creating a distinct community identity through the installation of over a 1,000 plus street trees of varying species.
- Our urban forestry program is dedicated to planting and maintaining trees in the municipal right of way and Village Parks on a daily basis.

PROJECTS COMPLETED

VILLAGEWIDE TREE PLANTING PROJECT

- From 2006 – 2013 the Village planted trees on half section line roadways:
 - SW 144th Street
 - SW 160th Street
 - SW 92nd Avenue
 - SW 82nd Avenue

BUCKET TRUCK PURCHASE

- Total Project Cost of \$143,000
- Urban Forestry Grant of \$20,000



STREET TREE INVENTORY PROJECT

- Project Cost of \$55,734
- Urban Forestry Grant of \$15,000
- All public trees (trees in right-of-ways- streets), on public property, and in park
- Contractor commenced inventory July 2014 and work was completed by January 2015
- Over 25,565 trees were inventoried



Q 9705 E Hibiscus St, Palmetto

Query Builder

Export Selection

Trees

SOURCE: Trees
TREE_SPEC: Live Oak
DBH: 10
CONDITION: 3.5 - Good/Fair
COND_NOTE:
COND_NOTE2:
COND_NOTE3:
NOTES:
LATITUDE: 25.6368643692
LONGITUDE: -80.3209406245
SCI_NAME: Quercus virginiana
OWNERSHIP: ROW
MainID: 3337
FACILITY: null

TREE_SPECI	DBH	CONDITION	COND_NOTE_	LATITUDE	LONGITUDE	SCI_NAME	OWNERSHI	MainID	FACILITY
Green Buttonwood	7	3.5 - Good/Fair	Overhead Utilities	25.63673464	-80.32078001	Conocarpus erectus	ROW	3336	null
Live Oak	10	3.5 - Good/Fair		25.63686437	-80.32094062	Quercus virginiana	ROW	3337	null
Live Oak	8	3.5 - Good/Fair		25.63685332	-80.32102299	Quercus virginiana	ROW	3338	null
Live Oak	8	3.5 - Good/Fair		25.63685272	-80.32112527	Quercus virginiana	ROW	3339	null
Live Oak	7	3.5 - Good/Fair		25.63685878	-80.32120718	Quercus virginiana	ROW	3340	null
Live Oak	8	3.5 - Good/Fair		25.63685783	-80.32129178	Quercus virginiana	ROW	3341	null
Live Oak	7	3.5 - Good/Fair		25.6368504	-80.32137904	Quercus virginiana	ROW	3342	null
Live Oak	7	3.5 - Good/Fair		25.63684743	-80.32149586	Quercus virginiana	ROW	3343	null
Live Oak	6	3.5 - Good/Fair		25.63684266	-80.32163734	Quercus virginiana	ROW	3344	null
Live Oak	7	3.5 - Good/Fair		25.6368409	-80.32172297	Quercus virginiana	ROW	3345	null
Live Oak	4	3.5 - Good/Fair		25.63683571	-80.32180839	Quercus virginiana	ROW	3346	null

MILLION DOLLAR ORCHID PROJECT

- Fairchild Tropical Botanical Garden's launched the Million Orchid Project, a new initiative to replant native orchid plants in urban landscapes within Miami-Dade
- the Village of Palmetto Bay is the second city to participate in Fairchild Tropical Botanical Garden's Million Orchid Project, in which Fairchild propagates millions of native orchids for reintroduction into South Florida's urban landscapes
- The Village has budgeted \$30,000 a year for the next five years for the Village's participation in Fairchild's Million Orchid project which will eventually result in 150,000 native orchids living in Village canopy
- The Village kicked off its participation in the million orchid program with volunteers from Richmond Heights Bio-Tech students installing orchids in the newly landscaped triangular medians on US-1
- A thousands orchid were placed in landscaped areas.

THE MILLION ORCHID PROJECT



US-1 Corridor Beautification Landscape Design (Phase I)

PROJECT BACKGROUND

- Awarded FDOT grant for beautification of existing U.S. 1 medians
- Project limits are SW 136th Street to SW 184th Street
- Project consists of approximately 24 medians including two triangular spaces
- Grant funding construction must be completed by July 2015
- Medians contain many existing tree and palm species
- Most trees to remain- removal of diseased, dying or invasive species
- FDOT standards to be followed including setbacks and clear sight lines
- Construction to happen in several phases depending on available funds
- 3 presentations to tree advisory board since summer 2014
- Coordination with public works, building, parks and planning department staff

PLANT PALETTE

- Plant palette has been developed with input from the Tree Advisory Board



WALVEIL



CRAPE MYRTLE



SATAKENTIA PALM



CURVED SABAL PALM



SOLITAIRE PALM



SOUTHERN LIVE OAK



THATCH PALM

PLANT PALETTE

- Plant palette has been developed with input from the Tree Advisory Board



WAX JASMINE



DWARF SCHEFFLERA



HORIZONTAL COCOPLUM



SAW PALMETTO



CORAL ROCK



LARGE BROMELIAD



WILD COFFEE



GREEN ISLAND FICUS



BAHAMA SENNA



RED PENTAS



DWARF BOUGAINVILLEA

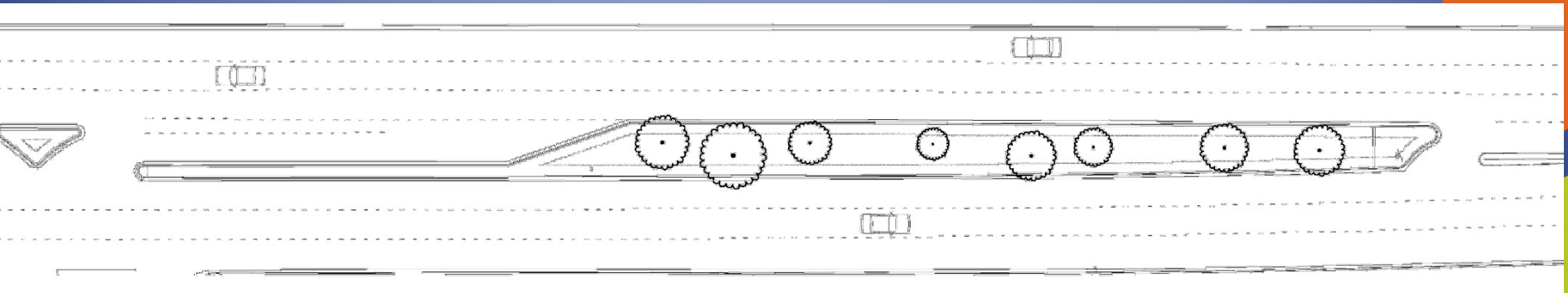


PEPEROMIA

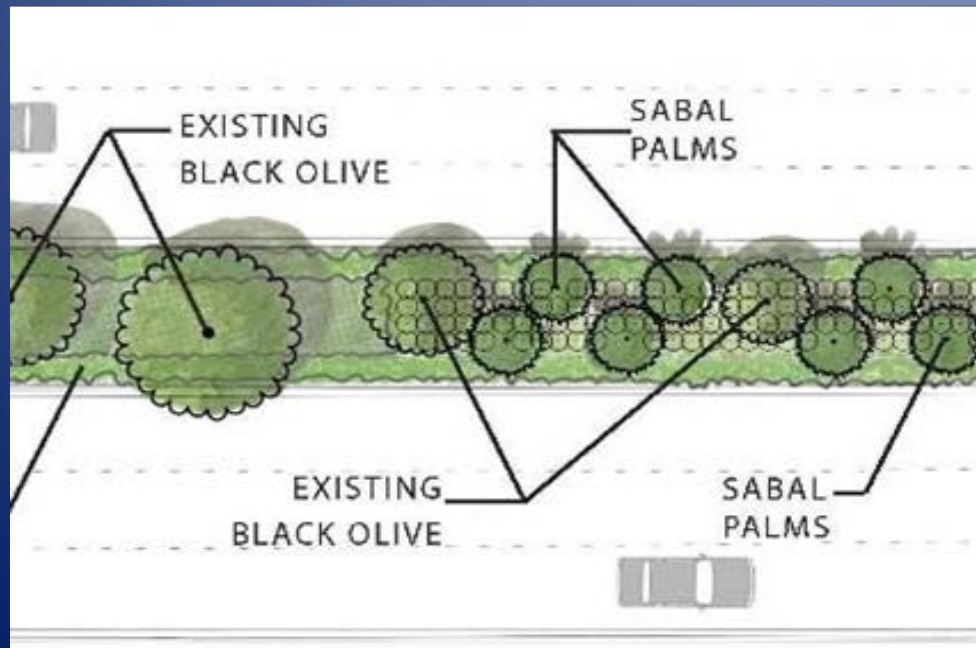
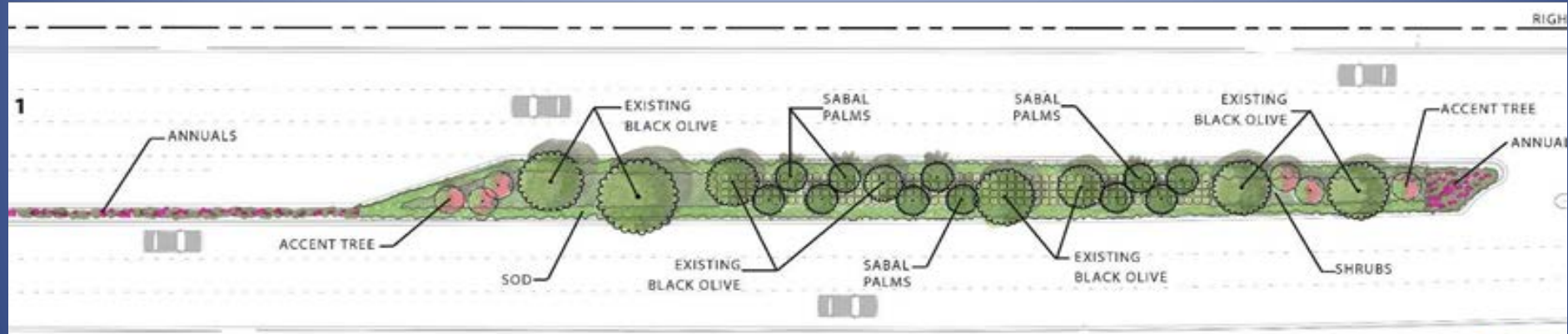


SMALL BROMELIAD

SAMPLE MEDIAN EXISTING CONDITIONS



SAMPLE MEDIAN CONCEPTUAL PLAN



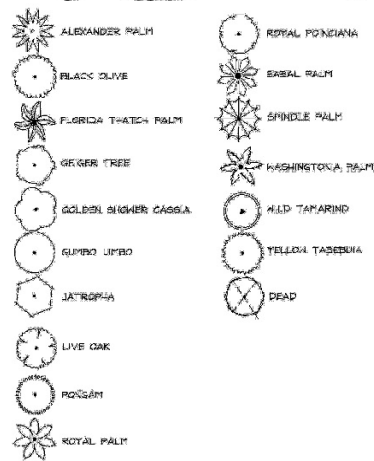
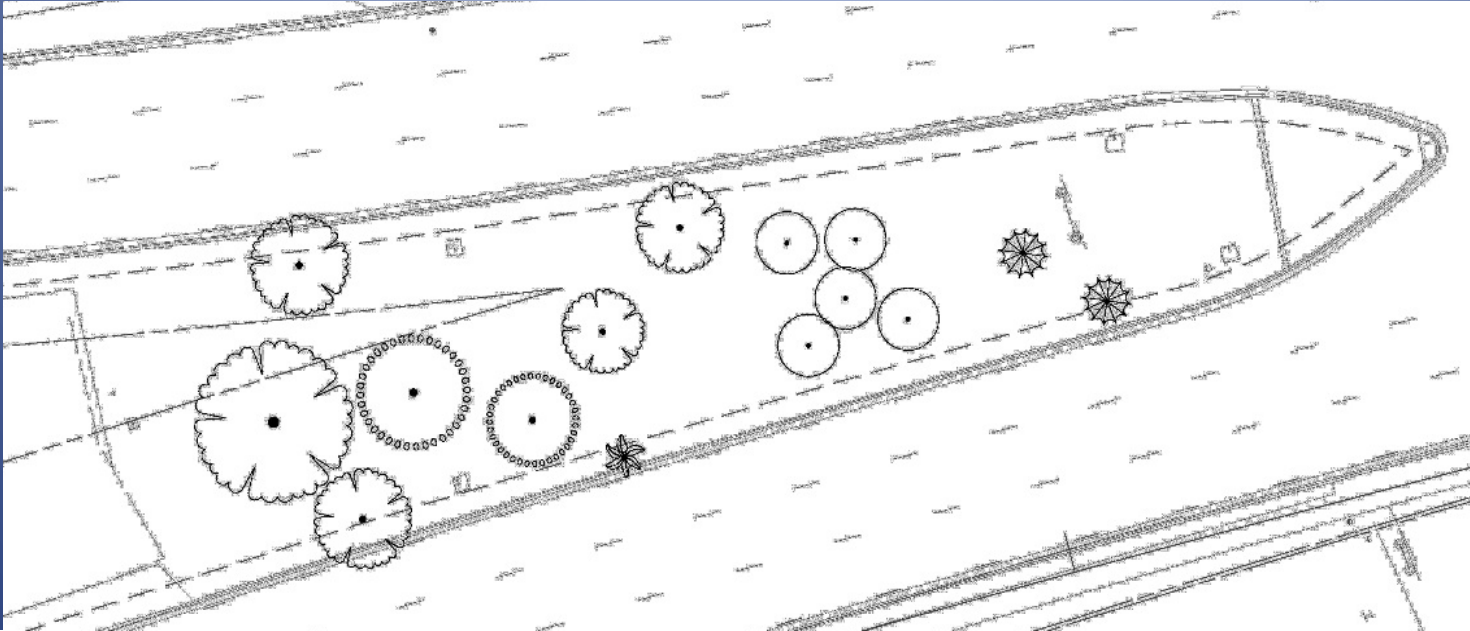
TRIANGULAR SPACES CONCEPTUAL PLAN

- At 168TH Street and 183RD Street
- Design is consistent with the DRTF goal “to create a sense of identity; a sense of community “



168TH STREET TRIANGULAR SPACE

EXISTING CONDITIONS

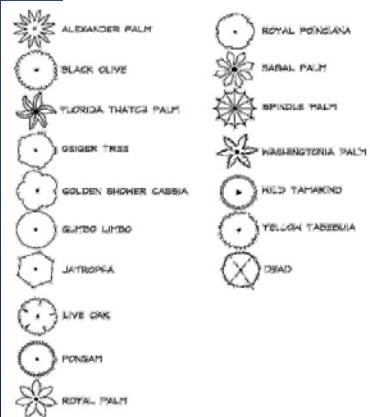
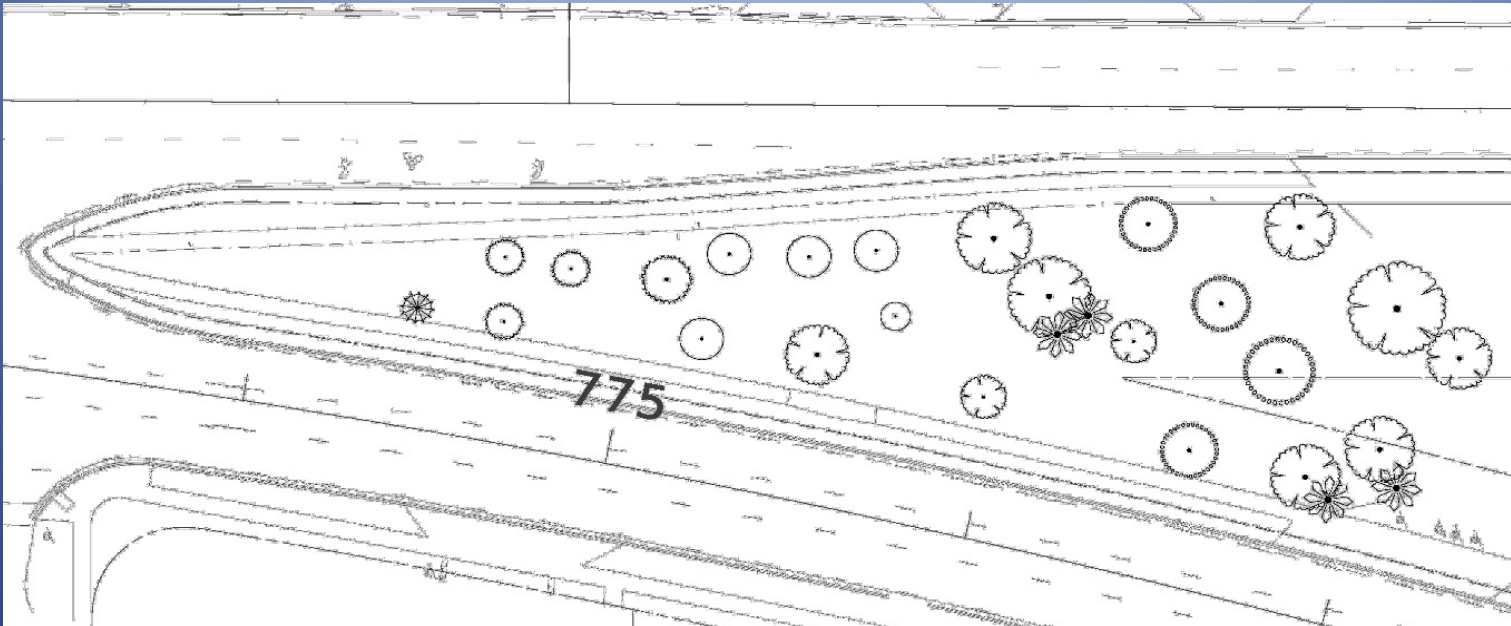


168TH STREET TRIANGULAR SPACE

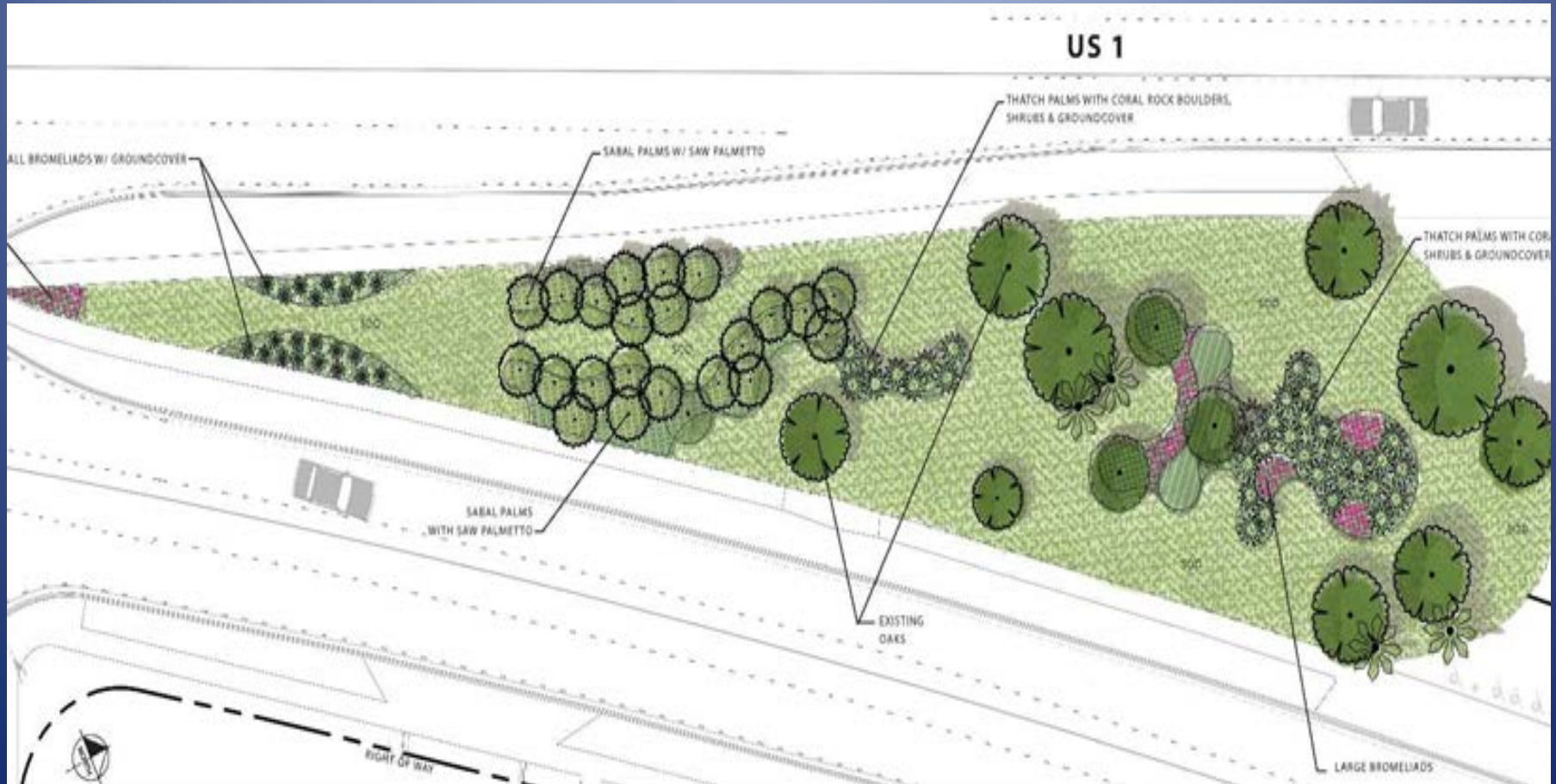


183RD STREET TRIANGULAR SPACE

EXISTING CONDITIONS



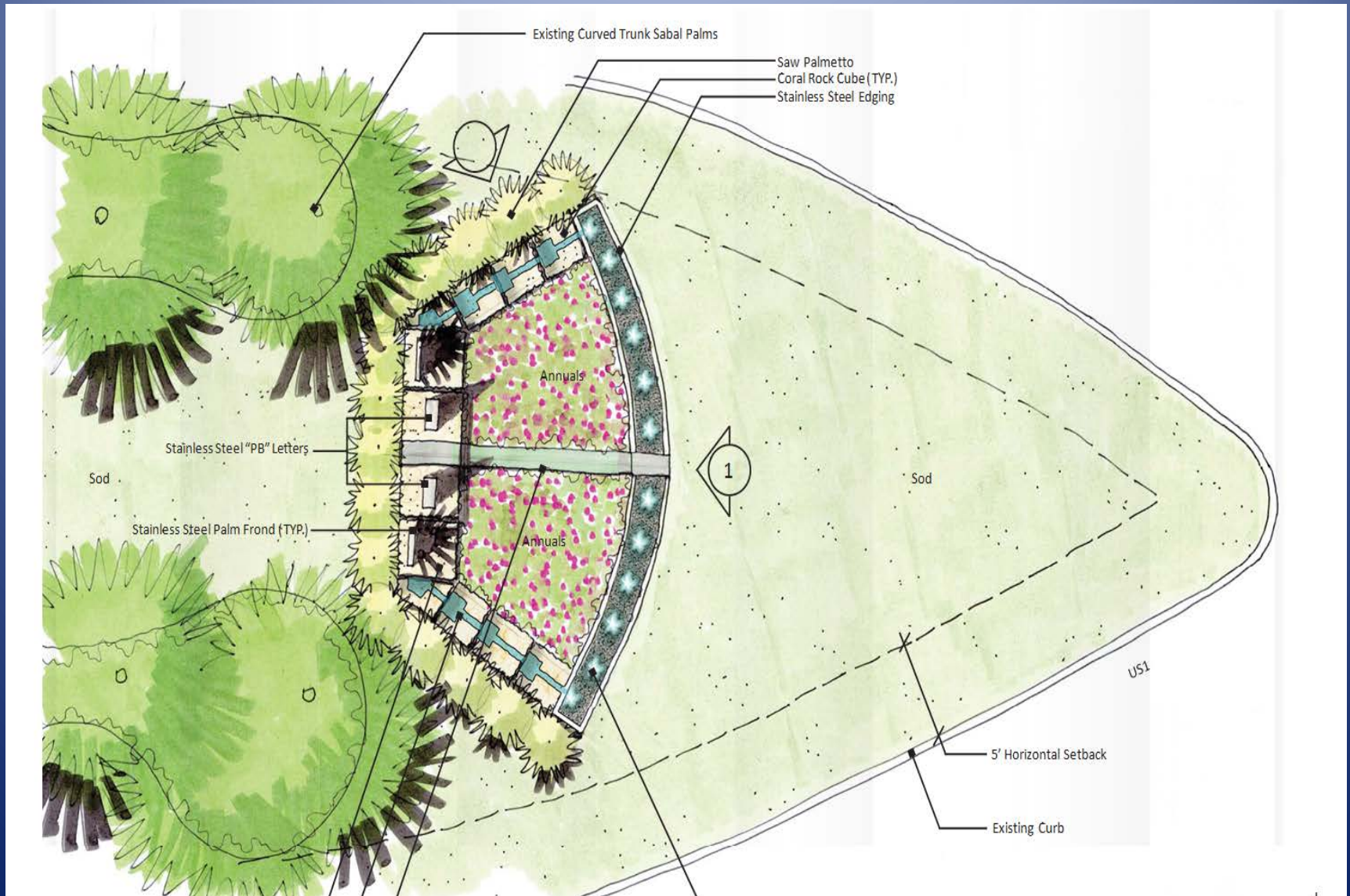
183RD STREET TRIANGULAR SPACE



WHAT'S NEXT ?

- Complete US-1 Corridor Landscape Phase II of US-1 Beautification Landscape
 - FDOT Grant funding in the amount of \$201,400 will kick off Phase II of the US-1 Beautification Project from SW 159th ST to just north of the Triangular median at SW 168th ST
- Enhanced Entryway Features within the US-1 Median
 - Triangular Median north of SW 168th ST
 - Triangular Median north of SW 183rd ST
- Complete Streets in the Downtown Redevelopment Project Area
 - Reconstruction of Franjo Road from Northbound lanes of US-1 to SW 184th ST
 - Construction of SW 179th ST and SW 178th ST
 - Reconstruction of SW 180th ST
- Implementation of Tree Management Plan

ENHANCED ENTRYWAY FEATURES

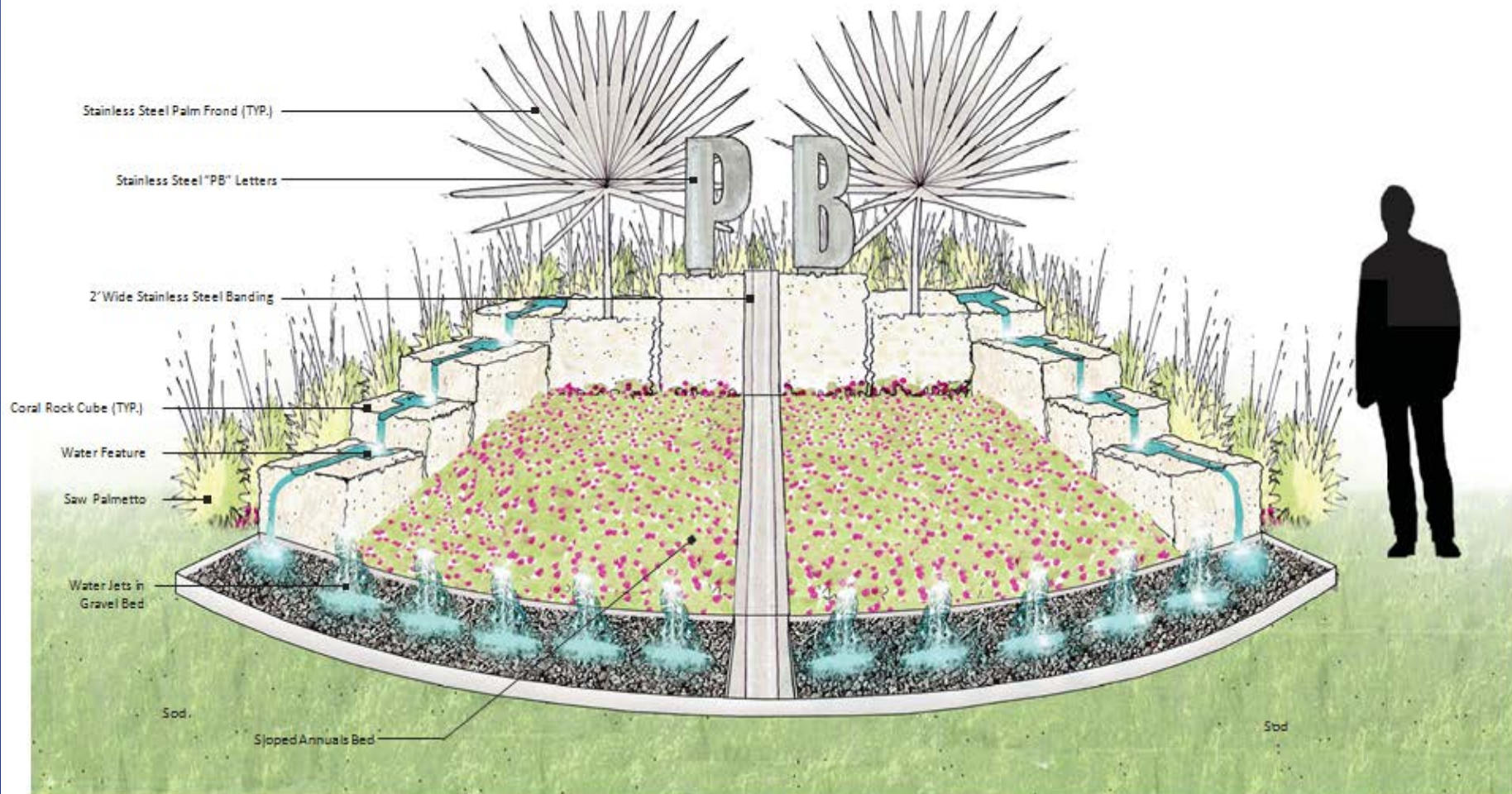




US 1 MEDIANS, 183RD STREET TRIANGLE SIGNAGE CONCEPT PLAN

Kimley»Horn
 CONSULTING ENGINEERS

DATE: 08/11/11



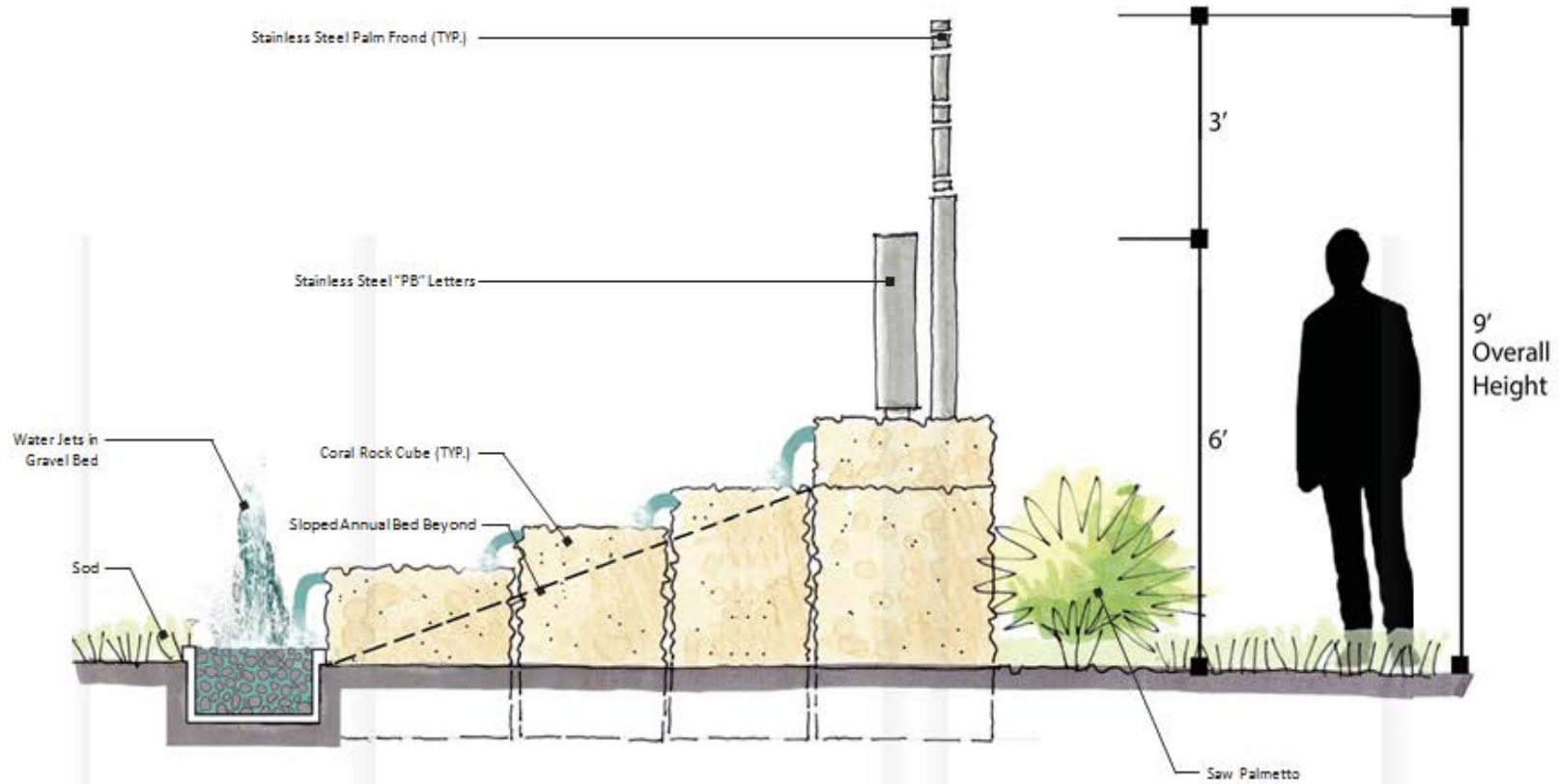
N.T.S.



US 1 MEDIANS TRIANGLE SIGNAGE CONCEPT ELEVATION 1

Kimley-Horn
Superior. Smart. Sustainable. Better.

08/16/18 11:30



N.T.S.



US 1 MEDIANS TRIANGLE SIGNAGE CONCEPT ELEVATION 2

Kimley»Horn
 ENGINEERS • ARCHITECTS • PLANNERS

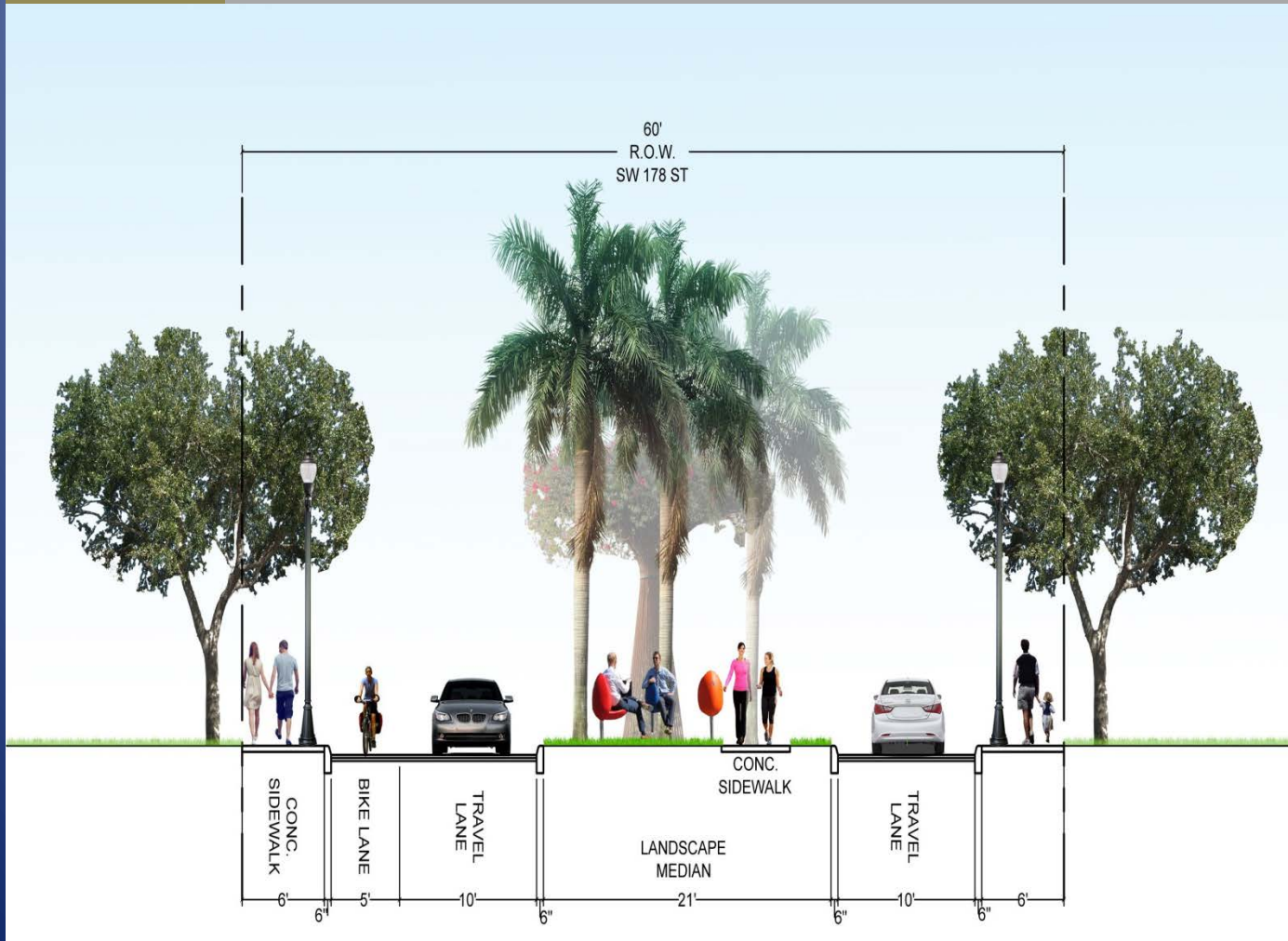
SEPTEMBER 17, 2012

COMPLETE STREETS DOWNTOWN REDEVELOPMENT

DESIGN APPROACH

FUTURE

SW 178th Street



Enhancements

- 6' Wide Concrete Sidewalks
- Westbound Bike Lane
- Westbound and Eastbound Vehicular Travel Lanes
- Maximize Shade With Trees in Bulb Outs and Medians
- Pedestrian Scale Lighting
- Linear Concrete Median with:
 - Park Lane
 - Pedestrian Areas
- Diverse Tree, Palm, and Shrub Planting
- Vendor Kiosk Space 28

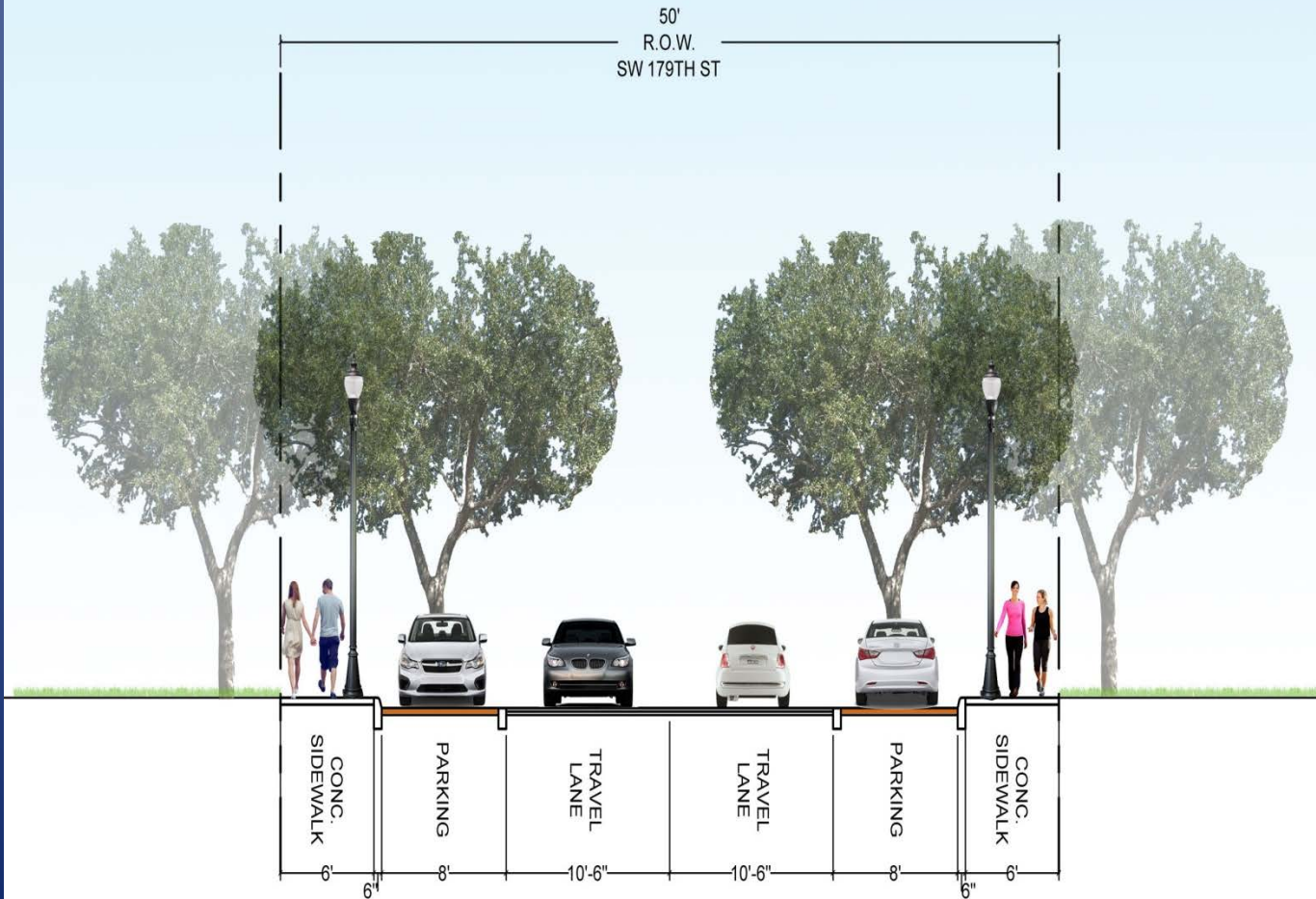
LANDSCAPE & STREETSCAPE DESIGN

DESIGN APPROACH

FUTURE

SW 179th Street

50'
R.O.W.
SW 179TH ST



Enhancements

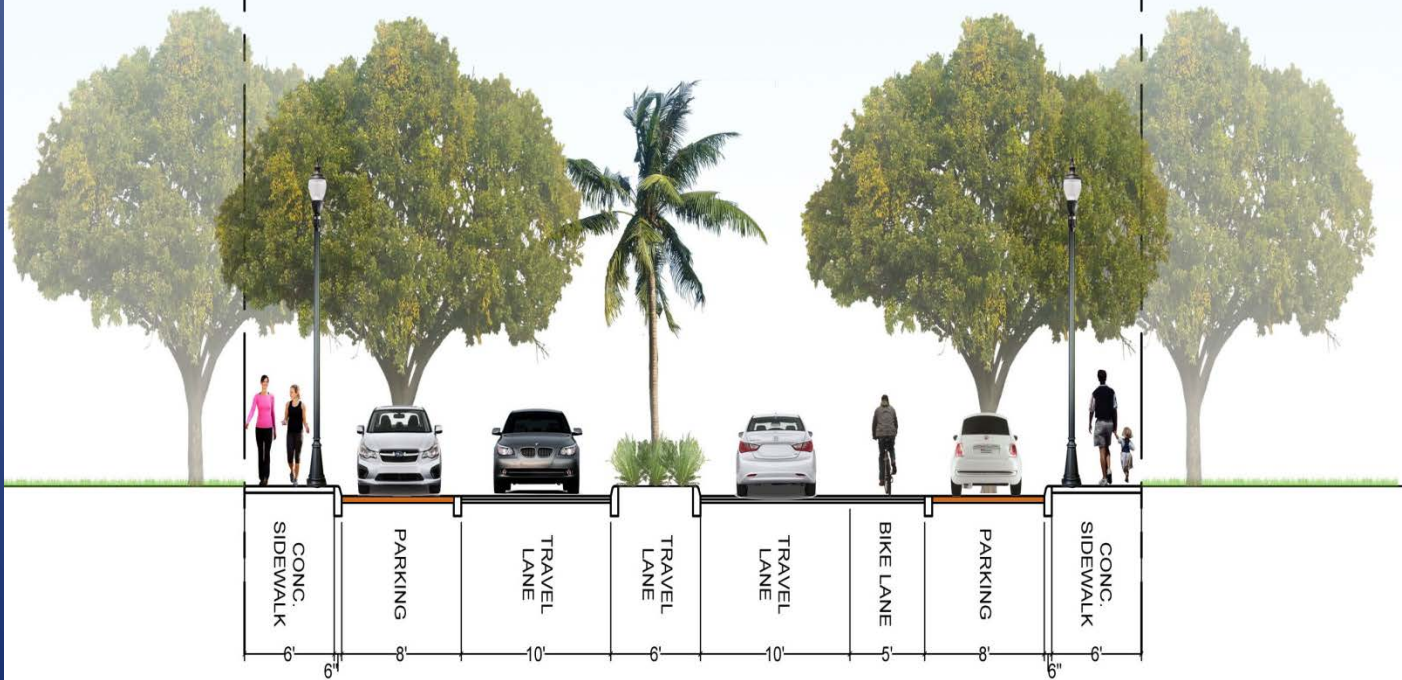
- 6' Wide Concrete Sidewalks
- Maximize Shade With Trees in Bulb Outs
- On-Street Parallel Parking with Decorative Pavers
- Westbound and Eastbound Vehicular Travel Lanes
- Pedestrian Scale Lighting

DESIGN APPROACH

FUTURE

Park Drive (SW 95th Avenue)

60'
R.O.W.
PARK DRIVE



LANDSCAPE & STREETSCAPE DESIGN

Enhancements

- 6' Wide Concrete Sidewalks
- Northbound Bike Lane
- Northbound and Southbound Vehicular Travel Lanes
- Maximize Shade with Trees in Bulb Outs
- Coconut Palms in 5' Planting Width Median to maximize shade in narrow root₃₀ space

DESIGN APPROACH

NOW

SW 180th Street



LANDSCAPE & STREETScape DESIGN



Franjo Road Corridor



QUESTIONS

