

## COMPLETE STREETS

### *PUBLIC WORKS AND WASTE MANAGEMENT PROCEDURES*

- COMPLETE STREETS ARE EVALUATED WHEN RECONSTRUCTING OR BUILDING NEW ROADWAYS
- BICYCLE AND PEDESTRIAN FACILITIES ARE REQUIRED WHEN REPLACING BRIDGES
- BICYCLE AND PEDESTRIAN RELATED IMPROVEMENTS ARE EVALUATED WHEN IMPLEMENTING RESURFACING PROJECTS

# WHAT HAS BEEN DONE?

- **SAFE ROUTES TO SCHOOL:** About 10 school sites are designed and constructed on average every year.
- **ADA (AMERICANS WITH DISABILITIES ACT):** Annual funding is allocated to provide improvements on our road rights of way for people with disabilities.
- **HIGH CRASH LOCATION STUDIES:** The worst 20 intersections in the county are identified based on severity and number of crashes (including reported pedestrian and bike crashes) and design improvements are generated for these locations.
- **TRANSPORTATION ALTERNATIVE PROGRAM:** Miami-Dade County submits project proposals on an annual basis to improve non-motorized travel in our transportation network.
- **SIDEWALK REPAIRS:** An average of 9,000 linear feet of sidewalk is repaired annually by our maintenance crew.
- **ROAD, BRIDGE, MAINTENANCE AND INTERSECTION PROJECTS:** Projects must implement improvements to pedestrian ramps and crosswalks. Slip-resistant plates have been installed for bike lanes on existing open-grate bridges.
- **GREEN BICYCLE LANES:** Green paint at conflict zones is being included in all new project locations with bicycle lanes.
- **-SIGNALIZATION IMPROVEMENTS:**  
Traffic signal lenses upgraded to 12" size LED
  - Pedestrian signals are being upgraded to countdown
  - Mast Arm Street signs have been upgraded to illuminated signs
  - All proposed vehicle detector loops are able to detect bicycles
  - Rapid Rectangular Flashing Beacons have been implemented to increase awareness of pedestrians crossings
  - Improved pedestrian signal timing plans (including exclusive pedestrian phases, lead pedestrian intervals, extended pedestrian timing intervals) are being implemented where it has been determined they are needed
- **BIKE/PEDESTRIAN CROSSWALKS:** MDCPWWM has pioneered a new combo bicycle/pedestrian crosswalk for off-road paths. It has also implemented the latest FHWA guidelines for off-road paths with exclusively designated spaces for bicycles and pedestrians.
- **ACTIVE COMMUNICATION AND COORDINATION:** PWWM has met with diverse community groups and organized several interagency meetings to evaluate resources and improve coordination for the expansion of the non-motorized network within Miami-Dade County

# WHAT HAS BEEN DONE?

(COMPLETED / ONGOING PROJECTS)

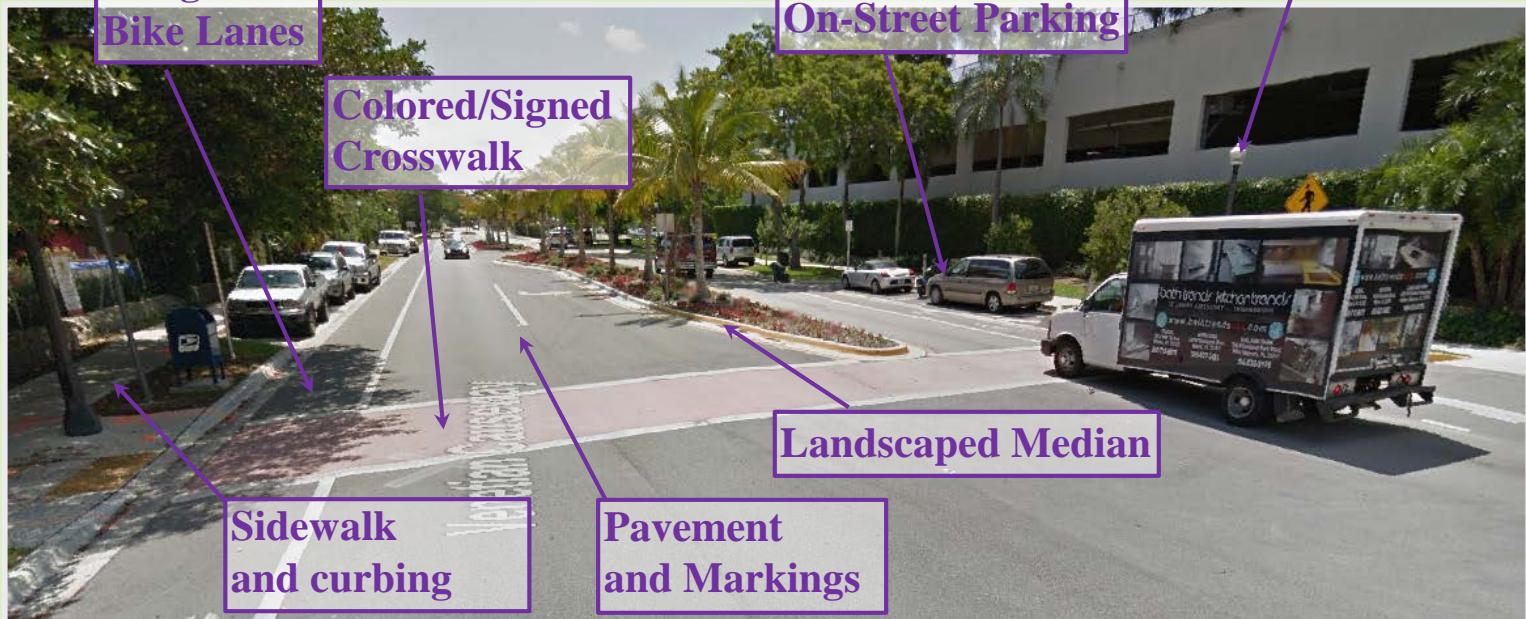
- Venetian Causeway Streetscape Improvement Project from Biscayne Island to Belle Isle
- Old Cutler Road Shared Use Path from SW 216 Street to Cocoplum Circle
- Commodore Trail from Lejeune road to Aviation Avenue
- Bear Cut Bridge Rehabilitation
- Virginia Key Shared Use Path from Virginia Key Road to Mast Academy
- SW 27 Avenue - from South Bayshore Drive to US-1
- SW 97 Avenue from SW 72 Street to SW 40 Street
- SW 72 Street from SW 127 Avenue to SW 117 Avenue
- NW 87 Avenue from NW 164 Street to SW 186 Street
- SW 216 Street from SW 112 Avenue to HEFT
- SW 216 Street from HEFT to Old Cutler Road
- Miami River Greenways
- Miami Avenue Bridge Rehabilitation

# VENETIAN CAUSEWAY STREETSCAPE IMPROVEMENTS



**Designated  
Bike Lanes**

**Decorative Lighting**



**On-Street Parking**

**Colored/Signed  
Crosswalk**

**Landscaped Median**

**Sidewalk  
and curbing**

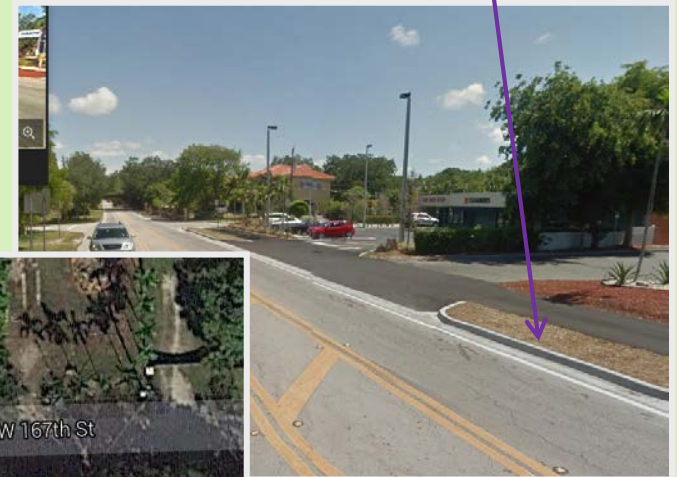
**Pavement  
and Markings**



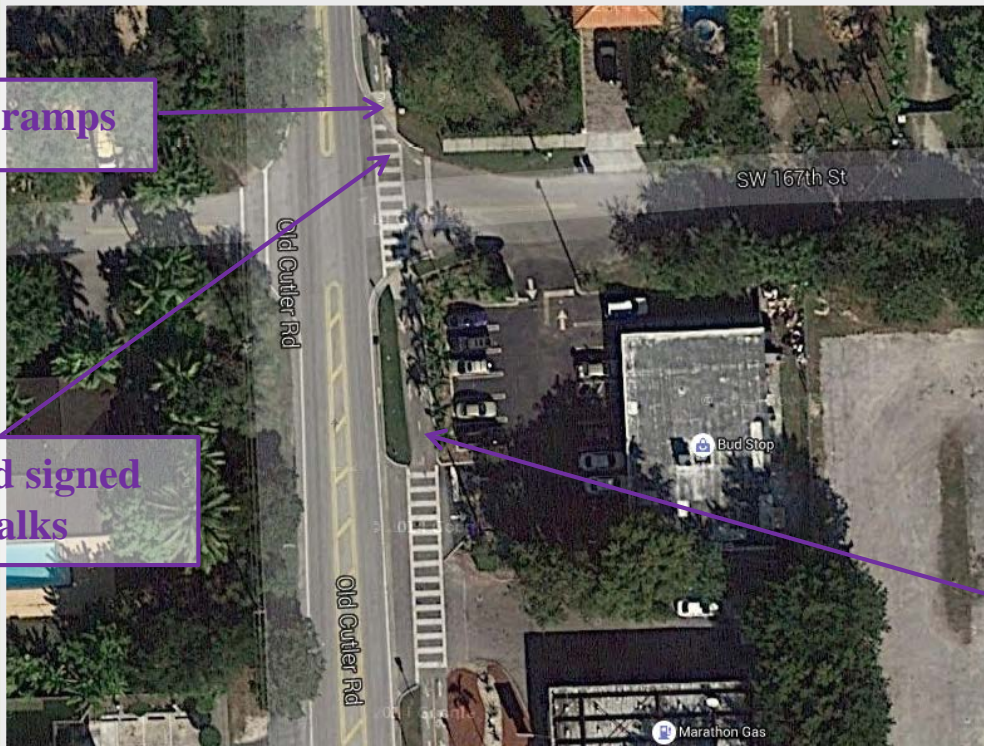
# OLD CUTLER ROAD – SW 216 ST TO COCOPLUM CIRCLE



**Physical Separation between roadway and path**



**Reconstructed ramps**

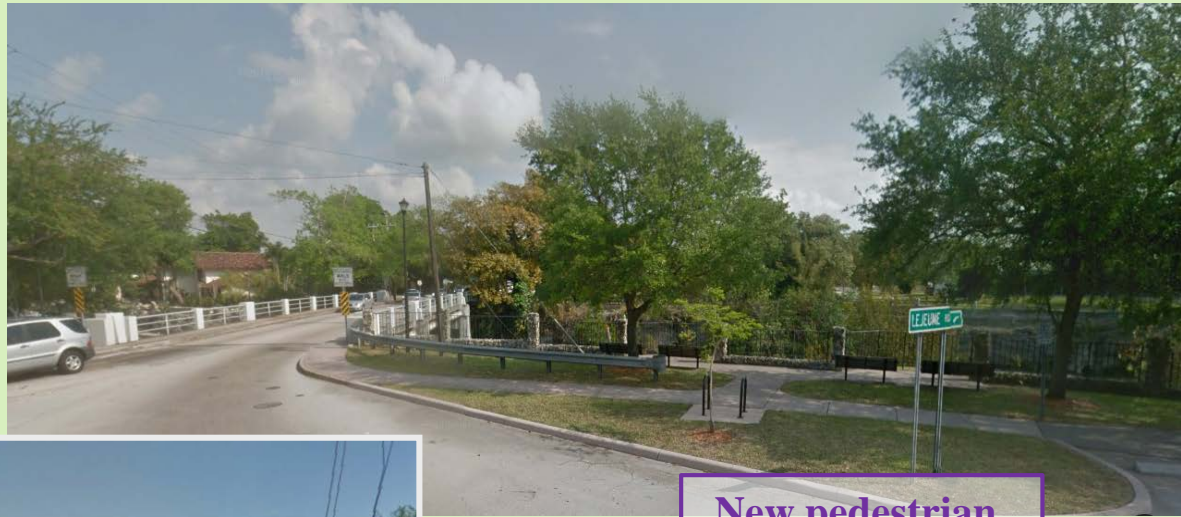


**Marked and signed crosswalks**

**Path Markings**



# COMMODORE TRAIL - LEJEUNE TO AVIATION AVENUE



New pedestrian bridge



Colored/Wider Sidewalk



New guardrail

# RICKENBACKER CAUSEWAY – BEAR CUT BRIDGE

**Wider Shared  
Use Path**



**Pavement and  
Markings**

**Double line  
vibratory markings**

**Safety Rail**

**New Lighting**

**New protected  
shared use path**





# VIRGINIA KEY SHARED USE PATH – VIRGINIA KEY ROAD TO MAST ACADEMY



**Signed and Marked  
Crosswalk**

**Refuge Island  
For safer crossing**

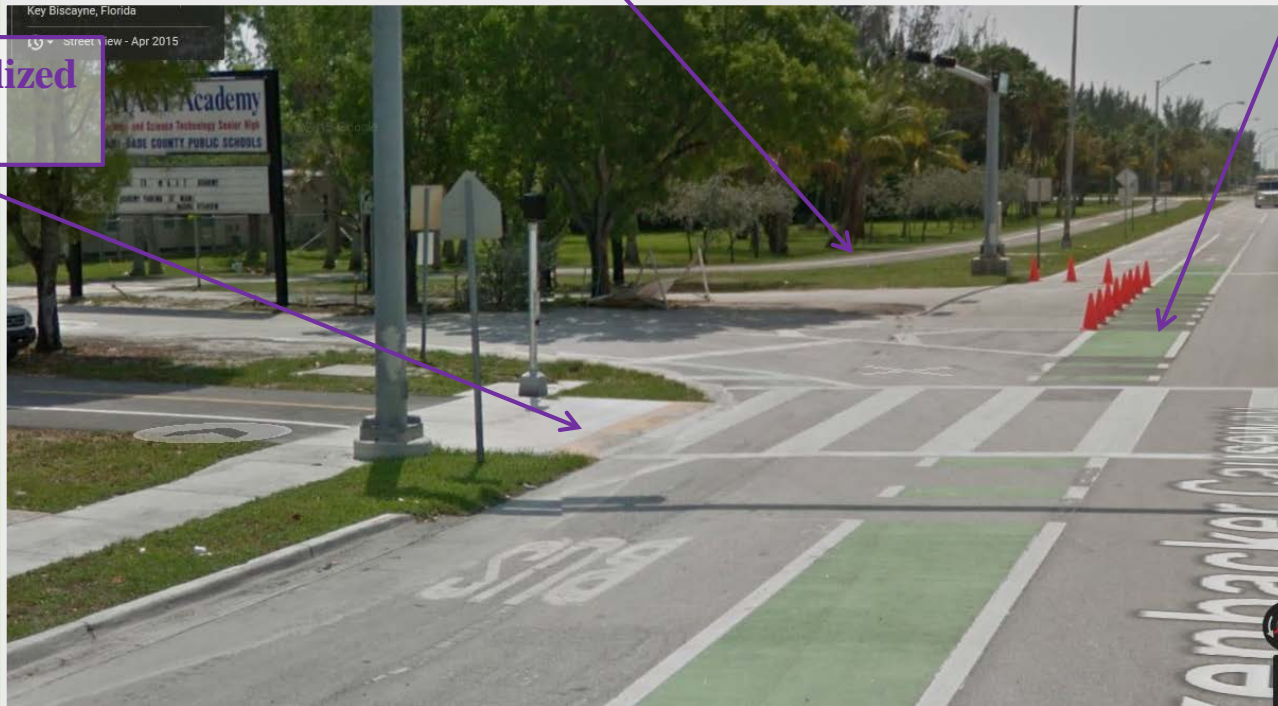
**Path connection  
to new bridge path**

**Signalized  
Crosswalk**





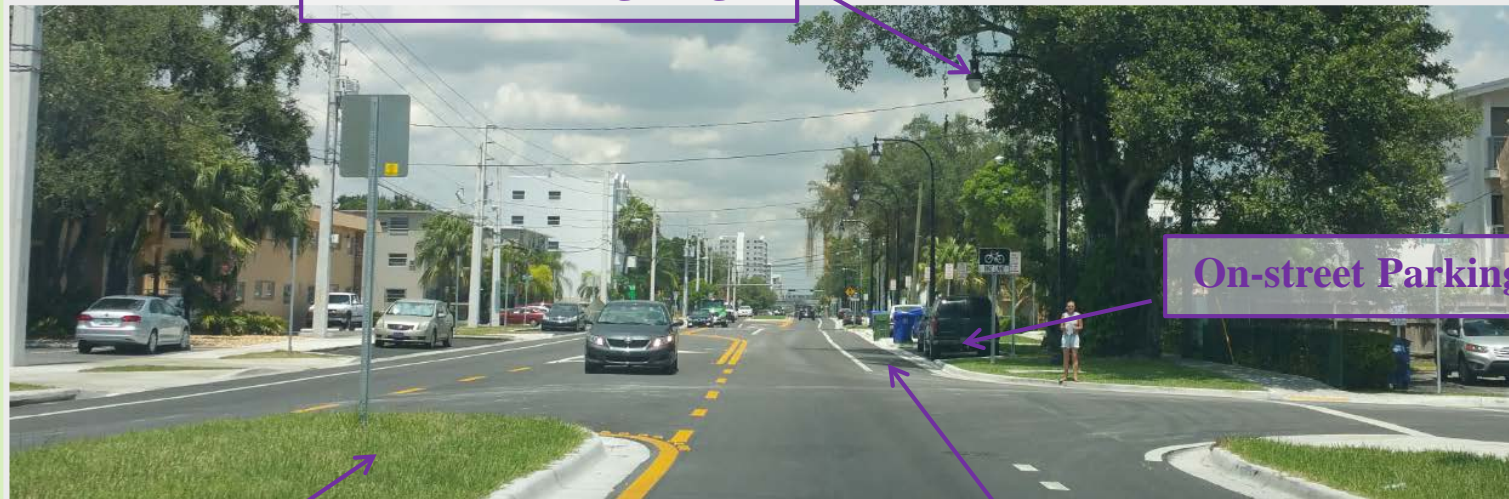
# VIRGINIA KEY SHARED USE PATH – VIRGINIA KEY ROAD TO MAST ACADEMY



## SW 27 AVENUE FROM SOUTH BAYSHORE DRIVE TO US-1



**Decorative Lighting**



**On-street Parking**

**Median**

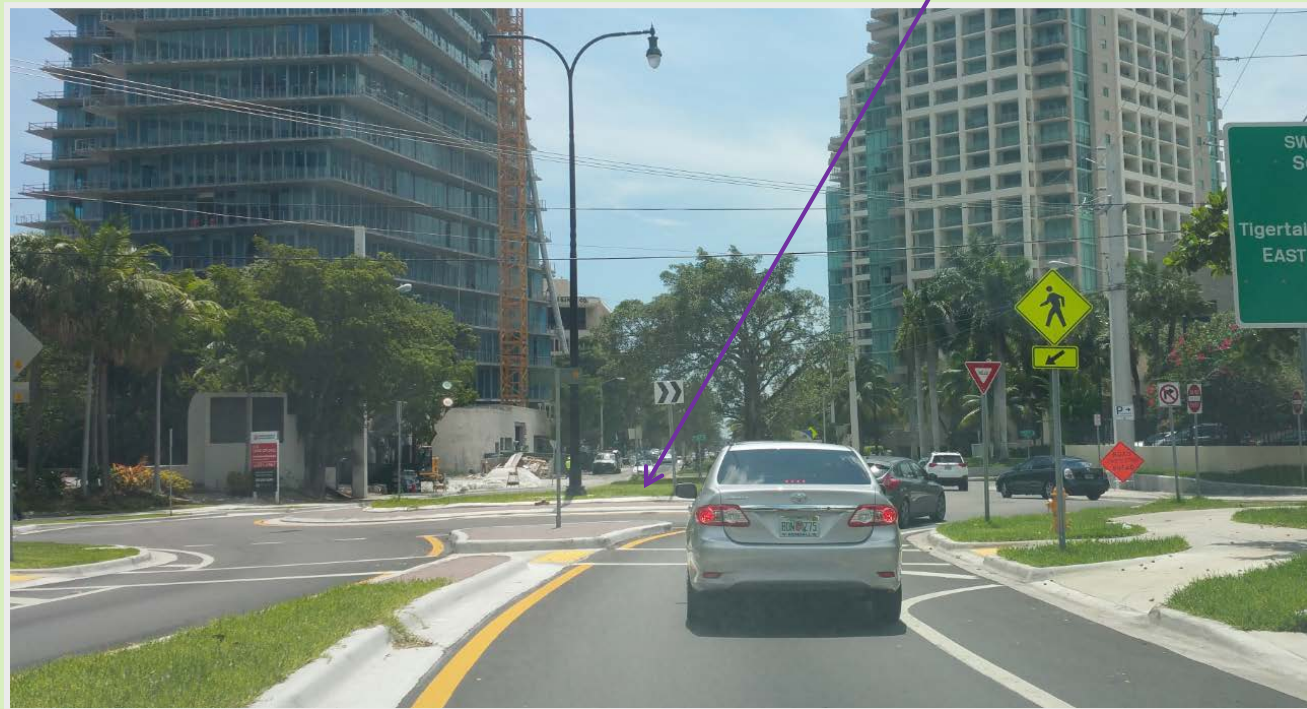
**New Designated  
Bike Lane**



# SW 27 AVENUE FROM SOUTH BAYSHORE DRIVE TO US-1



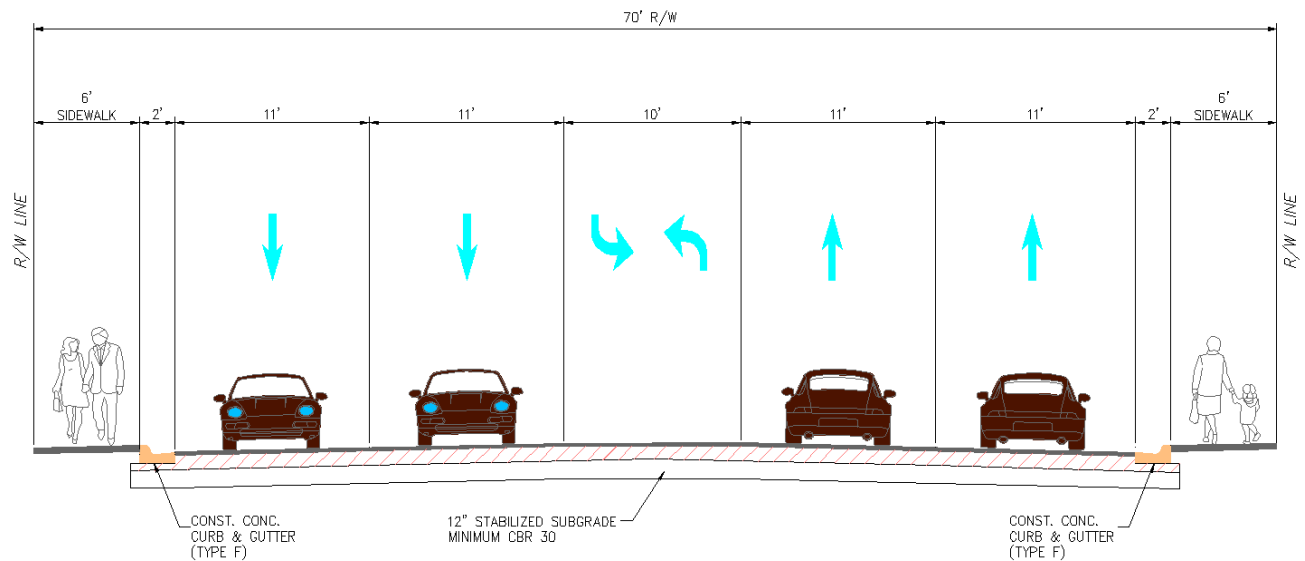
New Roundabout



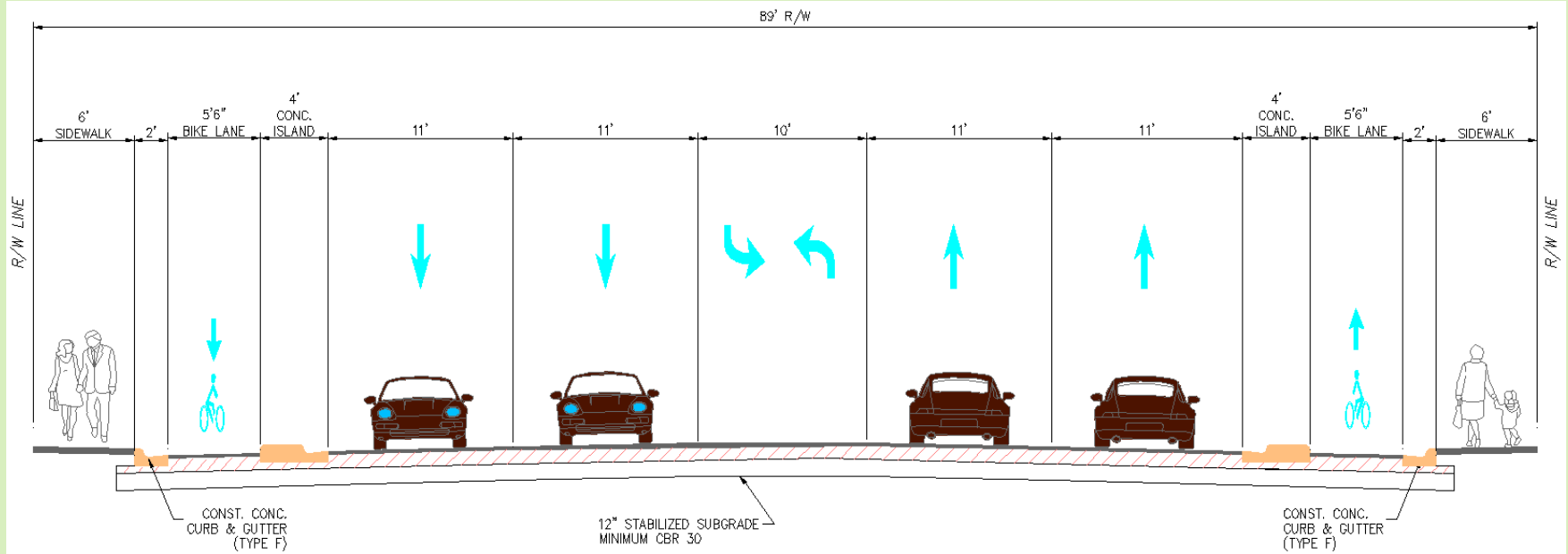


# CHALLENGES

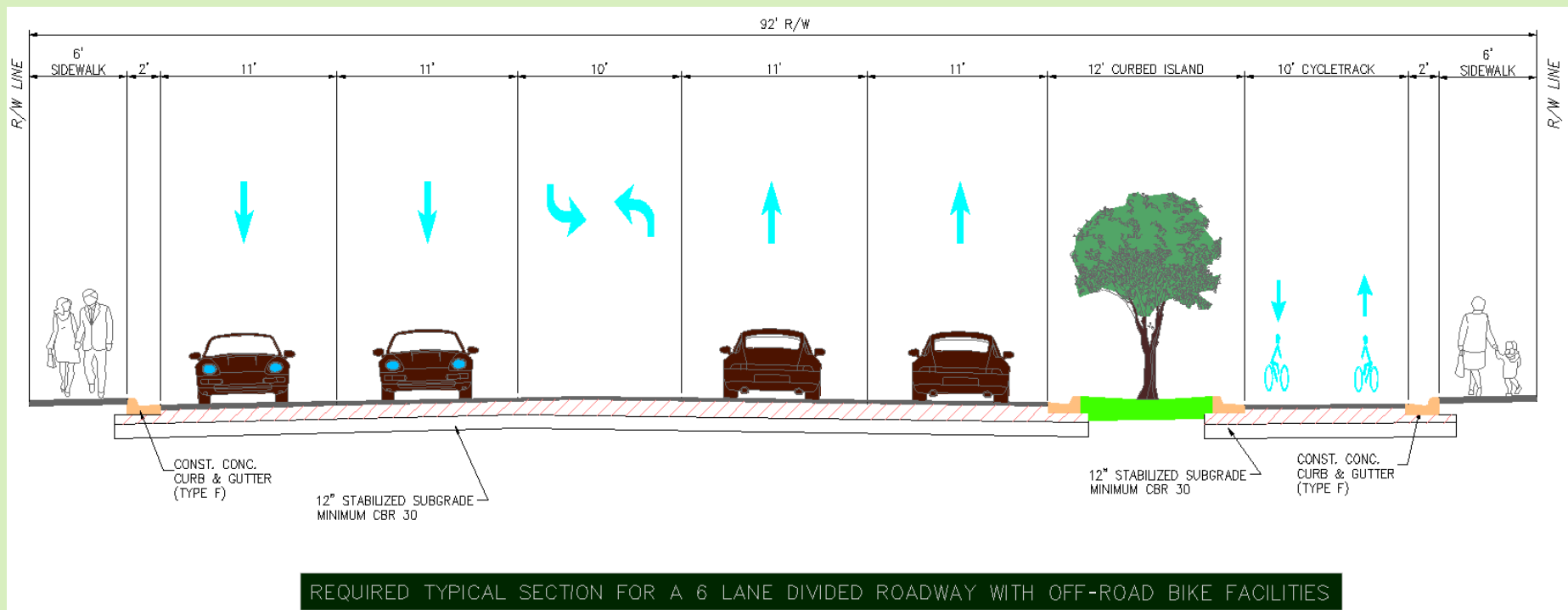
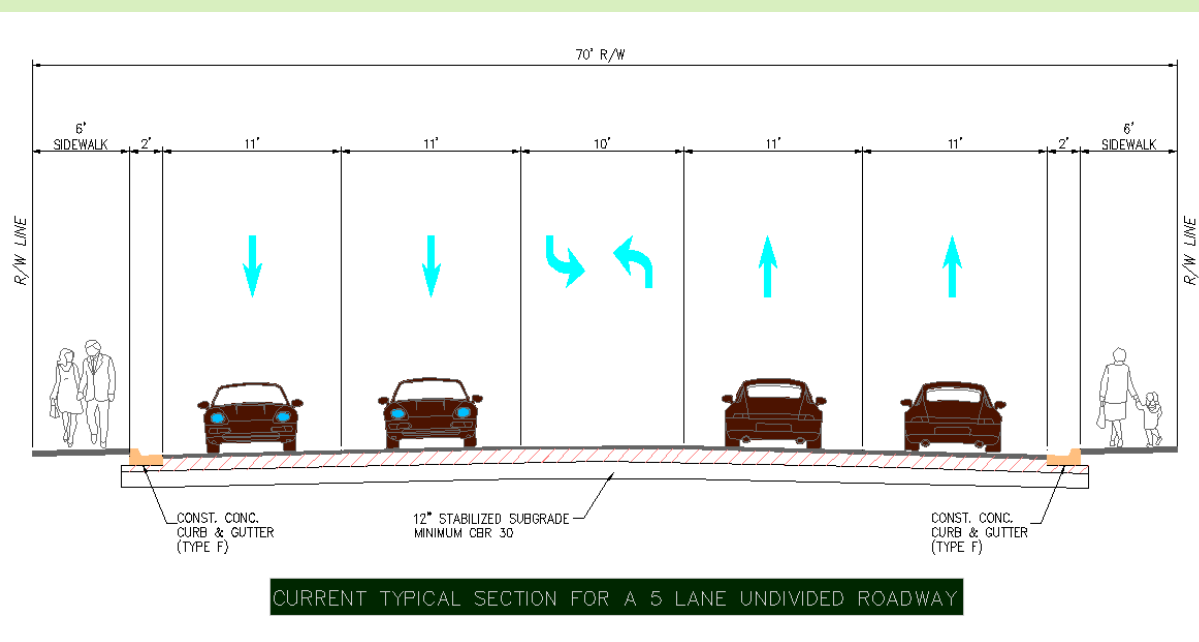
- RIGHT OF WAY RESTRICTIONS
- BALANCING VEHICULAR VOLUMES WITH OTHER MODES ON CERTAIN ROADS
- HIGH CAPITAL COST
- HIGH OPERATIONAL COST



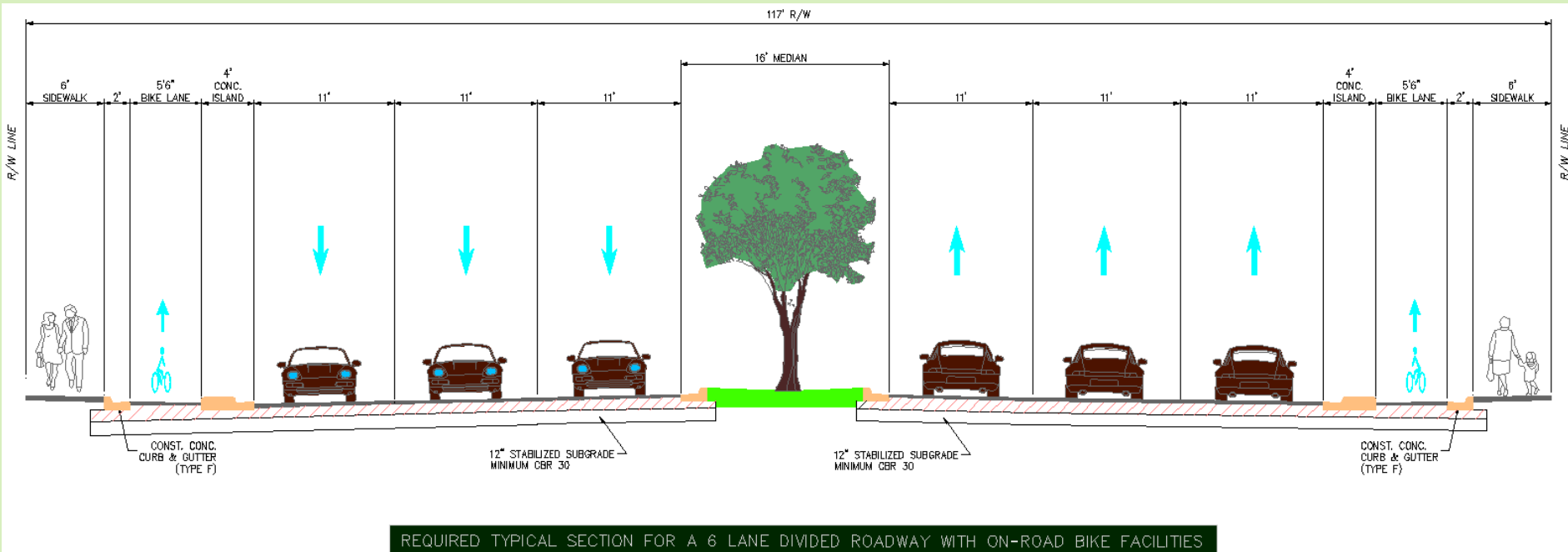
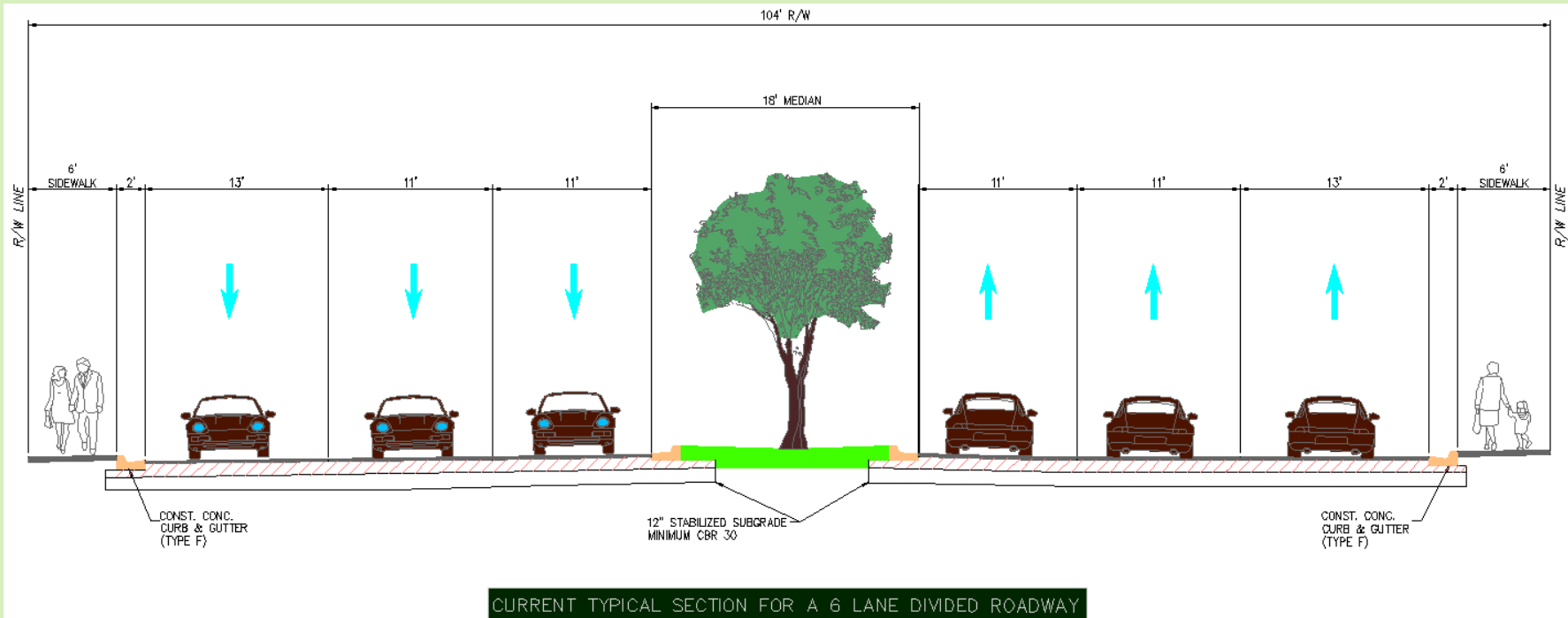
CURRENT TYPICAL SECTION FOR A 5 LANE UNDIVIDED ROADWAY

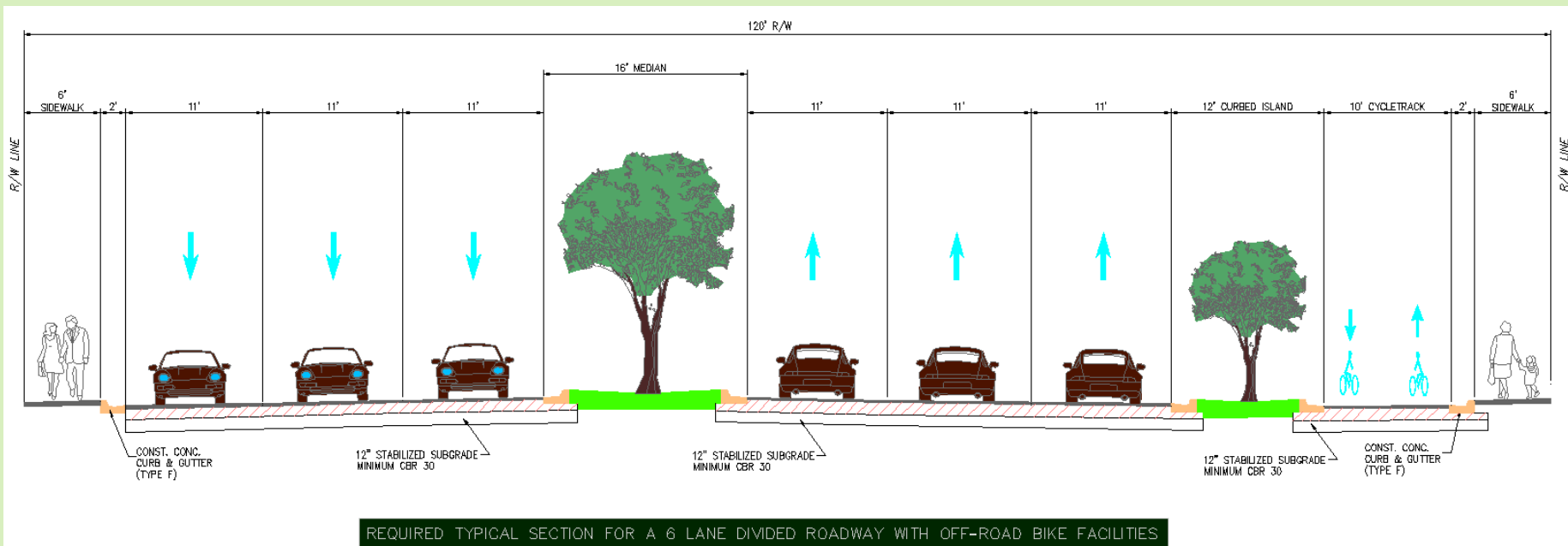
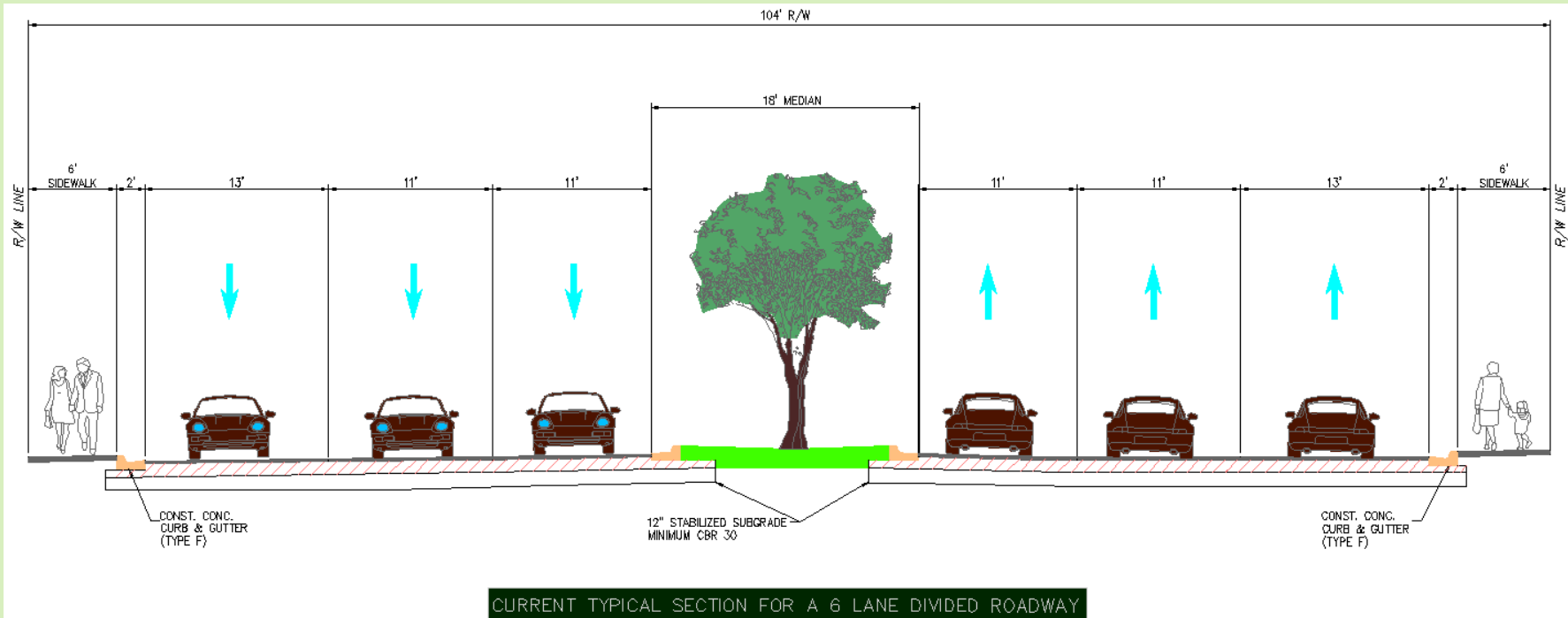


REQUIRED TYPICAL SECTION FOR 5 LANE UNDIVIDED ROADWAY WITH ON-ROAD BIKE FACILITIES







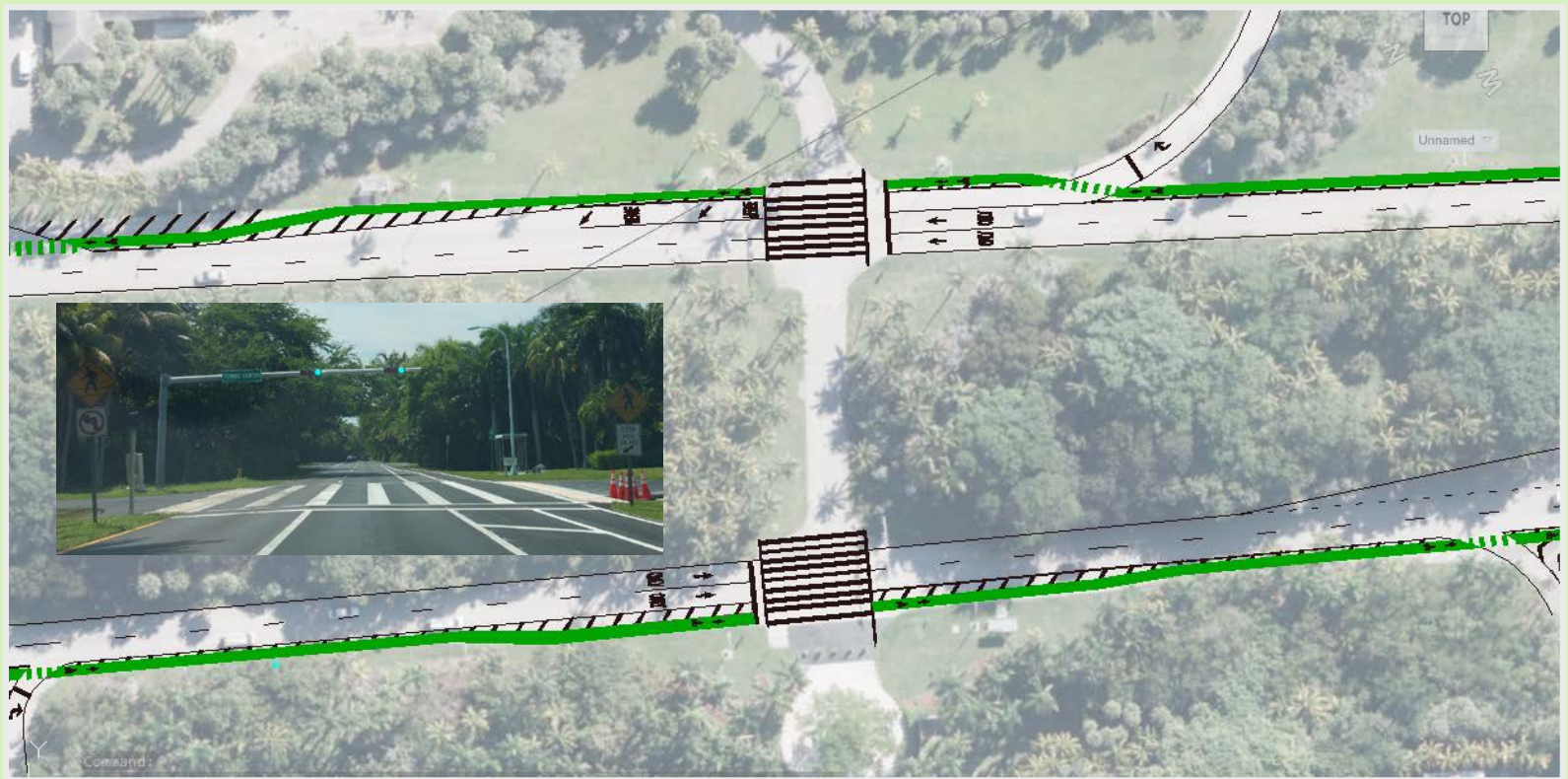


# WHAT IS COMING?

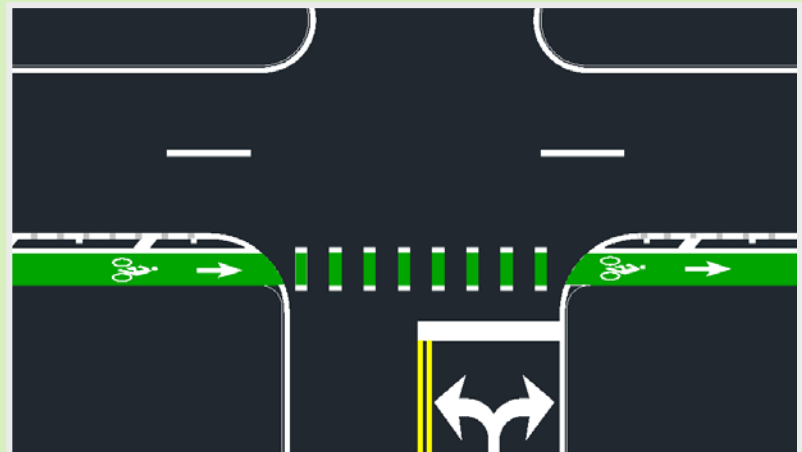
*TOTAL COST OF ALL FUTURE PROJECTS: OVER 170 MILLION DOLLARS*

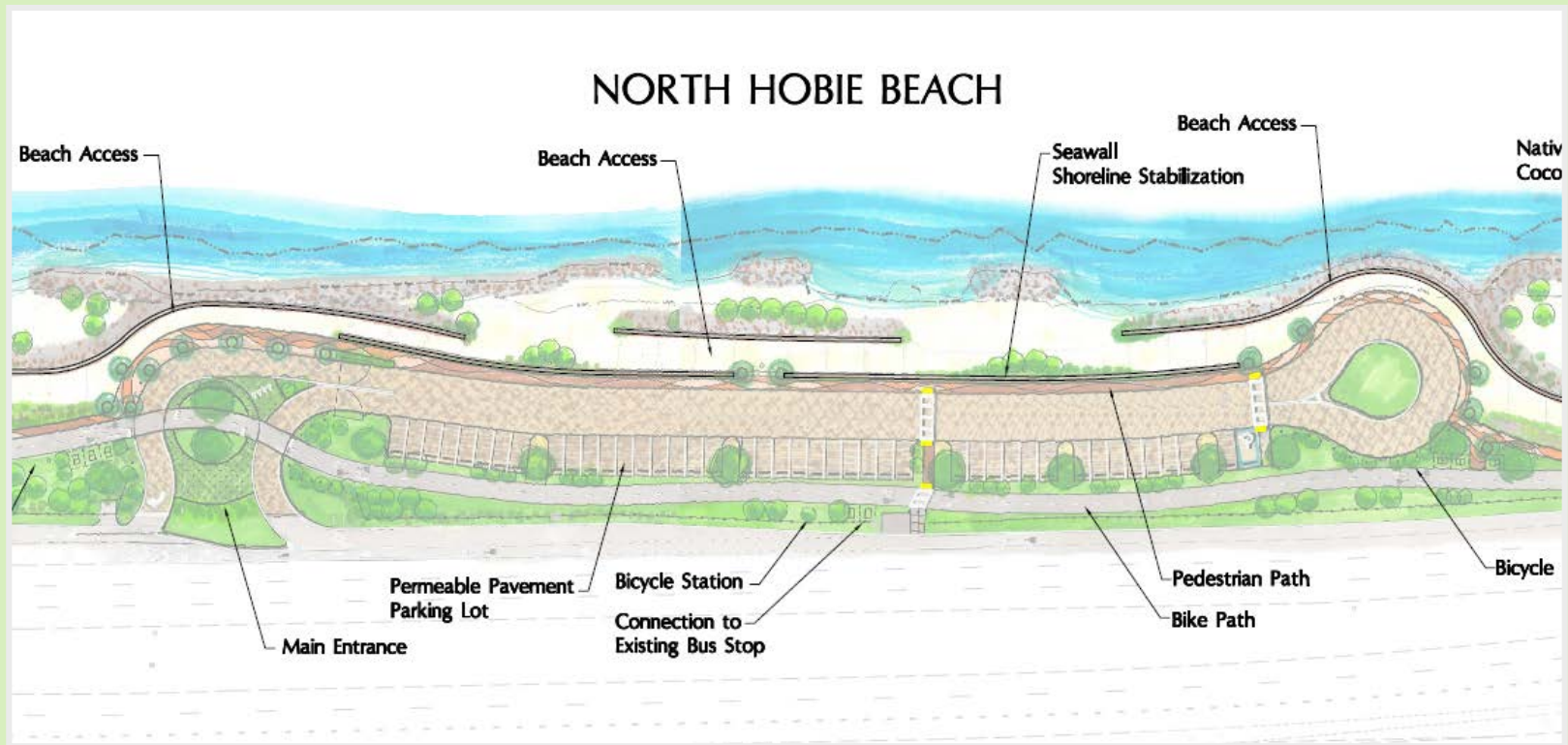
1. Crandon Blvd from Bear Cut Bridge to Calusa Circle  
SCOPE: Green Bicycle lanes separated by painted buffer
2. W. Dixie Highway from NE 164 Street to NE 173 Street  
SCOPE: Bike lanes, decorative lighting and landscaped median
3. SW 264 Street from US-1 to SW 137 Avenue  
SCOPE: Bicycle lanes, decorative lighting and raised median
4. SW 152 Street from SW 152 Avenue to SW 157 Avenue  
SCOPE: Shared use path, decorative lighting and landscaped median
5. NE 2 Avenue from NE 20 Street to NE 36 Street  
SCOPE: Bicycle lanes, on-street parking, decorative lighting and landscaping
6. NE 2 Avenue from NE 69 Street to NE 84 Street  
SCOPE: Bicycle lanes, on-street parking, decorative lighting and landscaping
7. NE 2 Avenue from NE 42 Street to NE 51 Street  
SCOPE: Bicycle lanes, on-street parking, decorative lighting and landscaping
8. NW 97 Avenue from NW 52 Street to NW 74 Street  
SCOPE: Bicycle lanes, raised median and decorative lighting
9. SW 268/SW 264 St Connector b/t SW 147 Avenue and SW 112 Avenue  
SCOPE: Bicycle lanes and roadway lighting
10. SW 216 Street from SW 127 Avenue to SW 112 Avenue  
SCOPE: Bicycle lanes, landscaped median, decorative lighting and on-street parking
11. SW 137 Avenue from HEFT to US-1  
SCOPE: Bicycle lanes and raised median
12. SW 137 Avenue from US-1 to SW 200 Street  
SCOPE: Bicycle lanes, bridge and culvert crossing
13. South Miami Avenue from 15 Road to 8 Street  
SCOPE: Bicycle and pedestrian facilities
14. NW 74 Street from NW 87 Avenue to SR 826  
SCOPE: Bicycle lanes and roadway lighting
15. Hobie Island Beach Renourishment  
SCOPE: Shared use path
16. NE 16 Ave from NE 135 St to NE 123 St  
SCOPE: Bicycle lanes and decorative lighting
17. SW 176 St from US-1 to SW 107 Ave  
SCOPE: Landscaped median, bicycle lanes and on-street parking
18. Caribbean Blvd from Turnpike to Coral Sea Rd  
SCOPE: Bicycle lanes, enhanced lighting, landscaping, bus pull out bays and intersection improvements
19. NW 58 Street from NW 97 Avenue to SR 826  
SCOPE: Bikeways and roadway lighting
20. Tamiami Canal Bridge Replacement  
SCOPE: Bridge replacement with provisions for bicycle and pedestrian facilities





## CRANDON BOULEVARD





## HOBIE ISLAND BEACH RENOURISHMENT

