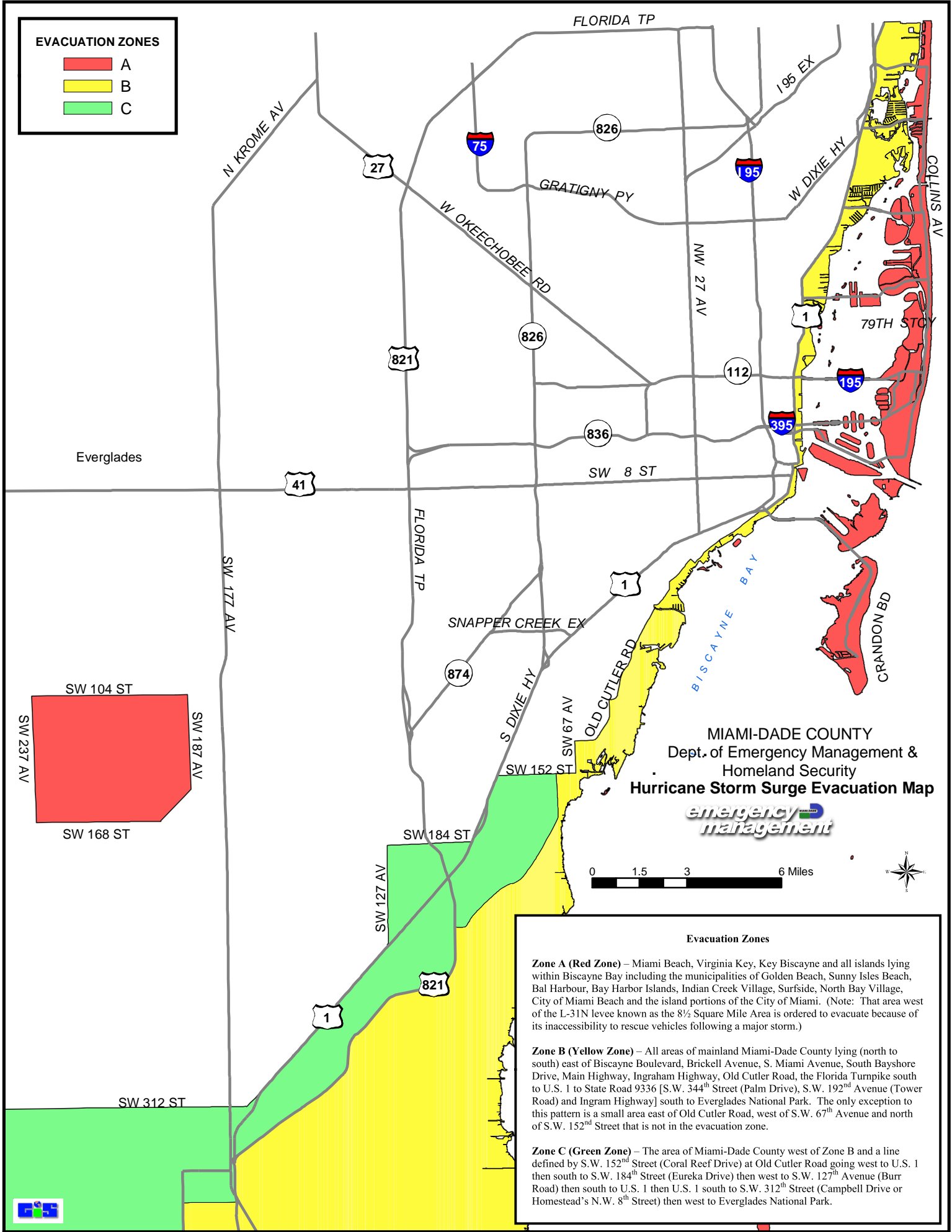


EVACUATION ZONES

- A
- B
- C



MIAMI-DADE COUNTY
 Dept. of Emergency Management &
 Homeland Security
Hurricane Storm Surge Evacuation Map
emergency management

Evacuation Zones

Zone A (Red Zone) – Miami Beach, Virginia Key, Key Biscayne and all islands lying within Biscayne Bay including the municipalities of Golden Beach, Sunny Isles Beach, Bal Harbour, Bay Harbor Islands, Indian Creek Village, Surfside, North Bay Village, City of Miami Beach and the island portions of the City of Miami. (Note: That area west of the L-31N levee known as the 8½ Square Mile Area is ordered to evacuate because of its inaccessibility to rescue vehicles following a major storm.)

Zone B (Yellow Zone) – All areas of mainland Miami-Dade County lying (north to south) east of Biscayne Boulevard, Brickell Avenue, S. Miami Avenue, South Bayshore Drive, Main Highway, Ingraham Highway, Old Cutler Road, the Florida Turnpike south to U.S. 1 to State Road 9336 [S.W. 344th Street (Palm Drive), S.W. 192nd Avenue (Tower Road) and Ingram Highway] south to Everglades National Park. The only exception to this pattern is a small area east of Old Cutler Road, west of S.W. 67th Avenue and north of S.W. 152nd Street that is not in the evacuation zone.

Zone C (Green Zone) – The area of Miami-Dade County west of Zone B and a line defined by S.W. 152nd Street (Coral Reef Drive) at Old Cutler Road going west to U.S. 1 then south to S.W. 184th Street (Eureka Drive) then west to S.W. 127th Avenue (Burr Road) then south to U.S. 1 then U.S. 1 south to S.W. 312th Street (Campbell Drive or Homestead's N.W. 8th Street) then west to Everglades National Park.

