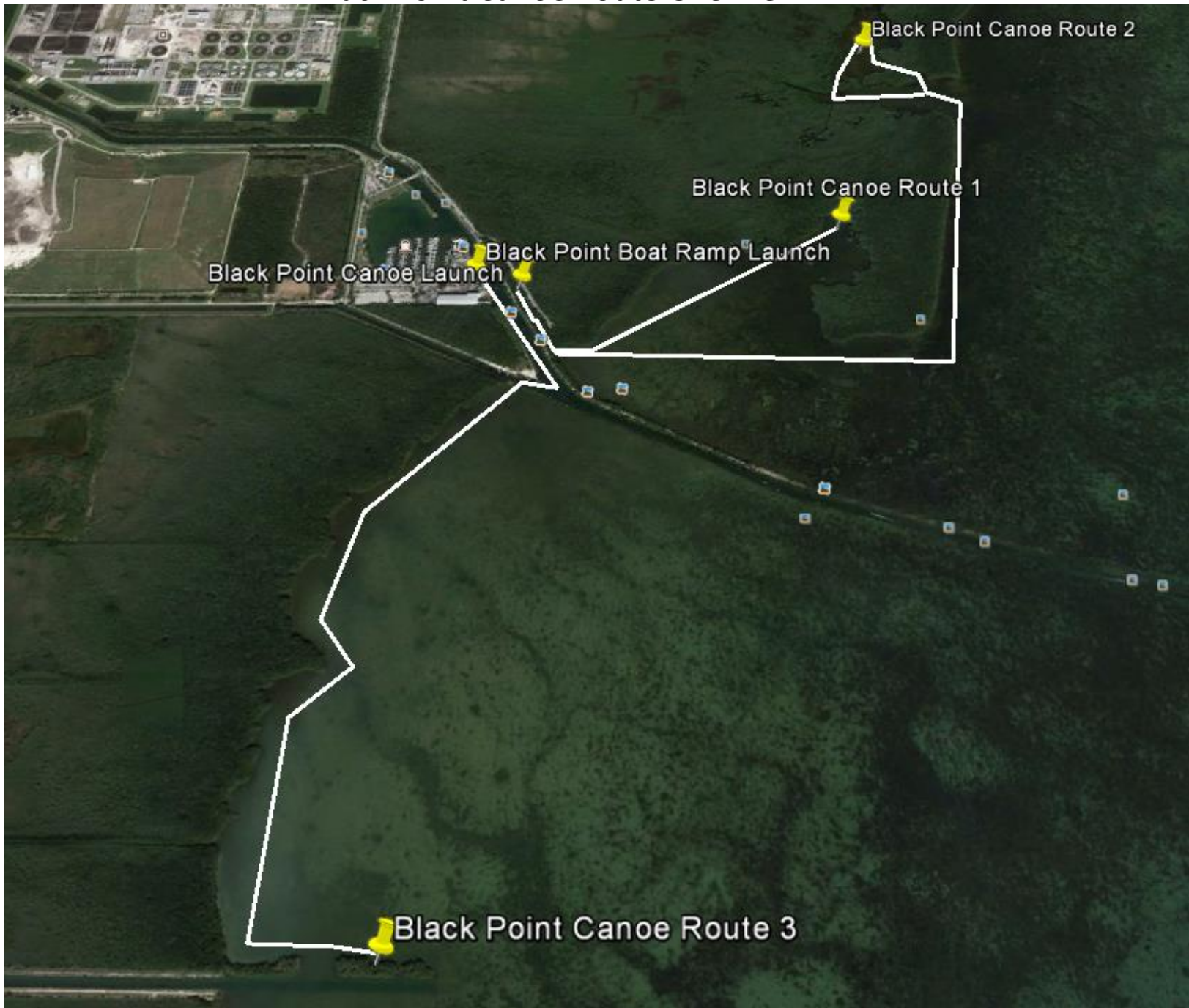


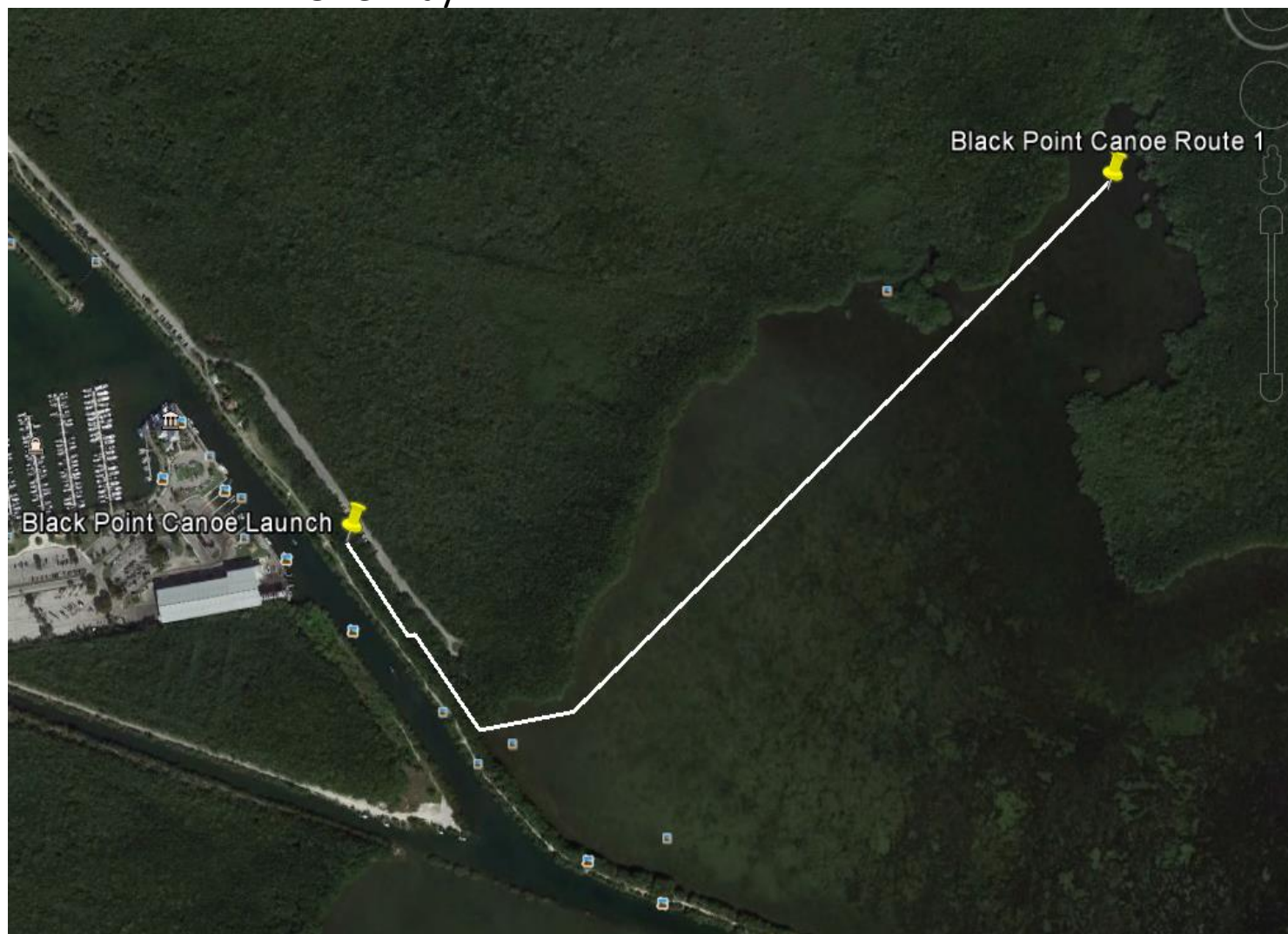
# Black Point Canoe Route Overview



# Black Point Canoe Route 1

0.8 miles long

One Way



Black Point Canoe Launch  
Latitude: 25°32'16.60"N  
Longitude: 80°19'34.03"W

Black Point Canoe Route 1  
Latitude: 25°32'24.80"N  
Longitude: 80°18'58.66"W

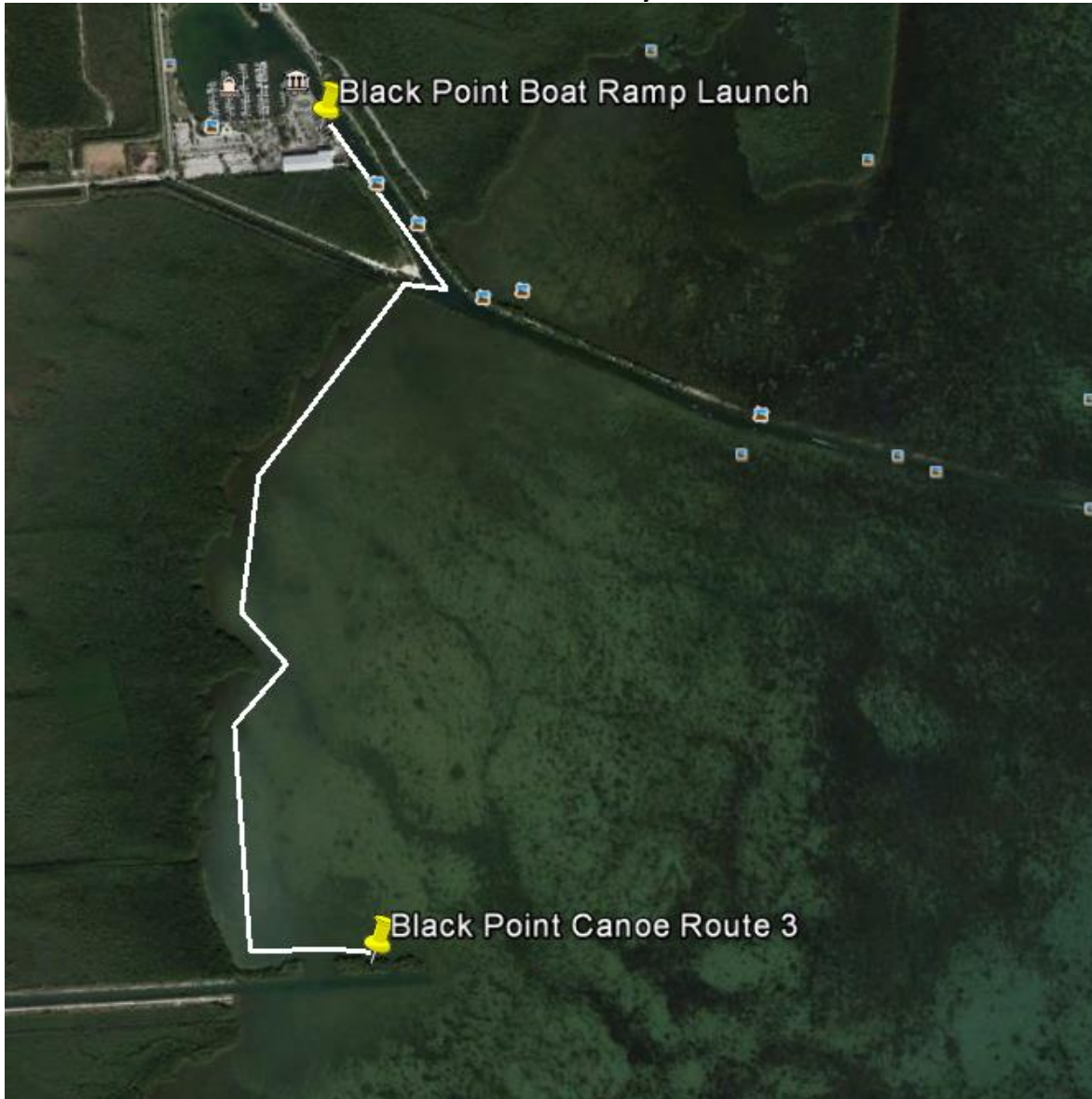
Black Point Canoe Route 2  
2.41 miles long  
One Way



Black Point Canoe Launch  
Latitude: 25°32'16.60"N  
Longitude: 80°19'34.03"W

Black Point Canoe Route 2  
Latitude: 25°32'52.04"N  
Longitude: 80°18'54.59"W

Black Point Canoe Route 3  
1.74 miles long  
One Way



Black Point Boat Ramp Launch  
Latitude: 25°32'17.95"N  
Longitude: 80°19'39.16"W

Black Point Canoe Route 3  
Latitude: 25°31'10.29"N  
Longitude: 80°19'39.80"W