



MIAMI-DADE PARKS, RECREATION & OPEN SPACES
AND THE PARKS FOUNDATION OF MIAMI-DADE

**PARKS & PUBLIC SPACES AS
CATALYSTS FOR GREENER,
HEALTHIER, MORE ECONOMICALLY
VIBRANT COMMUNITIES**

P R O G R A M

Friday, April 4, 2014

Great Park Summit

2014



Embrace better health.™

Presented by AvMed

Featuring Million Trees Miami: "We Speak for the Trees"



Great Park Summit

2014

SPONSORS AND PARTNERS

A special thanks to our sponsors and partners! Without their generous contributions and support the 2014 Great Park Summit and Mayors' Reception would not be possible.

OUR SPONSORS

EMERALD SPONSOR

AvMed

FOREST SPONSOR

IBM

SAGE SPONSOR

Fit2Go

JADE SPONSOR

Rep Services

PINE SPONSOR

AT&T

Holland & Knight

URS

Milian Swain &
Associates

PCL Construction

Kimley-Horn and
Associates

Health Foundation of
South Florida

Gilly Vending

FERN SPONSOR

Broyhill Inc.

OUR PARTNERS

Parks Foundation
of Miami-Dade

Fairchild Tropical
Botanical Garden

Health Foundation
of South Florida

Miami-Dade County
Health Department

University of Miami

Special thanks to the Conrad Miami for providing accommodations to Great Park Summit guest speakers.

Great Park Summit



"I recognize that parks are essential to the health, well-being, and happiness of every resident of our community."

– Mayor Carlos A. Gimenez

Great Park Summit



“Through parks and open spaces, we can create safer neighborhoods, promote public health, and help children to understand and embrace smarter growth. The Great Park Summit is the place where we shape our green legacy.”

Carlos A. Gimenez
Miami-Dade County Mayor



“Attractive green spaces create economically prosperous places. The Community Image Advisory Board is proud to incorporate the Million Trees Miami initiative into the Great Park Summit, facilitating a healthy dialogue on urban parks and forests to cultivate mutually beneficial strategies for our future.”

Dennis C. Moss
Miami-Dade County Commissioner, District 9
Chairman, Community Image Advisory Board



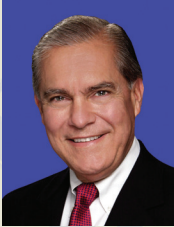
“Creating a beautiful public realm is a collaborative endeavor. I wish all of the leaders and visionaries here today much success as you work together to create greener, healthier, more vibrant communities.”

Rebeca Sosa
Chairwoman, Miami-Dade County Board of County Commissioners
Miami-Dade County Commissioner, District 6

Great Park
Summit

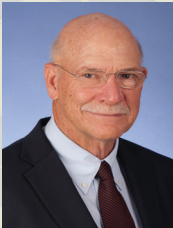
2 0 1 4

Great Park Summit



“As a friend and big fan of great parks, public spaces and cultural areas, thank you to all of today’s Great Park Summit participants for bringing your ideas and passion to the table for the benefit of our residents.”

Senator Javier D. Souto
Miami-Dade County Commissioner, District 10
Chairman, Cultural Affairs and Recreation Committee



“The Great Park Summit is an opportunity to develop partnerships that help our residents live better. Let’s explore opportunities to connect people and parks for life.”

Dick Anderson
President, Parks Foundation of Miami-Dade
Miami Dolphins Legend - 1972 “Perfect Season”



“Today, we celebrate our profound shared interest in the community’s health and its built environment, and our collaborative achievements in recent implementations of the Parks & Open Space System Master Plan. Together, we look forward to further connecting Miami-Dade County residents to the multiple benefits of parks and nature, one neighborhood at a time.”

Jack Kardys
Director
Miami-Dade County Parks, Recreation and Open Spaces Department

Great Park
Summit

2 0 1 4

Schedule

8:00 a.m. - 8:30 a.m.

Registration

Complimentary Continental Breakfast & Exhibitors

8:30 a.m. - 9:00 a.m.

Welcoming Remarks

Carl Lewis, Ph.D

Director, Fairchild Tropical Botanical Garden

Opening Remarks

The Honorable Carlos A. Gimenez, Mayor Miami-Dade County

The Honorable Rebeca Sosa, Chair, Miami-Dade County Board of County Commissioners

The Honorable Javier D. Souto, Commissioner and Chair, Cultural Affairs and Recreation Committee

The Honorable Dennis C. Moss, Commissioner and Chair, Community Image Advisory Board

Jack Kardys, Director, Miami-Dade County Parks, Recreation and Open Spaces Department

Master of Ceremonies

Calvin Hughes, Anchor, Local10 News

Award Presentation: William J. Matheson Award

Presented by: Calvin Hughes and the Honorable Carlos A. Gimenez

Morning Session

9:00 a.m. - 10:00 a.m.

Stewart Kennedy, The Miami Foundation

Topic: Public Space Challenge

Vanessa Garrison, Founder and Director, GirlTrek

Topic: Walking Revolution for Better Health

Award Presentation: William Lyman Philips Award and C.W. Chuck Pezoldt Award

Presented by: Calvin Hughes and Vanessa Garrison

Barbara Tulipane, President, NRPA

Topic: The Power of a Park

Award Presentation: A.D. Doug Barnes Award and Charles H. Crandon Award

Presented by: Calvin Hughes and Barbara Tulipane

10:00 a.m. - 10:10 a.m.

Morning Break

10:10 a.m. - 11:00 a.m.

Carol Coletta, Vice President, Community and National Initiatives,
James L. Knight Foundation – *Topic: Creative Placemaking*

Award Presentation: Community Image Advisory Board Awards
Presented by: Calvin Hughes and Commissioner Dennis C. Moss

Ann MacDonald, Director, New Orleans Department of Park and Parkways
Topic: Regenerating New Orleans’ Most Valued Assets Post Katrina

11:00 a.m. - 11:45 a.m.

Keynote Speaker: Michael DiBerardinis, Deputy Mayor, City of Philadelphia
Topic: Greenworks: Making Philadelphia More Sustainable

11:45 a.m. - 12:00 p.m.

Closing Remarks: Mickey Fearn, Professor,
College of Natural Resources, North Carolina State University

12:00 p.m. - 1:00 p.m.

Complimentary Lunch / Exhibitors / Fitness Demonstrations

Afternoon Session

1:00 p.m. - 2:30 p.m.

Discussion Groups (Placemaking / Health / Environment)

Placemaking	Health, Wellness & Fitness	Environment
Panel Discussion: *Mike Sobczak Matt Lambert (DPZ) *Moderator	Panel Discussion: *Dr. Sarah Messiah (UM) Dr. Stacy Frazier (FIU) Dr. Martha Pelaez (HFSF)	Panel Discussion: *Rick Johnson (MDX) Gloria Anita (CBSF) Amy Creekmur (TAS) David Cardenas (PROS)

Tree Pruning Sponsor: *Million Trees Miami*

Demonstration and Practical Experience: Henry Mayer, M.S. (UF) – *CEU credits available*

2:30 p.m.

Afternoon Activities

Tree Planting (*Matheson Hammock Park*); Trees generously provided by:
the Tropical Audubon Society and Toyota TogetherGreen

Bike Ride (*Old Cutler Road*)
Bikes and gear provided by Mack Cycle & Fitness

Presenters



Calvin Hughes, Anchor, Local10 News/WPLG

Emmy Award-winning newscaster Calvin Hughes co-anchors Local10's evening news broadcasts. Among his accolades, he was one of few television journalists allowed in Cuba to cover Pope Benedict XVI's historic visit in 2012. His famed trip was documented in an Emmy-nominated Local10 News Special. Miami New Times voted him "Miami's Best TV News Anchor" in 2011 for his reporting on the Haiti earthquake disaster.



Vanessa Garrison, Co-Founder & Director of Operations, GirlTrek

A passionate advocate of social justice issues, Vanessa Garrison is the Co-Founder & Director of Operations of GirlTrek, a national health movement focused on improving health outcomes and quality of life for black women and girls. Vanessa is the recipient of Teach for America's Social Innovation Award and was named among the top 1% of global social innovators by Echoing Green. In 2013 Vanessa was appointed to serve on the Washington D.C. Bicycle Advisory Council, where she advises the Washington D.C. Mayor and District agencies on bicycling issues.



Barbara Tulipane, President/CEO, NRPA

Barbara Tulipane is the President and Chief Executive Officer of the National Recreation and Park Association (NRPA), a national not-for-profit organization dedicated to advancing park, recreation and conservation efforts that enhance quality of life for all people. Responsible for leadership, development, advocacy, corporate relations and financial stewardship, Barbara has complete oversight for NRPA's operation and its 60-person staff.



Carol Coletta, VP, Knight Foundation, Community & National Initiatives

Carol Coletta is a nationally recognized expert on cities and the use of the arts to build communities. Coletta has written and spoken extensively on the future of cities, including how communities develop, attract and retain talent. Throughout her career, she has held numerous leadership roles, including President and CEO of CEO's For Cities, ArtPlace Director and Executive Director of the Mayors' Institute on City Design.

Presenters



Ann MacDonald, Director, New Orleans Department of Parks and Parkways

Ann MacDonald is the only person to serve as both Director of the Department of Parks and Parkways and the New Orleans Recreation Department. She has spent the past 13 years working to enhance the quality of life for the residents of New Orleans through community-based programming. As Director of Parks and Parkways, Ann is responsible for managing, maintaining, developing, and preserving approximately 2,000 acres of city-owned green space, which includes nearly 500,000 trees, neutral grounds, playgrounds, two 18-hole golf courses and historic sites.



Michael DiBerardinis, Deputy Mayor, Philadelphia

Michael DiBerardinis is Philadelphia's Deputy Mayor for Environmental and Community Resources and Commissioner for Parks and Recreation. He provides leadership for more than 10,000 acres of land, 150 recreation centers and playgrounds, 150 neighborhood and regional parks, 54 library branches, and thousands of programs and events throughout Philadelphia. As Commissioner of Parks and Recreation, he has raised more than \$34 million in grants and initiated the city's "Green 2015" plan, which seeks to add 500 acres of new publicly accessible green space to the city by 2015.



Mickey Fearn, Professor, North Carolina State University's School of Natural Resources/Former Deputy Director, National Park Service

During his 46-year career in public service, Mickey Fearn has worked to connect youth and diverse populations to national and urban parks. The former National Park Service's Deputy Director for Communications and Community Assistance, he led many inspiring initiatives throughout U.S. cities and parks and recreation departments. He has also served: as the Washington State Parks & Recreation Commissioner; in the office of the Governor of California; in the California Department of Parks & Recreation and the City of Oakland Mayor. Mickey is currently a Professor of Practice at North Carolina State University's School of Natural Resources.



MISSION STATEMENT

**WE CREATE OUTSTANDING
RECREATIONAL, NATURAL,
AND CULTURAL EXPERIENCES
TO ENRICH YOU AND
ENHANCE THE QUALITY
OF LIFE FOR OUR COMMUNITY
FOR THIS AND FUTURE GENERATIONS.**

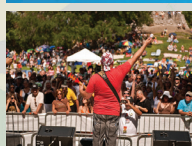
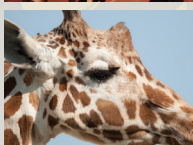
Miami-Dade Parks, Recreation and Open Spaces

Vision:
Connecting People and Parks for Life

Who We Are...

Nationally accredited, a three-time winner of the NRPA National Gold Medal Award, winner of the 2013 Florida Governor's Sustained Excellence Award and the 2009 Florida Governor's Sterling Award for excellence in management and operations, Miami-Dade County Parks is the third largest county park system in the United States. It is one of the most unique park and recreation systems in the world. Made up of more than just playgrounds and athletic fields, it also comprises out-of-school, sports-development, and summer-camp programs; programs for seniors and people with disabilities; educational nature centers and nature preserves; and Featuring seven heritage parks: Deering, Crandon, Matheson, Haulover, Greynolds, Fruit & Spice, Homestead Bayfront.

260 parks
15 miles of beaches
6 marinas
12 pools
5 dog parks
14 dog-friendly parks
42 Fit2Play camps
5 golf courses
1 mini-golf course
2 campgrounds
3 skate parks
7 nature centers
143 playgrounds
1 equestrian complex
Zoo Miami
241 medians maintained
16 miles of busway
257 miles of roadway
22 miles of public
transitways maintained
149,000 tree plantings
15 outdoor fitness areas
5,279 acres of natural
area, and more...



How We Help...

Parks Foundation of Miami-Dade



The mission of the Parks Foundation of Miami-Dade is to foster the recreational, educational, environmental and cultural life of Miami-Dade County community. We encourage and garner support for our County's park system through funding sources independent of government to meet the needs of the community. The Foundation is a 501(c) organization.

Goals and Priorities aligned with Miami-Dade Parks' Strategic Business Plan:

Our Goals

Support the Parks & Open Space System Master Plan vision and recreation Plan implementation through **advocacy** and **fundraising** for capital development

Expand challenged youth and senior by programs by offering scholarships for the disadvantaged and children with disabilities

Build capacity to provide financial stability to Miami-Dade Parks

Enhance the Foundation's visibility while achieving organization excellence

Parks Foundation Board of Directors

Dick Anderson
President

Raul A. Garcia
Vice President

Maira Diaz-Giusti
Treasurer

Jim DiBernardo
Secretary

Sarah N. Artecona

Karen Evans

Jack Kardys

Grant Miller

Tim Hardaway

Ivonne Fernandez



Making Children Healthier by Making Fitness and Nutrition Fun!

A Miami-Dade County Parks, Recreation & Open Spaces Department Program

With one-in-four Floridians classified as obese and therefore, at risk for heart disease, diabetes, arthritis, and depression, and 67.4% of Miami-Dade County adults classified as overweight or obese, now is the time to take action for youth prevention with the Miami-Dade Parks Fit2Play® After-School Program as a preventative remedy and solution to the problem.

Studied and proven by the University of Miami's Miller School of Medicine, *The U* touts Fit2Play® as being a "national model" for its effectiveness, and First Lady Michelle Obama recently lauded Miami-Dade Parks for this healthy after-school program, while celebrating the fourth anniversary of her *Let's Move!* campaign in Miami.

Fit2Play® is drawing national attention, garnering recent articles in the American Journal of Health Promotion and the Journal of Disability and Health,

because it has been proven to work. Here's how:

- It's a community- and park-based model accessible to all residents of all economic backgrounds, conveniently located throughout the entirety of Miami-Dade County.

- It is measured, outcome oriented and evidence based.

- It helps children achieve and maintain healthy weight.

- It improves cardiovascular health in kids, including lowering high blood pressure.

- It not only teaches, but helps children understand and practice effective exercise, nutrition and health-and-wellness knowledge.

- It teaches life-skills kids need to grow up to become healthy adults making healthy choices.

- It provides a supervised, safe

place for homework help and playful fun.

For more information visit www.miamidade.gov/parks



PARKS & OPEN SPACE SYSTEM MAP

2006



Plan
Development
First GPS



Zoo Miami's
"Amazon and
Beyond" Exhibit

2009

Mayor's Greenway
Workgroup

OSMP Incorporated
into CDMP

Sterling Award

2013 Governor's Sustained
Excellence Award



RECIPIENT

2010

South Florida Park
Coalition

2007

P.R.I.D.E.



2008

OSMP Adopted
by BCC

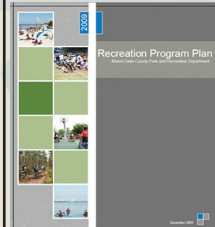


Trail Guidelines

Universal Wayfinding

Regional Partnerships

Recreation Plan



Red Fields to
Green Fields



Fit2Play/UM
Partnership



Kids Enjoying
Playground @
Princetonian Park



OPEN SPACE MASTER PLAN



North Pointe
Community Center
& Pool

2012

North Community
Center and pool

Realignment:
CIAB and Open
Spaces

2013

Focus on Parks!

Sterling Continued
Excellence Award

Bike305



6 NACo Awards

2011

Equity / Access
Analysis

Deering
Rehydration
Project

Gwen Cherry Park
Family Aquatic
Center

Pelican Harbor
Marina Dock
Master

Health
Department,
Health Foundation
of South Florida,
and TPL
Partnership for
Fitness Zones®



NRPA Cover: Mayor

Improved
Multipurpose Trail @
Snake Creek

Equestrian Center
@ Tropical Park

2014

Transit Partnership:
Brickell Promenade

Greenline Partnership:
Greenline/M-Path

Fit2Play Published
Results

First Lady Michelle
Obama Selects
MDC Parks to
Celebrate 4th Year
Anniversary of
"Let's Move!"



*Key highlights of Master Plan implementation

PARKS AND OPEN



SPACE SYSTEM



MASTER PLAN



Parks and Open Space System Master Plan

THE PUBLIC REALM

The minute you step outside your doorstep you enter a great park system! Composed of parks, public spaces, natural & cultural areas connected by greenways, trails and streets, designed as linear parks.

PRINCIPLES

SUSTAINABILITY - Every action and improvement of the Park System, including facilities, programs, operations and management, should contribute to the economic, social and environmental prosperity of the County.

SEAMLESSNESS - Every element of the County, including neighborhoods, parks natural areas, streets, civic centers and commercial areas, should be connected without regard to jurisdiction.

EQUITY - Every resident should be able to enjoy the same quality of public facilities and services regardless of income, age, race, ability or geographic location.

ACCESS - Every resident should be able to safely and comfortably walk, bicycle, drive and/or ride transit from their home to work, school, parks, shopping and community facilities.

BEAUTY - Every public space, including streets, parks, plazas and civic buildings should be designed to be as aesthetically pleasing as possible, and to complement the natural and cultural landscape.

MULTIPLE BENEFITS - Every single public action should generate multiple public benefits to maximize taxpayer dollars.

THE PARKS AND OPEN SPACE SYSTEM MASTER PLAN



great places have great spaces

SEATTLE

Parks are accessible to everyone regardless of age or ability



CHICAGO



VANCOUVER



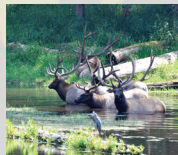
BOSTON



Public spaces are designed to engage residents



Natural and cultural areas are managed to balance access & resource protection



There are paths to connect every resident to places throughout the community



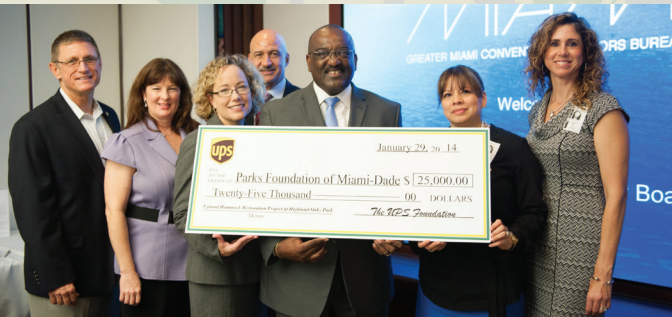
Streets are designed as linear parks



Community Image Advisory Board

The CIAB is a multi-jurisdictional collaboration dedicated to creating beautiful gateways, corridors and connections through maintenance and aesthetic investments. Working with members, including the Florida Department of Transportation, the Miami-Dade Expressway Authority, the Greater Miami Convention and Visitors Bureau, PortMiami, Miami-Dade Parks, Recreation and Open Spaces, and Public Works and Waste Management departments, non-profits, and municipalities, the CIAB's impact can be seen in efforts such as:

- Litter reduction education programs
- Tree plantings
- Roadway landscaping projects
- Master Plans for street trees and aesthetics
- Metrorail station improvements



Join our efforts!

CIAB Programs:

- Million Trees Miami
- Adopt-a-Road
- "Clean-Up Green-Up" Poster/Video Contest

www.miamidade.gov/image



image source:
MDX

2014 Community Image Advisory Board Awards

Beautification Leadership Award

“For an individual who has shown extraordinary initiative in transforming a roadway, gateway, terminal or station”

Inviting Gateway Award

“For an organization or jurisdiction that has created a beautiful gateway that reflects Miami-Dade’s world-class image”

Corridor Maintenance Showcase Award

“For an organization or jurisdiction that has beautified and maintained its public right-of-way to create a vibrant community connection.”

Million Trees Miami Award

“Crown Leadership Award: For an individual who has dedicated their career to increasing the tree canopy in Miami-Dade County”

Awardees will be announced by Commissioner Dennis C. Moss, Chairman of the CIAB

Million Trees Miami

Focused on the greening of Miami-Dade County, the CIAB is proud to incorporate the Million Trees Miami Initiative into this year's Great Park Summit. With the theme "We Speak for the Trees," the focus is non-profit and grassroots efforts aimed at increasing the tree canopy. Without these passionate groups we would not succeed greening Miami-Dade.



What Is Million Trees Miami?

Million Trees Miami Campaign is a community-wide effort to plant 1 million trees by 2020 in order to achieve a 30% tree canopy. Launched by the Miami-Dade Community Image Advisory Board, this campaign is rooted in the idea that a healthy and sustainable urban forest provides significant social, economic, and environmental benefits.

Join Us!

- Adopt-a-Tree
- Plan your community's tree planting
- Volunteer for other tree planting events
- Find out the best tree for your community



Why Plant a Tree?

1 Trees Help Community Life:

Trees can add up to 15% to the value of a home by making neighborhoods more attractive and urban areas quieter, cooler and more private.

2 Trees Clean Our Water and Air:

Miami-Dade's trees remove 5,425 tons of carbon from the air each year, improving air quality. Trees reduce storm water runoff by making the soil more absorbent.

3 Trees Save Energy and Money:

Trees provide essential shade and if placed properly, they can reduce home cooling costs by 15-30%.



<http://milliontrees.miamidade.gov>

Featuring: Million Trees Miami



We Speak for the Trees

The South Florida Park Coalition & Charter

The South Florida Parks Coalition is comprised of city, county, state and federal park directors and superintendents dedicated to sharing knowledge and identifying opportunities for collaboration to build a model park system that will promote a greener, healthier, and more livable South Florida community.

Coalition Members

Aventura
Bay Harbor Islands
Biscayne Park
Coral Gables
Cutler Bay
Doral
El Portal
Florida City
Golden Beach
Hialeah
Hialeah Gardens
Homestead
Indian Creek Village
Key Biscayne

Miami Beach
Miami Gardens
Miami Lakes
Miami Springs
North Bay Village
North Miami
North Miami Beach
Opa-locka
Palmetto Bay
Pinecrest
South Miami
Sunny Isles Beach
Surfside
Virginia Gardens

Biscayne National Park
Everglades National Park
State Parks
Miami-Dade County School Board
Miami-Dade County League of Cities
Barry University
Florida International University
University of Miami



2014 Park Heritage Awards

William J. Matheson Award **AvMed**

“For outstanding contribution by an individual, foundation, or business entity to the park, recreation, and conservation open space field through sponsorship, philanthropy, or development in Miami-Dade County”

William Lyman Phillips Award **The Honorable Shelley Stanczyk** **Mayor, Village of Palmetto Bay**

“For excellence in park, recreation, and conservation and design in Miami-Dade County”

C.W. “Chuck” Pezoldt Award **Sarah E. Messiah, Ph.D, MPH** **University of Miami Miller School of Medicine**

“For outstanding community service by an individual or organization to improve the quality and quantity of youth recreation opportunities in Miami-Dade County”

A.D. “Doug” Barnes Award **Dick Anderson** **President, Parks Foundation of Miami-Dade**

“For outstanding voluntary contribution by an individual or organization of time and effort to improve the quality and quantity of park, recreation and conservation open space opportunities in Miami-Dade County”

Charles H. Crandon Award **The Honorable Bob Graham** **Former U.S. Senator & Governor of Florida**

“For outstanding effort by an elected official to increase the park, recreation and conservation open space opportunities for the residents and visitors of Miami-Dade County”

South Florida Park Coalition - Service Award **Dan B. Kimball**

Retiring Superintendent, Everglades National Park

“For outstanding partnership & collaboration in building a seamless and sustainable park system that promotes a greener, healthier and more livable South Florida community”



Promoting health, wellness and fun through cycling as part of a unique collaborative effort engaging 15 Miami-Dade County area mayors. Partners support the connectivity of people and places through the countywide bike trails. Utilizing Bike305.com, residents and visitors can view countywide bikeways, learn about points of interest along the trails, including cycling-friendly events, and better understand the vision of our greenway, bike lane and trail development. The Bike305 collaboration was first forged by Miami-Dade County Mayor Carlos A. Gimenez in 2013.

Bike305 Month culminates with a hugely successful Bike to Work Day event that brings together the mayors on bicycles and dozens of commuters who trade use of their cars for bikes for one day, to show support for using alternative means of transportation in this traffic-congested county.

The 2013 Bike305 partners included: Key Biscayne, the City of Miami, Coral Gables, Pinecrest, Palmetto Bay, and Cutler Bay. The number of participating cities for 2014 grew from 6 to 15 with North Miami, Surfside, Miami Gardens, Miami Shores, Doral, Miami Beach, South Miami, Sunny Isles Beach, and Homestead joining in this effort.



t o



Together these cities and municipalities are committed to generating awareness and increasing usage of the miles of safe bicycling venues, from bike lanes to paved bike trails to greenways in South Florida. Municipalities are working together make this network of bike lanes, trails and greenways safer and more accessible.



A calendar with information on guided tours, cultural events, scheduled competitions and more, is available on the Bike305.com website! The Bike305 website will be the gateway to this year's community events throughout Bike305 season, and all year long.

www.bike305.com

Get moving with Parks!



Embrace better health.
www.embracebetterhealth.com

Focus on Parks

A new program to connect urban youth to nature and grow environmental stewards through photography was introduced in 2012, made possible with support from the National Park Service, Florida State Parks, HistoryMiami, the Parks Foundation, and generous sponsors.

For more information about this program contact your local Miami-Dade County Park Manager.



Use code
PARK to get
a free Meal

Fit2Go offers the
convenience
of daily delivery of
healthy meals!

Fit2Go, your healthy meal delivered!
(305) 718-3858 • fit2go@fit2gomeal.com

Certified TifEagle

Sold under license from the University of Georgia


South Florida Grassing, inc.
Established in 1964
Golf Courses - Athletic Fields - Site Work
Hobe Sound, Florida

Certified Paspalum • Bermuda • Zoysia

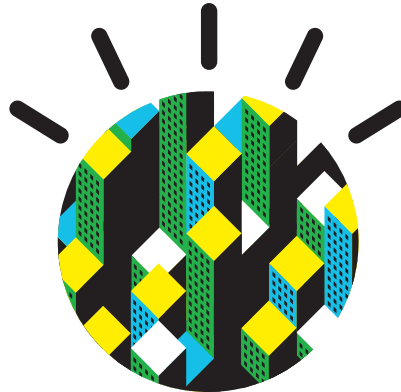
**SOD
SPRIGS
INSTALLATION**

info@southfloridagrassing.com

772-546-4191

800-483-4270

By 2050, 70% of the world's population will live in cities, putting a huge strain on the planet's infrastructure. Thankfully, intelligence is being infused into the way our cities work.
Let's Build A Smarter Planet, city by city.
ibm.com/smarterplanet



IBM, ibm.com, Let's Build A Smarter Planet, Smarter Planet and their logos are trademarks of IBM Corp. registered in many jurisdictions worldwide.
 See current list at ibm.com/trademark © International Business Machines Corp. 2014
 P29472



**What's
Out There**

Weekend[®]

MIAMI

April 12-13, 2014

Explore the city with FREE tours

Miami and South Florida's landscape legacy extends from its Spanish Colonial roots to the present, where strong Modernist, Beaux Arts, and Mediterranean design concepts from Europe and the Eastern U.S. are expressed in unique gardens, parks, plazas, estates, and streetscapes. Explore Miami's design legacy through FREE tours that include entertaining anecdotes and intriguing stories about design history, landscape architecture, and city shaping.



tclf.org/wotw
 Tours are free - Registration required



The Cultural Landscape Foundation (TCLF) provides people with the ability to see, understand, and value landscape architecture and its practitioners in the way many people have learned to do with buildings and architects. Through its Web site, lectures, outreach, and publishing, TCLF broadens the support and understanding for cultural landscapes nationwide.



MIAMI-DADE COUNTY

Carlos A. Gimenez

Mayor

BOARD OF COUNTY COMMISSIONERS

Rebeca Sosa *Chairwoman*

Lynda Bell *Vice Chair*

Barbara J. Jordan

District 1

Jean Monestime

District 2

Audrey M. Edmonson

District 3

Sally A. Heyman

District 4

Bruno A. Barreiro

District 5

Rebeca Sosa

District 6

Xavier L. Suarez

District 7

Lynda Bell

District 8

Dennis C. Moss

District 9

Sen. Javier D. Souto

District 10

Juan C. Zapata

District 11

Jose "Pepe" Diaz

District 12

Esteban Bovo, Jr.

District 13

Harvey Ruvin

Clerk of Courts

Lazaro Solis

Property Appraiser

Robert A. Cuevas, Jr.

County Attorney

Miami-Dade County provided equal access and equal opportunity in employment and services and does not discriminate on the basis of disability. "It is the policy of Miami-Dade County to comply with all of the requirements of the American Disabilities Act."

To request material in accessible format, information on the access on access for persons with disabilities, or sign language interpreter services (7 days in advance), call 305-755-7848.

Great Park Summit

2014



Embrace better health.sm

PRESENTED BY MIAMI-DADE PARKS, RECREATION
AND OPEN SPACES, IN PARTNERSHIP WITH
THE PARKS FOUNDATION OF MIAMI-DADE