

STANDARD MASONRY PIER

6'-0" MAXIMUM

ADDRESS: _____

PIER HEIGHT: _____ FT

NUMBER OF PIERS: _____

SELECT PIER SIZE:

- 12" x 12"
- 16" x 16"
- 24" x 24"

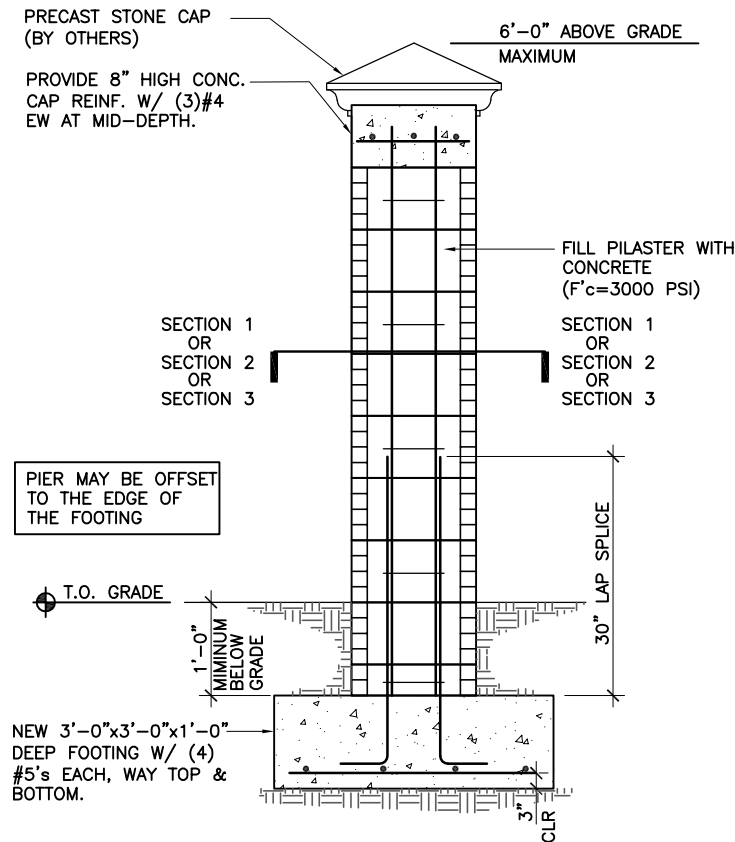
SELECT CONSTRUCTION DETAILS:

- SECTION 1:1
- SECTION 2:2
- SECTION 3:3
- SEE BELOW

SELECT FENCE TYPE BETWEEN PIERS:

- CHAIN LINK
- WOOD
- PICKET (METAL)
- NONE

CODE: FBC 2020, 7th EDITION



ELEVATION

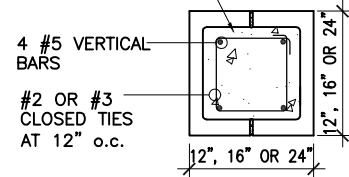
NOTES:

1. WIND DESIGN EXPOSURE "C" ONLY.
2. CONCRETE BLOCK UNITS TO BE TYPE II- NON-MOISTURE CONTROLLED, CONFORMING TO ASTM C90, WITH S MINIMUM NET AREA COMPRESSIVE STRENGTH OF 1900 PSI, (AVE OF THREE). PRISM STRENGTH OF CMU WALL F'M=1500 PSI.

IMPORTANT FOR USE AS A POOL BARRIER

THIS DETAIL MUST BE COMBINED WITH OTHER FENCE DETAIL BETWEEN THE PIERS TO COMPLY WITH POOL BARRIER REQUIREMENTS

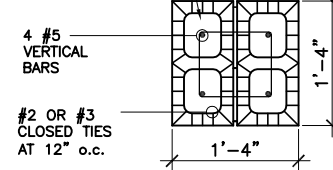
FILL W/ GROUT
(F'c=2500 PSI)



HOLLOW BLOCK UNITS.
 NOMINAL SIZES:
 12"x12", 16"x16" & 24"x24"

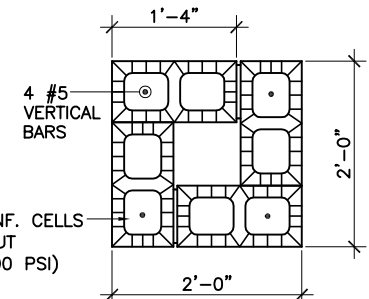
SECTION 1:1

FILL REINF. CELLS
 W/ GROUT
(F'c=2500 PSI)



SECTION 2:2

FILL REINF. CELLS
 W/ GROUT
(F'c=2500 PSI)



REGULAR BLOCKS UNIT.
 NOMINAL SIZE: 8"x16"

SECTION 3:3