

FINAL RECOMMENDATIONS

OCTOBER 2012 CYCLE EAR-BASED APPLICATIONS TO AMEND THE COMPREHENSIVE DEVELOPMENT MASTER PLAN

FOR MIAMI-DADE COUNTY, FLORIDA



September 2013

Carlos A. Gimenez
Mayor

MIAMI-DADE BOARD OF COUNTY COMMISSIONERS

Rebeca Sosa
Chairwoman

Lynda G. Bell
Vice Chairwoman

Barbara J. Jordan
District 1

Jean Monestime
District 2

Audrey M. Edmonson
District 3

Sally A. Heyman
District 4

Bruno A. Barreiro
District 5

Rebeca Sosa
District 6

Xavier L. Suarez
District 7

Lynda G. Bell
District 8

Dennis C. Moss
District 9

Sen. Javier D. Souto
District 10

Juan C. Zapata
District 11

Jose "Pepe" Diaz
District 12

Esteban Bovo, Jr.
District 13

R. A. Cuevas, Jr.
County Attorney

Harvey Ruvin
Clerk of Courts

MIAMI-DADE COUNTY PLANNING ADVISORY BOARD

Wayne Rinehart
Chair

William Riley
Vice-Chair

Carla Ascencio-Savola
Aida G. Bao-Garciga
Jose Bared
Peter DiPace
Horacio Carlos Huembes

Joseph James
Serafin Leal
Raymond Marin
Robert Meador
Reginald Clyne

Javier Munoz
Georgina Santiago
Jesus Vasquez
Paul Wilson

Ivan Rodriguez, School Board Representative, *Non-Voting Member*
Larry Ventura, Homestead Air Reserve Base Representative, *Non-Voting Member*

Jack Osterholt, Deputy Mayor/Director
Executive Secretary

Miami-Dade County provides equal access and equal opportunity in employment and services and does not discriminate on the basis of disability. "It is the policy of Miami-Dade County to comply with all of the requirements of the Americans with Disabilities Act".

INTRODUCTION

This report presents the final recommendations of the Department of Regulatory and Economic Resources (Department) addressing the eleven pending October 2012 Cycle Evaluation and Appraisal Report (EAR) based applications filed by the Department to amend the Comprehensive Development Master Plan (CDMP).

The eleven EAR-Based Applications are contained in a report titled *Staff Applications October 2012 Cycle Ear-Based Applications to amend the Comprehensive Development Master Plan* dated March 27 2013 with supplemental Errata dated April 11, 2013 and revised April 29, 2013; and are addressed in a report titled *Initial Recommendations October 2012 Cycle Ear-Based Applications to amend the Comprehensive Development Master Plan* dated April 2013.

The EAR-Based Applications were the subject of public hearings held by the Planning Advisory Board on April 15, 2013 and by the Miami-Dade Board of County Commissioners (Commission) held May 22, 2013. The Commission transmitted the application to the Florida Department of Economic Opportunity and other state and regional reviewing agencies by Resolution No. 405-13. By letter dated August 23, 2013, the Florida Department of Economic Opportunity issued its Objections, Recommendations and Comments (ORC) report addressing the transmitted EAR-Based Applications. This report incorporates changes to the pertinent EAR-Based Applications that are necessary to address the objections and comments in the ORC report along with other changes necessary to reflect more current available information.

The report presents the Department's Final Recommendation for each application on pages 1 through 3 and the detailed changes to impacted applications beginning on page 4.

Table 1
Schedule of Activities
October 2012-2013 CDMP Amendment Cycle
(EAR-Based Amendments)

Application Filing Period	October 1 to October 31, 2012
Notification Letter sent to the State Land Planning Agency (SLPA) Regarding Evaluation and Appraisal Based Amendments to the Comprehensive Plan	November 21, 2012
Staff Applications Report Published	March 27, 2013
Department of Regulatory and Economic Resources Initial Recommendations Report Published	April 2013
Country Club of Miami Community Council (5) Public Hearing addressing Land Use Plan map change to Parcel 296 identified in Part C of Application No. 1	April 11, 2013
Planning Advisory Board (PAB), acting as Local Planning Agency (LPA), Public Hearing to formulate Recommendations Regarding Adoption and Transmittal of Amendment Applications to the SLPA	April 15, 2013 County Commission Chamber 111 NW 1 st Street Miami, Florida 33128
Board of County Commissioners (Commission) Public Hearing and Action on Transmittal of Standard Amendment Applications to SLPA	May 22, 2013 County Commission Chamber 111 NW 1 st Street Miami, Florida 33128; and April 22, 2013, if needed.
Transmittal of Applications to SLPA and other state and regional reviewing agencies	June 2013 (Approximately 10 days after Commission transmittal hearing)
Deadline for Filing Supplementary Reports by the Public	Forty-five (45) days after Commission transmittal hearing
Receipt of Objections, Recommendations and Comments (ORC) Report from SLPA and Comments from other reviewing agencies	August 23, 2013 (Approximately 60 Days After Transmittal Hearing)
Board of County Commissioners Public Hearing and Final Action on Applications	October 2, 2013 County Commission Chamber 111 NW 1 st Street Miami, Florida 33128

**FINAL RECOMMENDATIONS
ON ADOPTED 2010 EVALUATION AND APPRAISAL REPORT
(EAR) BASED APPLICATIONS TO AMEND THE
COMPREHENSIVE DEVELOPMENT MASTER PLAN (CDMP)**

Presented below is a summary of the Final Recommendations of the Department on each EAR-Based amendment Application followed by the detailed changes proposed to each Application that the Department recommends to be adopted with change or with additional change. The changes detailed below are recommended by the Department subsequent to the Board of County Commissioners May 22, 2013 public hearing on the EAR-Based Applications.

APPLICATION NO. 1 (Land Use Element)

Requested Amendments: Numerous changes to the CDMP Preface and Future Land Use Element are proposed as presented in the “Staff Applications October 2012 Cycle EAR-Based Applications to Amend the Comprehensive Development Master Plan” report dated March 27, 2013. This Application is organized as follows:

- Part A: CDMP Preface;
- Part B: Future Land Use Element Goals, Objectives, Policies and Text; and
- Part C: Future Land Use Plan Map

Recommendation: “Adopt as Transmitted with Changes” (Changes to Parts B and C)

APPLICATION NO. 2 (Transportation Element)

Requested Amendments: Numerous changes to the Transportation Element, which includes the Traffic Circulation Subelement; Mass Transit Subelement; Aviation Subelement; Port of Miami River Subelement; and PortMiami Master Plan Subelement, are proposed as presented in the “Staff Applications October 2012 Cycle EAR-Based Amendments Applications to Amend the Comprehensive Development Master Plan” report dated March 27, 2013. This Application is organized as follows:

- Part A - Transportation Element;
- Part B - Traffic Circulation Subelement;
- Part C – Mass Transit Subelement;
- Part D – Aviation Subelement;
- Part E – Port of Miami River Subelement; and
- Part F – PortMiami Subelement

Recommendation: “Adopt as Transmitted with Changes” (All Parts)

APPLICATION NO. 3 (Housing Element)

Requested Amendments: Several changes to the Housing Element are proposed as presented in the “Staff Applications October 2012 Cycle EAR-Based Applications to Amend the Comprehensive Development Master Plan” report dated March 27, 2013.

Recommendation: “Adopt as Transmitted”

APPLICATION NO. 4 (Conservation, Aquifer Recharge and Drainage Element)

Requested Amendments: Numerous changes to the Conservation, Aquifer Recharge and Drainage Element are proposed as presented in the “Staff Applications October 2012 Cycle EAR-Based Applications to Amend the Comprehensive Development Master Plan” report dated March 27, 2013.

Recommendation: “Adopt as Transmitted with Changes”

APPLICATION NO. 5 (Water, Sewer, and Solid Waste Element)

Requested Amendments: Numerous changes to the Water, Sewer, and Solid Waste Element are proposed as presented in the “Staff Applications October 2012 Cycle EAR-Based Applications to Amend the Comprehensive Development Master Plan” report dated March 27, 2013.

Recommendation: “Adopt as Transmitted”

APPLICATION NO. 6 (Recreation and Open Space Element)

Requested Amendments: Numerous changes to the Recreation and Open Space Element are proposed as presented in the “Staff Applications October 2012 Cycle EAR-Based Applications to Amend the Comprehensive Development Master Plan” report dated March 27, 2013.

Recommendation: “Adopt as Transmitted”

APPLICATION NO. 7 (Coastal Management Element)

Requested Amendments: Numerous changes to the Coastal Management Element are proposed as presented in the “Staff Applications October 2012 Cycle EAR-Based Applications to Amend the Comprehensive Development Master Plan” report dated March 27, 2013.

Recommendation: “Adopt as Transmitted with Changes”

APPLICATION NO. 8 (Intergovernmental Coordination Element)

Requested Amendments: Numerous changes to the Intergovernmental Coordination Element are proposed as presented in the “Staff Applications October 2012 Cycle EAR-Based Applications to Amend the Comprehensive Development Master Plan” report dated March 27, 2013.

Recommendation: “Adopt as Transmitted with Changes”

APPLICATION NO. 9 (Capital Improvements Element)

Requested Amendments: Numerous changes to the Capital Improvements Element are proposed as presented in the “Staff Applications October 2012 Cycle EAR-Based Applications to Amend the Comprehensive Development Master Plan” report dated March 27, 2013.

Recommendation: “Adopt as Transmitted with Changes”

APPLICATION NO. 10 (Educational Element)

Requested Amendments: Numerous changes to the Educational Element are proposed as presented in the “Staff Applications October 2012 Cycle EAR-Based Applications to Amend the Comprehensive Development Master Plan” report dated March 27, 2013.

Recommendation: “Adopt as Transmitted”

APPLICATION NO. 11 (Economic Element)

Requested Amendments: Several changes to the Economic Element are proposed as presented in the “Staff Applications October 2012 Cycle EAR-Based Applications to Amend the Comprehensive Development Master Plan” report dated March 27, 2013.

Recommendation: “Adopt as Transmitted”

APPLICATION NO. 1

The information presented below identifies the changes proposed to EAR-Based Application No. 1 addressing the Land Use Element subsequent to the May 22, 2013 Board of County Commissioners (Board) public hearing on the EAR-Based Applications. The paragraph reference and page numbers provided below for each recommended changes cross references to the corresponding CDMP provision as contained the *Staff Applications, October 2012 Cycle EAR-Based Applications to Amend the Comprehensive Development Master Plan* report dated March 27, 2013 that was transmitted by Board to the Florida Department of Economic Opportunity.

Part B: Future Land Use Element Goals, Objectives, Policies and Text

Page 4; paragraph reference number 29, Policy LU-2B. Revise as follows:

LU-2B. Priority in the provision of services and facilities and the allocation of financial resources for services and facilities in Miami-Dade County shall be given first to serve the area within the Urban Infill Area and Transportation Concurrency Exception Areas, within the Urban Development Boundary (UDB) of the Land Use Plan (LUP) map, particularly Urban Centers and mixed use transit oriented corridors. Second priority shall be given to serve the area within the Urban Infill Area and the Urban Development Boundary. And third priority shall support the staged development of the Urban Expansion Area (UEA). Urban services and facilities which support or encourage urban development in Agriculture and Open Land areas shall be avoided, except for those improvements necessary to protect public health and safety and which service the localized needs of these non-urban areas. Areas designated Environmental Protection shall be particularly avoided.

Page 16, paragraph reference number 44, Policy LU-3J. Revise as follows:

LU-3J. Miami-Dade County shall continue to actively participate in the Southeastern Florida Regional Climate Change Compact and collaborate to increase regional climate change resiliency by sharing technical expertise, assessing regional vulnerabilities, advancing agreed upon mitigation and adaptation strategies and developing joint state and federal legislation policies and programs.

Page 22, paragraph reference number 66, Policy LU-6L. Revise as follows:

LU-6L. Through the Office of Historic and Archaeological Resources Preservation in consultation with the Department of Planning and Zoning Regulatory and Economic Resources, Miami-Dade County shall formulate procedures for establishing Thematic Resource Districts (TRDs) and/or Historic Districts. These overlay districts shall contain architectural and landscape design guidelines, and may authorize approval of additional compatible uses, consistent with and which promote the purposes of the particular district.

Page 5; Change No. 79, Policy LU-8H. Revise as follows:

LU-8H. Applications requesting expansion of the UDB shall be in accordance with the foregoing Policies LU-8F and LU-8G, and must meet the following criteria to be considered for approval:

- a) Residential development proposals shall provide for the non-residential needs of the future residents of such proposed developments including but not limited to places of employment, shopping, schools, recreational and other public facilities, and shall demonstrate that such needs are addressed;
- b) Residential development shall be at an average minimum density of ten (10) dwelling units per gross acre;
- c) Residential development must participate in the Purchase of Development Rights, Transfer of Development Rights (TDR) or other County established program(s) geared to protecting agricultural lands and/or environmentally sensitive lands;
- d) Non-residential development, excluding public facilities, shall be developed at a minimum intensity of 0.25 FAR; and
- e) The proposed development shall be planned to provide adequate buffering to adjacent agricultural lands and shall incorporate and promote bicycle and pedestrian accessibility throughout the development.
- f) The proposed development must be demonstrated not to discourage or inhibit infill and redevelopment efforts within the UDB;
- g) The proposed development will not leave intervening parcels of property between the proposed development and any portion of the UDB; and
- h) It must be demonstrated that the proposed development will have a ~~neutral or~~ positive net fiscal impact to Miami-Dade County.

Page 33, Objective LU-12. Revise as follows:

LU-12. Miami-Dade County shall take specific measures to promote infill development that are located in the Urban Infill Area (UIA) as defined in Policy TC-1B or in an built-up area with urban services that is situated in a Community Development Block Grant (CDBG)-eligible area, a Targeted Urban Area identified in the Urban Economic Revitalization Plan for Targeted Urban Areas, an Enterprise Zone established pursuant to state law ~~or in the designated Empowerment Zone established pursuant to federal law.~~

Page 33, paragraph reference number 98, Policy LU-12A. Revise as follows:

LU-12A. The Department of ~~Planning and Zoning~~ Regulatory and Economic Resources will utilize its Geographic Information System (GIS) Land Use File to identify vacant ~~or underutilized sites~~ sites, which might be suitable for infill housing. An infrastructure assessment will also be carried out and the results forthcoming from this process will be regularly reported annually by the Department ~~and disseminated to the building and development industry.~~

Pages 59 and 60; paragraph reference number 123. Revise as follows:

The following areas are hereby designated to be Chapter 380 regional activity centers and, subject to approval by the South Florida Regional Planning Council, regional development districts (a geographic area specifically designated as highly suitable for increased threshold intensity), for the purpose of increasing DRI review thresholds: 1. Dadeland, as depicted on Figure ~~3-2~~; and 2. N.W. 107th Avenue and N.W. 12th Street, as depicted on Figure ~~3-4~~ 4-3.

Page 80, second paragraph. Insert footnote that was inadvertently omitted as outlined below:

Open Land Subarea 4 (East Everglades Residential Areas). This subarea is bounded on the north, west and southwest by Everglades National Park, on the east by Levee 31N, and on the south by SW 168 Street. Uses which may be considered for approval in this area are agriculture production and raising of livestock¹ and rural residences at a density of 1 dwelling unit per 40 acres, or 1 dwelling unit per 20 acres if ancillary to an established agricultural operation, or 1 dwelling unit per 5 acres, after such time as drainage facilities become available to protect this area from a one-in-ten-year flood event in keeping with the adopted East Everglades zoning overlay regulation (Section 33B, Code of Miami-Dade County) and compatible and necessary utility facilities. Uses that could compromise groundwater quality shall not occur in this area.

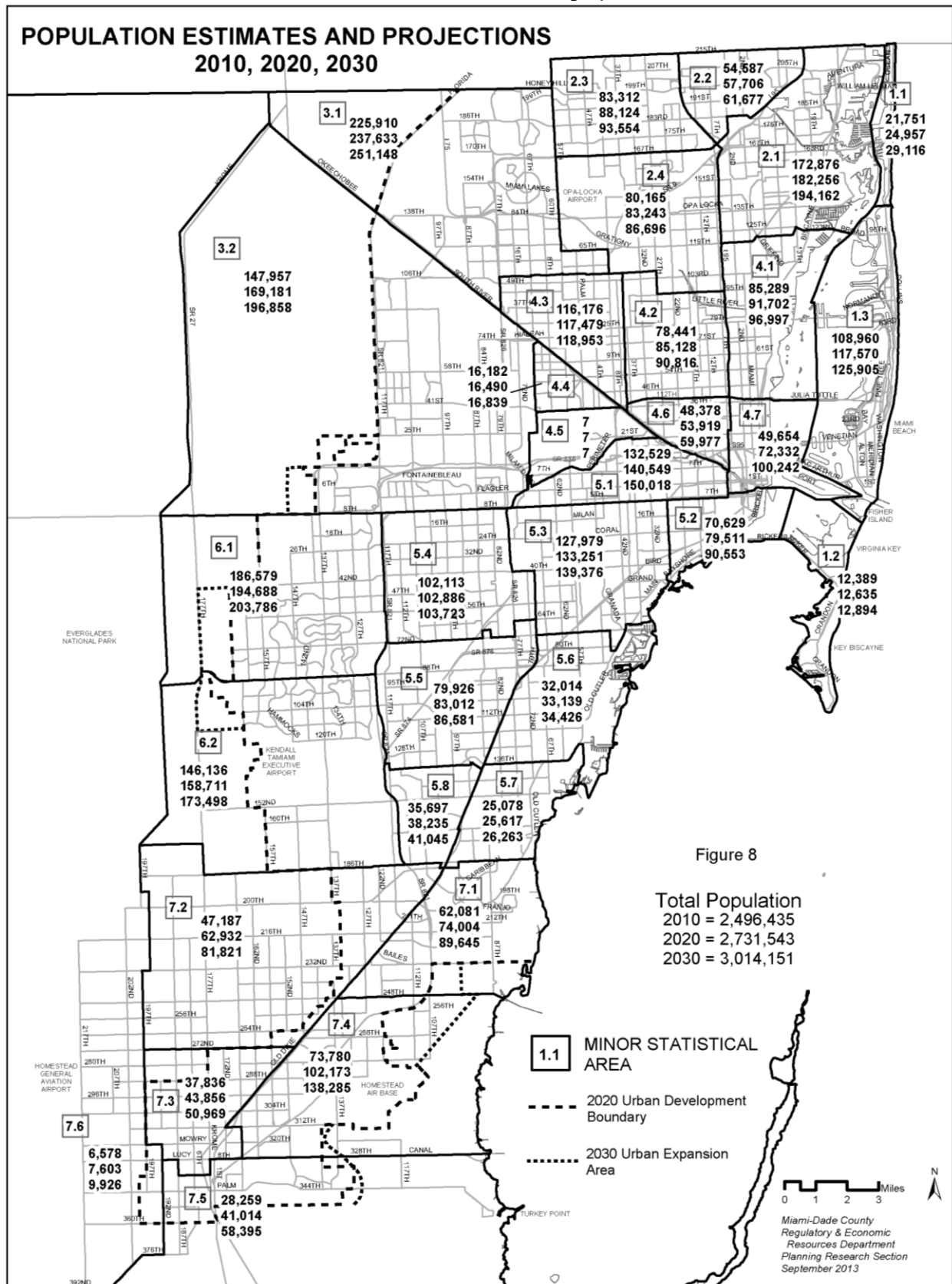
Page 81, fourth paragraph. Revise as follows:

Environmental Protection Subarea A (State Water Conservation Area). This subarea contains the land and water areas within the authorized boundaries of Water Conservation Area No. 3 of the South Florida Water Management District (SFWMD)...

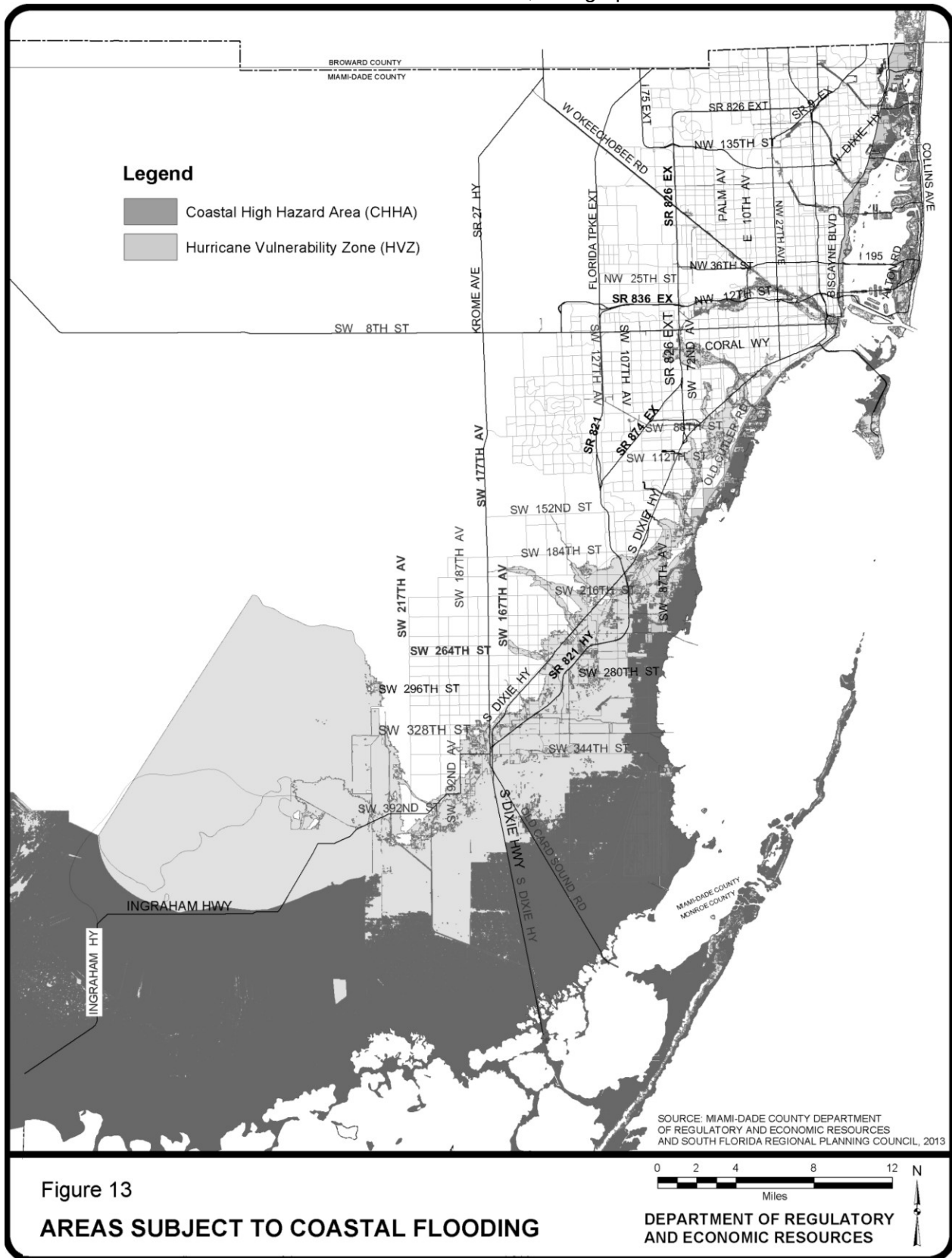
Land uses and activities, which may occur in the Big Cypress National Preserve, are outlined in management plans prepared and adopted by the National Park Service. In addition, any development, which might be contemplated for non-federal lands in the Big Cypress area, is also limited by this Plan and by provisions of the Miami-Dade County Code to uses that are consistent with Florida Rules governing the Big Cypress Areas of Critical State Concern (Chapter ~~27-F-3~~ 28-25, Part III, F.A.C.). Land uses and activities in Water Conservation Area 3 are governed by the SFWMD. Miami-Dade County supports the implementation of land use and management policies and programs established by the SFWMD.

¹ Miami-Dade County shall formulate and adopt amendments to Miami-Dade County Code Section 33B Areas of Critical Environmental Concern, Article II. - East Everglades, and adopt land development regulations applicable to land designated Open Land Subarea 4 (East Everglades Residential Areas) to specifically address the type of agriculture production uses and the limited raising of livestock uses that may be allowed; that considers water quality and that there is no flood protection provided in this Subarea.

REPLACE EXISTING FIGURE 8 WITH NEW FIGURE 8; Paragraph Reference No. 156



REPLACE EXISTING FIGURE 13 WITH NEW FIGURE 13; Paragraph Reference No. 173



Principal Reasons for Recommended Changes:

The paragraph reference and page numbers provided below for each recommended changes cross references to the corresponding CDMP provision as contained the *Staff Applications, October 2012 Cycle EAR-Based Applications to Amend the Comprehensive Development Master Plan* report dated March 27, 2013 that was transmitted by Board to the Florida Department of Economic Opportunity.

1. The changes to Policy LU-2B (page 9, paragraph reference number 29) is to maintain consistency of this policy with other CDMP policies that were revised as a result of an objection raised in the Objections, Recommendations and Comments (ORC) report issued by the Department of Economic Opportunity (DEO) on August 23, 2013. The ORC report included objection number three related to consistency between elements and internal consistency in the prioritization of capital improvements by geographic area among Policies CIE-3D, CIE-5A and TC-4C. In response, RER has revised policy LU-2B; deleted the proposed new Policy CIE-3D; revised Policy CIE-5A; and revised policy TC-4C. The changes to policy LU-2B are outlined above; changes to the CIE policies are located in Application 9 for the Capital Improvements Element; and changes to Policy TC-4C can be found in Application 2 for the Transportation Element.
2. The change to Policy LU-3J, paragraph reference number 44, is to correct name of the Southeast Florida Regional Climate Change Compact
3. The changes to Policy LU-6L, paragraph reference number 66, are to update the Department name.
4. The change to Policy LU-8H, paragraph reference No. 79, is a minor revision to the proposed policy addressing fiscal impacts.
5. The change to Objective LU-12 is to delete an obsolete program reference
6. The change to Policy LU-12A, paragraph reference number 98, is to correct scrivener's error.
7. The changes to paragraph reference number 123 are to update a map references in text.
8. The change herein that is associated with Open Land Subarea 4 (East Everglades Residential Areas) text, second paragraph on page 80, is to show the footnote that was inadvertently omitted from the original CDMP text.
9. The change to the Environmental Protection Subarea A (State Water Conservation Area) text, fourth paragraph on page 81, is update the F.A.C. reference.
10. The change to the Land Use Element Figure 8, paragraph reference number 156, is to update the population projection based on best available data pursuant with the recommendation on the County's population projections of the Department of Economic Opportunity in its Objections Recommendations and Comments report dated August 23, 2013.
11. The change to the Land Use Element Figure 13, Paragraph Reference No. 173, updates the figure as recommended by the Department of Economic Opportunity in its Objections Recommendations and Comments report dated August 23, 2013.

Part C: Future Land Use Plan Map

Presented below are staff's proposed changes to the Land Use Plan map amendment proposals in Part C of Application No. 1 that forms, in part, the basis for staff's Final Recommendation on the Application.

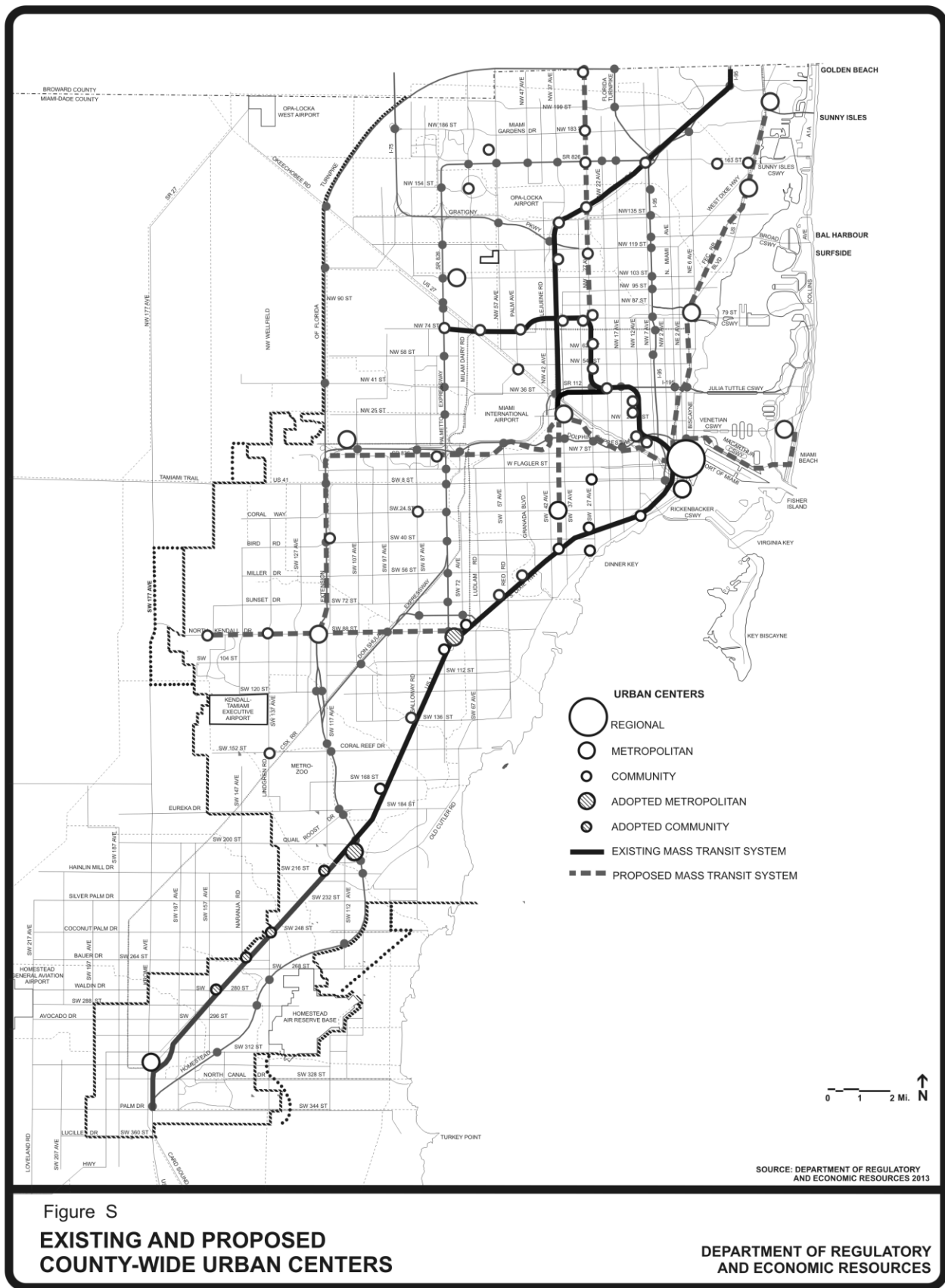
- Staff recommends withdrawal of the community urban center proposed to be designated on the Land Use Plan Map for the area generally located at the Palmetto Expressway/SR-826 and Bird Road/SW 40 Street.
- Staff recommends the withdrawal of Parcels 155 and 156 and refinement to the description and/or boundaries of several of the proposed Parcel changes as outlined in the table below and on the following aerial maps, including Parcel 294. Parcel 294 is proposed for exclusion from within the UEA.

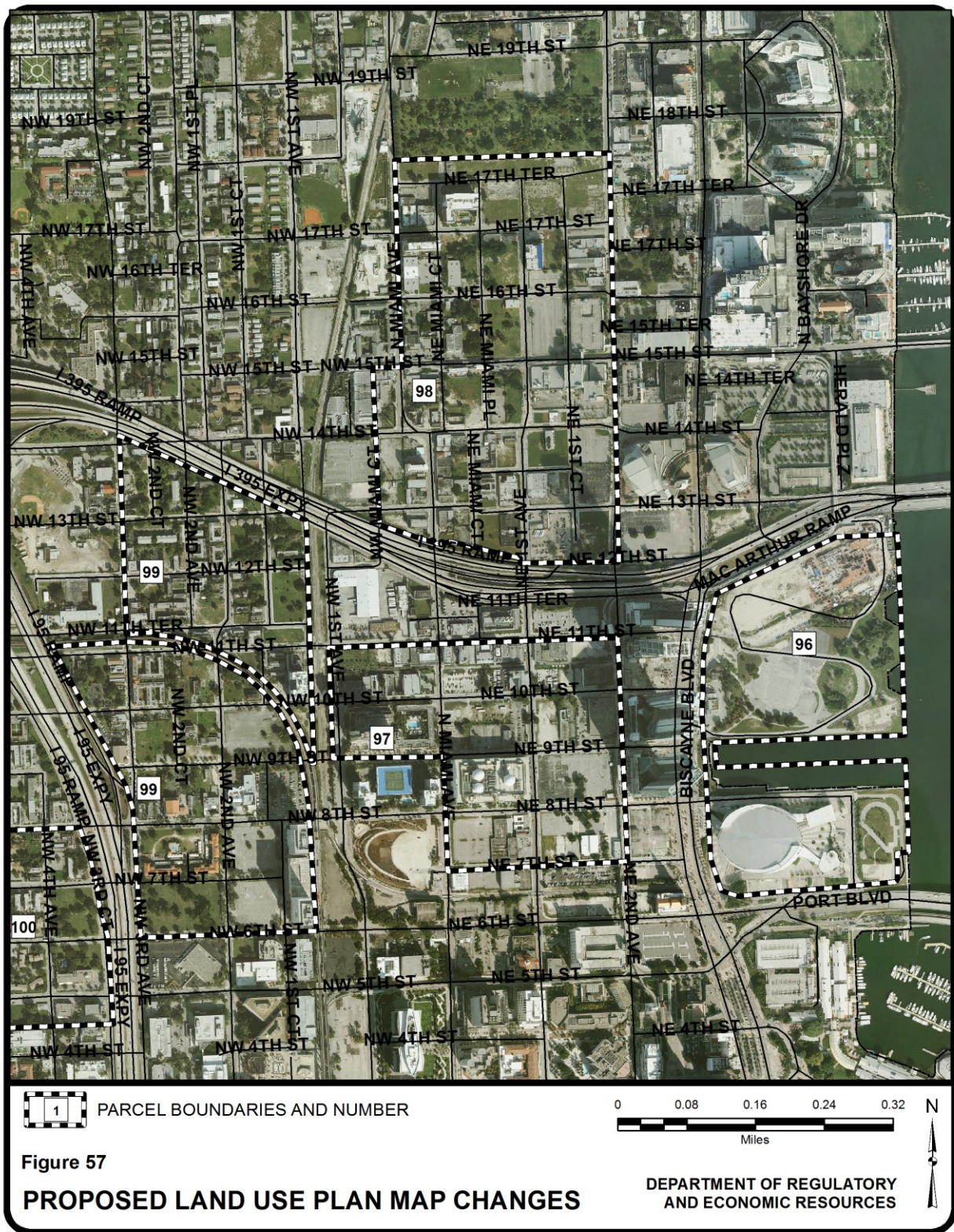
Table 1
LIST OF PROPOSED LAND USE PLAN MAP PARCELS WITH RECOMMENDED CHANGES
OCTOBER 2012 EAR-BASED APPLICATIONS TO AMEND THE
COMPREHENSIVE DEVELOPMENT MASTER PLAN

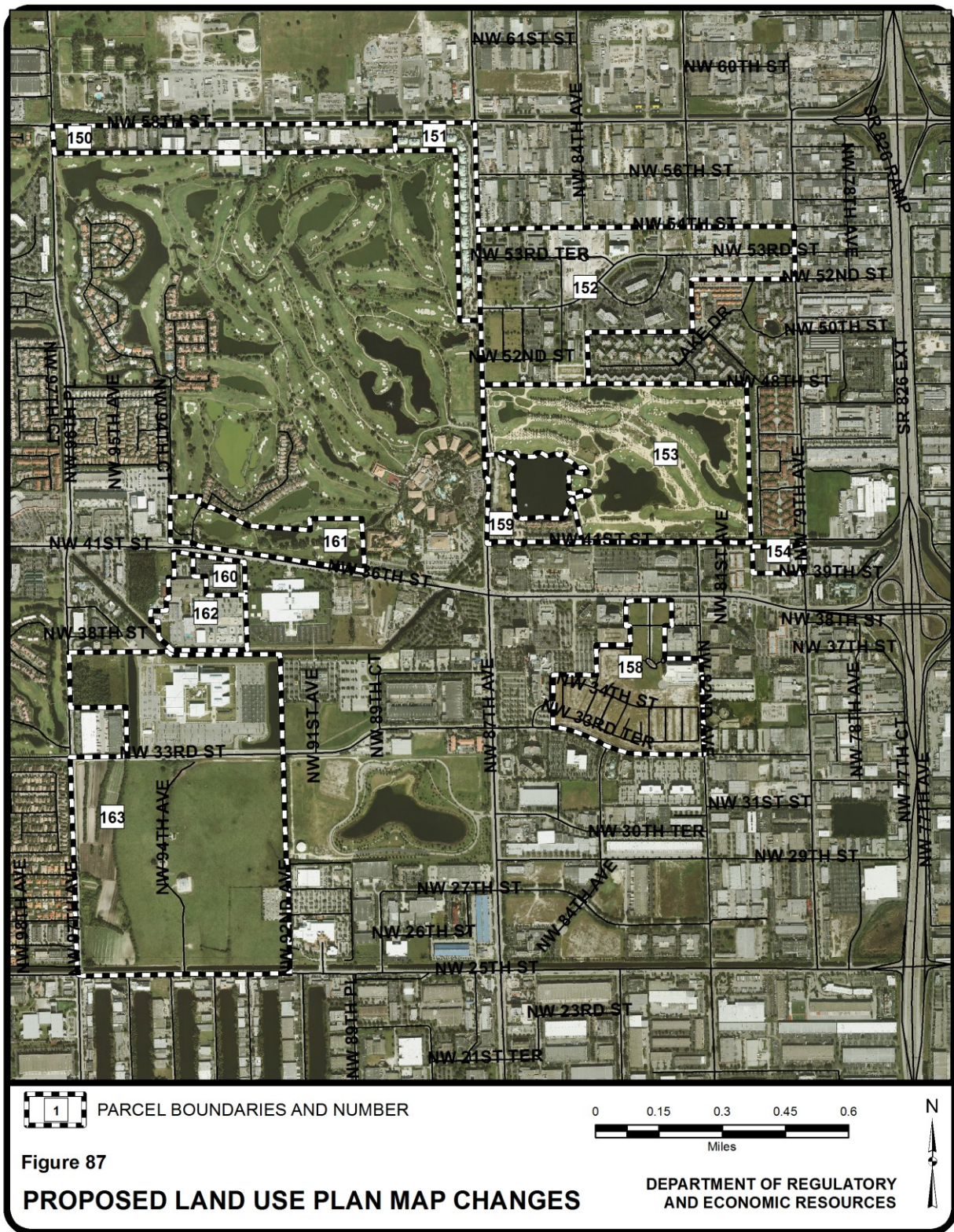
Parcel No.	Parcel General Location	Municipality	Requested Category Change(s)		Acres ±
			From	To	
38	Southwest corner of NW 7 Avenue and NW 207 Street	Miami Gardens	Parks and Recreation	Low Medium-High Density Residential	70
76	West of NE 6 Avenue between NE 69 Street and NE 63 Street	Miami	Low-Medium Density Residential	Business and Office Office/Residential	5
77	Southwest corner of North Miami Avenue and NW 75 Street	Miami	Medium-High Density Residential	Industrial and Office Business and Office	12
98	Northwest corner of NE 12 Street and NE 2 Avenue	Miami	Industrial and Office	Business and Office	94 <u>77</u>
105	Southwest corner of NE 2 Avenue and NE 36 Street	Miami	Medium-High Density Residential and <u>Industrial and Office</u>	Business and Office	130
125	West of NW 27 Avenue between NW 17 Street and SR 836 Expressway	Miami	Low-Medium Density Residential	Medium Density Residential	121 <u>115</u>
126	Northeast corner of NW 37 Avenue and NW 14 Street	Miami	Low Density Residential	Low-Medium Density Residential	219 <u>217</u>
149	Southeast corner of NW 58 Street and NW 109 Avenue	Doral	Business and Office <u>Low-Medium Density Residential</u>	<u>Business and Office</u> Low-Medium Den. Residential	4
151	Southwest corner of NW 58 Street and NW 87 Avenue	Doral	Business and Office <u>Low-Medium Density Residential</u>	Low-Medium Den. Residential <u>Business and Office</u>	27 <u>20</u>

Parcel No.	Parcel General Location	Municipality	Requested Category Change(s)		Acres ±
			From	To	
152	Southeast corner of NW 54 Street and NW 87 Avenue	Doral	<u>Business and Office & Office/Residential</u>	Business and Office	120
153	North of NW 41 Street between NW 87 Avenue and NW 79 Avenue	Doral	Medium Density Residential and Industrial and Office	Parks and Recreation <u>Business and Office</u>	122
155	Northeast corner of NW 82 Avenue and NW 25 Street	Doral	Withdrawn		196
156	East of NW 79 Avenue between NW 25 Street and NW 29 Street	Doral	Withdrawn		6
167	Northwest corner of NW 41 Street and NW 97 Avenue	Doral	Office/Residential	<u>Low-Medium Density Residential</u>	43
168	Southwest corner of West Flagler Street and SW 103 Court	Sweetwater	Low Density Residential	Business and Office	4
202	North of South Dixie Highway between SW 59 Place and SW 63 Avenue	South Miami	Low Density Residential Office/Residential and Institutions, Utilities and Communications	Business and Office	47
227	East of Old Cutler Road between SW 184 Street and SW 176 Street	Palmetto Bay	Estate Density Residential and Office/Residential	Parks and Recreation	29 <u>28</u>
228	Northeast of SW 184 Street and east of Old Cutler Road	Palmetto Bay	Office/Residential	Environmentally Protected Parks	10
232	West of SW 87 Avenue between SW 232 Street and theoretical SW 198 Street	Cutler Bay	Estate, Low and Low-Medium Density Residential	Environmental Protection	674 <u>633</u>
235	North of SW 232 Street between the Florida Turnpike and SW 87 Avenue	Cutler Bay	Estate, Low, and Low-Medium Density Residential	Environmental Protection	94 <u>62</u>
238	West of SW 137 Avenue between theoretical 290 Terrace and theoretical 291 Street	Homestead	Low-Medium Density Residential	Business and Office <u>Medium Density Residential</u>	17
243	South of SW 312 Street between theoretical NE 26 Terrace and theoretical NE 30 Avenue	Homestead	Low-Medium Density Residential	Business and Office	22 <u>20</u>
250	South of 304 Street between NE 12 avenue and NE 15 Avenue	Homestead	Low-Medium Density Residential	Business and Office	9 <u>5</u>
255	North of NE 8 Street between SW 170 Avenue and N	Homestead	Low-Medium Density	Medium Density	123

Parcel No.	Parcel General Location	Municipality	Requested Category Change(s)		Acres ±
			From	To	
	Krome Avenue		Residential	Residential	<u>115</u>
259	Southeast corner of NW 2 Avenue and NW 15 Street	Homestead	Low-Medium Density Residential	Office/Residential	29 <u>28</u>
294	Between SW 177 and SW 176 Avenues and between SW 42 and SW 72 Streets	unincorporated	Inside the 2025 UEA; Open Land; Institutions, Utilities and Communications; Agriculture	Outside the 2025 UEA; Open Land; Institutions, Utilities and Communications; Agriculture	4,294 <u>950</u>

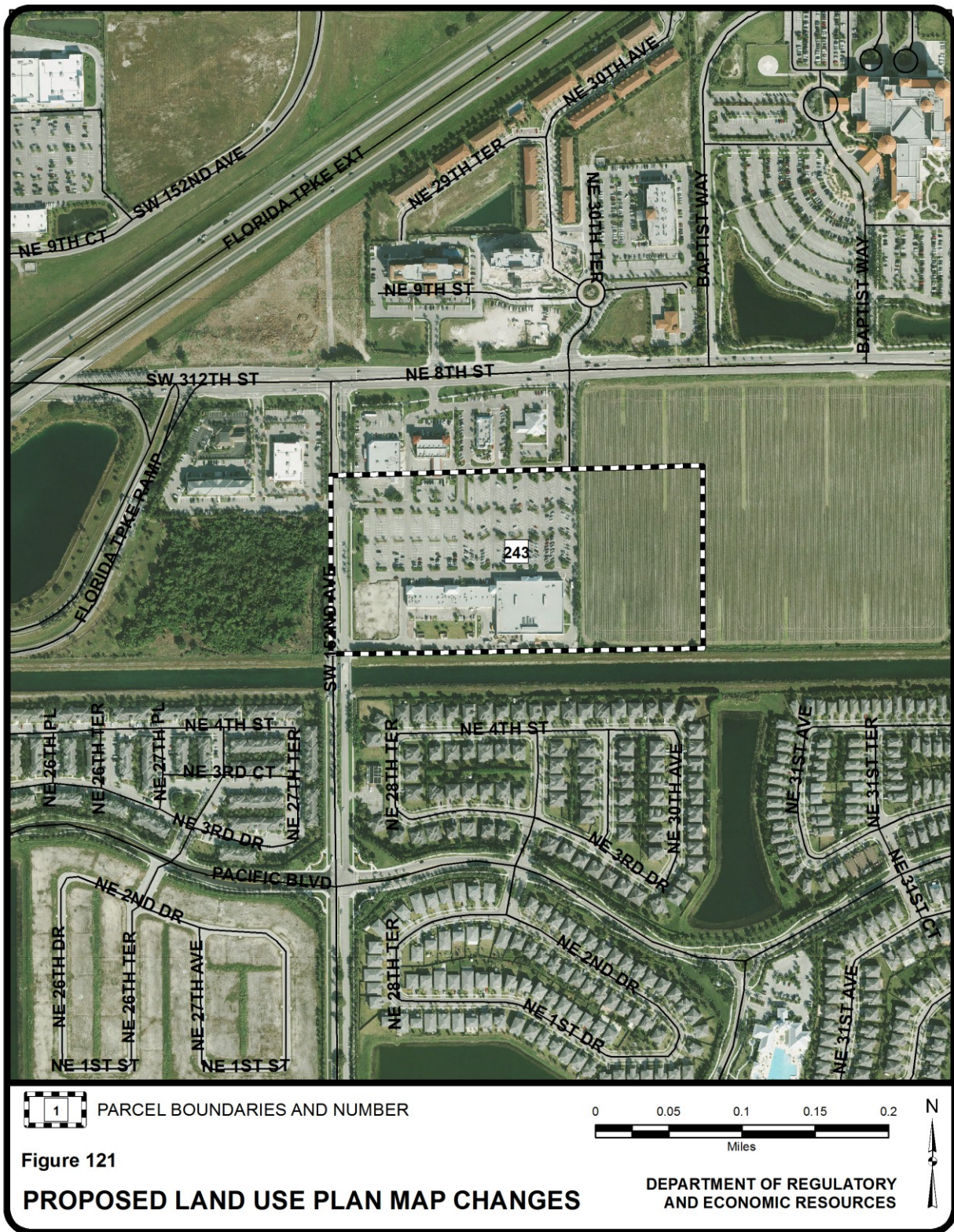


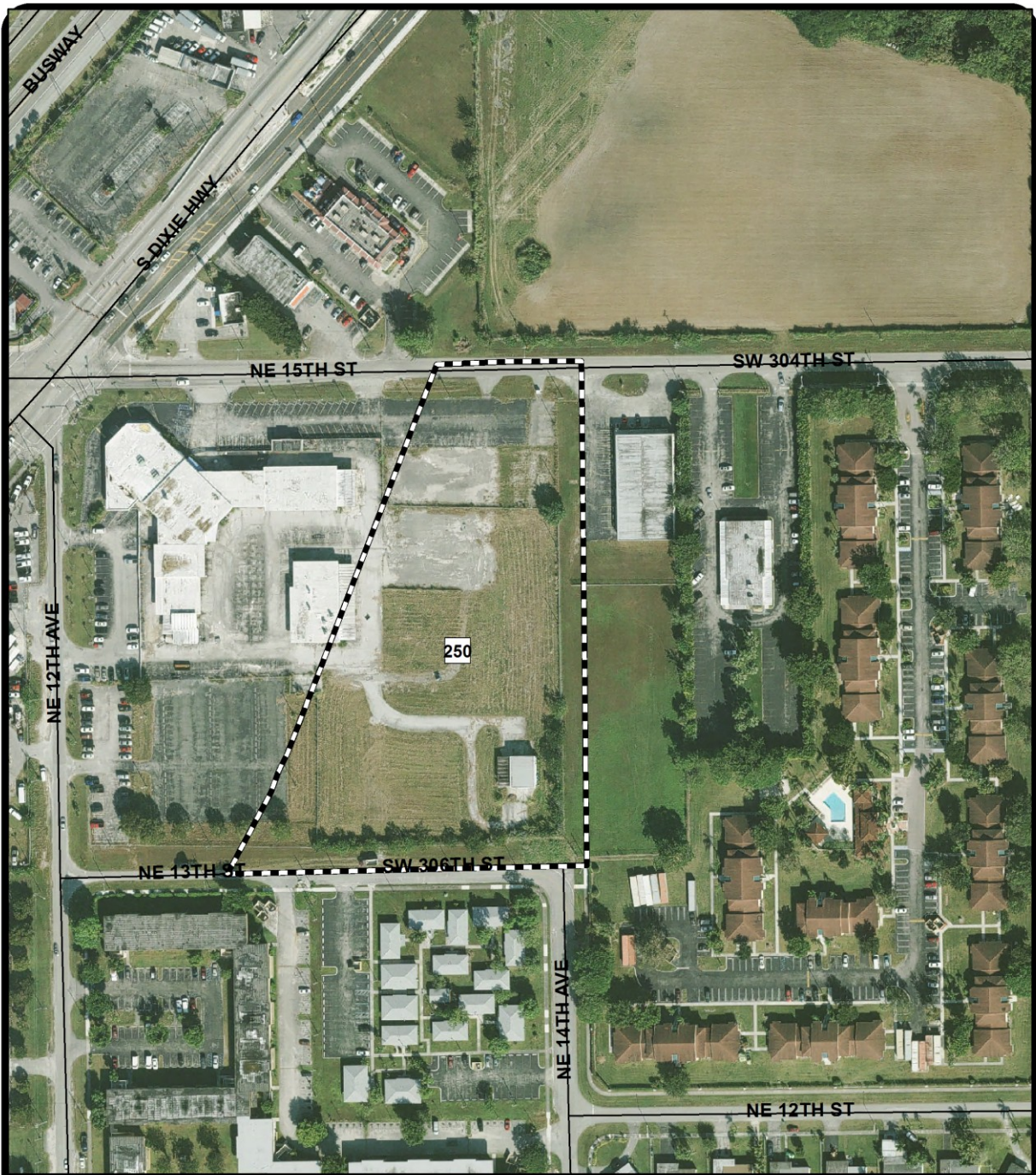












PARCEL BOUNDARIES AND NUMBER

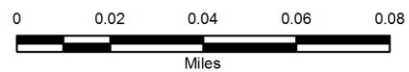
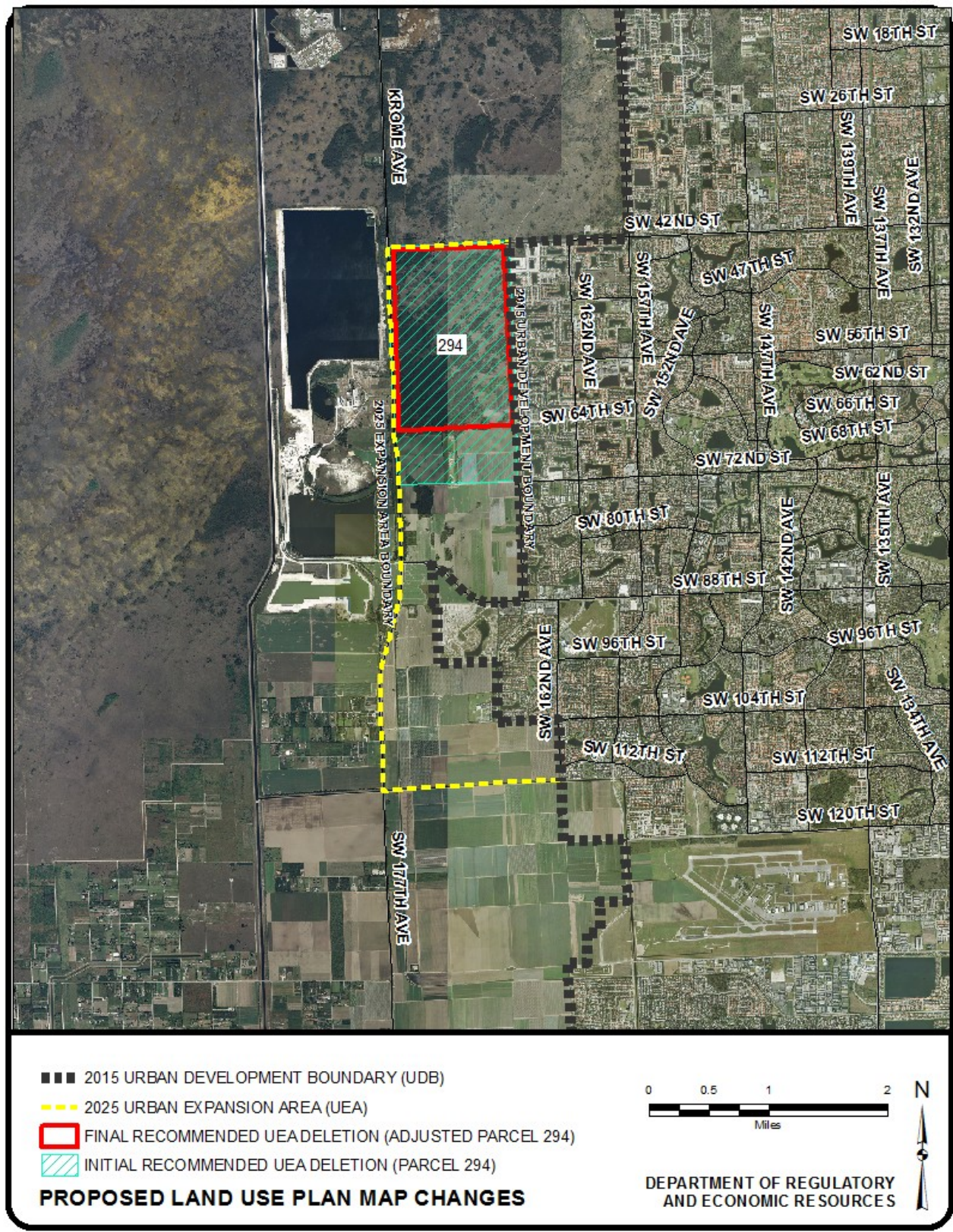


Figure 124

PROPOSED LAND USE PLAN MAP CHANGES

DEPARTMENT OF REGULATORY
AND ECONOMIC RESOURCES

REVISED PARCEL 294



Principal Reasons for Recommended Changes:

1. The recommended withdrawal of the community urban center that was proposed to be designated on the Comprehensive Development Master Plan (CDMP) Adopted 2015 and 2025 Land Use Plan (LUP) map is in response to the Objections, Recommendations and Comments (ORC) report issued by the Department of Economic Opportunity (DEO) on August 23, 2013. The DEO raised an objection to the community urban center regarding the provision of data and analysis to support the urban center designation. The development program anticipated at this time is within the development levels permitted by the current land use designations. If the development program increases above these levels, the Department will file an amendment to the CDMP to designate an urban center on the LUP map, and that amendment will be accompanied by adequate data and analysis to support the designation.
2. Staff recommends the withdrawal of Parcels 155 and 156 and refinement to the description and/or boundaries of several of the proposed Parcels within municipalities as listed in the Table 1 above to reflect the most current available data for the municipal comprehensive plans.
3. Staff recommends adjusting Parcel 294 from 1,291 acres to 950 acres. The UEA impacted by Parcel 294 area contains $\pm 2,816$ acres located generally between SW 42 and SW 112 Streets and between SW 162 and SW 177 Avenues. Approximately 950 acres are proposed to be removed from within the UEA based on the factors outlined below.
 - The West Wellfield Protection Area - In June 2013, the United States Geological Survey (USGS), on behalf of Miami-Dade County, published a new groundwater modeling study of the Northwest and West Wellfields titled '*Estimation of Capture Zones and Drawdown at the Northwest and West Well Fields, Miami Dade County, Florida, Using an Unconstrained Monte Carlo Analysis: Recent (2004) and Proposed Conditions*'. Amendments to the West Wellfield Protection Area are anticipated as a result of this new study. Further amendments to this Urban Expansion Area should be considered once the wellfield protection boundaries have been amended. The Everglades Buffer Areas by the South Florida Water Management District (SFWMD); *identified in Policy LU-8G(i)(b) as areas that shall not be considered for urban expansion*
 - The CERP Project footprints LU-8G(ii)(d) - While the Bird Drive Recharge Area remains within the CERP boundary as delineated by the South Florida Water Management District (SFWMD), the project was removed from SFWMD implementation plans in 2010 due to its high cost/low benefit ratio.

APPLICATION NO. 2

The information presented below identifies the changes proposed to EAR-Based Application No. 2 addressing the Transportation Element subsequent to the May 22, 2013 Board of County Commissioners public hearing on the EAR-Based Applications. The changes are identified by paragraph reference numbers used in the *Staff Applications, October 2012 Cycle EAR-Based Applications to Amend the Comprehensive Development Master Plan* report dated March 27, 2013.

Part B - Traffic Circulation Subelement

Page 20, Change No. 28

TC-4C. Miami-Dade County's priority in construction, maintenance, and reconstruction of roadways, and the allocation of financial resources, shall be given first to serve the area within the ~~Urban Development Boundary of the Land Use Plan map Urban Infill Area and Transportation Concurrency Exception Areas. Second priority shall be given to serve the area within the Urban Infill Area and the Urban Development Boundary and the Urban Infill Area. Second~~ And third priority in transportation allocations shall support the staged development of the urbanizing portions of the County within the Urban Expansion Area (UEA). Transportation improvements which encourage development in Agriculture and Open Land areas shall be avoided, except for those improvements which are necessary for public safety and which serve the localized needs of these non-urban areas. Areas designated Environmental Protection shall be particularly avoided.

Part C – Mass Transit Subelement

Page 42 to 43; Change No. 6

MT-1A. The minimum peak-hour mass transit level-of-service shall be that all areas within the Urban Development Boundary (UDB) of the Land Use Plan (LUP) which have a combined resident and work force population of more than 10,000 persons per square mile shall be provided with public transit service having 30 ~~60~~-minute headways and an average route spacing of one mile provided that:

- 1) The average combined population and employment density along the corridor between the existing transit network and the area of expansion exceeds 4,000 per square mile, and the corridor is 0.5 miles on either side of any necessary new routes or route extensions to the area of expansion;
- 2) It is estimated that there is sufficient demand to warrant the service;
- 3) The service is economically feasible; and
- 4) The expansion of transit service into new areas is not provided at the detriment of existing or planned services in higher density areas with greater need.

Page 43, Change No. 7

MT-1D. Miami-Dade County shall adopt, and update annually, a 10 ~~5~~-year Transit Development ~~Program~~ Plan to address transit needs consistent with adopted Level of Service policies and transit planning guidelines.

Principal Reason for Recommendations:

In the Objections, Recommendations and Comments (ORC) report issued by the Department of Economic Opportunity (DEO) on August 23, 2013, objection number three related to consistency between elements and internal consistency in the prioritization of capital improvements by geographic area. In response, RER has deleted the proposed new Policy CIE-3D, and revised Policy CIE-5A, Traffic Circulation subelement policy TC-4C and Land Use Policy LU-2B. The changes to policy TC-4C are outlined above; changes to the CIE policies are located in Application 9 for the Capital Improvements Element; and changes to Policy LU-2B can be found in Application 1 for the Land Use Element.

In the ORC report, technical comment number three questioned the proposed change for Policy MT-1A in the LOS from 30-minute headways to 60-minute headways. After further analysis and in consultation with the County's Transit Department it was determined to maintain the County's current LOS with 30-minute headways. This change is reflected in Policy MT-1A (above) and also in the corresponding text in the Capital Improvements Element.

Miami-Dade Transit has requested the change in Policy MT-1D to be consistent with state regulations, which changed in 2007 to require 10-year horizon instead of 5-years.

APPLICATION NO. 4

The information presented below identifies the changes proposed to EAR-Based Application No. 4 addressing the Conservation, Aquifer Recharge and Drainage Element subsequent to the May 22, 2013 Board of County Commissioners public hearing on the EAR-Based Applications. The changes are identified by paragraph reference numbers used in the *Staff Applications, October 2012 Cycle EAR-Based Applications to Amend the Comprehensive Development Master Plan* report dated March 27, 2013.

Appendix B

List of Federal, and State and County Designated Endangered, Threatened, Rare, and Special Concern Potentially Endangered Fauna in Miami-Dade County

Scientific Name	Common Name	Designated State	Status Federal	County
FISH				
<i>Acipenser brevirostrum</i>	Shortnose Sturgeon	EE	E	Y
<i>Acipenser oxyrinchus desotoi</i>	Atlantic (Gulf) Sturgeon	SSG ET	T	Y
<i>Acipenser oxyrinchus oxyrinchus</i>	Atlantic Sturgeon	FE	E	Y
<i>Cyprinodon variegatus hubbsi</i>	Lake Eustis pupfish	SSG	NL	
<i>Etheostoma histrio</i>	Harlequin darter	SSC	NL	
<i>Etheostoma olmstedii maculaticeps</i>	Southern tessellated darter	SSC	NL	Y
<i>Fundulus jenkinsi</i>	Saltmarsh topminnow	SSC	NL	Y
<i>Menidia conchorum</i>	Key silverside	ST	NL	Y
<i>Micropterus notius</i>	Suwannee bass	SSG	NL	
<i>Notropis melanostomus</i>	Blackmouth shiner	E	NL	
<i>Pristis pectinata</i>	Smalltooth Sawfish	NL FE	E	Y
<i>Pteronotropsis welaka</i>	Bluenose shiner	SSC	NL	
<i>Rivulus marmoratus</i>	Mangrove rivulus	SSC	NL	Y
<i>Starksia starcki</i>	Key blenny	SSG	NL	
AMPHIBIANS AND REPTILES				
<i>Alligator mississippiensis</i>	American alligator	SSCFT(S/A)	T(S/A)	Y
<i>Ambystoma cingulatum</i>	Flatwoods salamander	SSC	T	
<i>Caretta caretta</i>	Loggerhead sea turtle	ET	T	
<i>Chelonia mydas</i>	Green sea turtle	FE	E	
<i>Crocodylus acutus</i>	American crocodile	FFT	E	Y
<i>Dermochelys coriacea</i>	Leatherback sea turtle	FE	E	
<i>Drymarchon corais couperi</i>	Eastern indigo snake	ET	T	Y
<i>Elaphe guttata guttata</i>	Red rat snake	± SSC NL	± NL	Y
<i>Eretmochelys imbricata</i>	Hawksbill sea turtle	FE	E	
<i>Eumeces egregius lividus</i>	Bluetail mole skink	T	T	
<i>Eumeces egregius egregius</i>	Florida Keys mole skink	SSC	NL	Y
<i>Gopherus polyphemus</i>	Gopher Tortoise	SSG ST	C2	Y
<i>Graptemys barbouri</i>	Barbour's map turtle	SSC	NL	
<i>Haldeotriton wallacei</i>	Georgia blind salamander	SSC	NL	
<i>Hyla andersonii</i>	Pine barrens treefrog	SSG	NL	
<i>Kinosternon baurii</i>	Striped mud turtle	ET ST	NL	Y
<i>Lepidochelys Kempii</i>	Atlantic (Kemp's) Ridley sea turtle	EE	E	
<i>Macrocllemys temminckii</i>	Alligator snapping turtle	SSC	NL	
<i>Malaclemys terrapin</i>	Mangrove terrain turtle	NL	NL	Y
<i>Neoseps reynoldsi</i>	Sand skink	ET	T	
<i>Nerodia clarkii taeniata</i>	Atlantic salt marsh water snake	ET	T	Y
<i>Pituophis melanoleucus mugitus</i>	Florida pine snake	SSC	C2NL	Y
<i>Pseudemys concinna suwanniensis</i>	Suwannee cooter	SSC	NL	Y
<i>Pseudobranchius striatus lustricolus</i>	Gulf hammock dwarf siren	NL	C2	
<i>Rana capito Lithobates capito</i>	Gopher frog	SSC	NL	Y
<i>Rana okaloosae</i>	Florida bogfrog	SSC	NL	
<i>Sitlosejma extenuatum</i>	Short-tailed snake	ST	NL	Y
<i>Storeria dekayi victa</i>	Florida brown snake	T	NL	
<i>Tantilla oolitica</i>	Rim Rock Crowned snake	ST	C2NL	Y
<i>Thamnophis sauritus sackeni</i>	Florida Ribbon Snake	± NL	NL	Y
BIRDS				
<i>Accipiter cooperii</i>	Cooper's hawk	NL	NL	Y
<i>Aimophila aestivalis</i>	Bachman's sparrow	NL	NL	Y
<i>Ammodramus maritimes pennisulae</i>	Scott's seaside sparrow	SSC	NL	Y

Scientific Name	Common Name	Designated State	Status Federal	County
Ammodramus maritimus juncicollis	Wakulla seaside sparrow	SSC	NL	
Ammodramus maritimus mirabilis	Cape sable seaside sparrow	FE	E	Y
Ammodramus savannarum floridanus	Florida grasshopper sparrow	E	E	
Aphelocoma coerulescens	Florida scrub jay	ET	T	
Aramus guarauna	Limpkin	SSC	NL	Y
Ardea herodias	Great blue heron	NL	NL	Y
Athene cunicularia	Florida burrowing owl	SSC	NL	Y
Botaurus lentiginosus	American bittern	NL	NL	Y
Buteo brachyurus	Short-tailed hawk	NL	NL	Y
Calidris canutus rufa	Red knot	NL	C	Y
Campephilus principalis principalis	Ivory-billed woodpecker	FE	E	Y
Caracara cheriway	Crested caracara	T	T	
Charadrius melodus	Piping plover	ET	T	Y
Charadrius alexandrinus tenuirostris	Southeastern (Cuban) snowy plover	ST	NL	Y
Chordeiles minor	Antillean nighthawk	NL	NL	Y
Circus cyaneus	Northern harrier	NL	NL	Y
Cistothorus palustris griseus	Worthington's marsh wren	SSC	NL	Y
Cistothorus palustris marianae	Marian's marsh wren	SSC	NL	Y
Coccyzus minor	Mangrove cuckoo	NL	NL	Y
Dendroica kirtlandii	Kirtland's warbler	FE	NLE	
Dendroica petechia gundlachi	Cuban yellow throated warbler	NL	NL	Y
Egretta caerulea	Little blue heron	SSC	NL	Y
Egretta rufescens	Reddish egret	SSC	C2NL	Y
Egretta thula	Snowy egret	SSC	NL	Y
Egretta tricolor	Tricolored heron	SSC	NL	Y
Elanoides forficatus	Swallow-tailed kite	NL	NL	Y
Elanus leucurus	White-tailed kite	NL	NL	Y
Eudocimus albus	White ibis	SSC	NL	Y
Falco columbarius	Merlin	NL	NL	Y
Falco peregrinus	Peregrine falcon	ENL	NL	Y
Falco sparverius paulus	Southeastern American kestrel	ST	C2NL	Y
Frigata magnificens	Magnificent frigate bird	NL	NL	Y
Grus canadensis pratensis	Florida sandhill crane	ST	NL	Y
Grus americana	Whooping crane	SSC FE/XN	NLE/XN	
Haematopus palliatus	American oyster catcher	SSC	NL	Y
Haliaeetus leucocephalus *	Bald eagle	TNL *	ENL	Y
Ixobrychus exilis	Least bittern	NL	NL	Y
Laterallus jamaicensis	Black rail	NL	NL	Y
Mycteria americana	Wood stork	FE	E	Y
Nyctanassa violacea	Yellow-crowned night heron	NL	NL	Y
Nycticorax nycticorax	Black-crowned night heron	NL	NL	Y
Pandion haliaetus	Osprey	SSC NL	NL	Y
Passerina ciris	Painted bunting	NL	NL	Y
Patagioenas leucocephala	White crowned pigeon	ST	NL	Y
Pelecanus occidentalis	Brown pelican	SSC	NL	
Picoides borealis	Red-cockaded woodpecker	SSC FE	E	Y
Picoides villosus	Hairy woodpecker	NL	NL	Y
Platalea ajaja	Roseate spoonbill	SSC	NL	Y
Polyborus plancus audubonii	Audobon's crested caraca	ET	T	Y
Pterodroma hasitata	Black-capped petrel	NL	NL	Y
Rallus longirostris insularum	Mangrove clapper rail	NL	NL	Y
Rostrhamus sociabilis	Snail kite	E	E	
Rostrhamus sociabilis plumbeus	Everglades snail kite	FE	E	Y
Rynchops niger	Black skimmer	SSC	NLC	Y
Setophaga discolor	Prairie warbler	NL	NL	Y
Sterna antillarum	Least tern	ST	NL	Y

Scientific Name	Common Name	Designated State	Status Federal	County
<i>Sterna dougallii dougallii</i>	Roseate tern	FT	T	Y
<i>Thalasseus sandvicensis</i>	Sandwich tern	NL	NL	Y
<i>Vermivora bachmanii</i>	Bachman's warbler	FE	E	Y
<i>Vireo altiloquus</i>	Black-whiskered vireo	NL	NL	Y
MAMMALS				
<i>Balaenoptera borealis</i>	Sei whale	FE	NLE	
<i>Balaenoptera physalus</i>	Finback whale	FE	E	
<i>Blarina carolinensis shermani</i>	Sherman's short-tailed shrew	SSC	C2	
<i>Eubalaena glacialis</i>	North Atlantic right whale	FE	NLE	
<i>Eumops glaucinus floridanus</i>	Florida bonneted (mastiff) bat	FE ST	C4	Y
<i>Felis concolor coryi</i> <i>Felis concolor coryi</i>	Florida Panther <i>Florida Panther</i>	FE <i>FE</i>	FE <i>FE</i>	Y <i>Y</i>
<i>Lutra canadensis</i>	River otter	FE NL	NL	Y
<i>Megaptera novaeangliae</i>	Humpback whale	FE	E	
<i>Monachus tropicalis</i>	Caribbean monk seal	NL	NL	Y
<i>Neotoma floridana smalli</i>	Key Largo woodrat	FE	E	Y
<i>Neovision vision evergladensis</i>	Everglades mink	ST	NL	Y
<i>Odocoileus virginianus clavium</i>	Key deer	E	E	
<i>Peromyscus gossypinus allapaticola</i>	Key Largo Cotton Mouse	FE	E	Y
<i>Peromyscus polionotus allophrys</i>	Choctawhatchee beach mouse	E	E	
<i>Peromyscus polionotus niveiventris</i>	Southeastern beach mouse	FT	T	Y
<i>Peromyscus polionotus phasma</i>	Anastasia Island Beach mouse	E	E	
<i>Peromyscus polionotus trissyllepsis</i>	Perdido Key mouse	E	E	
<i>Physeter catodon</i>	Sperm whale	FENL	E	
<i>Physter macrocephalus</i>	Sperm whale	E	NL	
<i>Plecotus rafinesquii</i>	Rafinesque's big eared bat	NL	NL	Y
<i>Podomys floridanus</i>	Florida mouse	SSC	C2NL	Y
<i>Puma (= Felis) concolor coryi</i>	Florida panther	FE	E	Y
<i>Sciurus niger avicennia</i>	Big Cypress fox squirrel	SSC ST	C2NL	Y
<i>Sciurus niger shermani</i>	Sherman's fox squirrel	SSC	C2NL	Y
<i>Trichechus manatus latirostris</i>	Florida manatee	FE	E	Y
<i>Ursus americanus floridanus</i>	Florida black bear	NL*	NL	Y
INVERTEBRATES				
CRUSTACEANS				
<i>Cranonyx gradimanus</i>	Florida cave amphipod	NL	NL	Y
<i>Palaemonetes cummingi</i>	Squirrel chimney cave shrimp	NL	T	
<i>Procambarus econfinae</i>	Panama city crayfish	SSC	NL	
<i>Procambarus erythropus</i>	Sims sink crayfish	SSC	NL	
<i>Procambarus Pictus</i>	Black creek crayfish	SSC	NL	
CORALS				
<i>Acropora cervicornis</i>	Staghorn coral	FT	T	Y
<i>Acropora palmata</i>	Elkhorn coral	FT	T	Y
<i>Agaricia lamarcki</i>	Lamarck's sheet coral	NL	NL	Y
<i>Agaricia spp</i>	Lettuce corals	NL	NL	Y
<i>Colpophyllia natans</i>	Boulder brain coral	NL	NL	Y
<i>Dendrogyra cylindrus</i>	Pillar coral	FE ST	NL	Y
<i>Diploria cilvosa</i>	Knobby brain coral	NL	NL	Y
<i>Diploria labyrinthiformis</i>	Grooved brain coral	NL	NL	Y
<i>Dipolria strigosa</i>	Symmetrical brain coral	NL	NL	Y
<i>Eusmilia fastigiata</i>	Smooth flower coral	NL	NL	Y
<i>Meandrina meandrites</i>	Maze coral	NL	NL	Y

Scientific Name	Common Name	Designated State	Status Federal	County
<i>Montastrea annularis</i>	Boulder star coral	NL	NL	Y
<i>Montastrea cavernosa</i>	Great star coral	NL	NL	Y
<i>Montastrea faveolata</i>	Mountainous star coral	NL	NL	Y
<i>Montastrea franksi</i>	Star coral	NL	NL	Y
<i>Mussa angulosa</i>	Spiny flower coral	NL	NL	Y
<i>Mycetophyllia aliciae</i>	Knobby cactus coral	NL	NL	Y
<i>Mycetophyllia ferox</i>	Rough cactus coral	NL	NL	Y
<i>Mycetophyllia lamarckiana</i>	Lamarck's cactus coral	NL	NL	Y
<i>Siderastrea siderea</i>	Elliptical star coral	NL	NL	Y
INSECTS				
<i>Anaea troglodyta floralis</i>	Florida leafwing butterfly	NL	C	Y
<i>Aphodius troglodytes</i>	Gopher tortoise aphodius commensal scarab beetle	NL	NL	Y
<i>Atrytone agros argos</i>	Eastern beard-grass skipper	NL	NL	Y
<i>Ceraclea floridana</i>	Florida ceraclea long horn caddishfly	NL	NL	Y
<i>Cyclargus thomasi bethunebakeri</i>	Miami blue butterfly	EE	NLE	Y
<i>Cyclophala miamiensis</i>	Miami roundhead scarab beetle	NL	C	Y
<i>Eumaeus atala floridana</i>	Florida atala butterfly	NL	C	Y
<i>Heraclides aristodemus ponceanus</i>	Schaus swallowtail butterfly	EE	E	Y
<i>Micronaspsis floridana</i>	Florida intertidal firefly	NL	NL	Y
<i>Mixogaster delongi</i>	Delong's mixogaster flower fly	NL	NL	Y
<i>Mycotrupes pedester</i>	Scrub island burrowing scarab beetle	NL	NL	Y
<i>Oxyethira florida</i>	Florida oxyethiran micro-caddishfly	NL	NL	Y
<i>Photuris brunnipennis floridana</i>	Everglades brownwing firefly	NL	NL	Y
<i>Strymon acis bartrami</i>	Bartram's scrub-hairstreak butterfly	NL	C	Y
MOLLUSCS				
<i>Amblema neislerii</i>	Fat three-ridge	NL	T	
<i>Elliptio chipolaensis</i>	Chipola slabshell	NL	T	
<i>Elliptioideus sloarianus</i>	Purple bankclimber	NL	T	
<i>Lampsilis subangulata</i>	Shinyrayed Pocketbook	NL	T	
<i>Liguus fasciatus var.</i>	Florida tree snail	SSC	NL	Y
<i>Medionidus penicillatus</i>	Gulf moccasinshell	NL	E	
<i>Medionidus simpsonianus</i>	Ochlocknee moccasinshell	NL	E	
<i>Orthalicus reses reses</i>	Stock Island tree snail	FT	T	Y
<i>Pleurobema pyriforme</i>	Oval pigtoe	NL	E	
<i>Strombus gigas</i>	Queen conch	NL	C	Y

Key:

NL = Not Listed

1) Federal Listings:

E = Listed as Endangered Species in the List of Endangered and Threatened Wildlife and Plants under the provisions of the Endangered Species Act. Defined as any species that is in danger of extinction throughout all or a significant portion of its range.

T(S/A) = Listed only because of similarity in appearance to the American crocodile.

FE/FX = Experimental population in Florida.

~~C1 = Candidate Species for addition to the List of Endangered and Threatened Wildlife and Plants, Category 1. Taxa for which the US Fish and Wildlife Service (USFWS) currently has substantial information on hand to support the biological appropriateness of proposing to list the species as endangered or threatened.~~

~~C2 = Candidate Species, Category 2. Taxa for which information now in possession of the USFWS indicates that proposing to list the species as endangered or threatened is possibly appropriate, but for which conclusive data on biological vulnerability and threat(s) are not currently available to support proposed rules at this time.~~

C = Candidate Species for addition to the List of Endangered and Threatened Wildlife and Plants. Includes taxa for which: the US Fish and Wildlife Service (USFWS) currently has substantial information on hand to support the biological appropriateness of proposing to list the species as endangered or threatened; or the USFWS currently possesses information indicating that proposing to list the species as endangered or threatened is possibly appropriate, but for which conclusive data on biological vulnerability and threat(s) are not currently available to support proposed rules at this time.

2) State Listings:

~~E = Listed as Endangered Species by the Florida Game and Freshwater Fish and Wildlife Conservation Commission (FGFWCC). Defined as a species, subspecies, or isolated population which is so rare or depleted in number or so restricted in range of habitat due to any man-made or natural factors that it is in immediate danger of extinction or extirpation from the State, or which may attain such a status within the immediate future.~~

~~T = Listed as Threatened Species by the FGFWCC. Defined as a species, subspecies, or isolated population which is acutely vulnerable to environmental alteration, declining in number at a rapid rate, or whose range or habitat is declining in area at a rapid rate and as a consequence is destined or very likely to become an endangered species within the foreseeable future.~~

FE/FT= Listed as Federally-designated Endangered and Threatened Species. Defined as species of fish or wild animal life, subspecies or isolated populations of species or subspecies, whether vertebrate or invertebrate, that are native to Florida and are classified as Endangered and Threatened under the Fish and Wildlife Conservation Commission (Commission) rule by virtue of designation by the United States Departments of Interior or Commerce as endangered or threatened under the Federal Endangered Species Act, 16 U.S.C. § 1531 et seq. and rules thereto; the definition of Federally-designated Endangered and Threatened Species does not include species that are not within the Commission's constitutional authority.

FT(S/A) = Listed only because of similarity in appearance to the American crocodile.

FE/FX = Experimental population in Florida

ST= Listed as State-designated Threatened Species by the Fish and Wildlife Conservation Commission (Commission). Defined as species of fish or wild animal life, subspecies, or isolated population of a species or subspecies, whether vertebrate or invertebrate, that are native to Florida and are classified as Threatened as determined by paragraph (a), (b), (c), (d), or (e) in accordance with Rule 68A-27.0012, F.A.C. The designation of a species as threatened shall include all subspecies unless stated otherwise in Commission rule.

SSC= Listed as a Species of Special Concern by the Fish and Wildlife Conservation Commission under an earlier listing process. Either the species is being evaluated for listing as a State-designated Threatened species or not enough data currently exist to make a listing determination. Listed as Species of Special Concern by the FGFWCC. Defined as a species, subspecies, or isolated population which warrants special protection, recognition, or consideration because it has an inherent significant vulnerability to habitat modification, environmental alteration, human disturbance, or substantial human exploitation which, in the foreseeable future, may result in its becoming a threatened species.

C= A species of fish or wild animal life, subspecies, or isolated populations of species or subspecies, whether invertebrate or vertebrate, that the Fish and Wildlife Conservation Commission (Commission) has determined warrants listings as a State-designated Threatened Species in accordance with Rule 68A-

27.0012, F.A.C., and is awaiting final Commission action to be added to the list of Florida Endangered and Threatened Species in Rule 68A-27.003, F.A.C.

*= The Fish and Wildlife Conservation Commission has delisted these species; however, the bald eagle continues to be under the protection of the state in accordance to rule 68A-16.002, F.A.C., and its Bald Eagle Management Plan, adopted on April 9, 2008, and the bear is protected under rule 68A-4.009, F.A.C., and the Florida Black Bear management Plan, approved on June 27, 2012.

3) County Listings:

Y = Miami-Dade County endangered, threatened, rare or special concern fauna species as updated from previously adopted CDMP lists, due to low population numbers or limited/localized population; impacts resulting from habitat destruction or environmental contamination; or nesting destruction/disturbance/failures.

Principal Reason for Recommendations:

In the Objections, Recommendations and Comments (ORC) report issued by the Department of Economic Opportunity (DEO) on August 23, 2013, comment number seven related that Appendix B contained definitions and terminology no longer used by the Florida Fish and Wildlife Conservation Commission (FWCC) as outlined in the FWCC's letter of July 23, 2013. Due to this RER has revised Appendix B to be consistent with current FWCC language.

APPLICATION NO. 7

The information presented below identifies the changes proposed to EAR-Based Application No. 7 addressing the Coastal Management Element subsequent to the May 22, 2013 Board of County Commissioners public hearing on the EAR-Based Applications. The changes are identified by paragraph reference numbers used in the *Staff Applications, October 2012 Cycle EAR-Based Applications to Amend the Comprehensive Development Master Plan* report dated March 27, 2013.

Application No. 7 Page 42; Change No. 34

34. CM-9A. Development and redevelopment activities in the Coastal High Hazard Area (CHHA), Hurricane Evacuation Zone A, and the Hurricane Vulnerability Zone² Hurricane Zone B shall be limited to those land uses that have acceptable risks to life and property. The basis for determining permitted activities shall include federal, State, and local laws, the pre-disaster study and analysis of the acceptability of various land uses reported in the County's Comprehensive Emergency Management Plan required by Policy CM-10A, when approved, and the following guidelines:

- i) Discourage development on the CHHA, including the barrier islands and shoreline areas susceptible to destructive storm surge;
- ii) Direct new development and redevelopment to high ground along the Atlantic Coastal Ridge and inland environmentally suitable lands;
- iii) Maintain, or reduce where possible, densities and intensities of new urban development and redevelopment within Hurricane Evacuation Zone A to that of surrounding existing development and zoning. ~~All new residential units in Hurricane Evacuation Zone A, whether year round or seasonal, shall be counted in density and intensity unless certified by recorded covenant that the units will not be occupied during hurricane season;~~

Principal Reason for Recommendation:

In the Objections, Recommendations and Comments (ORC) report issued by the Department of Economic Opportunity (DEO) on August 23, 2013, technical comment number six questioned the second sentence in for Policy CM-9A(iii) regarding covenants for residential units within Hurricane Evacuation Zone A. RER concurs with DEO's comment by deleting the second sentence of Policy CM-9A(iii) as noted above with double strikethrough. Upon research it was determined the sentence in question is outdated and was formulated when the barrier islands still contained some unincorporated areas such as Sunny Isles Beach. The County currently has little privately owned land within the CHHA—the majority of these coastal lands are designated as “Environmentally Protected Parks” or “Parks and Recreation” in the CDMP Land Use Plan map.

¹ According to 9-JS-0032.0256, F.A.C., Hurricane Vulnerability Zones are defined as areas delineated in the regional or local evacuation plan as requiring evacuation in the event of a 100-year or category three hurricane event. In Miami-Dade County, the Hurricane Vulnerability Zones are considered Hurricane Evacuation Zones A and B.

APPLICATION NO. 8

The information presented below identifies the changes proposed to EAR-Based Application No. 7 addressing the Intergovernmental Coordination Element subsequent to the May 22, 2013 Board of County Commissioners public hearing on the EAR-Based Applications. The changes are identified by paragraph reference numbers used in the *Staff Applications, October 2012 Cycle EAR-Based Applications to Amend the Comprehensive Development Master Plan* report dated March 27, 2013.

Application No. 8 Pages 11-12; Change No. 22

Table 3
Facilities of Countywide Significance

Department/Facility	Address	Municipality If Applicable
<u>Miami-Dade Water and Sewer Department (WASD)</u>		
Hialeah/Preston WTP	1100 West 2 Ave	Hialeah
Alexander Orr WTP	6800 SW 87 Ave	<u>Miami-Dade</u>
North District WWTP	2575 NE 151 St	North Miami
Central District WWTP	3989 Rickenbacker Cswy	Miami
South District WWTP	8950 SW 232 St	<u>Miami-Dade</u>
<u>Hialeah Reverse Osmosis WTP</u>	<u>NW 166 St & 102 Av</u> <u>(under construction</u> <u>completion June 2013</u>	<u>Hialeah</u>
South Miami Heights WTP	11800 SW 208 Street (Proposed)	<u>Miami-Dade</u>
Existing and Proposed wellfields and elevated tanks under the authority of WASD Regional Pump Stations as may be identified by WASD		
<u>Parks, and Recreation and Open Spaces Department (PAROS)</u>		
Metropolitan Parks – As located by <u>PAROS</u>		Various
Natural Area Preserves – As located by <u>PAROS</u>		Various
Greenways – As located by <u>PAROS</u>		Various
Special Activity Areas – As located by <u>PAROS</u>		Various
District Parks – As located by <u>PAROS</u>		Various
<u>Corrections</u>		
Pre-Trial Detention Center	1321 NW 13 St	Miami
Women's Detention Center	1401 NW 7 Ave	Miami
Turner Guilford Knight Correctional Center	7000 NW 41 St	<u>Miami</u>
Training and Treatment Center	6950 NW 41 St	<u>Miami</u>
Metro West Detention Center	13850 NW 41 St	<u>Miami</u>
<u>Public Health Trust</u>		
Jackson Memorial Hospital	1611 NW 12 Ave	Miami
Jackson South Community Hospital	9333 SW 152 St	<u>Miami-Dade</u>
<u>Jackson North Medical Center</u>	<u>160 NW 170 Street</u>	<u>North Miami Beach</u>

Table 3
Facilities of Countywide Significance

Department/Facility	Address	Municipality If Applicable
<u>Ports and Airports</u>		
Seaport	1015 North America Way	<u>Miami</u>
Miami International Airport	4200 NW 21 Street	<u>Miami-Dade</u>
Opa Locka Airport	4051 NW 145 Street	<u>Miami-Dade/</u> <u>Opa Locka</u>
Opa Locka West Airport	Sections 2 and 3, Township 52, Range 39	
Other facilities as may be identified by the Aviation or Seaport Departments		
Kendall-Tamiami Executive Airport	12800 SW 145 Avenue	<u>Miami-Dade</u>
Homestead General Aviation Airport	28700 SW 217 Avenue	<u>Miami-Dade</u>
Homestead Air Reserve Base	29050 Coral Sea Blvd	<u>Miami-Dade</u>
Other facilities as may be identified by the Aviation or Seaport Departments		
Vizcaya Museum and Gardens	3251 South Miami Ave	Miami
Deering Estate	16701 SW 72 Avenue	Palmetto Bay
Miami-Dade Zoological Park and Gardens (aka Zoo Miami)	12400 SW 152 Street	<u>Miami Dade</u>
Zoo Miami Entertainment Area I	12400 SW 152 Street	<u>Miami-Dade</u>
Zoo Miami Entertainment Area II	12300 SW 152 Street	<u>Miami Dade</u>
Miami-Dade Police Department		
Training Bureau Metro Training Center	9601 NW 58 Street	Doral
MDPD Headquarters Complex	9105 NW 25 Street	Doral
Other facilities as may be identified by the Police Department		
Miami-Dade Fire Rescue Department		
Headquarters, Emergency Operations Center, & Training Complex	9300 NW 41 Street	Doral
Other facilities as may be identified by the Fire Rescue Department		
Florida Power and Light		
Cutler Plant	14925 SW 67 Avenue	Palmetto Bay
Turkey Point Plant (Fossil)	9700 SW 344 Street	<u>Miami Dade</u>
Turkey Point Plant Nuclear	9760 SW 344 Street	<u>Miami Dade</u>
<u>Department of Public Works and Solid Waste Management</u>		
Resources Recovery	6990 NW 97 Avenue	Doral
North Dade Landfill	21300 NW 47 Avenue	<u>Miami Dade</u>
South Dade Landfill	24000 SW 97 Avenue	<u>Miami Dade</u>
Old South Dade Landfill (Closed)	24800 SW 97 Avenue	<u>Miami Dade</u>
58 Street Landfill / Household Hazardous Waste Facility	8831 NW 58 Street	<u>Miami Dade</u>
Northeast Transfer Station	18701 NE 6 Avenue	<u>Miami Dade</u>
West Transfer Station Areas	2900 SW 72 Avenue	<u>Miami Dade</u>
Central Transfer Station Areas	1150 NW 20 St	Miami
Trash and Recycling Stations as may be identified by the <u>Department of Public Works and Solid Waste Department</u>		
Miami-Dade Transit		

Table 3
Facilities of Countywide Significance

Department/Facility	Address	Municipality If Applicable
Miami Intermodal Center Current and future Metrorail station facilities as identified by Miami-Dade Transit Miami-Dade County bus depots, <u>Transit Centers</u> , rail terminals, and transportation maintenance facilities as may be identified by Miami-Dade Transit		<u>Miami</u>

Principal Reason for Recommendation:

In the past, there have been instances whereby certain transit infrastructure improvements have not materialized due to annexation of properties by municipalities. Upon annexation, the County loses regulatory jurisdiction over said properties. As Miami-Dade Transit (MDT) moves forward with the development of enhanced bus service projects and transit hubs, it is imperative that the agency secure regulatory jurisdiction over future transit hub locations. As such, MDT will be pursuing an amendment to Ordinance No. 05-141 adopted by the Board of County Commissioners on July 7, 2005 which sets forth the areas or facilities of countywide significance to add all of the proposed transit centers (referred to as future transit hubs in the MDT's Transit Development Plan) so that the County can retain regulatory control over these areas/facilities and ensure that future development of these areas is done in a manner that provides the greatest benefit to the County and MDT patrons. The change proposed in Table 3 of the ICE will ensure consistency between said table and the proposed amendment to Ordinance No. 05-141.

APPLICATION NO. 9

The information presented below identifies the changes proposed to EAR-Based Application No. 7 addressing the Capital Improvements Element subsequent to the May 22, 2013 Board of County Commissioners public hearing on the EAR-Based Applications. The changes are identified by paragraph reference numbers used in the *Staff Applications, October 2012 Cycle EAR-Based Applications to Amend the Comprehensive Development Master Plan* report dated March 27, 2013.

Application No. 9 Page 8; Change No. 14

Mass Transit

The minimum peak-hour mass transit level of service shall be that all areas within the Urban Development Boundary of the Land Use Plan (LUP) map which have a combined resident and work force population of more than 10,000 persons per square mile shall be provided with public transit service having 30 ~~60~~-minute headways and an average route spacing of one mile provided that:

1. The average combined population and employment density along the corridor between the existing transit network and the area of expansion exceeds 4,000 per square mile. The corridor is 0.5 miles on either side of any necessary new routes or route extensions to the area of expansion;
2. It is estimated that there is sufficient demand to warrant service;
3. The service is economically feasible; and
4. The expansion of transit service into new areas is not provided at a detriment to existing or planned services in higher density areas with greater need.

Application No. 9, Page 11, Change No. 18

~~CIE-3D. Prioritize the allocation of available infrastructure resources to meet the development needs of urban centers.~~

Application No. 9, Page 12, New Change and new paragraph reference number 20.1

CIE-5A. It is intended that previously approved development be properly served prior to new development approvals under the provisions of this Plan. First priority will be to serve the area within the Urban Infill Area and Transportation Concurrency Exception Areas. Second priority shall be given to serve the area within the Urban Infill Area and the Urban Development Boundary of the Land Use Plan (LUP) map. ~~Second priority shall be given to serve the area within the Urban Development Boundary.~~ Second And third priority for investments for services and facilities shall support the staged development of the Urban Expansion Area (UEA). Urban services and facilities which support or encourage urban development in Agriculture and Open Land areas shall be avoided, except for those improvements necessary to protect public health and safety and which service highly localized needs. Areas designated Environmental Protection shall be particularly avoided.

Principal Reasons for Recommendations

In the Objections, Recommendations and Comments (ORC) report issued by the Department of Economic Opportunity (DEO) on August 23, 2013, technical comment number three questioned the proposed change in the LOS from 30-minute headways to 60-minute headways. After further analysis and in consultation with the County's Transit Department it was determined to maintain the County's current LOS with 30-minute headways. This change is reflected in the text (above) in the Capital Improvements Element and also in Mass Transit subelement Policy MT-1A. Objection number three of the ORC report related to consistency between elements and internal consistency in the prioritization of capital improvements by geographic area. In response, RER has deleted the proposed new Policy CIE-3D, and revised Policy CIE-5A, Traffic Circulation subelement policy TC-4C and Land Use Policy LU-2B. These changes to the CIE policies are outlined above; changes to policy TC-4C are located in Application 2 for the Transportation Element; and changes to Policy LU-2B can be found in Application 1 for the Land Use Element.