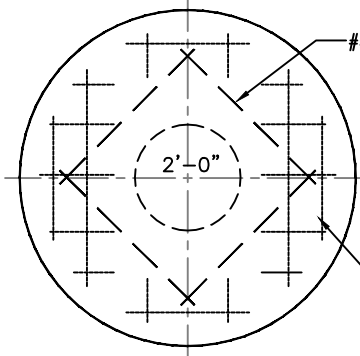
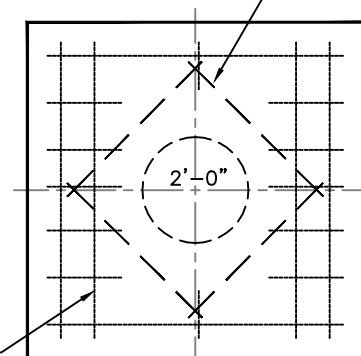


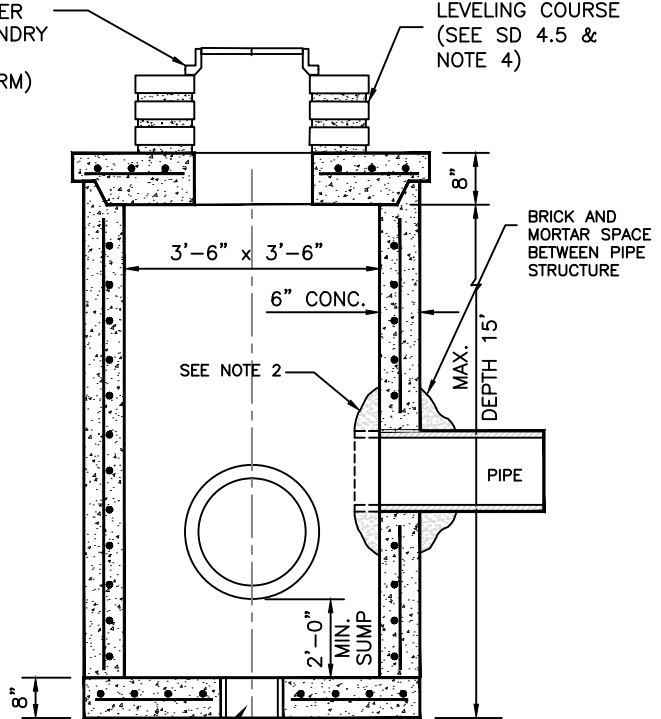
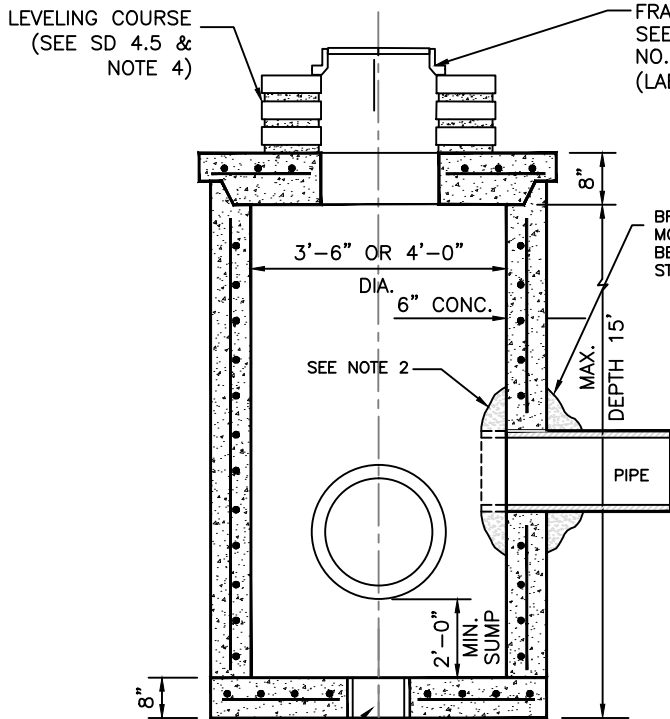
P-7T



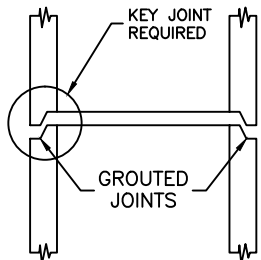
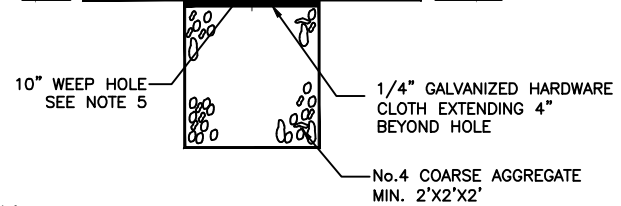
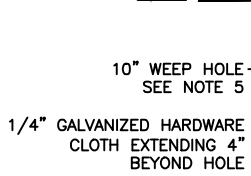
ROUND TOP



SQUARE TOP



SECTION



CONSTRUCTION JOINT (OPTIONAL)

NOTES:

- 1.- CAST TOP SLAB TO FIT WALL USED.
- 2.- PIPES MAY EXTEND INTO CATCH BASIN A MAXIMUM OF 4".
- 3.- USE 4,000 psi CONCRETE. (MINIMUM), MAXIMUM W/C=0.53, GRADE 60 STEEL FOR REBAR AND GRADE 65 FOR WWF.
- 4.- A SMOOTH LINE OF MORTAR 1/2" THICK INSIDE AND OUTSIDE.
- 5.- WEEP HOLES ARE TO BE USED WHEN THE YEARLY LOWEST WATER ELEVATION IS ABOVE THE TOP OF THE BOTTOM SLAB OF THE STRUCTURE.

MIAMI-DADE COUNTY DEPARTMENT OF TRANSPORTATION AND PUBLIC WORKS	APPROVED 5/8/2018	REVISED 5/8/2018	STANDARD STORM DRAINAGE DETAIL MANHOLE AND INLET (TYPE P)	SD 2.7 SHEET 1 OF 4
--------------------------------------------------------------------	----------------------	---------------------	-----------------------------------------------------------------	---------------------------