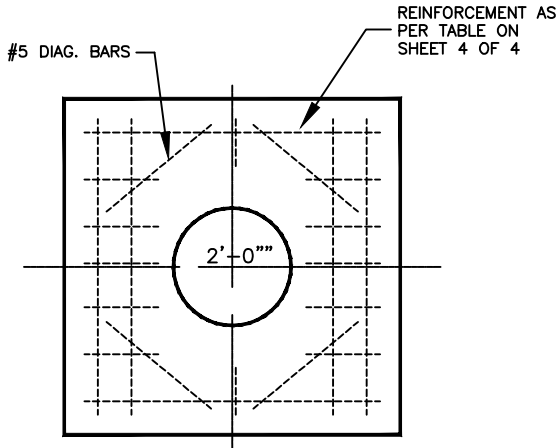
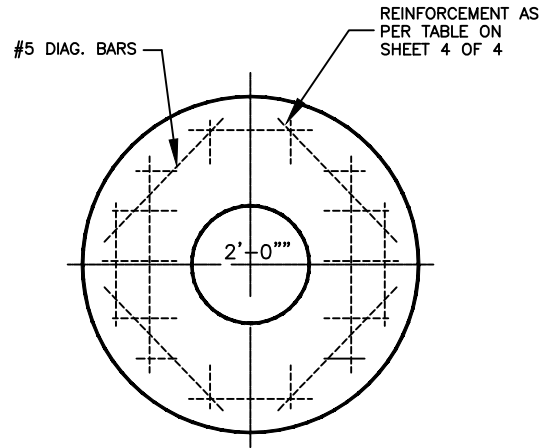


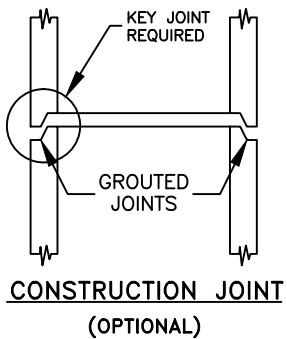
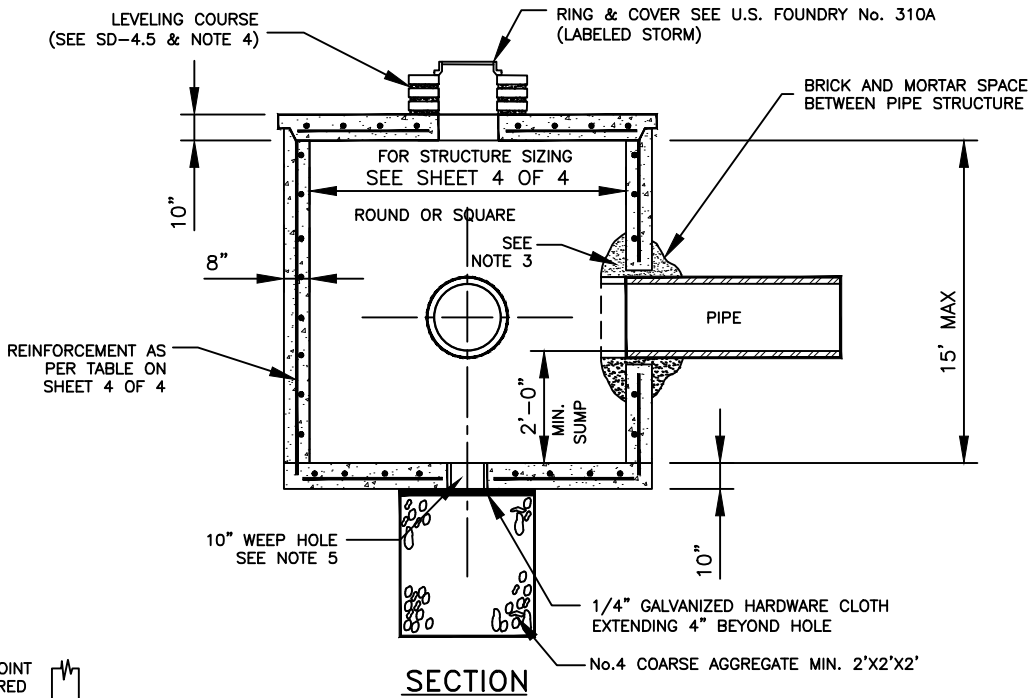
# J-7T



**SQUARE TOP**



**ROUND TOP**



**NOTES:**

- 1.- CAST TOP SLAB TO FIT WALL USED.
- 2.- USE 4,000 psi CONCRETE. (MINIMUM), MAXIMUM W/C=0.53, GRADE 60 STEEL FOR REBAR AND GRADE 65 FOR WWF.
- 3.- PIPES MAY EXTEND INTO CATCH BASIN A MAXIMUM OF 4".
- 4.- APPLY A SMOOTH LINE OF MORTAR 1/2" THICK INSIDE AND OUTSIDE.
- 5.- WEEP HOLES ARE TO BE USED WHEN THE YEARLY LOWEST WATER ELEVATION IS ABOVE THE TOP OF THE BOTTOM SLAB OF THE STRUCTURE.

MIAMI-DADE COUNTY DEPARTMENT OF TRANSPORTATION AND PUBLIC WORKS	APPROVED 5/8/2018	REVISED 5/8/2018 9/16/2013 9/26/2012 8/3/2011	STANDARD STORM DRAINAGE DETAIL MANHOLE AND INLET (TYPE J)	SD 2.6 SHEET 1 OF 4
--	----------------------	---	---	---------------------------