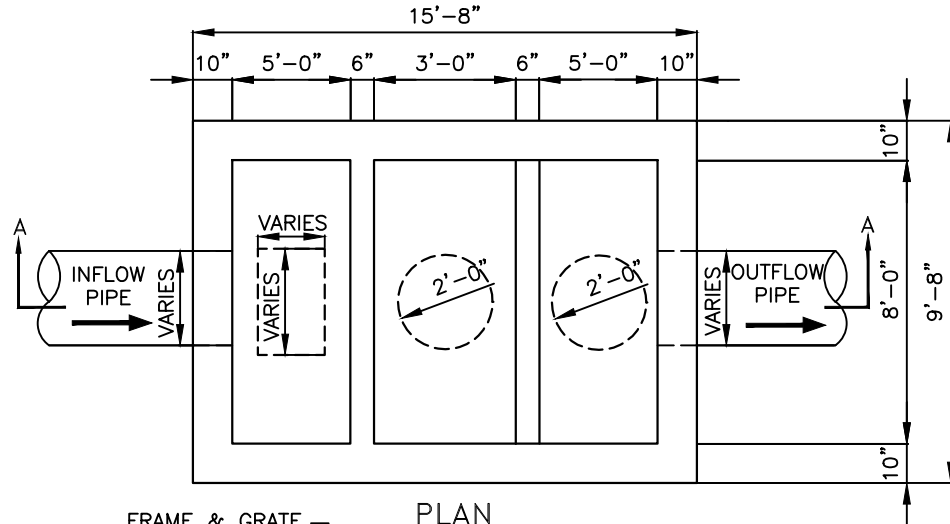
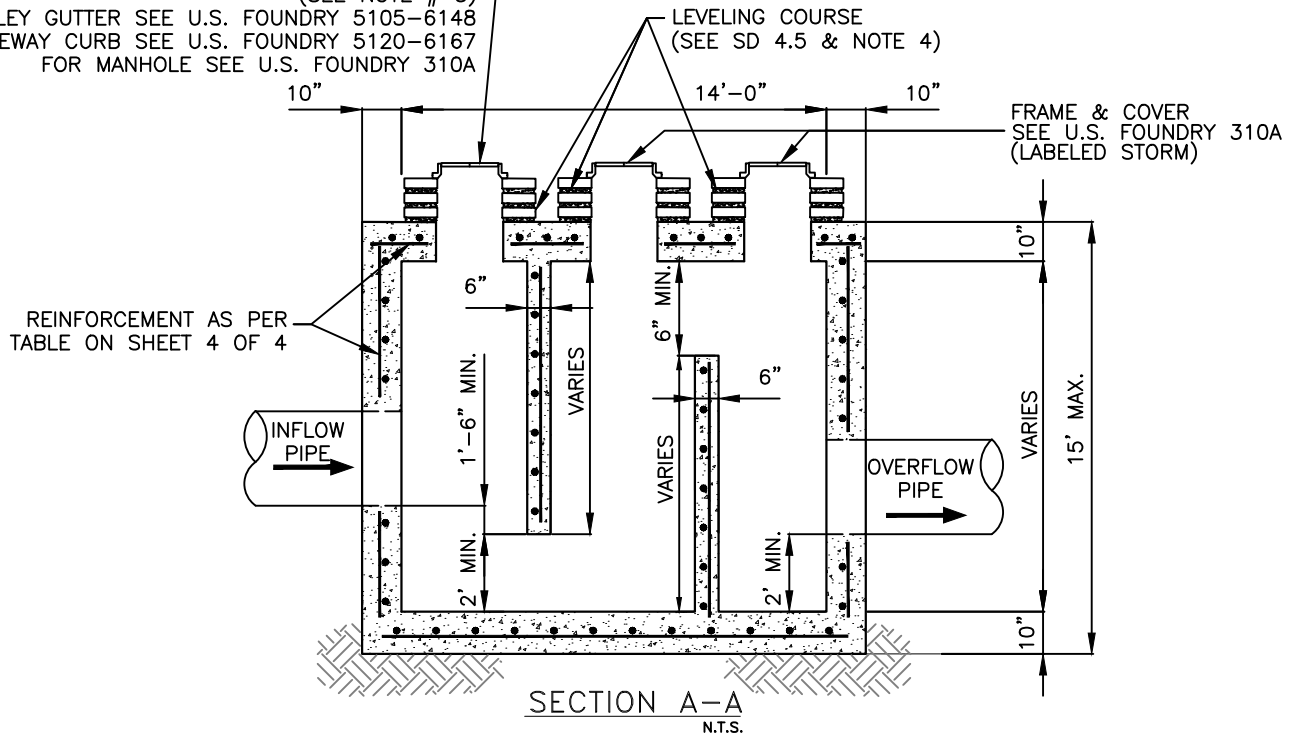


THREE CHAMBERS (3C)



PLAN
N.T.S.

FRAME & GRATE
 FOR SWALE AREAS SEE U.S. FOUNDRY 4700-6223
 FOR CURB & GUTTER SEE U.S. FOUNDRY 5129-6176
 (SEE NOTE # 5)
 FOR VALLEY GUTTER SEE U.S. FOUNDRY 5105-6148
 FOR DRIVEWAY CURB SEE U.S. FOUNDRY 5120-6167
 FOR MANHOLE SEE U.S. FOUNDRY 310A



SECTION A-A
N.T.S.

NOTES:

- 1.- CAST TOP SLAB TO FIT WALL USED.
- 2.- PIPES MAY EXTEND INTO CATCH BASIN A MAXIMUM OF 4".
- 3.- USE 4,000 psi CONCRETE. (MINIMUM), MAXIMUM W/C=0.53, GRADE 60 STEEL FOR REBAR AND GRADE 65 FOR WWF.
- 4.- A SMOOTH LINE OF MORTAR 1/2" THICK INSIDE AND OUTSIDE.
- 5.- USF 5129-6176 MAY ONLY USED WHEN STRUCTURES ARE TO BE PLACED WITHIN THE RADIUS OF A CORNER AND ITS USE MUST BE APPROVED BY THE DEPARTMENT. THE USE OF THIS FRAME AND GRATE IS NOT INTENDED TO REPLACE STANDARD CURB INLET TOPS. FOR CURB INLETS PLEASE REFER TO FDOT DESIGN STANDARDS INDEX 210 AND 211. INSTALLATION IN OTHER LOCATIONS IS NOT PERMITTED UNLESS APPROVED BY THE DEPARTMENT AS A RESULT OF MITIGATING CIRCUMSTANCES.

MIAMI-DADE COUNTY DEPARTMENT OF TRANSPORTATION AND PUBLIC WORKS	APPROVED 5/8/2018	REVISED 5/8/2018 9/27/2012 _____ _____ _____	STANDARD STORM DRAINAGE DETAIL POLLUTION CONTROL STRUCTURE	SD 5.2 SHEET 1 OF 4
---	--------------------------	---	---	-------------------------------