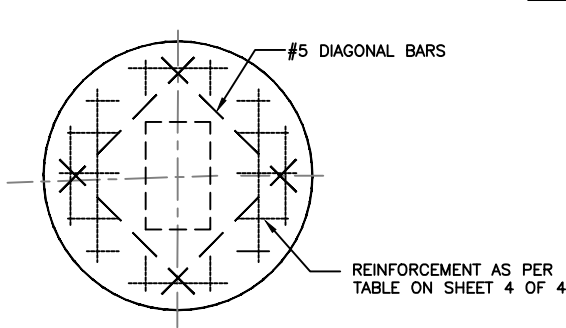
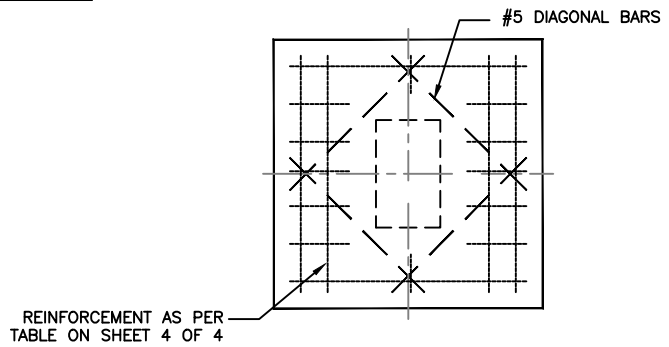


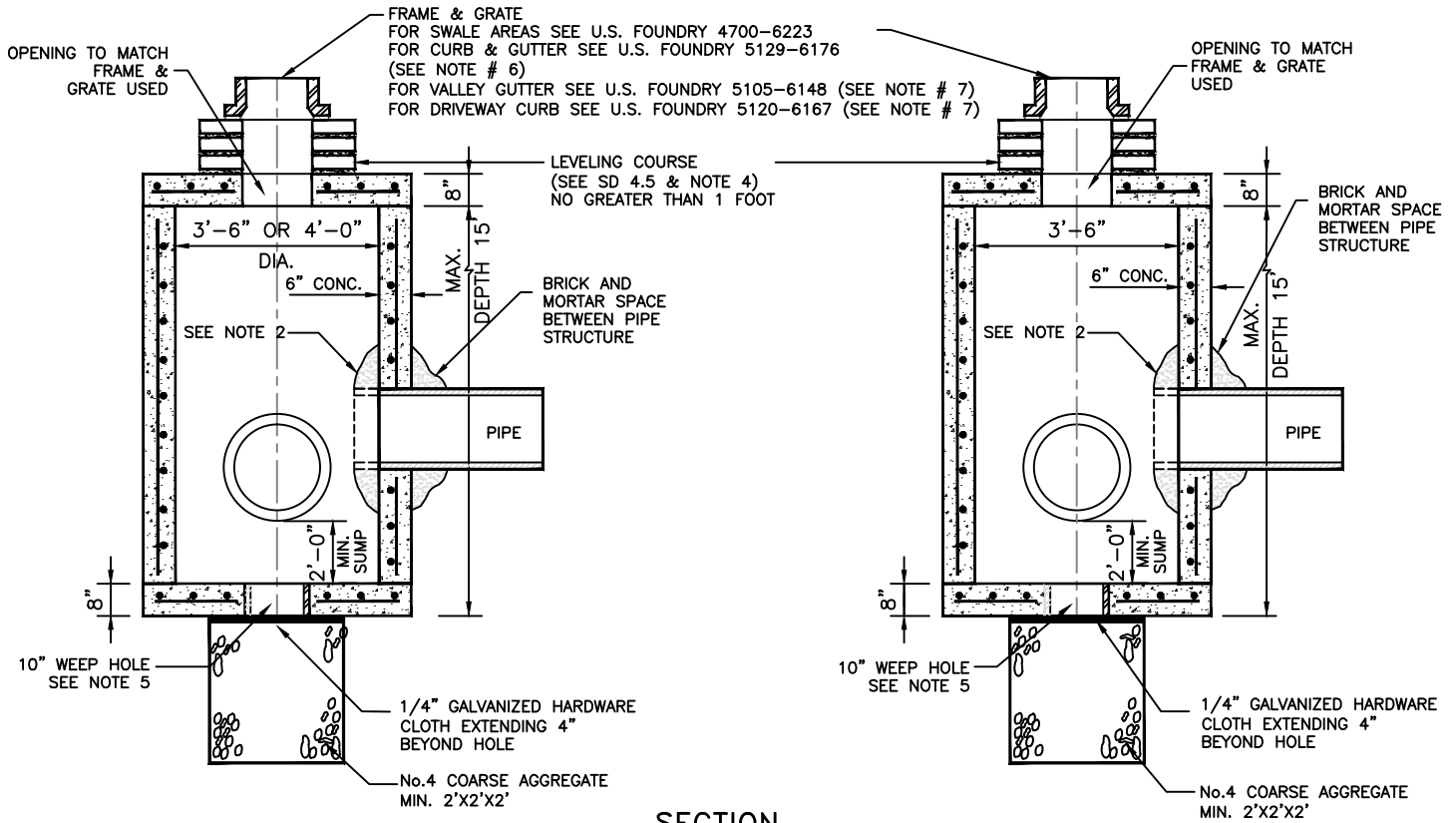
P-10M



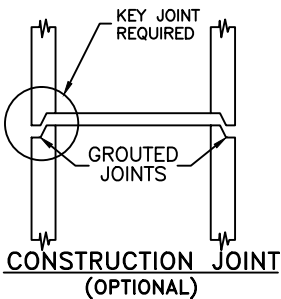
**ROUND TOP**



**SQUARE TOP**



**SECTION**



**NOTES:**

- 1.- CAST TOP SLAB TO FIT WALL USED.
- 2.- PIPES MAY EXTEND INTO CATCH BASIN A MAXIMUM OF 4".
- 3.- USE 4,000 psi CONCRETE. (MINIMUM), MAXIMUM W/C=0.53, GRADE 60 STEEL FOR REBAR AND GRADE 65 FOR WWF.
- 4.- A SMOOTH LINE OF MORTAR 1/2" THICK INSIDE AND OUTSIDE.
- 5.- WEEP HOLES ARE TO BE USED WHEN THE YEARLY LOWEST WATER ELEVATION IS ABOVE THE TOP OF THE BOTTOM SLAB OF THE STRUCTURE.
- 6.- USF 5129-6176 MAY ONLY BE USED WHEN STRUCTURES ARE TO BE PLACED WITHIN THE RADIUS OF A CORNER AND ITS USE MUST BE APPROVED BY THE DEPARTMENT. THE USE OF THIS FRAME AND GRATE IS NOT INTENDED TO REPLACE STANDARD CURB INLET TOPS. FOR CURB INLETS PLEASE REFER TO FDOT DESIGN STANDARDS INDEX 210 AND 211. INSTALLATION IN OTHER LOCATIONS IS NOT PERMITTED UNLESS APPROVED BY THE DEPARTMENT AS A RESULT OF MITIGATING CIRCUMSTANCES.

<p>MIAMI-DADE COUNTY</p> <p>DEPARTMENT OF TRANSPORTATION AND PUBLIC WORKS</p>	<p>APPROVED</p> <p>5/8/2018</p>	<p>REVISED</p> <p>5/8/2018</p> <p>_____</p> <p>_____</p> <p>_____</p>	<p>STANDARD STORM DRAINAGE DETAIL</p> <p>MANHOLE AND INLET</p> <p>(TYPE P)</p>	<p>SD</p> <p>2.7</p> <p>SHEET 2 OF 4</p>
---	---------------------------------	---	--	--