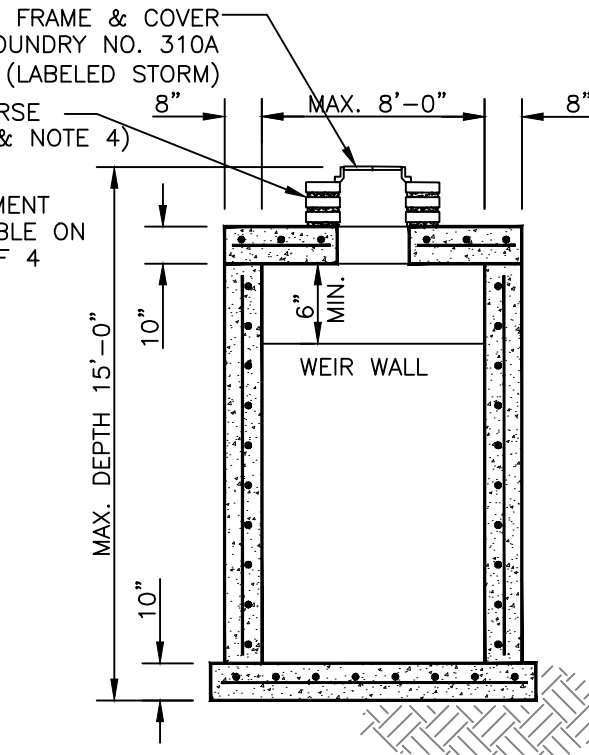
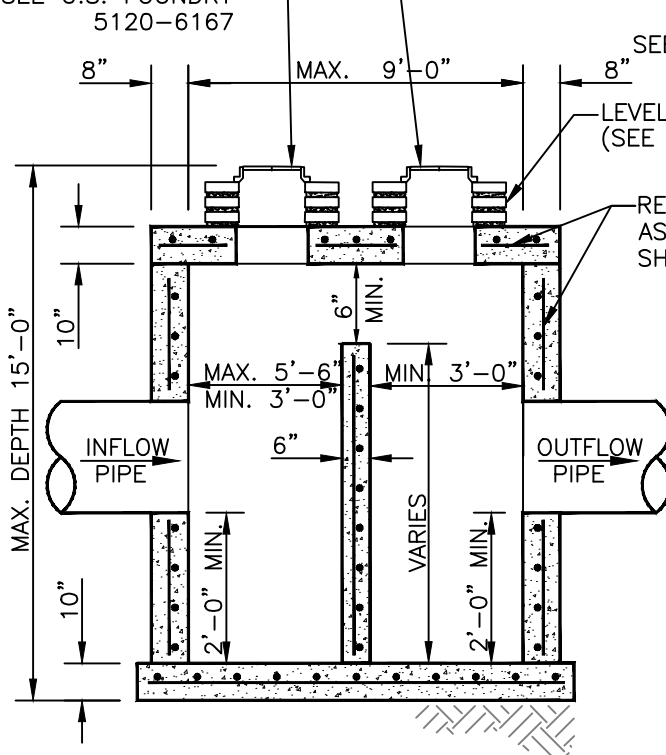
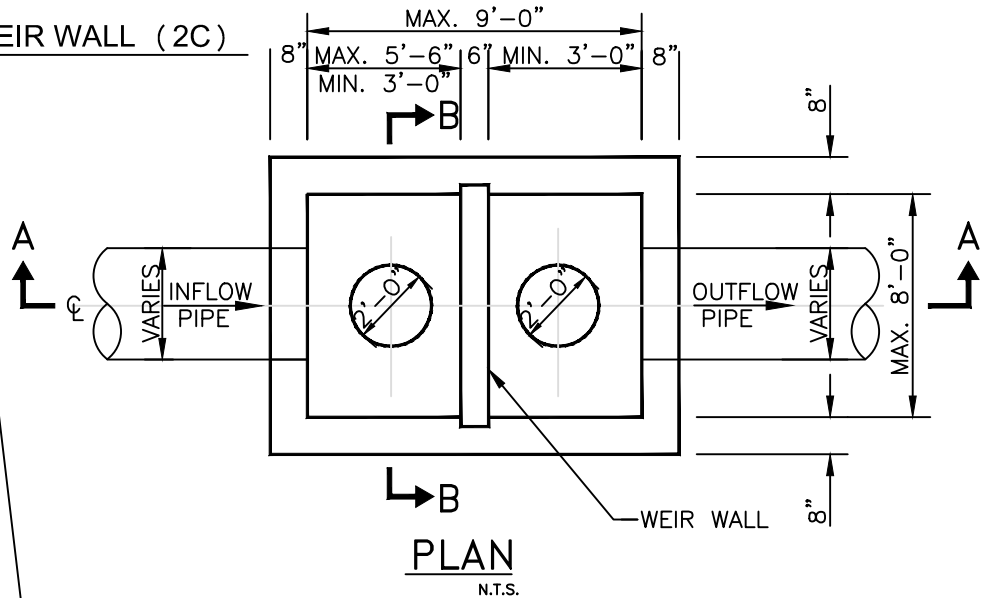


TWO CHAMBERS WITH A WEIR WALL (2C)

FRAME & COVER
SEE U.S.
FOUNDRY NO. 310A
(LABELED STORM)

FRAME & GRATE
FOR SWALE AREAS SEE
U.S. FOUNDRY
4700-6223
FOR CURB & GUTTER
SEE U.S. FOUNDRY
5129-6176
(SEE NOTE # 5)
FOR VALLEY GUTTER
SEE U.S. FOUNDRY
5105-6148
FOR DRIVEWAY CURB
SEE U.S. FOUNDRY
5120-6167



NOTES:

- 1.-CAST TOP SLAB TO FIT WALL USED.
- 2.-PIPES MAY EXTEND INTO CATCH BASIN A MAXIMUM OF 4".
- 3.- USE 4,000 psi CONCRETE. (MINIMUM), MAXIMUM W/C=0.53, GRADE 60 STEEL FOR REBAR AND GRADE 65 FOR WWF.
- 4.-A SMOOTH LINE OF MORTAR 1/2" THICK INSIDE AND OUTSIDE.
- 5.-IF USING THE FIRST CHAMBER AS AN INLET, A BAFFLE IS REQUIRED BEFORE THE FINAL OUTLET POINT.

<p>MIAMI-DADE COUNTY DEPARTMENT OF TRANSPORTATION AND PUBLIC WORKS</p>	<p>APPROVED 5/8/2018</p>	<p>REVISED 5/8/2018 6/18/2014 9/27/2012</p>	<p>STANDARD STORM DRAINAGE DETAIL POLLUTION CONTROL STRUCTURE</p>	<p>SD 5.2 SHEET 2 OF 4</p>
--	------------------------------	---	---	------------------------------------