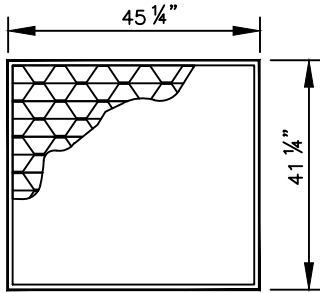


# J-10



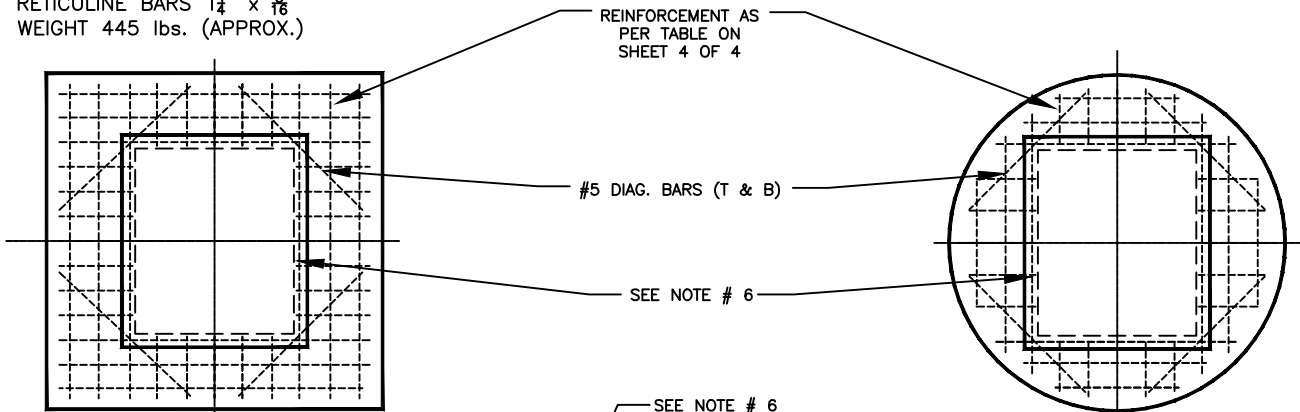
**NOTE:**

ANY GRATING THAT IS CAPABLE OF SUPPORTING H-20 LOADS MAY BE SUBSTITUTED FOR THE USF No. 6646 UPON APPROVAL BY THE DEPARTMENT PROVIDED IT MEETS THE FOLLOWING TWO CONDITIONS:

- 1- THE NET OPEN AREA OF THE GRATE MUST NOT BE LESS THAN THAT OF THE USF No. 6646.
- 2- THE MAXIMUM DISTANCE (MEASURED PERPENDICULAR) BETWEEN BARS DOES NOT EXCEED 3".
- 3- MANUFACTURER MUST BE LISTED IN FDOT'S QPL.

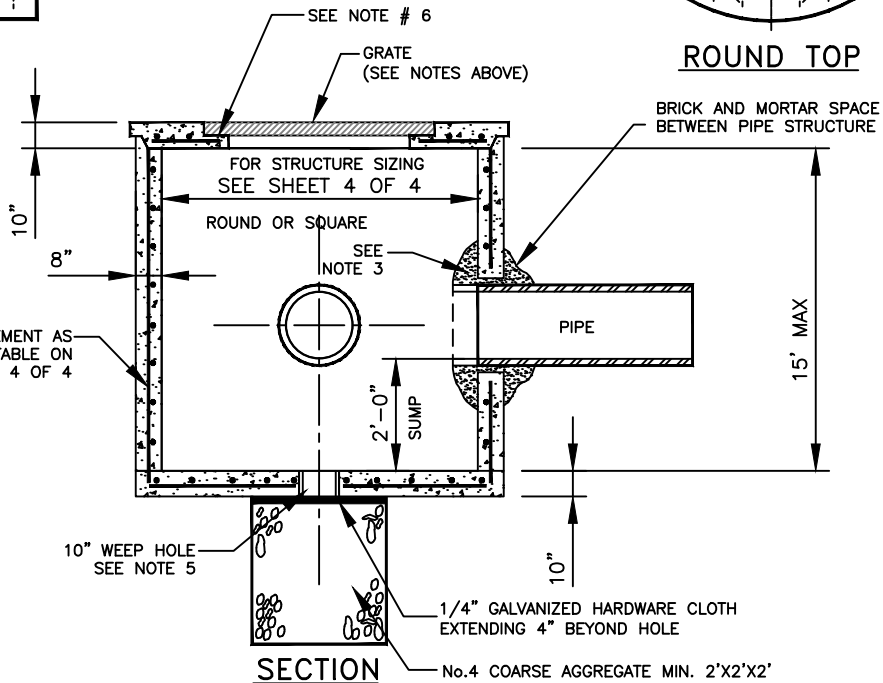
**STEEL GRATING**

U.S. FOUNDRY NO. 6646 GRATE (or EQUAL)  
 STRAIGHT BARS 6" x 1/4"  
 RETICULINE BARS 1 1/4" x 3/16"  
 WEIGHT 445 lbs. (APPROX.)

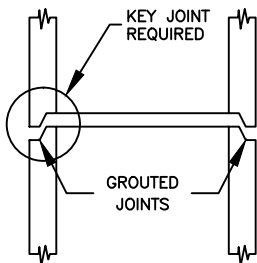


**SQUARE TOP**

**ROUND TOP**



**SECTION**



**CONSTRUCTION JOINT (OPTIONAL)**

**NOTES:**

- 1- CAST TOP SLAB TO FIT WALL USED.
- 2- USE 4,000 psi CONCRETE (MINIMUM). MAXIMUM W/C=0.53 GRADE 60 STEEL FOR REBAR AND 65 FOR WWF.
- 3- PIPES MAY EXTEND INTO CATCH BASIN A MAXIMUM OF 4".
- 4- APPLY A SMOOTH LINE OF MORTAR 1/2" THICK INSIDE AND OUTSIDE.
- 5- WEEP HOLES ARE TO BE USED WHEN THE YEARLY LOWEST WATER ELEVATION IS ABOVE THE TOP OF THE BOTTOM SLAB OF THE STRUCTURE.
- 6- GRATE TO BE SUPPORTED ON ALL SIDES.
- 7- STRUCTURE IS NOT TO BE USED IN HEAVY TRAFFIC AREAS OR WHERE THEY WOULD BE SUBJECTED TO CONSTANT LOADING SUCH AS DRIVEWAY APPROACHES.

MIAMI-DADE COUNTY DEPARTMENT OF TRANSPORTATION AND PUBLIC WORKS	APPROVED 5/8/2018	REVISED 5/8/2018 9/16/2013 9/26/2012 8/3/2011	STANDARD STORM DRAINAGE DETAIL MANHOLE AND INLET (TYPE J)	SD 2.6 SHEET 3 OF 4
--	----------------------	---	---	---------------------------