



Enabling Delivery of Government Evolution

Business Leadership Council

Finance & Supply Chain Management

July 31, 2019



Enabling Delivery of Government Evolution

Welcome

Agenda

- Discussion Items for today:
 - *PeopleSoft & Infor EAMS Integration*
- What's coming next? (*Note: these are the future topics*)
 - *Pool Process*
 - *Supplier Contracts*
 - *Workflow Design*
 - *Purchase Orders*
 - *Conversion*

Integrations for Non-Inventory Modules

* Blue box indicate System of Record

PeopleSoft

Asset Management*

- Creation
- Capitalization
- Depreciation
- Adjustment
- Retirement
- Physical Inventory

Project Costing*

- Project/Activity Structure
- Project Expenditures
 - Payroll
 - Inventory

Master Data*

- Chart of Accounts
- Employee Data

Infor - EAMS

Asset Maintenance*

Work Order Management*

Master Data

INT-AM-017 – New Assets

INT-AM-016 – Asset Adjustments and Disposals

INT-PC-021 – Project/Work Orders

INT-PC-102 – Project Expenditures

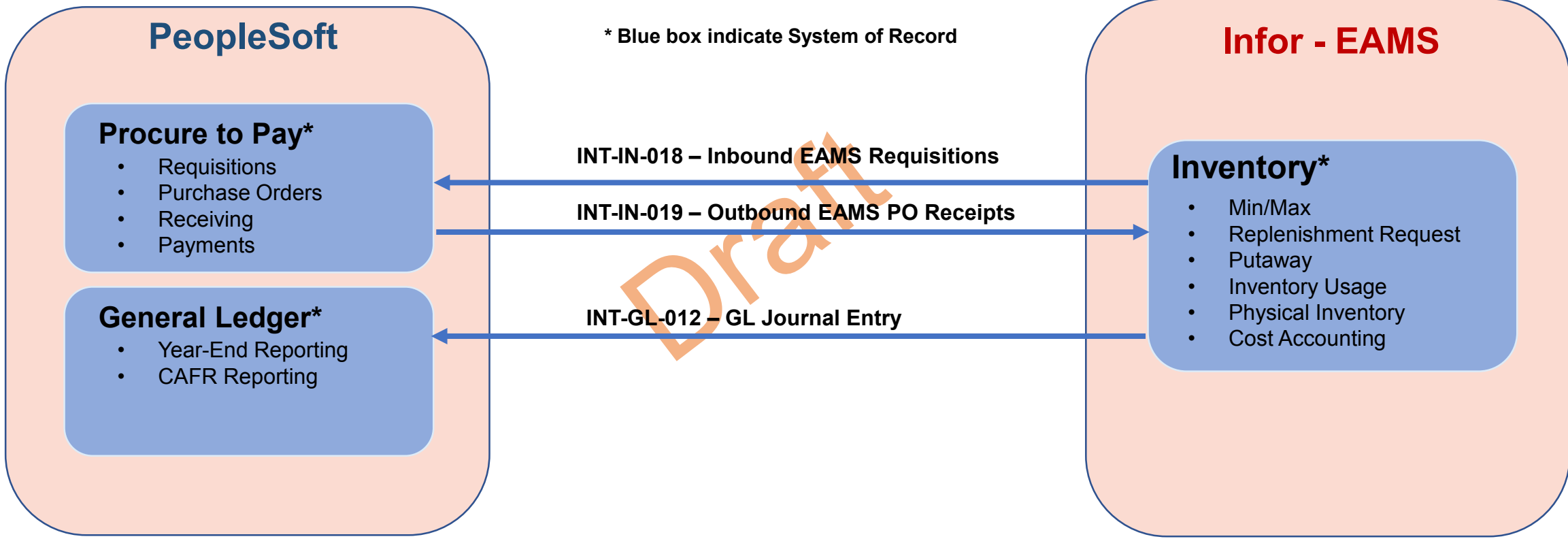
INT-GL-026 – Outbound COA

TBD – Outbound Employee Data

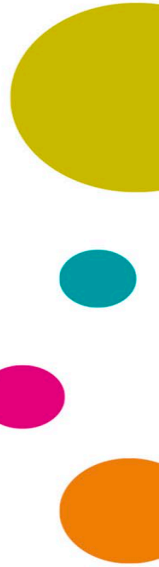
INT-IN-201 – Inventory Item Data

Draft

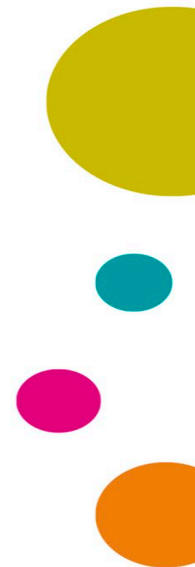
Integrations for Inventory Module (EAMS Items)



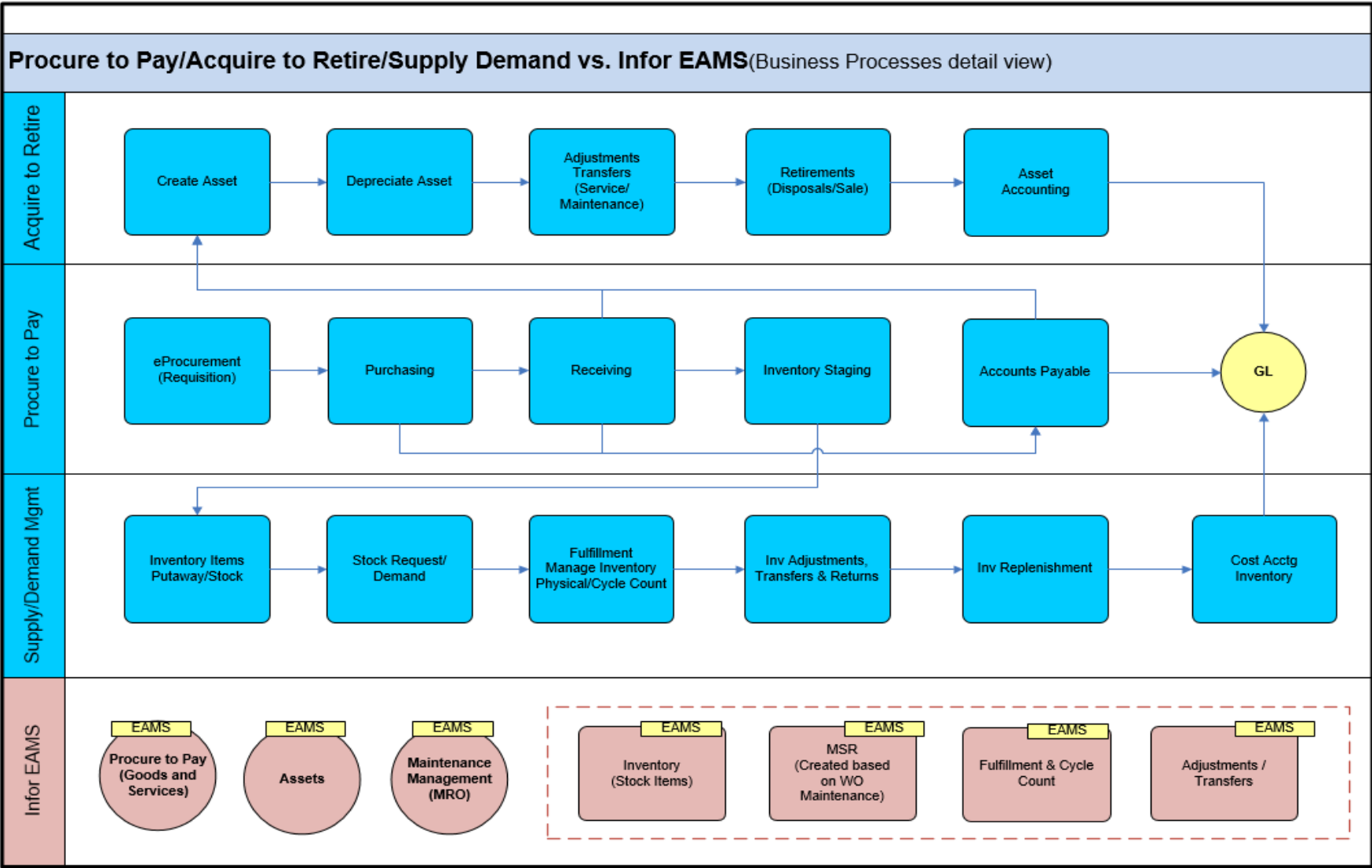
Questions



Appendix



Business Processes - Detail



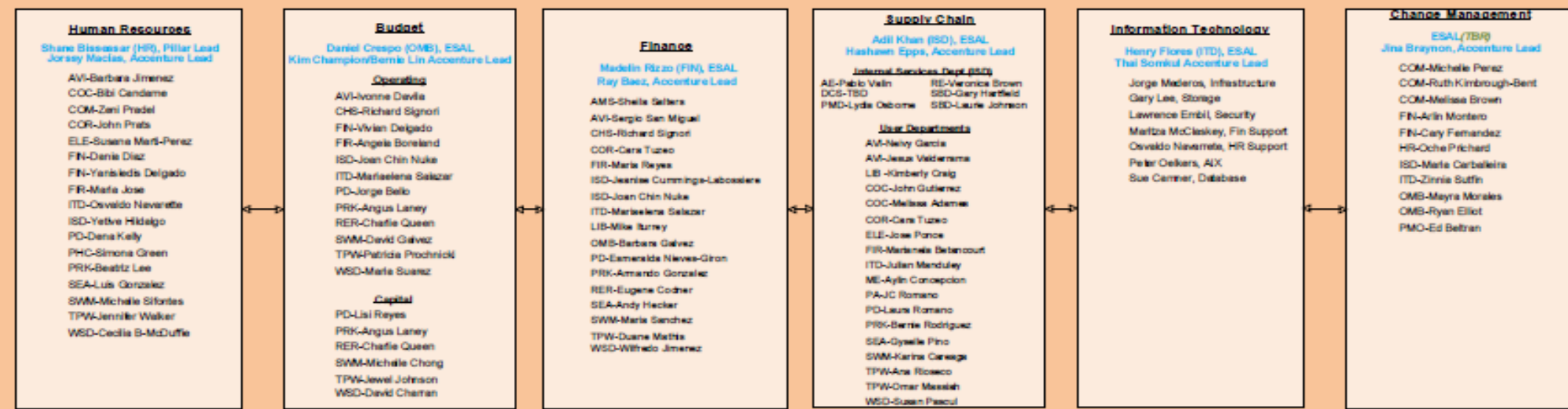
Miami-Dade County ERP Governance Structure

Revised 05/23/2019

Notes: TBA – To be Assigned
TBD – To be Determined
TBR – To be Recruited
SME – Subject Matter Expert



BUSINESS-STRATEGIC AREA LEADERSHIP COUNCILS



The BLC members role is that of guidance and decision making for the specific county department under the umbrella of the particular Strategic Area (i.e. OMB, FIN, HR, etc). This panel will provide guidance to the Module Team members that are responsible for the day to day project activities that pertain to a specific Module. In addition, the BLC members will participate in the Change Management development and be involved with testing phases.