

## 2.0 Miami-Dade Transit System Overview

Miami-Dade Transit operates the 14<sup>th</sup> largest transit system in the United States and is the largest transit system in the State of Florida. MDT is one of the largest departments in Miami-Dade County government. MDT operates four (4) transit modes of service: bus (Metrobus), heavy rail (Metrorail), automated guideway (Metromover), and demand-response service (Special Transportation Services or STS).

Together these modes comprise an integrated multi-modal transit system for Miami-Dade County and record more than 326,000 daily (weekday) boardings on the MDT system while STS daily average is approximately 5,300. Table 2-1 presents MDT service characteristics by transit mode. The MDT Table of Organization is found in Figure 2-1 and Figure 2-2 presents the current MDT service area coverage map.

**Table 2-1: MDT Service Characteristics by Transit Mode, 2009**

<b>System Characteristics</b>	<b>Metrobus</b>	<b>Metrorail</b>	<b>Metromover</b>	<b>STS</b>
Operating Hours	24 hours <sup>1</sup>	5:00am - 12:00am	5:00am - 12:20am	24 hours
Number of Routes	93 <sup>2</sup>	1	3	Demand Response
No. of Stations/Stops	8,943	22	20	N/A
Peak Headways	7½ - 60 minutes	7½ minutes	1½ - 3 minutes	(Pick up +/-30 minutes of scheduled time)
Midday Headways	12 - 60 minutes	15 minutes	1½ - 3 minutes	
Weekend Headways	12 - 60 minutes	30 minutes	1½ - 3 minutes	
Routes Miles	2,615 round trip miles	22.4 miles	4.4 miles	N/A
Peak Vehicle Requirements	680	84	21	276
Total Fleet Size (Section 15 Report)	816 (741 full-size/ 75 minibus)	136	29	355 (176 sedans, 70 vans, 109 lift equipped vans)
Annual Revenue Miles	29,189,472	6,743,641	1,126,255	13,084,419
Annual Boardings	75,608,000	18,244,476	8,100,144	1,491,924
Park-Ride Spaces	2,671	9,658	0	N/A
Annual Operating Expenses	\$334,727,320	\$78,399,299	\$23,265,217	\$44,522,040
Annual Operating Revenues	\$78,370,758	\$15,646,396	\$0	\$6,958,585
Annual Revenues (Other) <sup>3</sup>	\$8,052,752	\$0	\$0	N/A
Base Fare	\$2.00	\$2.00	Free	\$3.00

Source: National Transit Database, Miami-Dade Transit, April 2010

<sup>1</sup> Seven Metrobus routes (L, S, 3, 11, 27, 38/Busway MAX, 77) operate 24 hours per day. Two other routes, 246/Night Owl and 500/Midnight Owl, provide hourly bus service approximately between 12:00 am - 5:30 am.

<sup>2</sup> 91 Metrobus operated routes plus two contracted routes.

<sup>3</sup> All transit revenues derived from advertising and concessions are reported here (including Metrorail/Metromover).

Figure 2-1: MDT Table of Organization

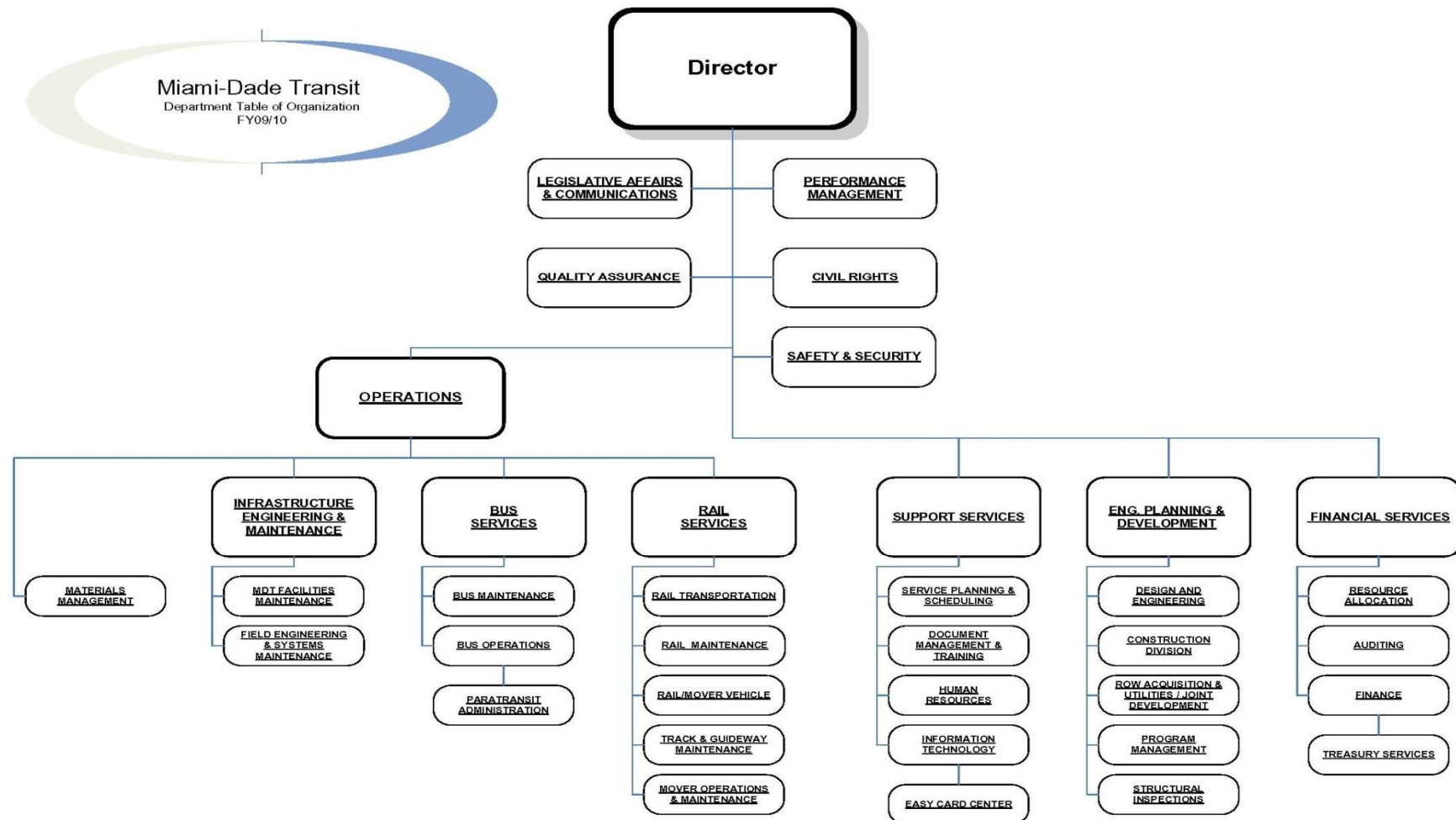
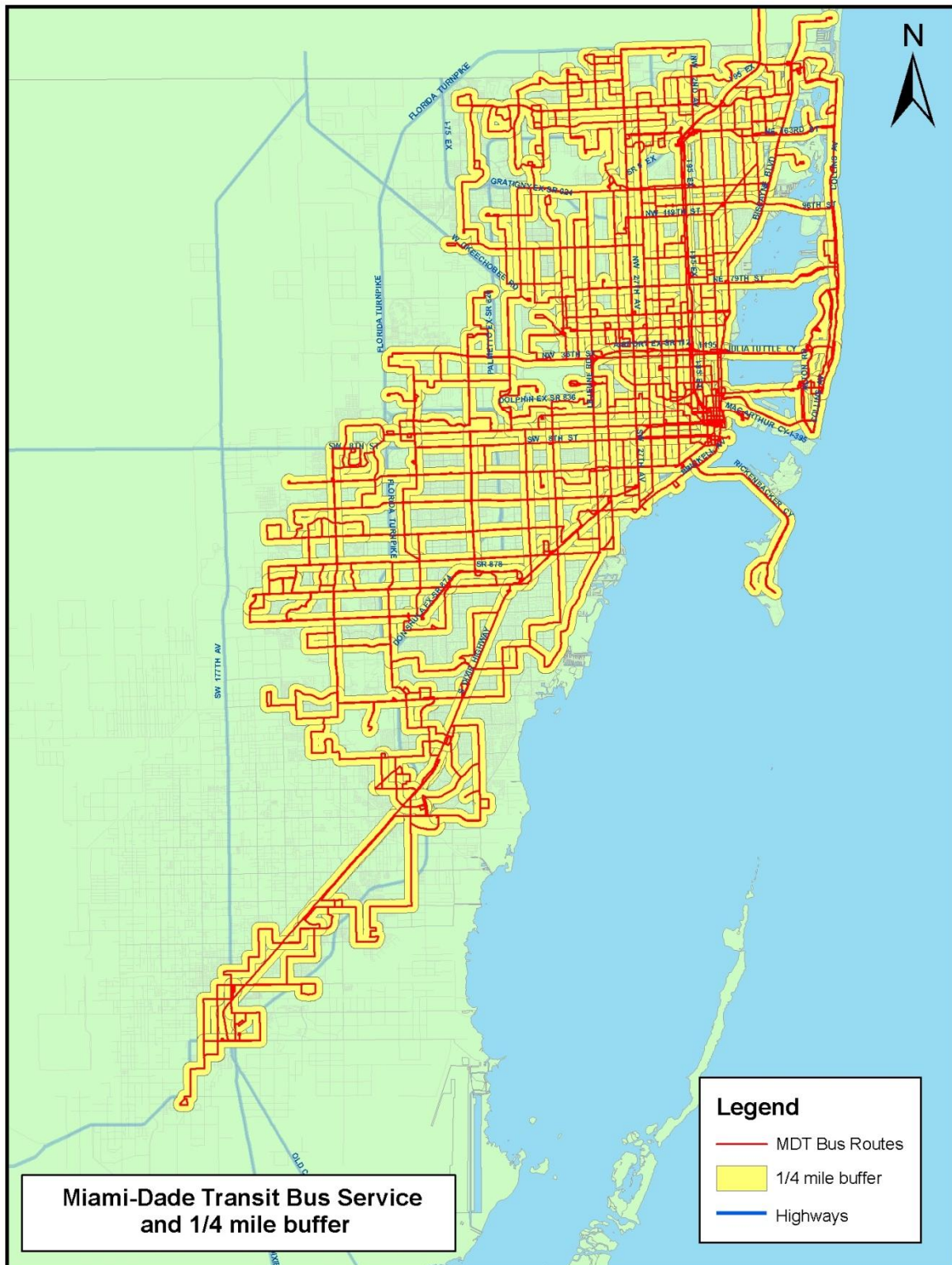


Figure 2-2: MDT Service Area Coverage Map



## 2.1 Metrobus

Metrobus is a fixed route bus service that MDT operates seven (7) days a week, twenty-four hours per day. A total of ninety-one (91) routes comprise MDT's regular bus service structure as served by a total fleet of 816 buses and two (2) contracted routes with seven (7) buses. Figure 2-3 illustrates the MDT Metrobus system route map as of December 2009.

## 2.2 Metrorail

Metrorail provides service to 22 stations on a 22.4-mile heavy rail electrified line. The Metrorail system operates primarily on elevated structure and interfaces with two other passenger rail systems at the Tri-Rail (Commuter Rail), Brickell and Government Center Stations (Metromover). MDT maintains a total fleet of 136 Metrorail vehicles. Metrorail currently operates weekday service between 5:00 a.m. and 12:00 a.m. (total trip time is 48 minutes from terminus to terminus) with 7½-minute AM/PM peak headways, and 15 minutes during the midday and 30 minutes during evening hours. Weekend and holiday service operates with headways of 30 minutes. Figure 2-4 illustrates the MDT Metrorail system route map as of December 2009.

## 2.3 Metromover

The MDT Automated People-Mover system (APM) or Metromover includes an elevated system that services 21 stations to include the downtown Miami core area (Downtown Loop), the Adrienne Arsht Center in the north (Omni Loop); and the Brickell area to the south (Brickell Loop). MDT maintains a fleet of 29 Metromover vehicles. Metromover operates free of charge and stops at 21 wheelchair-accessible stations from the School Board area to Brickell, serving major destination throughout Downtown Miami. Metromover's inner and outer loops operate from 5:00 a.m. to 12:20 a.m., seven days a week. During the AM/PM peak period, service frequency is every 90 seconds, and every 3 minutes during the off-peak hours, as well as weekends and holidays. Figure 2-5 illustrates the MDT Metromover system route map as of December 2009.

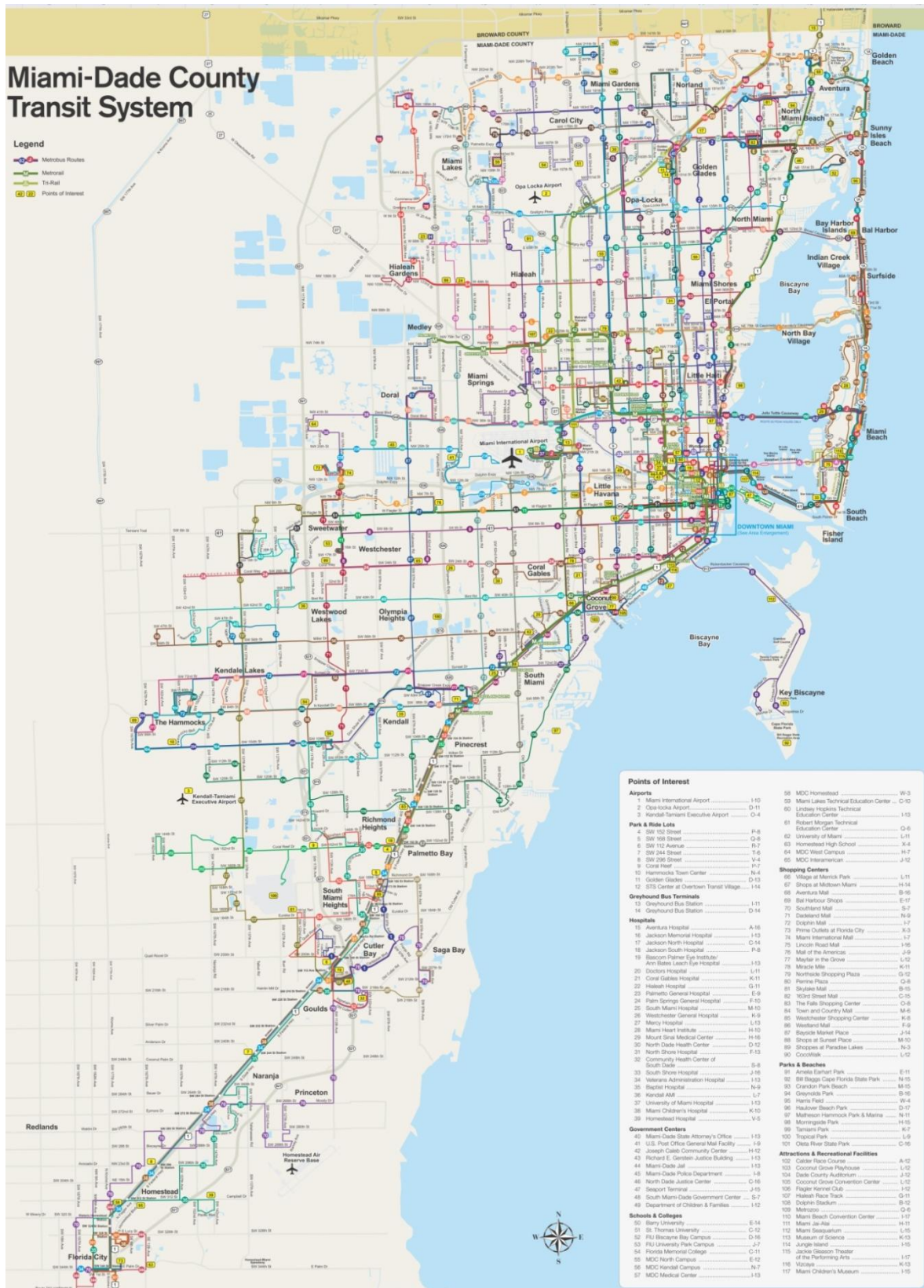
## 2.4 Special Transportation Services

MDT also operates a demand-response service known as Special Transportation Service (STS). STS is a shared-ride, door-to-door transportation service for qualified individuals with disabilities who are unable to utilize the accessible fixed-route transit system. Service is provided by sedans, vans and lift-equipped vehicles, seven days a week, 24 hours per day.

Presently, there are 355 vehicles (sedans, standard vans, minivans, and wheelchair lift-equipped vans) available for ambulatory transportation. Currently, these vehicles are privately contracted. There are more than 25,456 eligible clients enrolled in the STS program including both ambulatory and non-ambulatory clients.



**Figure 2-3: MDT Metrobus Route Map**



**Figure 2-4: MDT Metrorail System 2010**



Source: Miami-Dade Transit, 2010

The map illustrates the Miami transit network, featuring four main loops: the Omni Loop (dark blue), Brickell Loop (pink), Downtown Loop (orange), and Metrorail (green). The Omni Loop runs north-south through the city, connecting stations from School Station in the north to Financial District Station in the south. The Brickell Loop is a circular route in the southern part of the city, connecting Brickell Station to Financial District Station. The Downtown Loop is a circular route in the central part of the city, connecting Government Center Station to Knight Center Station. The Metrorail line runs along the western edge of the city, connecting Government Center Station to Brickell Station. The map also shows various transfer stations, including Government Center Station, Brickell Station, and Financial District Station. A legend in the bottom right corner identifies the loops, transfer stations, and stations featuring art en route.

**Legend:**

- Omni Loop
- Brickell Loop
- Downtown Loop
- Metrorail
- Last Transfer Station to Omni Loop
- Last Transfer Station to Brickell Loop
- Transfer Station between Omni, Downtown, and Brickell Loops
- Transfer Station to Metrorail
- Station featuring Art En Route

## 2.5 Miami-Dade Transit Passenger Fare Structure

In June 2009, MDT transitioned to a new passenger fare collection system which no longer accepts tokens or currency as fare payment for Metrorail known as the EASY Card. The EASY Card is an automated fare collection system and the first of its kind in the State of Florida. Additionally, cash fare payments may also be made on Metrobus. MDT passengers are now



required to load the contactless MDT EASY Card. These cards are purchased at a fee of \$2 and loaded with appropriate fare amounts for passage. Table 2-2 presents the current fare structure as of December 2009.

**Table 2-2: MDT Fare Structure Summary, December 2009**

	Regular Fare	Reduced Fare <sup>1</sup>
Metrobus	\$2	\$1
Express Bus	\$2.35	\$1.15
Shuttle Bus <sup>2</sup>	25¢	10¢
Metrorail	\$2	\$1
Metrorail daily parking fee	\$4	No Discount Available
Metrorail monthly parking permit	\$10 <sup>3</sup>	No Discount Available
Metromover	Free	Free
Special Transportation Service (STS)	\$3	No Discount Available
Bus-to-Bus Transfer	Free <sup>4</sup>	Free <sup>4</sup>
Bus-to-Express Bus Transfer	35¢ upgrade <sup>4</sup>	15¢ upgrade <sup>4</sup>
Bus-to-Rail Transfer	50¢ <sup>4</sup>	25¢ <sup>4</sup>
Rail-to-Bus Transfer	50¢ <sup>4</sup>	25¢ <sup>4</sup>
Shuttle Bus-to-Bus Transfer	\$1.75 upgrade <sup>4</sup>	90¢ upgrade <sup>4</sup>
Shuttle Bus-to-Express Bus Transfer	\$2.10 upgrade <sup>4</sup>	\$1.05 upgrade <sup>4</sup>
1-Month Pass	\$100	Not applicable
Discount 1-Month Pass	\$50	Not applicable
1-Month Pass - Group Discount 4-99 passes	\$90	Not applicable
1-Month Pass - Group Discount 100 or more passes	\$85	Not applicable
7-Day Pass	\$26	\$13
1-Day Pass	\$5	\$2.50
College/Adult Education Center Monthly Pass	\$50	Not applicable
Golden Passport or Patriot Passport	Free	Free

Source: Miami-Dade Transit, 2010

<sup>1</sup> Discount fare is available for Medicare recipients, most people with disabilities, and local students in grades 1-12 when using the EASY Card for discount-fare riders.

<sup>2</sup> 7 Shuttles: 123/South Beach Local, 211/Overtown Circulator, 212/Sweetwater Circulator, 248/Brickell Key Shuttle, 249/Coconut Grove Circulator, 254/Brownsville Circulator/ 286 North Point Circulator

<sup>3</sup> Only available with the purchase of a monthly pass.

<sup>4</sup> Transfer fee is free within 3 hours of first boarding up to two busses travelling in the same direction.