

CHAPTER 2

SYSTEM OVERVIEW



2 SYSTEM OVERVIEW

The Department of Transportation and Public Works (DTPW) is the 14th largest transit system in the United States (based on unlinked passenger trips and passenger miles), with a service area of approximately 306 square miles. It is composed of 34 individual municipalities with a county population of approximately 2.7 million. A trend persists in some areas throughout the county to incorporate, which leaves a large portion of the county populated by disadvantaged individuals in unincorporated areas that are dependent upon county services. DTPW is one of the largest departments in Miami-Dade County government and responsible for planning and providing public transit services in the County.

DTPW operates an integrated multi-modal transit system comprised of four (4) modes: bus (Metrobus), heavy rail (Metrorail), automated people-mover (APM) (Metromover), and demand-response service (Special Transportation Services or STS). The transit agency is led by a Department Director that reports to the Mayor. The table of organization for DTPW can be found in Appendix A.1.

Department of Transportation and Public Works Transit Mission Statement

Plan for, operate, and maintain a clean, safe, reliable, and convenient transportation system that effectively enhances mobility in Miami-Dade County.



In 2017, there were an average of 285,000 weekday boardings on the DTPW system. Table 2-1 presents DTPW service characteristics by transit mode.

Table 2-1: DTPW Service Characteristics by Transit Mode, 2017

System Characteristics	Metrobus			Metrorail	Metromover	STS
	DTPW Operated Routes	Contracted Routes (301 & 302)	14 Contracted Routes ⁴			
Operating Hours	24 hours ¹	5:10am-1:10am	12:00am - 5:06am, 5:41am - 8:17pm	5:00am-12:00am seven days a week	5:00am-12:00am seven days a week	24 hours
Number of Routes	79	2	14	2	3	Demand Resp.
No. of Stations/Stops	8,319	32 ²	893	23*	21*	N/A
Peak Headways	5-80 minutes	N/A	N/A	5-10 minutes**	1½ - 3 minutes	(Pick up +/-30 minutes of scheduled time)
Midday Headways	12 -70 minutes	N/A	N/A	15 minutes	1½ - 5 minutes	
Weekend Headways	12 -70 minutes	N/A	N/A	Orange Line: 15 minutes Green Line: 30 minutes	3-6 minutes	
Routes Miles	1,850 (Directional Route Miles)	142 (Directional Route Miles)	207	24.8 miles	4.4 miles	N/A
Peak Vehicle Requirements*	709	9	29	84	21	369
Total Fleet Size*	781	11	32	136	26	385
Annual Revenue Miles*	28,755,316	899,892	58,477	7,857,582	1,122,584	13,016,158
Annual Boardings*	58,000,998	345,784	37,004	19,984,735	9,463,403	1,633,236
Park-Ride Spaces	3,355	N/A	N/A	9,091	0	N/A
Annual Operating Expense*	\$363,156,856	\$7,588,950	\$238,694	\$101,483,951	\$28,675,295	\$50,311,740
Annual Operating Revenue*	\$70,367,510	\$398,692	\$13,161	\$16,120,089	\$0	\$5,877,893
Annual Revenues (Other)*	\$20,355,930 ³	\$0	\$0	\$0	\$0	N/A
Base Fare	\$2.25***	\$2.65***	\$2.25	\$2.25	Free	\$3.50
Transit Center	2	N/A	N/A	N/A	N/A	N/A
Pedestrian Overpasses	1	0	0	3	0	N/A
Maintenance/Storage Facilities	3	1	1	1	1	N/A

Table footnotes on next page



* Source: National Transit Database, Department of Transportation and Public Works, 1st Submission 2016 Data, January 31, 2018.

** 5-minute combined headway (Orange Line and Green Line) during the peak AM and PM travel times from Dadeland South Station to the Earlington Heights Station. The Green Line Metrorail Service operates at 10-minute headways during the peak AM and PM travel times between the Palmetto Station and the Dadeland South Station.

*** Express Bus fare for routes operating within the County is \$2.25; Routes that travel to other Counties (301 Dade-Monroe Express, 302 Card Sound Express, and four 95 Dade-Broward Express routes) remain at the current trip fare of \$2.65. Shuttle bus fare is \$0.25.

¹ Six (6) Metrobus routes (L, S, 3, 11, 27, 38/Busway MAX) operate 24 hours per day. Two other routes, 246/Night Owl and 500/Midnight Owl, provide hourly bus service approximately between 12:00 am - 5:30 am.

² In addition to the 32 designated bus stops for the two routes, buses pick up passengers anywhere along the routes when hailed.

³ Includes all modes.

⁴ Data for the 14 contracted routes is from late August to September 30, 2017 only.

2.1 Metrobus

Metrobus is DTPW's fixed-route bus service. Metrobus operates seven (7) days a week, 24 hours per day. A total of 79 routes comprise DTPW's regular bus service structure as served by a total fleet of 781 buses and 16 contracted routes with 43 buses. DTPW's family of Metrobus services include local, circulator, limited-stop and express. Figure 2-2 illustrates the DTPW Metrobus service area coverage while Figure 2-1 presents the Metrobus system route map. A detailed service schedule for current DTPW operated Metrobus routes is presented in Appendix A.2.

2.1.1 Local Service

Local bus service collects and distributes high-turnover ridership along arterials radiating to and from dense activity centers. This service type is characterized by frequent stops, short and moderate passenger trips, and comparatively low average bus speeds over the course of an entire route.



2.1.2 Circulator Service

Circulator or shuttle bus service operates short route connections between activity centers, or as a feeder to provide a connection with another transit service. For DTPW, these routes include the Tri-Rail commuter connection shuttles in Miami-Dade County and short localized area-specific routes.



2.1.3 Limited-Stop Service

Limited-stop service skips some stops and only serves designated high ridership bus stops along a route. With fewer stops, limited-stop routes have significantly increased operating speeds when compared to local service. MAX routes serve stops at major transfer points or approximately every one-half mile (in the Miami Central Business District (CBD)) to one mile (in suburban areas) along a route.

Route 277, the NW 7th Avenue MAX, is an example of a limited-stop type of bus service, which operates during the morning and evening rush hours.



2.1.4 Express Bus Service

Express Bus service is similar to limited-stop service which has fewer stops and operates at a higher speed when compared to local bus service. Express routes connect outlying areas (designated park-and-ride lots or shopping centers), with direct service to designated activity centers such as the Miami Central Business District (CBD). These routes usually operate along a freeway or major arterial road to increase the operating speed.

The 95 Dade-Broward Express Route that operates within the I-95 express lanes is an existing express service operated by DTPW.



2.1.5 Transitway

A resolution was passed in June of 2016 rebranding what was formerly known as the "South Miami-Dade Busway" as the "South Dade Transitway." The Transitway is a 19.8-mile two-lane, at-grade corridor exclusively for DTPW bus service which runs parallel to U.S. 1 from SW 344th Street in South Miami-Dade to the Dadeland South Metrorail Station. Full size (40-foot) and articulated (60-foot) buses serve 30 stations (including Dadeland North) and six park-and-ride lots along the Transitway. Buses also operate within adjacent neighborhoods and enter the exclusive lanes at major intersections.

Most of the routes operating on the Transitway provide limited-stop or express service, or have sections that offer limited stop or express service to maximize use of the transitway and its travel time savings features of exclusive travel lanes, fewer stops, and preferential signal phasing at intersections. Examples of these routes include 31, 34, 38, 52, 252, and 287.





METROBUS ROUTES

Connects with Metrorail Connects with Metrorail Serves Park & Ride Lot Overnight Service Serves Miami International Airport Connects with Tri-Rail

- 1** Perrine ⇌ Quail Road Dr/SW 117 Ave
- 2** 163 St Mall, 54 St ⇌ Downtown Miami
- 3** Aventura Mall ⇌ Downtown Miami
- 7** Dolphin Mall, Miami Int'l Airport ⇌ Downtown Miami
- 8** FIU Medical Campus ⇌ Brickell Metrorail
- 9** Aventura ⇌ Downtown Miami
- 10** Skyline Mall ⇌ Omni Metrorail Terminal
- 11** FIU Medical Campus ⇌ Downtown Miami
- 12** Northside Metrorail ⇌ Mercy Hospital
- 16** 163 St Mall ⇌ Omni Metrorail Terminal
- 17** Norwood ⇌ Vizcaya Metrorail
- 19** (WEEKDAYS ONLY) MDC North Campus ⇌ 163 St Mall
- 21** Northside Metrorail ⇌ Downtown Miami
- 22** 163 St Mall ⇌ Coconut Grove Metrorail
- 24** CORAL WAY LIMITED West Dade ⇌ Brickell Metrorail
- 27** Miami Gardens ⇌ Coconut Grove Metrorail
- 29** (WEEKDAYS ONLY) Miami Lakes Education Center ⇌ Hialeah
- 31** BUSWAY LOCAL South Dade Government Center ⇌ Dadeland South Metrorail
- 32** Coral City ⇌ Omni Metrorail Terminal
- 33** Hialeah ⇌ NE 79 St/Biscayne Blvd
- 34** 34 EXPRESS(WEEKDAY RUSH-HOUR ONLY)
34A: Florida City ⇌ Dadeland South Metrorail
34B: S Dade Gout Ct ⇌ Dadeland South Metrorail
- 35** MDC Kendall Campus ⇌ Florida City
- 36** Dolphin Mall, Dorai, Miami Springs ⇌ Midtown Miami
- 37** Hialeah ⇌ South Miami Metrorail
- 38** BUSWAY MAX Dadeland South Metrorail ⇌ Florida City
- 40** West Dade ⇌ Douglas Road Metrorail
- 42** Operickle Tri-Rail ⇌ Douglas Road Metrorail
- 46** LIBERTY CITY CONNECTION(WEEKDAY RUSH-HOUR ONLY)
Brownsville Metrorail ⇌ Seventh Avenue Transit Village
- 51** FLAGLER MAX(WEEKDAYS ONLY) West Dade ⇌ Downtown Miami
- 52** Dadeland South Metrorail ⇌ South Dade Health Center
- 54** Miami Gardens Dr/NW 87 Ave, Hialeah Gardens ⇌ Biscayne Blvd/NE 54 St
- 56** (WEEKDAYS ONLY) West Dade ⇌ Miami Children's Hospital
- 57** (WEEKDAYS ONLY) Miami Int'l Airport ⇌ Jackson South Hospital
- 62** Hialeah ⇌ Biscayne Blvd / 72 St
- 71** Dolphin Mall ⇌ MDC Kendall Campus
- 72** West Kendall Terminal, Miller Square ⇌ South Miami Metrorail
- 73** Miami Gardens Dr & NW 73 Ave Park & Ride ⇌ Dadeland South Metrorail
- 75** Miami Lakes ⇌ FIU Biscayne Bay Campus
- 77** Norwood ⇌ Downtown Miami
- 79** 79 STREET MAX(WEEKDAY RUSH-HOUR ONLY) Northside Metrorail ⇌ 72 St / Miami Beach
- 82** WESTCHESTER CIRCULATION(WEEKDAYS ONLY) FIU Medical Campus ⇌ Tropical Park
- 83** Palmetto Metrorail, Dorai ⇌ Dadeland North Metrorail
- 87** Dadeland North Metrorail ⇌ West Kendall Terminal
- 93** BISCAYNE MAX(WEEKDAYS ONLY) Downtown Miami ⇌ Aventura Mall
- 95** 95 EXPRESS GOLDEN GLAD(WEEKDAY RUSH-HOUR ONLY)
Coral City, Aventura Mall, Golden Glades ⇌ Downtown Miami, Civic Center
95 EXPRESS DADE BROWARD(WEEKDAY RUSH-HOUR ONLY)
ROUTE 196: Sheridan St ⇌ Downtown Miami
ROUTE 295: Broward Blvd ⇌ Civic Center
ROUTE 296: Sheridan St ⇌ Civic Center

- 99** Miami Gardens Dr. & NW 73 Ave Park & Ride ⇌ Aventura Mall
- A** ROUTE 101: Omni ⇌ 20th Street & West Avenue / Miami Beach
- B** ROUTE 102: Brickell Metrorail ⇌ Key Biscayne
- C** ROUTE 103: South Beach ⇌ Mt. Sinai Medical Center
- 104** West Kendall Terminal ⇌ Dadeland North Metrorail
- E** ROUTE 105: Golden Glades ⇌ Hallandale Beach
- G** ROUTE 107: 94 St / Miami Beach ⇌ MDC North Campus
- H** ROUTE 108: 163 Street Mall ⇌ Haulover Park
- I** ROUTE 109: Miami Int'l Airport ⇌ 41 St / Miami Beach
- L** ROUTE 112: Lincoln Rd ⇌ Hialeah Metrorail
- M** ROUTE 113: Civic Center ⇌ Mt. Sinai Hospital
- 115** MID-NORTH BEACH CONNECTION(Daily Ave / 88 St ⇌ Lincoln Rd
- S** ROUTE 119: Downtown Miami ⇌ Aventura Mall
- 120** BEACH MAX(Downtown Miami ⇌ Aventura Mall
- 132** TRI-RAIL DORAL SHUTTLE(WEEKDAY RUSH-HOUR ONLY; Dorai ⇌ Hialeah Market Tri-Rail
- 135** Hialeah Metrorail, Miami Lakes ⇌ FIU Biscayne Bay Campus
- 136** (WEEKDAY RUSH-HOUR ONLY) SW 136 St / US1 ⇌ Douglas Road Metrorail
- 137** WEST DADE CONNECTION(Dolphin Mall ⇌ South Dade Gov Center
- 150** MIAMI BEACH AIRPORT EXPRESS(Miami Int'l Airport ⇌ South Beach
- 183** Miami Gardens Dr. & NW 73 Ave Park & Ride ⇌ Aventura Mall
- 200** CUTLER BAY LOCAL(SUNDAYS)
- 202** LITTLE HAVITT CONNECTION(Biscayne Shopping Plaza, NW 5 AVE / 83 St ⇌ Miami Design District
- 204** KILLIAN KAT(WEEKDAY RUSH-HOUR ONLY) West Kendall Terminal ⇌ Dadeland North Metrorail
- 207** LITTLE HAVANA CONNECTION(WEEKDAYS) Downtown Miami, Brickell ⇌ SW 25 Ave
- 208** LITTLE HAVANA CONNECTION(WEEKDAYS) Downtown Miami, Brickell ⇌ SW 27 Ave
- 210** SKYLARK CIRCULATION(Dayale Mall ⇌ 163 Street Mall
- 211** OVERTOWN CIRCULATION(WEEKDAYS ONLY)
- 212** SWEETWATER CIRCULATION(WEEKDAYS ONLY)
- 217** BUNCHE PARK CIRCULATION(WEEKDAYS ONLY) NW 127 St / 33 Ave ⇌ N Dade Health Center
- 238** EASTWEST CONNECTION(WEEKDAYS ONLY) Dolphin Mall ⇌ Miami Int. Airport
- 246** NIGHT OMDowntown Miami ⇌ 163 St Mall
- 252** CORAL REEF MAX(Country Walk ⇌ Dadeland South Metrorail, Zoo Miami (Weekends Only)
- 254** BROWNSVILLE CIRCULATION(WEEKDAYS ONLY) Cabel Center ⇌ Jefferson Reeves Park, Hialeah (Thursday only)
- 267** LUDLAM LIMITED(WEEKDAY RUSH-HOUR ONLY) NW 186 St/87 Ave ⇌ Oveschobee Metrorail
- 272** SUNSET KAT(WEEKDAY RUSH-HOUR ONLY) West Kendall Terminal ⇌ Dadeland North Metrorail
- 277** NW 7 AVENUE MAX(WEEKDAY RUSH-HOUR ONLY) Downtown Miami ⇌ Golden Glades Park & Ride
- 286** NORTH POINTE CIRCULATION(SUNDAYS) Miami Gardens Dr. & NW 73 Ave Park & Ride ⇌ NW 57 Ave(NW 176 St
- 287** SAGA BAY MAX(WEEKDAY RUSH-HOUR ONLY) S Dade Health Center ⇌ Dadeland South Metrorail
- 288** KENDALL CRUISE(WEEKDAY RUSH-HOUR ONLY)
West Kendall Terminal, SW 127 Ave Park & Ride ⇌ Dadeland North Metrorail
- 297** 27th AVE ORANGE MAX(WEEKDAYS ONLY) Miami Int'l Airport ⇌ Miami Gardens
- 301** DADE-MONROE EXPRESS(Florida City ⇌ Marathon Key
- 302** CARD SOUND EXPRESS(Florida City ⇌ Ocean Reef Club
- 338** WEEKEND EXPRESS(WEEKDAYS ONLY) Miami Int'l Airport ⇌ Dolphin Mall
- 344** (WEEKDAYS ONLY) Florida City ⇌ MDC Homestead Campus
- 500** MIDNIGHT ON Dadeland South Metrorail ⇌ Downtown Miami

www.miamidade.gov/transit



MDT Tracker App



311 OR 305.468.5900 (TDD: 305.468.5402)



@GoMiamiDade

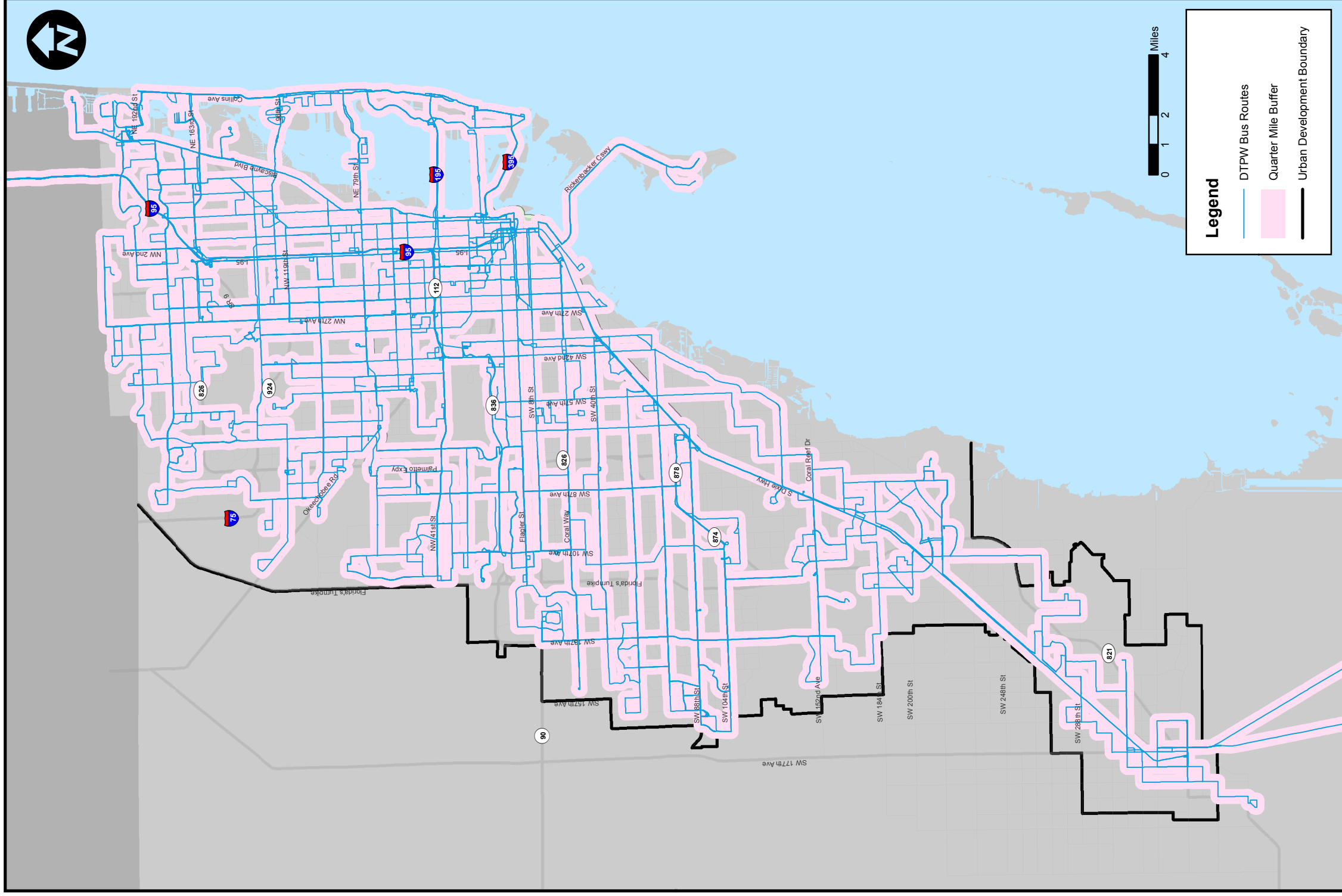


EASY PAY MIAMI | MDT TRANSIT WATCH

DEPARTMENT OF TRANSPORTATION AND PUBLIC WORKS



Figure 2-2: DTPW Service Area Coverage



Miami Dade County Department of Transportation and Public Works Bus Service Area Coverage.
Source: DTPW, December 2017

2.2 Metrorail

Metrorail provides passenger service to 23 stations on a 24.8-mile heavy rail electrified line. The system operates on an elevated guideway with transfer points to Tri-Rail commuter rail service, the DTPW Metromover system, and the South Miami-Dade Transitway. DTPW maintains a total fleet of 136 Metrorail vehicles. Daily passenger service starts at approximately 5:00 a.m. from the terminal stations.

The last southbound trains depart the Palmetto and Airport Stations at:

- Palmetto Station, Green line departs at 11:54 p.m. and arrives at Dadeland South at 12:41 a.m.
- Airport Station, Orange Line departs at 12:23 a.m. and arrives at Dadeland South at 12:56 a.m.

The last northbound trains depart Dadeland South Station at:

- Dadeland South, Orange line departs at 11:45 p.m. and arrives at the Airport Station at 12:18 a.m.
- Dadeland South, Green line departs at 12:00 a.m. and arrives at the Palmetto Station 12:48 a.m.

DTPW operates two lines of service with four (4) and six (6) car trains. The legacy Green Line runs from Palmetto Station to Dadeland South Station and the Orange Line from the Miami Intermodal Center (MIC) at Miami International Airport to Dadeland South Station.

The Orange Line provides direct service between the MIC and Dadeland South Station every 15 minutes during peak hours. The Green Line operates at 15-minute headways during the morning and afternoon peak travel times between the Palmetto Station and Dadeland South Station.

Both lines provide premium transit service with a combined headway of 7.5 to 8 minutes during the peak morning and afternoon travel times from Dadeland South Station to the Earlington Heights Station. Weekend and holiday Green Line and Orange Line service operates with headways of 30 minutes and combine to provide a 15 minute headway from Earlington Heights to Dadeland South Station. DTPW provides a Metrorail Downtown Express Service from Dadeland North to Brickell Station in the morning peak periods and from Brickell to Dadeland North in the afternoon peak periods.

Figure 2-3: DTPW Metrorail System 2017



Source: DTPW, December 2017

2.3 Metromover

DTPW's automated people mover (APM) or Metromover is an elevated system that serves 21 stations and is comprised of three (3) loops:

- Downtown Miami Central Business District (Inner/Downtown Loop);
- Adrienne Arsht Center and Perez Arts Museum to the north (Outer/Omni Loop);
- Brickell area to the south (Outer/Brickell Loop).

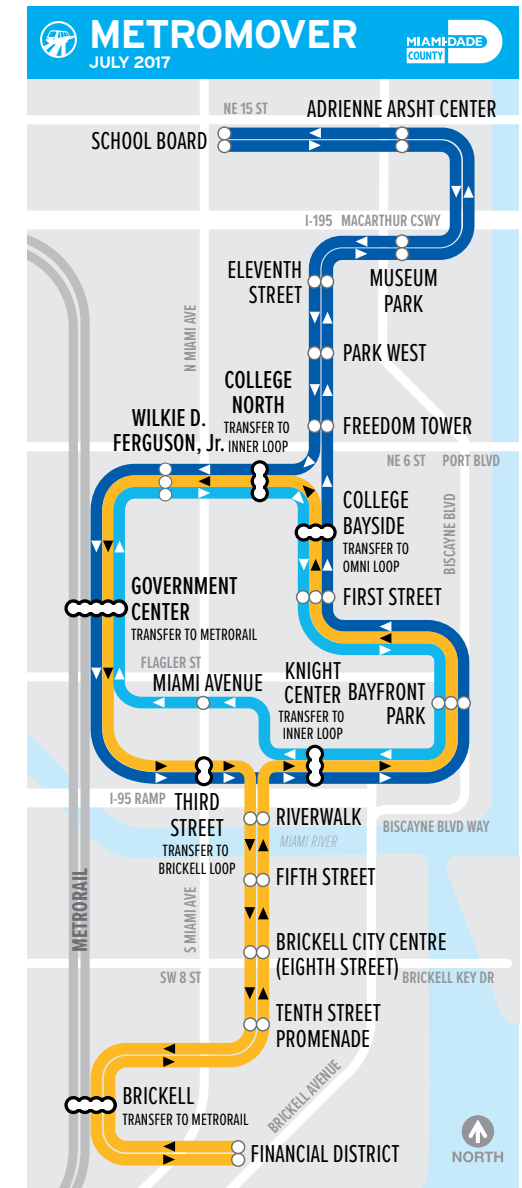
DTPW maintains a fleet of 29 Metromover vehicles and operates with a maximum of two (2) cars per train. Metromover operates free of charge and stops at 21 wheelchair-accessible stations from the School Board area to Brickell, serving major destinations throughout Downtown Miami.

Metromover's Inner/Downtown, Outer/Omni and Brickell loops operate seven (7) days a week and runs from 5:00 a.m. to 12:00 a.m. During the morning and afternoon peak periods, service frequency is every 90 seconds in the central business district and every three (3) minutes during weekends and holidays.

On the Omni and Brickell Loops, service frequency is five (5) minutes during peak periods and six (6) minutes during weekends and holidays.

Figure 2-4 illustrates the DTPW Metromover system map as of December 2017.

Figure 2-4: DTPW Metromover System



Source: DTPW, December 2017

2.4 Special Transportation Services

As mandated by the Americans with Disabilities Act of 1990 (ADA), DTPW operates a demand-response service known as Special Transportation Services (STS). STS is a shared-ride, door-to-door transportation service for certified individuals with disabilities who are unable to utilize the accessible fixed-route transit system.

Service is provided by sedans, vans and lift-equipped vehicles, seven (7) days a week, 24 hours per day. Presently, there are 386 vehicles available for paratransit service transportation. Currently, these vehicles are privately contracted through Transportation America (TA).

As of December 2017, a total of 31,224 eligible clients are enrolled in the STS program including both ambulatory and non-ambulatory clients.



2.5 Services Provided by Private Contractors

DTPW currently contracts out 16 fixed route bus services, which are operated by America's Transportation (AT) and Limousines of South Florida d/b/a Transportation America (TA). AT operates two bus routes that provide service to Mile Marker 50 in the City of Marathon in Monroe County (Routes 301 and 301). TA operates 14 bus routes that serve approximately 893 bus stops with over 207 directional route miles in Miami-Dade County. The private sector also provides several transit support services, such as:

- Security at Metrorail/Metromover stations, as well as other DTPW facilities;
- Maintenance-type service, such as tires, janitorial, elevators/escalators, etc.;
- Marketing and other similar contracts;
- Planning and technical support;
- Maintenance of bus benches/shelters at no cost to the County; and,
- Bus/rail advertising services



2.6 Miami-Dade Transit Passenger Fare Structure

DTPW's automated passenger fare collection system for Metrorail and Metrobus is known as the EASY Card. Cash fare payments are still accepted on Metrobus; however Metrobus passengers are encouraged to purchase the DTPW EASY Card to take advantage of discounted transfer fees. Metrorail passengers are now required to purchase and load the contactless DTPW EASY Card. These cards are purchased at a fee of \$2.00 and loaded with appropriate fare amounts for passage. Table 2-2 presents the current fare structure.

Table 2-2: DTPW Fare Structure Summary, December 2017

	Regular Fare	Discount Fare ¹
Metrobus	\$2.25	\$1.10
Inter-County Express Bus	\$2.65	\$1.10 - \$1.30
Intra County Express Bus Reg Fare	\$2.25	\$1.30
Shuttle Bus ²	25¢	10¢
Metrorail	\$2.25	\$1.10
Metrorail daily parking fee	\$4.50	Not Applicable
Metrorail monthly parking permit ³	\$11.25	Not Applicable
Metromover	Free	Free
Special Transportation Service (STS)	\$3.50	Not applicable
Bus-to-Bus Transfer ⁴	Free	Free
Bus-to-Express Bus Transfer	50¢+45¢ upgrade=95¢	25¢+20¢ upgrade=45¢
Bus-to-Rail Transfer	60¢	30¢
Rail-to-Bus Transfer	60¢	30¢
Shuttle Bus-to-Bus or Rail Transfer	\$2.00	\$1.00
Shuttle Bus-to-Express Bus Transfer	\$2.40	\$1.20
1-Month Pass	\$112.50	\$56.25
1-Month Pass + Monthly Metrorail Parking Permit	\$123.75	\$67.50
1-Month Pass - Group Discount 4-99 passes	\$101.25	Not applicable
Regional Monthly Pass	\$145	\$72.50

¹ Discount fare is available for Medicare recipients, most people with disabilities, and students in grades K-12 when using an EASY Card for discount fare rides, which replaces all previous discount IDs and permits. Preschool children less than 42 inches in height can ride Metrobus and Metrorail free at all times with an accompanying adult. Parents or guardians of pre-schoolers are encouraged to present proof of age to bus operators and rail personnel to access the system. EASY Cards are not issued to pre-schoolers.

² DTPW operates six shuttle routes: 132/Doral-Tri-Rail Shuttle, 200/Cutler Bay Local, 211/Overtown Circulator, 212/Sweetwater Circulator, 254/Brownsville Circulator, and 286/North Pointe Circulator. There is no fare for route 132 (Doral-Tri-Rail Shuttle).

³ Only available with the purchase of a monthly pass.

⁴ Transfers are free for passengers traveling in one direction (not for round trips) using an EASY Card or EASY Ticket only within three hours of initial access of system. Passengers paying with cash must pay the full fare each time they board a bus.

Table 2-2: DTPW Fare Structure Summary, December 2017 (continued)

	Regular Fare	Discount Fare ¹
1-Month Pass - Group Discount 100 or more passes	\$95.65	Not applicable
7-Day Pass	\$29.25	\$14.60
1-Day Pass	\$5.65	\$2.80
College/Adult Education Center Monthly Pass	\$56.25	Not applicable
Golden Passport or Patriot Passport	Free	Free
EASY Card (cost of media)	\$2.00	Not applicable
EASY Ticket (cost of media)	Free	Not applicable
Transit Mobility	Free	Free
Commuter Reduced	Not Applicable	Half-fare on every ride

Source: Department of Transportation and Public Works, December 2017

2.6.1 Farebox Recovery Ratio

The farebox recovery ratio of a passenger transportation system is the fraction of operating expenses which are covered by the fares paid by passengers. It is calculated by dividing the system's total fare revenue by its total operating expenses. Most transit systems are not fully self-supporting, so advertising revenue, government subsidies, and other sources of funding are usually required to cover total operating costs.

Table 2-3 illustrates DTPW's farebox recovery ratio as reported to National Transit Database (NTD) for each mode. Note that DTPW's Metromover is a free fare service and therefore collects no farebox revenue.

Table 2-3: Farebox Recovery by DTPW Mode

Mode	FY 2016	FY 2017
Metrobus	24.3%	19.1%
Metrorail	19.8%	15.9%
STS	11.1%	11.7%

Source: DTPW National Transit Database Facts at a Glance Report, Dec. 2017

¹ Discount fare is available for Medicare recipients, most people with disabilities, and students in grades K-12 when using an EASY Card for discount fare rides, which replaces all previous discount IDs and permits. Preschool children less than 42 inches in height can ride Metrobus and Metrorail free at all times with an accompanying adult. Parents or guardians of pre-schoolers are encouraged to present proof of age to bus operators and rail personnel to access the system. EASY Cards are not issued to pre-schoolers.

2.7 Miami-Dade Transit's Special Programs

Section 427, Florida Statutes and Rule 41-2 Florida Administrative Code, establishes and mandates the creation of the Commission for the Transportation Disadvantaged in the State of Florida. A Community Transportation Coordinator (CTC) in each county is appointed by the Commission for the Transportation Disadvantaged and is responsible for the coordination and provision of cost-efficient transportation services and the elimination of duplication through a coordinated system. In Miami-Dade County, the County government is the local coordinator. DTPW is charged with the responsibility of creating programs, applying for the grants and coordinating transportation services for the disadvantaged. Programs such as the Section 5310, Golden Passport, Patriot Passport, and Lifeline Services are also included in the Coordinated Transportation System.

2.7.1 Transportation Disadvantaged Program

The Transportation Disadvantaged Program, through a state funded grant, provides EASY Tickets and EASY Cards to transportation disadvantaged (homeless, children and families at risk, vocational training, and rehabilitation) Miami-Dade County residents. The EASY Ticket program provides tickets to qualifying social service agencies to distribute to their clients for use on the Miami-Dade County transit system. Currently there are 100 agencies enrolled in the program. The Transit Mobility EASY Card Program provides annual EASY Cards to individuals who are TD eligible. Currently, there are 10,176 TD Mobility Customers.

2.7.2 Section 5310 Program

DTPW actively participates in the Federal Transit Administration (FTA) Section 5310 program by participating in the grant review, evaluation and award process. DTPW in its role as the CTC is responsible for the program coordination with local non-profit agencies serving elderly and disabled residents in Miami-Dade County.

2.7.3 Corporate Discount Program

DTPW's Corporate Discount Program (CDP) allows participants to save on commuting costs through group discounts and pre-tax savings, by purchasing public transportation through a tax deduction from their employer under IRS Code 132(f). It allows employees to pay for their public transit rides using pre-tax dollars, up to \$255 month (\$3,060/year) in 2017. The CDP provides monthly transit passes on Corporate EASY Cards, good for a month of unlimited rides on Metrobus and Metrorail, at a 10 percent (10%) discount for groups of 4-99 participants, and a 15 percent (15%) discount for groups of 100+ participants. Participants who take Metrorail can save even more by purchasing their \$11.25 monthly Metrorail parking permit with pre-tax dollars. In 2017, the CDP generated approximately \$8.8 million in revenue. Currently the number of companies enrolled is 211.

2.7.4 College / Vocation School Discount Program

College, university, vocational/technical, and adult education school students can purchase a one-month pass on an Orange EASY Ticket for \$56.25, half the cost of a full price monthly pass. This program is offered to full-time students using DTPW's public transportation system to get to school. Over 50 schools are participating in the program generating approximately \$2.8 million in annual sales.

2.7.5 K-12 Discount Program

Miami-Dade County students in grades K-12 can ride Metrobus and Metrorail at 50 percent (50%) off the regular fare. First time eligible students may obtain a specially encoded EASY Card at no cost by applying online www.miamidade.gov/transit/fare-k12 or visiting the Transit Service Center Kiosk located on the second floor of the Stephen P. Clark Center, at 111 NW 1st Street, or Pass Sales Office located at 701 NW 1 Court, Suite 121. This program is open to any student attending public or private schools in Miami-Dade County. Currently, there are over 6,200 K-12 customer accounts.

2.7.6 EASY Card Sales Outlets

EASY Card Sales Outlets are conveniently located throughout Miami-Dade County for transit customers to obtain or load cash value and/or passes onto the EASY Card or EASY Ticket. The DTPW EASY Card Services Division is responsible for training new vendors and managing all EASY Card Sales Outlets, providing DTPW with an average of \$5.9 million in revenue a year. Currently there are over 98 sales vendors throughout Miami-Dade County.

2.7.7 Golden Passport Office

The Golden Passport EASY Card provides free transportation to senior citizens 65 years and over or Social Security beneficiaries who are permanent Miami-Dade County residents. A Patriot Passport provides free transportation to disabled veterans who are permanent Miami-Dade County residents. Currently, there are 208,562 certified Golden Passport/Patriot Passport customer accounts; this includes 183,968 Golden Passport customers over 65 years of age, 22,480 Golden Passport customers under 65 years of age, and 2,114 Patriot Passport customers.

2.8 Customer Information / Convenience

2.8.1 Smartphone Mobile Application (iPhone and Android)

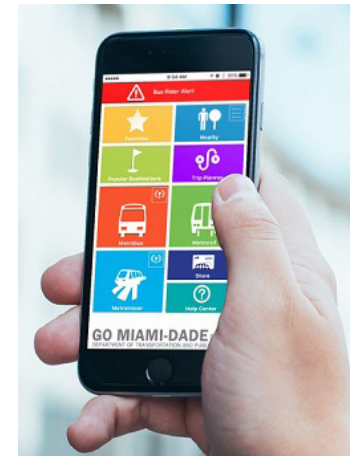
DTPW has deployed real-time iPhone and Android applications for Metrorail/Metrobus/Metromover arrival/departure, route and schedule information. These mobile applications provide DTPW passengers with everything that is currently present on the DTPW mobile web site as well as additional smartphone-specific features in the form of an app to include:

- Rider alerts
- Train Tracker
- Bus Tracker
- Service updates
- Elevator/escalator operational status
- Metrobus schedules and routes
- Metrorail station information
- Metromover station information
- Fare information
- Rider alert registration
- Contact numbers
- Feedback zone
- Where Am I?
- Live Mapping
- Bus Stop Look Up
- Nearby (which shows all stops/stations and real-time vehicles around you with the ability to scroll around the County)
- STS (with access to the STS Connect online service for its clients)
- Integration with other apps such as EASY Pay, Pay by Phone, and MDT Transit Watch mobile application for submitting safety concerns in real-time
- 3-D touch support for iPhones.

2.8.2 Electronic Transit Rider Alert System / Train Tracker / Mover Tracker / Bus Tracker

DTPW continues to implement customer convenience enhancements to their Rider Alert system that notifies passengers about transit service delays. Registered users receive electronic alerts on detours, route changes, and updates for Metrobus as well as service interruptions for Metrorail, Metromover, Metrobus, and Special Transportation Services. The Rider Alert system also provides the operational status of Metrorail or Metromover station elevators and escalators. Customers must sign-up to receive these electronic alerts to their cellular phones, email addresses, text pagers, and smart phones. There are currently 2,766 customers who are signed up to receive these electronic alerts. Train Tracker service allows users to see, via the web and on mobile devices, the estimated time of arrival of the next Metrorail train.

DTPW has a real-time Metromover Tracker System, "Mover Tracker" using the web-based technology and is available via computer desktops, cell phones/smartphones, personal digital assistants (PDAs) and tablets. These software applications also provide other useful transit information such as service alerts, rail and mover station information, and elevator/escalator status. Similar systems are active for Metrorail and Buses (Train Tracker and Bus Tracker).



2.9 Maintenance and Storage Facilities

DTPW currently operates three (3) maintenance bus garages to serve a fleet of 847 buses. The DTPW garages are located in various areas throughout the County to provide efficient maintenance and storage services at the following locations:

- Central Facility: 3311 NW 31st Street, Miami, Florida 33142; serving 37 bus routes
- Coral Way Facility: 2775 SW 74th Avenue, Miami, Florida 33155; serving 33 bus routes
- Northeast Facility: 360 NE 185th Street, Miami, Florida 33179; serving 27 bus routes

The Metrorail fleet of 136 rail cars is maintained and stored at:

- William E. Lehman Center: 6601 NW 72nd Avenue, Miami, Florida 33166.

The Metromover fleet of 46 cars is supported by the maintenance facility located at:

- 100 SW 1st Avenue in Downtown Miami

2.10 Park-and-Ride Facilities

DTPW currently has over 12,000 available parking spaces, including 31 park-and-ride facilities which serve one or more Metrobus routes. Seventeen of those locations are located at Metrorail stops.

Actual parking usage is highest on the southern portion of the Metrorail line and to the north at the Metrobus Golden Glades park-and-ride facility. Figure 2-5 identifies the location of existing park-and-ride facilities that serve the DTPW system.

2.11 Pedestrian Overpasses

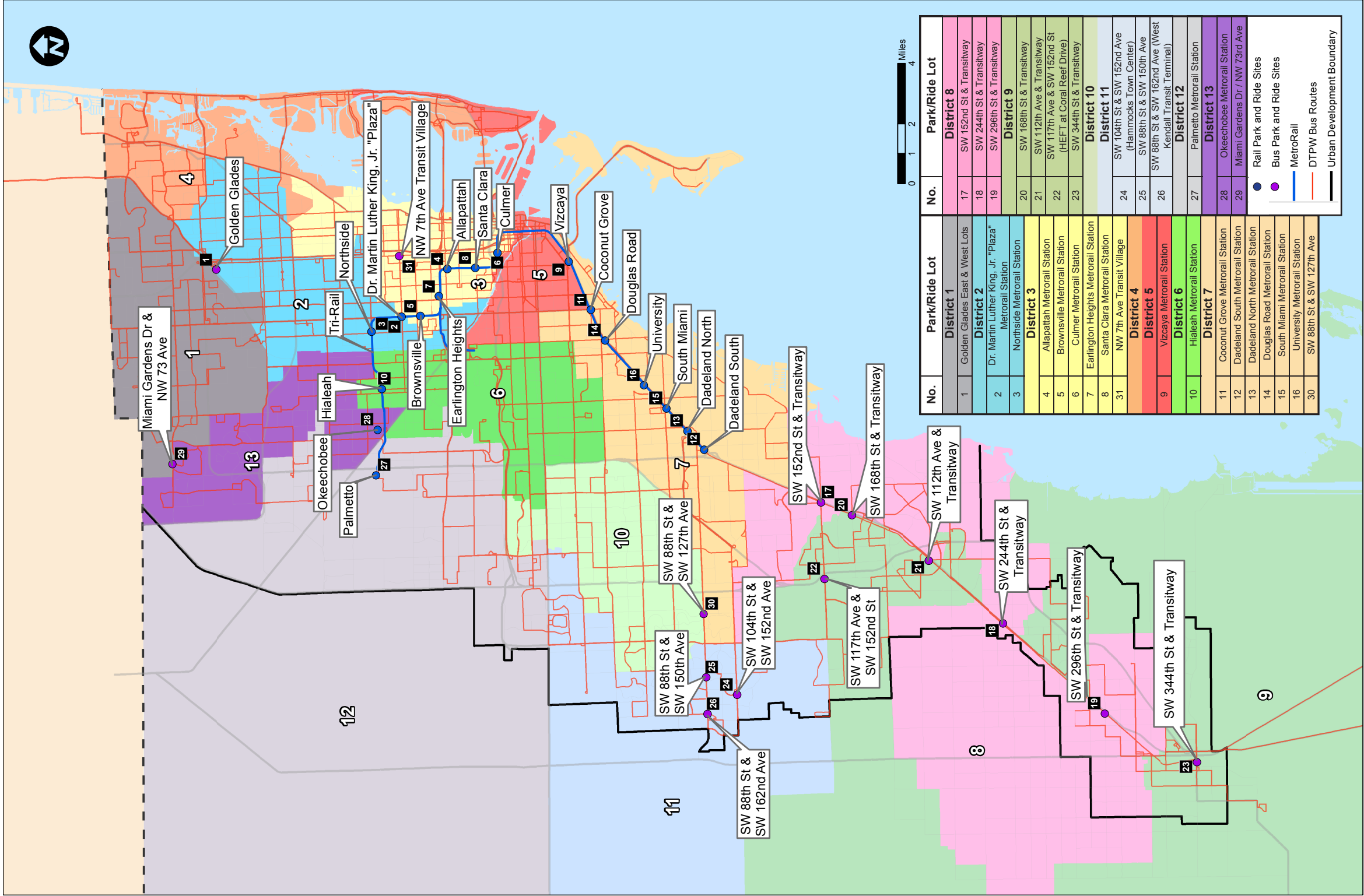
To facilitate a safe passenger connection, DTPW maintains pedestrian overpasses throughout its transit system. A listing of the location of these pedestrian overpasses is provided below:

1. Douglas Road Metrorail Station Pedestrian Overpass
2. Vizcaya Metrorail Station Pedestrian Overpass
3. Hialeah Metrorail Station Overpass
4. Snapper Creek Expressway and US-1 M-Path Overpass
5. University Metrorail Station Pedestrian Overpass



This page intentionally left blank

Figure 2-5: Existing DTPW Park-and-Ride Facilities



This page intentionally left blank

2.12 Transit Oriented Development

In an effort to increase transit ridership, generate revenue, and create attractive and dynamic station areas, DTPW has partnered with the private sector to implement the following transit oriented development projects:

Dr. Martin Luther King, Jr. Plaza Metrorail Station

Project: Dr. Martin Luther King, Jr. Plaza Office Building

- 5-story, 172,000 sq. ft. office building including 13,500 sq. ft. of ground floor retail
- Demolition of portion of parking structure and renovation of 631-space entire garage
- Covered walkway linking building with station

Location: NW 62nd Street at NW 27th Avenue

Development Area: 7.9 Acres

Status: 2001 groundbreaking; 2004 office building opened and garage re-opened



Allapattah Metrorail Station

Project: Allapattah Garden Apartments.

- Affordable rental housing complex with surface parking
- 8 garden-style, 3-story buildings totaling 135,100 SF
- 128 two and three bedroom units
- Clubhouse, tenant amenities, resident programs and services, day care center

Location: NW 36th Street at NW 12th Avenue, City of Miami

Development Area: 4.7 Acres

Status: Groundbreaking October 2002. Completed spring 2004



Santa Clara Metrorail Station

Project: Santa Clara Apartments

- Phase I: 9-story, 208-unit affordable rental apartment building, 157 surface parking and 51 Phase II garage parking spaces
- Phase II: 17-story, 204-unit affordable rental apartment building; 319 parking spaces on 5 levels with 207 spaces for Phase II tenants, 51 spaces for Phase I tenants and 61 ground floor spaces dedicated for Metrorail patrons

Location: NW corner, NW 20th Street at NW 12th Avenue, City of Miami

Development Area: 3.3 Acres

Status: Phase I Certificate of Occupation (CO) 2004 - Phase II CO 2006



Overtown

Projects: Overtown Transit Village (OTV) North (Phase 1)

- 17-story, 309,900 sq. ft. office building
- separate 9-story, 590-space parking garage
- 4,000 sq. ft. ground floor retail

Overtown Transit Village South (Phase II)

- 21-story, 300,000 sq. ft. office building including garage
- 7,152 sq. ft. ground floor lobby
- integrated 6-story, 334-space parking garage

Location: NW 1st Court between NW 6th and 8th Streets, City of Miami

Development Area: 2.1 Acres

Status: OTV I: Groundbreaking May 2004, construction began May 2004, completed June 2006. First occupancy March 2007

OTV II: Construction began winter 2007, completion early-mid 2010



Dadeland South

Projects: Datan Center I & II (Phases 1 & 3)

- 2 Class A office buildings, 476,412 rentable square feet
- 35,000 square feet retail space
- 3,500 parking spaces, 1,100 = dedicated transit patron usage

Miami Marriott Dadeland Hotel and Conference Center (Phase 2)

- 302 luxury hotel rooms

Dadeland Centre I (Phase 4A)

- 18 story Class A office building (8 floors offices, 9 floors parking)
- 152,014 square feet

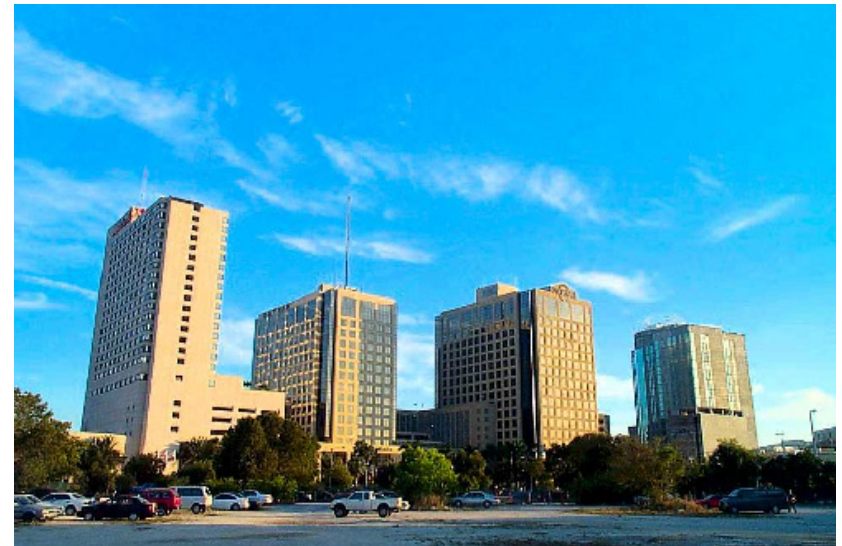
Dadeland Centre II (Phase 4B)

- 15 story Class A office building (8 floors office, 6 floors parking)
- 119,516 square feet; ground floor retail

Location: S. Dixie Highway/U.S. 1 between Dadeland Boulevard and the Palmetto Expressway Overpass, Unincorporated Miami-Dade County

In Operation: Phases 1, 2 & 3 since 1984, Phase 4A since 2005 & Phase 4B since 2008

Term: Lease commenced July 1982; initial term to Dec. 2038; automatic 44-year renewal to Dec. 2082; automatic 50-year renewal to 2132.



2.13 Municipal Transit Services

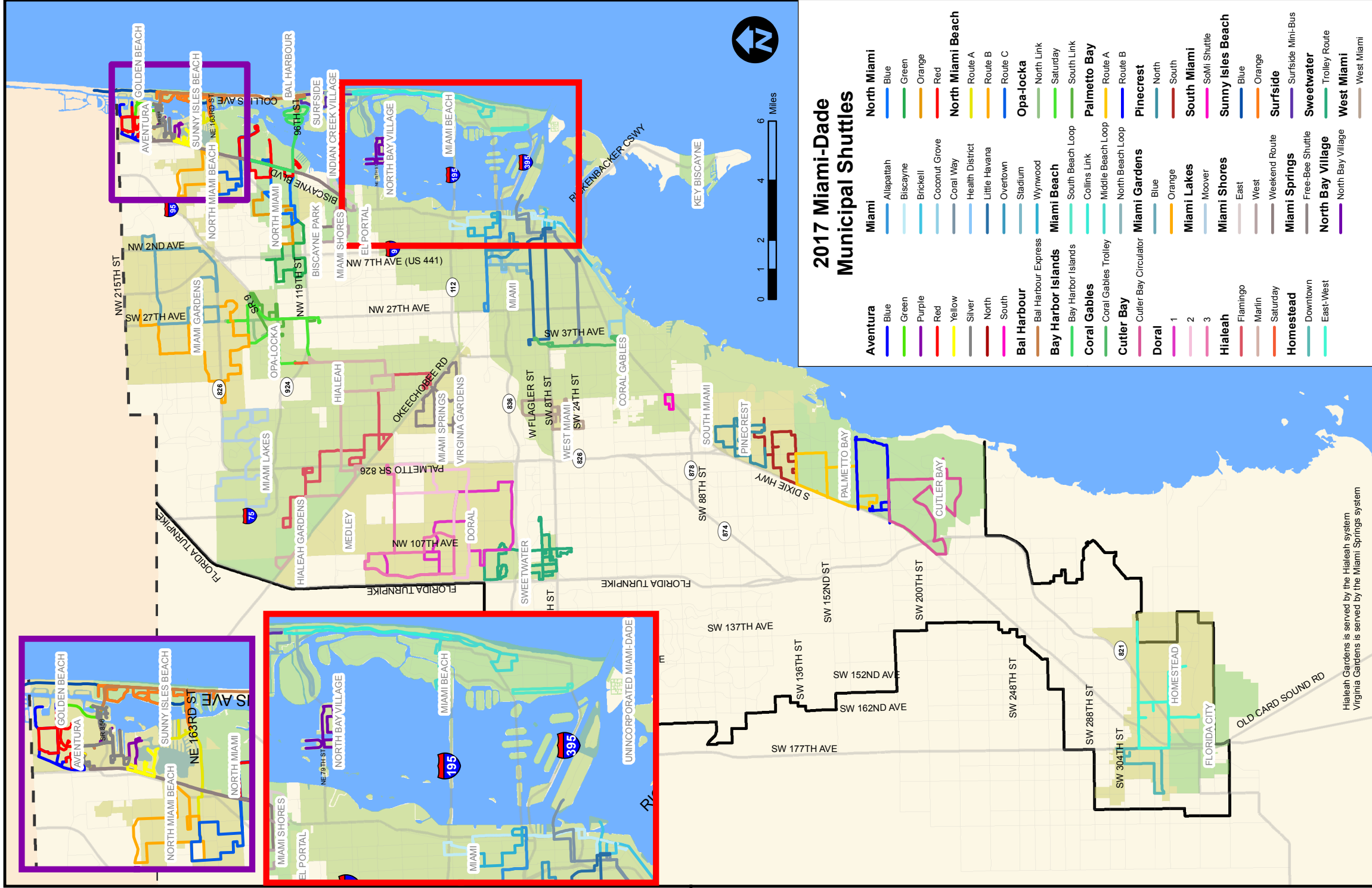
DTPW continues to coordinate with local municipalities to avoid duplication of transit services and allow for efficient transit operations that complement one another. Currently, there are 34 municipalities eligible to receive surtax funding with 33 participating in the program (Indian Creek is not participating). Of these 33 municipalities participating in the program, 27 have local transit circulators that supplement DTPW bus routes. Figure 2-6 presents a map of local municipal circulators. The 27 municipalities below operate a circulator, partner with another municipality or partner with DTPW.

- City of Aventura
- Village of Bal Harbour
- Town of Bay Harbor Islands
- City of Coral Gables
- Town of Cutler Bay (Interlocal Agreement (ILA) with DTPW)
- City of Doral
- City of Hialeah
- City of Hialeah Gardens (ILA with the City of Hialeah)
- City of Homestead
- City of Miami
- City of Miami Beach (ILA with DTPW)
- City of Miami Gardens
- Town of Miami Lakes
- Town of Medley (Monday/Thursday only service to various shopping plazas)
- Miami Shores Village
- City of Miami Springs
- City of North Bay Village
- City of North Miami
- City of North Miami Beach
- City of Opa-locka
- Village of Palmetto Bay
- Village of Pinecrest
- City of Sunny Isles Beach
- Town of Surfside
- City of Sweetwater
- Village of Virginia Gardens (ILA with the City of Miami Springs)
- City of West Miami

The collective ridership on these circulators exceeds 10.8 million passenger trips annually. The annual ridership of the three largest circulator systems – (1) City of Miami, (2) City of Miami Beach and (3) City of Coral Gables, - collectively totaled 8,456,422 in FY 17 and grew 12 percent since FY 16. It should be noted that many of the municipalities operating circulator systems exceed the 20 percent minimum surtax transit expenditure requirement. Appendix A.3 provides a listing of each municipality, respective service operator and website.



Figure 2-6: Municipal Circulator Routes



This page intentionally left blank

2.14 REGIONAL TRANSIT SERVICE CONNECTIONS

2.14.1 Broward County Transit (BCT)

The Broward County Office of Transportation operates BCT, a fixed route bus service, which connects with DTPW service. BCT operates 45 routes during weekdays, 31 routes on Saturday and 29 routes on Sundays, with varying service schedules spanning from before 4:35 AM to after midnight on weekdays. A regular one-way fare is \$2.00 while a reduced one-way fare is \$1.00, and an all day pass is \$5.00. The express bus one-way fare is \$2.65 while the reduced one-way fare is \$1.30. DTPW passengers transferring to BCT will provide the BCT bus operator with the Inter-County Ticket and pay \$0.50. Passengers transferring from BCT to DTPW will provide the DTPW bus operator with the BCT Transfer and pay \$0.60 for a full-fare transfer, \$0.30 for a discounted-fare transfer, \$0.95 for an express-bus transfer or \$0.45 for a discounted fare transfer.

BCT and DTPW have partnered to provide regional bus service between Broward and Miami-Dade Counties. Currently, DTPW buses travel into Hallandale Beach (southern Broward), and BCT buses travel into Aventura, North Miami, Miami Gardens, and the Golden Glades interchange. Bus service from both agencies operates within the I-95 express lanes, connecting northern and central Broward communities with Downtown Miami. BCT operates the 595 Express which connects western Broward communities to the Civic Center and Downtown Miami. The following table lists those locations and BCT bus routes that provide connecting service to Metrobus routes.



Table 2-4: BCT Routes Serving Miami-Dade County

Bus Route	Service Connection Location
1	Aventura Mall, US 1
2	NW 207 Street, NW 27th Avenue, University Drive
18	Golden Glades, State Road 7
28	Aventura Mall, State Road 7
441 Breeze, University Breeze	Golden Glades, Miami Gardens Drive
US 1 Breeze	Aventura Mall, US 1
595 Express Miami/Brickell	Overtown Metrorail station, Eighth Street, Metromover station, Brickell Metrorail station
595 Express Miami Civic Center	Civic Center Metrorail station
95 Express Miramar, 95 Express Pembroke Pines	Miami VA Hospital, Jackson Memorial Hospital, Miami Civic Center, University of Miami Hospital
95 Express Hollywood	Miami VA Hospital, Jackson Memorial Hospital, Miami Civic Center, University of Miami Hospital, Overtown Metrorail station, Downtown Miami Transit Terminal
95 Express Pembroke Pines / Miramar	Overtown Metrorail station, Downtown Miami Transit Terminal

Source: Broward County Transit, 2017

2.14.2 South Florida Regional Transportation Authority (SFRTA)

The SFRTA operates Tri-Rail a commuter rail service that operates along 72 miles of the South Florida Rail Corridor (SFRC) which spans Palm Beach County, Broward County, and Miami-Dade County. Tri-Rail primarily runs through the eastern urbanized areas of the three (3) counties between the Mangonia Park station in Palm Beach County and the Miami Airport station in Miami-Dade County. Tri-Rail serves 18 passenger stations and averages more than 14,000 boardings per weekday.

Weekday service spans from 4:00 a.m. to 11:35 p.m., with operations of 20 minute headways in each direction during the Peak periods, Off-peak headways are 60 minutes in each direction. Weekend service spans from 5:17 a.m. to 11:45 p.m. with 60 minute headways. Tri-Rail operates a zonal fare system and is comprised of six (6) equidistant zones. Fares are determined by the sum of zones traveled; the regular base fare for one-way travel is \$2.50, discounted one-way is \$1.25, regular round-trip is \$4.40 and discounted round-trip is \$2.50. On weekends and holidays, daily passes are issued for \$5.00 and discounted is \$2.50. The cost for the Tri-Rail monthly pass is \$145 (\$72.50 discounted for children, seniors, and persons with disabilities).



Tri-Rail passengers transferring to the DTPW system at a Tri-Rail transfer point are required to pay as presented in the following table:

Table 2-5: Tri-Rail-DTPW Transfer Fares

Transferring from Tri-Rail	Full Fare	Discount Fare
Metrorail	\$1.20	\$0.60
Metrobus	\$0.60	\$0.30
Express Bus	\$0.95	\$0.45
Return Trip	Full Fare	Discount Fare
All Modes/Express Bus	\$2.25/\$2.65	\$1.10/\$1.30

Source: Tri-Rail, 2017

Tri-Rail has five (5) station locations in Miami-Dade County that connect with DTPW services including Metrobus and Metrorail. The five (5) Tri-Rail stations are Golden Glades (Metrobus routes 105 E, 22, 77, 246 Night Owl, 277 NW 27th Ave MAX, 95 Golden Glades Express), Opa-locka (Metrobus routes 32, 42, 135), Tri-Rail/Metrorail Transfer (Metrobus routes 42, 112 L, Metrorail Green Line), Hialeah Market (Metrobus routes 110 J, 36, 37, 132), and the Miami International Airport (MIA) Tri-Rail station (110 J, 37, 57, 42, 7, 150 Miami Beach Airport Flyer, 238 East-West Connector, 297 27th Avenue Orange Max, and Metrorail Orange Line).

In 2019, Tri-Rail will provide a direct connection to downtown Miami from the SFRC to the Little River FEC railroad spur and into the Miami Central Station adjacent to Government Center.

Table 2-6: Tri-Rail Stations and DTPW Route Connections

Tri-Rail Station	DTPW Route	Major Destinations
Broward County		
Fort Lauderdale	95 Dade-Broward Express	Downtown Miami, Fort Lauderdale Tri-Rail station
Sheridan St	95 Dade-Broward Express	Downtown Miami, Sheridan Street Tri-Rail station
Miami-Dade County		
Golden Glades	105 E	Jackson North, The Mall at 163rd Street, City of North Miami Beach, Eastern Shores, Winston Towers, Aventura Mall, Turnberry Isle, Diplomat Mall/Hallandale
	22	City of North Miami Beach, The Mall at 163rd Street, Earlington Heights Metrorail station, Coconut Grove Metrorail station, Sunshine State Industrial Park
	77	SR 441, Liberty City, Culmer Metrorail station, Government Center Metrorail station, Main Library, Historical Museum of South Florida, Miami Art Museum, Downtown Miami Bus Terminal, NW 7th Avenue Transit Village
	246 Night Owl	The Mall at 163rd Street, Downtown Miami, Government Center Metrorail station, Overtown, Civic Center Metrorail station, University of Miami/Jackson Memorial Hospitals and clinics, Allapattah Metrorail station
	277 NW 7th Ave MAX	Downtown Miami, Government Center Metrorail station, Culmer Metrorail station, Edison Center, North Miami, Biscayne Gardens, NW 7th Avenue Transit Village
	95 Golden Glades Express	Golden Glades Park & Ride Lot, Civic Center, Veterans Hospital, Jackson Memorial Hospital, Norwood, Earlington Heights Metrorail station, Downtown Miami, Brickell
Opa-locka	32	Carol City, St. Thomas University, Florida Memorial College, City of Opa-locka, Opa-locka Tri-Rail station, Miami Dade College North Campus, Northside Metrorail station, Northside Shopping Center, Santa Clara Metrorail station, Omni Bus Terminal
	42	Miami Springs, City of Opa-locka City Hall, Opa-locka Tri-Rail station, City of Hialeah, Amtrak Passenger Terminal, Tri-Rail Metrorail station, Miami International Airport Metrorail station, City of Coral Gables, Douglas Road Metrorail station
	135	Hialeah Metrorail station, Miami Lakes, Opa-locka Tri-Rail, FIU Biscayne Bay
Tri-Rail / Metrorail Transfer	112 L	Lincoln Road Mall, Miami Beach Convention Center, JFK Causeway, Northside Metrorail station, Amtrak Terminal, Hialeah Metrorail station
	42	Miami Springs, City of Opa-locka City Hall, Opa-locka Tri-Rail station, City of Hialeah, Amtrak Passenger Terminal, Tri-Rail Metrorail station, Miami International Airport Metrorail station, City of Coral Gables, Douglas Road Metrorail station
Hialeah Market	110 J*	Miami International Airport Metrorail station, Allapattah Metrorail station, City of Miami Beach
	37	City of Hialeah, Dept. of Children & Families, Hialeah Metrorail station, Tri-Rail Airport station, Miami International Airport Metrorail station, Douglas Road Metrorail station, City of South Miami, South Miami Metrorail station
	36*	Dolphin Mall, Miami International Mall, Miami Dade College West Campus, Doral Center, City of Miami Springs, Miami Springs High School, Allapattah Metrorail station
	132 Doral/ Tri-Rail Shuttle	Doral Executive Center, Doral Country Club, Atrium Shopping Center, Miami Springs, Hialeah Market, Tri-Rail station

Tri-Rail Station	DTPW Route	Major Destinations
Miami Airport	42	Miami Springs, City of Opa-locka City Hall, Opa-locka Tri-Rail station, City of Hialeah, Amtrak Passenger Terminal, Tri-Rail Metrorail station, Miami International Airport Metrorail station, City of Coral Gables, Douglas Road Metrorail station
	297 27th Avenue Orange MAX**	Miami International Airport (MIA) Metrorail station, Martin Luther King Jr. Metrorail station, Brownsville Transit Village, Brownsville Metrorail station, Miami Dade College North, City of Opa-locka, City of Miami Gardens, Dolphin Stadium
	150 Miami Beach Airport Flyer	Miami International Airport (MIA) Metrorail station, City of Miami Beach
	7	Miami International Airport (MIA) Metrorail station, City of Sweetwater, Dolphin Mall, Miami International Mall, Mall of the Americas, Downtown Bus Terminal, Main Library, Historical Museum of South Florida, Miami Art Museum, MDC Wolfson Campus, Historic Overtown/Lyric Theatre Metrorail station
	37	City of Hialeah, Dept. of Children & Families, Hialeah Metrorail station, Tri-Rail Airport station, Miami International Airport Metrorail station, Douglas Road Metrorail station, City of South Miami, South Miami Metrorail station
	57	Tri-Rail Airport station, Miami International Airport (MIA) Metrorail station, South Miami Metrorail station, Red Road (NW/SW 57 Avenue), Transitway at SW 152 Street, SW 152 Street Park & Ride Lot, Jackson South Hospital
	110 J	Miami International Airport Metrorail station, Allapattah Metrorail station, City of Miami Beach
	238 East-West Connection	Dolphin Mall, Miami International Mall, Airport Corporate Center, Airport Cargo City, Airport Hilton Hotel and Miami International Airport (MIA) Metrorail station.

Source: DTPW, December 2017, SFRTA, December 2017

* Route does not enter the Tri-Rail station; passengers must access DTPW Routes from NW 36th Street.

** Route does not enter the Brownsville Transit Village or the Brownsville Metrorail station. Passengers must access the Route from the stop north of NW 53rd street.

2.15 NATIONAL CONNECTIONS

2.15.1 Greyhound Intercity Passenger Bus Service

Greyhound operates one (1) station and three (3) additional stops in Miami. The Miami Greyhound Bus Station is located East of MIA Airport, at 3801 NW 21st Street #171, and also operates buses out of the nearby Miami Intermodal Center (MIC). The additional Greyhound stops are located in Cutler Bay, Downtown Miami, and the Golden Glades Park and Ride in North Miami. Greyhound offers bus service from Miami to all major US cities and more than 1,800 minor cities and towns across the country. Ticket prices currently range from \$9.00 for a trip from Cutler Bay to North Miami, up to \$300 for a trip to Seattle, WA.



2.15.2 Amtrak Intercity Passenger Rail Service

The Miami Amtrak station is located at 8303 NW 37th Avenue with an extension running to the Miami Intermodal Center (MIC). Miami is the southern terminus for the Silver Service / Palmetto Line, which connects Miami to New York Penn Station by way of Philadelphia, Baltimore, Washington DC, Raleigh, Charleston, Jacksonville, Orlando, Fort Lauderdale, and many smaller cities in between. Major connections to East-West running lines are available in Washington DC and beyond. Coach seats are currently available from Miami for prices starting at \$40 for a trip to Winter Haven Florida, up to \$320 to reach the other end of the Palmetto Line at New York Penn Station. Sleeper rooms are currently available for prices starting at \$140 for a trip to Winter Haven, up to \$1,400 for a trip to New York.



