



RIDERSHIP TECHNICAL REPORT

Division of Performance and Materials Management



March 2015

Table of Contents

Table of Contents	2-3
 All Modes Overview	4
Total Weekday, Saturday and Sunday Monthly Boardings By Mode – March 2015	5
Average Weekday, Saturday and Sunday Boardings by Mode – March 2015	6
All-Modes Combined Total Monthly Ridership Comparisons By Fiscal Year	7
All Modes Combined Total Monthly and Average Weekday Ridership – Year over Year	
Comparison Charts	8
Metrobus, Metrorail, Metromover and Special Transportation Services (STS) Total Monthly	
Ridership Comparisons by Fiscal Year	9
Modal Splits	10
 Metrobus	11
Monthly and Average Daily Bus Boardings by Route	12-14
Cumulative Percentage Average Weekday Ridership Share – Top 1/4, 1/3, 1/2 and 2/3 of Routes	15
Average Weekday Bus Ridership – Year over Year Comparison Charts	16
Bus “Top 10 / Bottom 10” Routes Average Weekday Ridership Performance	17
Metrobus Parking Patronage Summary	18

Table of Contents (continued)

Metrorail	19
Monthly and Average Daily Rail Boardings by Station	20
Cumulative Percentage Average Weekday Ridership Share – Top 1/4, 1/3, 1/2 and 2/3 of Stations	21
Total Monthly and Average Weekday Rail Ridership – Year over Year Comparison Charts	22
“Top 5 / Bottom 5” Stations Average Weekday Ridership Performance	23
Metrorail Parking Patronage Summary	24
Metromover	25
Monthly and Average Daily Mover Boardings by Station	26
Cumulative Percentage Average Weekday Ridership Share – Top 1/4, 1/3, 1/2 and 2/3 of Stations	27
Average Weekday Mover Ridership – Year over Year Comparison Charts	28
“Top 5 / Bottom 5” Stations Average Weekday Ridership Performance	29
Special Transportation Services (STS)	30
Total Monthly and Average Weekday STS Ridership – Year over Year Comparison Charts	31

All Modes Overview



March 2015

**TOTAL WEEKDAY, SATURDAY AND SUNDAY BOARDINGS BY MODE
MARCH 2015**

TRAVEL MODE	TOTAL WEEKDAY RIDERSHIP	TOTAL SATURDAY RIDERSHIP	TOTAL SUNDAY RIDERSHIP	TOTAL RIDERSHIP	% CHANGE vs. MARCH 2014 TOTAL RIDERSHIP
METROBUS	5,478,734	599,809	547,221	6,625,764	-0.13%
METRORAIL	1,707,781	152,909	135,531	1,996,221	3.28%
METROMOVER	769,463	121,172	89,506	980,141	3.08%
STS (1)	125,051	9,383	9,583	144,017	2.10%
TOTAL	8,081,029	883,273	781,841	9,746,143	0.90%

(1) March STS data may not be complete - preliminary submittal

**AVERAGE WEEKDAY, SATURDAY AND SUNDAY BOARDINGS BY MODE
MARCH 2015**

Travel Mode	Average Weekday	Average Saturday	Average Sunday	% Change vs. Mar 2014 Weekday	% Change vs. Mar 2014 Saturday	% Change vs. Mar 2014 Sunday
METROBUS	249,100	150,000	109,400	-0.68%	-4.21%	-6.58%
METRORAIL	77,600	38,200	27,100	1.44%	3.80%	-4.91%
METROMOVER	35,000	30,300	17,900	-0.85%	28.94%	-3.76%
STS (1)	5,700	2,300	1,900	0.00%	0.00%	0.00%
Totals (2)	367,400	220,800	156,300	-0.24%	0.73%	-5.90%

(1) March STS data may not be complete - preliminary submittal

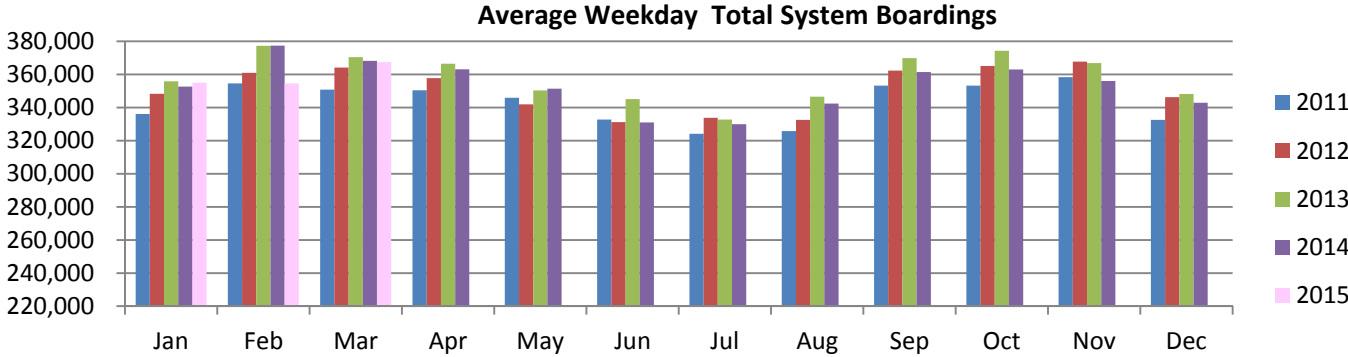
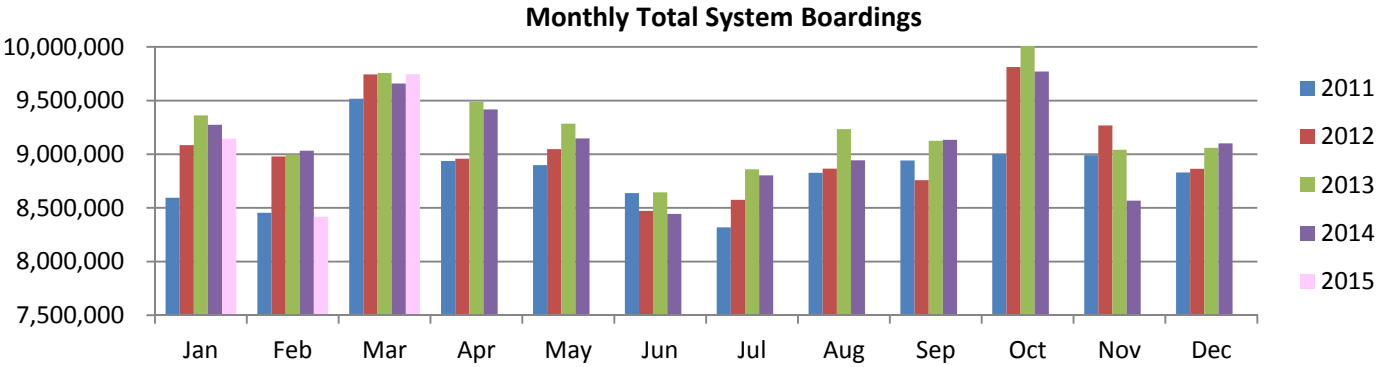
(2) Totals and component averages rounded to the nearest 100 boardings

ALL-MODES COMBINED TOTAL MONTHLY RIDERSHIP COMPARISONS BY FISCAL YEAR

	FISCAL YEARS					VARIANCES				
	FY 11	FY 12	FY 13	FY 14	FY 15	11 TO 12	12 TO 13	13 TO 14	14 TO 15	11 TO 15
OCT	8,838,476	9,002,012	9,813,214	10,068,544	9,771,384	1.9%	9.0%	2.6%	-3.0%	10.6%
NOV	8,489,529	8,990,810	9,269,022	9,041,288	8,566,872	5.9%	3.1%	-2.5%	-5.2%	0.9%
DEC	8,164,813	8,829,398	8,863,734	9,060,265	9,101,659	8.1%	0.4%	2.2%	0.5%	11.5%
JAN	8,593,756	9,085,398	9,362,506	9,274,756	9,144,662	5.7%	3.1%	-0.9%	-1.4%	6.4%
FEB	8,454,599	8,978,926	8,996,370	9,033,111	8,416,526	6.2%	0.2%	0.4%	-6.8%	-0.5%
MAR (1)	9,517,767	9,744,223	9,758,224	9,658,965	9,746,143	2.4%	0.1%	-1.0%	0.9%	2.4%
APR	8,936,651	8,957,761	9,488,659	9,417,913		0.2%	5.9%	-0.7%		
MAY	8,898,580	9,048,405	9,284,569	9,147,389		1.7%	2.6%	-1.5%		
JUN	8,637,675	8,472,882	8,645,403	8,443,226		-1.9%	2.0%	-2.3%		
JUL	8,318,717	8,575,539	8,860,373	8,802,869		3.1%	3.3%	-0.6%		
AUG	8,826,531	8,865,406	9,234,850	8,942,655		0.4%	4.2%	-3.2%		
SEP	8,941,820	8,758,408	9,125,077	8,923,721		-2.1%	4.2%	-2.2%		
TOTAL	104,618,912	107,309,168	110,702,001	109,814,701		2.6%	3.2%	-0.8%		

(1) March 2015 STS data may not be complete - preliminary submittal.

**TOTAL MONTHLY AND AVERAGE WEEKDAY RIDERSHIP
YEAR OVER YEAR COMPARISON CHARTS – ALL MODES COMBINED**



METROBUS, METRORAIL, METROMOVER AND STS TOTAL MONTHLY RIDERSHIP COMPARISONS BY FISCAL YEAR

Bus			Variance		Variance		Variance		Variance		Variance	
	FY 11	FY 12	11 to 12	FY 13	12 to 13	FY 14	13 to 14	FY 15	14 to 15	11 to 15		
OCT	6,390,609	6,518,325	2.0%	6,992,680	7.3%	7,110,756	1.7%	6,733,528	-5.3%	5.4%		
NOV	6,134,424	6,576,998	7.2%	6,620,453	0.7%	6,387,111	-3.5%	5,962,528	-6.6%	-2.8%		
DEC	5,923,317	6,487,763	9.5%	6,383,161	-1.6%	6,388,049	0.1%	6,299,190	-1.4%	6.3%		
JAN	6,207,368	6,632,074	6.8%	6,622,769	-0.1%	6,480,687	-2.1%	6,303,923	-2.7%	1.6%		
FEB	6,131,571	6,510,327	6.2%	6,409,954	-1.5%	6,285,016	-1.9%	5,745,141	-8.6%	-6.3%		
MAR	6,853,630	7,008,247	2.3%	6,808,012	-2.9%	6,634,261	-2.6%	6,625,764	-0.1%	-3.3%		
APR	6,445,422	6,470,131	0.4%	6,687,380	3.4%	6,564,892	-1.8%					
MAY	6,467,364	6,569,214	1.6%	6,562,097	-0.1%	6,398,839	-2.5%					
JUN	6,231,084	6,141,707	-1.4%	6,008,363	-2.2%	5,849,882	-2.6%					
JUL	6,024,821	6,206,639	3.0%	6,232,669	0.4%	6,113,620	-1.9%					
AUG	6,381,830	6,397,822	0.3%	6,579,651	2.8%	6,259,080	-4.9%					
SEP	6,532,365	6,309,027	-3.4%	6,476,776	2.7%	6,160,440	-4.9%					
TOTAL	75,723,805	77,828,274	2.8%	78,383,965	0.7%	76,632,633	-2.2%	37,670,074				

Rail			Variance		Variance		Variance		Variance		Variance	
	FY 11	FY 12	11 to 12	FY 13	12 to 13	FY 14	13 to 14	FY 15	14 to 15	11 to 15		
OCT	1,536,557	1,562,078	1.7%	1,828,768	17.1%	1,918,472	4.9%	1,976,097	3.0%	28.6%		
NOV	1,483,376	1,540,968	3.9%	1,704,093	10.6%	1,723,168	1.1%	1,706,362	-1.0%	15.0%		
DEC	1,409,454	1,487,052	5.5%	1,593,959	7.2%	1,722,115	8.0%	1,810,803	5.1%	28.5%		
JAN	1,499,324	1,571,314	4.8%	1,760,755	12.1%	1,820,300	3.4%	1,857,513	2.0%	23.9%		
FEB	1,474,145	1,566,839	6.3%	1,683,387	7.4%	1,784,117	6.0%	1,765,236	-1.1%	19.7%		
MAR	1,673,175	1,704,827	1.9%	1,903,432	11.6%	1,932,811	1.5%	1,996,221	3.3%	19.3%		
APR	1,575,829	1,594,087	1.2%	1,867,082	17.1%	1,900,743	1.8%					
MAY	1,538,200	1,562,507	1.6%	1,810,150	15.8%	1,814,954	0.3%					
JUN	1,504,918	1,446,176	-3.9%	1,699,845	17.5%	1,686,597	-0.8%					
JUL	1,400,466	1,475,744	5.4%	1,698,181	15.1%	1,725,647	1.6%					
AUG	1,523,878	1,604,091	5.3%	1,757,105	9.5%	1,741,692	-0.9%					
SEP	1,515,462	1,590,419	4.9%	1,731,647	8.9%	1,822,047	5.2%					
TOTAL	18,134,784	18,706,102	3.2%	21,038,404	12.5%	21,592,663	2.6%	11,112,232				

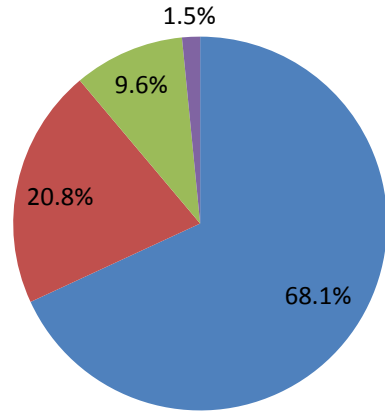
Mover			Variance		Variance		Variance		Variance		Variance	
	FY 11	FY 12	11 to 12	FY 13	12 to 13	FY 14	13 to 14	FY 15	14 to 15	11 to 15		
OCT	773,893	781,879	1.0%	837,145	7.1%	885,612	5.8%	908,681	2.6%	17.4%		
NOV	742,228	736,247	-0.8%	803,831	9.2%	796,012	-1.0%	768,595	-3.4%	3.6%		
DEC	712,394	724,504	1.7%	755,040	4.2%	819,462	8.5%	859,907	4.9%	20.7%		
JAN	759,232	744,511	-1.9%	835,870	12.3%	836,770	0.1%	847,910	1.3%	11.7%		
FEB	723,244	762,468	5.4%	766,316	0.5%	831,367	8.5%	776,527	-6.6%	7.4%		
MAR	848,970	884,318	4.2%	902,678	2.1%	950,840	5.3%	980,141	3.1%	15.5%		
APR	779,519	753,146	-3.4%	786,015	4.4%	806,409	2.6%					
MAY	756,004	768,700	1.7%	764,493	-0.5%	789,168	3.2%					
JUN	766,173	747,354	-2.5%	800,003	7.0%	770,303	-3.7%					
JUL	766,799	754,501	-1.6%	787,453	4.4%	823,317	4.6%					
AUG	783,616	724,021	-7.6%	757,563	4.6%	805,298	6.3%					
SEP	755,038	720,782	-4.5%	775,004	7.5%	798,525	3.0%					
TOTAL	9,167,109	9,102,431	-0.7%	9,571,411	5.2%	9,913,083	3.6%	5,141,762				

STS			Variance		Variance		Variance		Variance		Variance	
	FY 11	FY 12	11 to 12	FY 13	12 to 13	FY 14	13 to 14	FY 15	14 to 15	11 to 15		
OCT	137,417	139,730	1.7%	154,621	10.7%	153,704	-0.6%	153,078	-0.4%	11.4%		
NOV	129,501	136,597	5.5%	140,645	3.0%	134,997	-4.0%	129,387	-4.2%	-0.1%		
DEC	119,648	130,079	8.7%	131,574	1.1%	130,639	-0.7%	131,759	0.9%	10.1%		
JAN	127,832	137,499	7.6%	143,112	4.1%	136,999	-4.3%	135,316	-1.2%	5.9%		
FEB	125,639	139,292	10.9%	136,713	-1.9%	132,611	-3.0%	129,622	-2.3%	3.2%		
MAR (1)	141,992	146,831	3.4%	144,102	-1.9%	141,053	-2.1%	144,017	2.1%	1.4%		
APR	135,881	140,397	3.3%	148,182	5.5%	145,869	-1.6%					
MAY	137,012	147,984	8.0%	147,829	-0.1%	144,428	-2.3%					
JUN	135,500	137,645	1.6%	137,192	-0.3%	136,444	-0.5%					
JUL	126,631	138,655	9.5%	142,070	2.5%	140,285	-1.3%					
AUG	137,207	139,472	1.7%	140,531	0.8%	136,585	-2.8%					
SEP	138,955	138,180	-0.6%	141,650	2.5%	142,709	0.7%					
TOTAL	1,593,215	1,672,361	5.0%	1,708,221	2.1%	1,676,323	-1.9%	823,179				

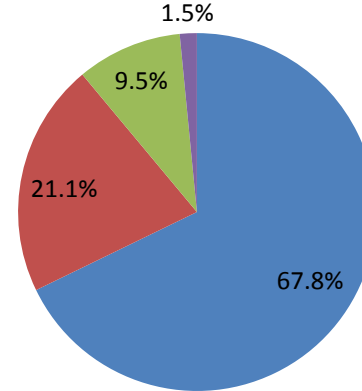
(1) March 2015 STS data may not be complete; preliminary submittal.

MODAL SPLITS

March 2014



March 2015



March 2015

Metrobus



March 2015

METROBUS MONTHLY AND AVERAGE DAILY BOARDINGS BY ROUTE

Route	Average Weekday	Average Weekday	Percent Change	Average Saturday	Average Saturday	Percent Change	Average Sunday	Average Sunday	Percent Change	Total Monthly	Total Monthly	Percent Change
	Mar-15	Mar-14	15 vs 14	Mar-15	Mar-14	15 vs 14	Mar-15	Mar-14	15 vs 14	Mar-15	Mar-14	15 vs 14
1	661	567	17%	426	539	-21%	381	405	-6%	18,155	16,619	9%
2	2,929	2,908	1%	1,715	1,840	-7%	1,122	1280	-12%	76,894	76,665	0%
3	8,435	8,432	0%	8,068	8,767	-8%	6,424	6957	-8%	249,965	255,694	-2%
6	723	781	-7%	512	594	-14%	473	498	-5%	20,315	21,866	-7%
7	4,777	4,468	7%	2,841	3,333	-15%	2,139	2198	-3%	127,159	121,493	5%
8	7,825	7,853	0%	4,557	4,897	-7%	2,870	3029	-5%	204,716	204,539	0%
9	6,128	6,667	-8%	3,803	4,277	-11%	2,733	3270	-16%	163,701	177,736	-8%
10	2,831	2,909	-3%	2,330	2,515	-7%	1,625	1496	9%	79,736	81,144	-2%
11	12,918	12,687	2%	10,073	10,483	-4%	7,023	7915	-11%	359,600	358,409	0%
12	3,240	3,272	-1%							71,271	68,702	4%
16	2,861	3,244	-12%	2,371	2,273	4%	1,395	1,440	-3%	79,398	86,690	-8%
17	4,877	4,864	0%	2,984	3,215	-7%	2,160	2,135	1%	130,032	128,891	1%
19	2,345	2,095	12%							51,584	43,986	17%
21	2,331	2,349	-1%							51,275	49,336	4%
22	5,114	5,280	-3%	2,745	3,256	-16%	2,183	2,398	-9%	134,398	139,152	-3%
24	2,763	2,717	2%	1,878	1,735	8%	1,594	1,605	-1%	76,271	73,764	3%
27	9,344	10,181	-8%	6,468	6,783	-5%	4,169	4,672	-11%	252,284	271,080	-7%
29	889	859	3%							19,548	18,033	8%
31 - BUSWAY LOCAL	2,294	2,099	9%	1,320	1,226	8%	1,024	972	5%	60,874	55,079	11%
32	3,394	3,464	-2%	1,568	1,395	12%	1,080	943	14%	86,334	84,443	2%
33	2,098	2,214	-5%	1,260	1,369	-8%	771	778	-1%	55,046	57,234	-4%
34 - BUSWAY FLYER	2,299	1,686	36%							50,582	35,403	43%
35	2,906	3,148	-8%	800	1,506	-47%	552	1,085	-49%	69,882	79,075	-12%
36	3,176	2,968	7%	1,759	1,704	3%	1,375	1,328	4%	83,785	77,495	8%
37	4,276	4,232	1%	3,256	3,217	1%	2,484	2,511	-1%	119,526	117,506	2%
38 - BUSWAY MAX	8,334	8,175	2%	6,826	6,136	11%	5,186	5,202	0%	236,589	228,371	4%
40	2,710	2,485	9%	1,163	1,209	-4%	730	766	-5%	67,915	62,063	9%
42	1,817	1,787	2%	1,104	1,214	-9%	642	721	-11%	47,594	47,211	1%
46 - LIBERTY CITY CONN.	58	113	-49%							1,279	2,379	-46%
48	306	292	5%							6,741	6,130	10%
51 - FLAGLER MAX	3,974	3,788	5%							87,417	79,551	10%
52	1,835	1,930	-5%	1,029	1,080	-5%	714	719	-1%	48,057	49,528	-3%
54	4,105	3,975	3%	2,350	2,748	-15%	1,603	1,723	-7%	107,712	105,831	2%
56	764	811	-6%							16,801	17,026	-1%
57	669	576	16%							14,720	12,105	22%

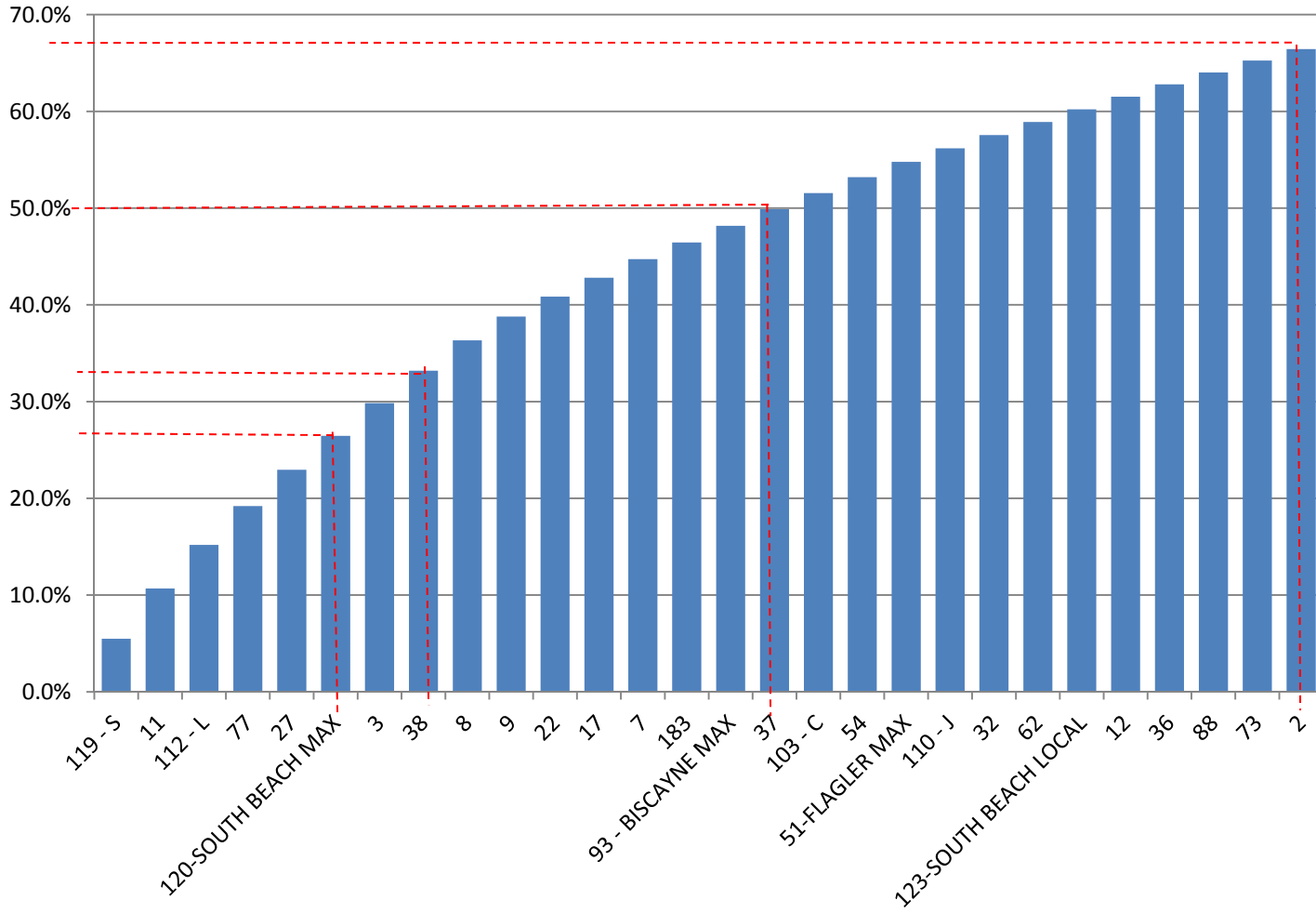
METROBUS MONTHLY AND AVERAGE DAILY BOARDINGS BY ROUTE

Route	Average Weekday	Average Weekday	Percent Change	Average Saturday	Average Saturday	Percent Change	Average Sunday	Average Sunday	Percent Change	Total Monthly	Total Monthly	Percent Change
	Mar-15	Mar-14	15 vs 14	Mar-15	Mar-14	15 vs 14	Mar-15	Mar-14	15 vs 14	Mar-15	Mar-14	15 vs 14
62	3,370	3,295	2%	2,177	2,200	-1%	1,196	1,485	-19%	88,836	87,615	1%
70	1,486	1,454	2%	1,437	970	48%	1,138	699	63%	44,126	38,868	14%
71	1,178	1,331	-11%	534	510	5%	303	210	44%	29,567	31,547	-6%
72	1,141	1,131	1%	754	674	12%	485	476	2%	30,535	29,507	3%
73	3,056	2,675	14%	1,206	1,153	5%	661	669	-1%	75,361	65,289	15%
75	1,940	1,899	2%	722	813	-11%	328	438	-25%	47,200	46,125	2%
77	10,006	10,585	-5%	5,779	6,765	-15%	3,130	3,872	-19%	258,892	275,483	-6%
79	633	591	7%							13,922	12,402	12%
87	2,269	2,177	4%	742	801	-7%	445	495	-10%	55,102	52,190	6%
88	3,085	2,791	11%	2,264	1,987	14%	1,695	1,653	3%	85,397	76,817	11%
93 - BISCAYNE MAX	4,295	4,442	-3%							94,487	93,277	1%
95 EXPRESS	2,291	2,456	-7%							50,400	51,584	-2%
99	2,136	2,201	-3%	1,291	1,279	1%	836	958	-13%	56,342	57,396	-2%
101 - A	165	776	-79%	63	445	-86%	38	367	-90%	4,082	20,356	-80%
102 - B	2,399	2,306	4%	1,563	1,518	3%	1,251	1,300	-4%	65,280	62,503	4%
103 - C	4,127	4,152	-1%	3,515	3,297	7%	2,493	2,503	0%	117,315	116,192	1%
104	1,513	1,523	-1%	728	726	0%	434	427	2%	38,365	37,749	2%
105 - E	1,860	1,824	2%	1,170	1,059	10%	914	970	-6%	50,167	48,440	4%
107 - G	2,120	1,932	10%	1,445	1,604	-10%	983	1,262	-22%	57,336	54,896	4%
108 - H	2,214	2,131	4%	1,739	1,650	5%	1,231	1,446	-15%	61,830	60,240	3%
110 - J	3,483	3,446	1%	2,581	2,671	-3%	2,131	2,035	5%	97,602	95,899	2%
112 - L	11,230	11,516	-2%	8,602	9,075	-5%	6,474	6,844	-5%	313,844	321,440	-2%
113 - M	1,134	989	15%	684	620	10%	542	526	3%	30,395	26,509	15%
115	478	531	-10%							10,505	11,151	-6%
117	479	514	-7%							10,538	10,791	-2%
119 - S	13,672	14,601	-6%	10,503	11,510	-9%	10,055	10,955	-8%	393,072	418,939	-6%
120 - SOUTH BEACH MAX	8,746	9,060	-3%	7,122	7,412	-4%	4,208	4,715	-11%	241,930	250,894	-4%
123 - SOUTH BEACH LOCAL	3,269	3,325	-2%	2,621	2,838	-8%	2,390	2,560	-7%	94,353	96,812	-3%
132 TRI-RAIL (DORAL)	38	53	-28%							844	1,103	-23%
133 TRI-RAIL (AIRPORT)	506	816	-38%	153	540	-72%	156	409	-62%	12,536	21,884	-43%
135	1,731	1,853	-7%	660	816	-19%	528	580	-9%	43,361	45,900	-6%
136	398	357	11%							8,751	7,504	17%
137 - WEST DADE CONN.	2,479	2,397	3%	1,656	1,655	0%	1,206	1,196	1%	67,180	64,595	4%
150 - MIAMI BEACH AIRPORT FLYER	2,001	1,512	32%	1,937	1,509	28%	1,822	1,487	23%	60,880	46,726	30%

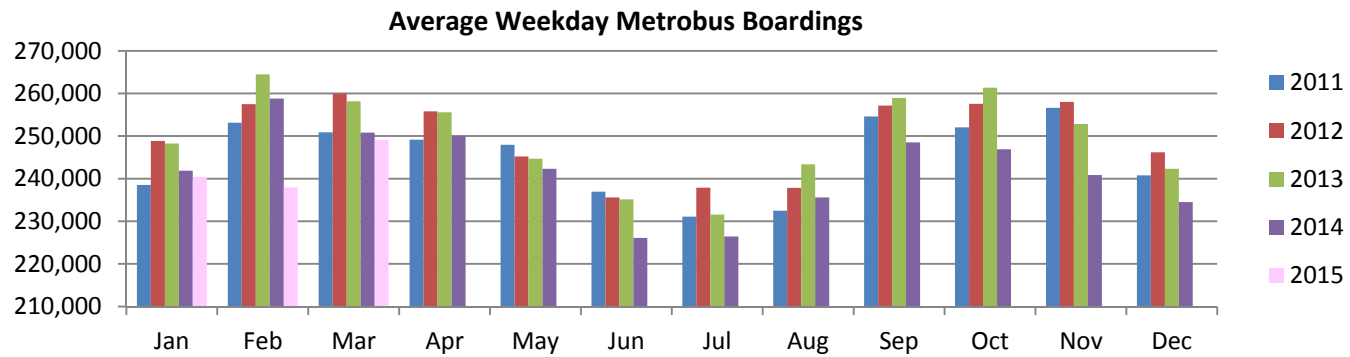
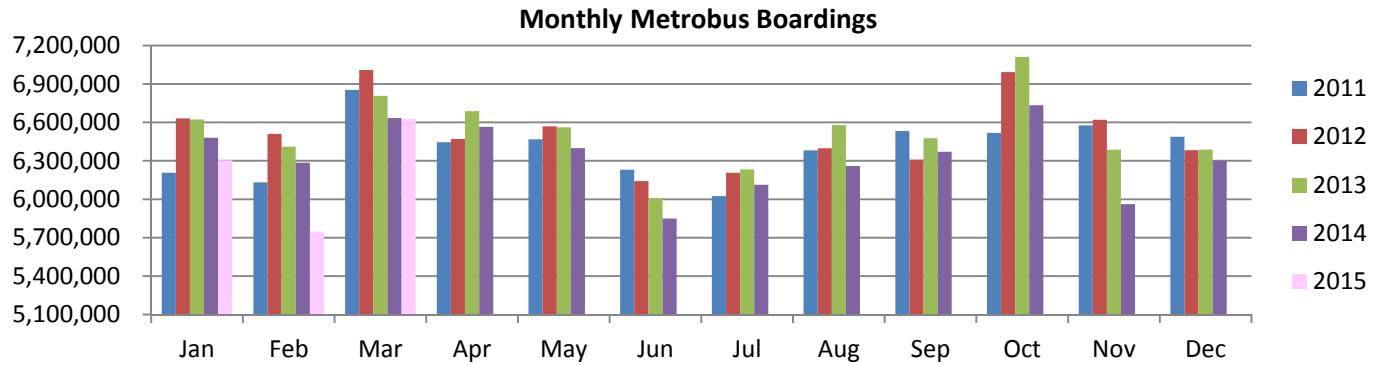
METROBUS MONTHLY AND AVERAGE DAILY BOARDINGS BY ROUTE

Route	Average	Average	Percent	Average	Average	Percent	Average	Average	Percent	Total	Total	Percent
	Weekday	Weekday	Change	Saturday	Saturday	Change	Sunday	Sunday	Change	Monthly	Monthly	Change
	Mar-15	Mar-14	15 vs 14	Mar-15	Mar-14	15 vs 14	Mar-15	Mar-14	15 vs 14	Mar-15	Mar-14	15 vs 14
183	4,307	4,511	-5%	2,688	2,991	-10%	2,010	1,967	2%	115,546	119,518	-3%
195 DADE-BROWARD EXPRESS	1,200	1,289	-7%							26,410	27,078	-2%
200 - CUTLER BAY LOCAL	97	72	34%	74						2,422	577	320%
202 - LITTLE HAITI CONN.	229	208	10%	126	109	16%	94	128	-26%	6,009	5,554	8%
204 KILLIAN KAT	1,622	1,408	15%							35,692	29,564	21%
207 (7st) - LITTLE HAVANA CIRC.	2,082	1,833	14%							45,793	38,490	19%
208 (8st) - LITTLE HAVANA CIRC.	2,093	2,552	-18%							46,035	53,587	-14%
211 - OVERTOWN CIRC	140	155	-10%							3,078	3,260	-6%
212 - SWEETWATER CIRC.	128	119	7%							2,812	2,492	13%
238 EAST/WEST CONN.	515	526	-2%							11,340	11,047	3%
246 - NIGHT OWL	63	103	-39%	75	129	-42%	75	113	-34%	2,053	3,377	-39%
249 - COCONUT GROVE CIRC.	1,252	1,370	-9%	820	937	-12%	586	691	-15%	33,753	36,917	-9%
252 - CORAL REEF MAX	1,286	1,218	6%	497	516	-4%	338	344	-2%	31,963	29,883	7%
254 - BROWNSVILLE CIRC.	36	38	-6%							787	806	-2%
267 - LUDLAM LIMITED	167	164	2%							3,672	3,435	7%
272 SUNSET KAT	783	708	11%							17,230	14,878	16%
277 - 7th AVENUE MAX	1,034	1,024	1%							22,743	21,497	6%
286 - NORTH POINTE CIRC.	148	118	25%	93	89	4%				3,622	2,922	24%
287 - SAGA BAY MAX	496	463	7%							10,918	9,731	12%
288 - KENDALL CRUISER	1,086	795	37%							23,887	16,697	43%
297 - 27th AVENUE ENHANCED BUS	2,023	2,087	-3%							44,504	43,820	2%
301 DADE-MONROE EXPRESS	981	1,087	-10%	957	936	2%	812	928	-13%	29,469	32,150	-8%
302 CARD SOUND EXPRESS	98	107	-8%	85	75	13%	56	71	-21%	2,781	2,991	-7%
338				247	250	-1%	238	215	11%	2,178	2,326	-6%
344	142	168	-15%							3,129	3,535	-11%
500	79	83	-4%	90	128	-29%	94	99	-5%	2,573	2,881	-11%
115/117 WEEKEND INTERL.				474	478	-1%	446	526	-15%	4,124	5,017	-18%
12/21 WEEKEND INTERL.				3,181	3,249	-2%	2,372	2,575	-8%	24,584	29,116	-16%
207/208 WEEKEND INTERL.				3,677	3,359	9%	2,798	2,854	-2%	28,698	31,061	-8%
GREEN HILLS SHUTTLE	3	4	-15%							17	20	-15%
KINGS CREEK SHUTTLE	13	13	0%							52	52	0%
SIERRA LAKES SHUTTLE	29	19	53%							116	77	51%
ROBERT SHARPE SHUTTLE	17	13	29%							67	50	34%
AHEPA SHUTTLE	34	19	76%							134	76	76%
FEDERATION GARDENS SHUTTLE				21	19	11%				84	95	-12%
Total	249,111	250,792	-0.7%	149,952	156,673	-4.3%	109,444	117,086	-6.5%	6,625,764	6,633,429	-0.1%

**Bus - Cumulative Percentage Average Weekday Ridership Share
Top 1/4, 1/3, 1/2 and 2/3 of Routes**



TOTAL MONTHLY AND AVERAGE WEEKDAY RIDERSHIP YEAR OVER YEAR COMPARISON CHARTS – METROBUS



**“TOP 10 / BOTTOM 10” BUS ROUTES AVERAGE WEEKDAY RIDERSHIP PERFORMANCE
YEAR OVER YEAR COMPARISONS**

Route	Mar-15	Mar-14	Absolute Delta	Percent Delta
34-BUSWAY FLYER	2,299	1,686	613	36.4%
150-MIAMI BEACH AIRPORT FLYER	2,001	1,512	489	32.4%
73	3,056	2,675	381	14.2%
7	4,777	4,468	309	6.9%
88	3,085	2,791	294	10.5%
288 KENDALL CRUISER	1,086	795	291	36.6%
19	2,345	2,095	250	11.9%
207(7st)-LITTLE HAVANA CIRC	2,082	1,833	249	13.6%
11	12,918	12,687	231	1.8%
40	2,710	2,485	225	9.0%
119 - S	13,672	14,601	-929	-6.4%
27	9,344	10,181	-837	-8.2%
77	10,006	10,585	-580	-5.5%
9	6,128	6,667	-538	-8.1%
208(8st)-LITTLE HAVANA CIRC	2,093	2,552	-459	-18.0%
16	2,861	3,244	-383	-11.8%
120-SOUTH BEACH MAX	8,746	9,060	-314	-3.5%
112 - L	11,230	11,516	-286	-2.5%
35	2,906	3,148	-243	-7.7%
183	4,307	4,511	-204	-4.5%

**METROBUS PARKING PATRONAGE SUMMARY
MARCH 2015**

PARK-RIDE LOT	ACTUAL AVAILABLE SPACES	ACTUAL OCCUPANCY	PERCENT OCCUPANCY
BUSWAY/SW 152nd ST.	200	189	95%
BUSWAY/SW 168TH STREET	149	149	100%
BUSWAY/SW 244TH STREET	95	77	81%
BUSWAY/SW 296TH STREET	139	116	83%
CORAL REEF DRIVE 117/TURNPIKE	95	48	51%
GOLDEN GLADES-EAST LOT (effective 12/2009)	535	172	32%
GOLDEN GLADES-WEST LOT (effective 12/2009)	1,007	703	70%
HAMMOCKS TOWN CENTER (SW 152nd AVE./SW 104th ST.)	50	50	100%
KENDALL DRIVE SW 150th AVENUE - (effective 8/23/2010)	109	14	13%
TARGET (BUSWAY/SW 112 AVE.) - (effective 7/2009)	450	190	42%
WEST KENDALL TRANSIT TEAM (KENDALL/SW 162 AVE) - (effective 3/2011)	40	33	83%
MIAMI GARDENS DR./NW 73 AVENUE - (effective 7/2011)	136	44	32%
TOTAL	3,005	1,785	59%

Metrorail



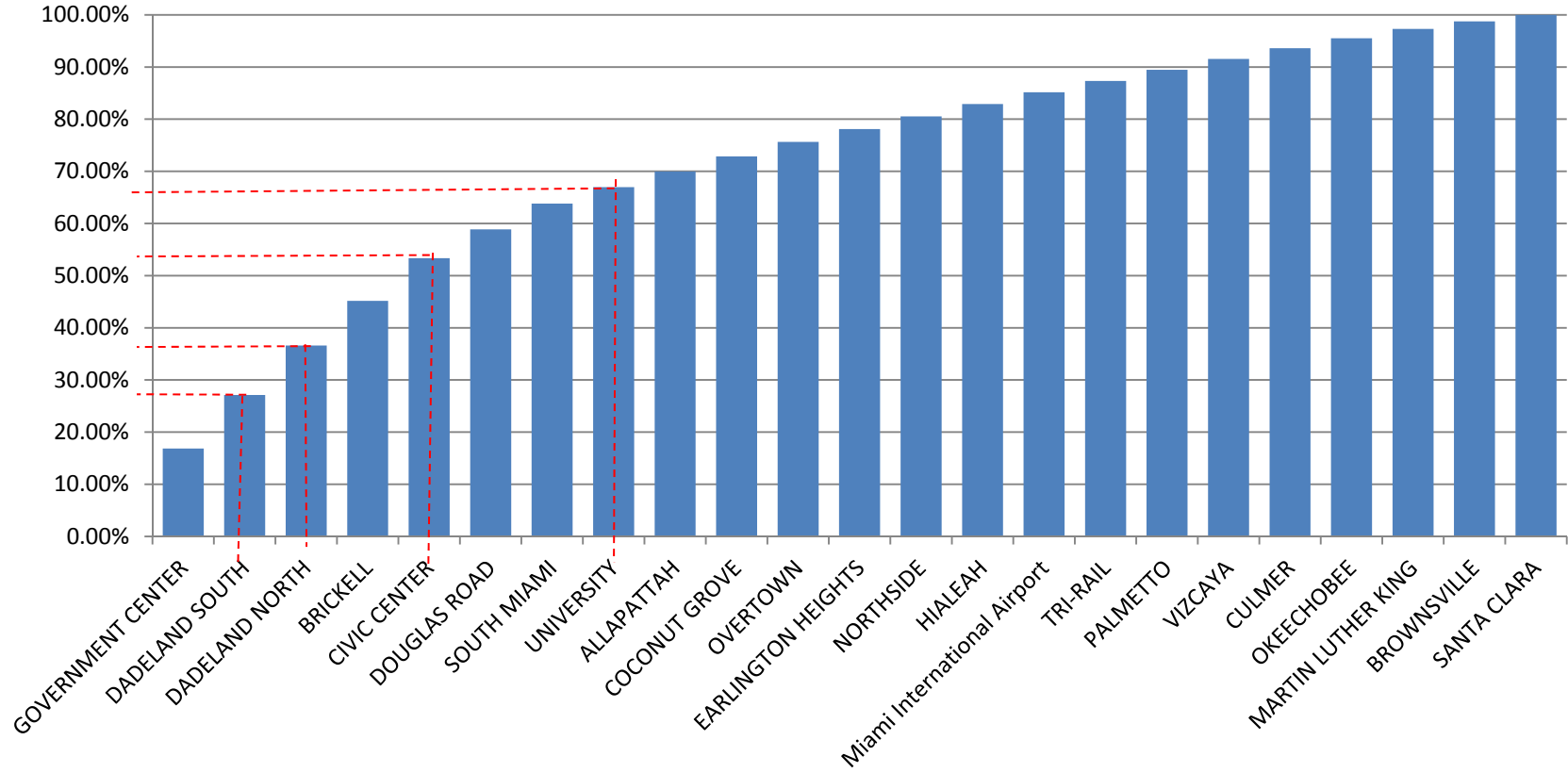
March 2015

19

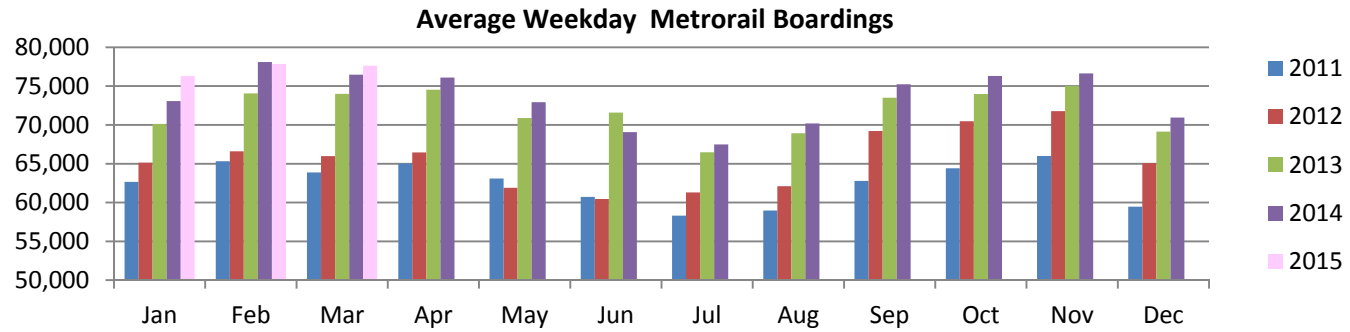
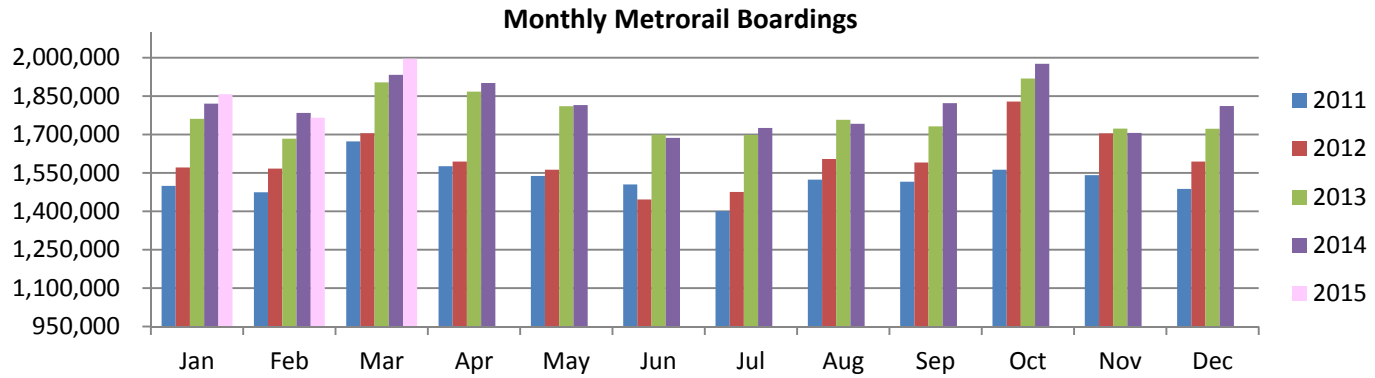
METRORAIL MONTHLY AND AVERAGE DAILY BOARDINGS BY STATION

Station	Average Weekday	Average Weekday	Percent Change	Average Saturday	Average Saturday	Percent Change	Average Sunday	Average Sunday	Percent Change	Total Monthly	Total Monthly	Percent Change
	Mar-15	Mar-14	15 vs 14	Mar-15	Mar-14	15 vs 14	Mar-15	Mar-14	15 vs 14	Mar-15	Mar-14	15 vs 14
ALLAPATTAH	2,346	2,234	5.0%	1,452	1,397	4.0%	1,038	1,012	2.6%	62,600	58,966	6.2%
BRICKELL	6,655	6,078	9.5%	3,092	2,973	4.0%	2,459	2,651	-7.2%	171,066	155,754	9.8%
BROWNSVILLE	1,113	1,114	-0.1%	729	748	-2.6%	611	491	24.4%	30,446	29,584	2.9%
CIVIC CENTER	6,351	6,250	1.6%	1,126	1,013	11.1%	903	828	9.0%	148,733	140,449	5.9%
COCONUT GROVE	2,230	2,244	-0.6%	1,387	1,431	-3.1%	1,046	1,101	-5.0%	59,845	59,781	0.1%
CULMER	1,606	1,553	3.4%	842	838	0.4%	623	657	-5.2%	41,813	40,088	4.3%
DADELAND NORTH	7,356	7,195	2.2%	3,246	3,122	4.0%	2,097	2,233	-6.1%	185,290	177,881	4.2%
DADELAND SOUTH	7,958	8,036	-1.0%	3,660	3,577	2.3%	2,569	2,850	-9.9%	202,561	200,902	0.8%
DOUGLAS ROAD	4,284	4,406	-2.8%	2,002	2,082	-3.8%	1,349	1,556	-13.3%	109,001	110,717	-1.5%
EARLINGTON HEIGHTS	1,921	1,863	3.1%	1,170	1,198	-2.4%	883	894	-1.2%	51,353	49,595	3.5%
GOVERNMENT CENTER	13,094	13,163	-0.5%	7,199	6,696	7.5%	4,588	5,196	-11.7%	339,801	335,888	1.2%
HIALEAH	1,852	1,814	2.1%	978	1,008	-3.0%	690	679	1.6%	48,098	46,516	3.4%
DR. MARTIN LUTHER KING, JR.	1,396	1,545	-9.7%	945	1,015	-6.9%	561	680	-17.5%	37,290	40,925	-8.9%
MIAMI INTERNATIONAL AIRPORT	1,744	1,699	2.6%	1,491	1,427	4.5%	1,521	1,481	2.7%	51,944	50,229	3.4%
NORTHSIDE	1,872	1,662	12.6%	1,202	815	47.4%	912	577	58.0%	50,545	41,872	20.7%
OKEECHOBEE	1,476	1,492	-1.1%	575	564	1.8%	381	388	-1.9%	36,674	36,101	1.6%
OVERTOWN / ARENA	2,154	1,997	7.9%	834	683	22.1%	592	571	3.7%	53,693	48,213	11.4%
PALMETTO	1,639	1,558	5.2%	675	542	24.4%	357	387	-7.8%	40,544	37,372	8.5%
SANTA CLARA	974	963	1.2%	563	558	0.7%	366	359	1.9%	25,516	24,810	2.8%
SOUTH MIAMI	3,850	3,827	0.6%	1,948	2,006	-2.9%	1,333	1,443	-7.7%	99,159	97,615	1.6%
TRI-RAIL	1,699	1,643	3.4%	1,059	1,079	-1.9%	860	932	-7.8%	45,913	44,548	3.1%
UNIVERSITY	2,434	2,502	-2.7%	1,198	1,191	0.6%	762	908	-16.1%	62,147	63,026	-1.4%
VIZCAYA	1,624	1,640	-1.0%	858	880	-2.5%	605	628	-3.7%	42,189	41,979	0.5%
TOTAL	77,626	76,480	1.5%	38,227	36,844	3.8%	27,106	28,503	-4.9%	1,996,221	1,932,811	3.3%

Metrorail - Cumulative Percentage Ridership Share Top 1/4, 1/3, 1/2 and 2/3 of Stations



TOTAL MONTHLY AND AVERAGE WEEKDAY RIDERSHIP YEAR OVER YEAR COMPARISON CHARTS – METRORAIL



**“TOP 5 / BOTTOM 5” RAIL STATIONS AVERAGE WEEKDAY RIDERSHIP PERFORMANCE
YEAR OVER YEAR COMPARISONS**

Station	Mar-15	Mar-14	Absolute Delta	Percent Delta
BRICKELL	6,655	6,078	577	9%
NORTHSIDE	1,872	1,662	209	13%
DADELAND NORTH	7,356	7,195	160	2%
OVERTOWN	2,154	1,997	157	8%
ALLAPATTAH	2,346	2,234	111	5%
DR. MARTIN LUTHER KING JR.	1,396	1,545	-150	-10%
DOUGLAS ROAD	4,284	4,406	-122	-3%
DADELAND SOUTH	7,958	8,036	-78	-1%
GOVERNMENT CENTER	13,094	13,163	-69	-1%
UNIVERSITY	2,434	2,502	-68	-3%

**METRORAIL PARKING PATRONAGE SUMMARY
MARCH 2015**

STATION	AVAILABLE PARKING SPACES	AVERAGE WEEKDAY	PERCENT OCCUPANCY
DADELAND SOUTH	1,290	1,241	96%
DADELAND NORTH	1,963	1,921	98%
SOUTH MIAMI	1,729	843	49%
UNIVERSITY	230	203	88%
DOUGLAS ROAD	220	215	98%
COCONUT GROVE	204	103	51%
VIZCAYA	120	60	50%
SANTA CLARA	61	51	83%
ALLAPATTAH	74	17	23%
EARLINGTON HEIGHTS	361	104	29%
BROWNSVILLE	100	20	20%
MARTIN LUTHER KING(MDT)	62	49	79%
MARTIN LUTHER KING(GARAGE)	631	217	34%
NORTHSIDE	100	74	74%
HIALEAH	338	83	24%
OKEECHOBEE	1,398	341	24%
PALMETTO	700	371	53%
TOTAL	9,581	5,913	62%

Note: No parking at Brickell, Government Center, Civic Center, Culmer and Tri-Rail stations.

Metromover



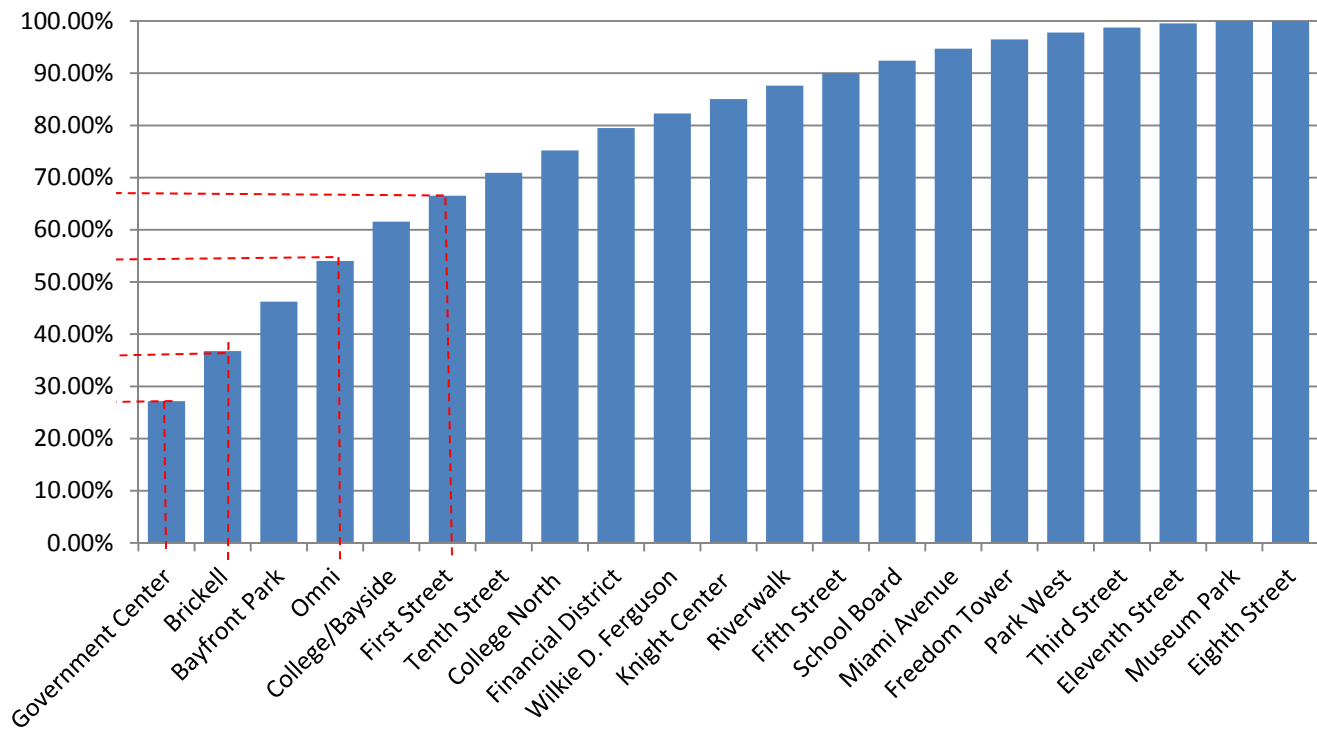
March 2015

METROMOVER MONTHLY AND AVERAGE DAILY BOARDINGS BY STATION

Station	Average Weekday	Average Weekday	Percent Change	Average Saturday	Average Saturday	Percent Change	Average Sunday	Average Sunday	Percent Change	Total Monthly	Total Monthly	Percent Change
	Mar-15	Mar-14	15 vs 14	Mar-15	Mar-14	15 vs 14	Mar-15	Mar-14	15 vs 14	Mar-15	Mar-14	15 vs 14
School Board	830	680	22.0%	642	587	9.3%	1,132	597	89.6%	26,494	20,210	31.1%
Omni	2,728	3,184	-14.3%	3,559	2,755	29.2%	1,566	1,972	-20.6%	82,080	90,492	-9.3%
Museum Park	157	210	-25.3%	747	206	262.4%	123	203	-39.3%	7,053	6,453	9.3%
Eleventh Street	282	362	-22.1%	950	307	209.5%	243	273	-10.9%	11,210	10,494	6.8%
Park West	456	368	23.8%	1,045	325	221.6%	415	314	32.1%	16,276	10,923	49.0%
Freedom Tower	623	634	-1.6%	1,982	709	179.5%	560	585	-4.3%	24,440	19,775	23.6%
Government Center	9,505	9,979	-4.7%	3,685	3,344	10.2%	2,163	2,550	-15.2%	234,675	239,033	-1.8%
Miami Avenue	800	859	-6.9%	572	532	7.6%	440	402	9.6%	22,082	22,703	-2.7%
Third Street	335	386	-13.2%	326	300	8.7%	218	236	-7.6%	9,759	10,778	-9.5%
Knight Center	965	890	8.5%	536	479	11.8%	321	369	-13.1%	24,981	22,926	9.0%
Bayfront Park	3,309	3,492	-5.2%	3,695	3,055	20.9%	2,240	2,196	2.0%	98,774	99,574	-0.8%
First Street	1,737	1,735	0.1%	1,729	1,661	4.1%	1,292	1,458	-11.4%	51,577	52,025	-0.9%
College/Bayside	2,636	2,794	-5.7%	2,910	2,682	8.5%	1,875	2,117	-11.4%	79,005	82,665	-4.4%
College North	1,501	1,346	11.5%	714	587	21.5%	462	396	16.6%	38,187	33,176	15.1%
Wilkie D. Ferguson	971	1,082	-10.2%	721	743	-3.1%	519	573	-9.4%	26,841	29,296	-8.4%
Riverwalk	897	856	4.7%	783	609	28.6%	564	545	3.4%	25,677	23,753	8.1%
Fifth Street	852	594	43.3%	511	416	22.8%	336	321	4.6%	22,459	16,169	38.9%
Eighth Street		1,136			678			529			29,892	
Tenth Street	1,535	966	58.9%	1,404	746	88.1%	857	597	43.5%	43,677	27,001	61.8%
Brickell	3,358	3,143	6.8%	2,658	2,250	18.1%	1,939	1,938	0.0%	94,201	86,944	8.3%
Financial District	1,500	571	162.9%	1,126	519	116.8%	636	395	60.8%	40,694	16,558	145.8%
TOTAL	34,976	35,264	-0.8%	30,293	23,492	28.9%	17,901	18,567	-3.6%	980,141	950,840	3.1%

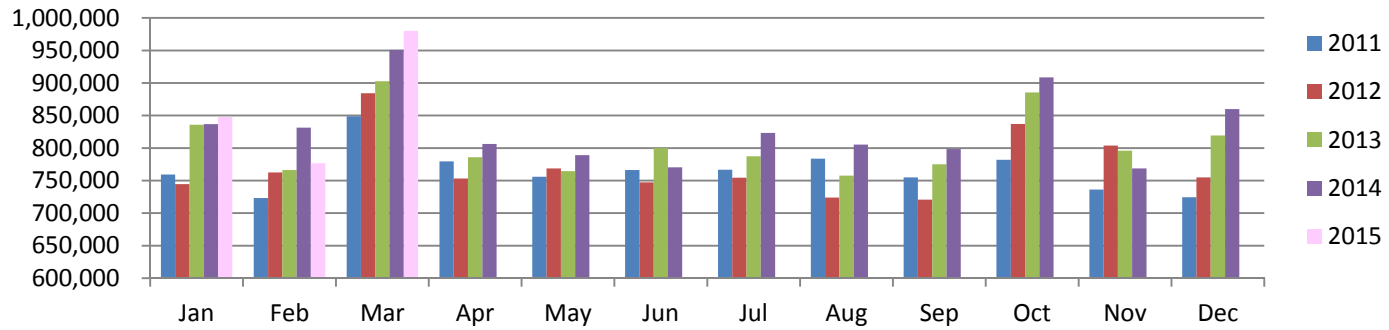
Note: Eighth Street station is closed until Summer 2015 due to construction. Bicentennial Park station was reopened as Museum Park in December 2013. Boardings at various stations contain estimates based on other data within March 2015. There have been closings and early closures due to construction.

Metromover - Cumulative Average Weekday Ridership Percentage Share Top 1/4, 1/3, 1/2 and 2/3 of Stations

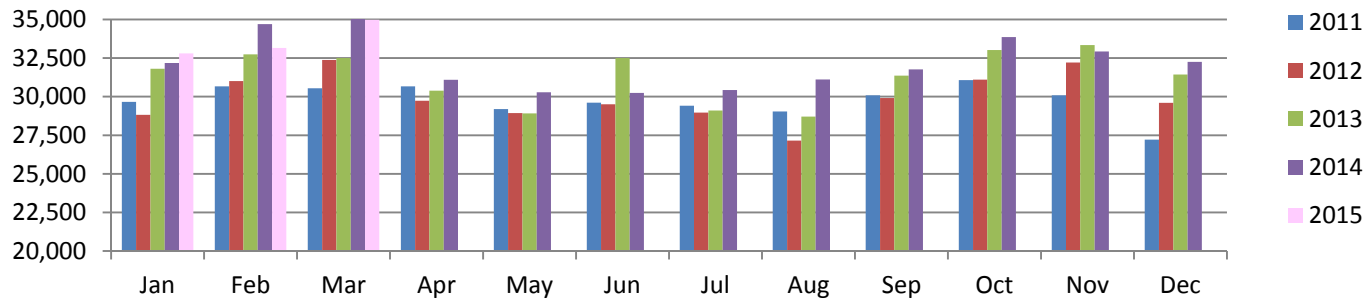


TOTAL MONTHLY AND AVERAGE WEEKDAY RIDERSHIP YEAR OVER YEAR COMPARISON CHARTS – METROMOVER

Monthly Metromover Boardings



Average Weekday Metromover Boardings



**“TOP 5 / BOTTOM 5” MOVER STATIONS AVERAGE WEEKDAY RIDERSHIP PERFORMANCE
YEAR OVER YEAR COMPARISONS**

Station	Mar-15	Mar-14	Absolute Delta	Percent Delta
Financial District	1,500	571	930	163%
Tenth Street	1,535	966	569	59%
Fifth Street	852	594	257	43%
Brickell	3,358	3,143	215	7%
College North	1,501	1,346	155	12%
Government Center	9,505	9,979	-474	-5%
Omni	2,728	3,184	-456	-14%
Bayfront Park	3,309	3,492	-183	-5%
College/Bayside	2,636	2,794	-158	-6%
Wilkie D. Ferguson	971	1,082	-111	-10%

Special Transportation Services



March 2015

**TOTAL MONTHLY AND AVERAGE WEEKDAY RIDERSHIP YEAR OVER YEAR
COMPARISON CHARTS – SPECIAL TRANSPORTATION SERVICES (S.T.S.)**

