



RIDERSHIP TECHNICAL REPORT

Division of Performance and Materials Management



May 2015

Table of Contents

Table of Contents	2-3
All Modes Overview	4
Total Weekday, Saturday and Sunday Monthly Boardings By Mode	5
Average Weekday, Saturday and Sunday Boardings by Mode	6
All-Modes Combined Total Monthly Ridership Comparisons By Fiscal Year	7
All Modes Combined Total Monthly and Average Weekday Ridership – Year over Year	
Comparison Charts	8
Metrobus, Metrorail, Metromover and Special Transportation Services (STS) Total Monthly	
Ridership Comparisons by Fiscal Year	9
Modal Splits	10
Metrobus	11
Monthly and Average Daily Bus Boardings by Route	12-14
Metrobus Holiday Boardings By Route	15
Cumulative Percentage Average Weekday Ridership Share – Top 1/4, 1/3, 1/2 and 2/3 of Routes	16
Average Weekday Bus Ridership – Year over Year Comparison Charts	17
Bus “Top 10 / Bottom 10” Routes Average Weekday Ridership Performance	18
Metrobus Parking Patronage Summary	19

Table of Contents (continued)

Metrorail	20
Monthly and Average Daily Rail Boardings by Station	21
Metrorail Holiday Boardings By Station	22
Cumulative Percentage Average Weekday Ridership Share – Top 1/4, 1/3, 1/2 and 2/3 of Stations	23
Total Monthly and Average Weekday Rail Ridership – Year over Year Comparison Charts	24
“Top 5 / Bottom 5” Stations Average Weekday Ridership Performance	25
Metrorail Parking Patronage Summary	26
Metromover	27
Monthly and Average Daily Mover Boardings by Station	28
Metromover Holiday Boardings By Station	29
Cumulative Percentage Average Weekday Ridership Share – Top 1/4, 1/3, 1/2 and 2/3 of Stations	30
Average Weekday Mover Ridership – Year over Year Comparison Charts	31
“Top 5 / Bottom 5” Stations Average Weekday Ridership Performance	32
Special Transportation Services (STS)	33
Total Monthly and Average Weekday STS Ridership – Year over Year Comparison Charts	34

All Modes Overview



**TOTAL WEEKDAY, SATURDAY AND SUNDAY BOARDINGS BY MODE
MAY 2015**

TRAVEL MODE	TOTAL WEEKDAY RIDERSHIP	TOTAL SATURDAY RIDERSHIP	TOTAL SUNDAY (1) RIDERSHIP	TOTAL RIDERSHIP	% CHANGE MAY 2014 TOTAL RIDERSHIP
METROBUS	4,554,275	703,351	616,757	5,874,383	-8.20%
METRORAIL	1,488,598	159,504	142,796	1,790,898	-1.33%
METROMOVER	594,234	83,119	78,613	755,966	-4.21%
STS (2)	114,155	11,521	11,468	137,144	-5.04%
TOTAL	6,751,262	957,495	849,634	8,558,391	-6.44%

(1) Total Sunday ridership includes Monday, May 25, 2015 (Memorial Day Holiday). Ridership for that day was as follows:

Metrobus = 112,797
 Metrorail = 28,412
 Metromover = 14,638
 STS = 1,651

(2) May 2015 STS data may not be complete - preliminary submittal.

**AVERAGE WEEKDAY, SATURDAY AND SUNDAY BOARDINGS BY MODE
MAY 2015**

Travel Mode	Average Weekday	Average Saturday	Average Sunday	% Change May 2014 Weekday	% Change May 2014 Saturday (1)	% Change May 2014 Sunday (1)
METROBUS	227,800	140,700	102,800	-6.0%	-5.8%	-9.2%
METRORAIL	74,400	31,900	22,900	2.1%	0.3%	-3.8%
METROMOVER	29,700	16,600	12,800	-2.0%	0.0%	-7.2%
STS (2)	5,700	2,300	1,900	-1.7%	-4.2%	-5.0%
Totals (3)	337,600	191,500	140,400	-3.9%	-4.3%	-8.1%

(1) Total Sunday ridership includes Monday, May 25, 2015 (Memorial Day Holiday). Ridership for that day was as follows:

Metrobus = 112,797
 Metrorail = 28,412
 Metromover = 14,638
 STS = 1,651

(2) May 2015 STS data may not be complete - preliminary submittal

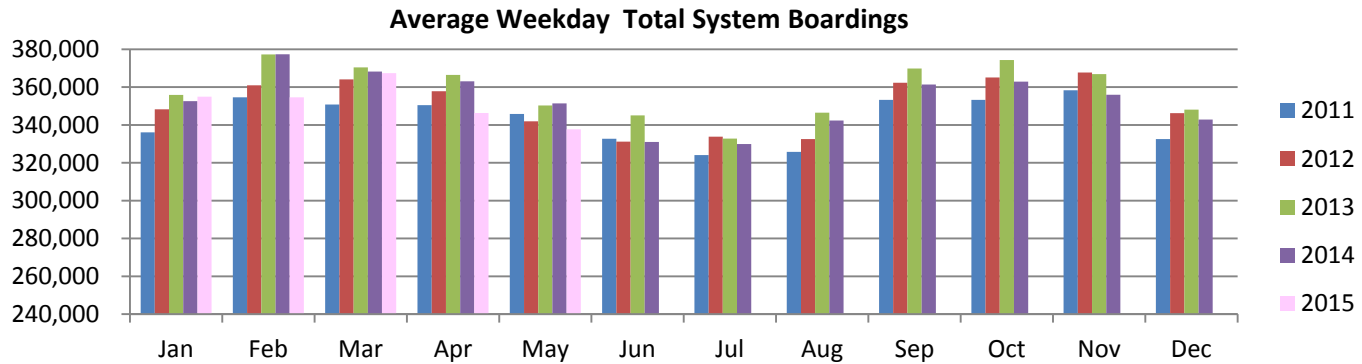
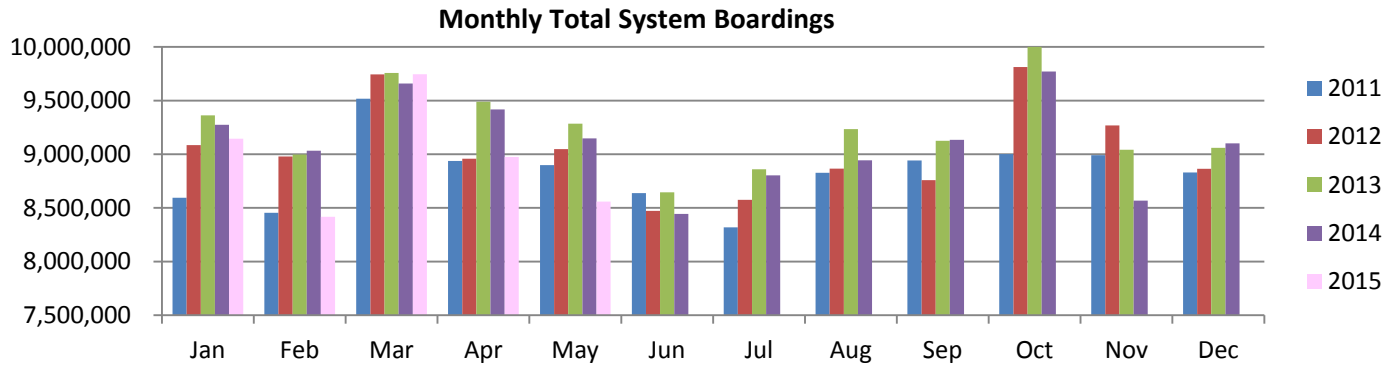
(3) Totals and component averages rounded to the nearest 100 boardings

ALL-MODES COMBINED TOTAL MONTHLY RIDERSHIP COMPARISONS BY FISCAL YEAR

	FISCAL YEARS					VARIANCES				
	FY 11	FY 12	FY 13	FY 14	FY 15	11 TO 12	12 TO 13	13 TO 14	14 TO 15	11 TO 15
OCT	8,838,476	9,002,012	9,813,214	10,068,544	9,771,384	1.9%	9.0%	2.6%	-3.0%	10.6%
NOV	8,489,529	8,990,810	9,269,022	9,041,288	8,566,872	5.9%	3.1%	-2.5%	-5.2%	0.9%
DEC	8,164,813	8,829,398	8,863,734	9,060,265	9,101,659	8.1%	0.4%	2.2%	0.5%	11.5%
JAN	8,593,756	9,085,398	9,362,506	9,274,756	9,144,662	5.7%	3.1%	-0.9%	-1.4%	6.4%
FEB	8,454,599	8,978,926	8,996,370	9,033,111	8,359,779	6.2%	0.2%	0.4%	-7.5%	-1.1%
MAR	9,517,767	9,744,223	9,758,224	9,658,965	9,746,143	2.4%	0.1%	-1.0%	0.9%	2.4%
APR	8,936,651	8,957,761	9,488,659	9,417,913	8,974,654	0.2%	5.9%	-0.7%	-4.7%	0.4%
MAY (1)	8,898,580	9,048,405	9,284,569	9,147,389	8,558,391	1.7%	2.6%	-1.5%	-6.4%	-3.8%
JUN	8,637,675	8,472,882	8,645,403	8,443,226		-1.9%	2.0%	-2.3%		
JUL	8,318,717	8,575,539	8,860,373	8,802,869		3.1%	3.3%	-0.6%		
AUG	8,826,531	8,865,406	9,234,850	8,942,655		0.4%	4.2%	-3.2%		
SEP	8,941,820	8,758,408	9,125,077	8,923,721		-2.1%	4.2%	-2.2%		
TOTAL	104,618,91	107,309,168	110,702,001	109,814,701		2.6%	3.2%	-0.8%		

(1) May 2015 STS data may not be complete - preliminary submittal.

TOTAL MONTHLY AND AVERAGE WEEKDAY RIDERSHIP YEAR OVER YEAR COMPARISON CHARTS – ALL MODES COMBINED



METROBUS, METRORAIL, METROMOVER AND STS TOTAL MONTHLY RIDERSHIP COMPARISONS BY FISCAL YEAR

Bus	Variance		Variance		Variance		Variance		Variance	
	FY 11	FY 12	11 to 12	FY 13	12 to 13	FY 14	13 to 14	FY 15	14 to 15	11 to 15
	OCT	6,390,609	6,518,325	2.0%	6,992,680	7.3%	7,110,756	1.7%	6,733,528	-5.3%
NOV	6,134,424	6,576,998	7.2%	6,620,453	0.7%	6,387,111	-3.5%	5,962,528	-6.6%	-2.8%
DEC	5,923,317	6,487,763	9.5%	6,383,161	-1.6%	6,388,049	0.1%	6,299,190	-1.4%	6.3%
JAN	6,207,368	6,632,074	6.8%	6,622,769	-0.1%	6,480,687	-2.1%	6,303,923	-2.7%	1.6%
FEB	6,131,571	6,510,327	6.2%	6,409,954	-1.5%	6,285,016	-1.9%	5,745,141	-8.6%	-6.3%
MAR	6,853,630	7,008,247	2.3%	6,808,012	-2.9%	6,634,261	-2.6%	6,625,764	-0.1%	-3.3%
APR	6,445,422	6,470,131	0.4%	6,687,380	3.4%	6,564,892	-1.8%	6,097,604	-7.1%	-5.4%
MAY	6,467,364	6,569,214	1.6%	6,562,097	-0.1%	6,398,839	-2.5%	5,874,383	-8.2%	-9.2%
JUN	6,231,084	6,141,707	-1.4%	6,008,363	-2.2%	5,849,882	-2.6%			
JUL	6,024,821	6,206,639	3.0%	6,232,669	0.4%	6,113,620	-1.9%			
AUG	6,381,830	6,397,822	0.3%	6,579,651	2.8%	6,259,080	-4.9%			
SEP	6,532,365	6,309,027	-3.4%	6,476,776	2.7%	6,160,440	-4.9%			
TOTAL	75,723,805	77,828,274	2.8%	78,383,965	0.7%	76,632,633	-2.2%	49,642,061		

Rail	Variance		Variance		Variance		Variance		Variance	
	FY 11	FY 12	11 to 12	FY 13	12 to 13	FY 14	13 to 14	FY 15	14 to 15	11 to 15
	OCT	1,536,557	1,562,078	1.7%	1,828,768	17.1%	1,918,472	4.9%	1,976,097	3.0%
NOV	1,483,376	1,540,968	3.9%	1,704,093	10.6%	1,723,168	1.1%	1,706,362	-1.0%	15.0%
DEC	1,409,454	1,487,052	5.5%	1,593,959	7.2%	1,722,115	8.0%	1,810,803	5.1%	28.5%
JAN	1,499,324	1,571,314	4.8%	1,760,755	12.1%	1,820,300	3.4%	1,857,513	2.0%	23.9%
FEB	1,474,145	1,566,839	6.3%	1,683,387	7.4%	1,784,117	6.0%	1,765,236	-1.1%	19.7%
MAR	1,673,175	1,704,827	1.9%	1,903,432	11.6%	1,932,811	1.5%	1,996,221	3.3%	19.3%
APR	1,575,829	1,594,087	1.2%	1,867,082	17.1%	1,900,743	1.8%	1,897,764	-0.2%	20.4%
MAY	1,538,200	1,562,507	1.6%	1,810,150	15.8%	1,814,954	0.3%	1,790,898	-1.3%	16.4%
JUN	1,504,918	1,446,176	-3.9%	1,699,845	17.5%	1,686,597	-0.8%			
JUL	1,400,466	1,475,744	5.4%	1,698,181	15.1%	1,725,647	1.6%			
AUG	1,523,878	1,604,091	5.3%	1,757,105	9.5%	1,741,692	-0.9%			
SEP	1,515,462	1,590,419	4.9%	1,731,647	8.9%	1,822,047	5.2%			
TOTAL	18,134,784	18,706,102	3.2%	21,038,404	12.5%	21,592,663	2.6%	14,800,894		

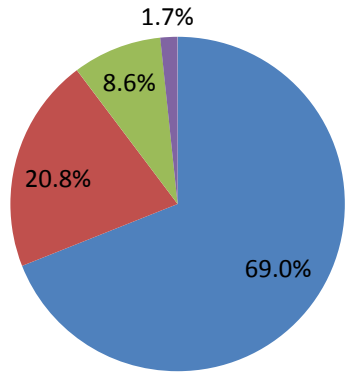
Mover	Variance		Variance		Variance		Variance		Variance	
	FY 11	FY 12	11 to 12	FY 13	12 to 13	FY 14	13 to 14	FY 15	14 to 15	11 to 15
	OCT	773,893	781,879	1.0%	837,145	7.1%	885,612	5.8%	908,681	2.6%
NOV	742,228	736,247	-0.8%	803,831	9.2%	796,012	-1.0%	768,595	-3.4%	3.6%
DEC	712,394	724,504	1.7%	755,040	4.2%	819,462	8.5%	859,907	4.9%	20.7%
JAN	759,232	744,511	-1.9%	835,870	12.3%	836,770	0.1%	847,910	1.3%	11.7%
FEB	723,244	762,468	5.4%	766,316	0.5%	831,367	8.5%	776,527	-6.6%	7.4%
MAR	848,970	884,318	4.2%	902,678	2.1%	950,840	5.3%	980,141	3.1%	15.5%
APR	779,519	753,146	-3.4%	786,015	4.4%	806,409	2.6%	835,099	3.6%	7.1%
MAY	756,004	768,700	1.7%	764,493	-0.5%	789,168	3.2%	755,966	-4.2%	0.0%
JUN	766,173	747,354	-2.5%	800,003	7.0%	770,303	-3.7%			
JUL	766,799	754,501	-1.6%	787,453	4.4%	823,317	4.6%			
AUG	783,616	724,021	-7.6%	757,563	4.6%	805,298	6.3%			
SEP	755,038	720,782	-4.5%	775,004	7.5%	798,525	3.0%			
TOTAL	9,167,109	9,102,431	-0.7%	9,571,411	5.2%	9,913,083	3.6%	6,732,827		

STS	Variance		Variance		Variance		Variance		Variance	
	FY 11	FY 12	11 to 12	FY 13	12 to 13	FY 14	13 to 14	FY 15	14 to 15	11 to 15
	OCT	137,417	139,730	1.7%	154,621	10.7%	153,704	-0.6%	153,078	-0.4%
NOV	129,501	136,597	5.5%	140,645	3.0%	134,997	-4.0%	129,387	-4.2%	-0.1%
DEC	119,648	130,079	8.7%	131,574	1.1%	130,639	-0.7%	131,759	0.9%	10.1%
JAN	127,832	137,499	7.6%	143,112	4.1%	136,999	-4.3%	135,316	-1.2%	5.9%
FEB	125,639	139,292	10.9%	136,713	-1.9%	132,611	-3.0%	129,622	-2.3%	3.2%
MAR	141,992	146,831	3.4%	144,102	-1.9%	141,053	-2.1%	144,017	2.1%	1.4%
APR	135,881	140,397	3.3%	148,182	5.5%	145,869	-1.6%	144,187	-1.2%	6.1%
MAY (1)	137,012	147,984	8.0%	147,829	-0.1%	144,428	-2.3%	137,144	-5.0%	0.1%
JUN	135,500	137,645	1.6%	137,192	-0.3%	136,444	-0.5%			
JUL	126,631	138,655	9.5%	142,070	2.5%	140,285	-1.3%			
AUG	137,207	139,472	1.7%	140,531	0.8%	136,585	-2.8%			
SEP	138,955	138,180	-0.6%	141,650	2.5%	142,709	0.7%			
TOTAL	1,593,215	1,672,361	5.0%	1,708,221	2.1%	1,676,323	-1.9%	1,104,510		

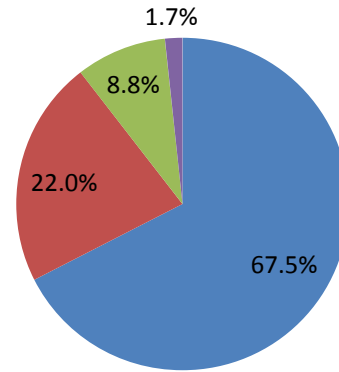
(1) May 2015 STS data may not be complete; preliminary submittal.

MODAL SPLITS

May 2014



May 2015



- Bus
- Rail
- Mover
- STS

Metrobus



May 2015

METROBUS MONTHLY AND AVERAGE DAILY BOARDINGS BY ROUTE

Route	Average Weekday May-15	Average Weekday May-14	Percent Change 15 vs 14	Average Saturday May-15	Average Saturday May-14	Percent Change 15 vs 14	Average Sunday May-15	Average Sunday May-14	Percent Change 15 vs 14	Total Monthly May-15	Total Monthly May-14	Percent Change 15 vs 14
1	658	630	4.4%	455	434	4.8%	333	349	-4.7%	17,427	17,156	1.6%
2	2,756	2,914	-5.4%	1,824	1,569	16.2%	1,134	1217	-6.9%	71,032	75,121	-5.4%
3	7,624	7,868	-3.1%	7,676	8,289	-7.4%	5,508	6582	-16.3%	223,913	239,579	-6.5%
6	656	836	-21.6%	577	577	0.0%	445	520	-14.4%	18,670	23,042	-19.0%
7	4,401	4,510	-2.4%	3,248	3,078	5.5%	2,054	2476	-17.0%	116,596	122,474	-4.8%
8	7,088	7,739	-8.4%	4,356	5,136	-15.2%	2,752	3021	-8.9%	180,043	203,302	-11.4%
9	6,080	6,332	-4.0%	3,798	3,823	-0.6%	2,849	2906	-1.9%	157,685	166,623	-5.4%
10	2,808	2,706	3.8%	2,217	2,214	0.1%	1,516	1613	-6.0%	76,350	75,969	0.5%
11	11,964	12,456	-4.0%	9,567	9,583	-0.2%	6,579	7372	-10.8%	326,586	346,354	-5.7%
12	3,185	3,261	-2.3%							63,693	68,482	-7.0%
16	2,855	3,075	-7.1%	2,177	2,304	-5.5%	1,247	1,426	-12.6%	75,470	83,230	-9.3%
17	4,902	5,088	-3.7%	3,317	3,126	6.1%	2,122	2,322	-8.6%	127,359	134,090	-5.0%
19	1,986	2,056	-3.4%							39,710	43,171	-8.0%
21	2,253	2,360	-4.6%							45,051	49,562	-9.1%
22	4,894	5,105	-4.1%	2,790	2,909	-4.1%	2,063	2,371	-13.0%	124,201	133,605	-7.0%
24	2,446	2,601	-6.0%	1,687	1,890	-10.7%	1,376	1,536	-10.4%	65,608	71,760	-8.6%
27	8,651	9,318	-7.2%	6,339	6,426	-1.4%	4,064	4,273	-4.9%	229,104	249,166	-8.1%
29	738	881	-16.2%							14,765	18,507	-20.2%
31 - BUSWAY LOCAL	2,110	2,125	-0.7%	1,216	1,107	9.9%	968	910	6.4%	54,082	54,715	-1.2%
32	2,990	3,131	-4.5%	1,479	1,445	2.4%	994	985	0.9%	73,158	77,902	-6.1%
33	2,097	2,117	-1.0%	1,287	1,350	-4.7%	734	873	-16.0%	52,773	55,565	-5.0%
34 - BUSWAY FLYER	1,910	1,526	25.1%							38,195	32,051	19.2%
35	2,426	2,830	-14.3%	1,089	1,428	-23.7%	554	989	-44.0%	57,293	71,517	-19.9%
36	2,857	3,099	-7.8%	1,557	1,633	-4.7%	1,263	1,144	10.4%	72,496	78,961	-8.2%
37	4,046	4,464	-9.4%	3,064	3,341	-8.3%	2,361	2,654	-11.0%	110,408	123,715	-10.8%
38 - BUSWAY MAX	7,491	7,985	-6.2%	6,087	5,939	2.5%	4,786	4,918	-2.7%	208,962	221,965	-5.9%
40	2,348	2,343	0.2%	931	1,185	-21.5%	698	840	-16.9%	55,796	59,330	-6.0%
42	1,609	1,802	-10.7%	944	1,027	-8.0%	626	729	-14.2%	40,662	46,625	-12.8%
46 - LIBERTY CITY CONN.	56	124	-54.8%							1,122	2,598	-56.8%
48	285	281	1.4%							5,700	5,909	-3.5%
51 - FLAGLER MAX	3,608	3,526	2.3%							72,168	74,049	-2.5%
52	1,705	1,911	-10.8%	948	1,007	-5.8%	684	695	-1.6%	42,955	48,633	-11.7%
54	3,786	4,004	-5.4%	2,311	2,776	-16.8%	1,521	1,816	-16.3%	96,397	107,047	-9.9%
56	747	790	-5.5%							14,931	16,598	-10.0%
57	595	547	8.7%							11,891	11,480	3.6%

METROBUS MONTHLY AND AVERAGE DAILY BOARDINGS BY ROUTE

Route	Average Weekday	Average Weekday	Percent Change	Average Saturday	Average Saturday	Percent Change	Average Sunday	Average Sunday	Percent Change	Total Monthly	Total Monthly	Percent Change
	May-15	May-14	15 vs 14	May-15	May-14	15 vs 14	May-15	May-14	15 vs 14	May-15	May-14	15 vs 14
62	3,240	3,277	-1.1%	1,903	2,219	-14.3%	1,131	1,489	-24.1%	81,103	87,355	-7.2%
70	1,409	1,522	-7.4%	1,148	962	19.4%	937	721	29.9%	39,548	40,381	-2.1%
71	951	1,181	-19.5%	454	443	2.5%	258	259	-0.3%	22,835	28,308	-19.3%
72	1,017	1,177	-13.6%	560	695	-19.4%	370	521	-29.0%	25,364	30,794	-17.6%
73	2,721	2,750	-1.1%	1,129	1,135	-0.5%	672	635	5.7%	64,097	66,593	-3.7%
75	1,916	2,058	-6.9%	670	782	-14.3%	463	437	5.9%	44,445	49,314	-9.9%
77	9,997	9,767	2.4%	5,661	6,184	-8.5%	3,581	3,843	-6.8%	249,736	255,245	-2.2%
79	644	606	6.2%							12,874	12,729	1.1%
87	2,150	2,194	-2.0%	673	796	-15.4%	434	434	0.0%	48,973	52,221	-6.2%
88	2,707	2,844	-4.8%	2,118	2176	-2.7%	1,542	1,692	-8.9%	73,977	79,068	-6.4%
93 - BISCAYNE MAX	3,835	4,197	-8.6%							76,705	88,146	-13.0%
95 EXPRESS	2,156	2,344	-8.0%							43,115	49,227	-12.4%
99	2,011	2,179	-7.7%	1,289	1,317	-2.1%	766	828	-7.5%	51,261	56,493	-9.3%
101 - A	172	146	17.9%	82	59	38.6%	56	24	131.3%	4,185	3,487	20.0%
102 - B	1,850	1,982	-6.7%	1,205	1,211	-0.5%	946	1,038	-8.8%	48,695	52,871	-7.9%
103 - C	3,461	3,912	-11.5%	3,210	3,298	-2.7%	2,179	2,607	-16.4%	98,334	111,681	-12.0%
104	1,171	1,293	-9.4%	606	656	-7.6%	409	391	4.6%	28,904	32,393	-10.8%
105 - E	1,566	1,630	-3.9%	967	964	0.3%	883	863	2.3%	41,455	43,372	-4.4%
107 - G	2,015	2,036	-1.1%	1,513	1,532	-1.2%	1,128	1,222	-7.7%	54,627	56,534	-3.4%
108 - H	1,922	2,020	-4.9%	1,512	1,626	-7.0%	1,297	1,342	-3.3%	53,782	57,268	-6.1%
110 - J	3,150	3,428	-8.1%	2,223	2,514	-11.6%	1,856	1,975	-6.0%	85,246	94,442	-9.7%
112 - L	10,149	10,933	-7.2%	7,939	8,807	-9.9%	5,804	6,594	-12.0%	277,498	306,596	-9.5%
113 - M	960	943	1.8%	601	583	3.0%	454	582	-22.0%	24,932	25,629	-2.7%
115	405	497	-18.4%							8,107	10,441	-22.4%
117	421	528	-20.2%							8,424	11,085	-24.0%
119 - S	12,043	13,793	-12.7%	9,658	11,127	-13.2%	9,289	10,770	-13.8%	344,884	399,140	-13.6%
120 - SOUTH BEACH MAX	7,920	8,535	-7.2%	6,110	6,645	-8.1%	3,962	4,254	-6.9%	212,732	233,737	-9.0%
123 - SOUTH BEACH LOCAL	3,049	3,546	-14.0%	2,419	3,067	-21.1%	2,082	2,484	-16.2%	85,562	102,220	-16.3%
132 TRI-RAIL (DORAL)	61	37	64.5%							1,217	771	57.8%
135	1,676	1,683	-0.4%	588	571	2.9%	505	439	15.1%	39,480	40,387	-2.2%
136	345	350	-1.5%							6,892	7,347	-6.2%
137 - WEST DADE CONN.	2,169	2,296	-5.5%	1,515	1,655	-8.5%	1,065	1,252	-14.9%	57,342	62,760	-8.6%
150 - MIAMI BEACH AIRPORT FLYER	1,702	1,286	32.4%	1,675	1,358	23.3%	1,663	1,289	29.0%	52,396	40,249	30.2%

METROBUS MONTHLY AND AVERAGE DAILY BOARDINGS BY ROUTE

Route	Average Weekday	Average Weekday	Percent Change	Average Saturday	Average Saturday	Percent Change	Average Sunday	Average Sunday	Percent Change	Total Monthly	Total Monthly	Percent Change
	May-15	May-14	15 vs 14	May-15	May-14	15 vs 14	May-15	May-14	15 vs 14	May-15	May-14	15 vs 14
183	4,152	4,366	-4.9%	2,462	2,647	-7.0%	1,986	2,028	-2.1%	107,261	115,066	-6.8%
195 DADE-BROWARD EXPRESS	1,201	1,255	-4.3%							24,010	26,355	-8.9%
200 - CUTLER BAY LOCAL	102	77	32.2%	67						2,271	1,385	64.0%
202 - LITTLE HAITI CONN.	158	217	-27.2%	93	129	-27.8%	142	112	26.8%	4,479	5,768	-22.3%
204 KILLIAN KAT	1,296	1,366	-5.1%							25,926	28,694	-9.6%
207 (7st) - LITTLE HAVANA CIRC.	1,795	1,820	-1.4%							35,908	38,223	-6.1%
208 (8st) - LITTLE HAVANA CIRC.	1,947	2,645	-26.4%							38,947	55,537	-29.9%
211 - OVERTOWN CIRC	100	154	-34.9%							2,006	3,230	-37.9%
212 - SWEETWATER CIRC.	120	131	-8.2%							2,406	2,755	-12.7%
238 EAST/WEST CONN.	525	595	-11.8%							10,498	12,503	-16.0%
246 - NIGHT OWL	69	93	-25.9%	117	128	-8.8%	86	95	-9.6%	2,478	3,064	-19.1%
249 - COCONUT GROVE CIRC.	1,255	1,432	-12.4%	776	928	-16.4%	559	724	-22.8%	32,329	38,327	-15.6%
252 - CORAL REEF MAX	1,107	1,172	-5.5%	402	473	-14.9%	324	365	-11.3%	26,104	28,809	-9.4%
254 - BROWNSVILLE CIRC.	33	35	-6.7%							653	738	-11.5%
267 - LUDLAM LIMITED	143	166	-13.7%							2,865	3,496	-18.0%
272 SUNSET KAT	687	705	-2.5%							13,744	14,802	-7.1%
277 - 7th AVENUE MAX	945	994	-4.9%							18,907	20,872	-9.4%
286 - NORTH POINTE CIRC.	152	141	7.7%	111	112	-0.9%				3,593	3,530	1.8%
287 - SAGA BAY MAX	435	472	-7.8%							8,701	9,919	-12.3%
288 - KENDALL CRUISER	879	931	-5.6%							17,582	19,550	-10.1%
297 - 27th AVENUE ENHANCED BUS	1,709	1,857	-8.0%							34,183	38,988	-12.3%
301 DADE-MONROE EXPRESS	1,027	1,044	-1.6%	947	921	2.9%	831	896	-7.3%	30,265	31,000	-2.4%
302 CARD SOUND EXPRESS	85	96	-11.3%	63	86	-27.0%	82	75	8.9%	2,507	2,818	-11.0%
338				185	212	-12.6%	171	189	-9.4%	1,953	2,005	-2.6%
344	113	164	-30.9%							2,265	3,443	-34.2%
500	71	74	-3.9%	112	69	62.3%	70	67	4.7%	2,403	2,243	7.1%
115/117 WEEKEND INTERL.				404	494	-18.2%	408	539	-24.4%	4,467	5,167	-13.5%
12/21 WEEKEND INTERL.				3,107	3,238	-4.0%	2,363	2,418	-2.3%	29,715	28,280	5.1%
207/208 WEEKEND INTERL.				3,343	3,309	1.0%	2,759	2,890	-4.5%	33,267	30,996	7.3%
55 MARLINS SHUTTLES	70	104	-32.6%	153	123	24.1%	110	194	-57.6%	1,278	1,797	-28.9%
GREEN HILLS SHUTTLE	4	4	0.0%							16	16	0.0%
KINGS CREEK SHUTTLE	12	11	11.4%							49	44	11.4%
SIERRA LAKES SHUTTLE	20	16	22.5%							98	63	55.6%
ROBERT SHARPE SHUTTLE	10	15	-34.7%							49	74	-33.8%
AHEPA SHUTTLE	33	29	13.8%							132	116	13.8%
FEDERATION GARDENS SHUTTLE				18	14	27.1%				89	71	25.4%
Total	227,826	241,492	-5.7%	140,731	148,861	-5.5%	102,848	113,106	-9.1%	5,874,383	6,377,881	-7.9%

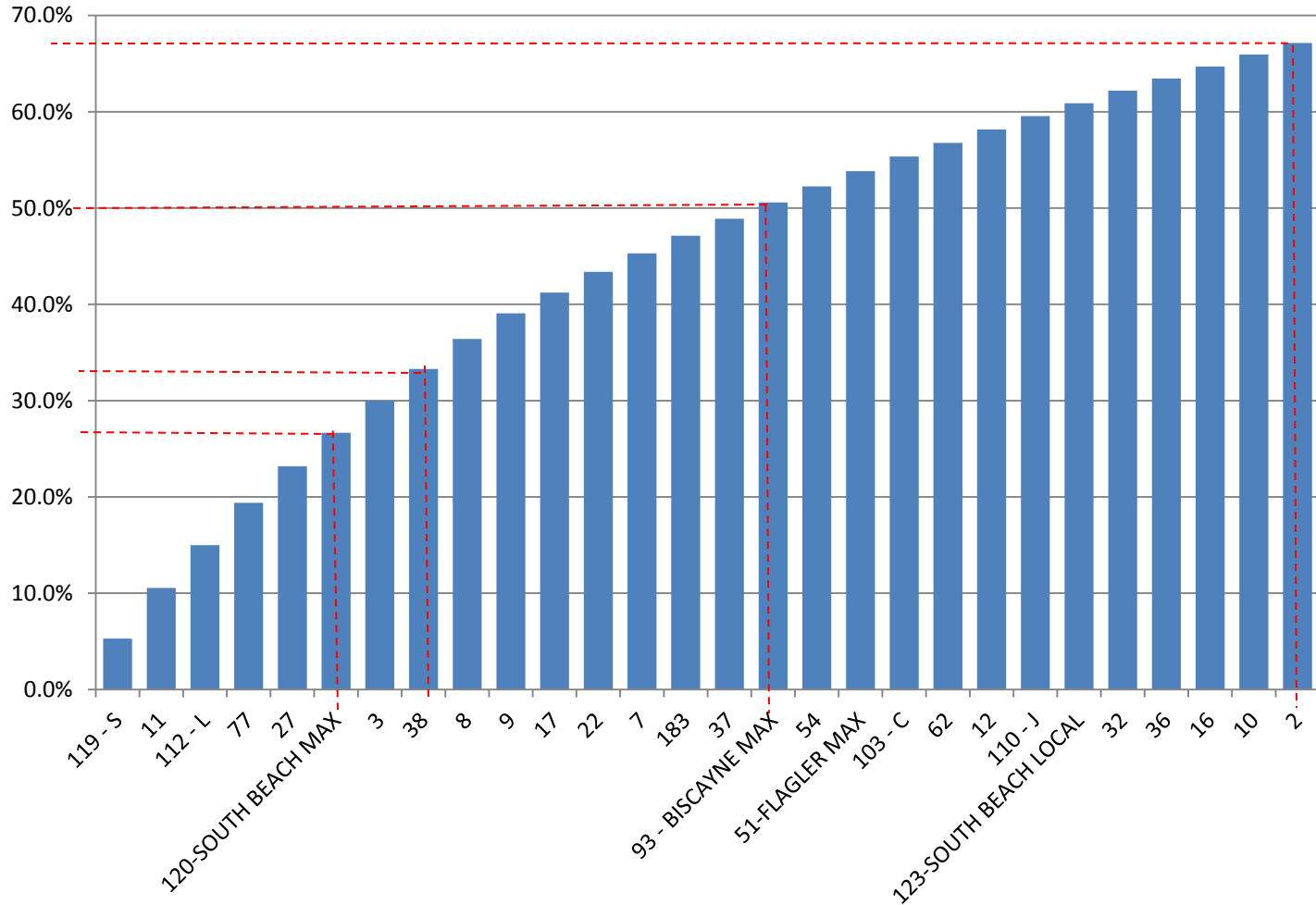
Note: excludes routes which were not run both years

METROBUS HOLIDAY BOARDINGS BY ROUTE MEMORIAL DAY 2015

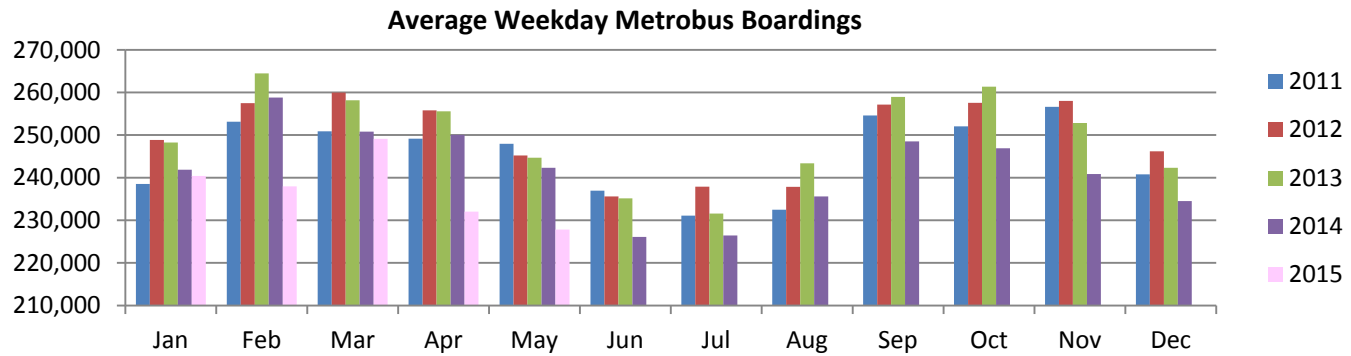
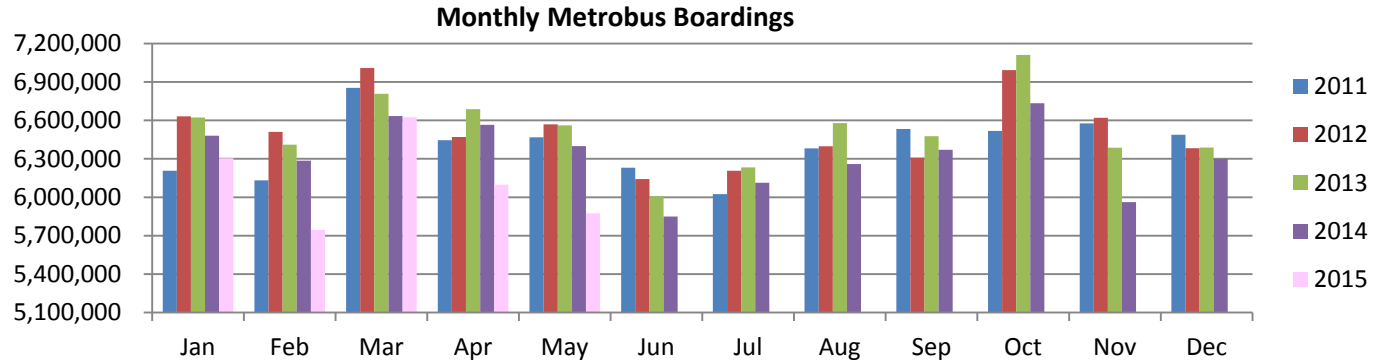
ROUTES	Memorial Day 2014	Memorial Day 2015	Percentage Difference	ROUTES	Memorial Day 2014	Memorial Day 2015	Percentage Difference
1	342	418	22.2%	101	45	98	117.8%
2	1,300	1,603	23.3%	102	1,368	1,093	-20.1%
3	6,966	5,768	-17.2%	103	2,810	2,301	-18.1%
6	499	434	-13.0%	104	391	531	35.8%
7	2,818	2,322	-17.6%	105	1,234	1,197	-3.0%
8	2,910	2,988	2.7%	107	1,711	1,371	-19.9%
9	3,759	3,295	-12.3%	108	1,502	1,414	-5.9%
10	1,641	1,752	6.8%	110	2,202	2,003	-9.0%
11	7,934	7,358	-7.3%	112	7,041	6,043	-14.2%
12/21	2,461	2,336	-5.1%	113	614	416	-32.2%
16	1,722	1,239	-28.0%	115/117	576	420	-27.1%
17	2,408	2,293	-4.8%	119	11,189	9,909	-11.4%
22	2,315	2,521	8.9%	120	4,639	4,275	-7.8%
24	1,358	1,481	9.1%	123	2,328	2,023	-13.1%
27	4,683	4,272	-8.8%	135	254	545	114.6%
31	874	1,077	23.2%	137	1,355	1,245	-8.1%
32	1,127	1,124	-0.3%	150	1,308	1,366	4.4%
33	978	968	-1.0%	183	2,014	2,057	2.1%
35	1,158	537	-53.6%	202	138	84	-39.1%
36	1,246	1,236	-0.8%	207/208	3,194	3,184	-0.3%
37	3,045	2,737	-10.1%	246	81	101	24.7%
38/500	4,959	5,191	4.7%	249	839	692	-17.5%
40	1,084	919	-15.2%	252	380	423	11.3%
42	808	759	-6.1%	301	916	912	-0.4%
52	778	679	-12.7%	302	85	96	12.9%
54	2,032	1,668	-17.9%	338	196	158	-19.4%
62	1,307	1,371	4.9%				
70	729	866	18.8%				
71	253	273	7.9%				
72	620	353	-43.1%				
73	727	787	8.3%				
75	575	533	-7.3%				
77	4,653	4,564	-1.9%				
87	550	476	-13.5%				
88	1,949	1,808	-7.2%				
99	958	834	-12.9%				
Total	121,936	112,797	-7.5%				

Note: excludes shuttles, and routes which were not run both years

**Bus - Cumulative Percentage Average Weekday Ridership Share
Top 1/4, 1/3, 1/2 and 2/3 of Routes**



TOTAL MONTHLY AND AVERAGE WEEKDAY RIDERSHIP YEAR OVER YEAR COMPARISON CHARTS – METROBUS



**“TOP 10 / BOTTOM 10” BUS ROUTES AVERAGE WEEKDAY RIDERSHIP PERFORMANCE
YEAR OVER YEAR COMPARISONS**

Route	May-15	May-14	Absolute Delta	Percent Delta
150-MIAMI BEACH AIRPORT FLYER	1,702	1,286	416	32.3%
34-BUSWAY FLYER	1,910	1,526	384	25.1%
77	9,997	9,767	230	2.4%
10	2,808	2,706	102	3.8%
51-FLAGLER MAX	3,608	3,526	82	2.3%
57	595	547	48	8.8%
79	644	606	38	6.2%
1	658	630	27	4.3%
113 - M	960	943	17	1.8%
286-NORTH POINTE CIRC	152	141	11	7.5%
119 - S	12,043	13,793	-1,750	-12.7%
112 - L	10,149	10,933	-784	-7.2%
208(8st)-LITTLE HAVANA CIRC	1,947	2,645	-697	-26.4%
27	8,651	9,318	-666	-7.2%
8	7,088	7,739	-652	-8.4%
120-SOUTH BEACH MAX	7,920	8,535	-615	-7.2%
123-SOUTH BEACH LOCAL	3,049	3,546	-497	-14.0%
38	7,491	7,985	-494	-6.2%
11	11,964	12,456	-492	-4.0%
103 - C	3,461	3,912	-451	-11.5%

**METROBUS PARKING PATRONAGE SUMMARY
MAY 2015**

PARK-RIDE LOT	ACTUAL AVAILABLE SPACES	ACTUAL OCCUPANCY	PERCENT OCCUPANCY
BUSWAY / SW 152nd ST.	200	192	96%
BUSWAY/SW 168TH STREET	149	149	100%
BUSWAY/SW 244TH STREET	95	90	95%
BUSWAY/SW 296TH STREET	139	139	100%
CORAL REEF DRIVE 117 / TURNPIKE	95	54	57%
GOLDEN GLADES-EAST LOT	535	155	29%
GOLDEN GLADES-WEST	1,007	664	66%
HAMMOCKS TOWN CENTER	50	50	100%
KENDALL DRIVE SW 150th AVENUE	109	10	9%
TARGET (BUSWAY / SW 112 AVE.)	450	204	45%
WEST KENDALL TRANSIT TEAM (KENDALL / SW 162 AVE)	40	30	75%
MIAMI GARDENS DR. / NW 73 AVENUE	136	59	43%
TOTAL	3,005	1,796	59.8%

Metrorail



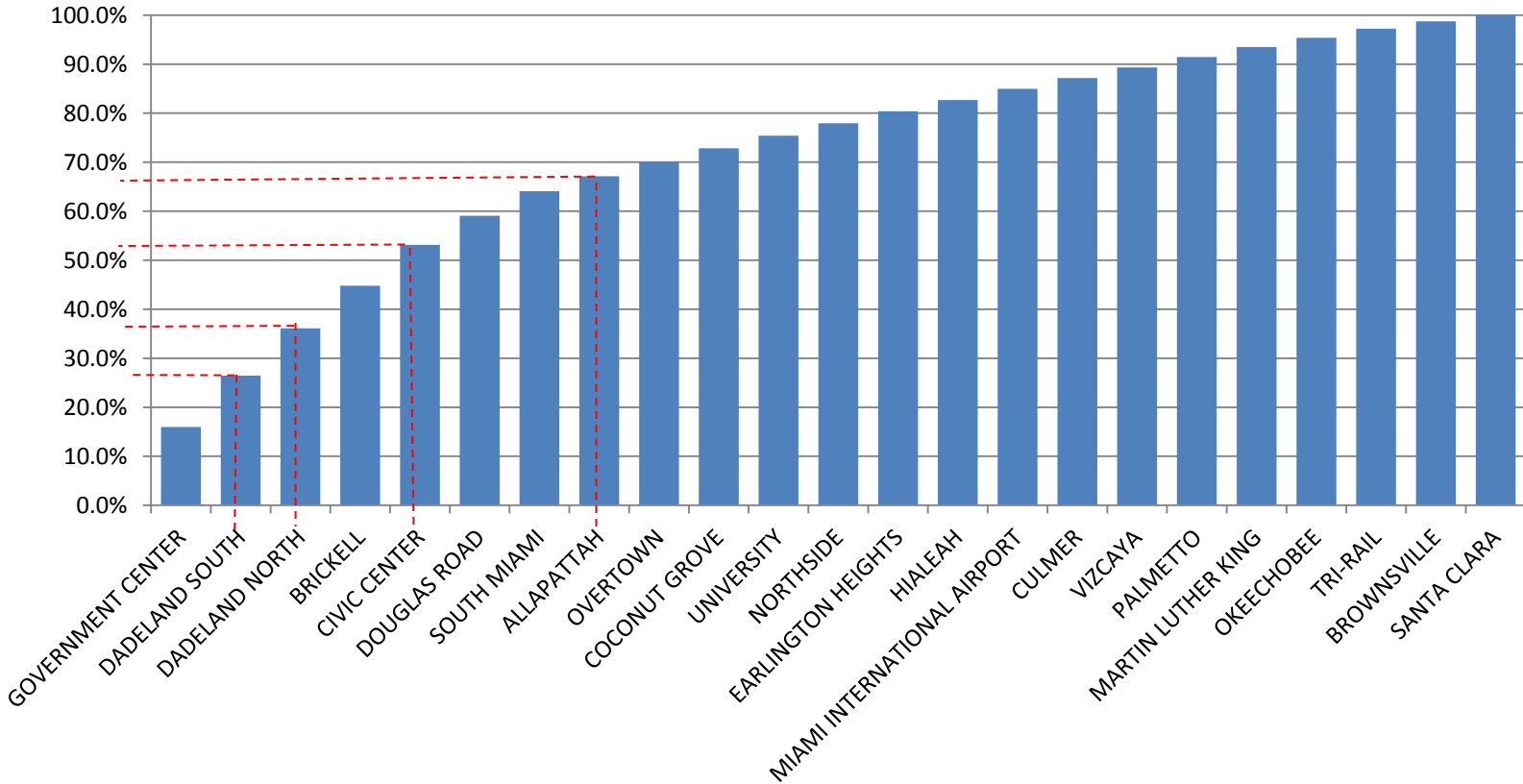
METRORAIL MONTHLY AND AVERAGE DAILY BOARDINGS BY STATION

Station	Average Weekday May-15	Average Weekday May-14	Percent Change 15 vs 14	Average Saturday May-15	Average Saturday May-14	Percent Change 15 vs 14	Average Sunday May-15	Average Sunday May-14	Percent Change 15 vs 14	Total Monthly May-15	Total Monthly May-14	Percent Change 15 vs 14
ALLAPATTAH	2,264	2,141	5.7%	1,329	1,324	0.4%	984	972	1.3%	58,008	56,667	2.4%
BRICKELL	6,465	5,855	10.4%	2,773	2,708	2.4%	1,992	2,089	-4.6%	155,593	147,267	5.7%
BROWNSVILLE	1,115	900	23.8%	716	601	19.1%	510	384	33.0%	29,033	23,894	21.5%
CIVIC CENTER	6,197	6,109	1.4%	1,076	1,034	4.0%	805	772	4.4%	134,392	137,567	-2.3%
COCONUT GROVE	2,075	2,196	-5.5%	1,129	1,298	-13.0%	832	968	-14.1%	52,296	57,595	-9.2%
CULMER	1,633	1,620	0.8%	884	875	1.1%	672	676	-0.7%	41,170	41,815	-1.5%
DADELAND NORTH	7,210	7,118	1.3%	2,529	2,601	-2.8%	1,678	1,896	-11.5%	167,502	172,424	-2.9%
DADELAND SOUTH	7,782	7,777	0.1%	3,256	3,217	1.2%	2,393	2,508	-4.6%	187,040	192,561	-2.9%
DOUGLAS ROAD	4,416	4,462	-1.0%	1,781	1,923	-7.4%	1,282	1,403	-8.6%	105,263	110,617	-4.8%
EARLINGTON HEIGHTS	1,826	1,780	2.6%	1,298	1,126	15.2%	758	854	-11.2%	47,776	47,426	0.7%
GOVERNMENT CENTER	11,893	11,917	-0.2%	4,779	4,922	-2.9%	3,502	3,747	-6.6%	283,622	294,699	-3.8%
HIALEAH	1,714	1,756	-2.4%	934	929	0.6%	588	642	-8.4%	42,601	44,884	-5.1%
DR. MARTIN LUTHER KING, JR.	1,508	1,456	3.6%	880	844	4.3%	583	571	2.0%	38,172	37,750	1.1%
MIAMI INTERNATIONAL AIRPORT	1,690	1,623	4.1%	1,328	1,304	1.8%	1,335	1,320	1.2%	48,659	47,569	2.3%
NORTHSIDE	1,883	1,649	14.2%	1,243	953	30.5%	839	720	16.5%	48,869	42,955	13.8%
OKEECHOBEE	1,409	1,393	1.2%	493	439	12.2%	291	299	-2.6%	32,540	33,070	-1.6%
OVERTOWN / ARENA	2,171	2,010	8.0%	662	631	5.0%	550	525	4.7%	50,071	48,045	4.2%
PALMETTO	1,590	1,490	6.7%	439	403	9.0%	232	236	-1.5%	35,519	34,644	2.5%
SANTA CLARA	938	920	2.0%	555	525	5.8%	321	340	-5.7%	23,564	23,734	-0.7%
SOUTH MIAMI	3,736	3,725	0.3%	1,682	1,860	-9.5%	1,178	1,278	-7.8%	90,435	94,209	-4.0%
TRI-RAIL	1,384	1,461	-5.3%	815	882	-7.6%	609	672	-9.3%	35,528	38,503	-7.7%
UNIVERSITY	1,918	1,951	-1.7%	577	660	-12.6%	391	412	-5.1%	43,794	46,430	-5.7%
VIZCAYA	1,615	1,615	0.0%	742	762	-2.7%	552	554	-0.3%	39,451	40,629	-2.9%
TOTAL	74,430	72,924	2.1%	31,901	31,820	0.3%	22,877	23,835	-4.0%	1,790,898	1,814,954	-1.3%

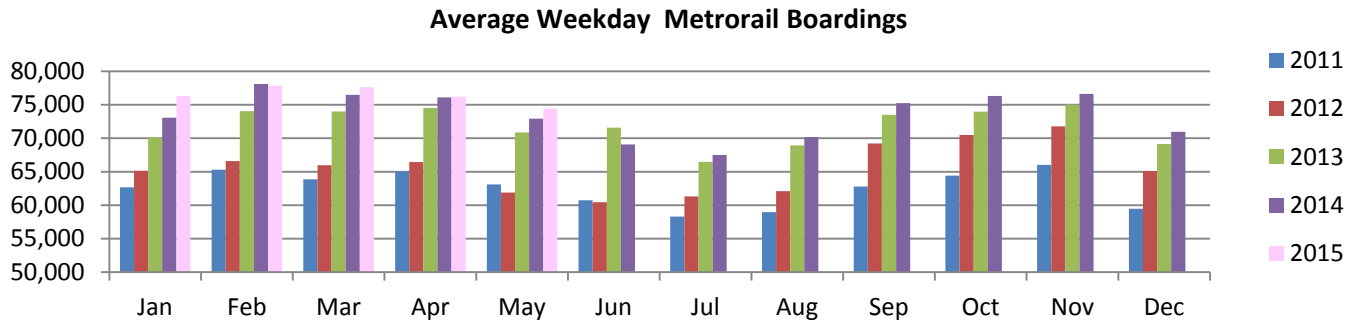
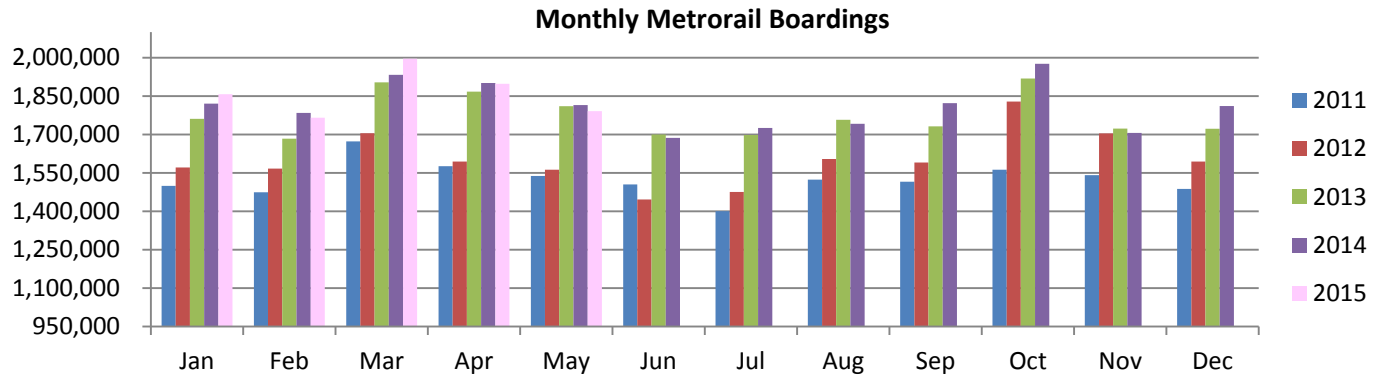
**METRORAIL HOLIDAY BOARDINGS BY STATION
MAY 2015**

STATIONS	Memorial Day	Memorial Day	Percentage
	2014	2015	Difference
Dadeland South	3,130	3,158	0.9%
Dadeland North	2,355	2,267	-3.7%
South Miami	1,576	1,412	-10.4%
University	515	590	14.6%
Douglas	1,688	1,633	-3.3%
Coconut Grove	1,109	1003	-9.6%
Vizcaya	687	688	0.1%
Brickell	2,420	2,467	1.9%
Government Center	4,840	4,367	-9.8%
Overtown/Arena	581	587	1.0%
Culmer	716	736	2.8%
Civic Center	1,027	1056	2.8%
Santa Clara	434	419	-3.5%
Allapattah	1,193	1168	-2.1%
Earlington Heights	1,009	976	-3.3%
Brownsville	456	612	34.2%
Miami Inter Airport	1,686	1,542	-8.5%
Martin Luther King	676	692	2.4%
Northside	675	800	18.5%
Tri-Rail	722	729	1.0%
Hialeah	798	713	-10.7%
Okeechobee	429	443	3.3%
Palmetto	399	354	-11.3%
TOTAL	29,121	28,412	-2.4%

Metrorail - Cumulative Percentage Ridership Share Top 1/4, 1/3, 1/2 and 2/3 of Stations



TOTAL MONTHLY AND AVERAGE WEEKDAY RIDERSHIP YEAR OVER YEAR COMPARISON CHARTS – METRORAIL



**“TOP 5 / BOTTOM 5” METRORAIL STATIONS AVERAGE WEEKDAY RIDERSHIP PERFORMANCE
YEAR OVER YEAR COMPARISONS**

Station	May-15	May-14	Absolute Delta	Percent Delta
BRICKELL	6,465	5,855	610	10.4%
NORTHSIDE	1,883	1,649	234	14.2%
BROWNSVILLE	1,115	900	215	23.8%
OVERTOWN	2,171	2,010	161	8.0%
ALLAPATTAH	2,264	2,141	122	5.7%
COCONUT GROVE	2,075	2,196	-122	-5.5%
TRI-RAIL	1,384	1,461	-77	-5.3%
DOUGLAS ROAD	4,416	4,462	-46	-1.0%
HIALEAH	1,714	1,756	-42	-2.4%
UNIVERSITY	1,918	1,951	-33	-1.7%

**METRORAIL PARKING PATRONAGE SUMMARY
MAY 2015**

STATION	AVAILABLE PARKING SPACES	AVERAGE WEEKDAY	PERCENT OCCUPANCY
DADELAND SOUTH	1,290	1,236	96%
DADELAND NORTH	1,963	1,926	98%
SOUTH MIAMI	1,729	847	49%
UNIVERSITY	230	189	82%
DOUGLAS ROAD	220	216	98%
COCONUT GROVE	204	99	49%
VIZCAYA	120	66	55%
SANTA CLARA	61	50	82%
ALLAPATTAH	74	16	22%
EARLINGTON HEIGHTS	361	102	28%
BROWNSVILLE	100	19	19%
DR. MARTIN LUTHER KING JR. (MDT)	62	49	78%
DR. MARTIN LUTHER KING JR. (GARAGE)	631	215	34%
NORTHSIDE	100	73	73%
HIALEAH	338	82	24%
OKEECHOBEE	1,398	345	25%
PALMETTO	700	368	53%
TOTAL	9,581	5,896	61.5%

Note: No parking at Brickell, Government Center, Civic Center, Culmer and Tri-Rail stations.

Metromover



METROMOVER MONTHLY AND AVERAGE DAILY BOARDINGS BY STATION

Station	Average Weekday	Average Weekday	Percent Change	Average Saturday	Average Saturday	Percent Change	Average Sunday	Average Sunday	Percent Change	Total Monthly	Total Monthly	Percent Change
	May-15	May-14	15 vs 14	May-15	May-14	15 vs 14	May-15	May-14	15 vs 14	May-15	May-14	15 vs 14
School Board	643	685	-6.1%	527	594	-11.3%	544	606	-10.2%	18,694	20,368	-8.2%
Omni	2,435	2,677	-9.0%	1,824	2,169	-15.9%	1,346	1,765	-23.7%	66,345	76,136	-12.9%
Museum Park	244	171	42.8%	248	141	75.9%	155	124	24.8%	7,941	4,963	60.0%
Eleventh Street	248	308	-19.6%	202	241	-16.0%	206	209	-1.4%	7,205	8,707	-17.3%
Park West	328	312	5.4%	265	265	-0.1%	230	182	26.3%	9,312	8,916	4.4%
Freedom Tower	392	366	6.9%	353	297	18.7%	277	228	21.5%	11,209	10,747	4.3%
Government Center	8,150	8,555	-4.7%	2,282	2,531	-9.8%	1,670	2,024	-17.5%	184,782	202,700	-8.8%
Miami Avenue	320	819	-60.9%	241	488	-50.6%	199	348	-42.9%	8,929	21,402	-58.3%
Third Street	311	324	-4.2%	230	220	4.5%	159	182	-12.4%	8,325	8,805	-5.5%
Knight Center	950	886	7.2%	885	460	92.3%	330	346	-4.5%	25,384	22,685	11.9%
Bayfront Park	2,873	2,798	2.7%	1,661	1,660	0.0%	1,493	1,439	3.8%	74,536	74,178	0.5%
First Street	1,583	1,568	1.0%	1,194	1,162	2.7%	981	1,040	-5.6%	43,458	43,853	-0.9%
College/Bayside	1,810	2,132	-15.1%	1,516	1,598	-5.2%	1,236	1,477	-16.3%	51,331	60,273	-14.8%
College North	1,048	1,143	-8.3%	615	396	55.1%	363	428	-15.2%	26,125	28,077	-7.0%
Wilkie D. Ferguson	848	933	-9.1%	555	613	-9.4%	447	433	3.3%	22,465	24,979	-10.1%
Riverwalk	878	790	11.1%	623	498	25.2%	432	402	7.7%	23,244	21,142	9.9%
Fifth Street	751	489	53.5%	333	293	13.6%	237	173	37.4%	18,220	12,563	45.0%
Eighth Street		1,148			488			352			28,349	
Tenth Street	1,383	620	122.9%	780	427	82.7%	581	270	115.0%	35,109	16,550	112.1%
Brickell	3,104	2,885	7.6%	1,738	1,699	2.3%	1,472	1,433	2.7%	79,605	76,380	4.2%
Financial District	1,414	677	108.8%	552	313	76.2%	436	308	41.7%	33,747	17,395	94.0%
TOTAL	29,712	30,286	-1.9%	16,624	16,555	0.4%	12,795	13,768	-7.1%	755,966	789,168	-4.2%

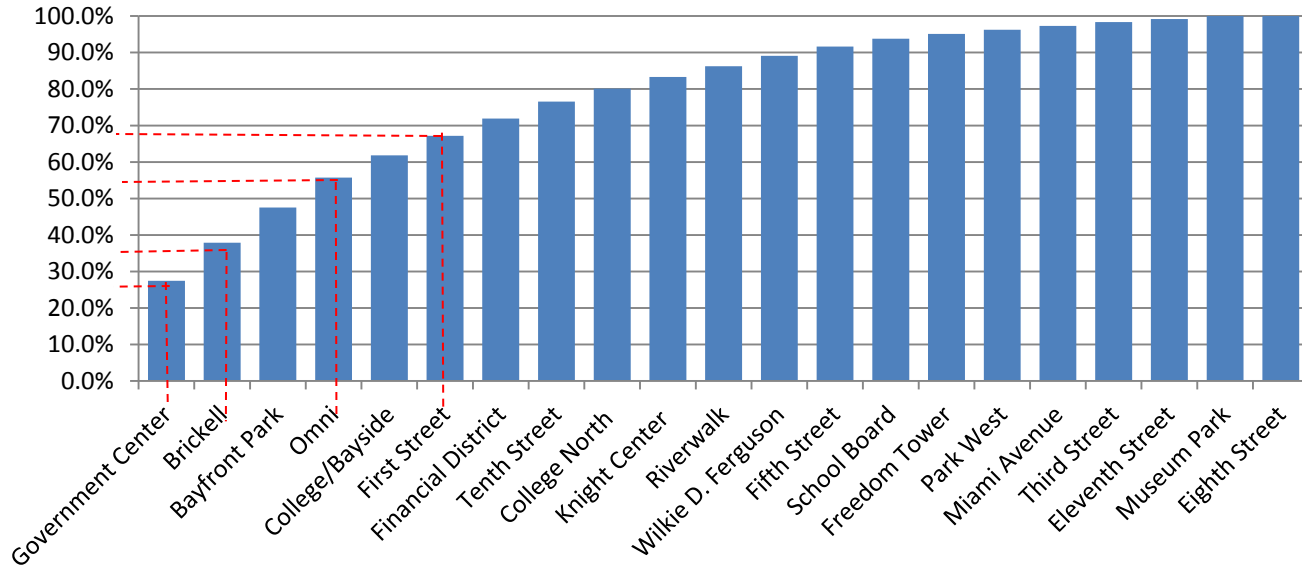
Note: Eighth Street station is closed until Summer 2015 due to construction. Bicentennial Park station was reopened as Museum Park in December 2013. Boardings at Museum Park and Miami Avenue stations contain estimates based on other data within May 2015. There have been closings and early closures due to construction.

METROMOVER HOLIDAY BOARDINGS BY STATION MAY 2015

Stations	Memorial Day	Memorial Day	Percentage
	2014	2015	Difference
School Board	590	482	-18.3%
Omni	2,023	1,799	-11.1%
Museum Park	171	1,044	510.5%
Eleventh Street	203	217	6.9%
Park West	319	271	-15.0%
Freedom Tower	654	224	-65.7%
Government Center	2,302	2,025	-12.0%
Miami Avenue	380	321	-15.5%
Third Street	162	163	0.6%
Knight Center	394	316	-19.8%
Bayfront Park	1,362	1,303	-4.3%
First Street	957	918	-4.1%
College/Bayside	1,594	1,372	-13.9%
College North	379	281	-25.9%
Wilkie D. Ferguson	583	489	-16.1%
Riverwalk	461	410	-11.1%
Fifth Street	133	352	164.7%
Tenth Street	305	640	109.8%
Brickell	1,570	1,488	-5.2%
Financial District	374	523	39.8%
TOTAL	14,916	14,638	-1.9%

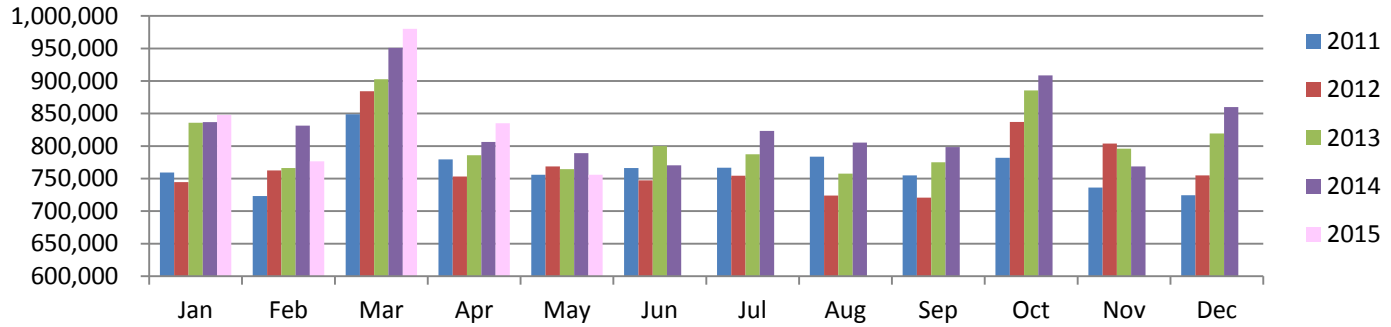
Note: Eighth Street station is closed until Summer 2015 due to construction. There have been closings and early closures at other stations due to construction.

Metromover - Cumulative Average Weekday Ridership Percentage Share Top 1/4, 1/3, 1/2 and 2/3 of Stations

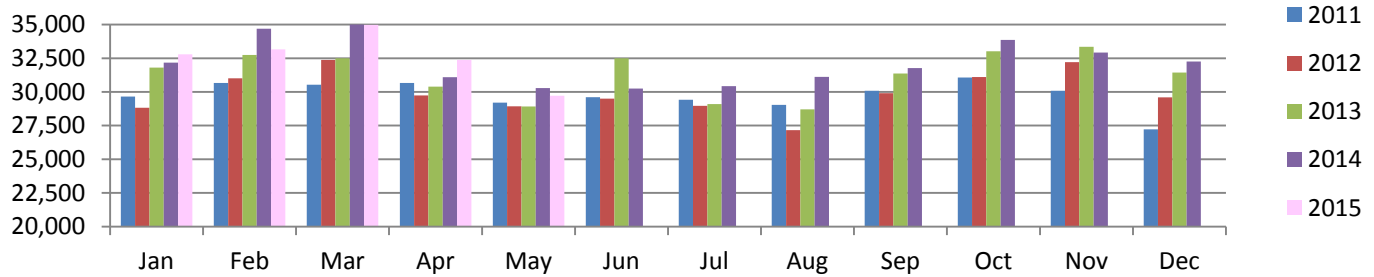


TOTAL MONTHLY AND AVERAGE WEEKDAY RIDERSHIP YEAR OVER YEAR COMPARISON CHARTS – METROMOVER

Monthly Metromover Boardings



Average Weekday Metromover Boardings



**“TOP 5 / BOTTOM 5” METROMOVER STATIONS AVERAGE WEEKDAY RIDERSHIP PERFORMANCE
YEAR OVER YEAR COMPARISONS**

Station	May-15	May-14	Absolute Delta	Percent Delta
Tenth Street	1,383	620	763	122.9%
Financial District	1,414	677	737	108.8%
Fifth Street	751	489	262	53.5%
Brickell	3,104	2,885	219	7.6%
Riverwalk	878	790	88	11.1%
Miami Avenue	320	819	-498	-60.9%
Government Center	8,150	8,555	-405	-4.7%
College/Bayside	1,810	2,132	-323	-15.1%
Omni	2,435	2,677	-242	-9.0%
College North	1,048	1,143	-95	-8.3%

Special Transportation Services



TOTAL MONTHLY AND AVERAGE WEEKDAY RIDERSHIP YEAR OVER YEAR COMPARISON CHARTS – SPECIAL TRANSPORTATION SERVICES (S.T.S.)

