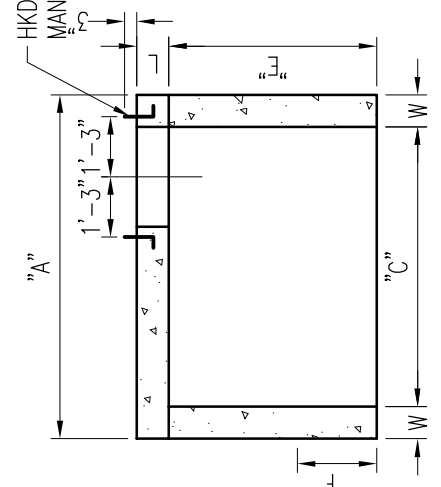
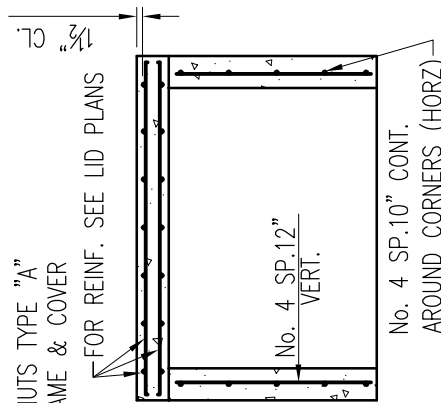


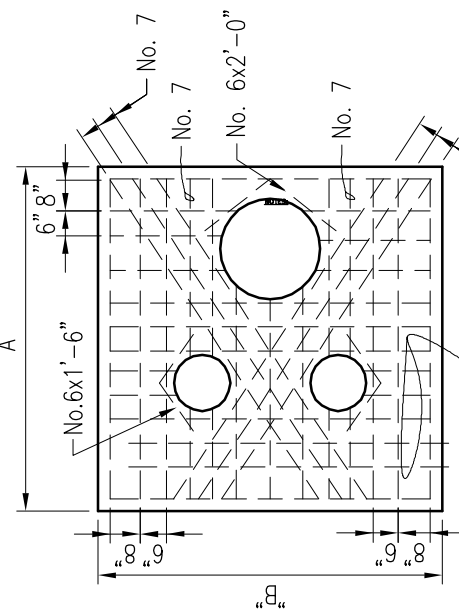
LID PLAN (TOP STL)

END VIEW



SECTION A-A

SECTION B-B



LID PLAN (BOT. STL)

JOB No.	"A"	"B"	"C"	"D"	"E"	"F"	"G"	"H"	"I"	"J"	"K"	"L"	"M"	W		
VARIOUS	7'-2"	7'-2"	5'-10"	5'-10"	4'-4"	1'-11"	1'-5"	1'-1/2"	1'-1/2"	1'-1/2"	2'-11"	1'-5"	1'-0"	8"	2'-0"	8"

NOTES:

1. CONCRETE FOR METER VAULT AND LID SHALL BE 3000 PSI.
2. LIFTING INSERTS ARE FOR 1"Ø BOLT.
3. STANDARD HOOK ON EACH END OF No. 7 RE-BARS ONLY IN LID.
4. IF USED FOR RECLAIMED WATER, THE COVER SHALL BE PERMANENTLY EMBOSSED WITH THE WORDING "RECLAIMED WATER - DO NOT DRINK - NO BEBER-PA BOUÉ". THE LID SHALL BE COLORED PURPLE.



ISSUE DATE	APPROVED BY
06/01/2008	V.F.C.

STANDARD DETAIL
STANDARD PRECAST
METER VAULT FOR
TRAFFIC AREAS

WS
2.19
SHEET 1 OF 1

XXXXX		
ITEM	CROSS REF.	SPEC. REF.