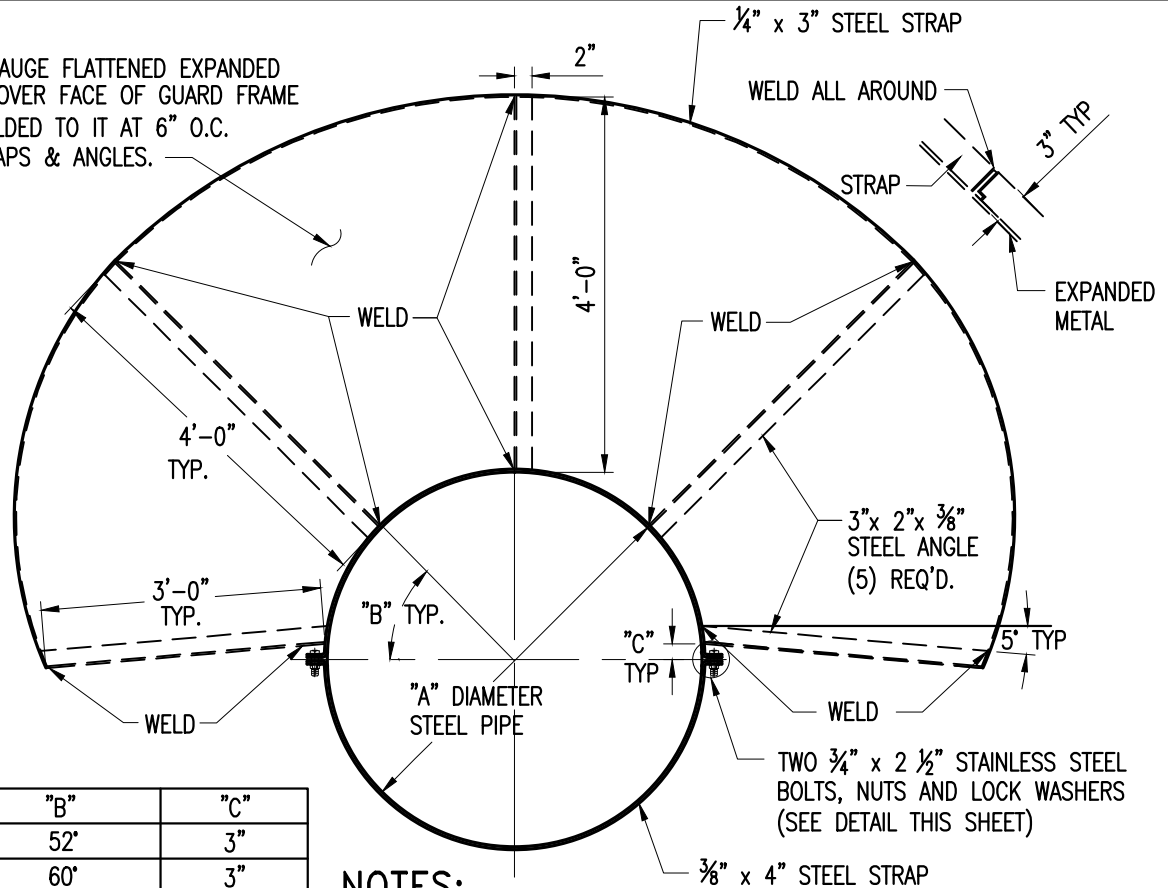


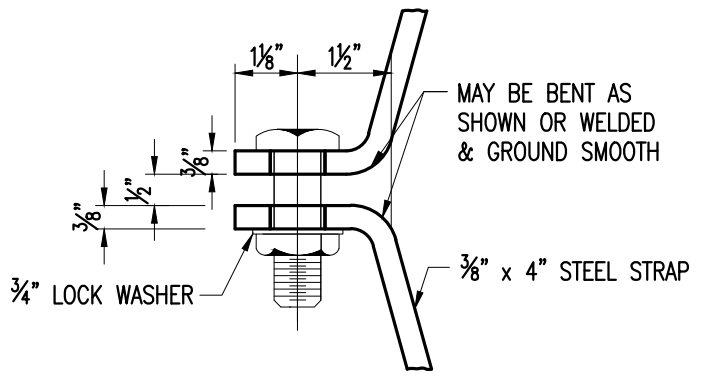
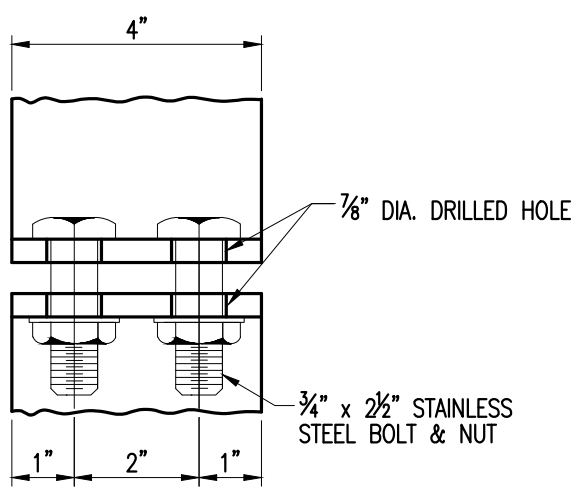
3/4"-9-11 GAUGE FLATTENED EXPANDED METAL TO COVER FACE OF GUARD FRAME & SPOT WELDED TO IT AT 6" O.C. TO ALL STRAPS & ANGLES.



"A"	"B"	"C"
12"	52"	3"
16"	60"	3"
20"	45"	3"
24"	45"	3"
30" & LARGER	45"	5"

NOTES:

1. PIPE GUARDS SHALL BE PLACED AT EACH END OF CANAL CROSSING.
2. ENTIRE GUARD ASSEMBLY TO BE HOT-DIP GALVANIZED AFTER FABRICATION, AND MOUNTING HARDWARE TO BE STAINLESS STEEL
3. CENTER ANGLES ON 4" STEEL STRAP.
4. PROVIDE A 2" WIDE X 3" HINGED OPENING WITH LATCH FOR PADLOCK CENTER ACCESS OVER PIPE, ON ARV SIDE ONLY.
5. 1/2" THICK NEOPRENE PAD TO INSULATE PIPE FROM CONTACT WITH ALL MOUNTING HARDWARE, PIPE GUARD HARDWARE, AND CONCRETE SURFACES.



ITEM	CROSS REF.	SPEC. REF.



ISSUE DATE	APPROVED BY
11/01/2006	V. E. F.
07/20/2016	D.V.

STANDARD DETAIL
**PIPE GUARD
 (12" PIPE & LARGER)
 AND PIPE GUARD BOLT DETAIL**

**GS
 1.4
 SHEET 1 OF 2**