

QUALITY. VALUE. ECONOMIC GROWTH.

WWW.MIAMIDADE.GOV/WATER



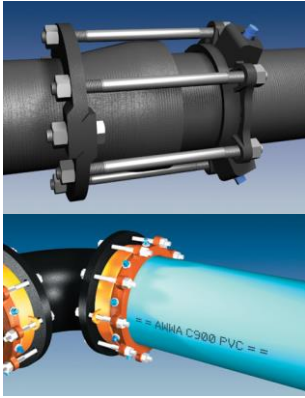
MIAMI-DADE
COUNTY

Sheet Number: 3.1

Product Specifications

Miami-Dade Water & Sewer Department
Address : 3071 SW 38th Ave, Miami, FL 33146
Phone : (305) 665-7477

Ductile Iron Mechanical Joint Restraints



Minimum Standards

- ANSI/AWWA: C111/A21.11, C151/A21.51, C110/A21.10
- ASTM A536
- MDWASD Specification: Section 15060

Other Requirements

- NSF61/ANSI for potable water applications

Applications

- Water and Sewer

PRE-APPROVED MANUFACTURER

- | | |
|----------------------|--------------------------|
| 1) EBAA Iron, Inc. | 5) Smith Blair |
| 2) Ford | 6) Star Pipe |
| 3) Sigma Corporation | 7) Tyler Union |
| 4) SIP | 8) American Flow Control |

Issue Date:

4-4-2016

Revised Date:

8-31-2017

APPROVED PRODUCTS / MODELS

SIZE	MANUFACTURER	MODEL	SUBMITTED
4" - 30"	EBAA Iron, Inc.	Series 1700	<input type="checkbox"/>
4" - 30"	EBAA Iron, Inc.	Series 2100	<input type="checkbox"/>
4" - 30"	EBAA Iron, Inc.	Series 1100	<input type="checkbox"/>
4" - 12"	EBAA Iron, Inc.	Series 1600TD	<input type="checkbox"/>
4" - 30"	EBAA Iron, Inc.	Series 1100HD	<input type="checkbox"/>
4" - 12"	EBAA Iron, Inc.	Tru-Dual Series 1500TD	<input type="checkbox"/>
4" - 30"	EBAA Iron, Inc.	Megaflange 2100	<input type="checkbox"/>
4" - 30"	Ford	Uni-flange Series 400, UFA 400-C-x series, adapter flange	<input type="checkbox"/>
4" - 12"	Ford	Uni-Flange Series 1390C	<input type="checkbox"/>
4" - 12"	Ford	FFCA-xxx style	<input type="checkbox"/>
4" - 30"	Sigma Corporation	SigmaFlange with One Lock SLDE	<input type="checkbox"/>
4" - 30"	Sigma Corporation	SIGMA ONE-LOK™ Series SLDEH	<input type="checkbox"/>
4" - 30"	Sigma Corporation	SIGMA ONE-LOK™ Series SLD	<input type="checkbox"/>
4" - 30"	Sigma Corporation	PV-LOK™ Series PWP for DIP	<input type="checkbox"/>
4" - 30"	Sigma Corporation	Series SSLDH	<input type="checkbox"/>
4" - 30"	Sigma Corporation	ONE-LOK Series SLDE	<input type="checkbox"/>
4" - 30"	Sigma Corporation	One LoK Series 'SSLD Split Gland for DIP	<input type="checkbox"/>
4" - 30"	SIP	EZ Grip	<input type="checkbox"/>
4" - 30"	Smith Blair	Cam Lok Series 111	<input type="checkbox"/>

APPROVED PRODUCTS / MODELS

SIZE	MANUFACTURER	MODEL	SUBMITTED
4" - 30"	Smith Blair	Bell-Lock Series 165	<input type="checkbox"/>
4" - 30"	Smith Blair	911 Flange - Lock Restrained FCA	<input type="checkbox"/>
4" - 30"	Smith Blair	Cam Lok Series 120	<input type="checkbox"/>
4" - 16"	Star Pipe	Series 1100C	<input type="checkbox"/>
4" - 30"	Star Pipe	Stargrip Series 3100P	<input type="checkbox"/>
4" - 30"	Star Pipe	Stargrip Series 3000	<input type="checkbox"/>
4" - 30"	Star Pipe	Super Flange Series 7200	<input type="checkbox"/>
4" - 30"	Star Pipe	StarGrip Series 3100S	<input type="checkbox"/>
4" - 12"	Star Pipe	Series 100	<input type="checkbox"/>
4" - 16"	Star Pipe	StarFlange Series 3200	<input type="checkbox"/>
4" - 30"	Star Pipe	Stargrip Series 3000 OS	<input type="checkbox"/>
4" - 30"	Star Pipe	Stargrip Series 3000 S	<input type="checkbox"/>
4" - 30"	Star Pipe	TAdem Series 3000 T	<input type="checkbox"/>
4" - 30"	Tyler Union	TUF GRIP TLD	<input type="checkbox"/>
4" - 12"	Tyler Union	TufGrip-Series 300C	<input type="checkbox"/>
4" - 12"	American Flow Control	Series 2500 Alpha Ends (Fire Hydrants and Gate Valves)	<input type="checkbox"/>

SIZES FURNISHED:

- | | | |
|------------------------------|------------------------------|--------------------------------|
| <input type="checkbox"/> 4" | <input type="checkbox"/> 12" | <input type="checkbox"/> 20" |
| <input type="checkbox"/> 6" | <input type="checkbox"/> 14" | <input type="checkbox"/> 24" |
| <input type="checkbox"/> 8" | <input type="checkbox"/> 16" | <input type="checkbox"/> 30" |
| <input type="checkbox"/> 10" | <input type="checkbox"/> 18" | <input type="checkbox"/> Other |

COMMENTS: _____

Approved by: David Vazquez, PE

Title: Specifications Manager