


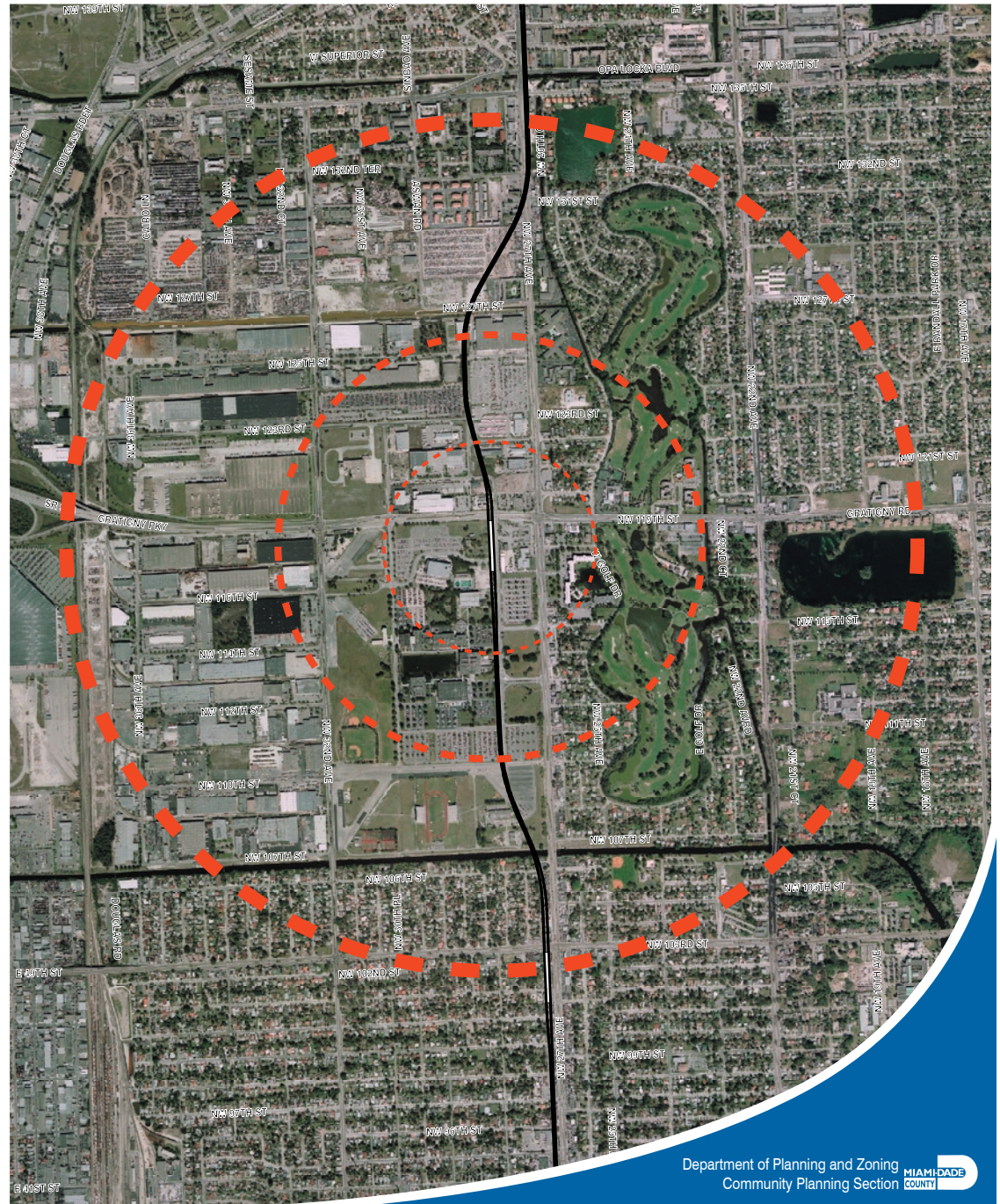
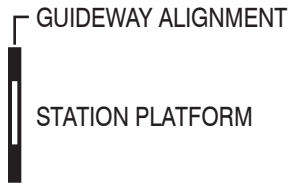
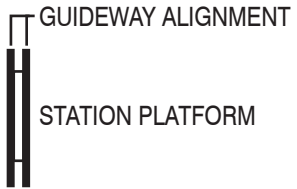


119 STREET STATION 2005 AERIAL ORTHOPHOTO

-  1 MILE STATION RADIUS
-  1/2 MILE STATION RADIUS
-  1/4 MILE STATION RADIUS



119 STREET STATION 2005 AERIAL ORTHOPHOTO



119 STREET STATION ZONING



GUIDEWAY ALIGNMENT

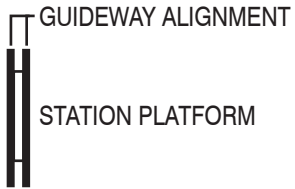


STATION PLATFORM

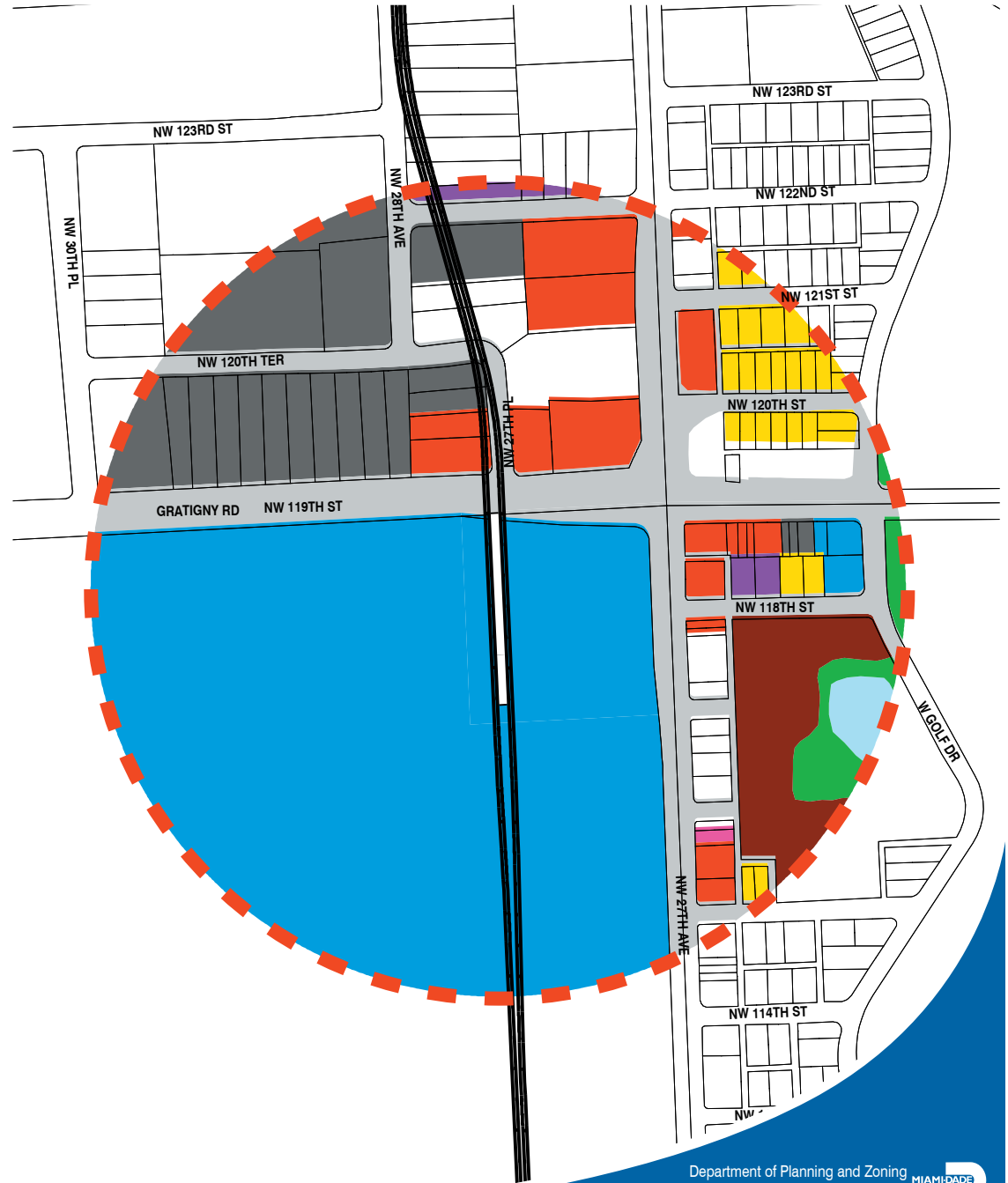
ZONE	ACRES
BU-1A	10.7
BU-2	18.3
BU-3	0.3
GU	49.8
IU-1	24.6
NONE	5.6
RU-1	7.5
RU-3B	0.0
RU-4M	8.8



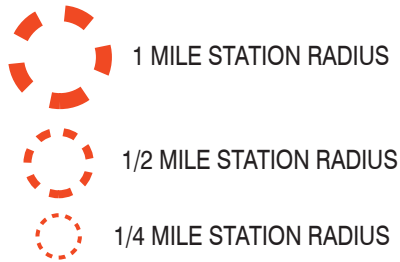
119 STREET STATION LAND USE



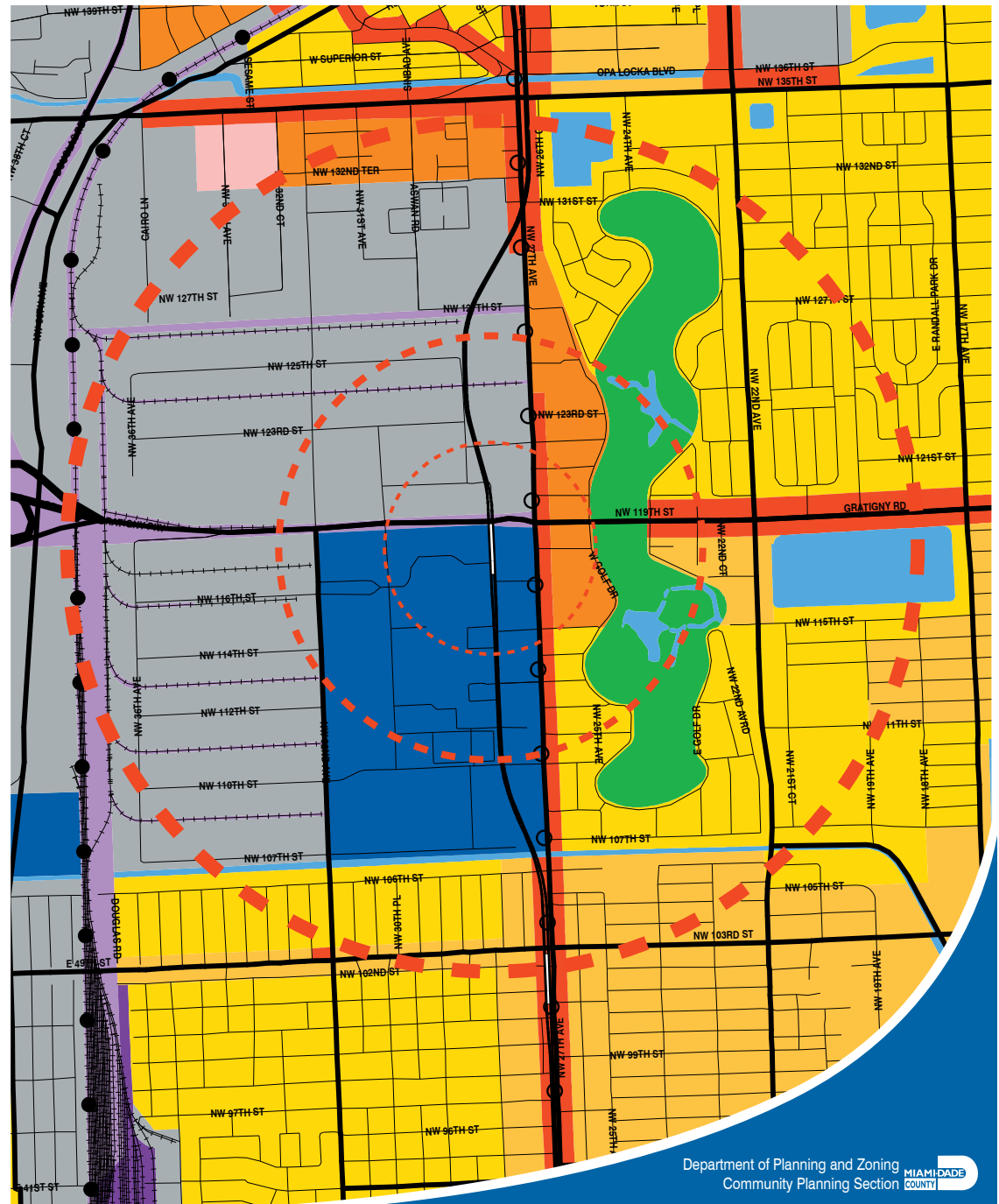
LAND USE	ACRES
Single Family	3.9
Multi-Family High Density	5.3
Shopping Centers, Commercial, Stadiums, Tracks	8.9
Office	0.1
Institutional	47.9
Industrial	15.3
Streets/Roads, Expressways, Ramps	24.2
Parks (Including Preserves and Conservation)	2.0
Vacant Unprotected	7.6
Inland Waters	0.9



119 STREET STATION LAND USE PLAN



2005 AND 2015 LAND USE PLAN FOR MIAMI-DADE COUNTY, FLORIDA



NOTE: This figure is a graphic representation drawn at a different scale than the Official Adopted 2005 and 2015 Land Use Plan (LUP) map, which was adopted at a scale of one inch to a mile. The LUP map with subsequent adopted amendments governs where this figure differs.