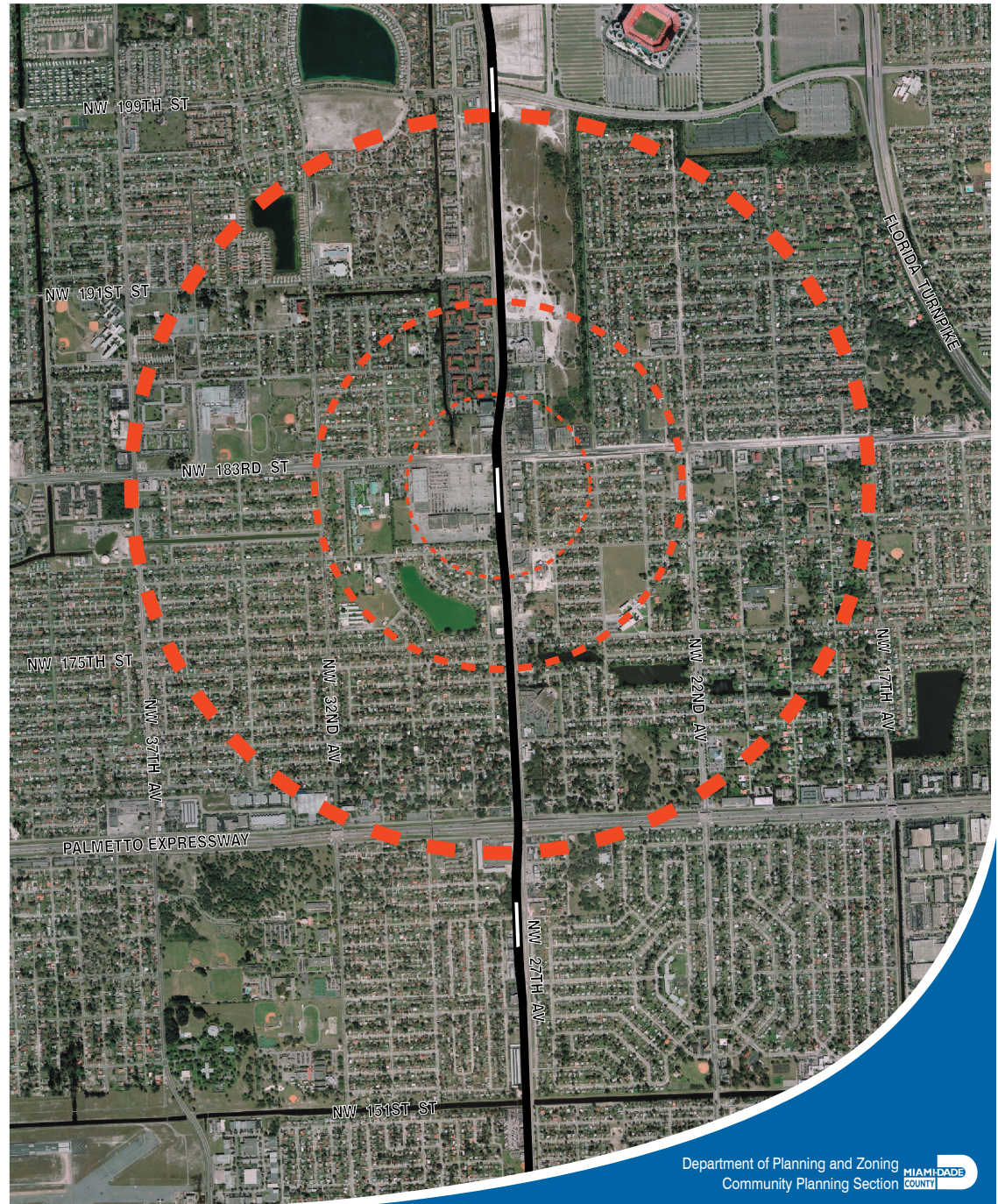
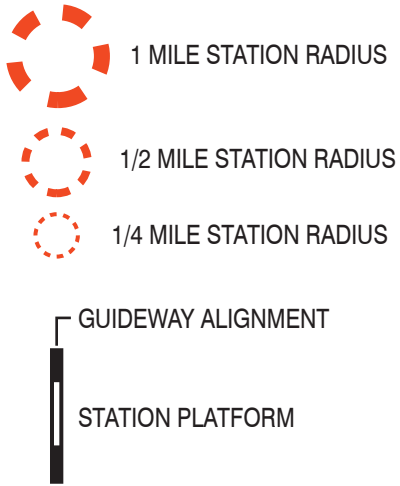
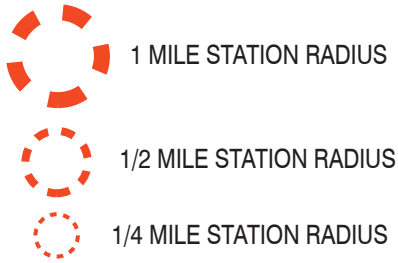


# 183RD STREET STATION 2005 AERIAL ORTHOPHOTO

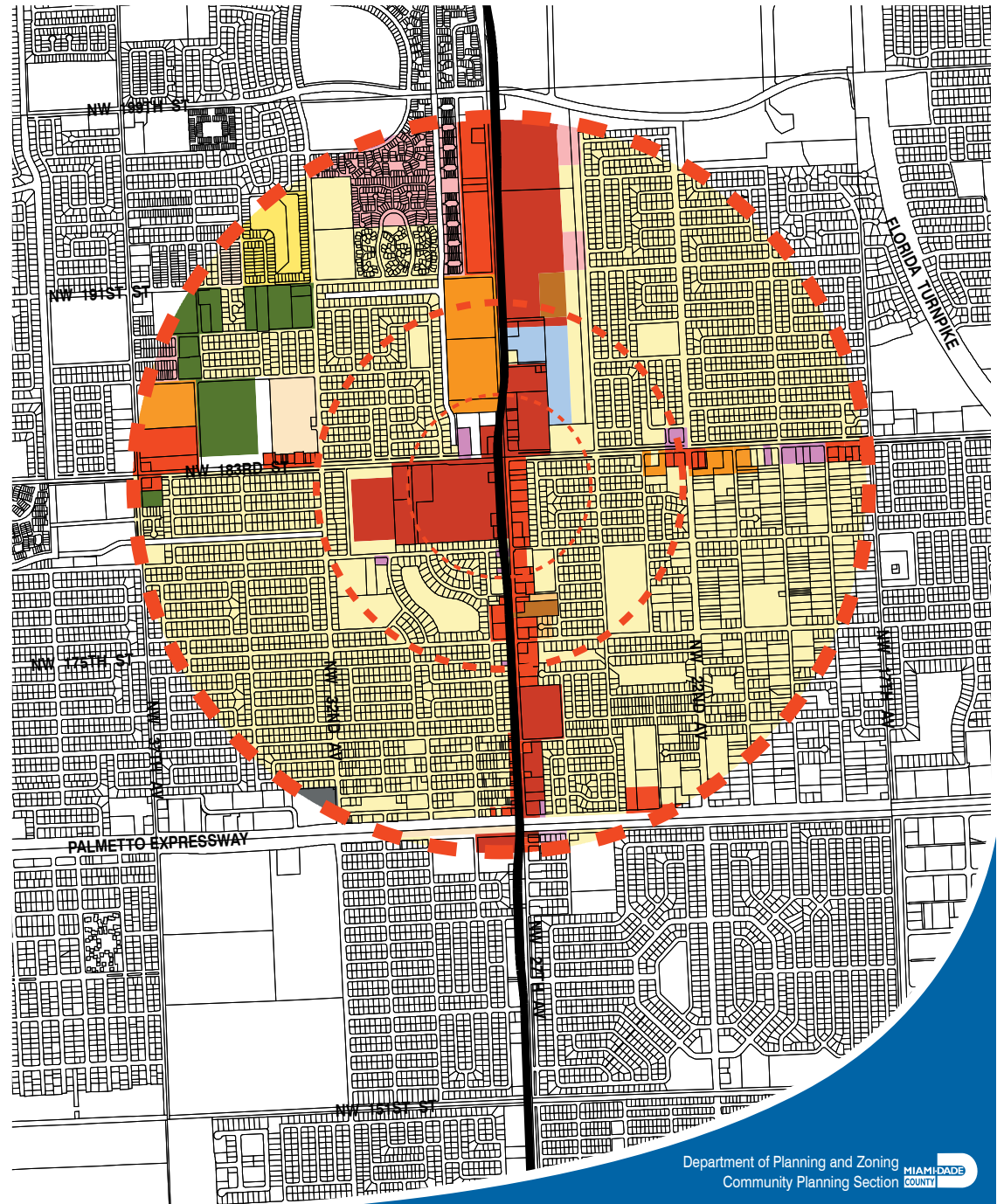




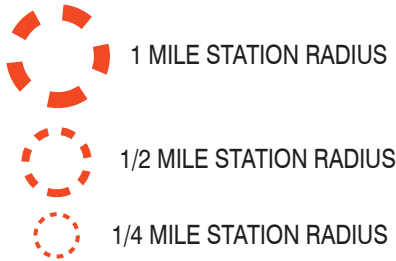
# 183RD STREET STATION ZONING



ZONE	ACRES
AU	53.6
BU-1	7.8
BU-1A	79.9
BU-2	166.6
BU-3	0.5
GP	22.3
GU	17.5
IU-C	3.5
NONE	32.2
OPD	17.8
RU-1	1,430.9
RU-1MA	27.4
RU-1Z	4.8
RU-2	3.2
RU-3M	14.3
RU-4A	8.3
RU-4L	40.8
RU-5	1.7
RU-5A	12.6
RU-TH	64.7
TOTAL	2,010.6



# 183RD STREET STATION LAND USE



LAND USE	ACRES
Agriculture	0.7
Communications, Utilities, Terminals, Plants	5.0
Expressway Right of Way Open Areas	7.0
Industrial	7.0
Inland Waters	53.8
Institutional	189.3
Low-Density Multi-Family	53.4
Office	6.9
Parks (Including Preserves and Conservation)	61.1
Shopping Centers, Commercial, Stadiums, Tracks	93.5
Single Family	866.7
Streets/Roads, Expressways, Ramps	435.8
Streets/Roads/Canals RW	2.2
Townhouse	30.4
Two-Family (Duplexes)	7.6
Vacant Unprotected	186.3
Vacant, Government Owned	4.0
<b>TOTAL</b>	<b>2010.6</b>

