



# TRANSPORTATION AND PUBLIC WORKS

## RIDERSHIP TECHNICAL REPORT

*Division of Performance and Materials Management*



# Table of Contents

<i>Table of Contents</i>	2-3
<b>All Modes Overview</b>	<b>4</b>
Total Monthly Weekday, Saturday and Sunday Monthly Boardings By Mode	5
Average Weekday, Saturday and Sunday Boardings by Mode	6
All-Modes Combined Total Monthly Ridership Comparisons By Fiscal Year	7
All Modes Combined Total Monthly and Average Weekday Ridership – Year over Year Comparison Charts	8
Metrobus Total Monthly Ridership Comparisons by Fiscal Year	9
Metrorail Total Monthly Ridership Comparisons by Fiscal Year	10
Metromover Total Monthly Ridership Comparisons by Fiscal Year	11
STS Total Monthly Ridership Comparisons by Fiscal Year	12
Average Weekday Ridership – Modal Splits	13
<b>Metrobus</b>	<b>14</b>
Monthly and Average Daily Bus Boardings by Route	15-18
Metrobus Holiday Boardings By Route	19-20
Bus Ridership by Service Type	21-22
Bus Routes as Ranked by Percentage of Average Weekday Ridership	23
Metrobus Cumulative Percentage Average Weekday Ridership Share by Route (Top 75%)	24
Total Monthly and Average Weekday Rail Ridership – Year over Year Comparison Charts	25
Bus “Top 5 / Bottom 5” Routes Average Weekday Ridership Performance	26
Metrobus Parking Patronage Summary	27

## Table of Contents (continued)

<b>Metrorail</b>	<b>28</b>
Monthly and Average Daily Rail Boardings by Station	29
Metrorail Holiday Boardings by Station	30
Metrorail Cumulative Percentage Average Weekday Ridership Share	31
Total Monthly and Average Weekday Rail Ridership – Year over Year Comparison Charts	32
“Top 5 / Bottom 5” Stations Average Weekday Ridership Performance	33
Metrorail Parking Patronage Summary	34
<b>Metromover</b>	<b>35</b>
Monthly and Average Daily Mover Boardings by Station	36
Metromover Holiday Boardings by Station	37
Metromover Cumulative Percentage Average Weekday Ridership Share	38
Total Monthly and Average Weekday Mover Ridership – Year over Year Comparison Charts	39
“Top 5 / Bottom 5” Stations Average Weekday Ridership Performance	40
<b>Special Transportation Services (STS)</b>	<b>41</b>
Total Monthly and Average Weekday STS Ridership – Year over Year Comparison Charts	42
<b>Ridership Seasonality</b>	<b>43</b>
Ridership Seasonality – Percent Ridership Share by Month and Calendar year for Each Mode	44

# All Modes Overview



## TOTAL MONTHLY WEEKDAY, SATURDAY AND SUNDAY BOARDINGS BY MODE January 2021

TRAVEL MODE	MONTH'S TOTAL WEEKDAYS RIDERSHIP (*)	MONTH'S TOTAL SATURDAYS RIDERSHIP	MONTH'S TOTAL SUNDAYS RIDERSHIP (**)	TOTAL MONTHLY RIDERSHIP	% CHANGE vs Jan 2020 TOTAL MONTH RIDERSHIP
<b>METROBUS (1)</b>	2,341,280	394,103	347,363	3,082,746	-28.6%
<b>METRORAIL (2)</b>	626,368	89,812	82,939	799,119	-49.3%
<b>METROMOVER (3)</b>	178,941	37,970	39,057	255,968	-69.8%
<b>STS (4)</b>	78,740	10,475	8,713	97,928	-34.3%
<b>TOTAL</b>	<b>3,225,329</b>	<b>532,360</b>	<b>478,072</b>	<b>4,235,761</b>	<b>-38.5%</b>

(\*) Total weekday ridership includes Monday, January 18, 2021 (Dr. Martin Luther King, Jr. Birthday Holiday); ridership on that day was as follows:

Metrobus	96,934
Metrorail	23,828
Metromover	6,868
STS	2,934

(\*\*) Total Sunday ridership includes Friday, January 1, 2021 (New Year's Day Holiday); ridership on that day was as follows:

Metrobus	53,294
Metrorail	13,272
Metromover	7,201
STS	960

- (1) As a result of the SARS-CoV-2 pandemic, Metrobus rides became fare-free on March 22, 2020; consequently, NextFare System farebox data was replaced by bus automatic passenger counter data starting on that date.
- (2) As a result of the SARS-CoV-2 pandemic, Metrorail rides became fare-free on March 22, 2020; consequently, NextFare System faregate data was replaced manually-counted data and other estimates starting on that date.
- (3) Beginning March 13, 2020 (day of National Emergency Declaration due to SARS-CoV-2 pandemic), only raw data from Metromover automatic passenger counters is reported; no estimates are performed after March 13, 2020.
- (4) Paratransit ridership data as reported by the contractor.

**AVERAGE WEEKDAY, SATURDAY AND SUNDAY BOARDINGS BY MODE  
January 2021**

<b>Travel Mode</b>	<b>Average Weekday (1)</b>	<b>Average Saturday</b>	<b>Average Sunday (2)</b>	<b>% Change Jan 2020 Weekday</b>	<b>% Change Jan 2020 Saturday</b>	<b>% Change Jan 2020 Sunday</b>
<b>METROBUS</b>	117,123	78,880	57,894	-27.7%	-19.9%	-20.2%
<b>METRORAIL</b>	31,713	18,066	13,933	-50.5%	-28.2%	-28.5%
<b>METROMOVER</b>	9,561	8,047	6,847	-70.2%	-56.9%	-57.6%
<b>STS</b>	3,937	2,095	1,452	-33.0%	-17.7%	-25.3%
<b>Totals</b>	<b>162,333</b>	<b>107,088</b>	<b>80,126</b>	<b>-38.5%</b>	<b>-26.1%</b>	<b>-27.3%</b>

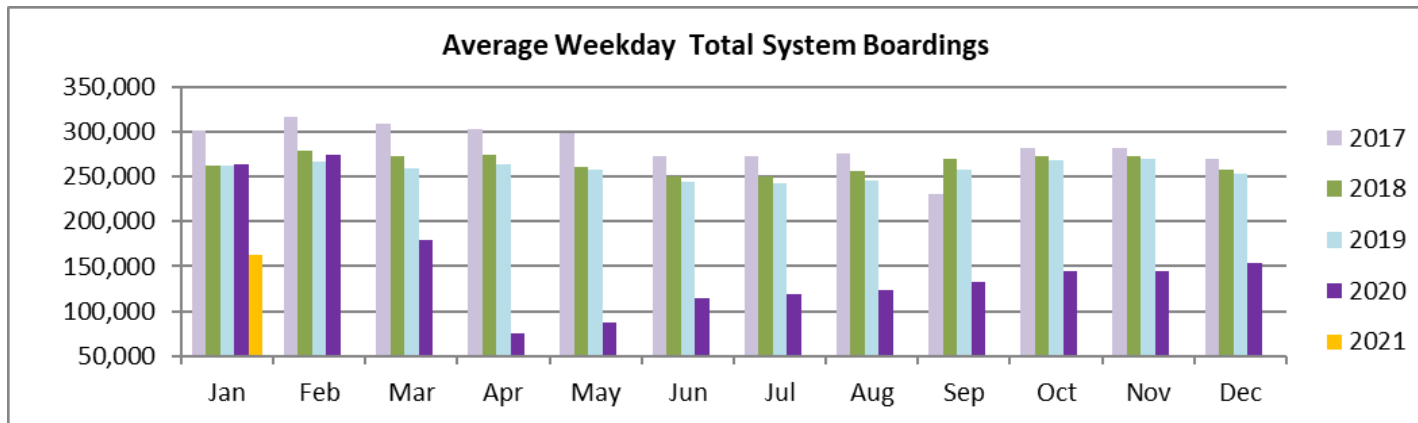
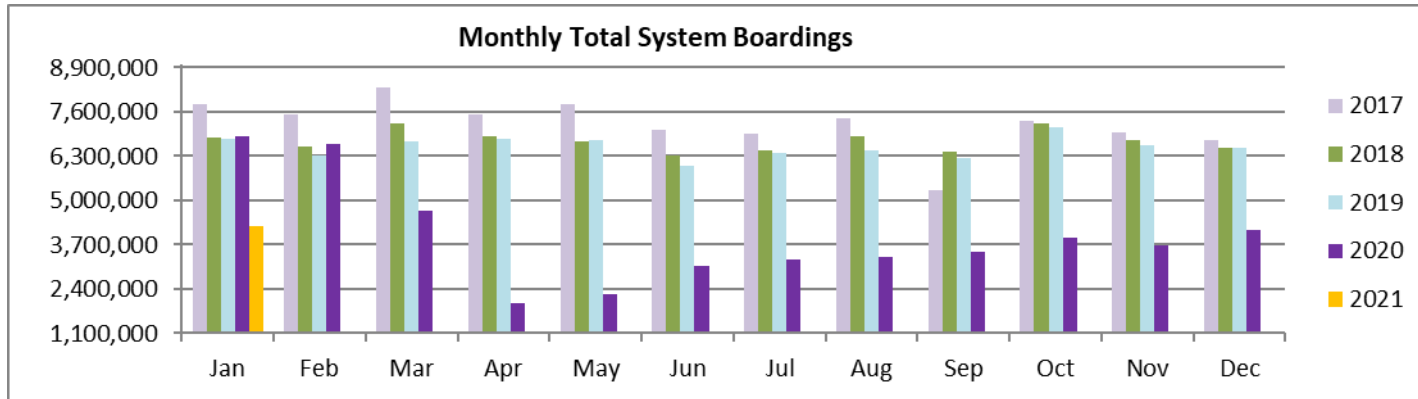
(1) Average Weekday ridership includes the Dr. Martin Luther King, Jr. Birthday holiday for Metrobus and STS, but excludes it for Metrorail and Metromover

(2) Average Sunday ridership includes New Year's Day for Metrobus and STS, but excludes it for Metrorail and Metromover

## ALL-MODES COMBINED TOTAL MONTHLY RIDERSHIP COMPARISONS BY FISCAL YEAR

<b>All Modes Month</b>	<b>FY 17</b>	<b>FY 18</b>	<b>FY 19</b>	<b>FY 20</b>	<b>FY 21</b>	<b>17 TO 18</b>	<b>18 TO 19</b>	<b>19 TO 20</b>	<b>20 TO 21</b>	<b>17 TO 21</b>
<b>Oct</b>	7,543,706	7,322,886	7,265,208	7,144,116	3,922,096	-2.9%	-0.8%	-1.7%	-45.1%	-48.0%
<b>Nov</b>	7,894,500	7,005,032	6,783,315	6,610,671	3,672,591	-11.3%	-3.2%	-2.5%	-44.4%	-53.5%
<b>Dec</b>	7,919,860	6,783,192	6,538,734	6,549,392	4,139,109	-14.4%	-3.6%	0.2%	-36.8%	-47.7%
<b>Jan</b>	7,814,784	6,834,741	6,797,602	6,890,225	4,235,761	-12.5%	-0.5%	1.4%	-38.5%	-45.8%
<b>Feb</b>	7,505,125	6,591,531	6,312,033	6,671,991		-12.2%	-4.2%	5.7%		
<b>Mar</b>	8,317,082	7,244,805	6,712,624	4,694,315		-12.9%	-7.3%	-30.1%		
<b>Apr</b>	7,513,151	6,869,802	6,802,085	1,989,545		-8.6%	-1.0%	-70.8%		
<b>May</b>	7,841,691	6,742,402	6,755,829	2,258,413		-14.0%	0.2%	-66.6%		
<b>Jun</b>	7,069,455	6,318,979	6,026,467	3,082,213		-10.6%	-4.6%	-48.9%		
<b>Jul</b>	6,969,807	6,449,526	6,402,110	3,272,074		-7.5%	-0.7%	-48.9%		
<b>Aug</b>	7,408,607	6,879,929	6,460,375	3,335,847		-7.1%	-6.1%	-48.4%		
<b>Sep</b>	5,284,604	6,412,945	6,240,212	3,501,209		21.4%	-2.7%	-43.9%		
<b>FY Total</b>	<b>89,082,372</b>	<b>81,455,770</b>	<b>79,096,594</b>	<b>56,000,011</b>		<b>-8.6%</b>	<b>-2.9%</b>	<b>-29.2%</b>		

## TOTAL MONTHLY AND AVERAGE WEEKDAY RIDERSHIP YEAR OVER YEAR COMPARISON CHARTS – ALL MODES COMBINED





## METROBUS TOTAL MONTHLY RIDERSHIP COMPARISONS BY FISCAL YEAR

Bus			Variance			Variance			Variance		
	FY 17	FY 18	17 to 18	FY 19	18 to 19	FY 20	19 to 20	FY 21	20 to 21	Variance	Variance
<b>Oct</b>	4,925,781	4,709,590	-4.4%	4,554,886	-3.3%	4,507,012	-1.1%	2,805,139	-37.8%		-43.1%
<b>Nov</b>	5,181,524	4,522,250	-12.7%	4,245,535	-6.1%	4,197,225	-1.1%	2,651,290	-36.8%		-48.8%
<b>Dec</b>	5,192,692	4,380,099	-15.6%	4,081,581	-6.8%	4,126,990	1.1%	3,022,530	-26.8%		-41.8%
<b>Jan</b>	5,084,085	4,307,001	-15.3%	4,195,911	-2.6%	4,316,998	2.9%	3,082,746	-28.6%		-39.4%
<b>Feb</b>	4,914,307	4,208,811	-14.4%	3,994,019	-5.1%	4,123,083	3.2%				
<b>Mar</b>	5,287,813	4,534,564	-14.2%	4,266,768	-5.9%	3,136,162	-26.5%				
<b>Apr</b>	4,895,697	4,360,997	-10.9%	4,291,135	-1.6%	1,544,316	-64.0%				
<b>May</b>	5,087,877	4,277,628	-15.9%	4,330,922	1.2%	1,734,609	-59.9%				
<b>Jun</b>	4,586,556	4,009,340	-12.6%	3,823,863	-4.6%	2,210,725	-42.2%				
<b>Jul</b>	4,539,259	4,080,664	-10.1%	4,094,906	0.3%	2,366,749	-42.2%				
<b>Aug</b>	4,780,589	4,326,980	-9.5%	4,109,613	-5.0%	2,422,014	-41.1%				
<b>Sep</b>	3,524,818	4,041,992	14.7%	3,971,220	-1.8%	2,546,923	-35.9%				
<b>FY Total</b>	<b>58,000,998</b>	<b>51,759,916</b>	<b>-10.8%</b>	<b>49,960,359</b>	<b>-3.5%</b>	<b>37,232,806</b>	<b>-25.5%</b>				

## METRORAIL TOTAL MONTHLY RIDERSHIP COMPARISONS BY FISCAL YEAR

<b>Rail</b>	<b>FY 17</b>	<b>FY 18</b>	<b>Variance 17 to 18</b>	<b>FY 19</b>	<b>Variance 18 to 19</b>	<b>FY 20</b>	<b>Variance 19 to 20</b>	<b>FY 21</b>	<b>Variance 20 to 21</b>	<b>Variance 17 to 21</b>
<b>Oct</b>	1,670,933	1,708,564	2.3%	1,757,225	2.8%	1,643,166	-6.5%	769,525	-53.2%	-53.9%
<b>Nov</b>	1,734,267	1,609,888	-7.2%	1,656,929	2.9%	1,469,448	-11.3%	699,492	-52.4%	-59.7%
<b>Dec</b>	1,734,768	1,517,341	-12.5%	1,553,804	2.4%	1,433,928	-7.7%	769,194	-46.4%	-55.7%
<b>Jan</b>	1,743,638	1,615,576	-7.3%	1,708,695	5.8%	1,576,340	-7.7%	799,119	-49.3%	-54.2%
<b>Feb</b>	1,676,215	1,545,581	-7.8%	1,501,458	-2.9%	1,549,118	3.2%			
<b>Mar</b>	1,926,434	1,700,714	-11.7%	1,554,851	-8.6%	1,027,319	-33.9%			
<b>Apr</b>	1,677,459	1,619,890	-3.4%	1,559,446	-3.7%	287,803	-81.5%			
<b>May</b>	1,787,885	1,618,504	-9.5%	1,531,597	-5.4%	337,696	-78.0%			
<b>Jun</b>	1,605,234	1,524,311	-5.0%	1,359,966	-10.8%	608,758	-55.2%			
<b>Jul</b>	1,500,243	1,527,380	1.8%	1,419,158	-7.1%	632,964	-55.4%			
<b>Aug</b>	1,693,524	1,632,471	-3.6%	1,463,646	-10.3%	641,275	-56.2%			
<b>Sep</b>	1,234,135	1,530,088	24.0%	1,427,726	-6.7%	654,244	-54.2%			
<b>Total</b>	<b>19,984,735</b>	<b>19,150,308</b>	<b>-4.2%</b>	<b>18,494,501</b>	<b>-3.4%</b>	<b>11,862,059</b>	<b>-35.9%</b>			

## METROMOVER TOTAL MONTHLY RIDERSHIP COMPARISONS BY FISCAL YEAR

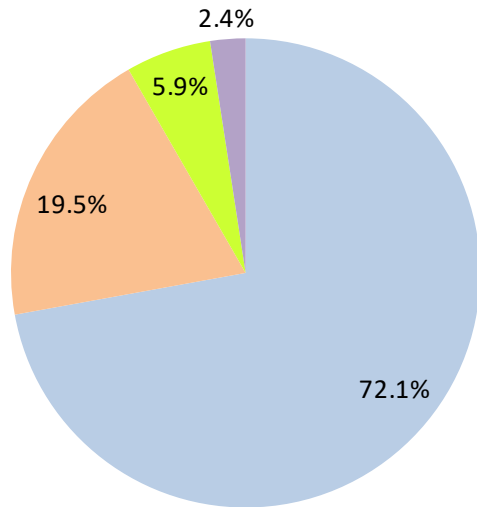
Mover	FY 17	FY 18	Variance 17 to 18	FY 19	Variance 18 to 19	FY 20	Variance 19 to 20	FY 21	Variance 20 to 21	Variance 17 to 21
	<b>Oct</b>	814,781	751,323	-7.8%	790,533	5.2%	831,234	5.1%	250,044	-69.9%
<b>Nov</b>	841,679	729,519	-13.3%	735,198	0.8%	799,632	8.8%	232,422	-70.9%	-72.4%
<b>Dec</b>	858,961	748,797	-12.8%	767,239	2.5%	849,832	10.8%	251,019	-70.5%	-70.8%
<b>Jan</b>	852,788	772,122	-9.5%	746,728	-3.3%	847,773	13.5%	255,968	-69.8%	-70.0%
<b>Feb</b>	780,514	698,107	-10.6%	675,160	-3.3%	855,398	26.7%			
<b>Mar</b>	949,045	859,143	-9.5%	737,814	-14.1%	441,200	-40.2%			
<b>Apr</b>	802,778	740,036	-7.8%	795,696	7.5%	130,549	-83.6%			
<b>May</b>	814,791	694,106	-14.8%	734,645	5.8%	146,454	-80.1%			
<b>Jun</b>	737,042	641,675	-12.9%	701,318	9.3%	203,637	-71.0%			
<b>Jul</b>	796,649	700,462	-12.1%	739,814	5.6%	210,596	-71.5%			
<b>Aug</b>	788,734	768,728	-2.5%	739,785	-3.8%	205,995	-72.2%			
<b>Sep</b>	425,641	698,505	64.1%	699,879	0.2%	219,696	-68.6%			
<b>Total</b>	<b>9,463,403</b>	<b>8,802,523</b>	<b>-7.0%</b>	<b>8,863,809</b>	<b>0.7%</b>	<b>5,741,996</b>	<b>-35.2%</b>			

## SPECIAL TRANSPORTATION SERVICES (STS) TOTAL MONTHLY RIDERSHIP COMPARISONS BY FISCAL YEAR

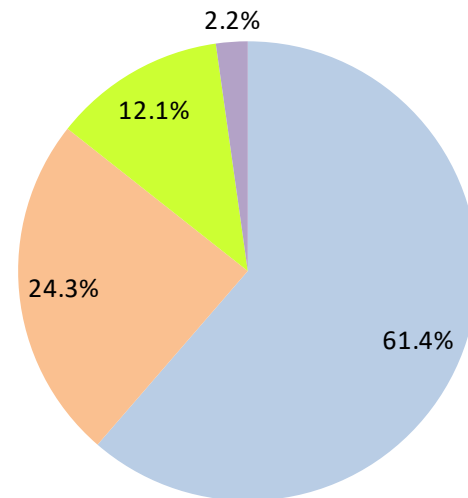
STS	FY 17	FY 18	Variance 17 to 18	FY 19	Variance 18 to 19	FY 20	Variance 19 to 20	FY 21	Variance 20 to 21	Variance 17 to 21
<b>Oct</b>	132,211	153,409	16.0%	162,564	6.0%	162,704	0.1%	97,388	-40.1%	-26.3%
<b>Nov</b>	137,030	143,375	4.6%	145,653	1.6%	144,366	-0.9%	89,387	-38.1%	-34.8%
<b>Dec</b>	133,439	136,955	2.6%	136,110	-0.6%	138,642	1.9%	96,366	-30.5%	-27.8%
<b>Jan</b>	134,273	140,042	4.3%	146,268	4.4%	149,114	1.9%	97,928	-34.3%	-27.1%
<b>Feb</b>	134,089	139,032	3.7%	141,396	1.7%	144,392	2.1%			
<b>Mar</b>	153,790	150,384	-2.2%	153,191	1.9%	89,634	-41.5%			
<b>Apr</b>	137,217	148,879	8.5%	155,808	4.7%	26,877	-82.7%			
<b>May</b>	151,138	152,164	0.7%	158,665	4.3%	39,654	-75.0%			
<b>Jun</b>	140,623	143,653	2.2%	141,320	-1.6%	59,093	-58.2%			
<b>Jul</b>	133,656	141,020	5.5%	148,232	5.1%	61,765	-58.3%			
<b>Aug</b>	145,760	151,750	4.1%	147,331	-2.9%	66,563	-54.8%			
<b>Sep</b>	100,010	142,360	42.3%	141,387	-0.7%	80,346	-43.2%			
<b>Total</b>	<b>1,633,236</b>	<b>1,743,023</b>	<b>6.7%</b>	<b>1,777,925</b>	<b>2.0%</b>	<b>1,163,150</b>	<b>-34.6%</b>			

# AVERAGE WEEKDAY RIDERSHIP - MODAL SPLITS

January 2021



January 2020



- Bus
- Rail
- Mover
- STS

(\*) Percentages rounded to the nearest tenth of 1%.

# Metrobus



## METROBUS MONTHLY AND AVERAGE DAILY BOARDINGS BY ROUTE

Route	Average Weekday	Average Weekday	Percent Change	Average Saturday	Average Saturday	Percent Change	Average Sunday	Average Sunday	Percent Change	Total Monthly	Total Monthly	Percent Change
	Jan-21	Jan-20	21 vs 20	Jan-21	Jan-20	21 vs 20	Jan-21	Jan-20	21 vs 20	Jan-21	Jan-20	21 vs 20
1 (*)	174	183	-5.1%	213	244	-12.8%	154	179	-14.1%	5,464	5,899	-7.4%
2	1,879	2,328	-19.3%	1,036	1,473	-29.7%	668	894	-25.2%	46,772	61,583	-24.1%
3	4,058	4,952	-18.1%	3,842	5,440	-29.4%	3,063	4,462	-31.4%	118,740	153,012	-22.4%
7	2,156	3,012	-28.4%	1,357	1,822	-25.5%	1,018	1,294	-21.4%	56,010	80,010	-30.0%
8	3,183	3,617	-12.0%	2,010	2,000	0.5%	1,571	1,454	8.1%	83,127	94,853	-12.4%
9	5,112	5,125	-0.3%	2,910	3,192	-8.8%	2,171	2,373	-8.5%	129,812	137,382	-5.5%
10	1,408	2,154	-34.7%	1,497	1,855	-19.3%	957	1,388	-31.1%	41,376	61,756	-33.0%
11	5,531	6,882	-19.6%	4,051	5,301	-23.6%	2,431	3,693	-34.2%	145,460	191,062	-23.9%
12	2,132	2,576	-17.3%							42,633	56,675	-24.8%
16	1,272	1,774	-28.3%	1,293	1,578	-18.0%	564	966	-41.6%	35,285	50,162	-29.7%
17	2,751	3,770	-27.0%	1,825	2,551	-28.5%	1,061	1,683	-37.0%	70,507	101,568	-30.6%
19	975	1,422	-31.4%							19,505	31,286	-37.7%
21	1,518	1,801	-15.7%							30,360	39,613	-23.4%
22	2,501	3,586	-30.2%	1,564	2,234	-30.0%	1,058	1,526	-30.7%	64,195	95,454	-32.7%
<b>24 - Coral Way Limited</b>	1,289	1,719	-25.0%	1,145	1,288	-11.1%	1,082	995	8.7%	37,993	47,946	-20.8%
27	5,346	6,563	-18.5%	3,655	4,379	-16.5%	2,378	2,855	-16.7%	139,460	176,169	-20.8%
29 (*)	352	566	-37.7%							7,044	12,443	-43.4%
<b>31 - BUSWAY LOCAL</b>	591	1,047	-43.6%	848	814	4.2%	575	622	-7.6%	19,511	29,405	-33.6%
32	1,738	2,304	-24.6%	873	1,115	-21.7%	500	718	-30.3%	42,130	58,733	-28.3%
33	1,034	1,634	-36.7%	815	1,010	-19.3%	477	555	-14.1%	27,624	42,773	-35.4%
<b>34 EXPRESS (*)</b>	807	1,845	-56.3%							16,137	40,595	-60.2%
35 (*)	1,715	2,413	-28.9%	1,135	1,143	-0.7%	896	895	0.1%	45,348	62,130	-27.0%
36	1,875	2,442	-23.2%	1,495	1,377	8.5%	1,080	1,036	4.2%	51,444	64,417	-20.1%
37	2,535	3,222	-21.3%	1,710	2,235	-23.5%	1,195	1,676	-28.7%	66,421	88,202	-24.7%
38	4,242	6,468	-34.4%	3,659	5,065	-27.8%	3,134	3,923	-20.1%	121,927	182,170	-33.1%
<b>39 EXPRESS (*)</b>	204	883	-76.9%							4,077	19,428	-79.0%

## METROBUS MONTHLY AND AVERAGE DAILY BOARDINGS BY ROUTE

Route	Average Weekday	Average Weekday	Percent Change	Average Saturday	Average Saturday	Percent Change	Average Sunday	Average Sunday	Percent Change	Total Monthly	Total Monthly	Percent Change
	Jan-21	Jan-20	21 vs 20	Jan-21	Jan-20	21 vs 20	Jan-21	Jan-20	21 vs 20	Jan-21	Jan-20	21 vs 20
40	1,135	1,671	-32.1%	488	665	-26.6%	367	437	-16.2%	27,338	41,598	-34.3%
42	618	817	-24.3%	575	588	-2.2%	298	358	-16.9%	17,025	22,112	-23.0%
46 - LIBERTY CITY CONN. (*)	24	34	-28.7%							480	741	-35.2%
51 - FLAGLER MAX	2,222	3,050	-27.2%							44,439	67,107	-33.8%
52	873	1,236	-29.4%	609	669	-9.0%	447	468	-4.5%	23,190	32,217	-28.0%
54	2,263	2,856	-20.8%	1,600	1,883	-15.0%	1,040	1,188	-12.5%	59,501	76,304	-22.0%
56 (*)	168	349	-51.8%							3,363	7,673	-56.2%
57 (*)	253	384	-33.9%							5,069	8,441	-39.9%
62	1,544	1,749	-11.7%	1,207	1,395	-13.4%	741	912	-18.8%	41,362	48,611	-14.9%
71 (*)	362	656	-44.8%	195	297	-34.3%	162	138	17.1%	9,190	16,316	-43.7%
72 (*)	378	733	-48.4%	265	400	-33.7%	206	271	-24.0%	10,122	19,078	-46.9%
73	1,427	2,011	-29.0%	726	1,006	-27.8%	397	445	-10.9%	34,543	50,481	-31.6%
75	1,115	1,481	-24.7%	416	535	-22.3%	251	274	-8.3%	25,892	36,091	-28.3%
77	5,842	7,154	-18.3%	3,223	4,357	-26.0%	2,318	2,715	-14.6%	146,859	188,385	-22.0%
82 - WESTCHESTER CIRC. (*)	26	55	-53.2%	44	60	-26.3%				738	1,456	-49.3%
87	1,103	1,472	-25.1%	404	498	-18.9%	241	293	-17.5%	25,531	35,841	-28.8%
88	1,438	2,014	-28.6%	1,224	1,740	-29.7%	835	1,207	-30.8%	39,894	57,301	-30.4%
93 - BISCAYNE MAX	1,561	3,220	-51.5%							31,222	70,834	-55.9%
95 EXPRESS (*)	376	1,742	-78.4%							7,527	38,318	-80.4%
99	1,022	1,422	-28.1%	862	980	-12.1%	546	629	-13.2%	28,025	38,345	-26.9%
101 - A (*)	104	165	-37.0%	52	76	-31.1%	34	55	-39.0%	2,538	4,200	-39.6%
102 - B	644	1,621	-60.3%	421	857	-50.9%	329	716	-54.0%	16,949	42,664	-60.3%
103 - C	312	435	-28.4%	243	287	-15.3%	160	204	-21.3%	8,410	11,739	-28.4%
104	317	863	-63.2%	149	541	-72.4%	107	298	-64.2%	7,734	22,633	-65.8%
105 - E	989	1,259	-21.4%	635	725	-12.4%	588	631	-6.8%	26,490	33,758	-21.5%



## METROBUS MONTHLY AND AVERAGE DAILY BOARDINGS BY ROUTE

Route	Average Weekday	Average Weekday	Percent Change	Average Saturday	Average Saturday	Percent Change	Average Sunday	Average Sunday	Percent Change	Total Monthly	Total Monthly	Percent Change
	Jan-21	Jan-20	21 vs 20	Jan-21	Jan-20	21 vs 20	Jan-21	Jan-20	21 vs 20	Jan-21	Jan-20	21 vs 20
107 - G	926	1,656	-44.1%	1,065	1,055	1.0%	809	906	-10.7%	28,689	45,186	-36.5%
108 - H	384	499	-23.1%	421	415	1.5%	403	326	23.6%	12,201	14,266	-14.5%
110 - J	1,991	2,563	-22.3%	1,546	2,009	-23.0%	1,274	1,548	-17.7%	55,198	72,153	-23.5%
112 - L	7,041	7,460	-5.6%	5,611	6,177	-9.2%	3,630	4,700	-22.8%	190,657	212,322	-10.2%
113 - M	443	818	-45.9%	387	483	-19.9%	224	430	-47.8%	12,130	22,080	-45.1%
115 (*)	194	167	16.7%	171	106	61.3%	169	73	131.7%	5,758	4,455	29.2%
119 - S	7,825	8,738	-10.4%	6,552	7,512	-12.8%	6,108	7,578	-19.4%	225,921	260,172	-13.2%
120 - BEACH MAX	4,529	6,664	-32.0%	3,389	5,192	-34.7%	2,265	3,508	-35.4%	121,111	184,908	-34.5%
132 TRI-RAIL (DORAL)	30	1	2502.9%							562	25	2148.0%
135 (*)	777	1,331	-41.6%	325	509	-36.0%	245	333	-26.5%	18,642	32,985	-43.5%
136	45	135	-66.4%							909	2,974	-69.4%
137 - WEST DADE CONN.	1,018	1,537	-33.8%	870	1,110	-21.6%	639	759	-15.8%	28,541	42,053	-32.1%
150 - MIAMI BEACH AIRPORT FLYER (*)	1,089	1,732	-37.1%	1,067	1,695	-37.1%	1,127	1,618	-30.4%	33,878	52,978	-36.1%
155 - BISCAYNE GARDENS CIRCULATOR (*)	34	42	-20.3%							676	933	-27.5%
183	2,406	3,122	-22.9%	1,478	1,915	-22.8%	1,198	1,275	-6.0%	62,696	82,706	-24.2%
200 - CUTLER BAY LOCAL	121	157	-22.8%	107	145	-26.2%	53	57	-8.2%	3,268	4,310	-24.2%
202 - LITTLE HAITI CONN. (*)	127	132	-3.8%	110	53	107.2%	103	47	118.1%	3,702	3,349	10.5%
207 (7st) - LITTLE HAVANA CIRC	664	1,550	-57.2%	769	905	-15.0%	534	628	-14.9%	20,325	40,851	-50.2%
208 (8st) - LITTLE HAVANA CIRC	752	1,402	-46.3%	764	1,157	-34.0%	677	882	-23.2%	22,925	39,879	-42.5%
210 - SKYLAKE CIRC (*)	304	275	10.5%	165	92	80.3%	122	169	-28.3%	7,633	7,265	5.1%
211 - OVERTOWN CIRC. (*)	52	59	-12.0%							1,042	1,303	-20.0%
212 - SWEETWATER CIRC. (*)	10	13	-23.5%							194	279	-30.5%
217 - BUNCHE PARK CIRC (*)	65	88	-25.4%							1,309	1,929	-32.1%
238 EAST/WEST CONN.	281	455	-38.3%							5,614	10,008	-43.9%

## METROBUS MONTHLY AND AVERAGE DAILY BOARDINGS BY ROUTE

Route	Average Weekday	Average Weekday	Percent Change	Average Saturday	Average Saturday	Percent Change	Average Sunday	Average Sunday	Percent Change	Total Monthly	Total Monthly	Percent Change
	Jan-21	Jan-20	21 vs 20	Jan-21	Jan-20	21 vs 20	Jan-21	Jan-20	21 vs 20	Jan-21	Jan-20	21 vs 20
246 - NIGHT OWL	77	98	-21.1%	73	91	-19.6%	83	93	-11.1%	2,400	2,973	-19.3%
248 - PRINCETON CIRCULATOR (*)	69	128	-46.3%							1,375	2,815	-51.2%
252 - CORAL REEF MAX	449	830	-45.9%	241	328	-26.5%	178	214	-17.1%	11,254	20,644	-45.5%
254 - BROWNSVILLE CIRC. (*)	14	17	-18.8%							282	382	-26.2%
267 - LUDLAM LIMITED (*)	88	136	-35.0%							1,768	2,992	-40.9%
272 SUNSET KAT (*)	239	508	-52.9%							4,780	11,168	-57.2%
277 - 7th AVENUE MAX	484	640	-24.5%							9,670	14,082	-31.3%
286 - NORTH POINTE CIRC. (*)	33	102	-68.0%	32	49	-34.4%				814	2,444	-66.7%
287 - SAGA BAY MAX	156	345	-54.8%							3,119	7,597	-58.9%
297-27th AVENUE ORANGE MAX	788	1,346	-41.5%							15,759	29,610	-46.8%
301 DADE-MONROE EXPRESS(*)	848	856	-0.9%	897	879	2.1%	846	803	5.4%	26,527	26,367	0.6%
302 CARD SOUND EXPRESS(*)	77	86	-10.2%	72	60	20.3%	45	69	-34.7%	2,180	2,482	-12.2%
338 - WEEKEND EXPRESS				148	237	-37.3%	112	203	-44.9%	1,116	1,961	-43.1%
344 (*)	74	96	-23.1%							1,474	2,108	-30.1%
500	55	39	42.2%	68	43	59.5%	69	51	37.0%	1,853	1,272	45.7%
12/21 WEEKEND INTERL.				2,264	2,551	-11.2%	1,885	1,888	-0.1%	22,631	19,643	15.2%
GREEN HILLS SHUTTLE (*)	5	5	0.0%							21	21	0.0%
KINGS CREEK SHUTTLE (*)	6	30	-79.9%							24	149	-83.9%
SIERRALAKES SHUTTLE (*)	17	19	-14.1%							66	96	-31.3%
ROBERT SHARP SHUTTLE (*)	20	5	276.2%							79	21	276.2%
AHEPA SHUTTLE (*)	25	20	21.3%							98	101	-3.0%
FEDERATION GARDENSSHUTTLE (*)				16	29	-43.4%				82	87	-5.7%
<b>Total (†)</b>	<b>117,123</b>	<b>161,892</b>	<b>-27.7%</b>	<b>78,880</b>	<b>98,464</b>	<b>-19.9%</b>	<b>57,894</b>	<b>72,585</b>	<b>-20.2%</b>	<b>3,082,746</b>	<b>4,316,998</b>	<b>-28.6%</b>

(1) Includes shuttles and those routes which were not run both years.

(2) Nearly every bus route experienced year-over-year losses as a result of the SARS-CoV-2 pandemic; rides were fare-free beginning March 22, 2020.

(\*) The following routes are entirely operated under contract: 1, 29, 34, 35, 39, 46, 56, 57, 71, 72, 82, 95, 101-A, 115, 135, 150, 155, 202, 210, 211, 212, 217, 248, 254, 267, 272, 286, 301, 302 and 344, although some supplemental runs may be performed by DTPW. Conversely, a few routes that are nominally run by DTPW may have a few supplemental runs operated by contractors; Dade-Monroe routes 301 and 302 as well as six Lifeline routes are also under contracted operation.

(†) Not shown are several express routes were suspended at the end of March or the beginning of April 2020, due to the SARS-CoV-2 pandemic, while other routes had alignment and schedule modifications made to them, in an ongoing effort to optimize service delivery; the September 2019 totals include those routes.

## METROBUS HOLIDAY BOARDINGS BY ROUTE New Year's Day

ROUTES	New Year's Day 2020	New Year's Day 2021	Pct Delta	ROUTES	New Year's Day 2020	New Year's Day 2021	Pct Delta
1 (*)	117	94	-19.7%	88	944	560	-40.7%
2	850	881	3.6%	99	536	493	-8.0%
3	4,197	2,900	-30.9%	101 (*)	45	23	-48.9%
7	976	625	-36.0%	102	574	145	-74.7%
8	1,152	1,400	21.5%	103	200	186	-7.0%
9	2,088	2,614	25.2%	104	216	3	-98.6%
10	1,066	989	-7.2%	105	496	527	6.3%
11	2,641	1,877	-28.9%	107	876	671	-23.4%
12	986	772	-21.7%	108	301	307	2.0%
16	751	771	2.7%	110	1,452	1,283	-11.6%
17	1,478	1,330	-10.0%	112	4,539	3,355	-26.1%
21	803	959	19.4%	113	395	248	-37.2%
22	1,389	1,115	-19.7%	115 (*)	69	161	133.3%
24	687	530	-22.9%	119	7,999	5,721	-28.5%
27	2,647	2,209	-16.5%	120	3,194	2,276	-28.7%
31	536	560	4.5%	135 (*)	246	239	-2.8%
32	638	224	-64.9%	137	526	471	-10.5%
33	425	451	6.1%	150 (*)	2,103	1,058	-49.7%
35 (*)	862	816	-5.3%	183	1,001	1,374	37.3%
36	657	998	51.9%	200	38	34	-10.5%
37	1,297	1,010	-22.1%	202 (*)	40	20	-50.0%
38	3,042	2,210	-27.4%	207	590	466	-21.0%
40	302	265	-12.3%	208	632	566	-10.4%
42	245	216	-11.8%	210 (*)	117	120	2.6%
52	405	245	-39.5%	246 (*)	96	83	-13.5%
54	1,034	1,078	4.3%	252	160	109	-31.9%
62	888	622	-30.0%	301 (*)	634	783	23.5%
71 (*)	91	89	-2.2%	302 (*)	76	55	-27.6%
72 (*)	160	98	-38.8%	338	118	51	-56.8%
73	276	290	5.1%	500	53	50	-5.7%
75	278	258	-7.2%				
77	2,287	3,234	41.4%				
87	189	126	-33.3%				
				<b>Total (1)</b>	<b>63,706</b>	<b>53,294</b>	<b>-16.3%</b>

(\*) Routes currently under entirely contracted operation

(1) Excludes lifeline shuttles; some routes were not run both years on New Year's Day

## METROBUS HOLIDAY BOARDINGS BY ROUTE Dr. Martin Luther King, Jr.'s Birthday

ROUTES	Dr. MLK, Jr. B-Day 2020	Dr. MLK, Jr. B-Day 2021	Pct Delta	ROUTES	Dr. MLK, Jr. B-Day 2020	Dr. MLK, Jr. B-Day 2021	Pct Delta	ROUTES	Dr. MLK, Jr. B-Day 2020	Dr. MLK, Jr. B-Day 2021	Pct Delta
1 (*)	49	213	334.7%	57	161	206	28.0%	183	2,337	2,134	-8.7%
2	1,580	1,139	-27.9%	62	1,029	1,201	16.7%	195	87		
3	4,142	2,785	-32.8%	71 (*)	434	319	-26.5%	196	112		
7	2,460	1,706	-30.7%	72 (*)	677	305	-54.9%	200	132	98	-25.8%
8	2,959	2,850	-3.7%	73	1,669	1,188	-28.8%	202 (*)	107	157	46.7%
9	4,450	6,008	35.0%	75	895	816	-8.8%	204	434		
10	1,802	817	-54.7%	77	5,328	4,757	-10.7%	207	1,222	274	-77.6%
11	5,748	5,257	-8.5%	79	282			208	1,266	589	-53.5%
12	1,710	1,672	-2.2%	82	32	18	-43.8%	210 (*)	262	330	26.0%
16	1,537	1,066	-30.6%	87	1,210	757	-37.4%	211 (*)	50	20	-60.0%
17	2,327	1,803	-22.5%	88	1,846	1,042	-43.6%	212 (*)	13	9	-30.8%
19	779	1,015	30.3%	93	2,327	1,492	-35.9%	217 (*)	56	22	-60.7%
21	1,094	379	-65.4%	95 (*)	468	132	-71.8%	238	413	227	-45.0%
22	2,299	1,983	-13.7%	99	1,114	860	-22.8%	246	92	64	-30.4%
24	1,405	987	-29.8%	101 (*)	99	98	-1.0%	248 (*)	87	63	-27.6%
27	4,329	4,193	-3.1%	102	1,322	689	-47.9%	252	492	284	-42.3%
29 (*)	460	321	-30.2%	103	357	365	2.2%	254 (*)	10	5	-50.0%
31	775	401	-48.3%	104	528	229	-56.6%	267 (*)	89	61	-31.5%
32	1,581	1,275	-19.4%	105	1,181	645	-45.4%	272 (*)	306	186	-39.2%
33	1,190	842	-29.2%	107	1,421	887	-37.6%	277	336	377	12.2%
34 (*)	827	676	-18.3%	108	500	353	-29.4%	286 (*)	71	31	-56.3%
35 (*)	1,666	1,312	-21.2%	110	2,185	1,927	-11.8%	287	166	107	-35.5%
36	1,876	1,367	-27.1%	112	6,076	5,478	-9.8%	288	460		
37	2,515	2,318	-7.8%	113	716	375	-47.6%	295	45		
38	5,219	3,702	-29.1%	115 (*)	214	163	-23.8%	296	49		
39 (*)	150	102	-32.0%	119	8,303	7,137	-14.0%	297	833	635	-23.8%
40	1,301	906	-30.4%	120	6,031	4,111	-31.8%	301 (*)	789	848	7.5%
42	633	582	-8.1%	132	7	39	457.1%	302 (*)	98	74	-24.5%
46 (*)	20	9	-55.0%	135 (*)	840	714	-15.0%	344 (*)	25	53	112.0%
51	2,192	1,796	-18.1%	136	128	30	-76.6%	500	26	43	65.4%
52	849	766	-9.8%	137	1,254	754	-39.9%				
54	1,916	1,688	-11.9%	150 (*)	1,693	1,056	-37.6%				
56 (*)	242	132	-45.5%	155 (*)	42	32	-23.8%				
<b>Total (1)</b>									<b>122,916</b>	<b>96,934</b>	<b>-21.1%</b>

(\*) Routes currently under contracted operation

(1) Excludes lifeline shuttles; some routes were not run both years on Dr. Martin Luther King, Jr.'s Birthday

## BUS RIDERSHIP BY ROUTE SERVICE TYPE

Boardings by Service Type and Route	Average Weekday	Average Weekday	Percent Change	Average Saturday	Average Saturday	Percent Change	Average Sunday	Average Sunday	Percent Change	Total Monthly	Total Monthly	Percent Change
	Jan-21	Jan-20	21 vs 20	Jan-21	Jan-20	21 vs 20	Jan-21	Jan-20	21 vs 20	Jan-21	Jan-20	21 vs 20
<b>Express Routes</b>												
34 EXPRESS (*)	807	1,845	-56.3%							16,137	40,595	-60.2%
39 EXPRESS (*)	204	883	-76.9%							4,077	19,428	-79.0%
95-EXPRESS (*)	376	1,742	-78.4%							7,527	38,318	-80.4%
150-MIAMI BEACH AIRPORT FLYER (*)	1,089	1,732	-37.1%	1,067	1,695	-37.1%	1,127	1,618	-30.4%	33,878	52,978	-36.1%
175 - NW MIAMI-DADE EXPRESS		28									614	
195 EXPRESS - BROWARD BLVD		388									8,535	
196 EXPRESS - SHERIDAN ST		360									7,928	
295 EXPRESS - BROWARD BLVD - CIVIC CENTER		209									4,588	
296 EXPRESS - SHERIDAN ST - CIVIC CENTER		222									4,891	
204 KAT-KILLIAN		942									20,714	
288 KENDALL CRUISER		753									16,569	
338 - WEEKEND EXPRESS				148	237	-37.3%	112	203	-44.9%	1,116	1,961	-43.1%
836 EXPRESS												
<b>Subtotal Express Routes</b>	<b>2,476</b>	<b>9,104</b>	<b>-72.8%</b>	<b>1,215</b>	<b>1,932</b>	<b>-37.1%</b>	<b>1,239</b>	<b>1,821</b>	<b>-32.0%</b>	<b>62,735</b>	<b>217,119</b>	<b>-71.1%</b>
<b>Percentage of All Bus Routes</b>	<b>2.1%</b>	<b>5.6%</b>		<b>1.5%</b>	<b>2.0%</b>		<b>2.1%</b>	<b>2.5%</b>		<b>2.0%</b>	<b>5.0%</b>	
<b>Contracted Regular &amp; Circulator Routes</b>												
1	174	183	-5.1%	213	244	-12.8%	154	179	-14.1%	5,464	5,899	-7.4%
29	352	566	-37.7%							7,044	12,443	-43.4%
35	1,715	2,413	-28.9%	1,135	1,143	-0.7%	896	895	0.1%	45,348	62,130	-27.0%
46 - LIBERTY CITY CONN.	24	34	-28.7%							480	741	-35.2%
56	168	349	-51.8%							3,363	7,673	-56.2%
57	253	384	-33.9%							5,069	8,441	-39.9%
71	362	656	-44.8%	195	297	-34.3%	162	138	17.1%	9,190	16,316	-43.7%
72	378	733	-48.4%	265	400	-33.7%	206	271	-24.0%	10,122	19,078	-46.9%
82 - WESTCHESTER CIRC	26	55	-53.2%	44	60					738	1,456	-49.3%
101 - A	104	165	-37.0%	52	76	-31.1%	34	55	-39.0%	2,538	4,200	-39.6%
115	194	167	16.7%	171	106	61.3%	169	73	131.7%	5,758	4,455	29.2%
135	777	1,331	-41.6%	325	509		245	333		18,642	32,985	-43.5%
155 - BISCAYNE GARDENS CIRC	34	42	-20.3%							676	933	-27.5%
202 - LITTLE HAITI CONN.	127	132	-3.8%	110	53	107.2%	103	47	118.1%	3,702	3,349	10.5%
210 - SKY LAKE CIRC	304	275	10.5%	165	92	80.3%	122	169	-28.3%	7,633	7,265	5.1%
211-OVERTOWN CIRC	52	59	-12.0%							1,042	1,303	-20.0%
212-SWEETWATER CIRC	10	13	-23.5%							194	279	-30.5%
217 - BUNCHE PARK CIRC	65	88	-25.4%							1,309	1,929	-32.1%
248 - PRINCETON CIRCULATOR	69	128	-46.3%							1,375	2,815	-51.2%
254-BROWNSVILLE CIRC	14	17	-18.8%							282	382	-26.2%
267-LUDLAM LIMITED	88	136	-35.0%							1,768	2,992	-40.9%
272 KAT-SUNSET	239	508	-52.9%							4,780	11,168	-57.2%
286-NORTH POINTE CIRC	33	102	-68.0%	32	49	-34.4%				814	2,444	-66.7%
344	74	96	-23.1%							1,474	2,108	-30.1%
<b>Subtotal Contracted Reg. &amp; Circ. Routes</b>	<b>5,636</b>	<b>8,630</b>	<b>-34.7%</b>	<b>2,709</b>	<b>3,028</b>	<b>-10.5%</b>	<b>2,089</b>	<b>2,161</b>	<b>-3.3%</b>	<b>138,805</b>	<b>212,784</b>	<b>-34.8%</b>
<b>Percentage of All Bus Routes</b>	<b>4.8%</b>	<b>5.3%</b>		<b>3.4%</b>	<b>3.1%</b>		<b>3.6%</b>	<b>3.0%</b>		<b>4.5%</b>	<b>4.9%</b>	

## BUS RIDERSHIP BY ROUTE SERVICE TYPE

Boardings by Service Type and Route	Average Weekday	Average Weekday	Percent Change	Average Saturday	Average Saturday	Percent Change	Average Sunday	Average Sunday	Percent Change	Total Monthly	Total Monthly	Percent Change
	Jan-21	Jan-20	21 vs 20	Jan-21	Jan-20	21 vs 20	Jan-21	Jan-20	21 vs 20	Jan-21	Jan-20	21 vs 20
<b>Contracted Express Routes</b>												
301-DADE MONROE EXPRESS	848	856	-0.9%	897	879	2.1%	846	803	5.4%	26,527	26,367	0.6%
302-CARD SOUND EXPRESS	77	86	-10.2%	72	60	20.3%	45	69	-34.7%	2,180	2,482	-12.2%
<b>Subtotal Contracted Express Routes</b>	<b>926</b>	<b>942</b>	<b>-1.8%</b>	<b>970</b>	<b>939</b>	<b>3.3%</b>	<b>891</b>	<b>872</b>	<b>2.2%</b>	<b>28,707</b>	<b>28,849</b>	<b>-0.5%</b>
<b>Percentage of All Bus Routes</b>	<b>0.8%</b>	<b>0.6%</b>		<b>1.2%</b>	<b>1.0%</b>		<b>1.5%</b>	<b>1.2%</b>		<b>0.9%</b>	<b>0.7%</b>	
<b>Limited Stop Routes</b>												
51-FLAGLER MAX	2,222	3,050	-27.2%							44,439	67,107	-33.8%
93 - BISCAYNE MAX	1,561	3,220	-51.5%							31,222	70,834	-55.9%
120 - BEACH MAX	4,529	6,664	-32.0%	3,389	5,192	-34.7%	2,265	3,508	-35.4%	121,111	184,908	-34.5%
252-CORAL REEF MAX	449	830	-45.9%	241	328	-26.5%	178	214	-17.1%	11,254	20,644	-45.5%
277-7TH AVENUE MAX	484	640	-24.5%							9,670	14,082	-31.3%
287-SAGA BAY MAX	156	345	-54.8%							3,119	7,597	-58.9%
297-27th AVENUE ORANGE MAX	788	1,346	-41.5%							15,759	29,610	-46.8%
<b>Subtotal Limited Stop (MAX) Routes</b>	<b>10,188</b>	<b>16,095</b>	<b>-36.7%</b>	<b>3,630</b>	<b>5,520</b>	<b>-34.2%</b>	<b>2,443</b>	<b>3,722</b>	<b>-34.4%</b>	<b>236,574</b>	<b>394,782</b>	<b>-40.1%</b>
<b>Percentage of All Bus Routes</b>	<b>8.7%</b>	<b>9.9%</b>		<b>4.6%</b>	<b>5.6%</b>		<b>4.2%</b>	<b>5.1%</b>		<b>7.7%</b>	<b>9.1%</b>	
<b>Free Route</b>												
132 -TRI-RAIL DORAL	30	1	2502.9%							562	25	2148.0%
<b>Percentage of All Bus Routes</b>	<b>0.0%</b>	<b>0.0%</b>								<b>0.0%</b>	<b>0.0%</b>	
<b>Shuttles</b>												
55-MARLINS SHUTTLE												
<b>Percentage of All Bus Routes</b>												
<b>Contractor-Operated Lifeline Routes</b>												
GREEN HILLS SHUTTLE	5	5	0.0%							21	21	0.0%
KINGS CREEK SHUTTLE	6	30	-79.9%							24	149	-83.9%
SIERRA LAKES SHUTTLE	17	19	-14.1%							66	96	-31.3%
ROBERT SHARP SHUTTLE	20	5	276.2%							79	21	276.2%
AHEPA SHUTTLE	25	20	21.3%							98	101	-3.0%
FEDERATION GARDENS SHUTTLE				16	29	-43.4%				82	87	-5.7%
<b>Subtotal Contractor-Operated Lifeline Routes</b>	<b>72</b>	<b>80</b>	<b>-9.7%</b>	<b>16</b>	<b>29</b>	<b>-43.4%</b>				<b>370</b>	<b>475</b>	<b>-22.1%</b>
<b>Percentage of All Bus Routes</b>	<b>0.1%</b>	<b>0.0%</b>		<b>0.0%</b>	<b>0.0%</b>		<b>0.0%</b>	<b>0.0%</b>		<b>0.0%</b>	<b>0.0%</b>	
<b>Other Circulator Route</b>												
200-CUTLER BAY LOCAL	121	157	-22.8%	107	145	-26.2%	53	57		3,268	4,310	-24.2%
<b>Percentage of All Bus Routes</b>	<b>0.1%</b>	<b>0.1%</b>		<b>0.1%</b>	<b>0.1%</b>		<b>0.1%</b>	<b>0.1%</b>		<b>0.1%</b>	<b>0.1%</b>	
<b>All Other (Regular) Routes</b>	<b>97,674</b>	<b>126,882</b>	<b>-23.0%</b>	<b>70,233</b>	<b>86,872</b>	<b>-19.2%</b>	<b>51,180</b>	<b>63,952</b>	<b>-20.0%</b>	<b>2,611,725</b>	<b>3,458,654</b>	<b>-24.5%</b>
<b>Percentage of All Bus Routes</b>	<b>83.4%</b>	<b>78.4%</b>		<b>89.0%</b>	<b>88.2%</b>		<b>88.4%</b>	<b>88.1%</b>		<b>84.7%</b>	<b>80.1%</b>	
<b>Total Bus System (1)</b>	<b>117,123</b>	<b>161,892</b>	<b>-27.7%</b>	<b>78,880</b>	<b>98,464</b>	<b>-19.9%</b>	<b>57,894</b>	<b>72,585</b>	<b>-20.2%</b>	<b>3,082,746</b>	<b>4,316,998</b>	<b>-28.6%</b>

(1) Includes shuttles and routes which were not run both years.

(2) Nearly every bus route experienced year-over-year losses as a result of the SARS-CoV-2 pandemic; rides were fare-free beginning March 22, 2020.

(\*) The following routes are entirely operated under contract: 1, 29, 34, 35, 39, 46, 56, 57, 71, 72, 82, 95, 101-A, 115, 135, 150, 155, 202, 210, 211, 212, 217, 248, 254, 267, 272, 286, 301, 302 and 344, although some supplemental runs may be performed by DTPW. Conversely, a few routes that are nominally run by DTPW may have a few supplemental runs operated by contractors; Dade-Monroe routes 301 and 302 as well as six Lifeline routes are also under contracted operation.

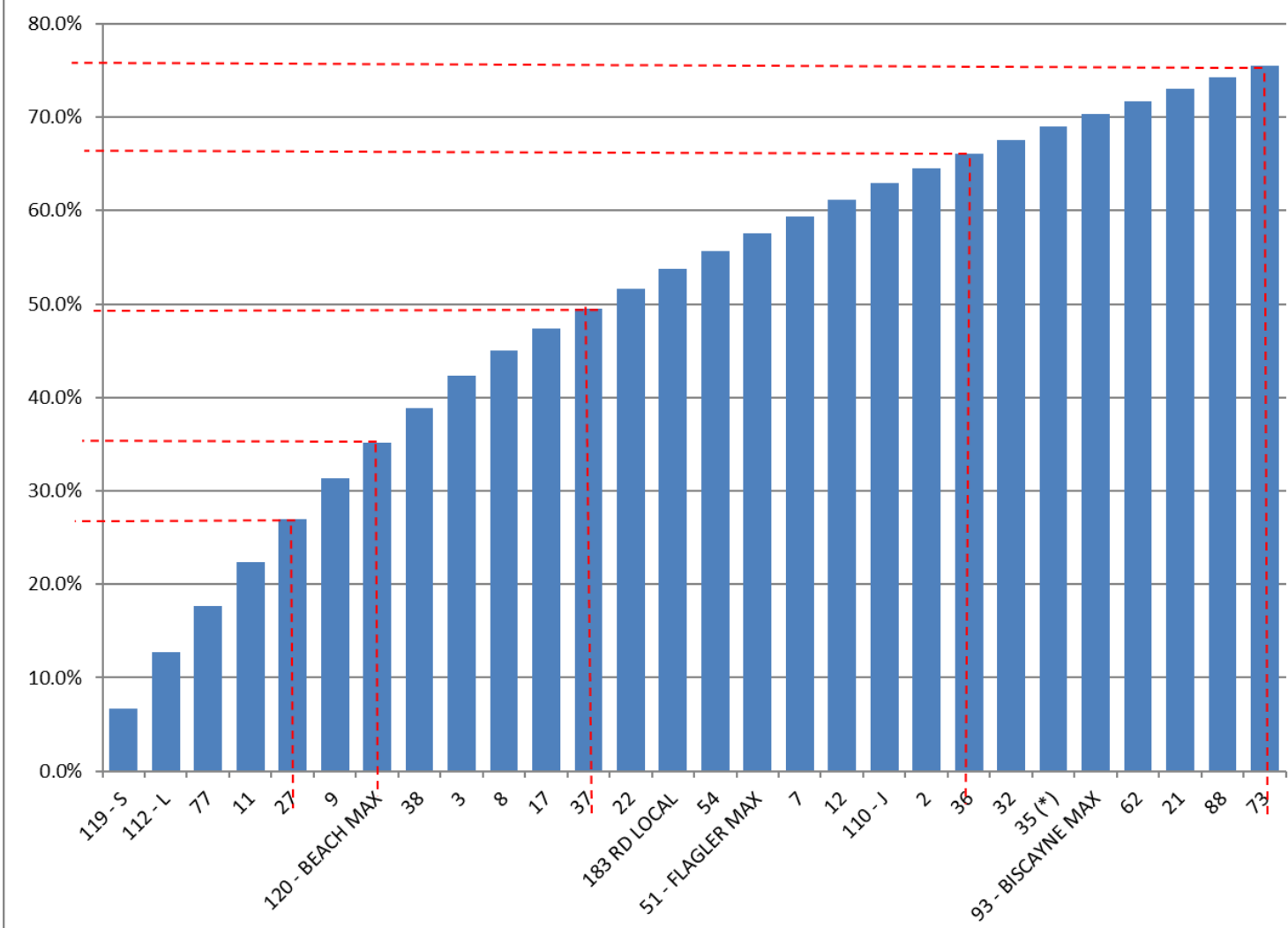
Several express routes were suspended at the end of March or the beginning of April 2020, due to the SARS-CoV-2 pandemic, while other routes had alignment and schedule modifications made to them, in an ongoing effort to optimize service delivery.

## Bus Routes as Ranked by Percentage of Average Weekday Ridership

Rank	Route	Average Weekday	Percent Share	Cumul Pct Share	Rank	Route	Average Weekday	Percent Share	Cumul Pct Share	Rank	Route	Average Weekday	Percent Share	Cumul Pct Share	
1	119	7,825	6.7%	6.7%	36	33	1,034	0.9%	83.5%	71	202	127	0.1%	99.1%	
2	112	7,041	6.0%	12.7%	37	99	1,022	0.9%	84.4%	72	200	121	0.1%	99.2%	
3	77	5,842	5.0%	17.7%	38	137	1,018	0.9%	85.2%	73	101	104	0.1%	99.3%	
4	11	5,531	4.7%	22.4%	39	105	989	0.8%	86.1%	74	267	88	0.1%	99.4%	
5	27	5,346	4.6%	27.0%	40	19	975	0.8%	86.9%	75	302	77	0.1%	99.4%	
6	9	5,112	4.4%	31.3%	41	107	926	0.8%	87.7%	76	246	77	0.1%	99.5%	
7	120	4,529	3.9%	35.2%	42	52	873	0.7%	88.5%	77	344	74	0.1%	99.5%	
8	38	4,242	3.6%	38.8%	43	301	848	0.7%	89.2%	78	248	69	0.1%	99.6%	
9	3	4,058	3.5%	42.3%	44	34	807	0.7%	89.9%	79	217	65	0.1%	99.7%	
10	8	3,183	2.7%	45.0%	45	297	788	0.7%	90.5%	80	500	55	0.0%	99.7%	
11	17	2,751	2.3%	47.4%	46	135	777	0.7%	91.2%	81	211	52	0.0%	99.8%	
12	37	2,535	2.2%	49.5%	47	208	752	0.6%	91.9%	82	136	45	0.0%	99.8%	
13	22	2,501	2.1%	51.7%	48	207	664	0.6%	92.4%	83	155	34	0.0%	99.8%	
14	183	2,406	2.1%	53.7%	49	102	644	0.5%	93.0%	84	286	33	0.0%	99.9%	
15	54	2,263	1.9%	55.6%	50	42	618	0.5%	93.5%	85	132	30	0.0%	99.9%	
16	51	2,222	1.9%	57.5%	51	31	591	0.5%	94.0%	86	82	26	0.0%	99.9%	
17	7	2,156	1.8%	59.4%	52	277	484	0.4%	94.4%	87	AS	25	0.0%	99.9%	
18	12	2,132	1.8%	61.2%	53	252	449	0.4%	94.8%	88	46	24	0.0%	99.9%	
19	110	1,991	1.7%	62.9%	54	113	443	0.4%	95.2%	89	RS	20	0.0%	100.0%	
20	2	1,879	1.6%	64.5%	55	108	384	0.3%	95.5%	90	SL	17	0.0%	100.0%	
21	36	1,875	1.6%	66.1%	56	72	378	0.3%	95.8%	91	254	14	0.0%	100.0%	
22	32	1,738	1.5%	67.6%	57	95	376	0.3%	96.1%	92	212	10	0.0%	100.0%	
23	35	1,715	1.5%	69.0%	58	71	362	0.3%	96.5%	93	KC	6	0.0%	100.0%	
24	93	1,561	1.3%	70.4%	59	29	352	0.3%	96.8%	94	GH	5	0.0%	100.0%	
25	62	1,544	1.3%	71.7%	60	104	317	0.3%	97.0%						
26	21	1,518	1.3%	73.0%	61	103	312	0.3%	97.3%						
27	88	1,438	1.2%	74.2%	62	210	304	0.3%	97.6%						
28	73	1,427	1.2%	75.4%	63	238	281	0.2%	97.8%						
29	10	1,408	1.2%	76.6%	64	57	253	0.2%	98.0%						
30	24	1,289	1.1%	77.7%	65	272	239	0.2%	98.2%						
31	16	1,272	1.1%	78.8%	66	39	204	0.2%	98.4%						
32	40	1,135	1.0%	79.8%	67	115	194	0.2%	98.6%						
33	75	1,115	1.0%	80.8%	68	1	174	0.1%	98.7%						
34	87	1,103	0.9%	81.7%	69	56	168	0.1%	98.8%						
35	150	1,089	0.9%	82.6%	70	287	156	0.1%	99.0%						
												<b>Total Boardings</b>	<b>117,123</b>	<b>100.0%</b>	contracted

- (1) Average weekday ridership rounded to the nearest unit.  
(2) Includes the five Lifeline Shuttles that operate on weekdays: Ahepa, Green Hills, Kings Creek, Robert Sharp and Sierra Lakes.

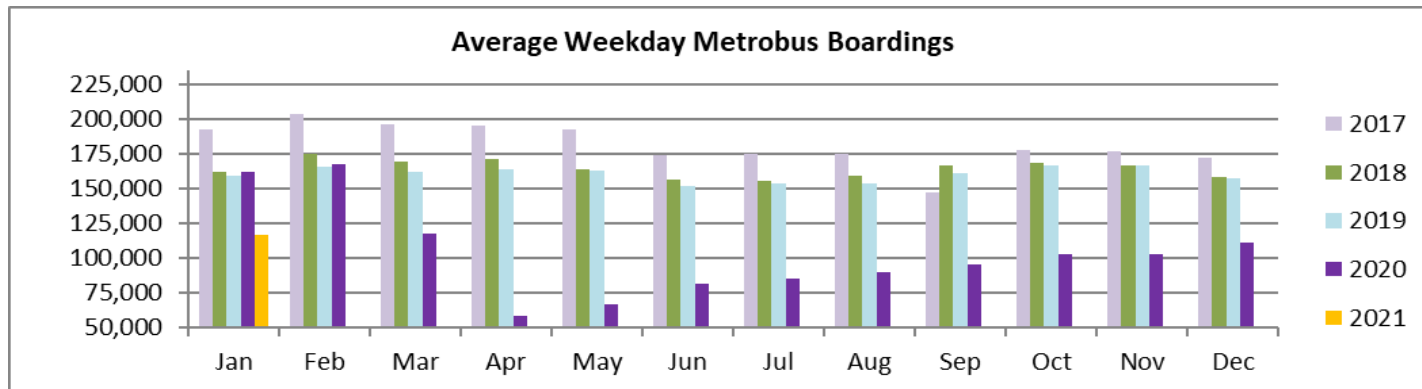
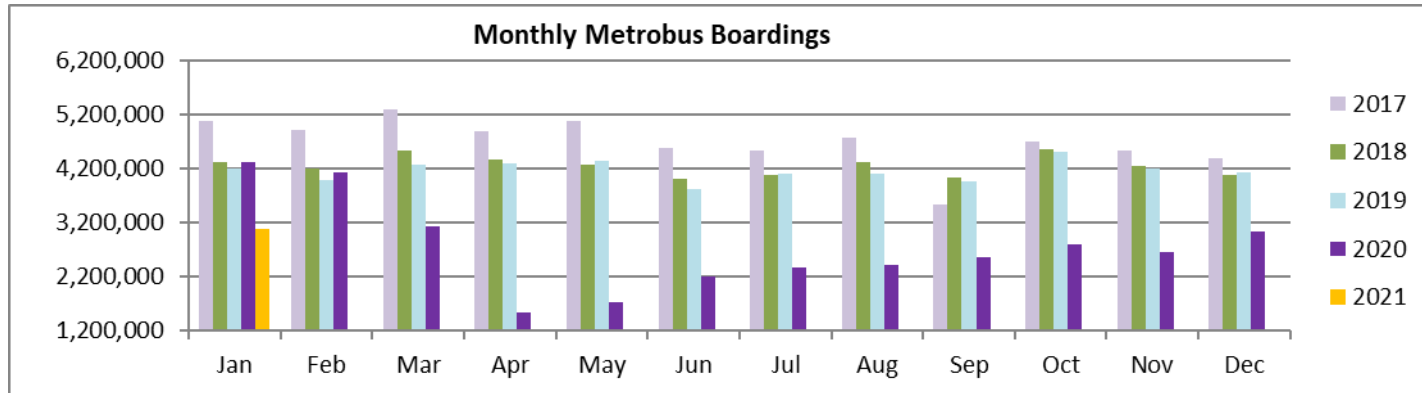
**Bus - Cumulative Percentage Average Weekday Ridership Share  
Top 1/4, 1/3, 1/2, 2/3 and 3/4 of Routes**



(\*) Route entirely run entirely by contractor



## TOTAL MONTHLY AND AVERAGE WEEKDAY RIDERSHIP YEAR OVER YEAR COMPARISON CHARTS – METROBUS



**“TOP 5 / BOTTOM 5” BUS ROUTES AVERAGE WEEKDAY RIDERSHIP PERFORMANCE  
YEAR OVER YEAR COMPARISONS**

<b>Route</b>	<b>Jan-21</b>	<b>Jan-20</b>	<b>Absolute Delta (1)</b>	<b>Percent Delta (2)</b>
<b>210 - SKYLAKE CIRC (*)</b>	304	275	29	10.5%
<b>132 TRI-RAIL (DORAL)</b>	30	1	28	2502.9%
<b>115 (*)</b>	194	167	28	16.7%
<b>500</b>	55	39	16	42.2%
<b>212 - SWEETWATER CIRC. (*)</b>	10	13	-3	-23.5%
<b>38</b>	4,242	6,468	-2,226	-34.4%
<b>120 - BEACH MAX</b>	4,529	6,664	-2,135	-32.0%
<b>93 - BISCAYNE MAX</b>	1,561	3,220	-1,659	-51.5%
<b>95 EXPRESS (*)</b>	376	1,742	-1,365	-78.4%
<b>11</b>	5,531	6,882	-1,351	-19.6%

(\*) Route entirely run by contractor.

(1) Averages rounded to the nearest boarding, data as reported by APC system or contractor, depending on route; Lifelines excluded.

(2) As a result of the SARS-CoV-2 pandemic, rides were fare-free beginning March 22, 2020.

## METROBUS PARKING PATRONAGE SUMMARY January 2021

PARK-RIDE LOT	ACTUAL AVAILABLE SPACES	ACTUAL OCCUPANCY	PERCENT OCCUPANCY
Transitway / SW 152nd St	200	54	27%
Transitway / SW 168th St	149	39	26%
Transitway / SW 200th Street (effective February 2020)	100	30	30%
Transitway / SW 112 Ave (Target)	450	55	12%
Transitway / SW 244th St	95	19	20%
Transitway / SW 296th St	139	38	27%
Transitway / SW 344th St	248	115	46%
Coral Reef Drive 117/Turnpike	95	45	47%
Golden Glades - East Lot	535	129	24%
Golden Glades - West Lot	1,007	55	5%
Hammocks Town Center (SW 152 Ave / SW 104 St)	50	0	0%
Kendall Dr./SW 127th Ave	161	8	5%
West Kendall Transit Term (Kendall Dr / SW162 Ave)	40	2	5%
NW 7th Avenue Transit Village (NW 7 Ave / NW 62 St)	25	18	72%
Miami Gardens Dr. / NW 73rd Ave	136	0	0%
Dolphin Station (effective Mar 2020)	348	1	0%
I-75 / Miami Gardens Dr (effective June 2019)	298	0	0%
<b>TOTAL</b>	<b>4,076</b>	<b>608</b>	<b>15%</b>

*Note: some park-ride lots are joint-use and the number of park-ride vehicles may exceed the number of spaces allocated.*

# Metrorail



## METRORAIL MONTHLY AND AVERAGE DAILY BOARDINGS BY STATION

	Average Weekday	Average Weekday	Percent Change	Average Saturday	Average Saturday	Percent Change	Average Sunday	Average Sunday	Percent Change	Total Monthly	Total Monthly	Percent Change
STATIONS	Jan-21	Jan-20	21 vs 20	Jan-21	Jan-20	21 vs 20	Jan-21	Jan-20	21 vs 20	Jan-21	Jan-20	21 vs 20
ALLAPATTAH	1,261	1,905	-33.8%	799	1,034	-22.7%	612	738	-17.1%	32,643	49,119	-33.5%
BRICKELL	3,699	6,245	-40.8%	2,284	2,677	-14.7%	1,831	2,076	-11.8%	95,706	155,872	-38.6%
BROWNSVILLE	710	851	-16.6%	499	532	-6.2%	394	392	0.5%	18,992	22,905	-17.1%
CIVIC CENTER	2,713	5,945	-54.4%	641	918	-30.2%	618	690	-10.3%	59,442	133,416	-55.4%
COCONUT GROVE	989	1,689	-41.4%	611	843	-27.6%	472	672	-29.7%	25,392	43,211	-41.2%
CULMER	870	1,340	-35.1%	548	727	-24.7%	439	585	-25.0%	22,528	34,802	-35.3%
DADELAND NORTH	3,142	5,748	-45.3%	1,587	1,883	-15.7%	1,193	1,453	-17.9%	76,348	137,680	-44.5%
DADELAND SOUTH	3,089	6,873	-55.0%	1,928	2,570	-25.0%	1,517	1,996	-24.0%	79,877	167,844	-52.4%
DOUGLAS ROAD	1,511	3,483	-56.6%	799	1,331	-40.0%	515	952	-45.9%	37,122	85,185	-56.4%
DR. MARTIN LUTHER KING, JR.	804	1,148	-30.0%	519	627	-17.2%	313	441	-29.2%	19,527	29,720	-34.3%
EARLINGTON HEIGHTS	1,000	1,586	-37.0%	665	902	-26.3%	522	730	-28.5%	26,256	41,558	-36.8%
GOVERNMENT CENTER	3,435	9,560	-64.1%	2,084	3,571	-41.6%	1,568	2,816	-44.3%	87,794	233,579	-62.4%
HIALEAH	710	1,230	-42.3%	397	614	-35.4%	307	466	-34.0%	17,850	31,416	-43.2%
MIAMI INTERNATIONAL AIRPORT	686	1,678	-59.1%	636	1,316	-51.7%	603	1,302	-53.7%	20,672	48,780	-57.6%
NORTHSIDE	1,064	1,401	-24.1%	840	900	-6.6%	620	655	-5.2%	29,033	37,168	-21.9%
OKEECHOBEE	656	1,133	-42.1%	328	382	-14.0%	223	261	-14.5%	15,930	27,238	-41.5%
OVERTOWN / ARENA	702	2,205	-68.1%	422	572	-26.1%	377	486	-22.5%	18,283	51,765	-64.7%
PALMETTO	773	1,494	-48.3%	302	422	-28.4%	198	266	-25.3%	17,999	35,141	-48.8%
SANTA CLARA	495	780	-36.5%	305	382	-20.2%	209	241	-13.1%	12,591	19,692	-36.1%
SOUTH MIAMI	1,298	2,896	-55.2%	642	1,155	-44.4%	448	824	-45.6%	31,809	71,052	-55.2%
TRI-RAIL	768	1,184	-35.1%	438	554	-21.0%	361	527	-31.5%	19,577	30,432	-35.7%
UNIVERSITY	612	2,370	-74.2%	334	660	-49.4%	257	468	-45.1%	15,153	55,395	-72.6%
VIZCAYA	726	1,336	-45.7%	459	581	-20.9%	336	441	-23.8%	18,595	33,370	-44.3%
<b>TOTAL</b>	<b>31,713</b>	<b>64,081</b>	<b>-50.5%</b>	<b>18,066</b>	<b>25,150</b>	<b>-28.2%</b>	<b>13,933</b>	<b>19,474</b>	<b>-28.5%</b>	<b>799,119</b>	<b>1,576,340</b>	<b>-49.3%</b>

(†) All Metrorail stations reported net YOY losses in average weekday ridership in January 2021, due to effects from the SARS-CoV-2 pandemic; rides were fare-free beginning March 22, 2020.

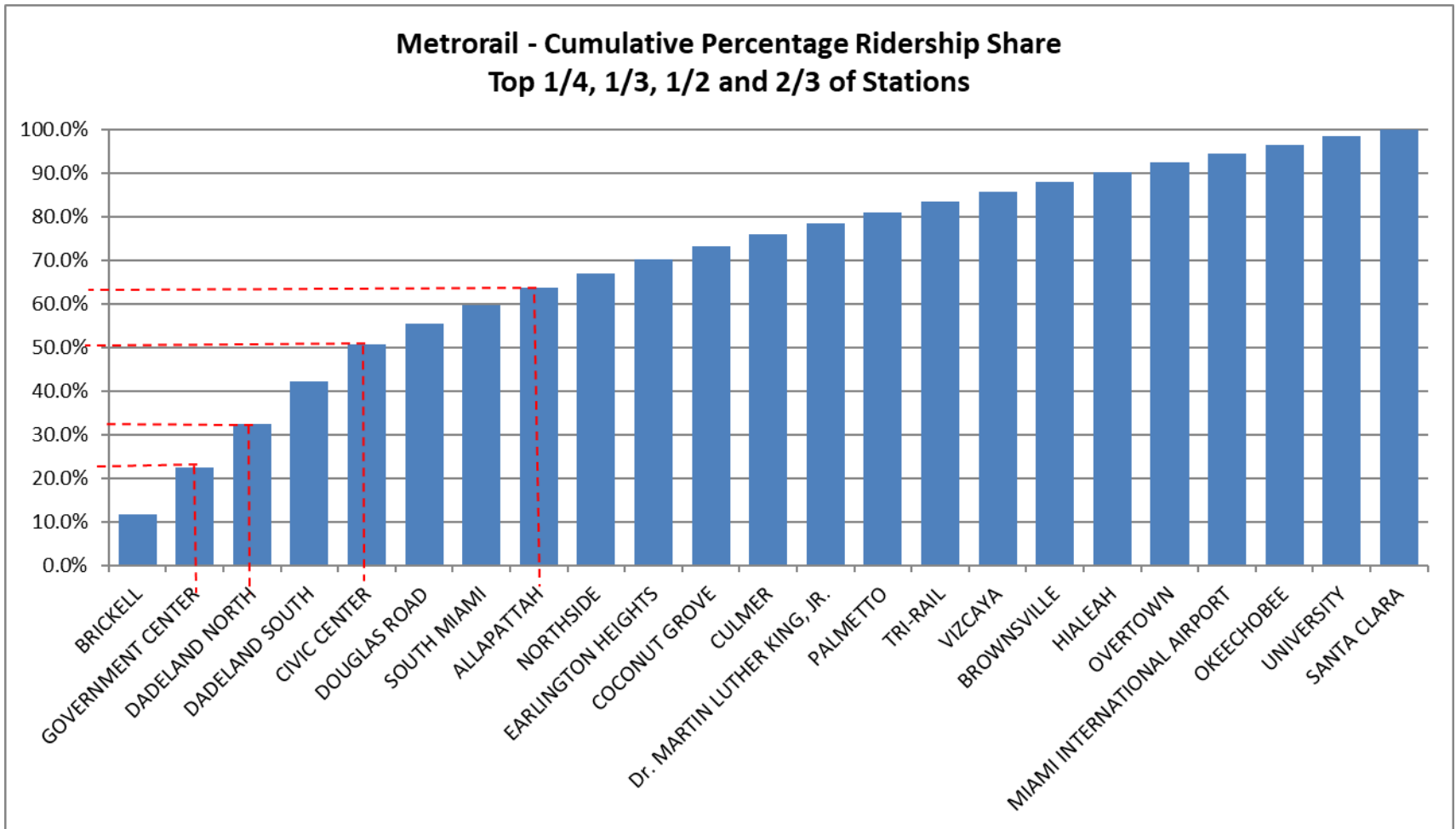
(\*) Dr. Martin Luther King, Jr. station did not report UnleashLive video boardings data for the first two (2) days in January 2021; the average daily ridership calculations take this into account.

## METRORAIL HOLIDAY BOARDINGS BY STATION

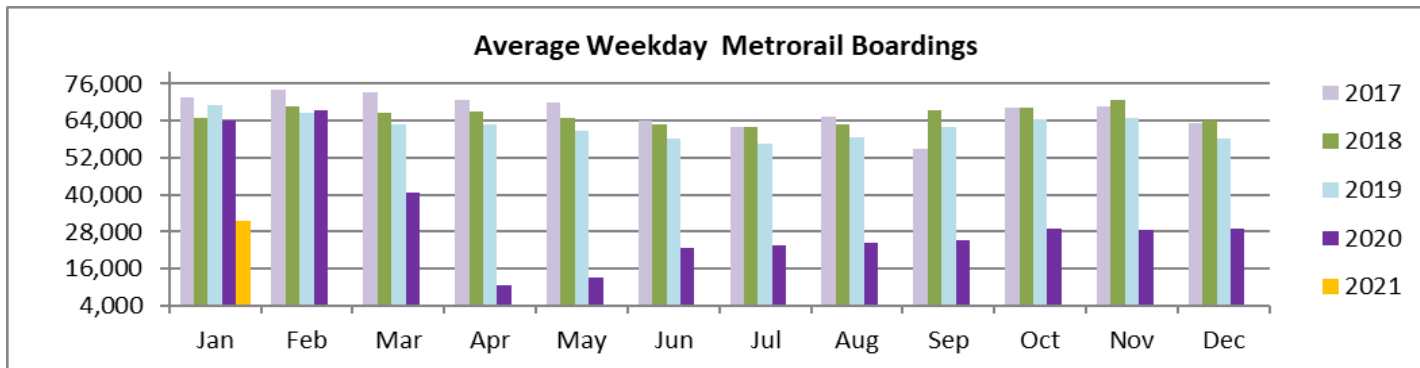
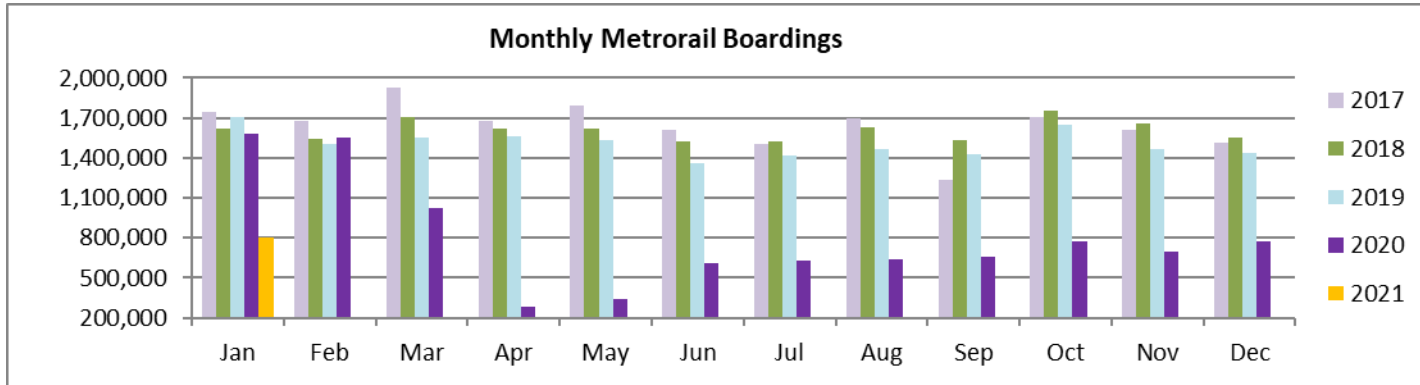
	New Year's Day	New Year's Day	Percent Change	Dr. MLK, Jr. Birthday	Dr. MLK, Jr. Birthday	Percent Change
STATIONS	2020	2021	21 vs 20	2020	2021	21 vs 20
ALLAPATTAH	672	640	-4.8%	1,352	996	-26.3%
BRICKELL	1,914	1,749	-8.6%	3,815	3,104	-18.6%
BROWNSVILLE	398	456	14.6%	933	585	-37.3%
CIVIC CENTER	660	524	-20.6%	1,478	1,072	-27.5%
COCONUT GROVE	522	397	-23.9%	1,155	787	-31.9%
CULMER	514	448	-12.8%	905	627	-30.7%
DADELAND NORTH	994	718	-27.8%	2,637	2,032	-22.9%
DADELAND SOUTH	1,609	1,400	-13.0%	3,637	2,556	-29.7%
DOUGLAS ROAD	833	800	-4.0%	2,076	1,049	-49.5%
DR. MARTIN LUTHER KING, JR. (*)	436			909	618	-32.0%
EARLINGTON HEIGHTS	680	530	-22.1%	1,054	798	-24.3%
GOVERNMENT CENTER	2,704	1,605	-40.6%	4,572	2,664	-41.7%
HIALEAH	415	282	-32.0%	850	564	-33.6%
MIAMI INTERNATIONAL AIRPORT	1,429	675	-52.8%	1,636	758	-53.7%
NORTHSIDE	501	632	26.1%	1,020	881	-13.6%
OKEECHOBEE	267	237	-11.2%	600	479	-20.2%
OVERTOWN / ARENA	409	374	-8.6%	830	570	-31.3%
PALMETTO	186	182	-2.2%	821	623	-24.1%
SANTA CLARA	273	221	-19.0%	553	386	-30.2%
SOUTH MIAMI	736	652	-11.4%	1,587	1,050	-33.8%
TRI-RAIL	335	287	-14.3%	910	701	-23.0%
UNIVERSITY	217	189	-12.9%	892	378	-57.6%
VIZCAYA	444	274	-38.3%	778	550	-29.3%
<b>TOTAL</b>	<b>17,148</b>	<b>13,272</b>	<b>-22.6%</b>	<b>35,000</b>	<b>23,828</b>	<b>-31.9%</b>

(\*) No Unleash Live video ridership data available at Dr. Martin Luther King, Jr. station on New Year's Day 2021.

# METRORAIL CUMULATIVE PERCENTAGE RIDERSHIP SHARE



## TOTAL MONTHLY AND AVERAGE WEEKDAY RIDERSHIP YEAR OVER YEAR COMPARISON CHARTS – METRORAIL





**“TOP 5 / BOTTOM 5” RAIL STATIONS AVERAGE WEEKDAY RIDERSHIP PERFORMANCE  
YEAR OVER YEAR COMPARISONS**

<b>Station</b>	<b>Jan-21</b>	<b>Jan-20</b>	<b>Absolute Delta (1)</b>	<b>Percent Delta</b>
BROWNSVILLE	710	851	-142	-16.6%
SANTA CLARA	495	780	-284	-36.5%
NORTHSIDE	1,064	1,401	-337	-24.1%
Dr. MARTIN LUTHER KING, JR.	804	1,148	-344	-30.0%
TRI-RAIL	768	1,184	-416	-35.1%
GOVERNMENT CENTER	3,435	9,560	-6,125	-64.1%
DADELAND SOUTH	3,089	6,873	-3,784	-55.0%
CIVIC CENTER	2,713	5,945	-3,232	-54.4%
DADELAND NORTH	3,142	5,748	-2,606	-45.3%
BRICKELL	3,699	6,245	-2,546	-40.8%

(1) Averages rounded to the nearest boarding.

(†) All Metrorail stations reported net losses in January 2021, due to effects on ridership from the SARS-CoV-2 pandemic.

## METRORAIL PARKING PATRONAGE SUMMARY January 2021

PARK-RIDE LOT	ACTUAL CAPACITY (1)	ACTUAL OCCUPANCY (2)	PERCENT OCCUPANCY
DADELAND SOUTH	1,280		
DADELAND NORTH	1,963		
SOUTH MIAMI	1,081		
UNIVERSITY	260		
DOUGLAS ROAD	150		
COCONUT GROVE	100		
VIZCAYA	120		
CULMER	40		
SANTA CLARA	61		
ALLAPATTAH	74		
EARLINGTON HEIGHTS	361		
BROWNSVILLE	100		
DR. MARTIN LUTHER KING JR. (MDT)	62		
DR. MARTIN LUTHER KING JR. (GARAGE)	631		
NORTHSIDE	197		
HIALEAH	338		
OKEECHOBEE	1,398		
PALMETTO	700		
<b>TOTAL</b>	<b>8,916</b>		

- (1) Number of spaces could vary each week; shown are available spaces during final week of month; the capacities shown here date from March 2020.  
(2) Averages rounded to nearest unit; no counts effected in January 2021 due to reassignment of staff as result of SARS-CoV-2 pandemic.

# Metromover



January 2021

## METROMOVER MONTHLY AND AVERAGE DAILY BOARDINGS BY STATION

	Average Weekday	Average Weekday	Percent Change	Average Saturday	Average Saturday	Percent Change	Average Sunday	Average Sunday	Percent Change	Total Monthly	Total Monthly	Percent Change
STATIONS	Jan-21	Jan-20	21 vs 20	Jan-21	Jan-20	21 vs 20	Jan-21	Jan-20	21 vs 20	Jan-21	Jan-20	21 vs 20
School Board	429	883	-51.3%	369	727	-49.2%	321	610	-47.4%	12,388	25,228	-50.9%
Omni	471	1,789	-73.7%	402	1,373	-70.7%	379	1,127	-66.3%	13,802	50,276	-72.5%
Museum Park	95	137	-30.3%	156	117	33.6%	138	78	76.7%	3,482	3,832	-9.1%
Eleventh Street	191	260	-26.5%	129	245	-47.3%	91	202	-54.7%	5,033	7,727	-34.9%
Park West	266	357	-25.5%	206	266	-22.6%	157	215	-27.1%	7,241	9,930	-27.1%
Freedom Tower (1)		463			348			317			13,249	
Government Center	1,164	7,158	-83.7%	962	2,438	-60.5%	783	1,848	-57.6%	30,284	171,403	-82.3%
Miami Avenue	233	454	-48.6%	184	301	-39.0%	175	241	-27.5%	5,849	12,309	-52.5%
Third Street	195	209	-6.4%	142	205	-30.6%	131	135	-3.3%	4,738	6,286	-24.6%
Knight Center	287	1,099	-73.9%	167	457	-63.5%	164	384	-57.4%	7,527	27,350	-72.5%
Bayfront Park	968	3,305	-70.7%	978	2,285	-57.2%	818	2,127	-61.5%	29,184	91,671	-68.2%
First Street	685	1,684	-59.3%	524	1,070	-51.1%	489	952	-48.7%	17,089	45,719	-62.6%
College/Bayside	700	2,184	-67.9%	619	1,439	-57.0%	512	1,477	-65.4%	13,087	60,416	-78.3%
College North	260	993	-73.8%	140	296	-52.6%	120	231	-47.9%	6,529	23,555	-72.3%
Wilkie D. Ferguson	294	726	-59.5%	296	412	-28.3%	246	402	-38.9%	6,363	19,194	-66.8%
Riverwalk	302	860	-64.9%	242	522	-53.7%	215	445	-51.8%	8,570	22,865	-62.5%
Fifth Street	243	547	-55.6%	173	292	-40.6%	137	252	-45.4%	6,503	14,148	-54.0%
Eighth Street	700	2,338	-70.1%	695	1,779	-60.9%	556	1,580	-64.8%	20,864	66,098	-68.4%
Tenth Street	360	800	-55.0%	304	623	-51.2%	256	486	-47.2%	10,243	22,428	-54.3%
Brickell	1,257	4,266	-70.5%	1,057	2,714	-61.1%	903	2,351	-61.6%	35,064	114,729	-69.4%
Financial District	460	1,524	-69.8%	303	756	-59.9%	255	693	-63.1%	12,128	39,359	-69.2%
<b>TOTAL</b>	<b>9,561</b>	<b>32,033</b>	<b>-70.2%</b>	<b>8,047</b>	<b>18,665</b>	<b>-56.9%</b>	<b>6,847</b>	<b>16,151</b>	<b>-57.6%</b>	<b>255,968</b>	<b>847,773</b>	<b>-69.8%</b>

(1) Freedom Tower Station was closed for construction throughout January 2021.

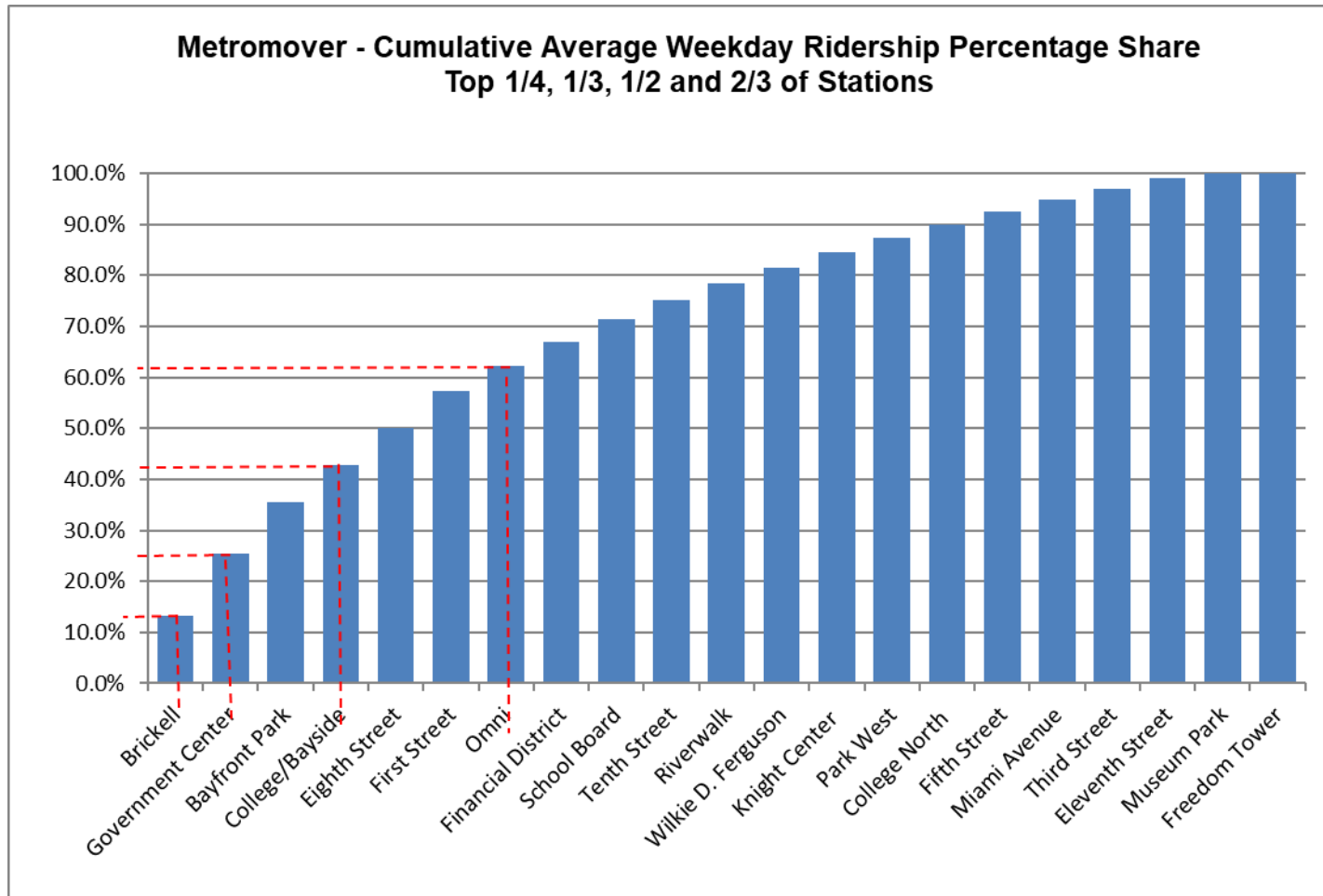
(\*) UTA's APC system did not report boardings data at several stations on several days in January 2021; the average daily ridership calculations take this into account.

## METROMOVER HOLIDAY BOARDINGS BY STATION

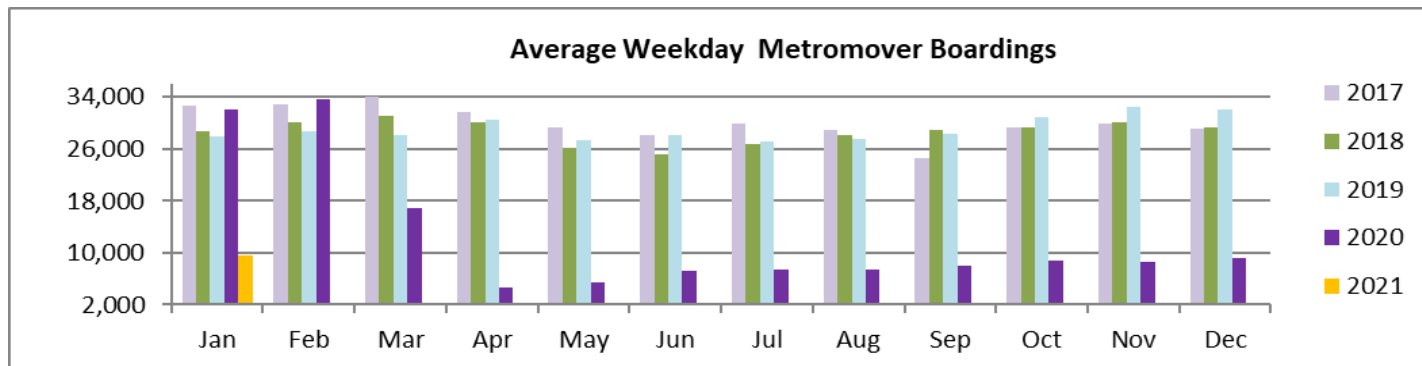
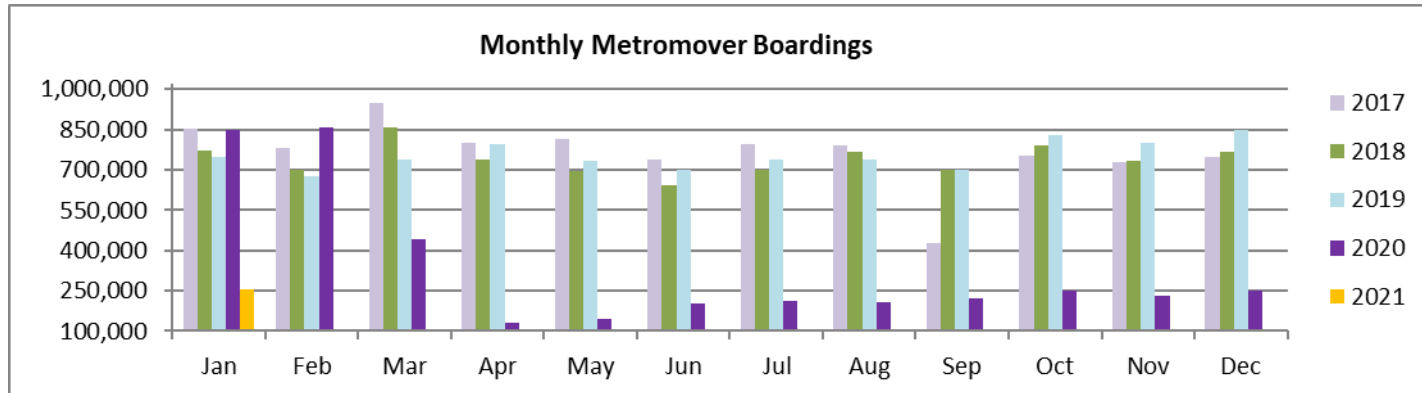
	New Year's Day	New Year's Day	Percent Change	Dr. MLK, Jr. Birthday	Dr. MLK, Jr. Birthday	Percent Change
STATIONS	2020	2021	20 vs 19	2020	2021	20 vs 19
School Board	597	383	-35.8%	748	395	-47.2%
Omni	1,429	521	-63.5%	1,277	423	-66.9%
Museum Park	50	100	100.0%	131	103	-21.4%
Eleventh Street	261	114	-56.3%	224	188	-16.1%
Park West	148	173	16.9%	370	208	-43.8%
Freedom Tower (*)	277			585		
Government Center	1,645	828	-49.7%	2,307	946	-59.0%
Miami Avenue	251	113	-55.0%	365	213	-41.6%
Third Street	247	115	-53.4%	293	209	-28.7%
Knight Center	373	220	-41.0%	526	206	-60.8%
Bayfront Park	2,449	1,084	-55.7%	2,164	722	-66.6%
First Street	986	286	-71.0%	1,275	590	-53.7%
College/Bayside (*)	1,418	589	-58.5%	1,463		
College North	245	125	-49.0%	350	161	-54.0%
Wilkie D. Ferguson (*)	284			417	279	-33.1%
Riverwalk	422	318	-24.6%	526	238	-54.8%
Fifth Street	292	160	-45.2%	203	180	-11.3%
Eighth Street	1,706	601	-64.8%	1,861	706	-62.1%
Tenth Street	592	293	-50.5%	604	305	-49.5%
Brickell	2,251	911	-59.5%	2,637	477	-81.9%
Financial District	626	267	-57.3%	942	319	-66.1%
<b>TOTAL</b>	<b>16,549</b>	<b>7,201</b>	<b>-56.5%</b>	<b>19,268</b>	<b>6,868</b>	<b>-64.4%</b>

(\*) Ridership unavailable at a few stations on holidays; Freedom Tower Station closed for construction throughout January 2021.

# METROMOVER CUMULATIVE PERCENTAGE RIDERSHIP SHARE



## TOTAL MONTHLY AND AVERAGE WEEKDAY RIDERSHIP YEAR OVER YEAR COMPARISON CHARTS – METROMOVER



**“TOP 5 / BOTTOM 5” MOVER STATIONS AVERAGE WEEKDAY RIDERSHIP PERFORMANCE  
YEAR OVER YEAR COMPARISONS**

<b>Station</b>	<b>Jan-21</b>	<b>Jan-20</b>	<b>Absolute Delta (1)</b>	<b>Percent Delta</b>
Government Center	1,164	7,158	-5,994	-83.7%
Brickell	1,257	4,266	-3,009	-70.5%
Bayfront Park	968	3,305	-2,337	-70.7%
Eighth Street	700	2,338	-1,638	-70.1%
College/Bayside	700	2,184	-1,484	-67.9%
Miami Avenue	233	454	-220	-48.6%
Park West	266	357	-91	-25.5%
Eleventh Street	191	260	-69	-26.5%
Museum Park	95	137	-41	-30.3%
Third Street	195	209	-13	-6.4%

(1) Averages rounded to the nearest boarding.

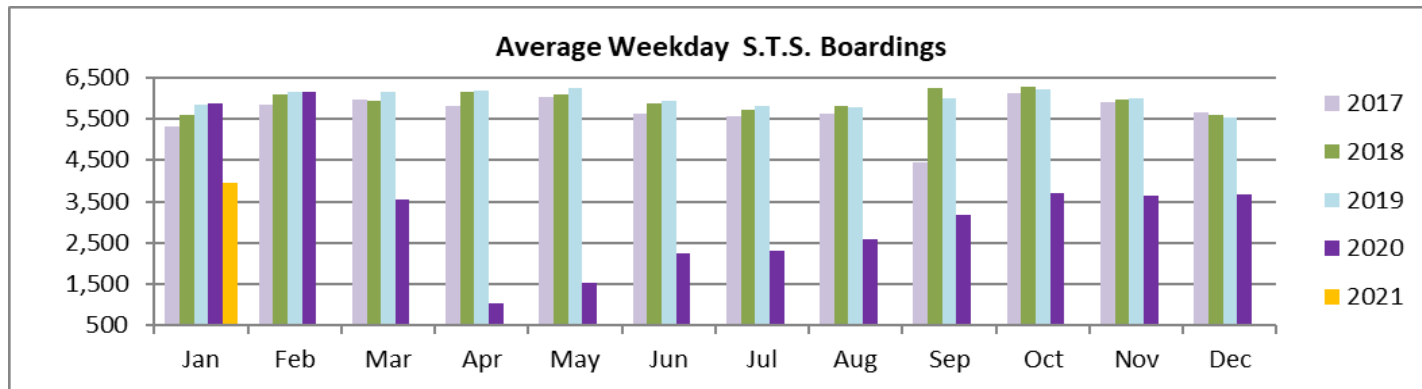
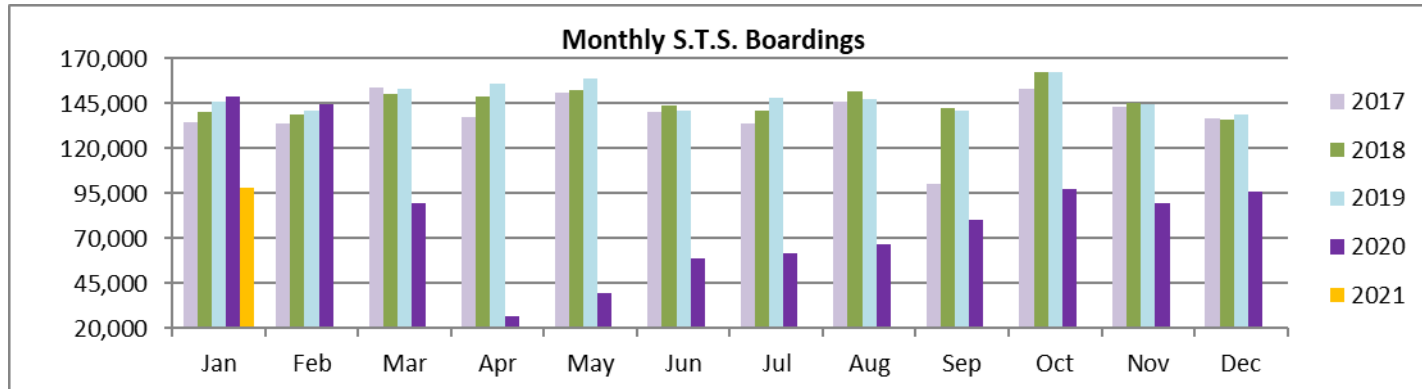
(†) All Metromover stations reported net YOY losses in January 2021, due to effects on ridership from the SARS-CoV-2 pandemic.



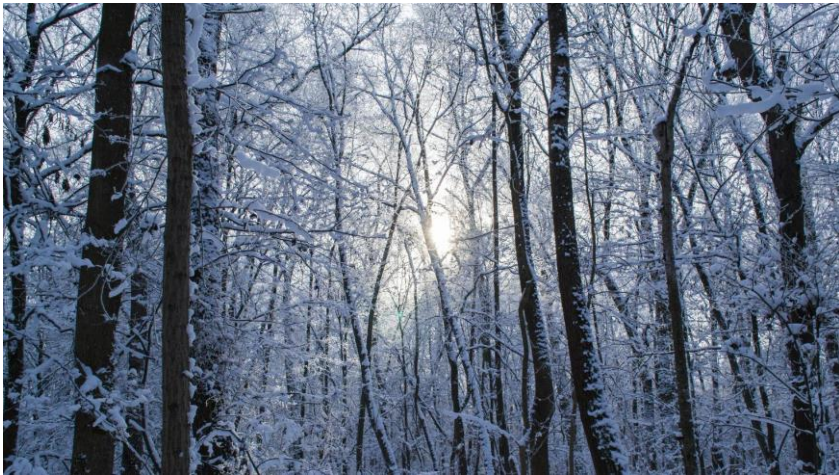
## Special Transportation Services



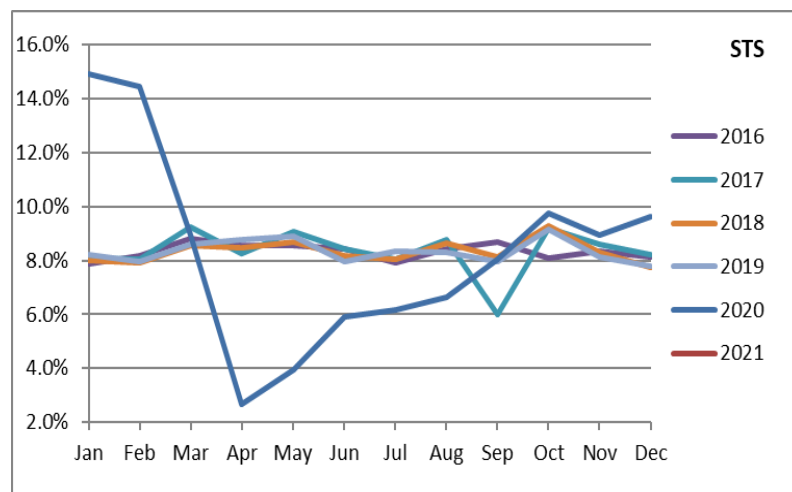
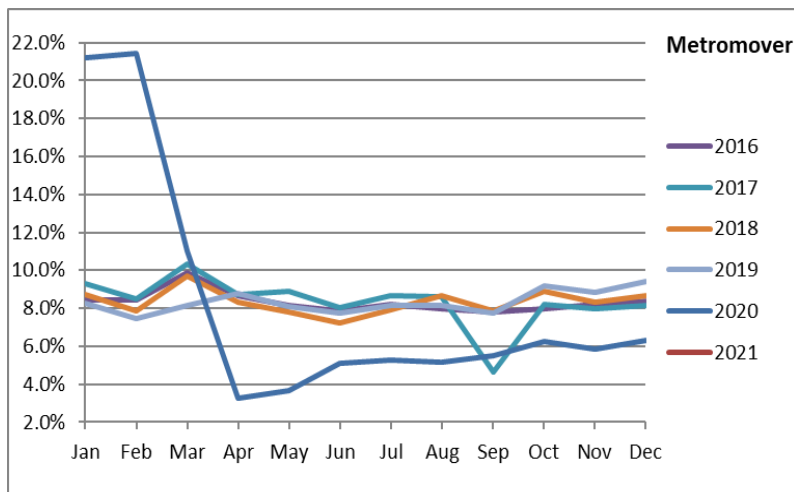
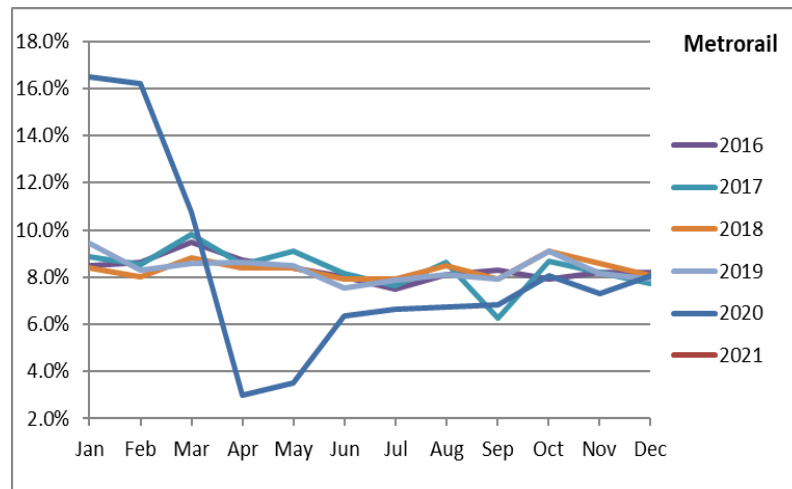
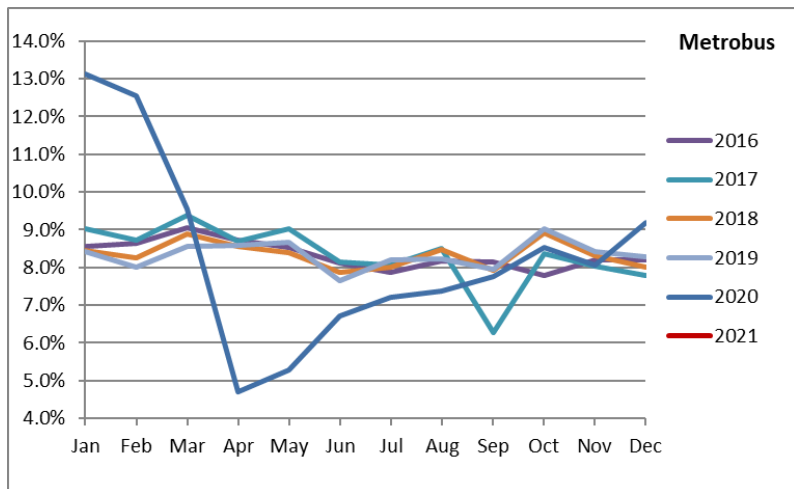
## TOTAL MONTHLY AND AVERAGE WEEKDAY RIDERSHIP YEAR OVER YEAR COMPARISON CHARTS – SPECIAL TRANSPORTATION SERVICES (S.T.S.)



# Ridership Seasonality



# RIDERSHIP SEASONALITY – PERCENT RIDERSHIP SHARE BY MONTH AND CALENDAR YEAR FOR EACH MODE



Note: the prominent dips seen in the fall of 2017 and beginning in the spring of 2020 are due to Hurricane Irma and the ongoing SARS-CoV-2 pandemic, respectively.