



TRANSPORTATION AND PUBLIC WORKS

RIDERSHIP TECHNICAL REPORT

Division of Performance and Materials Management



Table of Contents

<i>Table of Contents</i>	2-3
All Modes Overview	4
Total Monthly Weekday, Saturday and Sunday Monthly Boardings By Mode	5
Average Weekday, Saturday and Sunday Boardings by Mode	6
Metrobus Total Monthly Ridership Comparisons by Fiscal Year	7
Metrorail Total Monthly Ridership Comparisons by Fiscal Year	8
Metromover Total Monthly Ridership Comparisons by Fiscal Year	9
STS Total Monthly Ridership Comparisons by Fiscal Year	10
All-Modes Combined Total Monthly Ridership Comparisons By Fiscal Year	11
All Modes Combined Total Monthly and Average Weekday Ridership – Year over Year Comparison Charts	12
Average Weekday Ridership – Modal Splits	13
Daily Ridership for All Modes Combined since February 1, 2020	14
Metrobus	15
Metrobus Average Weekday Boardings by Route	16-18
Metrobus Average Saturday Boardings by Route	19-20
Metrobus Average Sunday Boardings by Route	21-22
Metrobus Monthly Total Boardings by Route	23-25
Year-over-Year Bus Ridership by Route Service Type	26-27
Bus Routes as Ranked by Percentage of Average Weekday Ridership	28
Metrobus Cumulative Percentage Average Weekday Ridership Share by Route (Top 75%)	29
Total Monthly and Average Weekday Rail Ridership – Year over Year Comparison Charts	30
Bus “Top 5 / Bottom 5” Routes Average Weekday Ridership Performance	31
Daily Metrobus Ridership since February 1, 2020	32
Metrobus Parking Patronage Summary	33

Table of Contents (continued)

Metrorail	34
Metrorail Average Weekday Boardings by Station	35
Metrorail Average Saturday Boardings by Station	36
Metrorail Average Sunday Boardings by Station	37
Metrorail Total Monthly Boardings by Station	38
Metrorail Cumulative Percentage Average Weekday Ridership Share	39
Total Monthly and Average Weekday Rail Ridership – Year over Year Comparison Charts	40
“Top 5 / Bottom 5” Stations Average Weekday Ridership Performance	41
Daily Metrorail Ridership since February 1, 2020	42
Metrorail Parking Patronage Summary	43
Metromover	44
Monthly and Average Daily Mover Boardings by Station	45
Metromover Cumulative Percentage Average Weekday Ridership Share	46
Total Monthly and Average Weekday Mover Ridership – Year over Year Comparison Charts	47
“Top 5 / Bottom 5” Stations Average Weekday Ridership Performance	48
Daily Metromover Ridership since February 1, 2020	49
Special Transportation Services (STS)	50
STS Monthly and Average Daily Boardings	51
Total Monthly and Average Weekday STS Ridership – Year over Year Comparison Charts	52
Daily STS Ridership since February 1, 2020	53
Ridership Seasonality	54
Ridership Seasonality – Percent Ridership Share by Month and Calendar year for Each Mode	55

All Modes Overview



TOTAL MONTHLY WEEKDAY, SATURDAY AND SUNDAY BOARDINGS BY MODE
April 2021

TRAVEL MODE	MONTH'S TOTAL WEEKDAYS RIDERSHIP	MONTH'S TOTAL SATURDAYS RIDERSHIP	MONTH'S TOTAL SUNDAYS RIDERSHIP	TOTAL MONTHLY RIDERSHIP	% CHANGE vs Apr 2020 TOTAL MONTH RIDERSHIP
METROBUS (1)	2,996,583	355,532	272,933	3,625,048	134.7%
METRORAIL (2)	691,174	77,127	59,113	827,414	187.5%
METROMOVER (3)	241,412	37,813	31,547	310,772	138.1%
STS PARATRANSIT (4)	102,525	10,245	7,352	120,122	346.9%
TOTAL	4,031,694	480,717	370,945	4,883,356	145.5%

- (1) As a result of the SARS-CoV-2 pandemic, Metrobus rides became fare-free on March 22, 2020; consequently, NextFare System farebox data was replaced by bus automatic passenger counter data starting on that date.
- (2) As a result of the SARS-CoV-2 pandemic, Metrorail rides became fare-free on March 22, 2020; consequently, NextFare System faregate data was replaced manually-counted data and other estimates starting on that date.
- (3) Beginning March 13, 2020 (day of National Emergency Declaration due to SARS-CoV-2 pandemic), only raw data from Metromover automatic passenger counters is reported; no estimates are performed after March 13, 2020.
- (4) Paratransit ridership data as reported by the contractor.

AVERAGE WEEKDAY, SATURDAY AND SUNDAY BOARDINGS BY MODE
April 2021

Travel Mode	Average Weekday	Average Saturday	Average Sunday	% Change Apr 2020 Weekday	% Change Apr 2020 Saturday	% Change Apr 2020 Sunday
METROBUS	136,282	88,930	68,233	134.6%	121.5%	128.4%
METRORAIL (1)	33,203	19,282	14,778	209.6%	168.7%	155.1%
METROMOVER (1)	11,020	9,586	7,998	136.1%	154.9%	149.1%
STS PARATRANSIT	4,660	2,561	1,838	345.4%	259.6%	630.1%
Totals	185,165	120,359	92,848	148.4%	132.4%	137.3%

(1) Average ridership is calculated and published only for those days and stations with nontrivial amounts of reported data.

METROBUS TOTAL MONTHLY RIDERSHIP COMPARISONS BY FISCAL YEAR

Bus	FY 17	FY 18	Variance 17 to 18	FY 19	Variance 18 to 19	FY 20	Variance 19 to 20	FY 21	Variance 20 to 21	Variance 17 to 21
Oct	4,925,781	4,709,590	-4.4%	4,554,886	-3.3%	4,507,012	-1.1%	2,805,139	-37.8%	-43.1%
Nov	5,181,524	4,522,250	-12.7%	4,245,535	-6.1%	4,197,225	-1.1%	2,651,290	-36.8%	-48.8%
Dec	5,192,692	4,380,099	-15.6%	4,081,581	-6.8%	4,126,990	1.1%	3,022,530	-26.8%	-41.8%
Jan	5,084,085	4,307,001	-15.3%	4,195,911	-2.6%	4,316,998	2.9%	3,082,746	-28.6%	-39.4%
Feb	4,914,307	4,208,811	-14.4%	3,994,019	-5.1%	4,123,083	3.2%	3,076,966	-25.4%	-37.4%
Mar	5,287,813	4,534,564	-14.2%	4,266,768	-5.9%	3,136,162	-26.5%	3,660,639	16.7%	-30.8%
Apr	4,895,697	4,360,997	-10.9%	4,291,135	-1.6%	1,544,316	-64.0%	3,625,048	134.7%	-26.0%
May	5,087,877	4,277,628	-15.9%	4,330,922	1.2%	1,734,609	-59.9%			
Jun	4,586,556	4,009,340	-12.6%	3,823,863	-4.6%	2,210,725	-42.2%			
Jul	4,539,259	4,080,664	-10.1%	4,094,906	0.3%	2,366,749	-42.2%			
Aug	4,780,589	4,326,980	-9.5%	4,109,613	-5.0%	2,422,014	-41.1%			
Sep	3,524,818	4,041,992	14.7%	3,971,220	-1.8%	2,546,923	-35.9%			
Total	58,000,998	51,759,916	-10.8%	49,960,359	-3.5%	37,232,806	-25.5%			

METRORAIL TOTAL MONTHLY RIDERSHIP COMPARISONS BY FISCAL YEAR

Rail	FY 17	FY 18	Variance 17 to 18	FY 19	Variance 18 to 19	FY 20	Variance 19 to 20	FY 21	Variance 20 to 21	Variance 17 to 21
Oct	1,670,933	1,708,564	2.3%	1,757,225	2.8%	1,643,166	-6.5%	769,525	-53.2%	-53.9%
Nov	1,734,267	1,609,888	-7.2%	1,656,929	2.9%	1,469,448	-11.3%	699,492	-52.4%	-59.7%
Dec	1,734,768	1,517,341	-12.5%	1,553,804	2.4%	1,433,928	-7.7%	769,194	-46.4%	-55.7%
Jan	1,743,638	1,615,576	-7.3%	1,708,695	5.8%	1,576,340	-7.7%	799,119	-49.3%	-54.2%
Feb	1,676,215	1,545,581	-7.8%	1,501,458	-2.9%	1,549,118	3.2%	730,792	-52.8%	-56.4%
Mar	1,926,434	1,700,714	-11.7%	1,554,851	-8.6%	1,027,319	-33.9%	917,097	-10.7%	-52.4%
Apr	1,677,459	1,619,890	-3.4%	1,559,446	-3.7%	287,803	-81.5%	827,414	187.5%	-50.7%
May	1,787,885	1,618,504	-9.5%	1,531,597	-5.4%	337,696	-78.0%			
Jun	1,605,234	1,524,311	-5.0%	1,359,966	-10.8%	608,758	-55.2%			
Jul	1,500,243	1,527,380	1.8%	1,419,158	-7.1%	632,964	-55.4%			
Aug	1,693,524	1,632,471	-3.6%	1,463,646	-10.3%	641,275	-56.2%			
Sep	1,234,135	1,530,088	24.0%	1,427,726	-6.7%	654,244	-54.2%			
Total	19,984,735	19,150,308	-4.2%	18,494,501	-3.4%	11,862,059	-35.9%			

METROMOVER TOTAL MONTHLY RIDERSHIP COMPARISONS BY FISCAL YEAR

Mover	FY 17	FY 18	Variance 17 to 18	FY 19	Variance 18 to 19	FY 20	Variance 19 to 20	FY 21	Variance 20 to 21	Variance 17 to 21
	Oct	814,781	751,323	-7.8%	790,533	5.2%	831,234	5.1%	250,044	-69.9%
Nov	841,679	729,519	-13.3%	735,198	0.8%	799,632	8.8%	232,422	-70.9%	-72.4%
Dec	858,961	748,797	-12.8%	767,239	2.5%	849,832	10.8%	251,019	-70.5%	-70.8%
Jan	852,788	772,122	-9.5%	746,728	-3.3%	847,773	13.5%	255,968	-69.8%	-70.0%
Feb	780,514	698,107	-10.6%	675,160	-3.3%	855,398	26.7%	260,332	-69.6%	-66.6%
Mar	949,045	859,143	-9.5%	737,814	-14.1%	441,200	-40.2%	302,502	-31.4%	-68.1%
Apr	802,778	740,036	-7.8%	795,696	7.5%	130,549	-83.6%	310,772	138.1%	-61.3%
May	814,791	694,106	-14.8%	734,645	5.8%	146,454	-80.1%			
Jun	737,042	641,675	-12.9%	701,318	9.3%	203,637	-71.0%			
Jul	796,649	700,462	-12.1%	739,814	5.6%	210,596	-71.5%			
Aug	788,734	768,728	-2.5%	739,785	-3.8%	205,995	-72.2%			
Sep	425,641	698,505	64.1%	699,879	0.2%	219,696	-68.6%			
Total	9,463,403	8,802,523	-7.0%	8,863,809	0.7%	5,741,996	-35.2%			

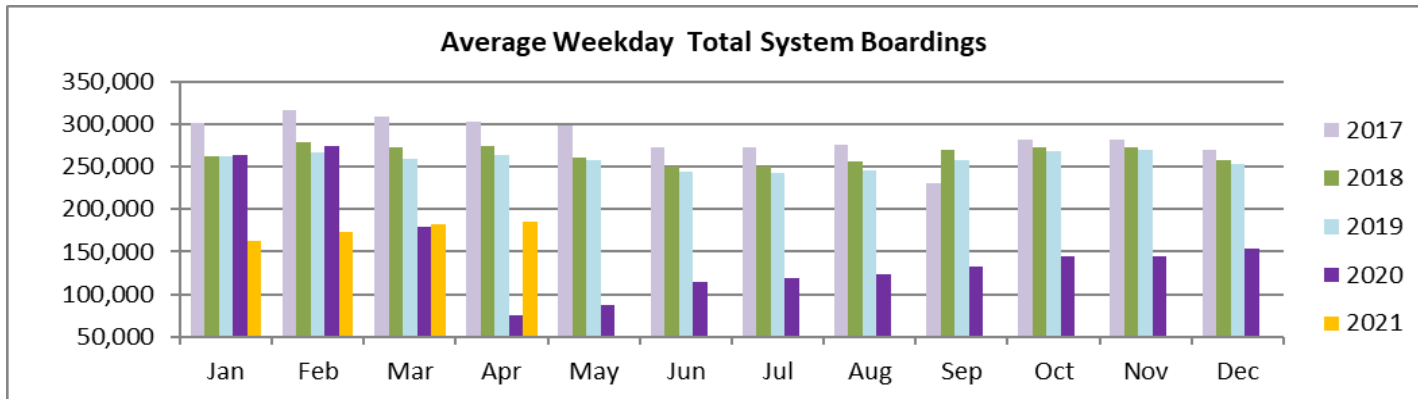
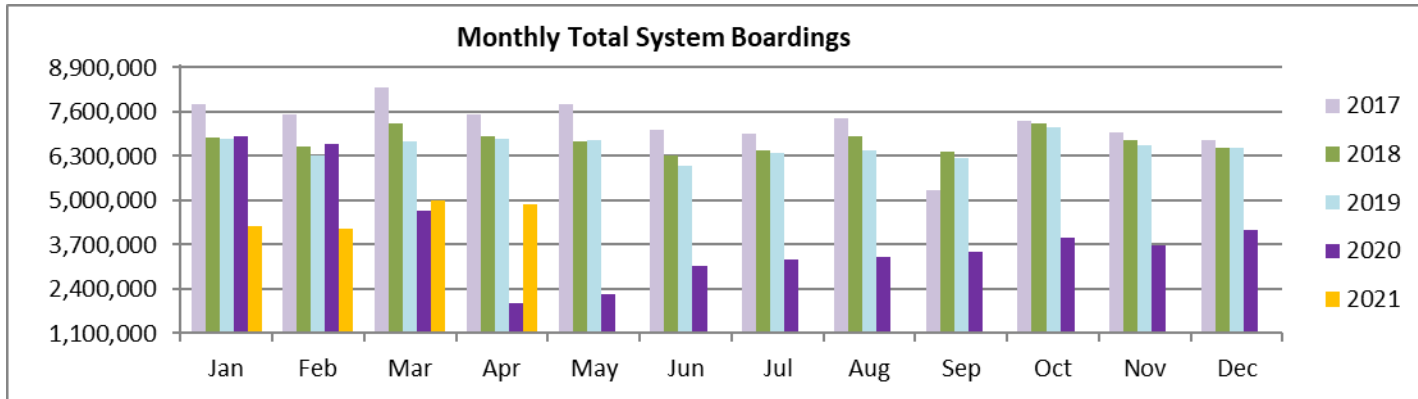
SPECIAL TRANSPORTATION SERVICES (STS) TOTAL MONTHLY RIDERSHIP COMPARISONS BY FISCAL YEAR

STS	FY 17	FY 18	Variance 17 to 18	FY 19	Variance 18 to 19	FY 20	Variance 19 to 20	FY 21	Variance 20 to 21	Variance 17 to 21
Oct	132,211	153,409	16.0%	162,564	6.0%	162,704	0.1%	97,388	-40.1%	-26.3%
Nov	137,030	143,375	4.6%	145,653	1.6%	144,366	-0.9%	89,387	-38.1%	-34.8%
Dec	133,439	136,955	2.6%	136,110	-0.6%	138,642	1.9%	96,366	-30.5%	-27.8%
Jan	134,273	140,042	4.3%	146,268	4.4%	149,114	1.9%	97,928	-34.3%	-27.1%
Feb	134,089	139,032	3.7%	141,396	1.7%	144,392	2.1%	98,285	-31.9%	-26.7%
Mar	153,790	150,384	-2.2%	153,191	1.9%	89,634	-41.5%	112,930	26.0%	-26.6%
Apr	137,217	148,879	8.5%	155,808	4.7%	26,877	-82.7%	120,122	346.9%	-12.5%
May	151,138	152,164	0.7%	158,665	4.3%	39,654	-75.0%			
Jun	140,623	143,653	2.2%	141,320	-1.6%	59,093	-58.2%			
Jul	133,656	141,020	5.5%	148,232	5.1%	61,765	-58.3%			
Aug	145,760	151,750	4.1%	147,331	-2.9%	66,563	-54.8%			
Sep	100,010	142,360	42.3%	141,387	-0.7%	80,346	-43.2%			
Total	1,633,236	1,743,023	6.7%	1,777,925	2.0%	1,163,150	-34.6%			

ALL-MODES COMBINED TOTAL MONTHLY RIDERSHIP COMPARISONS BY FISCAL YEAR

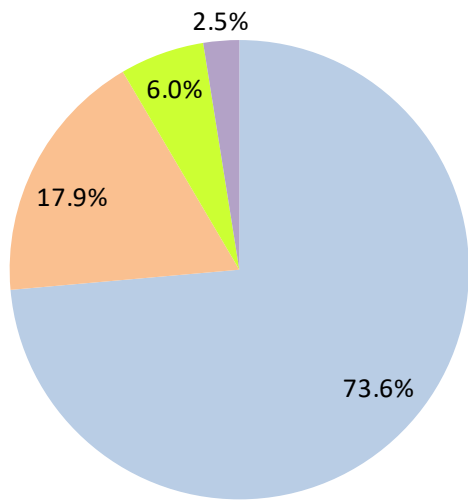
All Modes Month	Boardings					Variances				
	FY 17	FY 18	FY 19	FY 20	FY 21	17 TO 18	18 TO 19	19 TO 20	20 TO 21	17 TO 21
Oct	7,543,706	7,322,886	7,265,208	7,144,116	3,922,096	-2.9%	-0.8%	-1.7%	-45.1%	-48.0%
Nov	7,894,500	7,005,032	6,783,315	6,610,671	3,672,591	-11.3%	-3.2%	-2.5%	-44.4%	-53.5%
Dec	7,919,860	6,783,192	6,538,734	6,549,392	4,139,109	-14.4%	-3.6%	0.2%	-36.8%	-47.7%
Jan	7,814,784	6,834,741	6,797,602	6,890,225	4,235,761	-12.5%	-0.5%	1.4%	-38.5%	-45.8%
Feb	7,505,125	6,591,531	6,312,033	6,671,991	4,166,375	-12.2%	-4.2%	5.7%	-37.6%	-44.5%
Mar	8,317,082	7,244,805	6,712,624	4,694,315	4,993,168	-12.9%	-7.3%	-30.1%	6.4%	-40.0%
Apr	7,513,151	6,869,802	6,802,085	1,989,545	4,883,356	-8.6%	-1.0%	-70.8%	145.5%	-35.0%
May	7,841,691	6,742,402	6,755,829	2,258,413		-14.0%	0.2%	-66.6%		
Jun	7,069,455	6,318,979	6,026,467	3,082,213		-10.6%	-4.6%	-48.9%		
Jul	6,969,807	6,449,526	6,402,110	3,272,074		-7.5%	-0.7%	-48.9%		
Aug	7,408,607	6,879,929	6,460,375	3,335,847		-7.1%	-6.1%	-48.4%		
Sep	5,284,604	6,412,945	6,240,212	3,501,209		21.4%	-2.7%	-43.9%		
Total	89,082,372	81,455,770	79,096,594	56,000,011		-8.6%	-2.9%	-29.2%		

TOTAL MONTHLY AND AVERAGE WEEKDAY RIDERSHIP YEAR OVER YEAR COMPARISON CHARTS – ALL MODES COMBINED



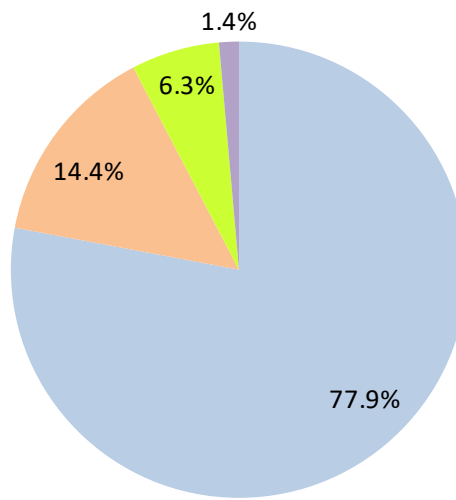
AVERAGE WEEKDAY RIDERSHIP - MODAL SPLITS

April 2021



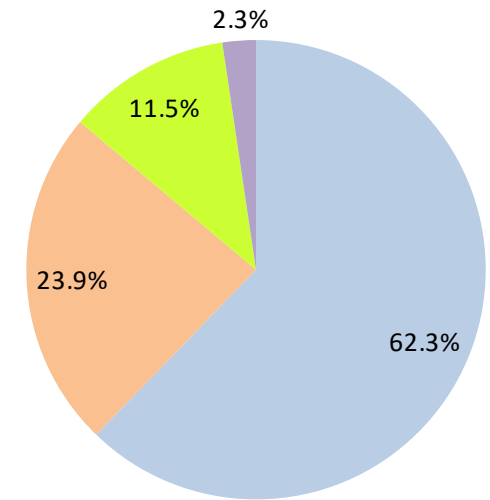
boardings

April 2020



boardings

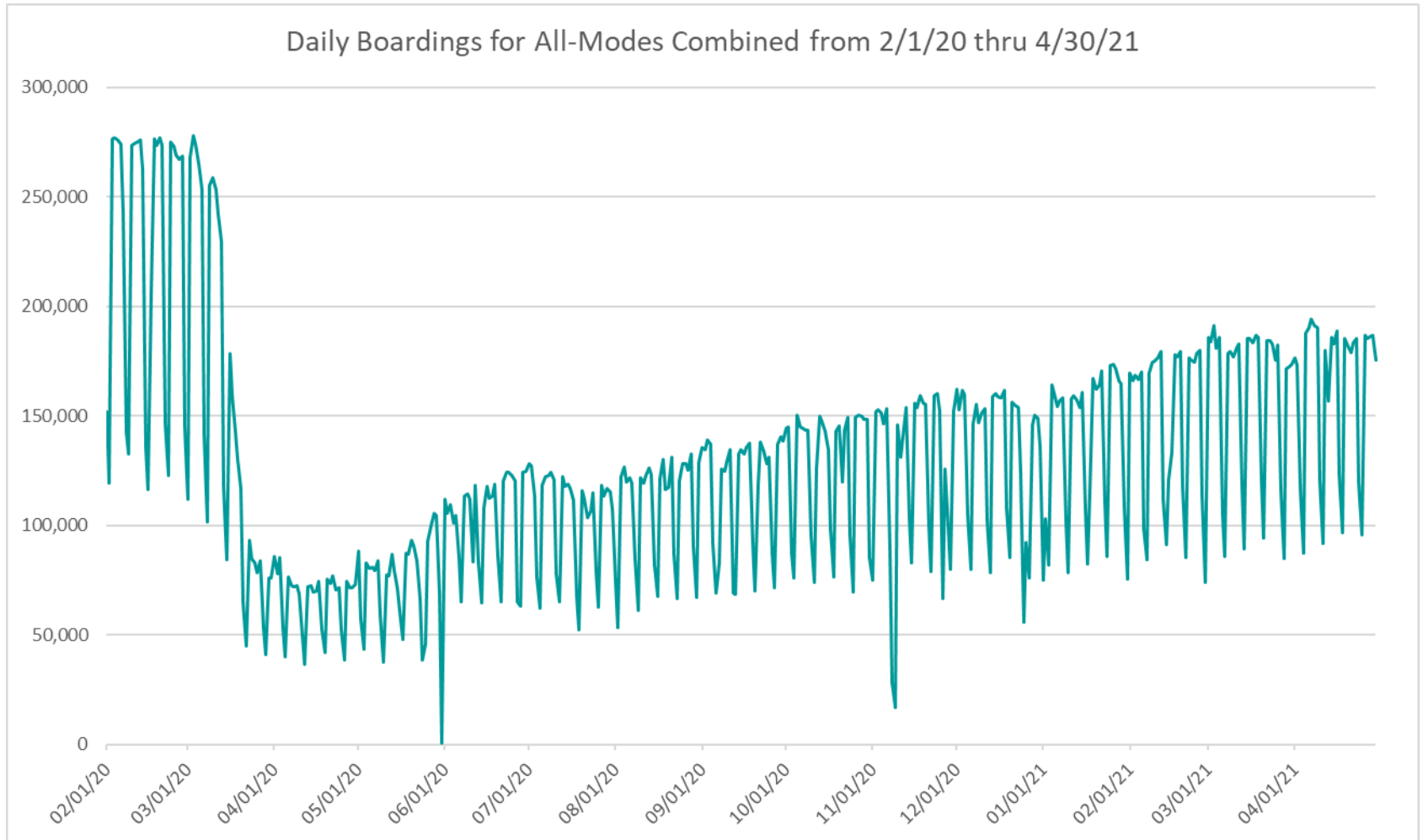
April 2019



boardings



DAILY RIDERSHIP FOR ALL MODES COMBINED SINCE FEBRUARY 1, 2020



- (1) National Emergency was declared on 3/13/20 as a result of the SARS-CoV-2 pandemic.
- (2) There was no Metrobus, Metrorail and Metromover service on 5/31/20, as a safety precaution.
- (3) The dip at the start of the second week of November 2020 is due to Hurricane Eta.
- (4) Periodic (weekly) variations are prominent, since weekday ridership is almost always significantly higher than weekend or holiday ridership.

Metrobus



METROBUS AVERAGE WEEKDAY BOARDINGS BY ROUTE (†)

Route	Average Weekday	Average Weekday	Percent Change	Average Weekday	Percent Change	Average Weekday	Percent Change	Average Weekday	Percent Change
	weekdays Apr-21	Apr-20	YOY	Feb-20	Current vs Feb-20	Mar-21	MOM	Apr-19	YO2Y
1 (*)	228	88	159.8%	184	24.1%	220	3.7%	262	-12.8%
2	2,229	1,117	99.6%	3,102	-28.1%	2,219	0.5%	2,281	-2.3%
3	5,347	1,552	244.6%	5,137	4.1%	4,940	8.2%	4,836	10.6%
7	2,664	775	243.9%	3,501	-23.9%	2,420	10.1%	3,188	-16.4%
8	4,384	1,186	269.7%	3,909	12.2%	4,279	2.5%	3,757	16.7%
9	6,420	2,249	185.5%	5,528	16.1%	6,182	3.9%	4,998	28.5%
10	1,902	595	219.7%	2,482	-23.3%	1,886	0.8%	2,249	-15.4%
11	6,567	2,604	152.2%	7,292	-9.9%	6,488	1.2%	7,320	-10.3%
12	1,646	1,156	42.4%	2,779	-40.8%	2,016	-18.4%	2,555	-35.6%
16	1,484	702	111.4%	1,862	-20.3%	1,436	3.4%	1,788	-17.0%
17	2,956	1,535	92.6%	3,878	-23.8%	3,113	-5.0%	3,823	-22.7%
19	1,224	297	311.6%	1,542	-20.7%	1,196	2.3%	1,671	-26.8%
21	1,694	1,118	51.5%	1,817	-6.8%	1,566	8.1%	1,849	-8.4%
22	2,828	1,061	166.6%	3,640	-22.3%	2,874	-1.6%	3,640	-22.3%
24 - Coral Way Limited	1,534	636	141.1%	1,340	14.5%	1,335	14.9%	1,799	-14.7%
27	5,729	2,552	124.5%	6,972	-17.8%	5,635	1.7%	6,463	-11.4%
29 (*)	386	195	98.5%	534	-27.7%	397	-2.8%	730	-47.1%
31 - BUSWAY LOCAL	733	311	136.1%	1,089	-32.7%	717	2.2%	1,043	-29.7%
32	1,653	944	75.1%	2,390	-30.8%	1,709	-3.3%	2,354	-29.8%
33	1,125	514	118.8%	1,687	-33.3%	1,127	-0.1%	1,541	-27.0%
34 EXPRESS (*)	842	242	247.2%	2,008	-58.1%	840	0.2%	2,068	-59.3%
35 (*)	1,872	1,238	51.2%	2,421	-22.7%	1,795	4.3%	2,270	-17.5%
36	1,794	1,225	46.5%	2,536	-29.2%	1,751	2.5%	2,346	-23.5%
37	3,129	1,108	182.5%	3,273	-4.4%	2,961	5.7%	3,204	-2.3%
38	4,593	2,400	91.4%	6,361	-27.8%	4,452	3.2%	6,569	-30.1%
39 EXPRESS (*)	277	74	273.7%	893	-69.0%	259	6.9%	1,001	-72.4%
40	1,055	501	110.6%	1,772	-40.4%	1,272	-17.1%	1,773	-40.5%
42	723	252	187.4%	820	-11.9%	749	-3.4%	839	-13.8%
46 - LIBERTY CITY CONN. (*)	24	22	10.1%	41	-40.6%	24	-1.0%	47	-48.9%
51 - FLAGLER MAX	2,563	575	345.8%	3,109	-17.6%	2,558	0.2%	3,083	-16.9%
52	915	497	84.2%	1,261	-27.4%	918	-0.3%	1,318	-30.6%
54	2,215	1,613	37.4%	2,940	-24.7%	2,400	-7.7%	2,898	-23.5%
55 MARLINS SHUTTLE								53	
56 (*)	208	72	189.7%	354	-41.3%	206	0.9%	369	-43.7%
57 (*)	345	108	219.3%	433	-20.5%	327	5.3%	394	-12.5%
62	1,641	1,186	38.4%	1,815	-9.6%	1,606	2.2%	1,819	-9.8%
71 (*)	436	166	162.1%	711	-38.6%	410	6.4%	657	-33.6%
72 (*)	427	232	84.1%	781	-45.4%	437	-2.3%	744	-42.7%

(†) In this table and those which follow, "YOY" stands for "year-over-year", "MOM" for "month-over-month" and "YO2Y" for "year over two years", i.e., current month vs 12 months prior, one month prior, and 24 months prior, respectively.

(*) Contracted routes

(a) Due to effects from the SARS-CoV-2 pandemic; rides were fare-free beginning April 22, 2020.

METROBUS AVERAGE WEEKDAY BOARDINGS BY ROUTE

Route <i>weekdays</i>	Average Weekday	Average Weekday	Percent Change	Average Weekday	Percent Change	Average Weekday	Percent Change	Average Weekday	Percent Change
	Apr-21	Apr-20	YOY	Feb-20	Current vs Feb-20	Mar-21	MOM	Apr-19	YO2Y
73	1,636	552	196.4%	2,124	-23.0%	1,504	8.8%	2,265	-27.8%
75	1,158	394	193.8%	1,429	-18.9%	1,219	-5.0%	1,340	-13.6%
77	7,042	2,949	138.8%	7,129	-1.2%	6,935	1.5%	7,107	-0.9%
79		57		361				364	
82 - WESTCHESTER CIRC. (*)	41	18	132.2%	62	-33.4%	28	44.3%	64	-36.2%
87	1,267	329	284.7%	1,499	-15.5%	1,228	3.1%	1,615	-21.6%
88	1,874	590	217.6%	2,076	-9.7%	1,798	4.3%	2,165	-13.4%
93 - BISCAYNE MAX	1,933	881	119.3%	3,334	-42.0%	1,897	1.9%	3,342	-42.2%
95 EXPRESS (*)	418	328	27.6%	1,690	-75.3%	430	-2.9%	2,078	-79.9%
99	1,263	435	190.1%	1,473	-14.2%	1,288	-2.0%	1,436	-12.1%
101 - A (*)	139	32	330.0%	177	-21.5%	126	9.9%	149	-6.9%
102 - B	1,171	419	179.6%	1,778	-34.1%	1,248	-6.2%	1,624	-27.8%
103 - C	250	244	2.2%	463	-46.1%	281	-11.1%	435	-42.6%
104	371	124	199.8%	837	-55.7%	407	-8.9%	960	-61.4%
105 - E	1,394	438	218.3%	1,287	8.3%	1,293	7.9%	1,211	15.2%
107 - G	1,175	377	211.5%	1,713	-31.4%	1,242	-5.4%	1,630	-27.9%
108 - H	494	136	263.7%	473	4.6%	438	12.8%	480	3.0%
110 - J	2,777	1,015	173.6%	2,508	10.7%	2,901	-4.3%	2,510	10.6%
112 - L	7,542	3,786	99.2%	7,636	-1.2%	7,006	7.6%	7,258	3.9%
113 - M	536	562	-4.7%	866	-38.1%	584	-8.3%	752	-28.8%
115 (*)	204	114	79.8%	180	13.4%	194	5.5%	137	49.5%
119 - S	9,360	3,613	159.0%	8,970	4.4%	8,600	8.8%	8,743	7.1%
120 - BEACH MAX	5,277	2,030	160.0%	6,667	-20.8%	4,997	5.6%	6,079	-13.2%
132 TRI-RAIL (DORAL)	21	9	119.5%	16	31.7%	15	33.0%	23	-9.8%
135 (*)	896	417	114.6%	1,399	-36.0%	857	4.4%	1,362	-34.2%
136	74	20	262.4%	126	-41.7%	72	1.7%	159	-53.8%
137 - WEST DADE CONN.	1,181	396	198.6%	1,626	-27.3%	1,196	-1.2%	1,695	-30.3%
150 - MIAMI BEACH AIRPORT FLYER (*)	1,332	449	196.4%	1,867	-28.7%	1,301	2.3%	1,843	-27.7%
155 - BISCAYNE GARDENS CIRCULATOR (*)	33	24	39.1%	44	-24.8%	32	4.7%	46	-28.3%
175 - NW MIAMI-DADE EXPRESS				33					
183	2,820	905	211.6%	3,149	-10.4%	2,644	6.6%	3,201	-11.9%
195 EXPRESS - BROWARD BLVD				372				410	
196 EXPRESS - SHERIDAN ST				383				394	
200 - CUTLER BAY LOCAL	143	52	176.5%	158	-9.1%	124	16.1%	169	-15.3%
202 - LITTLE HAITI CONN. (*)	120	95	26.0%	140	-14.1%	134	-10.6%	145	-17.5%
204 KILLIAN KAT		141		1,071				1,130	

METROBUS AVERAGE WEEKDAY BOARDINGS BY ROUTE

Route <i>weekdays</i>	Average Weekday	Average Weekday	Percent Change	Average Weekday	Percent Change	Average Weekday	Percent Change	Average Weekday	Percent Change
	Apr-21	Apr-20	YOY	Feb-20	Current vs Feb-20	Mar-21	MOM	Apr-19	YO2Y
207 (7st) - LITTLE HAVANA CIRC	770	646	19.2%	1,489	-48.3%	773	-0.3%	1,475	-47.8%
208 (8st) - LITTLE HAVANA CIRC	918	621	47.8%	1,308	-29.8%	844	8.7%	1,281	-28.4%
210 - SKYLAKE CIRC (*)	351	141	148.9%	282	24.7%	357	-1.5%	315	11.5%
211 - OVERTOWN CIRC. (*)	36	59	-38.3%	58	-37.2%	44	-16.6%	65	-43.9%
212 - SWEETWATER CIRC. (*)	18	8	134.7%	15	25.1%	14	29.4%	41	-54.9%
217 - BUNCHE PARK CIRC (*)	67	50	35.2%	97	-31.2%	67	-0.4%	78	-14.5%
238 EAST/WEST CONN.	346	45	664.5%	449	-23.0%	387	-10.5%	518	-33.2%
246 - NIGHT OWL	95	54	75.9%	94	1.5%	84	13.7%	96	-0.5%
248 - PRINCETON CIRCULATOR (*)	75	57	30.9%	135	-44.2%	95	-21.1%	127	-40.8%
252 - CORAL REEF MAX	534	164	226.0%	851	-37.2%	510	4.8%	910	-41.3%
254 - BROWNSVILLE CIRC. (*)	16	28	-42.7%	19	-15.0%	13	23.9%	18	-11.7%
267 - LUDLAM LIMITED (*)	105	49	113.3%	149	-29.4%	104	1.2%	141	-25.3%
272 SUNSET KAT (*)	265	132	100.8%	550	-51.8%	257	3.1%	534	-50.4%
277 - 7th AVENUE MAX	542	286	89.6%	683	-20.8%	556	-2.6%	635	-14.8%
286 - NORTH POINTE CIRC. (*)	38	14	169.4%	97	-61.3%	39	-3.9%	73	-48.8%
287 - SAGA BAY MAX	174	90	93.0%	358	-51.4%	166	4.9%	346	-49.7%
288 - KENDALL CRUISER		175		762				833	
295 EXPRESS - BROWARD BLVD - CIVIC CENTER				233				219	
296 EXPRESS - SHERIDAN ST - CIVIC CENTER				215				222	
297-27th AVENUE ORANGE MAX	901	454	98.7%	1,356	-33.6%	894	0.8%	1,315	-31.5%
301 DADE-MONROE EXPRESS(*)	917	264	247.9%	841	9.0%	922	-0.5%	891	3.0%
302 CARD SOUND EXPRESS(*)	78	27	185.6%	86	-10.0%	84	-7.6%	76	2.2%
344 (*)	80	38	110.8%	96	-16.8%	77	3.3%	104	-23.1%
500	61	2	3083.3%	81	-25.0%	52	16.5%	45	34.8%
836 EXPRESS	83					70	19.3%		
GREEN HILLS SHUTTLE (*)	6	16	-63.5%	9	-36.1%	7	-17.9%	12	-50.7%
KINGS CREEK SHUTTLE (*)	7	4	83.3%	13	-49.2%	8	-12.0%	14	-52.0%
SIERRALAKES SHUTTLE (*)	22	19	14.3%	45	-51.1%	16	35.4%	23	-2.2%
ROBERT SHARP SHUTTLE (*)	24	8	212.5%	10	150.0%	19	22.4%	4	533.3%
AHEPA SHUTTLE (*)	16	20	-17.3%	21	-21.9%	20	-18.0%	19	-15.8%
Total	136,282	58,097	134.6%	167,711	-18.7%	133,218	2.3%	164,352	-17.1%

- (*) The following routes are entirely operated under contract: 1, 29, 34, 35, 39, 46, 56, 57, 71, 72, 82, 95, 101-A, 115, 135, 150, 155, 202, 210, 211, 212, 217, 248, 254, 267, 272, 286, 301, 302 and 344, although some supplemental runs may be performed by DTPW. Conversely, a few routes that are nominally run by DTPW may have a few supplemental runs operated by contractors; Dade-Monroe routes 301 and 302 as well as six Lifeline routes are also under contracted operation.
- (1) Includes shuttles and those routes which were not run both years.
- (2) Several express routes were suspended at the end of March or the beginning of April 2020, due to the SARS-CoV-2 pandemic, while other routes had alignment and schedule modifications made to them, in an ongoing effort to optimize service delivery.

METROBUS AVERAGE SATURDAY BOARDINGS BY ROUTE

Route	Average Saturday	Average Saturday	Percent Change	Average Saturday	Percent Change	Average Saturday	Percent Change	Average Saturday	Percent Change
Saturdays	Apr-21	Apr-20	YOY	Feb-20	Current vs Feb-20	Mar-21	MOM	Apr-19	YO2Y
1 (*)	231	133	73.6%	215	7.2%	201	14.5%	203	13.5%
2	1,465	807	81.4%	1,616	-9.4%	1,206	21.5%	1,347	8.7%
3	4,823	1,838	162.3%	5,229	-7.8%	4,388	9.9%	5,383	-10.4%
7	1,686	517	226.5%	1,887	-10.7%	1,340	25.8%	2,070	-18.5%
8	2,423	1,107	118.9%	2,027	19.5%	2,478	-2.2%	2,191	10.6%
9	2,963	1,434	106.7%	3,034	-2.4%	3,290	-10.0%	3,066	-3.4%
10	1,740	780	123.0%	1,896	-8.2%	1,608	8.2%	1,835	-5.2%
11	4,329	2,435	77.8%	5,182	-16.5%	3,547	22.0%	5,557	-22.1%
16	1,421	676	110.3%	1,566	-9.3%	1,363	4.3%	1,498	-5.1%
17	2,501	1,235	102.6%	2,363	5.8%	2,123	17.8%	2,464	1.5%
22	2,173	1,055	106.1%	2,084	4.3%	1,991	9.2%	2,029	7.1%
24 - Coral Way Limited	1,300	467	178.4%	1,165	11.5%	1,003	29.6%	1,259	3.3%
27	4,460	2,017	121.1%	4,034	10.6%	4,087	9.1%	4,113	8.4%
31 - BUSWAY LOCAL	924	313	195.1%	896	3.2%	871	6.1%	990	-6.6%
32	865	671	28.8%	1,029	-16.0%	921	-6.1%	960	-10.0%
33	872	425	105.4%	951	-8.3%	968	-9.9%	1,028	-15.2%
35 (*)	1,174	752	56.2%	1,372	-14.4%	1,135	3.4%	1,058	11.0%
36	1,527	546	179.6%	1,289	18.4%	1,392	9.8%	1,374	11.2%
37	1,899	796	138.5%	2,090	-9.2%	1,799	5.6%	2,148	-11.6%
38	3,337	1,863	79.2%	4,715	-29.2%	3,368	-0.9%	5,050	-33.9%
40	656	261	151.1%	655	0.2%	616	6.6%	747	-12.1%
42	603	283	113.0%	552	9.3%	475	26.9%	587	2.7%
52	647	273	136.9%	686	-5.7%	690	-6.3%	697	-7.1%
54	1,799	1,008	78.5%	1,727	4.2%	1,629	10.5%	1,859	-3.2%
55 MARLINS SHUTTLE								90	
62	1,388	945	46.9%	1,343	3.4%	1,211	14.7%	1,301	6.7%
71 (*)	215	50	328.4%	252	-14.5%	219	-1.8%	209	3.2%
72 (*)	232	124	88.1%	350	-33.6%	254	-8.6%	391	-40.6%
73	1,026	208	394.6%	860	19.3%	784	30.9%	1,031	-0.5%
75	526	316	66.4%	468	12.3%	487	7.9%	551	-4.5%
77	4,033	2,109	91.2%	4,197	-3.9%	3,651	10.5%	4,298	-6.2%
87	489	131	274.0%	402	21.5%	472	3.7%	530	-7.7%
88	1,382	504	174.4%	1,620	-14.7%	1,328	4.1%	1,801	-23.2%
99	952	249	283.0%	849	12.2%	899	5.9%	946	0.7%

METROBUS AVERAGE SATURDAY BOARDINGS BY ROUTE

Route Saturdays	Average Saturday	Average Saturday	Percent Change	Average Saturday	Percent Change	Average Saturday	Percent Change	Average Saturday	Percent Change
	Apr-21	Apr-20	YOY	Feb-20	Current vs Feb-20	Mar-21	MOM	Apr-19	YO2Y
101 - A (*)	80	35	127.7%	71	13.3%	69	17.2%	78	2.9%
102 - B	775	278	178.5%	851	-8.9%	707	9.6%	931	-16.8%
103 - C	296	212	39.6%	315	-5.9%	409	-27.5%	306	-3.0%
104	150	63	138.5%	468	-67.9%	209	-28.2%	566	-73.4%
105 - E	838	279	200.4%	619	35.4%	699	20.0%	651	28.7%
107 - G	1,073	217	394.0%	1,066	0.7%	1,228	-12.6%	1,144	-6.2%
108 - H	485	167	189.8%	372	30.2%	469	3.4%	445	9.0%
110 - J	1,995	833	139.6%	1,952	2.2%	1,795	11.2%	1,838	8.6%
112 - L	5,067	2,893	75.2%	5,667	-10.6%	5,294	-4.3%	6,000	-15.5%
113 - M	469	372	25.9%	503	-6.9%	546	-14.2%	483	-3.1%
115 (*)	154	81	90.4%	82	87.7%	165	-6.4%	67	130.2%
119 - S	7,235	2,621	176.1%	6,861	5.5%	6,308	14.7%	6,897	4.9%
120 - BEACH MAX	3,746	1,589	135.8%	4,744	-21.0%	3,648	2.7%	4,754	-21.2%
135 (*)	340	275	23.7%	539	-36.9%	362	-5.9%	523	-35.0%
137 - WEST DADE CONN.	927	310	198.9%	1,027	-9.7%	919	0.9%	1,138	-18.5%
150 - MIAMI BEACH AIRPORT FLYER (*)	1,405	445	216.1%	1,604	-12.4%	1,368	2.7%	1,576	-10.9%
183	1,873	904	107.1%	1,790	4.6%	1,951	-4.0%	1,838	1.9%
200 - CUTLER BAY LOCAL	108	55	95.0%	119	-9.6%	87	23.5%	137	-21.2%
202 - LITTLE HAITI CONN. (*)	65	85	-23.5%	50	30.0%	94	-30.2%	68	-4.5%
207 (7st) - LITTLE HAVANA CIRC	783	442	77.1%	1,032	-24.2%	768	1.9%	1,169	-33.1%
208 (8st) - LITTLE HAVANA CIRC	937	517	81.2%	1,044	-10.3%	882	6.3%	989	-5.3%
210 - SKYLAKE CIRC (*)	130	94	38.1%	165	-21.5%	131	-1.0%	191	-32.1%
246 - NIGHT OWL	85	59	43.6%	84	0.4%	93	-8.9%	93	-9.1%
252 - CORAL REEF MAX	252	100	152.3%	302	-16.5%	206	22.3%	363	-30.5%
286 - NORTH POINTE CIRC. (*)	34	14	142.9%	41	-16.7%	31	9.7%	65	-47.7%
301 DADE-MONROE EXPRESS(*)	837	236	254.4%	801	4.4%	871	-4.0%	868	-3.6%
302 CARD SOUND EXPRESS(*)	87	20	332.5%	57	52.8%	79	9.5%	67	29.1%
338 - WEEKEND EXPRESS	188	6	3312.1%	237	-20.7%	158	18.8%	246	-23.7%
500	101			70	44.3%	99	2.5%	44	130.9%
12/21 WEEKEND INTERL.	2,308	592	289.9%	2,528	-8.7%	2,362	-2.3%	2,631	-12.3%
FEDERATION GARDENS SHUTTLE (*)	20	15	32.2%	28	-31.3%	22	-11.4%	25	-20.4%
Total	88,930	40,149	121.5%	93,742	-5.1%	83,862	6.0%	96,904	-8.2%

METROBUS AVERAGE SUNDAY BOARDINGS BY ROUTE

Route Sundays	Average Sunday	Average Sunday	Percent Change	Average Sunday	Percent Change	Average Sunday	Percent Change	Average Sunday	Percent Change
	Apr-21	Apr-20	YOY	Feb-20	Current vs Feb-20	Mar-21	MOM	Apr-19	YO2Y
1 (*)	180	103	74.1%	201	-10.5%	168	6.8%	144	24.8%
2	996	540	84.4%	1,335	-25.3%	699	42.6%	1,071	-6.9%
3	4,372	1,484	194.7%	4,353	0.5%	4,055	7.8%	4,045	8.1%
7	1,093	344	217.8%	1,654	-33.9%	1,112	-1.7%	1,480	-26.1%
8	1,698	757	124.3%	1,746	-2.8%	1,742	-2.5%	1,592	6.7%
9	2,434	1,103	120.7%	2,549	-4.5%	2,205	10.4%	2,373	2.6%
10	1,466	573	156.0%	1,441	1.7%	1,265	15.9%	1,326	10.6%
11	2,808	1,771	58.6%	3,917	-28.3%	2,503	12.2%	4,130	-32.0%
16	692	435	59.3%	997	-30.5%	778	-11.1%	809	-14.4%
17	1,777	671	164.8%	1,833	-3.1%	1,704	4.3%	1,693	5.0%
22	1,636	554	195.4%	1,548	5.7%	1,714	-4.6%	1,419	15.3%
24 - Coral Way Limited	852	364	134.3%	905	-5.9%	962	-11.5%	1,066	-20.1%
27	2,968	1,646	80.4%	2,918	1.7%	2,615	13.5%	2,878	3.1%
31 - BUSWAY LOCAL	547	273	100.4%	715	-23.5%	517	5.7%	639	-14.5%
32	477	441	8.0%	772	-38.3%	600	-20.6%	721	-33.9%
33	533	265	101.4%	607	-12.1%	506	5.5%	607	-12.1%
35 (*)	884	587	50.7%	942	-6.1%	816	8.4%	871	1.6%
36	1,155	646	78.7%	1,111	4.0%	1,300	-11.2%	1,008	14.6%
37	1,481	639	131.8%	1,739	-14.8%	1,535	-3.5%	1,599	-7.4%
38	3,515	1,460	140.7%	4,147	-15.2%	3,228	8.9%	4,120	-14.7%
40	377	196	93.0%	447	-15.7%	391	-3.4%	522	-27.8%
42	375	174	116.0%	416	-9.8%	349	7.5%	389	-3.4%
52	433	281	54.3%	466	-7.1%	436	-0.7%	452	-4.0%
54	1,120	721	55.4%	1,171	-4.3%	1,128	-0.7%	1,191	-6.0%
55 MARLINS SHUTTLE								59	
62	940	723	29.9%	891	5.5%	795	18.2%	780	20.5%
71 (*)	149	41	263.4%	162	-8.0%	153	-2.8%	140	6.7%
72 (*)	173	75	129.9%	265	-34.6%	237	-26.9%	244	-29.1%
73	473	153	210.0%	495	-4.4%	421	12.4%	496	-4.6%
75	307	113	171.9%	271	13.5%	320	-3.8%	261	17.6%
77	3,129	1,032	203.2%	2,815	11.2%	2,697	16.0%	2,835	10.4%
87	300	133	125.4%	319	-6.0%	273	9.7%	352	-14.8%
88	1,040	389	167.5%	1,286	-19.1%	1,045	-0.5%	1,294	-19.6%
99	664	191	247.3%	658	0.9%	667	-0.4%	613	8.3%

METROBUS AVERAGE SUNDAY BOARDINGS BY ROUTE

Route Sundays	Average Sunday	Average Sunday	Percent Change	Average Sunday	Percent Change	Average Sunday	Percent Change	Average Sunday	Percent Change
	Apr-21	Apr-20	YOY	Feb-20	Current vs Feb-20	Mar-21	MOM	Apr-19	YO2Y
101 - A (*)	59	24	147.4%	56	5.9%	47	26.3%	36	63.2%
102 - B	612	221	176.6%	717	-14.6%	594	3.0%	854	-28.3%
103 - C	204	178	14.6%	212	-3.4%	249	-18.0%	228	-10.2%
104	143	80	78.7%	317	-55.0%	111	28.4%	347	-58.9%
105 - E	706	196	259.9%	616	14.6%	810	-12.9%	609	15.9%
107 - G	739	249	197.4%	895	-17.5%	880	-16.0%	774	-4.5%
108 - H	418	129	225.1%	328	27.3%	429	-2.6%	361	15.9%
110 - J	1,543	582	165.1%	1,638	-5.8%	1,167	32.2%	1,501	2.8%
112 - L	4,660	2,087	123.3%	4,804	-3.0%	5,163	-9.7%	4,432	5.1%
113 - M	362	290	24.9%	431	-16.0%	411	-12.0%	340	6.5%
115 (*)	115	70	65.8%	80	44.1%	111	3.6%	56	107.0%
119 - S	6,491	2,693	141.0%	7,141	-9.1%	6,438	0.8%	6,996	-7.2%
120 - BEACH MAX	2,795	1,003	178.8%	3,469	-19.4%	2,305	21.2%	3,215	-13.1%
135 (*)	270	164	65.0%	349	-22.8%	283	-4.6%	380	-29.1%
137 - WEST DADE CONN.	697	291	139.9%	879	-20.7%	775	-10.0%	867	-19.6%
150 - MIAMI BEACH AIRPORT FLYER (*)	1,417	450	215.1%	1,574	-10.0%	1,383	2.4%	1,562	-9.3%
183	1,387	598	131.8%	1,413	-1.8%	1,419	-2.2%	1,395	-0.6%
200 - CUTLER BAY LOCAL	54	29	87.7%	59	-8.5%	48	12.2%	49	9.2%
202 - LITTLE HAITI CONN. (*)	66	67	-1.9%	39	68.6%	98	-33.1%	57	15.4%
207 (7st) - LITTLE HAVANA CIRC	614	370	65.8%	796	-23.0%	514	19.3%	687	-10.6%
208 (8st) - LITTLE HAVANA CIRC	778	459	69.5%	911	-14.6%	783	-0.6%	847	-8.1%
210 - SKYLAKE CIRC (*)	104	94	10.7%	143	-27.6%	117	-11.7%	147	-29.7%
246 - NIGHT OWL	80	53	50.5%	87	-8.3%	80	0.0%	104	-23.3%
252 - CORAL REEF MAX	241	113	114.0%	199	21.4%	187	28.8%	246	-1.9%
301 DADE-MONROE EXPRESS(*)	949	193	393.0%	751	26.3%	903	5.1%	819	15.8%
302 CARD SOUND EXPRESS(*)	43	19	126.3%	57	-24.6%	52	-17.3%	67	-35.3%
338 - WEEKEND EXPRESS	141	14	887.7%	252	-44.1%	112	26.2%	229	-38.5%
500	86	3	3036.4%	83	4.2%	77	12.4%	49	75.1%
12/21 WEEKEND INTERL.	1,420	286	396.9%	2,048	-30.7%	1,726	-17.7%	2,044	-30.5%
Total	68,233	29,875	128.4%	75,428	-9.5%	66,206	3.1%	72,507	-5.9%

METROBUS TOTAL MONTHLY BOARDINGS BY ROUTE

Route Monthly Total	Total Month	Total Month	Percent Change	Total Month	Percent Change	Total Month	Percent Change	Total Month	Percent Change
	Apr-21	Apr-20	YOY	Feb-20	Current vs Feb-20	Mar-21	MOM	Apr-19	YO2Y
1 (*)	6,666	2,878	131.6%	5,558	19.9%	6,546	1.8%	7,151	-6.8%
2	58,880	29,957	96.5%	75,463	-22.0%	58,653	0.4%	59,858	-1.6%
3	154,419	47,423	225.6%	146,294	5.6%	147,390	4.8%	144,103	7.2%
7	69,725	20,483	240.4%	86,077	-19.0%	65,460	6.5%	84,333	-17.3%
8	112,937	33,542	236.7%	95,295	18.5%	115,298	-2.0%	97,781	15.5%
9	162,830	59,611	173.2%	135,924	19.8%	164,154	-0.8%	131,713	23.6%
10	54,671	18,502	195.5%	64,874	-15.7%	54,879	-0.4%	62,125	-12.0%
11	173,025	74,120	133.4%	187,425	-7.7%	173,423	-0.2%	199,778	-13.4%
12	36,201	25,429	42.4%	55,585	-34.9%	46,369	-21.9%	56,205	-35.6%
16	41,107	19,890	106.7%	49,061	-16.2%	41,587	-1.2%	48,565	-15.4%
17	82,148	41,385	98.5%	96,715	-15.1%	86,893	-5.5%	100,735	-18.5%
19	26,922	6,541	311.6%	30,847	-12.7%	27,501	-2.1%	36,769	-26.8%
21	37,267	24,603	51.5%	36,341	2.5%	36,025	3.4%	40,679	-8.4%
22	77,461	29,773	160.2%	89,404	-13.4%	80,926	-4.3%	93,875	-17.5%
24 - Coral Way Limited	42,353	17,318	144.6%	36,237	16.9%	38,568	9.8%	48,878	-13.3%
27	155,746	70,795	120.0%	171,282	-9.1%	156,405	-0.4%	170,150	-8.5%
29 (*)	8,494	4,279	98.5%	10,684	-20.5%	9,137	-7.0%	16,063	-47.1%
31 - BUSWAY LOCAL	22,016	9,176	139.9%	29,125	-24.4%	22,050	-0.2%	29,462	-25.3%
32	41,727	25,214	65.5%	56,027	-25.5%	45,396	-8.1%	58,520	-28.7%
33	30,375	14,071	115.9%	40,918	-25.8%	31,806	-4.5%	40,436	-24.9%
34 EXPRESS (*)	18,518	5,334	247.2%	40,159	-53.9%	19,313	-4.1%	45,506	-59.3%
35 (*)	49,422	32,596	51.6%	59,041	-16.3%	49,096	0.7%	57,659	-14.3%
36	50,205	31,725	58.3%	61,606	-18.5%	51,031	-1.6%	61,137	-17.9%
37	82,360	30,107	173.6%	82,870	-0.6%	81,446	1.1%	85,485	-3.7%
38	128,461	66,080	94.4%	167,379	-23.3%	128,771	-0.2%	181,208	-29.1%
39 EXPRESS (*)	6,084	518	1074.5%	17,853	-65.9%	5,948	2.3%	22,016	-72.4%
40	27,348	12,851	112.8%	40,497	-32.5%	33,289	-17.8%	44,088	-38.0%
42	19,817	7,361	169.2%	20,825	-4.8%	20,518	-3.4%	22,362	-11.4%
46 - LIBERTY CITY CONN. (*)	532	483	10.1%	814	-34.6%	562	-5.3%	1,042	-48.9%
51 - FLAGLER MAX	56,388	12,650	345.8%	62,186	-9.3%	58,825	-4.1%	67,819	-16.9%
52	24,454	13,145	86.0%	30,522	-19.9%	25,614	-4.5%	33,592	-27.2%
54	60,413	42,390	42.5%	72,125	-16.2%	66,217	-8.8%	75,945	-20.5%
55 MARLINS SHUTTLE								775	
56 (*)	4,569	1,577	189.7%	7,071	-35.4%	4,732	-3.4%	8,109	-43.7%
57 (*)	7,580	2,374	219.3%	8,665	-12.5%	7,523	0.8%	8,663	-12.5%
62	45,418	32,755	38.7%	46,582	-2.5%	44,968	1.0%	48,347	-6.1%
71 (*)	11,053	4,026	174.5%	16,118	-31.4%	10,918	1.2%	15,842	-30.2%
72 (*)	11,010	5,896	86.7%	18,433	-40.3%	12,006	-8.3%	18,914	-41.8%

METROBUS TOTAL MONTHLY BOARDINGS BY ROUTE

Route Monthly Total	Total Month	Total Month	Percent Change	Total Month	Percent Change	Total Month	Percent Change	Total Month	Percent Change
	Apr-21	Apr-20	YOY	Feb-20	Current vs Feb-20	Mar-21	MOM	Apr-19	YO2Y
73	41,992	13,583	209.2%	48,767	-13.9%	39,406	6.6%	55,938	-24.9%
75	28,807	10,388	177.3%	31,994	-10.0%	31,274	-7.9%	32,723	-12.0%
77	183,573	77,445	137.0%	174,833	5.0%	184,891	-0.7%	184,891	-0.7%
79		397		7,228				8,015	
82 - WESTCHESTER CIRC. (*)	1,022	460	122.2%	1,482	-31.0%	852	20.0%	1,659	-38.4%
87	31,025	8,299	273.8%	33,273	-6.8%	31,229	-0.7%	39,058	-20.6%
88	50,923	16,552	207.7%	54,772	-7.0%	50,841	0.2%	60,013	-15.1%
93 - BISCAYNE MAX	42,527	19,391	119.3%	66,684	-36.2%	43,637	-2.5%	73,521	-42.2%
95 EXPRESS (*)	9,199	2,294	301.0%	33,796	-72.8%	9,901	-7.1%	45,710	-79.9%
99	34,246	11,335	202.1%	36,325	-5.7%	35,889	-4.6%	37,832	-9.5%
101 - A (*)	3,613	947	281.5%	4,114	-12.2%	3,367	7.3%	3,740	-3.4%
102 - B	31,320	11,216	179.2%	42,683	-26.6%	33,918	-7.7%	42,856	-26.9%
103 - C	7,497	6,938	8.1%	11,682	-35.8%	9,092	-17.5%	11,705	-36.0%
104	9,329	3,292	183.4%	20,351	-54.2%	10,644	-12.4%	24,778	-62.3%
105 - E	36,848	11,536	219.4%	31,302	17.7%	35,766	3.0%	31,674	16.3%
107 - G	33,096	10,160	225.7%	43,178	-23.3%	36,990	-10.5%	43,528	-24.0%
108 - H	14,484	4,173	247.1%	12,624	14.7%	13,673	5.9%	13,779	5.1%
110 - J	75,244	27,992	168.8%	66,481	13.2%	78,573	-4.2%	68,581	9.7%
112 - L	204,839	103,215	98.5%	200,268	2.3%	202,974	0.9%	201,396	1.7%
113 - M	15,104	15,016	0.6%	21,548	-29.9%	17,258	-12.5%	19,832	-23.8%
115 (*)	5,573	3,102	79.7%	4,334	28.6%	5,558	0.3%	3,497	59.4%
119 - S	260,832	100,751	158.9%	242,257	7.7%	248,782	4.8%	247,922	5.2%
120 - BEACH MAX	142,267	55,021	158.6%	170,942	-16.8%	138,736	2.5%	165,618	-14.1%
132 TRI-RAIL (DORAL)	411	206	99.5%	312	31.7%	340	20.9%	501	-18.0%
135 (*)	22,140	10,933	102.5%	32,067	-31.0%	22,297	-0.7%	33,567	-34.0%
136	1,620	447	262.4%	2,524	-35.8%	1,666	-2.8%	3,506	-53.8%
137 - WESTDADE CONN.	32,486	11,106	192.5%	41,167	-21.1%	34,283	-5.2%	45,307	-28.3%
150 - MIAMI BEACH AIRPORT FLYER (*)	40,579	13,458	201.5%	51,651	-21.4%	40,933	-0.9%	53,087	-23.6%
155 - BISCAYNE GARDENS CIRCULATOR (*)	729	524	39.1%	881	-17.3%	728	0.1%	1,017	-28.3%
175 - NW MIAMI-DADE EXPRESS				661					
183	75,072	25,916	189.7%	77,570	-3.2%	74,296	1.0%	83,355	-9.9%
195 EXPRESS - BROWARD BLVD				7,441				9,016	
196 EXPRESS - SHERIDAN ST				7,658				8,665	
200 - CUTLER BAY LOCAL	3,513	1,476	138.0%	3,984	-11.8%	2,098	67.4%	4,467	-21.4%
202 - LITTLE HAITI CONN. (*)	3,162	2,702	17.0%	3,200	-1.2%	3,852	-17.9%	3,699	-14.5%
204 KILLIAN KAT		986		21,418				24,868	

METROBUS TOTAL MONTHLY BOARDINGS BY ROUTE

Route	Total Month	Total Month	Percent Change	Total Month	Percent Change	Total Month	Percent Change	Total Month	Percent Change
	Apr-21	Apr-20	YOY	Feb-20	Current vs Feb-20	Mar-21	MOM	Apr-19	YO2Y
Monthly Total									
207 (7st) - LITTLE HAVANA CIRC	22,534	17,469	29.0%	38,127	-40.9%	22,899	-1.6%	39,870	-43.5%
208 (8st) - LITTLE HAVANA CIRC	27,047	17,565	54.0%	35,018	-22.8%	26,077	3.7%	35,530	-23.9%
210 - SKYLAKE CIRC (*)	8,662	3,855	124.7%	7,033	23.2%	9,197	-5.8%	8,283	4.6%
211 - OVERTOWN CIRC. (*)	800	1,296	-38.3%	1,159	-31.0%	1,003	-20.2%	1,426	-43.9%
212 - SWEETWATER CIRC. (*)	406	173	134.7%	295	37.6%	328	23.8%	901	-54.9%
217 - BUNCHE PARK CIRC (*)	1,475	1,091	35.2%	1,949	-24.3%	1,548	-4.7%	1,726	-14.5%
238 EAST/WEST CONN.	7,614	996	664.5%	8,987	-15.3%	8,890	-14.4%	11,395	-33.2%
246 - NIGHT OWL	2,748	490	460.8%	2,641	4.1%	2,612	5.2%	2,890	-4.9%
248 - PRINCETON CIRCULATOR (*)	1,652	1,262	30.9%	2,690	-38.6%	2,189	-24.5%	2,789	-40.8%
252 - CORAL REEF MAX	13,728	4,457	208.0%	19,325	-29.0%	13,294	3.3%	22,451	-38.9%
254 - BROWNSVILLE CIRC. (*)	359	626	-42.7%	384	-6.5%	303	18.5%	406	-11.7%
267 - LUDLAM LIMITED (*)	2,312	1,084	113.3%	2,978	-22.4%	2,388	-3.2%	3,095	-25.3%
272 SUNSET KAT (*)	5,834	2,905	100.8%	11,004	-47.0%	5,913	-1.3%	11,755	-50.4%
277 - 7th AVENUE MAX	11,915	6,285	89.6%	13,669	-12.8%	12,791	-6.8%	13,977	-14.8%
286 - NORTH POINTE CIRC. (*)	963	363	165.3%	2,145	-55.1%	1,024	-6.0%	1,876	-48.7%
287 - SAGA BAY MAX	3,829	1,984	93.0%	7,160	-46.5%	3,815	0.4%	7,606	-49.7%
288 - KENDALL CRUISER		1,225		15,249				18,321	
295 EXPRESS - BROWARD BLVD - CIVIC CENTER				4,668				4,822	
296 EXPRESS - SHERIDAN ST - CIVIC CENTER				4,297				4,887	
297-27th AVENUE ORANGE MAX	19,827	9,980	98.7%	27,125	-26.9%	20,563	-3.6%	28,924	-31.5%
301 DADE-MONROE EXPRESS(*)	27,315	7,512	263.6%	23,838	14.6%	28,302	-3.5%	26,341	3.7%
302 CARD SOUND EXPRESS(*)	2,226	754	195.2%	2,236	-0.4%	2,456	-9.4%	2,206	0.9%
338 - WEEKEND EXPRESS	1,126	79	1325.3%	2,191	-48.6%	1,078	4.5%	1,900	-40.7%
344 (*)	1,756	833	110.8%	1,919	-8.5%	1,777	-1.2%	2,283	-23.1%
500	2,086	53	3835.8%	2,301	-9.3%	1,901	9.7%	1,364	52.9%
836 EXPRESS	1,827					557	228.0%		
12/21 WEEKEND INTERL.	14,913	3,511	324.8%	20,830	-28.4%	16,353	-8.8%	18,697	-20.2%
GREEN HILLS SHUTTLE (*)	23	63	-63.5%	36	-36.1%	35	-34.3%	70	-67.1%
KINGS CREEK SHUTTLE (*)	33	18	83.3%	52	-36.5%	30	10.0%	55	-40.0%
SIERRALAKES SHUTTLE (*)	110	77	42.9%	180	-38.9%	65	69.2%	90	22.2%
ROBERT SHARP SHUTTLE (*)	95	38	150.0%	38	150.0%	97	-2.1%	15	533.3%
AHEPA SHUTTLE (*)	81	98	-17.3%	83	-2.4%	79	2.5%	77	5.2%
FEDERATION GARDENS SHUTTLE (*)	78	59	32.2%	142	-45.1%	88	-11.4%	98	-20.4%
Total	3,625,048	1,544,316	134.7%	4,123,083	-12.1%	3,660,639	-1.0%	4,291,135	-15.5%

YEAR-OVER-YEAR BUS RIDERSHIP BY ROUTE SERVICE TYPE

Boardings by Service Type and Route	Average Weekday	Average Weekday	Percent Change	Average Saturday	Average Saturday	Percent Change	Average Sunday	Average Sunday	Percent Change	Total Monthly	Total Monthly	Percent Change
	Apr-21	Apr-20	21 vs 20	Apr-21	Apr-20	21 vs 20	Apr-21	Apr-20	21 vs 20	Apr-21	Apr-20	21 vs 20
Express Routes												
34 EXPRESS (*)	842	242	247.2%							18,518	5,334	247.2%
39 EXPRESS (*)	277	74	273.7%							6,084	518	1074.5%
95-EXPRESS (*)	418	328	27.6%							9,199	2,294	301.0%
150-MIAMI BEACH AIRPORT FLYER (*)	1,332	449	196.4%	1,405	445	216.1%	1,417	450	215.1%	40,579	13,458	201.5%
175 - NW MIAMI-DADE EXPRESS												
195 EXPRESS - BROWARD BLVD												
196 EXPRESS - SHERIDAN ST												
295 EXPRESS - BROWARD BLVD - CIVIC CENTER												
296 EXPRESS - SHERIDAN ST - CIVIC CENTER												
204 KAT-KILLIAN		141									986	
288 KENDALL CRUISER		175									1,225	
338 - WEEKEND EXPRESS				188	6	3312.1%	141	14	887.7%	1,126	79	1325.3%
836 EXPRESS	83									1,827		
Subtotal Express Routes	2,951	1,409	109.4%	1,593	450	253.9%	1,557	464	235.8%	77,333	23,894	223.7%
Percentage of All Bus Routes	2.2%	2.4%		1.8%	1.1%		2.3%	1.6%		2.1%	1.5%	
Contracted Regular & Circulator Routes												
1	228	88	159.8%	231	133	73.6%	180	103	74.1%	6,666	2,878	131.6%
29	386	195	98.5%							8,494	4,279	98.5%
35	1,872	1,238	51.2%	1,174	752	56.2%	884	587	50.7%	49,422	32,596	51.6%
46 - LIBERTY CITY CONN.	24	22	10.1%							532	483	10.1%
56	208	72	189.7%							4,569	1,577	189.7%
57	345	108	219.3%							7,580	2,374	219.3%
71	436	166	162.1%	215	50	328.4%	149	41	263.4%	11,053	4,026	174.5%
72	427	232	84.1%	232	124	88.1%	173	75	129.9%	11,010	5,896	86.7%
82 - WESTCHESTER CIRC	41	18	132.2%	30	18					1,022	460	122.2%
101 - A	139	32	330.0%	80	35	127.7%	59	24	147.4%	3,613	947	281.5%
115	204	114	79.8%	154	81	90.4%	115	70	65.8%	5,573	3,102	79.7%
135	896	417	114.6%	340	275			164		22,140	10,933	102.5%
155 - BISCAYNE GARDENS CIRC	33	24	39.1%							729	524	39.1%
202 - LITTLE HAITI CONN.	120	95	26.0%	65	85	-23.5%	66	67	-1.9%	3,162	2,702	17.0%
210 - SKY LAKE CIRC	351	141	148.9%	130	94	38.1%	104	94	10.7%	8,662	3,855	124.7%
211-OVERTOWN CIRC	36	59	-38.3%							800	1,296	-38.3%
212-SWEETWATER CIRC	18	8	134.7%							406	173	134.7%
217 - BUNCHE PARK CIRC	67	50	35.2%							1,475	1,091	35.2%
248 - PRINCETON CIRCULATOR	75	57	30.9%							1,652	1,262	30.9%
254-BROWNSVILLE CIRC	16	28	-42.7%							359	626	-42.7%
267-LUDLAM LIMITED	105	49	113.3%							2,312	1,084	113.3%
272 KAT-SUNSET	265	132	100.8%							5,834	2,905	100.8%
286-NORTH POINTE CIRC	38	14	169.4%	34	14	142.9%				963	363	165.3%
344	80	38	110.8%							1,756	833	110.8%
Subtotal Contracted Reg. & Circ. Routes	6,411	3,397	88.7%	2,686	1,660	61.8%	1,999	1,224	63.4%	159,784	86,265	85.2%
Percentage of All Bus Routes	4.7%	5.8%		3.0%	4.1%		2.9%	4.1%		4.4%	5.6%	

(1) Several express routes were suspended at the end of March or the beginning of April 2020, due to the SARS-CoV-2 pandemic, while other routes had alignment and schedule modifications made to them, in an ongoing effort to optimize service delivery..

(*) Express routes under contracted operation.

YEAR-OVER-YEAR BUS RIDERSHIP BY ROUTE SERVICE TYPE

Boardings by Service Type and Route	Average Weekday	Average Weekday	Percent Change	Average Saturday	Average Saturday	Percent Change	Average Sunday	Average Sunday	Percent Change	Total Monthly	Total Monthly	Percent Change
	Apr-21	Apr-20	21 vs 20	Apr-21	Apr-20	21 vs 20	Apr-21	Apr-20	21 vs 20	Apr-21	Apr-20	21 vs 20
Contracted Express Routes												
301-DADE MONROE EXPRESS	917	264	247.9%	837	236	254.4%	949	193	393.0%	27,315	7,512	263.6%
302-CARD SOUND EXPRESS	78	27	185.6%	87	20	332.5%	43	19	126.3%	2,226	754	195.2%
Subtotal Contracted Express Routes	995	291	242.1%	923	256	260.5%	992	212	369.0%	29,541	8,266	257.4%
Percentage of All Bus Routes	0.7%	0.5%		1.0%	0.6%		1.5%	0.7%		0.8%	0.5%	
Limited Stop Routes												
51-FLAGLER MAX	2,563	575	345.8%							56,388	12,650	345.8%
93 - BISCAYNE MAX	1,933	881	119.3%							42,527	19,391	119.3%
120 - BEACH MAX	5,277	2,030	160.0%	3,746	1,589	135.8%	2,795	1,003	178.8%	142,267	55,021	158.6%
252-CORAL REEF MAX	534	164	226.0%	252	100	152.3%	241	113	114.0%	13,728	4,457	208.0%
277-7TH AVENUE MAX	542	286	89.6%							11,915	6,285	89.6%
287-SAGA BAY MAX	174	90	93.0%							3,829	1,984	93.0%
297-27th AVENUE ORANGE MAX	901	454	98.7%							19,827	9,980	98.7%
Subtotal Limited Stop (MAX) Routes	11,925	4,480	166.2%	3,999	1,689	136.8%	3,036	1,115	172.2%	290,481	109,768	164.6%
Percentage of All Bus Routes	8.8%	7.7%		4.5%	4.2%		4.4%	3.7%		8.0%	7.1%	
Free Route												
132 -TRI-RAIL DORAL	21	9	119.5%							411	206	99.5%
Percentage of All Bus Routes	0.0%	0.0%								0.0%	0.0%	
Shuttles												
55-MARLINS SHUTTLE												
Percentage of All Bus Routes												
Contractor-Operated Lifeline Routes												
GREEN HILLS SHUTTLE	6	16	-63.5%							23	63	-63.5%
KINGS CREEK SHUTTLE	7	4	83.3%							33	18	83.3%
SIERRA LAKES SHUTTLE	22	19	14.3%							110	77	42.9%
ROBERT SHARP SHUTTLE	24	8	212.5%							95	38	150.0%
AHEPA SHUTTLE	16	20	-17.3%							81	98	-17.3%
FEDERATION GARDENS SHUTTLE				20	15	32.2%				78	59	32.2%
Subtotal Contractor-Operated Lifeline Routes	74	66	12.9%	20	15	32.2%				420	353	19.0%
Percentage of All Bus Routes	0.1%	0.1%		0.0%	0.0%					0.0%	0.0%	
Other Circulator Route												
200-CUTLER BAY LOCAL	143	52	176.5%	108	55	95.0%	54	29		3,513	1,476	138.0%
Percentage of All Bus Routes	0.1%	0.1%		0.1%	0.1%		0.1%	0.1%		0.1%	0.1%	
All Other (Regular) Routes	113,762	48,394	135.1%	79,603	36,024	121.0%	60,596	26,832	125.8%	3,063,565	1,314,088	133.1%
Percentage of All Bus Routes	83.5%	83.3%		89.5%	89.7%		88.8%	89.8%		84.5%	85.1%	
Total Bus System	136,282	58,097	134.6%	88,930	40,149	121.5%	68,233	29,875	128.4%	3,625,048	1,544,316	134.7%

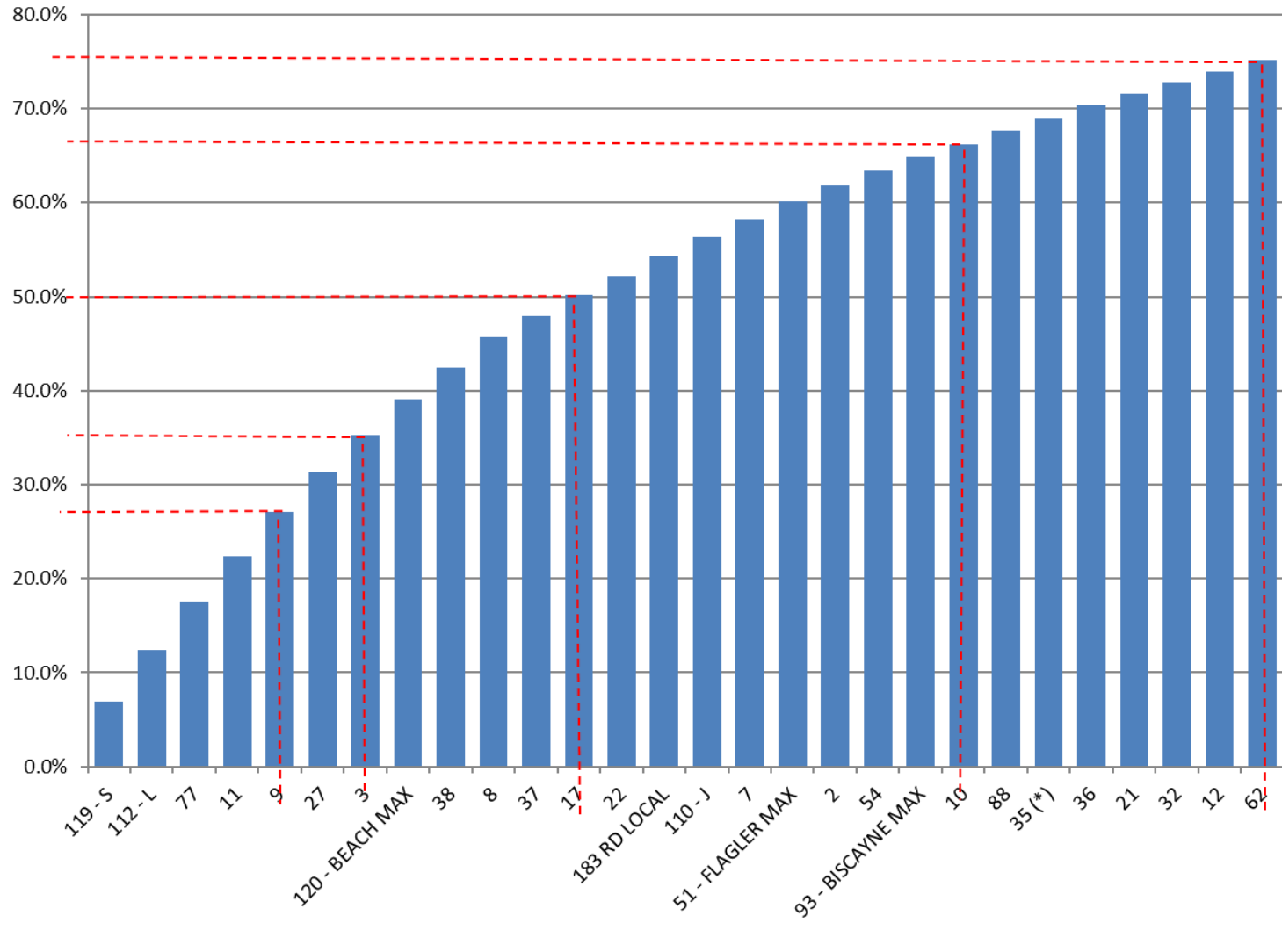
Bus Routes as Ranked by Percentage of Average Weekday Ridership

Rank	Route	Average Weekday	Percent Share	Cumul Pct Share	Rank	Route	Average Weekday	Percent Share	Cumul Pct Share	Rank	Route	Average Weekday	Percent Share	Cumul Pct Share
1	119	9,360	6.9%	6.9%	36	19	1,224	0.9%	83.3%	71	200	143	0.1%	99.1%
2	112	7,542	5.5%	12.4%	37	137	1,181	0.9%	84.2%	72	101	139	0.1%	99.2%
3	77	7,042	5.2%	17.6%	38	107	1,175	0.9%	85.1%	73	202	120	0.1%	99.3%
4	11	6,567	4.8%	22.4%	39	102	1,171	0.9%	85.9%	74	267	105	0.1%	99.3%
5	9	6,420	4.7%	27.1%	40	75	1,158	0.8%	86.8%	75	246	95	0.1%	99.4%
6	27	5,729	4.2%	31.3%	41	33	1,125	0.8%	87.6%	76	836	83	0.1%	99.5%
7	3	5,347	3.9%	35.2%	42	40	1,055	0.8%	88.4%	77	344	80	0.1%	99.5%
8	120	5,277	3.9%	39.1%	43	208	918	0.7%	89.1%	78	302	78	0.1%	99.6%
9	38	4,593	3.4%	42.5%	44	301	917	0.7%	89.7%	79	248	75	0.1%	99.6%
10	8	4,384	3.2%	45.7%	45	52	915	0.7%	90.4%	80	136	74	0.1%	99.7%
11	37	3,129	2.3%	48.0%	46	297	901	0.7%	91.1%	81	217	67	0.0%	99.7%
12	17	2,956	2.2%	50.2%	47	135	896	0.7%	91.7%	82	500	61	0.0%	99.8%
13	22	2,828	2.1%	52.2%	48	34	842	0.6%	92.3%	83	82	41	0.0%	99.8%
14	183	2,820	2.1%	54.3%	49	207	770	0.6%	92.9%	84	286	38	0.0%	99.8%
15	110	2,777	2.0%	56.3%	50	31	733	0.5%	93.4%	85	211	36	0.0%	99.9%
16	7	2,664	2.0%	58.3%	51	42	723	0.5%	94.0%	86	155	33	0.0%	99.9%
17	51	2,563	1.9%	60.2%	52	277	542	0.4%	94.4%	87	46	24	0.0%	99.9%
18	2	2,229	1.6%	61.8%	53	113	536	0.4%	94.8%	88	RS	24	0.0%	99.9%
19	54	2,215	1.6%	63.4%	54	252	534	0.4%	95.2%	89	SL	22	0.0%	99.9%
20	93	1,933	1.4%	64.8%	55	108	494	0.4%	95.5%	90	132	21	0.0%	100.0%
21	10	1,902	1.4%	66.2%	56	71	436	0.3%	95.8%	91	212	18	0.0%	100.0%
22	88	1,874	1.4%	67.6%	57	72	427	0.3%	96.2%	92	254	16	0.0%	100.0%
23	35	1,872	1.4%	69.0%	58	95	418	0.3%	96.5%	93	AS	16	0.0%	100.0%
24	36	1,794	1.3%	70.3%	59	29	386	0.3%	96.7%	94	KC	7	0.0%	100.0%
25	21	1,694	1.2%	71.6%	60	104	371	0.3%	97.0%	95	GH	6	0.0%	100.0%
26	32	1,653	1.2%	72.8%	61	210	351	0.3%	97.3%					
27	12	1,646	1.2%	74.0%	62	238	346	0.3%	97.5%					
28	62	1,641	1.2%	75.2%	63	57	345	0.3%	97.8%					
29	73	1,636	1.2%	76.4%	64	39	277	0.2%	98.0%					
30	24	1,534	1.1%	77.5%	65	272	265	0.2%	98.2%					
31	16	1,484	1.1%	78.6%	66	103	250	0.2%	98.4%					
32	105	1,394	1.0%	79.6%	67	1	228	0.2%	98.5%					
33	150	1,332	1.0%	80.6%	68	56	208	0.2%	98.7%					
34	87	1,267	0.9%	81.5%	69	115	204	0.1%	98.8%					
35	99	1,263	0.9%	82.4%	70	287	174	0.1%	99.0%					
											Total Boardings	136,282	100.0%	100.0%

entirely
contracted
contracted
supplementals

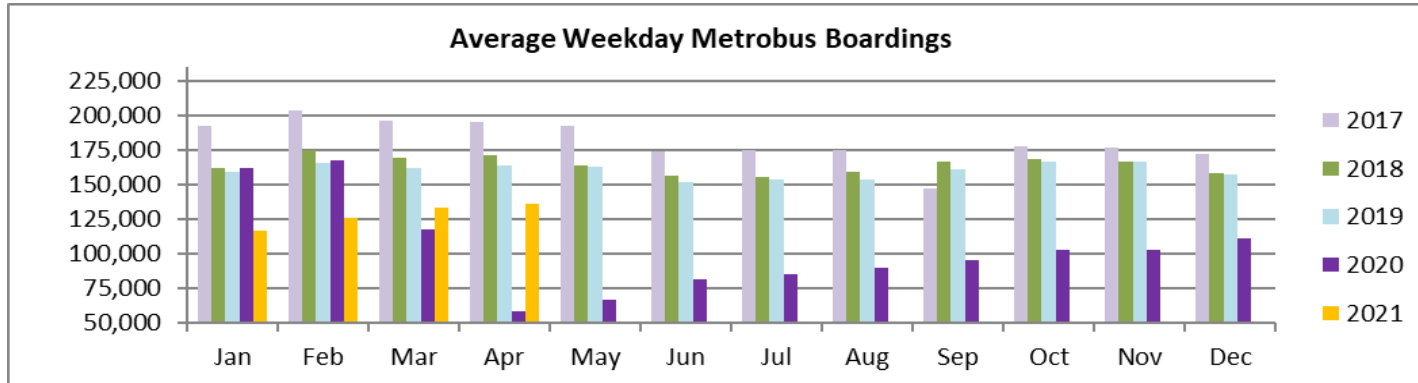
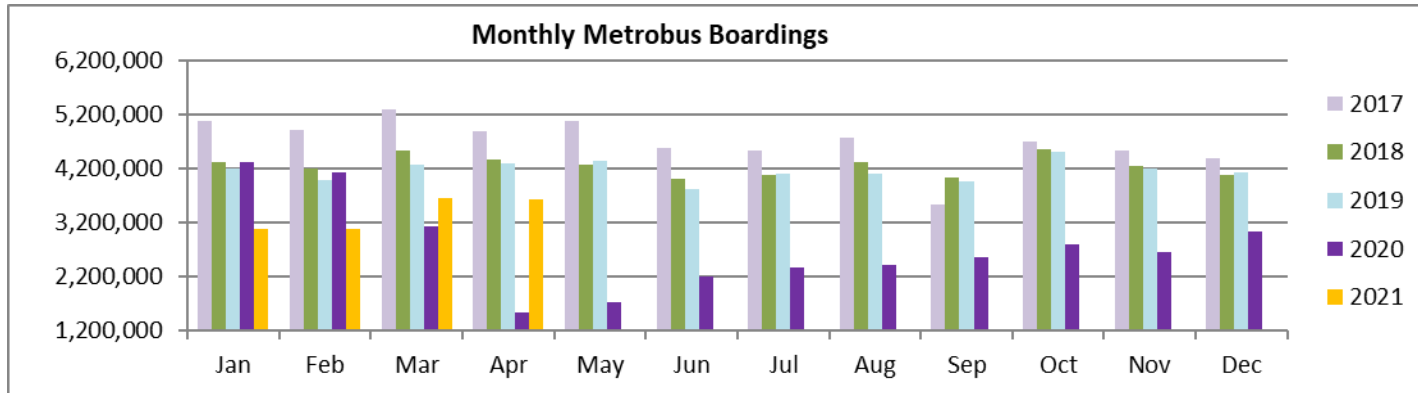
(1) Average weekday ridership rounded to the nearest unit; the routes shaded in blue are directly operated, with supplemental runs provided by contractors.
(2) Includes the five Lifeline Shuttles that operate on weekdays: Ahepa, Green Hills, Kings Creek, Robert Sharp and Sierra Lakes.

**Bus - Cumulative Percentage Average Weekday Ridership Share
Top 1/4, 1/3, 1/2, 2/3 and 3/4 of Routes**



(*) Route entirely run by contractor

TOTAL MONTHLY AND AVERAGE WEEKDAY RIDERSHIP YEAR OVER YEAR COMPARISON CHARTS – METROBUS



**“TOP 5 / BOTTOM 5” BUS ROUTES AVERAGE WEEKDAY RIDERSHIP PERFORMANCE
YEAR OVER YEAR COMPARISONS**

Route	Apr-21	Apr-20	Absolute Delta (1)	Percent Delta (2)
119 - S (†)	9,360	3,613	5,747	159.0%
9 (†)	6,420	2,249	4,172	185.5%
77 (†)	7,042	2,949	4,093	138.8%
11	6,567	2,604	3,963	152.2%
3 (†)	5,347	1,552	3,796	244.6%
113 - M	536	562	-27	-4.7%
211 - OVERTOWN CIRC. (*)	36	59	-23	-38.3%
254 - BROWNSVILLE CIRC. (*)	16	28	-12	-42.7%
46 - LIBERTY CITY CONN. (*)	24	22	2	10.1%
103 - C	250	244	5	2.2%

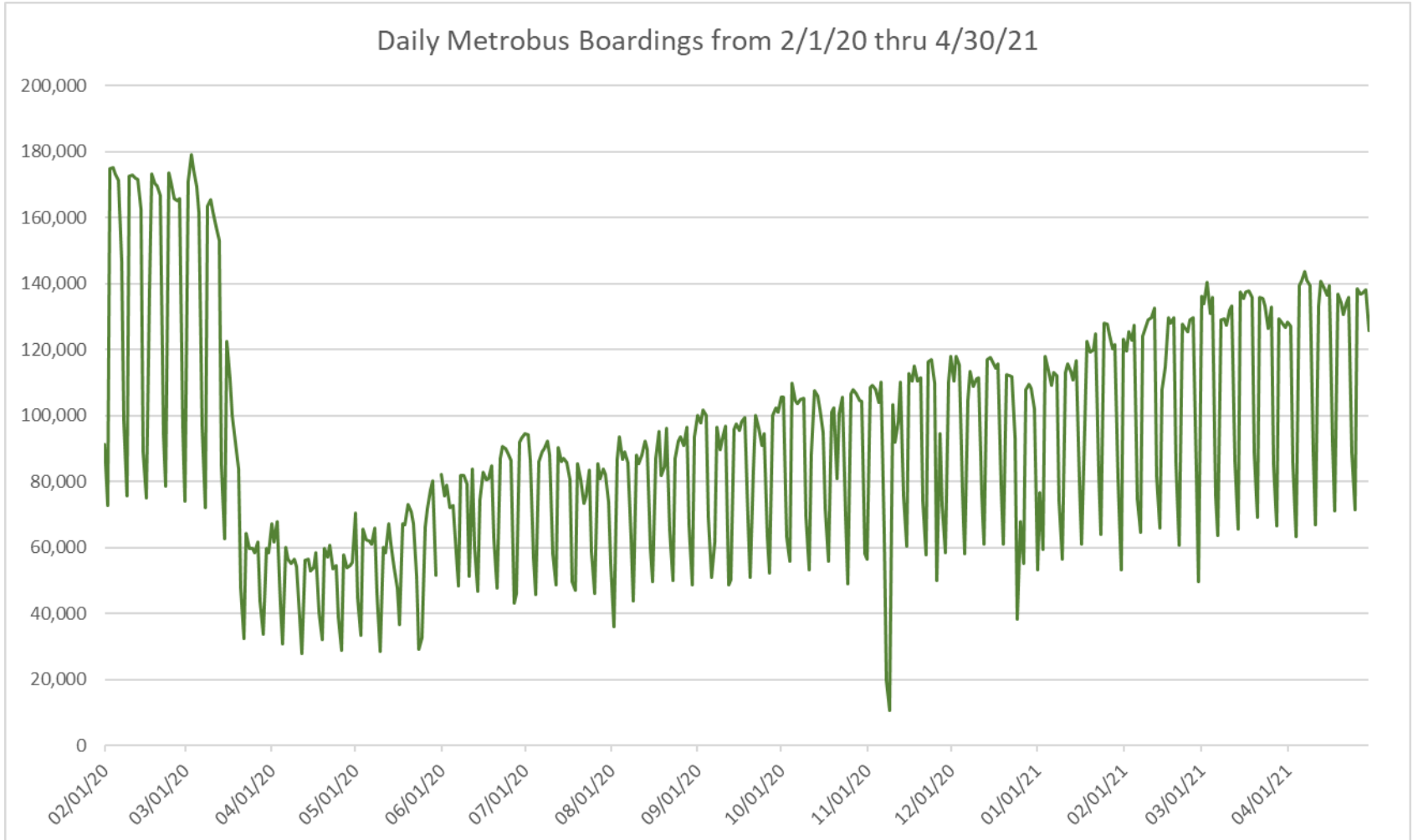
(†) Route with supplementals run by contractor.

(*) Route entirely run by contractor.

(1) Averages rounded to the nearest boarding, data as reported by APC system or/and contractor, depending on route; Lifelines excluded.

(2) As a result of the SARS-CoV-2 pandemic, rides were fare-free beginning March 22, 2020; more bus routes began reporting YOY gains in April 2021, since April 2020 was the second month showing clear reduction effects on ridership from the SARS-CoV-2 pandemic.

DAILY METROBUS RIDERSHIP SINCE FEBRUARY 1, 2020



- (1) National Emergency was declared on 3/13/20 as a result of the SARS-CoV-2 pandemic.
- (2) There was no Metrobus, Metrorail and Metromover service on 5/31/20, as a safety precaution.
- (3) The dip at the start of the second week of November 2020 is due to Hurricane Eta.
- (4) Periodic (weekly) variations are prominent, since weekday ridership is almost always significantly higher than weekend or holiday ridership.

METROBUS PARKING PATRONAGE SUMMARY April 2021

PARK-RIDE LOT	ACTUAL AVAILABLE SPACES	ACTUAL OCCUPANCY	PERCENT OCCUPANCY
Transitway / SW 152nd St	200	60	30%
Transitway / SW 168th St	149	44	30%
Transitway / SW 200th Street (effective February 2020)	100	29	29%
Transitway / SW 112 Ave (Target)	450	64	14%
Transitway / SW 244th St	95	26	27%
Transitway / SW 296th St	139	41	29%
Transitway / SW 344th St	248	124	50%
Coral Reef Drive 117/Turnpike	95	67	71%
Golden Glades - East Lot	535	147	27%
Golden Glades - West Lot	1,007	63	6%
Hammocks Town Center (SW 152 Ave / SW 104 St)	50	0	0%
Kendall Dr./SW 127th Ave	161	7	4%
West Kendall Transit Term (Kendall Dr / SW162 Ave)	40	3	8%
NW 7th Avenue Transit Village (NW 7 Ave / NW 62 St)	25	22	88%
Miami Gardens Dr. / NW 73rd Ave	136	0	0%
Dolphin Station (effective Mar 2020)	348	29	8%
I-75 / Miami Gardens Dr (effective June 2019)	298	0	0%
TOTAL	4,076	726	18%

Note: some park-ride lots are joint-use and the number of park-ride vehicles may exceed the number of spaces allocated.

Metrorail



METRORAIL AVERAGE WEEKDAY BOARDINGS BY STATION (†)

Weekdays	Average Weekday	Average Weekday	Percent Change (*)	Average Weekday	Percent Change	Average Weekday	Percent Change	Average Weekday	Percent Change
STATIONS	Apr-21	Apr-20	YOY	Feb-20	Current vs Feb-20	Mar-21	MOM	Apr-19	YO2Y
ALLAPATTAH	1,313	598	119.8%	1,942	-32.4%	1,299	1.1%	1,795	-26.9%
BRICKELL	4,386	758	479.0%	6,529	-32.8%	4,350	0.8%	6,050	-27.5%
BROWNSVILLE	701	327	114.7%	862	-18.6%	720	-2.5%	809	-13.3%
CIVIC CENTER	2,849	219	1200.8%	6,143	-53.6%	2,878	-1.0%	5,671	-49.8%
COCONUT GROVE	1,102	472	133.5%	1,795	-38.6%	1,095	0.6%	1,355	-18.7%
CULMER	899	954	-5.8%	1,392	-35.4%	917	-2.0%	1,265	-28.9%
DADELAND NORTH	3,696	492	651.7%	5,926	-37.6%	3,589	3.0%	5,731	-35.5%
DADELAND SOUTH	3,310	1,212	173.0%	7,150	-53.7%	3,305	0.1%	6,863	-51.8%
DOUGLAS ROAD (*)		644		3,624		1,526		3,569	
DR. MARTIN LUTHER KING, JR.	757	385	96.7%	1,157	-34.5%	810	-6.6%	1,050	-27.9%
EARLINGTON HEIGHTS	1,021	563	81.3%	1,662	-38.5%	1,020	0.1%	1,519	-32.8%
GOVERNMENT CENTER	3,940	912	332.2%	10,557	-62.7%	3,887	1.3%	10,089	-60.9%
HIALEAH	729	251	190.3%	1,253	-41.8%	761	-4.3%	1,233	-40.9%
MIAMI INTERNATIONAL AIRPORT	765	237	222.0%	1,711	-55.3%	779	-1.9%	1,603	-52.3%
NORTHSIDE	1,097	467	134.9%	1,476	-25.6%	1,133	-3.2%	1,327	-17.3%
OKEECHOBEE	694	239	190.1%	1,164	-40.4%	704	-1.5%	1,143	-39.3%
OVERTOWN / ARENA	850	250	240.1%	2,274	-62.6%	844	0.8%	2,072	-59.0%
PALMETTO	817	226	261.3%	1,543	-47.1%	854	-4.4%	1,465	-44.3%
SANTA CLARA	536	185	189.6%	812	-34.0%	539	-0.6%	737	-27.3%
SOUTH MIAMI	1,202	368	226.9%	3,015	-60.1%	1,194	0.7%	2,838	-57.6%
TRI-RAIL	805	460	74.9%	1,207	-33.3%	805	0.0%	1,140	-29.4%
UNIVERSITY	929	226	311.6%	2,784	-66.6%	892	4.1%	2,336	-60.2%
VIZCAYA	804	279	188.4%	1,390	-42.1%	795	1.2%	1,352	-40.5%
TOTAL	33,203	10,724	209.6%	67,367	-50.7%	34,699	-4.3%	63,011	-47.3%

(†) In this table and those which follow, "YOY" stands for "year-over-year", "MOM" for "month-over-month" and "YO2Y" for "year over two years", i.e., current month vs 12 months prior, one month prior and 24 months prior, respectively.

(*) Douglas Road Station was closed throughout the month of April 2021, due to construction.

(**) Unleash Live video camera data was missing on several days at several stations during the month of April 2021; calculations of average daily ridership take this into account.

(***) Due to effects from the SARS-CoV-2 pandemic; rides were fare-free beginning March 22, 2020.

METRORAIL AVERAGE SATURDAY BOARDINGS BY STATION

Saturdays	Average Saturday	Average Saturday	Percent Change	Average Saturday	Percent Change	Average Saturday	Percent Change	Average Saturday	Percent Change
STATIONS	Apr-21	Apr-20	YOY	Feb-20	Current vs Feb-20	Mar-21	MOM	Apr-19	YO2Y
ALLAPATTAH	835	376	122.1%	1,051	-20.6%	843	-0.9%	984	-15.1%
BRICKELL	2,823	442	538.6%	2,811	0.4%	2,662	6.0%	2,706	4.3%
BROWNSVILLE	479	138	246.7%	520	-7.8%	498	-3.7%	511	-6.2%
CIVIC CENTER	685	164	319.1%	959	-28.6%	743	-7.7%	911	-24.8%
COCONUT GROVE	691	311	122.4%	928	-25.5%	711	-2.7%	652	6.1%
CULMER	558	338	65.2%	721	-22.5%	554	0.8%	658	-15.1%
DADELAND NORTH	1,885	410	360.4%	1,994	-5.5%	1,858	1.5%	1,916	-1.6%
DADELAND SOUTH	2,030	434	368.0%	2,625	-22.7%	2,033	-0.2%	2,521	-19.5%
DOUGLAS ROAD (*)		509		1,319		752		1,330	
DR. MARTIN LUTHER KING, JR.	535	325	64.7%	625	-14.4%	534	0.2%	581	-8.0%
EARLINGTON HEIGHTS	669	377	77.6%	935	-28.5%	673	-0.6%	836	-19.9%
GOVERNMENT CENTER	2,313	1,197	93.2%	4,262	-45.7%	2,348	-1.5%	3,662	-36.9%
HIALEAH	415	163	155.1%	583	-28.9%	449	-7.7%	592	-30.0%
MIAMI INTERNATIONAL AIRPORT	721	225	221.3%	1,330	-45.8%	697	3.6%	1,254	-42.5%
NORTHSIDE	832	415	100.7%	878	-5.2%	842	-1.2%	827	0.6%
OKEECHOBEE	378	127	199.0%	408	-7.4%	369	2.5%	397	-4.7%
OVERTOWN / ARENA	449	185	142.8%	678	-33.8%	471	-4.7%	536	-16.3%
PALMETTO	340	87	293.1%	458	-25.8%	340	0.0%	389	-12.5%
SANTA CLARA	324	94	243.8%	422	-23.2%	317	2.2%	403	-19.5%
SOUTH MIAMI	734	161	356.8%	1,256	-41.5%	650	13.0%	1,238	-40.7%
TRI-RAIL	534	432	23.5%	614	-13.1%	518	2.9%	555	-3.9%
UNIVERSITY	544	52	956.8%	714	-23.8%	531	2.4%	638	-14.7%
VIZCAYA	508	220	131.1%	622	-18.3%	479	6.0%	608	-16.5%
TOTAL	19,282	7,177	168.7%	26,714	-27.8%	19,870	-3.0%	24,702	-21.9%

(*) Douglas Road Station was closed throughout the month of April 2021, due to construction.

METRORAIL AVERAGE SUNDAY BOARDINGS BY STATION

Sundays	Average Sunday	Average Sunday	Percent Change	Average Sunday	Percent Change	Average Sunday	Percent Change	Average Sunday	Percent Change
STATIONS	Apr-21	Apr-20	YOY	Feb-20	Current vs Feb-20	Mar-21	MOM	Apr-19	YO2Y
ALLAPATTAH	610	296	105.7%	791	-22.9%	605	0.7%	713	-14.5%
BRICKELL	2,176	362	501.1%	2,379	-8.5%	2,112	3.1%	2,024	7.5%
BROWNSVILLE	362	240	51.1%	406	-10.8%	358	1.3%	382	-5.2%
CIVIC CENTER	529	136	289.5%	791	-33.2%	540	-2.0%	722	-26.8%
COCONUT GROVE	514	177	190.4%	838	-38.7%	512	0.4%	467	10.2%
CULMER	463	233	99.2%	616	-24.8%	443	4.5%	548	-15.5%
DADELAND NORTH	1,347	300	349.3%	1,685	-20.1%	1,306	3.1%	1,300	3.6%
DADELAND SOUTH	1,560	341	357.8%	2,210	-29.4%	1,491	4.6%	1,883	-17.1%
DOUGLAS ROAD (*)		175		1,090		432		932	
DR. MARTIN LUTHER KING, JR.	370	333	11.1%	506	-27.0%	393	-6.0%	420	-12.0%
EARLINGTON HEIGHTS	551	345	59.8%	799	-31.1%	508	8.5%	658	-16.3%
GOVERNMENT CENTER	1,871	1,128	65.9%	4,044	-53.7%	1,775	5.4%	2,780	-32.7%
HIALEAH	341	180	89.2%	472	-27.8%	330	3.3%	458	-25.7%
MIAMI INTERNATIONAL AIRPORT	723	221	227.8%	1,343	-46.2%	669	8.0%	1,311	-44.9%
NORTHSIDE	624	339	83.9%	653	-4.4%	611	2.0%	630	-1.0%
OKEECHOBEE	226	55	312.3%	273	-17.4%	212	6.7%	253	-10.6%
OVERTOWN / ARENA	410	186	120.8%	544	-24.8%	405	1.1%	455	-10.0%
PALMETTO	208	89	133.7%	336	-38.1%	201	3.5%	244	-14.8%
SANTA CLARA	205	67	206.7%	280	-26.7%	222	-7.7%	246	-16.9%
SOUTH MIAMI	534	157	241.4%	987	-45.8%	478	11.8%	878	-39.1%
TRI-RAIL	429	196	118.6%	528	-18.8%	379	13.1%	442	-3.0%
UNIVERSITY	361	79	357.8%	608	-40.7%	333	8.3%	449	-19.7%
VIZCAYA	369	162	127.4%	524	-29.6%	322	14.6%	410	-10.1%
TOTAL	14,778	5,792	155.1%	22,701	-34.9%	14,633	1.0%	18,601	-20.6%

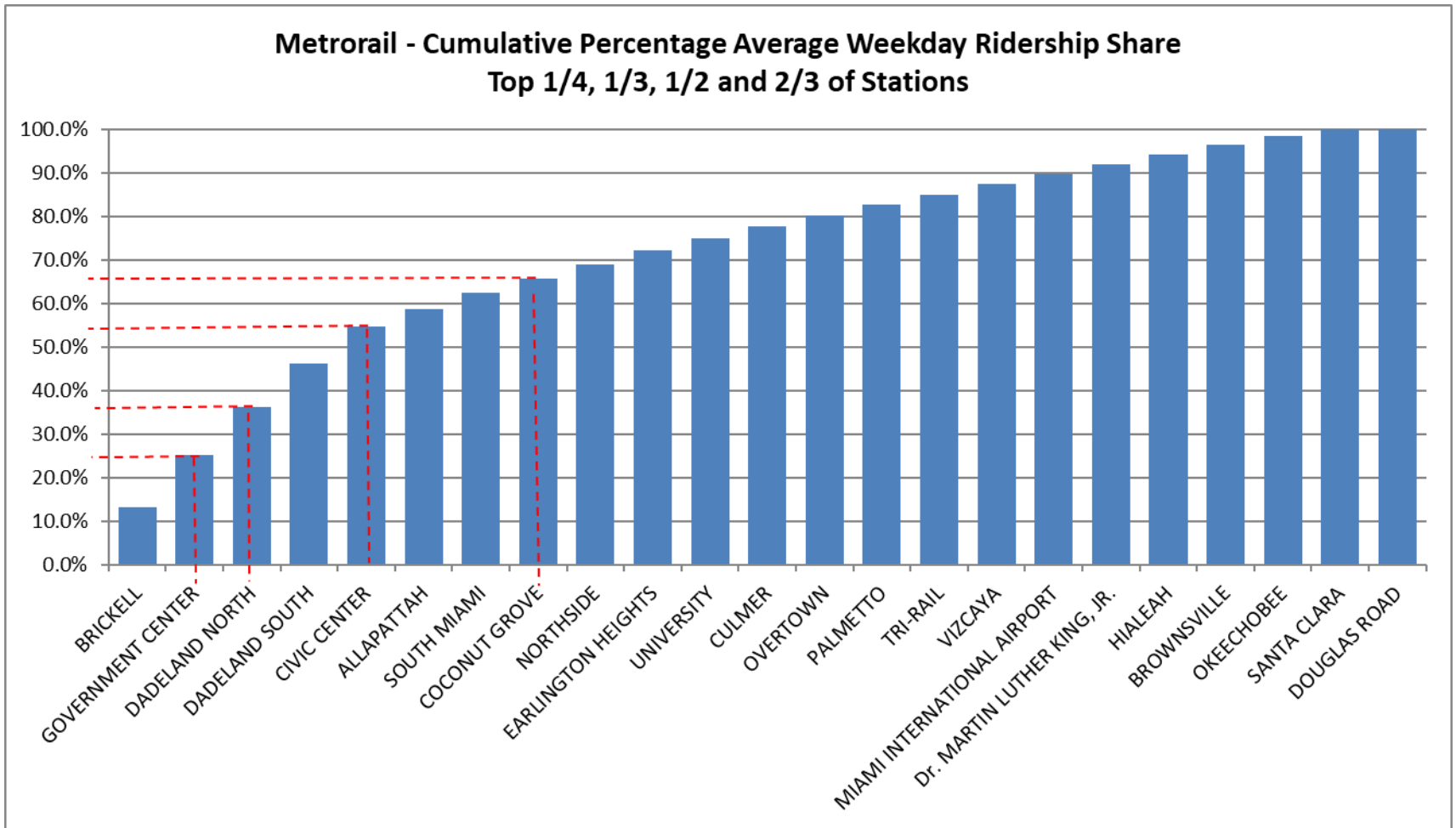
(*) Douglas Road Station was closed throughout the month of April 2021, due to construction.

METRORAIL TOTAL MONTHLY BOARDINGS BY STATION

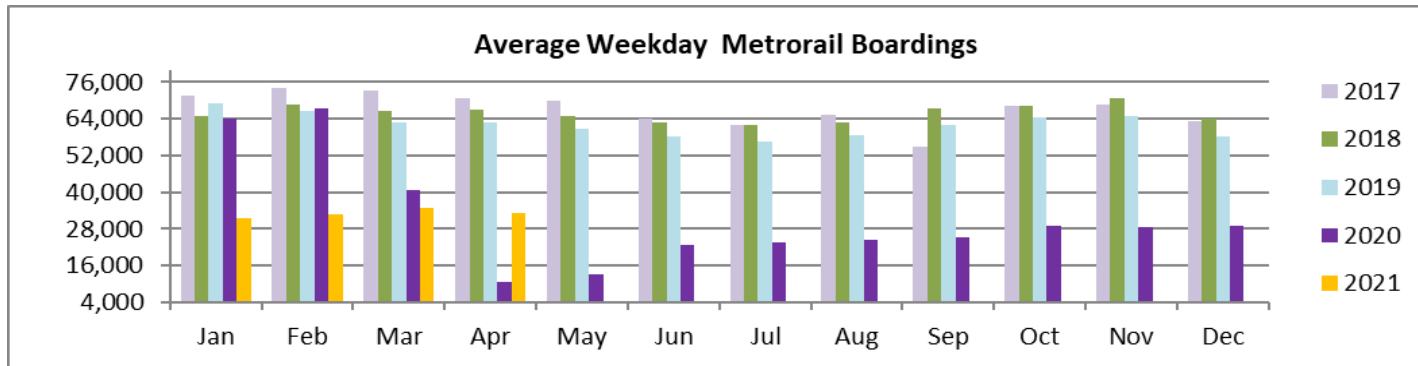
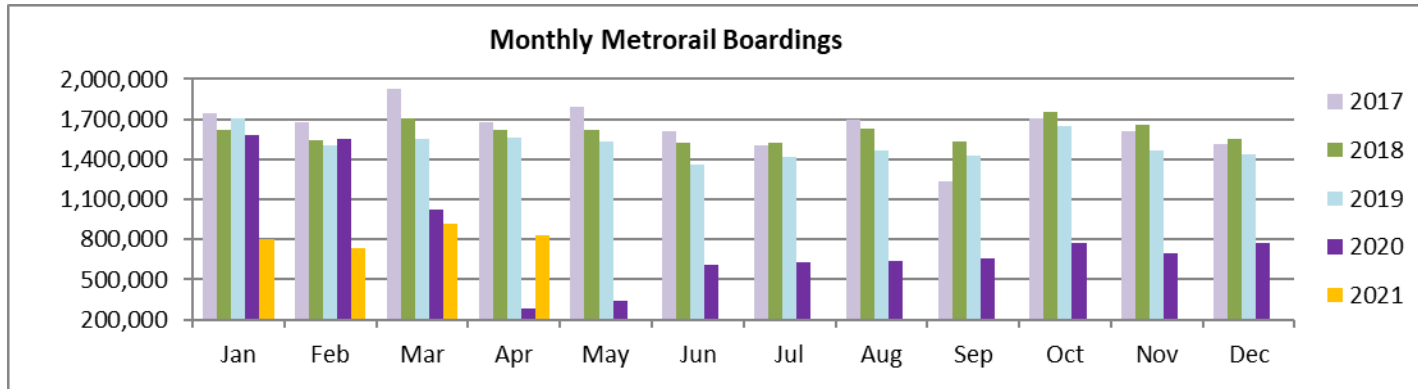
Monthly Totals	Total Month	Total Month	Percent Change	Total Month	Percent Change	Total Month	Percent Change	Total Month	Percent Change
STATIONS	Apr-21	Apr-20	YOY	Feb-20	Current vs Feb-20	Mar-21	MOM	Apr-19	YO2Y
ALLAPATTAH	33,356	15,835	110.6%	46,868	-28.8%	35,664	-6.5%	46,287	-27.9%
BRICKELL	112,103	19,883	463.8%	152,259	-26.4%	119,140	-5.9%	152,021	-26.3%
BROWNSVILLE	18,096	8,700	108.0%	21,285	-15.0%	19,973	-9.4%	21,367	-15.3%
CIVIC CENTER	64,691	6,016	975.3%	128,921	-49.8%	71,326	-9.3%	131,285	-50.7%
COCONUT GROVE	27,966	12,336	126.7%	43,580	-35.8%	30,077	-7.0%	34,284	-18.4%
CULMER	22,969	23,279	-1.3%	33,497	-31.4%	25,088	-8.4%	32,657	-29.7%
DADELAND NORTH	90,540	13,654	563.1%	132,894	-31.9%	95,200	-4.9%	138,951	-34.8%
DADELAND SOUTH	83,863	29,765	181.8%	162,416	-48.4%	90,122	-6.9%	168,591	-50.3%
DOUGLAS ROAD		16,914		82,141		20,847		87,560	
DR. MARTIN LUTHER KING, JR.	19,517	11,097	75.9%	27,980	-30.2%	22,343	-12.6%	27,098	-28.0%
EARLINGTON HEIGHTS	26,329	15,280	72.3%	40,697	-35.3%	28,185	-6.6%	39,397	-33.2%
GOVERNMENT CENTER	99,468	29,353	238.9%	243,414	-59.1%	105,902	-6.1%	247,724	-59.8%
HIALEAH	16,864	6,891	144.7%	29,516	-42.9%	20,621	-18.2%	31,324	-46.2%
MIAMI INTERNATIONAL AIRPORT	21,832	7,004	211.7%	46,115	-52.7%	23,381	-6.6%	45,530	-52.0%
NORTHSIDE	28,868	13,292	117.2%	36,127	-20.1%	31,878	-9.4%	35,010	-17.5%
OKEECHOBEE	15,596	5,986	160.5%	26,026	-40.1%	18,522	-15.8%	27,740	-43.8%
OVERTOWN / ARENA	21,285	6,980	204.9%	49,911	-57.4%	22,905	-7.1%	49,557	-57.0%
PALMETTO	17,706	5,674	212.1%	33,944	-47.8%	21,800	-18.8%	34,760	-49.1%
SANTA CLARA	13,363	4,713	183.5%	19,245	-30.6%	14,552	-8.2%	18,806	-28.9%
SOUTH MIAMI	30,325	9,361	224.0%	69,412	-56.3%	31,984	-5.2%	70,895	-57.2%
TRI-RAIL	19,144	12,638	51.5%	29,120	-34.3%	22,111	-13.4%	29,067	-34.1%
UNIVERSITY	23,132	5,488	321.5%	61,253	-62.2%	23,983	-3.5%	55,730	-58.5%
VIZCAYA	20,401	7,664	166.2%	32,497	-37.2%	21,493	-5.1%	33,805	-39.7%
TOTAL	827,414	287,803	187.5%	1,549,118	-46.6%	917,097	-9.8%	1,559,446	-46.9%

(*) Douglas Road Station was closed throughout the month of April 2021, due to construction.

METRORAIL CUMULATIVE PERCENTAGE RIDERSHIP SHARE



TOTAL MONTHLY AND AVERAGE WEEKDAY RIDERSHIP YEAR OVER YEAR COMPARISON CHARTS – METRORAIL



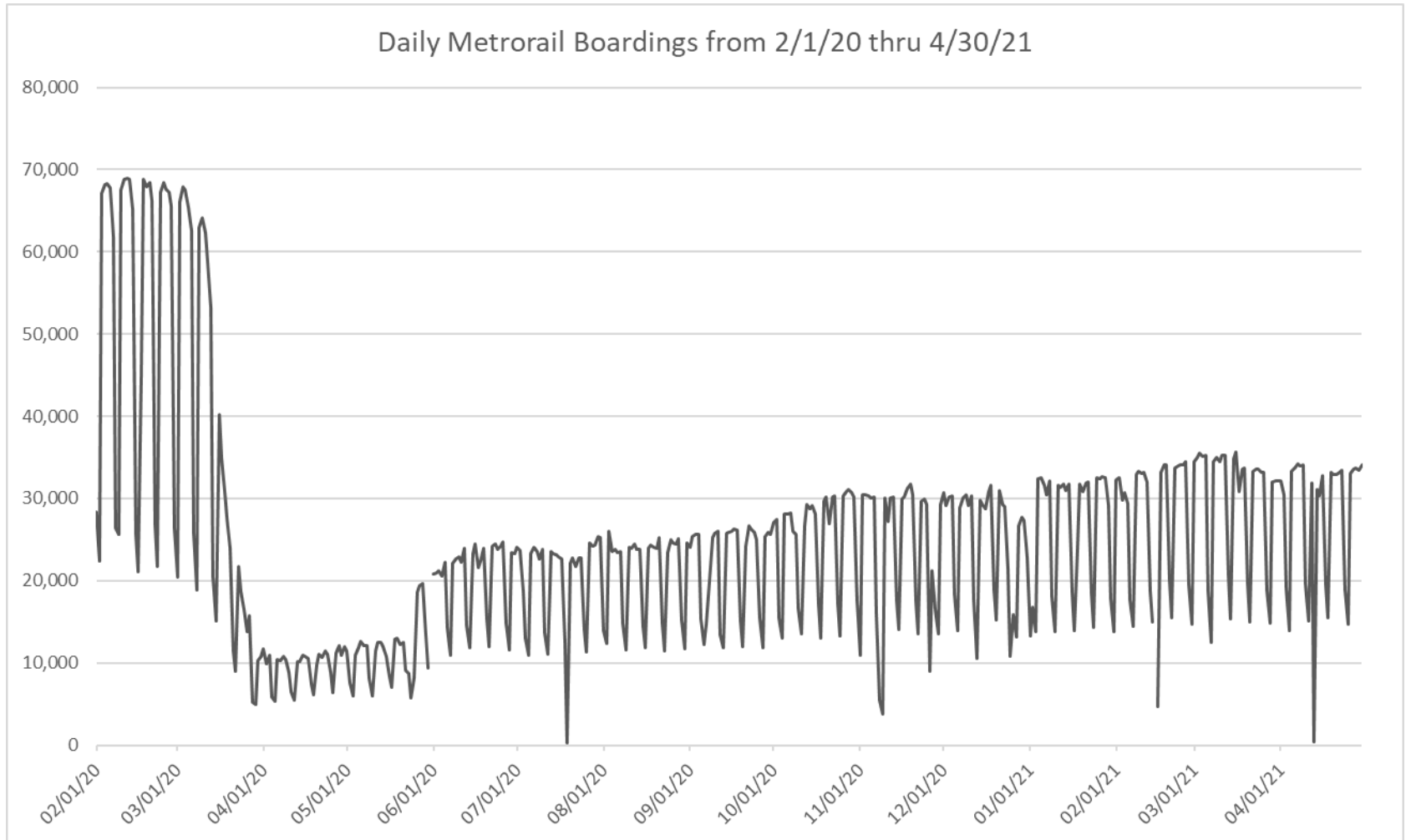
**“TOP 5 / BOTTOM 5” RAIL STATIONS AVERAGE WEEKDAY RIDERSHIP PERFORMANCE
YEAR OVER YEAR COMPARISONS**

Station	Apr-21	Apr-20	Absolute Delta (1)	Percent Delta
BRICKELL	4,386	758	3,629	479.0%
DADELAND NORTH	3,696	492	3,204	651.7%
GOVERNMENT CENTER	3,940	912	3,028	332.2%
DADELAND SOUTH	3,310	1,212	2,098	173.0%
CIVICCENTER	2,849	954	1,895	198.5%
TRI-RAIL	805	460	345	74.9%
SANTA CLARA	536	185	351	189.6%
Dr. MARTIN LUTHER KING, JR.	757	385	372	96.7%
BROWNSVILLE	701	327	375	114.7%
CULMER	899	472	427	90.5%

(1) Averages rounded to the nearest boarding.

(†) All Metrorail stations began reporting YOY gains in April 2021, as April 2020 was the second month showing clear reduction effects, the largest to-date, on ridership from the SARS-CoV-2 pandemic.

DAILY METRORAIL RIDERSHIP SINCE FEBRUARY 1, 2020



- (1) National Emergency was declared on 3/13/20 as a result of the SARS-CoV-2 pandemic.
- (2) There was no Metrobus, Metrorail and Metromover service on 5/31/20, as a safety precaution.
- (3) The dip at the start of the second week of November 2020 is due to Hurricane Eta; these are *raw data* from the Unleash Live contractor AI video system.
- (4) The dip on 4/13/21 is due to a loss of connectivity at all stations, affecting a few stations over the next two days as well.
- (5) Periodic (weekly) variations are prominent, since weekday ridership is almost always significantly higher than weekend or holiday ridership.

METRORAIL PARKING PATRONAGE SUMMARY April 2021

PARK-RIDE LOT	ACTUAL CAPACITY (1)	ACTUAL OCCUPANCY (2)	PERCENT OCCUPANCY
DADELAND SOUTH	1,280		
DADELAND NORTH	1,963		
SOUTH MIAMI	1,081		
UNIVERSITY	260		
DOUGLAS ROAD	150		
COCONUT GROVE	100		
VIZCAYA	120		
CULMER	40		
SANTA CLARA	61		
ALLAPATTAH	74		
EARLINGTON HEIGHTS	361		
BROWNSVILLE	100		
DR. MARTIN LUTHER KING JR. (MDT)	62		
DR. MARTIN LUTHER KING JR. (GARAGE)	631		
NORTHSIDE	197		
HIALEAH	338		
OKEECHOBEE	1,398		
PALMETTO	700		
TOTAL	8,916		

- (1) Number of spaces could vary each week; shown are available spaces during final week of month; the capacities shown here date from April 2020.
(2) Averages rounded to nearest unit; no counts effected in April 2021 due to reassignment of staff as result of SARS-CoV-2 pandemic.

Metromover



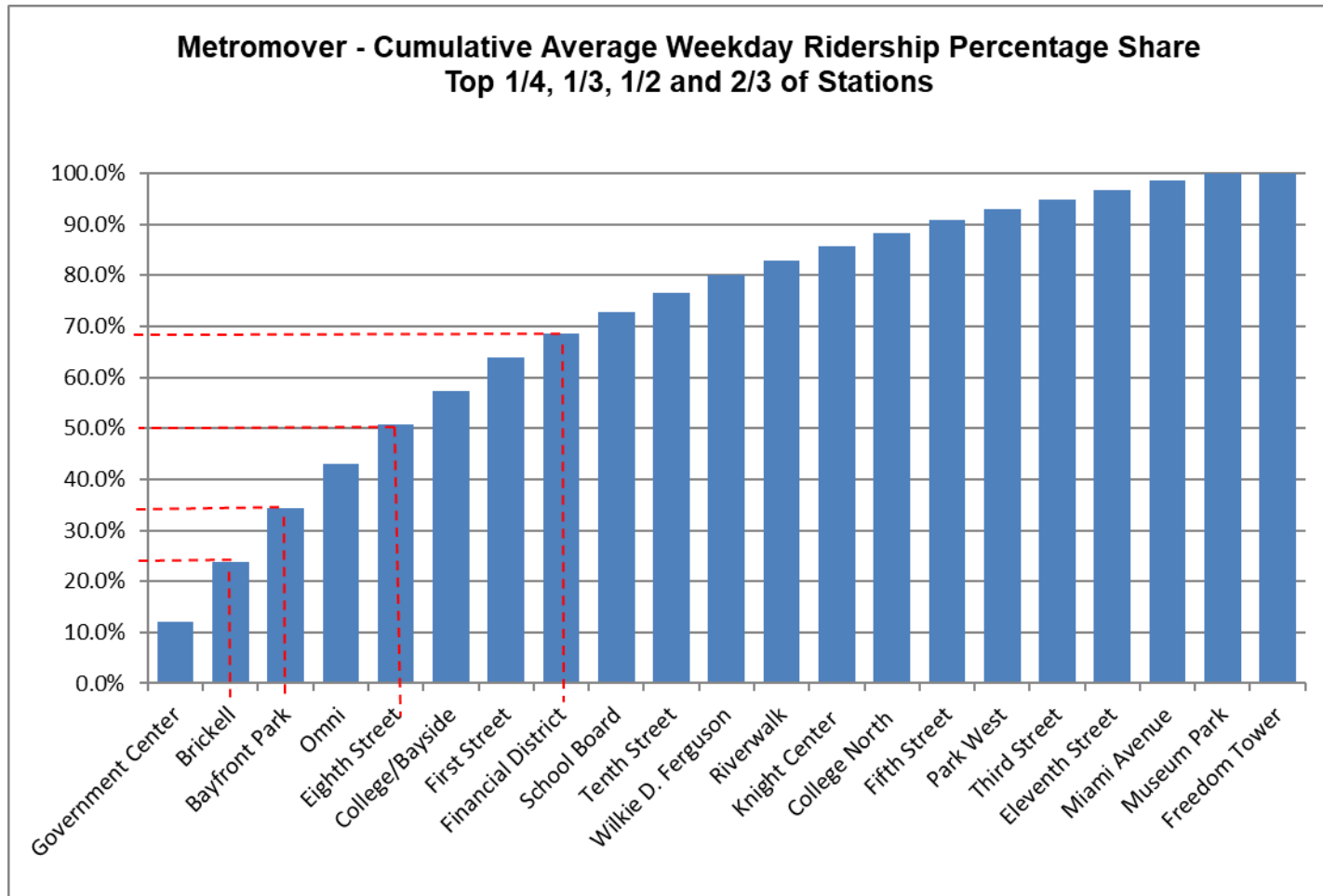
METROMOVER MONTHLY AND AVERAGE DAILY BOARDINGS BY STATION

	Average Weekday	Average Weekday	Percent Change	Average Saturday	Average Saturday	Percent Change	Average Sunday	Average Sunday	Percent Change	Total Monthly	Total Monthly	Percent Change
STATIONS	Apr-21	Apr-20	21 vs 20	Apr-21	Apr-20	21 vs 20	Apr-21	Apr-20	21 vs 20	Apr-21	Apr-20	21 vs 20
School Board	473	253	87.1%	452	212	113.2%	373	213	75.6%	13,706	7,258	88.8%
Omni	941	419	124.9%	904	400	125.8%	748	330	126.4%	27,314	12,129	125.2%
Museum Park	148	53	177.6%	227	57	300.4%	186	34	451.1%	4,917	1,538	219.7%
Eleventh Street	206	61	237.5%	147	57	156.8%	97	54	79.2%	5,515	1,790	208.1%
Park West	235	82	188.7%	191	77	149.2%	172	65	165.0%	6,634	2,361	181.0%
Freedom Tower (1)		114			84			51			3,040	
Government Center	1,327	789	68.2%	950	611	55.7%	839	503	66.8%	36,356	21,812	66.7%
Miami Avenue	206	167	23.0%	188	156	20.7%	152	114	33.6%	4,926	4,754	3.6%
Third Street	206	75	176.6%	153	41	274.2%	147	48	208.4%	5,741	1,996	187.6%
Knight Center	307	172	78.5%	177	146	21.4%	153	95	61.1%	8,078	4,750	70.1%
Bayfront Park	1,156	482	140.0%	1,087	400	171.9%	911	356	156.2%	33,421	13,616	145.5%
First Street	725	367	97.6%	621	274	126.7%	573	268	113.9%	20,718	10,234	102.4%
College/Bayside	728	209	248.4%	654	161	306.7%	535	148	262.3%	20,780	5,833	256.2%
College North	293	35	728.3%	186	17	1028.8%	130	20	559.5%	7,702	922	735.4%
Wilkie D. Ferguson	382	103	271.3%	310	59	426.8%	229	55	317.4%	10,555	2,717	288.5%
Riverwalk	321	100	220.6%	325	79	313.7%	264	60	339.2%	9,407	2,754	241.6%
Fifth Street	281	72	289.7%	245	47	421.3%	170	42	309.0%	7,848	1,942	304.1%
Eighth Street	853	155	448.8%	831	125	563.1%	688	114	501.8%	24,834	4,377	467.4%
Tenth Street	412	150	174.2%	343	107	220.6%	294	73	305.5%	10,564	4,024	162.5%
Brickell	1,304	663	96.6%	1,232	553	122.6%	1,054	488	116.1%	37,829	18,754	101.7%
Financial District	515	146	252.8%	365	101	263.4%	285	84	239.6%	13,927	3,948	252.8%
TOTAL	11,020	4,667	136.1%	9,586	3,761	154.9%	7,998	3,211	149.1%	310,772	130,549	138.1%

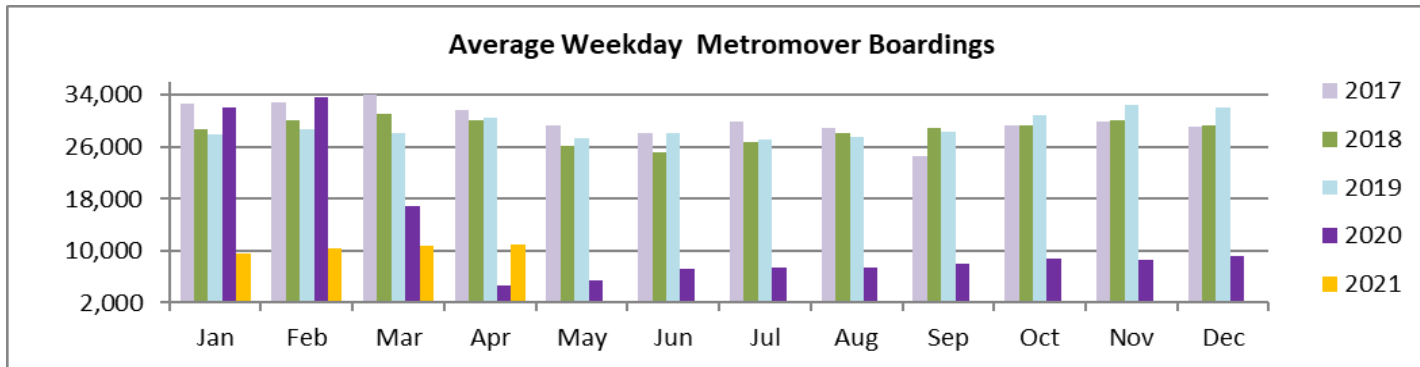
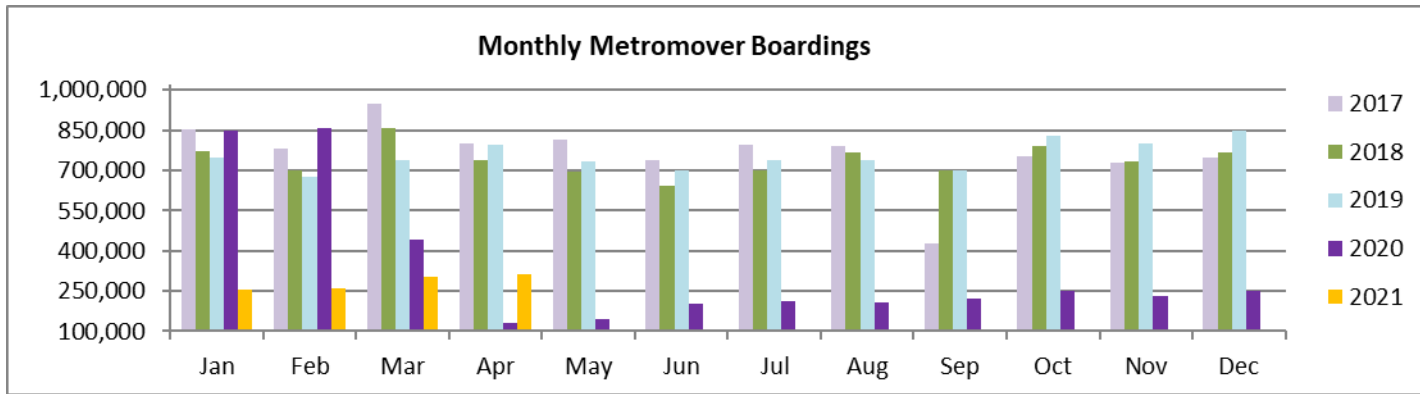
(1) Freedom Tower Station was closed for construction throughout April 2021.

(*) APC Vendor UTA's system did not report boardings data at several stations on several days in April 2021; the average daily ridership calculations take this into account.

METROMOVER CUMULATIVE PERCENTAGE RIDERSHIP SHARE



TOTAL MONTHLY AND AVERAGE WEEKDAY RIDERSHIP YEAR OVER YEAR COMPARISON CHARTS – METROMOVER



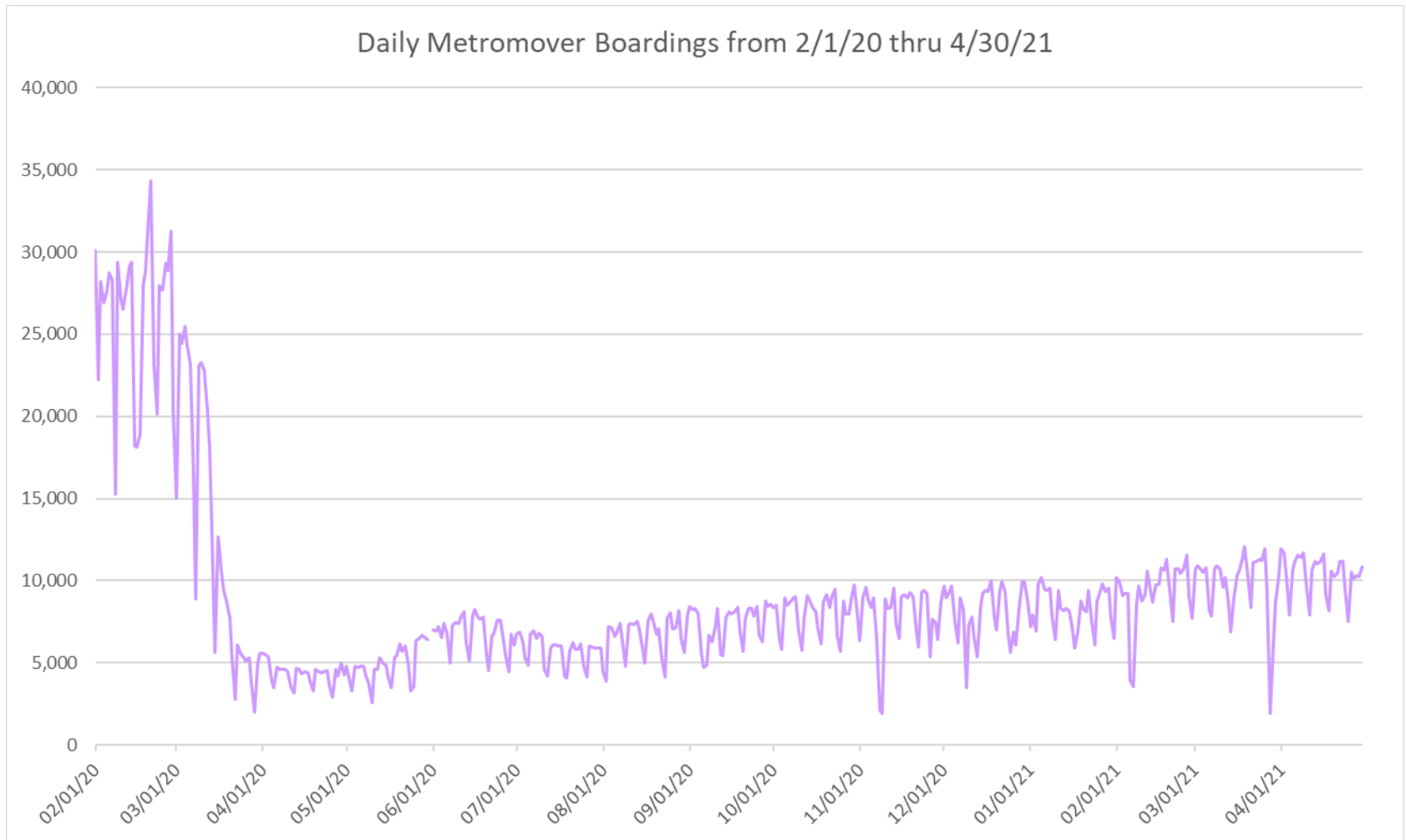
**“TOP 5 / BOTTOM 5” MOVER STATIONS AVERAGE WEEKDAY RIDERSHIP PERFORMANCE
YEAR OVER YEAR COMPARISONS**

Station	Apr-21	Apr-20	Absolute Delta (1)	Percent Delta
Eighth Street	853	155	697	448.8%
Bayfront Park	1,156	482	674	140.0%
Brickell	1,304	663	641	96.6%
Government Center	1,327	789	538	68.2%
Omni	941	419	523	124.9%
Miami Avenue	206	167	38	23.0%
Museum Park	148	53	95	177.6%
Third Street	206	75	132	176.6%
Knight Center	307	172	135	78.5%
Eleventh Street	206	61	145	237.5%

(1) Averages rounded to the nearest boarding.

(†) All Metromover stations began reporting YOY gains in April 2021, as April 2020 was the second month showing clear reduction effects, the largest to-date, on ridership from the SARS-CoV-2 pandemic.

DAILY METROMOVER RIDERSHIP SINCE FEBRUARY 1, 2020



- (1) National Emergency was declared on 3/13/20 as a result of the SARS-CoV-2 pandemic.
- (2) There was no Metrobus, Metrorail and Metromover service on 5/31/20, as a safety precaution.
- (3) The dip at the start of the second week of November 2020 is due to Hurricane Eta; these are *raw data* from the UTA contractor APC system.
- (4) Periodic (weekly) variations are prominent, since weekday ridership is almost always significantly higher than weekend or holiday ridership.

Special Transportation Services

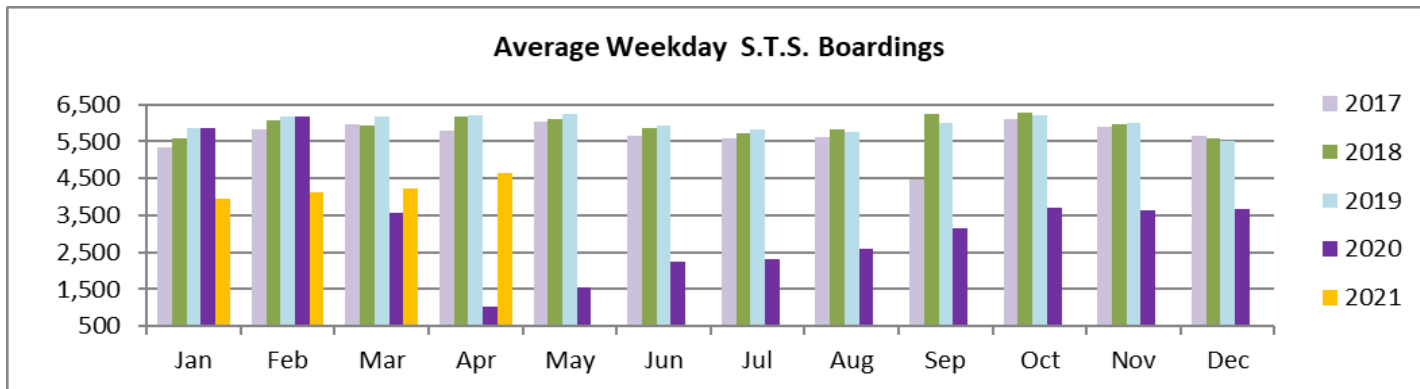
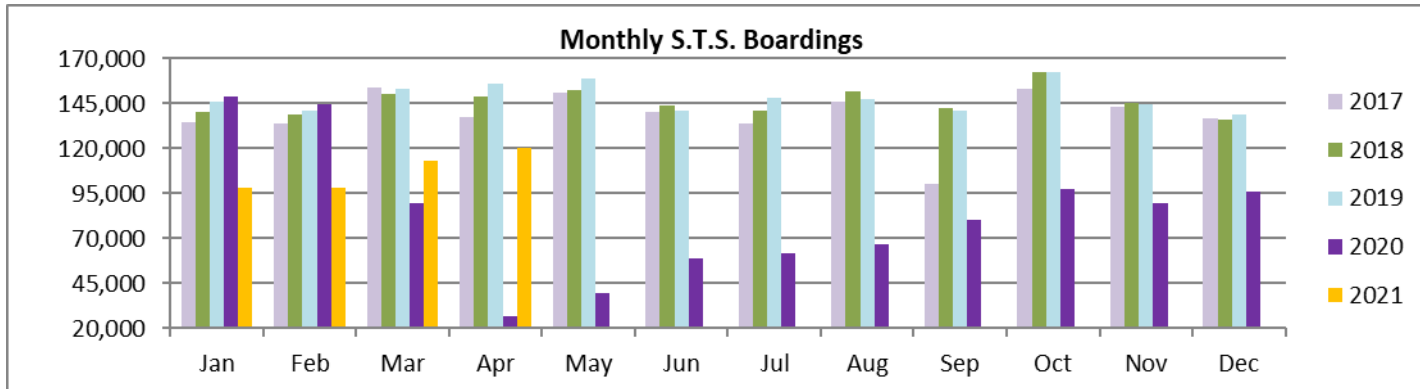


STS MONTHLY AND AVERAGE DAILY BOARDINGS April 2021

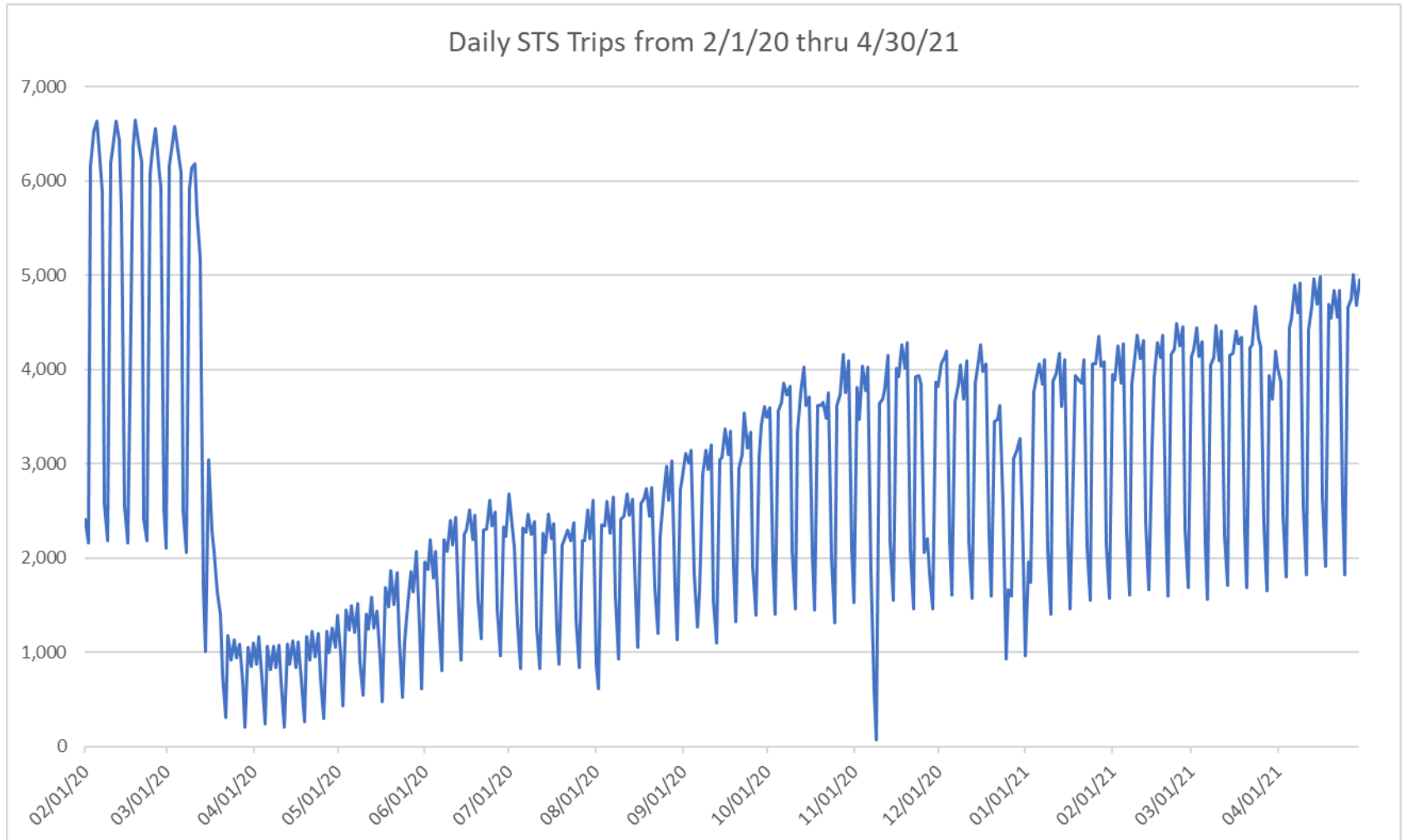
Measure	timeline	Ambulatory	Wheelchair	Total Clients (*)
Average Weekday	Apr-21	3,838	822	4,660
Average Saturday	Apr-21	2,109	453	2,561
Average Sunday	Apr-21	1,570	269	1,838
Total Monthly	Apr-21	99,153	20,969	120,122
Average Weekday	Apr-20	784	262	1,046
Average Saturday	Apr-20	524	188	712
Average Sunday	Apr-20	212	40	252
Total Monthly	Apr-20	20,192	6,685	26,877
Average Weekday	Apr-19	5,017	1,182	6,199
Average Saturday	Apr-19	2,002	577	2,579
Average Sunday	Apr-19	1,708	574	2,281
Total Monthly	Apr-19	125,202	30,606	155,808
% Change Current v.s. Apr 2020 Weekday		389.5%	213.3%	345.4%
% Change Current v.s. Apr 2020 Saturday		302.4%	140.5%	259.6%
% Change Current v.s. Apr 2020 Sunday		641.2%	571.3%	630.1%
% Change Current v.s. Apr 2020 Month Total		391.1%	213.7%	346.9%
% Change Current v.s. Apr 2019 Weekday		-23.5%	-30.5%	-24.8%
% Change Current v.s. Apr 2019 Saturday		5.3%	-21.6%	-0.7%
% Change Current v.s. Apr 2019 Sunday		-8.1%	-53.2%	-19.4%
% Change Current v.s. Apr 2019 Month Total		-20.8%	-31.5%	-22.9%

(*) Trip count data provided by STS contractor.

TOTAL MONTHLY AND AVERAGE WEEKDAY RIDERSHIP YEAR OVER YEAR COMPARISON CHARTS – SPECIAL TRANSPORTATION SERVICES (S.T.S.)

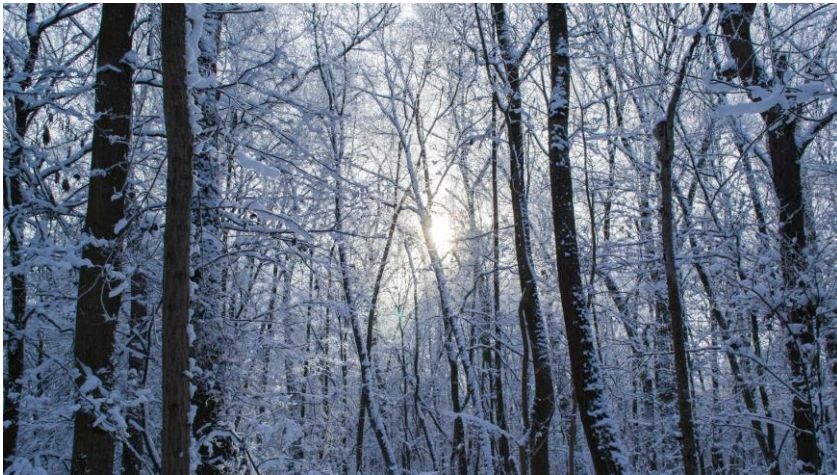


DAILY STS RIDERSHIP SINCE FEBRUARY 1, 2020

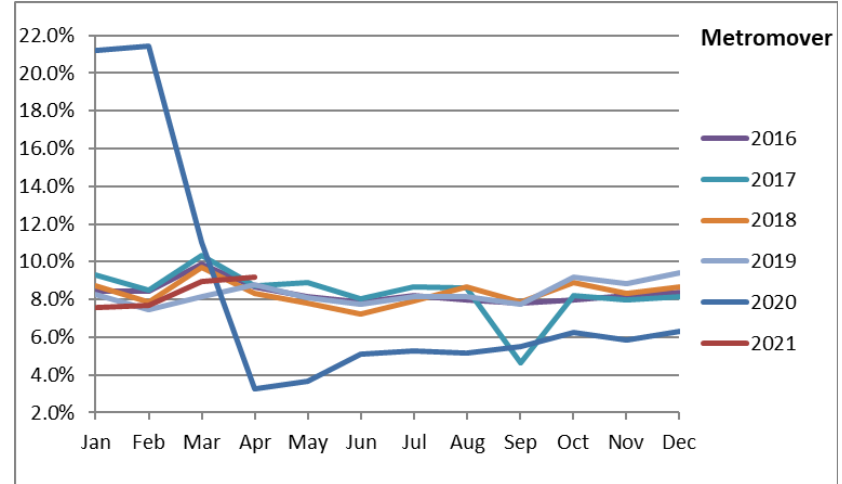
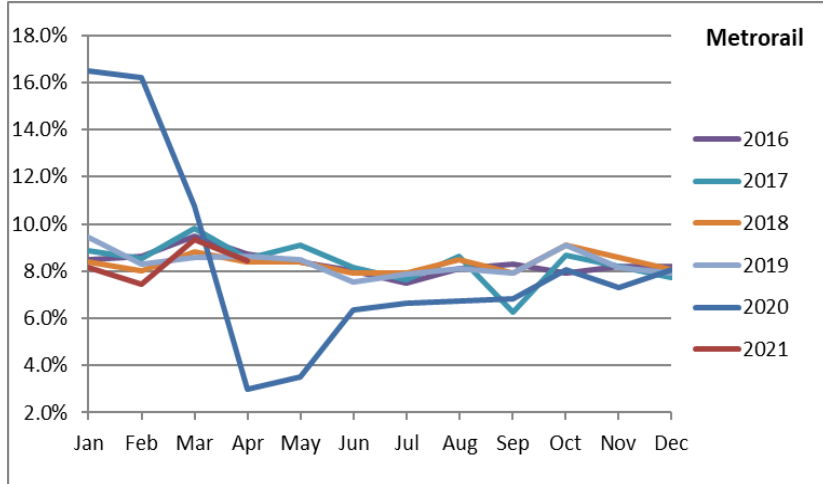
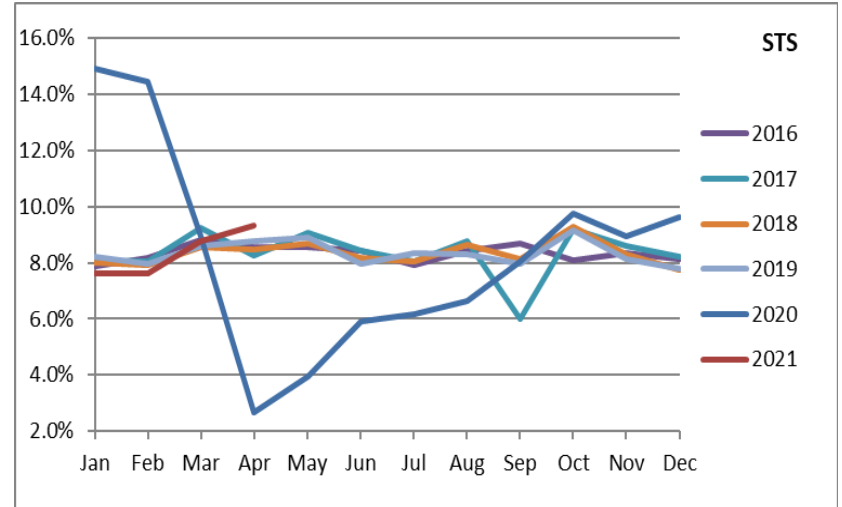
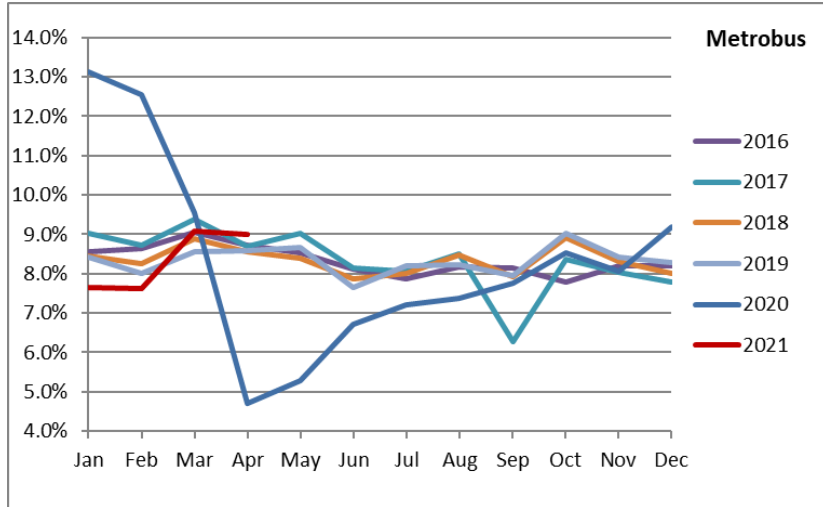


- (1) National Emergency was declared on 3/13/20 as a result of the SARS-CoV-2 pandemic.
- (2) The dip at the start of the second week of November 2020 is due to Hurricane Eta.
- (3) Periodic (weekly) variations are prominent, since weekday ridership is almost always significantly higher than weekend or holiday ridership.

Ridership Seasonality



RIDERSHIP SEASONALITY – PERCENT RIDERSHIP SHARE BY MONTH AND CALENDAR YEAR FOR EACH MODE



Note: the prominent dips seen in the fall of 2017 and beginning in the spring of 2020 are due to Hurricane Irma and the SARSCoV-2 pandemic, respectively.