



# TRANSPORTATION AND PUBLIC WORKS

## RIDERSHIP TECHNICAL REPORT

*Division of Performance and Materials Management*



# Table of Contents

<i>Table of Contents</i>	2-3
<b>All Modes Overview</b>	<b>4</b>
Total Monthly Weekday, Saturday and Sunday Monthly Boardings By Mode	5
Average Weekday, Saturday and Sunday Boardings by Mode	6
Metrobus Total Monthly Ridership Comparisons by Fiscal Year	7
Metrorail Total Monthly Ridership Comparisons by Fiscal Year	8
Metromover Total Monthly Ridership Comparisons by Fiscal Year	9
STS Total Monthly Ridership Comparisons by Fiscal Year	10
All-Modes Combined Total Monthly Ridership Comparisons By Fiscal Year	11
All Modes Combined Total Monthly and Average Weekday Ridership – Year over Year Comparison Charts	12
Average Weekday Ridership – Modal Splits	13
Daily Ridership for All Modes Combined since February 1, 2020	14
<b>Metrobus</b>	<b>15</b>
Metrobus Average Weekday Boardings by Route	16-18
Metrobus Average Saturday Boardings by Route	19-20
Metrobus Average Sunday Boardings by Route	21-22
Metrobus Monthly Total Boardings by Route	23-25
Metrobus Holiday Boardings by Route	26
Year-over-Year Bus Ridership by Route Service Type	27-28
Bus Routes as Ranked by Percentage of Average Weekday Ridership	29
Metrobus Cumulative Percentage Average Weekday Ridership Share by Route (Top 75%)	30
Total Monthly and Average Weekday Rail Ridership – Year over Year Comparison Charts	31
Bus “Top 5 / Bottom 5” Routes Average Weekday Ridership Performance	32
Daily Metrobus Ridership since February 1, 2020	33
Metrobus Parking Patronage Summary	34

## Table of Contents (continued)

<b>Metrorail</b>	<b>35</b>
Metrorail Average Weekday Boardings by Station	36
Metrorail Average Saturday Boardings by Station	37
Metrorail Average Sunday Boardings by Station	38
Metrorail Total Monthly Boardings by Station	39
Metrorail Holiday Boardings	40
Metrorail Cumulative Percentage Average Weekday Ridership Share	41
Total Monthly and Average Weekday Rail Ridership – Year over Year Comparison Charts	42
“Top 5 / Bottom 5” Stations Average Weekday Ridership Performance	43
Daily Metrorail Ridership since February 1, 2020	44
Metrorail Parking Patronage Summary	45
<b>Metromover</b>	<b>46</b>
Monthly and Average Daily Mover Boardings by Station	47
Metromover Cumulative Percentage Average Weekday Ridership Share	48
Total Monthly and Average Weekday Mover Ridership – Year over Year Comparison Charts	49
“Top 5 / Bottom 5” Stations Average Weekday Ridership Performance	50
Daily Metromover Ridership since February 1, 2020	51
<b>Special Transportation Services (STS)</b>	<b>52</b>
STS Monthly and Average Daily Boardings	53
Total Monthly and Average Weekday STS Ridership – Year over Year Comparison Charts	54
Daily STS Ridership since February 1, 2020	55
<b>Ridership Seasonality</b>	<b>56</b>
Ridership Seasonality – Percent Ridership Share by Month and Calendar year for Each Mode	57

# All Modes Overview



## TOTAL MONTHLY WEEKDAY, SATURDAY AND SUNDAY BOARDINGS BY MODE July 2021

TRAVEL MODE	MONTH'S TOTAL WEEKDAYS RIDERSHIP	MONTH'S TOTAL SATURDAYS RIDERSHIP	MONTH'S TOTAL SUNDAYS RIDERSHIP	TOTAL MONTHLY RIDERSHIP	% CHANGE vs Jul 2020 TOTAL MONTH RIDERSHIP
<b>METROBUS</b> (1)	2,189,311	331,947	248,649	2,769,907	17.0%
<b>METRORAIL</b> (2)	597,257	69,440	55,462	722,159	14.1%
<b>METROMOVER</b> (3)	270,403	53,565	44,879	368,847	75.1%
<b>STS PARATRANSIT</b> (4)	90,957	10,899	8,203	110,059	78.2%
<b>TOTAL</b>	<b>3,147,928</b>	<b>465,851</b>	<b>357,193</b>	<b>3,970,972</b>	<b>21.4%</b>

(\*) July 5, 2021 (Independence Day Holiday - observed) ridership was as follows:

Metrobus	53,814
Metrail	13,278
Metromover	8,339
STS	1,758

- (1) Metrobus fares resumed on June 1, 2021, following a 14-month period of fare-free rides as a result of the SARS-CoV-2 pandemic. The NextFare System farebox data replaced the bus automatic passenger counter data as ridership data of record starting on that date.
- (2) Metrorail fares resumed on June 1, 2021, following a 14-month period of fare-free rides as a result of the SARS-CoV-2 pandemic. The NextFare System faregate data replaced the video data as ridership data of record starting on that date.
- (3) Beginning March 13, 2020 (day of National Emergency Declaration due to SARS-CoV-2 pandemic), only raw data from Metromover automatic passenger counters is reported; no estimates are performed after March 13, 2020.
- (4) Paratransit ridership data as reported by the contractor.

**AVERAGE WEEKDAY, SATURDAY AND SUNDAY BOARDINGS BY MODE  
July 2021**

<b>Travel Mode</b>	<b>Average Weekday</b>	<b>Average Saturday</b>	<b>Average Sunday (*)</b>	<b>% Change Jul 2020 Weekday</b>	<b>% Change Jul 2020 Saturday</b>	<b>% Change Jul 2020 Sunday</b>
<b>METROBUS</b>	104,317	66,397	49,731	22.6%	19.0%	6.0%
<b>METRORAIL</b>	28,441	13,888	10,546	21.1%	4.4%	-5.3%
<b>METROMOVER</b>	13,049	10,988	9,255	77.7%	95.7%	82.1%
<b>STS PARATRANSIT</b>	4,331	2,180	1,641	87.5%	65.1%	95.3%
<b>Totals</b>	<b>150,139</b>	<b>93,453</b>	<b>71,172</b>	<b>27.0%</b>	<b>22.9%</b>	<b>11.3%</b>

(\*) Average Sunday ridership includes Independence Day (observed) for Metrobus and STS but excludes it for Metrorail and Metromover.

(\*\*) Average ridership is calculated and published only for those days and stations with nontrivial amounts of reported data.

## METROBUS TOTAL MONTHLY RIDERSHIP COMPARISONS BY FISCAL YEAR

<b>Bus</b>	<b>FY 17</b>	<b>FY 18</b>	<b>Variance 17 to 18</b>	<b>FY 19</b>	<b>Variance 18 to 19</b>	<b>FY 20</b>	<b>Variance 19 to 20</b>	<b>FY 21</b>	<b>Variance 20 to 21</b>	<b>Variance 17 to 21</b>
<b>Oct</b>	4,925,781	4,709,590	-4.4%	4,554,886	-3.3%	4,507,012	-1.1%	2,805,139	-37.8%	-43.1%
<b>Nov</b>	5,181,524	4,522,250	-12.7%	4,245,535	-6.1%	4,197,225	-1.1%	2,651,290	-36.8%	-48.8%
<b>Dec</b>	5,192,692	4,380,099	-15.6%	4,081,581	-6.8%	4,126,990	1.1%	3,022,530	-26.8%	-41.8%
<b>Jan</b>	5,084,085	4,307,001	-15.3%	4,195,911	-2.6%	4,316,998	2.9%	3,082,746	-28.6%	-39.4%
<b>Feb</b>	4,914,307	4,208,811	-14.4%	3,994,019	-5.1%	4,123,083	3.2%	3,076,966	-25.4%	-37.4%
<b>Mar</b>	5,287,813	4,534,564	-14.2%	4,266,768	-5.9%	3,136,162	-26.5%	3,660,639	16.7%	-30.8%
<b>Apr</b>	4,895,697	4,360,997	-10.9%	4,291,135	-1.6%	1,544,316	-64.0%	3,625,048	134.7%	-26.0%
<b>May</b>	5,087,877	4,277,628	-15.9%	4,330,922	1.2%	1,734,609	-59.9%	3,683,343	112.3%	-27.6%
<b>Jun</b>	4,586,556	4,009,340	-12.6%	3,823,863	-4.6%	2,210,725	-42.2%	2,672,570	20.9%	-41.7%
<b>Jul</b>	4,539,259	4,080,664	-10.1%	4,094,906	0.3%	2,366,749	-42.2%	2,769,907	17.0%	-39.0%
<b>Aug</b>	4,780,589	4,326,980	-9.5%	4,109,613	-5.0%	2,422,014	-41.1%			
<b>Sep</b>	3,524,818	4,041,992	14.7%	3,971,220	-1.8%	2,546,923	-35.9%			
<b>FY Total</b>	<b>58,000,998</b>	<b>51,759,916</b>	<b>-10.8%</b>	<b>49,960,359</b>	<b>-3.5%</b>	<b>37,232,806</b>	<b>-25.5%</b>			

## METRORAIL TOTAL MONTHLY RIDERSHIP COMPARISONS BY FISCAL YEAR

Rail	FY 17		Variance	FY 19		FY 20		FY 21	Variance	Variance
			17 to 18		18 to 19		19 to 20		20 to 21	17 to 21
<b>Oct</b>	1,670,933	1,708,564	2.3%	1,757,225	2.8%	1,643,166	-6.5%	769,525	-53.2%	-53.9%
<b>Nov</b>	1,734,267	1,609,888	-7.2%	1,656,929	2.9%	1,469,448	-11.3%	699,492	-52.4%	-59.7%
<b>Dec</b>	1,734,768	1,517,341	-12.5%	1,553,804	2.4%	1,433,928	-7.7%	769,194	-46.4%	-55.7%
<b>Jan</b>	1,743,638	1,615,576	-7.3%	1,708,695	5.8%	1,576,340	-7.7%	799,119	-49.3%	-54.2%
<b>Feb</b>	1,676,215	1,545,581	-7.8%	1,501,458	-2.9%	1,549,118	3.2%	730,792	-52.8%	-56.4%
<b>Mar</b>	1,926,434	1,700,714	-11.7%	1,554,851	-8.6%	1,027,319	-33.9%	917,097	-10.7%	-52.4%
<b>Apr</b>	1,677,459	1,619,890	-3.4%	1,559,446	-3.7%	287,803	-81.5%	827,414	187.5%	-50.7%
<b>May</b>	1,787,885	1,618,504	-9.5%	1,531,597	-5.4%	337,696	-78.0%	887,111	162.7%	-50.4%
<b>Jun</b>	1,605,234	1,524,311	-5.0%	1,359,966	-10.8%	608,758	-55.2%	723,469	18.8%	-54.9%
<b>Jul</b>	1,500,243	1,527,380	1.8%	1,419,158	-7.1%	632,964	-55.4%	722,159	14.1%	-51.9%
<b>Aug</b>	1,693,524	1,632,471	-3.6%	1,463,646	-10.3%	641,275	-56.2%			
<b>Sep</b>	1,234,135	1,530,088	24.0%	1,427,726	-6.7%	654,244	-54.2%			
<b>Total</b>	<b>19,984,735</b>	<b>19,150,308</b>	<b>-4.2%</b>	<b>18,494,501</b>	<b>-3.4%</b>	<b>11,862,059</b>	<b>-35.9%</b>			



## METROMOVER TOTAL MONTHLY RIDERSHIP COMPARISONS BY FISCAL YEAR

<b>Mover</b>	<b>FY 17</b>	<b>FY 18</b>	<b>Variance 17 to 18</b>	<b>FY 19</b>	<b>Variance 18 to 19</b>	<b>FY 20</b>	<b>Variance 19 to 20</b>	<b>FY 21</b>	<b>Variance 20 to 21</b>	<b>Variance 17 to 21</b>
<b>Oct</b>	814,781	751,323	-7.8%	790,533	5.2%	831,234	5.1%	250,044	-69.9%	-69.3%
<b>Nov</b>	841,679	729,519	-13.3%	735,198	0.8%	799,632	8.8%	232,422	-70.9%	-72.4%
<b>Dec</b>	858,961	748,797	-12.8%	767,239	2.5%	849,832	10.8%	251,019	-70.5%	-70.8%
<b>Jan</b>	852,788	772,122	-9.5%	746,728	-3.3%	847,773	13.5%	255,968	-69.8%	-70.0%
<b>Feb</b>	780,514	698,107	-10.6%	675,160	-3.3%	855,398	26.7%	260,332	-69.6%	-66.6%
<b>Mar</b>	949,045	859,143	-9.5%	737,814	-14.1%	441,200	-40.2%	302,502	-31.4%	-68.1%
<b>Apr</b>	802,778	740,036	-7.8%	795,696	7.5%	130,549	-83.6%	310,772	138.1%	-61.3%
<b>May</b>	814,791	694,106	-14.8%	734,645	5.8%	146,454	-80.1%	292,922	100.0%	-64.0%
<b>Jun</b>	737,042	641,675	-12.9%	701,318	9.3%	203,637	-71.0%	286,145	40.5%	-61.2%
<b>Jul</b>	796,649	700,462	-12.1%	739,814	5.6%	210,596	-71.5%	368,847	75.1%	-53.7%
<b>Aug</b>	788,734	768,728	-2.5%	739,785	-3.8%	205,995	-72.2%			
<b>Sep</b>	425,641	698,505	64.1%	699,879	0.2%	219,696	-68.6%			
<b>Total</b>	<b>9,463,403</b>	<b>8,802,523</b>	<b>-7.0%</b>	<b>8,863,809</b>	<b>0.7%</b>	<b>5,741,996</b>	<b>-35.2%</b>			

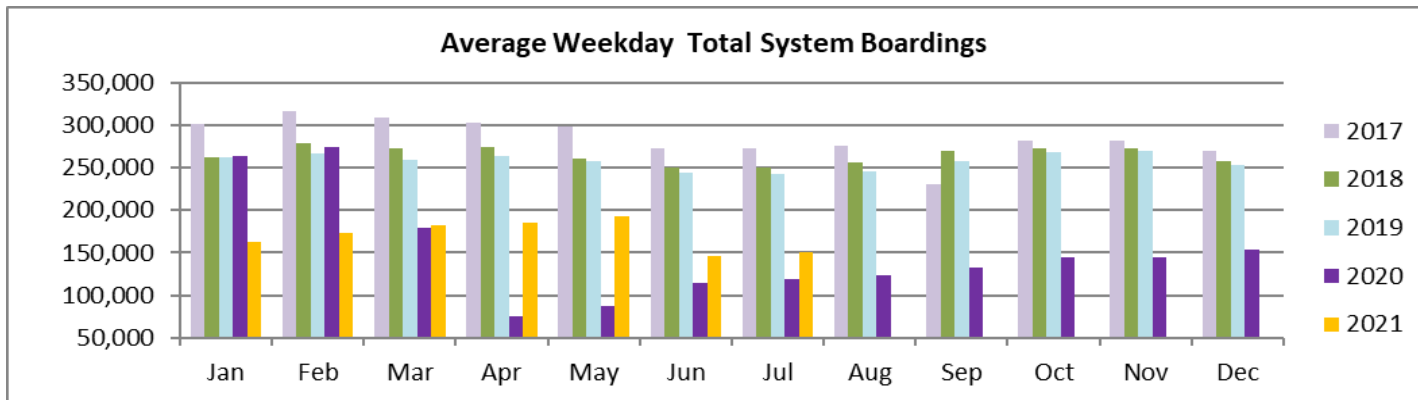
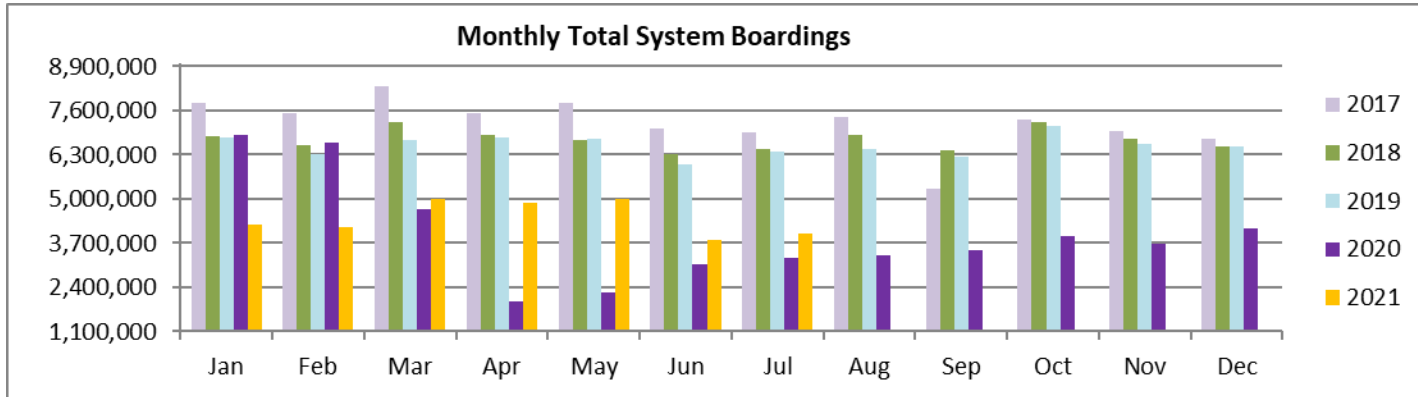
## SPECIAL TRANSPORTATION SERVICES (STS) TOTAL MONTHLY RIDERSHIP COMPARISONS BY FISCAL YEAR

<b>STS</b>	<b>FY 17</b>	<b>FY 18</b>	<b>Variance 17 to 18</b>	<b>FY 19</b>	<b>Variance 18 to 19</b>	<b>FY 20</b>	<b>Variance 19 to 20</b>	<b>FY 21</b>	<b>Variance 20 to 21</b>	<b>Variance 17 to 21</b>
<b>Oct</b>	132,211	153,409	16.0%	162,564	6.0%	162,704	0.1%	97,388	-40.1%	-26.3%
<b>Nov</b>	137,030	143,375	4.6%	145,653	1.6%	144,366	-0.9%	89,387	-38.1%	-34.8%
<b>Dec</b>	133,439	136,955	2.6%	136,110	-0.6%	138,642	1.9%	96,366	-30.5%	-27.8%
<b>Jan</b>	134,273	140,042	4.3%	146,268	4.4%	149,114	1.9%	97,928	-34.3%	-27.1%
<b>Feb</b>	134,089	139,032	3.7%	141,396	1.7%	144,392	2.1%	98,285	-31.9%	-26.7%
<b>Mar</b>	153,790	150,384	-2.2%	153,191	1.9%	89,634	-41.5%	112,930	26.0%	-26.6%
<b>Apr</b>	137,217	148,879	8.5%	155,808	4.7%	26,877	-82.7%	120,122	346.9%	-12.5%
<b>May</b>	151,138	152,164	0.7%	158,665	4.3%	39,654	-75.0%	118,636	199.2%	-21.5%
<b>Jun</b>	140,623	143,653	2.2%	141,320	-1.6%	59,093	-58.2%	112,397	90.2%	-20.1%
<b>Jul</b>	133,656	141,020	5.5%	148,232	5.1%	61,765	-58.3%	110,059	78.2%	-17.7%
<b>Aug</b>	145,760	151,750	4.1%	147,331	-2.9%	66,563	-54.8%			
<b>Sep</b>	100,010	142,360	42.3%	141,387	-0.7%	80,346	-43.2%			
<b>Total</b>	<b>1,633,236</b>	<b>1,743,023</b>	<b>6.7%</b>	<b>1,777,925</b>	<b>2.0%</b>	<b>1,163,150</b>	<b>-34.6%</b>			

## ALL-MODES COMBINED TOTAL MONTHLY RIDERSHIP COMPARISONS BY FISCAL YEAR

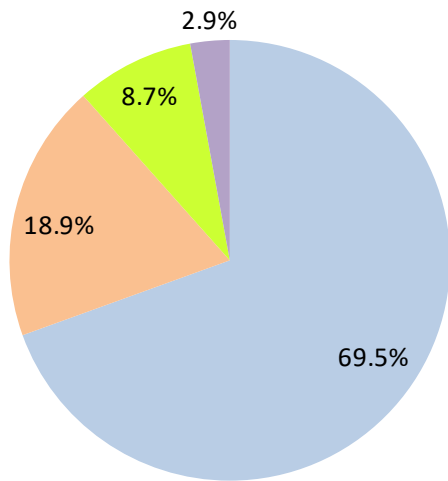
All Modes Month	Boardings					Variances				
	FY 17	FY 18	FY 19	FY 20	FY 21	17 TO 18	18 TO 19	19 TO 20	20 TO 21	17 TO 21
<b>Oct</b>	7,543,706	7,322,886	7,265,208	7,144,116	3,922,096	-2.9%	-0.8%	-1.7%	-45.1%	-48.0%
<b>Nov</b>	7,894,500	7,005,032	6,783,315	6,610,671	3,672,591	-11.3%	-3.2%	-2.5%	-44.4%	-53.5%
<b>Dec</b>	7,919,860	6,783,192	6,538,734	6,549,392	4,139,109	-14.4%	-3.6%	0.2%	-36.8%	-47.7%
<b>Jan</b>	7,814,784	6,834,741	6,797,602	6,890,225	4,235,761	-12.5%	-0.5%	1.4%	-38.5%	-45.8%
<b>Feb</b>	7,505,125	6,591,531	6,312,033	6,671,991	4,166,375	-12.2%	-4.2%	5.7%	-37.6%	-44.5%
<b>Mar</b>	8,317,082	7,244,805	6,712,624	4,694,315	4,993,168	-12.9%	-7.3%	-30.1%	6.4%	-40.0%
<b>Apr</b>	7,513,151	6,869,802	6,802,085	1,989,545	4,883,356	-8.6%	-1.0%	-70.8%	145.5%	-35.0%
<b>May</b>	7,841,691	6,742,402	6,755,829	2,258,413	4,982,012	-14.0%	0.2%	-66.6%	120.6%	-36.5%
<b>Jun</b>	7,069,455	6,318,979	6,026,467	3,082,213	3,794,581	-10.6%	-4.6%	-48.9%	23.1%	-46.3%
<b>Jul</b>	6,969,807	6,449,526	6,402,110	3,272,074	3,970,972	-7.5%	-0.7%	-48.9%	21.4%	-43.0%
<b>Aug</b>	7,408,607	6,879,929	6,460,375	3,335,847		-7.1%	-6.1%	-48.4%		
<b>Sep</b>	5,284,604	6,412,945	6,240,212	3,501,209		21.4%	-2.7%	-43.9%		
<b>FY Total</b>	<b>89,082,372</b>	<b>81,455,770</b>	<b>79,096,594</b>	<b>56,000,011</b>		<b>-8.6%</b>	<b>-2.9%</b>	<b>-29.2%</b>		

## TOTAL MONTHLY AND AVERAGE WEEKDAY RIDERSHIP YEAR OVER YEAR COMPARISON CHARTS – ALL MODES COMBINED



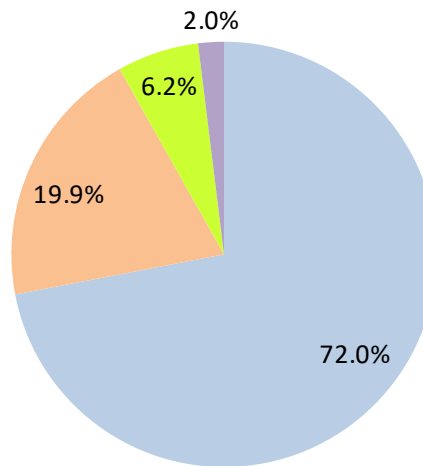
# AVERAGE WEEKDAY RIDERSHIP - MODAL SPLITS

July 2021



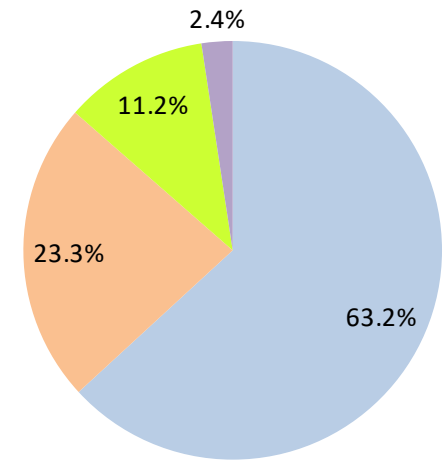
boardings

July 2020



boardings

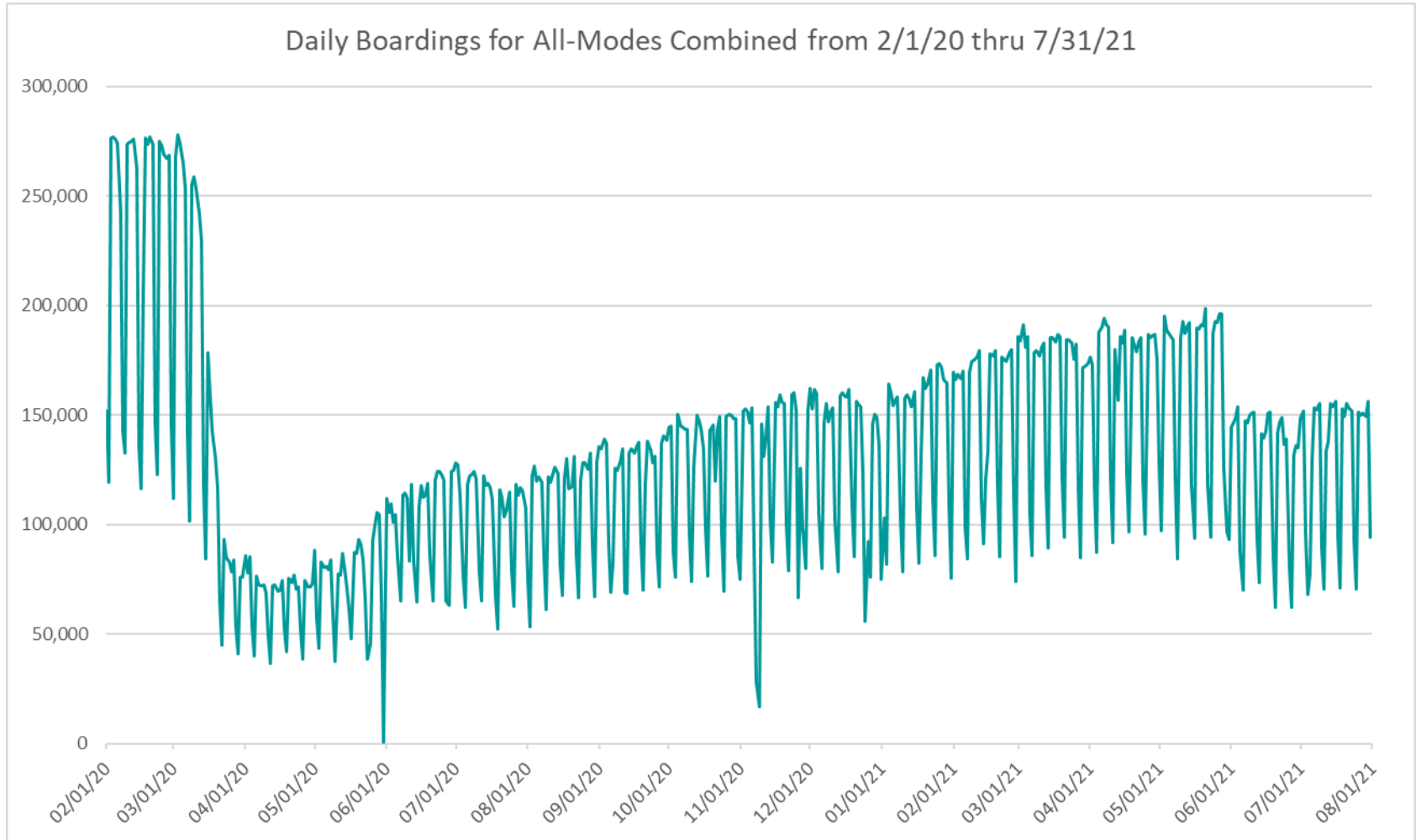
July 2019



boardings



## DAILY RIDERSHIP FOR ALL MODES COMBINED SINCE FEBRUARY 1, 2020



- (1) National Emergency was declared on 3/13/20 as a result of the SARS-CoV-2 pandemic.
- (2) There was no Metrobus, Metrorail and Metromover service on 5/31/20, as a safety precaution.
- (3) The dip at the start of the second week of November 2020 is due to Hurricane Eta.
- (4) The reduction seen beginning 6/1/21 is partly due to the resumption of fares for bus and rail, and partly the result of having resumed reporting Cubic farebox data rather than bus APC counts, as well as Cubic rail faregate counts instead of video camera counts on that date.
- (5) Periodic (weekly) variations are prominent, since weekday ridership is almost always significantly higher than weekend or holiday ridership.

# Metrobus



## METROBUS AVERAGE WEEKDAY BOARDINGS BY ROUTE (†)

Route <i>weekdays</i>	Average Weekday	Average Weekday	Percent Change	Average Weekday	Percent Change	Average Weekday	Percent Change	Average Weekday	Percent Change
	Jul-21	Jul-20	YOY	Feb-20	Current vs Feb-20	Jun-21	MOM	Jul-19	YO2Y
1 (*)	143	151	-5.2%	184	-22.1%	142	1.2%	306	-53.1%
2	1,874	1,458	28.5%	3,102	-39.6%	1,731	8.2%	2,191	-14.5%
3	3,828	2,894	32.3%	5,137	-25.5%	4,063	-5.8%	4,710	-18.7%
7	2,095	1,654	26.7%	3,501	-40.2%	2,145	-2.3%	3,009	-30.4%
8	3,207	2,284	40.4%	3,909	-18.0%	3,192	0.5%	3,563	-10.0%
9	4,419	3,324	33.0%	5,528	-20.1%	4,173	5.9%	4,936	-10.5%
10	1,267	792	60.0%	2,482	-48.9%	1,254	1.1%	1,976	-35.9%
11	5,589	4,055	37.8%	7,292	-23.4%	5,338	4.7%	6,758	-17.3%
12	1,610	1,423	13.2%	2,779	-42.1%	1,504	7.1%	2,568	-37.3%
16	1,115	816	36.6%	1,862	-40.1%	950	17.3%	1,616	-31.0%
17	2,164	2,118	2.2%	3,878	-44.2%	2,008	7.8%	3,357	-35.5%
19	750	634	18.4%	1,542	-51.4%	674	11.3%	1,277	-41.3%
21	1,112	1,393	-20.1%	1,817	-38.8%	882	26.1%	1,755	-36.7%
22	2,049	1,633	25.5%	3,640	-43.7%	1,946	5.3%	3,260	-37.1%
24 - Coral Way Limited	843	977	-13.7%	1,340	-37.1%	829	1.7%	1,742	-51.6%
27	4,345	3,350	29.7%	6,972	-37.7%	4,125	5.3%	6,265	-30.6%
29 (*)	292	229	27.7%	534	-45.3%	317	-7.7%	591	-50.6%
31 - BUSWAY LOCAL	537	488	10.0%	1,089	-50.8%	521	2.9%	995	-46.1%
32	1,326	1,348	-1.7%	2,390	-44.5%	1,197	10.8%	2,239	-40.8%
33	942	576	63.6%	1,687	-44.1%	850	10.9%	1,482	-36.4%
34 EXPRESS (*)	1,028	584	76.0%	2,008	-48.8%	938	9.6%	1,758	-41.5%
35	1,056	1,349	-21.8%	2,421	-56.4%	1,366	-22.7%	2,199	-52.0%
36	1,598	1,504	6.3%	2,536	-37.0%	1,305	22.5%	2,323	-31.2%
37	2,291	1,771	29.3%	3,273	-30.0%	2,142	6.9%	3,137	-27.0%
38	3,344	3,397	-1.5%	6,361	-47.4%	3,102	7.8%	6,013	-44.4%
39 EXPRESS	161	99	62.2%	893	-82.0%	270	-40.4%	826	-80.5%
40	1,014	863	17.5%	1,772	-42.8%	967	4.8%	1,597	-36.5%
42	569	466	22.1%	820	-30.6%	531	7.3%	800	-28.9%
46 - LIBERTY CITY CONN. (*)	13	14	-1.7%	41	-67.4%	14	-1.6%	23	-43.4%
51 - FLAGLER MAX	2,095	1,403	49.3%	3,109	-32.6%	1,904	10.0%	2,866	-26.9%
52	666	601	10.8%	1,261	-47.2%	648	2.9%	1,184	-43.7%
54	1,827	2,142	-14.7%	2,940	-37.9%	1,712	6.7%	2,781	-34.3%
55 MARLINS SHUTTLE								64	
56 (*)	212	130	63.0%	354	-40.0%	191	11.2%	341	-37.9%
57 (*)	307	213	44.4%	433	-29.2%	293	4.8%	392	-21.7%
62	1,081	1,380	-21.6%	1,815	-40.4%	1,037	4.3%	1,714	-36.9%
71 (*)	378	319	18.3%	711	-46.9%	404	-6.6%	548	-31.1%
72 (*)	397	348	14.2%	781	-49.2%	387	2.7%	686	-42.1%

(†) In this table and those which follow, "YOY" stands for "year-over-year", "MOM" for "month-over-month" and "YO2Y" for "year over two years", i.e., current month vs 12 months prior, one month prior, and 24 months prior, respectively.

(\*) Contracted routes

(\*\*) Due to effects from the SARS-CoV-2 pandemic; rides were fare-free beginning March 22, 2020; fares were reinstated on June 1, 2021, in part accounting for the drop in ridership from May 2021.



## METROBUS AVERAGE WEEKDAY BOARDINGS BY ROUTE

Route <i>weekdays</i>	Average Weekday	Average Weekday	Percent Change	Average Weekday	Percent Change	Average Weekday	Percent Change	Average Weekday	Percent Change
	Jul-21	Jul-20	YOY	Feb-20	Current vs Feb-20	Jun-21	MOM	Jul-19	YO2Y
73	1,384	834	66.0%	2,124	-34.9%	1,317	5.1%	1,969	-29.7%
75	737	657	12.1%	1,429	-48.4%	642	14.9%	1,209	-39.0%
77	5,178	3,819	35.6%	7,129	-27.4%	4,689	10.4%	6,865	-24.6%
79				361				335	
82 - WESTCHESTER CIRC. (*)	27	26	5.6%	62	-55.9%	27	2.3%	49	-44.9%
87	950	646	47.1%	1,499	-36.7%	964	-1.5%	1,447	-34.4%
88	1,747	1,136	53.7%	2,076	-15.9%	1,579	10.7%	1,942	-10.0%
93 - BISCAYNE MAX	1,749	1,433	22.1%	3,334	-47.6%	1,431	22.2%	3,050	-42.7%
95 EXPRESS (*)	589	287	105.0%	1,690	-65.1%	528	11.6%	1,757	-66.5%
99	872	836	4.4%	1,473	-40.8%	882	-1.0%	1,330	-34.4%
101 - A (*)	141	88	59.3%	177	-20.5%	132	6.3%	154	-8.9%
102 - B	1,264	754	67.7%	1,778	-28.9%	1,212	4.3%	1,516	-16.6%
103 - C	223	118	89.8%	463	-51.8%	182	22.7%	409	-45.4%
104	477	211	126.4%	837	-43.1%	487	-2.2%	751	-36.5%
105 - E	850	641	32.5%	1,287	-34.0%	796	6.7%	1,104	-23.0%
107 - G	988	850	16.3%	1,713	-42.3%	992	-0.4%	1,509	-34.5%
108 - H	273	249	9.9%	473	-42.1%	228	20.1%	449	-39.1%
110 - J	1,704	1,439	18.5%	2,508	-32.1%	2,164	-21.2%	2,445	-30.3%
112 - L	6,256	5,092	22.9%	7,636	-18.1%	5,772	8.4%	7,170	-12.7%
113 - M	408	317	28.7%	866	-52.8%	350	16.8%	763	-46.5%
115 (*)	161	171	-5.7%	180	-10.4%	171	-5.8%	142	13.4%
119 - S	6,833	5,486	24.6%	8,970	-23.8%	6,973	-2.0%	8,304	-17.7%
120 - BEACH MAX	3,492	3,369	3.7%	6,667	-47.6%	4,188	-16.6%	6,028	-42.1%
132 TRI-RAIL (DORAL)	8	10	-17.5%	16	-49.2%	13	-40.4%	6	25.5%
135 (*)	688	486	41.6%	1,399	-50.8%	679	1.3%	1,075	-36.0%
136	95	47	102.6%	126	-24.4%	73	30.4%	127	-25.0%
137 - WEST DADE CONN.	882	650	35.6%	1,626	-45.7%	801	10.1%	1,500	-41.2%
150 - MIAMI BEACH AIRPORT FLYER (*)	1,419	794	78.6%	1,867	-24.0%	1,347	5.4%	1,673	-15.2%
155 - BISCAYNE GARDENS CIRCULATOR (*)	23	32	-26.2%	44	-46.8%	21	14.3%	43	-45.3%
175 - NW MIAMI-DADE EXPRESS				33					
183	1,795	1,844	-2.6%	3,149	-43.0%	1,711	4.9%	2,670	-32.8%
195 EXPRESS - BROWARD BLVD				372				405	
196 EXPRESS - SHERIDAN ST				383				371	
200 - CUTLER BAY LOCAL	71	90	-21.4%	158	-55.3%	81	-13.3%	135	-47.8%
202 - LITTLE HAITI CONN. (*)	95	99	-4.5%	140	-32.1%	100	-5.4%	137	-30.8%
204 KILLIAN KAT				1,071				974	

## METROBUS AVERAGE WEEKDAY BOARDINGS BY ROUTE

Route  weekdays	Average Weekday	Average Weekday	Percent Change	Average Weekday	Percent Change	Average Weekday	Percent Change	Average Weekday	Percent Change
	Jul-21	Jul-20	YOY	Feb-20	Current vs Feb-20	Jun-21	MOM	Jul-19	YO2Y
207 (7st) - LITTLE HAVANA CIRC	714	621	14.8%	1,489	-52.1%	648	10.2%	1,463	-51.2%
208 (8st) - LITTLE HAVANA CIRC	755	762	-0.9%	1,308	-42.3%	558	35.2%	1,381	-45.4%
210 - SKYLAKE CIRC (*)	266	183	45.1%	282	-5.7%	275	-3.3%	284	-6.4%
211 - OVERTOWN CIRC. (*)	31	43	-27.8%	58	-46.0%	27	15.1%	74	-57.5%
212 - SWEETWATER CIRC. (*)	28	16	71.6%	15	89.2%	25	10.2%	43	-34.8%
217 - BUNCHE PARK CIRC (*)	40	56	-27.8%	97	-58.6%	45	-10.8%	57	-28.8%
238 EAST/WEST CONN.	269	183	47.3%	449	-40.1%	278	-3.2%	464	-42.0%
246 - NIGHT OWL	3	10	-66.3%	94	-96.4%	10	-64.6%	89	-96.2%
248 - PRINCETON CIRCULATOR (*)	62	73	-14.9%	135	-53.7%	79	-20.7%	114	-45.2%
252 - CORAL REEF MAX	434	271	59.8%	851	-49.0%	402	8.0%	776	-44.1%
254 - BROWNSVILLE CIRC. (*)	31	31	-1.8%	19	59.7%	46	-33.5%	15	108.9%
267 - LUDLAM LIMITED (*)	94	71	31.2%	149	-37.2%	96	-2.8%	123	-23.7%
272 SUNSET KAT (*)	271	199	36.2%	550	-50.7%	278	-2.2%	498	-45.5%
277 - 7th AVENUE MAX	292	322	-9.4%	683	-57.3%	302	-3.3%	545	-46.4%
286 - NORTH POINTE CIRC. (*)	38	17	125.6%	97	-61.0%	32	18.5%	72	-47.6%
287 - SAGA BAY MAX	172	77	123.5%	358	-52.0%	146	17.4%	320	-46.3%
288 - KENDALL CRUISER				762				741	
295 EXPRESS - BROWARD BLVD - CIVIC CENTER				233				249	
296 EXPRESS - SHERIDAN ST - CIVIC CENTER				215				236	
297-27th AVENUE ORANGE MAX	615	601	2.2%	1,356	-54.7%	548	12.2%	1,118	-45.0%
301 DADE-MONROE EXPRESS(*)	974	705	38.2%	841	15.8%	964	1.0%	822	18.5%
302 CARD SOUND EXPRESS(*)	89	47	90.8%	86	3.1%	75	18.1%	79	12.7%
344 (*)	52	45	16.3%	96	-45.4%	66	-20.3%	87	-39.4%
500				81				43	
836 EXPRESS	90					73	24.3%		
GREEN HILLS SHUTTLE (*)	6	6	-1.4%	9	-37.0%	18	-68.9%	6	-5.6%
KINGS CREEK SHUTTLE (*)	8	6	34.5%	13	-40.0%	18	-57.3%	13	-38.8%
SIERRALAKES SHUTTLE (*)	19	33	-43.7%	45	-58.2%	16	19.4%	21	-11.5%
ROBERT SHARP SHUTTLE (*)	20	14	38.9%	10	110.5%	21	-2.9%	5	321.1%
AHEPA SHUTTLE (*)	22	19	14.7%	21	7.2%	22	3.5%	21	6.0%
<b>Total</b>	<b>104,317</b>	<b>85,101</b>	<b>22.6%</b>	<b>167,711</b>	<b>-37.8%</b>	<b>100,645</b>	<b>3.6%</b>	<b>153,414</b>	<b>-32.0%</b>

(\*) The following routes are entirely operated under contract: 1, 29, 34, 46, 56, 57, 71, 72, 82, 95, 101-A, 115, 135, 150, 155, 202, 210, 211, 212, 217, 248, 254, 267, 272, 286, 301, 302 and 344, although some supplemental runs may be performed by DTPW. Conversely, a few routes that are nominally run by DTPW may have a few supplemental runs operated by contractors; Dade-Monroe routes 301 and 302 as well as six Lifeline routes are also under contracted operation.

(1) Includes shuttles and those routes which were not run both years.

(2) Several express routes were suspended beginning at the end of March 2020, due to the SARS-CoV-2 pandemic, while other routes had alignment and schedule modifications made to them, in an ongoing effort to optimize service delivery.

## METROBUS AVERAGE SATURDAY BOARDINGS BY ROUTE

Route	Average Saturday	Average Saturday	Percent Change	Average Saturday	Percent Change	Average Saturday	Percent Change	Average Saturday	Percent Change
	Jul-21	Jul-20	YOY	Feb-20	Current vs Feb-20	Jun-21	MOM	Jul-19	YO2Y
<b>Saturdays</b>									
1 (*)	173	166	4.5%	215	-19.4%	186	-6.9%	182	-4.8%
2	1,120	816	37.4%	1,616	-30.7%	946	18.5%	1,499	-25.3%
3	3,732	2,807	32.9%	5,229	-28.6%	4,066	-8.2%	5,112	-27.0%
7	1,345	906	48.4%	1,887	-28.7%	1,308	2.9%	1,754	-23.3%
8	1,762	1,497	17.7%	2,027	-13.1%	1,969	-10.5%	1,974	-10.7%
9	2,467	2,273	8.5%	3,034	-18.7%	2,539	-2.8%	2,968	-16.9%
10	1,470	1,294	13.6%	1,896	-22.5%	1,048	40.3%	1,711	-14.1%
11	3,869	2,991	29.4%	5,182	-25.3%	3,651	6.0%	5,131	-24.6%
16	1,024	1,104	-7.2%	1,566	-34.6%	1,021	0.3%	1,349	-24.1%
17	1,626	1,534	6.0%	2,363	-31.2%	1,579	2.9%	2,376	-31.6%
22	1,389	1,464	-5.1%	2,084	-33.4%	1,340	3.6%	1,959	-29.1%
24 - Coral Way Limited	763	616	23.8%	1,165	-34.6%	741	2.9%	1,154	-33.9%
27	2,969	2,452	21.1%	4,034	-26.4%	2,925	1.5%	3,877	-23.4%
31 - BUSWAY LOCAL	567	532	6.6%	896	-36.7%	623	-9.0%	844	-32.9%
32	709	627	13.2%	1,029	-31.1%	698	1.6%	1,012	-29.9%
33	657	439	49.7%	951	-30.9%	685	-4.0%	893	-26.4%
35	616	806	-23.5%	1,372	-55.1%	896	-31.2%	1,145	-46.1%
36	968	1,025	-5.6%	1,289	-24.9%	879	10.1%	1,134	-14.7%
37	1,556	1,147	35.7%	2,090	-25.6%	1,330	17.0%	2,082	-25.3%
38	2,998	2,842	5.5%	4,715	-36.4%	2,435	23.2%	4,679	-35.9%
40	423	379	11.8%	655	-35.3%	473	-10.4%	642	-34.0%
42	378	313	20.9%	552	-31.5%	418	-9.6%	566	-33.2%
52	355	441	-19.6%	686	-48.3%	410	-13.4%	645	-44.9%
54	1,176	1,331	-11.6%	1,727	-31.9%	1,267	-7.1%	1,692	-30.5%
55 MARLINS SHUTTLE								91	
62	953	1,148	-17.0%	1,343	-29.1%	863	10.4%	1,198	-20.4%
71 (*)	156	91	71.0%	252	-38.2%	165	-5.6%	157	-1.0%
72 (*)	314	170	85.2%	350	-10.1%	245	28.2%	355	-11.4%
73	688	468	47.1%	860	-20.0%	705	-2.4%	906	-24.0%
75	346	299	15.7%	468	-26.0%	330	5.0%	431	-19.7%
77	2,997	2,501	19.8%	4,197	-28.6%	2,998	0.0%	3,990	-24.9%
87	315	173	82.8%	402	-21.6%	314	0.6%	433	-27.1%
88	1,130	819	38.0%	1,620	-30.2%	1,009	12.0%	1,570	-28.0%
99	682	604	12.9%	849	-19.7%	573	19.1%	859	-20.6%

## METROBUS AVERAGE SATURDAY BOARDINGS BY ROUTE

Route	Average Saturday	Average Saturday	Percent Change	Average Saturday	Percent Change	Average Saturday	Percent Change	Average Saturday	Percent Change
	Jul-21	Jul-20	YOY	Feb-20	Current vs Feb-20	Jun-21	MOM	Jul-19	YO2Y
<b>Saturdays</b>									
101 - A (*)	67	41	63.9%	71	-5.1%	64	5.4%	58	15.9%
102 - B	649	345	88.3%	851	-23.7%	652	-0.5%	790	-17.8%
103 - C	165	106	56.0%	315	-47.5%	124	33.1%	271	-38.9%
104	200	66	201.3%	468	-57.4%	262	-23.8%	444	-55.0%
105 - E	488	390	25.2%	619	-21.1%	427	14.4%	600	-18.5%
107 - G	656	621	5.7%	1,066	-38.5%	700	-6.2%	967	-32.1%
108 - H	232	260	-10.8%	372	-37.8%	254	-8.9%	378	-38.8%
110 - J	1,330	880	51.2%	1,952	-31.9%	1,231	8.1%	1,944	-31.6%
112 - L	4,217	3,425	23.1%	5,667	-25.6%	4,514	-6.6%	5,887	-28.4%
113 - M	322	197	63.9%	503	-35.9%	175	84.8%	445	-27.5%
115 (*)	93	123	-24.4%	82	13.1%	217	-57.0%	95	-2.1%
119 - S	5,033	4,131	21.8%	6,861	-26.6%	5,600	-10.1%	6,851	-26.5%
120 - BEACH MAX	2,674	2,696	-0.8%	4,744	-43.6%	2,471	8.2%	4,723	-43.4%
135 (*)	297	209	42.5%	539	-44.8%	304	-2.1%	498	-40.3%
137 - WEST DADE CONN.	732	539	35.8%	1,027	-28.7%	712	2.9%	1,072	-31.7%
150 - MIAMI BEACH AIRPORT FLYER (*)	1,443	684	111.0%	1,604	-10.1%	1,244	16.0%	1,435	0.5%
183	1,261	1,089	15.9%	1,790	-29.5%	1,343	-6.1%	1,769	-28.7%
200 - CUTLER BAY LOCAL	61	50	21.0%	119	-49.0%	64	-4.3%	134	-54.5%
202 - LITTLE HAITI CONN. (*)	59	46	28.7%	50	17.9%	57	4.8%	63	-6.4%
207 (7st) - LITTLE HAVANA CIRC	672	388	73.1%	1,032	-34.9%	590	14.0%	886	-24.1%
208 (8st) - LITTLE HAVANA CIRC	621	538	15.6%	1,044	-40.5%	547	13.7%	1,009	-38.4%
210 - SKYLAKE CIRC (*)	136	92	48.2%	165	-17.8%	136	-0.3%	180	-24.6%
246 - NIGHT OWL	9	1	1100.0%	84	-89.3%	4	125.0%	72	-87.5%
252 - CORAL REEF MAX	191	149	28.2%	302	-36.8%	203	-5.9%	274	-30.3%
286 - NORTH POINTE CIRC. (*)	35	20	73.8%	41	-13.7%	29	21.4%	50	-29.2%
301 DADE-MONROE EXPRESS(*)	922	719	28.3%	801	15.1%	980	-6.0%	777	18.6%
302 CARD SOUND EXPRESS(*)	82	32	161.0%	57	45.2%	73	13.0%	58	43.0%
338 - WEEKEND EXPRESS	178	58	206.6%	237	-24.9%	137	30.0%	213	-16.6%
500				70		4		35	
12/21 WEEKEND INTERL.	1,825	1,825	0.0%	2,528	-27.8%	1,399	30.4%	2,466	-26.0%
FEDERATION GARDENS SHUTTLE (*)	24	12	109.1%	28	-14.1%	17	47.9%	22	10.9%
<b>Total</b>	<b>66,397</b>	<b>55,814</b>	<b>19.0%</b>	<b>93,742</b>	<b>-29.2%</b>	<b>65,182</b>	<b>1.9%</b>	<b>90,865</b>	<b>-26.9%</b>

## METROBUS AVERAGE SUNDAY BOARDINGS BY ROUTE

Route	Average Sunday	Average Sunday	Percent Change	Average Sunday	Percent Change	Average Sunday	Percent Change	Average Sunday	Percent Change
	Jul-21	Jul-20	YOY	Feb-20	Current vs Feb-20	Jun-21	MOM	Jul-19	YO2Y
<b>Sundays</b>									
1 (*)	132	137	-3.6%	201	-34.2%	128	2.9%	202	-34.5%
2	772	546	41.4%	1,335	-42.2%	780	-1.0%	1,060	-27.2%
3	3,075	2,151	43.0%	4,353	-29.3%	3,296	-6.7%	4,178	-26.4%
7	916	712	28.7%	1,654	-44.6%	1,005	-8.8%	1,450	-36.8%
8	1,264	1,140	11.0%	1,746	-27.6%	1,066	18.6%	1,718	-26.4%
9	1,957	1,625	20.4%	2,549	-23.2%	2,173	-9.9%	2,303	-15.0%
10	912	960	-5.0%	1,441	-36.7%	983	-7.2%	1,324	-31.1%
11	2,372	2,304	2.9%	3,917	-39.4%	2,270	4.5%	3,866	-38.7%
16	629	624	0.8%	997	-36.9%	613	2.6%	856	-26.5%
17	1,148	1,149	0.0%	1,833	-37.3%	1,040	10.4%	1,673	-31.4%
22	993	1,154	-14.0%	1,548	-35.9%	887	11.9%	1,502	-33.9%
24 - Coral Way Limited	676	631	7.2%	905	-25.2%	563	20.2%	932	-27.4%
27	2,028	1,924	5.4%	2,918	-30.5%	1,975	2.7%	2,976	-31.8%
31 - BUSWAY LOCAL	427	411	4.0%	715	-40.2%	368	16.1%	644	-33.6%
32	425	545	-21.9%	772	-44.9%	333	27.9%	742	-42.7%
33	414	323	28.0%	607	-31.8%	346	19.8%	602	-31.3%
35	395	662	-40.4%	942	-58.0%	651	-39.3%	926	-57.3%
36	775	880	-11.8%	1,111	-30.2%	729	6.4%	1,056	-26.6%
37	1,107	1,037	6.8%	1,739	-36.3%	1,005	10.2%	1,734	-36.1%
38	2,352	2,740	-14.2%	4,147	-43.3%	2,353	0.0%	3,665	-35.8%
40	324	294	10.2%	447	-27.5%	298	8.9%	474	-31.6%
42	257	247	3.9%	416	-38.2%	229	12.3%	350	-26.7%
52	285	293	-2.5%	466	-38.8%	304	-6.0%	471	-39.4%
54	815	943	-13.6%	1,171	-30.4%	755	7.9%	1,216	-33.0%
55 MARLINS SHUTTLE								165	
62	504	888	-43.2%	891	-43.4%	456	10.7%	820	-38.5%
71 (*)	107	94	14.9%	162	-33.7%	106	1.3%	125	-14.2%
72 (*)	209	178	17.2%	265	-21.1%	167	25.1%	296	-29.5%
73	362	262	38.1%	495	-26.9%	233	55.4%	451	-19.7%
75	191	169	13.5%	271	-29.4%	193	-1.1%	250	-23.6%
77	2,303	2,243	2.7%	2,815	-18.2%	2,193	5.0%	2,960	-22.2%
87	208	154	35.2%	319	-34.7%	215	-3.3%	310	-32.9%
88	861	686	25.5%	1,286	-33.0%	679	26.8%	1,202	-28.3%
99	490	393	24.8%	658	-25.5%	442	10.8%	655	-25.2%

## METROBUS AVERAGE SUNDAY BOARDINGS BY ROUTE

Route	Average Sunday	Average Sunday	Percent Change	Average Sunday	Percent Change	Average Sunday	Percent Change	Average Sunday	Percent Change
	Jul-21	Jul-20	YOY	Feb-20	Current vs Feb-20	Jun-21	MOM	Jul-19	YO2Y
<b>Sundays</b>									
101 - A (*)	48	49	-1.6%	56	-13.2%	38	26.8%	64	-24.7%
102 - B	552	395	39.9%	717	-23.0%	488	13.2%	700	-21.2%
103 - C	124	101	23.5%	212	-41.2%	92	34.9%	185	-32.9%
104	163	108	51.1%	317	-48.5%	137	19.6%	313	-47.8%
105 - E	453	436	3.9%	616	-26.4%	445	1.7%	600	-24.5%
107 - G	482	508	-5.2%	895	-46.2%	589	-18.2%	823	-41.4%
108 - H	260	243	7.3%	328	-20.7%	218	19.4%	314	-17.2%
110 - J	1,087	811	34.1%	1,638	-33.6%	1,012	7.4%	1,515	-28.2%
112 - L	3,072	3,243	-5.2%	4,804	-36.0%	3,535	-13.1%	4,430	-30.6%
113 - M	254	122	108.6%	431	-41.0%	241	5.6%	391	-35.1%
115 (*)	105	104	0.7%	80	31.3%	184	-42.9%	82	28.7%
119 - S	4,708	4,425	6.4%	7,141	-34.1%	5,180	-9.1%	7,014	-32.9%
120 - BEACH MAX	1,657	1,753	-5.5%	3,469	-52.2%	2,050	-19.2%	3,237	-48.8%
135 (*)	247	168	46.9%	349	-29.2%	210	18.0%	371	-33.4%
137 - WEST DADE CONN.	531	476	11.6%	879	-39.6%	521	1.9%	827	-35.8%
150 - MIAMI BEACH AIRPORT FLYER (*)	1,510	706	114.1%	1,574	-4.0%	1,405	7.5%	1,425	6.0%
183	1,075	917	17.3%	1,413	-23.9%	941	14.2%	1,330	-19.2%
200 - CUTLER BAY LOCAL	19	32	-40.3%	59	-67.9%	41	-53.6%	48	-60.5%
202 - LITTLE HAITI CONN. (*)	46	48	-4.0%	39	16.9%	57	-19.6%	44	4.6%
207 (7st) - LITTLE HAVANA CIRC	508	482	5.4%	796	-36.3%	496	2.3%	667	-23.9%
208 (8st) - LITTLE HAVANA CIRC	529	557	-5.1%	911	-42.0%	514	2.8%	833	-36.5%
210 - SKYLAKE CIRC (*)	143	132	8.3%	143	0.0%	104	37.5%	154	-7.4%
246 - NIGHT OWL	1	4	-71.4%	87	-98.9%			87	-98.9%
252 - CORAL REEF MAX	161	101	59.6%	199	-19.1%	155	4.1%	224	-28.2%
301 DADE-MONROE EXPRESS(*)	908	669	35.7%	751	20.9%	959	-5.3%	756	20.1%
302 CARD SOUND EXPRESS(*)	57	38	51.5%	57	-0.4%	45	25.5%	55	3.3%
338 - WEEKEND EXPRESS	136	63	117.4%	252	-45.9%	153	-10.7%	196	-30.4%
500		1		83		1		54	
12/21 WEEKEND INTERL.	1,206	1,722	-30.0%	2,048	-41.1%	1,319	-8.6%	1,984	-39.2%
<b>Total</b>	<b>49,731</b>	<b>46,902</b>	<b>6.0%</b>	<b>75,428</b>	<b>-34.1%</b>	<b>49,957</b>	<b>-0.5%</b>	<b>71,874</b>	<b>-30.8%</b>

## METROBUS TOTAL MONTHLY BOARDINGS BY ROUTE

Route  <b>Monthly Total</b>	Total Month	Total Month	Percent Change	Total Month	Percent Change	Total Month	Percent Change	Total Month	Percent Change
	Jul-21	Jul-20	YOY	Feb-20	Current vs Feb-20	Jun-21	MOM	Jul-19	YO2Y
1 (*)	4,535	4,688	-3.3%	5,558	-18.4%	4,371	3.8%	8,462	-46.4%
2	48,807	38,983	25.2%	75,463	-35.3%	44,986	8.5%	59,504	-18.0%
3	114,434	86,391	32.5%	146,294	-21.8%	118,827	-3.7%	144,949	-21.1%
7	55,304	44,508	24.3%	86,077	-35.8%	56,434	-2.0%	80,453	-31.3%
8	82,475	63,068	30.8%	95,295	-13.5%	82,363	0.1%	94,868	-13.1%
9	114,928	92,046	24.9%	135,924	-15.4%	110,657	3.9%	131,987	-12.9%
10	38,515	27,220	41.5%	64,874	-40.6%	35,704	7.9%	56,944	-32.4%
11	148,563	114,446	29.8%	187,425	-20.7%	141,114	5.3%	188,534	-21.2%
12	33,814	32,726	3.3%	55,585	-39.2%	33,088	2.2%	56,501	-40.2%
16	31,676	25,683	23.3%	49,061	-35.4%	27,444	15.4%	45,222	-30.0%
17	59,309	59,441	-0.2%	96,715	-38.7%	54,654	8.5%	91,720	-35.3%
19	15,753	14,578	8.1%	30,847	-48.9%	14,822	6.3%	28,094	-43.9%
21	23,352	32,030	-27.1%	36,341	-35.7%	19,401	20.4%	38,618	-39.5%
22	54,945	48,029	14.4%	89,404	-38.5%	51,721	6.2%	87,065	-36.9%
24 - Coral Way Limited	24,898	27,454	-9.3%	36,237	-31.3%	23,456	6.1%	47,591	-47.7%
27	116,235	94,558	22.9%	171,282	-32.1%	110,347	5.3%	168,204	-30.9%
29 (*)	6,135	5,261	16.6%	10,684	-42.6%	6,966	-11.9%	13,001	-52.8%
31 - BUSWAY LOCAL	16,238	14,986	8.4%	29,125	-44.2%	15,433	5.2%	28,478	-43.0%
32	33,511	35,688	-6.1%	56,027	-40.2%	30,453	10.0%	57,016	-41.2%
33	25,144	16,293	54.3%	40,918	-38.6%	22,817	10.2%	39,189	-35.8%
34 EXPRESS (*)	21,578	13,430	60.7%	40,159	-46.3%	20,625	4.6%	38,665	-44.2%
35	27,223	36,911	-26.2%	59,041	-53.9%	36,243	-24.9%	57,583	-52.7%
36	42,279	42,205	0.2%	61,606	-31.4%	35,136	20.3%	60,930	-30.6%
37	61,422	49,475	24.1%	82,870	-25.9%	56,465	8.8%	86,005	-28.6%
38	96,978	100,447	-3.5%	167,379	-42.1%	87,397	11.0%	169,322	-42.7%
39 EXPRESS	3,377	2,280	48.1%	17,853	-81.1%	5,933	-43.1%	18,167	-81.4%
40	25,031	22,535	11.1%	40,497	-38.2%	24,359	2.8%	40,066	-37.5%
42	15,126	12,963	16.7%	20,825	-27.4%	14,258	6.1%	21,623	-30.0%
46 - LIBERTY CITY CONN. (*)	279	311	-10.3%	814	-65.7%	297	-6.1%	516	-45.9%
51 - FLAGLER MAX	43,997	32,268	36.3%	62,186	-29.2%	41,888	5.0%	63,055	-30.2%
52	17,195	16,767	2.6%	30,522	-43.7%	17,099	0.6%	30,986	-44.5%
54	48,324	58,357	-17.2%	72,125	-33.0%	45,753	5.6%	74,021	-34.7%
55 MARLINS SHUTTLE								728	
56 (*)	4,452	2,992	48.8%	7,071	-37.0%	4,194	6.2%	7,506	-40.7%
57 (*)	6,446	4,888	31.9%	8,665	-25.6%	6,444	0.0%	8,621	-25.2%
62	29,996	39,882	-24.8%	46,582	-35.6%	28,081	6.8%	46,593	-35.6%
71 (*)	9,245	8,080	14.4%	16,118	-42.6%	9,973	-7.3%	13,311	-30.5%
72 (*)	10,955	9,390	16.7%	18,433	-40.6%	10,159	7.8%	17,993	-39.1%

## METROBUS TOTAL MONTHLY BOARDINGS BY ROUTE

Route <b>Monthly Total</b>	Total Month	Total Month	Percent Change	Total Month	Percent Change	Total Month	Percent Change	Total Month	Percent Change
	Jul-21	Jul-20	YOY	Feb-20	Current vs Feb-20	Jun-21	MOM	Jul-19	YO2Y
73	34,314	22,100	55.3%	48,767	-29.6%	32,723	4.9%	49,204	-30.3%
75	18,165	16,990	6.9%	31,994	-43.2%	16,205	12.1%	29,575	-38.6%
77	135,244	106,819	26.6%	174,833	-22.6%	123,918	9.1%	181,784	-25.6%
79				7,228				7,372	
82 - WESTCHESTER CIRC. (*)	708	664	6.6%	1,482	-52.2%	683	3.7%	1,232	-42.5%
87	22,559	16,156	39.6%	33,273	-32.2%	23,330	-3.3%	35,120	-35.8%
88	46,645	32,157	45.1%	54,772	-14.8%	41,484	12.4%	55,011	-15.2%
93 - BISCAYNE MAX	36,719	32,949	11.4%	66,684	-44.9%	31,492	16.6%	67,101	-45.3%
95 EXPRESS (*)	12,375	6,611	87.2%	33,796	-63.4%	11,618	6.5%	38,657	-68.0%
99	24,180	23,213	4.2%	36,325	-33.4%	23,454	3.1%	35,966	-32.8%
101 - A (*)	3,532	2,392	47.7%	4,114	-14.1%	3,318	6.4%	3,950	-10.6%
102 - B	32,557	20,302	60.4%	42,683	-23.7%	31,228	4.3%	40,003	-18.6%
103 - C	6,132	3,530	73.7%	11,682	-47.5%	4,863	26.1%	11,001	-44.3%
104	11,821	5,539	113.4%	20,351	-41.9%	12,313	-4.0%	19,853	-40.5%
105 - E	22,547	18,047	24.9%	31,302	-28.0%	21,009	7.3%	29,681	-24.0%
107 - G	26,438	24,057	9.9%	43,178	-38.8%	26,974	-2.0%	41,170	-35.8%
108 - H	8,200	7,728	6.1%	12,624	-35.0%	6,897	18.9%	12,961	-36.7%
110 - J	47,873	39,850	20.1%	66,481	-28.0%	56,573	-15.4%	69,141	-30.8%
112 - L	167,821	143,789	16.7%	200,268	-16.2%	159,178	5.4%	203,437	-17.5%
113 - M	11,457	8,571	33.7%	21,548	-46.8%	9,352	22.5%	20,524	-44.2%
115 (*)	4,378	4,842	-9.6%	4,334	1.0%	5,369	-18.5%	3,919	11.7%
119 - S	192,196	160,395	19.8%	242,257	-20.7%	196,512	-2.2%	245,158	-21.6%
120 - BEACH MAX	94,988	95,281	-0.3%	170,942	-44.4%	110,224	-13.8%	167,689	-43.4%
132 TRI-RAIL (DORAL)	111	221	-49.8%	312	-64.4%	226	-50.9%	139	-20.1%
135 (*)	17,161	12,676	35.4%	32,067	-46.5%	16,983	1.0%	27,490	-37.6%
136	2,003	1,083	84.9%	2,524	-20.6%	1,609	24.5%	2,796	-28.4%
137 - WESTDADE CONN.	24,834	19,015	30.6%	41,167	-39.7%	22,549	10.1%	41,415	-40.0%
150 - MIAMI BEACH AIRPORT FLYER (*)	44,561	23,827	87.0%	51,651	-13.7%	40,223	10.8%	49,676	-10.3%
155 - BISCAYNE GARDENS CIRCULATOR (*)	492	730	-32.6%	881	-44.2%	451	9.1%	943	-47.8%
175 - NW MIAMI-DADE EXPRESS				661					
183	49,375	50,421	-2.1%	77,570	-36.3%	46,767	5.6%	72,454	-31.9%
195 EXPRESS - BROWARD BLVD				7,441				8,903	
196 EXPRESS - SHERIDAN ST				7,658				8,154	
200 - CUTLER BAY LOCAL	1,879	2,391	-21.4%	3,984	-52.8%	2,043	-8.0%	3,745	-49.8%
202 - LITTLE HAITI CONN. (*)	2,515	2,657	-5.3%	3,200	-21.4%	2,659	-5.4%	3,487	-27.9%
204 KILLIAN KAT				21,418				21,436	



## METROBUS TOTAL MONTHLY BOARDINGS BY ROUTE

Route	Total Month	Total Month	Percent Change	Total Month	Percent Change	Total Month	Percent Change	Total Month	Percent Change
	Jul-21	Jul-20	YOY	Feb-20	Current vs Feb-20	Jun-21	MOM	Jul-19	YO2Y
<b>Monthly Total</b>									
207 (7st) - LITTLE HAVANA CIRC	20,883	17,770	17.5%	38,127	-45.2%	18,591	12.3%	39,068	-46.5%
208 (8st) - LITTLE HAVANA CIRC	21,596	21,899	-1.4%	35,018	-38.3%	16,526	30.7%	38,577	-44.0%
210 - SKYLAKE CIRC (*)	6,973	5,105	36.6%	7,033	-0.9%	7,004	-0.4%	7,737	-9.9%
211 - OVERTOWN CIRC. (*)	657	997	-34.1%	1,159	-43.3%	598	9.9%	1,621	-59.5%
212 - SWEETWATER CIRC. (*)	586	374	56.7%	295	98.6%	557	5.2%	942	-37.8%
217 - BUNCHE PARK CIRC. (*)	847	1,285	-34.1%	1,949	-56.5%	995	-14.9%	1,246	-32.0%
238 EAST/WEST CONN.	5,657	4,207	34.5%	8,987	-37.1%	6,125	-7.6%	10,215	-44.6%
246 - NIGHT OWL	27	249	-89.2%	2,641	-99.0%	52	-48.1%	2,686	-99.0%
248 - PRINCETON CIRCULATOR (*)	1,308	1,684	-22.3%	2,690	-51.4%	1,729	-24.3%	2,500	-47.7%
252 - CORAL REEF MAX	10,868	7,241	50.1%	19,325	-43.8%	10,264	5.9%	19,276	-43.6%
254 - BROWNSVILLE CIRC. (*)	644	718	-10.3%	384	67.7%	1,015	-36.6%	323	99.4%
267 - LUDLAM LIMITED (*)	1,964	1,640	19.8%	2,978	-34.0%	2,116	-7.2%	2,697	-27.2%
272 SUNSET KAT (*)	5,700	4,585	24.3%	11,004	-48.2%	6,107	-6.7%	10,959	-48.0%
277 - 7th AVENUE MAX	6,129	7,410	-17.3%	13,669	-55.2%	6,642	-7.7%	11,982	-48.8%
286 - NORTH POINTE CIRC. (*)	971	467	107.9%	2,145	-54.7%	819	18.6%	1,787	-45.7%
287 - SAGA BAY MAX	3,608	1,768	104.1%	7,160	-49.6%	3,219	12.1%	7,039	-48.7%
288 - KENDALL CRUISER				15,249				16,307	
295 EXPRESS - BROWARD BLVD - CIVIC CENTER				4,668				5,484	
296 EXPRESS - SHERIDAN ST - CIVIC CENTER				4,297				5,188	
297-27th AVENUE ORANGE MAX	12,909	13,834	-6.7%	27,125	-52.4%	12,052	7.1%	24,599	-47.5%
301 DADE-MONROE EXPRESS (*)	29,604	21,763	36.0%	23,838	24.2%	28,968	2.2%	24,971	18.6%
302 CARD SOUND EXPRESS (*)	2,563	1,348	90.1%	2,236	14.6%	2,129	20.4%	2,241	14.4%
338 - WEEKEND EXPRESS	1,571	483	225.3%	2,191	-28.3%	1,158	35.7%	1,833	-14.3%
344 (*)	1,101	1,037	6.2%	1,919	-42.6%	1,448	-24.0%	1,904	-42.2%
500		14		2,301		5		1,345	
836 EXPRESS	1,895					1,525	24.3%		
12/21 WEEKEND INTERL.	15,151	14,187	6.8%	20,830	-27.3%	10,873	39.3%	19,784	-23.4%
GREEN HILLS SHUTTLE (*)	17	23	-26.1%	36	-52.8%	73	-76.7%	30	-43.3%
KINGS CREEK SHUTTLE (*)	39	29	34.5%	52	-25.0%	73	-46.6%	51	-23.5%
SIERRALAKES SHUTTLE (*)	94	167	-43.7%	180	-47.8%	63	49.2%	85	10.6%
ROBERT SHARP SHUTTLE (*)	80	72	11.1%	38	110.5%	103	-22.3%	19	321.1%
AHEPA SHUTTLE (*)	89	97	-8.2%	83	7.2%	86	3.5%	84	6.0%
FEDERATION GARDENS SHUTTLE (*)	122	35	248.6%	142	-14.1%	66	84.8%	88	38.6%
<b>Total</b>	<b>2,769,907</b>	<b>2,366,749</b>	<b>17.0%</b>	<b>4,123,083</b>	<b>-32.8%</b>	<b>2,672,570</b>	<b>3.6%</b>	<b>4,094,906</b>	<b>-32.4%</b>

## METROBUS HOLIDAY BOARDINGS BY ROUTE

### Independence Day Holiday (observed 7/5/21)

ROUTES	Independence Day (observed) 2020	Independence Day (observed) 2021	Pct Delta	ROUTES	Independence Day (observed) 2020	Independence Day (observed) 2021	Pct Delta
1	270	107	-60.4%	88	1,296	927	-28.5%
2	1,328	1,047	-21.2%	99	833	546	-34.5%
3	3,316	3,417	3.0%	101	83	76	-8.4%
7	1,620	979	-39.6%	102	736	728	-1.1%
8	2,533	1,248	-50.7%	103	99	169	70.7%
9	3,977	2,302	-42.1%	104	291	248	-14.8%
10	807	933	15.6%	105	738	471	-36.2%
11	4,160	2,548	-38.8%	107	750	570	-24.0%
12	1,539	787	-48.9%	108	198	337	70.2%
16	858	674	-21.4%	110	1,637	1,253	-23.5%
17	2,510	1,320	-47.4%	112	5,572	3,462	-37.9%
21	1,303	564	-56.7%	113	599	303	-49.4%
22	1,560	1,195	-23.4%	115	160	110	-31.3%
24	927	678	-26.9%	119	5,052	4,193	-17.0%
27	2,867	2,473	-13.7%	120	2,884	1,711	-40.7%
31	521	583	11.9%	135	424	254	-40.1%
32	841	556	-33.9%	137	707	507	-28.3%
33	540	444	-17.8%	150	817	1,619	98.2%
35	1,403	464	-66.9%	183	1,967	1,175	-40.3%
36	1,427	748	-47.6%	200	125	35	-72.0%
37	1,757	1,080	-38.5%	202	57	2	-96.5%
38	4,145	2,231	-46.2%	207	941	578	-38.6%
40	901	382	-57.6%	208	651	570	-12.4%
42	421	236	-43.9%	210	146	222	52.1%
52	814	223	-72.6%	246		1	
54	2,414	950	-60.6%	252	318	186	-41.5%
62	1,667	500	-70.0%	301	712	719	1.0%
71	334	84	-74.9%	302	55	53	-3.6%
72	311	183	-41.2%	338		114	
73	747	432	-42.2%				
75	678	140	-79.4%				
77	3,280	2,929	-10.7%				
87	649	238	-63.3%				
				<b>Total (1)</b>	<b>80,273</b>	<b>53,814</b>	<b>-33.0%</b>

## YEAR-OVER-YEAR BUS RIDERSHIP BY ROUTE SERVICE TYPE

Boardings by Service Type and Route	Average Weekday	Average Weekday	Percent Change	Average Saturday	Average Saturday	Percent Change	Average Sunday	Average Sunday	Percent Change	Total Monthly	Total Monthly	Percent Change
	Jul-21	Jul-20	21 vs 20	Jul-21	Jul-20	21 vs 20	Jul-21	Jul-20	21 vs 20	Jul-21	Jul-20	21 vs 20
<b>Express Routes (1)</b>												
34 EXPRESS (*)	1,028	584	76.0%							21,578	13,430	60.7%
39 EXPRESS	161	99	62.2%							3,377	2,280	48.1%
95-EXPRESS (*)	589	287	105.0%							12,375	6,611	87.2%
150-MIAMI BEACH AIRPORT FLYER (*)	1,419	794	78.6%	1,443	684	111.0%	1,510	706	114.1%	44,561	23,827	87.0%
175 - NW MIAMI-DADE EXPRESS												
195 EXPRESS - BROWARD BLVD												
196 EXPRESS - SHERIDAN ST												
295 EXPRESS - BROWARD BLVD - CIVIC CENTER												
296 EXPRESS - SHERIDAN ST - CIVIC CENTER												
204 KAT-KILLIAN												
288 KENDALL CRUISER												
338 - WEEKEND EXPRESS				178	58	206.6%	136	63	117.4%	1,571	483	225.3%
836 EXPRESS	90									1,895		
<b>Subtotal Express Routes</b>	<b>3,287</b>	<b>1,765</b>	<b>86.2%</b>	<b>1,620</b>	<b>742</b>	<b>118.5%</b>	<b>1,647</b>	<b>768</b>	<b>114.3%</b>	<b>85,357</b>	<b>46,631</b>	<b>83.0%</b>
<b>Percentage of All Bus Routes</b>	<b>3.2%</b>	<b>2.1%</b>		<b>2.4%</b>	<b>1.3%</b>		<b>3.3%</b>	<b>1.6%</b>		<b>3.1%</b>	<b>2.0%</b>	
<b>Contracted Regular &amp; Circulator Routes</b>												
1	143	151	-5.2%	173	166	4.5%	132	137	-3.6%	4,535	4,688	-3.3%
29	292	229	27.7%							6,135	5,261	16.6%
46 - LIBERTY CITY CONN.	13	14	-1.7%							279	311	-10.3%
56	212	130	63.0%							4,452	2,992	48.8%
57	307	213	44.4%							6,446	4,888	31.9%
71	378	319	18.3%	156	91	71.0%	107	94	14.9%	9,245	8,080	14.4%
72	397	348	14.2%	314	170	85.2%	209	178	17.2%	10,955	9,390	16.7%
82 - WESTCHESTER CIRC	27	26	5.6%	28	18	51.2%				708	664	6.6%
101 - A	141	88	59.3%	67	41	63.9%	48	49	-1.6%	3,532	2,392	47.7%
115	161	171	-5.7%	93	123	-24.4%	105	104	0.7%	4,378	4,842	-9.6%
135	688	486	41.6%	297	209	42.5%	247	168	46.9%	17,161	12,676	35.4%
155 - BISCAYNE GARDENS CIRC	23	32	-26.2%							492	730	-32.6%
202 - LITTLE HAITI CONN.	95	99	-4.5%	59	46	28.7%	46	48	-4.0%	2,515	2,657	-5.3%
210 - SKYLAKE CIRC	266	183	45.1%	136	92	48.2%	143	132	8.3%	6,973	5,105	36.6%
211-OVERTOWN CIRC	31	43	-27.8%							657	997	-34.1%
212-SWEETWATER CIRC	28	16	71.6%							586	374	56.7%
217 - BUNCHE PARK CIRC	40	56	-27.8%							847	1,285	-34.1%
248 - PRINCETON CIRCULATOR	62	73	-14.9%							1,308	1,684	-22.3%
254-BROWNSVILLE CIRC	31	31	-1.8%							644	718	-10.3%
267-LUDLAM LIMITED	94	71	31.2%							1,964	1,640	19.8%
272 KAT-SUNSET	271	199	36.2%							5,700	4,585	24.3%
286-NORTH POINTE CIRC	38	17	125.6%	35	20	73.8%				971	467	107.9%
344	52	45	16.3%							1,101	1,037	6.2%
<b>Subtotal Contracted Reg. &amp; Circ. Routes</b>	<b>3,791</b>	<b>3,040</b>	<b>24.7%</b>	<b>1,358</b>	<b>975</b>	<b>39.3%</b>	<b>1,037</b>	<b>910</b>	<b>14.0%</b>	<b>91,584</b>	<b>77,463</b>	<b>18.2%</b>
<b>Percentage of All Bus Routes</b>	<b>3.6%</b>	<b>3.6%</b>		<b>2.0%</b>	<b>1.7%</b>		<b>2.1%</b>	<b>1.9%</b>		<b>3.3%</b>	<b>3.3%</b>	

(1) Several express routes were suspended beginning at the end of March 2020, due to the SARS-CoV-2 pandemic, while other routes had alignment and schedule modifications made to them, in an ongoing effort to optimize service delivery..

(\*) Express routes under contracted operation.

## YEAR-OVER-YEAR BUS RIDERSHIP BY ROUTE SERVICE TYPE

Boardings by Service Type and Route	Average Weekday	Average Weekday	Percent Change	Average Saturday	Average Saturday	Percent Change	Average Sunday	Average Sunday	Percent Change	Total Monthly	Total Monthly	Percent Change
	Jul-21	Jul-20	21 vs 20	Jul-21	Jul-20	21 vs 20	Jul-21	Jul-20	21 vs 20	Jul-21	Jul-20	21 vs 20
<b>Contracted Express Routes</b>												
301-DADE MONROE EXPRESS	974	705	38.2%	922	719	28.3%	908	669	35.7%	29,604	21,763	36.0%
302-CARD SOUND EXPRESS	89	47	90.8%	82	32	161.0%	57	38	51.5%	2,563	1,348	90.1%
<b>Subtotal Contracted Express Routes</b>	<b>1,063</b>	<b>751</b>	<b>41.4%</b>	<b>1,004</b>	<b>750</b>	<b>33.9%</b>	<b>965</b>	<b>707</b>	<b>36.5%</b>	<b>32,167</b>	<b>23,111</b>	<b>39.2%</b>
<b>Percentage of All Bus Routes</b>	<b>1.0%</b>	<b>0.9%</b>		<b>1.5%</b>	<b>1.3%</b>		<b>1.9%</b>	<b>1.5%</b>		<b>1.2%</b>	<b>1.0%</b>	
<b>Limited Stop Routes</b>												
51-FLAGLER MAX	2,095	1,403	49.3%							43,997	32,268	36.3%
93 - BISCAYNE MAX	1,749	1,433	22.1%							36,719	32,949	11.4%
120 - BEACH MAX	3,492	3,369	3.7%	2,674	2,696	-0.8%	1,657	1,753	-5.5%	94,988	95,281	-0.3%
252-CORAL REEF MAX	434	271	59.8%	191	149	28.2%	161	101	59.6%	10,868	7,241	50.1%
277-7TH AVENUE MAX	292	322	-9.4%							6,129	7,410	-17.3%
287-SAGA BAY MAX	172	77	123.5%							3,608	1,768	104.1%
297-27th AVENUE ORANGE MAX	615	601	2.2%							12,909	13,834	-6.7%
<b>Subtotal Limited Stop (MAX) Routes</b>	<b>8,848</b>	<b>7,476</b>	<b>18.3%</b>	<b>2,865</b>	<b>2,845</b>	<b>0.7%</b>	<b>1,818</b>	<b>1,854</b>	<b>-2.0%</b>	<b>209,218</b>	<b>190,751</b>	<b>9.7%</b>
<b>Percentage of All Bus Routes</b>	<b>8.5%</b>	<b>8.8%</b>		<b>4.3%</b>	<b>5.1%</b>		<b>3.7%</b>	<b>4.0%</b>		<b>7.6%</b>	<b>8.1%</b>	
<b>Free Route</b>												
132 -TRI-RAIL DORAL	8	10	-17.5%							111	221	-49.8%
<b>Percentage of All Bus Routes</b>	<b>0.0%</b>	<b>0.0%</b>								<b>0.0%</b>	<b>0.0%</b>	
<b>Shuttles</b>												
55-MARLINS SHUTTLE												
<b>Percentage of All Bus Routes</b>												
<b>Contractor-Operated Lifeline Routes</b>												
GREEN HILLS SHUTTLE	6	6	-1.4%							17	23	-26.1%
KINGS CREEK SHUTTLE	8	6	34.5%							39	29	34.5%
SIERRA LAKES SHUTTLE	19	33	-43.7%							94	167	-43.7%
ROBERT SHARP SHUTTLE	20	14	38.9%							80	72	11.1%
AHEPA SHUTTLE	22	19	14.7%							89	97	-8.2%
FEDERATION GARDENS SHUTTLE				24	12	109.1%				122	35	248.6%
<b>Subtotal Contractor-Operated Lifeline Routes</b>	<b>75</b>	<b>79</b>	<b>-5.4%</b>	<b>24</b>	<b>12</b>	<b>109.1%</b>				<b>441</b>	<b>423</b>	<b>4.3%</b>
<b>Percentage of All Bus Routes</b>	<b>0.1%</b>	<b>0.1%</b>		<b>0.0%</b>	<b>0.0%</b>					<b>0.0%</b>	<b>0.0%</b>	
<b>Other Circulator Route</b>												
200-CUTLER BAY LOCAL	71	90	-21.4%	61	50	21.0%	19	32		1,879	2,391	-21.4%
<b>Percentage of All Bus Routes</b>	<b>0.1%</b>	<b>0.1%</b>		<b>0.1%</b>	<b>0.1%</b>		<b>0.0%</b>	<b>0.1%</b>		<b>0.1%</b>	<b>0.1%</b>	
<b>All Other (Regular) Routes</b>	<b>87,176</b>	<b>71,890</b>	<b>21.3%</b>	<b>59,464</b>	<b>50,441</b>	<b>17.9%</b>	<b>44,246</b>	<b>42,632</b>	<b>3.8%</b>	<b>2,349,150</b>	<b>2,025,758</b>	<b>16.0%</b>
<b>Percentage of All Bus Routes</b>	<b>83.6%</b>	<b>84.5%</b>		<b>89.6%</b>	<b>90.4%</b>		<b>89.0%</b>	<b>90.9%</b>		<b>84.8%</b>	<b>85.6%</b>	
<b>Total Bus System (1)</b>	<b>104,317</b>	<b>85,101</b>	<b>22.6%</b>	<b>66,397</b>	<b>55,814</b>	<b>19.0%</b>	<b>49,731</b>	<b>46,902</b>	<b>6.0%</b>	<b>2,769,907</b>	<b>2,366,749</b>	<b>17.0%</b>

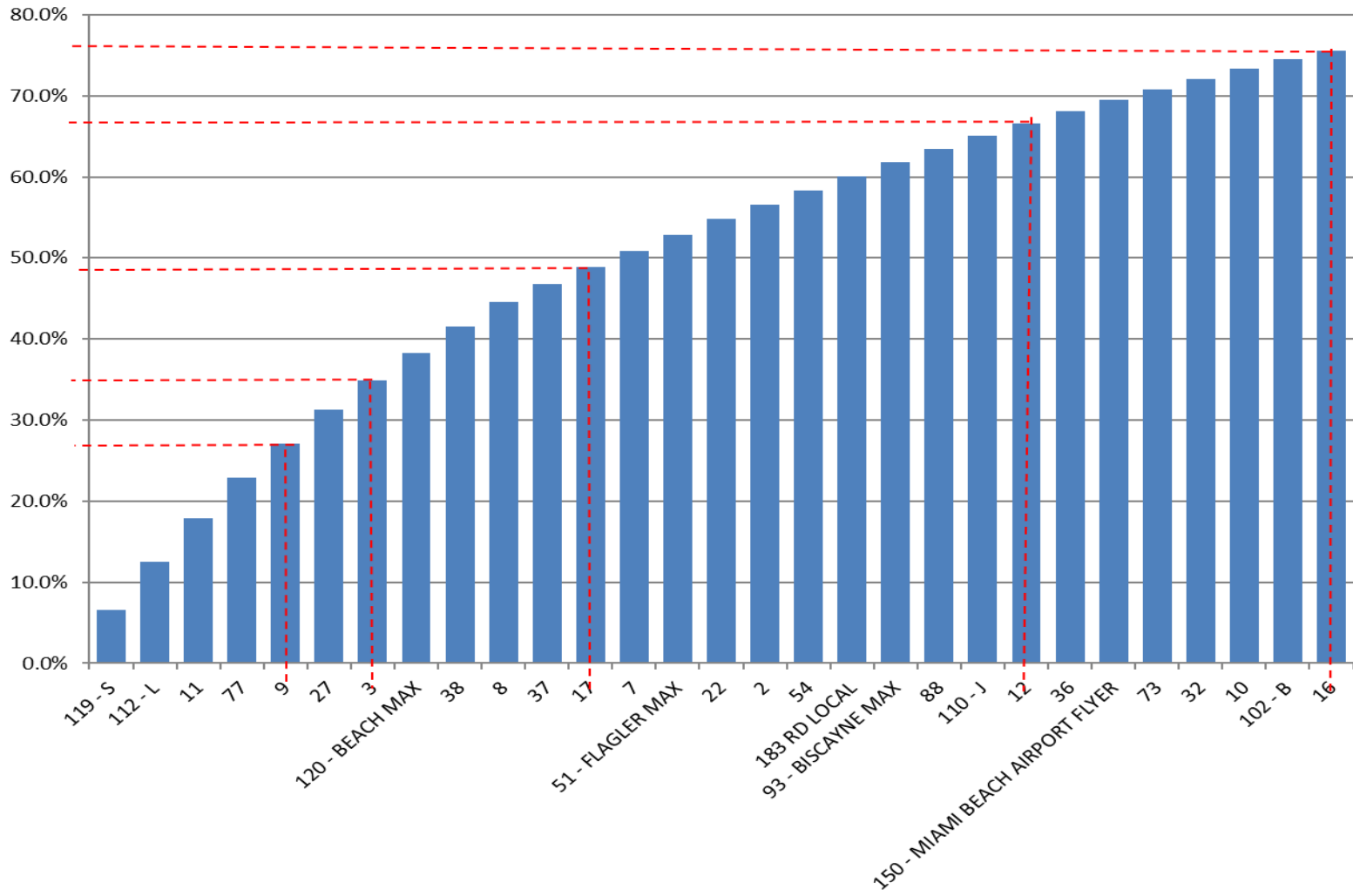
## Bus Routes as Ranked by Percentage of Average Weekday Ridership

Rank	Route	Average Weekday	Percent Share	Cumul Pct Share	Rank	Route	Average Weekday	Percent Share	Cumul Pct Share	Rank	Route	Average Weekday	Percent Share	Cumul Pct Share
1	119	6,833	6.6%	6.6%	36	301	974	0.9%	82.6%	71	101	141	0.1%	99.1%
2	112	6,256	6.0%	12.5%	37	87	950	0.9%	83.5%	72	136	95	0.1%	99.2%
3	11	5,589	5.4%	17.9%	38	33	942	0.9%	84.4%	73	202	95	0.1%	99.3%
4	77	5,178	5.0%	22.9%	39	137	882	0.8%	85.2%	74	267	94	0.1%	99.3%
5	9	4,419	4.2%	27.1%	40	99	872	0.8%	86.0%	75	836	90	0.1%	99.4%
6	27	4,345	4.2%	31.3%	41	105	850	0.8%	86.9%	76	302	89	0.1%	99.5%
7	3	3,828	3.7%	34.9%	42	24	843	0.8%	87.7%	77	200	71	0.1%	99.6%
8	120	3,492	3.3%	38.3%	43	208	755	0.7%	88.4%	78	248	62	0.1%	99.6%
9	38	3,344	3.2%	41.5%	44	19	750	0.7%	89.1%	79	344	52	0.1%	99.7%
10	8	3,207	3.1%	44.6%	45	75	737	0.7%	89.8%	80	217	40	0.0%	99.7%
11	37	2,291	2.2%	46.8%	46	207	714	0.7%	90.5%	81	286	38	0.0%	99.8%
12	17	2,164	2.1%	48.8%	47	135	688	0.7%	91.2%	82	211	31	0.0%	99.8%
13	7	2,095	2.0%	50.8%	48	52	666	0.6%	91.8%	83	254	31	0.0%	99.8%
14	51	2,095	2.0%	52.9%	49	297	615	0.6%	92.4%	84	212	28	0.0%	99.9%
15	22	2,049	2.0%	54.8%	50	95	589	0.6%	93.0%	85	82	27	0.0%	99.9%
16	2	1,874	1.8%	56.6%	51	42	569	0.5%	93.5%	86	155	23	0.0%	99.9%
17	54	1,827	1.8%	58.4%	52	31	537	0.5%	94.0%	87	AS	22	0.0%	99.9%
18	183	1,795	1.7%	60.1%	53	104	477	0.5%	94.5%	88	RS	20	0.0%	99.9%
19	93	1,749	1.7%	61.8%	54	252	434	0.4%	94.9%	89	SL	19	0.0%	100.0%
20	88	1,747	1.7%	63.4%	55	113	408	0.4%	95.3%	90	46	13	0.0%	100.0%
21	110	1,704	1.6%	65.1%	56	72	397	0.4%	95.7%	91	132	8	0.0%	100.0%
22	12	1,610	1.5%	66.6%	57	71	378	0.4%	96.0%	92	KC	8	0.0%	100.0%
23	36	1,598	1.5%	68.1%	58	57	307	0.3%	96.3%	93	GH	6	0.0%	100.0%
24	150	1,419	1.4%	69.5%	59	29	292	0.3%	96.6%	94	246	3	0.0%	100.0%
25	73	1,384	1.3%	70.8%	60	277	292	0.3%	96.9%					
26	32	1,326	1.3%	72.1%	61	108	273	0.3%	97.1%					
27	10	1,267	1.2%	73.3%	62	272	271	0.3%	97.4%					
28	102	1,264	1.2%	74.5%	63	238	269	0.3%	97.7%					
29	16	1,115	1.1%	75.6%	64	210	266	0.3%	97.9%					
30	21	1,112	1.1%	76.7%	65	103	223	0.2%	98.1%					
31	62	1,081	1.0%	77.7%	66	56	212	0.2%	98.3%					
32	35	1,056	1.0%	78.7%	67	287	172	0.2%	98.5%					
33	34	1,028	1.0%	79.7%	68	115	161	0.2%	98.6%					
34	40	1,014	1.0%	80.7%	69	39	161	0.2%	98.8%					
35	107	988	0.9%	81.6%	70	1	143	0.1%	98.9%					
												entirely contracted		
												contracted supplementals		
<b>Total Boardings</b>												<b>104,317</b>	<b>100.0%</b>	<b>0.0%</b>

(1) Average weekday ridership rounded to the nearest unit; the routes shaded in blue are directly operated, with supplemental runs provided by contractors.

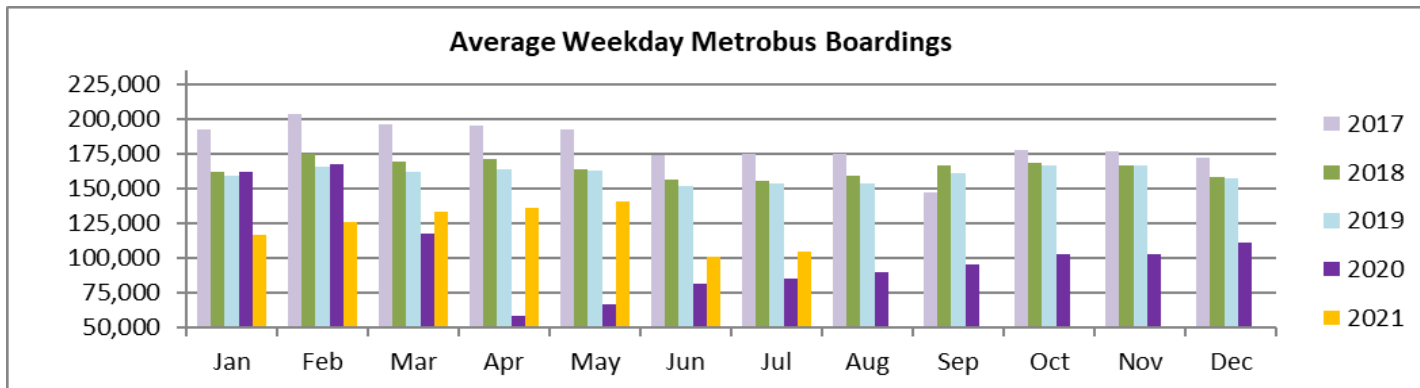
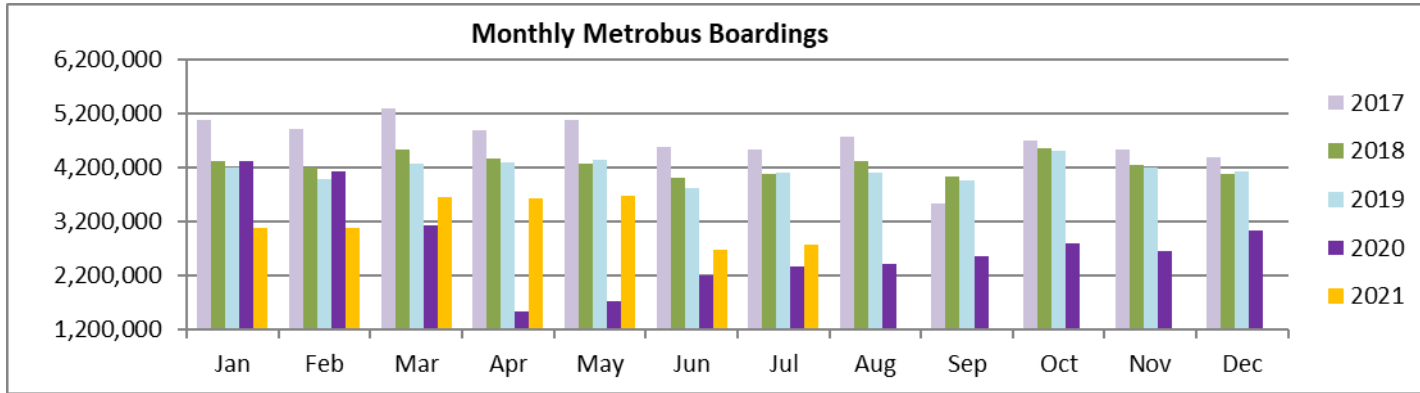
(2) Includes the five Lifeline Shuttles that operate on weekdays: Ahepa, Green Hills, Kings Creek, Robert Sharp and Sierra Lakes.

**Bus - Cumulative Percentage Average Weekday Ridership Share  
Top 1/4, 1/3, 1/2, 2/3 and 3/4 of Routes**



(\*) Routes entirely run by contractor

## TOTAL MONTHLY AND AVERAGE WEEKDAY RIDERSHIP YEAR OVER YEAR COMPARISON CHARTS – METROBUS



**“TOP 5 / BOTTOM 5” BUS ROUTES AVERAGE WEEKDAY RIDERSHIP PERFORMANCE  
YEAR OVER YEAR COMPARISONS**

<b>Route</b>	<b>Jul-21</b>	<b>Jul-20</b>	<b>Absolute Delta (1)</b>	<b>Percent Delta (2)</b>
<b>11</b>	5,589	4,055	1,533	37.8%
<b>77</b>	5,178	3,819	1,359	35.6%
<b>119 - S</b>	6,833	5,486	1,347	24.6%
<b>112 - L</b>	6,256	5,092	1,164	22.9%
<b>9</b>	4,419	3,324	1,095	33.0%
<b>54</b>	1,827	2,142	-315	-14.7%
<b>62</b>	1,081	1,380	-299	-21.6%
<b>35</b>	1,056	1,349	-294	-21.8%
<b>21</b>	1,112	1,393	-281	-20.1%
<b>24</b>	843	977	-134	-13.7%

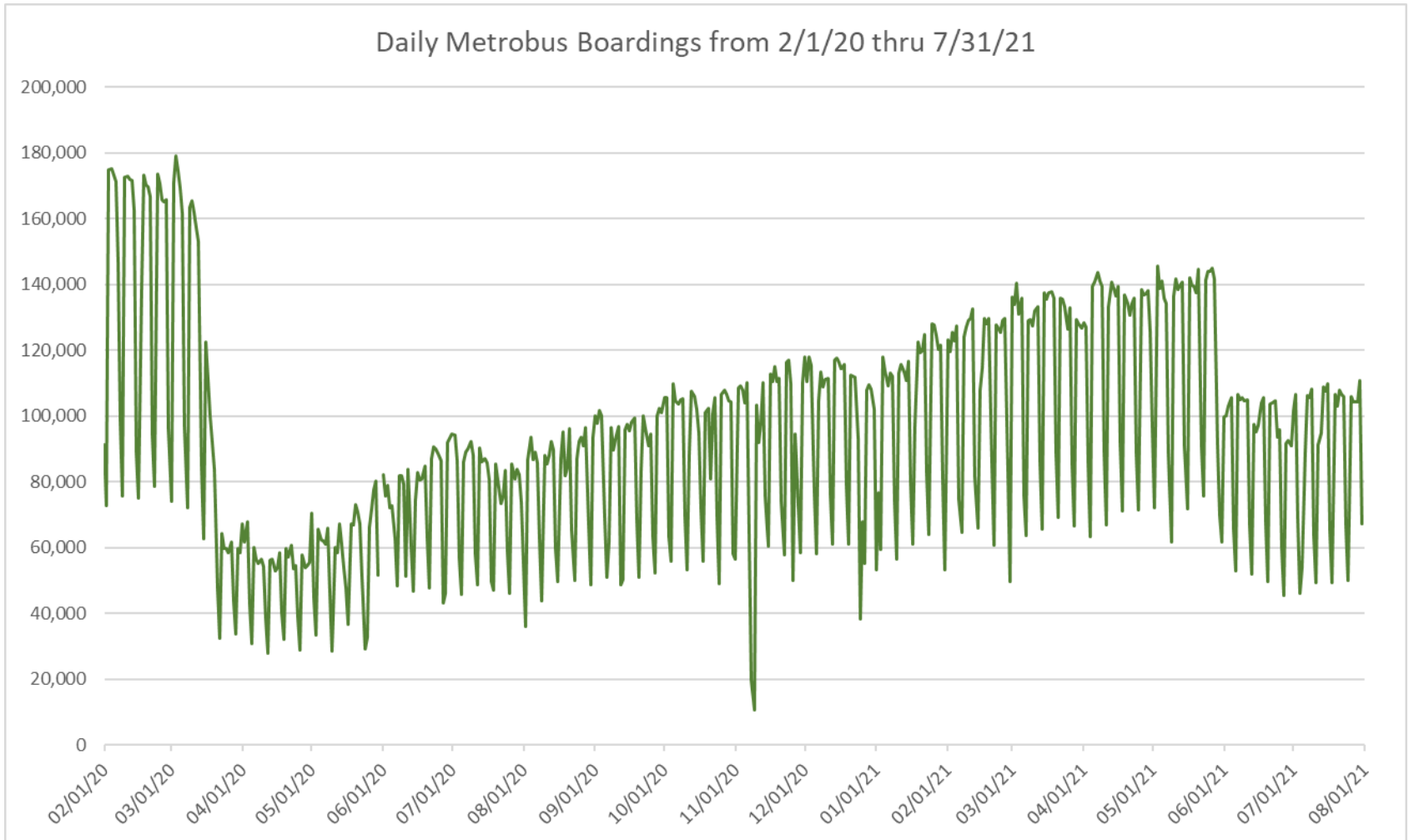
(†) Route with supplementals run by contractor..

(1) Averages rounded to the nearest boarding, data as reported by APC system or/and contractor, depending on route; Lifelines excluded.

(2) As a result of the SARS-CoV-2 pandemic, rides were fare-free beginning March 22, 2020; many bus routes continued reporting YOY gains in June 2021, since June 2020 was the fourth month showing clear reduction effects on ridership from the SARS-CoV-2 pandemic. Fares were reinstated June 1, 2021, and ridership data from the farebox system rather than the automatic passenger counter system is utilized from that date going forward.



## DAILY METROBUS RIDERSHIP SINCE FEBRUARY 1, 2020



- (1) National Emergency was declared on 3/13/20 as a result of the SARS-CoV-2 pandemic.
- (2) There was no Metrobus, Metrorail and Metromover service on 5/31/20, as a safety precaution.
- (3) The dip at the start of the second week of November 2020 is due to Hurricane Eta.
- (4) The reduction seen beginning 6/1/21 is partly due to the resumption of fares and partly the result of resuming reporting Cubic farebox data rather than bus APC counts.
- (5) Periodic (weekly) variations are prominent, since weekday ridership is almost always significantly higher than weekend or holiday ridership.

## METROBUS PARKING PATRONAGE SUMMARY July 2021

PARK-RIDE LOT	ACTUAL AVAILABLE SPACES	ACTUAL OCCUPANCY	PERCENT OCCUPANCY
Transitway / SW 152nd St	200	90	45%
Transitway / SW 168th St	149	56	38%
Transitway / SW 200th Street (effective February 2020)	100	28	28%
Transitway / SW 112 Ave (Target)	450	92	20%
Transitway / SW 244th St	95	31	33%
Transitway / SW 296th St	139	37	27%
Transitway / SW 344th St	248	133	54%
Coral Reef Drive 117/Turnpike	95	50	53%
Golden Glades - East Lot	535	205	38%
Golden Glades - West Lot	1,007	31	3%
Hammocks Town Center (SW 152 Ave / SW 104 St)	50	0	0%
Kendall Dr./SW 127th Ave	161	8	5%
West Kendall Transit Term (Kendall Dr / SW162 Ave)	40	4	10%
NW 7th Avenue Transit Village (NW 7 Ave / NW 62 St)	25	21	84%
Miami Gardens Dr. / NW 73rd Ave	136	0	0%
Dolphin Station (effective Mar 2020)	348	39	11%
I-75 / Miami Gardens Dr (effective June 2019)	298	0	0%
<b>TOTAL</b>	<b>4,076</b>	<b>825</b>	<b>20%</b>

*Note: some park-ride lots are joint-use and the number of park-ride vehicles may exceed the number of spaces allocated.*

# Metrorail



## METRORAIL AVERAGE WEEKDAY BOARDINGS BY STATION (†)

<b>Weekdays</b>	<b>Average Weekday</b>	<b>Average Weekday</b>	<b>Percent Change</b>	<b>Average Weekday</b>	<b>Percent Change</b>	<b>Average Weekday</b>	<b>Percent Change</b>	<b>Average Weekday</b>	<b>Percent Change</b>
<b>STATIONS</b>	<b>Jul-21</b>	<b>Jul-20</b>	<b>YOY</b>	<b>Feb-20</b>	<b>Current vs Feb-20</b>	<b>Jun-21</b>	<b>MOM</b>	<b>Jul-19</b>	<b>YO2Y</b>
ALLAPATTAH	951	924	2.9%	1,942	-51.1%	972	-2.2%	1,640	-42.0%
BRICKELL	2,998	2,743	9.3%	6,529	-54.1%	3,012	-0.4%	5,584	-46.3%
BROWNSVILLE	506	733	-30.9%	862	-41.2%	512	-1.0%	752	-32.7%
CIVIC CENTER	2,651	1,769	49.8%	6,143	-56.8%	2,510	5.6%	5,490	-51.7%
COCONUT GROVE	913	619	47.5%	1,795	-49.2%	937	-2.6%	1,423	-35.9%
CULMER	670	795	-15.8%	1,392	-51.9%	659	1.6%	1,081	-38.1%
DADELAND NORTH	2,221	1,960	13.3%	5,926	-62.5%	2,171	2.3%	5,082	-56.3%
DADELAND SOUTH	2,755	2,385	15.5%	7,150	-61.5%	2,725	1.1%	6,168	-55.3%
DOUGLAS ROAD	1,633	912	79.0%	3,624	-54.9%	1,702	-4.0%	2,922	-44.1%
DR. MARTIN LUTHER KING, JR.	602	671	-10.3%	1,157	-47.9%	607	-0.8%	1,023	-41.1%
EARLINGTON HEIGHTS	796	805	-1.0%	1,662	-52.1%	794	0.3%	1,398	-43.0%
GOVERNMENT CENTER	3,896	2,652	46.9%	10,557	-63.1%	3,912	-0.4%	8,623	-54.8%
HIALEAH	667	709	-5.9%	1,253	-46.8%	703	-5.2%	1,148	-41.9%
MIAMI INTERNATIONAL AIRPORT	676	480	40.9%	1,711	-60.5%	704	-3.9%	1,497	-54.8%
NORTHSIDE	844	875	-3.5%	1,476	-42.8%	805	4.8%	1,275	-33.8%
OKEECHOBEE	574	480	19.4%	1,164	-50.7%	601	-4.5%	1,071	-46.4%
OVERTOWN / ARENA	746	634	17.7%	2,274	-67.2%	726	2.9%	2,019	-63.0%
PALMETTO	761	612	24.3%	1,543	-50.7%	742	2.6%	1,332	-42.9%
SANTA CLARA	397	419	-5.1%	812	-51.0%	419	-5.1%	665	-40.2%
SOUTH MIAMI	1,259	902	39.6%	3,015	-58.2%	1,297	-2.9%	2,532	-50.3%
TRI-RAIL	674	662	1.7%	1,207	-44.2%	704	-4.3%	1,054	-36.1%
UNIVERSITY	626	311	101.4%	2,784	-77.5%	604	3.7%	1,673	-62.6%
VIZCAYA	625	425	46.9%	1,390	-55.1%	633	-1.3%	1,070	-41.6%
<b>TOTAL</b>	<b>28,441</b>	<b>23,478</b>	<b>21.1%</b>	<b>67,367</b>	<b>-57.8%</b>	<b>28,448</b>	<b>0.0%</b>	<b>56,520</b>	<b>-49.7%</b>

(†) In this table and those which follow, "YOY" stands for "year-over-year", "MOM" for "month-over-month" and "YO2Y" for "year over two years", i.e., current month vs 12 months prior, one month prior and 24 months prior, respectively.

(\*) Due to effects from the SARS-CoV-2 pandemic; rides were fare-free beginning March 22, 2020; fares were reinstated on June 1, 2021, in part accounting for the drop in ridership from May 2021.

## METRORAIL AVERAGE SATURDAY BOARDINGS BY STATION

<b>Saturdays</b>	Average Saturday	Average Saturday	Percent Change	Average Saturday	Percent Change	Average Saturday	Percent Change	Average Saturday	Percent Change
STATIONS	Jul-21	Jul-20	YOY	Feb-20	Current vs Feb-20	Jun-21	MOM	Jul-19	YO2Y
ALLAPATTAH	575	571	0.9%	1,051	-45.3%	600	-4.1%	891	-35.4%
BRICKELL	1,592	1,630	-2.3%	2,811	-43.4%	1,771	-10.1%	2,356	-32.4%
BROWNSVILLE	335	524	-36.1%	520	-35.6%	326	2.7%	463	-27.7%
CIVIC CENTER	500	492	1.8%	959	-47.8%	517	-3.2%	846	-40.9%
COCONUT GROVE	518	365	42.2%	928	-44.1%	528	-1.7%	706	-26.6%
CULMER	391	516	-24.2%	721	-45.7%	393	-0.4%	628	-37.7%
DADELAND NORTH	968	983	-1.5%	1,994	-51.4%	956	1.3%	1,576	-38.6%
DADELAND SOUTH	1,289	1,422	-9.4%	2,625	-50.9%	1,290	0.0%	2,159	-40.3%
DOUGLAS ROAD	801	562	42.7%	1,319	-39.3%	839	-4.4%	1,083	-26.0%
DR. MARTIN LUTHER KING, JR.	343	462	-25.6%	625	-45.1%	353	-2.8%	561	-38.8%
EARLINGTON HEIGHTS	487	533	-8.7%	935	-48.0%	522	-6.7%	924	-47.3%
GOVERNMENT CENTER	1,988	1,475	34.8%	4,262	-53.4%	1,851	7.4%	3,149	-36.9%
HIALEAH	375	356	5.5%	583	-35.6%	366	2.6%	523	-28.3%
MIAMI INTERNATIONAL AIRPORT	569	391	45.3%	1,330	-57.2%	570	-0.2%	827	-31.2%
NORTHSIDE	558	624	-10.5%	878	-36.4%	540	3.3%	769	-27.4%
OKEECHOBEE	259	243	6.6%	408	-36.6%	300	-13.7%	356	-27.2%
OVERTOWN / ARENA	308	377	-18.2%	678	-54.5%	332	-7.0%	549	-43.8%
PALMETTO	254	274	-7.3%	458	-44.5%	262	-2.8%	349	-27.2%
SANTA CLARA	218	248	-12.0%	422	-48.4%	246	-11.4%	349	-37.5%
SOUTH MIAMI	641	495	29.6%	1,256	-48.9%	648	-1.0%	1,052	-39.0%
TRI-RAIL	331	362	-8.5%	614	-46.1%	340	-2.7%	496	-33.3%
UNIVERSITY	222	141	57.6%	714	-68.9%	218	2.0%	395	-43.8%
VIZCAYA	365	262	39.2%	622	-41.4%	365	-0.1%	482	-24.4%
<b>TOTAL</b>	<b>13,888</b>	<b>13,304</b>	<b>4.4%</b>	<b>26,714</b>	<b>-48.0%</b>	<b>14,129</b>	<b>-1.7%</b>	<b>21,486</b>	<b>-35.4%</b>

## METRORAIL AVERAGE SUNDAY BOARDINGS BY STATION

<b>Sundays</b>	Average Sunday	Average Sunday	Percent Change	Average Sunday	Percent Change	Average Sunday	Percent Change	Average Sunday	Percent Change
STATIONS	Jul-21	Jul-20	YOY	Feb-20	Current vs Feb-20	Jun-21	MOM	Jul-19	YO2Y
ALLAPATTAH	416	423	-1.8%	791	-47.5%	399	4.2%	649	-36.0%
BRICKELL	1,265	1,427	-11.3%	2,379	-46.8%	1,369	-7.6%	1,768	-28.4%
BROWNSVILLE	235	399	-41.2%	406	-42.2%	248	-5.3%	369	-36.3%
CIVIC CENTER	419	428	-2.2%	791	-47.1%	412	1.6%	707	-40.8%
COCONUT GROVE	396	351	12.6%	838	-52.8%	419	-5.5%	545	-27.3%
CULMER	313	427	-26.6%	616	-49.2%	297	5.3%	502	-37.7%
DADELAND NORTH	712	743	-4.2%	1,685	-57.8%	756	-5.8%	1,194	-40.4%
DADELAND SOUTH	1,026	1,225	-16.3%	2,210	-53.6%	1,039	-1.3%	1,685	-39.1%
DOUGLAS ROAD	549	416	32.1%	1,090	-49.6%	573	-4.2%	837	-34.4%
DR. MARTIN LUTHER KING, JR.	236	384	-38.7%	506	-53.5%	247	-4.5%	416	-43.4%
EARLINGTON HEIGHTS	396	443	-10.6%	799	-50.5%	375	5.5%	685	-42.2%
GOVERNMENT CENTER	1,456	1,296	12.3%	4,044	-64.0%	1,402	3.9%	2,477	-41.2%
HIALEAH	286	292	-2.0%	472	-39.3%	262	9.3%	411	-30.3%
MIAMI INTERNATIONAL AIRPORT	542	433	25.1%	1,343	-59.7%	568	-4.6%	969	-44.1%
NORTHSIDE	433	501	-13.7%	653	-33.7%	425	1.9%	594	-27.1%
OKEECHOBEE	133	171	-22.7%	273	-51.5%	157	-15.6%	248	-46.6%
OVERTOWN / ARENA	273	346	-21.2%	544	-49.9%	274	-0.5%	386	-29.4%
PALMETTO	156	196	-20.3%	336	-53.5%	157	-0.6%	228	-31.4%
SANTA CLARA	142	165	-14.1%	280	-49.3%	151	-5.8%	221	-35.9%
SOUTH MIAMI	455	418	8.7%	987	-53.9%	459	-1.0%	760	-40.2%
TRI-RAIL	278	324	-14.1%	528	-47.3%	280	-0.7%	398	-30.0%
UNIVERSITY	170	113	50.2%	608	-72.1%	164	3.7%	263	-35.4%
VIZCAYA	262	218	20.3%	524	-50.0%	277	-5.4%	352	-25.6%
<b>TOTAL</b>	<b>10,546</b>	<b>11,140</b>	<b>-5.3%</b>	<b>22,701</b>	<b>-53.5%</b>	<b>10,710</b>	<b>-1.5%</b>	<b>16,664</b>	<b>-36.7%</b>

## METRORAIL TOTAL MONTHLY BOARDINGS BY STATION

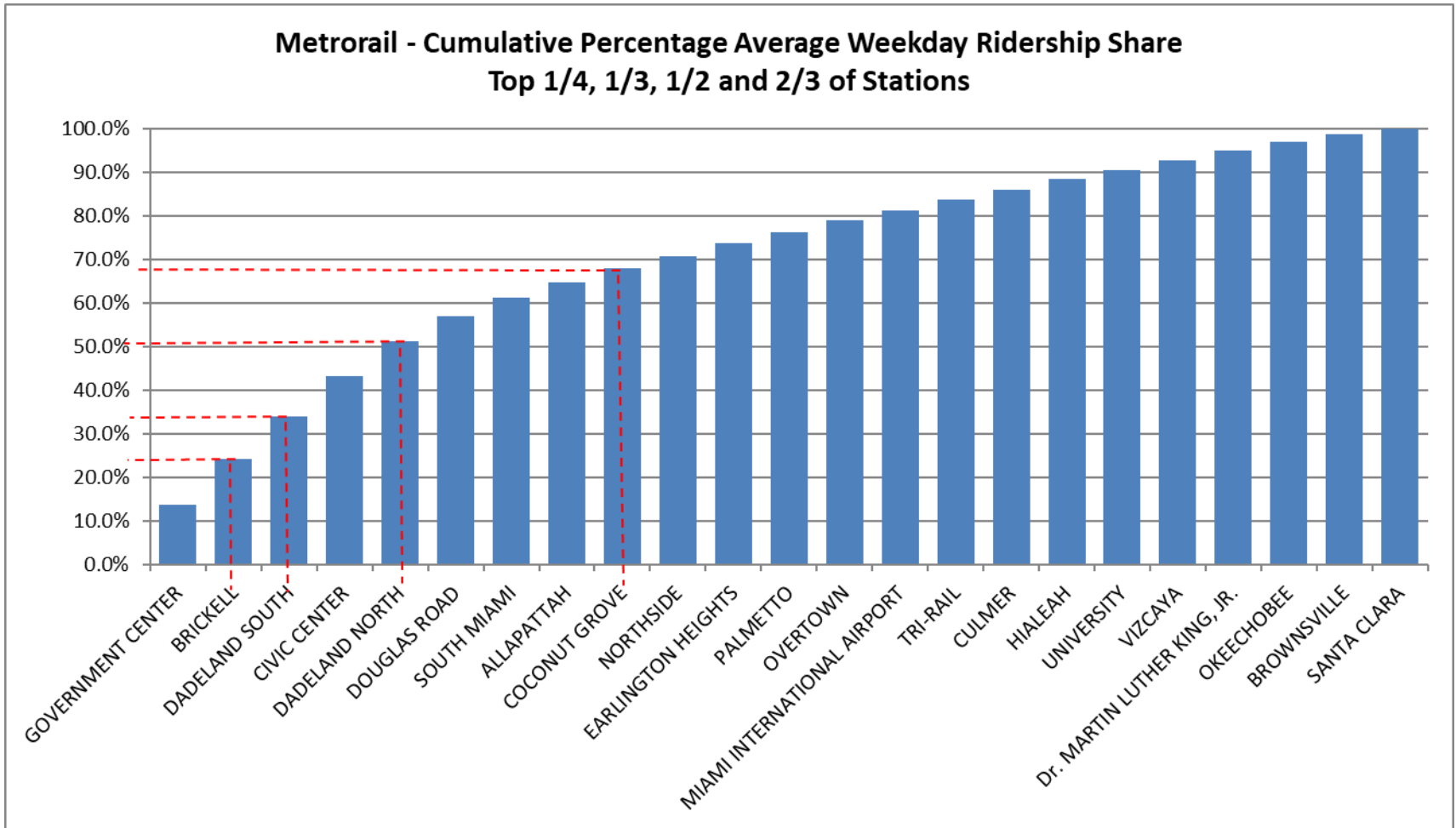
<b>Monthly Totals</b>	Total Month	Total Month	Percent Change	Total Month	Percent Change	Total Month	Percent Change	Total Month	Percent Change
<b>STATIONS</b>	Jul-21	Jul-20	YOY	Feb-20	Current vs Feb-20	Jun-21	MOM	Jul-19	YO2Y
ALLAPATTAH	24,997	25,080	-0.3%	46,868	-46.7%	25,357	-1.4%	43,221	-42.2%
BRICKELL	77,691	75,141	3.4%	152,259	-49.0%	78,739	-1.3%	141,584	-45.1%
BROWNSVILLE	13,574	20,484	-33.7%	21,285	-36.2%	13,525	0.4%	20,345	-33.3%
CIVIC CENTER	60,414	43,468	39.0%	128,921	-53.1%	58,891	2.6%	127,879	-52.8%
COCONUT GROVE	23,761	17,000	39.8%	43,580	-45.5%	24,403	-2.6%	37,039	-35.8%
CULMER	17,682	21,941	-19.4%	33,497	-47.2%	17,214	2.7%	28,883	-38.8%
DADELAND NORTH	55,169	51,481	7.2%	132,894	-58.5%	54,383	1.4%	124,774	-55.8%
DADELAND SOUTH	69,677	64,951	7.3%	162,416	-57.1%	69,123	0.8%	153,423	-54.6%
DOUGLAS ROAD	41,214	24,736	66.6%	82,141	-49.8%	43,049	-4.3%	72,989	-43.5%
DR. MARTIN LUTHER KING, JR.	15,636	18,835	-17.0%	27,980	-44.1%	15,694	-0.4%	26,999	-42.1%
EARLINGTON HEIGHTS	21,202	22,246	-4.7%	40,697	-47.9%	21,058	0.7%	38,058	-44.3%
GOVERNMENT CENTER	99,217	71,380	39.0%	243,414	-59.2%	98,531	0.7%	216,152	-54.1%
HIALEAH	17,348	18,749	-7.5%	29,516	-41.2%	17,908	-3.1%	29,597	-41.4%
MIAMI INTERNATIONAL AIRPORT	19,950	14,283	39.7%	46,115	-56.7%	20,060	-0.5%	41,412	-51.8%
NORTHSIDE	22,784	24,521	-7.1%	36,127	-36.9%	21,543	5.8%	34,222	-33.4%
OKEECHOBEE	14,080	12,578	11.9%	26,026	-45.9%	14,996	-6.1%	26,369	-46.6%
OVERTOWN / ARENA	18,606	17,317	7.4%	49,911	-62.7%	18,217	2.1%	48,634	-61.7%
PALMETTO	18,144	15,774	15.0%	33,944	-46.5%	17,942	1.1%	32,008	-43.3%
SANTA CLARA	10,261	11,214	-8.5%	19,245	-46.7%	10,760	-4.6%	17,232	-40.5%
SOUTH MIAMI	32,014	24,195	32.3%	69,412	-53.9%	32,837	-2.5%	64,028	-50.0%
TRI-RAIL	17,303	17,868	-3.2%	29,120	-40.6%	17,988	-3.8%	27,130	-36.2%
UNIVERSITY	15,151	8,076	87.6%	61,253	-75.3%	14,782	2.5%	39,789	-61.9%
VIZCAYA	16,284	11,645	39.8%	32,497	-49.9%	16,469	-1.1%	27,391	-40.5%
<b>TOTAL</b>	<b>722,159</b>	<b>632,964</b>	<b>14.1%</b>	<b>1,549,118</b>	<b>-53.4%</b>	<b>723,469</b>	<b>-0.2%</b>	<b>1,419,158</b>	<b>-49.1%</b>

**METRORAIL HOLIDAY BOARDINGS BY STATION**  
**Independence Day Holiday (observed 7/5/21)**

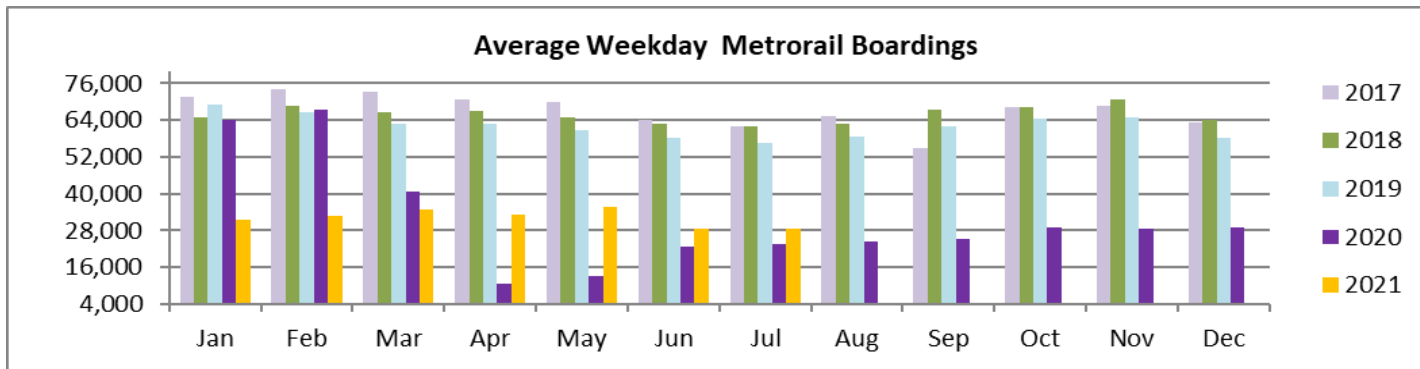
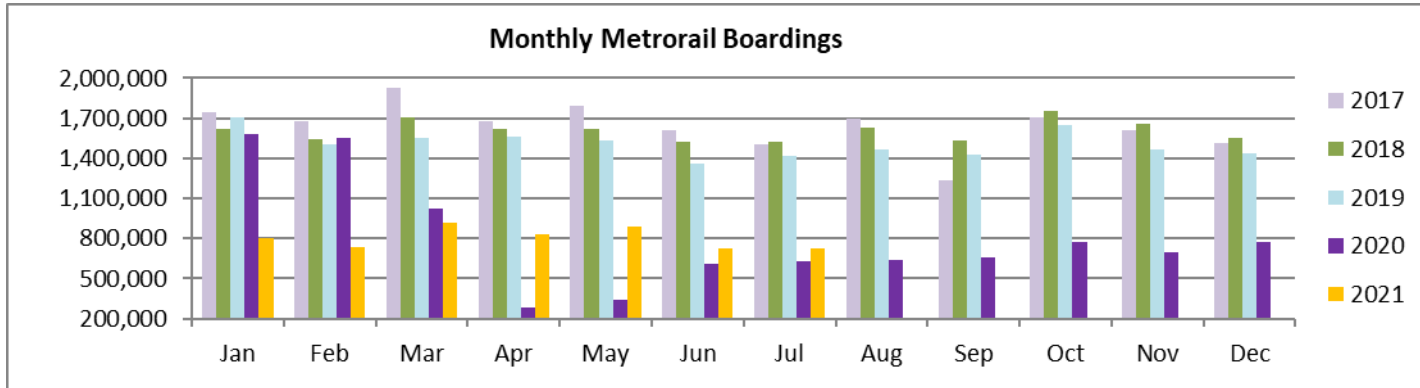
	Independence Day (observed)	Independence Day (observed)	Percent Change
<b>STATIONS</b>	<b>2020</b>	<b>2021</b>	<b>21 vs 20</b>
ALLAPATTAH	781	497	-36.4%
BRICKELL	2,576	1,702	-33.9%
BROWNSVILLE	675	328	-51.4%
CIVIC CENTER	861	575	-33.2%
COCONUT GROVE	524	422	-19.5%
CULMER	680	413	-39.3%
DADELAND NORTH	1,453	833	-42.7%
DADELAND SOUTH	1,883	1,284	-31.8%
DOUGLAS ROAD	755	718	-4.9%
DR. MARTIN LUTHER KING, JR.	693	335	-51.7%
EARLINGTON HEIGHTS	642	462	-28.0%
GOVERNMENT CENTER	1,952	1,641	-15.9%
HIALEAH	567	321	-43.4%
MIAMI INTERNATIONAL AIRPORT	436	746	71.1%
NORTHSIDE	769	535	-30.4%
OKEECHOBEE	353	207	-41.4%
OVERTOWN/ ARENA	473	298	-37.0%
PALMETTO	420	258	-38.6%
SANTA CLARA	345	258	-25.2%
SOUTH MIAMI	694	545	-21.5%
TRI-RAIL	554	391	-29.4%
UNIVERSITY	222	214	-3.6%
VIZCAYA	373	295	-20.9%
<b>TOTAL</b>	<b>18,681</b>	<b>13,278</b>	<b>-28.9%</b>



# METRORAIL CUMULATIVE PERCENTAGE RIDERSHIP SHARE



## TOTAL MONTHLY AND AVERAGE WEEKDAY RIDERSHIP YEAR OVER YEAR COMPARISON CHARTS – METRORAIL

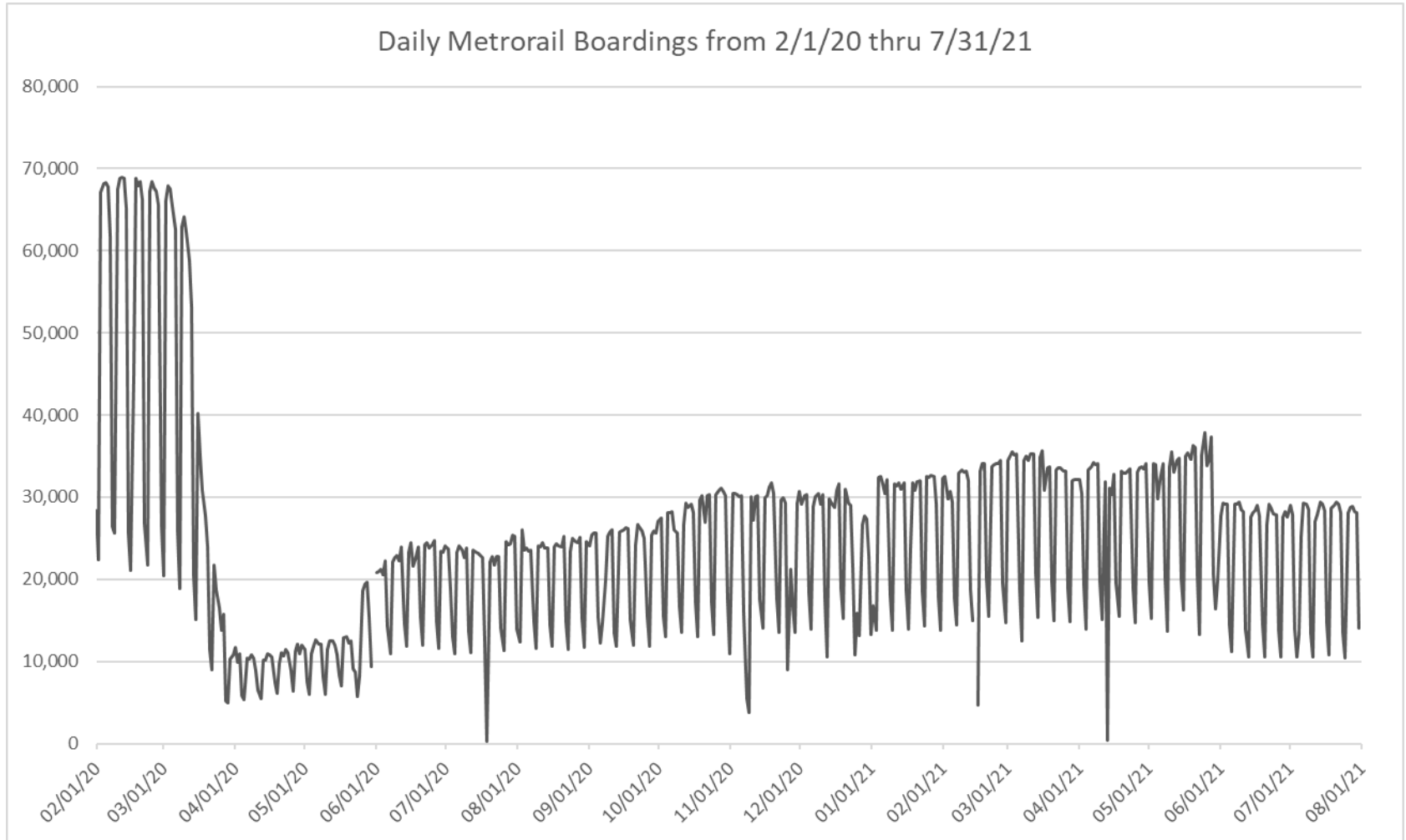


**“TOP 5 / BOTTOM 5” RAIL STATIONS AVERAGE WEEKDAY RIDERSHIP PERFORMANCE  
YEAR OVER YEAR COMPARISONS**

<b>Station</b>	<b>Jul-21</b>	<b>Jul-20</b>	<b>Absolute Delta (1)</b>	<b>Percent Delta</b>
GOVERNMENT CENTER	3,896	2,652	1,244	46.9%
CIVIC CENTER	2,651	1,769	881	49.8%
DOUGLAS ROAD	1,633	912	721	79.0%
DADELAND SOUTH	2,755	2,385	369	15.5%
SOUTH MIAMI	1,259	902	357	39.6%
BROWNSVILLE	506	733	-226	-30.9%
CULMER	670	795	-125	-15.8%
Dr. MARTIN LUTHER KING, JR.	602	671	-69	-10.3%
HIALEAH	667	709	-42	-5.9%
NORTHSIDE	844	875	-31	-3.5%

- (1) Averages rounded to the nearest boarding.
- (2) As a result of the SARS-CoV-2 pandemic, rides were fare-free beginning March 22, 2020; many rail stations continued reporting YOY gains in June 2021, since June 2020 was the fourth month showing clear reduction effects on ridership from the SARS-CoV-2 pandemic. Fares were reinstated June 1, 2021, and ridership data from the faregate system rather than the video camera counter system is utilized from that date going forward.

## DAILY METRORAIL RIDERSHIP SINCE FEBRUARY 1, 2020



- (1) National Emergency was declared on 3/13/20 as a result of the SARS-CoV-2 pandemic.
- (2) There was no Metrobus, Metrorail and Metromover service on 5/31/20, as a safety precaution.
- (3) The dip at the start of the second week of November 2020 is due to Hurricane Eta; these are *raw data* from the Unleash Live contractor AI video system.
- (4) The dip on 4/13/21 is due to a loss of connectivity at all stations, affecting a few stations over the next two days as well.
- (5) The reduction seen beginning 6/1/21 is partly due to the resumption of fares and partly the result of resuming reporting Cubi faregate data rather than video camera counts.
- (6) Periodic (weekly) variations are prominent, since weekday ridership is almost always significantly higher than weekend or holiday ridership.

## METRORAIL PARKING PATRONAGE SUMMARY July 2021

PARK-RIDE LOT	ACTUAL CAPACITY (1)	ACTUAL OCCUPANCY (2)	PERCENT OCCUPANCY
DADELAND SOUTH	1,280		
DADELAND NORTH	1,963		
SOUTH MIAMI	1,081		
UNIVERSITY	260		
DOUGLAS ROAD	150		
COCONUT GROVE	100		
VIZCAYA	120		
CULMER	40		
SANTA CLARA	61		
ALLAPATTAH	74		
EARLINGTON HEIGHTS	361		
BROWNSVILLE	100		
DR. MARTIN LUTHER KING JR. (MDT)	62		
DR. MARTIN LUTHER KING JR. (GARAGE)	631		
NORTHSIDE	197		
HIALEAH	338		
OKEECHOBEE	1,398		
PALMETTO	700		
<b>TOTAL</b>	<b>8,916</b>		

- (1) Number of spaces could vary each week; shown are available spaces during final week of month; the capacities shown here date from March 2020.  
(2) Averages rounded to nearest unit; no counts effected in July 2021 due to reassignment of staff as result of SARS-CoV-2 pandemic.

# Metromover



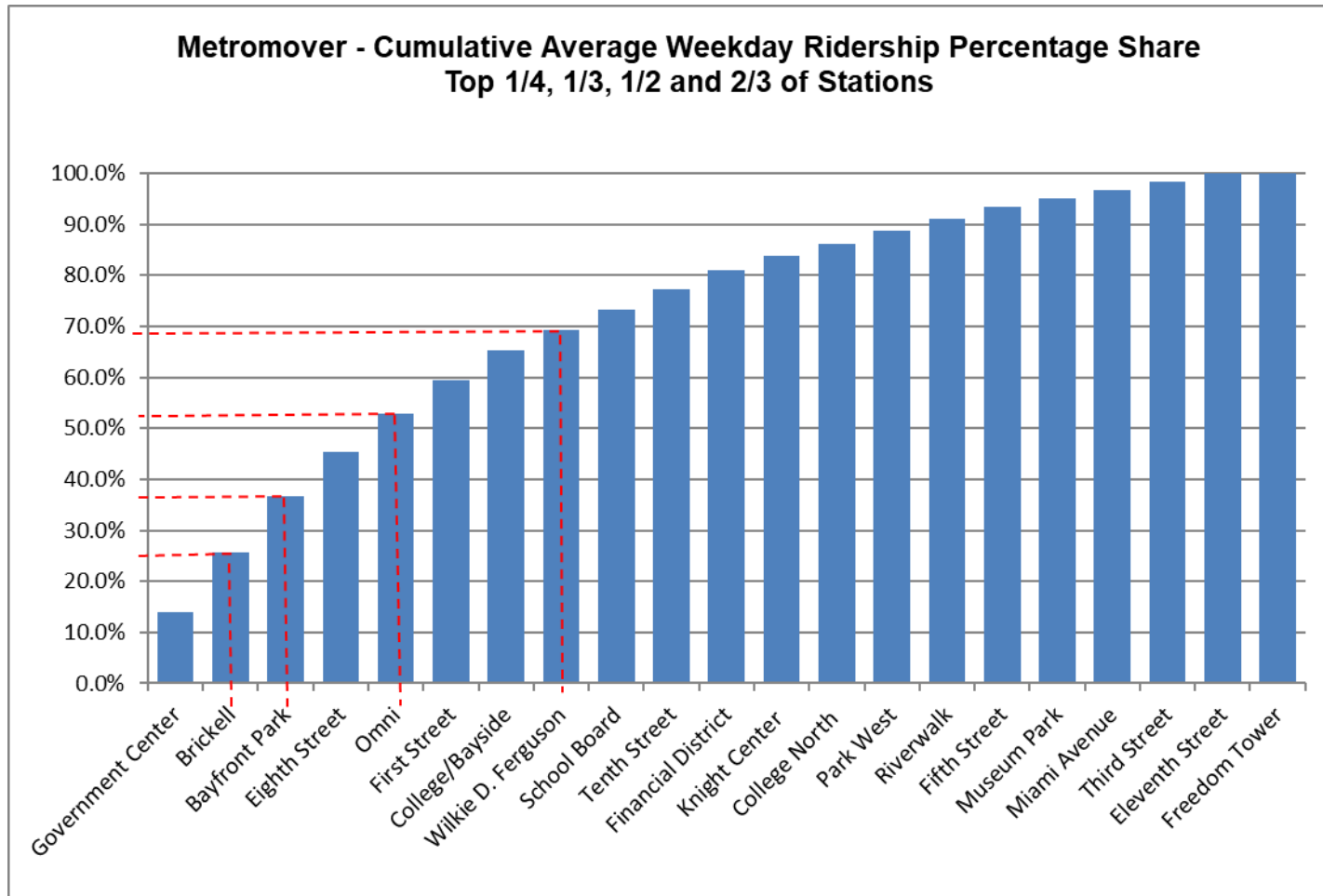
## METROMOVER MONTHLY AND AVERAGE DAILY BOARDINGS BY STATION

	Average Weekday	Average Weekday	Percent Change	Average Saturday	Average Saturday	Percent Change	Average Sunday	Average Sunday	Percent Change	Independence Day (observed)	Independence Day (observed)	Percent Change	Total Monthly	Total Monthly	Percent Change
STATIONS	Jul-21	Jul-20	21 vs 20	Jul-21	Jul-20	21 vs 20	Jul-21	Jul-20	21 vs 20	Jul-21	Jul-20	21 vs 20	Jul-21	Jul-20	21 vs 20
School Board	514	331	55.0%	428	261	64.4%	395	259	52.7%	385	377	2.1%	14,895	9,745	52.8%
Omni	981	551	78.0%	859	497	72.9%	720	430	67.3%	701	459	52.7%	28,472	16,288	74.8%
Museum Park	232	61	281.1%	303	65	366.8%	243	85	185.3%	255	131	94.7%	7,612	2,070	267.7%
Eleventh Street	205	141	45.0%	161	78	106.3%	120	67	78.7%	119	87	36.8%	5,708	3,777	51.1%
Park West	321	158	103.5%	299	89	237.6%	218	114	91.0%	175	108	62.0%	9,284	4,390	111.5%
Freedom Tower		94			68			44			71			2,595	
Government Center	1,817	1,121	62.0%	1,339	883	51.7%	1,111	764	45.4%	1,100			50,386	31,250	61.2%
Miami Avenue	214	248	-13.9%	188	173	8.4%	160	183	-12.3%		227		3,738	7,106	-47.4%
Third Street	212	154	38.4%	173	114	52.1%	148	109	35.7%	163	90	81.1%	6,081	4,359	39.5%
Knight Center	357	217	64.4%	196	176	11.1%	175	131	33.5%	218	228	-4.4%	9,393	6,233	50.7%
Bayfront Park	1,438	744	93.2%	1,276	586	117.9%	1,180	516	128.7%	829	677	22.5%	42,123	21,456	96.3%
First Street	837	595	40.6%	688	456	50.9%	614	423	45.0%	606	620	-2.3%	24,076	17,232	39.7%
College/Bayside	783	292	168.1%	814	174	369.0%	655	164	299.1%	596	426	39.9%	20,566	8,202	150.7%
College North	327	154	112.6%	244	97	152.6%	145	72	103.1%	129	83	55.4%	8,804	4,142	112.6%
Wilkie D. Ferguson	517	246	109.6%	399	176	126.5%	290	165	76.0%	347	212	63.7%	14,351	6,997	105.1%
Riverwalk	304	136	124.3%	228	106	115.6%	212	96	121.4%	250	134	86.6%	8,630	3,925	119.9%
Fifth Street	303	149	103.3%	225	102	121.3%	196	92	114.5%	180	155	16.1%	8,463	4,212	100.9%
Eighth Street	1,134	341	232.7%	1,089	318	242.6%	944	267	254.0%	742	480	54.6%	33,773	10,315	227.4%
Tenth Street	512	261	95.8%	398	196	103.6%	344	175	97.1%	236	205	15.1%	14,347	7,435	93.0%
Brickell	1,545	1,056	46.3%	1,351	820	64.7%	1,113	760	46.4%	944	1,233	-23.4%	44,588	30,786	44.8%
Financial District	498	292	70.8%	328	183	79.7%	274	169	62.0%	364	262	38.9%	13,557	8,081	67.8%
<b>TOTAL</b>	<b>13,049</b>	<b>7,343</b>	<b>77.7%</b>	<b>10,988</b>	<b>5,615</b>	<b>95.7%</b>	<b>9,255</b>	<b>5,083</b>	<b>82.1%</b>	<b>8,339</b>	<b>6,265</b>	<b>33.1%</b>	<b>368,847</b>	<b>210,596</b>	<b>75.1%</b>

(1) Freedom Tower Station was closed for construction throughout July 2021.

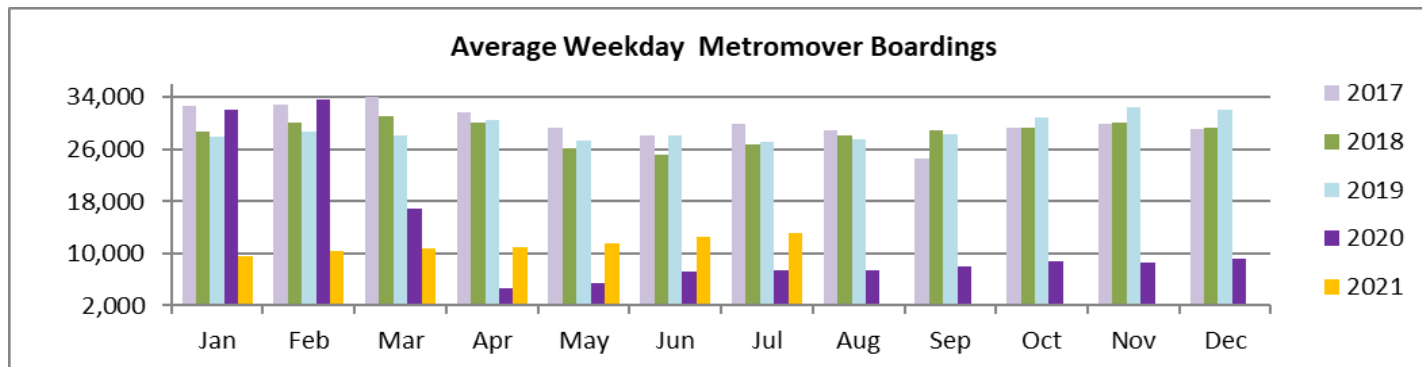
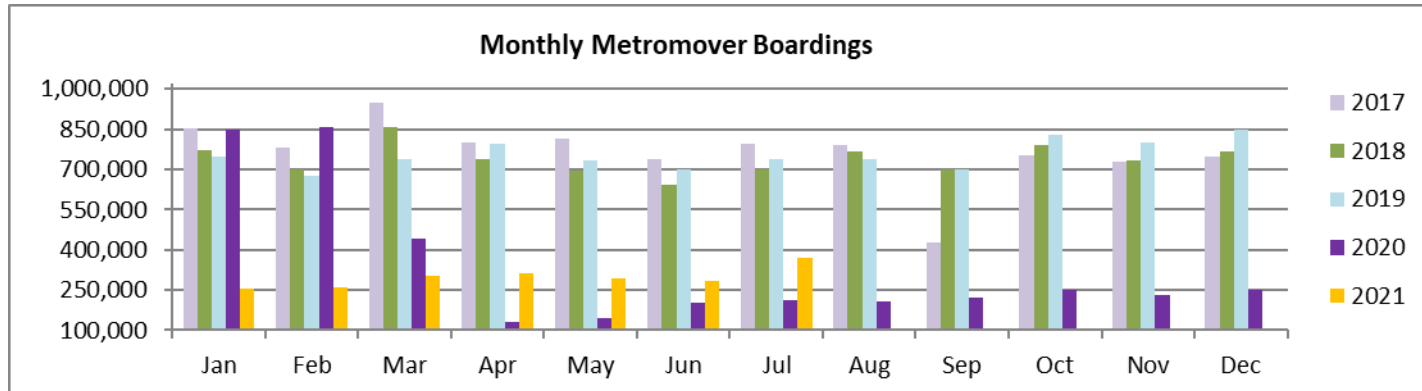
(\*) APC system did not report boardings data at several stations on several days in July 2021; the average daily rider ship calculations take this into account.

## METROMOVER CUMULATIVE PERCENTAGE RIDERSHIP SHARE





## TOTAL MONTHLY AND AVERAGE WEEKDAY RIDERSHIP YEAR OVER YEAR COMPARISON CHARTS – METROMOVER



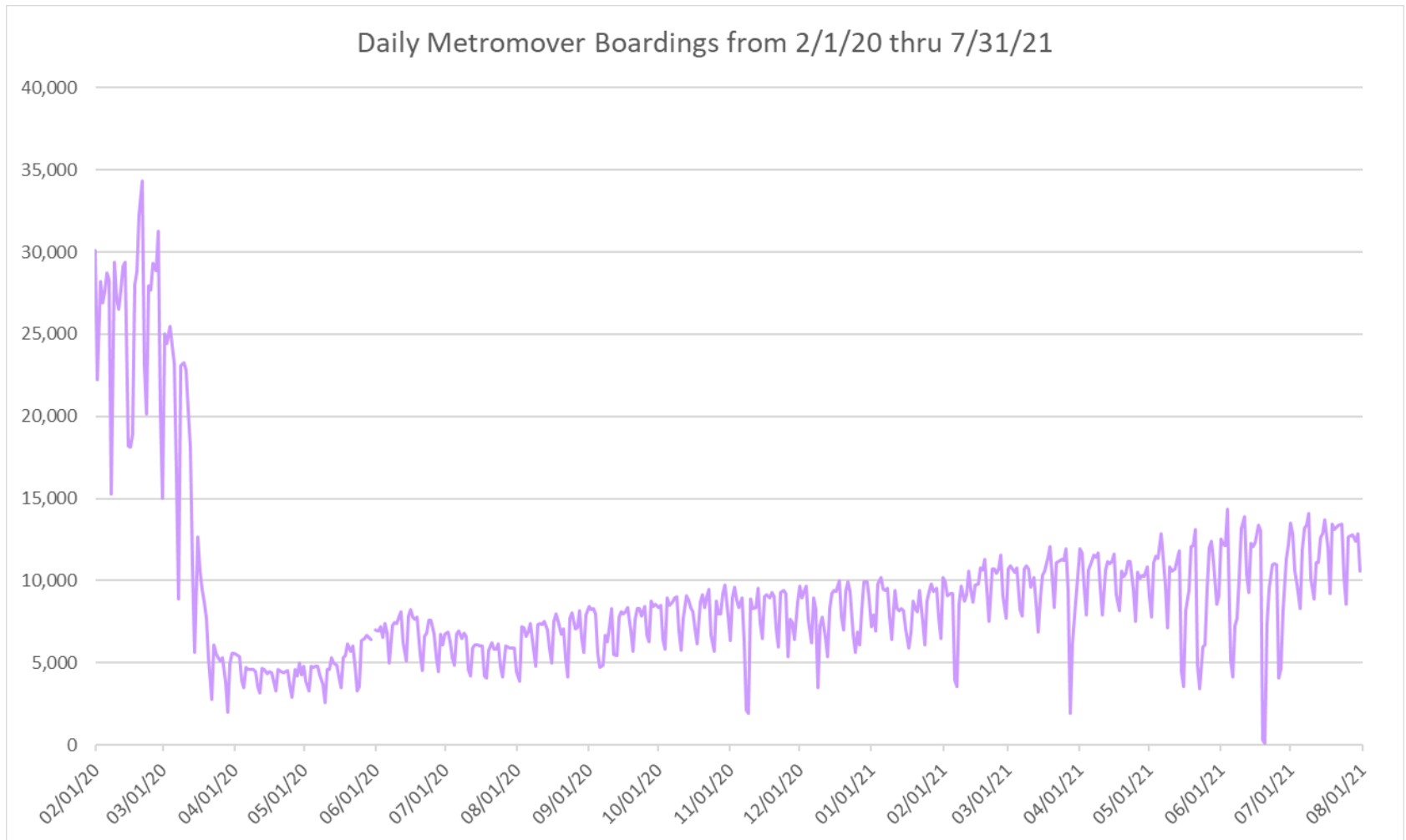
**“TOP 5 / BOTTOM 5” MOVER STATIONS AVERAGE WEEKDAY RIDERSHIP PERFORMANCE  
YEAR OVER YEAR COMPARISONS**

<b>Station</b>	<b>Jul-21</b>	<b>Jul-20</b>	<b>Absolute Delta (1)</b>	<b>Percent Delta</b>
Eighth Street	1,134	341	793	232.7%
Government Center	1,817	1,121	696	62.0%
Bayfront Park	1,438	744	694	93.2%
College/Bayside	783	292	491	168.1%
Brickell	1,545	1,056	489	46.3%
Miami Avenue	214	248	-35	-13.9%
Third Street	212	154	59	38.4%
Eleventh Street	205	141	64	45.0%
Knight Center	357	217	140	64.4%
Fifth Street	303	149	154	103.3%

(1) Averages rounded to the nearest boarding.

(†) Nearly all Metromover stations reporting YOY gains in July 2021, as July 2020 showed clear reduction effects on ridership from the SARS-CoV-2 pandemic.

## DAILY METROMOVER RIDERSHIP SINCE FEBRUARY 1, 2020



- (1) National Emergency was declared on 3/13/20 as a result of the SARS-CoV-2 pandemic.
- (2) There was no Metrobus, Metrorail and Metromoverservice on 5/31/20, as a safety precaution.
- (3) The dip at the start of the second week of November 2020 is due to Hurricane Eta; these are *raw data* from the UTA contractor APC system. Other more recent dips are due to various station closures (mostly on weekends) for system maintenance purposes.
- (4) Periodic (weekly) variations are prominent, since weekday ridership is almost always significantly higher than weekend or holiday ridership.

## Special Transportation Services

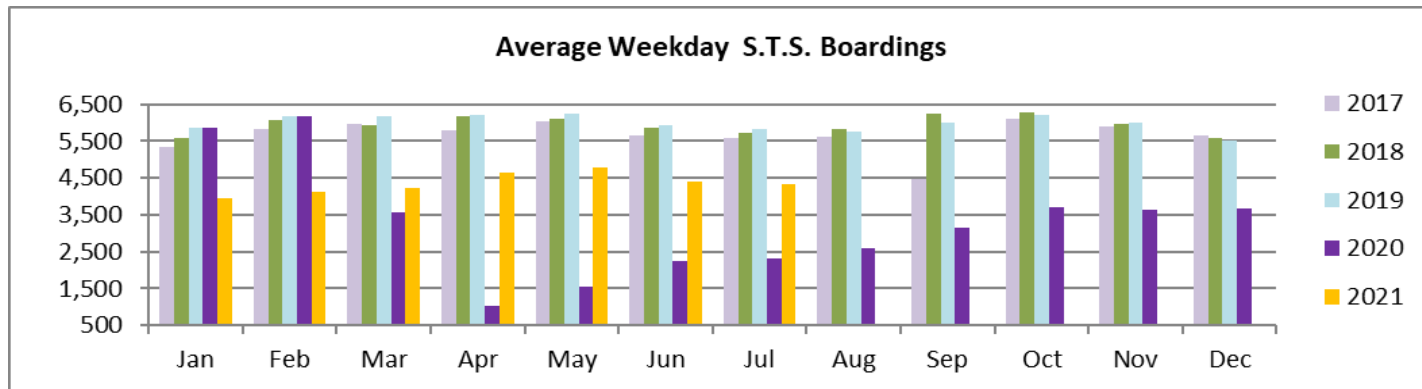
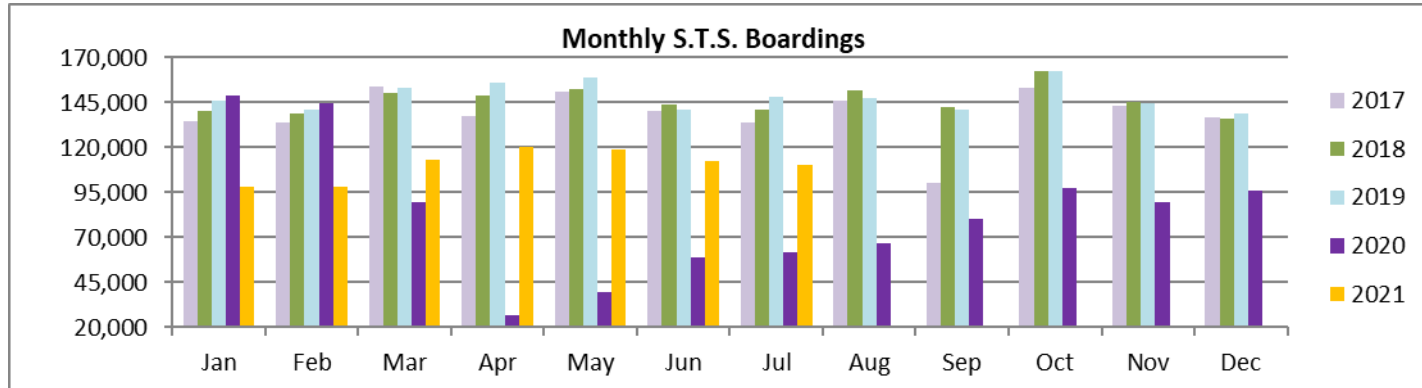


## STS MONTHLY AND AVERAGE DAILY BOARDINGS July 2021

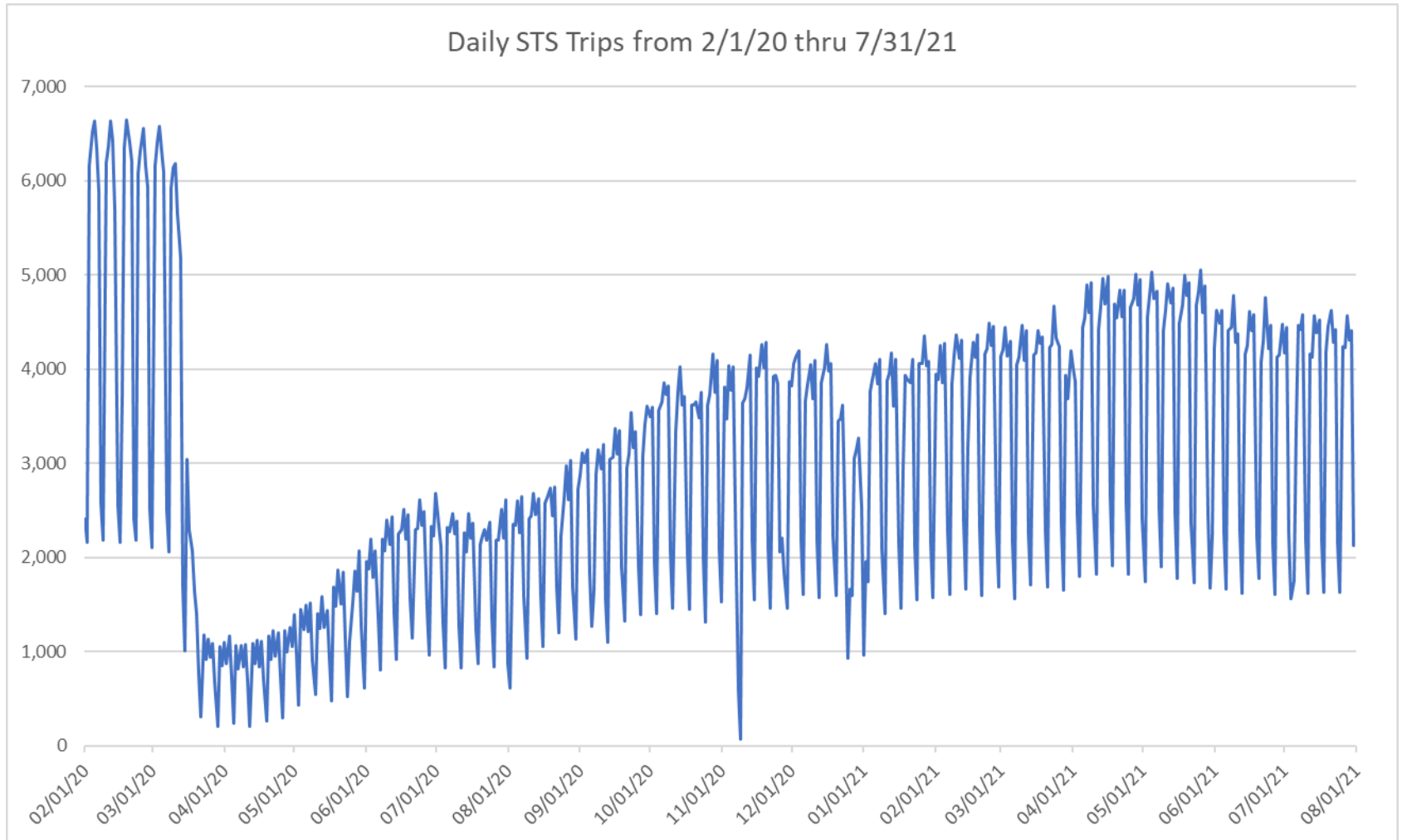
Measure	timeline	Ambulatory	Wheelchair	Total Clients (*)
<b>Average Weekday</b>	Jul-21	3,546	785	<b>4,331</b>
<b>Average Saturday</b>	Jul-21	1,767	413	<b>2,180</b>
<b>Average Sunday</b>	Jul-21	1,354	286	<b>1,641</b>
<b>Total Monthly</b>	<b>Jul-21</b>	<b>90,077</b>	<b>19,982</b>	<b>110,059</b>
<b>Average Weekday</b>	Jul-20	1,871	439	<b>2,310</b>
<b>Average Saturday</b>	Jul-20	1,080	241	<b>1,321</b>
<b>Average Sunday</b>	Jul-20	726	114	<b>840</b>
<b>Total Monthly</b>	<b>Jul-20</b>	<b>50,256</b>	<b>11,509</b>	<b>61,765</b>
<b>Average Weekday</b>	Jul-19	4,639	1,172	<b>5,811</b>
<b>Average Saturday</b>	Jul-19	1,934	534	<b>2,468</b>
<b>Average Sunday</b>	Jul-19	1,607	498	<b>2,104</b>
<b>Total Monthly</b>	<b>Jul-19</b>	<b>117,823</b>	<b>30,409</b>	<b>148,232</b>
<b>% Change Current v.s. Jul 2020 Weekday</b>		89.5%	78.9%	87.5%
<b>% Change Current v.s. Jul 2020 Saturday</b>		63.6%	71.5%	65.1%
<b>% Change Current v.s. Jul 2020 Sunday</b>		86.5%	151.2%	95.3%
<b>% Change Current v.s. Jul 2020 Month Total</b>		<b>79.2%</b>	<b>73.6%</b>	<b>78.2%</b>
<b>% Change Current v.s. Jul 2019 Weekday</b>		-23.6%	-33.0%	-25.5%
<b>% Change Current v.s. Jul 2019 Saturday</b>		-8.6%	-22.7%	-11.7%
<b>% Change Current v.s. Jul 2019 Sunday</b>		-15.7%	-42.5%	-22.0%
<b>% Change Current v.s. Jul 2019 Month Total</b>		<b>-23.5%</b>	<b>-34.3%</b>	<b>-25.8%</b>

(\*) Trip count data provided by STS contractor.

## TOTAL MONTHLY AND AVERAGE WEEKDAY RIDERSHIP YEAR OVER YEAR COMPARISON CHARTS – SPECIAL TRANSPORTATION SERVICES (S.T.S.)



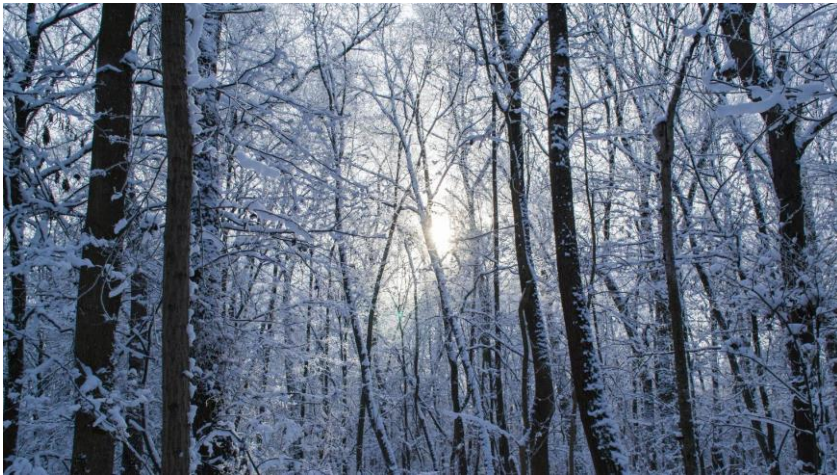
## DAILY STS RIDERSHIP SINCE FEBRUARY 1, 2020



- (1) National Emergency was declared on 3/13/20 as a result of the SARS-CoV-2 pandemic.
- (2) The dip at the start of the second week of November 2020 is due to Hurricane Eta.
- (3) Periodic (weekly) variations are prominent, since weekday ridership is almost always significantly higher than weekend or holiday ridership.

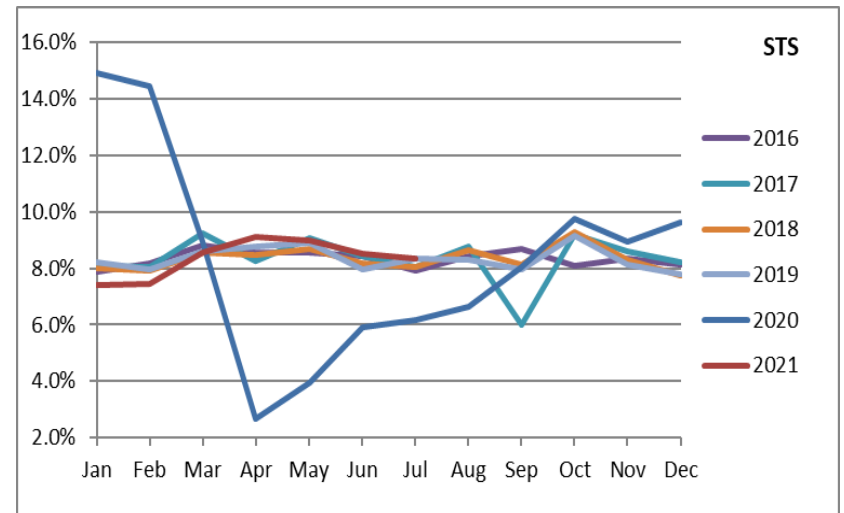
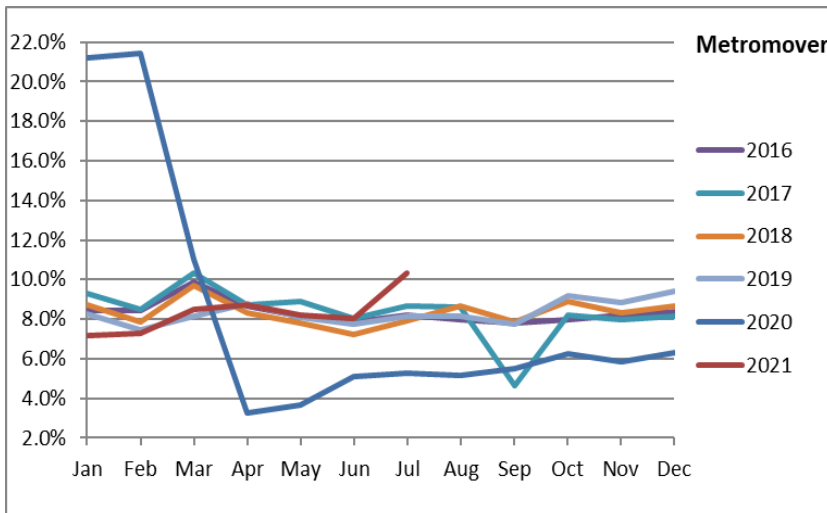
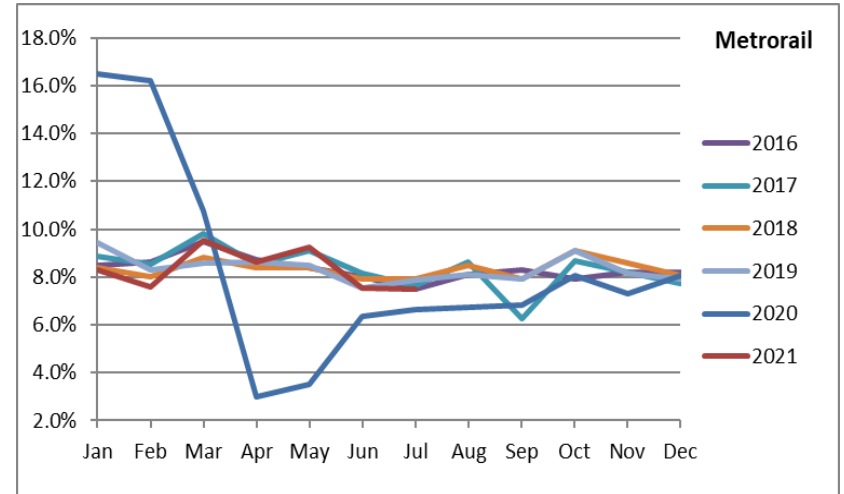
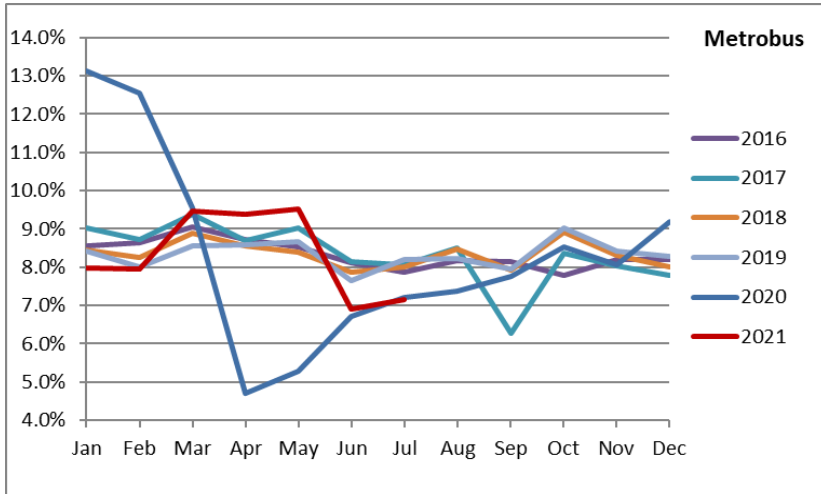


# Ridership Seasonality





# RIDERSHIP SEASONALITY – PERCENT RIDERSHIP SHARE BY MONTH AND CALENDAR YEAR FOR EACH MODE



Note: the prominent dips seen in the fall of 2017 and beginning in the spring of 2020 are due to Hurricane Irma and the SARS-CoV-2 pandemic, respectively. Reductions in Bus and Rail ridership share seen beginning in June 2021 are due to reinstatement of fares as well changes in reporting tools and datasets, as discussed earlier in this report.