



TRANSPORTATION AND PUBLIC WORKS

RIDERSHIP TECHNICAL REPORT

Division of Performance and Materials Management



January 2022

Table of Contents

<i>Table of Contents</i>	2-3
All Modes Overview	4
Total Monthly Weekday, Saturday and Sunday Monthly Boardings By Mode	5
Average Weekday, Saturday and Sunday Boardings by Mode	6
Metrobus Total Monthly Ridership Comparisons by Fiscal Year	7
Metrorail Total Monthly Ridership Comparisons by Fiscal Year	8
Metromover Total Monthly Ridership Comparisons by Fiscal Year	9
STS Total Monthly Ridership Comparisons by Fiscal Year	10
All-Modes Combined Total Monthly Ridership Comparisons By Fiscal Year	11
All Modes Combined Total Monthly and Average Weekday Ridership – Year over Year Comparison Charts	12
Average Weekday Ridership – Modal Splits	13
Daily Ridership for All Modes Combined since February 1, 2020	14
Metrobus	15
Metrobus Average Weekday Boardings by Route	16-18
Metrobus Average Saturday Boardings by Route	19-20
Metrobus Average Sunday Boardings by Route	21-22
Metrobus Monthly Total Boardings by Route	23-25
Metrobus Holiday Boardings by Route	26
Year-over-Year Bus Ridership by Route Service Type	27-28
Bus Routes as Ranked by Percentage of Average Weekday Ridership	29
Metrobus Cumulative Percentage Average Weekday Ridership Share by Route (Top 75%)	30
Total Monthly and Average Weekday Bus Ridership – Year over Year Comparison Charts	31
Bus “Top 5 / Bottom 5” Routes Average Weekday Ridership Performance	32
Daily Metrobus Ridership since February 1, 2020	33
Metrobus Parking Patronage Summary	34

Table of Contents (continued)

Metrorail	35
Metrorail Average Weekday Boardings by Station	36
Metrorail Average Saturday Boardings by Station	37
Metrorail Average Sunday Boardings by Station	38
Metrorail Total Monthly Boardings by Station	39
Metrorail Holiday Boardings	40
Metrorail Cumulative Percentage Average Weekday Ridership Share	41
Total Monthly and Average Weekday Rail Ridership – Year over Year Comparison Charts	42
“Top 5 / Bottom 5” Stations Average Weekday Ridership Performance	43
Daily Metrorail Ridership since February 1, 2020	44
Metrorail Parking Patronage Summary	45
Metromover	46
Monthly and Average Daily Mover Boardings by Station	47
Metromover Cumulative Percentage Average Weekday Ridership Share	48
Total Monthly and Average Weekday Mover Ridership – Year over Year Comparison Charts	49
“Top 5 / Bottom 5” Stations Average Weekday Ridership Performance	50
Daily Metromover Ridership since February 1, 2020	51
Special Transportation Services (STS)	52
STS Monthly and Average Daily Boardings	53
Total Monthly and Average Weekday STS Ridership – Year over Year Comparison Charts	54
Daily STS Ridership since February 1, 2020	55
Ridership Seasonality	56
Ridership Seasonality – Percent Ridership Share by Month and Calendar year for Each Mode	57

All Modes Overview



TOTAL MONTHLY WEEKDAY, SATURDAY AND SUNDAY BOARDINGS BY MODE
January 2022

TRAVEL MODE	MONTH'S TOTAL WEEKDAYS RIDERSHIP	MONTH'S TOTAL SATURDAYS RIDERSHIP	MONTH'S TOTAL SUNDAYS RIDERSHIP	TOTAL MONTHLY RIDERSHIP	% CHANGE vs Jan 2021 TOTAL MONTH RIDERSHIP
METROBUS (1)	2,448,316	329,797	250,942	3,029,055	-1.7%
METRORAIL (2)	696,789	75,773	60,362	832,924	4.2%
METROMOVER (3)	330,360	66,123	55,083	451,566	76.4%
STS PARATRANSIT (4)	83,955	7,471	6,115	97,541	-0.4%
TOTAL	3,559,420	479,164	372,502	4,411,086	4.1%

(*) Total weekday ridership includes Monday, January 17, 2022 (Dr. Martin Luther King, Jr. Birthday Holiday); ridership on that day was as follows:

Metrobus	94,652
Metrorail	23,225
Metromover	14,815
STS	2,204

- (1) Metrobus fares resumed on June 1, 2021, following a 14-month period of fare-free rides as a result of the SARS-CoV-2 pandemic. The NextFare System farebox data replaced the bus automatic passenger counter data as ridership data of record starting on that date.
- (2) Metrorail fares resumed on June 1, 2021, following a 14-month period of fare-free rides as a result of the SARS-CoV-2 pandemic. The NextFare System faregate data replaced the video data as ridership data of record starting on that date.
- (3) Beginning March 13, 2020 (day of National Emergency Declaration due to SARS-CoV-2 pandemic), only raw data from Metromover automatic passenger counters is reported; no estimates are performed after March 13, 2020.
- (4) Paratransit ridership data as reported by the contractor.

AVERAGE WEEKDAY, SATURDAY AND SUNDAY BOARDINGS BY MODE
January 2022

Travel Mode	Average Weekday	Average Saturday	Average Sunday	% Change Jan 2021 Weekday	% Change Jan 2021 Saturday	% Change Jan 2021 Sunday
METROBUS	116,841	66,009	50,322	-0.2%	-16.3%	-13.1%
METRORAIL	33,678	15,155	12,072	6.2%	-16.1%	-13.4%
METROMOVER	15,803	13,270	11,050	65.3%	64.9%	61.4%
STS PARATRANSIT	3,998	1,494	1,223	1.5%	-28.7%	-15.8%
Totals (1)	170,320	95,928	74,667	4.9%	-10.4%	-6.8%

(*) Average weekday ridership includes Dr. Martin Luther King, Jr.'s Birthday for Metrobus and STS but excludes it for Metrorail and Metromover.

(**) Average daily ridership is calculated and published only for those days and stations with nontrivial amounts of reported data.

METROBUS TOTAL MONTHLY RIDERSHIP COMPARISONS BY FISCAL YEAR

Bus	FY 18	FY 19	Variance 18 to 19	FY 20	Variance 19 to 20	FY 21	FY 22	Variance 21 to 22	Variance 19 to 22	Variance 18 to 22
	Oct	4,709,590	4,554,886	-3.3%	4,507,012	-1.1%	2,805,139	3,081,157	9.8%	-32.4%
Nov	4,522,250	4,245,535	-6.1%	4,197,225	-1.1%	2,651,290	3,056,726	15.3%	-28.0%	-32.4%
Dec	4,380,099	4,081,581	-6.8%	4,126,990	1.1%	3,022,530	3,123,883	3.4%	-23.5%	-28.7%
Jan	4,307,001	4,195,911	-2.6%	4,316,998	2.9%	3,082,746	3,029,055	-1.7%	-27.8%	-29.7%
Feb	4,208,811	3,994,019	-5.1%	4,123,083	3.2%	3,076,966				
Mar	4,534,564	4,266,768	-5.9%	3,136,162	-26.5%	3,660,639				
Apr	4,360,997	4,291,135	-1.6%	1,544,316	-64.0%	3,625,048				
May	4,277,628	4,330,922	1.2%	1,734,609	-59.9%	3,683,343				
Jun	4,009,340	3,823,863	-4.6%	2,210,725	-42.2%	2,672,570				
Jul	4,080,664	4,094,906	0.3%	2,366,749	-42.2%	2,769,907				
Aug	4,326,980	4,109,613	-5.0%	2,422,014	-41.1%	2,843,552				
Sep	4,041,992	3,971,220	-1.8%	2,546,923	-35.9%	2,877,110				
FY Total	51,759,916	49,960,359	-3.5%	37,232,806	-25.5%	36,770,840				

METRORAIL TOTAL MONTHLY RIDERSHIP COMPARISONS BY FISCAL YEAR

Rail	FY 18	FY 19	Variance 18 to 19	FY 20	Variance 19 to 20	FY 21	FY 22	Variance 21 to 22	Variance 19 to 22	Variance 18 to 22
Oct	1,708,564	1,757,225	2.8%	1,643,166	-6.5%	769,525	844,383	9.7%	-51.9%	-50.6%
Nov	1,609,888	1,656,929	2.9%	1,469,448	-11.3%	699,492	850,881	21.6%	-48.6%	-47.1%
Dec	1,517,341	1,553,804	2.4%	1,433,928	-7.7%	769,194	860,436	11.9%	-44.6%	-43.3%
Jan	1,615,576	1,708,695	5.8%	1,576,340	-7.7%	799,119	832,924	4.2%	-51.3%	-48.4%
Feb	1,545,581	1,501,458	-2.9%	1,549,118	3.2%	730,792				
Mar	1,700,714	1,554,851	-8.6%	1,027,319	-33.9%	917,097				
Apr	1,619,890	1,559,446	-3.7%	287,803	-81.5%	827,414				
May	1,618,504	1,531,597	-5.4%	337,696	-78.0%	887,111				
Jun	1,524,311	1,359,966	-10.8%	608,758	-55.2%	723,469				
Jul	1,527,380	1,419,158	-7.1%	632,964	-55.4%	722,159				
Aug	1,632,471	1,463,646	-10.3%	641,275	-56.2%	749,578				
Sep	1,530,088	1,427,726	-6.7%	654,244	-54.2%	795,749				
Total	19,150,308	18,494,501	-3.4%	11,862,059	-35.9%	9,390,699				

METROMOVER TOTAL MONTHLY RIDERSHIP COMPARISONS BY FISCAL YEAR

Mover	Variance			Variance			Variance		Variance	
	FY 18	FY 19	18 to 19	FY 20	19 to 20	FY 21	FY 22	21 to 22	19 to 22	18 to 22
Oct	751,323	790,533	5.2%	831,234	5.1%	250,044	389,065	55.6%	-50.8%	-48.2%
Nov	729,519	735,198	0.8%	799,632	8.8%	232,422	418,929	80.2%	-43.0%	-42.6%
Dec	748,797	767,239	2.5%	849,832	10.8%	251,019	450,320	79.4%	-41.3%	-39.9%
Jan	772,122	746,728	-3.3%	847,773	13.5%	255,968	451,566	76.4%	-39.5%	-41.5%
Feb	698,107	675,160	-3.3%	855,398	26.7%	260,332				
Mar	859,143	737,814	-14.1%	441,200	-40.2%	302,502				
Apr	740,036	795,696	7.5%	130,549	-83.6%	310,772				
May	694,106	734,645	5.8%	146,454	-80.1%	292,922				
Jun	641,675	701,318	9.3%	203,637	-71.0%	286,145				
Jul	700,462	739,814	5.6%	210,596	-71.5%	368,847				
Aug	768,728	739,785	-3.8%	205,995	-72.2%	344,319				
Sep	698,505	699,879	0.2%	219,696	-68.6%	331,915				
Total	8,802,523	8,863,809	0.7%	5,741,996	-35.2%	3,487,207				

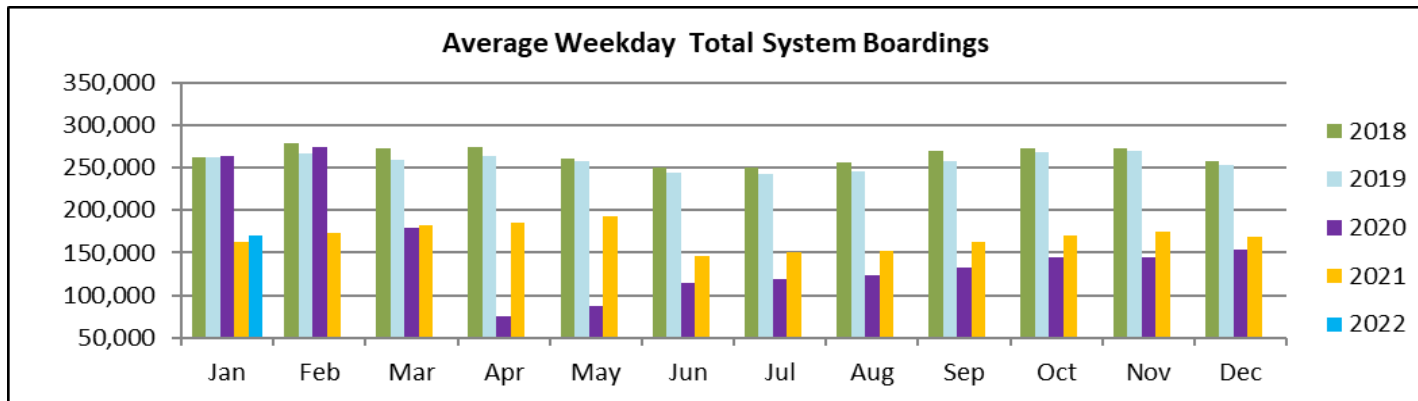
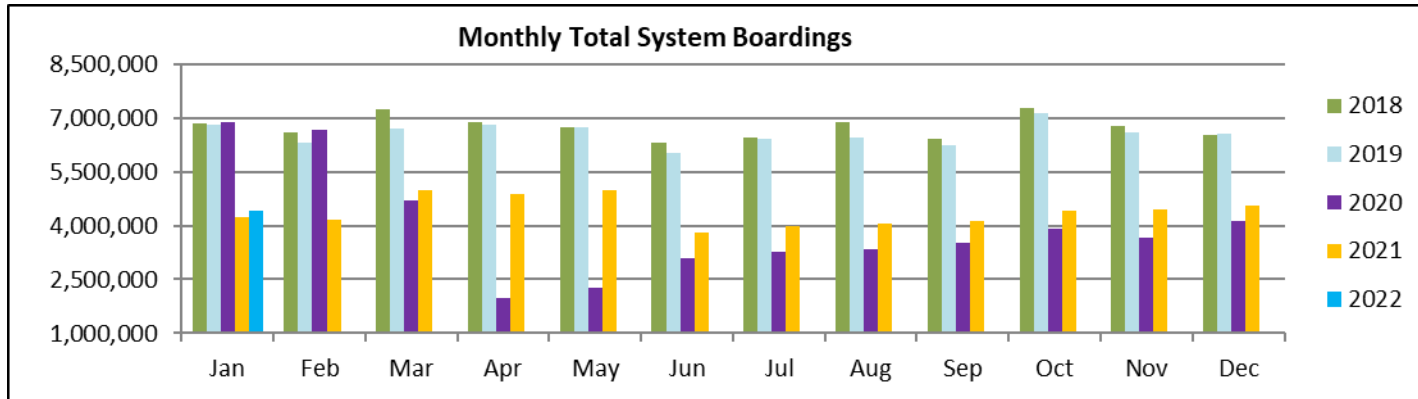
SPECIAL TRANSPORTATION SERVICES (STS) TOTAL MONTHLY RIDERSHIP COMPARISONS BY FISCAL YEAR

STS			Variance					Variance	Variance	Variance
	FY 18	FY 19	18 to 19	FY 20	19 to 20	FY 21	FY 22	21 to 22	19 to 22	18 to 22
Oct	153,409	162,564	6.0%	162,704	0.1%	97,388	115,122	18.2%	-29.2%	-25.0%
Nov	143,375	145,653	1.6%	144,366	-0.9%	89,387	110,289	23.4%	-24.3%	-23.1%
Dec	136,955	136,110	-0.6%	138,642	1.9%	96,366	104,496	8.4%	-23.2%	-23.7%
Jan	140,042	146,268	4.4%	149,114	1.9%	97,928	97,541	-0.4%	-33.3%	-30.3%
Feb	139,032	141,396	1.7%	144,392	2.1%	98,285				
Mar	150,384	153,191	1.9%	89,634	-41.5%	112,930				
Apr	148,879	155,808	4.7%	26,877	-82.7%	120,122				
May	152,164	158,665	4.3%	39,654	-75.0%	118,636				
Jun	143,653	141,320	-1.6%	59,093	-58.2%	112,397				
Jul	141,020	148,232	5.1%	61,765	-58.3%	110,059				
Aug	151,750	147,331	-2.9%	66,563	-54.8%	110,766				
Sep	142,360	141,387	-0.7%	80,346	-43.2%	115,406				
Total	1,743,023	1,777,925	2.0%	1,163,150	-34.6%	1,279,670				

ALL-MODES COMBINED TOTAL MONTHLY RIDERSHIP COMPARISONS BY FISCAL YEAR

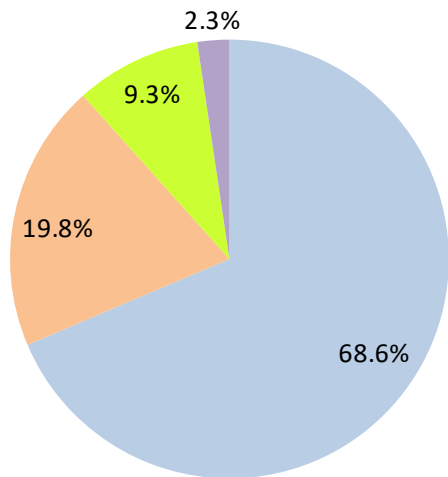
All Modes Month	FY 18	FY 19	FY 20	FY 21	FY 22	Variances					
						18 TO 19	19 TO 20	20 TO 21	21 TO 22	19 TO 22	18 TO 22
Oct	7,322,886	7,265,208	7,144,116	3,922,096	4,429,727	-0.8%	-1.7%	-45.1%	12.9%	-39.0%	-39.5%
Nov	7,005,032	6,783,315	6,610,671	3,672,591	4,436,825	-3.2%	-2.5%	-44.4%	20.8%	-34.6%	-36.7%
Dec	6,783,192	6,538,734	6,549,392	4,139,109	4,539,135	-3.6%	0.2%	-36.8%	9.7%	-30.6%	-33.1%
Jan	6,834,741	6,797,602	6,890,225	4,235,761	4,411,086	-0.5%	1.4%	-38.5%	4.1%	-35.1%	-35.5%
Feb	6,591,531	6,312,033	6,671,991	4,166,375		-4.2%	5.7%	-37.6%			
Mar	7,244,805	6,712,624	4,694,315	4,993,168		-7.3%	-30.1%	6.4%			
Apr	6,869,802	6,802,085	1,989,545	4,883,356		-1.0%	-70.8%	145.5%			
May	6,742,402	6,755,829	2,258,413	4,982,012		0.2%	-66.6%	120.6%			
Jun	6,318,979	6,026,467	3,082,213	3,794,581		-4.6%	-48.9%	23.1%			
Jul	6,449,526	6,402,110	3,272,074	3,970,972		-0.7%	-48.9%	21.4%			
Aug	6,879,929	6,460,375	3,335,847	4,048,215		-6.1%	-48.4%	21.4%			
Sep	6,412,945	6,240,212	3,501,209	4,120,180		-2.7%	-43.9%	17.7%			
FY Total	81,455,770	79,096,594	56,000,011	50,928,416		-2.9%	-29.2%	-9.1%			

TOTAL MONTHLY AND AVERAGE WEEKDAY RIDERSHIP YEAR OVER YEAR COMPARISON CHARTS – ALL MODES COMBINED



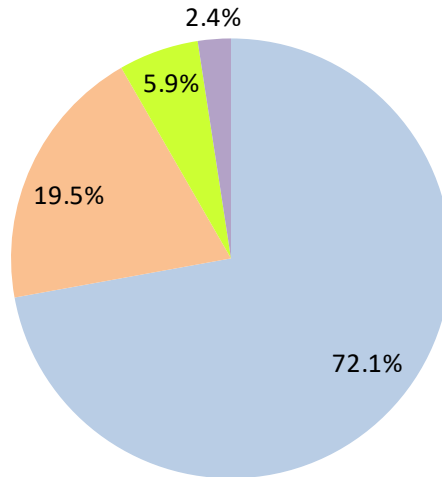
AVERAGE WEEKDAY RIDERSHIP - MODAL SPLITS

January 2022



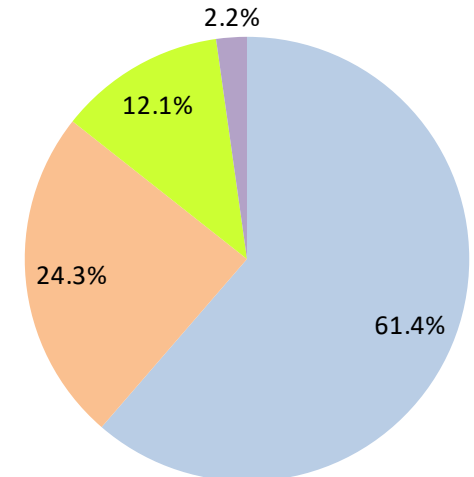
boardings

January 2021



boardings

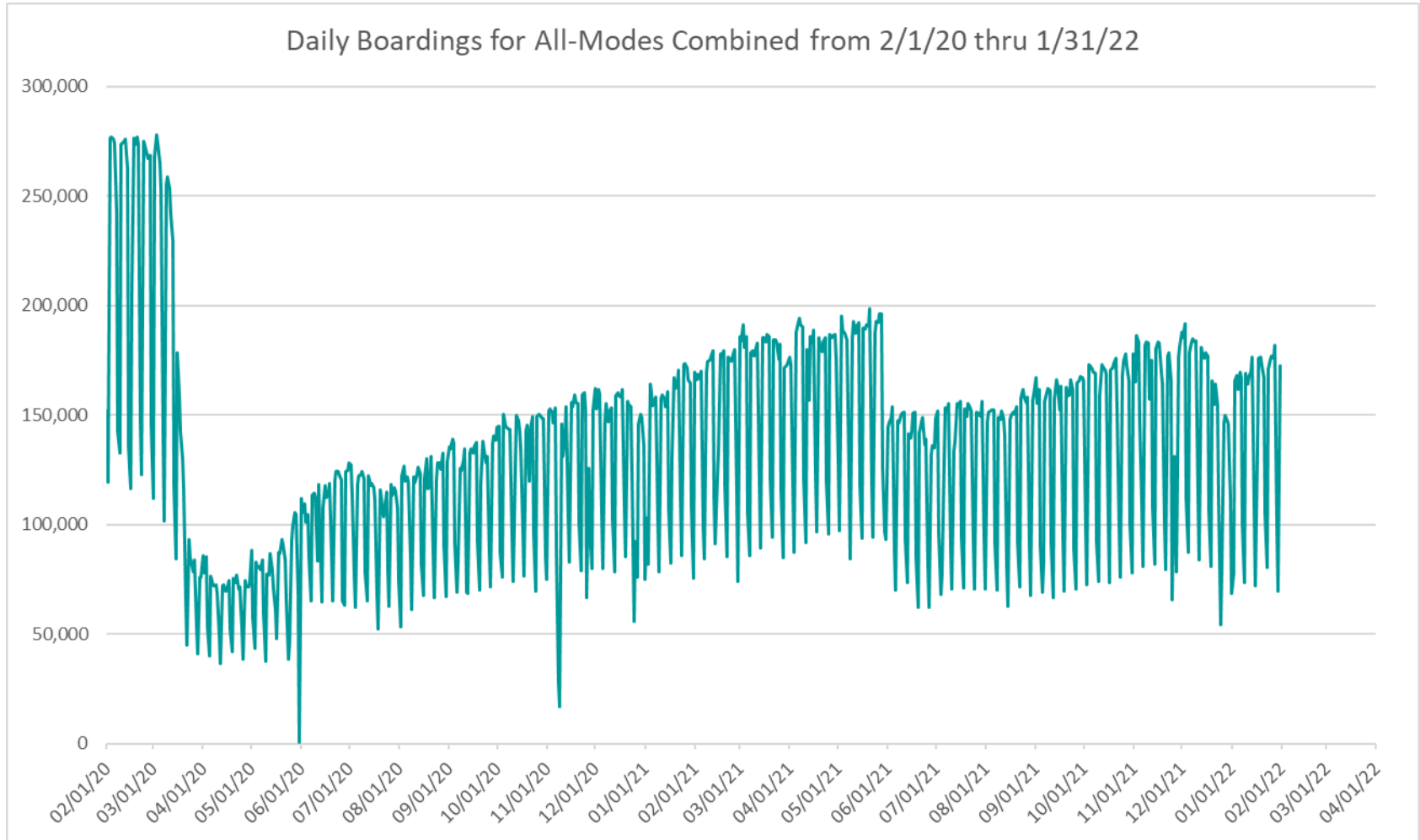
January 2020



boardings



DAILY RIDERSHIP FOR ALL MODES COMBINED SINCE FEBRUARY 1, 2020



- (1) National Emergency was declared on 3/13/20 as a result of the SARS-CoV-2 pandemic.
- (2) There was no Metrobus, Metrorail and Metromover service on 5/31/20, as a safety precaution.
- (3) The dip at the start of the second week of November 2020 is due to Hurricane Eta.
- (4) The reduction seen beginning 6/1/21 is partly due to the resumption of fares for bus and rail, and partly the result of having resumed reporting Cubic farebox data rather than bus APC counts, as well as Cubic rail faregate counts instead of video camera counts on that date.
- (5) Periodic (weekly) variations are prominent, since weekday ridership is almost always significantly higher than weekend or holiday ridership.

Metrobus



METROBUS AVERAGE WEEKDAY BOARDINGS BY ROUTE (†)

Route <i>weekdays</i>	Average Weekday	Average Weekday	Percent Change	Average Weekday	Percent Change	Average Weekday	Percent Change	Average Weekday	Percent Change
	Jan-22	Jan-21	YOY	Feb-20	Current vs Feb-20	Dec-21	MOM	Jan-20	YO2Y
1 (*)	183	174	5.4%	184	-0.5%	158	15.8%	183	0.1%
2	1,867	1,879	-0.7%	3,102	-39.8%	1,789	4.3%	2,328	-19.8%
3	3,618	4,058	-10.8%	5,137	-29.6%	3,487	3.8%	4,952	-26.9%
7	2,534	2,156	17.5%	3,501	-27.6%	2,421	4.7%	3,012	-15.9%
8	3,187	3,183	0.1%	3,909	-18.5%	3,137	1.6%	3,617	-11.9%
9	4,055	5,112	-20.7%	5,528	-26.6%	4,072	-0.4%	5,125	-20.9%
10	1,637	1,408	16.3%	2,482	-34.0%	1,545	6.0%	2,154	-24.0%
11	5,908	5,531	6.8%	7,292	-19.0%	5,823	1.5%	6,882	-14.1%
12	1,731	2,132	-18.8%	2,779	-37.7%	1,763	-1.8%	2,576	-32.8%
16	1,383	1,272	8.8%	1,862	-25.7%	1,328	4.2%	1,774	-22.0%
17	2,668	2,751	-3.0%	3,878	-31.2%	2,486	7.3%	3,770	-29.2%
19	820	975	-15.9%	1,542	-46.8%	813	0.9%	1,422	-42.3%
21	1,176	1,518	-22.6%	1,817	-35.3%	1,192	-1.4%	1,801	-34.7%
22	2,531	2,501	1.2%	3,640	-30.5%	2,377	6.5%	3,586	-29.4%
24 - Coral Way Limited	1,343	1,289	4.2%	1,340	0.3%	1,263	6.4%	1,719	-21.9%
27	4,647	5,346	-13.1%	6,972	-33.3%	4,581	1.4%	6,563	-29.2%
29 (*)	399	352	13.4%	534	-25.3%	337	18.5%	566	-29.4%
31 - BUSWAY LOCAL	643	591	8.8%	1,089	-41.0%	625	2.9%	1,047	-38.6%
32	1,619	1,738	-6.9%	2,390	-32.2%	1,545	4.8%	2,304	-29.7%
33	1,097	1,034	6.1%	1,687	-34.9%	1,070	2.6%	1,634	-32.9%
34 EXPRESS	876	807	8.6%	2,008	-56.4%	820	6.9%	1,845	-52.5%
35	1,420	1,715	-17.2%	2,421	-41.3%	1,416	0.3%	2,413	-41.1%
36	1,953	1,875	4.2%	2,536	-23.0%	1,863	4.8%	2,442	-20.0%
37	2,439	2,535	-3.8%	3,273	-25.5%	2,427	0.5%	3,222	-24.3%
38	3,840	4,242	-9.5%	6,361	-39.6%	3,705	3.7%	6,468	-40.6%
39 EXPRESS	215	204	5.4%	893	-75.9%	247	-13.0%	883	-75.7%
40	1,264	1,135	11.4%	1,772	-28.6%	1,208	4.7%	1,671	-24.3%
42	638	618	3.2%	820	-22.2%	616	3.6%	817	-21.9%
46 - LIBERTY CITY CONN. (*)	18	24	-23.0%	41	-54.6%	15	26.5%	34	-45.1%
51 - FLAGLER MAX	2,520	2,222	13.4%	3,109	-18.9%	2,345	7.5%	3,050	-17.4%
52	838	873	-4.0%	1,261	-33.6%	793	5.7%	1,236	-32.2%
54	1,993	2,263	-12.0%	2,940	-32.2%	1,927	3.4%	2,856	-30.2%
55 MARLINS SHUTTLE									
56 (*)	225	168	34.1%	354	-36.2%	192	17.5%	349	-35.4%
57	257	253	1.6%	433	-40.6%	264	-2.5%	384	-32.9%
62	1,175	1,544	-23.9%	1,815	-35.3%	1,199	-2.0%	1,749	-32.8%
71 (*)	444	362	22.6%	711	-37.5%	435	2.0%	656	-32.3%
72 (*)	487	378	28.7%	781	-37.7%	455	7.0%	733	-33.6%

(†) In this table and those which follow, "YOY" stands for "year-over-year", "MOM" for "month-over-month" and "YO2Y" for "year over two years", i.e., current month vs 12 months prior, one month prior, and 24 months prior, respectively.

(*) Contracted routes

(**) Due to effects from the SARS-CoV-2 pandemic; rides were fare-free beginning March 22, 2020; fares were reinstated on June 1, 2021, in part accounting for the drop in ridership from May 2021.

METROBUS AVERAGE WEEKDAY BOARDINGS BY ROUTE

Route weekdays	Average Weekday	Average Weekday	Percent Change	Average Weekday	Percent Change	Average Weekday	Percent Change	Average Weekday	Percent Change
	Jan-22	Jan-21	YOY	Feb-20	Current vs Feb-20	Dec-21	MOM	Jan-20	YO2Y
73	1,823	1,427	27.7%	2,124	-14.2%	1,702	7.1%	2,011	-9.4%
75	829	1,115	-25.6%	1,429	-42.0%	850	-2.4%	1,481	-44.0%
77	5,807	5,842	-0.6%	7,129	-18.5%	5,576	4.1%	7,154	-18.8%
79 STREET MAX	265			361	-26.6%	250	6.0%	355	-25.2%
82 - WESTCHESTER CIRC. (*)	24	26	-6.8%	62	-60.8%	33	-26.3%	55	-56.4%
87	1,169	1,103	6.0%	1,499	-22.0%	1,091	7.2%	1,472	-20.6%
88	1,512	1,438	5.1%	2,076	-27.2%	1,456	3.8%	2,014	-24.9%
93 - BISCAYNE MAX	2,169	1,561	38.9%	3,334	-35.0%	2,175	-0.3%	3,220	-32.6%
95 EXPRESS	573	376	52.2%	1,690	-66.1%	574	-0.2%	1,742	-67.1%
99	1,139	1,022	11.5%	1,473	-22.6%	1,042	9.3%	1,422	-19.9%
101 - A (*)	162	104	55.8%	177	-8.7%	143	13.0%	165	-1.8%
102 - B	1,293	644	100.9%	1,778	-27.3%	1,262	2.4%	1,621	-20.2%
103 - C	248	312	-20.4%	463	-46.4%	227	9.4%	435	-43.0%
104	524	317	65.2%	837	-37.3%	493	6.3%	863	-39.2%
105 - E	923	989	-6.7%	1,287	-28.3%	936	-1.3%	1,259	-26.7%
107 - G	1,184	926	27.9%	1,713	-30.9%	1,181	0.2%	1,656	-28.5%
108 - H	360	384	-6.2%	473	-23.8%	357	0.9%	499	-27.8%
110 - J	1,878	1,991	-5.7%	2,508	-25.1%	1,968	-4.5%	2,563	-26.7%
112 - L	5,956	7,041	-15.4%	7,636	-22.0%	6,091	-2.2%	7,460	-20.2%
113 - M	472	443	6.6%	866	-45.5%	508	-7.2%	818	-42.3%
115 (*)	143	194	-26.3%	180	-20.5%	145	-1.2%	167	-14.0%
119 - S	7,125	7,825	-9.0%	8,970	-20.6%	7,017	1.5%	8,738	-18.5%
120 - BEACH MAX	4,845	4,529	7.0%	6,667	-27.3%	4,989	-2.9%	6,664	-27.3%
132 TRI-RAIL (DORAL)	4	30	-85.4%	16	-72.4%	5	-16.3%	1	279.5%
135	909	777	16.9%	1,399	-35.0%	788	15.3%	1,331	-31.7%
136	127	45	178.6%	126	0.3%	115	10.5%	135	-6.3%
137 - WEST DADE CONN.	1,116	1,018	9.7%	1,626	-31.3%	1,139	-2.0%	1,537	-27.4%
150 - MIAMI BEACH AIRPORT FLYER	1,243	1,089	14.1%	1,867	-33.4%	1,339	-7.2%	1,732	-28.3%
155 - BISCAYNE GARDENS CIRCULATOR (*)	27	34	-18.7%	44	-37.6%	33	-16.3%	42	-35.2%
175 - NW MIAMI-DADE EXPRESS				33				28	
183	2,191	2,406	-8.9%	3,149	-30.4%	2,170	1.0%	3,122	-29.8%
195 EXPRESS - BROWARD BLVD				372				388	
196 EXPRESS - SHERIDAN ST				383				360	
200 - CUTLER BAY LOCAL	73	121	-39.8%	158	-53.8%	97	-25.0%	157	-53.5%
202 - LITTLE HAITI CONN. (*)	100	127	-21.4%	140	-28.6%	109	-8.4%	132	-24.4%
204 KILLIAN KAT	352			1,071	-67.2%	281	25.0%	942	-62.7%

METROBUS AVERAGE WEEKDAY BOARDINGS BY ROUTE

Route <i>weekdays</i>	Average Weekday	Average Weekday	Percent Change	Average Weekday	Percent Change	Average Weekday	Percent Change	Average Weekday	Percent Change
	Jan-22	Jan-21	YOY	Feb-20	Current vs Feb-20	Dec-21	MOM	Jan-20	YO2Y
207 (7st) - LITTLE HAVANA CIRC	1,002	664	50.9%	1,489	-32.7%	1,064	-5.8%	1,550	-35.4%
208 (8st) - LITTLE HAVANA CIRC	907	752	20.6%	1,308	-30.6%	983	-7.7%	1,402	-35.3%
210 - SKYLAKE CIRC (*)	289	304	-4.7%	282	2.7%	299	-3.3%	275	5.2%
211 - OVERTOWN CIRC. (*)	80	52	54.2%	58	38.6%	86	-6.2%	59	35.6%
212 - SWEETWATER CIRC. (*)	30	10	212.2%	15	105.3%	25	19.3%	13	138.8%
217 - BUNCHE PARK CIRC (*)	66	65	0.5%	97	-32.5%	56	16.5%	88	-25.0%
238 EAST/WEST CONN.	350	281	24.6%	449	-22.2%	366	-4.4%	455	-23.1%
241 TUTTLE LIMITED	60					42	42.0%		
246 - NIGHT OWL	32	77	-58.0%	94	-65.5%	29	12.2%	98	-66.9%
248 - PRINCETON CIRCULATOR (*)	79	69	15.0%	135	-41.2%	64	23.6%	128	-38.2%
252 - CORAL REEF MAX	547	449	21.7%	851	-35.8%	512	6.7%	830	-34.2%
254 - BROWNSVILLE CIRC. (*)	8	14	-43.9%	19	-58.8%	7	15.8%	17	-54.5%
267 - LUDLAM LIMITED (*)	106	88	19.4%	149	-29.1%	92	15.0%	136	-22.4%
272 SUNSET KAT (*)	264	239	10.3%	550	-52.1%	269	-1.8%	508	-48.1%
277 - 7th AVENUE MAX	436	484	-9.8%	683	-36.2%	417	4.7%	640	-31.8%
286 - NORTH POINTE CIRC. (*)	17	33	-48.2%	97	-82.5%	35	-51.0%	102	-83.4%
287 - SAGA BAY MAX	172	156	10.4%	358	-51.9%	175	-1.6%	345	-50.1%
288 - KENDALL CRUISER	327			762	-57.1%	286	14.4%	753	-56.6%
295 EXPRESS - BROWARD BLVD - CIVIC CENTER				233				209	
296 EXPRESS - SHERIDAN ST - CIVIC CENTER				215				222	
297-27th AVENUE ORANGE MAX	779	788	-1.2%	1,356	-42.6%	772	0.8%	1,346	-42.2%
301 DADE-MONROE EXPRESS(*)	756	848	-10.9%	841	-10.2%	755	0.1%	856	-11.8%
302 CARD SOUND EXPRESS(*)	66	77	-15.2%	86	-24.0%	67	-2.2%	86	-23.9%
344 (*)	52	74	-29.7%	96	-46.0%	44	18.1%	96	-45.9%
500	11	55	-80.8%	81	-87.0%	6	72.9%	39	-72.7%
836 EXPRESS	109					109	0.3%		
GREEN HILLS SHUTTLE (*)	8	5	52.4%	9	-11.1%	4	113.3%	5	52.4%
KINGS CREEK SHUTTLE (*)	17	6	175.0%	13	26.9%	13	28.9%	30	-44.6%
SIERRALAKES SHUTTLE (*)	17	17	0.0%	45	-63.3%	17	-4.1%	19	-14.1%
ROBERT SHARP SHUTTLE (*)	21	20	3.8%	10	115.8%	22	-5.1%	5	290.5%
AHEPA SHUTTLE (*)	21	25	-14.3%	21	1.2%	21	0.0%	20	4.0%
Total	116,841	117,123	-0.2%	167,711	-30.3%	114,511	2.0%	161,892	-27.8%

(*) The following routes are entirely operated under contract: 1, 29, 46, 56, 71, 72, 82, 101-A, 115, 155, 202, 210, 211, 212, 217, 246, 248, 254, 267, 272, 286, 301, 302 and 344.

(1) Includes shuttles and those routes which were not run both years.

(2) Several express routes were suspended beginning at the end of March 2020, due to the SARS-CoV-2 pandemic, while other routes had alignment and schedule modifications made to them, in an ongoing effort to optimize service delivery.

METROBUS AVERAGE SATURDAY BOARDINGS BY ROUTE

Route	Average Saturday	Average Saturday	Percent Change	Average Saturday	Percent Change	Average Saturday	Percent Change	Average Saturday	Percent Change
	Jan-22	Jan-21	YOY	Feb-20	Current vs Feb-20	Dec-21	MOM	Jan-20	YO2Y
Saturdays									
1 (*)	98	213	-54.1%	215	-54.6%	116	-15.9%	244	-60.0%
2	859	1,036	-17.1%	1,616	-46.9%	984	-12.7%	1,473	-41.7%
3	3,447	3,842	-10.3%	5,229	-34.1%	3,598	-4.2%	5,440	-36.6%
7	1,308	1,357	-3.6%	1,887	-30.7%	1,342	-2.5%	1,822	-28.2%
8	1,671	2,010	-16.8%	2,027	-17.6%	1,683	-0.7%	2,000	-16.4%
9	2,374	2,910	-18.4%	3,034	-21.7%	2,160	9.9%	3,192	-25.6%
10	1,339	1,497	-10.5%	1,896	-29.4%	1,227	9.1%	1,855	-27.8%
11	3,719	4,051	-8.2%	5,182	-28.2%	3,627	2.6%	5,301	-29.8%
16	1,065	1,293	-17.6%	1,566	-32.0%	1,062	0.4%	1,578	-32.5%
17	1,456	1,825	-20.2%	2,363	-38.4%	1,556	-6.4%	2,551	-42.9%
22	1,360	1,564	-13.1%	2,084	-34.7%	1,436	-5.3%	2,234	-39.1%
24 - Coral Way Limited	846	1,145	-26.1%	1,165	-27.4%	789	7.3%	1,288	-34.3%
27	2,545	3,655	-30.4%	4,034	-36.9%	2,532	0.5%	4,379	-41.9%
31 - BUSWAY LOCAL	465	848	-45.1%	896	-48.0%	569	-18.1%	814	-42.8%
32	683	873	-21.8%	1,029	-33.6%	695	-1.7%	1,115	-38.7%
33	611	815	-25.0%	951	-35.7%	650	-5.9%	1,010	-39.5%
35	880	1,135	-22.4%	1,372	-35.8%	888	-0.8%	1,143	-23.0%
36	1,066	1,495	-28.7%	1,289	-17.3%	1,015	5.1%	1,377	-22.6%
37	1,371	1,710	-19.8%	2,090	-34.4%	1,451	-5.5%	2,235	-38.7%
38	2,935	3,659	-19.8%	4,715	-37.8%	2,854	2.8%	5,065	-42.1%
40	446	488	-8.5%	655	-31.8%	508	-12.0%	665	-32.8%
42	357	575	-38.0%	552	-35.4%	376	-5.0%	588	-39.3%
52	356	609	-41.5%	686	-48.1%	357	-0.1%	669	-46.8%
54	1,132	1,600	-29.3%	1,727	-34.4%	1,159	-2.3%	1,883	-39.9%
55 MARLINS SHUTTLE									
62	815	1,207	-32.5%	1,343	-39.3%	767	6.3%	1,395	-41.5%
71 (*)	135	195	-30.9%	252	-46.4%	143	-5.6%	297	-54.6%
72 (*)	245	265	-7.5%	350	-29.8%	254	-3.4%	400	-38.7%
73	793	726	9.3%	860	-7.8%	807	-1.6%	1,006	-21.1%
75	271	416	-34.9%	468	-42.2%	332	-18.4%	535	-49.4%
77	3,402	3,223	5.5%	4,197	-19.0%	3,351	1.5%	4,357	-21.9%
87	312	404	-22.6%	402	-22.4%	355	-12.0%	498	-37.2%
88	1,055	1,224	-13.8%	1,620	-34.9%	1,087	-2.9%	1,740	-39.4%
99	662	862	-23.1%	849	-21.9%	645	2.8%	980	-32.4%

METROBUS AVERAGE SATURDAY BOARDINGS BY ROUTE

Route	Average Saturday	Average Saturday	Percent Change	Average Saturday	Percent Change	Average Saturday	Percent Change	Average Saturday	Percent Change
	Jan-22	Jan-21	YOY	Feb-20	Current vs Feb-20	Dec-21	MOM	Jan-20	YO2Y
Saturdays									
101 - A (*)	52	52	-1.5%	71	-27.1%	55	-6.6%	76	-32.1%
102 - B	614	421	46.0%	851	-27.8%	645	-4.8%	857	-28.4%
103 - C	125	243	-48.8%	315	-60.4%	128	-2.6%	287	-56.6%
104	252	149	68.8%	468	-46.2%	282	-10.6%	541	-53.4%
105 - E	503	635	-20.8%	619	-18.7%	431	16.8%	725	-30.6%
107 - G	869	1,065	-18.4%	1,066	-18.5%	935	-7.0%	1,055	-17.6%
108 - H	268	421	-36.4%	372	-28.1%	235	13.8%	415	-35.5%
110 - J	1,303	1,546	-15.7%	1,952	-33.3%	1,387	-6.0%	2,009	-35.1%
112 - L	4,502	5,611	-19.8%	5,667	-20.6%	4,554	-1.2%	6,177	-27.1%
113 - M	294	387	-24.1%	503	-41.6%	376	-21.8%	483	-39.2%
115 (*)	92	171	-46.3%	82	11.9%	82	11.9%	106	-13.4%
119 - S	5,613	6,552	-14.3%	6,861	-18.2%	5,342	5.1%	7,512	-25.3%
120 - BEACH MAX	3,532	3,389	4.2%	4,744	-25.5%	3,456	2.2%	5,192	-32.0%
135	306	325	-6.0%	539	-43.2%	315	-2.8%	509	-39.9%
137 - WEST DADE CONN.	678	870	-22.1%	1,027	-34.0%	727	-6.7%	1,110	-38.9%
150 - MIAMI BEACH AIRPORT FLYER	1,216	1,067	13.9%	1,604	-24.2%	1,311	-7.3%	1,695	-28.3%
183	1,229	1,478	-16.9%	1,790	-31.3%	1,250	-1.7%	1,915	-35.8%
200 - CUTLER BAY LOCAL	38	107	-64.4%	119	-68.1%	56	-32.1%	145	-73.7%
202 - LITTLE HAITI CONN. (*)	64	110	-42.1%	50	26.7%	73	-13.2%	53	20.0%
207 (7st) - LITTLE HAVANA CIRC	644	769	-16.3%	1,032	-37.7%	756	-14.9%	905	-28.9%
208 (8st) - LITTLE HAVANA CIRC	599	764	-21.6%	1,044	-42.7%	638	-6.1%	1,157	-48.3%
210 - SKYLAKE CIRC (*)	154	165	-7.0%	165	-6.8%	108	42.7%	92	67.6%
241 TUTTLE LIMITED	31					5	516.0%		
246 - NIGHT OWL	52	73	-28.8%	84	-38.6%	35	48.0%	91	-42.8%
252 - CORAL REEF MAX	212	241	-12.2%	302	-29.9%	224	-5.5%	328	-35.5%
286 - NORTH POINTE CIRC. (*)	34	32	6.3%	41	-16.7%	32	7.1%	49	-30.3%
301 DADE-MONROE EXPRESS (*)	744	897	-17.1%	801	-7.1%	658	13.2%	879	-15.3%
302 CARD SOUND EXPRESS (*)	31	72	-57.6%	57	-45.9%	31	-2.1%	60	-49.0%
338 - WEEKEND EXPRESS	124	148	-16.7%	237	-47.8%	126	-1.5%	237	-47.7%
500	8	68	-88.9%	70	-89.1%	7	16.9%	43	-82.2%
12/21 WEEKEND INTERL.	1,700	2,264	-24.9%	2,528	-32.7%	1,677	1.4%	2,551	-33.4%
FEDERATION GARDENSSHUTTLE (*)	20	16	23.2%	28	-28.9%	24	-14.6%	29	-30.3%
Total	66,009	78,880	-16.3%	93,742	-29.6%	66,354	-0.5%	98,464	-33.0%

METROBUS AVERAGE SUNDAY BOARDINGS BY ROUTE

Route	Average Sunday	Average Sunday	Percent Change	Average Sunday	Percent Change	Average Sunday	Percent Change	Average Sunday	Percent Change
	Jan-22	Jan-21	YOY	Feb-20	Current vs Feb-20	Dec-21	MOM	Jan-20	YO2Y
Sundays									
1 (*)	81	154	-47.5%	201	-59.7%	137	-40.8%	179	-54.8%
2	782	668	17.0%	1,335	-41.4%	837	-6.6%	894	-12.5%
3	2,987	3,063	-2.5%	4,353	-31.4%	3,355	-11.0%	4,462	-33.1%
7	1,006	1,018	-1.1%	1,654	-39.2%	1,118	-10.0%	1,294	-22.3%
8	1,213	1,571	-22.8%	1,746	-30.5%	1,532	-20.8%	1,454	-16.5%
9	1,793	2,171	-17.4%	2,549	-29.7%	1,821	-1.5%	2,373	-24.5%
10	976	957	2.0%	1,441	-32.3%	1,114	-12.4%	1,388	-29.7%
11	2,668	2,431	9.7%	3,917	-31.9%	3,019	-11.6%	3,693	-27.7%
16	711	564	26.0%	997	-28.7%	755	-5.9%	966	-26.4%
17	1,098	1,061	3.5%	1,833	-40.1%	1,271	-13.6%	1,683	-34.8%
22	1,114	1,058	5.3%	1,548	-28.0%	1,159	-3.9%	1,526	-27.0%
24 - Coral Way Limited	693	1,082	-36.0%	905	-23.4%	784	-11.6%	995	-30.4%
27	1,693	2,378	-28.8%	2,918	-42.0%	2,149	-21.2%	2,855	-40.7%
31 - BUSWAY LOCAL	361	575	-37.1%	715	-49.5%	426	-15.1%	622	-41.9%
32	389	500	-22.2%	772	-49.6%	469	-17.1%	718	-45.8%
33	330	477	-30.8%	607	-45.5%	433	-23.7%	555	-40.5%
35	621	896	-30.7%	942	-34.1%	736	-15.6%	895	-30.6%
36	728	1,080	-32.6%	1,111	-34.4%	808	-9.8%	1,036	-29.7%
37	1,066	1,195	-10.8%	1,739	-38.7%	1,310	-18.6%	1,676	-36.4%
38	2,562	3,134	-18.3%	4,147	-38.2%	2,673	-4.2%	3,923	-34.7%
40	309	367	-15.6%	447	-30.8%	340	-9.1%	437	-29.3%
42	241	298	-19.0%	416	-42.1%	288	-16.2%	358	-32.7%
52	257	447	-42.5%	466	-44.9%	307	-16.4%	468	-45.1%
54	749	1,040	-28.0%	1,171	-36.1%	891	-16.0%	1,188	-37.0%
55 MARLINS SHUTTLE									
62	473	741	-36.2%	891	-46.9%	531	-10.9%	912	-48.2%
71 (*)	88	162	-45.7%	162	-45.8%	142	-38.2%	138	-36.5%
72 (*)	219	206	6.0%	265	-17.4%	276	-20.9%	271	-19.4%
73	358	397	-9.9%	495	-27.7%	416	-14.0%	445	-19.7%
75	198	251	-21.2%	271	-26.9%	242	-18.3%	274	-27.8%
77	2,207	2,318	-4.8%	2,815	-21.6%	2,234	-1.2%	2,715	-18.7%
87	224	241	-7.2%	319	-29.8%	261	-14.1%	293	-23.4%
88	799	835	-4.3%	1,286	-37.9%	948	-15.7%	1,207	-33.8%
99	467	546	-14.4%	658	-29.0%	516	-9.4%	629	-25.7%

METROBUS AVERAGE SUNDAY BOARDINGS BY ROUTE

Route Sundays	Average Sunday	Average Sunday	Percent Change	Average Sunday	Percent Change	Average Sunday	Percent Change	Average Sunday	Percent Change
	Jan-22	Jan-21	YOY	Feb-20	Current vs Feb-20	Dec-21	MOM	Jan-20	YO2Y
101 - A (*)	43	34	27.7%	56	-22.5%	44	-2.8%	55	-22.1%
102 - B	547	329	66.2%	717	-23.7%	639	-14.4%	716	-23.6%
103 - C	107	160	-33.5%	212	-49.6%	100	7.2%	204	-47.6%
104	180	107	69.0%	317	-43.2%	216	-16.8%	298	-39.6%
105 - E	480	588	-18.3%	616	-22.0%	517	-7.1%	631	-23.8%
107 - G	662	809	-18.1%	895	-26.0%	683	-3.0%	906	-26.9%
108 - H	248	403	-38.6%	328	-24.6%	264	-6.2%	326	-24.1%
110 - J	1,110	1,274	-12.8%	1,638	-32.2%	1,279	-13.1%	1,548	-28.3%
112 - L	3,179	3,630	-12.4%	4,804	-33.8%	3,618	-12.1%	4,700	-32.4%
113 - M	272	224	21.4%	431	-36.8%	369	-26.2%	430	-36.7%
115 (*)	95	169	-43.7%	80	18.8%	89	6.7%	73	30.5%
119 - S	5,398	6,108	-11.6%	7,141	-24.4%	5,618	-3.9%	7,578	-28.8%
120 - BEACH MAX	2,259	2,265	-0.3%	3,469	-34.9%	2,764	-18.2%	3,508	-35.6%
135	230	245	-6.0%	349	-34.1%	220	4.5%	333	-30.9%
137 - WEST DADE CONN.	547	639	-14.4%	879	-37.8%	672	-18.6%	759	-27.9%
150 - MIAMI BEACH AIRPORT FLYER	1,134	1,127	0.7%	1,574	-27.9%	1,264	-10.3%	1,618	-29.9%
183	824	1,198	-31.3%	1,413	-41.7%	1,129	-27.0%	1,275	-35.4%
200 - CUTLER BAY LOCAL	2	53	-97.1%	59	-97.4%			57	-97.4%
202 - LITTLE HAITI CONN. (*)	66	103	-35.2%	39	70.3%	66	0.2%	47	41.3%
207 (7st) - LITTLE HAVANA CIRC	449	534	-16.0%	796	-43.6%	561	-20.0%	628	-28.5%
208 (8st) - LITTLE HAVANA CIRC	366	677	-45.9%	911	-59.8%	540	-32.1%	882	-58.5%
210 - SKYLAKE CIRC (*)	115	122	-5.3%	143	-19.6%	128	-9.8%	169	-32.1%
241 TUTTLE LIMITED	32					21	51.4%		
246 - NIGHT OWL	27	83	-67.2%	87	-68.7%	28	-3.7%	93	-70.8%
252 - CORAL REEF MAX	170	178	-4.2%	199	-14.4%	199	-14.6%	214	-20.5%
301 DADE-MONROE EXPRESS (*)	694	846	-17.9%	751	-7.6%	679	2.3%	803	-13.5%
302 CARD SOUND EXPRESS (*)	48	45	5.4%	57	-16.1%	48	-0.4%	69	-31.1%
338 - WEEKEND EXPRESS	148	112	32.5%	252	-41.2%	175	-15.2%	203	-27.0%
500	9	69	-86.4%	83	-88.6%	8	21.3%	51	-81.4%
12/21 WEEKEND INTERL.	1,306	1,885	-30.7%	2,048	-36.2%	1,451	-10.0%	1,888	-30.8%
Total	50,322	57,894	-13.1%	75,428	-33.3%	56,810	-11.4%	72,585	-30.7%

METROBUS TOTAL MONTHLY BOARDINGS BY ROUTE

Route	Total Month	Total Month	Percent Change	Total Month	Percent Change	Total Month	Percent Change	Total Month	Percent Change
	Jan-22	Jan-21	YOY	Feb-20	Current vs Feb-20	Dec-21	MOM	Jan-20	YO2Y
Monthly Total									
1 (*)	4,738	5,464	-13.3%	5,558	-14.8%	4,648	1.9%	5,899	-19.7%
2	47,408	46,772	1.4%	75,463	-37.2%	48,438	-2.1%	61,583	-23.0%
3	108,146	118,740	-8.9%	146,294	-26.1%	108,013	0.1%	153,012	-29.3%
7	64,777	56,010	15.7%	86,077	-24.7%	65,521	-1.1%	80,010	-19.0%
8	81,355	83,127	-2.1%	95,295	-14.6%	85,006	-4.3%	94,853	-14.2%
9	105,999	129,812	-18.3%	135,924	-22.0%	109,572	-3.3%	137,382	-22.8%
10	45,942	41,376	11.0%	64,874	-29.2%	44,886	2.4%	61,756	-25.6%
11	156,004	145,460	7.2%	187,425	-16.8%	160,503	-2.8%	191,062	-18.3%
12	36,358	42,633	-14.7%	55,585	-34.6%	40,553	-10.3%	56,675	-35.8%
16	37,934	35,285	7.5%	49,061	-22.7%	37,813	0.3%	50,162	-24.4%
17	68,798	70,507	-2.4%	96,715	-28.9%	68,485	0.5%	101,568	-32.3%
19	17,229	19,505	-11.7%	30,847	-44.1%	18,702	-7.9%	31,286	-44.9%
21	24,688	30,360	-18.7%	36,341	-32.1%	27,422	-10.0%	39,613	-37.7%
22	65,520	64,195	2.1%	89,404	-26.7%	65,063	0.7%	95,454	-31.4%
24 - Coral Way Limited	35,897	37,993	-5.5%	36,237	-0.9%	35,329	1.6%	47,946	-25.1%
27	118,778	139,460	-14.8%	171,282	-30.7%	124,084	-4.3%	176,169	-32.6%
29 (*)	8,384	7,044	19.0%	10,684	-21.5%	7,746	8.2%	12,443	-32.6%
31 - BUSWAY LOCAL	17,634	19,511	-9.6%	29,125	-39.5%	18,346	-3.9%	29,405	-40.0%
32	39,361	42,130	-6.6%	56,027	-29.7%	40,188	-2.1%	58,733	-33.0%
33	27,753	27,624	0.5%	40,918	-32.2%	28,942	-4.1%	42,773	-35.1%
34 EXPRESS	18,394	16,137	14.0%	40,159	-54.2%	18,854	-2.4%	40,595	-54.7%
35	37,335	45,348	-17.7%	59,041	-36.8%	39,060	-4.4%	62,130	-39.9%
36	49,978	51,444	-2.8%	61,606	-18.9%	50,141	-0.3%	64,417	-22.4%
37	63,396	66,421	-4.6%	82,870	-23.5%	66,870	-5.2%	88,202	-28.1%
38	108,132	121,927	-11.3%	167,379	-35.4%	107,313	0.8%	182,170	-40.6%
39 EXPRESS	2,793	4,077	-31.5%	17,853	-84.4%	5,677	-50.8%	19,428	-85.6%
40	30,330	27,338	10.9%	40,497	-25.1%	31,171	-2.7%	41,598	-27.1%
42	16,391	17,025	-3.7%	20,825	-21.3%	16,827	-2.6%	22,112	-25.9%
46 - LIBERTY CITY CONN. (*)	388	480	-19.2%	814	-52.3%	336	15.5%	741	-47.6%
51 - FLAGLER MAX	52,926	44,439	19.1%	62,186	-14.9%	53,925	-1.9%	67,107	-21.1%
52	20,665	23,190	-10.9%	30,522	-32.3%	20,893	-1.1%	32,217	-35.9%
54	51,249	59,501	-13.9%	72,125	-28.9%	52,509	-2.4%	76,304	-32.8%
55 MARLINS SHUTTLE									
56 (*)	4,735	3,363	40.8%	7,071	-33.0%	4,415	7.2%	7,673	-38.3%
57	5,407	5,069	6.7%	8,665	-37.6%	6,071	-10.9%	8,441	-35.9%
62	31,120	41,362	-24.8%	46,582	-33.2%	32,763	-5.0%	48,611	-36.0%
71 (*)	10,437	9,190	13.6%	16,118	-35.2%	11,154	-6.4%	16,316	-36.0%
72 (*)	12,537	10,122	23.9%	18,433	-32.0%	12,576	-0.3%	19,078	-34.3%

METROBUS TOTAL MONTHLY BOARDINGS BY ROUTE

Route Monthly Total	Total Month	Total Month	Percent Change	Total Month	Percent Change	Total Month	Percent Change	Total Month	Percent Change
	Jan-22	Jan-21	YOY	Feb-20	Current vs Feb-20	Dec-21	MOM	Jan-20	YO2Y
73	44,027	34,543	27.5%	48,767	-9.7%	44,035	0.0%	50,481	-12.8%
75	19,757	25,892	-23.7%	31,994	-38.2%	21,842	-9.5%	36,091	-45.3%
77	149,990	146,859	2.1%	174,833	-14.2%	150,590	-0.4%	188,385	-20.4%
79 STREET MAX	5,572			7,228	-22.9%	5,758	-3.2%	7,805	-28.6%
82 - WESTCHESTER CIRC. (*)	655	738	-11.2%	1,482	-55.8%	875	-25.1%	1,456	-55.0%
87	27,235	25,531	6.7%	33,273	-18.1%	27,549	-1.1%	35,841	-24.0%
88	41,020	39,894	2.8%	54,772	-25.1%	41,625	-1.5%	57,301	-28.4%
93 - BISCAYNE MAX	45,541	31,222	45.9%	66,684	-31.7%	50,016	-8.9%	70,834	-35.7%
95 EXPRESS	12,026	7,527	59.8%	33,796	-64.4%	13,197	-8.9%	38,318	-68.6%
99	29,573	28,025	5.5%	36,325	-18.6%	28,606	3.4%	38,345	-22.9%
101 - A (*)	3,865	2,538	52.3%	4,114	-6.1%	3,686	4.9%	4,200	-8.0%
102 - B	32,950	16,949	94.4%	42,683	-22.8%	34,157	-3.5%	42,664	-22.8%
103 - C	3,918	8,410	-53.4%	11,682	-66.5%	6,122	-36.0%	11,739	-66.6%
104	13,172	7,734	70.3%	20,351	-35.3%	13,339	-1.3%	22,633	-41.8%
105 - E	24,306	26,490	-8.2%	31,302	-22.4%	25,314	-4.0%	33,758	-28.0%
107 - G	32,514	28,689	13.3%	43,178	-24.7%	33,644	-3.4%	45,186	-28.0%
108 - H	10,140	12,201	-16.9%	12,624	-19.7%	10,204	-0.6%	14,266	-28.9%
110 - J	51,508	55,198	-6.7%	66,481	-22.5%	55,915	-7.9%	72,153	-28.6%
112 - L	163,487	190,657	-14.3%	200,268	-18.4%	172,773	-5.4%	212,322	-23.0%
113 - M	12,737	12,130	5.0%	21,548	-40.9%	14,669	-13.2%	22,080	-42.3%
115 (*)	3,944	5,758	-31.5%	4,334	-9.0%	4,020	-1.9%	4,455	-11.5%
119 - S	204,671	225,921	-9.4%	242,257	-15.5%	205,230	-0.3%	260,172	-21.3%
120 - BEACH MAX	130,698	121,111	7.9%	170,942	-23.5%	139,614	-6.4%	184,908	-29.3%
132 TRI-RAIL (DORAL)	69	562	-87.7%	312	-77.9%	67	3.0%	25	176.0%
135 (*)	21,764	18,642	16.7%	32,067	-32.1%	20,270	7.4%	32,985	-34.0%
136	2,659	909	192.5%	2,524	5.3%	2,636	0.9%	2,974	-10.6%
137 - WEST DADE CONN.	29,568	28,541	3.6%	41,167	-28.2%	31,786	-7.0%	42,053	-29.7%
150 - MIAMI BEACH AIRPORT FLYER	37,846	33,878	11.7%	51,651	-26.7%	41,088	-7.9%	52,978	-28.6%
155 - BISCAYNE GARDENS CIRCULATOR (*)	577	676	-14.6%	881	-34.5%	755	-23.6%	933	-38.2%
175 - NW MIAMI-DADE EXPRESS				661				614	
183	56,279	62,696	-10.2%	77,570	-27.4%	59,413	-5.3%	82,706	-32.0%
195 EXPRESS - BROWARD BLVD				7,441				8,535	
196 EXPRESS - SHERIDAN ST				7,658				7,928	
200 - CUTLER BAY LOCAL	1,505	3,268	-53.9%	3,984	-62.2%	2,265	-33.6%	4,310	-65.1%
202 - LITTLE HAITI CONN. (*)	2,744	3,702	-25.9%	3,200	-14.3%	3,063	-10.4%	3,349	-18.1%
204 KILLIAN KAT	7,384			21,418	-65.5%	6,468	14.2%	20,714	-64.4%

METROBUS TOTAL MONTHLY BOARDINGS BY ROUTE

Route Monthly Total	Total Month	Total Month	Percent Change	Total Month	Percent Change	Total Month	Percent Change	Total Month	Percent Change
	Jan-22	Jan-21	YOY	Feb-20	Current vs Feb-20	Dec-21	MOM	Jan-20	YO2Y
207 (7st) - LITTLE HAVANA CIRC	26,497	20,325	30.4%	38,127	-30.5%	29,730	-10.9%	40,851	-35.1%
208 (8st) - LITTLE HAVANA CIRC	23,869	22,925	4.1%	35,018	-31.8%	27,315	-12.6%	39,879	-40.1%
210 - SKYLAKE CIRC (*)	7,422	7,633	-2.8%	7,033	5.5%	7,824	-5.1%	7,265	2.2%
211 - OVERTOWN CIRC. (*)	1,687	1,042	61.9%	1,159	45.6%	1,970	-14.4%	1,303	29.5%
212 - SWEETWATER CIRC. (*)	636	194	227.8%	295	115.6%	584	8.9%	279	128.0%
217 - BUNCHE PARK CIRC (*)	1,381	1,309	5.5%	1,949	-29.1%	1,298	6.4%	1,929	-28.4%
238 EAST/WEST CONN.	7,344	5,614	30.8%	8,987	-18.3%	8,410	-12.7%	10,008	-26.6%
241 TUTTLE LIMITED	1,574					449	250.6%		
246 - NIGHT OWL	1,073	2,400	-55.3%	2,641	-59.4%	915	17.3%	2,973	-63.9%
248 - PRINCETON CIRCULATOR (*)	1,660	1,375	20.7%	2,690	-38.3%	1,471	12.8%	2,815	-41.0%
252 - CORAL REEF MAX	13,387	11,254	19.0%	19,325	-30.7%	13,477	-0.7%	20,644	-35.2%
254 - BROWNSVILLE CIRC. (*)	166	282	-41.1%	384	-56.8%	157	5.7%	382	-56.5%
267 - LUDLAM LIMITED (*)	2,217	1,768	25.4%	2,978	-25.6%	2,111	5.0%	2,992	-25.9%
272 SUNSET KAT (*)	5,538	4,780	15.9%	11,004	-49.7%	6,178	-10.4%	11,168	-50.4%
277 - 7th AVENUE CIRC.	9,161	9,670	-5.3%	13,669	-33.0%	9,587	-4.4%	14,082	-34.9%
286 - NORTH POINTE CIRC. (*)	526	814	-35.4%	2,145	-75.5%	923	-43.0%	2,444	-78.5%
287 - SAGA BAY MAX	3,616	3,119	15.9%	7,160	-49.5%	4,026	-10.2%	7,597	-52.4%
288 - KENDALL CRUISER	6,870			15,249	-54.9%	6,578	4.4%	16,569	-58.5%
295 EXPRESS - BROWARD BLVD - CIVIC CENTER				4,668				4,588	
296 EXPRESS - SHERIDAN ST - CIVIC CENTER				4,297				4,891	
297-27th AVENUE ORANGE MAX	16,461	15,759	4.5%	27,125	-39.3%	18,024	-8.7%	29,610	-44.4%
301 DADE-MONROE EXPRESS(*)	23,060	26,527	-13.1%	23,838	-3.3%	22,714	1.5%	26,367	-12.5%
302 CARD SOUND EXPRESS(*)	1,769	2,180	-18.9%	2,236	-20.9%	1,859	-4.8%	2,482	-28.7%
338 - WEEKEND EXPRESS	1,359	1,116	21.8%	2,191	-38.0%	1,201	13.2%	1,961	-30.7%
344 (*)	1,088	1,474	-26.2%	1,919	-43.3%	1,009	7.8%	2,108	-48.4%
500	306	1,853	-83.5%	2,301	-86.7%	197	55.3%	1,272	-75.9%
836 EXPRESS	2,298					2,509	-8.4%		
12/21 WEEKEND INTERL.	15,034	22,631	-33.6%	20,830	-27.8%	12,512	20.2%	19,643	-23.5%
GREEN HILLS SHUTTLE (*)	40	21	90.5%	36	11.1%	15	166.7%	21	90.5%
KINGS CREEK SHUTTLE (*)	66	24	175.0%	52	26.9%	64	3.1%	149	-55.7%
SIERRALAKES SHUTTLE (*)	66	66	0.0%	180	-63.3%	86	-23.3%	96	-31.3%
ROBERT SHARP SHUTTLE (*)	82	79	3.8%	38	115.8%	108	-24.1%	21	290.5%
AHEPA SHUTTLE (*)	84	98	-14.3%	83	1.2%	105	-20.0%	101	-16.8%
FEDERATION GARDENSSHUTTLE (*)	101	82	23.2%	142	-28.9%	71	42.3%	87	16.1%
Total	3,029,055	3,082,746	-1.7%	4,123,083	-26.5%	3,123,883	-3.0%	4,316,998	-29.8%

METROBUS HOLIDAY BOARDINGS BY ROUTE Dr. Martin Luther King, Jr.'s Birthday

ROUTES	Dr. MLK, Jr. Birthday 2021	Dr. MLK, Jr. Birthday 2022	Pct Delta	ROUTES	Dr. MLK, Jr. Birthday 2021	Dr. MLK, Jr. Birthday 2022	Pct Delta	ROUTES	Dr. MLK, Jr. Birthday 2021	Dr. MLK, Jr. Birthday 2022	Pct Delta
1	213	206	-3.3%	62	1,201	738	-38.6%	195			
2	1,139	1,380	21.2%	71	319	363	13.8%	196			
3	2,785	3,315	19.0%	72	305	368	20.7%	200	98	79	-19.4%
7	1,706	1,855	8.7%	73	1,188	1,442	21.4%	202	157	108	-31.2%
8	2,850	2,649	-7.1%	75	816	595	-27.1%	204		211	
9	6,008	3,360	-44.1%	77	4,757	4,516	-5.1%	207	274	762	178.1%
10	817	1,726	111.3%	79		194		208	589	852	44.7%
11	5,257	5,137	-2.3%	82	18	26	44.4%	210	330	294	-10.9%
12	1,672	1,276	-23.7%	87	757	957	26.4%	211	20	78	290.0%
16	1,066	1,150	7.9%	88	1,042	1,530	46.8%	212	9	35	288.9%
17	1,803	1,894	5.0%	93	1,492	1,700	13.9%	217	22	47	113.6%
19	1,015	567	-44.1%	95	132	239	81.1%	238	227	227	0.0%
21	379	805	112.4%	99	860	934	8.6%	241		56	
22	1,983	1,876	-5.4%	101	98	121	23.5%	246	64	59	-7.8%
24	987	1,057	7.1%	102	689	895	29.9%	248	63	59	-6.3%
27	4,193	3,267	-22.1%	103	365	184	-49.6%	252	284	410	44.4%
29	321	246	-23.4%	104	229	345	50.7%	254	5	11	120.0%
31	401	453	13.0%	105	645	878	36.1%	267	61	74	21.3%
32	1,275	1,122	-12.0%	107	887	871	-1.8%	272	186	196	5.4%
33	842	818	-2.9%	108	353	346	-2.0%	277	377	262	-30.5%
34	676	520	-23.1%	110	1,927	1,693	-12.1%	286	31	41	32.3%
35	1,312	1,027	-21.7%	112	5,478	5,364	-2.1%	287	107	105	-1.9%
36	1,367	1,477	8.0%	113	375	395	5.3%	288		226	
37	2,318	2,104	-9.2%	115	163	149	-8.6%	295			
38	3,702	3,127	-15.5%	119	7,137	7,004	-1.9%	296			
39	102	77	-24.5%	120	4,111	4,657	13.3%	297	635	455	-28.3%
40	906	978	7.9%	132	39	5		301	848	637	-24.9%
42	582	599	2.9%	135	714	621	-13.0%	302	74	57	-23.0%
46	9	13	44.4%	136	30	111	270.0%	344	53	37	-30.2%
51	1,796	1,967	9.5%	137	754	849	12.6%	500	43	9	-79.1%
52	766	497	-35.1%	150	1,056	1,143	8.2%	836		44	
54	1,688	1,375	-18.5%	155	32	24	-25.0%				
56	132	146	10.6%	175							
57	206	211	2.4%	183	2,134	1,676	-21.5%	Total (1)	96,934	94,641	-2.4%

(1) Excludes Lifeline shuttles and some routes not run both years.

YEAR-OVER-YEAR BUS RIDERSHIP BY ROUTE SERVICE TYPE

Boardings by Service Type and Route	Average Weekday	Average Weekday	Percent Change	Average Saturday	Average Saturday	Percent Change	Average Sunday	Average Sunday	Percent Change	Total Monthly	Total Monthly	Percent Change
	Jan-22	Jan-21	21 vs 20	Jan-22	Jan-21	21 vs 20	Jan-22	Jan-21	21 vs 20	Jan-22	Jan-21	21 vs 20
Directly Operated Express Routes (1)												
34 EXPRESS	876	807	8.6%							18,394	16,137	14.0%
39 EXPRESS	215	204	5.4%							2,793	4,077	-31.5%
95-EXPRESS	573	376	52.2%							12,026	7,527	59.8%
150-MIAMI BEACH AIRPORT FLYER	1,243	1,089	14.1%	1,216	1,067	13.9%	1,134	1,127	0.7%	37,846	33,878	11.7%
175 - NW MIAMI-DADE EXPRESS												
195 EXPRESS - BROWARD BLVD												
196 EXPRESS - SHERIDAN ST												
295 EXPRESS - BROWARD BLVD - CIVIC CENTER												
296 EXPRESS - SHERIDAN ST - CIVIC CENTER												
204 KAT-KILLIAN	352									7,384		
288 KENDALL CRUISER	327									6,870		
338 - WEEKEND EXPRESS				124	148	-16.7%	148	112	32.5%	1,359	1,116	21.8%
836 EXPRESS	109									2,298		
Subtotal Directly Operated Express Routes	3,694	2,476	49.2%	1,339	1,215	10.2%	1,282	1,239	3.5%	88,970	62,735	41.8%
Percentage of All Bus Routes	3.2%	2.1%		2.0%	1.5%		2.5%	2.1%		2.9%	2.0%	
Contracted Routes												
1	183	174	5.4%	98	213	-54.1%	81	154	-47.5%	4,738	5,464	-13.3%
29	399	352	13.4%							8,384	7,044	19.0%
46 - LIBERTY CITY CONN.	18	24	-23.0%							388	480	-19.2%
56	225	168	34.1%							4,735	3,363	40.8%
71	444	362	22.6%	135	195	-30.9%	88	162	-45.7%	10,437	9,190	13.6%
72	487	378	28.7%	245	265	-7.5%	219	206	6.0%	12,537	10,122	23.9%
82 - WESTCHESTER CIRC	24	26	-6.8%	30	44	-32.6%				655	738	-11.2%
101 - A	162	104	55.8%	52	52	-1.5%	43	34	27.7%	3,865	2,538	52.3%
115	143	194	-26.3%	92	171	-46.3%	95	169	-43.7%	3,944	5,758	-31.5%
155 - BISCAYNE GARDENS CIRC	27	34	-18.7%							577	676	-14.6%
202 - LITTLE HAITI CONN.	100	127	-21.4%	64	110	-42.1%	66	103	-35.2%	2,744	3,702	-25.9%
210 - SKYLAKE CIRC	289	304	-4.7%	154	165	-7.0%	115	122	-5.3%	7,422	7,633	-2.8%
211-OVERTOWN CIRC	80	52	54.2%							1,687	1,042	61.9%
212-SWEETWATER CIRC	30	10	212.2%							636	194	227.8%
217 - BUNCHE PARK CIRC	66	65	0.5%							1,381	1,309	5.5%
246 - NIGHT OWL	32	77	-58.0%	52	73	-28.8%	27	83	-67.2%	1,073	2,400	-55.3%
248 - PRINCETON CIRCULATOR	79	69	15.0%							1,660	1,375	20.7%
254-BROWNSVILLE CIRC	8	14	-43.9%							166	282	-41.1%
286-NORTH POINTE CIRC	17	33	-48.2%	34	32	6.3%				526	814	-35.4%
344	52	74	-29.7%							1,088	1,474	-26.2%
Subtotal Contracted Reg. & Circ. Routes	2,867	2,640	8.6%	955	1,321	-27.8%	734	1,031	-28.8%	68,643	65,598	4.6%
Percentage of All Bus Routes	2.5%	2.3%		1.4%	1.7%		1.5%	1.8%		2.3%	2.1%	

(1) Several express routes were suspended beginning at the end of March 2020, due to the SARS-CoV-2 pandemic, while other routes had alignment and schedule modifications made to them, in an ongoing effort to optimize service delivery.

YEAR-OVER-YEAR BUS RIDERSHIP BY ROUTE SERVICE TYPE

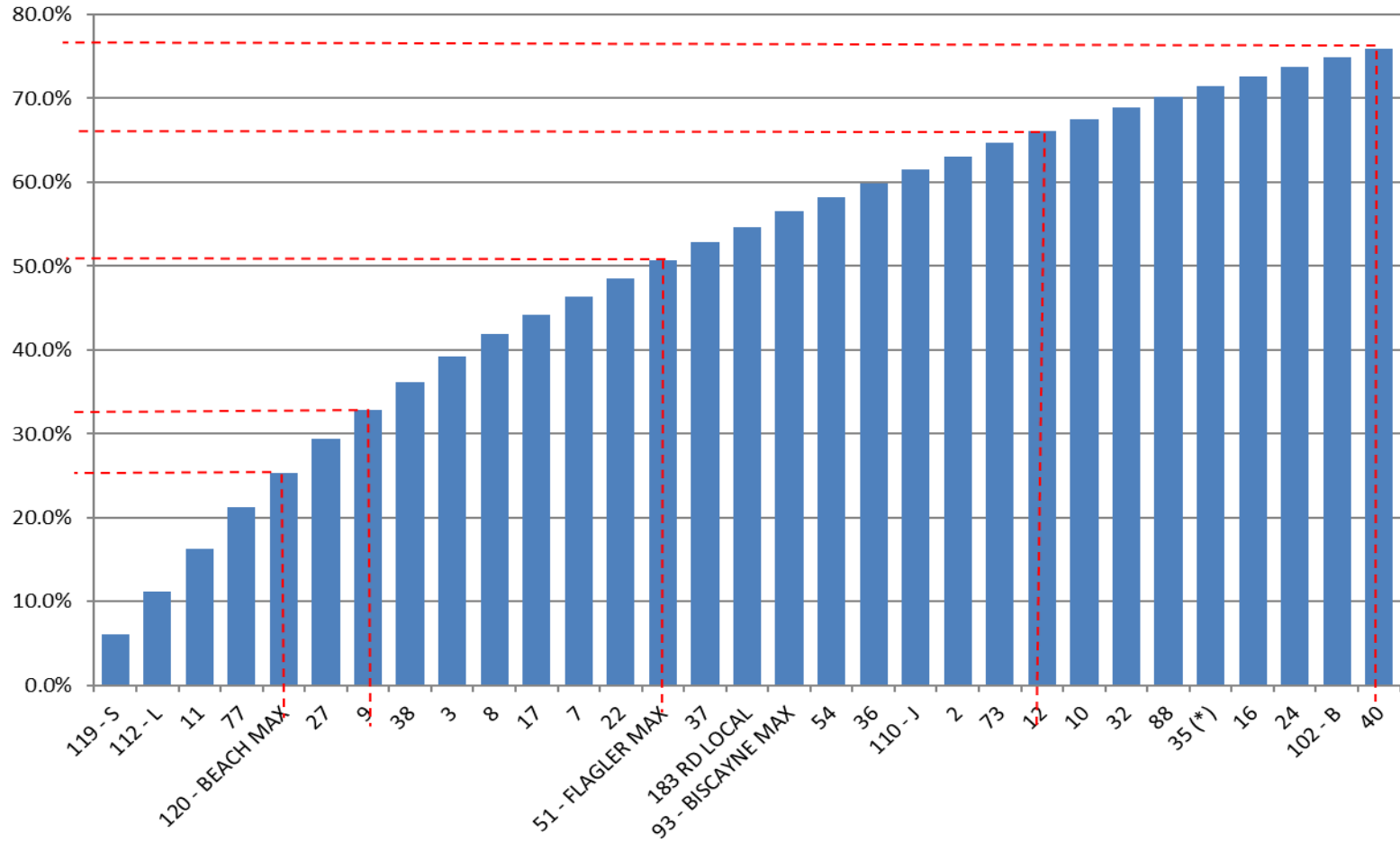
Boardings by Service Type and Route	Average Weekday	Average Weekday	Percent Change	Average Saturday	Average Saturday	Percent Change	Average Sunday	Average Sunday	Percent Change	Total Monthly	Total Monthly	Percent Change
	Jan-22	Jan-21	21 vs 20	Jan-22	Jan-21	21 vs 20	Jan-22	Jan-21	21 vs 20	Jan-22	Jan-21	21 vs 20
Contracted Express Routes												
272 SUNSET-KAT	264	239	10.3%							5,538	4,780	15.9%
301-DADE MONROE EXPRESS	756	848	-10.9%	744	897	-17.1%	694	846	-17.9%	23,060	26,527	-13.1%
302-CARD SOUND EXPRESS	66	77	-15.2%	31	72	-57.6%	48	45	5.4%	1,769	2,180	-18.9%
Subtotal Contracted Express Routes	1,085	1,165	-6.8%	775	970	-20.1%	742	891	-16.7%	30,367	33,487	-9.3%
Percentage of All Bus Routes	0.9%	1.0%		1.2%	1.2%		1.5%	1.5%		1.0%	1.1%	
Limited Stop Routes												
24-CORAL WAY LIMITED	1,343	1,289	4.2%	846	1,145	-26.1%	693	1,082	-36.0%	35,897	37,993	-5.5%
51-FLAGLER MAX	2,520	2,222	13.4%							52,926	44,439	19.1%
79 STREET MAX	265									5,572		
93 - BISCAYNE MAX	2,169	1,561	38.9%							45,541	31,222	45.9%
120 - BEACH MAX	4,845	4,529	7.0%	3,532	3,389	4.2%	2,259	2,265	-0.3%	130,698	121,111	7.9%
241 TUTTLE LIMITED	60			31			32			1,574		
252-CORAL REEF MAX	547	449	21.7%	212	241	-12.2%	170	178	-4.2%	13,387	11,254	19.0%
267-LUDLAM LIMITED (contracted)	106	88	19.4%							2,217	1,768	25.4%
277-7TH AVENUE MAX	436	484	-9.8%							9,161	9,670	-5.3%
287-SAGA BAY MAX	172	156	10.4%							3,616	3,119	15.9%
297-27th AVENUE ORANGE MAX	779	788	-1.2%				112			16,461	15,759	4.5%
Subtotal Limited Stop Routes	13,241	11,565	14.5%	4,620	4,775	-3.2%	3,266	3,525	-7.3%	317,050	276,335	14.7%
Percentage of All Bus Routes	11.3%	9.9%		7.0%	6.1%		6.5%	6.1%		10.5%	9.0%	
Directly Operated Free Routes												
132 -TRI-RAIL DORAL	4	30	-85.4%							69	562	-87.7%
200-CUTLER BAY LOCAL	73	121	-39.8%	38	107	-64.4%	2	53	-97.1%	1,505	3,268	-53.9%
Subtotal Free Directly Operated Routes	77	151	-48.7%	38	107	-64.4%	2	53	-97.1%	1,574	3,830	-58.9%
Percentage of All Bus Routes	0.1%	0.1%		0.1%	0.1%		0.0%	0.1%		0.1%	0.1%	
Shuttles												
55-MARLINS SHUTTLE												
Percentage of All Bus Routes												
Contractor-Operated Lifeline Routes												
GREEN HILLS SHUTTLE	8	5	52.4%							40	21	90.5%
KINGS CREEK SHUTTLE	17	6	175.0%							66	24	175.0%
SIERRA LAKES SHUTTLE	17	17	0.0%							66	66	0.0%
ROBERT SHARP SHUTTLE	21	20	3.8%							82	79	3.8%
AHEPA SHUTTLE	21	25	-14.3%							84	98	-14.3%
FEDERATION GARDENS SHUTTLE				20	16	23.2%				101	82	23.2%
Subtotal Contractor-Operated Lifeline Routes	83	72	14.6%	20	16	23.2%				439	370	18.6%
Percentage of All Bus Routes	0.1%	0.1%		0.0%	0.0%					0.0%	0.0%	
All Other (Regular) Routes	95,794	99,054	-3.3%	58,262	70,475	-17.3%	44,295	51,155	-13.4%	2,522,012	2,640,391	-4.5%
Percentage of All Bus Routes	82.0%	84.6%		88.3%	89.3%		88.0%	88.4%		83.3%	85.7%	
Total Bus System	116,841	117,123	-0.2%	66,009	78,880	-16.3%	50,322	57,894	-13.1%	3,029,055	3,082,746	-1.7%

Bus Routes as Ranked by Percentage of Average Weekday Ridership

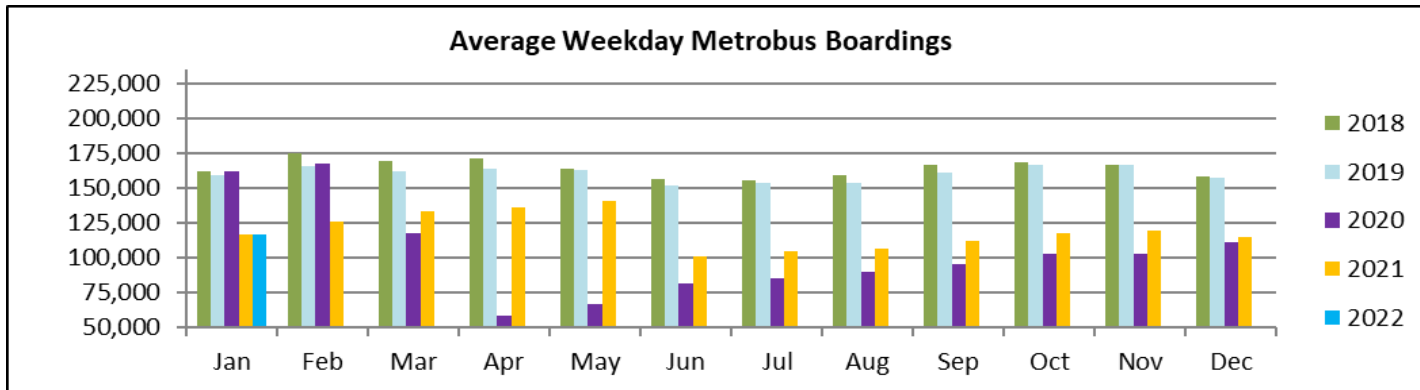
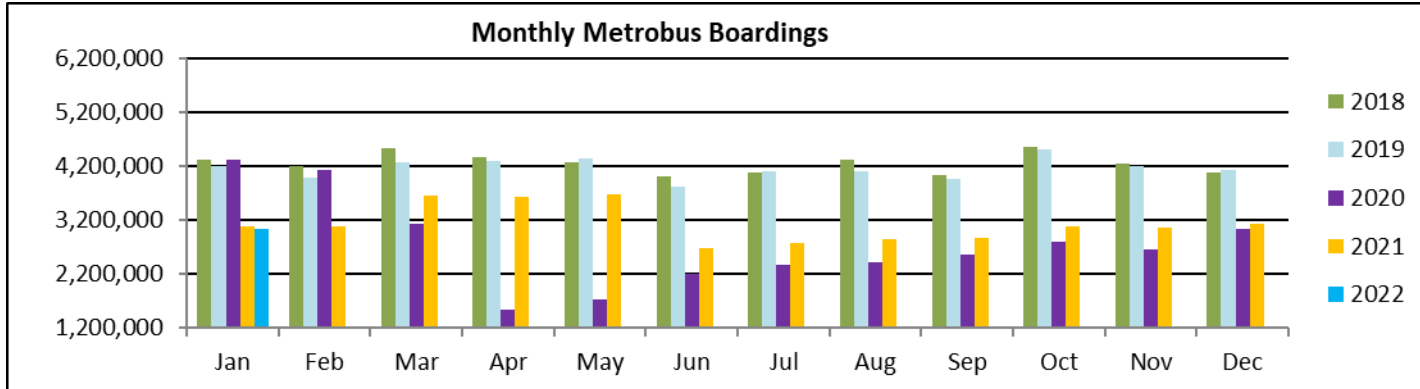
Rank	Route	Average Weekday	Percent Share	Cumul Pct Share	Rank	Route	Average Weekday	Percent Share	Cumul Pct Share	Rank	Route	Average Weekday	Percent Share	Cumul Pct Share	
1	119	7,125	6.1%	6.1%	36	87	1,169	1.0%	81.1%	71	1	183	0.2%	98.6%	
2	112	5,956	5.1%	11.2%	37	99	1,139	1.0%	82.0%	72	287	172	0.1%	98.7%	
3	11	5,908	5.1%	16.3%	38	137	1,116	1.0%	83.0%	73	101	162	0.1%	98.9%	
4	77	5,807	5.0%	21.2%	39	33	1,097	0.9%	83.9%	74	115	143	0.1%	99.0%	
5	120	4,845	4.1%	25.4%	40	207	1,002	0.9%	84.8%	75	136	127	0.1%	99.1%	
6	27	4,647	4.0%	29.3%	41	105	923	0.8%	85.6%	76	836	109	0.1%	99.2%	
7	9	4,055	3.5%	32.8%	42	135	909	0.8%	86.3%	77	267	106	0.1%	99.3%	
8	38	3,840	3.3%	36.1%	43	208	907	0.8%	87.1%	78	202	100	0.1%	99.4%	
9	3	3,618	3.1%	39.2%	44	34	876	0.7%	87.9%	79	211	80	0.1%	99.4%	
10	8	3,187	2.7%	41.9%	45	52	838	0.7%	88.6%	80	248	79	0.1%	99.5%	
11	17	2,668	2.3%	44.2%	46	75	829	0.7%	89.3%	81	200	73	0.1%	99.6%	
12	7	2,534	2.2%	46.4%	47	19	820	0.7%	90.0%	82	217	66	0.1%	99.6%	
13	22	2,531	2.2%	48.5%	48	297	779	0.7%	90.7%	83	302	66	0.1%	99.7%	
14	51	2,520	2.2%	50.7%	49	301	756	0.6%	91.3%	84	241	60	0.1%	99.7%	
15	37	2,439	2.1%	52.8%	50	31	643	0.6%	91.9%	85	344	52	0.0%	99.8%	
16	183	2,191	1.9%	54.7%	51	42	638	0.5%	92.4%	86	246	32	0.0%	99.8%	
17	93	2,169	1.9%	56.5%	52	95	573	0.5%	92.9%	87	212	30	0.0%	99.8%	
18	54	1,993	1.7%	58.2%	53	252	547	0.5%	93.4%	88	155	27	0.0%	99.9%	
19	36	1,953	1.7%	59.9%	54	104	524	0.4%	93.8%	89	82	24	0.0%	99.9%	
20	110	1,878	1.6%	61.5%	55	72	487	0.4%	94.2%	90	AS	21	0.0%	99.9%	
21	2	1,867	1.6%	63.1%	56	113	472	0.4%	94.6%	91	RS	21	0.0%	99.9%	
22	73	1,823	1.6%	64.7%	57	71	444	0.4%	95.0%	92	46	18	0.0%	99.9%	
23	12	1,731	1.5%	66.1%	58	277	436	0.4%	95.4%	93	286	17	0.0%	99.9%	
24	10	1,637	1.4%	67.5%	59	29	399	0.3%	95.7%	94	KC	17	0.0%	100.0%	
25	32	1,619	1.4%	68.9%	60	108	360	0.3%	96.0%	95	SL	17	0.0%	100.0%	
26	88	1,512	1.3%	70.2%	61	204	352	0.3%	96.3%	96	500	11	0.0%	100.0%	
27	35	1,420	1.2%	71.4%	62	238	350	0.3%	96.6%	97	GH	8	0.0%	100.0%	
28	16	1,383	1.2%	72.6%	63	288	327	0.3%	96.9%	98	254	8	0.0%	100.0%	
29	24	1,343	1.1%	73.8%	64	210	289	0.2%	97.2%	99	132	4	0.0%	100.0%	
30	102	1,293	1.1%	74.9%	65	79	265	0.2%	97.4%						
31	40	1,264	1.1%	76.0%	66	272	264	0.2%	97.6%						
32	150	1,243	1.1%	77.0%	67	57	257	0.2%	97.8%						
33	107	1,184	1.0%	78.0%	68	103	248	0.2%	98.1%						
34	21	1,176	1.0%	79.0%	69	56	225	0.2%	98.2%						
35	62	1,175	1.0%	80.1%	70	39	215	0.2%	98.4%						
												entirely contracted			
												Total Boardings	116,841	100.0%	100.0%

- (1) Average weekday ridership rounded to the nearest unit.
(2) Includes the five Lifeline Shuttles that operate on weekdays: Ahepa, Green Hills, Kings Creek, Robert Sharp and Sierra Lakes.

**Bus - Cumulative Percentage Average Weekday Ridership Share
Top 1/4, 1/3, 1/2, 2/3 and 3/4 of Routes**



TOTAL MONTHLY AND AVERAGE WEEKDAY RIDERSHIP YEAR OVER YEAR COMPARISON CHARTS – METROBUS

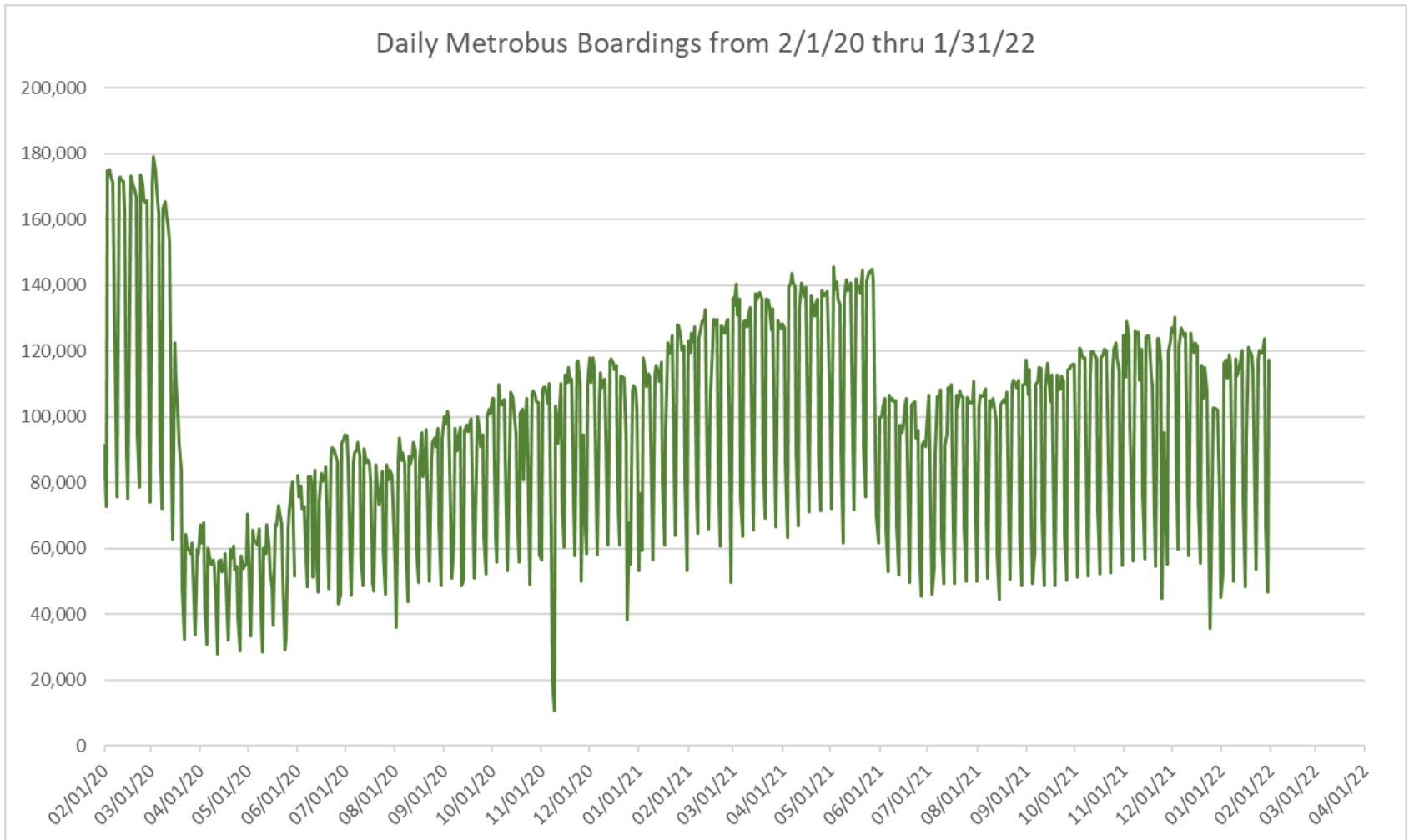


**“TOP 5 / BOTTOM 5” BUS ROUTES AVERAGE WEEKDAY RIDERSHIP PERFORMANCE
YEAR OVER YEAR COMPARISONS**

Route	Jan-22	Jan-21	Absolute Delta (1)	Percent Delta (2)
102 - B	1,293	644	649	100.9%
93 - BISCAYNE MAX	2,169	1,561	608	38.9%
73	1,823	1,427	396	27.7%
7	2,534	2,156	378	17.5%
11	5,908	5,531	377	6.8%
112 - L	5,956	7,041	-1,085	-15.4%
9	4,055	5,112	-1,056	-20.7%
119 - S	7,125	7,825	-701	-9.0%
27	4,647	5,346	-699	-13.1%
3	3,618	4,058	-440	-10.8%

- (1) Averages rounded to the nearest boarding, data as reported by NFS and/or APC system, depending on year; Lifelines excluded.
- (2) As a result of the SARS-CoV-2 pandemic, rides were fare-free beginning March 22, 2020; many bus routes continued reporting YOY gains in January 2022, since January 2021 showed clear reduction effects on ridership from the SARS-CoV-2 pandemic. Fares were reinstated June 1, 2021, and ridership data from the farebox system rather than the automatic passenger counter system is utilized from that date going forward.

DAILY METROBUS RIDERSHIP SINCE FEBRUARY 1, 2020



- (1) National Emergency was declared on 3/13/20 as a result of the SARS-CoV-2 pandemic.
- (2) There was no Metrobus, Metrorail and Metromover service on 5/31/20, as a safety precaution.
- (3) The dip at the start of the second week of November 2020 is due to Hurricane Eta.
- (4) The reduction seen beginning 6/1/21 is partly due to the resumption of fares and partly the result of resuming reporting Cubic farebox data rather than bus APC counts.
- (5) Periodic (weekly) variations are prominent, since weekday ridership is almost always significantly higher than weekend or holiday ridership.

METROBUS PARKING PATRONAGE SUMMARY

January 2022

PARK-RIDE LOT	ACTUAL AVAILABLE SPACES	ACTUAL OCCUPANCY	PERCENT OCCUPANCY
Transitway / SW 152nd St	200	104	52%
Transitway / SW 168th St	149	0	0%
Transitway / SW 200th Street (effective February 2020)	100	27	27%
Transitway / SW 112 Ave (Target)	450	101	22%
Transitway / SW 244th St	95	42	44%
Transitway / SW 296th St	139	37	27%
Transitway / SW 344th St	248	119	48%
Coral Reef Drive 117/ Tumpike	95	60	63%
Golden Glades - East Lot	535	219	41%
Golden Glades - West Lot	1,007	0	0%
Hammocks Town Center (SW 152 Ave / SW 104 St)	50	6	12%
Kendall Dr./SW 127th Ave	161	17	11%
West Kendall Transit Term (Kendall Dr / SW162 Ave)	40	8	20%
NW 7th Avenue Transit Village (NW 7 Ave / NW 62 St)	25	23	92%
Miami Gardens Dr. / NW 73rd Ave	136	0	0%
Dolphin Station (effective Mar 2020)	348	45	13%
I-75 / Miami Gardens Dr (effective June 2019)	298	0	0%
TOTAL	4,076	808	20%

Note: some park-ride lots are joint-use and the number of park-ride vehicles may exceed the number of spaces allocated.

Metrorail



METRORAIL AVERAGE WEEKDAY BOARDINGS BY STATION (†)

Weekdays	Average Weekday	Average Weekday	Percent Change	Average Weekday	Percent Change	Average Weekday	Percent Change	Average Weekday	Percent Change
STATIONS	Jan-22	Jan-21	YOY	Feb-20	Current vs Feb-20	Dec-21	MOM	Jan-20	YO2Y
ALLAPATTAH	1,172	1,261	-7.0%	1,942	-39.6%	1,142	2.6%	1,905	-38.5%
BRICKELL	3,433	3,699	-7.2%	6,529	-47.4%	3,386	1.4%	6,245	-45.0%
BROWNSVILLE	555	710	-21.8%	862	-35.6%	569	-2.4%	851	-34.8%
CIVIC CENTER	2,840	2,713	4.7%	6,143	-53.8%	2,759	2.9%	5,945	-52.2%
COCONUT GROVE	1,087	989	9.9%	1,795	-39.4%	1,075	1.1%	1,689	-35.6%
CULMER	816	870	-6.2%	1,392	-41.4%	776	5.2%	1,340	-39.1%
DADELAND NORTH	2,709	3,142	-13.8%	5,926	-54.3%	2,807	-3.5%	5,748	-52.9%
DADELAND SOUTH	3,149	3,089	1.9%	7,150	-56.0%	3,208	-1.8%	6,873	-54.2%
DOUGLAS ROAD	2,135	1,511	41.3%	3,624	-41.1%	2,132	0.1%	3,483	-38.7%
DR. MARTIN LUTHER KING, JR.	693	804	-13.8%	1,157	-40.1%	703	-1.4%	1,148	-39.7%
EARLINGTON HEIGHTS	965	1,000	-3.5%	1,662	-41.9%	961	0.4%	1,586	-39.2%
GOVERNMENT CENTER	4,678	3,435	36.2%	10,557	-55.7%	4,723	-1.0%	9,560	-51.1%
HIALEAH	824	710	16.1%	1,253	-34.2%	809	1.8%	1,230	-33.0%
MIAMI INTERNATIONAL AIRPORT	901	686	31.3%	1,711	-47.3%	947	-4.8%	1,678	-46.3%
NORTHSIDE	959	1,064	-9.9%	1,476	-35.0%	957	0.3%	1,401	-31.6%
OKEECHOBEE	611	656	-6.8%	1,164	-47.5%	613	-0.2%	1,133	-46.1%
OVERTOWN / ARENA	962	702	36.9%	2,274	-57.7%	981	-2.0%	2,205	-56.4%
PALMETTO	839	773	8.5%	1,543	-45.6%	804	4.4%	1,494	-43.9%
SANTA CLARA	474	495	-4.4%	812	-41.7%	466	1.5%	780	-39.3%
SOUTH MIAMI	1,456	1,298	12.2%	3,015	-51.7%	1,480	-1.6%	2,896	-49.7%
TRI-RAIL	736	768	-4.2%	1,207	-39.0%	739	-0.3%	1,184	-37.8%
UNIVERSITY	862	612	40.8%	2,784	-69.0%	944	-8.7%	2,370	-63.6%
VIZCAYA	823	726	13.4%	1,390	-40.8%	842	-2.2%	1,336	-38.4%
TOTAL	33,678	31,713	6.2%	67,367	-50.0%	33,822	-0.4%	64,081	-47.4%

(†) In this table and those which follow, "YOY" stands for "year-over-year", "MOM" for "month-over-month" and "YO2Y" for "year over two years", i.e., current month vs 12 months prior, one month prior and 24 months prior, respectively.

(*) Due to effects from the SARS-CoV-2 pandemic; rides were fare-free beginning March 22, 2020; fares were reinstated on June 1, 2021, in part accounting for the drop in ridership from May 2021.

METRORAIL AVERAGE SATURDAY BOARDINGS BY STATION

Saturdays	Average Saturday	Average Saturday	Percent Change	Average Saturday	Percent Change	Average Saturday	Percent Change	Average Saturday	Percent Change
STATIONS	Jan-22	Jan-21	YOY	Feb-20	Current vs Feb-20	Dec-21	MOM	Jan-20	YO2Y
ALLAPATTAH	660	799	-17.5%	1,051	-37.3%	631	4.5%	1,034	-36.2%
BRICKELL	1,779	2,284	-22.1%	2,811	-36.7%	1,780	-0.1%	2,677	-33.5%
BROWNSVILLE	350	499	-29.9%	520	-32.7%	330	6.2%	532	-34.2%
CIVIC CENTER	512	641	-20.1%	959	-46.7%	521	-1.7%	918	-44.3%
COCONUT GROVE	582	611	-4.7%	928	-37.3%	567	2.6%	843	-31.0%
CULMER	373	548	-31.8%	721	-48.2%	372	0.3%	727	-48.7%
DADELAND NORTH	1,015	1,587	-36.1%	1,994	-49.1%	1,131	-10.3%	1,883	-46.1%
DADELAND SOUTH	1,358	1,928	-29.5%	2,625	-48.3%	1,414	-3.9%	2,570	-47.2%
DOUGLAS ROAD	891	799	11.5%	1,319	-32.4%	894	-0.3%	1,331	-33.0%
DR. MARTIN LUTHER KING, JR.	388	519	-25.2%	625	-37.9%	373	4.0%	627	-38.1%
EARLINGTON HEIGHTS	553	665	-16.8%	935	-40.8%	562	-1.4%	902	-38.6%
GOVERNMENT CENTER	2,122	2,084	1.8%	4,262	-50.2%	2,177	-2.5%	3,571	-40.6%
HIALEAH	370	397	-6.7%	583	-36.5%	411	-9.9%	614	-39.7%
MIAMI INTERNATIONAL AIRPORT	720	636	13.2%	1,330	-45.9%	769	-6.3%	1,316	-45.3%
NORTHSIDE	582	840	-30.7%	878	-33.7%	587	-0.7%	900	-35.3%
OKEECHOBEE	242	328	-26.3%	408	-40.7%	269	-10.0%	382	-36.6%
OVERTOWN / ARENA	407	422	-3.6%	678	-40.0%	392	3.8%	572	-28.8%
PALMETTO	264	302	-12.6%	458	-42.4%	250	5.6%	422	-37.4%
SANTA CLARA	236	305	-22.8%	422	-44.1%	236	-0.1%	382	-38.4%
SOUTH MIAMI	691	642	7.6%	1,256	-45.0%	710	-2.7%	1,155	-40.2%
TRI-RAIL	312	438	-28.8%	614	-49.3%	311	0.1%	554	-43.8%
UNIVERSITY	377	334	13.1%	714	-47.1%	358	5.6%	660	-42.8%
VIZCAYA	372	459	-19.1%	622	-40.2%	396	-6.0%	581	-36.0%
TOTAL	15,155	18,066	-16.1%	26,714	-43.3%	15,438	-1.8%	25,150	-39.7%

METRORAIL AVERAGE SUNDAY BOARDINGS BY STATION

Sundays	Average Sunday	Average Sunday	Percent Change	Average Sunday	Percent Change	Average Sunday	Percent Change	Average Sunday	Percent Change
STATIONS	Jan-22	Jan-21	YOY	Feb-20	Current vs Feb-20	Dec-21	MOM	Jan-20	YO2Y
ALLAPATTAH	488	612	-20.3%	791	-38.3%	517	-5.7%	738	-33.9%
BRICKELL	1,485	1,831	-18.9%	2,379	-37.6%	1,632	-9.0%	2,076	-28.4%
BROWNSVILLE	238	394	-39.6%	406	-41.3%	262	-8.9%	392	-39.3%
CIVIC CENTER	396	618	-36.0%	791	-50.0%	433	-8.6%	690	-42.6%
COCONUT GROVE	450	472	-4.7%	838	-46.3%	514	-12.4%	672	-33.0%
CULMER	321	439	-26.8%	616	-47.9%	337	-4.8%	585	-45.1%
DADELAND NORTH	820	1,193	-31.2%	1,685	-51.3%	981	-16.4%	1,453	-43.5%
DADELAND SOUTH	1,108	1,517	-26.9%	2,210	-49.9%	1,221	-9.2%	1,996	-44.5%
DOUGLAS ROAD	660	515	28.3%	1,090	-39.4%	732	-9.8%	952	-30.6%
DR. MARTIN LUTHER KING, JR.	285	313	-8.8%	506	-43.7%	311	-8.4%	441	-35.4%
EARLINGTON HEIGHTS	419	522	-19.7%	799	-47.6%	458	-8.5%	730	-42.6%
GOVERNMENT CENTER	1,719	1,568	9.6%	4,044	-57.5%	1,884	-8.8%	2,816	-39.0%
HIALEAH	292	307	-5.1%	472	-38.1%	304	-4.0%	466	-37.3%
MIAMI INTERNATIONAL AIRPORT	750	603	24.4%	1,343	-44.1%	820	-8.5%	1,302	-42.4%
NORTHSIDE	424	620	-31.6%	653	-35.0%	478	-11.3%	655	-35.2%
OKEECHOBEE	142	223	-36.3%	273	-48.1%	178	-20.1%	261	-45.6%
OVERTOWN / ARENA	338	377	-10.2%	544	-37.9%	372	-9.0%	486	-30.4%
PALMETTO	183	198	-8.0%	336	-45.7%	181	0.7%	266	-31.2%
SANTA CLARA	155	209	-26.1%	280	-44.6%	176	-12.2%	241	-35.8%
SOUTH MIAMI	547	448	22.1%	987	-44.5%	591	-7.4%	824	-33.5%
TRI-RAIL	299	361	-17.0%	528	-43.3%	329	-9.1%	527	-43.2%
UNIVERSITY	261	257	1.6%	608	-57.1%	262	-0.2%	468	-44.2%
VIZCAYA	292	336	-13.1%	524	-44.3%	331	-11.8%	441	-33.8%
TOTAL	12,072	13,933	-13.4%	22,701	-46.8%	13,301	-9.2%	19,474	-38.0%

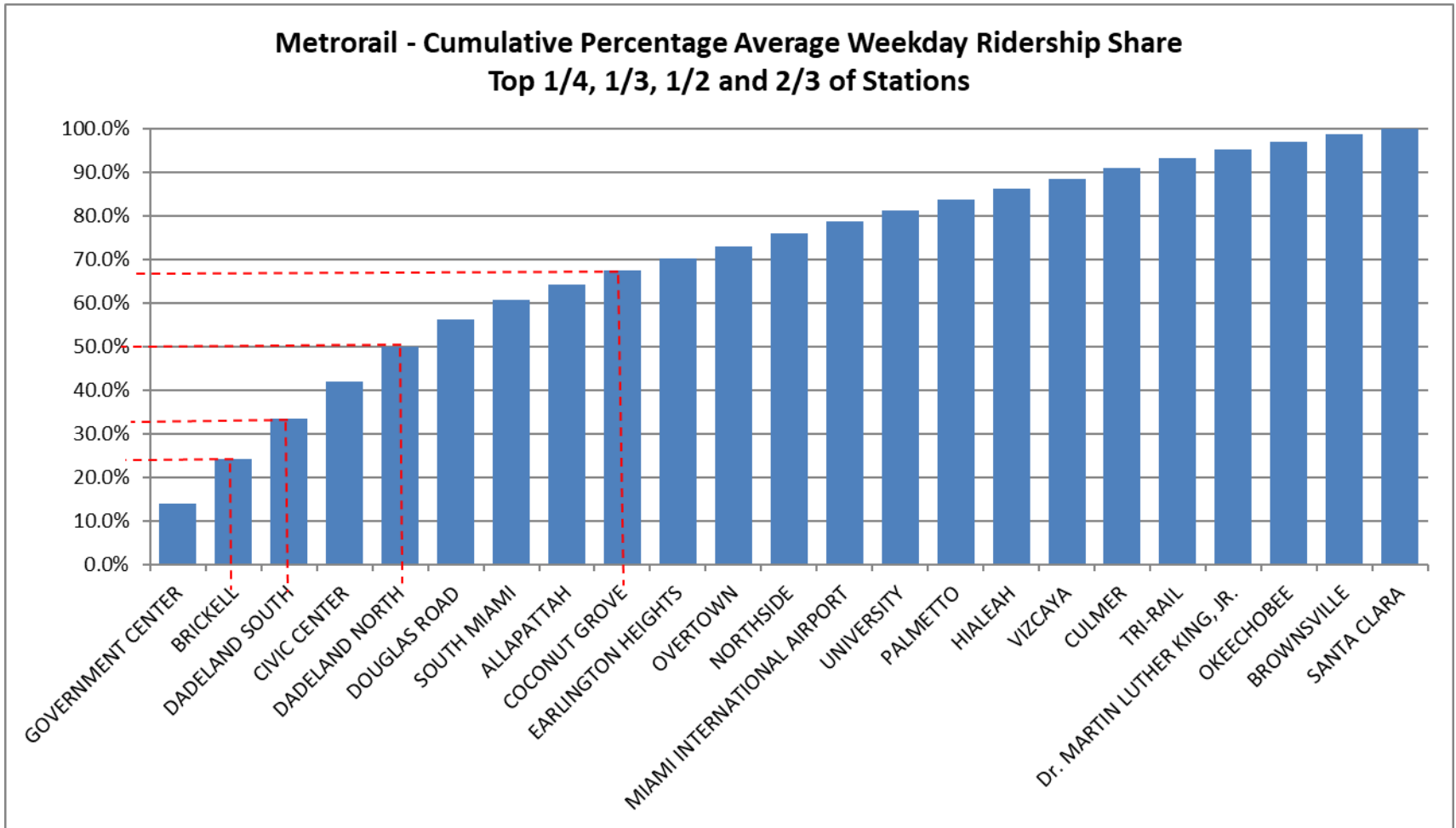
METRORAIL TOTAL MONTHLY BOARDINGS BY STATION

Monthly Totals	Total Month	Total Month	Percent Change	Total Month	Percent Change	Total Month	Percent Change	Total Month	Percent Change
STATIONS	Jan-22	Jan-21	YOY	Feb-20	Current vs Feb-20	Dec-21	MOM	Jan-20	YO2Y
ALLAPATTAH	30,134	32,643	-7.7%	46,868	-35.7%	30,100	0.1%	49,119	-38.7%
BRICKELL	87,697	95,706	-8.4%	152,259	-42.4%	88,801	-1.2%	155,872	-43.7%
BROWNSVILLE	14,643	18,992	-22.9%	21,285	-31.2%	15,100	-3.0%	22,905	-36.1%
CIVIC CENTER	62,272	59,442	4.8%	128,921	-51.7%	63,100	-1.3%	133,416	-53.3%
COCONUT GROVE	27,806	25,392	9.5%	43,580	-36.2%	28,268	-1.6%	43,211	-35.7%
CULMER	20,324	22,528	-9.8%	33,497	-39.3%	20,093	1.1%	34,802	-41.6%
DADELAND NORTH	64,955	76,348	-14.9%	132,894	-51.1%	69,887	-7.1%	137,680	-52.8%
DADELAND SOUTH	77,393	79,877	-3.1%	162,416	-52.3%	81,067	-4.5%	167,844	-53.9%
DOUGLAS ROAD	51,924	37,122	39.9%	82,141	-36.8%	53,340	-2.7%	85,185	-39.0%
DR. MARTIN LUTHER KING, JR.	17,801	19,527	-8.8%	27,980	-36.4%	18,364	-3.1%	29,720	-40.1%
EARLINGTON HEIGHTS	24,925	26,256	-5.1%	40,697	-38.8%	25,546	-2.4%	41,558	-40.0%
GOVERNMENT CENTER	115,783	87,794	31.9%	243,414	-52.4%	120,733	-4.1%	233,579	-50.4%
HIALEAH	20,409	17,850	14.3%	29,516	-30.9%	20,762	-1.7%	31,416	-35.0%
MIAMI INTERNATIONAL AIRPORT	26,307	20,672	27.3%	46,115	-43.0%	27,971	-5.9%	48,780	-46.1%
NORTHSIDE	24,975	29,033	-14.0%	36,127	-30.9%	25,735	-3.0%	37,168	-32.8%
OKEECHOBEE	14,544	15,930	-8.7%	26,026	-44.1%	15,223	-4.5%	27,238	-46.6%
OVERTOWN / ARENA	23,563	18,283	28.9%	49,911	-52.8%	24,503	-3.8%	51,765	-54.5%
PALMETTO	19,611	17,999	9.0%	33,944	-42.2%	19,125	2.5%	35,141	-44.2%
SANTA CLARA	11,799	12,591	-6.3%	19,245	-38.7%	11,979	-1.5%	19,692	-40.1%
SOUTH MIAMI	36,304	31,809	14.1%	69,412	-47.7%	37,715	-3.7%	71,052	-48.9%
TRI-RAIL	18,423	19,577	-5.9%	29,120	-36.7%	18,711	-1.5%	30,432	-39.5%
UNIVERSITY	20,999	15,153	38.6%	61,253	-65.7%	22,889	-8.3%	55,395	-62.1%
VIZCAYA	20,333	18,595	9.3%	32,497	-37.4%	21,424	-5.1%	33,370	-39.1%
TOTAL	832,924	799,119	4.2%	1,549,118	-46.2%	860,436	-3.2%	1,576,340	-47.2%

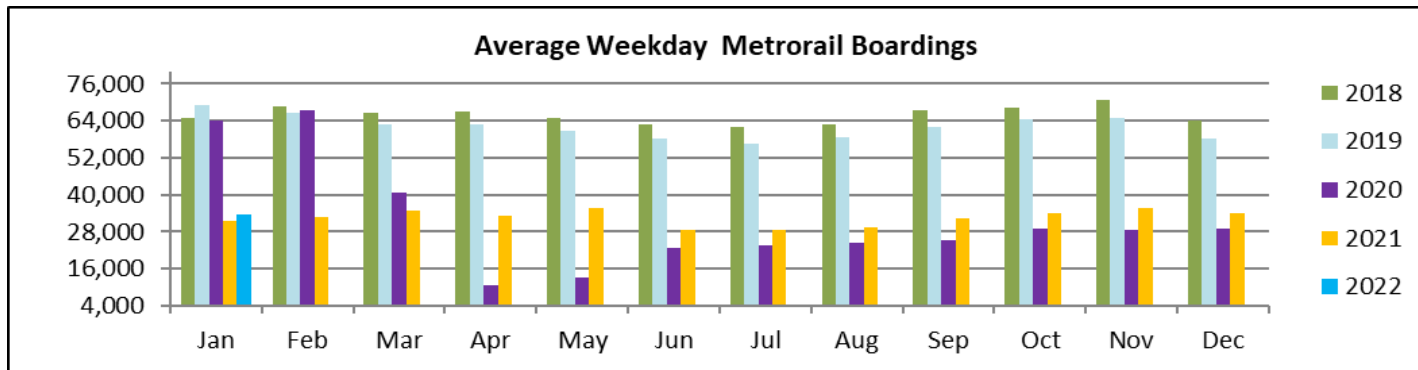
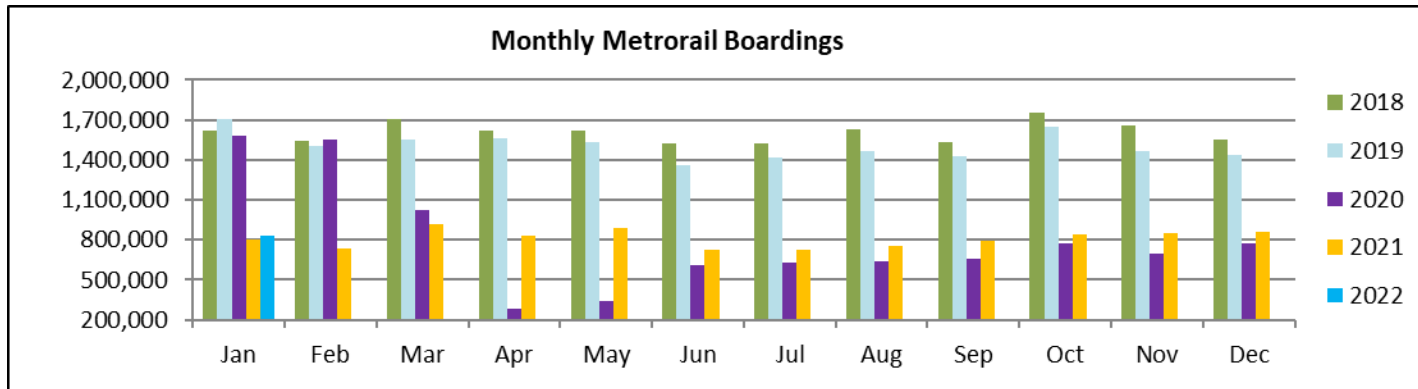
METRORAIL HOLIDAY BOARDINGS BY STATION

	Dr. MLK, Jr. Birthday	Dr. MLK, Jr. Birthday	Percent Change
STATIONS	2021	2022	22 vs 21
ALLAPATTAH	996	951	-4.5%
BRICKELL	3,104	2,722	-12.3%
BROWNSVILLE	585	599	2.4%
CIVIC CENTER	1,072	944	-11.9%
COCONUT GROVE	787	902	14.6%
CULMER	627	534	-14.8%
DADELAND NORTH	2,032	1,609	-20.8%
DADELAND SOUTH	2,556	2,090	-18.2%
DOUGLAS ROAD	1,049	1,467	39.8%
DR. MARTIN LUTHER KING, JR.	618	586	-5.2%
EARLINGTON HEIGHTS	798	768	-3.8%
GOVERNMENT CENTER	2,664	3,016	13.2%
HIALEAH	564	618	9.6%
MIAMI INTERNATIONAL AIRPORT	758	930	22.7%
NORTHSIDE	881	761	-13.6%
OKEECHOBEE	479	402	-16.1%
OVERTOWN / ARENA	570	603	5.8%
PALMETTO	623	598	-4.0%
SANTA CLARA	386	375	-2.8%
SOUTH MIAMI	1,050	987	-6.0%
TRI-RAIL	701	644	-8.1%
UNIVERSITY	378	564	49.2%
VIZCAYA	550	555	0.9%
TOTAL	23,828	23,225	-2.5%

METRORAIL CUMULATIVE PERCENTAGE RIDERSHIP SHARE



TOTAL MONTHLY AND AVERAGE WEEKDAY RIDERSHIP YEAR OVER YEAR COMPARISON CHARTS – METRORAIL



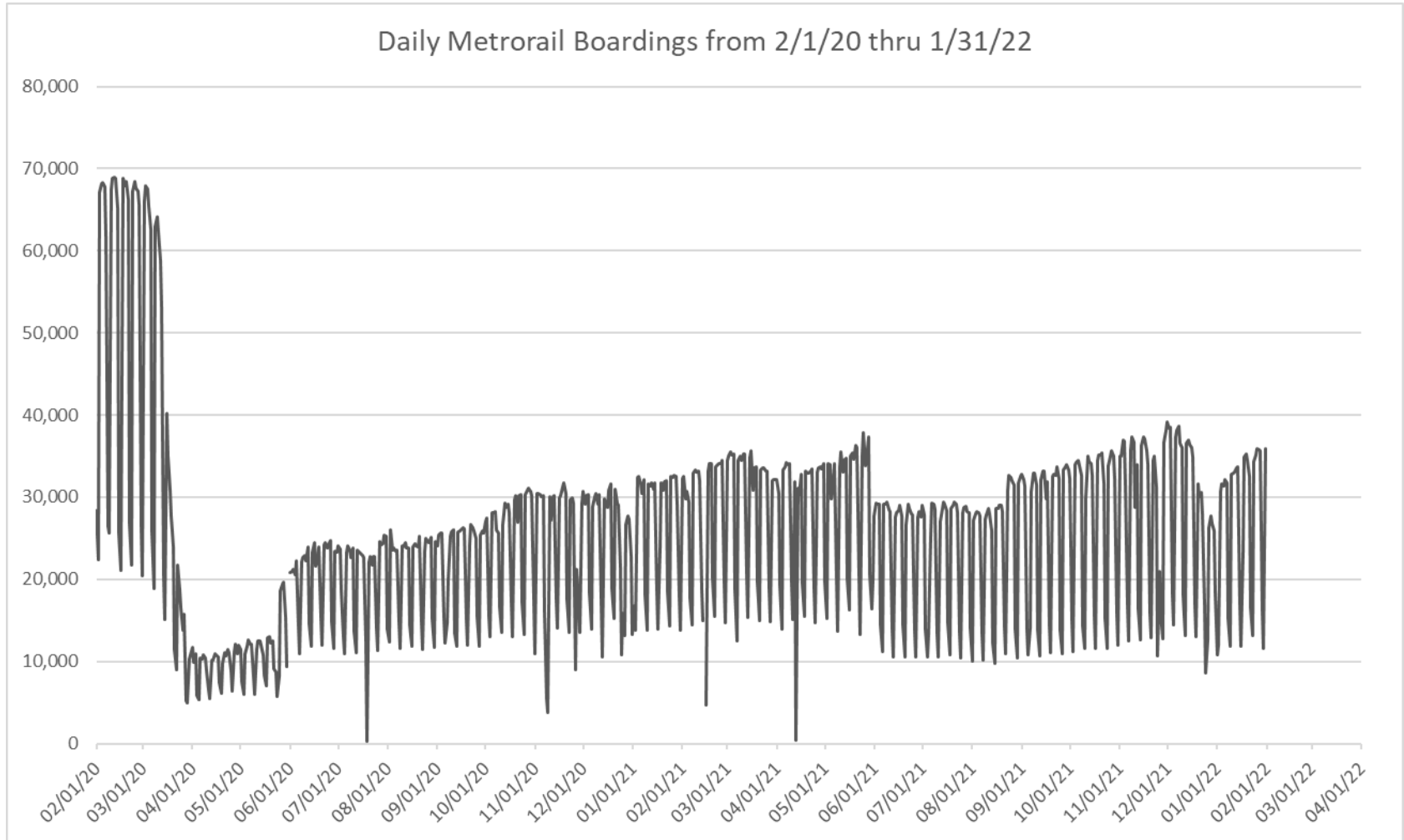
**“TOP 5 / BOTTOM 5” RAIL STATIONS AVERAGE WEEKDAY RIDERSHIP PERFORMANCE
YEAR OVER YEAR COMPARISONS**

Station	Jan-22	Jan-21	Absolute Delta (1)	Percent Delta
GOVERNMENT CENTER	4,678	3,435	1,243	36.2%
DOUGLASROAD	2,135	1,511	624	41.3%
OVERTOWN	962	702	259	36.9%
UNIVERSITY	862	612	250	40.8%
MIAMI INTERNATIONAL AIRPORT	901	686	215	31.3%
DADELAND NORTH	2,709	3,142	-433	-13.8%
BRICKELL	3,433	3,699	-266	-7.2%
BROWNSVILLE	555	710	-155	-21.8%
Dr. MARTIN LUTHER KING, JR.	693	804	-111	-13.8%
NORTHSIDE	959	1,064	-105	-9.9%

(1) Averages rounded to the nearest boarding.

(2) As a result of the SARS-CoV-2 pandemic, rides were fare-free beginning March 22, 2020; many rail stations continued reporting YOY gains in January 2022, since January 2021 showed clear reduction effects on ridership from the SARS-CoV-2 pandemic. Fares were reinstated June 1, 2021, and ridership data from the faregate system rather than the video camera counter system is utilized from that date going forward.

DAILY METRORAIL RIDERSHIP SINCE FEBRUARY 1, 2020



- (1) National Emergency was declared on 3/13/20 as a result of the SARS-CoV-2 pandemic.
- (2) There was no Metrobus, Metrorail and Metromover service on 5/31/20, as a safety precaution.
- (3) The dip at the start of the second week of November 2020 is due to Hurricane Eta; these are *raw data* from the Unleash Live contractor AI video system.
- (4) The dip on 4/13/21 is due to a loss of connectivity at all stations, affecting a few stations over the next two days as well.
- (5) The reduction seen beginning 6/1/21 is partly due to the resumption of fares and partly the result of resuming reporting Cubi faregate data rather than video camera counts.
- (6) Periodic (weekly) variations are prominent, since weekday ridership is almost always significantly higher than weekend or holiday ridership.

METRORAIL PARKING PATRONAGE SUMMARY January 2022

PARK-RIDE LOT	ACTUAL CAPACITY (1)	ACTUAL OCCUPANCY (2)	PERCENT OCCUPANCY
DADELAND SOUTH	1,260	698	55%
DADELAND NORTH	1,963	851	43%
SOUTH MIAMI	837	314	38%
UNIVERSITY	230	71	31%
DOUGLAS ROAD	220	212	96%
COCONUT GROVE	100	0	0%
VIZCAYA	120	38	32%
CULMER	40	8	20%
SANTA CLARA	61	38	62%
ALLAPATTAH	74	2	3%
EARLINGTON HEIGHTS	361	116	32%
BROWNSVILLE	100	54	54%
DR. MARTIN LUTHER KING JR. (MDT)	62	0	0%
DR. MARTIN LUTHER KING JR. (GARAGE)	631	0	0%
NORTHSIDE	100	58	58%
HIALEAH	338	28	8%
OKEECHOBEE	1,256	124	10%
PALMETTO	700	127	18%
TOTAL	8,453	2,738	32%

- (1) Number of spaces could vary each week; shown are available spaces during final week of month, as submitted by DTPW Safety & Security office.
(2) All sampled occupancy data provided by DTPW Safety & Security office; calculations are corrections to those submitted by that entity.
(3) Daily averages rounded to nearest unit, with fewer counts at some stations due to shortage of DTPW Safety & Security office staff; calculations are based on sampled counted days only per raw data submitted, with resulting average daily occupancy shown.
(*) Closed throughout the month, per the DTPW Safety & Security office.

Metromover



January 2022

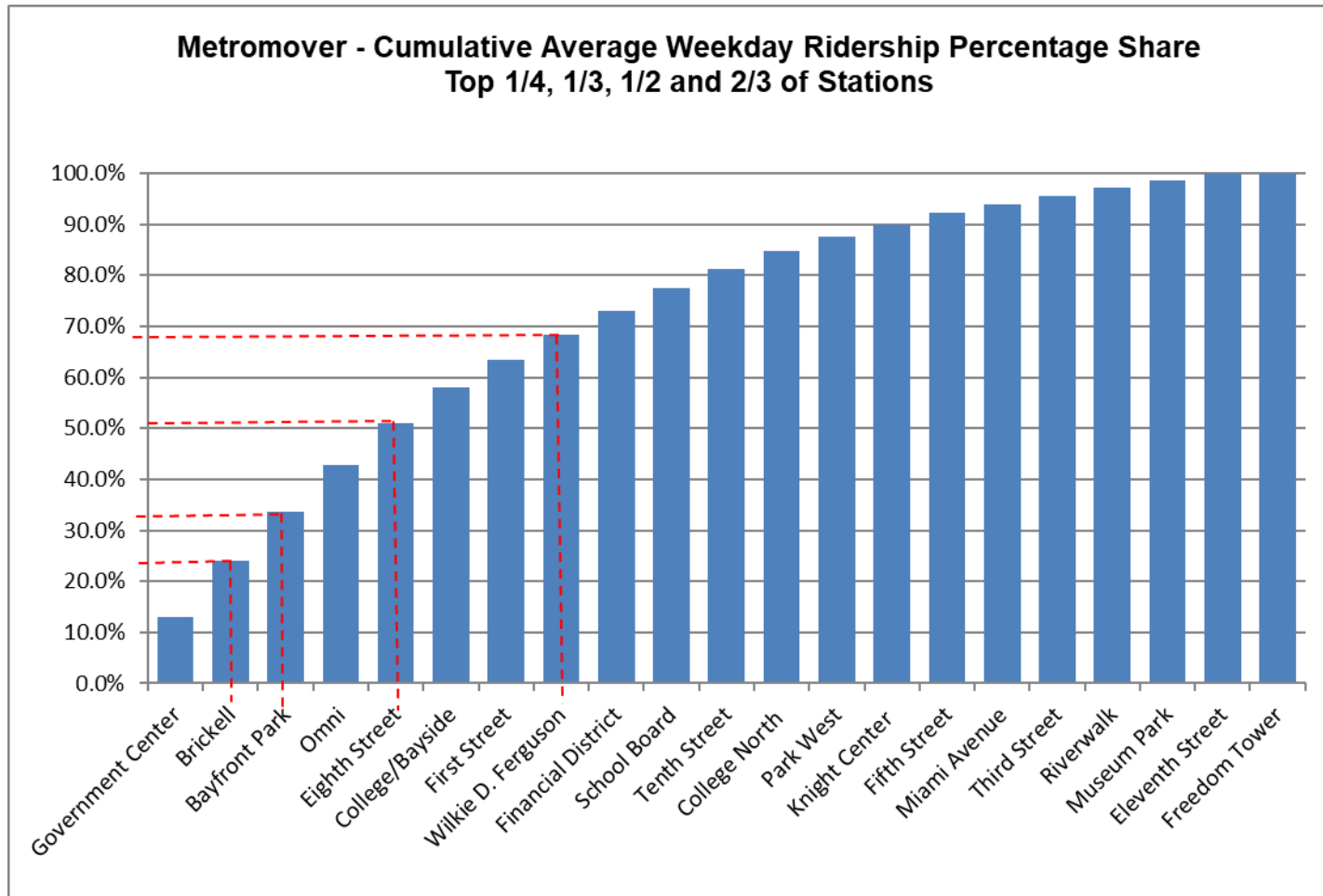
METROMOVER MONTHLY AND AVERAGE DAILY BOARDINGS BY STATION

	Average Weekday	Average Weekday	Percent Change	Average Saturday	Average Saturday	Percent Change	Average Sunday	Average Sunday	Percent Change	Dr. MLK, Jr. Birthday	Dr. MLK, Jr. Birthday	Percent Change	Total Monthly	Total Monthly	Percent Change
STATIONS	Jan-22	Jan-21	22 vs 21	Jan-22	Jan-21	22 vs 21	Jan-22	Jan-21	22 vs 21	Jan-22	Jan-21	22 vs 21	Jan-22	Jan-21	22 vs 21
School Board	681	429	58.6%	559	369	51.3%	493	321	53.7%	644	395	63.0%	19,528	12,388	57.6%
Omni	1,440	471	205.7%	1,183	402	194.4%	968	379	155.2%	1,355	423	220.3%	40,916	13,802	196.4%
Museum Park	233	95	143.8%	350	156	124.8%	313	138	127.1%	294	103	185.4%	8,259	3,482	137.2%
Eleventh Street	226	191	18.4%	209	129	61.9%	130	91	41.8%	260	188	38.3%	6,474	5,033	28.6%
Park West	445	266	67.4%	415	206	101.8%	355	157	126.4%	637	208	206.3%	13,384	7,241	84.8%
Freedom Tower															
Government Center	2,062	1,164	77.2%	1,478	962	53.7%	1,319	783	68.3%	1,702	946	79.9%	56,921	30,284	88.0%
Miami Avenue	271	233	16.0%	226	184	23.2%	167	175	-4.7%	218	213	2.3%	6,929	5,849	18.5%
Third Street	257	195	31.3%	222	142	56.2%	184	131	40.9%	221	209	5.7%	7,386	4,738	55.9%
Knight Center	380	287	32.4%	243	167	45.3%	262	164	60.1%	318	206	54.4%	10,434	7,527	38.6%
Bayfront Park	1,517	968	56.7%	1,380	978	41.1%	1,249	818	52.6%	1,444	722	100.0%	44,933	29,184	54.0%
First Street	865	685	26.3%	779	524	48.9%	648	489	32.6%	792	590	34.2%	25,222	17,089	47.6%
College/Bayside	1,106	700	57.8%	939	619	51.7%	764	512	49.4%	1,041			31,671	13,087	142.0%
College North	559	260	115.0%	389	140	176.8%	301	120	150.0%	442	161	174.5%	15,070	6,529	130.8%
Wilkie D. Ferguson	762	294	158.8%	639	296	116.4%	478	246	94.5%	547	279	96.1%	21,364	6,363	235.8%
Riverwalk	246	302	-18.4%	198	242	-17.9%	135	215	-36.9%	263	238	10.5%	6,610	8,570	-22.9%
Fifth Street	343	243	41.4%	265	173	53.1%	212	137	54.4%	341	180	89.4%	9,590	6,503	47.5%
Eighth Street	1,305	700	86.4%	1,297	695	86.6%	1,040	556	87.0%	1,426	706	102.0%	39,212	20,864	87.9%
Tenth Street	612	360	70.0%	557	304	83.1%	420	256	63.7%	576	305	88.9%	17,701	10,243	72.8%
Brickell	1,741	1,257	38.5%	1,442	1,057	36.4%	1,200	903	32.8%	1,629	477	241.5%	49,652	35,064	41.6%
Financial District	754	460	63.9%	500	303	64.7%	412	255	61.2%	665	319	108.5%	20,310	12,128	67.5%
TOTAL	15,803	9,561	65.3%	13,270	8,047	64.9%	11,050	6,847	61.4%	14,815	6,868	115.7%	451,566	255,968	76.4%

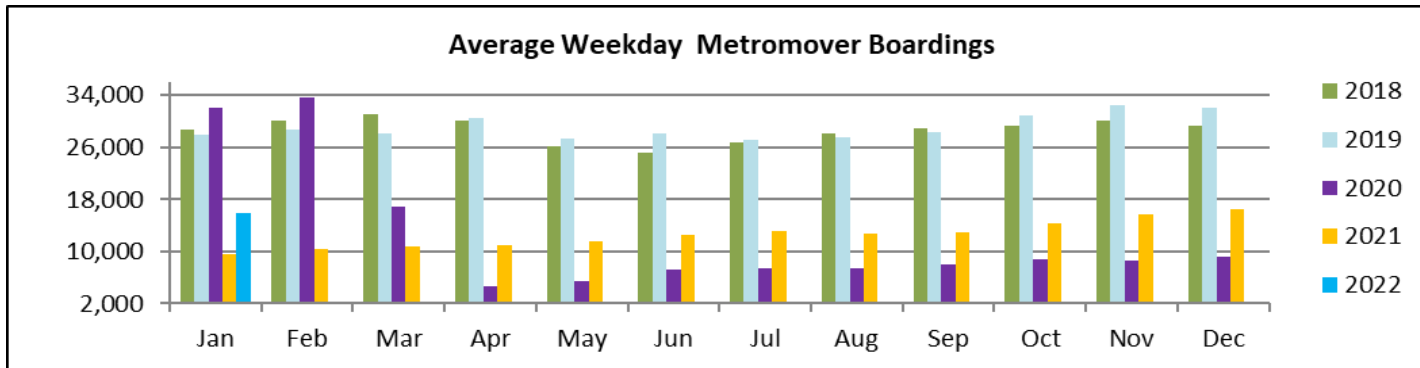
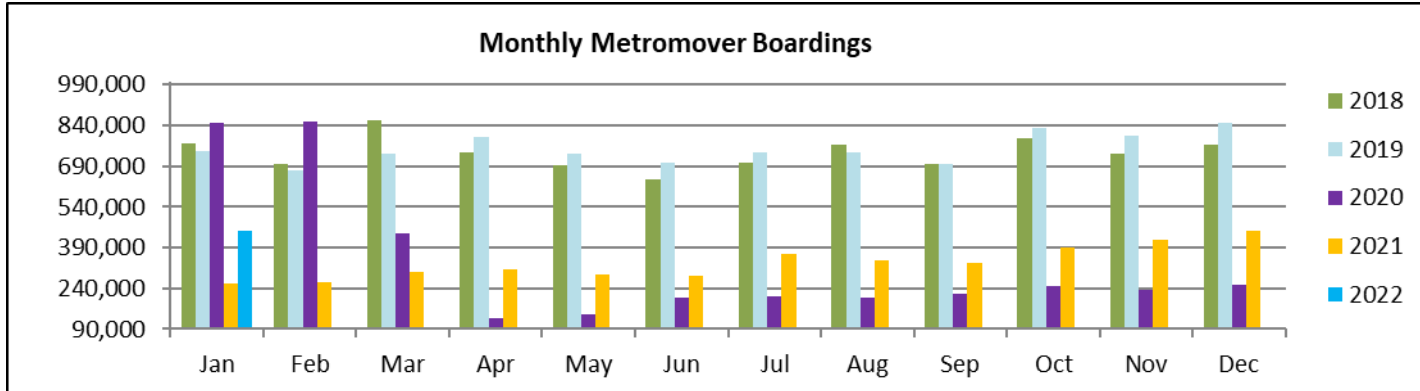
(1) Freedom Tower Station was closed for construction.

(*) APC system did not report boardings data at several stations on several days in January 2022; the average daily ridership calculations take this into account.

METROMOVER CUMULATIVE PERCENTAGE RIDERSHIP SHARE



TOTAL MONTHLY AND AVERAGE WEEKDAY RIDERSHIP YEAR OVER YEAR COMPARISON CHARTS – METROMOVER



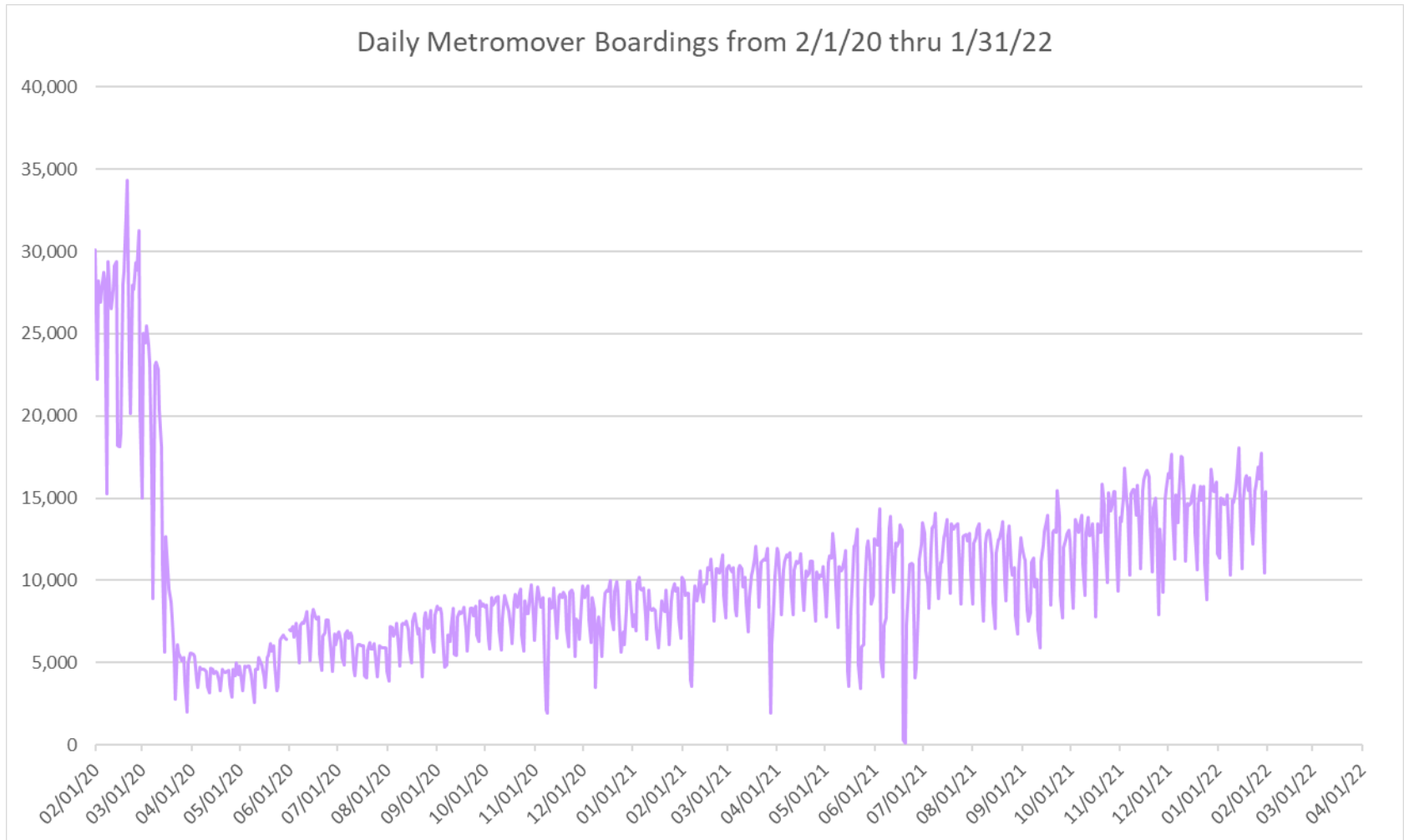
**“TOP 5 / BOTTOM 5” MOVER STATIONS AVERAGE WEEKDAY RIDERSHIP PERFORMANCE
YEAR OVER YEAR COMPARISONS**

Station	Jan-22	Jan-21	Absolute Delta (1)	Percent Delta
Omni	1,440	471	969	205.7%
Government Center	2,062	1,164	898	77.2%
Eighth Street	1,305	700	605	86.4%
Bayfront Park	1,517	968	549	56.7%
Brickell	1,741	1,257	484	38.5%
Riverwalk	246	302	-56	-18.4%
Eleventh Street	226	191	35	18.4%
Miami Avenue	271	233	37	16.0%
Third Street	257	195	61	31.3%
Knight Center	380	287	93	32.4%

(1) Averages rounded to the nearest boarding.

(†) Nearly all Metromover stations reporting YOY gains in January 2022, as January 2021 showed clear reduction effects on ridership from the SARS-CoV-2 pandemic.

DAILY METROMOVER RIDERSHIP SINCE FEBRUARY 1, 2020



- (1) National Emergency was declared on 3/13/20 as a result of the SARS-CoV-2 pandemic.
- (2) There was no Metrobus, Metrorail and Metromoverservice on 5/31/20, as a safety precaution.
- (3) The dip at the start of the second week of November 2020 is due to Hurricane Eta; these are *raw data* from the UTA contractor APC system. Other more recent dips are due to various station closures (mostly on weekends) for system maintenance purposes.
- (4) Periodic (weekly) variations are prominent, since weekday ridership is almost always significantly higher than weekend or holiday ridership.

Special Transportation Services

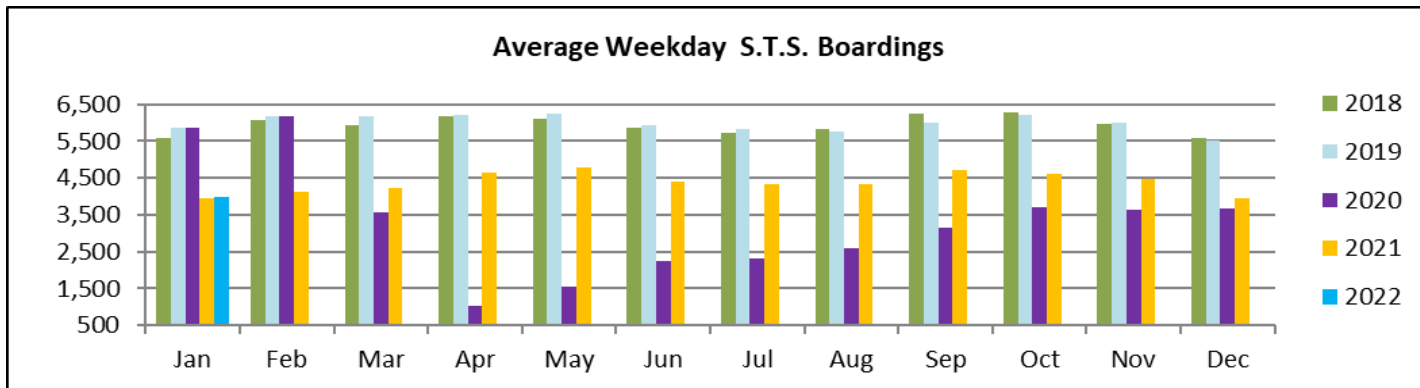
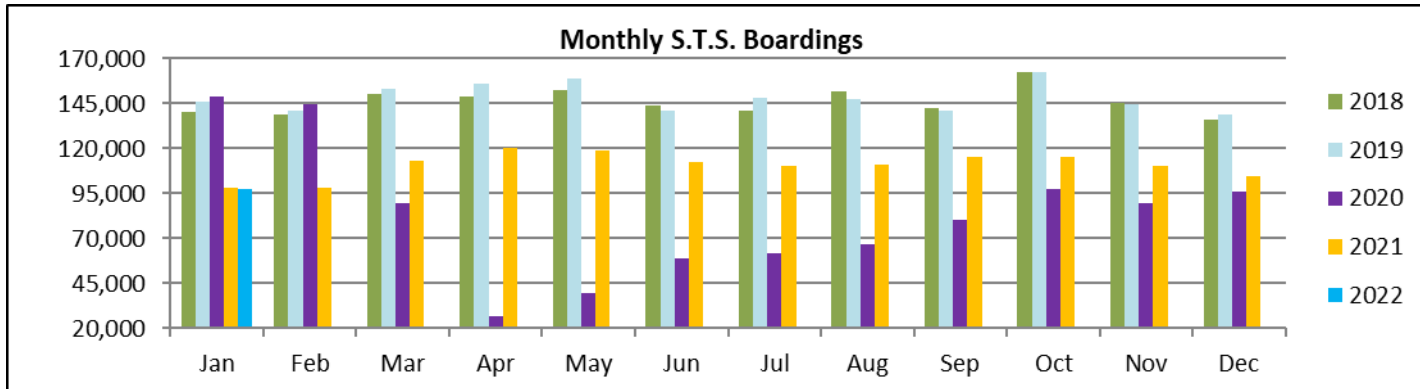


STS MONTHLY AND AVERAGE DAILY BOARDINGS
January 2022

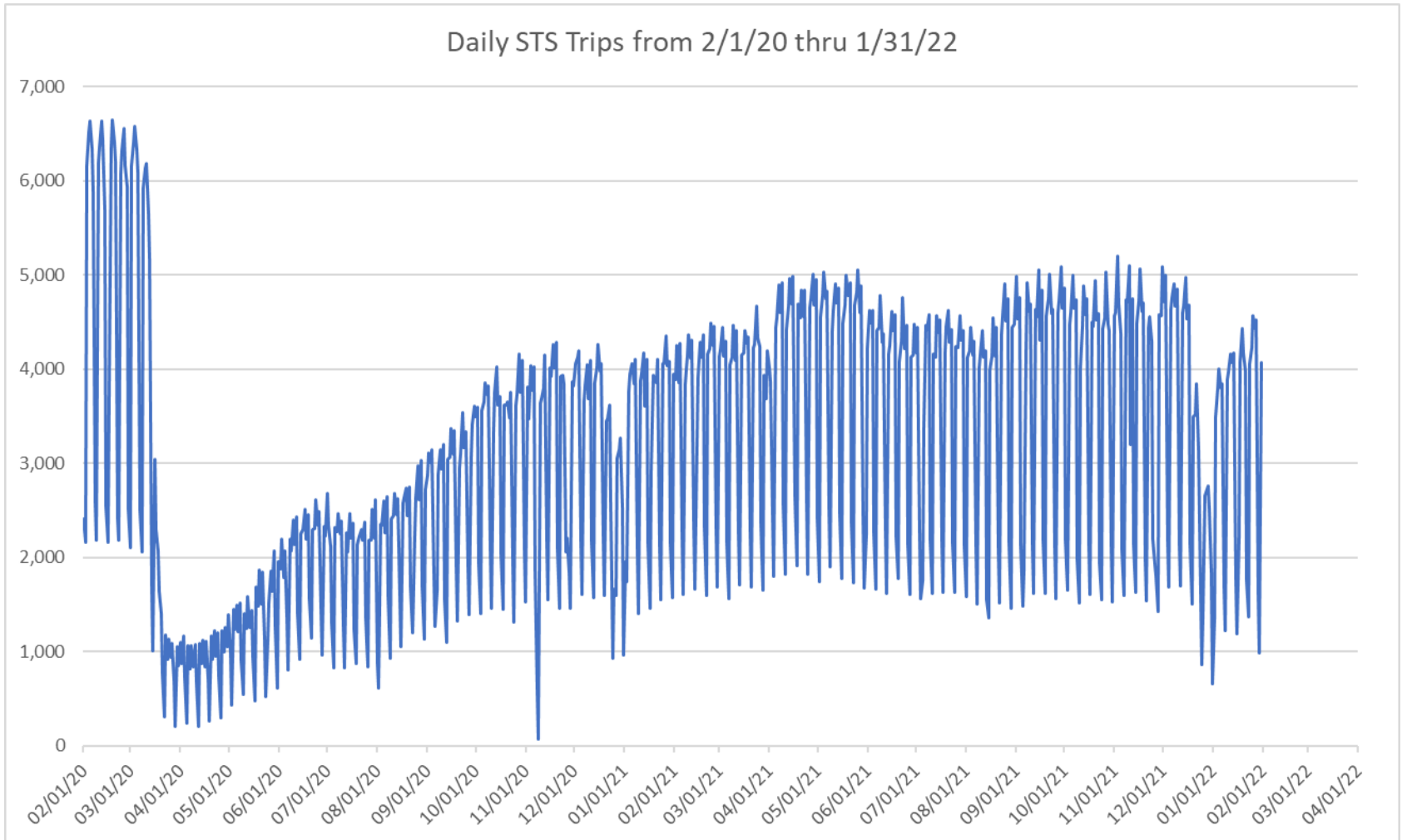
Measure	timeline	Ambulatory	Wheelchair	Total Clients (*)
Average Weekday	Jan-22	3,315	682	3,998
Average Saturday	Jan-22	1,211	283	1,494
Average Sunday	Jan-22	1,011	212	1,223
Total Monthly	Jan-22	80,732	16,809	97,541
Average Weekday	Jan-21	3,238	699	3,937
Average Saturday	Jan-21	1,693	402	2,095
Average Sunday	Jan-21	1,234	218	1,452
Total Monthly	Jan-21	80,622	17,306	97,928
Average Weekday	Jan-20	4,736	1,137	5,873
Average Saturday	Jan-20	1,980	566	2,546
Average Sunday	Jan-20	1,483	461	1,944
Total Monthly	Jan-20	119,523	29,591	149,114
% Change Current vs. Jan 2021 Weekday		2.4%	-2.4%	1.5%
% Change Current vs. Jan 2021 Saturday		-28.5%	-29.5%	-28.7%
% Change Current vs. Jan 2021 Sunday		-18.1%	-2.6%	-15.8%
% Change Current vs. Jan 2021 Month Total		0.1%	-2.9%	-0.4%
% Change Current vs. Jan 2020 Weekday		-30.0%	-40.0%	-31.9%
% Change Current vs. Jan 2020 Saturday		-38.8%	-50.0%	-41.3%
% Change Current vs. Jan 2020 Sunday		-31.9%	-54.0%	-37.1%
% Change Current vs. Jan 2020 Month Total		-32.5%	-43.2%	-34.6%

(*) Trip count data provided by STS contractor.

TOTAL MONTHLY AND AVERAGE WEEKDAY RIDERSHIP YEAR OVER YEAR COMPARISON CHARTS – SPECIAL TRANSPORTATION SERVICES (S.T.S.)

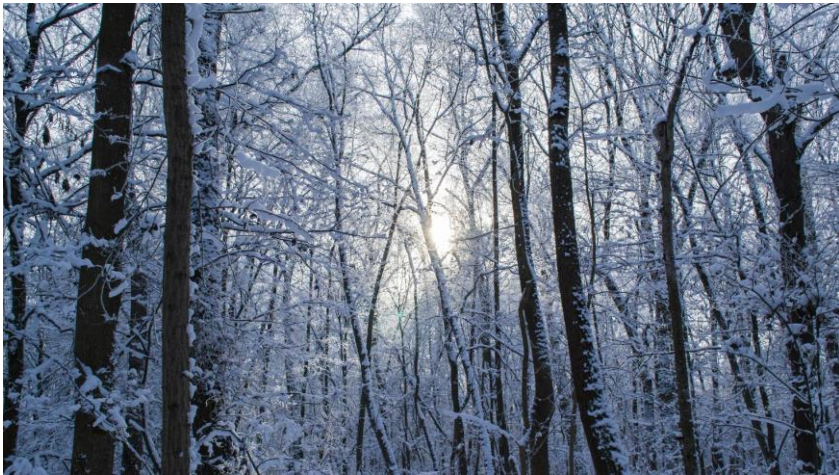


DAILY STS RIDERSHIP SINCE FEBRUARY 1, 2020

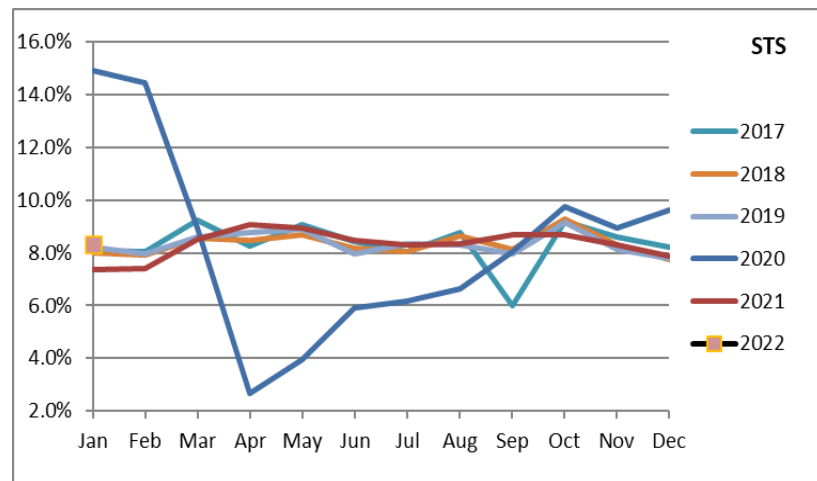
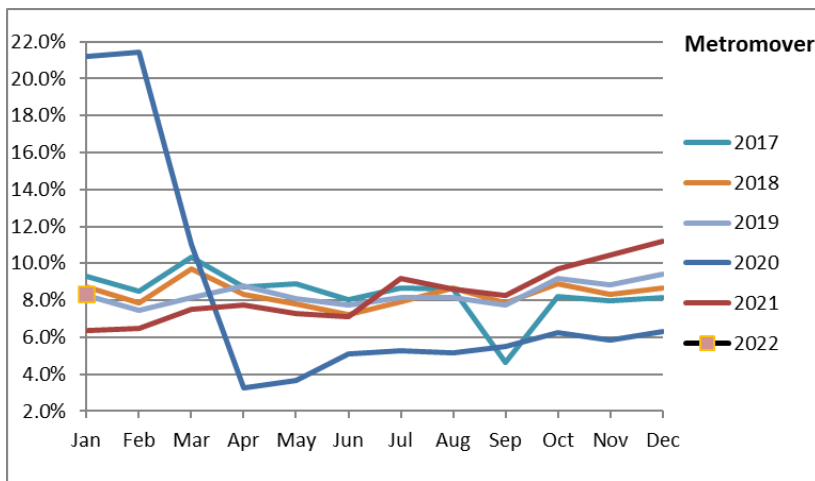
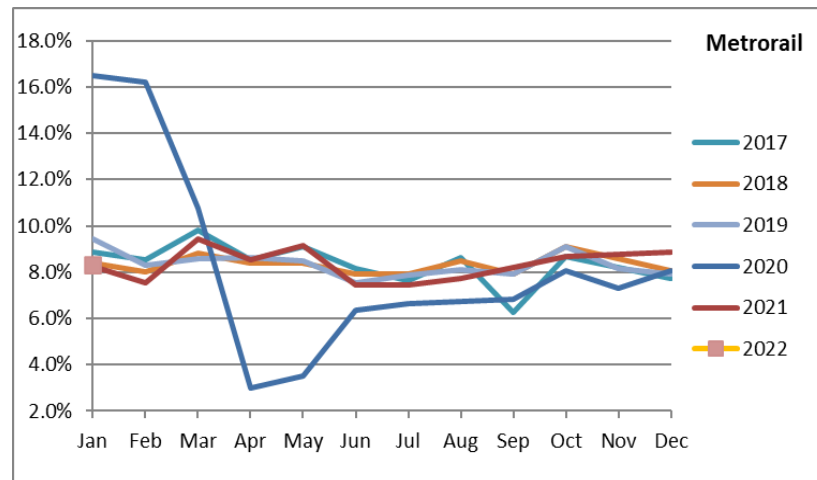
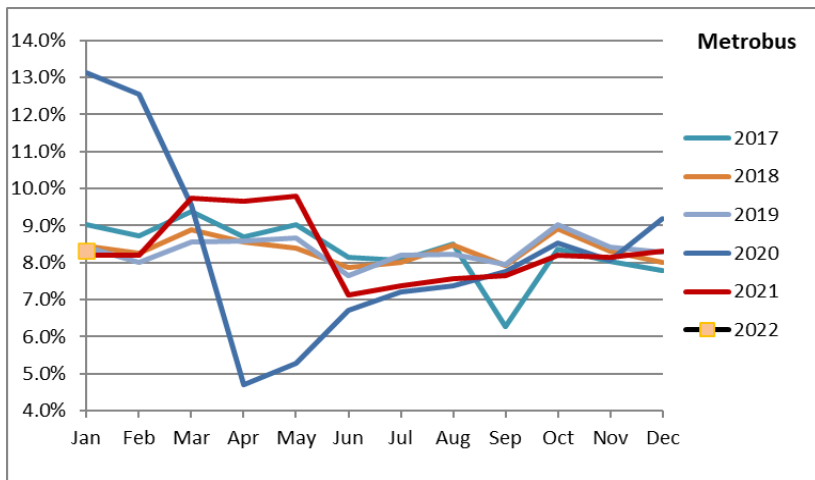


- (1) National Emergency was declared on 3/13/20 as a result of the SARS-CoV-2 pandemic.
- (2) The dip at the start of the second week of November 2020 is due to Hurricane Eta.
- (3) Periodic (weekly) variations are prominent, since weekday ridership is almost always significantly higher than weekend or holiday ridership.

Ridership Seasonality



RIDERSHIP SEASONALITY – PERCENT RIDERSHIP SHARE BY MONTH AND CALENDAR YEAR FOR EACH MODE



Note: the prominent dips seen in the fall of 2017 and beginning in the spring of 2020 are due to Hurricane Irma and the SARS-CoV-2 pandemic, respectively. Reductions in Bus and Rail ridership share seen beginning in June 2021 are due to reinstatement of fares as well changes in reporting tools and datasets, as discussed earlier in this report.