



TRANSPORTATION AND PUBLIC WORKS

RIDERSHIP TECHNICAL REPORT

Division of Performance and Materials Management



Table of Contents

<i>Table of Contents</i>	2-3
All Modes Overview	4
Total Monthly Weekday, Saturday and Sunday Monthly Boardings By Mode	5
Average Weekday, Saturday and Sunday Boardings by Mode	6
Metrobus Total Monthly Ridership Comparisons by Fiscal Year	7
Metrorail Total Monthly Ridership Comparisons by Fiscal Year	8
Metromover Total Monthly Ridership Comparisons by Fiscal Year	9
STS Total Monthly Ridership Comparisons by Fiscal Year	10
All-Modes Combined Total Monthly Ridership Comparisons By Fiscal Year	11
All Modes Combined Total Monthly and Average Weekday Ridership – Year over Year Comparison Charts	12
Average Weekday Ridership – Modal Splits	13
Daily Ridership for All Modes Combined since February 1, 2020	14
Metrobus	15
Metrobus Average Weekday Boardings by Route	16-18
Metrobus Average Saturday Boardings by Route	19-20
Metrobus Average Sunday Boardings by Route	21-22
Metrobus Monthly Total Boardings by Route	23-25
Metrobus Holiday Boardings by Route	26
Year-over-Year Bus Ridership by Route Service Type	27-28
Bus Routes as Ranked by Percentage of Average Weekday Ridership	29
Metrobus Cumulative Percentage Average Weekday Ridership Share by Route (Top 75%)	30
Total Monthly and Average Weekday Bus Ridership – Year over Year Comparison Charts	31
Bus “Top 5 / Bottom 5” Routes Average Weekday Ridership Performance	32
Daily Metrobus Ridership since February 1, 2020	33
Metrobus Parking Patronage Summary	34

Table of Contents (continued)

Metrorail	35
Metrorail Average Weekday Boardings by Station	36
Metrorail Average Saturday Boardings by Station	37
Metrorail Average Sunday Boardings by Station	38
Metrorail Total Monthly Boardings by Station	39
Metrorail Holiday Boardings	40
Metrorail Cumulative Percentage Average Weekday Ridership Share	41
Total Monthly and Average Weekday Rail Ridership – Year over Year Comparison Charts	42
“Top 5 / Bottom 5” Stations Average Weekday Ridership Performance	43
Daily Metrorail Ridership since February 1, 2020	44
Metrorail Parking Patronage Summary	45
Metromover	46
Monthly and Average Daily Mover Boardings by Station	47
Metromover Cumulative Percentage Average Weekday Ridership Share	48
Total Monthly and Average Weekday Mover Ridership – Year over Year Comparison Charts	49
“Top 5 / Bottom 5” Stations Average Weekday Ridership Performance	50
Daily Metromover Ridership since February 1, 2020	51
Special Transportation Services (STS)	52
STS Monthly and Average Daily Boardings	53
Total Monthly and Average Weekday STS Ridership – Year over Year Comparison Charts	54
Daily STS Ridership since February 1, 2020	55
Ridership Seasonality	56
Ridership Seasonality – Percent Ridership Share by Month and Calendar year for Each Mode	57

All Modes Overview



TOTAL MONTHLY WEEKDAY, SATURDAY AND SUNDAY BOARDINGS BY MODE
February 2022

TRAVEL MODE	MONTH'S TOTAL WEEKDAYS RIDERSHIP	MONTH'S TOTAL SATURDAYS RIDERSHIP	MONTH'S TOTAL SUNDAYS RIDERSHIP	TOTAL MONTHLY RIDERSHIP	% CHANGE vs Feb 2022 TOTAL MONTH RIDERSHIP
METROBUS (1)	2,481,693	299,602	214,494	2,995,789	-2.6%
METRORAIL (2)	770,297	75,832	59,033	905,162	23.9%
METROMOVER (3)	346,000	61,286	58,682	465,968	79.0%
STS PARATRANSIT (4)	91,246	8,273	6,187	105,706	7.6%
TOTAL	3,689,236	444,993	338,396	4,472,625	7.4%

(*) Total weekday ridership includes Monday, February 21, 2022 (Presidents Day Holiday); ridership on that day was as follows:

Metrobus	105,539
Metrorail	39,668
Metromover	14,488
STS	3,262

- (1) Metrobus fares resumed on June 1, 2021, following a 14-month period of fare-free rides as a result of the SARS-CoV-2 pandemic. The NextFare System farebox data replaced the bus automatic passenger counter data as ridership data of record starting on that date.
- (2) Metrorail fares resumed on June 1, 2021, following a 14-month period of fare-free rides as a result of the SARS-CoV-2 pandemic. The NextFare System faregate data replaced the video data as ridership data of record starting on that date.
- (3) Beginning March 13, 2020 (day of National Emergency Declaration due to SARS-CoV-2 pandemic), only raw data from Metromover automatic passenger counters is reported; no estimates are performed after March 13, 2020.
- (4) Paratransit ridership data as reported by the contractor.

**AVERAGE WEEKDAY, SATURDAY AND SUNDAY BOARDINGS BY MODE
February 2022**

Travel Mode	Average Weekday	Average Saturday	Average Sunday	% Change Feb 2021 Weekday	% Change Feb 2021 Saturday	% Change Feb 2021 Sunday
METROBUS	124,148	74,909	53,633	-1.2%	-7.9%	-11.1%
METRORAIL	38,454	18,958	14,758	17.2%	-0.3%	-0.9%
METROMOVER	17,448	15,322	14,671	69.3%	69.2%	87.6%
STS PARATRANSIT	4,562	2,068	1,547	10.7%	-10.9%	-5.7%
Totals (1)	184,613	111,257	84,609	6.8%	-0.4%	-0.1%

(*) Average weekday ridership includes Presidents Day for Metrobus and STS but excludes it for Metrorail and Metromover.

(**) Average daily ridership is calculated and published only for those days and stations with nontrivial amounts of reported data.

METROBUS TOTAL MONTHLY RIDERSHIP COMPARISONS BY FISCAL YEAR

Bus	Variance			Variance			Variance	Variance	Variance	
	FY 18	FY 19	18 to 19	FY 20	19 to 20	FY 21	FY 22	21 to 22	19 to 22	18 to 22
Oct	4,709,590	4,554,886	-3.3%	4,507,012	-1.1%	2,805,139	3,081,157	9.8%	-32.4%	-34.6%
Nov	4,522,250	4,245,535	-6.1%	4,197,225	-1.1%	2,651,290	3,056,726	15.3%	-28.0%	-32.4%
Dec	4,380,099	4,081,581	-6.8%	4,126,990	1.1%	3,022,530	3,123,883	3.4%	-23.5%	-28.7%
Jan	4,307,001	4,195,911	-2.6%	4,316,998	2.9%	3,082,746	3,029,055	-1.7%	-27.8%	-29.7%
Feb	4,208,811	3,994,019	-5.1%	4,123,083	3.2%	3,076,966	2,995,789	-2.6%	-25.0%	-28.8%
Mar	4,534,564	4,266,768	-5.9%	3,136,162	-26.5%	3,660,639				
Apr	4,360,997	4,291,135	-1.6%	1,544,316	-64.0%	3,625,048				
May	4,277,628	4,330,922	1.2%	1,734,609	-59.9%	3,683,343				
Jun	4,009,340	3,823,863	-4.6%	2,210,725	-42.2%	2,672,570				
Jul	4,080,664	4,094,906	0.3%	2,366,749	-42.2%	2,769,907				
Aug	4,326,980	4,109,613	-5.0%	2,422,014	-41.1%	2,843,552				
Sep	4,041,992	3,971,220	-1.8%	2,546,923	-35.9%	2,877,110				
FY Total	51,759,916	49,960,359	-3.5%	37,232,806	-25.5%	36,770,840				

METRORAIL TOTAL MONTHLY RIDERSHIP COMPARISONS BY FISCAL YEAR

Rail	FY 18	FY 19	Variance 18 to 19	FY 20	Variance 19 to 20	FY 21	FY 22	Variance 21 to 22	Variance 19 to 22	Variance 18 to 22
	Oct	1,708,564	1,757,225	2.8%	1,643,166	-6.5%	769,525	844,383	9.7%	-51.9%
Nov	1,609,888	1,656,929	2.9%	1,469,448	-11.3%	699,492	850,881	21.6%	-48.6%	-47.1%
Dec	1,517,341	1,553,804	2.4%	1,433,928	-7.7%	769,194	860,436	11.9%	-44.6%	-43.3%
Jan	1,615,576	1,708,695	5.8%	1,576,340	-7.7%	799,119	832,924	4.2%	-51.3%	-48.4%
Feb	1,545,581	1,501,458	-2.9%	1,549,118	3.2%	730,792	905,162	23.9%	-39.7%	-41.4%
Mar	1,700,714	1,554,851	-8.6%	1,027,319	-33.9%	917,097				
Apr	1,619,890	1,559,446	-3.7%	287,803	-81.5%	827,414				
May	1,618,504	1,531,597	-5.4%	337,696	-78.0%	887,111				
Jun	1,524,311	1,359,966	-10.8%	608,758	-55.2%	723,469				
Jul	1,527,380	1,419,158	-7.1%	632,964	-55.4%	722,159				
Aug	1,632,471	1,463,646	-10.3%	641,275	-56.2%	749,578				
Sep	1,530,088	1,427,726	-6.7%	654,244	-54.2%	795,749				
Total	19,150,308	18,494,501	-3.4%	11,862,059	-35.9%	9,390,699				

METROMOVER TOTAL MONTHLY RIDERSHIP COMPARISONS BY FISCAL YEAR

Mover	FY 18	FY 19	Variance 18 to 19	FY 20	Variance 19 to 20	FY 21	FY 22	Variance 21 to 22	Variance 19 to 22	Variance 18 to 22
	Oct	751,323	790,533	5.2%	831,234	5.1%	250,044	389,065	55.6%	-50.8%
Nov	729,519	735,198	0.8%	799,632	8.8%	232,422	418,929	80.2%	-43.0%	-42.6%
Dec	748,797	767,239	2.5%	849,832	10.8%	251,019	450,320	79.4%	-41.3%	-39.9%
Jan	772,122	746,728	-3.3%	847,773	13.5%	255,968	451,566	76.4%	-39.5%	-41.5%
Feb	698,107	675,160	-3.3%	855,398	26.7%	260,332	465,968	79.0%	-31.0%	-33.3%
Mar	859,143	737,814	-14.1%	441,200	-40.2%	302,502				
Apr	740,036	795,696	7.5%	130,549	-83.6%	310,772				
May	694,106	734,645	5.8%	146,454	-80.1%	292,922				
Jun	641,675	701,318	9.3%	203,637	-71.0%	286,145				
Jul	700,462	739,814	5.6%	210,596	-71.5%	368,847				
Aug	768,728	739,785	-3.8%	205,995	-72.2%	344,319				
Sep	698,505	699,879	0.2%	219,696	-68.6%	331,915				
Total	8,802,523	8,863,809	0.7%	5,741,996	-35.2%	3,487,207				

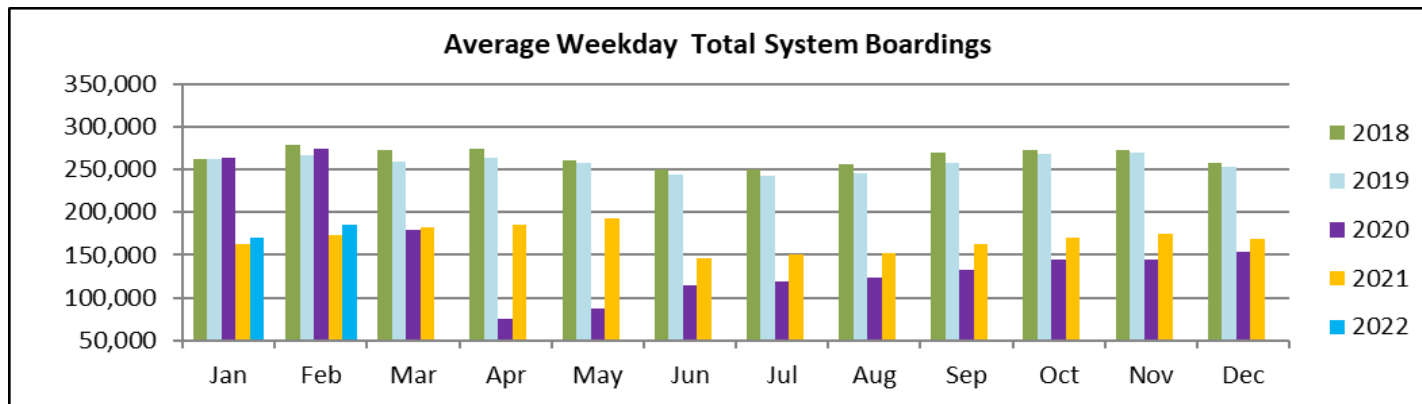
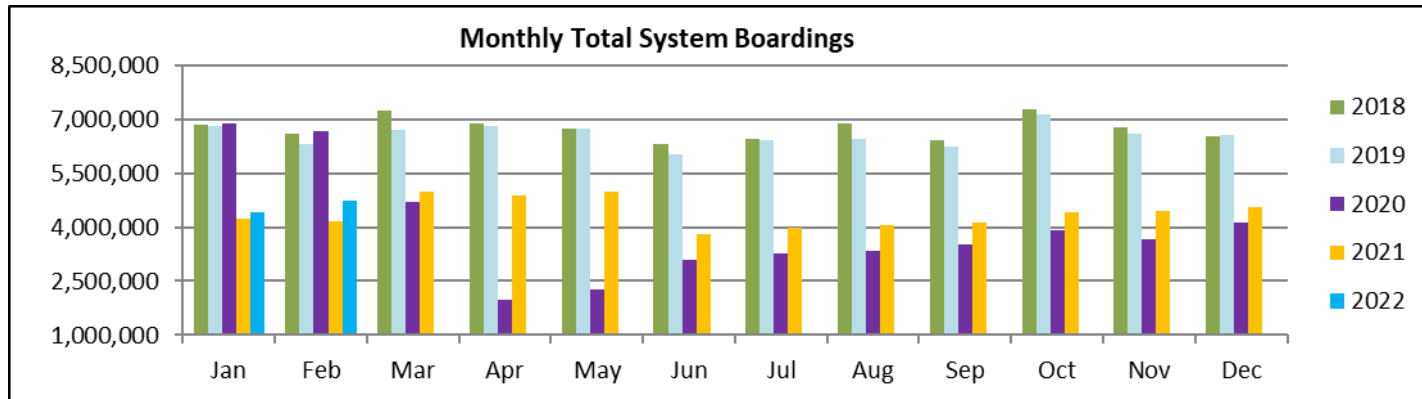
SPECIAL TRANSPORTATION SERVICES (STS) TOTAL MONTHLY RIDERSHIP COMPARISONS BY FISCAL YEAR

STS			Variance					Variance	Variance	Variance
	FY 18	FY 19	18 to 19	FY 20	19 to 20	FY 21	FY 22	21 to 22	19 to 22	18 to 22
Oct	153,409	162,564	6.0%	162,704	0.1%	97,388	115,122	18.2%	-29.2%	-25.0%
Nov	143,375	145,653	1.6%	144,366	-0.9%	89,387	110,289	23.4%	-24.3%	-23.1%
Dec	136,955	136,110	-0.6%	138,642	1.9%	96,366	104,496	8.4%	-23.2%	-23.7%
Jan	140,042	146,268	4.4%	149,114	1.9%	97,928	97,541	-0.4%	-33.3%	-30.3%
Feb	139,032	141,396	1.7%	144,392	2.1%	98,285	105,706	7.6%	-25.2%	-24.0%
Mar	150,384	153,191	1.9%	89,634	-41.5%	112,930				
Apr	148,879	155,808	4.7%	26,877	-82.7%	120,122				
May	152,164	158,665	4.3%	39,654	-75.0%	118,636				
Jun	143,653	141,320	-1.6%	59,093	-58.2%	112,397				
Jul	141,020	148,232	5.1%	61,765	-58.3%	110,059				
Aug	151,750	147,331	-2.9%	66,563	-54.8%	110,766				
Sep	142,360	141,387	-0.7%	80,346	-43.2%	115,406				
Total	1,743,023	1,777,925	2.0%	1,163,150	-34.6%	1,279,670				

ALL-MODES COMBINED TOTAL MONTHLY RIDERSHIP COMPARISONS BY FISCAL YEAR

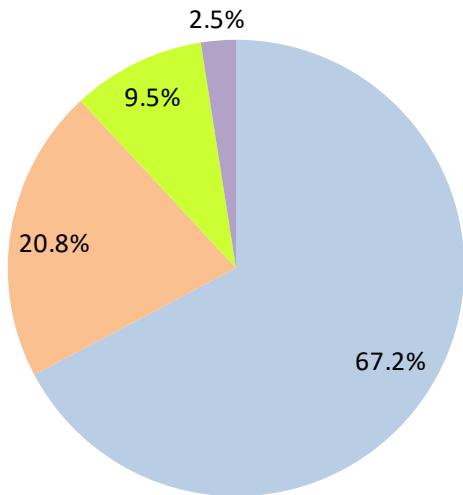
All Modes Month						Variances					
	FY 18	FY 19	FY 20	FY 21	FY 22	18 TO 19	19 TO 20	20 TO 21	21 TO 22	19 TO 22	18 TO 22
Oct	7,322,886	7,265,208	7,144,116	3,922,096	4,429,727	-0.8%	-1.7%	-45.1%	12.9%	-39.0%	-39.5%
Nov	7,005,032	6,783,315	6,610,671	3,672,591	4,436,825	-3.2%	-2.5%	-44.4%	20.8%	-34.6%	-36.7%
Dec	6,783,192	6,538,734	6,549,392	4,139,109	4,539,135	-3.6%	0.2%	-36.8%	9.7%	-30.6%	-33.1%
Jan	6,834,741	6,797,602	6,890,225	4,235,761	4,411,086	-0.5%	1.4%	-38.5%	4.1%	-35.1%	-35.5%
Feb	6,591,531	6,312,033	6,671,991	4,166,375	4,472,625	-4.2%	5.7%	-37.6%	7.4%	-29.1%	-32.1%
Mar	7,244,805	6,712,624	4,694,315	4,993,168		-7.3%	-30.1%	6.4%			
Apr	6,869,802	6,802,085	1,989,545	4,883,356		-1.0%	-70.8%	145.5%			
May	6,742,402	6,755,829	2,258,413	4,982,012		0.2%	-66.6%	120.6%			
Jun	6,318,979	6,026,467	3,082,213	3,794,581		-4.6%	-48.9%	23.1%			
Jul	6,449,526	6,402,110	3,272,074	3,970,972		-0.7%	-48.9%	21.4%			
Aug	6,879,929	6,460,375	3,335,847	4,048,215		-6.1%	-48.4%	21.4%			
Sep	6,412,945	6,240,212	3,501,209	4,120,180		-2.7%	-43.9%	17.7%			
FY Total	81,455,770	79,096,594	56,000,011	50,928,416		-2.9%	-29.2%	-9.1%			

TOTAL MONTHLY AND AVERAGE WEEKDAY RIDERSHIP YEAR OVER YEAR COMPARISON CHARTS – ALL MODES COMBINED



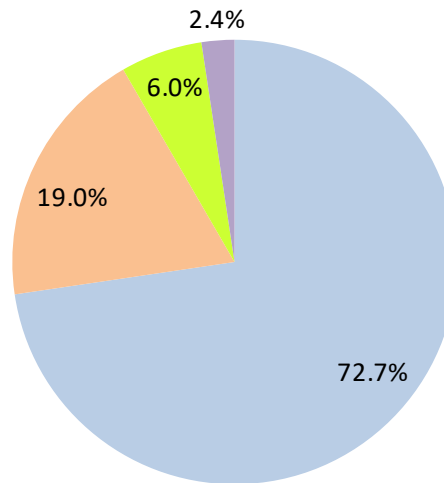
AVERAGE WEEKDAY RIDERSHIP - MODAL SPLITS

February 2022



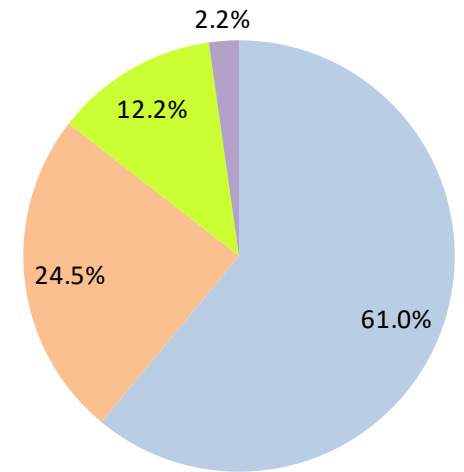
boardings

February 2021



boardings

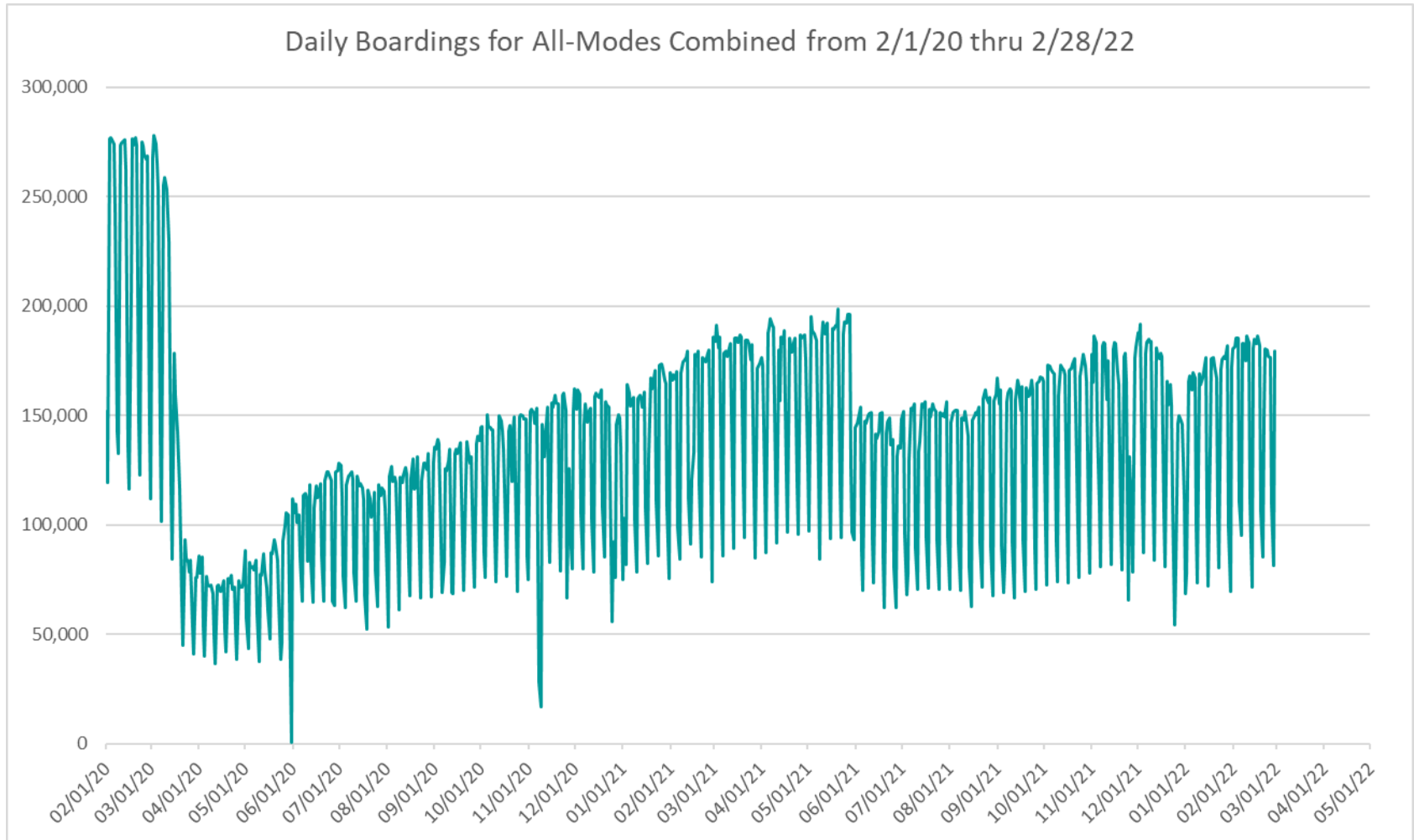
February 2020



boardings



DAILY RIDERSHIP FOR ALL MODES COMBINED SINCE FEBRUARY 1, 2020



- (1) National Emergency was declared on 3/13/20 as a result of the SARS-CoV-2 pandemic.
- (2) There was no Metrobus, Metrorail and Metromover service on 5/31/20, as a safety precaution.
- (3) The dip at the start of the second week of November 2020 is due to Hurricane Eta.
- (4) The reduction seen beginning 6/1/21 is partly due to the resumption of fares for bus and rail, and partly the result of having resumed reporting Cubic farebox data rather than bus APC counts, as well as Cubic rail faregate counts instead of video camera counts on that date.
- (5) Periodic (weekly) variations are prominent, since weekday ridership is almost always significantly higher than weekend or holiday ridership.

Metrobus



METROBUS AVERAGE WEEKDAY BOARDINGS BY ROUTE (†)

Route weekdays	Average Weekday	Average Weekday	Percent Change	Average Weekday	Percent Change	Average Weekday	Percent Change
	Feb-22	Feb-21	YOY	Feb-20	Current vs Feb-20	Jan-22	MOM
1 (*)	167	149	11.9%	184	-9.4%	183	-8.9%
2	2,035	2,050	-0.7%	3,102	-34.4%	1,867	9.0%
3	3,869	4,405	-12.2%	5,137	-24.7%	3,618	7.0%
7	2,753	2,061	33.6%	3,501	-21.4%	2,534	8.7%
8	3,428	3,634	-5.7%	3,909	-12.3%	3,187	7.6%
9	4,084	5,621	-27.3%	5,528	-26.1%	4,055	0.7%
10	1,865	1,718	8.5%	2,482	-24.9%	1,637	13.9%
11	6,272	5,813	7.9%	7,292	-14.0%	5,908	6.2%
12	1,936	2,079	-6.9%	2,779	-30.4%	1,731	11.8%
16	1,413	1,365	3.5%	1,862	-24.1%	1,383	2.1%
17	2,716	2,905	-6.5%	3,878	-30.0%	2,668	1.8%
19	860	1,103	-22.0%	1,542	-44.2%	820	4.9%
21	1,250	1,668	-25.1%	1,817	-31.2%	1,176	6.3%
22	2,755	2,678	2.9%	3,640	-24.3%	2,531	8.8%
24 - Coral Way Limited	1,476	1,400	5.4%	1,340	10.2%	1,343	9.9%
27	5,061	5,624	-10.0%	6,972	-27.4%	4,647	8.9%
29 (*)	442	378	17.0%	534	-17.3%	399	10.7%
31 - BUSWAY LOCAL	666	553	20.4%	1,089	-38.9%	643	3.6%
32	1,774	1,508	17.7%	2,390	-25.7%	1,619	9.6%
33	1,158	1,061	9.1%	1,687	-31.4%	1,097	5.5%
34 EXPRESS	989	837	18.2%	2,008	-50.8%	876	12.9%
35	1,563	1,776	-12.0%	2,421	-35.4%	1,420	10.0%
36	2,099	1,870	12.3%	2,536	-17.2%	1,953	7.5%
37	2,552	2,805	-9.0%	3,273	-22.0%	2,439	4.7%
38	4,059	4,479	-9.4%	6,361	-36.2%	3,840	5.7%
39 EXPRESS		233		893		215	
40	1,338	1,155	15.9%	1,772	-24.5%	1,264	5.8%
42	683	707	-3.4%	820	-16.8%	638	6.9%
46 - LIBERTY CITY CONN. (*)	21	26	-17.4%	41	-47.4%	18	15.8%
51 - FLAGLER MAX	2,653	2,177	21.8%	3,109	-14.7%	2,520	5.3%
52	876	920	-4.8%	1,261	-30.6%	838	4.5%
54	2,180	2,521	-13.5%	2,940	-25.9%	1,993	9.4%
55 MARLINS SHUTTLE							
56 (*)	269	193	39.4%	354	-23.8%	225	19.5%
57	276	285	-3.2%	433	-36.4%	257	7.1%
62	1,248	1,637	-23.8%	1,815	-31.3%	1,175	6.1%
71 (*)	481	382	26.1%	711	-32.3%	444	8.3%
72 (*)	526	418	26.0%	781	-32.7%	487	8.1%

(†) In this table and those which follow, "YOY" stands for "year-over-year", "MOM" for "month-over-month" and "YO2Y" for "year over two years", i.e., current month vs 12 months prior, one month prior, and 24 months prior, respectively.

(*) Contracted routes

(**) Due to effects from the SARS-CoV-2 pandemic; rides were fare-free beginning March 22, 2020; fares were reinstated on June 1, 2021, in part accounting for the drop in ridership from May 2021.

METROBUS AVERAGE WEEKDAY BOARDINGS BY ROUTE

Route <i>weekdays</i>	Average Weekday	Average Weekday	Percent Change	Average Weekday	Percent Change	Average Weekday	Percent Change
	Feb-22	Feb-21	YOY	Feb-20	Current vs Feb-20	Jan-22	MOM
73	1,948	1,675	16.3%	2,124	-8.3%	1,823	6.9%
75	864	1,049	-17.6%	1,429	-39.5%	829	4.2%
77	5,923	6,413	-7.6%	7,129	-16.9%	5,807	2.0%
79 STREET MAX	297			361	-17.8%	265	12.0%
82 - WESTCHESTER CIRC. (*)	30	29	2.7%	62	-50.8%	24	25.5%
87	1,305	1,166	11.9%	1,499	-13.0%	1,169	11.6%
88	1,619	1,676	-3.4%	2,076	-22.0%	1,512	7.1%
93 - BISCAYNE MAX	2,329	1,753	32.9%	3,334	-30.2%	2,169	7.4%
95 EXPRESS	724	397	82.3%	1,690	-57.2%	573	26.3%
99	1,185	1,219	-2.8%	1,473	-19.6%	1,139	4.0%
101 - A (*)	187	110	69.6%	177	5.6%	162	15.7%
102 - B	1,449	1,010	43.4%	1,778	-18.5%	1,293	12.1%
103 - C		315		463		248	
104	533	361	47.5%	837	-36.4%	524	1.6%
105 - E	983	1,048	-6.2%	1,287	-23.6%	923	6.5%
107 - G	1,291	1,050	23.0%	1,713	-24.6%	1,184	9.1%
108 - H	375	400	-6.4%	473	-20.7%	360	4.0%
110 - J	2,025	2,701	-25.0%	2,508	-19.3%	1,878	7.8%
112 - L	6,012	7,280	-17.4%	7,636	-21.3%	5,956	0.9%
113 - M	552	611	-9.6%	866	-36.2%	472	17.1%
115 (*)	141	172	-17.9%	180	-21.7%	143	-1.6%
119 - S	7,434	8,229	-9.7%	8,970	-17.1%	7,125	4.3%
120 - BEACH MAX	5,237	4,760	10.0%	6,667	-21.5%	4,845	8.1%
132 TRI-RAIL (DORAL)	12	22	-44.8%	16	-23.6%	4	176.5%
135	935	800	16.8%	1,399	-33.2%	909	2.8%
136	123	62	96.5%	126	-2.8%	127	-3.1%
137 - WEST DADE CONN.	1,265	1,101	14.9%	1,626	-22.2%	1,116	13.3%
150 - MIAMI BEACH AIRPORT FLYER	1,358	1,145	18.5%	1,867	-27.3%	1,243	9.3%
155 - BISCAYNE GARDENS CIRCULATOR (*)	30	29	0.9%	44	-33.0%	27	7.4%
175 - NW MIAMI-DADE EXPRESS				33			
183	2,308	2,501	-7.7%	3,149	-26.7%	2,191	5.3%
195 EXPRESS - BROWARD BLVD				372			
196 EXPRESS - SHERIDAN ST				383			
200 - CUTLER BAY LOCAL	77	126	-39.3%	158	-51.4%	73	5.2%
202 - LITTLE HAITI CONN. (*)	116	117	-1.4%	140	-17.2%	100	16.0%
204 KILLIAN KAT	418			1,071	-60.9%	352	19.0%

METROBUS AVERAGE WEEKDAY BOARDINGS BY ROUTE

Route weekdays	Average Weekday	Average Weekday	Percent Change	Average Weekday	Percent Change	Average Weekday	Percent Change
	Feb-22	Feb-21	YOY	Feb-20	Current vs Feb-20	Jan-22	MOM
207 (7st) - LITTLE HAVANA CIRC	1,102	766	43.8%	1,489	-26.0%	1,002	10.1%
208 (8st) - LITTLE HAVANA CIRC	991	761	30.2%	1,308	-24.2%	907	9.3%
210 - SKYLAKE CIRC (*)	266	327	-18.5%	282	-5.5%	289	-8.0%
211 - OVERTOWN CIRC. (*)	88	48	83.2%	58	51.1%	80	9.0%
212 - SWEETWATER CIRC. (*)	30	13	123.0%	15	103.4%	30	-0.9%
217 - BUNCHE PARK CIRC (*)	67	67	0.9%	97	-31.1%	66	2.1%
238 EAST/WEST CONN.	382	327	16.8%	449	-14.9%	350	9.3%
241 TUTTLE LIMITED	76					60	27.1%
246 - NIGHT OWL	40	86	-53.9%	94	-57.5%	32	23.3%
248 - PRINCETON CIRCULATOR (*)	79	83	-5.0%	135	-41.5%	79	-0.4%
252 - CORAL REEF MAX	602	492	22.3%	851	-29.2%	547	10.2%
254 - BROWNSVILLE CIRC. (*)	8	21	-62.0%	19	-58.6%	8	0.6%
267 - LUDLAM LIMITED (*)	118	116	2.2%	149	-20.7%	106	11.8%
272 SUNSET KAT (*)	299	259	15.7%	550	-45.6%	264	13.5%
277 - 7th AVENUE MAX	517	463	11.6%	683	-24.4%	436	18.4%
286 - NORTH POINTE CIRC. (*)	54	33	62.6%	97	-44.9%	17	215.6%
287 - SAGA BAY MAX	203	147	38.1%	358	-43.2%	172	18.0%
288 - KENDALL CRUISER	408			762	-46.5%	327	24.7%
295 EXPRESS - BROWARD BLVD - CIVIC CENTER				233			
296 EXPRESS - SHERIDAN ST - CIVIC CENTER				215			
297-27th AVENUE ORANGE MAX	835	888	-6.0%	1,356	-38.4%	779	7.2%
301 DADE-MONROE EXPRESS(*)	771	890	-13.3%	841	-8.3%	756	2.0%
302 CARD SOUND EXPRESS(*)	70	79	-11.7%	86	-19.1%	66	6.4%
344 (*)	53	76	-31.0%	96	-45.2%	52	1.5%
500	13	63	-79.1%	81	-83.6%	11	26.0%
836 EXPRESS	135					109	23.2%
GREEN HILLS SHUTTLE (*)	5	7	-25.9%	9	-44.4%	8	-37.5%
KINGS CREEK SHUTTLE (*)	11	8	46.7%	13	-15.4%	17	-33.3%
SIERRALAKES SHUTTLE (*)	16	19	-14.5%	45	-63.9%	17	-1.5%
ROBERT SHARP SHUTTLE (*)	19	22	-13.6%	10	100.0%	21	-7.3%
AHEPA SHUTTLE (*)	17	20	-14.8%	21	-16.9%	21	-17.9%
Total	124,148	125,599	-1.2%	167,711	-26.0%	116,841	6.3%

(*) The following routes are entirely operated under contract: 1, 29, 46, 56, 71, 72, 82, 101-A, 115, 155, 202, 210, 211, 212, 217, 246, 248, 254, 267, 272, 286, 301, 302 and 344.

(1) Includes shuttles and those routes which were not run both years.

(2) Several express routes were suspended beginning at the end of March 2020, due to the SARS-CoV-2 pandemic, while other routes had alignment and schedule modifications made to them, in an ongoing effort to optimize service delivery.

METROBUS AVERAGE SATURDAY BOARDINGS BY ROUTE

Route	Average Saturday	Average Saturday	Percent Change	Average Saturday	Percent Change	Average Saturday	Percent Change
	Feb-22	Feb-21	YOY	Feb-20	Current vs Feb-20	Jan-22	MOM
Saturdays							
1 (*)	111	181	-38.6%	215	-48.4%	98	13.7%
2	1,090	1,016	7.3%	1,616	-32.6%	859	26.9%
3	4,077	4,255	-4.2%	5,229	-22.0%	3,447	18.3%
7	1,665	1,218	36.7%	1,887	-11.8%	1,308	27.2%
8	1,895	2,216	-14.5%	2,027	-6.5%	1,671	13.4%
9	2,459	3,105	-20.8%	3,034	-18.9%	2,374	3.6%
10	1,475	1,724	-14.5%	1,896	-22.2%	1,339	10.1%
11	4,577	3,535	29.5%	5,182	-11.7%	3,719	23.0%
16	1,220	1,420	-14.1%	1,566	-22.1%	1,065	14.5%
17	1,800	1,919	-6.2%	2,363	-23.8%	1,456	23.6%
22	1,614	1,888	-14.5%	2,084	-22.6%	1,360	18.7%
24 - Coral Way Limited	1,052	1,084	-3.0%	1,165	-9.8%	846	24.3%
27	3,044	4,094	-25.7%	4,034	-24.6%	2,545	19.6%
31 - BUSWAY LOCAL	583	922	-36.7%	896	-34.9%	465	25.3%
32	833	902	-7.7%	1,029	-19.1%	683	22.0%
33	727	708	2.6%	951	-23.5%	611	18.9%
35	1,045	1,242	-15.9%	1,372	-23.8%	880	18.7%
36	1,213	1,166	4.0%	1,289	-5.9%	1,066	13.8%
37	1,615	1,792	-9.9%	2,090	-22.7%	1,371	17.8%
38	3,414	3,299	3.5%	4,715	-27.6%	2,935	16.3%
40	563	597	-5.7%	655	-14.1%	446	26.0%
42	501	615	-18.7%	552	-9.3%	357	40.4%
52	470	562	-16.3%	686	-31.5%	356	32.0%
54	1,441	1,697	-15.1%	1,727	-16.6%	1,132	27.3%
55 MARLINS SHUTTLE							
62	917	1,213	-24.4%	1,343	-31.7%	815	12.5%
71 (*)	192	205	-6.2%	252	-23.7%	135	42.2%
72 (*)	286	269	6.2%	350	-18.3%	245	16.4%
73	928	832	11.5%	860	7.8%	793	16.9%
75	264	437	-39.7%	468	-43.7%	271	-2.6%
77	3,858	3,223	19.7%	4,197	-8.1%	3,402	13.4%
87	405	424	-4.5%	402	0.6%	312	29.6%
88	1,272	1,362	-6.6%	1,620	-21.5%	1,055	20.5%
99	809	855	-5.4%	849	-4.7%	662	22.1%

METROBUS AVERAGE SATURDAY BOARDINGS BY ROUTE

Route Saturdays	Average Saturday	Average Saturday	Percent Change	Average Saturday	Percent Change	Average Saturday	Percent Change
	Feb-22	Feb-21	YOY	Feb-20	Current vs Feb-20	Jan-22	MOM
101 - A (*)	60	58	4.3%	71	-14.9%	52	16.8%
102 - B	754	575	31.1%	851	-11.4%	614	22.7%
103 - C		349		315		125	
104	295	182	62.7%	468	-37.0%	252	17.3%
105 - E	598	743	-19.5%	619	-3.4%	503	18.9%
107 - G	992	1,098	-9.6%	1,066	-6.9%	869	14.1%
108 - H	332	395	-15.8%	372	-10.7%	268	24.2%
110 - J	1,468	1,848	-20.6%	1,952	-24.8%	1,303	12.6%
112 - L	4,389	5,268	-16.7%	5,667	-22.5%	4,502	-2.5%
113 - M	345	481	-28.4%	503	-31.5%	294	17.4%
115 (*)	95	135	-29.7%	82	15.3%	92	3.0%
119 - S	5,355	6,421	-16.6%	6,861	-22.0%	5,613	-4.6%
120 - BEACH MAX	3,844	3,723	3.2%	4,744	-19.0%	3,532	8.8%
135	331	367	-10.0%	539	-38.6%	306	8.1%
137 - WEST DADE CONN.	898	876	2.6%	1,027	-12.5%	678	32.5%
150 - MIAMI BEACH AIRPORT FLYER	1,347	1,256	7.2%	1,604	-16.0%	1,216	10.8%
183	1,456	1,722	-15.4%	1,790	-18.6%	1,229	18.5%
200 - CUTLER BAY LOCAL	34	108	-68.3%	119	-71.2%	38	-9.6%
202 - LITTLE HAITI CONN. (*)	61	109	-43.9%	50	22.0%	64	-3.7%
207 (7st) - LITTLE HAVANA CIRC	801	926	-13.5%	1,032	-22.5%	644	24.4%
208 (8st) - LITTLE HAVANA CIRC	654	684	-4.4%	1,044	-37.4%	599	9.3%
210 - SKYLAKE CIRC (*)	149	148	0.5%	165	-9.7%	154	-3.1%
241 TUTTLE LIMITED	36					31	15.3%
246 - NIGHT OWL	51	89	-42.3%	84	-39.3%	52	-1.1%
252 - CORAL REEF MAX	244	275	-11.5%	302	-19.4%	212	15.1%
286 - NORTH POINTE CIRC. (*)	50	34	45.3%	41	21.9%	34	46.3%
301 DADE-MONROE EXPRESS(*)	742	915	-18.9%	801	-7.4%	744	-0.3%
302 CARD SOUND EXPRESS(*)	42	89	-52.8%	57	-26.2%	31	36.4%
338 - WEEKEND EXPRESS	143	206	-30.8%	237	-39.7%	124	15.5%
500	13	91	-85.8%	70	-81.4%	8	71.1%
12/21 WEEKEND INTERL.	1,865	2,148	-13.2%	2,528	-26.2%	1,700	9.7%
FEDERATION GARDENSSHUTTLE (*)	24	17	39.7%	28	-16.4%	20	17.6%
Total	74,909	81,346	-7.9%	93,742	-20.1%	66,009	13.5%

METROBUS AVERAGE SUNDAY BOARDINGS BY ROUTE

Route Sundays	Average Sunday	Average Sunday	Percent Change	Average Sunday	Percent Change	Average Sunday	Percent Change
	Feb-22	Feb-21	YOY	Feb-20	Current vs Feb-20	Jan-22	MOM
1 (*)	111	155	-28.3%	201	-44.6%	81	37.3%
2	812	635	27.7%	1,335	-39.2%	782	3.8%
3	3,105	3,904	-20.5%	4,353	-28.7%	2,987	3.9%
7	1,150	816	40.9%	1,654	-30.5%	1,006	14.3%
8	1,288	1,409	-8.6%	1,746	-26.2%	1,213	6.2%
9	1,657	2,508	-34.0%	2,549	-35.0%	1,793	-7.6%
10	1,036	1,004	3.2%	1,441	-28.1%	976	6.2%
11	2,818	2,229	26.4%	3,917	-28.0%	2,668	5.6%
16	695	661	5.2%	997	-30.3%	711	-2.3%
17	1,266	1,298	-2.4%	1,833	-30.9%	1,098	15.3%
22	1,197	1,351	-11.4%	1,548	-22.7%	1,114	7.4%
24 - Coral Way Limited	777	803	-3.2%	905	-14.2%	693	12.0%
27	1,921	2,895	-33.6%	2,918	-34.2%	1,693	13.4%
31 - BUSWAY LOCAL	418	550	-24.0%	715	-41.5%	361	15.8%
32	487	546	-10.8%	772	-37.0%	389	25.0%
33	418	494	-15.5%	607	-31.2%	330	26.4%
35	628	906	-30.7%	942	-33.3%	621	1.2%
36	866	1,098	-21.2%	1,111	-22.0%	728	18.9%
37	1,134	1,111	2.1%	1,739	-34.8%	1,066	6.4%
38	2,816	2,766	1.8%	4,147	-32.1%	2,562	9.9%
40	317	336	-5.7%	447	-29.2%	309	2.4%
42	277	313	-11.6%	416	-33.5%	241	14.8%
52	296	422	-29.8%	466	-36.5%	257	15.3%
54	803	1,115	-27.9%	1,171	-31.4%	749	7.3%
55 MARLINS SHUTTLE							
62	525	949	-44.7%	891	-41.0%	473	11.1%
71 (*)	99	129	-23.1%	162	-38.7%	88	13.0%
72 (*)	262	217	20.7%	265	-0.9%	219	19.9%
73	406	362	12.2%	495	-18.0%	358	13.5%
75	191	361	-47.0%	271	-29.5%	198	-3.5%
77	2,298	2,655	-13.4%	2,815	-18.4%	2,207	4.1%
87	274	215	27.2%	319	-14.2%	224	22.2%
88	906	768	18.0%	1,286	-29.5%	799	13.4%
99	510	612	-16.7%	658	-22.5%	467	9.2%

METROBUS AVERAGE SUNDAY BOARDINGS BY ROUTE

Route Sundays	Average Sunday	Average Sunday	Percent Change	Average Sunday	Percent Change	Average Sunday	Percent Change
	Feb-22	Feb-21	YOY	Feb-20	Current vs Feb-20	Jan-22	MOM
101 - A (*)	28	72	-61.2%	56	-49.5%	43	-34.9%
102 - B	540	520	3.8%	717	-24.7%	547	-1.4%
103 - C		232		212		107	
104	203	221	-8.0%	317	-36.0%	180	12.8%
105 - E	536	632	-15.3%	616	-13.0%	480	11.5%
107 - G	627	912	-31.2%	895	-30.0%	662	-5.4%
108 - H	251	358	-29.8%	328	-23.5%	248	1.5%
110 - J	1,173	1,319	-11.1%	1,638	-28.4%	1,110	5.7%
112 - L	3,465	3,824	-9.4%	4,804	-27.9%	3,179	9.0%
113 - M	300	323	-7.2%	431	-30.4%	272	10.1%
115 (*)	77	130	-40.9%	80	-4.4%	95	-19.5%
119 - S	5,725	6,319	-9.4%	7,141	-19.8%	5,398	6.1%
120 - BEACH MAX	2,134	2,259	-5.6%	3,469	-38.5%	2,259	-5.6%
135	234	240	-2.5%	349	-33.1%	230	1.5%
137 - WEST DADE CONN.	608	623	-2.5%	879	-30.9%	547	11.1%
150 - MIAMI BEACH AIRPORT FLYER	1,212	1,277	-5.0%	1,574	-23.0%	1,134	6.9%
183	1,002	1,291	-22.4%	1,413	-29.1%	824	21.7%
200 - CUTLER BAY LOCAL	13	58	-77.5%	59	-77.8%	2	766.7%
202 - LITTLE HAITI CONN. (*)	42	109	-61.2%	39	8.3%	66	-36.4%
207 (7st) - LITTLE HAVANA CIRC	553	500	10.5%	796	-30.5%	449	23.2%
208 (8st) - LITTLE HAVANA CIRC	438	424	3.5%	911	-51.9%	366	19.7%
210 - SKYLAKE CIRC (*)	98	117	-16.4%	143	-31.5%	115	-14.8%
241 TUTTLE LIMITED	53					32	65.9%
246 - NIGHT OWL	32	68	-52.9%	87	-63.2%	27	17.6%
252 - CORAL REEF MAX	185	198	-6.3%	199	-6.9%	170	8.7%
301 DADE-MONROE EXPRESS(*)	636	850	-25.2%	751	-15.4%	694	-8.5%
302 CARD SOUND EXPRESS(*)	48	53	-9.9%	57	-15.8%	48	0.4%
338 - WEEKEND EXPRESS	172	106	62.3%	252	-31.7%	148	16.1%
500	10	59	-82.9%	83	-87.9%	9	6.4%
12/21 WEEKEND INTERL.	1,480	1,626	-9.0%	2,048	-27.7%	1,306	13.3%
Total	53,633	60,308	-11.1%	75,428	-28.9%	50,322	6.6%

METROBUS TOTAL MONTHLY BOARDINGS BY ROUTE

Route Monthly Total	Total Month	Total Month	Percent Change	Total Month	Percent Change	Total Month	Percent Change
	Feb-22	Feb-21	YOY	Feb-20	Current vs Feb-20	Jan-22	MOM
1 (*)	4,224	4,324	-2.3%	5,558	-24.0%	4,738	-10.8%
2	48,301	47,595	1.5%	75,463	-36.0%	47,408	1.9%
3	106,113	120,733	-12.1%	146,294	-27.5%	108,146	-1.9%
7	66,324	49,350	34.4%	86,077	-22.9%	64,777	2.4%
8	81,299	87,176	-6.7%	95,295	-14.7%	81,355	-0.1%
9	98,143	134,863	-27.2%	135,924	-27.8%	105,999	-7.4%
10	47,335	45,275	4.5%	64,874	-27.0%	45,942	3.0%
11	155,018	139,312	11.3%	187,425	-17.3%	156,004	-0.6%
12	38,714	41,575	-6.9%	55,585	-30.4%	36,358	6.5%
16	35,918	35,614	0.9%	49,061	-26.8%	37,934	-5.3%
17	66,583	70,956	-6.2%	96,715	-31.2%	68,798	-3.2%
19	17,208	22,066	-22.0%	30,847	-44.2%	17,229	-0.1%
21	25,000	33,360	-25.1%	36,341	-31.2%	24,688	1.3%
22	66,339	66,510	-0.3%	89,404	-25.8%	65,520	1.3%
24 - Coral Way Limited	36,827	35,549	3.6%	36,237	1.6%	35,897	2.6%
27	121,070	140,425	-13.8%	171,282	-29.3%	118,778	1.9%
29 (*)	8,839	7,552	17.0%	10,684	-17.3%	8,384	5.4%
31 - BUSWAY LOCAL	17,326	16,953	2.2%	29,125	-40.5%	17,634	-1.7%
32	40,766	35,951	13.4%	56,027	-27.2%	39,361	3.6%
33	27,731	26,034	6.5%	40,918	-32.2%	27,753	-0.1%
34 EXPRESS	19,772	16,730	18.2%	40,159	-50.8%	18,394	7.5%
35	37,946	44,116	-14.0%	59,041	-35.7%	37,335	1.6%
36	50,292	46,449	8.3%	61,606	-18.4%	49,978	0.6%
37	62,040	67,699	-8.4%	82,870	-25.1%	63,396	-2.1%
38	106,090	113,842	-6.8%	167,379	-36.6%	108,132	-1.9%
39 EXPRESS		4,656		17,853		2,793	
40	30,282	26,828	12.9%	40,497	-25.2%	30,330	-0.2%
42	16,759	17,847	-6.1%	20,825	-19.5%	16,391	2.2%
46 - LIBERTY CITY CONN. (*)	428	518	-17.4%	814	-47.4%	388	10.3%
51 - FLAGLER MAX	53,063	43,549	21.8%	62,186	-14.7%	52,926	0.3%
52	20,583	22,331	-7.8%	30,522	-32.6%	20,665	-0.4%
54	52,580	61,670	-14.7%	72,125	-27.1%	51,249	2.6%
55 MARLINS SHUTTLE							
56 (*)	5,389	3,867	39.4%	7,071	-23.8%	4,735	13.8%
57	5,514	5,699	-3.2%	8,665	-36.4%	5,407	2.0%
62	30,718	41,380	-25.8%	46,582	-34.1%	31,120	-1.3%
71 (*)	10,784	8,965	20.3%	16,118	-33.1%	10,437	3.3%
72 (*)	12,711	10,295	23.5%	18,433	-31.0%	12,537	1.4%

METROBUS TOTAL MONTHLY BOARDINGS BY ROUTE

Route Monthly Total	Total Month	Total Month	Percent Change	Total Month	Percent Change	Total Month	Percent Change
	Feb-22	Feb-21	YOY	Feb-20	Current vs Feb-20	Jan-22	MOM
73	44,293	38,278	15.7%	48,767	-9.2%	44,027	0.6%
75	19,098	24,172	-21.0%	31,994	-40.3%	19,757	-3.3%
77	143,089	151,767	-5.7%	174,833	-18.2%	149,990	-4.6%
79 STREET MAX	5,944			7,228	-17.8%	5,572	6.7%
82 - WESTCHESTER CIRC. (*)	751	749	0.3%	1,482	-49.3%	655	14.7%
87	28,814	25,881	11.3%	33,273	-13.4%	27,235	5.8%
88	41,093	42,047	-2.3%	54,772	-25.0%	41,020	0.2%
93 - BISCAYNE MAX	46,573	35,056	32.9%	66,684	-30.2%	45,541	2.3%
95 EXPRESS	14,470	7,937	82.3%	33,796	-57.2%	12,026	20.3%
99	28,968	30,250	-4.2%	36,325	-20.3%	29,573	-2.0%
101 - A (*)	4,090	2,724	50.1%	4,114	-0.6%	3,865	5.8%
102 - B	34,152	24,588	38.9%	42,683	-20.0%	32,950	3.6%
103 - C		8,633		11,682		3,918	
104	12,645	8,832	43.2%	20,351	-37.9%	13,172	-4.0%
105 - E	24,199	26,458	-8.5%	31,302	-22.7%	24,306	-0.4%
107 - G	32,296	29,032	11.2%	43,178	-25.2%	32,514	-0.7%
108 - H	9,829	11,013	-10.8%	12,624	-22.1%	10,140	-3.1%
110 - J	51,054	66,686	-23.4%	66,481	-23.2%	51,508	-0.9%
112 - L	151,662	181,971	-16.7%	200,268	-24.3%	163,487	-7.2%
113 - M	13,625	15,435	-11.7%	21,548	-36.8%	12,737	7.0%
115 (*)	3,506	4,491	-21.9%	4,334	-19.1%	3,944	-11.1%
119 - S	192,989	215,536	-10.5%	242,257	-20.3%	204,671	-5.7%
120 - BEACH MAX	128,648	119,122	8.0%	170,942	-24.7%	130,698	-1.6%
132 TRI-RAIL (DORAL)	155	432	-64.1%	312	-50.3%	69	124.6%
135 (*)	20,949	18,426	13.7%	32,067	-34.7%	21,764	-3.7%
136	2,454	1,249	96.5%	2,524	-2.8%	2,659	-7.7%
137 - WEST DADE CONN.	31,330	28,010	11.9%	41,167	-23.9%	29,568	6.0%
150 - MIAMI BEACH AIRPORT FLYER	37,391	33,037	13.2%	51,651	-27.6%	37,846	-1.2%
155 - BISCAYNE GARDENS CIRCULATOR (*)	590	585	0.9%	881	-33.0%	577	2.3%
175 - NW MIAMI-DADE EXPRESS				661			
183	55,984	62,068	-9.8%	77,570	-27.8%	56,279	-0.5%
195 EXPRESS - BROWARD BLVD				7,441			
196 EXPRESS - SHERIDAN ST				7,658			
200 - CUTLER BAY LOCAL	1,573	2,880	-45.4%	3,984	-60.5%	1,505	4.5%
202 - LITTLE HAITI CONN. (*)	2,727	3,219	-15.3%	3,200	-14.8%	2,744	-0.6%
204 KILLIAN KAT	8,366			21,418	-60.9%	7,384	13.3%

METROBUS TOTAL MONTHLY BOARDINGS BY ROUTE

Route Monthly Total	Total Month	Total Month	Percent Change	Total Month	Percent Change	Total Month	Percent Change
	Feb-22	Feb-21	YOY	Feb-20	Current vs Feb-20	Jan-22	MOM
207 (7st) - LITTLE HAVANA CIRC	27,463	21,031	30.6%	38,127	-28.0%	26,497	3.6%
208 (8st) - LITTLE HAVANA CIRC	24,188	19,656	23.1%	35,018	-30.9%	23,869	1.3%
210 - SKYLAKE CIRC (*)	6,314	7,593	-16.8%	7,033	-10.2%	7,422	-14.9%
211 - OVERTOWN CIRC. (*)	1,751	956	83.2%	1,159	51.1%	1,687	3.8%
212 - SWEETWATER CIRC. (*)	600	269	123.0%	295	103.4%	636	-5.7%
217 - BUNCHE PARK CIRC (*)	1,343	1,331	0.9%	1,949	-31.1%	1,381	-2.8%
238 EAST/WEST CONN.	7,645	6,546	16.8%	8,987	-14.9%	7,344	4.1%
241 TUTTLE LIMITED	1,880					1,574	19.4%
246 - NIGHT OWL	1,129	2,354	-52.0%	2,641	-57.3%	1,073	5.2%
248 - PRINCETON CIRCULATOR (*)	1,574	1,657	-5.0%	2,690	-41.5%	1,660	-5.2%
252 - CORAL REEF MAX	13,759	11,736	17.2%	19,325	-28.8%	13,387	2.8%
254 - BROWNSVILLE CIRC. (*)	159	418	-62.0%	384	-58.6%	166	-4.2%
267 - LUDLAM LIMITED (*)	2,361	2,310	2.2%	2,978	-20.7%	2,217	6.5%
272 SUNSET KAT (*)	5,984	5,173	15.7%	11,004	-45.6%	5,538	8.1%
277 - 7th AVENUE MAX	10,331	9,261	11.6%	13,669	-24.4%	9,161	12.8%
286 - NORTH POINTE CIRC. (*)	1,269	795	59.6%	2,145	-40.8%	526	141.3%
287 - SAGA BAY MAX	4,065	2,944	38.1%	7,160	-43.2%	3,616	12.4%
288 - KENDALL CRUISER	8,156			15,249	-46.5%	6,870	18.7%
295 EXPRESS - BROWARD BLVD - CIVIC CENTER				4,668			
296 EXPRESS - SHERIDAN ST - CIVIC CENTER				4,297			
297-27th AVENUE ORANGE MAX	16,697	17,760	-6.0%	27,125	-38.4%	16,461	1.4%
301 DADE-MONROE EXPRESS(*)	20,933	24,853	-15.8%	23,838	-12.2%	23,060	-9.2%
302 CARD SOUND EXPRESS(*)	1,754	2,147	-18.3%	2,236	-21.6%	1,769	-0.8%
338 - WEEKEND EXPRESS	1,259	1,143	10.1%	2,191	-42.5%	1,359	-7.4%
344 (*)	1,052	1,524	-31.0%	1,919	-45.2%	1,088	-3.3%
500	344	1,867	-81.6%	2,301	-85.0%	306	12.4%
836 EXPRESS	2,696					2,298	17.3%
12/21 WEEKEND INTERL.	13,378	15,094	-11.4%	20,830	-35.8%	15,034	-11.0%
GREEN HILLS SHUTTLE (*)	20	27	-25.9%	36	-44.4%	40	-50.0%
KINGS CREEK SHUTTLE (*)	44	30	46.7%	52	-15.4%	66	-33.3%
SIERRALAKES SHUTTLE (*)	65	76	-14.5%	180	-63.9%	66	-1.5%
ROBERT SHARP SHUTTLE (*)	76	88	-13.6%	38	100.0%	82	-7.3%
AHEPA SHUTTLE (*)	69	81	-14.8%	83	-16.9%	84	-17.9%
FEDERATION GARDENSSHUTTLE (*)	95	68	39.7%	142	-33.1%	101	-5.9%
Total	2,995,789	3,076,966	-2.6%	4,123,083	-27.3%	3,029,055	-1.1%

METROBUS HOLIDAY BOARDINGS BY ROUTE Presidents Day

ROUTES	Presidents Day 2021	Presidents Day 2022	Pct Delta	ROUTES	Presidents Day 2021	Presidents Day 2022	Pct Delta	ROUTES	Presidents Day 2021	Presidents Day 2022	Pct Delta
1	169	84	-50.3%	62	1,308	1,080	-17.4%	195			
2	1,585	1,592	0.4%	71	345	436	26.4%	196			
3	3,889	3,631	-6.6%	72	380	478	25.8%	200	98	100	2.0%
7	2,037	2,165	6.3%	73	1,561	1,766	13.1%	202	106	107	0.9%
8	3,185	2,554	-19.8%	75	802	623	-22.3%	204		319	
9	4,511	3,816	-15.4%	77	6,433	5,077	-21.1%	207		962	287.9%
10	1,369	1,387	1.3%	79		230		208	248	865	6.5%
11	4,429	5,527	24.8%	82	15	56	273.3%	210	812	336	-13.0%
12	2,284	1,313	-42.5%	87	854	1,161	35.9%	211	386	336	-13.0%
16	1,174	1,120	-4.6%	88				212	38	68	78.9%
17	2,346	2,012	-14.2%	93	1,401	1,395	-0.4%	217	9	25	177.8%
19	721	663	-8.0%	95	1,618	1,790	10.6%	218	46	53	15.2%
21	537	1,053	96.1%	99	218	368	68.8%	238	289	249	-13.8%
22	2,009	2,294	14.2%	101	699	1,099	57.2%	241		56	
24	1,294	1,337	3.3%	102	90	151	67.8%	246	96	33	-65.6%
27	5,049	4,173	-17.3%	103	621	1,253	101.8%	248	83	57	-31.3%
29	423	454	7.3%	104	362			252	350	539	54.0%
31	330	447	35.5%	105	358	373	4.2%	254	10	6	-40.0%
32	1,329	1,429	7.5%	107	1,091	924	-15.3%	267	66	82	24.2%
33	638	968	51.7%	108	996	1,173	17.8%	272	204	265	29.9%
34	767	647	-15.6%	110	507	364	-28.2%	277	227	348	53.3%
35	1,711	1,214	-29.0%	112	2,399	1,892	-21.1%	286	29	53	82.8%
36	1,279	1,573	23.0%	113	6,486	5,713	-11.9%	287	99	162	63.6%
37	2,826	2,135	-24.5%	115	499	423	-15.2%	288		333	
38	3,954	3,677	-7.0%	119	160	119	-25.6%	295			
39	121			120	7,400	7,268	-1.8%	296			
40	987	1,137	15.2%	132	4,370	4,759	8.9%	297	764	642	-16.0%
42	763	599	-21.5%	135	22			301	873	601	-31.2%
46	9	10	11.1%	136	725	811	11.9%	302	61	72	18.0%
51	1,619	2,043	26.2%	137	74	103	39.2%	344	83	63	-24.1%
52	742	597	-19.5%	150	1,007	1,054	4.7%	500	58	22	-62.1%
54	2,079	1,954	-6.0%	155	1,268	1,371	8.1%	836		41	
56	160	198	23.8%	175	31	13	-58.1%				
57	301	184	-38.9%	183	2,219	1,767	-20.4%				
								Total (1)	107,980	105,536	-2.3%

(1) Excludes Lifeline shuttles and some routes not run both years.

YEAR-OVER-YEAR BUS RIDERSHIP BY ROUTE SERVICE TYPE

Boardings by Service Type and Route	Average Weekday	Average Weekday	Percent Change	Average Saturday	Average Saturday	Percent Change	Average Sunday	Average Sunday	Percent Change	Total Monthly	Total Monthly	Percent Change
	Feb-22	Feb-21	22 vs 21	Feb-22	Feb-21	22 vs 21	Feb-22	Feb-21	22 vs 21	Feb-22	Feb-21	22 vs 21
Directly Operated Express Routes (1)												
34 EXPRESS	989	837	18.2%							19,772	16,730	18.2%
39 EXPRESS		233									4,656	
95-EXPRESS	724	397	82.3%							14,470	7,937	82.3%
150-MIAMI BEACH AIRPORT FLYER	1,358	1,145	18.5%	1,347	1,256	7.2%	1,212	1,277	-5.0%	37,391	33,037	13.2%
175 - NW MIAMI-DADE EXPRESS												
195 EXPRESS - BROWARD BLVD												
196 EXPRESS - SHERIDAN ST												
295 EXPRESS - BROWARD BLVD - CIVIC CENTER												
296 EXPRESS - SHERIDAN ST - CIVIC CENTER												
204 KAT-KILLIAN	418									8,366		
288 KENDALL CRUISER	408									8,156		
338 - WEEKEND EXPRESS				143	206	-30.8%	172	106	62.3%	1,259	1,143	10.1%
836 EXPRESS	135									2,696		
Subtotal Express Routes	4,031	2,612	54.3%	1,490	1,462	1.9%	1,384	1,383	0.1%	92,110	63,503	45.0%
Percentage of All Bus Routes	3.2%	2.1%		2.0%	1.8%		2.6%	2.3%		3.1%	2.1%	
Contracted Routes												
1	167	149	11.9%	111	181	-38.6%	111	155	-28.3%	4,224	4,324	-2.3%
29	442	378	17.0%							8,839	7,552	17.0%
35												
46 - LIBERTY CITY CONN.	21	26	-17.4%							428	518	-17.4%
56	269	193	39.4%							5,389	3,867	39.4%
71	481	382	26.1%	192	205	-6.2%	99	129	-23.1%	10,784	8,965	20.3%
72	526	418	26.0%	286	269	6.2%	262	217	20.7%	12,711	10,295	23.5%
82 - WESTCHESTER CIRC	30	29	2.7%	37	40	-8.8%				751	749	0.3%
101 - A	187	110	69.6%	60	58	4.3%	28	72	-61.2%	4,090	2,724	50.1%
115	141	172	-17.9%	95	135	-29.7%	77	130	-40.9%	3,506	4,491	-21.9%
155 - BISCAYNE GARDENS CIRC	30	29	0.9%							590	585	0.9%
202 - LITTLE HAITI CONN.	116	117	-1.4%	61	109	-43.9%	42	109	-61.2%	2,727	3,219	-15.3%
210 - SKYLAKE CIRC	266	327	-18.5%	149	148	0.5%	98	117	-16.4%	6,314	7,593	-16.8%
211-OVERTOWN CIRC	88	48	83.2%							1,751	956	83.2%
212-SWEETWATER CIRC	30	13	123.0%							600	269	123.0%
217 - BUNCHE PARK CIRC	67	67	0.9%							1,343	1,331	0.9%
248 - PRINCETON CIRCULATOR	79	83	-5.0%							1,574	1,657	-5.0%
254-BROWNSVILLE CIRC	8	21	-62.0%							159	418	-62.0%
286-NORTH POINTE CIRC	54	33	62.6%	50	34	45.3%				1,269	795	59.6%
344	53	76	-31.0%							1,052	1,524	-31.0%
Subtotal Contracted Reg. & Circ. Routes	3,054	2,670	14.4%	1,040	1,179	-11.7%	717	929	-22.8%	68,101	61,832	10.1%
Percentage of All Bus Routes	2.5%	2.1%		1.4%	1.4%		1.3%	1.5%		2.3%	2.0%	

(1) Several express routes were suspended beginning at the end of March 2020, due to the SARS-CoV-2 pandemic, while other routes had alignment and schedule modifications made to them, in an ongoing effort to optimize service delivery..

YEAR-OVER-YEAR BUS RIDERSHIP BY ROUTE SERVICE TYPE

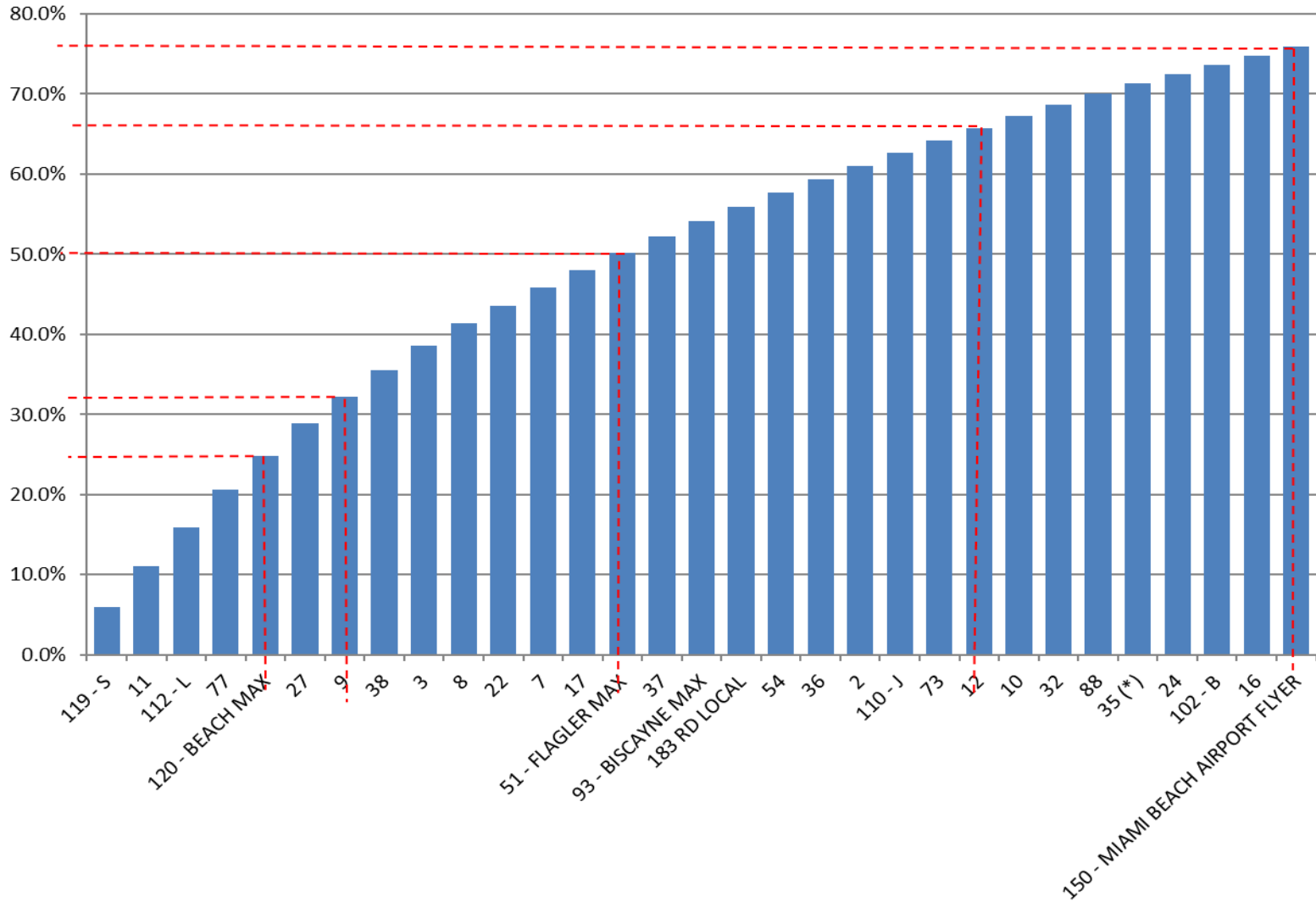
Boardings by Service Type and Route	Average Weekday	Average Weekday	Percent Change	Average Saturday	Average Saturday	Percent Change	Average Sunday	Average Sunday	Percent Change	Total Monthly	Total Monthly	Percent Change
	Feb-22	Feb-21	22 vs 21	Feb-22	Feb-21	22 vs 21	Feb-22	Feb-21	22 vs 21	Feb-22	Feb-21	22 vs 21
Contracted Express Routes												
272 SUNSET-KAT	299	259	15.7%							5,984	5,173	15.7%
301-DADE MONROE EXPRESS	771	890	-13.3%	742	915	-18.9%	636	850	-25.2%	20,933	24,853	-15.8%
302-CARD SOUND EXPRESS	70	79	-11.7%	42	89	-52.8%	48	53	-9.9%	1,754	2,147	-18.3%
Subtotal Contracted Express Routes	1,140	1,227	-7.1%	784	1,003	-21.9%	684	903	-24.3%	28,671	32,173	-10.9%
Percentage of All Bus Routes	0.9%	1.0%		1.0%	1.2%		1.3%	1.5%		1.0%	1.0%	
Limited Stop Routes												
24-CORAL WAY LIMITED	1,476	1,400	5.4%	1,052	1,084	-3.0%	777	803	-3.2%	36,827	35,549	3.6%
51-FLAGLER MAX	2,653	2,177	21.8%							53,063	43,549	21.8%
79 STREET MAX	297									5,944		
93 - BISCAYNE MAX	2,329	1,753	32.9%							46,573	35,056	32.9%
120 - BEACH MAX	5,237	4,760	10.0%	3,844	3,723	3.2%	2,134	2,259	-5.6%	128,648	119,122	8.0%
241 TUTTLE LIMITED												
252-CORAL REEF MAX	602	492	22.3%	244	275	-11.5%	185	198	-6.3%	13,759	11,736	17.2%
267-LUDLAM LIMITED (contracted)	118	116	2.2%							2,361	2,310	2.2%
277-7TH AVENUE MAX	517	463	11.6%							10,331	9,261	11.6%
287-SAGA BAY MAX	203	147	38.1%							4,065	2,944	38.1%
297-27th AVENUE ORANGE MAX	835	888	-6.0%							16,697	17,760	-6.0%
Subtotal Limited Stop Routes	14,267	12,196	17.0%	5,139	5,082	1.1%	3,095	3,259	-5.0%	318,268	277,287	14.8%
Percentage of All Bus Routes	11.5%	9.7%		6.9%	6.2%		5.8%	5.4%		10.6%	9.0%	
Directly Operated Free Routes												
132 -TRI-RAIL DORAL	12	22	-44.8%							155	432	-64.1%
200-CUTLER BAY LOCAL	77	126	-39.3%	34	108	-68.3%	13	58	-77.5%	1,573	2,880	-45.4%
Subtotal Free Directly Operated Routes	89	148	-40.1%	34	108	-68.3%	13	58	-77.5%	1,728	3,312	-47.8%
Percentage of All Bus Routes	0.0%	0.0%								0.0%	0.0%	
Shuttles												
55-MARLINS SHUTTLE												
Percentage of All Bus Routes												
Contractor-Operated Lifeline Routes												
GREEN HILLS SHUTTLE	5	7	-25.9%							20	27	-25.9%
KINGS CREEK SHUTTLE	11	8	46.7%							44	30	46.7%
SIERRA LAKES SHUTTLE	16	19	-14.5%							65	76	-14.5%
ROBERT SHARP SHUTTLE	19	22	-13.6%							76	88	-13.6%
AHEPA SHUTTLE	17	20	-14.8%							69	81	-14.8%
FEDERATION GARDENS SHUTTLE				24	17	39.7%				95	68	39.7%
Subtotal Contractor-Operated Lifeline Routes	69	76	-9.3%	24	17	39.7%				369	370	-0.3%
Percentage of All Bus Routes	0.1%	0.1%		0.0%	0.0%					0.0%	0.0%	
Other Circulator Route												
200-CUTLER BAY LOCAL	77	126	-39.3%	34	108	-68.3%	13	58	-77.5%	1,573	2,880	-45.4%
Percentage of All Bus Routes	0.1%	0.1%		0.0%	0.1%		0.0%	0.1%		0.1%	0.1%	
All Other (Regular) Routes	101,500	106,670	-4.8%	66,399	72,495	-8.4%	47,740	53,776	-11.2%	2,486,542	2,638,489	-5.8%
Percentage of All Bus Routes	81.8%	84.9%		88.6%	89.1%		89.0%	89.2%		83.0%	85.7%	
Total Bus System	124,148	125,599	-1.2%	74,909	81,346	-7.9%	53,633	60,308	-11.1%	2,995,789	3,076,966	-2.6%

Bus Routes as Ranked by Percentage of Average Weekday Ridership

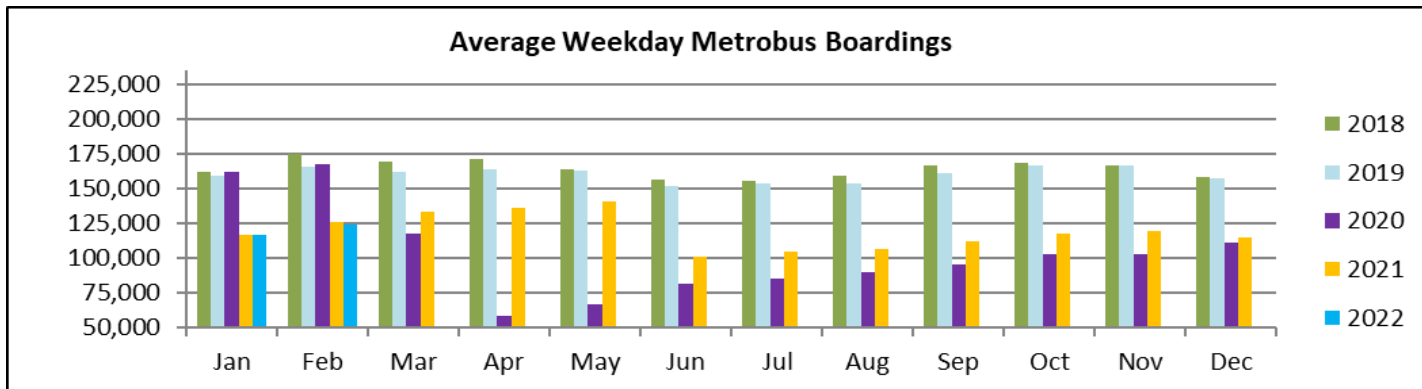
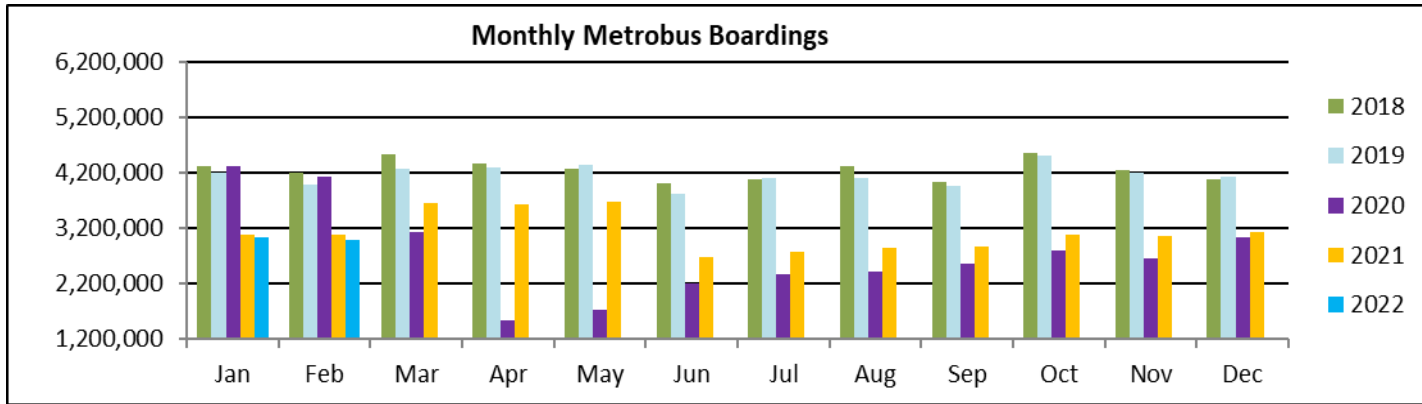
Rank	Route	Average Weekday	Percent Share	Cumul Pct Share	Rank	Route	Average Weekday	Percent Share	Cumul Pct Share	Rank	Route	Average Weekday	Percent Share	Cumul Pct Share	
1	119	7,434	6.0%	6.0%	36	21	1,250	1.0%	81.1%	71	1	167	0.1%	98.8%	
2	11	6,272	5.1%	11.0%	37	62	1,248	1.0%	82.1%	72	115	141	0.1%	98.9%	
3	112	6,012	4.8%	15.9%	38	99	1,185	1.0%	83.0%	73	836	135	0.1%	99.1%	
4	77	5,923	4.8%	20.7%	39	33	1,158	0.9%	84.0%	74	136	123	0.1%	99.2%	
5	120	5,237	4.2%	24.9%	40	207	1,102	0.9%	84.8%	75	267	118	0.1%	99.3%	
6	27	5,061	4.1%	28.9%	41	208	991	0.8%	85.6%	76	202	116	0.1%	99.3%	
7	9	4,084	3.3%	32.2%	42	34	989	0.8%	86.4%	77	211	88	0.1%	99.4%	
8	38	4,059	3.3%	35.5%	43	105	983	0.8%	87.2%	78	248	79	0.1%	99.5%	
9	3	3,869	3.1%	38.6%	44	135	935	0.8%	88.0%	79	200	77	0.1%	99.5%	
10	8	3,428	2.8%	41.4%	45	52	876	0.7%	88.7%	80	241	76	0.1%	99.6%	
11	22	2,755	2.2%	43.6%	46	75	864	0.7%	89.4%	81	302	70	0.1%	99.7%	
12	7	2,753	2.2%	45.8%	47	19	860	0.7%	90.1%	82	217	67	0.1%	99.7%	
13	17	2,716	2.2%	48.0%	48	297	835	0.7%	90.7%	83	286	54	0.0%	99.8%	
14	51	2,653	2.1%	50.1%	49	301	771	0.6%	91.4%	84	344	53	0.0%	99.8%	
15	37	2,552	2.1%	52.2%	50	95	724	0.6%	91.9%	85	246	40	0.0%	99.8%	
16	93	2,329	1.9%	54.1%	51	42	683	0.5%	92.5%	86	82	30	0.0%	99.9%	
17	183	2,308	1.9%	55.9%	52	31	666	0.5%	93.0%	87	212	30	0.0%	99.9%	
18	54	2,180	1.8%	57.7%	53	252	602	0.5%	93.5%	88	155	30	0.0%	99.9%	
19	36	2,099	1.7%	59.4%	54	113	552	0.4%	94.0%	89	46	21	0.0%	99.9%	
20	2	2,035	1.6%	61.0%	55	104	533	0.4%	94.4%	90	RS	19	0.0%	99.9%	
21	110	2,025	1.6%	62.7%	56	72	526	0.4%	94.8%	91	AS	17	0.0%	99.9%	
22	73	1,948	1.6%	64.2%	57	277	517	0.4%	95.2%	92	SL	16	0.0%	100.0%	
23	12	1,936	1.6%	65.8%	58	71	481	0.4%	95.6%	93	500	13	0.0%	100.0%	
24	10	1,865	1.5%	67.3%	59	29	442	0.4%	96.0%	94	132	12	0.0%	100.0%	
25	32	1,774	1.4%	68.7%	60	204	418	0.3%	96.3%	95	KC	11	0.0%	100.0%	
26	88	1,619	1.3%	70.0%	61	288	408	0.3%	96.6%	96	254	8	0.0%	100.0%	
27	35	1,563	1.3%	71.3%	62	238	382	0.3%	96.9%	97	GH	5	0.0%	100.0%	
28	24	1,476	1.2%	72.5%	63	108	375	0.3%	97.3%						
29	102	1,449	1.2%	73.6%	64	272	299	0.2%	97.5%						
30	16	1,413	1.1%	74.8%	65	79	297	0.2%	97.7%						
31	150	1,358	1.1%	75.9%	66	57	276	0.2%	98.0%						
32	40	1,338	1.1%	76.9%	67	56	269	0.2%	98.2%						
33	87	1,305	1.1%	78.0%	68	210	266	0.2%	98.4%						
34	107	1,291	1.0%	79.0%	69	287	203	0.2%	98.5%						
35	137	1,265	1.0%	80.1%	70	101	187	0.2%	98.7%						
												entirely contracted			
												Total Boardings	124,148	100.0%	100.0%

(1) Average weekday ridership rounded to the nearest unit.
(2) Includes the five Lifeline Shuttles that operate on weekdays: Ahepa, Green Hills, Kings Creek, Robert Sharp and Sierra Lakes.

Bus - Cumulative Percentage Average Weekday Ridership Share Top 1/4, 1/3, 1/2, 2/3 and 3/4 of Routes



TOTAL MONTHLY AND AVERAGE WEEKDAY RIDERSHIP YEAR OVER YEAR COMPARISON CHARTS – METROBUS

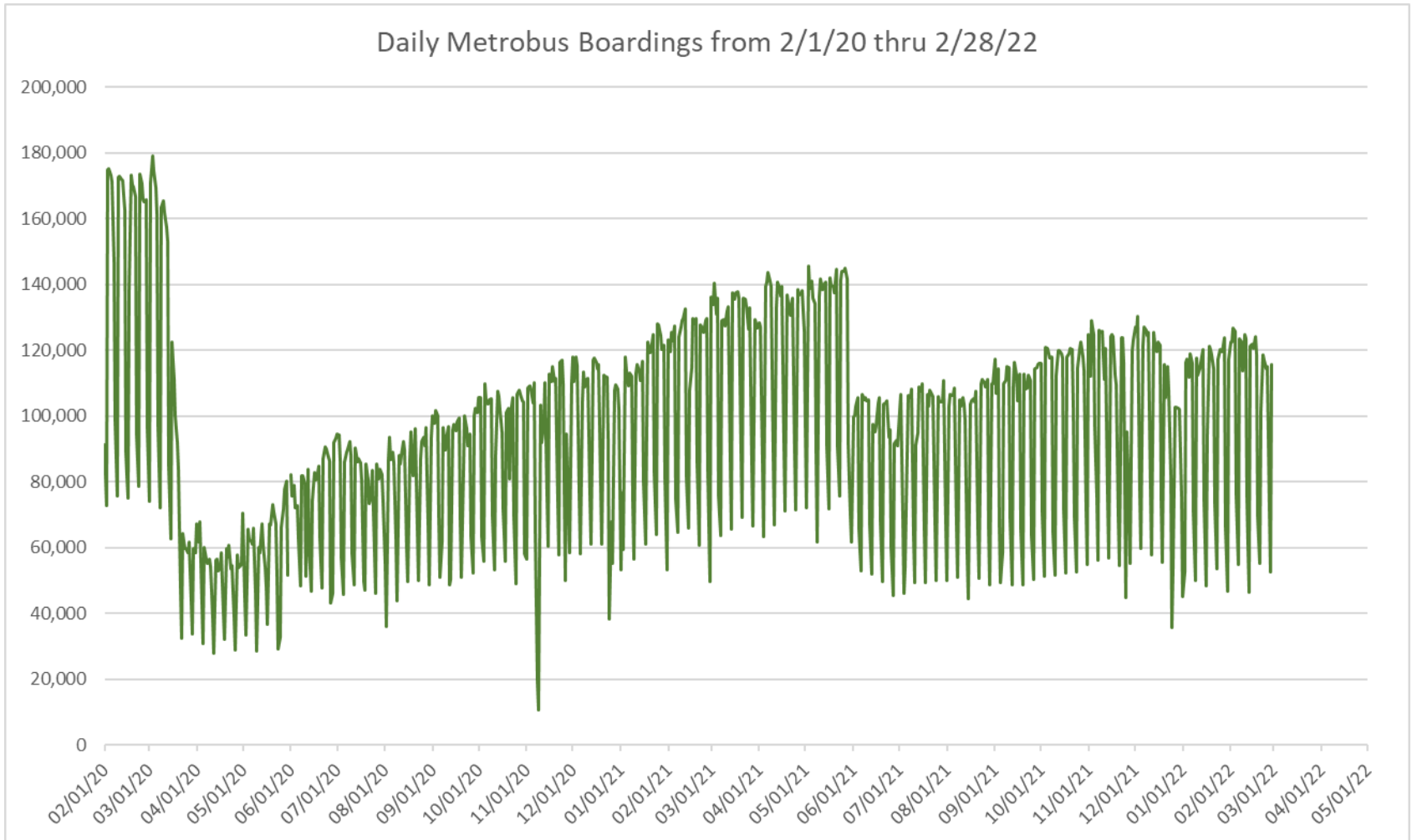


**“TOP 5 / BOTTOM 5” BUS ROUTES AVERAGE WEEKDAY RIDERSHIP PERFORMANCE
YEAR OVER YEAR COMPARISONS**

Route	Feb-22	Feb-21	Absolute Delta (1)	Percent Delta (2)
7	2,753	2,061	693	33.6%
93 - BISCAYNE MAX	2,329	1,753	576	32.9%
120 - BEACH MAX	5,237	4,760	477	10.0%
51 - FLAGLER MAX	2,653	2,177	476	21.8%
11	6,272	5,813	459	7.9%
9	4,084	5,621	-1,537	-27.3%
112 - L	6,012	7,280	-1,268	-17.4%
119 - S	7,434	8,229	-795	-9.7%
110 - J	2,025	2,701	-676	-25.0%
27	5,061	5,624	-563	-10.0%

- (1) Averages rounded to the nearest boarding, data as reported by NFS and/or APC system, depending on year; Lifelines excluded.
- (2) As a result of the SARS-CoV-2 pandemic, rides were fare-free beginning March 22, 2020; many bus routes continued reporting YOY gains February 2022, since February 2021 showed clear reduction effects on ridership from the SARS-CoV-2 pandemic. Fares were reinstated June 1, 2021, and ridership data from the farebox system rather than the automatic passenger counter system is utilized from that date going forward.

DAILY METROBUS RIDERSHIP SINCE FEBRUARY 1, 2020



- (1) National Emergency was declared on 3/13/20 as a result of the SARS-CoV-2 pandemic.
- (2) There was no Metrobus, Metrorail and Metromover service on 5/31/20, as a safety precaution.
- (3) The dip at the start of the second week of November 2020 is due to Hurricane Eta.
- (4) The reduction seen beginning 6/1/21 is partly due to the resumption of fares and partly the result of resuming reporting Cubic farebox data rather than bus APC counts.
- (5) Periodic (weekly) variations are prominent, since weekday ridership is almost always significantly higher than weekend or holiday ridership.

METROBUS PARKING PATRONAGE SUMMARY February 2022

PARK-RIDE LOT	ACTUAL AVAILABLE SPACES	ACTUAL OCCUPANCY	PERCENT OCCUPANCY
Transitway / SW 152nd St	200	127	64%
Transitway / SW 168th St (closed for construction January 2022)	149	0	0%
Transitway / SW 200th Street (effective February 2020)	100	38	38%
Transitway / SW 112 Ave (Target)	450	137	30%
Transitway / SW 244th St	95	37	39%
Transitway / SW 296th St	139	37	27%
Transitway / SW 344th St	248	133	54%
Coral Reef Drive 117/Turnpike	95	84	88%
Golden Glades - West Lot	2,150	276	13%
Hammocks Town Center (SW 152 Ave / SW 104 St)	50	7	14%
Kendall Dr./SW 127th Ave	161	15	9%
West Kendall Transit Term (Kendall Dr / SW162 Ave)	40	9	23%
NW 7th Avenue Transit Village (NW 7 Ave / NW 62 St)	25	24	96%
Miami Gardens Dr. / NW 73rd Ave	136	0	0%
Dolphin Station (effective Mar 2020)	348	50	14%
I-75 / Miami Gardens Dr (effective June 2019)	298	0	0%
TOTAL	4,684	974	21%

Note: some park-ride lots are joint-use and the number of park-ride vehicles may exceed the number of spaces allocated.

Metrorail



METRORAIL AVERAGE WEEKDAY BOARDINGS BY STATION (†)

Weekdays	Average Weekday	Average Weekday	Percent Change	Average Weekday	Percent Change	Average Weekday	Percent Change
STATIONS	Feb-22	Feb-21	YOY	Feb-20	Current vs Feb-20	Jan-22	MOM
ALLAPATTAH	1,270	1,245	2.0%	1,942	-34.6%	1,172	8.3%
BRICKELL	3,972	3,974	-0.1%	6,529	-39.2%	3,433	15.7%
BROWNSVILLE	597	707	-15.5%	862	-30.7%	555	7.5%
CIVIC CENTER	3,266	2,797	16.8%	6,143	-46.8%	2,840	15.0%
COCONUT GROVE	1,212	1,020	18.8%	1,795	-32.5%	1,087	11.5%
CULMER	876	904	-3.1%	1,392	-37.1%	816	7.4%
DADELAND NORTH	3,123	3,312	-5.7%	5,926	-47.3%	2,709	15.3%
DADELAND SOUTH	3,502	3,179	10.2%	7,150	-51.0%	3,149	11.2%
DOUGLAS ROAD	2,439	1,434	70.1%	3,624	-32.7%	2,135	14.2%
DR. MARTIN LUTHER KING, JR.	755	806	-6.3%	1,157	-34.7%	693	9.0%
EARLINGTON HEIGHTS	1,051	1,019	3.1%	1,662	-36.7%	965	9.0%
GOVERNMENT CENTER	5,218	3,517	48.3%	10,557	-50.6%	4,678	11.5%
HIALEAH	903	721	25.2%	1,253	-27.9%	824	9.5%
MIAMI INTERNATIONAL AIRPORT	998	712	40.1%	1,711	-41.7%	901	10.7%
NORTHSIDE	1,027	1,104	-7.0%	1,476	-30.4%	959	7.1%
OKEECHOBEE	685	690	-0.7%	1,164	-41.2%	611	12.0%
OVERTOWN / ARENA	1,143	782	46.3%	2,274	-49.7%	962	18.9%
PALMETTO	952	819	16.2%	1,543	-38.3%	839	13.4%
SANTA CLARA	485	521	-6.9%	812	-40.3%	474	2.4%
SOUTH MIAMI	1,647	1,140	44.4%	3,015	-45.4%	1,456	13.1%
TRI-RAIL	841	794	6.0%	1,207	-30.3%	736	14.2%
UNIVERSITY	1,570	849	85.0%	2,784	-43.6%	862	82.1%
VIZCAYA	923	761	21.2%	1,390	-33.6%	823	12.1%
TOTAL	38,454	32,807	17.2%	67,367	-42.9%	33,678	14.2%

(†) In this table and those which follow, "YOY" stands for "year-over-year", "MOM" for "month-over-month" and "YO2Y" for "year over two years", i.e., current month vs 12 months prior, one month prior and 24 months prior, respectively.

(*) Due to effects from the SARS-CoV-2 pandemic; rides were fare-free beginning March 22, 2020; fares were reinstated on June 1, 2021, in part accounting for the drop in ridership from May 2021.

METRORAIL AVERAGE SATURDAY BOARDINGS BY STATION

Saturdays	Average Saturday	Average Saturday	Percent Change	Average Saturday	Percent Change	Average Saturday	Percent Change
STATIONS	Feb-22	Feb-21	YOY	Feb-20	Current vs Feb-20	Jan-22	MOM
ALLAPATTAH	783	821	-4.7%	1,051	-25.5%	660	18.7%
BRICKELL	2,266	2,558	-11.4%	2,811	-19.4%	1,779	27.4%
BROWNSVILLE	382	517	-26.2%	520	-26.6%	350	9.1%
CIVIC CENTER	618	692	-10.7%	959	-35.6%	512	20.7%
COCONUT GROVE	753	685	10.0%	928	-18.8%	582	29.4%
CULMER	461	588	-21.5%	721	-36.0%	373	23.6%
DADELAND NORTH	1,371	1,786	-23.2%	1,994	-31.2%	1,015	35.1%
DADELAND SOUTH	1,688	1,991	-15.2%	2,625	-35.7%	1,358	24.3%
DOUGLAS ROAD	1,176	722	62.9%	1,319	-10.8%	891	32.0%
DR. MARTIN LUTHER KING, JR.	426	543	-21.5%	625	-31.9%	388	9.8%
EARLINGTON HEIGHTS	657	684	-4.0%	935	-29.8%	553	18.7%
GOVERNMENT CENTER	2,659	1,970	35.0%	4,262	-37.6%	2,122	25.3%
HIALEAH	469	448	4.7%	583	-19.6%	370	26.7%
MIAMI INTERNATIONAL AIRPORT	828	662	25.1%	1,330	-37.8%	720	15.0%
NORTHSIDE	672	858	-21.6%	878	-23.5%	582	15.4%
OKEECHOBEE	328	336	-2.4%	408	-19.7%	242	35.4%
OVERTOWN / ARENA	500	442	13.2%	678	-26.3%	407	22.9%
PALMETTO	337	351	-3.9%	458	-26.4%	264	27.7%
SANTA CLARA	276	321	-14.0%	422	-34.7%	236	16.9%
SOUTH MIAMI	816	673	21.4%	1,256	-35.0%	691	18.1%
TRI-RAIL	387	469	-17.5%	614	-37.0%	312	24.3%
UNIVERSITY	612	438	39.7%	714	-14.3%	377	62.1%
VIZCAYA	494	457	8.2%	622	-20.6%	372	32.9%
TOTAL	18,958	19,008	-0.3%	26,714	-29.0%	15,155	25.1%

METRORAIL AVERAGE SUNDAY BOARDINGS BY STATION

Sundays	Average Sunday	Average Sunday	Percent Change	Average Sunday	Percent Change	Average Sunday	Percent Change
STATIONS	Feb-22	Feb-21	YOY	Feb-20	Current vs Feb-20	Jan-22	MOM
ALLAPATTAH	560	639	-12.4%	791	-29.2%	488	14.7%
BRICKELL	1,780	2,014	-11.6%	2,379	-25.2%	1,485	19.8%
BROWNSVILLE	259	413	-37.3%	406	-36.3%	238	8.6%
CIVIC CENTER	487	579	-15.9%	791	-38.5%	396	23.0%
COCONUT GROVE	597	516	15.6%	838	-28.8%	450	32.7%
CULMER	350	496	-29.5%	616	-43.3%	321	8.9%
DADELAND NORTH	1,044	1,329	-21.4%	1,685	-38.0%	820	27.3%
DADELAND SOUTH	1,278	1,559	-18.0%	2,210	-42.2%	1,108	15.3%
DOUGLAS ROAD	847	451	87.9%	1,090	-22.3%	660	28.2%
DR. MARTIN LUTHER KING, JR.	328	441	-25.7%	506	-35.3%	285	14.9%
EARLINGTON HEIGHTS	484	542	-10.7%	799	-39.4%	419	15.6%
GOVERNMENT CENTER	2,338	1,624	44.0%	4,044	-42.2%	1,719	36.0%
HIALEAH	335	323	4.0%	472	-28.9%	292	14.9%
MIAMI INTERNATIONAL AIRPORT	794	625	27.1%	1,343	-40.8%	750	5.9%
NORTHSIDE	495	679	-27.1%	653	-24.1%	424	16.6%
OKEECHOBEE	161	231	-30.2%	273	-41.1%	142	13.5%
OVERTOWN / ARENA	445	394	12.9%	544	-18.3%	338	31.4%
PALMETTO	236	208	13.4%	336	-30.0%	183	29.0%
SANTA CLARA	180	232	-22.5%	280	-35.6%	155	16.3%
SOUTH MIAMI	633	545	16.0%	987	-35.9%	547	15.5%
TRI-RAIL	314	367	-14.3%	528	-40.5%	299	5.0%
UNIVERSITY	434	331	31.1%	608	-28.6%	261	66.3%
VIZCAYA	383	352	8.7%	524	-26.9%	292	31.3%
TOTAL	14,758	14,887	-0.9%	22,701	-35.0%	12,072	22.2%

METRORAIL TOTAL MONTHLY BOARDINGS BY STATION

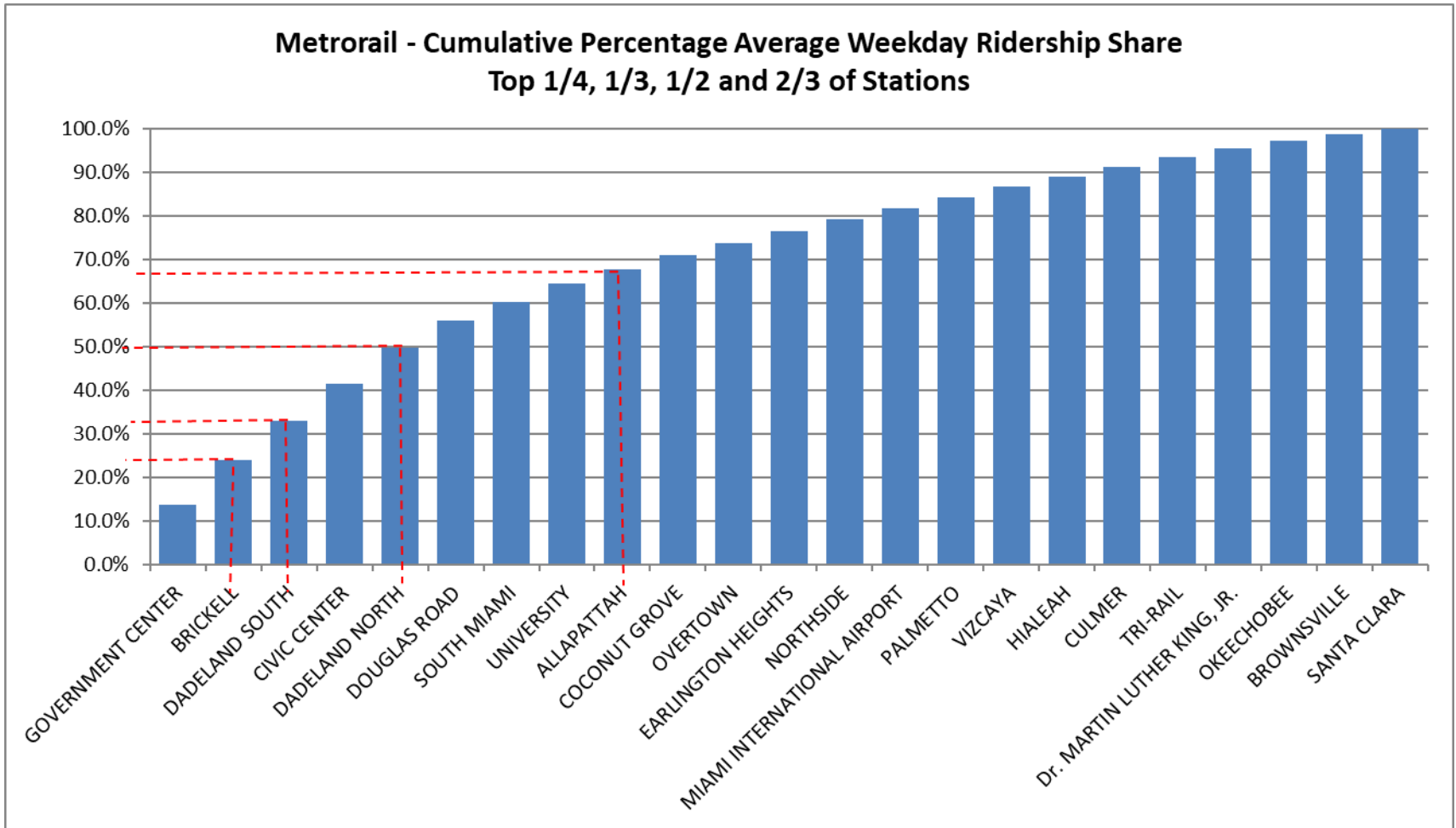
Monthly Totals	Total Month	Total Month	Percent Change	Total Month	Percent Change	Total Month	Percent Change
STATIONS	Feb-22	Feb-21	YOY	Feb-20	Current vs Feb-20	Jan-22	MOM
ALLAPATTAH	30,871	28,409	8.7%	46,868	-34.1%	30,134	2.4%
BRICKELL	95,769	90,514	5.8%	152,259	-37.1%	87,697	9.2%
BROWNSVILLE	14,497	16,514	-12.2%	21,285	-31.9%	14,643	-1.0%
CIVIC CENTER	69,782	55,925	24.8%	128,921	-45.9%	62,272	12.1%
COCONUT GROVE	29,655	23,307	27.2%	43,580	-32.0%	27,806	6.6%
CULMER	20,824	20,702	0.6%	33,497	-37.8%	20,324	2.5%
DADELAND NORTH	72,385	72,434	-0.1%	132,894	-45.5%	64,955	11.4%
DADELAND SOUTH	81,960	71,906	14.0%	162,416	-49.5%	77,393	5.9%
DOUGLAS ROAD	56,905	30,720	85.2%	82,141	-30.7%	51,924	9.6%
DR. MARTIN LUTHER KING, JR.	18,092	18,561	-2.5%	27,980	-35.3%	17,801	1.6%
EARLINGTON HEIGHTS	25,593	23,391	9.4%	40,697	-37.1%	24,925	2.7%
GOVERNMENT CENTER	124,465	78,039	59.5%	243,414	-48.9%	115,783	7.5%
HIALEAH	21,326	16,159	32.0%	29,516	-27.7%	20,409	4.5%
MIAMI INTERNATIONAL AIRPORT	26,447	18,131	45.9%	46,115	-42.6%	26,307	0.5%
NORTHSIDE	25,261	26,183	-3.5%	36,127	-30.1%	24,975	1.1%
OKEECHOBEE	15,638	14,763	5.9%	26,026	-39.9%	14,544	7.5%
OVERTOWN / ARENA	26,745	17,508	52.8%	49,911	-46.4%	23,563	13.5%
PALMETTO	21,382	17,122	24.9%	33,944	-37.0%	19,611	9.0%
SANTA CLARA	11,558	11,641	-0.7%	19,245	-39.9%	11,799	-2.0%
SOUTH MIAMI	38,765	25,570	51.6%	69,412	-44.2%	36,304	6.8%
TRI-RAIL	19,584	17,775	10.2%	29,120	-32.7%	18,423	6.3%
UNIVERSITY	35,654	18,530	92.4%	61,253	-41.8%	20,999	69.8%
VIZCAYA	22,004	16,988	29.5%	32,497	-32.3%	20,333	8.2%
TOTAL	905,162	730,792	23.9%	1,549,118	-41.6%	832,924	8.7%

METRORAIL HOLIDAY BOARDINGS BY STATION

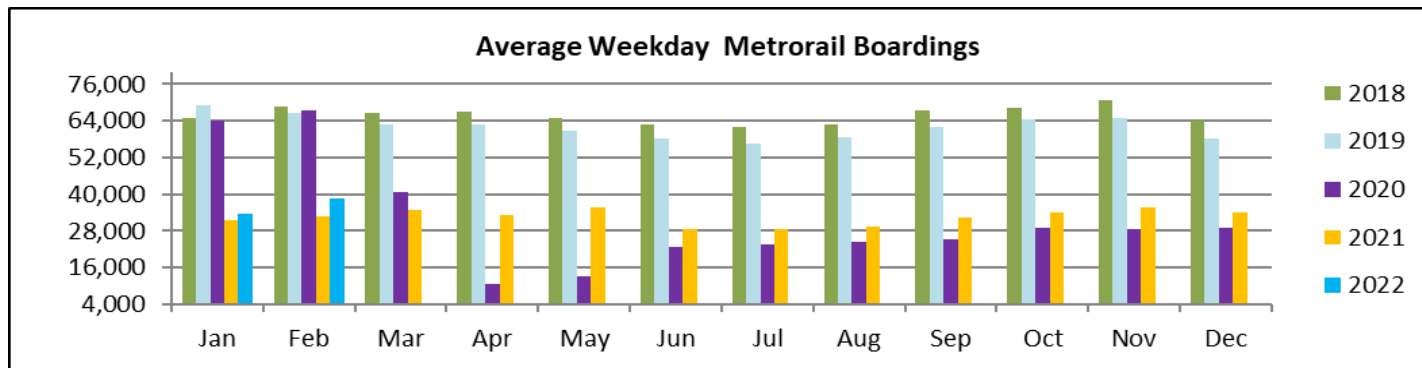
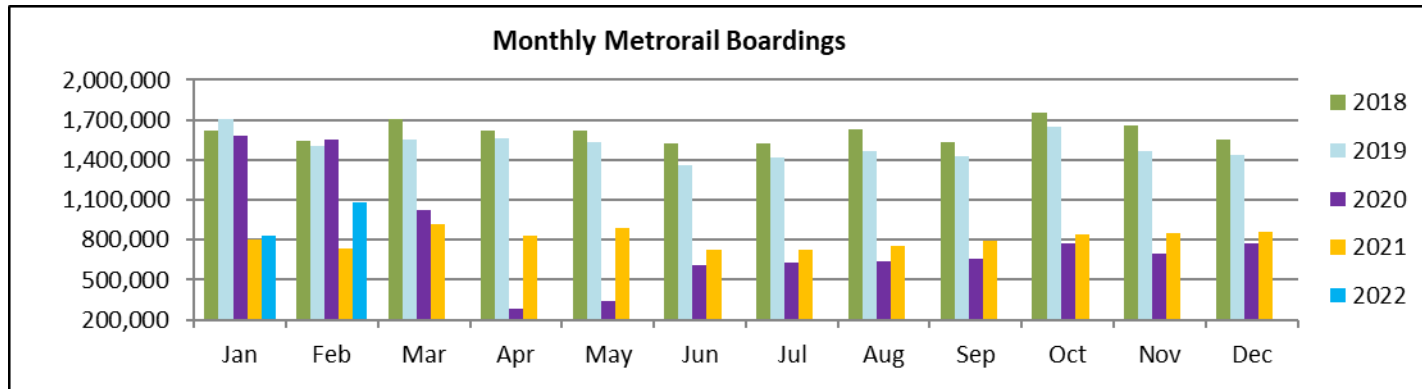
	Presidents Day	Presidents Day	Percent Change
STATIONS	2021 (*)	2022	21 vs 20
ALLAPATTAH		1,372	
BRICKELL		4,112	
BROWNSVILLE		594	
CIVIC CENTER		3,307	
COCONUT GROVE		1,225	
CULMER		937	
DADELAND NORTH		3,393	
DADELAND SOUTH		3,551	
DOUGLAS ROAD		2,471	
DR. MARTIN LUTHER KING, JR.		733	
EARLINGTON HEIGHTS		1,056	
GOVERNMENT CENTER		5,339	
HIALEAH		959	
MIAMI INTERNATIONAL AIRPORT		998	
NORTHSIDE		1,085	
OKEECHOBEE		677	
OVERTOWN / ARENA		1,242	
PALMETTO		1,010	
SANTA CLARA		526	
SOUTH MIAMI		1,676	
TRI-RAIL		800	
UNIVERSITY		1,636	
VIZCAYA		969	
TOTAL		39,668	

(*) There were no Metrorail boardings recorded by the Unleash Live AI system on Presidents Day 2021.

METRORAIL CUMULATIVE PERCENTAGE RIDERSHIP SHARE



TOTAL MONTHLY AND AVERAGE WEEKDAY RIDERSHIP YEAR OVER YEAR COMPARISON CHARTS – METRORAIL

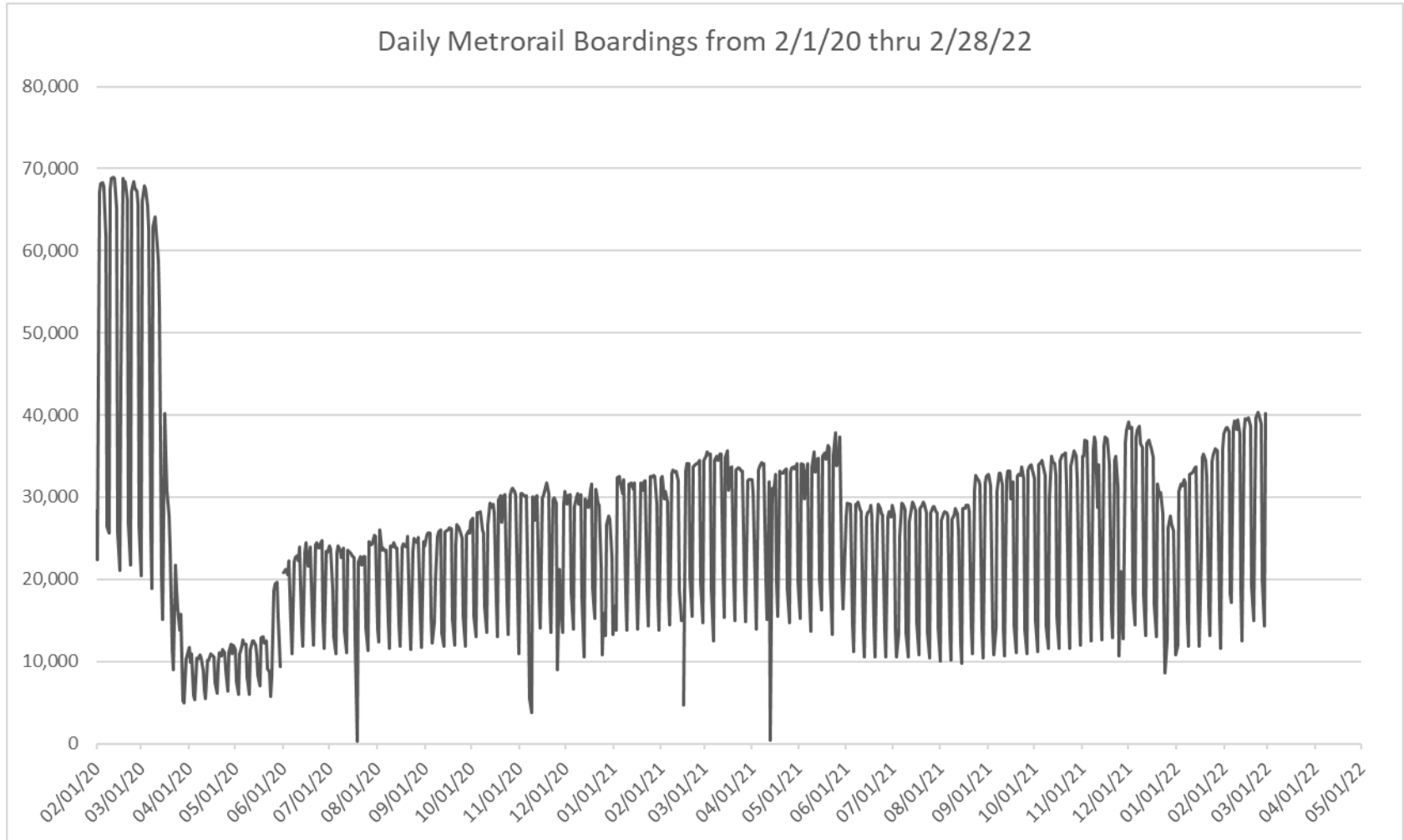


**“TOP 5 / BOTTOM 5” RAIL STATIONS AVERAGE WEEKDAY RIDERSHIP PERFORMANCE
YEAR OVER YEAR COMPARISONS**

Station	Feb-22	Feb-21	Absolute Delta (1)	Percent Delta
GOVERNMENT CENTER	5,218	3,517	1,700	48.3%
DOUGLAS ROAD	2,439	1,434	1,005	70.1%
UNIVERSITY	1,570	849	722	85.0%
SOUTH MIAMI	1,647	1,140	507	44.4%
CIVIC CENTER	3,266	2,797	469	16.8%
DADELAND NORTH	3,123	3,312	-190	-5.7%
BROWNSVILLE	597	707	-110	-15.5%
NORTHSIDE	1,027	1,104	-77	-7.0%
Dr. MARTIN LUTHER KING, JR.	755	806	-51	-6.3%
SANTA CLARA	485	521	-36	-6.9%

- (1) Averages rounded to the nearest boarding.
(2) As a result of the SARS-CoV-2 pandemic, rides were fare-free beginning March 22, 2020; many rail stations continued reporting YOY gains in February 2022, since February 2021 showed clear reduction effects on ridership from the SARS-CoV-2 pandemic. Fares were reinstated June 1, 2021, and ridership data from the faregate system rather than the video camera counter system is utilized from that date going forward.

DAILY METRORAIL RIDERSHIP SINCE FEBRUARY 1, 2020



- (1) National Emergency was declared on 3/13/20 as a result of the SARS-CoV-2 pandemic.
- (2) There was no Metrobus, Metrorail and Metromover service on 5/31/20, as a safety precaution.
- (3) The dip at the start of the second week of November 2020 is due to Hurricane Eta; these are *raw data* from the Unleash Live contractor AI video system.
- (4) The dip on 4/13/21 is due to a loss of connectivity at all stations, affecting a few stations over the next two days as well.
- (5) The reduction seen beginning 6/1/21 is partly due to the resumption of fares and partly the result of resuming reporting Cubi faregate data rather than video camera counts.
- (6) Periodic (weekly) variations are prominent, since weekday ridership is almost always significantly higher than weekend or holiday ridership.

METRORAIL PARKING PATRONAGE SUMMARY February 2022

PARK-RIDE LOT	ACTUAL CAPACITY (1)	ACTUAL OCCUPANCY (2)	PERCENT OCCUPANCY
DADELAND SOUTH	1,260	524	42%
DADELAND NORTH	1,963	817	42%
SOUTH MIAMI	837	211	25%
UNIVERSITY	230	118	51%
DOUGLAS ROAD	190	187	98%
COCONUT GROVE	100	0	0%
VIZCAYA	120	32	26%
CULMER	40	9	22%
SANTA CLARA	61	34	56%
ALLAPATTAH	74	3	4%
EARLINGTON HEIGHTS	361	126	35%
BROWNSVILLE	100	55	55%
DR. MARTIN LUTHER KING JR. (MDT)	62	0	0%
DR. MARTIN LUTHER KING JR. (GARAGE)	631	0	0%
NORTHSIDE	100	55	55%
HIALEAH	338	27	8%
OKEECHOBEE	1,256	131	10%
PALMETTO	700	125	18%
TOTAL	8,423	2,452	29%

- (1) Number of spaces could vary each week; shown are available spaces during final week of month, as submitted by DTPW Safety & Security office.
(2) All sampled occupancy data provided by DTPW Safety & Security office; calculations are corrections to those submitted by that entity.
(3) Daily averages rounded to nearest unit, with fewer counts at some stations due to shortage of DTPW Safety & Security office staff; calculations are based on sampled counted days only per raw data submitted, with resulting average daily occupancy shown.
(*) Closed throughout the month, per the DTPW Safety & Security office.

Metromover



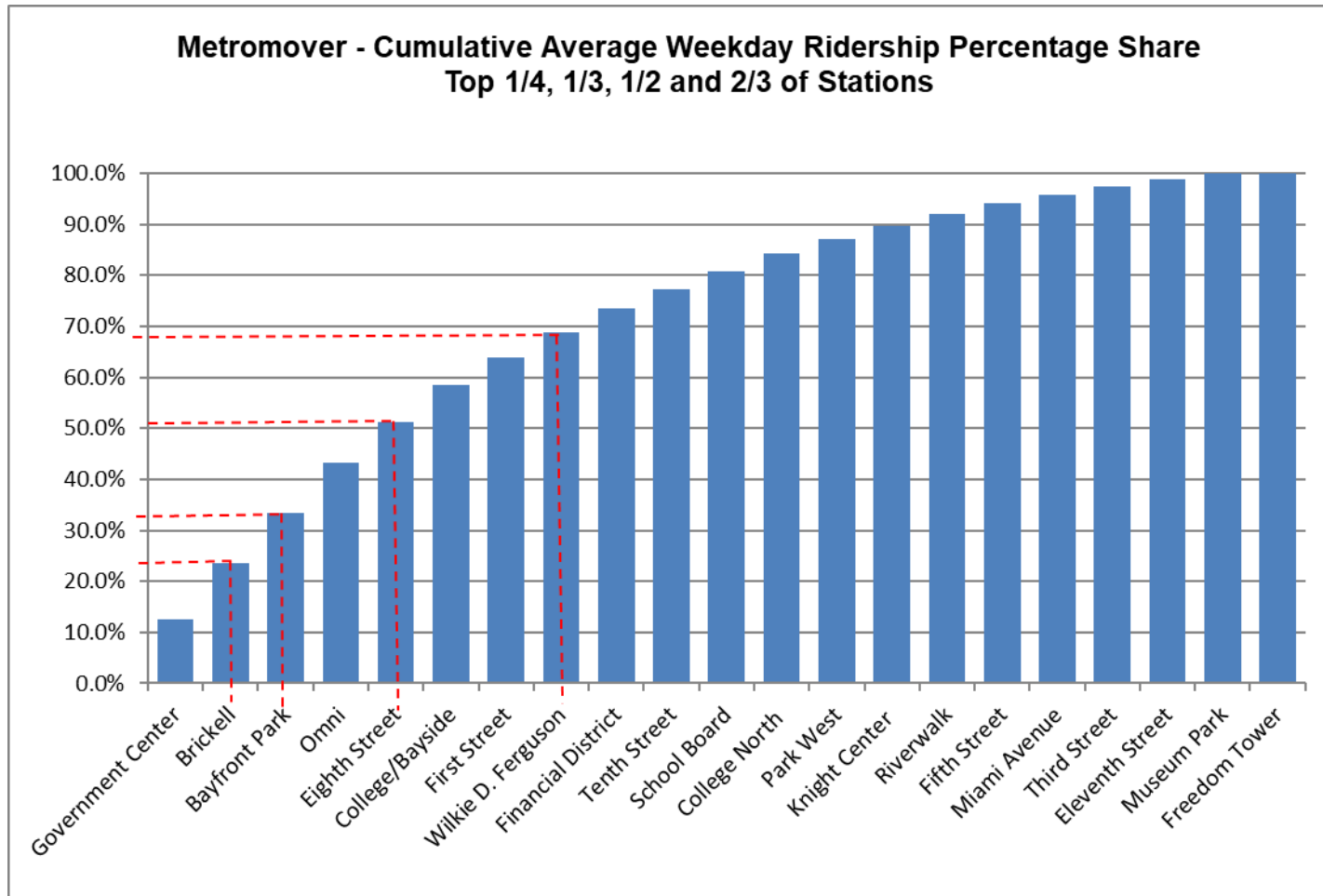
METROMOVER MONTHLY AND AVERAGE DAILY BOARDINGS BY STATION

	Average Weekday	Average Weekday	Percent Change	Average Saturday	Average Saturday	Percent Change	Average Sunday	Average Sunday	Percent Change	Presidents Day	Presidents Day	Percent Change	Total Monthly	Total Monthly	Percent Change
STATIONS	Feb-22	Feb-21	22 vs 21	Feb-22	Feb-21	22 vs 21	Feb-22	Feb-21	22 vs 21	Feb-22	Feb-21	22 vs 21	Feb-22	Feb-21	22 vs 21
School Board	631	475	32.7%	540	436	23.8%	476	359	32.8%	645	451	43.0%	16,693	12,659	31.9%
Omni	1,726	772	123.5%	1,663	750	121.7%	1,433	653	119.4%	1,526	725	110.5%	46,698	21,009	122.3%
Museum Park	207	112	85.0%	345	199	73.5%	316	182	73.4%	344	119	189.1%	6,923	3,053	126.8%
Eleventh Street	260	215	21.1%	233	139	67.3%	169	110	54.2%	204	232	-12.1%	6,761	5,313	27.3%
Park West	478	265	79.9%	487	210	131.5%	416	168	147.7%	358	312	14.7%	13,041	6,868	89.9%
Freedom Tower (1)															
Government Center	2,173	1,299	67.3%	1,669	1,000	67.0%	1,639	856	91.5%	1,732	1,075	61.1%	56,258	30,580	84.0%
Miami Avenue	291	246	18.2%	231	188	22.6%	241	156	54.0%	264	217	21.7%	7,684	5,933	29.5%
Third Street	276	182	51.5%	246	127	93.3%	224	132	70.0%	242	180	34.4%	7,359	3,246	126.7%
Knight Center	439	289	51.9%	365	202	81.0%	317	153	107.7%	289	286	1.0%	11,353	7,191	57.9%
Bayfront Park	1,736	967	79.4%	1,515	913	65.9%	2,121	858	147.1%	1,554	1,083	43.5%	49,069	26,549	84.8%
First Street	943	750	25.8%	879	589	49.3%	895	563	59.0%	768	602	27.6%	25,780	17,552	46.9%
College/Bayside	1,252	706	77.2%	1,130	694	62.9%	996	578	72.2%	928	700	32.6%	33,223	17,939	85.2%
College North	614	270	127.9%	439	149	194.0%	348	128	172.2%	443	164	170.1%	15,259	6,393	138.7%
Wilkie D. Ferguson	863	392	120.3%	714	322	122.2%	657	265	148.5%	673	353	90.7%	22,553	10,138	122.5%
Riverwalk	409	314	30.1%	386	242	59.9%	303	230	32.0%	271	328	-17.4%	10,795	8,182	31.9%
Fifth Street	360	235	52.9%	254	194	30.8%	275	182	51.4%	238	214	11.2%	9,195	6,191	48.5%
Eighth Street	1,404	617	127.4%	1,429	775	84.4%	1,210	637	89.8%	1,197	734	63.1%	38,430	16,702	130.1%
Tenth Street	658	391	68.3%	585	298	96.3%	522	256	104.3%	525	321	63.6%	17,449	9,961	75.2%
Brickell	1,917	1,337	43.3%	1,679	1,289	30.2%	1,548	1,076	43.9%	1,629	1,206	35.1%	50,952	33,711	51.1%
Financial District	812	468	73.6%	534	339	57.6%	567	281	101.7%	658	411	60.1%	20,493	11,162	83.6%
TOTAL	17,448	10,304	69.3%	15,322	9,054	69.2%	14,671	7,820	87.6%	14,488	9,713	49.2%	465,968	260,332	79.0%

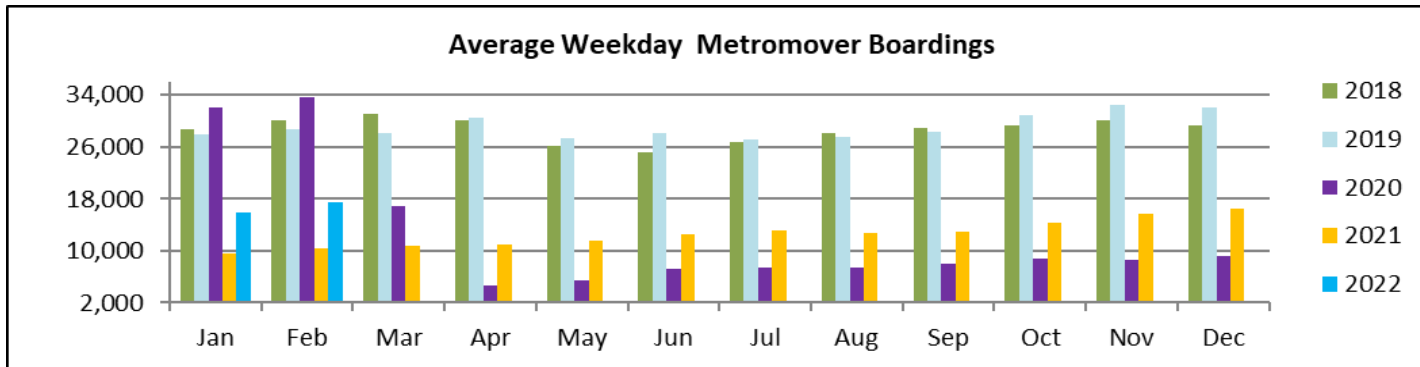
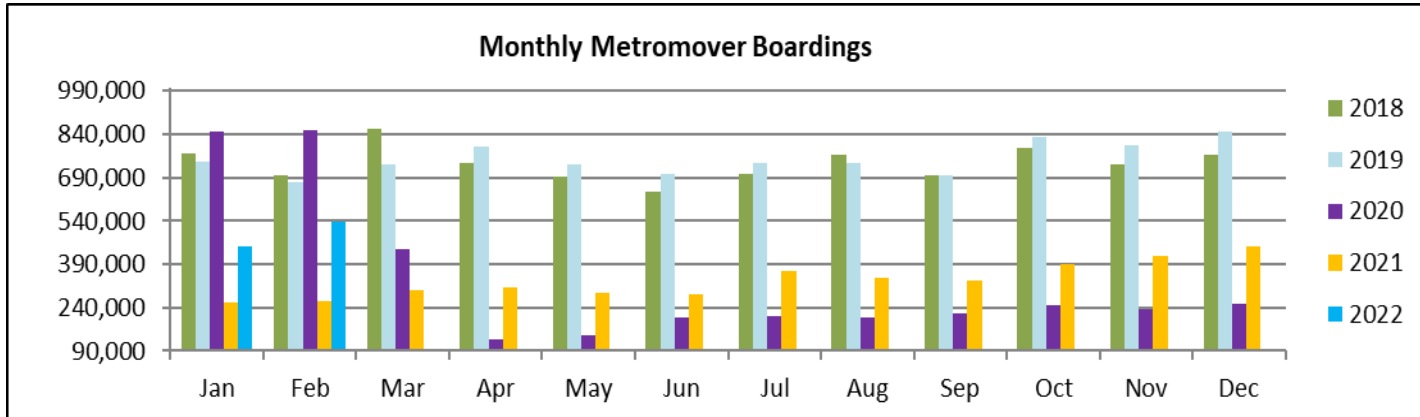
(1) Freedom Tower Station was closed for construction.

(*) APC system did not report boardings data at several stations on several days in February 2022; the average daily ridership calculations take this into account.

METROMOVER CUMULATIVE PERCENTAGE RIDERSHIP SHARE



TOTAL MONTHLY AND AVERAGE WEEKDAY RIDERSHIP YEAR OVER YEAR COMPARISON CHARTS – METROMOVER



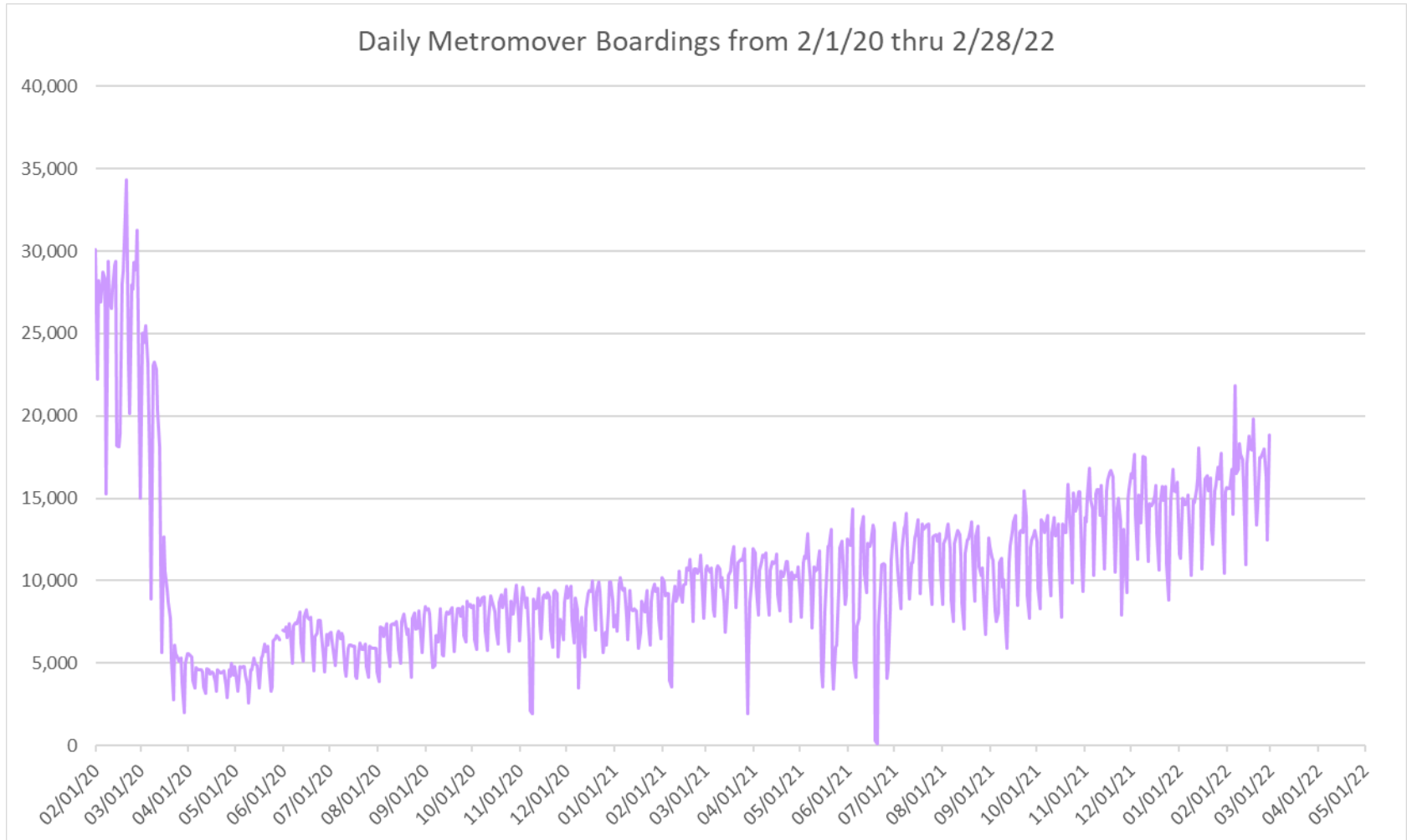
**“TOP 5 / BOTTOM 5” MOVER STATIONS AVERAGE WEEKDAY RIDERSHIP PERFORMANCE
YEAR OVER YEAR COMPARISONS**

Station	Feb-22	Feb-21	Absolute Delta (1)	Percent Delta
Omni	1,726	772	954	123.5%
Government Center	2,173	1,299	874	67.3%
Eighth Street	1,404	617	787	127.4%
Bayfront Park	1,736	967	768	79.4%
Brickell	1,917	1,337	579	43.3%
Museum Park	207	112	95	85.0%
Riverwalk	409	314	95	30.1%
Third Street	276	182	94	51.5%
Eleventh Street	260	215	45	21.1%
Miami Avenue	291	246	45	18.2%

(1) Averages rounded to the nearest boarding.

(†) Nearly all Metromover stations reporting YOY gains in February 2022, as February 2021 showed clear reduction effects on ridership from the SARS-CoV-2 pandemic.

DAILY METROMOVER RIDERSHIP SINCE FEBRUARY 1, 2020



- (1) National Emergency was declared on 3/13/20 as a result of the SARS-CoV-2 pandemic.
- (2) There was no Metrobus, Metrorail and Metromoverservice on 5/31/20, as a safety precaution.
- (3) The dip at the start of the second week of November 2020 is due to Hurricane Eta; these are *raw data* from the UTA contractor APC system. Other more recent dips are due to various station closures (mostly on weekends) for system maintenance purposes.
- (4) Periodic (weekly) variations are prominent, since weekday ridership is almost always significantly higher than weekend or holiday ridership.

Special Transportation Services

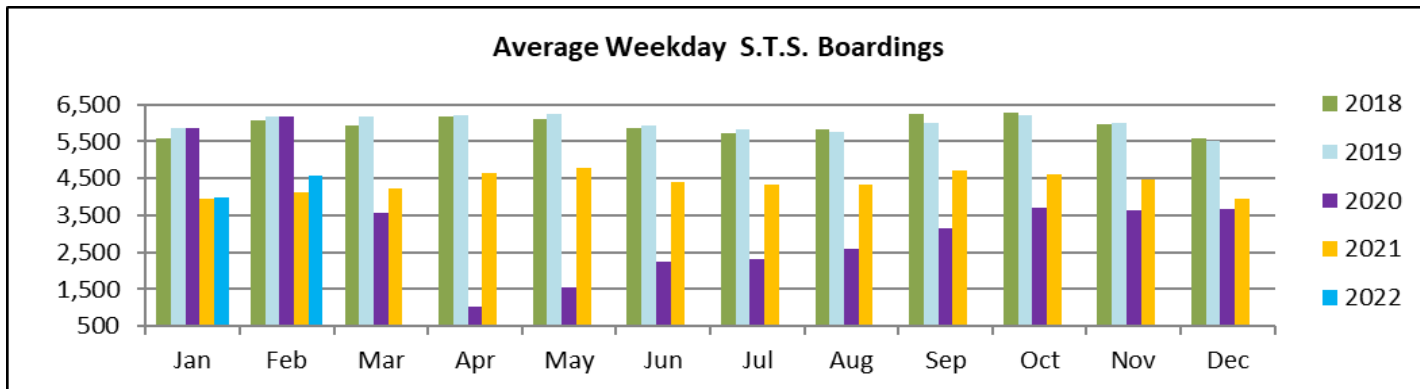
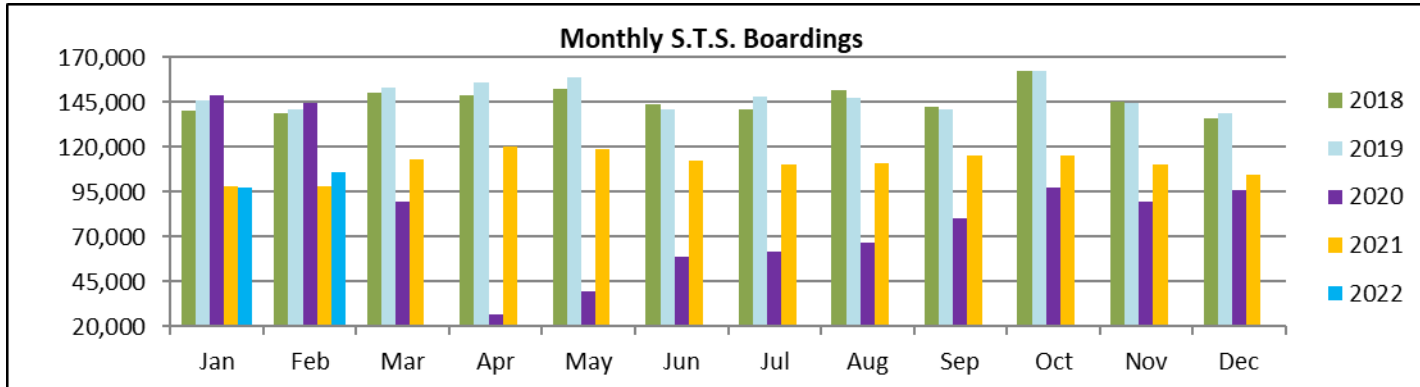


STS MONTHLY AND AVERAGE DAILY BOARDINGS
February 2022

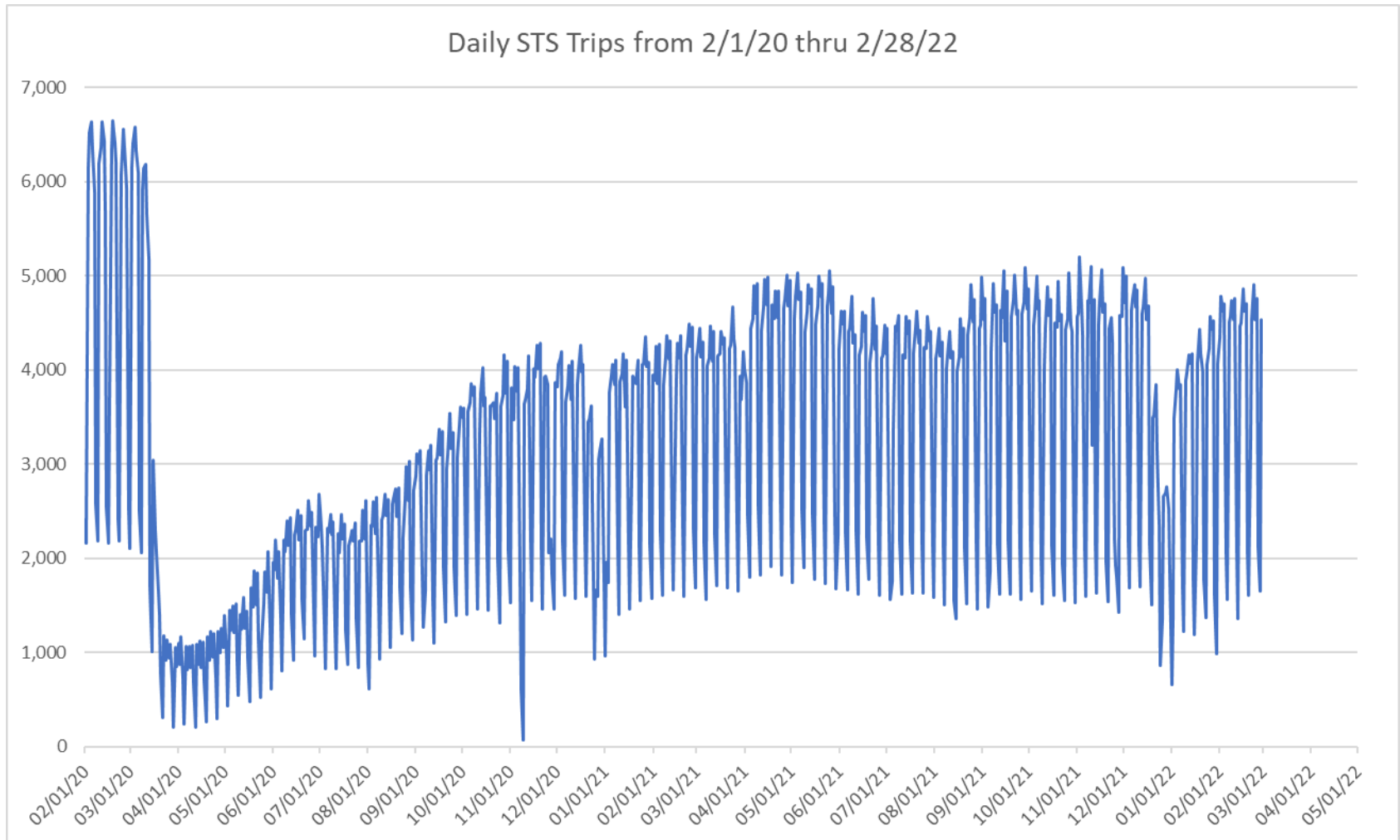
Measure	timeline	Ambulatory	Wheelchair	Total Clients (*)
Average Weekday	Feb-22	3,785	777	4,562
Average Saturday	Feb-22	1,702	366	2,068
Average Sunday	Feb-22	1,269	278	1,547
Total Monthly	Feb-22	87,592	18,114	105,706
Average Weekday	Feb-21	3,384	738	4,122
Average Saturday	Feb-21	1,877	444	2,321
Average Sunday	Feb-21	1,412	229	1,641
Total Monthly	Feb-21	80,832	17,453	98,285
Average Weekday	Feb-20	4,969	1,193	6,161
Average Saturday	Feb-20	1,922	571	2,493
Average Sunday	Feb-20	1,673	503	2,175
Total Monthly	Feb-20	115,671	28,721	144,392
% Change Current vs. Feb 2021 Weekday		11.9%	5.3%	10.7%
% Change Current vs. Feb 2021 Saturday		-9.3%	-17.6%	-10.9%
% Change Current vs. Feb 2021 Sunday		-10.1%	21.2%	-5.7%
% Change Current vs. Feb 2021 Month Total		8.4%	3.8%	7.6%
% Change Current vs. Feb 2020 Weekday		-23.8%	-34.9%	-26.0%
% Change Current vs. Feb 2020 Saturday		-11.5%	-35.9%	-17.0%
% Change Current vs. Feb 2020 Sunday		-24.1%	-44.8%	-28.9%
% Change Current vs. Feb 2020 Month Total		-24.3%	-36.9%	-26.8%

(*) Trip count data provided by STS contractor.

TOTAL MONTHLY AND AVERAGE WEEKDAY RIDERSHIP YEAR OVER YEAR COMPARISON CHARTS – SPECIAL TRANSPORTATION SERVICES (S.T.S.)

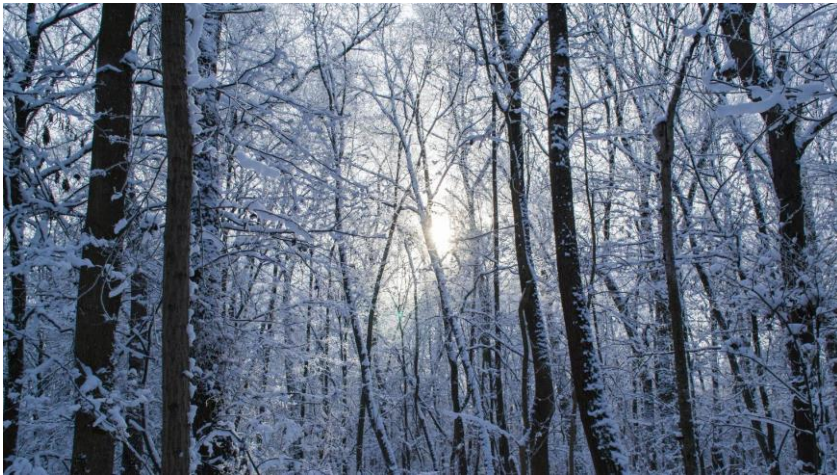


DAILY STS RIDERSHIP SINCE FEBRUARY 1, 2020

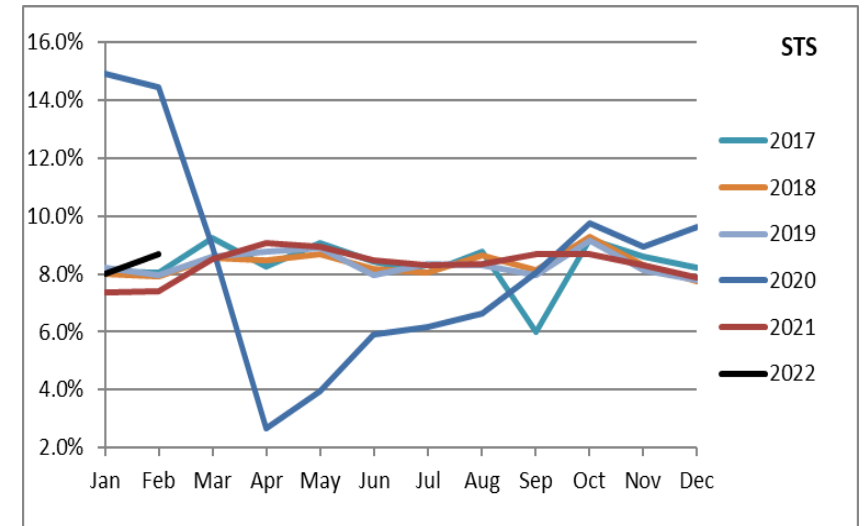
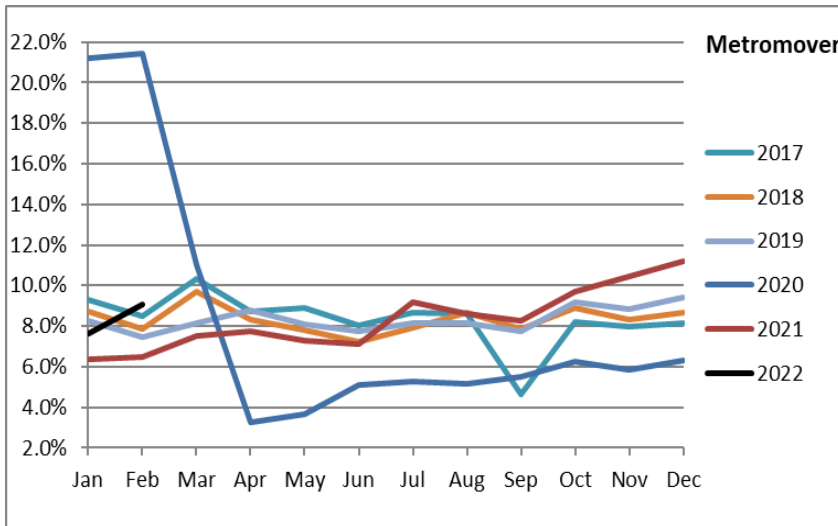
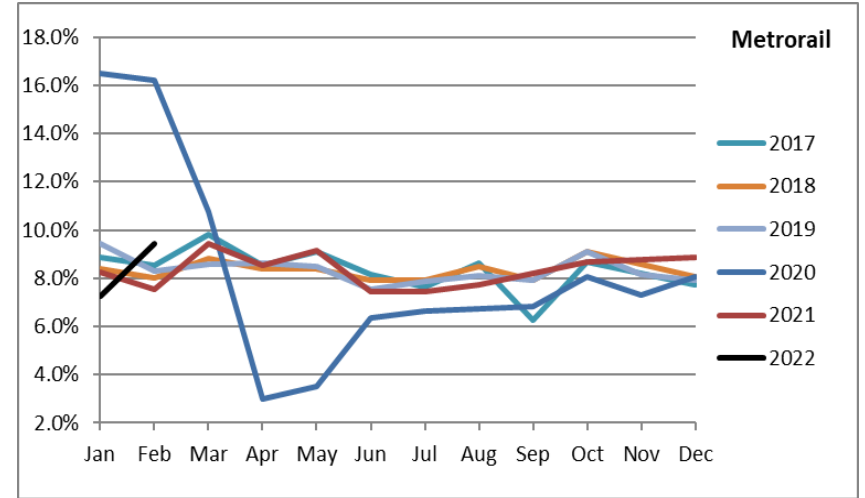
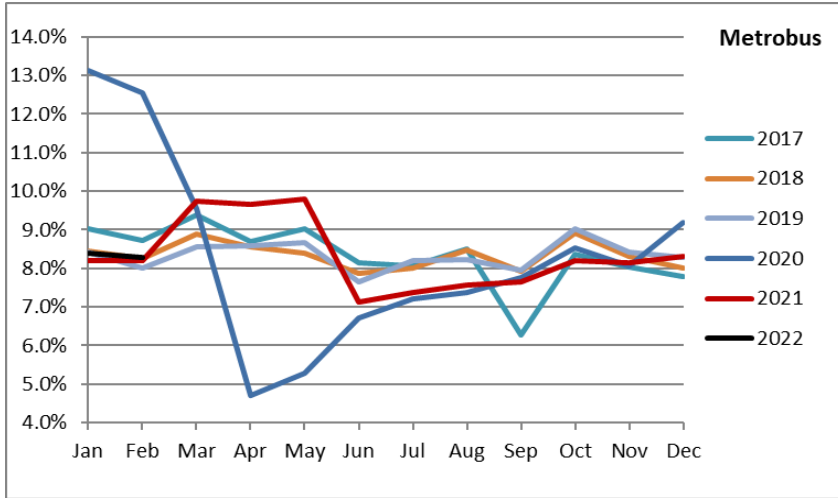


- (1) National Emergency was declared on 3/13/20 as a result of the SARS-CoV-2 pandemic.
- (2) The dip at the start of the second week of November 2020 is due to Hurricane Eta.
- (3) Periodic (weekly) variations are prominent, since weekday ridership is almost always significantly higher than weekend or holiday ridership.

Ridership Seasonality



RIDERSHIP SEASONALITY – PERCENT RIDERSHIP SHARE BY MONTH AND CALENDAR YEAR FOR EACH MODE



Note: the prominent dips seen in the fall of 2017 and beginning in the spring of 2020 are due to Hurricane Irma and the SARS-CoV-2 pandemic, respectively. Reductions in Bus and Rail ridership share seen beginning in June 2021 are due to reinstatement of fares as well changes in reporting tools and datasets, as discussed earlier in this report.