



# TRANSPORTATION AND PUBLIC WORKS

## RIDERSHIP TECHNICAL REPORT

*Division of Performance and Materials Management*



# Table of Contents

<i>Table of Contents</i>	2-3
<b>All Modes Overview</b>	<b>4</b>
Total Monthly Weekday, Saturday and Sunday Monthly Boardings By Mode	5
Average Weekday, Saturday and Sunday Boardings by Mode	6
Metrobus Total Monthly Ridership Comparisons by Fiscal Year	7
Metrorail Total Monthly Ridership Comparisons by Fiscal Year	8
Metromover Total Monthly Ridership Comparisons by Fiscal Year	9
STS Total Monthly Ridership Comparisons by Fiscal Year	10
All-Modes Combined Total Monthly Ridership Comparisons By Fiscal Year	11
All Modes Combined Total Monthly and Average Weekday Ridership – Year over Year Comparison Charts	12
Average Weekday Ridership – Modal Splits	13
Daily Ridership for All Modes Combined since February 1, 2020	14
<b>Metrobus</b>	<b>15</b>
Metrobus Average Weekday Boardings by Route	16-18
Metrobus Average Saturday Boardings by Route	19-20
Metrobus Average Sunday Boardings by Route	21-22
Metrobus Monthly Total Boardings by Route	23-25
Year-over-Year Bus Ridership by Route Service Type	26-27
Bus Routes as Ranked by Percentage of Average Weekday Ridership	28
Metrobus Cumulative Percentage Average Weekday Ridership Share by Route (Top 75%)	29
Total Monthly and Average Weekday Bus Ridership – Year over Year Comparison Charts	30
Bus “Top 5 / Bottom 5” Routes Average Weekday Ridership Performance	31
Daily Metrobus Ridership since February 1, 2020	32
Metrobus Parking Patronage Summary	33

## Table of Contents (continued)

<b>Metrorail</b>	<b>34</b>
Metrorail Average Weekday Boardings by Station	35
Metrorail Average Saturday Boardings by Station	36
Metrorail Average Sunday Boardings by Station	37
Metrorail Total Monthly Boardings by Station	38
Metrorail Cumulative Percentage Average Weekday Ridership Share	39
Total Monthly and Average Weekday Rail Ridership – Year over Year Comparison Charts	40
“Top 5 / Bottom 5” Stations Average Weekday Ridership Performance	41
Daily Metrorail Ridership since February 1, 2020	42
Metrorail Parking Patronage Summary	43
<b>Metromover</b>	<b>44</b>
Monthly and Average Daily Mover Boardings by Station	45
Metromover Cumulative Percentage Average Weekday Ridership Share	46
Total Monthly and Average Weekday Mover Ridership – Year over Year Comparison Charts	47
“Top 5 / Bottom 5” Stations Average Weekday Ridership Performance	48
Daily Metromover Ridership since February 1, 2020	49
<b>Special Transportation Services (STS)</b>	<b>50</b>
STS Monthly and Average Daily Boardings	51
Total Monthly and Average Weekday STS Ridership – Year over Year Comparison Charts	52
Daily STS Ridership since February 1, 2020	53
<b>Ridership Seasonality</b>	<b>54</b>
Ridership Seasonality – Percent Ridership Share by Month and Calendar year for Each Mode	55

# All Modes Overview



**TOTAL MONTHLY WEEKDAY, SATURDAY AND SUNDAY BOARDINGS BY MODE**  
**April 2022**

<b>TRAVEL MODE</b>	<b>MONTH'S TOTAL WEEKDAYS RIDERSHIP</b>	<b>MONTH'S TOTAL SATURDAYS RIDERSHIP</b>	<b>MONTH'S TOTAL SUNDAYS RIDERSHIP</b>	<b>TOTAL MONTHLY RIDERSHIP</b>	<b>% CHANGE vs Apr 2021 TOTAL MONTH RIDERSHIP</b>
<b>METROBUS (1)</b>	2,533,915	349,949	221,933	3,105,797	-14.3%
<b>METRORAIL (2)</b>	873,011	95,604	58,524	1,027,139	24.1%
<b>METROMOVER (3)</b>	380,462	69,016	46,504	495,982	59.6%
<b>STS PARATRANSIT (4)</b>	98,212	10,088	6,612	114,912	-4.3%
<b>TOTAL</b>	<b>3,885,600</b>	<b>524,657</b>	<b>333,573</b>	<b>4,743,830</b>	<b>-2.9%</b>

- (1) Metrobus fares resumed on June 1, 2021, following a 14-month period of fare-free rides as a result of the SARS-CoV-2 pandemic. The NextFare System farebox data replaced the bus automatic passenger counter data as ridership data of record starting on that date.
- (2) Metrorail fares resumed on June 1, 2021, following a 14-month period of fare-free rides as a result of the SARS-CoV-2 pandemic. The NextFare System faregate data replaced the video data as ridership data of record starting on that date.
- (3) Beginning March 13, 2020 (day of National Emergency Declaration due to SARS-CoV-2 pandemic), only raw data from Metromover automatic passenger counters is reported; no estimates are performed after March 13, 2020.
- (4) Paratransit ridership data as reported by the contractor.

**AVERAGE WEEKDAY, SATURDAY AND SUNDAY BOARDINGS BY MODE**  
**April 2022**

<b>Travel Mode</b>	<b>Average Weekday</b>	<b>Average Saturday</b>	<b>Average Sunday</b>	<b>% Change Apr 2021 Weekday</b>	<b>% Change Apr 2021 Saturday</b>	<b>% Change Apr 2021 Sunday</b>
<b>METROBUS</b>	120,722	70,043	55,483	-11.4%	-21.2%	-18.7%
<b>METRORAIL</b>	41,572	19,121	14,631	25.2%	-0.8%	-1.0%
<b>METROMOVER</b>	18,833	14,420	11,713	70.9%	50.4%	46.4%
<b>STS PARATRANSIT</b>	4,677	2,018	1,653	0.4%	-21.2%	-10.1%
<b>Totals (1)</b>	<b>185,804</b>	<b>105,602</b>	<b>83,480</b>	<b>0.3%</b>	<b>-12.3%</b>	<b>-10.1%</b>

(1) Average daily ridership is calculated and published only for those days and stations with nontrivial amounts of reported data.

## METROBUS TOTAL MONTHLY RIDERSHIP COMPARISONS BY FISCAL YEAR

Bus	FY 18	FY 19	Variance 18 to 19	FY 20	Variance 19 to 20	FY 21	FY 22	Variance 21 to 22	Variance 19 to 22	Variance 18 to 22
	<b>Oct</b>	4,709,590	4,554,886	-3.3%	4,507,012	-1.1%	2,805,139	3,081,157	9.8%	-32.4%
<b>Nov</b>	4,522,250	4,245,535	-6.1%	4,197,225	-1.1%	2,651,290	3,056,726	15.3%	-28.0%	-32.4%
<b>Dec</b>	4,380,099	4,081,581	-6.8%	4,126,990	1.1%	3,022,530	3,123,883	3.4%	-23.5%	-28.7%
<b>Jan</b>	4,307,001	4,195,911	-2.6%	4,316,998	2.9%	3,082,746	3,029,055	-1.7%	-27.8%	-29.7%
<b>Feb</b>	4,208,811	3,994,019	-5.1%	4,123,083	3.2%	3,076,966	2,995,789	-2.6%	-25.0%	-28.8%
<b>Mar</b>	4,534,564	4,266,768	-5.9%	3,136,162	-26.5%	3,660,639	3,218,562	-12.1%	-24.6%	-29.0%
<b>Apr</b>	4,360,997	4,291,135	-1.6%	1,544,316	-64.0%	3,625,048	3,105,797	-14.3%	-27.6%	-28.8%
<b>May</b>	4,277,628	4,330,922	1.2%	1,734,609	-59.9%	3,683,343				
<b>Jun</b>	4,009,340	3,823,863	-4.6%	2,210,725	-42.2%	2,672,570				
<b>Jul</b>	4,080,664	4,094,906	0.3%	2,366,749	-42.2%	2,769,907				
<b>Aug</b>	4,326,980	4,109,613	-5.0%	2,422,014	-41.1%	2,843,552				
<b>Sep</b>	4,041,992	3,971,220	-1.8%	2,546,923	-35.9%	2,877,110				
<b>FY Total</b>	<b>51,759,916</b>	<b>49,960,359</b>	<b>-3.5%</b>	<b>37,232,806</b>	<b>-25.5%</b>	<b>36,770,840</b>				

## METRORAIL TOTAL MONTHLY RIDERSHIP COMPARISONS BY FISCAL YEAR

Rail	Variance			Variance			Variance		Variance	
	FY 18	FY 19	18 to 19	FY 20	19 to 20	FY 21	FY 22	21 to 22	19 to 22	18 to 22
<b>Oct</b>	1,708,564	1,757,225	2.8%	1,643,166	-6.5%	769,525	844,383	9.7%	-51.9%	-50.6%
<b>Nov</b>	1,609,888	1,656,929	2.9%	1,469,448	-11.3%	699,492	850,881	21.6%	-48.6%	-47.1%
<b>Dec</b>	1,517,341	1,553,804	2.4%	1,433,928	-7.7%	769,194	860,436	11.9%	-44.6%	-43.3%
<b>Jan</b>	1,615,576	1,708,695	5.8%	1,576,340	-7.7%	799,119	832,924	4.2%	-51.3%	-48.4%
<b>Feb</b>	1,545,581	1,501,458	-2.9%	1,549,118	3.2%	730,792	905,162	23.9%	-39.7%	-41.4%
<b>Mar</b>	1,700,714	1,554,851	-8.6%	1,027,319	-33.9%	917,097	1,084,978	18.3%	-30.2%	-36.2%
<b>Apr</b>	1,619,890	1,559,446	-3.7%	287,803	-81.5%	827,414	1,027,139	24.1%	-34.1%	-36.6%
<b>May</b>	1,618,504	1,531,597	-5.4%	337,696	-78.0%	887,111				
<b>Jun</b>	1,524,311	1,359,966	-10.8%	608,758	-55.2%	723,469				
<b>Jul</b>	1,527,380	1,419,158	-7.1%	632,964	-55.4%	722,159				
<b>Aug</b>	1,632,471	1,463,646	-10.3%	641,275	-56.2%	749,578				
<b>Sep</b>	1,530,088	1,427,726	-6.7%	654,244	-54.2%	795,749				
<b>Total</b>	<b>19,150,308</b>	<b>18,494,501</b>	<b>-3.4%</b>	<b>11,862,059</b>	<b>-35.9%</b>	<b>9,390,699</b>				



## METROMOVER TOTAL MONTHLY RIDERSHIP COMPARISONS BY FISCAL YEAR

Mover	Variance			Variance			Variance		Variance	
	FY 18	FY 19	18 to 19	FY 20	19 to 20	FY 21	FY 22	21 to 22	19 to 22	18 to 22
<b>Oct</b>	751,323	790,533	5.2%	831,234	5.1%	250,044	389,065	55.6%	-50.8%	-48.2%
<b>Nov</b>	729,519	735,198	0.8%	799,632	8.8%	232,422	418,929	80.2%	-43.0%	-42.6%
<b>Dec</b>	748,797	767,239	2.5%	849,832	10.8%	251,019	450,320	79.4%	-41.3%	-39.9%
<b>Jan</b>	772,122	746,728	-3.3%	847,773	13.5%	255,968	451,566	76.4%	-39.5%	-41.5%
<b>Feb</b>	698,107	675,160	-3.3%	855,398	26.7%	260,332	465,968	79.0%	-31.0%	-33.3%
<b>Mar</b>	859,143	737,814	-14.1%	441,200	-40.2%	302,502	535,857	77.1%	-27.4%	-37.6%
<b>Apr</b>	740,036	795,696	7.5%	130,549	-83.6%	310,772	495,982	59.6%	-37.7%	-33.0%
<b>May</b>	694,106	734,645	5.8%	146,454	-80.1%	292,922				
<b>Jun</b>	641,675	701,318	9.3%	203,637	-71.0%	286,145				
<b>Jul</b>	700,462	739,814	5.6%	210,596	-71.5%	368,847				
<b>Aug</b>	768,728	739,785	-3.8%	205,995	-72.2%	344,319				
<b>Sep</b>	698,505	699,879	0.2%	219,696	-68.6%	331,915				
<b>Total</b>	<b>8,802,523</b>	<b>8,863,809</b>	<b>0.7%</b>	<b>5,741,996</b>	<b>-35.2%</b>	<b>3,487,207</b>				

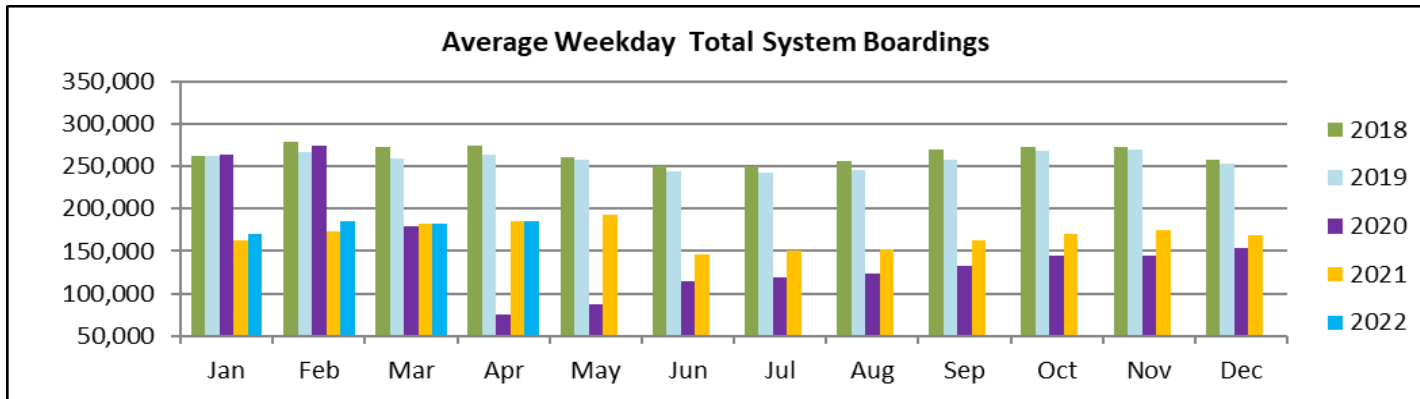
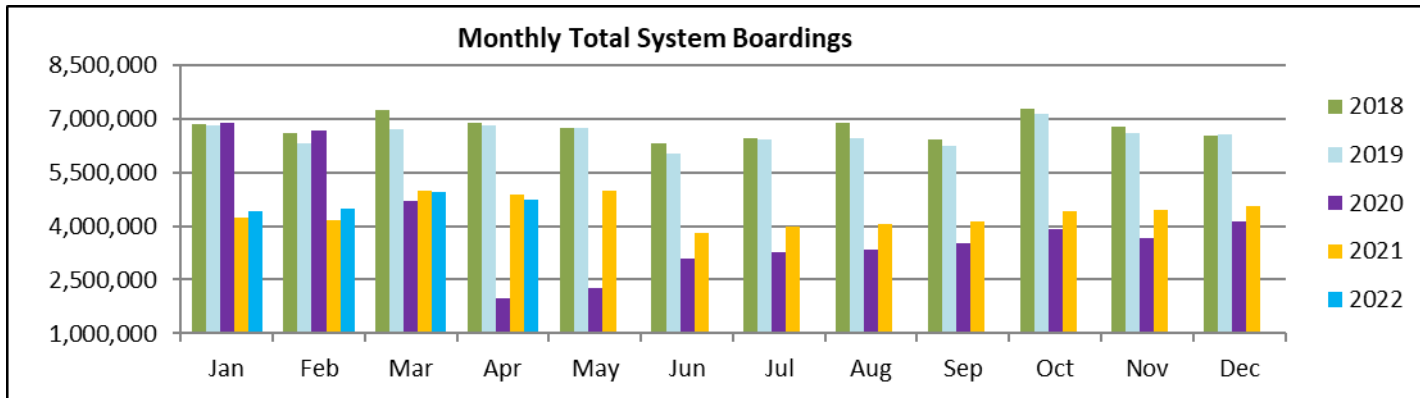
## SPECIAL TRANSPORTATION SERVICES (STS) TOTAL MONTHLY RIDERSHIP COMPARISONS BY FISCAL YEAR

STS	Variance			Variance			Variance		Variance	
	FY 18	FY 19	18 to 19	FY 20	19 to 20	FY 21	FY 22	21 to 22	19 to 22	18 to 22
<b>Oct</b>	153,409	162,564	6.0%	162,704	0.1%	97,388	115,122	18.2%	-29.2%	-25.0%
<b>Nov</b>	143,375	145,653	1.6%	144,366	-0.9%	89,387	110,289	23.4%	-24.3%	-23.1%
<b>Dec</b>	136,955	136,110	-0.6%	138,642	1.9%	96,366	104,496	8.4%	-23.2%	-23.7%
<b>Jan</b>	140,042	146,268	4.4%	149,114	1.9%	97,928	97,541	-0.4%	-33.3%	-30.3%
<b>Feb</b>	139,032	141,396	1.7%	144,392	2.1%	98,285	105,706	7.6%	-25.2%	-24.0%
<b>Mar</b>	150,384	153,191	1.9%	89,634	-41.5%	112,930	120,718	6.9%	-21.2%	-19.7%
<b>Apr</b>	148,879	155,808	4.7%	26,877	-82.7%	120,122	114,912	-4.3%	-26.2%	-22.8%
<b>May</b>	152,164	158,665	4.3%	39,654	-75.0%	118,636				
<b>Jun</b>	143,653	141,320	-1.6%	59,093	-58.2%	112,397				
<b>Jul</b>	141,020	148,232	5.1%	61,765	-58.3%	110,059				
<b>Aug</b>	151,750	147,331	-2.9%	66,563	-54.8%	110,766				
<b>Sep</b>	142,360	141,387	-0.7%	80,346	-43.2%	115,406				
<b>Total</b>	<b>1,743,023</b>	<b>1,777,925</b>	<b>2.0%</b>	<b>1,163,150</b>	<b>-34.6%</b>	<b>1,279,670</b>				

## ALL-MODES COMBINED TOTAL MONTHLY RIDERSHIP COMPARISONS BY FISCAL YEAR

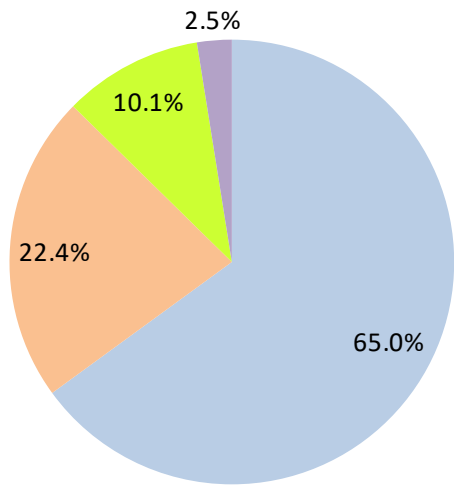
All Modes Month						Variances					
	FY 18	FY 19	FY 20	FY 21	FY 22	18 TO 19	19 TO 20	20 TO 21	21 TO 22	19 TO 22	18 TO 22
<b>Oct</b>	7,322,886	7,265,208	7,144,116	3,922,096	4,429,727	-0.8%	-1.7%	-45.1%	12.9%	-39.0%	-39.5%
<b>Nov</b>	7,005,032	6,783,315	6,610,671	3,672,591	4,436,825	-3.2%	-2.5%	-44.4%	20.8%	-34.6%	-36.7%
<b>Dec</b>	6,783,192	6,538,734	6,549,392	4,139,109	4,539,135	-3.6%	0.2%	-36.8%	9.7%	-30.6%	-33.1%
<b>Jan</b>	6,834,741	6,797,602	6,890,225	4,235,761	4,411,086	-0.5%	1.4%	-38.5%	4.1%	-35.1%	-35.5%
<b>Feb</b>	6,591,531	6,312,033	6,671,991	4,166,375	4,472,625	-4.2%	5.7%	-37.6%	7.4%	-29.1%	-32.1%
<b>Mar</b>	7,244,805	6,712,624	4,694,315	4,993,168	4,960,115	-7.3%	-30.1%	6.4%	-0.7%	-26.1%	-31.5%
<b>Apr</b>	6,869,802	6,802,085	1,989,545	4,883,356	4,743,830	-1.0%	-70.8%	145.5%	-2.9%	-30.3%	-30.9%
<b>May</b>	6,742,402	6,755,829	2,258,413	4,982,012		0.2%	-66.6%	120.6%			
<b>Jun</b>	6,318,979	6,026,467	3,082,213	3,794,581		-4.6%	-48.9%	23.1%			
<b>Jul</b>	6,449,526	6,402,110	3,272,074	3,970,972		-0.7%	-48.9%	21.4%			
<b>Aug</b>	6,879,929	6,460,375	3,335,847	4,048,215		-6.1%	-48.4%	21.4%			
<b>Sep</b>	6,412,945	6,240,212	3,501,209	4,120,180		-2.7%	-43.9%	17.7%			
<b>FY Total</b>	<b>81,455,770</b>	<b>79,096,594</b>	<b>56,000,011</b>	<b>50,928,416</b>		<b>-2.9%</b>	<b>-29.2%</b>	<b>-9.1%</b>			

## TOTAL MONTHLY AND AVERAGE WEEKDAY RIDERSHIP YEAR OVER YEAR COMPARISON CHARTS – ALL MODES COMBINED



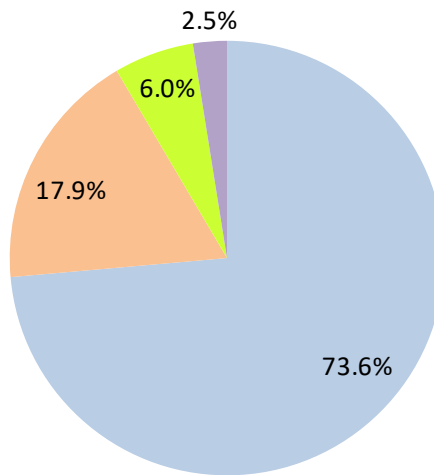
# AVERAGE WEEKDAY RIDERSHIP - MODAL SPLITS

April 2022



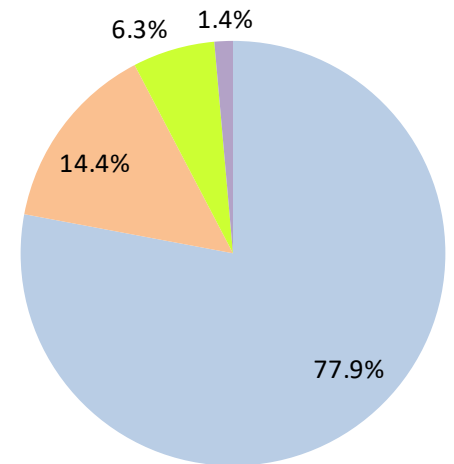
boardings

April 2021



boardings

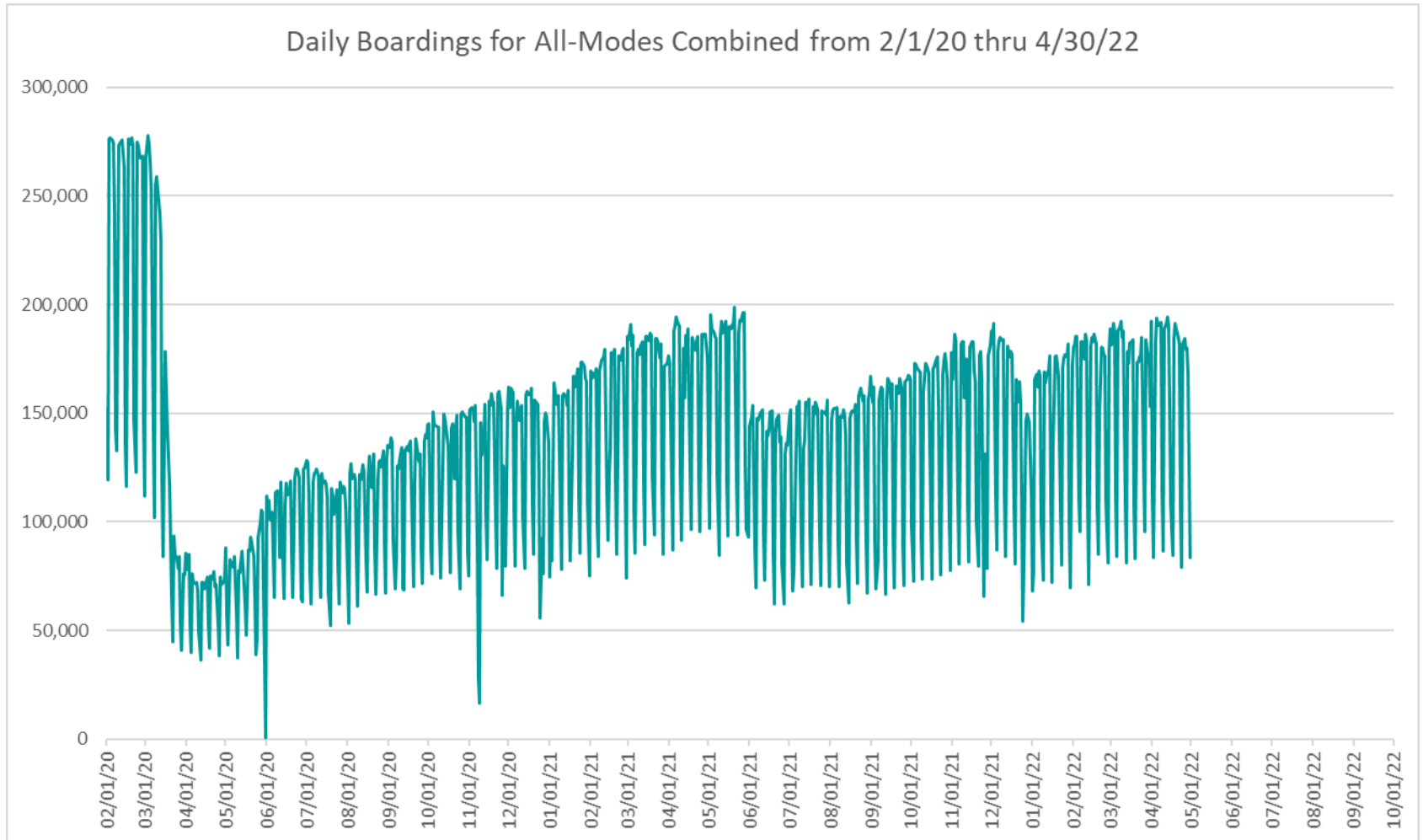
April 2020



boardings



## DAILY RIDERSHIP FOR ALL MODES COMBINED SINCE FEBRUARY 1, 2020



- (1) National Emergency was declared on 3/13/20 as a result of the SARS-CoV-2 pandemic.
- (2) There was no Metrobus, Metrorail and Metromover service on 5/31/20, as a safety precaution.
- (3) The dip at the start of the second week of November 2020 is due to Hurricane Eta.
- (4) The reduction seen beginning 6/1/21 is partly due to the resumption of fares for bus and rail, and partly the result of having resumed reporting Cubic farebox data rather than bus APC counts, as well as Cubic rail faregate counts instead of video camera counts on that date.
- (5) Periodic (weekly) variations are prominent, since weekday ridership is almost always significantly higher than weekend or holiday ridership.

# Metrobus



## METROBUS AVERAGE WEEKDAY BOARDINGS BY ROUTE (†)

Route <b>weekdays</b>	Average Weekday	Average Weekday	Percent Change	Average Weekday	Percent Change	Average Weekday	Percent Change	Average Weekday	Percent Change
	Apr-22	Apr-21	YOY	Feb-20	Current vs Feb-20	Mar-22	MOM	Apr-20	YO2Y
1 (*)	130	228	-43.0%	184	-29.3%	168	-22.6%	88	48.0%
2	1,971	2,229	-11.6%	3,102	-36.4%	1,919	2.7%	1,117	76.5%
3	3,698	5,347	-30.8%	5,137	-28.0%	3,694	0.1%	1,552	138.3%
7	2,960	2,664	11.1%	3,501	-15.4%	2,792	6.0%	775	282.2%
8	3,358	4,384	-23.4%	3,909	-14.1%	3,324	1.0%	1,186	183.2%
9	3,911	6,420	-39.1%	5,528	-29.3%	3,793	3.1%	2,249	73.9%
10	1,775	1,902	-6.7%	2,482	-28.5%	1,792	-0.9%	595	198.4%
11	6,257	6,567	-4.7%	7,292	-14.2%	5,929	5.5%	2,604	140.3%
12	1,771	1,646	7.6%	2,779	-36.3%	1,759	0.7%	1,156	53.2%
16	1,369	1,484	-7.8%	1,862	-26.5%	1,388	-1.4%	702	95.0%
17	2,413	2,956	-18.4%	3,878	-37.8%	2,368	1.9%	1,535	57.3%
19	888	1,224	-27.4%	1,542	-42.4%	874	1.6%	297	198.7%
21	1,141	1,694	-32.6%	1,817	-37.2%	1,145	-0.3%	1,118	2.0%
22	2,506	2,828	-11.4%	3,640	-31.1%	2,461	1.8%	1,061	136.2%
24 - Coral Way Limited	1,276	1,534	-16.8%	1,340	-4.7%	1,433	-10.9%	636	100.6%
27	5,053	5,729	-11.8%	6,972	-27.5%	4,963	1.8%	2,552	98.0%
29 (*)	464	386	20.3%	534	-13.1%	467	-0.7%	195	138.7%
31 - BUSWAY LOCAL	697	733	-5.0%	1,089	-36.0%	676	3.1%	311	124.4%
32	1,742	1,653	5.4%	2,390	-27.1%	1,642	6.1%	944	84.5%
33	1,265	1,125	12.4%	1,687	-25.0%	1,142	10.7%	514	146.0%
34 EXPRESS	922	842	9.6%	2,008	-54.1%	883	4.4%	242	280.4%
35	1,519	1,872	-18.9%	2,421	-37.3%	1,448	4.9%	1,238	22.7%
36	1,970	1,794	9.8%	2,536	-22.3%	1,963	0.3%	1,225	60.8%
37	2,690	3,129	-14.0%	3,273	-17.8%	2,533	6.2%	1,108	142.9%
38	3,577	4,593	-22.1%	6,361	-43.8%	3,486	2.6%	2,400	49.1%
39 EXPRESS		277		893				74	
40	1,414	1,055	34.0%	1,772	-20.2%	1,360	3.9%	501	182.1%
42	708	723	-2.1%	820	-13.7%	653	8.4%	252	181.5%
46 - LIBERTY CITY CONN. (*)	25	24	3.0%	41	-38.8%	22	13.9%	22	13.4%
51 - FLAGLER MAX	2,716	2,563	6.0%	3,109	-12.6%	2,615	3.9%	575	372.4%
52	846	915	-7.6%	1,261	-32.9%	791	6.9%	497	70.3%
54	2,292	2,215	3.4%	2,940	-22.1%	2,112	8.5%	1,613	42.1%
55 MARLINS SHUTTLE									
56 (*)	291	208	40.0%	354	-17.8%	276	5.2%	72	305.5%
57	280	345	-18.9%	433	-35.5%	285	-1.9%	108	159.1%
62	1,234	1,641	-24.8%	1,815	-32.0%	1,167	5.7%	1,186	4.1%
71 (*)	538	436	23.4%	711	-24.3%	522	3.1%	166	223.4%
72 (*)	555	427	30.1%	781	-28.9%	548	1.3%	232	139.4%

(†) In this table and those which follow, "YOY" stands for "year-over-year", "MOM" for "month-over-month" and "YO2Y" for "year over two years", i.e., current month vs 12 months prior, one month prior, and 24 months prior, respectively.

(\*) Contracted routes

(\*\*) Due to effects from the SARS-CoV-2 pandemic; rides were fare-free beginning March 22, 2020; fares were reinstated on June 1, 2021, in part accounting for the drop in ridership from May 2021.



## METROBUS AVERAGE WEEKDAY BOARDINGS BY ROUTE

Route <i>weekdays</i>	Average Weekday	Average Weekday	Percent Change	Average Weekday	Percent Change	Average Weekday	Percent Change	Average Weekday	Percent Change
	Apr-22	Apr-21	YOY	Feb-20	Current vs Feb-20	Mar-22	MOM	Apr-20	YO2Y
73	2,098	1,636	28.2%	2,124	-1.2%	2,003	4.7%	552	280.1%
75	770	1,158	-33.5%	1,429	-46.1%	813	-5.3%	394	95.3%
77	5,344	7,042	-24.1%	7,129	-25.0%	5,372	-0.5%	2,949	81.2%
79 STREET MAX	293			361	-18.8%	274	7.1%	57	417.2%
82 - WESTCHESTER CIRC. (*)	34	41	-17.6%	62	-45.1%	27	26.3%	18	91.4%
87	1,400	1,267	10.5%	1,499	-6.6%	1,255	11.6%	329	325.3%
88	1,555	1,874	-17.1%	2,076	-25.1%	1,528	1.7%	590	163.5%
93 - BISCAYNE MAX	2,219	1,933	14.8%	3,334	-33.5%	2,217	0.1%	881	151.7%
95 EXPRESS	802	418	91.8%	1,690	-52.6%	796	0.7%	328	144.7%
99	1,195	1,263	-5.4%	1,473	-18.9%	1,099	8.7%	435	174.4%
101 - A (*)	183	139	31.6%	177	3.3%	196	-6.6%	32	465.7%
102 - B	1,367	1,171	16.7%	1,778	-23.1%	1,359	0.6%	419	226.3%
103 - C		250		463				244	
104	532	371	43.4%	837	-36.5%	526	1.2%	124	329.9%
105 - E	965	1,394	-30.8%	1,287	-25.1%	975	-1.1%	438	120.2%
107 - G	1,231	1,175	4.8%	1,713	-28.1%	1,199	2.7%	377	226.4%
108 - H	358	494	-27.5%	473	-24.2%	348	2.8%	136	163.6%
110 - J	2,155	2,777	-22.4%	2,508	-14.1%	2,136	0.9%	1,015	112.3%
112 - L	5,636	7,542	-25.3%	7,636	-26.2%	5,652	-0.3%	3,786	48.9%
113 - M	501	536	-6.5%	866	-42.1%	514	-2.6%	562	-10.9%
115 (*)	159	204	-22.0%	180	-11.5%	137	16.6%	114	40.3%
119 - S	7,034	9,360	-24.9%	8,970	-21.6%	7,137	-1.4%	3,613	94.7%
120 - BEACH MAX	5,016	5,277	-5.0%	6,667	-24.8%	4,836	3.7%	2,030	147.1%
132 TRI-RAIL (DORAL)	2	21	-91.7%	16	-89.1%	5	-67.3%	9	-81.8%
135	941	896	5.1%	1,399	-32.7%	826	14.0%	417	125.6%
136	91	74	23.2%	126	-28.1%	109	-16.5%	20	346.5%
137 - WEST DADE CONN.	1,341	1,181	13.5%	1,626	-17.5%	1,241	8.0%	396	239.0%
150 - MIAMI BEACH AIRPORT FLYER	1,474	1,332	10.7%	1,867	-21.0%	1,382	6.7%	449	228.2%
155 - BISCAYNE GARDENS CIRCULATOR (*)	38	33	13.4%	44	-14.7%	36	3.4%	24	57.7%
175 - NW MIAMI-DADE EXPRESS				33					
183	1,891	2,820	-32.9%	3,149	-39.9%	2,120	-10.8%	905	109.0%
195 EXPRESS - BROWARD BLVD				372					
196 EXPRESS - SHERIDAN ST				383					
200 - CUTLER BAY LOCAL	2	143	-98.5%	158	-98.6%	66	-96.7%	52	-95.8%
202 - LITTLE HAITI CONN. (*)	104	120	-13.2%	140	-25.5%	107	-2.6%	95	9.4%
204 KILLIAN KAT	472			1,071	-55.9%	432	9.4%	141	235.4%

## METROBUS AVERAGE WEEKDAY BOARDINGS BY ROUTE

Route <b>weekdays</b>	Average Weekday	Average Weekday	Percent Change	Average Weekday	Percent Change	Average Weekday	Percent Change	Average Weekday	Percent Change
	Apr-22	Apr-21	YOY	Feb-20	Current vs Feb-20	Mar-22	MOM	Apr-20	YO2Y
207 (7st) - LITTLE HAVANA CIRC	1,101	770	42.9%	1,489	-26.1%	1,044	5.5%	646	70.3%
208 (8st) - LITTLE HAVANA CIRC	1,010	918	10.1%	1,308	-22.7%	880	14.8%	621	62.7%
210 - SKYLAKE CIRC (*)	331	351	-5.8%	282	17.4%	274	20.7%	141	134.4%
211 - OVERTOWN CIRC. (*)	86	36	137.3%	58	48.9%	84	2.6%	59	46.5%
212 - SWEETWATER CIRC. (*)	20	18	7.6%	15	34.6%	21	-6.6%	8	152.5%
217 - BUNCHE PARK CIRC (*)	77	67	14.6%	97	-21.1%	72	7.0%	50	55.0%
238 EAST/WEST CONN.	397	346	14.8%	449	-11.5%	328	21.1%	45	778.0%
241 TUTTLE LIMITED	69					82	-15.2%		
246 - NIGHT OWL	29	95	-69.3%	94	-68.8%	35	-16.8%	54	-45.9%
248 - PRINCETON CIRCULATOR (*)	85	75	13.4%	135	-36.7%	72	18.6%	57	48.5%
252 - CORAL REEF MAX	621	534	16.3%	851	-27.0%	598	3.8%	164	279.0%
254 - BROWNSVILLE CIRC. (*)	6	16	-65.3%	19	-70.5%	6	-0.5%	28	-80.1%
267 - LUDLAM LIMITED (*)	126	105	19.5%	149	-15.6%	123	2.0%	49	154.9%
272 SUNSET KAT (*)	314	265	18.4%	550	-42.9%	307	2.3%	132	137.8%
277 - 7th AVENUE MAX	426	542	-21.4%	683	-37.7%	462	-7.7%	286	49.1%
286 - NORTH POINTE CIRC. (*)	60	38	59.0%	97	-38.4%	57	4.8%	14	328.3%
287 - SAGA BAY MAX	200	174	15.0%	358	-44.1%	210	-4.8%	90	122.0%
288 - KENDALL CRUISER	424			762	-44.4%	394	7.6%	175	142.1%
295 EXPRESS - BROWARD BLVD - CIVIC CENTER				233					
296 EXPRESS - SHERIDAN ST - CIVIC CENTER				215					
297-27th AVENUE ORANGE MAX	797	901	-11.6%	1,356	-41.2%	808	-1.4%	454	75.7%
301 DADE-MONROE EXPRESS (*)	760	917	-17.1%	841	-9.7%	761	-0.1%	264	188.3%
302 CARD SOUND EXPRESS (*)	74	78	-4.4%	86	-13.9%	71	3.9%	27	173.1%
344 (*)	52	80	-34.8%	96	-45.8%	45	16.1%	38	37.5%
500	14	61	-77.3%	81	-83.0%	10	40.0%	2	623.4%
836 EXPRESS	147	83	77.0%			137	7.3%		
GREEN HILLS SHUTTLE (*)	5	6	-13.0%	9	-44.4%	6	-16.7%	16	-68.3%
KINGS CREEK SHUTTLE (*)	18	7	176.5%	13	40.4%	14	30.4%	4	406.9%
SIERRALAKES SHUTTLE (*)	16	22	-27.3%	45	-64.4%	15	10.3%	19	-16.9%
ROBERT SHARP SHUTTLE (*)	18	24	-26.3%	10	84.2%	18	-3.8%	8	130.3%
AHEPA SHUTTLE (*)	14	16	-13.6%	21	-32.5%	18	-21.3%	20	-28.6%
<b>Total</b>	<b>120,722</b>	<b>136,282</b>	<b>-11.4%</b>	<b>167,711</b>	<b>-28.0%</b>	<b>118,069</b>	<b>2.2%</b>	<b>58,097</b>	<b>107.8%</b>

(\*) The following routes are entirely operated under contract: 1, 29, 46, 56, 71, 72, 82, 101-A, 115, 155, 202, 210, 211, 212, 217, 246, 248, 254, 267, 272, 286, 301, 302 and 344.

(1) Includes shuttles and those routes which were not run both years.

(2) Several express routes were suspended beginning at the end of March 2020, due to the SARS-CoV-2 pandemic, while other routes had alignment and schedule modifications made to them, in an ongoing effort to optimize service delivery.

## METROBUS AVERAGE SATURDAY BOARDINGS BY ROUTE

Route	Average Saturday	Average Saturday	Percent Change	Average Saturday	Percent Change	Average Saturday	Percent Change	Average Saturday	Percent Change
	Apr-22	Apr-21	YOY	Feb-20	Current vs Feb-20	Mar-22	MOM	Apr-20	YO2Y
<b>Saturdays</b>									
1 (*)	131	231	-43.2%	215	-39.1%	133	-1.1%	133	-1.3%
2	1,067	1,465	-27.1%	1,616	-34.0%	1,004	6.3%	807	32.2%
3	3,748	4,823	-22.3%	5,229	-28.3%	3,833	-2.2%	1,838	103.9%
7	1,548	1,686	-8.2%	1,887	-18.0%	1,531	1.1%	517	199.6%
8	1,869	2,423	-22.9%	2,027	-7.8%	1,956	-4.4%	1,107	68.9%
9	2,163	2,963	-27.0%	3,034	-28.7%	2,062	4.9%	1,434	50.9%
10	1,257	1,740	-27.8%	1,896	-33.7%	1,454	-13.5%	780	61.1%
11	3,721	4,329	-14.1%	5,182	-28.2%	4,453	-16.4%	2,435	52.8%
16	976	1,421	-31.4%	1,566	-37.7%	1,128	-13.5%	676	44.4%
17	1,656	2,501	-33.8%	2,363	-29.9%	1,541	7.4%	1,235	34.1%
22	1,623	2,173	-25.3%	2,084	-22.1%	1,624	0.0%	1,055	53.9%
24 - Coral Way Limited	1,083	1,300	-16.6%	1,165	-7.0%	1,002	8.2%	467	132.1%
27	2,744	4,460	-38.5%	4,034	-32.0%	3,000	-8.5%	2,017	36.1%
31 - BUSWAY LOCAL	575	924	-37.8%	896	-35.8%	569	1.1%	313	83.5%
32	869	865	0.5%	1,029	-15.6%	887	-2.1%	671	29.4%
33	799	872	-8.4%	951	-16.0%	749	6.7%	425	88.1%
35	921	1,174	-21.5%	1,372	-32.8%	975	-5.4%	752	22.6%
36	1,217	1,527	-20.3%	1,289	-5.6%	1,091	11.5%	546	122.7%
37	1,481	1,899	-22.0%	2,090	-29.1%	1,452	2.0%	796	86.1%
38	2,884	3,337	-13.6%	4,715	-38.8%	2,941	-2.0%	1,863	54.8%
40	479	656	-27.0%	655	-26.8%	579	-17.2%	261	83.3%
42	447	603	-25.8%	552	-18.9%	476	-6.0%	283	58.0%
52	411	647	-36.5%	686	-40.1%	449	-8.6%	273	50.4%
54	1,377	1,799	-23.4%	1,727	-20.2%	1,338	2.9%	1,008	36.7%
55 MARLINS SHUTTLE									
62	881	1,388	-36.5%	1,343	-34.4%	974	-9.6%	945	-6.8%
71 (*)	190	215	-11.9%	252	-24.7%	280	-32.3%	50	277.3%
72 (*)	303	232	30.4%	350	-13.4%	288	5.0%	124	145.2%
73	969	1,026	-5.5%	860	12.7%	853	13.7%	208	367.2%
75	243	526	-53.7%	468	-48.0%	277	-12.2%	316	-23.0%
77	3,496	4,033	-13.3%	4,197	-16.7%	3,610	-3.2%	2,109	65.8%
87	416	489	-15.0%	402	3.3%	423	-1.8%	131	217.9%
88	1,250	1,382	-9.6%	1,620	-22.8%	1,306	-4.3%	504	148.1%
99	713	952	-25.1%	849	-16.0%	739	-3.6%	249	186.9%

## METROBUS AVERAGE SATURDAY BOARDINGS BY ROUTE

Route	Average Saturday	Average Saturday	Percent Change	Average Saturday	Percent Change	Average Saturday	Percent Change	Average Saturday	Percent Change
	Apr-22	Apr-21	YOY	Feb-20	Current vs Feb-20	Mar-22	MOM	Apr-20	YO2Y
<b>Saturdays</b>									
101 - A (*)	63	80	-21.5%	71	-11.0%	75	-16.3%	35	78.7%
102 - B	532	775	-31.4%	851	-37.5%	728	-27.0%	278	91.1%
103 - C		296		315				212	
104	300	150	99.8%	468	-35.9%	297	1.2%	63	376.5%
105 - E	557	838	-33.5%	619	-10.0%	570	-2.1%	279	99.8%
107 - G	639	1,073	-40.4%	1,066	-40.0%	845	-24.3%	217	194.2%
108 - H	260	485	-46.4%	372	-30.3%	326	-20.4%	167	55.2%
110 - J	1,660	1,995	-16.8%	1,952	-15.0%	1,554	6.9%	833	99.3%
112 - L	4,275	5,067	-15.6%	5,667	-24.6%	4,837	-11.6%	2,893	47.8%
113 - M	310	469	-33.8%	503	-38.3%	344	-9.8%	372	-16.6%
115 (*)	103	154	-33.1%	82	25.5%	126	-17.9%	81	27.4%
119 - S	5,330	7,235	-26.3%	6,861	-22.3%	5,015	6.3%	2,621	103.4%
120 - BEACH MAX	3,538	3,746	-5.6%	4,744	-25.4%	3,806	-7.1%	1,589	122.7%
135	296	340	-12.9%	539	-45.0%	274	8.3%	275	7.8%
137 - WEST DADE CONN.	975	927	5.2%	1,027	-5.0%	986	-1.0%	310	214.3%
150 - MIAMI BEACH AIRPORT FLYER	1,377	1,405	-2.0%	1,604	-14.1%	1,366	0.9%	445	209.8%
183	1,337	1,873	-28.6%	1,790	-25.3%	1,495	-10.6%	904	47.9%
200 - CUTLER BAY LOCAL	28	108	-74.5%	119	-76.9%	58	-52.6%	55	-50.2%
202 - LITTLE HAITI CONN. (*)	41	65	-36.9%	50	-17.9%	53	-22.3%	85	-51.7%
207 (7st) - LITTLE HAVANA CIRC	721	783	-7.9%	1,032	-30.2%	577	25.0%	442	63.2%
208 (8st) - LITTLE HAVANA CIRC	753	937	-19.6%	1,044	-27.9%	604	24.8%	517	45.6%
210 - SKYLAKE CIRC (*)	161	130	24.6%	165	-2.2%	133	21.6%	94	72.2%
241 TUTTLE LIMITED	78					33	138.2%		
246 - NIGHT OWL	55	85	-35.1%	84	-34.8%	56	-2.2%	59	-6.8%
252 - CORAL REEF MAX	224	252	-11.1%	302	-25.8%	267	-16.1%	100	124.2%
286 - NORTH POINTE CIRC. (*)	55	34	62.9%	41	35.8%	52	6.5%	14	295.7%
301 DADE-MONROE EXPRESS(*)	682	837	-18.4%	801	-14.8%	725	-5.9%	236	189.2%
302 CARD SOUND EXPRESS(*)	52	87	-39.7%	57	-7.8%	60	-12.3%	20	161.0%
338 - WEEKEND EXPRESS	166	188	-11.4%	237	-29.7%	150	11.1%	6	2922.7%
500	12	101	-88.1%	70	-82.9%	12	-2.0%		
12/21 WEEKEND INTERL.	1,898	2,308	-17.8%	2,528	-24.9%	1,741	9.0%	592	220.6%
FEDERATION GARDENS SHUTTLE (*)	18	20	-9.0%	28	-37.5%	21	-13.4%	15	20.3%
<b>Total</b>	<b>70,043</b>	<b>88,930</b>	<b>-21.2%</b>	<b>93,742</b>	<b>-25.3%</b>	<b>72,191</b>	<b>-3.0%</b>	<b>40,149</b>	<b>74.5%</b>

## METROBUS AVERAGE SUNDAY BOARDINGS BY ROUTE

Route <b>Sundays</b>	Average Sunday	Average Sunday	Percent Change	Average Sunday	Percent Change	Average Sunday	Percent Change	Average Sunday	Percent Change
	Apr-22	Apr-21	YOY	Feb-20	Current vs Feb-20	Mar-22	MOM	Apr-20	YO2Y
1 (*)	153	180	-14.7%	201	-23.7%	146	5.1%	103	48.4%
2	727	996	-27.1%	1,335	-45.5%	792	-8.2%	540	34.5%
3	3,058	4,372	-30.1%	4,353	-29.8%	3,052	0.2%	1,484	106.1%
7	1,223	1,093	11.9%	1,654	-26.0%	1,220	0.2%	344	255.6%
8	1,528	1,698	-10.0%	1,746	-12.5%	1,212	26.1%	757	101.8%
9	1,885	2,434	-22.6%	2,549	-26.1%	1,931	-2.4%	1,103	71.0%
10	1,046	1,466	-28.7%	1,441	-27.4%	1,023	2.2%	573	82.6%
11	3,147	2,808	12.1%	3,917	-19.7%	2,703	16.4%	1,771	77.7%
16	749	692	8.2%	997	-24.8%	769	-2.6%	435	72.4%
17	1,084	1,777	-39.0%	1,833	-40.8%	1,278	-15.1%	671	61.6%
22	1,254	1,636	-23.4%	1,548	-19.0%	1,217	3.0%	554	126.3%
24 - Coral Way Limited	872	852	2.3%	905	-3.6%	931	-6.4%	364	139.8%
27	2,217	2,968	-25.3%	2,918	-24.0%	2,250	-1.4%	1,646	34.7%
31 - BUSWAY LOCAL	339	547	-37.9%	715	-52.5%	435	-22.0%	273	24.4%
32	514	477	7.8%	772	-33.5%	501	2.5%	441	16.4%
33	423	533	-20.7%	607	-30.3%	435	-2.7%	265	59.7%
35	636	884	-28.1%	942	-32.5%	620	2.5%	587	8.4%
36	854	1,155	-26.1%	1,111	-23.1%	881	-3.1%	646	32.1%
37	1,267	1,481	-14.4%	1,739	-27.1%	1,165	8.7%	639	98.3%
38	2,462	3,515	-29.9%	4,147	-40.6%	2,531	-2.7%	1,460	68.6%
40	368	377	-2.4%	447	-17.7%	360	2.2%	196	88.4%
42	333	375	-11.4%	416	-20.1%	293	13.6%	174	91.4%
52	308	433	-28.9%	466	-33.9%	305	1.1%	281	9.8%
54	861	1,120	-23.2%	1,171	-26.5%	805	7.0%	721	19.4%
55 MARLINS SHUTTLE									
62	505	940	-46.2%	891	-43.3%	550	-8.1%	723	-30.1%
71 (*)	181	149	21.1%	162	11.4%	142	27.6%	41	340.2%
72 (*)	263	173	52.2%	265	-0.5%	280	-5.9%	75	249.8%
73	377	473	-20.2%	495	-23.7%	372	1.5%	153	147.4%
75	228	307	-25.8%	271	-15.8%	254	-10.1%	113	101.8%
77	2,345	3,129	-25.1%	2,815	-16.7%	2,402	-2.4%	1,032	127.2%
87	243	300	-19.1%	319	-24.0%	199	22.0%	133	82.3%
88	1,001	1,040	-3.8%	1,286	-22.2%	985	1.6%	389	157.4%
99	495	664	-25.4%	658	-24.7%	415	19.3%	191	159.0%

## METROBUS AVERAGE SUNDAY BOARDINGS BY ROUTE

Route <b>Sundays</b>	Average Sunday	Average Sunday	Percent Change	Average Sunday	Percent Change	Average Sunday	Percent Change	Average Sunday	Percent Change
	Apr-22	Apr-21	YOY	Feb-20	Current vs Feb-20	Mar-22	MOM	Apr-20	YO2Y
101 - A (*)	46	59	-22.1%	56	-17.6%	49	-5.7%	24	92.6%
102 - B	482	612	-21.2%	717	-32.7%	591	-18.3%	221	118.0%
103 - C		204		212				178	
104	216	143	51.4%	317	-31.9%	224	-3.5%	80	170.5%
105 - E	474	706	-32.8%	616	-23.0%	563	-15.7%	196	141.8%
107 - G	659	739	-10.8%	895	-26.4%	781	-15.6%	249	165.2%
108 - H	264	418	-36.8%	328	-19.6%	266	-0.6%	129	105.4%
110 - J	1,293	1,543	-16.2%	1,638	-21.1%	1,096	18.0%	582	122.1%
112 - L	3,480	4,660	-25.3%	4,804	-27.6%	3,218	8.1%	2,087	66.7%
113 - M	255	362	-29.6%	431	-40.9%	246	3.4%	290	-12.1%
115 (*)	85	115	-26.2%	80	6.3%	83	2.7%	70	22.3%
119 - S	6,171	6,491	-4.9%	7,141	-13.6%	5,340	15.6%	2,693	129.1%
120 - BEACH MAX	2,295	2,795	-17.9%	3,469	-33.8%	2,416	-5.0%	1,003	129.0%
135	263	270	-2.7%	349	-24.8%	197	33.6%	164	60.6%
137 - WEST DADE CONN.	643	697	-7.8%	879	-26.9%	642	0.1%	291	121.3%
150 - MIAMI BEACH AIRPORT FLYER	1,402	1,417	-1.0%	1,574	-10.9%	1,303	7.6%	450	211.9%
183	1,100	1,387	-20.7%	1,413	-22.2%	1,037	6.0%	598	83.8%
200 - CUTLER BAY LOCAL		54		59		1		29	
202 - LITTLE HAITI CONN. (*)	42	66	-36.5%	39	7.1%	53	-20.5%	67	-37.7%
207 (7st) - LITTLE HAVANA CIRC	349	614	-43.1%	796	-56.2%	514	-32.1%	370	-5.7%
208 (8st) - LITTLE HAVANA CIRC	353	778	-54.6%	911	-61.3%	370	-4.7%	459	-23.1%
210 - SKYLAKE CIRC (*)	148	104	43.2%	143	3.7%	95	55.6%	94	58.6%
241 TUTTLE LIMITED	41					46	-10.4%		
246 - NIGHT OWL	21	80	-73.7%	87	-75.9%	32	-33.9%	53	-60.4%
252 - CORAL REEF MAX	196	241	-18.8%	199	-1.4%	186	5.2%	113	73.8%
301 DADE-MONROE EXPRESS (*)	656	949	-30.9%	751	-12.7%	653	0.5%	193	240.8%
302 CARD SOUND EXPRESS (*)	49	43	13.4%	57	-14.5%	49	0.0%	19	156.6%
338 - WEEKEND EXPRESS	170	141	20.8%	252	-32.5%	147	15.9%	14	1093.0%
500	16	86	-81.2%	83	-80.4%	12	41.3%	3	490.9%
12/21 WEEKEND INTERL.	1,373	1,420	-3.3%	2,048	-32.9%	1,434	-4.2%	286	380.6%
<b>Total</b>	<b>55,483</b>	<b>68,233</b>	<b>-18.7%</b>	<b>75,428</b>	<b>-26.4%</b>	<b>54,089</b>	<b>2.6%</b>	<b>29,875</b>	<b>85.7%</b>

## METROBUS TOTAL MONTHLY BOARDINGS BY ROUTE

Route <b>Monthly Total</b>	Total Month	Total Month	Percent Change	Total Month	Percent Change	Total Month	Percent Change	Total Month	Percent Change
	Apr-22	Apr-21	YOY	Feb-20	Current vs Feb-20	Mar-22	MOM	Apr-20	YO2Y
1 (*)	4,000	6,666	-40.0%	5,558	-28.0%	4,978	-19.6%	2,878	39.0%
2	49,642	58,880	-15.7%	75,463	-34.2%	51,316	-3.3%	29,957	65.7%
3	108,626	154,419	-29.7%	146,294	-25.7%	112,499	-3.4%	47,423	129.1%
7	74,801	69,725	7.3%	86,077	-13.1%	75,216	-0.6%	20,483	265.2%
8	85,975	112,937	-23.9%	95,295	-9.8%	89,131	-3.5%	33,542	156.3%
9	100,486	162,830	-38.3%	135,924	-26.1%	103,214	-2.6%	59,611	68.6%
10	47,750	54,671	-12.7%	64,874	-26.4%	51,115	-6.6%	18,502	158.1%
11	162,594	173,025	-6.0%	187,425	-13.2%	164,996	-1.5%	74,120	119.4%
12	37,184	36,201	2.7%	55,585	-33.1%	40,458	-8.1%	25,429	46.2%
16	36,624	41,107	-10.9%	49,061	-25.4%	39,514	-7.3%	19,890	84.1%
17	63,298	82,148	-22.9%	96,715	-34.6%	65,734	-3.7%	41,385	52.9%
19	18,647	26,922	-30.7%	30,847	-39.6%	20,104	-7.2%	6,541	185.1%
21	23,964	37,267	-35.7%	36,341	-34.1%	26,333	-9.0%	24,603	-2.6%
22	65,753	77,461	-15.1%	89,404	-26.5%	67,966	-3.3%	29,773	120.8%
24 - Coral Way Limited	35,707	42,353	-15.7%	36,237	-1.5%	40,683	-12.2%	17,318	106.2%
27	128,706	155,746	-17.4%	171,282	-24.9%	135,146	-4.8%	70,795	81.8%
29 (*)	9,750	8,494	14.8%	10,684	-8.7%	10,750	-9.3%	4,279	127.9%
31 - BUSWAY LOCAL	18,864	22,016	-14.3%	29,125	-35.2%	19,555	-3.5%	9,176	105.6%
32	42,977	41,727	3.0%	56,027	-23.3%	43,328	-0.8%	25,214	70.4%
33	32,249	30,375	6.2%	40,918	-21.2%	31,007	4.0%	14,071	129.2%
34 EXPRESS	19,368	18,518	4.6%	40,159	-51.8%	20,318	-4.7%	5,334	263.1%
35	39,050	49,422	-21.0%	59,041	-33.9%	39,686	-1.6%	32,596	19.8%
36	50,860	50,205	1.3%	61,606	-17.4%	53,044	-4.1%	31,725	60.3%
37	68,961	82,360	-16.3%	82,870	-16.8%	68,718	0.4%	30,107	129.1%
38	99,391	128,461	-22.6%	167,379	-40.6%	102,058	-2.6%	66,080	50.4%
39 EXPRESS		6,084		17,853				518	
40	33,554	27,348	22.7%	40,497	-17.1%	35,036	-4.2%	12,851	161.1%
42	18,436	19,817	-7.0%	20,825	-11.5%	18,101	1.9%	7,361	150.5%
46 - LIBERTY CITY CONN. (*)	523	532	-1.7%	814	-35.7%	503	4.0%	483	8.3%
51 - FLAGLER MAX	57,046	56,388	1.2%	62,186	-8.3%	60,155	-5.2%	12,650	351.0%
52	21,051	24,454	-13.9%	30,522	-31.0%	21,219	-0.8%	13,145	60.1%
54	58,450	60,413	-3.2%	72,125	-19.0%	57,147	2.3%	42,390	37.9%
55 MARLINS SHUTTLE								0	
56 (*)	6,104	4,569	33.6%	7,071	-13.7%	6,355	-3.9%	1,577	287.1%
57	5,871	7,580	-22.5%	8,665	-32.2%	6,555	-10.4%	2,374	147.3%
62	32,337	45,418	-28.8%	46,582	-30.6%	32,933	-1.8%	32,755	-1.3%
71 (*)	12,970	11,053	17.3%	16,118	-19.5%	13,693	-5.3%	4,026	222.2%
72 (*)	14,226	11,010	29.2%	18,433	-22.8%	14,881	-4.4%	5,896	141.3%

## METROBUS TOTAL MONTHLY BOARDINGS BY ROUTE

Route <b>Monthly Total</b>	Total Month	Total Month	Percent Change	Total Month	Percent Change	Total Month	Percent Change	Total Month	Percent Change
	Apr-22	Apr-21	YOY	Feb-20	Current vs Feb-20	Mar-22	MOM	Apr-20	YO2Y
73	50,409	41,992	20.0%	48,767	3.4%	50,965	-1.1%	13,583	271.1%
75	18,297	28,807	-36.5%	31,994	-42.8%	20,814	-12.1%	10,388	76.1%
77	139,083	183,573	-24.2%	174,833	-20.4%	147,605	-5.8%	77,445	79.6%
79 STREET MAX	6,160			7,228	-14.8%	6,300	-2.2%	397	1451.6%
82 - WESTCHESTER CIRC. (*)	908	1,022	-11.2%	1,482	-38.7%	759	19.6%	460	97.4%
87	32,457	31,025	4.6%	33,273	-2.5%	31,353	3.5%	8,299	291.1%
88	42,902	50,923	-15.8%	54,772	-21.7%	44,307	-3.2%	16,552	159.2%
93 - BISCAYNE MAX	46,596	42,527	9.6%	66,684	-30.1%	50,991	-8.6%	19,391	140.3%
95 EXPRESS	16,838	9,199	83.0%	33,796	-50.2%	18,317	-8.1%	2,294	634.0%
99	30,632	34,246	-10.6%	36,325	-15.7%	29,891	2.5%	11,335	170.2%
101 - A (*)	4,337	3,613	20.0%	4,114	5.4%	4,997	-13.2%	947	358.0%
102 - B	33,299	31,320	6.3%	42,683	-22.0%	36,533	-8.9%	11,216	196.9%
103 - C		7,497		11,682				6,938	
104	13,530	9,329	45.0%	20,351	-33.5%	14,170	-4.5%	3,292	311.0%
105 - E	24,940	36,848	-32.3%	31,302	-20.3%	26,962	-7.5%	11,536	116.2%
107 - G	31,684	33,096	-4.3%	43,178	-26.6%	34,085	-7.0%	10,160	211.9%
108 - H	9,877	14,484	-31.8%	12,624	-21.8%	10,379	-4.8%	4,173	136.7%
110 - J	58,722	75,244	-22.0%	66,481	-11.7%	59,718	-1.7%	27,992	109.8%
112 - L	153,649	204,839	-25.0%	200,268	-23.3%	162,223	-5.3%	103,215	48.9%
113 - M	13,090	15,104	-13.3%	21,548	-39.3%	14,187	-7.7%	15,016	-12.8%
115 (*)	4,204	5,573	-24.6%	4,334	-3.0%	3,979	5.7%	3,102	35.5%
119 - S	199,050	260,832	-23.7%	242,257	-17.8%	205,580	-3.2%	100,751	97.6%
120 - BEACH MAX	132,207	142,267	-7.1%	170,942	-22.7%	136,107	-2.9%	55,021	140.3%
132 TRI-RAIL (DORAL)	17	411	-95.9%	312	-94.6%	78	-78.2%	206	-91.7%
135 (*)	22,298	22,140	0.7%	32,067	-30.5%	20,875	6.8%	10,933	104.0%
136	1,905	1,620	17.6%	2,524	-24.5%	2,499	-23.8%	447	326.2%
137 - WEST DADE CONN.	35,606	32,486	9.6%	41,167	-13.5%	35,062	1.6%	11,106	220.6%
150 - MIAMI BEACH AIRPORT FLYER	43,449	40,579	7.1%	51,651	-15.9%	42,460	2.3%	13,458	222.8%
155 - BISCAYNE GARDENS CIRCULATOR (*)	789	729	8.2%	881	-10.4%	836	-5.6%	524	50.6%
175 - NW MIAMI-DADE EXPRESS				661					
183	50,797	75,072	-32.3%	77,570	-34.5%	58,890	-13.7%	25,916	96.0%
195 EXPRESS - BROWARD BLVD				7,441					
196 EXPRESS - SHERIDAN ST				7,658					
200 - CUTLER BAY LOCAL	81	3,513	-97.7%	3,984	-98.0%	1,237	-93.5%	1,476	-94.5%
202 - LITTLE HAITI CONN. (*)	2,558	3,162	-19.1%	3,200	-20.1%	2,878	-11.1%	2,702	-5.3%
204 KILLIAN KAT	9,922			21,418	-53.7%	9,933	-0.1%	986	906.3%



## METROBUS TOTAL MONTHLY BOARDINGS BY ROUTE

Route <b>Monthly Total</b>	Total Month	Total Month	Percent Change	Total Month	Percent Change	Total Month	Percent Change	Total Month	Percent Change
	Apr-22	Apr-21	YOY	Feb-20	Current vs Feb-20	Mar-22	MOM	Apr-20	YO2Y
207 (7st) - LITTLE HAVANA CIRC	28,115	22,534	24.8%	38,127	-26.3%	28,366	-0.9%	17,469	60.9%
208 (8st) - LITTLE HAVANA CIRC	26,396	27,047	-2.4%	35,018	-24.6%	24,132	9.4%	17,565	50.3%
210 - SKYLAKE CIRC (*)	8,349	8,662	-3.6%	7,033	18.7%	7,217	15.7%	3,855	116.6%
211 - OVERTOWN CIRC. (*)	1,812	800	126.5%	1,159	56.3%	1,935	-6.4%	1,296	39.8%
212 - SWEETWATER CIRC. (*)	417	406	2.7%	295	41.4%	489	-14.7%	173	141.0%
217 - BUNCHE PARK CIRC (*)	1,614	1,475	9.4%	1,949	-17.2%	1,652	-2.3%	1,091	47.9%
238 EAST/WEST CONN.	8,347	7,614	9.6%	8,987	-7.1%	7,548	10.6%	996	738.1%
241 TUTTLE LIMITED	2,009					2,193	-8.4%		
246 - NIGHT OWL	972	2,748	-64.6%	2,641	-63.2%	1,159	-16.1%	490	98.4%
248 - PRINCETON CIRCULATOR (*)	1,789	1,652	8.3%	2,690	-33.5%	1,652	8.3%	1,262	41.8%
252 - CORAL REEF MAX	14,949	13,728	8.9%	19,325	-22.6%	15,579	-4.0%	4,457	235.4%
254 - BROWNSVILLE CIRC. (*)	119	359	-66.9%	384	-69.0%	131	-9.2%	626	-81.0%
267 - LUDLAM LIMITED (*)	2,638	2,312	14.1%	2,978	-11.4%	2,832	-6.9%	1,084	143.4%
272 SUNSET KAT (*)	6,595	5,834	13.0%	11,004	-40.1%	7,060	-6.6%	2,905	127.0%
277 - 7th AVENUE MAX	8,945	11,915	-24.9%	13,669	-34.6%	10,616	-15.7%	6,285	42.3%
286 - NORTH POINTE CIRC. (*)	1,532	963	59.1%	2,145	-28.6%	1,519	0.9%	363	322.0%
287 - SAGA BAY MAX	4,205	3,829	9.8%	7,160	-41.3%	4,838	-13.1%	1,984	111.9%
288 - KENDALL CRUISER	8,897			15,249	-41.7%	9,054	-1.7%	1,225	626.3%
295 EXPRESS - BROWARD BLVD - CIVIC CENTER				4,668					
296 EXPRESS - SHERIDAN ST - CIVIC CENTER				4,297					
297-27th AVENUE ORANGE MAX	16,739	19,827	-15.6%	27,125	-38.3%	18,595	-10.0%	9,980	67.7%
301 DADE-MONROE EXPRESS (*)	21,993	27,315	-19.5%	23,838	-7.7%	23,008	-4.4%	7,512	192.8%
302 CARD SOUND EXPRESS (*)	2,015	2,226	-9.5%	2,236	-9.9%	2,077	-3.0%	754	167.2%
338 - WEEKEND EXPRESS	1,345	1,126	19.4%	2,191	-38.6%	889	51.3%	79	1602.5%
344 (*)	1,093	1,756	-37.8%	1,919	-43.0%	1,031	6.0%	833	31.2%
500	415	2,086	-80.1%	2,301	-82.0%	312	33.0%	53	683.0%
836 EXPRESS	3,087	1,827	69.0%			3,152	-2.1%		
12/21 WEEKEND INTERL.	14,984	14,913	0.5%	20,830	-28.1%	12,697	18.0%	3,511	326.8%
GREEN HILLS SHUTTLE (*)	20	23	-13.0%	36	-44.4%	24	-16.7%	63	-68.3%
KINGS CREEK SHUTTLE (*)	73	33	121.2%	52	40.4%	70	4.3%	18	305.6%
SIERRALAKES SHUTTLE (*)	48	110	-56.4%	180	-73.3%	58	-17.2%	77	-37.7%
ROBERT SHARP SHUTTLE (*)	70	95	-26.3%	38	84.2%	91	-23.1%	38	84.2%
AHEPA SHUTTLE (*)	56	81	-30.9%	83	-32.5%	89	-37.1%	98	-42.9%
FEDERATION GARDENS SHUTTLE (*)	71	78	-9.0%	142	-50.0%	82	-13.4%	59	20.3%
<b>Total</b>	<b>3,105,797</b>	<b>3,625,048</b>	<b>-14.3%</b>	<b>4,123,083</b>	<b>-24.7%</b>	<b>3,218,562</b>	<b>-3.5%</b>	<b>1,544,316</b>	<b>101.1%</b>

## YEAR-OVER-YEAR BUS RIDERSHIP BY ROUTE SERVICE TYPE

Boardings by Service Type and Route	Average Weekday	Average Weekday	Percent Change	Average Saturday	Average Saturday	Percent Change	Average Sunday	Average Sunday	Percent Change	Total Monthly	Total Monthly	Percent Change
	Apr-22	Apr-21	22 vs 21	Apr-22	Apr-21	22 vs 21	Apr-22	Apr-21	22 vs 21	Apr-22	Apr-21	22 vs 21
<b>Directly Operated Express Routes (1)</b>												
34 EXPRESS	922	842	9.6%							19,368	18,518	4.6%
39 EXPRESS		277									6,084	
95-EXPRESS	802	418	91.8%							16,838	9,199	83.0%
150-MIAMI BEACH AIRPORT FLYER	1,474	1,332	10.7%	1,377	1,405	-2.0%	1,402	1,417	-1.0%	43,449	40,579	7.1%
175 - NW MIAMI-DADE EXPRESS												
195 EXPRESS - BROWARD BLVD												
196 EXPRESS - SHERIDAN ST												
295 EXPRESS - BROWARD BLVD - CIVIC CENTER												
296 EXPRESS - SHERIDAN ST - CIVIC CENTER												
204 KAT-KILLIAN	472									9,922		
288 KENDALL CRUISER	424									8,897		
338 - WEEKEND EXPRESS				166	188	-11.4%	170	141	20.8%	1,345	1,126	19.4%
836 EXPRESS	147	83								3,087	1,827	69.0%
<b>Subtotal Express Routes</b>	<b>4,241</b>	<b>2,951</b>	<b>43.7%</b>	<b>1,543</b>	<b>1,593</b>	<b>-3.1%</b>	<b>1,572</b>	<b>1,557</b>	<b>0.9%</b>	<b>102,906</b>	<b>77,333</b>	<b>33.1%</b>
<b>Percentage of All Bus Routes</b>	<b>3.5%</b>	<b>2.2%</b>		<b>2.2%</b>	<b>1.8%</b>		<b>2.8%</b>	<b>2.3%</b>		<b>3.3%</b>	<b>2.1%</b>	
<b>Contracted Routes</b>												
1	130	228	-43.0%	131	231	-43.2%	153	180	-14.7%	4,000	6,666	-40.0%
29	464	386	20.3%							9,750	8,494	14.8%
35												
46 - LIBERTY CITY CONN.	25	24	3.0%							523	532	-1.7%
56	291	208	40.0%							6,104	4,569	33.6%
71	538	436	23.4%	190	215	-11.9%	181	149	21.1%	12,970	11,053	17.3%
72	555	427	30.1%	303	232	30.4%	263	173	52.2%	14,226	11,010	29.2%
82 - WESTCHESTER CIRC	34	41	-17.6%	40	30	31.6%				908	1,022	-11.2%
101 - A	183	139	31.6%	63	80	-21.5%	46	59	-22.1%	4,337	3,613	20.0%
115	159	204	-22.0%	103	154	-33.1%	85	115	-26.2%	4,204	5,573	-24.6%
155 - BISCAYNE GARDENS CIRC	38	33	13.4%							789	729	8.2%
202 - LITTLE HAITI CONN.	104	120	-13.2%	41	65	-36.9%	42	66	-36.5%	2,558	3,162	-19.1%
210 - SKYLAKE CIRC	331	351	-5.8%	161	130	24.6%	148	104	43.2%	8,349	8,662	-3.6%
211-OVERTOWN CIRC	86	36	137.3%							1,812	800	126.5%
212-SWEETWATER CIRC	20	18	7.6%							417	406	2.7%
217 - BUNCHE PARK CIRC	77	67	14.6%							1,614	1,475	9.4%
248 - PRINCETON CIRCULATOR	85	75	13.4%							1,789	1,652	8.3%
254-BROWNSVILLE CIRC	6	16	-65.3%							119	359	-66.9%
286-NORTH POINTE CIRC	60	38	59.0%	55	34	62.9%				1,532	963	59.1%
344	52	80	-34.8%							1,093	1,756	-37.8%
<b>Subtotal Contracted Reg. &amp; Circ. Routes</b>	<b>3,237</b>	<b>2,929</b>	<b>10.5%</b>	<b>1,087</b>	<b>1,172</b>	<b>-7.2%</b>	<b>918</b>	<b>845</b>	<b>8.6%</b>	<b>77,094</b>	<b>72,496</b>	<b>6.3%</b>
<b>Percentage of All Bus Routes</b>	<b>2.7%</b>	<b>2.1%</b>		<b>1.6%</b>	<b>1.3%</b>		<b>1.7%</b>	<b>1.2%</b>		<b>2.5%</b>	<b>2.0%</b>	

(1) Several express routes were suspended beginning at the end of March 2020, due to the SARS-CoV-2 pandemic, while other routes had alignment and schedule modifications made to them, in an ongoing effort to optimize service delivery..

## YEAR-OVER-YEAR BUS RIDERSHIP BY ROUTE SERVICE TYPE

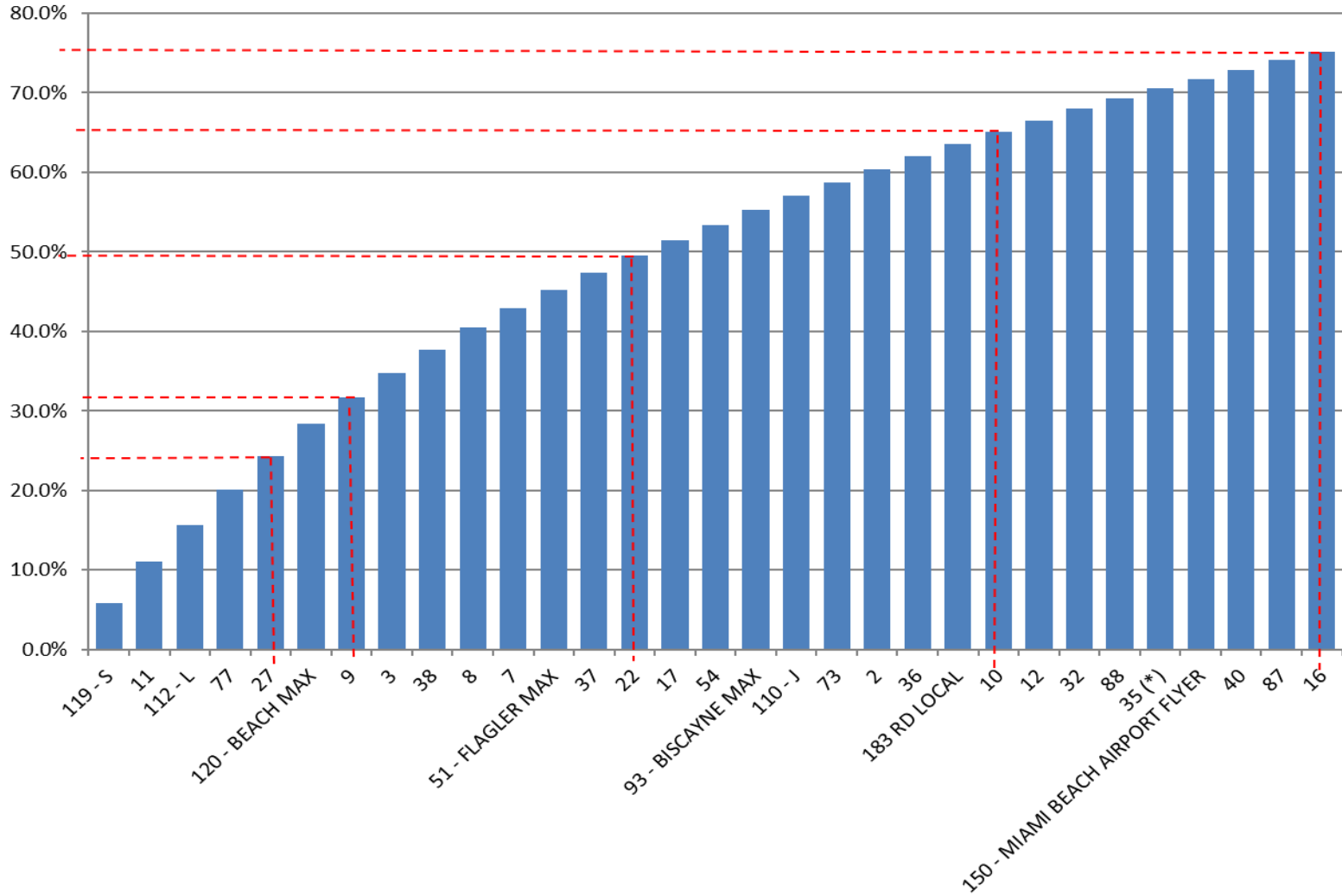
Boardings by Service Type and Route	Average Weekday	Average Weekday	Percent Change	Average Saturday	Average Saturday	Percent Change	Average Sunday	Average Sunday	Percent Change	Total Monthly	Total Monthly	Percent Change
	Apr-22	Apr-21	22 vs 21	Apr-22	Apr-21	22 vs 21	Apr-22	Apr-21	22 vs 21	Apr-22	Apr-21	22 vs 21
<b>Contracted Express Routes</b>												
272 SUNSET-KAT	314	265	18.4%							6,595	5,834	13.0%
301-DADE MONROE EXPRESS	760	917	-17.1%	682	837	-18.4%	656	949	-30.9%	21,993	27,315	-19.5%
302-CARD SOUND EXPRESS	74	78	-4.4%	52	87	-39.7%	49	43	13.4%	2,015	2,226	-9.5%
<b>Subtotal Contracted Express Routes</b>	<b>1,148</b>	<b>1,260</b>	<b>-8.9%</b>	<b>735</b>	<b>923</b>	<b>-20.4%</b>	<b>705</b>	<b>992</b>	<b>-29.0%</b>	<b>30,603</b>	<b>35,375</b>	<b>-13.5%</b>
<b>Percentage of All Bus Routes</b>	<b>1.0%</b>	<b>0.9%</b>		<b>1.0%</b>	<b>1.0%</b>		<b>1.3%</b>	<b>1.5%</b>		<b>1.0%</b>	<b>1.0%</b>	
<b>Limited Stop Routes</b>												
24-CORAL WAY LIMITED	1,276	1,534	-16.8%	1,083	1,300	-16.6%	872	852	2.3%	35,707	42,353	-15.7%
51-FLAGLER MAX	2,716	2,563	6.0%							57,046	56,388	1.2%
79 STREET MAX	293									6,160		
93 - BISCAYNE MAX	2,219	1,933	14.8%							46,596	42,527	9.6%
120 - BEACH MAX	5,016	5,277	-5.0%	3,538	3,746	-5.6%	2,295	2,795	-17.9%	132,207	142,267	-7.1%
241 TUTTLE LIMITED												
252-CORAL REEF MAX	621	534	16.3%	224	252	-11.1%	196	241	-18.8%	14,949	13,728	8.9%
267-LUDLAM LIMITED (contracted)	126	105	19.5%							2,638	2,312	14.1%
277-7TH AVENUE MAX	426	542	-21.4%							8,945	11,915	-24.9%
287-SAGA BAY MAX	200	174	15.0%							4,205	3,829	9.8%
297-27th AVENUE ORANGE MAX	797	901	-11.6%							16,739	19,827	-15.6%
<b>Subtotal Limited Stop Routes</b>	<b>13,691</b>	<b>13,564</b>	<b>0.9%</b>	<b>4,845</b>	<b>5,298</b>	<b>-8.5%</b>	<b>3,363</b>	<b>3,888</b>	<b>-13.5%</b>	<b>325,192</b>	<b>335,146</b>	<b>-3.0%</b>
<b>Percentage of All Bus Routes</b>	<b>11.3%</b>	<b>10.0%</b>		<b>6.9%</b>	<b>6.0%</b>		<b>6.1%</b>	<b>5.7%</b>		<b>10.5%</b>	<b>9.2%</b>	
<b>Directly Operated Free Routes</b>												
132 -TRI-RAIL DORAL	2	21	-91.7%							17	411	-95.9%
200-CUTLER BAY LOCAL	2	143	-98.5%	28	108	-74.5%		54		81	3,513	-97.7%
<b>Subtotal Free Directly Operated Routes</b>	<b>4</b>	<b>164</b>	<b>-97.6%</b>	<b>28</b>	<b>108</b>	<b>-74.5%</b>	<b>0</b>	<b>54</b>	<b>-100.0%</b>	<b>98</b>	<b>3,924</b>	<b>-97.5%</b>
<b>Percentage of All Bus Routes</b>	<b>0.0%</b>	<b>0.0%</b>								<b>0.0%</b>	<b>0.0%</b>	
<b>Shuttles</b>												
55-MARLINS SHUTTLE												
<b>Percentage of All Bus Routes</b>												
<b>Contractor-Operated Lifeline Routes</b>												
GREEN HILLS SHUTTLE	5	6	-13.0%							20	23	-13.0%
KINGS CREEK SHUTTLE	18	7	176.5%							73	33	121.2%
SIERRA LAKES SHUTTLE	16	22	-27.3%							48	110	-56.4%
ROBERT SHARP SHUTTLE	18	24	-26.3%							70	95	-26.3%
AHEPA SHUTTLE	14	16	-13.6%							56	81	-30.9%
FEDERATION GARDENS SHUTTLE				18	20	-9.0%				71	78	-9.0%
<b>Subtotal Contractor-Operated Lifeline Routes</b>	<b>71</b>	<b>74</b>	<b>-4.8%</b>	<b>18</b>	<b>20</b>	<b>-9.0%</b>				<b>338</b>	<b>420</b>	<b>-19.5%</b>
<b>Percentage of All Bus Routes</b>	<b>0.1%</b>	<b>0.1%</b>		<b>0.0%</b>	<b>0.0%</b>					<b>0.0%</b>	<b>0.0%</b>	
<b>Other Circulator Route</b>												
200-CUTLER BAY LOCAL	2	143	-98.5%	28	108	-74.5%		54	-100.0%	81	3,513	-97.7%
<b>Percentage of All Bus Routes</b>	<b>0.0%</b>	<b>0.1%</b>		<b>0.0%</b>	<b>0.1%</b>		<b>0.0%</b>	<b>0.1%</b>		<b>0.0%</b>	<b>0.1%</b>	
<b>All Other (Regular) Routes</b>	<b>98,330</b>	<b>115,341</b>	<b>-14.7%</b>	<b>61,787</b>	<b>79,818</b>	<b>-22.6%</b>	<b>48,926</b>	<b>60,898</b>	<b>-19.7%</b>	<b>2,569,566</b>	<b>3,100,354</b>	<b>-17.1%</b>
<b>Percentage of All Bus Routes</b>	<b>81.5%</b>	<b>84.6%</b>		<b>88.2%</b>	<b>89.8%</b>		<b>88.2%</b>	<b>89.2%</b>		<b>82.7%</b>	<b>85.5%</b>	
<b>Total Bus System</b>	<b>120,722</b>	<b>136,282</b>	<b>-11.4%</b>	<b>70,043</b>	<b>88,930</b>	<b>-21.2%</b>	<b>55,483</b>	<b>68,233</b>	<b>-18.7%</b>	<b>3,105,797</b>	<b>3,625,048</b>	<b>-14.3%</b>

## Bus Routes as Ranked by Percentage of Average Weekday Ridership

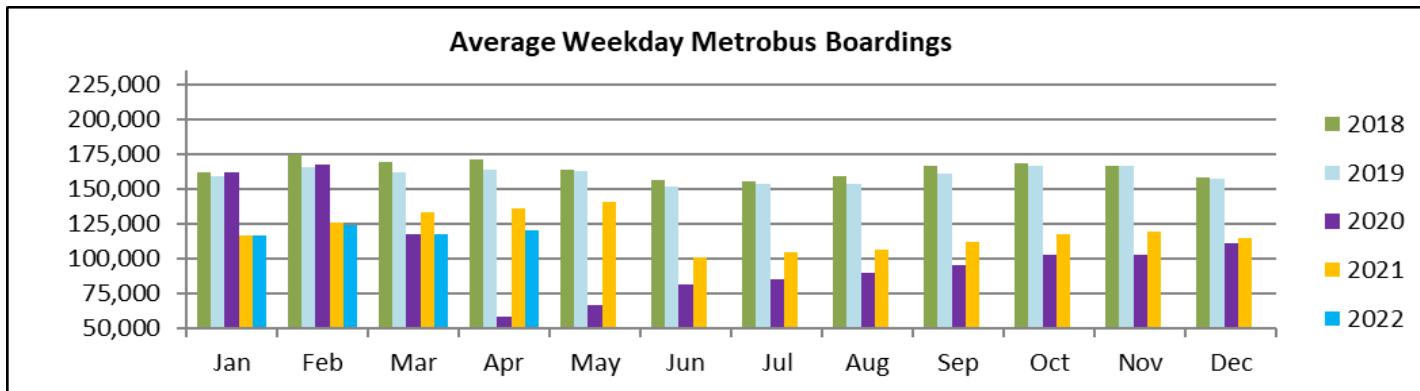
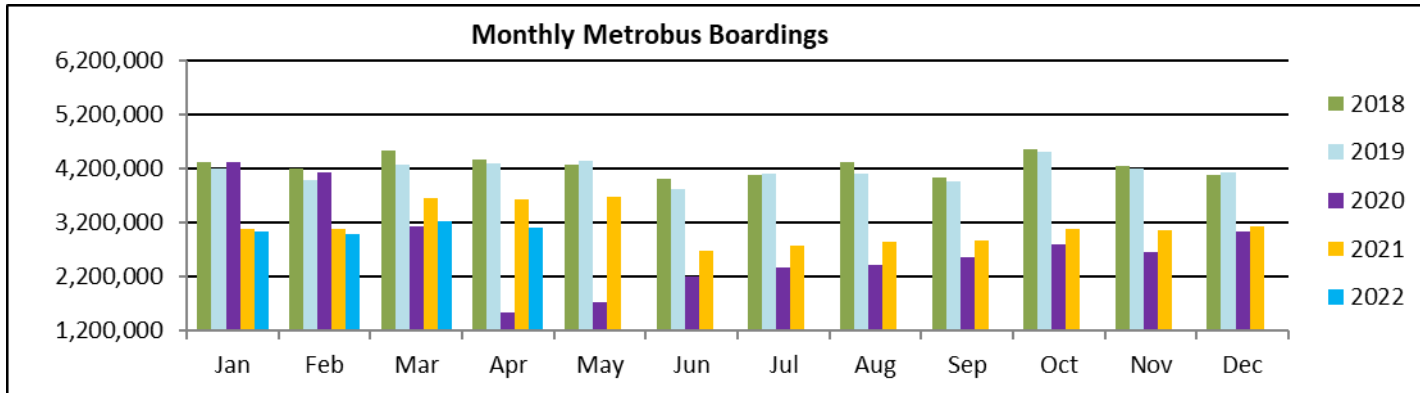
Rank	Route	Average Weekday	Percent Share	Cumul Pct Share	Rank	Route	Average Weekday	Percent Share	Cumul Pct Share	Rank	Route	Average Weekday	Percent Share	Cumul Pct Share	
1	119	7,034	5.8%	5.8%	36	62	1,234	1.0%	80.6%	71	115	159	0.1%	98.9%	
2	11	6,257	5.2%	11.0%	37	107	1,231	1.0%	81.6%	72	836	147	0.1%	99.0%	
3	112	5,636	4.7%	15.7%	38	99	1,195	1.0%	82.6%	73	1	130	0.1%	99.1%	
4	77	5,344	4.4%	20.1%	39	21	1,141	0.9%	83.5%	74	267	126	0.1%	99.2%	
5	27	5,053	4.2%	24.3%	40	207	1,101	0.9%	84.4%	75	202	104	0.1%	99.3%	
6	120	5,016	4.2%	28.4%	41	208	1,010	0.8%	85.3%	76	136	91	0.1%	99.4%	
7	9	3,911	3.2%	31.7%	42	105	965	0.8%	86.1%	77	211	86	0.1%	99.5%	
8	3	3,698	3.1%	34.7%	43	135	941	0.8%	86.9%	78	248	85	0.1%	99.5%	
9	38	3,577	3.0%	37.7%	44	34	922	0.8%	87.6%	79	217	77	0.1%	99.6%	
10	8	3,358	2.8%	40.5%	45	19	888	0.7%	88.4%	80	302	74	0.1%	99.7%	
11	7	2,960	2.5%	42.9%	46	52	846	0.7%	89.1%	81	241	69	0.1%	99.7%	
12	51	2,716	2.3%	45.2%	47	95	802	0.7%	89.7%	82	286	60	0.0%	99.8%	
13	37	2,690	2.2%	47.4%	48	297	797	0.7%	90.4%	83	344	52	0.0%	99.8%	
14	22	2,506	2.1%	49.5%	49	75	770	0.6%	91.0%	84	155	38	0.0%	99.8%	
15	17	2,413	2.0%	51.5%	50	301	760	0.6%	91.6%	85	82	34	0.0%	99.9%	
16	54	2,292	1.9%	53.4%	51	42	708	0.6%	92.2%	86	246	29	0.0%	99.9%	
17	93	2,219	1.8%	55.2%	52	31	697	0.6%	92.8%	87	46	25	0.0%	99.9%	
18	110	2,155	1.8%	57.0%	53	252	621	0.5%	93.3%	88	212	20	0.0%	99.9%	
19	73	2,098	1.7%	58.8%	54	72	555	0.5%	93.8%	89	KC	18	0.0%	99.9%	
20	2	1,971	1.6%	60.4%	55	71	538	0.4%	94.2%	90	RS	18	0.0%	100.0%	
21	36	1,970	1.6%	62.0%	56	104	532	0.4%	94.7%	91	SL	16	0.0%	100.0%	
22	183	1,891	1.6%	63.6%	57	113	501	0.4%	95.1%	92	AS	14	0.0%	100.0%	
23	10	1,775	1.5%	65.1%	58	204	472	0.4%	95.5%	93	500	14	0.0%	100.0%	
24	12	1,771	1.5%	66.5%	59	29	464	0.4%	95.9%	94	254	6	0.0%	100.0%	
25	32	1,742	1.4%	68.0%	60	277	426	0.4%	96.2%	95	GH	5	0.0%	100.0%	
26	88	1,555	1.3%	69.3%	61	288	424	0.4%	96.6%	96	200	2	0.0%	100.0%	
27	35	1,519	1.3%	70.5%	62	238	397	0.3%	96.9%	97	132	2	0.0%	100.0%	
28	150	1,474	1.2%	71.7%	63	108	358	0.3%	97.2%						
29	40	1,414	1.2%	72.9%	64	210	331	0.3%	97.5%						
30	87	1,400	1.2%	74.1%	65	272	314	0.3%	97.7%						
31	16	1,369	1.1%	75.2%	66	79	293	0.2%	98.0%						
32	102	1,367	1.1%	76.3%	67	56	291	0.2%	98.2%						
33	137	1,341	1.1%	77.4%	68	57	280	0.2%	98.4%						
34	24	1,276	1.1%	78.5%	69	287	200	0.2%	98.6%						
35	33	1,265	1.0%	79.5%	70	101	183	0.2%	98.8%						
												entirely contracted			
												<b>Total Boardings</b>	<b>120,722</b>	<b>100.0%</b>	<b>100.0%</b>

- (1) Average weekday ridership rounded to the nearest unit.  
 (2) Includes the five Lifeline Shuttles that operate on weekdays: Ahepa, Green Hills, Kings Creek, Robert Sharp and Sierra Lakes.

**Bus - Cumulative Percentage Average Weekday Ridership Share  
Top 1/4, 1/3, 1/2, 2/3 and 3/4 of Routes**



## TOTAL MONTHLY AND AVERAGE WEEKDAY RIDERSHIP YEAR OVER YEAR COMPARISON CHARTS – METROBUS

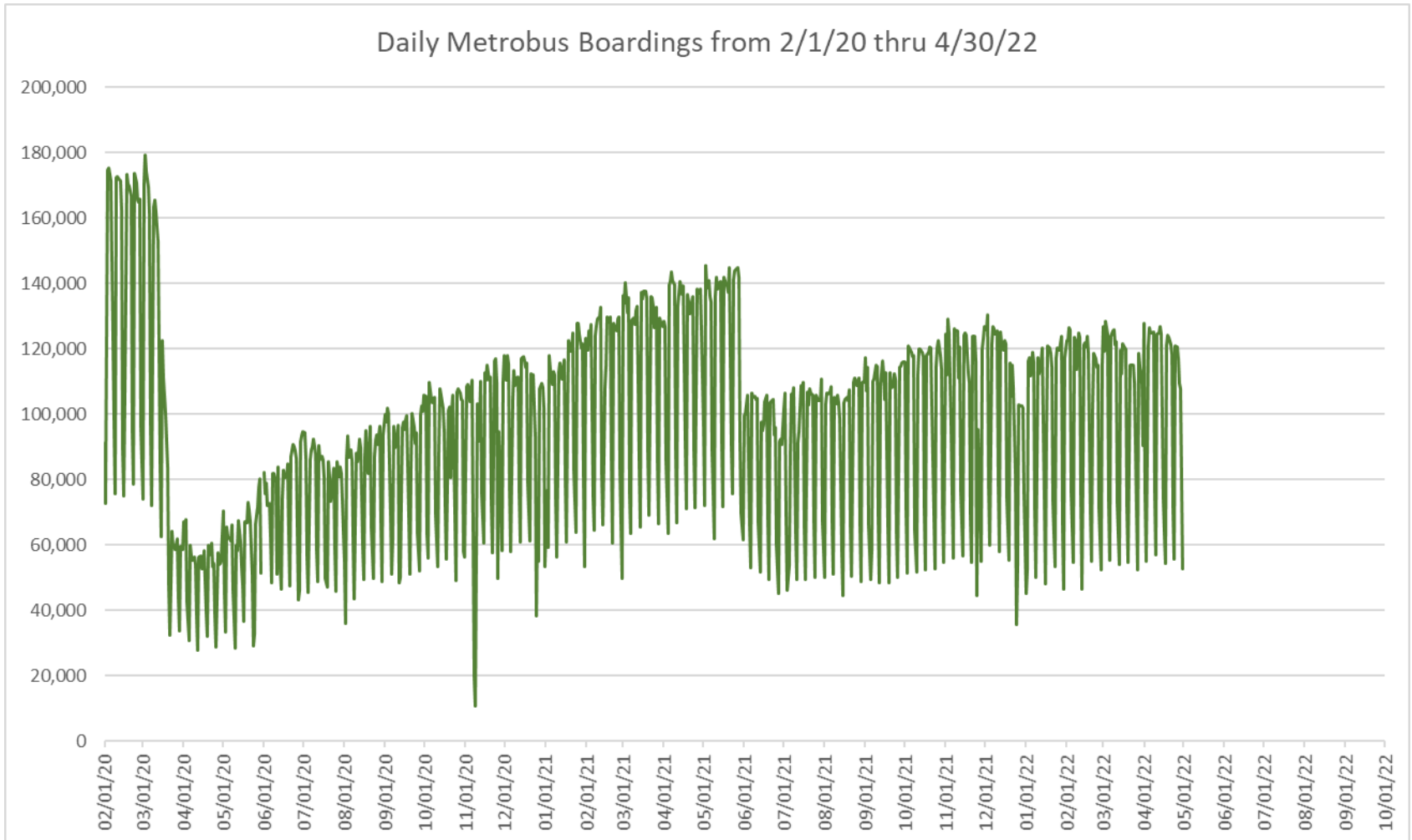


**“TOP 5 / BOTTOM 5” BUS ROUTES AVERAGE WEEKDAY RIDERSHIP PERFORMANCE  
YEAR OVER YEAR COMPARISONS**

<b>Route</b>	<b>Apr-22</b>	<b>Apr-21</b>	<b>Absolute Delta (1)</b>	<b>Percent Delta (2)</b>
<b>73</b>	2,098	1,636	462	28.2%
<b>95 EXPRESS</b>	802	418	384	91.8%
<b>40</b>	1,414	1,055	358	34.0%
<b>207 (7st) - LITTLE HAVANA CIRC</b>	1,101	770	330	42.9%
<b>7</b>	2,960	2,664	297	11.1%
<b>9</b>	3,911	6,420	-2,509	-39.1%
<b>119 - S</b>	7,034	9,360	-2,326	-24.9%
<b>112 - L</b>	5,636	7,542	-1,906	-25.3%
<b>77</b>	5,344	7,042	-1,698	-24.1%
<b>3</b>	3,698	5,347	-1,649	-30.8%

- (1) Averages rounded to the nearest boarding, data as reported by NFS and/or APC system, depending on year; Lifelines excluded.  
(2) As a result of the SARS-CoV-2 pandemic, rides were fare-free beginning March 22, 2020; many bus routes continued reporting YOY gains in April 2022, since April 2021 showed clear reduction effects on ridership from the SARS-CoV-2 pandemic. Fares were reinstated June 1, 2021, and ridership data from the farebox system rather than the automatic passenger counter system is utilized from that date going forward.

## DAILY METROBUS RIDERSHIP SINCE FEBRUARY 1, 2020



- (1) National Emergency was declared on 3/13/20 as a result of the SARS-CoV-2 pandemic.
- (2) There was no Metrobus, Metrorail and Metromover service on 5/31/20, as a safety precaution.
- (3) The dip at the start of the second week of November 2020 is due to Hurricane Eta.
- (4) The reduction seen beginning 6/1/21 is partly due to the resumption of fares and partly the result of resuming reporting Cubic farebox data rather than bus APC counts.
- (5) Periodic (weekly) variations are prominent, since weekday ridership is almost always significantly higher than weekend or holiday ridership.



## METROBUS PARKING PATRONAGE SUMMARY April 2022

PARK-RIDE LOT	ACTUAL AVAILABLE SPACES	ACTUAL OCCUPANCY	PERCENT OCCUPANCY
Transitway / SW 152nd St	200	132	66%
Transitway / SW 168th St (Closed for construction January 2022)	149	0	0%
Transitway / SW 200th Street (effective February 2020)	100	32	32%
Transitway / SW 112 Ave (Target)	450	142	32%
Transitway / SW 244th St	95	58	61%
Transitway / SW 296th St	139	41	29%
Transitway / SW 344th St	248	142	57%
Coral Reef Drive 117/ Turnpike	95	77	81%
Golden Glades- West Lot	2,150	285	13%
Hammocks Town Center (SW 152 Ave / SW 104 St)	50	18	36%
Kendall Dr./SW 127th Ave	161	19	12%
West Kendall Transit Term (Kendall Dr/ SW162 Ave)	40	14	35%
NW 7th Avenue Transit Village (NW 7 Ave / NW 62 St)	25	24	96%
Miami Gardens Dr. / NW 73rd Ave	136	0	0%
Dolphin Station (effective Mar 2020)	348	42	12%
I-75 / Miami Gardens Dr (effective June 2019)	298	0	0%
<b>TOTAL</b>	<b>4,684</b>	<b>1,026</b>	<b>22%</b>

*Note: some park-ride lots are joint-use and the number of park-ride vehicles may exceed the number of spaces allocated.*

# Metrorail



April 2022

## METRORAIL AVERAGE WEEKDAY BOARDINGS BY STATION (†)

<b>Weekdays</b>	<b>Average Weekday</b>	<b>Average Weekday</b>	<b>Percent Change</b>	<b>Average Weekday</b>	<b>Percent Change</b>	<b>Average Weekday</b>	<b>Percent Change</b>	<b>Average Weekday</b>	<b>Percent Change</b>
<b>STATIONS</b>	<b>Apr-22</b>	<b>Apr-21</b>	<b>YOY</b>	<b>Feb-20</b>	<b>Current vs Feb-20</b>	<b>Mar-22</b>	<b>MOM</b>	<b>Apr-20</b>	<b>YO2Y</b>
ALLAPATTAH	1,390	1,313	5.9%	1,942	-28.4%	1,322	5.2%	598	132.7%
BRICKELL	4,330	4,386	-1.3%	6,529	-33.7%	4,252	1.8%	758	471.5%
BROWNSVILLE	615	701	-12.3%	862	-28.6%	590	4.3%	327	88.2%
CIVIC CENTER	3,433	2,849	20.5%	6,143	-44.1%	3,365	2.0%	219	1467.3%
COCONUT GROVE	1,307	1,102	18.6%	1,795	-27.2%	1,292	1.2%	472	176.8%
CULMER	885	899	-1.5%	1,392	-36.4%	867	2.1%	954	-7.2%
DADELAND NORTH	3,478	3,696	-5.9%	5,926	-41.3%	3,350	3.8%	492	607.4%
DADELAND SOUTH	3,732	3,310	12.8%	7,150	-47.8%	3,651	2.2%	1,212	207.9%
DOUGLAS ROAD	2,563			3,624	-29.3%	2,549	0.6%	644	297.7%
DR. MARTIN LUTHER KING, JR.	764	757	0.9%	1,157	-34.0%	770	-0.9%	385	98.4%
EARLINGTON HEIGHTS	1,149	1,021	12.5%	1,662	-30.8%	1,106	3.9%	563	104.0%
GOVERNMENT CENTER	5,812	3,940	47.5%	10,557	-44.9%	5,730	1.4%	912	537.5%
HIALEAH	978	729	34.2%	1,253	-21.9%	951	2.8%	251	289.7%
MIAMI INTERNATIONAL AIRPORT	1,120	765	46.5%	1,711	-34.5%	1,134	-1.2%	237	371.6%
NORTHSIDE	1,121	1,097	2.1%	1,476	-24.0%	1,060	5.8%	467	139.9%
OKEECHOBEE	736	694	6.1%	1,164	-36.8%	716	2.7%	239	207.7%
OVERTOWN / ARENA	1,294	850	52.2%	2,274	-43.1%	1,242	4.2%	250	417.6%
PALMETTO	1,048	817	28.3%	1,543	-32.1%	1,014	3.3%	226	363.7%
SANTA CLARA	575	536	7.3%	812	-29.2%	547	5.1%	185	210.9%
SOUTH MIAMI	1,760	1,202	46.4%	3,015	-41.6%	1,712	2.8%	368	378.6%
TRI-RAIL	898	805	11.6%	1,207	-25.6%	897	0.1%	460	95.1%
UNIVERSITY	1,597	929	71.9%	2,784	-42.6%	1,507	6.0%	226	607.3%
VIZCAYA	987	804	22.7%	1,390	-28.9%	942	4.8%	279	254.0%
<b>TOTAL</b>	<b>41,572</b>	<b>33,203</b>	<b>25.2%</b>	<b>67,367</b>	<b>-38.3%</b>	<b>40,566</b>	<b>2.5%</b>	<b>10,724</b>	<b>287.7%</b>

(†) In this table and those which follow, "YOY" stands for "year-over-year", "MOM" for "month-over-month" and "YO2Y" for "year over two years", i.e., current month vs 12 months prior, one month prior and 24 months prior, respectively.

(\*) Due to effects from the SARS-CoV-2 pandemic; rides were fare-free beginning March 22, 2020; fares were reinstated on June 1, 2021, in part accounting for the drop in ridership from May 2021.

## METRORAIL AVERAGE SATURDAY BOARDINGS BY STATION

<b>Saturdays</b>	Average Saturday	Average Saturday	Percent Change	Average Saturday	Percent Change	Average Saturday	Percent Change	Average Saturday	Percent Change
STATIONS	Apr-22	Apr-21	YOY	Feb-20	Current vs Feb-20	Mar-22	MOM	Apr-20	YO2Y
ALLAPATTAH	837	835	0.2%	1,051	-20.4%	817	2.4%	376	122.6%
BRICKELL	2,334	2,823	-17.3%	2,811	-17.0%	2,416	-3.4%	442	428.0%
BROWNSVILLE	382	479	-20.2%	520	-26.4%	379	1.0%	138	176.6%
CIVIC CENTER	637	685	-7.1%	959	-33.6%	692	-8.0%	164	289.4%
COCONUT GROVE	748	691	8.2%	928	-19.4%	798	-6.3%	311	140.6%
CULMER	454	558	-18.6%	721	-37.0%	491	-7.5%	338	34.4%
DADELAND NORTH	1,351	1,885	-28.3%	1,994	-32.2%	1,515	-10.8%	410	230.0%
DADELAND SOUTH	1,646	2,030	-18.9%	2,625	-37.3%	1,758	-6.4%	434	279.6%
DOUGLAS ROAD	1,175			1,319	-11.0%	1,312	-10.5%	509	130.7%
DR. MARTIN LUTHER KING, JR.	407	535	-23.9%	625	-34.8%	422	-3.5%	325	25.4%
EARLINGTON HEIGHTS	665	669	-0.6%	935	-28.9%	710	-6.3%	377	76.6%
GOVERNMENT CENTER	2,561	2,313	10.7%	4,262	-39.9%	3,823	-33.0%	1,197	114.0%
HIALEAH	471	415	13.7%	583	-19.1%	483	-2.5%	163	190.0%
MIAMI INTERNATIONAL AIRPORT	894	721	24.0%	1,330	-32.8%	947	-5.6%	225	298.3%
NORTHSIDE	666	832	-20.0%	878	-24.2%	700	-4.9%	415	60.6%
OKEECHOBEE	314	378	-16.9%	408	-23.1%	323	-2.7%	127	148.4%
OVERTOWN / ARENA	495	449	10.3%	678	-27.0%	589	-16.0%	185	167.8%
PALMETTO	339	340	-0.2%	458	-25.9%	383	-11.4%	87	292.1%
SANTA CLARA	330	324	1.7%	422	-21.9%	308	7.1%	94	249.7%
SOUTH MIAMI	893	734	21.7%	1,256	-28.9%	920	-2.9%	161	455.8%
TRI-RAIL	420	534	-21.3%	614	-31.7%	487	-13.8%	432	-2.9%
UNIVERSITY	603	544	10.8%	714	-15.5%	696	-13.3%	52	1070.9%
VIZCAYA	499	508	-1.8%	622	-19.8%	545	-8.5%	220	126.9%
<b>TOTAL</b>	<b>19,121</b>	<b>19,282</b>	<b>-0.8%</b>	<b>26,714</b>	<b>-28.4%</b>	<b>21,513</b>	<b>-11.1%</b>	<b>7,177</b>	<b>166.4%</b>

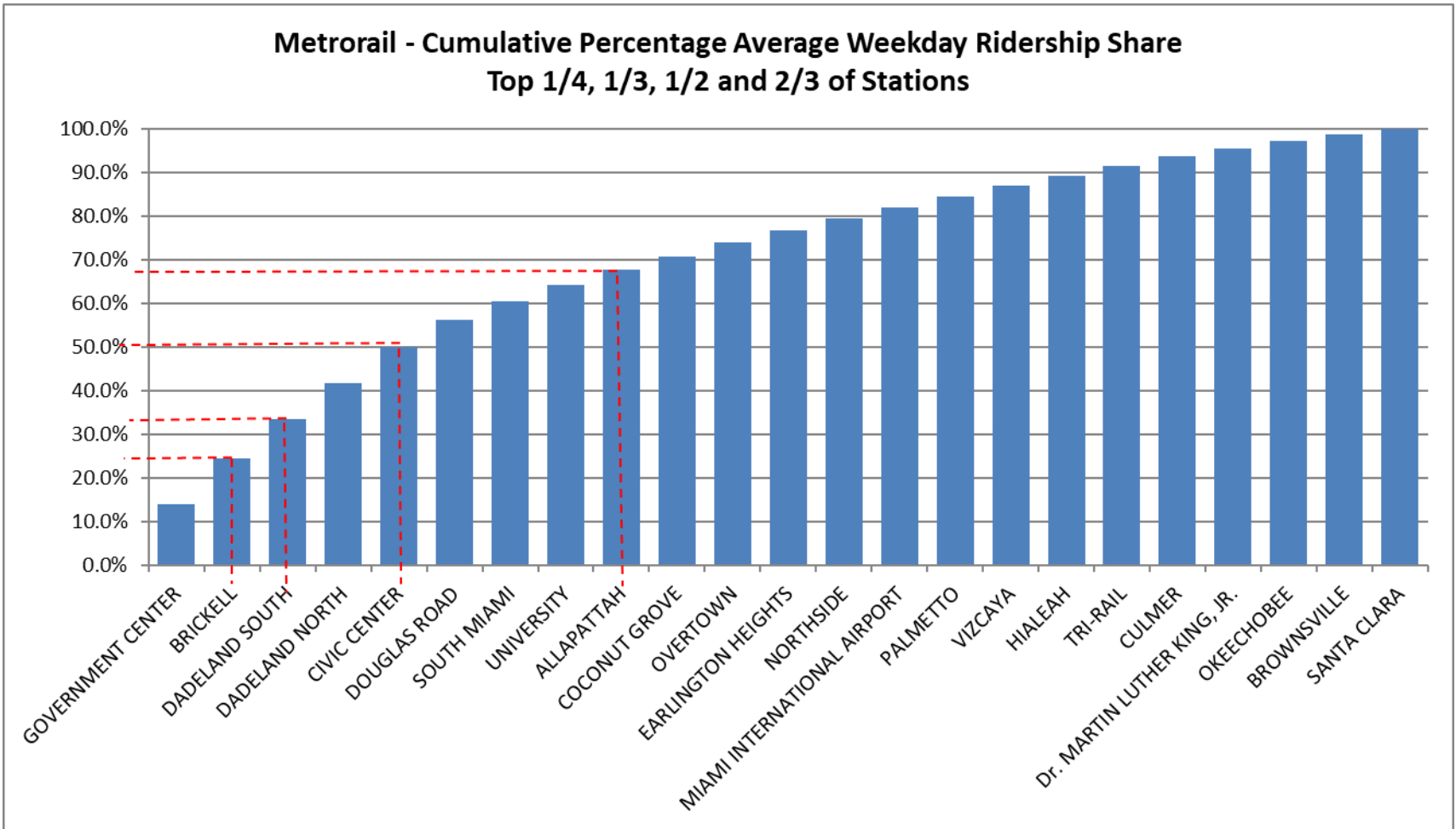
## METRORAIL AVERAGE SUNDAY BOARDINGS BY STATION

<b>Sundays</b>	Average Sunday	Average Sunday	Percent Change	Average Sunday	Percent Change	Average Sunday	Percent Change	Average Sunday	Percent Change
<b>STATIONS</b>	Apr-22	Apr-21	YOY	Feb-20	Current vs Feb-20	Mar-22	MOM	Apr-20	YO2Y
ALLAPATTAH	605	610	-0.7%	791	-23.5%	590	2.5%	296	104.2%
BRICKELL	1,832	2,176	-15.8%	2,379	-23.0%	1,893	-3.2%	362	406.1%
BROWNSVILLE	277	362	-23.7%	406	-31.9%	279	-0.8%	240	15.3%
CIVIC CENTER	504	529	-4.7%	791	-36.3%	534	-5.6%	136	271.3%
COCONUT GROVE	543	514	5.5%	838	-35.3%	599	-9.5%	177	206.5%
CULMER	352	463	-24.1%	616	-42.9%	386	-8.8%	233	51.3%
DADELAND NORTH	951	1,347	-29.4%	1,685	-43.6%	1,107	-14.1%	300	217.3%
DADELAND SOUTH	1,265	1,560	-18.9%	2,210	-42.8%	1,288	-1.8%	341	271.1%
DOUGLAS ROAD	799			1,090	-26.7%	911	-12.4%	175	356.9%
DR. MARTIN LUTHER KING, JR.	308	370	-16.6%	506	-39.1%	351	-12.1%	333	-7.4%
EARLINGTON HEIGHTS	503	551	-8.6%	799	-37.0%	618	-18.6%	345	46.0%
GOVERNMENT CENTER	2,139	1,871	14.3%	4,044	-47.1%	3,108	-31.2%	1,128	89.7%
HIALEAH	343	341	0.7%	472	-27.3%	363	-5.5%	180	90.4%
MIAMI INTERNATIONAL AIRPORT	908	723	25.6%	1,343	-32.4%	890	2.0%	221	311.7%
NORTHSIDE	496	624	-20.5%	653	-24.1%	525	-5.7%	339	46.2%
OKEECHOBEE	171	226	-24.5%	273	-37.6%	167	2.1%	55	211.4%
OVERTOWN / ARENA	460	410	12.3%	544	-15.5%	471	-2.4%	186	147.8%
PALMETTO	205	208	-1.7%	336	-39.2%	233	-12.0%	89	129.8%
SANTA CLARA	225	205	9.6%	280	-19.7%	206	9.2%	67	236.3%
SOUTH MIAMI	625	534	17.0%	987	-36.6%	669	-6.6%	157	299.4%
TRI-RAIL	331	429	-22.7%	528	-37.2%	369	-10.1%	196	69.0%
UNIVERSITY	407	361	12.8%	608	-33.2%	528	-22.9%	79	416.2%
VIZCAYA	387	369	4.9%	524	-26.1%	398	-2.6%	162	138.7%
<b>TOTAL</b>	<b>14,631</b>	<b>14,778</b>	<b>-1.0%</b>	<b>22,701</b>	<b>-35.5%</b>	<b>16,480</b>	<b>-11.2%</b>	<b>5,792</b>	<b>152.6%</b>

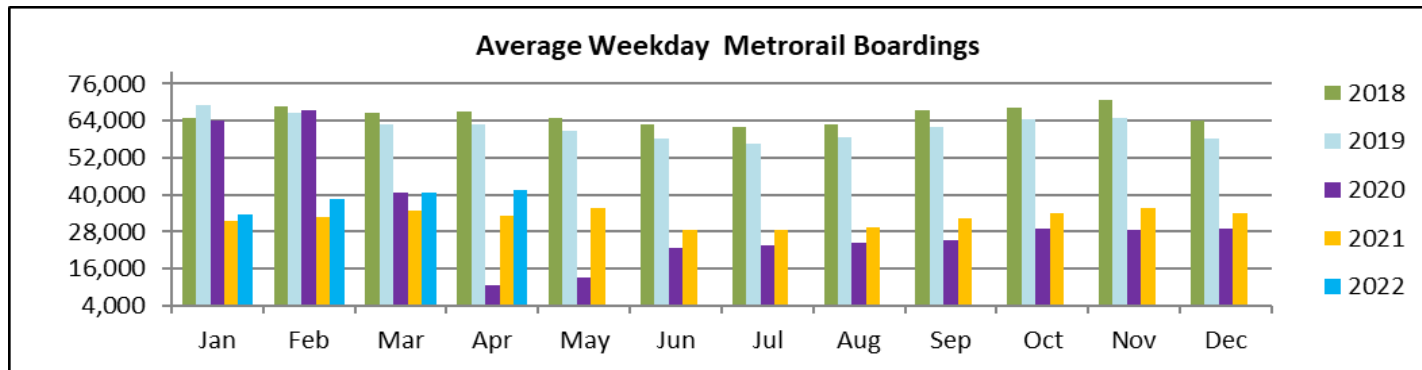
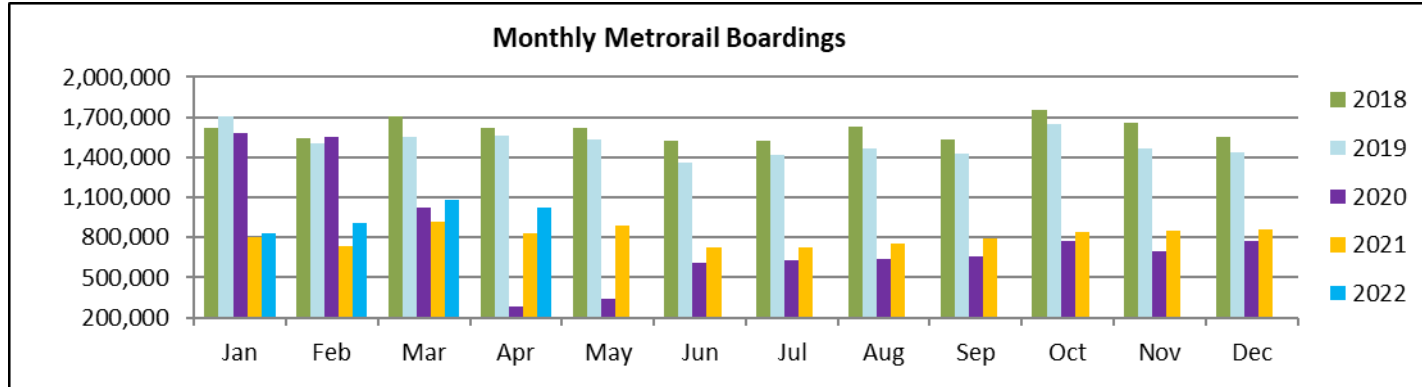
## METRORAIL TOTAL MONTHLY BOARDINGS BY STATION

<b>Monthly Totals</b>	Total Month	Total Month	Percent Change	Total Month	Percent Change	Total Month	Percent Change	Total Month	Percent Change
<b>STATIONS</b>	Apr-22	Apr-21	YOY	Feb-20	Current vs Feb-20	Mar-22	MOM	Apr-20	YO2Y
ALLAPATTAH	35,803	33,356	7.3%	46,868	-23.6%	36,025	-0.6%	15,835	126.1%
BRICKELL	109,917	112,103	-1.9%	152,259	-27.8%	115,024	-4.4%	19,883	452.8%
BROWNSVILLE	15,932	18,096	-12.0%	21,285	-25.1%	16,189	-1.6%	8,700	83.1%
CIVIC CENTER	77,294	64,691	19.5%	128,921	-40.0%	82,300	-6.1%	6,016	1184.8%
COCONUT GROVE	33,350	27,966	19.3%	43,580	-23.5%	35,301	-5.5%	12,336	170.3%
CULMER	22,271	22,969	-3.0%	33,497	-33.5%	23,443	-5.0%	23,279	-4.3%
DADELAND NORTH	83,605	90,540	-7.7%	132,894	-37.1%	87,544	-4.5%	13,654	512.3%
DADELAND SOUTH	91,672	83,863	9.3%	162,416	-43.6%	96,166	-4.7%	29,765	208.0%
DOUGLAS ROAD	62,886			82,141	-23.4%	67,508	-6.8%	16,914	271.8%
DR. MARTIN LUTHER KING, JR.	19,304	19,517	-1.1%	27,980	-31.0%	20,806	-7.2%	11,097	74.0%
EARLINGTON HEIGHTS	29,471	26,329	11.9%	40,697	-27.6%	30,755	-4.2%	15,280	92.9%
GOVERNMENT CENTER	143,407	99,468	44.2%	243,414	-41.1%	159,516	-10.1%	29,353	388.6%
HIALEAH	24,267	16,864	43.9%	29,516	-17.8%	25,260	-3.9%	6,891	252.2%
MIAMI INTERNATIONAL AIRPORT	31,617	21,832	44.8%	46,115	-31.4%	33,419	-5.4%	7,004	351.4%
NORTHSIDE	28,847	28,868	-0.1%	36,127	-20.2%	29,271	-1.4%	13,292	117.0%
OKEECHOBEE	17,706	15,596	13.5%	26,026	-32.0%	18,437	-4.0%	5,986	195.8%
OVERTOWN / ARENA	31,481	21,285	47.9%	49,911	-36.9%	32,806	-4.0%	6,980	351.0%
PALMETTO	24,521	17,706	38.5%	33,944	-27.8%	25,795	-4.9%	5,674	332.2%
SANTA CLARA	14,620	13,363	9.4%	19,245	-24.0%	14,632	-0.1%	4,713	210.2%
SOUTH MIAMI	43,932	30,325	44.9%	69,412	-36.7%	45,741	-4.0%	9,361	369.3%
TRI-RAIL	22,282	19,144	16.4%	29,120	-23.5%	24,047	-7.3%	12,638	76.3%
UNIVERSITY	38,176	23,132	65.0%	61,253	-37.7%	39,555	-3.5%	5,488	595.6%
VIZCAYA	24,778	20,401	21.5%	32,497	-23.8%	25,438	-2.6%	7,664	223.3%
<b>TOTAL</b>	<b>1,027,139</b>	<b>827,414</b>	<b>24.1%</b>	<b>1,549,118</b>	<b>-33.7%</b>	<b>1,084,978</b>	<b>-5.3%</b>	<b>287,803</b>	<b>256.9%</b>

# METRORAIL CUMULATIVE PERCENTAGE RIDERSHIP SHARE



## TOTAL MONTHLY AND AVERAGE WEEKDAY RIDERSHIP YEAR OVER YEAR COMPARISON CHARTS – METRORAIL



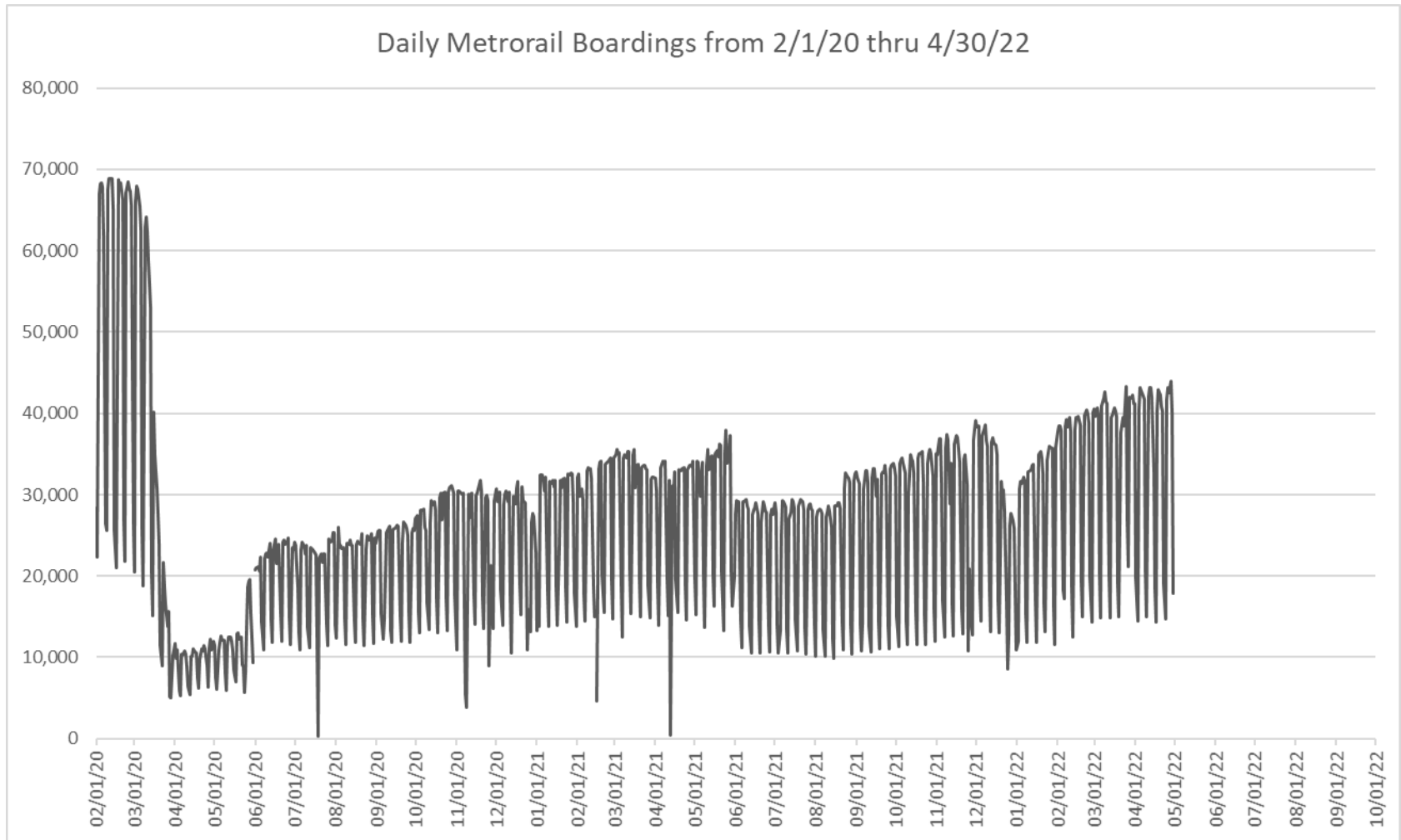


**“TOP 5 / BOTTOM 5” RAIL STATIONS AVERAGE WEEKDAY RIDERSHIP PERFORMANCE  
YEAR OVER YEAR COMPARISONS**

<b>Station</b>	<b>Apr-22</b>	<b>Apr-21</b>	<b>Absolute Delta (1)</b>	<b>Percent Delta</b>
GOVERNMENT CENTER	5,812	3,940	1,872	47.5%
UNIVERSITY	1,597	929	668	71.9%
CIVIC CENTER	3,433	2,849	584	20.5%
SOUTH MIAMI	1,760	1,202	558	46.4%
OVERTOWN	1,294	850	444	52.2%
DADELAND NORTH	3,478	3,696	-218	-5.9%
BROWNSVILLE	615	701	-86	-12.3%
BRICKELL	4,330	4,386	-57	-1.3%
CULMER	885	899	-14	-1.5%
Dr. MARTIN LUTHER KING, JR.	764	757	6	0.9%

- (1) Averages rounded to the nearest boarding.
- (2) As a result of the SARS-CoV-2 pandemic, rides were fare-free beginning March 22, 2020; many rail stations continued reporting YOY gains in April 2022, since April 2021 still showed clear reduction effects on ridership from the SARS-CoV-2 pandemic. Fares were reinstated June 1, 2021, and ridership data from the faregate system rather than the video camera counter system is utilized from that date going forward.

## DAILY METRORAIL RIDERSHIP SINCE FEBRUARY 1, 2020



- (1) National Emergency was declared on 3/13/20 as a result of the SARS-CoV-2 pandemic.
- (2) There was no Metrobus, Metrorail and Metromover service on 5/31/20, as a safety precaution.
- (3) The dip at the start of the second week of November 2020 is due to Hurricane Eta; these are *raw data* from the Unleash Live contractor AI video system.
- (4) The dip on 4/13/21 is due to a loss of connectivity at all stations, affecting a few stations over the next two days as well.
- (5) The reduction seen beginning 6/1/21 is partly due to the resumption of fares and partly the result of resuming reporting Cubi faregate data rather than video camera counts.
- (6) Periodic (weekly) variations are prominent, since weekday ridership is almost always significantly higher than weekend or holiday ridership.

## METRORAIL PARKING PATRONAGE SUMMARY April 2022

PARK-RIDE LOT	ACTUAL CAPACITY (1)	ACTUAL OCCUPANCY (2)	PERCENT OCCUPANCY (3)
DADELAND SOUTH	1,260	583	46%
DADELAND NORTH	1,963	940	48%
SOUTH MIAMI	837	284	34%
UNIVERSITY	230	140	61%
DOUGLAS ROAD	190	175	92%
COCONUT GROVE	100	22	22%
VIZCAYA	120	41	34%
CULMER	40	9	23%
SANTA CLARA	61	38	62%
ALLAPATTAH	74	3	4%
EARLINGTON HEIGHTS	361	143	40%
BROWNSVILLE	100	62	62%
DR. MARTIN LUTHER KING JR. (MDT) (*)	62	0	0%
DR. MARTIN LUTHER KING JR. (GARAGE) (*)	631	0	0%
NORTHSIDE	100	70	70%
HIALEAH	338	38	11%
OKEECHOBEE	1,256	141	11%
PALMETTO	700	130	19%
<b>TOTAL</b>	<b>8,423</b>	<b>2,819</b>	<b>33%</b>

- (1) Number of spaces could vary each week; shown are available spaces during final week of month, as submitted by DTPW Safety & Security office.  
(2) All sampled occupancy data provided by DTPW Safety & Security office; calculations are revisions to those submitted by that entity.  
(3) Daily averages rounded to nearest unit, with fewer counts at some stations due to shortage of DTPW Safety & Security office staff; calculations are based on sampled counted days only per raw data submitted, with resulting average daily occupancy shown.  
(\*) Closed throughout the month, per the DTPW Safety & Security office.

# Metromover



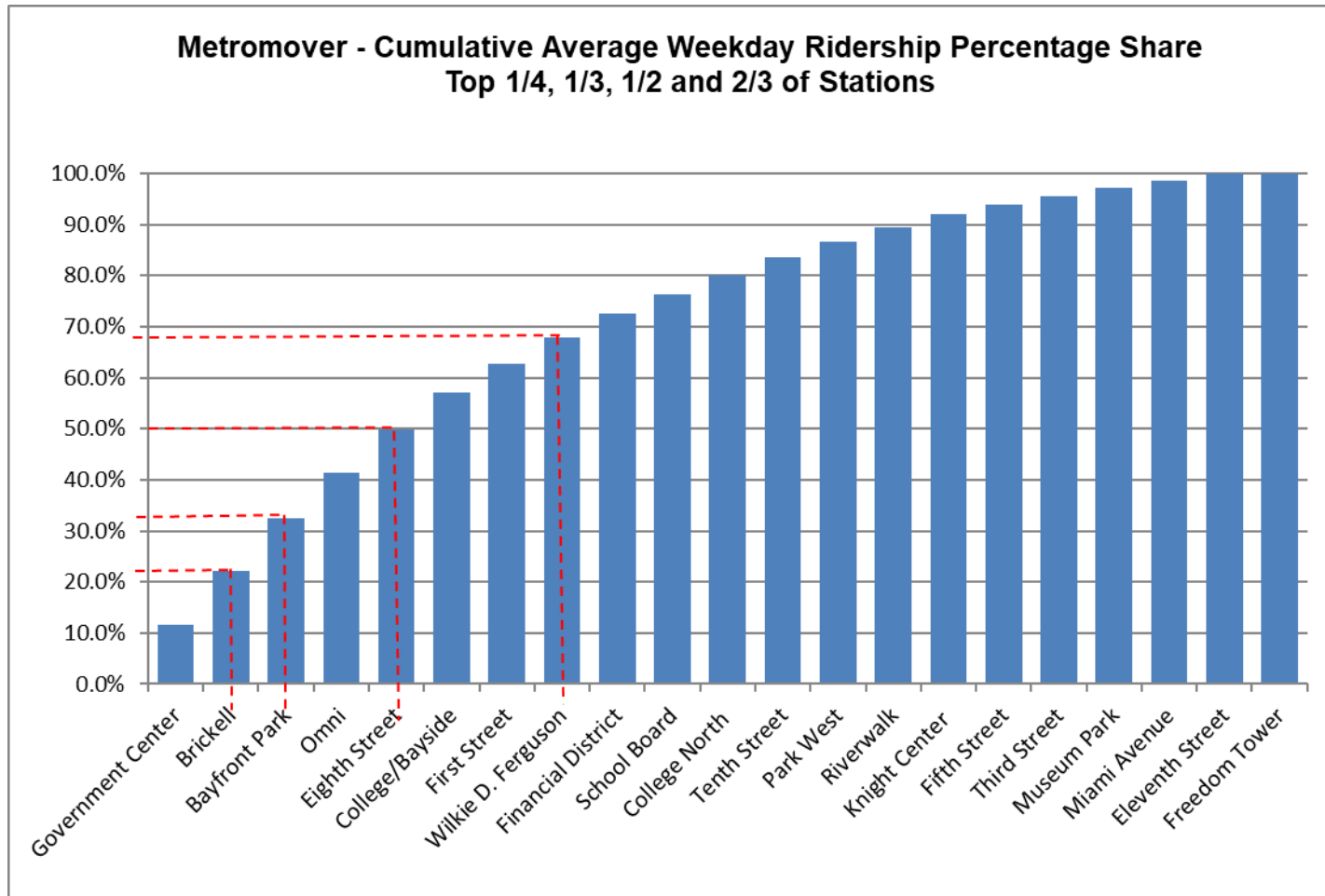
## METROMOVER MONTHLY AND AVERAGE DAILY BOARDINGS BY STATION

	Average Weekday	Average Weekday	Percent Change	Average Saturday	Average Saturday	Percent Change	Average Sunday	Average Sunday	Percent Change	Total Monthly	Total Monthly	Percent Change
STATIONS	Apr-22	Apr-21	22 vs 21	Apr-22	Apr-21	22 vs 21	Apr-22	Apr-21	22 vs 21	Apr-22	Apr-21	22 vs 21
School Board	717	473	51.5%	602	452	33.2%	464	373	24.2%	19,916	13,706	45.3%
Omni	1,668	941	77.2%	1,341	904	48.3%	988	748	32.1%	45,678	27,314	67.2%
Museum Park	285	148	92.2%	349	227	53.5%	257	186	38.3%	8,762	4,917	78.2%
Eleventh Street	267	206	29.2%	218	147	48.4%	150	97	55.0%	7,291	5,515	32.2%
Park West	571	235	142.7%	489	191	155.8%	455	172	164.2%	15,204	6,634	129.2%
<b>Freedom Tower</b>												
Government Center	2,203	1,327	66.0%	1,471	950	54.8%	1,197	839	42.7%	58,416	36,356	60.7%
Miami Avenue	283	206	37.7%	188	188	-0.1%	173	152	13.8%	4,403	4,926	-10.6%
Third Street	307	206	48.8%	229	153	50.4%	184	147	24.8%	8,332	5,741	45.1%
Knight Center	500	307	62.8%	343	177	93.8%	288	153	87.9%	13,364	8,078	65.4%
Bayfront Park	1,957	1,156	69.3%	1,360	1,087	25.1%	1,308	911	43.6%	53,130	33,421	59.0%
First Street	1,066	725	47.0%	905	621	45.8%	710	573	24.0%	23,511	20,718	13.5%
College/Bayside	1,372	728	88.3%	1,128	654	72.5%	879	535	64.2%	29,974	20,780	44.2%
College North	678	293	131.7%	406	186	118.0%	380	130	191.9%	17,788	7,702	131.0%
Wilkie D. Ferguson	948	382	148.1%	575	310	85.7%	530	229	131.7%	24,892	10,555	135.8%
Riverwalk	537	321	67.6%	433	325	33.3%	305	264	15.7%	14,666	9,407	55.9%
Fifth Street	357	281	26.9%	260	245	6.0%	212	170	25.0%	9,644	7,848	22.9%
Eighth Street	1,587	853	86.1%	1,422	831	71.3%	1,014	688	47.5%	44,502	24,834	79.2%
Tenth Street	667	412	61.8%	553	343	61.3%	437	294	48.6%	18,513	10,564	75.2%
Brickell	1,970	1,304	51.1%	1,624	1,232	31.8%	1,380	1,054	30.9%	55,003	37,829	45.4%
Financial District	893	515	73.5%	524	365	43.5%	403	285	41.3%	22,993	13,927	65.1%
<b>TOTAL</b>	<b>18,833</b>	<b>11,020</b>	<b>70.9%</b>	<b>14,420</b>	<b>9,586</b>	<b>50.4%</b>	<b>11,713</b>	<b>7,998</b>	<b>46.4%</b>	<b>495,982</b>	<b>310,772</b>	<b>59.6%</b>

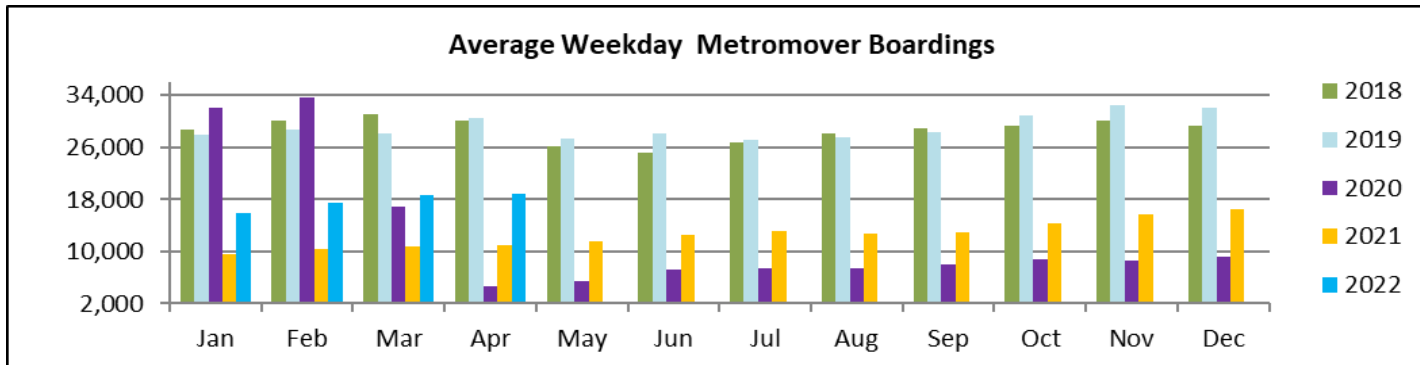
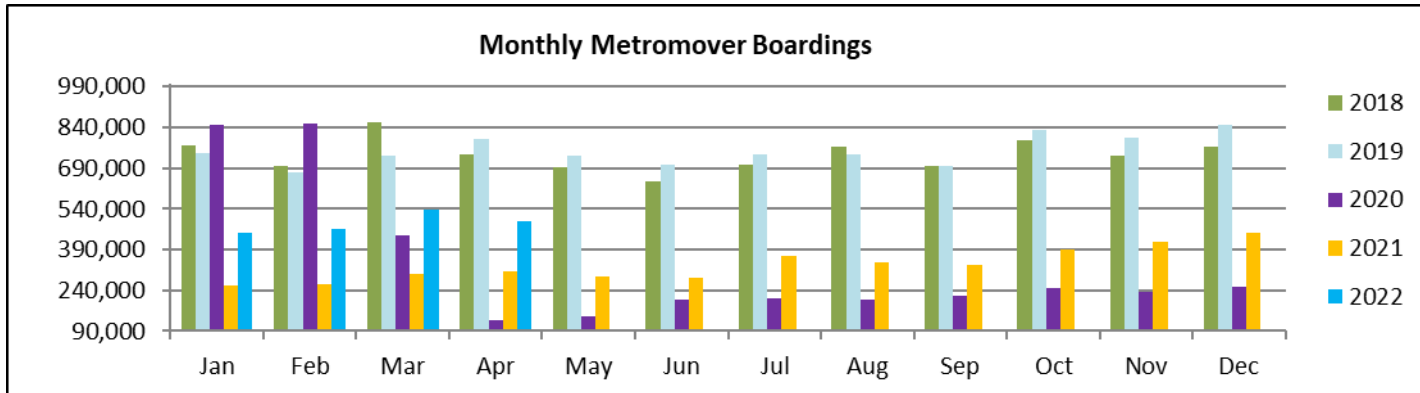
(1) Freedom Tower Station was closed for construction.

(\*) APC system did not report boardings data at several stations on several days in April 2022; the average daily rideship calculations take this into account.

# METROMOVER CUMULATIVE PERCENTAGE RIDERSHIP SHARE



## TOTAL MONTHLY AND AVERAGE WEEKDAY RIDERSHIP YEAR OVER YEAR COMPARISON CHARTS – METROMOVER



**“TOP 5 / BOTTOM 5” MOVER STATIONS AVERAGE WEEKDAY RIDERSHIP PERFORMANCE  
YEAR OVER YEAR COMPARISONS**

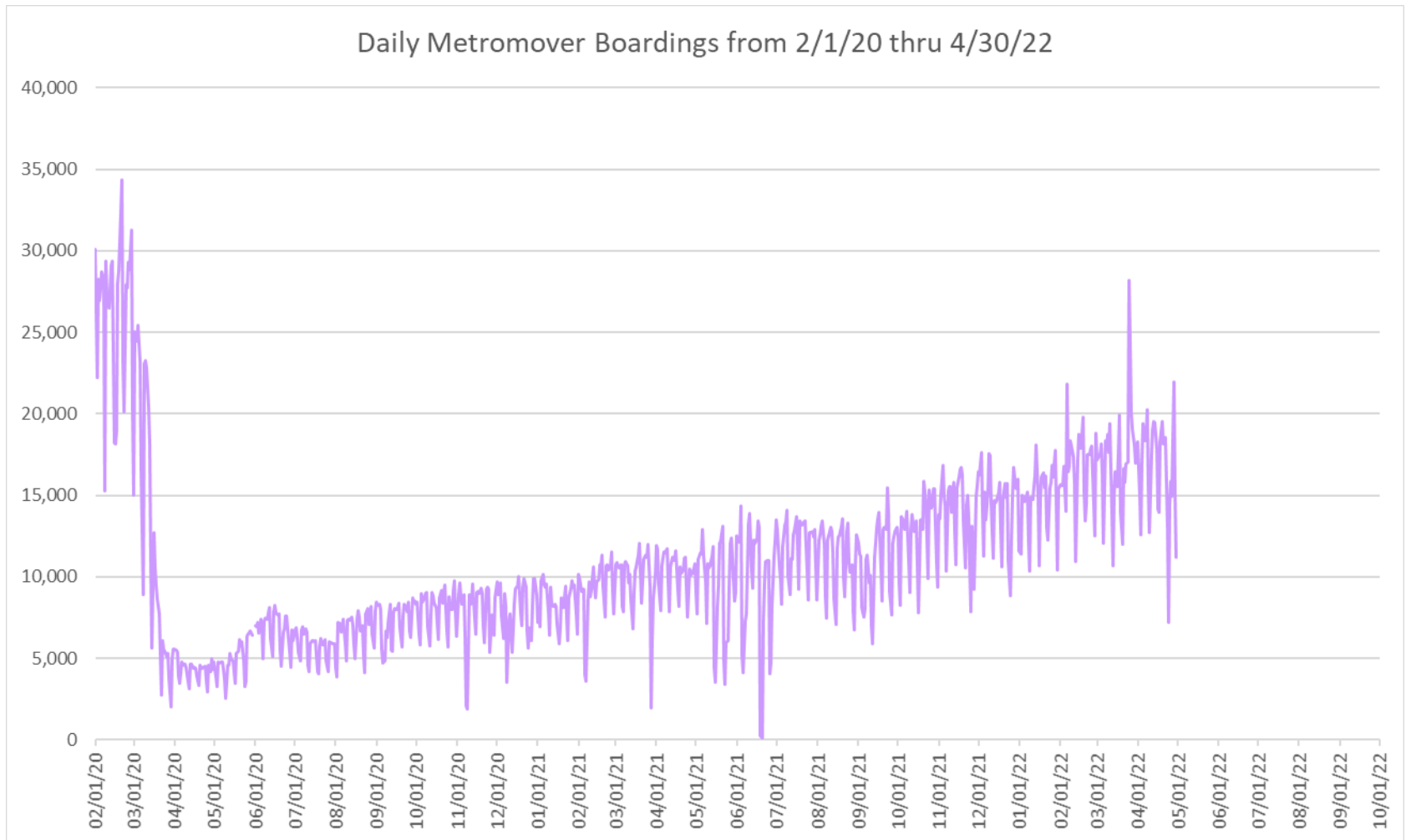
<b>Station</b>	<b>Apr-22</b>	<b>Apr-21</b>	<b>Absolute Delta (1)</b>	<b>Percent Delta</b>
Government Center	2,203	1,327	876	66.0%
Bayfront Park	1,957	1,156	801	69.3%
Eighth Street	1,587	853	735	86.1%
Omni	1,668	941	726	77.2%
Brickell	1,970	1,304	666	51.1%
Eleventh Street	267	206	60	29.2%
Fifth Street	357	281	76	26.9%
Miami Avenue	283	206	78	37.7%
Third Street	307	206	101	48.8%
Museum Park	285	148	137	92.2%

(1) Averages rounded to the nearest boarding.

(†) All Metromover stations reporting YOY gains in April 2022, as April 2021 showed clear ongoing reduction effects on ridership from the SARS-CoV-2 pandemic.



## DAILY METROMOVER RIDERSHIP SINCE FEBRUARY 1, 2020



- (1) National Emergency was declared on 3/13/20 as a result of the SARS-CoV-2 pandemic.
- (2) There was no Metrobus, Metrorail and Metromover service on 5/31/20, as a safety precaution.
- (3) The dip at the start of the second week of November 2020 is due to Hurricane Eta; these are *raw data* from the UTA contractor APC system. Other more recent dips are due to various station closures (mostly on weekends) for system maintenance purposes.
- (4) Periodic (weekly) variations are prominent, since weekday ridership is almost always significantly higher than weekend or holiday ridership.

## Special Transportation Services

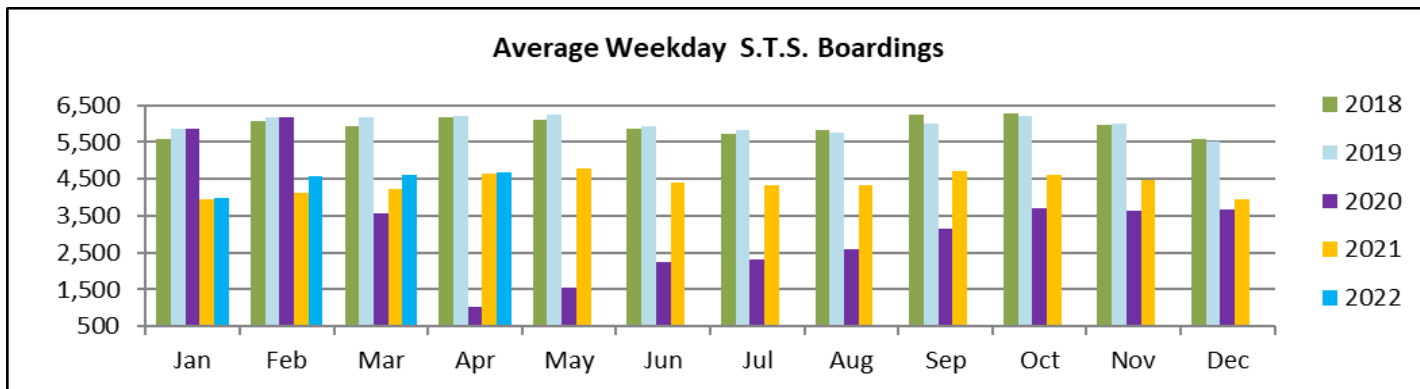
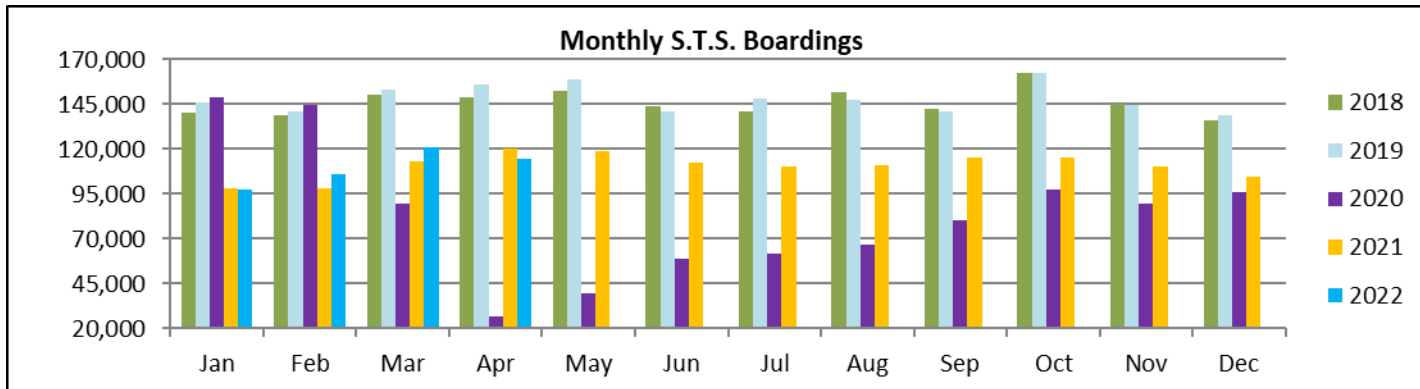


**STS MONTHLY AND AVERAGE DAILY BOARDINGS**  
**April 2022**

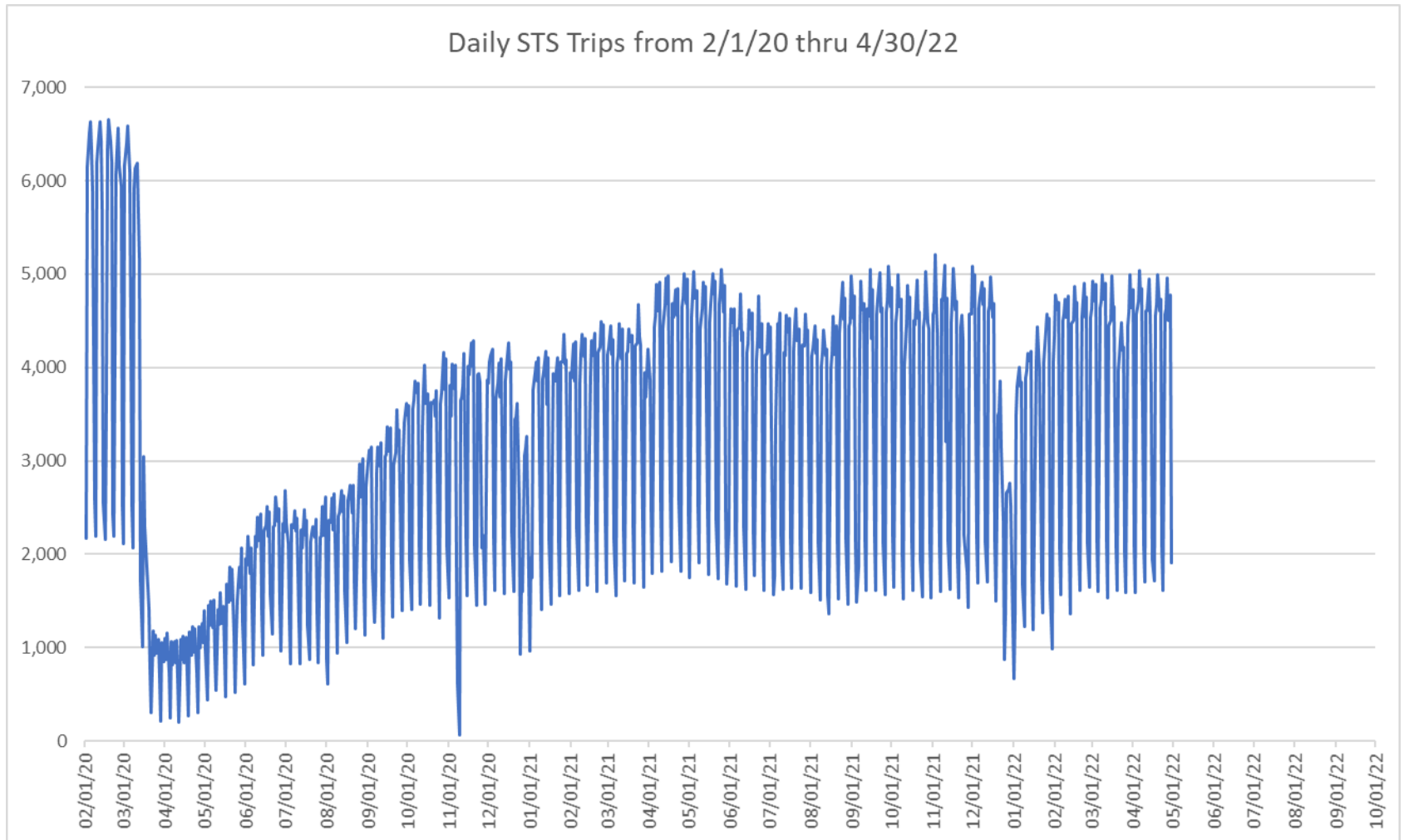
<b>Measure</b>	<b>timeline</b>	<b>Ambulatory</b>	<b>Wheelchair</b>	<b>Total Clients (*)</b>
<b>Average Weekday</b>	Apr-22	3,859	818	<b>4,677</b>
<b>Average Saturday</b>	Apr-22	1,646	372	<b>2,018</b>
<b>Average Sunday</b>	Apr-22	1,316	337	<b>1,653</b>
<b>Total Monthly</b>	<b>Apr-22</b>	<b>94,532</b>	<b>20,380</b>	<b>114,912</b>
<b>Average Weekday</b>	Apr-21	3,838	822	<b>4,660</b>
<b>Average Saturday</b>	Apr-21	2,109	453	<b>2,561</b>
<b>Average Sunday</b>	Apr-21	1,570	269	<b>1,838</b>
<b>Total Monthly</b>	<b>Apr-21</b>	<b>99,153</b>	<b>20,969</b>	<b>120,122</b>
<b>Average Weekday</b>	Apr-20	784	262	<b>1,046</b>
<b>Average Saturday</b>	Apr-20	524	188	<b>712</b>
<b>Average Sunday</b>	Apr-20	212	40	<b>252</b>
<b>Total Monthly</b>	<b>Apr-20</b>	<b>20,192</b>	<b>6,685</b>	<b>26,877</b>
<b>% Change Current vs. Apr 2021 Weekday</b>		0.5%	-0.5%	0.4%
<b>% Change Current vs. Apr 2021 Saturday</b>		-21.9%	-17.9%	-21.2%
<b>% Change Current vs. Apr 2021 Sunday</b>		-16.2%	25.5%	-10.1%
<b>% Change Current vs. Apr 2021 Month Total</b>		<b>-4.7%</b>	<b>-2.8%</b>	<b>-4.3%</b>
<b>% Change Current vs. Apr 2020 Weekday</b>		392.2%	211.7%	346.9%
<b>% Change Current vs. Apr 2020 Saturday</b>		214.1%	97.5%	183.3%
<b>% Change Current vs. Apr 2020 Sunday</b>		521.5%	742.5%	556.6%
<b>% Change Current vs. Apr 2020 Month Total</b>		<b>368.2%</b>	<b>204.9%</b>	<b>327.5%</b>

(\*) Trip count data provided by STS contractor.

## TOTAL MONTHLY AND AVERAGE WEEKDAY RIDERSHIP YEAR OVER YEAR COMPARISON CHARTS – SPECIAL TRANSPORTATION SERVICES (S.T.S.)



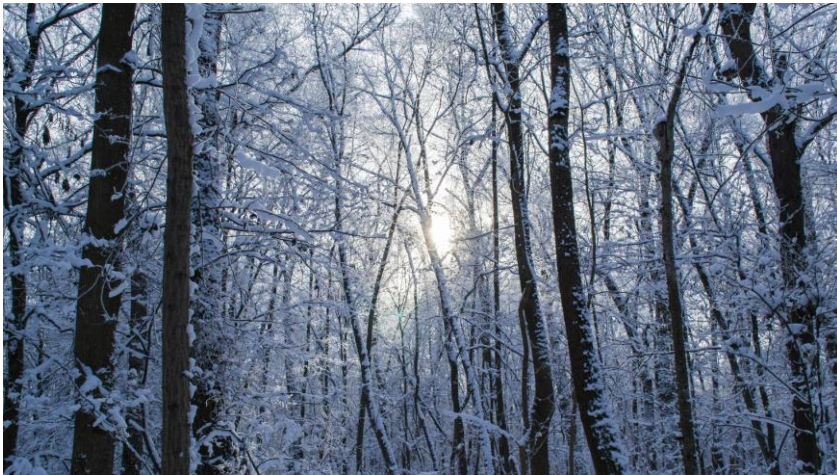
## DAILY STS RIDERSHIP SINCE FEBRUARY 1, 2020



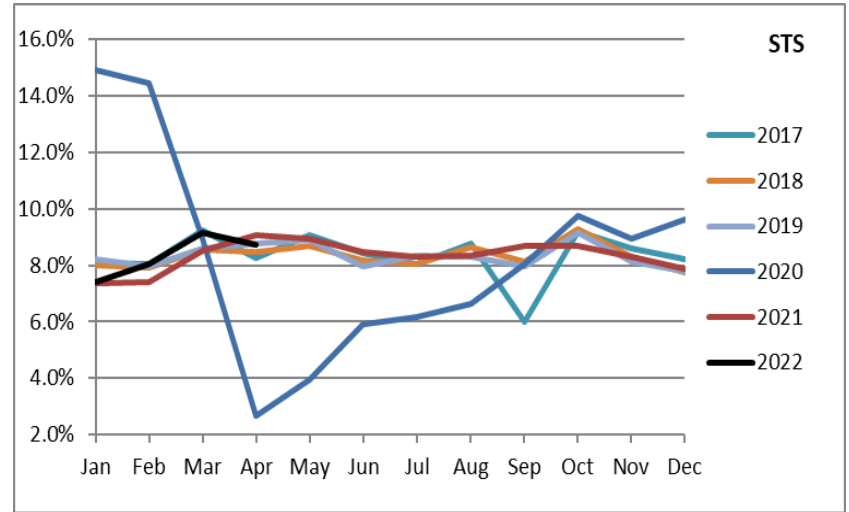
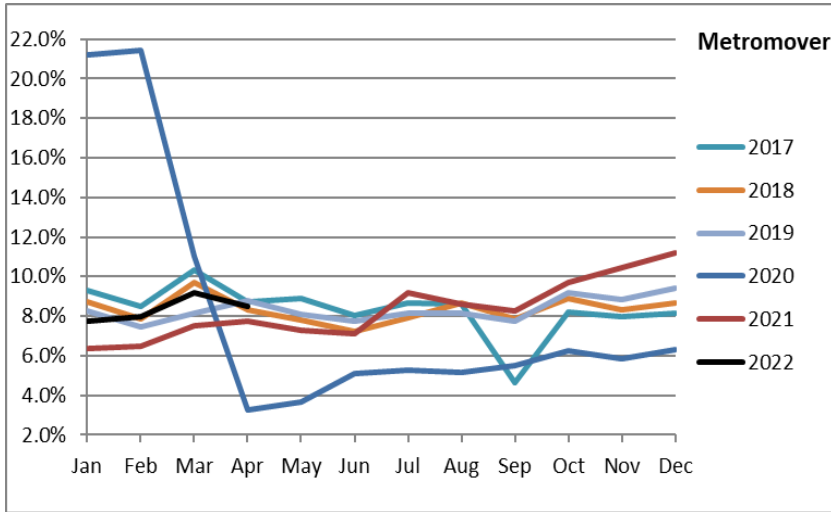
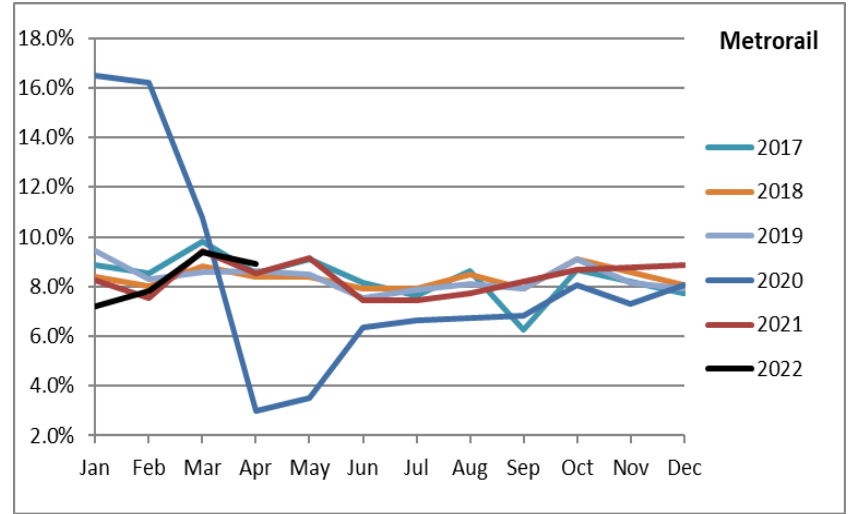
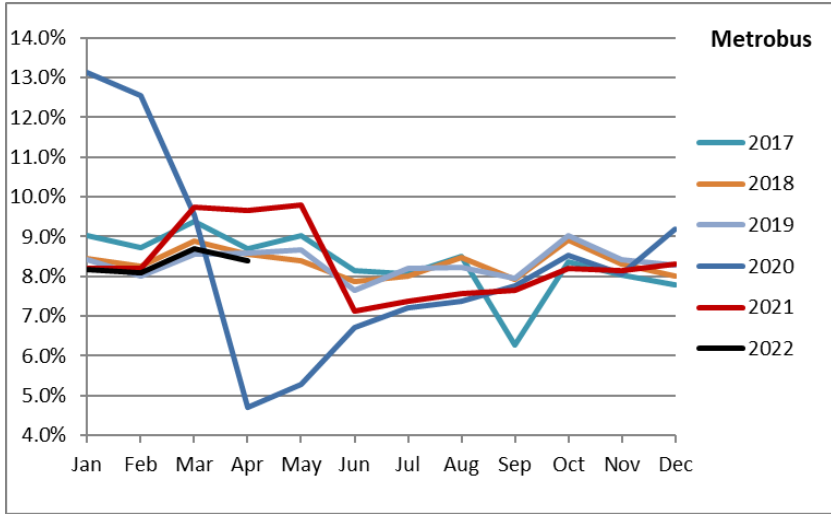
- (1) National Emergency was declared on 3/13/20 as a result of the SARS-CoV-2 pandemic.
- (2) The dip at the start of the second week of November 2020 is due to Hurricane Eta.
- (3) Periodic (weekly) variations are prominent, since weekday ridership is almost always significantly higher than weekend or holiday ridership.



# Ridership Seasonality



# RIDERSHIP SEASONALITY – PERCENT RIDERSHIP SHARE BY MONTH AND CALENDAR YEAR FOR EACH MODE



Note: the prominent dips seen in the fall of 2017 and beginning in the spring of 2020 are due to Hurricane Irma and the SARS-CoV-2 pandemic, respectively. Reductions in Bus and Rail ridership share seen beginning in June 2021 are due to reinstatement of fares as well changes in reporting tools and datasets, as discussed earlier in this report.