



# TRANSPORTATION AND PUBLIC WORKS

## RIDERSHIP TECHNICAL REPORT

*Division of Performance and Materials Management*



August 2022

# Table of Contents

<i>Table of Contents</i>	2-3
<b>All Modes Overview</b>	<b>4</b>
Total Monthly Weekday, Saturday and Sunday Monthly Boardings By Mode	5
Average Weekday, Saturday and Sunday Boardings by Mode	6
Metrobus Total Monthly Ridership Comparisons by Fiscal Year	7
Metrorail Total Monthly Ridership Comparisons by Fiscal Year	8
Metromover Total Monthly Ridership Comparisons by Fiscal Year	9
STS Total Monthly Ridership Comparisons by Fiscal Year	10
All-Modes Combined Total Monthly Ridership Comparisons By Fiscal Year	11
All Modes Combined Total Monthly and Average Weekday Ridership – Year over Year Comparison Charts	12
Average Weekday Ridership – Modal Splits	13
Daily Ridership for All Modes Combined since February 1, 2020	14
<b>Metrobus</b>	<b>15</b>
Metrobus Average Weekday Boardings by Route	16-18
Metrobus Average Saturday Boardings by Route	19-20
Metrobus Average Sunday Boardings by Route	21-22
Metrobus Monthly Total Boardings by Route	23-25
Year-over-Year Bus Ridership by Route Service Type	26-27
Bus Routes as Ranked by Percentage of Average Weekday Ridership	28
Metrobus Cumulative Percentage Average Weekday Ridership Share by Route (Top 75%)	29
Total Monthly and Average Weekday Bus Ridership – Year over Year Comparison Charts	30
Bus “Top 5 / Bottom 5” Routes Average Weekday Ridership Performance	31
Daily Metrobus Ridership since February 1, 2020	32
Metrobus Parking Patronage Summary	33

## Table of Contents (continued)

<b>Metrorail</b>	<b>34</b>
Metrorail Average Weekday Boardings by Station	35
Metrorail Average Saturday Boardings by Station	36
Metrorail Average Sunday Boardings by Station	37
Metrorail Total Monthly Boardings by Station	38
Metrorail Cumulative Percentage Average Weekday Ridership Share	39
Total Monthly and Average Weekday Rail Ridership – Year over Year Comparison Charts	40
“Top 5 / Bottom 5” Stations Average Weekday Ridership Performance	41
Daily Metrorail Ridership since February 1, 2020	42
Metrorail Parking Patronage Summary	43
<b>Metromover</b>	<b>44</b>
Monthly and Average Daily Mover Boardings by Station	45
Metromover Cumulative Percentage Average Weekday Ridership Share	46
Total Monthly and Average Weekday Mover Ridership – Year over Year Comparison Charts	47
“Top 5 / Bottom 5” Stations Average Weekday Ridership Performance	48
Daily Metromover Ridership since February 1, 2020	49
<b>Special Transportation Services (STS)</b>	<b>50</b>
STS Monthly and Average Daily Boardings	51
Total Monthly and Average Weekday STS Ridership – Year over Year Comparison Charts	52
Daily STS Ridership since February 1, 2020	53
<b>Ridership Seasonality</b>	<b>54</b>
Ridership Seasonality – Percent Ridership Share by Month and Calendar year for Each Mode	55

# All Modes Overview



**TOTAL MONTHLY WEEKDAY, SATURDAY AND SUNDAY BOARDINGS BY MODE**  
**August 2022**

<b>TRAVEL MODE</b>	<b>MONTH'S TOTAL WEEKDAYS RIDERSHIP</b>	<b>MONTH'S TOTAL SATURDAYS RIDERSHIP</b>	<b>MONTH'S TOTAL SUNDAYS RIDERSHIP</b>	<b>TOTAL MONTHLY RIDERSHIP</b>	<b>% CHANGE vs Aug 2021 TOTAL MONTH RIDERSHIP</b>
<b>METROBUS (1)</b>	2,910,401	306,373	225,232	3,442,006	21.0%
<b>METRORAIL (2)</b>	947,541	72,967	55,982	1,076,490	43.6%
<b>METROMOVER (3)</b>	406,950	56,123	45,286	508,359	47.6%
<b>STS PARATRANSIT (4)</b>	103,127	8,195	6,619	117,941	6.5%
<b>TOTAL</b>	<b>4,368,019</b>	<b>443,658</b>	<b>333,119</b>	<b>5,144,796</b>	<b>27.1%</b>

- (1) Metrobus fares resumed on June 1, 2021, following a 14-month period of fare-free rides as a result of the SARS-CoV-2 pandemic. The NextFare System farebox data replaced the bus automatic passenger counter data as ridership data of record starting on that date.
- (2) Metrorail fares resumed on June 1, 2021, following a 14-month period of fare-free rides as a result of the SARS-CoV-2 pandemic. The NextFare System faregate data replaced the video data as ridership data of record starting on that date.
- (3) Beginning March 13, 2020 (day of National Emergency Declaration due to SARS-CoV-2 pandemic), only raw data from Metromover automatic passenger counters is reported; no estimates are performed after March 13, 2020.
- (4) Paratransit ridership data as reported by the contractor.

**AVERAGE WEEKDAY, SATURDAY AND SUNDAY BOARDINGS BY MODE**  
**August 2022**

<b>Travel Mode</b>	<b>Average Weekday</b>	<b>Average Saturday</b>	<b>Average Sunday</b>	<b>% Change Aug 2021 Weekday</b>	<b>% Change Aug 2021 Saturday</b>	<b>% Change Aug 2021 Sunday</b>
<b>METROBUS</b>	126,601	76,593	56,308	18.8%	19.4%	14.8%
<b>METRORAIL</b>	41,197	18,242	13,996	40.7%	35.7%	36.0%
<b>METROMOVER</b>	18,681	15,116	12,469	47.6%	55.0%	47.3%
<b>STS PARATRANSIT</b>	4,484	2,049	1,655	3.4%	3.3%	11.2%
<b>Totals (1)</b>	<b>190,963</b>	<b>111,999</b>	<b>84,427</b>	<b>24.9%</b>	<b>25.4%</b>	<b>21.9%</b>

(1) Average daily ridership is calculated and published only for those days and stations with nontrivial amounts of reported data.

## METROBUS TOTAL MONTHLY RIDERSHIP COMPARISONS BY FISCAL YEAR

<b>Bus Month</b>	<b>FY 18</b>	<b>FY 19</b>	<b>Variance 18 to 19</b>	<b>FY 20</b>	<b>Variance 19 to 20</b>	<b>FY 21</b>	<b>FY 22</b>	<b>Variance 21 to 22</b>	<b>Variance 19 to 22</b>	<b>Variance 18 to 22</b>
<b>Oct</b>	4,709,590	4,554,886	-3.3%	4,507,012	-1.1%	2,805,139	3,081,157	9.8%	-32.4%	-34.6%
<b>Nov</b>	4,522,250	4,245,535	-6.1%	4,197,225	-1.1%	2,651,290	3,056,726	15.3%	-28.0%	-32.4%
<b>Dec</b>	4,380,099	4,081,581	-6.8%	4,126,990	1.1%	3,022,530	3,123,883	3.4%	-23.5%	-28.7%
<b>Jan</b>	4,307,001	4,195,911	-2.6%	4,316,998	2.9%	3,082,746	3,029,055	-1.7%	-27.8%	-29.7%
<b>Feb</b>	4,208,811	3,994,019	-5.1%	4,123,083	3.2%	3,076,966	2,995,789	-2.6%	-25.0%	-28.8%
<b>Mar</b>	4,534,564	4,266,768	-5.9%	3,136,162	-26.5%	3,660,639	3,218,562	-12.1%	-24.6%	-29.0%
<b>Apr</b>	4,360,997	4,291,135	-1.6%	1,544,316	-64.0%	3,625,048	3,105,797	-14.3%	-27.6%	-28.8%
<b>May</b>	4,277,628	4,330,922	1.2%	1,734,609	-59.9%	3,683,343	3,097,574	-15.9%	-28.5%	-27.6%
<b>Jun</b>	4,009,340	3,823,863	-4.6%	2,210,725	-42.2%	2,672,570	3,064,059	14.6%	-19.9%	-23.6%
<b>Jul</b>	4,080,664	4,094,906	0.3%	2,366,749	-42.2%	2,769,907	3,189,994	15.2%	-22.1%	-21.8%
<b>Aug</b>	4,326,980	4,109,613	-5.0%	2,422,014	-41.1%	2,843,552	3,442,006	21.0%	-16.2%	-20.5%
<b>Sep</b>	4,041,992	3,971,220	-1.8%	2,546,923	-35.9%	2,877,110				
<b>FY Total</b>	<b>51,759,916</b>	<b>49,960,359</b>	<b>-3.5%</b>	<b>37,232,806</b>	<b>-25.5%</b>	<b>36,770,840</b>				

## METRORAIL TOTAL MONTHLY RIDERSHIP COMPARISONS BY FISCAL YEAR

<b>Rail</b>			<b>Variance</b>		<b>Variance</b>			<b>Variance</b>	<b>Variance</b>	<b>Variance</b>
<b>Month</b>	<b>FY 18</b>	<b>FY 19</b>	<b>18 to 19</b>	<b>FY 20</b>	<b>19 to 20</b>	<b>FY 21</b>	<b>FY 22</b>	<b>21 to 22</b>	<b>19 to 22</b>	<b>18 to 22</b>
<b>Oct</b>	1,708,564	1,757,225	2.8%	1,643,166	-6.5%	769,525	844,383	9.7%	-51.9%	-50.6%
<b>Nov</b>	1,609,888	1,656,929	2.9%	1,469,448	-11.3%	699,492	850,881	21.6%	-48.6%	-47.1%
<b>Dec</b>	1,517,341	1,553,804	2.4%	1,433,928	-7.7%	769,194	860,436	11.9%	-44.6%	-43.3%
<b>Jan</b>	1,615,576	1,708,695	5.8%	1,576,340	-7.7%	799,119	832,924	4.2%	-51.3%	-48.4%
<b>Feb</b>	1,545,581	1,501,458	-2.9%	1,549,118	3.2%	730,792	905,162	23.9%	-39.7%	-41.4%
<b>Mar</b>	1,700,714	1,554,851	-8.6%	1,027,319	-33.9%	917,097	1,084,978	18.3%	-30.2%	-36.2%
<b>Apr</b>	1,619,890	1,559,446	-3.7%	287,803	-81.5%	827,414	1,027,139	24.1%	-34.1%	-36.6%
<b>May</b>	1,618,504	1,531,597	-5.4%	337,696	-78.0%	887,111	1,023,322	15.4%	-33.2%	-36.8%
<b>Jun</b>	1,524,311	1,359,966	-10.8%	608,758	-55.2%	723,469	975,477	34.8%	-28.3%	-36.0%
<b>Jul</b>	1,527,380	1,419,158	-7.1%	632,964	-55.4%	722,159	953,331	32.0%	-32.8%	-37.6%
<b>Aug</b>	1,632,471	1,463,646	-10.3%	641,275	-56.2%	749,578	1,076,490	43.6%	-26.5%	-34.1%
<b>Sep</b>	1,530,088	1,427,726	-6.7%	654,244	-54.2%	795,749				
<b>FY Total</b>	<b>19,150,308</b>	<b>18,494,501</b>	<b>-3.4%</b>	<b>11,862,059</b>	<b>-35.9%</b>	<b>9,390,699</b>				



## METROMOVER TOTAL MONTHLY RIDERSHIP COMPARISONS BY FISCAL YEAR

<b>Mover</b>			<b>Variance</b>		<b>Variance</b>			<b>Variance</b>	<b>Variance</b>	<b>Variance</b>
<b>Month</b>	<b>FY 18</b>	<b>FY 19</b>	<b>18 to 19</b>	<b>FY 20</b>	<b>19 to 20</b>	<b>FY 21</b>	<b>FY 22</b>	<b>21 to 22</b>	<b>19 to 22</b>	<b>18 to 22</b>
<b>Oct</b>	751,323	790,533	5.2%	831,234	5.1%	250,044	389,065	55.6%	-50.8%	-48.2%
<b>Nov</b>	729,519	735,198	0.8%	799,632	8.8%	232,422	418,929	80.2%	-43.0%	-42.6%
<b>Dec</b>	748,797	767,239	2.5%	849,832	10.8%	251,019	450,320	79.4%	-41.3%	-39.9%
<b>Jan</b>	772,122	746,728	-3.3%	847,773	13.5%	255,968	451,566	76.4%	-39.5%	-41.5%
<b>Feb</b>	698,107	675,160	-3.3%	855,398	26.7%	260,332	465,968	79.0%	-31.0%	-33.3%
<b>Mar</b>	859,143	737,814	-14.1%	441,200	-40.2%	302,502	535,857	77.1%	-27.4%	-37.6%
<b>Apr</b>	740,036	795,696	7.5%	130,549	-83.6%	310,772	495,982	59.6%	-37.7%	-33.0%
<b>May</b>	694,106	734,645	5.8%	146,454	-80.1%	292,922	455,120	55.4%	-38.0%	-34.4%
<b>Jun</b>	641,675	701,318	9.3%	203,637	-71.0%	286,145	477,286	66.8%	-31.9%	-25.6%
<b>Jul</b>	700,462	739,814	5.6%	210,596	-71.5%	368,847	512,094	38.8%	-30.8%	-26.9%
<b>Aug</b>	768,728	739,785	-3.8%	205,995	-72.2%	344,319	508,359	47.6%	-31.3%	-33.9%
<b>Sep</b>	698,505	699,879	0.2%	219,696	-68.6%	331,915				
<b>FY Total</b>	<b>8,802,523</b>	<b>8,863,809</b>	<b>0.7%</b>	<b>5,741,996</b>	<b>-35.2%</b>	<b>3,487,207</b>				

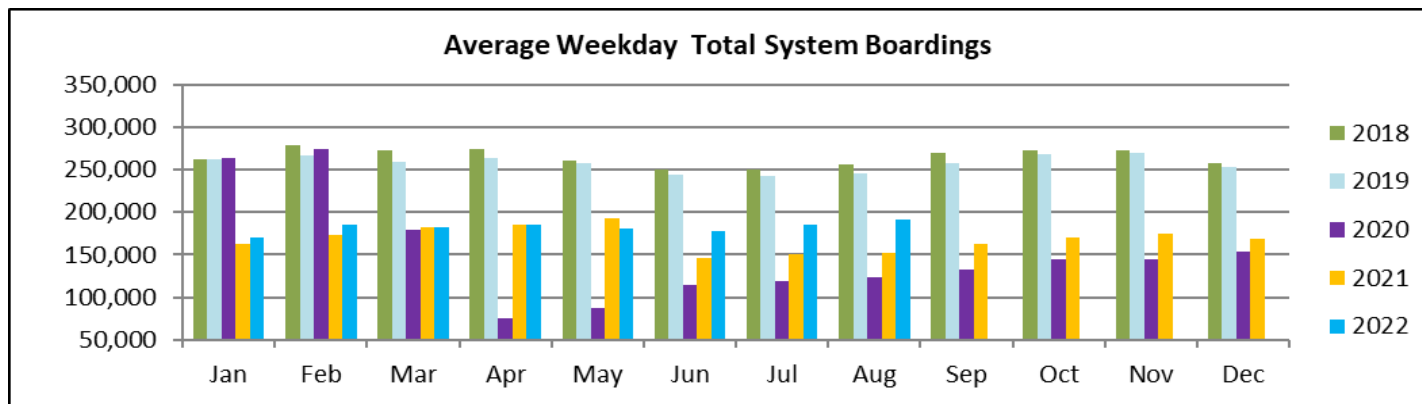
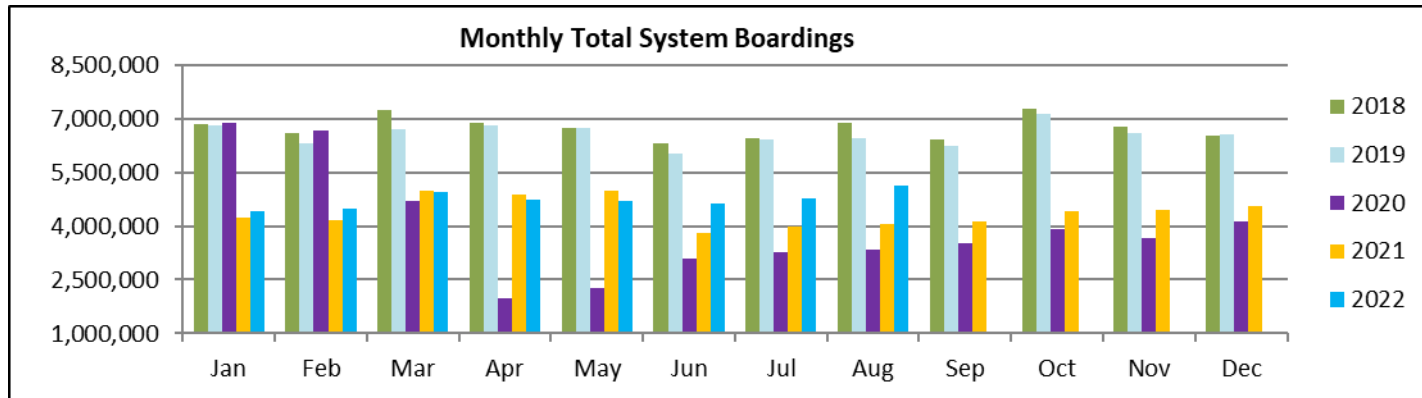
## SPECIAL TRANSPORTATION SERVICES (STS) TOTAL MONTHLY RIDERSHIP COMPARISONS BY FISCAL YEAR

<b>STS</b>											
<b>Month</b>	<b>FY 18</b>	<b>FY 19</b>	<b>Variance 18 to 19</b>	<b>FY 20</b>	<b>Variance 19 to 20</b>	<b>FY 21</b>	<b>FY 22</b>	<b>Variance 21 to 22</b>	<b>Variance 19 to 22</b>	<b>Variance 18 to 22</b>	
<b>Oct</b>	153,409	162,564	6.0%	162,704	0.1%	97,388	115,122	18.2%	-29.2%	-25.0%	
<b>Nov</b>	143,375	145,653	1.6%	144,366	-0.9%	89,387	110,289	23.4%	-24.3%	-23.1%	
<b>Dec</b>	136,955	136,110	-0.6%	138,642	1.9%	96,366	104,496	8.4%	-23.2%	-23.7%	
<b>Jan</b>	140,042	146,268	4.4%	149,114	1.9%	97,928	97,541	-0.4%	-33.3%	-30.3%	
<b>Feb</b>	139,032	141,396	1.7%	144,392	2.1%	98,285	105,706	7.6%	-25.2%	-24.0%	
<b>Mar</b>	150,384	153,191	1.9%	89,634	-41.5%	112,930	120,718	6.9%	-21.2%	-19.7%	
<b>Apr</b>	148,879	155,808	4.7%	26,877	-82.7%	120,122	114,912	-4.3%	-26.2%	-22.8%	
<b>May</b>	152,164	158,665	4.3%	39,654	-75.0%	118,636	114,505	-3.5%	-27.8%	-24.7%	
<b>Jun</b>	143,653	141,320	-1.6%	59,093	-58.2%	112,397	109,054	-3.0%	-22.8%	-24.1%	
<b>Jul</b>	141,020	148,232	5.1%	61,765	-58.3%	110,059	107,188	-2.6%	-27.7%	-24.0%	
<b>Aug</b>	151,750	147,331	-2.9%	66,563	-54.8%	110,766	117,941	6.5%	-19.9%	-22.3%	
<b>Sep</b>	142,360	141,387	-0.7%	80,346	-43.2%	115,406					
<b>FY Total</b>	<b>1,743,023</b>	<b>1,777,925</b>	<b>2.0%</b>	<b>1,163,150</b>	<b>-34.6%</b>	<b>1,279,670</b>					

## ALL-MODES COMBINED TOTAL MONTHLY RIDERSHIP COMPARISONS BY FISCAL YEAR

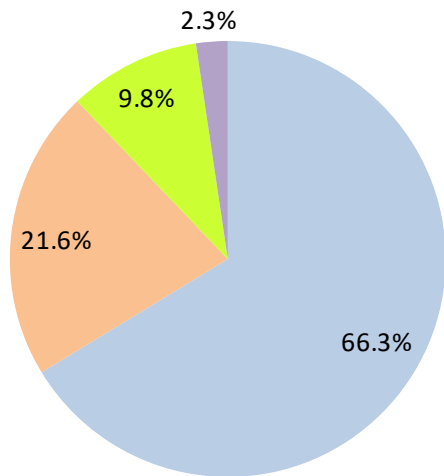
All Modes	Variances										
	Month	FY 18	FY 19	FY 20	FY 21	FY 22	18 TO 19	19 TO 20	20 TO 21	21 TO 22	19 TO 22
<b>Oct</b>	7,322,886	7,265,208	7,144,116	3,922,096	4,429,727	-0.8%	-1.7%	-45.1%	12.9%	-39.0%	-39.5%
<b>Nov</b>	7,005,032	6,783,315	6,610,671	3,672,591	4,436,825	-3.2%	-2.5%	-44.4%	20.8%	-34.6%	-36.7%
<b>Dec</b>	6,783,192	6,538,734	6,549,392	4,139,109	4,539,135	-3.6%	0.2%	-36.8%	9.7%	-30.6%	-33.1%
<b>Jan</b>	6,834,741	6,797,602	6,890,225	4,235,761	4,411,086	-0.5%	1.4%	-38.5%	4.1%	-35.1%	-35.5%
<b>Feb</b>	6,591,531	6,312,033	6,671,991	4,166,375	4,472,625	-4.2%	5.7%	-37.6%	7.4%	-29.1%	-32.1%
<b>Mar</b>	7,244,805	6,712,624	4,694,315	4,993,168	4,960,115	-7.3%	-30.1%	6.4%	-0.7%	-26.1%	-31.5%
<b>Apr</b>	6,869,802	6,802,085	1,989,545	4,883,356	4,743,830	-1.0%	-70.8%	145.5%	-2.9%	-30.3%	-30.9%
<b>May</b>	6,742,402	6,755,829	2,258,413	4,982,012	4,690,521	0.2%	-66.6%	120.6%	-5.9%	-30.6%	-30.4%
<b>Jun</b>	6,318,979	6,026,467	3,082,213	3,794,581	4,625,876	-4.6%	-48.9%	23.1%	21.9%	-23.2%	-26.8%
<b>Jul</b>	6,449,526	6,402,110	3,272,074	3,970,972	4,762,607	-0.7%	-48.9%	21.4%	19.9%	-25.6%	-26.2%
<b>Aug</b>	6,879,929	6,460,375	3,335,847	4,048,215	5,144,796	-6.1%	-48.4%	21.4%	27.1%	-20.4%	-25.2%
<b>Sep</b>	6,412,945	6,240,212	3,501,209	4,120,180		-2.7%	-43.9%	17.7%			
<b>FY Total</b>	<b>81,455,770</b>	<b>79,096,594</b>	<b>56,000,011</b>	<b>50,928,416</b>		<b>-2.9%</b>	<b>-29.2%</b>	<b>-9.1%</b>			

## TOTAL MONTHLY AND AVERAGE WEEKDAY RIDERSHIP YEAR OVER YEAR COMPARISON CHARTS – ALL MODES COMBINED



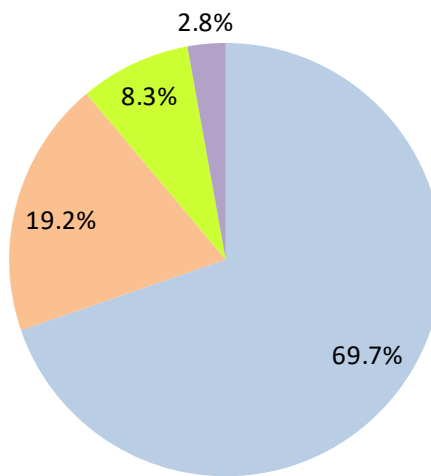
# AVERAGE WEEKDAY RIDERSHIP - MODAL SPLITS

August 2022



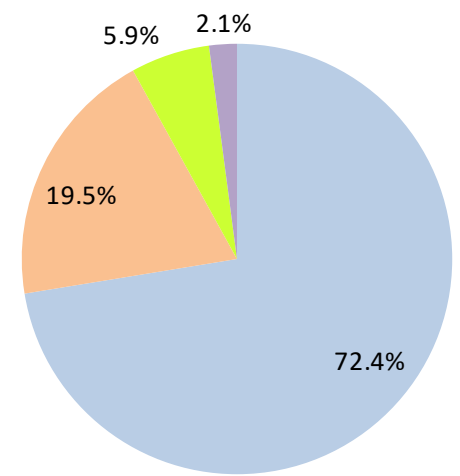
boardings

August 2021



boardings

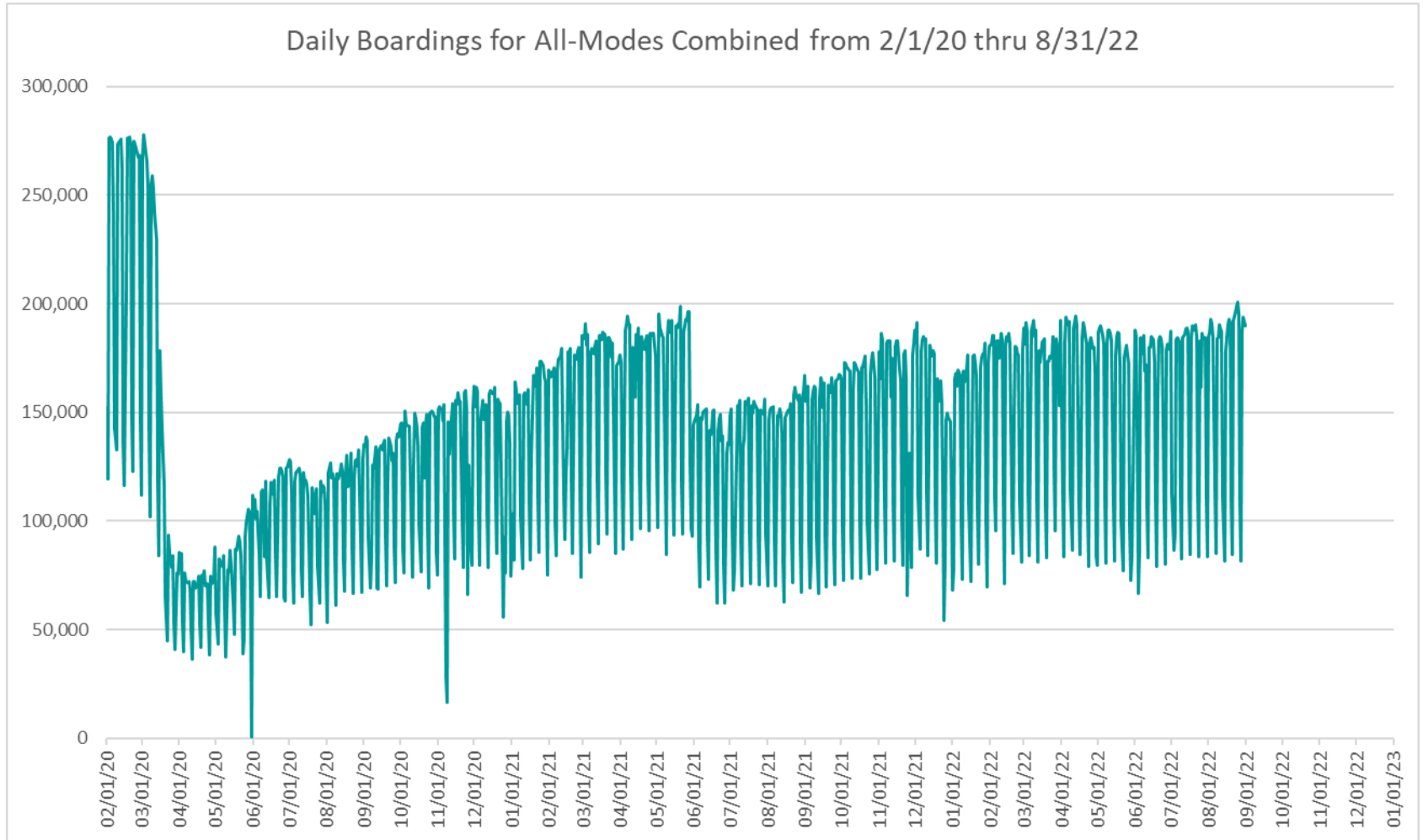
August 2020



boardings



## DAILY RIDERSHIP FOR ALL MODES COMBINED SINCE FEBRUARY 1, 2020



- (1) National Emergency was declared on 3/13/20 as a result of the SARS-CoV-2 pandemic.
- (2) There was no Metrobus, Metrorail and Metromover service on 5/31/20, as a safety precaution.
- (3) The dip at the start of the second week of November 2020 is due to Hurricane Eta.
- (4) The reduction seen beginning 6/1/21 is partly due to the resumption of fares for bus and rail, and partly the result of having resumed reporting Cubic farebox data rather than bus APC counts, as well as Cubic rail faregate counts instead of video camera counts on that date.
- (5) Periodic (weekly) variations are prominent, since weekday ridership is almost always significantly higher than weekend or holiday ridership.

# Metrobus



## METROBUS AVERAGE WEEKDAY BOARDINGS BY ROUTE (†)

Route <i>weekdays</i>	Average Weekday	Average Weekday	Percent Change	Average Weekday	Percent Change	Average Weekday	Percent Change	Average Weekday	Percent Change
	Aug-22	Aug-21	YOY	Feb-20	Current vs Feb-20	Jul-22	MOM	Aug-20	YO2Y
1 (*)	195	142	37.0%	184	5.8%	164	18.5%	178	9.2%
2	1,869	1,781	5.0%	3,102	-39.7%	1,811	3.2%	1,406	32.9%
3	3,576	3,844	-7.0%	5,137	-30.4%	3,795	-5.8%	2,951	21.2%
7	3,075	2,122	44.9%	3,501	-12.2%	2,982	3.1%	1,659	85.3%
8	3,412	3,409	0.1%	3,909	-12.7%	3,470	-1.7%	2,174	56.9%
9	4,243	4,607	-7.9%	5,528	-23.2%	4,138	2.5%	3,553	19.4%
10	1,602	1,471	8.9%	2,482	-35.4%	1,711	-6.4%	1,041	53.9%
11	6,393	5,728	11.6%	7,292	-12.3%	6,396	-0.1%	3,940	62.3%
12	1,941	1,617	20.0%	2,779	-30.2%	1,803	7.6%	1,749	11.0%
16	1,350	1,126	19.9%	1,862	-27.5%	1,410	-4.2%	925	45.9%
17	2,717	2,091	29.9%	3,878	-30.0%	2,591	4.8%	1,981	37.1%
19	980	784	24.9%	1,542	-36.5%	952	2.9%	707	38.6%
21	1,166	1,083	7.6%	1,817	-35.8%	1,193	-2.3%	1,349	-13.6%
22	2,863	2,228	28.5%	3,640	-21.3%	2,794	2.5%	2,130	34.4%
24 - Coral Way Limited	1,634	924	76.7%	1,340	21.9%	1,546	5.6%	1,024	59.6%
27	4,959	4,581	8.2%	6,972	-28.9%	4,887	1.5%	3,437	44.3%
29 (*)	396	279	41.9%	534	-25.9%	422	-6.2%	272	45.7%
31 - BUSWAY LOCAL	736	628	17.1%	1,089	-32.4%	707	4.1%	401	83.5%
32	1,786	1,373	30.1%	2,390	-25.3%	1,817	-1.7%	1,496	19.4%
33	1,348	947	42.4%	1,687	-20.1%	1,274	5.8%	802	68.2%
34 EXPRESS	1,046	761	37.5%	2,008	-47.9%	976	7.1%	694	50.7%
35	1,722	1,323	30.2%	2,421	-28.8%	1,575	9.3%	1,360	26.6%
36	1,958	1,597	22.6%	2,536	-22.8%	1,998	-2.0%	1,401	39.8%
37	2,506	2,364	6.0%	3,273	-23.4%	2,387	5.0%	1,801	39.2%
38	4,166	3,635	14.6%	6,361	-34.5%	4,007	4.0%	3,056	36.3%
39 EXPRESS		140		893				123	
40	1,549	1,112	39.4%	1,772	-12.6%	1,461	6.1%	816	90.0%
42	649	584	11.2%	820	-20.8%	716	-9.3%	536	21.1%
46 - LIBERTY CITY CONN. (*)	15	14	8.0%	41	-63.6%	14	5.9%	19	-21.6%
51 - FLAGLER MAX	2,917	2,141	36.2%	3,109	-6.2%	2,760	5.7%	1,417	105.9%
52	921	789	16.8%	1,261	-27.0%	874	5.5%	655	40.6%
54	2,180	1,888	15.5%	2,940	-25.9%	2,169	0.5%	2,250	-3.1%
55 MARLINS SHUTTLE									
56 (*)	309	226	36.9%	354	-12.6%	307	0.5%	135	129.4%
57	330	268	23.2%	433	-23.8%	315	4.8%	229	44.1%
62	1,225	1,172	4.6%	1,815	-32.5%	1,171	4.7%	1,447	-15.4%
71 (*)	579	373	55.1%	711	-18.5%	562	2.9%	305	89.9%
72 (*)	589	415	41.8%	781	-24.7%	567	3.9%	337	74.9%

(†) In this table and those which follow, "YOY" stands for "year-over-year", "MOM" for "month-over-month" and "YO2Y" for "year over two years", i.e., current month vs 12 months prior, one month prior, and 24 months prior, respectively.

(\*) Contracted routes



## METROBUS AVERAGE WEEKDAY BOARDINGS BY ROUTE

Route <i>weekdays</i>	Average Weekday	Average Weekday	Percent Change	Average Weekday	Percent Change	Average Weekday	Percent Change	Average Weekday	Percent Change
	Aug-22	Aug-21	YOY	Feb-20	Current vs Feb-20	Jul-22	MOM	Aug-20	YOY2Y
73	2,352	1,420	65.7%	2,124	10.7%	2,240	5.0%	1,053	123.4%
75	846	788	7.4%	1,429	-40.8%	720	17.6%	630	34.4%
77	5,658	5,296	6.8%	7,129	-20.6%	5,712	-1.0%	3,769	50.1%
79 STREET MAX	287			361	-20.7%	268	7.1%		
82 - WESTCHESTER CIRC. (*)	60	30	98.1%	62	-2.5%	61	-1.1%	29	106.7%
87	1,475	973	51.7%	1,499	-1.6%	1,410	4.6%	641	130.3%
88	1,807	1,902	-5.0%	2,076	-13.0%	1,732	4.4%	1,202	50.4%
93 - BISCAYNE MAX	2,247	1,711	31.3%	3,334	-32.6%	2,306	-2.6%	1,296	73.3%
95 EXPRESS	829	445	86.2%	1,690	-50.9%	728	13.9%	294	182.1%
99	1,227	948	29.5%	1,473	-16.6%	1,190	3.2%	799	53.6%
101 - A (*)	204	121	68.7%	177	15.1%	185	10.0%	88	132.1%
102 - B	1,410	1,227	15.0%	1,778	-20.7%	1,325	6.5%	855	64.9%
103 - C		203		463				603	
104	625	535	17.0%	837	-25.3%	558	12.0%	213	194.2%
105 - E	1,052	857	22.7%	1,287	-18.3%	1,107	-5.0%	724	45.4%
107 - G	1,473	1,110	32.6%	1,713	-14.0%	1,407	4.7%	693	112.5%
108 - H	345	268	28.8%	473	-26.9%	359	-3.7%	363	-4.9%
110 - J	2,138	1,747	22.4%	2,508	-14.8%	2,016	6.1%	1,546	38.2%
112 - L	6,336	6,330	0.1%	7,636	-17.0%	6,191	2.4%	5,649	12.2%
113 - M	538	393	36.9%	866	-37.9%	509	5.6%	441	22.0%
115 (*)	134	136	-1.4%	180	-25.5%	130	3.3%	202	-33.6%
119 - S	6,929	6,761	2.5%	8,970	-22.7%	6,851	1.1%	6,027	15.0%
120 - BEACH MAX	5,116	3,777	35.5%	6,667	-23.3%	5,007	2.2%	3,556	43.9%
132 TRI-RAIL (DORAL)	5	13	-59.2%	16	-65.5%	5	-0.2%	10	-44.7%
135	898	565	59.0%	1,399	-35.8%	850	5.7%	572	57.0%
136	106	102	4.2%	126	-15.6%	101	5.7%	64	65.4%
137 - WESTDADE CONN.	1,542	903	70.7%	1,626	-5.2%	1,447	6.6%	841	83.3%
150 - MIAMI BEACH AIRPORT FLYER	1,597	960	66.3%	1,867	-14.5%	1,426	12.0%	748	113.4%
155 - BISCAYNE GARDENS CIRCULATOR (*)	36	25	44.3%	44	-18.1%	38	-4.0%	31	16.8%
175 - NW MIAMI-DADE EXPRESS				33					
183	2,281	1,848	23.4%	3,149	-27.6%	2,139	6.6%	1,955	16.7%
195 EXPRESS - BROWARD BLVD				372					
196 EXPRESS - SHERIDAN ST				383					
200 - CUTLER BAY LOCAL	106	74	44.3%	158	-32.5%	118	-9.5%	71	49.9%
202 - LITTLE HAITI CONN. (*)	107	84	28.1%	140	-23.3%	109	-1.4%	104	3.2%
204 KILLIAN KAT	473			1,071	-55.8%	460	2.8%		

## METROBUS AVERAGE WEEKDAY BOARDINGS BY ROUTE

Route <b>weekdays</b>	Average Weekday	Average Weekday	Percent Change	Average Weekday	Percent Change	Average Weekday	Percent Change	Average Weekday	Percent Change
	Aug-22	Aug-21	YOY	Feb-20	Current vs Feb-20	Jul-22	MOM	Aug-20	YO2Y
207 (7st) - LITTLE HAVANA CIRC	1,139	725	57.1%	1,489	-23.5%	991	15.0%	803	41.9%
208 (8st) - LITTLE HAVANA CIRC	1,041	775	34.3%	1,308	-20.4%	990	5.2%	894	16.4%
210 - SKYLAKE CIRC (*)	293	261	12.3%	282	3.9%	277	5.6%	181	61.9%
211 - OVERTOWN CIRC. (*)	86	34	153.2%	58	47.6%	86	-1.0%	39	117.2%
212 - SWEETWATER CIRC. (*)	23	31	-25.6%	15	56.2%	25	-7.3%	12	96.7%
217 - BUNCHE PARK CIRC (*)	64	40	60.4%	97	-33.9%	70	-8.3%	64	1.1%
238 EAST/WEST CONN.	432	252	71.5%	449	-3.9%	399	8.2%	177	143.8%
241 TUTTLE LIMITED	74					87	-15.9%		
246 - NIGHT OWL	52	10	442.8%	94	-44.9%	50	3.6%	6	766.3%
248 - PRINCETON CIRCULATOR (*)	110	62	78.1%	135	-18.2%	97	13.0%	73	50.0%
252 - CORAL REEF MAX	650	434	49.7%	851	-23.6%	591	9.9%	448	45.0%
254 - BROWNSVILLE CIRC. (*)	8	7	21.0%	19	-57.9%	5	52.6%	16	-50.5%
267 - LUDLAM LIMITED (*)	144	100	44.4%	149	-3.0%	141	2.3%	79	82.1%
272 SUNSET KAT (*)	347	279	24.4%	550	-36.9%	333	4.3%	208	67.4%
277 - 7th AVENUE MAX	521	294	77.1%	683	-23.8%	461	13.0%	350	48.9%
286 - NORTH POINTE CIRC. (*)	63	34	89.5%	97	-34.6%	56	12.8%	21	202.3%
287 - SAGA BAY MAX	187	165	13.9%	358	-47.6%	184	1.6%	86	119.0%
288 - KENDALL CRUISER	298			762	-60.9%	284	5.0%		
295 EXPRESS - BROWARD BLVD - CIVIC CENTER				233					
296 EXPRESS - SHERIDAN ST - CIVIC CENTER				215					
297-27th AVENUE ORANGE MAX	791	600	31.9%	1,356	-41.6%	784	1.0%	621	27.4%
301 DADE-MONROE EXPRESS(*)	771	1,023	-24.7%	841	-8.4%	781	-1.3%	715	7.8%
302 CARD SOUND EXPRESS(*)	77	81	-4.1%	86	-10.4%	82	-5.1%	47	63.2%
344 (*)	52	51	2.8%	96	-45.7%	45	16.8%	50	4.5%
500	13	23	-43.3%	81	-83.8%	13	3.8%	2	645.2%
836 EXPRESS	147	96	52.7%			149	-1.2%		
GREEN HILLS SHUTTLE (*)	4	5	-25.9%	9	-55.6%	4	0.0%	5	-16.7%
KINGS CREEK SHUTTLE (*)	20	10	102.5%	13	55.8%	20	1.3%	4	376.5%
SIERRALAKES SHUTTLE (*)	18	17	6.0%	45	-60.6%	20	-10.4%	19	-5.3%
ROBERT SHARP SHUTTLE (*)	15	18	-18.9%	10	53.7%	31	-52.5%	22	-33.6%
AHEPA SHUTTLE (*)	17	19	-10.7%	21	-19.3%	17	0.0%	19	-13.0%
<b>Total</b>	<b>126,601</b>	<b>106,560</b>	<b>18.8%</b>	<b>167,711</b>	<b>-24.5%</b>	<b>123,497</b>	<b>2.5%</b>	<b>89,785</b>	<b>41.0%</b>

(\*) The following routes are entirely operated under contract: 1, 29, 46, 56, 71, 72, 82, 101-A, 115, 155, 202, 210, 211, 212, 217, 246, 248, 254, 267, 272, 286, 301, 302 and 344.

(1) Includes shuttles and those routes which were not run both years.

(2) Several express routes were suspended beginning at the end of March 2020, due to the SARS-CoV-2 pandemic, while other routes had alignment and schedule modifications made to them, in an ongoing effort to optimize service delivery.

## METROBUS AVERAGE SATURDAY BOARDINGS BY ROUTE

Route <b>Saturdays</b>	Average Saturday	Average Saturday	Percent Change	Average Saturday	Percent Change	Average Saturday	Percent Change	Average Saturday	Percent Change
	Aug-22	Aug-21	YOY	Feb-20	Current vs Feb-20	Jul-22	MOM	Aug-20	YO2Y
1 (*)	186	131	41.5%	215	-13.6%	181	2.4%	175	6.3%
2	1,059	1,244	-14.9%	1,616	-34.5%	1,098	-3.6%	1,008	5.1%
3	3,872	3,785	2.3%	5,229	-26.0%	4,189	-7.6%	2,863	35.3%
7	1,797	1,214	48.0%	1,887	-4.8%	1,697	5.9%	993	80.9%
8	1,974	1,684	17.2%	2,027	-2.7%	2,092	-5.7%	1,771	11.4%
9	2,685	2,483	8.1%	3,034	-11.5%	2,702	-0.6%	2,366	13.5%
10	1,497	1,370	9.3%	1,896	-21.0%	1,356	10.4%	1,053	42.1%
11	4,936	4,012	23.0%	5,182	-4.8%	4,934	0.0%	3,421	44.3%
16	1,195	1,116	7.1%	1,566	-23.7%	1,273	-6.1%	988	20.9%
17	1,755	1,527	14.9%	2,363	-25.8%	1,837	-4.5%	1,342	30.7%
22	1,808	1,346	34.3%	2,084	-13.2%	1,794	0.8%	1,381	30.9%
24 - Coral Way Limited	1,069	501	113.5%	1,165	-8.3%	1,167	-8.4%	865	23.6%
27	3,335	2,654	25.6%	4,034	-17.3%	3,278	1.7%	2,588	28.8%
31 - BUSWAY LOCAL	656	473	38.6%	896	-26.8%	641	2.3%	512	28.2%
32	854	681	25.4%	1,029	-17.0%	751	13.8%	813	5.0%
33	824	580	42.1%	951	-13.3%	897	-8.2%	531	55.1%
35	1,019	704	44.8%	1,372	-25.7%	1,126	-9.5%	866	17.7%
36	930	926	0.5%	1,289	-27.9%	1,141	-18.5%	1,142	-18.6%
37	1,618	1,434	12.8%	2,090	-22.6%	1,623	-0.3%	1,319	22.7%
38	3,121	3,068	1.7%	4,715	-33.8%	3,024	3.2%	2,346	33.0%
40	550	460	19.5%	655	-16.1%	577	-4.7%	375	46.7%
42	438	388	12.8%	552	-20.7%	512	-14.5%	366	19.6%
52	460	373	23.3%	686	-32.9%	525	-12.3%	335	37.2%
54	1,403	1,132	23.9%	1,727	-18.8%	1,463	-4.1%	1,573	-10.8%
55 MARLINS SHUTTLE									
62	958	830	15.5%	1,343	-28.7%	932	2.8%	1,216	-21.2%
71 (*)	237	149	59.4%	252	-6.0%	252	-5.9%	136	74.6%
72 (*)	373	341	9.5%	350	6.7%	312	19.7%	198	88.0%
73	1,006	631	59.4%	860	16.9%	928	8.3%	551	82.5%
75	319	350	-9.0%	468	-31.9%	326	-2.2%	349	-8.8%
77	3,382	3,186	6.2%	4,197	-19.4%	3,930	-13.9%	3,059	10.6%
87	529	335	57.9%	402	31.3%	459	15.1%	286	85.0%
88	1,259	1,200	4.9%	1,620	-22.3%	1,167	7.9%	798	57.7%
99	659	619	6.5%	849	-22.4%	790	-16.6%	450	46.4%

## METROBUS AVERAGE SATURDAY BOARDINGS BY ROUTE

Route <b>Saturdays</b>	Average Saturday	Average Saturday	Percent Change	Average Saturday	Percent Change	Average Saturday	Percent Change	Average Saturday	Percent Change
	Aug-22	Aug-21	YOY	Feb-20	Current vs Feb-20	Jul-22	MOM	Aug-20	YO2Y
101 - A (*)	74	54	36.1%	71	3.8%	64	14.1%	42	75.8%
102 - B	543	438	24.0%	851	-36.2%	605	-10.2%	410	32.4%
103 - C		153		315				192	
104	338	205	64.7%	468	-27.8%	351	-3.8%	78	333.3%
105 - E	588	459	28.3%	619	-5.0%	610	-3.5%	362	62.3%
107 - G	867	823	5.4%	1,066	-18.7%	973	-10.9%	744	16.5%
108 - H	311	267	16.7%	372	-16.4%	323	-3.8%	284	9.4%
110 - J	1,714	1,315	30.3%	1,952	-12.2%	1,475	16.2%	1,213	41.3%
112 - L	5,144	4,158	23.7%	5,667	-9.2%	4,596	11.9%	4,957	3.8%
113 - M	351	304	15.5%	503	-30.3%	349	0.4%	282	24.5%
115 (*)	55	93	-41.1%	82	-33.4%	76	-28.0%	132	-58.4%
119 - S	5,607	4,530	23.8%	6,861	-18.3%	5,600	0.1%	4,383	27.9%
120 - BEACH MAX	3,645	2,831	28.7%	4,744	-23.2%	3,620	0.7%	2,958	23.2%
135	437	200	118.9%	539	-18.9%	323	35.2%	252	73.6%
137 - WEST DADE CONN.	1,100	684	60.9%	1,027	7.1%	1,030	6.8%	489	125.0%
150 - MIAMI BEACH AIRPORT FLYER	1,586	854	85.7%	1,604	-1.1%	1,131	40.2%	709	123.5%
183	1,366	1,147	19.1%	1,790	-23.7%	1,486	-8.1%	1,258	8.6%
200 - CUTLER BAY LOCAL	88	47	86.7%	119	-26.4%	93	-5.3%	51	72.1%
202 - LITTLE HAITI CONN. (*)	42	56	-25.8%	50	-16.8%	39	7.1%	51	-18.1%
207 (7st) - LITTLE HAVANA CIRC	730	701	4.1%	1,032	-29.3%	599	21.7%	676	7.9%
208 (8st) - LITTLE HAVANA CIRC	845	713	18.5%	1,044	-19.1%	776	9.0%	872	-3.0%
210 - SKYLAKE CIRC (*)	116	119	-2.5%	165	-29.8%	162	-28.7%	136	-15.1%
241 TUTTLE LIMITED	40					39	1.8%		
246 - NIGHT OWL	44	1	4275.0%	84	-48.2%	54	-19.3%	5	851.1%
252 - CORAL REEF MAX	245	167	46.9%	302	-18.8%	271	-9.6%	154	59.5%
286 - NORTH POINTE CIRC. (*)	50	29	69.2%	41	21.3%	48	4.0%	27	84.7%
301 DADE-MONROE EXPRESS(*)	807	970	-16.8%	801	0.7%	699	15.5%	746	8.2%
302 CARD SOUND EXPRESS(*)	74	47	57.8%	57	30.3%	56	32.2%	30	145.8%
338 - WEEKEND EXPRESS	112	123	-8.9%	237	-52.6%	104	7.7%	61	83.4%
500	16			70	-77.1%	14	15.9%	9	70.2%
12/21 WEEKEND INTERL.	1,830	1,673	9.4%	2,528	-27.6%	1,925	-5.0%	2,278	-19.7%
FEDERATION GARDENS SHUTTLE (*)	27	19	41.3%	28	-6.7%	21	27.4%	23	16.2%
<b>Total</b>	<b>76,593</b>	<b>64,123</b>	<b>19.4%</b>	<b>93,742</b>	<b>-18.3%</b>	<b>76,525</b>	<b>0.1%</b>	<b>61,927</b>	<b>23.7%</b>

## METROBUS AVERAGE SUNDAY BOARDINGS BY ROUTE

Route <b>Sundays</b>	Average Sunday	Average Sunday	Percent Change	Average Sunday	Percent Change	Average Sunday	Percent Change	Average Sunday	Percent Change
	Aug-22	Aug-21	YOY	Feb-20	Current vs Feb-20	Jul-22	MOM	Aug-20	YO2Y
1 (*)	202	130	55.7%	201	0.5%	185	8.9%	128	57.4%
2	721	699	3.2%	1,335	-46.0%	748	-3.5%	620	16.3%
3	3,074	3,055	0.6%	4,353	-29.4%	3,190	-3.6%	2,526	21.7%
7	1,266	1,012	25.1%	1,654	-23.4%	1,225	3.4%	689	83.9%
8	1,550	1,235	25.5%	1,746	-11.2%	1,522	1.8%	931	66.6%
9	1,904	1,922	-0.9%	2,549	-25.3%	2,015	-5.5%	1,606	18.6%
10	1,022	1,103	-7.4%	1,441	-29.1%	1,082	-5.5%	732	39.7%
11	2,865	2,597	10.3%	3,917	-26.9%	3,152	-9.1%	2,061	39.0%
16	719	699	2.9%	997	-27.8%	727	-1.1%	584	23.0%
17	1,346	1,113	21.0%	1,833	-26.6%	1,251	7.6%	1,197	12.5%
22	1,215	1,011	20.1%	1,548	-21.5%	1,269	-4.3%	902	34.7%
24 - Coral Way Limited	761	688	10.6%	905	-15.8%	833	-8.6%	466	63.3%
27	1,903	1,704	11.7%	2,918	-34.8%	1,934	-1.6%	1,916	-0.7%
31 - BUSWAY LOCAL	398	365	9.1%	715	-44.3%	439	-9.3%	332	19.7%
32	545	378	44.1%	772	-29.5%	524	4.0%	800	-31.9%
33	517	382	35.4%	607	-14.8%	543	-4.8%	381	35.6%
35	762	606	25.8%	942	-19.1%	715	6.6%	765	-0.5%
36	833	809	3.0%	1,111	-25.0%	912	-8.6%	892	-6.6%
37	1,377	1,049	31.3%	1,739	-20.8%	1,153	19.4%	976	41.1%
38	2,642	2,621	0.8%	4,147	-36.3%	2,697	-2.0%	2,409	9.7%
40	375	301	24.3%	447	-16.2%	356	5.4%	248	51.4%
42	291	212	37.0%	416	-30.0%	296	-1.7%	244	19.1%
52	372	258	44.3%	466	-20.2%	331	12.5%	321	15.9%
54	953	767	24.3%	1,171	-18.6%	856	11.4%	899	6.0%
55 MARLINS SHUTTLE									
62	520	580	-10.5%	891	-41.7%	557	-6.8%	805	-35.5%
71 (*)	181	98	85.3%	162	11.9%	164	10.9%	99	83.8%
72 (*)	347	241	44.3%	265	31.3%	273	27.2%	129	168.4%
73	374	317	18.0%	495	-24.5%	452	-17.3%	292	28.2%
75	215	185	16.1%	271	-20.5%	227	-5.0%	205	5.2%
77	2,668	2,104	26.8%	2,815	-5.2%	2,910	-8.3%	1,752	52.3%
87	285	199	43.4%	319	-10.7%	240	18.8%	156	82.7%
88	935	848	10.2%	1,286	-27.3%	991	-5.7%	623	50.0%
99	526	509	3.3%	658	-20.1%	587	-10.4%	381	38.1%

## METROBUS AVERAGE SUNDAY BOARDINGS BY ROUTE

Route <b>Sundays</b>	Average Sunday	Average Sunday	Percent Change	Average Sunday	Percent Change	Average Sunday	Percent Change	Average Sunday	Percent Change
	Aug-22	Aug-21	YOY	Feb-20	Current vs Feb-20	Jul-22	MOM	Aug-20	YO2Y
101 - A (*)	36	34	4.5%	56	-35.6%	45	-19.7%	27	34.4%
102 - B	656	471	39.2%	717	-8.5%	619	5.8%	396	65.4%
103 - C		102		212				145	
104	238	143	66.7%	317	-25.0%	242	-1.7%	102	132.6%
105 - E	495	439	12.9%	616	-19.6%	506	-2.2%	375	32.1%
107 - G	693	641	8.1%	895	-22.6%	681	1.7%	463	49.6%
108 - H	301	195	54.5%	328	-8.3%	286	5.4%	177	69.9%
110 - J	1,140	943	20.9%	1,638	-30.4%	1,140	0.0%	964	18.3%
112 - L	3,901	3,241	20.4%	4,804	-18.8%	3,632	7.4%	2,994	30.3%
113 - M	242	244	-1.1%	431	-43.9%	265	-8.9%	201	19.9%
115 (*)	55	97	-43.3%	80	-30.9%	73	-24.7%	103	-46.3%
119 - S	5,313	4,666	13.9%	7,141	-25.6%	5,415	-1.9%	4,515	17.7%
120 - BEACH MAX	2,420	1,834	32.0%	3,469	-30.2%	2,210	9.5%	1,665	45.4%
135	157	193	-18.7%	349	-55.0%	187	-16.2%	163	-3.8%
137 - WEST DADE CONN.	796	523	52.3%	879	-9.5%	766	3.8%	424	87.8%
150 - MIAMI BEACH AIRPORT FLYER	1,375	819	67.9%	1,574	-12.6%	1,247	10.3%	737	86.5%
183	984	971	1.3%	1,413	-30.3%	1,160	-15.1%	982	0.2%
200 - CUTLER BAY LOCAL	48	44	9.9%	59	-17.9%	30	60.0%	32	48.1%
202 - LITTLE HAITI CONN. (*)	40	54	-25.7%	39	2.6%	31	27.7%	42	-5.7%
207 (7st) - LITTLE HAVANA CIRC	510	413	23.6%	796	-35.9%	465	9.8%	482	5.8%
208 (8st) - LITTLE HAVANA CIRC	516	518	-0.3%	911	-43.4%	625	-17.5%	574	-10.1%
210 - SKYLAKE CIRC (*)	134	130	2.4%	143	-6.6%	147	-9.0%	85	56.3%
241 TUTTLE LIMITED	47					40	17.9%		
246 - NIGHT OWL	64	3	1812.5%	87	-26.7%	57	11.2%	1	5212.5%
252 - CORAL REEF MAX	200	124	62.0%	199	0.8%	183	9.4%	105	90.7%
301 DADE-MONROE EXPRESS (*)	691	998	-30.8%	751	-8.1%	671	2.9%	692	-0.2%
302 CARD SOUND EXPRESS (*)	68	75	-10.0%	57	18.4%	78	-13.3%	30	128.0%
338 - WEEKEND EXPRESS	173	130	32.7%	252	-31.3%	154	12.0%	61	183.6%
500	16			83	-80.4%	11	45.1%	2	577.1%
12/21 WEEKEND INTERL.	1,338	1,203	11.2%	2,048	-34.7%	1,355	-1.3%	2,004	-33.3%
<b>Total</b>	<b>56,308</b>	<b>49,043</b>	<b>14.8%</b>	<b>75,428</b>	<b>-25.3%</b>	<b>56,675</b>	<b>-0.6%</b>	<b>45,612</b>	<b>23.4%</b>

## METROBUS TOTAL MONTHLY BOARDINGS BY ROUTE

Route <b>Monthly Total</b>	Total Month	Total Month	Percent Change	Total Month	Percent Change	Total Month	Percent Change	Total Month	Percent Change
	Aug-22	Aug-21	YOY	Feb-20	Current vs Feb-20	Jul-22	MOM	Aug-20	YO2Y
1 (*)	6,026	4,297	40.2%	5,558	8.4%	5,304	13.6%	5,257	14.6%
2	50,108	47,646	5.2%	75,463	-33.6%	46,198	8.5%	37,668	33.0%
3	110,032	114,981	-4.3%	146,294	-24.8%	115,980	-5.1%	88,912	23.8%
7	82,967	56,600	46.6%	86,077	-3.6%	75,466	9.9%	43,245	91.9%
8	92,564	87,906	5.3%	95,295	-2.9%	89,003	4.0%	59,166	56.4%
9	115,940	120,891	-4.1%	135,924	-14.7%	108,361	7.0%	94,470	22.7%
10	46,923	43,358	8.2%	64,874	-27.7%	47,485	-1.2%	30,791	52.4%
11	178,232	155,044	15.0%	187,425	-4.9%	171,502	3.9%	110,149	61.8%
12	44,634	35,583	25.4%	55,585	-19.7%	36,065	23.8%	36,723	21.5%
16	38,713	32,728	18.3%	49,061	-21.1%	38,924	-0.5%	27,292	41.8%
17	74,889	57,672	29.9%	96,715	-22.6%	68,518	9.3%	54,305	37.9%
19	22,532	17,250	30.6%	30,847	-27.0%	19,045	18.3%	14,840	51.8%
21	26,811	23,827	12.5%	36,341	-26.2%	23,860	12.4%	28,333	-5.4%
22	77,947	59,454	31.1%	89,404	-12.8%	72,457	7.6%	56,144	38.8%
24 - Coral Way Limited	44,894	25,779	74.1%	36,237	23.9%	41,757	7.5%	28,153	59.5%
27	135,009	119,924	12.6%	171,282	-21.2%	125,732	7.4%	94,706	42.6%
29 (*)	9,104	6,138	48.3%	10,684	-14.8%	8,439	7.9%	5,705	59.6%
31 - BUSWAY LOCAL	21,146	17,543	20.5%	29,125	-27.4%	19,974	5.9%	12,645	67.2%
32	46,676	34,819	34.1%	56,027	-16.7%	43,233	8.0%	39,474	18.2%
33	36,373	25,058	45.2%	40,918	-11.1%	33,223	9.5%	21,396	70.0%
34 EXPRESS	24,059	16,738	43.7%	40,159	-40.1%	19,528	23.2%	14,573	65.1%
35	46,738	34,942	33.8%	59,041	-20.8%	41,426	12.8%	36,716	27.3%
36	52,087	42,880	21.5%	61,606	-15.5%	51,131	1.9%	39,581	31.6%
37	69,630	62,979	10.6%	82,870	-16.0%	62,774	10.9%	49,288	41.3%
38	118,863	105,345	12.8%	167,379	-29.0%	111,439	6.7%	87,944	35.2%
39 EXPRESS		3,077		17,853				2,581	
40	39,333	27,804	41.5%	40,497	-2.9%	34,232	14.9%	20,239	94.3%
42	17,849	15,465	15.4%	20,825	-14.3%	18,646	-4.3%	14,316	24.7%
46 - LIBERTY CITY CONN. (*)	341	302	12.9%	814	-58.1%	280	21.8%	397	-14.1%
51 - FLAGLER MAX	67,080	47,102	42.4%	62,186	7.9%	55,199	21.5%	29,751	125.5%
52	24,523	20,142	21.8%	30,522	-19.7%	22,081	11.1%	17,046	43.9%
54	59,564	49,902	19.4%	72,125	-17.4%	55,836	6.7%	59,602	-0.1%
55 MARLINS SHUTTLE									
56 (*)	7,106	4,964	43.2%	7,071	0.5%	6,147	15.6%	2,828	151.3%
57	7,595	5,896	28.8%	8,665	-12.3%	6,303	20.5%	4,811	57.9%
62	34,090	32,000	6.5%	46,582	-26.8%	31,413	8.5%	40,504	-15.8%
71 (*)	14,986	9,294	61.2%	16,118	-7.0%	13,487	11.1%	7,572	97.9%
72 (*)	16,421	11,698	40.4%	18,433	-10.9%	14,533	13.0%	8,709	88.6%

## METROBUS TOTAL MONTHLY BOARDINGS BY ROUTE

Route	Total Month	Total Month	Percent Change	Total Month	Percent Change	Total Month	Percent Change	Total Month	Percent Change
	Aug-22	Aug-21	YOY	Feb-20	Current vs Feb-20	Jul-22	MOM	Aug-20	YO2Y
<b>Monthly Total</b>									
73	59,617	35,337	68.7%	48,767	22.2%	52,161	14.3%	26,327	126.4%
75	21,600	19,669	9.8%	31,994	-32.5%	17,384	24.3%	15,994	35.1%
77	154,325	139,774	10.4%	174,833	-11.7%	151,356	2.0%	103,210	49.5%
79 STREET MAX	6,590			7,228	-8.8%	5,351	23.2%	0	#DIV/0!
82 - WESTCHESTER CIRC. (*)	1,572	749	109.9%	1,482	6.1%	1,416	11.0%	746	110.7%
87	37,183	23,728	56.7%	33,273	11.8%	31,936	16.4%	15,660	137.4%
88	50,342	50,875	-1.0%	54,772	-8.1%	46,416	8.5%	32,350	55.6%
93 - BISCAYNE MAX	51,677	37,645	37.3%	66,684	-22.5%	46,129	12.0%	27,220	89.8%
95 EXPRESS	19,071	9,799	94.6%	33,796	-43.6%	14,558	31.0%	6,172	209.0%
99	32,970	25,870	27.4%	36,325	-9.2%	31,262	5.5%	20,939	57.5%
101 - A (*)	5,122	3,043	68.3%	4,114	24.5%	4,293	19.3%	2,185	134.4%
102 - B	37,230	31,089	19.8%	42,683	-12.8%	33,236	12.0%	21,990	69.3%
103 - C		5,576		11,682				14,358	
104	16,685	13,293	25.5%	20,351	-18.0%	14,370	16.1%	5,365	211.0%
105 - E	28,530	22,890	24.6%	31,302	-8.9%	28,223	1.1%	18,884	51.1%
107 - G	40,113	30,927	29.7%	43,178	-7.1%	37,094	8.1%	20,588	94.8%
108 - H	10,394	7,940	30.9%	12,624	-17.7%	10,505	-1.1%	9,937	4.6%
110 - J	60,585	48,401	25.2%	66,481	-8.9%	54,522	11.1%	43,355	39.7%
112 - L	181,915	172,091	5.7%	200,268	-9.2%	168,588	7.9%	158,392	14.9%
113 - M	14,735	11,079	33.0%	21,548	-31.6%	13,521	9.0%	11,670	26.3%
115 (*)	3,525	3,851	-8.5%	4,334	-18.7%	3,416	3.2%	5,415	-34.9%
119 - S	203,058	190,188	6.8%	242,257	-16.2%	197,516	2.8%	171,066	18.7%
120 - BEACH MAX	141,929	103,584	37.0%	170,942	-17.0%	131,502	7.9%	97,789	45.1%
132 TRI-RAIL (DORAL)	86	224	-61.6%	312	-72.4%	70	22.9%	204	-57.8%
135 (*)	23,040	13,606	69.3%	32,067	-28.2%	19,742	16.7%	14,095	63.5%
136	2,449	2,249	8.9%	2,524	-3.0%	2,014	21.6%	1,352	81.1%
137 - WEST DADE CONN.	43,050	25,219	70.7%	41,167	4.6%	38,686	11.3%	22,233	93.6%
150 - MIAMI BEACH AIRPORT FLYER	48,574	28,640	69.6%	51,651	-6.0%	41,652	16.6%	22,952	111.6%
155 - BISCAYNE GARDENS CIRCULATOR (*)	830	550	50.9%	881	-5.8%	752	10.4%	649	27.9%
175 - NW MIAMI-DADE EXPRESS				661					
183	61,859	50,105	23.5%	77,570	-20.3%	57,170	8.2%	52,242	18.4%
195 EXPRESS - BROWARD BLVD				7,441					
196 EXPRESS - SHERIDAN ST				7,658					
200 - CUTLER BAY LOCAL	2,992	1,942	54.1%	3,984	-24.9%	2,015	48.5%	1,909	56.7%
202 - LITTLE HAITI CONN. (*)	2,789	2,333	19.5%	3,200	-12.8%	2,554	9.2%	2,646	5.4%
204 KILLIAN KAT	10,886			21,418	-49.2%	9,204	18.3%		



## METROBUS TOTAL MONTHLY BOARDINGS BY ROUTE

Route <b>Monthly Total</b>	Total Month	Total Month	Percent Change	Total Month	Percent Change	Total Month	Percent Change	Total Month	Percent Change
	Aug-22	Aug-21	YOY	Feb-20	Current vs Feb-20	Jul-22	MOM	Aug-20	YO2Y
207 (7st) - LITTLE HAVANA CIRC	31,155	20,819	49.6%	38,127	-18.3%	25,595	21.7%	22,647	37.6%
208 (8st) - LITTLE HAVANA CIRC	29,392	22,494	30.7%	35,018	-16.1%	27,424	7.2%	26,012	13.0%
210 - SKYLAKE CIRC (*)	7,729	6,862	12.6%	7,033	9.9%	7,236	6.8%	4,906	57.5%
211 - OVERTOWN CIRC. (*)	1,967	743	164.7%	1,159	69.7%	1,728	13.8%	827	137.8%
212 - SWEETWATER CIRC. (*)	530	681	-22.2%	295	79.7%	497	6.6%	246	115.4%
217 - BUNCHE PARK CIRC (*)	1,482	884	67.6%	1,949	-24.0%	1,405	5.5%	1,339	10.7%
238 EAST/WEST CONN.	9,930	5,538	79.3%	8,987	10.5%	7,982	24.4%	3,719	167.0%
241 TUTTLE LIMITED	2,036					2,181	-6.6%		
246 - NIGHT OWL	1,616	106	1424.5%	2,641	-38.8%	1,610	0.4%	154	949.4%
248 - PRINCETON CIRCULATOR (*)	2,532	1,360	86.2%	2,690	-5.9%	1,948	30.0%	1,541	64.3%
252 - CORAL REEF MAX	16,730	10,840	54.3%	19,325	-13.4%	14,278	17.2%	10,705	56.3%
254 - BROWNSVILLE CIRC. (*)	186	147	26.5%	384	-51.6%	106	75.5%	343	-45.8%
267 - LUDLAM LIMITED (*)	3,322	2,200	51.0%	2,978	11.6%	2,825	17.6%	1,666	99.4%
272 SUNSET KAT (*)	7,990	6,146	30.0%	11,004	-27.4%	6,661	20.0%	4,358	83.3%
277 - 7th AVENUE MAX	11,973	6,465	85.2%	13,669	-12.4%	9,217	29.9%	7,342	63.1%
286 - NORTH POINTE CIRC. (*)	1,658	854	94.1%	2,145	-22.7%	1,364	21.6%	575	188.3%
287 - SAGA BAY MAX	4,312	3,622	19.1%	7,160	-39.8%	3,689	16.9%	1,798	139.8%
288 - KENDALL CRUISER	6,854			15,249	-55.1%	5,677	20.7%		
295 EXPRESS - BROWARD BLVD - CIVIC CENTER				4,668					
296 EXPRESS - SHERIDAN ST - CIVIC CENTER				4,297					
297-27th AVENUE ORANGE MAX	18,204	13,200	37.9%	27,125	-32.9%	15,678	16.1%	13,051	39.5%
301 DADE-MONROE EXPRESS(*)	23,723	31,384	-24.4%	23,838	-0.5%	23,146	2.5%	22,203	6.8%
302 CARD SOUND EXPRESS(*)	2,343	2,335	0.3%	2,236	4.8%	2,376	-1.4%	1,293	81.2%
338 - WEEKEND EXPRESS	1,141	1,145	-0.3%	2,191	-47.9%	1,293	-11.8%	611	86.7%
344 (*)	1,198	1,115	7.4%	1,919	-37.6%	892	34.3%	1,047	14.4%
500	431	139	210.1%	2,301	-81.3%	378	14.0%	96	349.0%
836 EXPRESS	3,377	2,115	59.7%			2,973	13.6%		
12/21 WEEKEND INTERL.	12,669	12,708	-0.3%	20,830	-39.2%	17,755	-28.6%	21,414	-40.8%
GREEN HILLS SHUTTLE (*)	20	27	-25.9%	36	-44.4%	12	66.7%	24	-16.7%
KINGS CREEK SHUTTLE (*)	81	40	102.5%	52	55.8%	80	1.3%	17	376.5%
SIERRALAKES SHUTTLE (*)	71	67	6.0%	180	-60.6%	99	-28.3%	75	-5.3%
ROBERT SHARP SHUTTLE (*)	73	72	1.4%	38	92.1%	123	-40.7%	88	-17.0%
AHEPA SHUTTLE (*)	67	75	-10.7%	83	-19.3%	67	0.0%	77	-13.0%
FEDERATION GARDENSSHUTTLE (*)	106	75	41.3%	142	-25.4%	104	1.9%	114	-7.0%
<b>Total</b>	<b>3,442,006</b>	<b>2,843,552</b>	<b>21.0%</b>	<b>4,123,083</b>	<b>-16.5%</b>	<b>3,189,994</b>	<b>7.9%</b>	<b>2,422,014</b>	<b>42.1%</b>

## YEAR-OVER-YEAR BUS RIDERSHIP BY ROUTE SERVICE TYPE

Boardings by Service Type and Route	Average Weekday	Average Weekday	Percent Change	Average Saturday	Average Saturday	Percent Change	Average Sunday	Average Sunday	Percent Change	Total Monthly	Total Monthly	Percent Change
	Aug-22	Aug-21	22 vs 21	Aug-22	Aug-21	22 vs 21	Aug-22	Aug-21	22 vs 21	Aug-22	Aug-21	22 vs 21
<b>Directly Operated Express Routes (1)</b>												
34 EXPRESS	1,046	761	37.5%							24,059	16,738	43.7%
39 EXPRESS		140									3,077	
95-EXPRESS	829	445	86.2%							19,071	9,799	94.6%
150-MIAMI BEACH AIRPORT FLYER	1,597	960	66.3%	1,586	854	85.7%	1,375	819	67.9%	48,574	28,640	69.6%
175 - NW MIAMI-DADE EXPRESS												
195 EXPRESS - BROWARD BLVD												
196 EXPRESS - SHERIDAN ST												
295 EXPRESS - BROWARD BLVD - CIVIC CENTER												
296 EXPRESS - SHERIDAN ST - CIVIC CENTER												
204 KAT-KILLIAN	473									10,886		
288 KENDALL CRUISER	298									6,854		
338 - WEEKEND EXPRESS				112	123	-8.9%	173	130	32.7%	1,141	1,145	-0.3%
836 EXPRESS	147	96	52.7%							3,377	2,115	59.7%
<b>Subtotal Express Routes</b>	<b>4,390</b>	<b>2,403</b>	<b>82.7%</b>	<b>1,698</b>	<b>977</b>	<b>73.8%</b>	<b>1,548</b>	<b>949</b>	<b>63.1%</b>	<b>113,962</b>	<b>61,514</b>	<b>85.3%</b>
<b>Percentage of All Bus Routes</b>	<b>3.5%</b>	<b>2.3%</b>		<b>2.2%</b>	<b>1.5%</b>		<b>2.7%</b>	<b>1.9%</b>		<b>3.3%</b>	<b>2.2%</b>	
<b>Contracted Routes</b>												
1	195	142	37.0%	186	131	41.5%	202	130	55.7%	6,026	4,297	40.2%
29	396	279	41.9%							9,104	6,138	48.3%
35												
46 - LIBERTY CITY CONN.	15	14	8.0%							341	302	12.9%
56	309	226	36.9%							7,106	4,964	43.2%
71	579	373	55.1%	237	149	59.4%	181	98	85.3%	14,986	9,294	61.2%
72	589	415	41.8%	373	341	9.5%	347	241	44.3%	16,421	11,698	40.4%
82 - WESTCHESTER CIRC	60	30	98.1%	48	21	132.5%				1,572	749	109.9%
101 - A	204	121	68.7%	74	54	36.1%	36	34	4.5%	5,122	3,043	68.3%
115	134	136	-1.4%	55	93	-41.1%	55	97	-43.3%	3,525	3,851	-8.5%
155 - BISCAYNE GARDENS CIRC	36	25	44.3%							830	550	50.9%
202 - LITTLE HAITI CONN.	107	84	28.1%	42	56	-25.8%	40	54	-25.7%	2,789	2,333	19.5%
210 - SKYLAKE CIRC	293	261	12.3%	116	119	-2.5%	134	130	2.4%	7,729	6,862	12.6%
211-OVERTOWN CIRC	86	34	153.2%							1,967	743	164.7%
212-SWEETWATER CIRC	23	31	-25.6%							530	681	-22.2%
217 - BUNCHE PARK CIRC	64	40	60.4%							1,482	884	67.6%
248 - PRINCETON CIRCULATOR	110	62	78.1%							2,532	1,360	86.2%
254-BROWNSVILLE CIRC	8	7	21.0%							186	147	26.5%
286-NORTH POINTE CIRC	63	34	89.5%	50	29	69.2%				1,658	854	94.1%
344	52	51	2.8%							1,198	1,115	7.4%
<b>Subtotal Contracted Reg. &amp; Circ. Routes</b>	<b>3,322</b>	<b>2,363</b>	<b>40.6%</b>	<b>1,179</b>	<b>993</b>	<b>18.8%</b>	<b>995</b>	<b>784</b>	<b>26.9%</b>	<b>85,104</b>	<b>59,865</b>	<b>42.2%</b>
<b>Percentage of All Bus Routes</b>	<b>2.6%</b>	<b>2.2%</b>		<b>1.5%</b>	<b>1.5%</b>		<b>1.8%</b>	<b>1.6%</b>		<b>2.5%</b>	<b>2.1%</b>	

(1) Several express routes were suspended beginning at the end of March 2020, due to the SARS-CoV-2 pandemic, while other routes had alignment and schedule modifications made to them, in an ongoing effort to optimize service delivery..

## YEAR-OVER-YEAR BUS RIDERSHIP BY ROUTE SERVICE TYPE

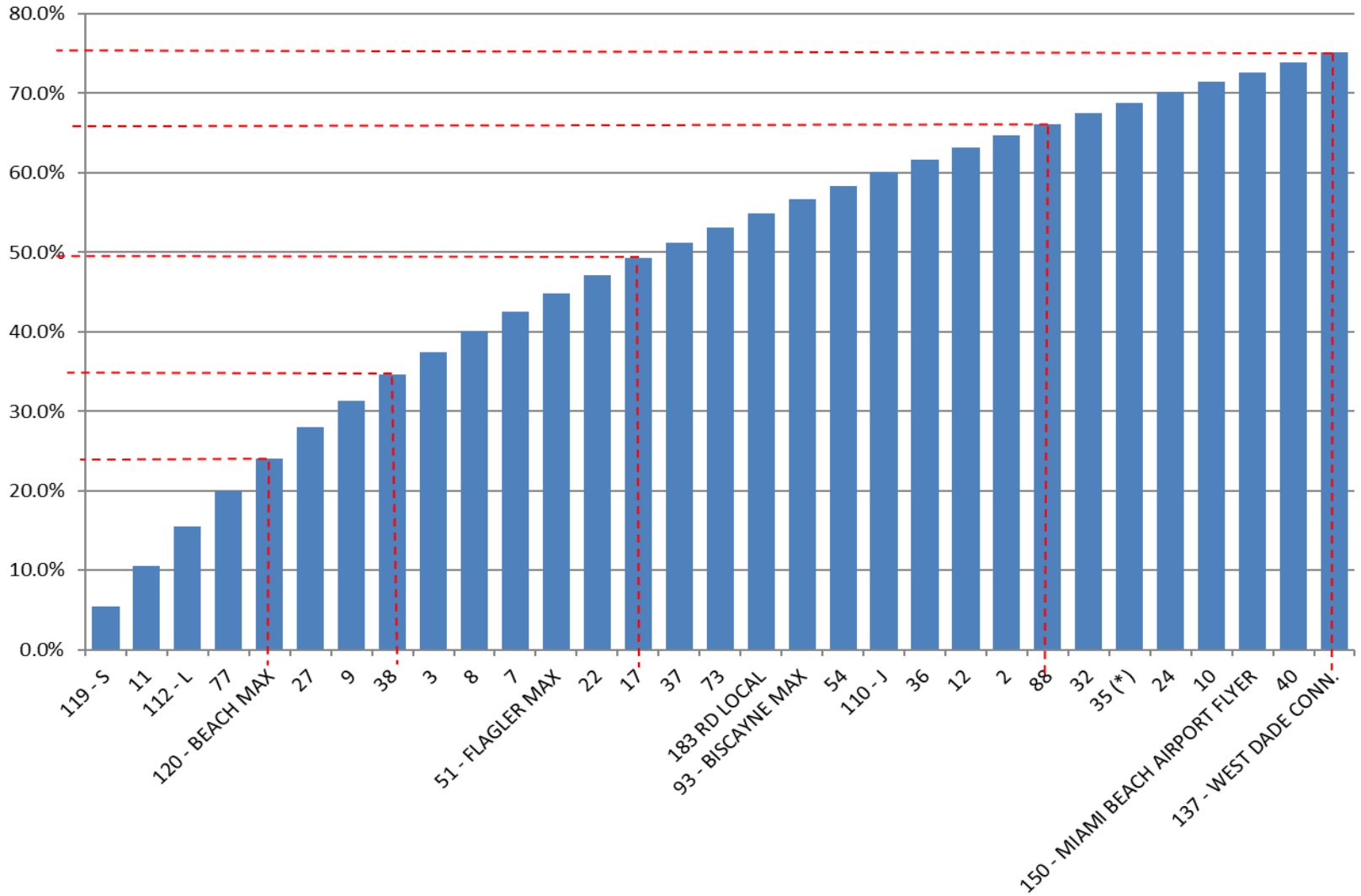
Boardings by Service Type and Route	Average Weekday	Average Weekday	Percent Change	Average Saturday	Average Saturday	Percent Change	Average Sunday	Average Sunday	Percent Change	Total Monthly	Total Monthly	Percent Change
	Aug-22	Aug-21	22 vs 21	Aug-22	Aug-21	22 vs 21	Aug-22	Aug-21	22 vs 21	Aug-22	Aug-21	22 vs 21
<b>Contracted Express Routes</b>												
272 SUNSET-KAT	347	279	24.4%							7,990	6,146	30.0%
301-DADE MONROE EXPRESS	771	1,023	-24.7%	807	970	-16.8%	691	998	-30.8%	23,723	31,384	-24.4%
302-CARD SOUND EXPRESS	77	81	-4.1%	74	47	57.8%	68	75	-10.0%	2,343	2,335	0.3%
<b>Subtotal Contracted Express Routes</b>	<b>1,196</b>	<b>1,383</b>	<b>-13.6%</b>	<b>881</b>	<b>1,017</b>	<b>-13.4%</b>	<b>758</b>	<b>1,073</b>	<b>-29.4%</b>	<b>34,056</b>	<b>39,865</b>	<b>-14.6%</b>
<b>Percentage of All Bus Routes</b>	<b>0.9%</b>	<b>1.3%</b>		<b>1.1%</b>	<b>1.6%</b>		<b>1.3%</b>	<b>2.2%</b>		<b>1.0%</b>	<b>1.4%</b>	
<b>Limited Stop Routes</b>												
24-CORAL WAY LIMITED	1,634	924	76.7%	1,069	501	113.5%	761	688	10.6%	44,894	25,779	74.1%
51-FLAGLER MAX	2,917	2,141	36.2%							67,080	47,102	42.4%
79 STREET MAX	287									6,590		
93 - BISCAYNE MAX	2,247	1,711	31.3%							51,677	37,645	37.3%
120 - BEACH MAX	5,116	3,777	35.5%	3,645	2,831	28.7%	2,420	1,834	32.0%	141,929	103,584	37.0%
241 TUTTLE LIMITED	74			40			47			2,036		
252-CORAL REEF MAX	650	434	49.7%	245	167	46.9%	200	124	62.0%	16,730	10,840	54.3%
267-LUDLAM LIMITED (contracted)	144	100	44.4%							3,322	2,200	51.0%
277-7TH AVENUE MAX	521	294	77.1%							11,973	6,465	85.2%
287-SAGA BAY MAX	187	165	13.9%							4,312	3,622	19.1%
297-27th AVENUE ORANGE MAX	791	600	31.9%							18,204	13,200	37.9%
<b>Subtotal Limited Stop Routes</b>	<b>14,567</b>	<b>10,146</b>	<b>43.6%</b>	<b>4,999</b>	<b>3,499</b>	<b>42.9%</b>	<b>3,429</b>	<b>2,646</b>	<b>29.6%</b>	<b>368,747</b>	<b>250,437</b>	<b>47.2%</b>
<b>Percentage of All Bus Routes</b>	<b>11.5%</b>	<b>9.5%</b>		<b>6.5%</b>	<b>5.5%</b>		<b>6.1%</b>	<b>5.4%</b>		<b>10.7%</b>	<b>8.8%</b>	
<b>Directly Operated Free Routes</b>												
132 -TRI-RAIL DORAL	5	13	-59.2%							86	224	-61.6%
200-CUTLER BAY LOCAL	106	74	44.3%	88	47	86.7%	48	44	9.9%	2,992	1,942	54.1%
<b>Subtotal Free Directly Operated Routes</b>	<b>112</b>	<b>87</b>	<b>28.6%</b>	<b>88</b>	<b>47</b>	<b>86.7%</b>	<b>48</b>	<b>44</b>	<b>9.9%</b>	<b>3,078</b>	<b>2,166</b>	<b>42.1%</b>
<b>Percentage of All Bus Routes</b>	<b>0.0%</b>	<b>0.0%</b>								<b>0.0%</b>	<b>0.0%</b>	
<b>Shuttles</b>												
55-MARLINS SHUTTLE												
<b>Percentage of All Bus Routes</b>												
<b>Contractor-Operated Lifeline Routes</b>												
GREEN HILLS SHUTTLE	4	5	-25.9%							20	27	-25.9%
KINGS CREEK SHUTTLE	20	10	102.5%							81	40	102.5%
SIERRA LAKES SHUTTLE	18	17	6.0%							71	67	6.0%
ROBERT SHARP SHUTTLE	15	18	-18.9%							73	72	1.4%
AHEPA SHUTTLE	17	19	-10.7%							67	75	-10.7%
FEDERATION GARDENS SHUTTLE				27	19	41.3%				106	75	41.3%
<b>Subtotal Contractor-Operated Lifeline Routes</b>	<b>73</b>	<b>69</b>	<b>6.5%</b>	<b>27</b>	<b>19</b>	<b>41.3%</b>				<b>418</b>	<b>356</b>	<b>17.4%</b>
<b>Percentage of All Bus Routes</b>	<b>0.1%</b>	<b>0.1%</b>		<b>0.0%</b>	<b>0.0%</b>					<b>0.0%</b>	<b>0.0%</b>	
<b>Other Circulator Route</b>												
200-CUTLER BAY LOCAL	106	74	44.3%	88	47	86.7%	48	44	9.9%	2,992	1,942	54.1%
<b>Percentage of All Bus Routes</b>	<b>0.1%</b>	<b>0.1%</b>		<b>0.1%</b>	<b>0.1%</b>		<b>0.1%</b>	<b>0.1%</b>		<b>0.1%</b>	<b>0.1%</b>	
<b>All Other (Regular) Routes</b>	<b>102,940</b>	<b>90,109</b>	<b>14.2%</b>	<b>67,723</b>	<b>57,572</b>	<b>17.6%</b>	<b>49,531</b>	<b>43,547</b>	<b>13.7%</b>	<b>2,836,641</b>	<b>2,429,349</b>	<b>16.8%</b>
<b>Percentage of All Bus Routes</b>	<b>81.3%</b>	<b>84.6%</b>		<b>88.4%</b>	<b>89.8%</b>		<b>88.0%</b>	<b>88.8%</b>		<b>82.4%</b>	<b>85.4%</b>	
<b>Total Bus System</b>	<b>126,601</b>	<b>106,560</b>	<b>18.8%</b>	<b>76,593</b>	<b>64,123</b>	<b>19.4%</b>	<b>56,308</b>	<b>49,043</b>	<b>14.8%</b>	<b>3,442,006</b>	<b>2,843,552</b>	<b>21.0%</b>

## Bus Routes as Ranked by Percentage of Average Weekday Ridership

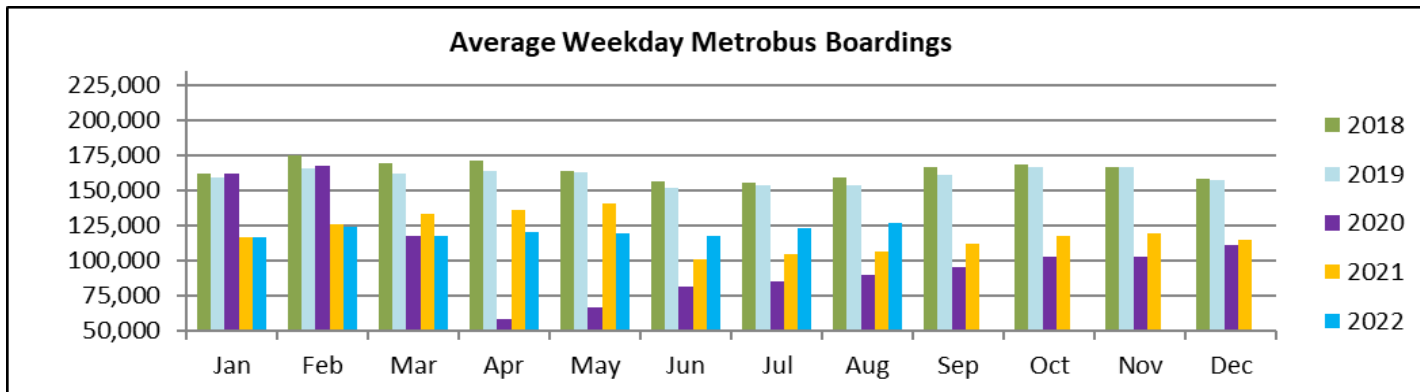
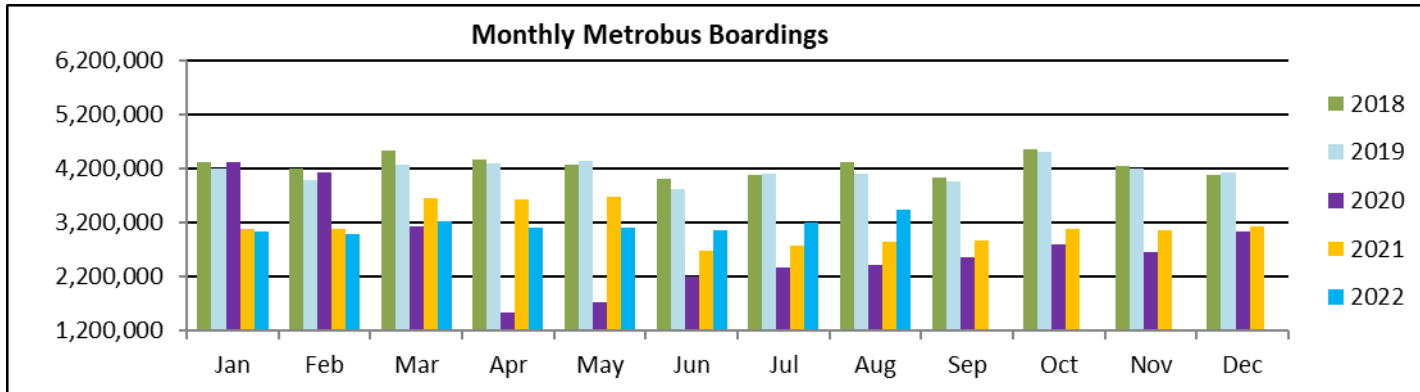
Rank	Route	Average Weekday	Percent Share	Cumul Pct Share	Rank	Route	Average Weekday	Percent Share	Cumul Pct Share	Rank	Route	Average Weekday	Percent Share	Cumul Pct Share
1	119	6,929	5.5%	5.5%	36	33	1,348	1.1%	80.7%	71	287	187	0.1%	98.8%
2	11	6,393	5.0%	10.5%	37	99	1,227	1.0%	81.6%	72	836	147	0.1%	98.9%
3	112	6,336	5.0%	15.5%	38	62	1,225	1.0%	82.6%	73	267	144	0.1%	99.0%
4	77	5,658	4.5%	20.0%	39	21	1,166	0.9%	83.5%	74	115	134	0.1%	99.1%
5	120	5,116	4.0%	24.0%	40	207	1,139	0.9%	84.4%	75	248	110	0.1%	99.2%
6	27	4,959	3.9%	28.0%	41	105	1,052	0.8%	85.3%	76	202	107	0.1%	99.3%
7	9	4,243	3.4%	31.3%	42	34	1,046	0.8%	86.1%	77	136	106	0.1%	99.4%
8	38	4,166	3.3%	34.6%	43	208	1,041	0.8%	86.9%	78	200	106	0.1%	99.4%
9	3	3,576	2.8%	37.4%	44	19	980	0.8%	87.7%	79	211	86	0.1%	99.5%
10	8	3,412	2.7%	40.1%	45	52	921	0.7%	88.4%	80	302	77	0.1%	99.6%
11	7	3,075	2.4%	42.5%	46	135	898	0.7%	89.1%	81	241	74	0.1%	99.6%
12	51	2,917	2.3%	44.8%	47	75	846	0.7%	89.8%	82	217	64	0.1%	99.7%
13	22	2,863	2.3%	47.1%	48	95	829	0.7%	90.4%	83	286	63	0.1%	99.7%
14	17	2,717	2.1%	49.3%	49	297	791	0.6%	91.1%	84	82	60	0.0%	99.8%
15	37	2,506	2.0%	51.2%	50	301	771	0.6%	91.7%	85	344	52	0.0%	99.8%
16	73	2,352	1.9%	53.1%	51	31	736	0.6%	92.3%	86	246	52	0.0%	99.9%
17	183	2,281	1.8%	54.9%	52	252	650	0.5%	92.8%	87	155	36	0.0%	99.9%
18	93	2,247	1.8%	56.7%	53	42	649	0.5%	93.3%	88	212	23	0.0%	99.9%
19	54	2,180	1.7%	58.4%	54	104	625	0.5%	93.8%	89	KC	20	0.0%	99.9%
20	110	2,138	1.7%	60.1%	55	72	589	0.5%	94.2%	90	SL	18	0.0%	99.9%
21	36	1,958	1.5%	61.6%	56	71	579	0.5%	94.7%	91	AS	17	0.0%	100.0%
22	12	1,941	1.5%	63.2%	57	113	538	0.4%	95.1%	92	46	15	0.0%	100.0%
23	2	1,869	1.5%	64.6%	58	277	521	0.4%	95.5%	93	RS	15	0.0%	100.0%
24	88	1,807	1.4%	66.1%	59	204	473	0.4%	95.9%	94	500	13	0.0%	100.0%
25	32	1,786	1.4%	67.5%	60	238	432	0.3%	96.2%	95	254	8	0.0%	100.0%
26	35	1,722	1.4%	68.8%	61	29	396	0.3%	96.6%	96	132	5	0.0%	100.0%
27	24	1,634	1.3%	70.1%	62	272	347	0.3%	96.8%	97	GH	4	0.0%	100.0%
28	10	1,602	1.3%	71.4%	63	108	345	0.3%	97.1%					
29	150	1,597	1.3%	72.7%	64	57	330	0.3%	97.4%					
30	40	1,549	1.2%	73.9%	65	56	309	0.2%	97.6%					
31	137	1,542	1.2%	75.1%	66	288	298	0.2%	97.8%					
32	87	1,475	1.2%	76.3%	67	210	293	0.2%	98.1%					
33	107	1,473	1.2%	77.4%	68	79	287	0.2%	98.3%					
34	102	1,410	1.1%	78.5%	69	101	204	0.2%	98.5%					
35	16	1,350	1.1%	79.6%	70	1	195	0.2%	98.6%					
												entirely contracted		
<b>Total Boardings</b>												<b>126,601</b>	<b>100.0%</b>	<b>100.0%</b>

(1) Average weekday ridership rounded to the nearest unit.  
(2) Includes the five Lifeline Shuttles that operate on weekdays: Ahepa, Green Hills, Kings Creek, Robert Sharp and Sierra Lakes.

**Bus - Cumulative Percentage Average Weekday Ridership Share  
Top 1/4, 1/3, 1/2, 2/3 and 3/4 of Routes**



## TOTAL MONTHLY AND AVERAGE WEEKDAY RIDERSHIP YEAR OVER YEAR COMPARISON CHARTS – METROBUS

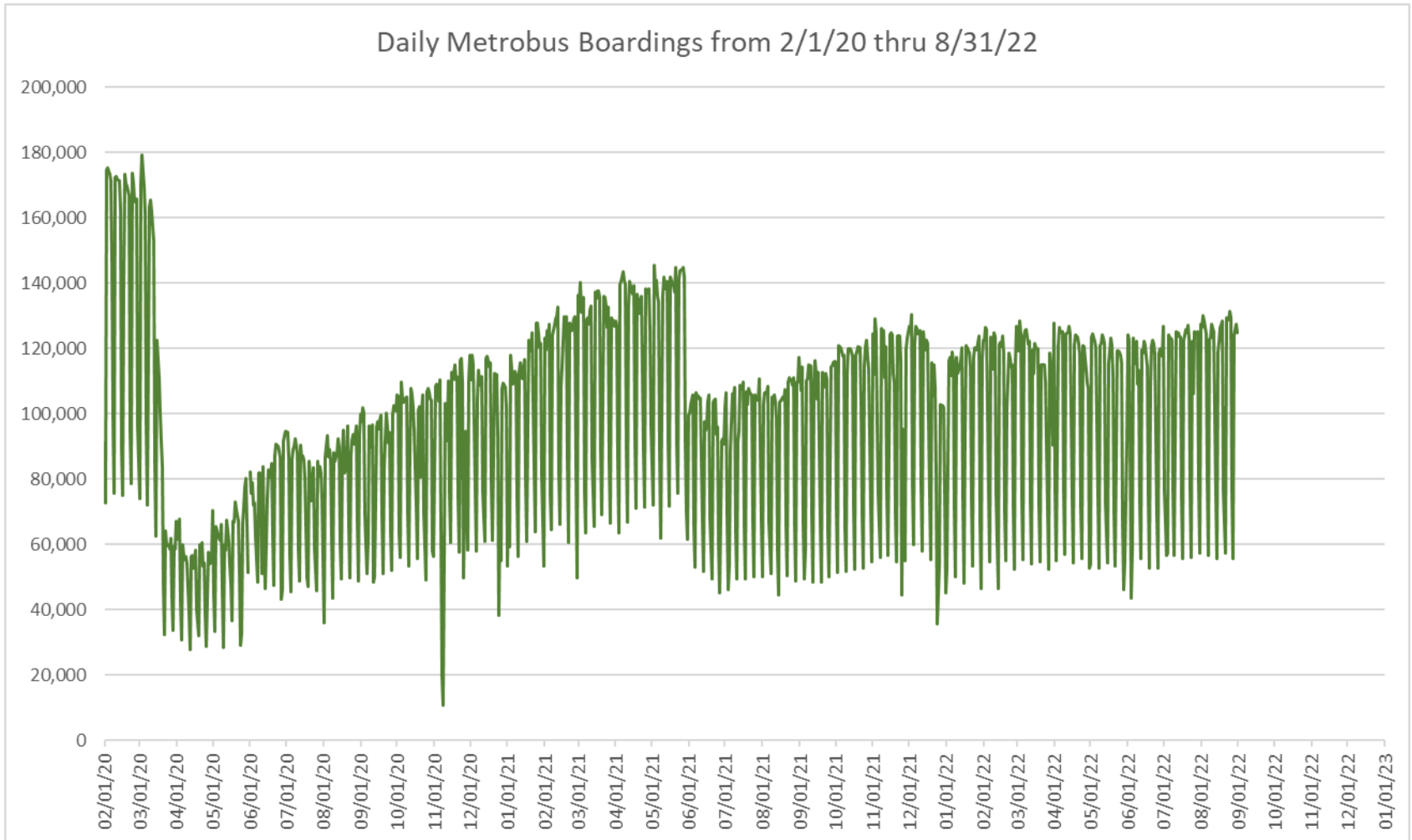


**“TOP 5 / BOTTOM 5” BUS ROUTES AVERAGE WEEKDAY RIDERSHIP PERFORMANCE  
YEAR OVER YEAR COMPARISONS**

<b>Route</b>	<b>Aug-22</b>	<b>Aug-21</b>	<b>Absolute Delta (1)</b>	<b>Percent Delta (2)</b>
<b>120 - BEACH MAX</b>	5,116	3,777	1,339	35.5%
<b>7</b>	3,075	2,122	952	44.9%
<b>73</b>	2,352	1,420	933	65.7%
<b>51 - FLAGLER MAX</b>	2,917	2,141	776	36.2%
<b>24</b>	1,634	924	709	76.7%
<b>9</b>	4,243	4,607	-364	-7.9%
<b>3</b>	3,576	3,844	-268	-7.0%
<b>301 DADE-MONROE EXPRESS (*)</b>	771	1,023	-252	-24.7%
<b>88</b>	1,807	1,902	-94	-5.0%
<b>500</b>	13	23	-10	-43.3%

- (1) Averages rounded to the nearest boarding, data as reported by NFS and/or APC system, depending on year; Lifelines excluded.  
(2) As a result of the SARS-CoV-2 pandemic, rides were fare-free beginning March 22, 2020; many bus routes continued reporting YOY gains in August 2022, since August 2021 showed clear reduction effects on ridership from the SARS-CoV-2 pandemic. Fares were reinstated June 1, 2021, and ridership data from the farebox system rather than the automatic passenger counter system is utilized from that date going forward.

## DAILY METROBUS RIDERSHIP SINCE FEBRUARY 1, 2020



- (1) National Emergency was declared on 3/13/20 as a result of the SARS-CoV-2 pandemic.
- (2) There was no Metrobus, Metrorail and Metromover service on 5/31/20, as a safety precaution.
- (3) The dip at the start of the second week of November 2020 is due to Hurricane Eta.
- (4) The reduction seen beginning 6/1/21 is partly due to the resumption of fares and partly the result of resuming reporting Cubic farebox data rather than bus APC counts.
- (5) Periodic (weekly) variations are prominent, since weekday ridership is almost always significantly higher than weekend or holiday ridership.



## METROBUS PARKING PATRONAGE SUMMARY

### August 2022

PARK-RIDE LOT	ACTUAL AVAILABLE SPACES	ACTUAL OCCUPANCY	PERCENT OCCUPANCY
Transitway / SW 152nd St	200	125	63%
Transitway / SW 168th St (*)	149	0	0%
Transitway / SW 200th Street (effective February 2020)	100	26	26%
Transitway / SW 112 Ave (Target)	450	119	26%
Transitway / SW 244th St	95	50	53%
Transitway / SW 296th St	139	16	12%
Transitway / SW 344th St	248	151	61%
Coral Reef Drive 117/ Turnpike	95	81	85%
Golden Glades Facility	2,150	312	15%
Hammocks Town Center (SW 152 Ave / SW 104 St)	50	15	30%
Kendall Dr./SW 127th Ave	161	13	8%
West Kendall Transit Term (Kendall Dr / SW162 Ave)	40	11	28%
NW 7th Avenue Transit Village (NW 7 Ave / NW 62 St)	25	20	80%
Miami Gardens Dr. / NW 73rd Ave	136	1	1%
Dolphin Station (effective Mar 2020)	348	78	22%
I-75 / Miami Gardens Dr (**)	298	0	0%
<b>TOTAL</b>	<b>4,684</b>	<b>1,018</b>	<b>22%</b>

(\*) Closed for construction beginning January 2022

(\*\*) Route 175 Suspended 3/27/2020

# Metrorail



August 2022

## METRORAIL AVERAGE WEEKDAY BOARDINGS BY STATION (†)

<b>Weekdays</b>	<b>Average Weekday</b>	<b>Average Weekday</b>	<b>Percent Change</b>	<b>Average Weekday</b>	<b>Percent Change</b>	<b>Average Weekday</b>	<b>Percent Change</b>	<b>Average Weekday</b>	<b>Percent Change</b>
<b>STATIONS</b>	<b>Aug-22</b>	<b>Aug-21</b>	<b>YOY</b>	<b>Feb-20</b>	<b>Current vs Feb-20</b>	<b>Jul-22</b>	<b>MOM</b>	<b>Aug-20</b>	<b>YO2Y</b>
ALLAPATTAH	1,430	941	52.0%	1,942	-26.3%	1,386	3.2%	933	53.4%
BRICKELL	4,267	3,072	38.9%	6,529	-34.6%	4,012	6.4%	3,044	40.2%
BROWNSVILLE	643	527	22.0%	862	-25.4%	623	3.2%	671	-4.2%
CIVIC CENTER	3,570	2,673	33.5%	6,143	-41.9%	3,402	4.9%	1,915	86.4%
COCONUT GROVE	1,265	953	32.7%	1,795	-29.5%	1,196	5.8%	639	98.1%
CULMER	857	674	27.3%	1,392	-38.4%	757	13.3%	782	9.5%
DADELAND NORTH	3,368	2,304	46.2%	5,926	-43.2%	3,148	7.0%	2,066	63.0%
DADELAND SOUTH	3,778	2,822	33.9%	7,150	-47.2%	3,609	4.7%	2,313	63.4%
DOUGLAS ROAD	2,526	1,781	41.8%	3,624	-30.3%	2,312	9.3%	966	161.4%
DR. MARTIN LUTHER KING, JR.	756	607	24.5%	1,157	-34.6%	757	-0.2%	714	5.8%
EARLINGTON HEIGHTS	1,169	797	46.7%	1,662	-29.6%	1,133	3.2%	722	62.0%
GOVERNMENT CENTER	5,581	3,966	40.7%	10,557	-47.1%	5,319	4.9%	2,693	107.2%
HIALEAH	998	694	43.9%	1,253	-20.3%	949	5.1%	743	34.3%
MIAMI INTERNATIONAL AIRPORT	1,070	665	60.8%	1,711	-37.5%	1,063	0.7%	518	106.5%
NORTHSIDE	1,155	836	38.2%	1,476	-21.7%	1,104	4.7%	873	32.3%
OKEECHOBEE	787	557	41.5%	1,164	-32.4%	744	5.8%	532	48.0%
OVERTOWN / ARENA	1,280	754	69.8%	2,274	-43.7%	1,266	1.1%	635	101.6%
PALMETTO	1,095	755	45.1%	1,543	-29.0%	1,044	5.0%	657	66.8%
SANTA CLARA	560	386	45.1%	812	-31.0%	561	-0.1%	433	29.5%
SOUTH MIAMI	1,728	1,278	35.2%	3,015	-42.7%	1,597	8.2%	864	100.0%
TRI-RAIL	934	690	35.3%	1,207	-22.6%	945	-1.1%	658	41.9%
UNIVERSITY	1,427	924	54.5%	2,784	-48.7%	1,066	33.9%	383	272.3%
VIZCAYA	951	635	49.9%	1,390	-31.6%	870	9.4%	479	98.5%
<b>TOTAL</b>	<b>41,197</b>	<b>29,290</b>	<b>40.7%</b>	<b>67,367</b>	<b>-38.8%</b>	<b>38,862</b>	<b>6.0%</b>	<b>24,234</b>	<b>70.0%</b>

(†) In this table and those which follow, "YOY" stands for "year-over-year", "MOM" for "month-over-month" and "YO2Y" for "year over two years", i.e., current month vs 12 months prior, one month prior and 24 months prior, respectively.

## METRORAIL AVERAGE SATURDAY BOARDINGS BY STATION

<b>Saturdays</b>	Average Saturday	Average Saturday	Percent Change	Average Saturday	Percent Change	Average Saturday	Percent Change	Average Saturday	Percent Change
STATIONS	Aug-22	Aug-21	YOY	Feb-20	Current vs Feb-20	Jul-22	MOM	Aug-20	YO2Y
ALLAPATTAH	822	562	46.3%	1,051	-21.8%	809	1.6%	641	28.3%
BRICKELL	2,067	1,562	32.3%	2,811	-26.5%	2,135	-3.2%	1,858	11.3%
BROWNSVILLE	393	330	19.1%	520	-24.4%	399	-1.5%	514	-23.6%
CIVIC CENTER	617	474	30.2%	959	-35.7%	631	-2.3%	525	17.5%
COCONUT GROVE	683	518	31.7%	928	-26.4%	643	6.1%	415	64.6%
CULMER	440	356	23.8%	721	-38.9%	428	2.9%	525	-16.1%
DADELAND NORTH	1,325	984	34.6%	1,994	-33.6%	1,241	6.7%	1,187	11.6%
DADELAND SOUTH	1,700	1,264	34.4%	2,625	-35.3%	1,729	-1.7%	1,474	15.3%
DOUGLAS ROAD	1,088	800	36.0%	1,319	-17.5%	1,107	-1.7%	659	65.0%
DR. MARTIN LUTHER KING, JR.	422	317	33.2%	625	-32.4%	441	-4.3%	512	-17.5%
EARLINGTON HEIGHTS	686	486	41.0%	935	-26.7%	687	-0.2%	514	33.4%
GOVERNMENT CENTER	2,434	1,764	38.0%	4,262	-42.9%	2,433	0.0%	1,640	48.4%
HIALEAH	494	348	41.9%	583	-15.3%	481	2.5%	454	8.7%
MIAMI INTERNATIONAL AIRPORT	908	536	69.4%	1,330	-31.7%	845	7.5%	450	101.7%
NORTHSIDE	704	534	32.0%	878	-19.8%	665	5.8%	655	7.4%
OKEECHOBEE	282	248	13.8%	408	-31.0%	294	-4.3%	284	-0.7%
OVERTOWN / ARENA	375	279	34.3%	678	-44.8%	470	-20.3%	348	7.7%
PALMETTO	339	227	49.4%	458	-25.9%	351	-3.4%	287	18.1%
SANTA CLARA	243	214	13.7%	422	-42.4%	327	-25.6%	283	-14.0%
SOUTH MIAMI	845	626	35.1%	1,256	-32.7%	840	0.6%	557	51.7%
TRI-RAIL	439	311	41.1%	614	-28.6%	475	-7.6%	373	17.6%
UNIVERSITY	491	368	33.5%	714	-31.3%	307	59.7%	212	131.8%
VIZCAYA	448	332	34.8%	622	-28.0%	424	5.6%	289	55.0%
<b>TOTAL</b>	<b>18,242</b>	<b>13,438</b>	<b>35.7%</b>	<b>26,714</b>	<b>-31.7%</b>	<b>18,164</b>	<b>0.4%</b>	<b>14,654</b>	<b>24.5%</b>

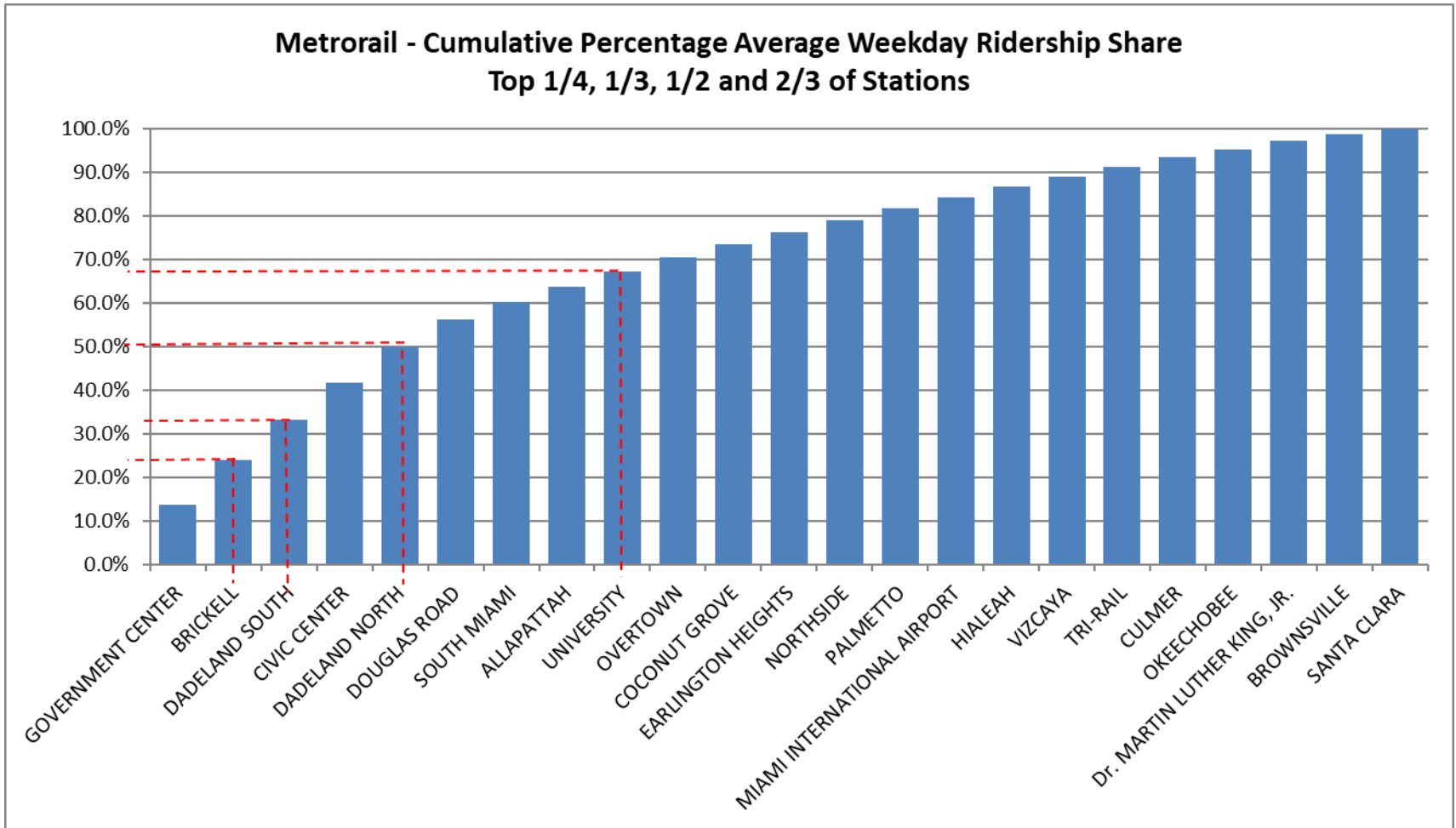
## METRORAIL AVERAGE SUNDAY BOARDINGS BY STATION

<b>Sundays</b>	<b>Average Sunday</b>	<b>Average Sunday</b>	<b>Percent Change</b>	<b>Average Sunday</b>	<b>Percent Change</b>	<b>Average Sunday</b>	<b>Percent Change</b>	<b>Average Sunday</b>	<b>Percent Change</b>
<b>STATIONS</b>	<b>Aug-22</b>	<b>Aug-21</b>	<b>YOY</b>	<b>Feb-20</b>	<b>Current vs Feb-20</b>	<b>Jul-22</b>	<b>MOM</b>	<b>Aug-20</b>	<b>YO2Y</b>
ALLAPATTAH	598	404	48.0%	791	-24.3%	604	-1.0%	450	33.1%
BRICKELL	1,681	1,239	35.7%	2,379	-29.3%	1,654	1.6%	1,611	4.3%
BROWNSVILLE	297	258	14.9%	406	-26.9%	314	-5.6%	426	-30.3%
CIVIC CENTER	503	364	38.2%	791	-36.4%	507	-0.7%	455	10.5%
COCONUT GROVE	523	376	39.1%	838	-37.6%	478	9.3%	385	35.9%
CULMER	330	302	9.3%	616	-46.5%	333	-1.1%	434	-24.0%
DADELAND NORTH	969	745	30.1%	1,685	-42.5%	878	10.3%	884	9.6%
DADELAND SOUTH	1,260	1,002	25.7%	2,210	-43.0%	1,298	-2.9%	1,180	6.7%
DOUGLAS ROAD	775	567	36.6%	1,090	-28.9%	748	3.6%	443	74.9%
DR. MARTIN LUTHER KING, JR.	331	235	40.5%	506	-34.7%	328	0.9%	377	-12.3%
EARLINGTON HEIGHTS	538	344	56.4%	799	-32.7%	512	5.1%	383	40.5%
GOVERNMENT CENTER	1,835	1,331	37.9%	4,044	-54.6%	1,859	-1.3%	1,343	36.6%
HIALEAH	360	257	40.3%	472	-23.6%	349	3.3%	316	14.1%
MIAMI INTERNATIONAL AIRPORT	877	539	62.8%	1,343	-34.7%	843	4.1%	483	81.5%
NORTHSIDE	538	423	27.2%	653	-17.5%	537	0.3%	512	5.0%
OKEECHOBEE	164	122	33.6%	273	-40.2%	167	-2.2%	184	-11.2%
OVERTOWN / ARENA	274	263	4.1%	544	-49.6%	400	-31.5%	387	-29.2%
PALMETTO	202	132	52.6%	336	-39.9%	193	4.9%	219	-7.6%
SANTA CLARA	206	143	43.7%	280	-26.5%	213	-3.3%	191	7.7%
SOUTH MIAMI	619	476	30.0%	987	-37.3%	601	2.9%	430	43.8%
TRI-RAIL	350	255	36.8%	528	-33.8%	317	10.3%	310	12.6%
UNIVERSITY	433	252	71.6%	608	-28.8%	247	75.0%	177	144.9%
VIZCAYA	336	258	30.1%	524	-35.9%	345	-2.5%	239	40.7%
<b>TOTAL</b>	<b>13,996</b>	<b>10,288</b>	<b>36.0%</b>	<b>22,701</b>	<b>-38.3%</b>	<b>13,724</b>	<b>2.0%</b>	<b>11,817</b>	<b>18.4%</b>

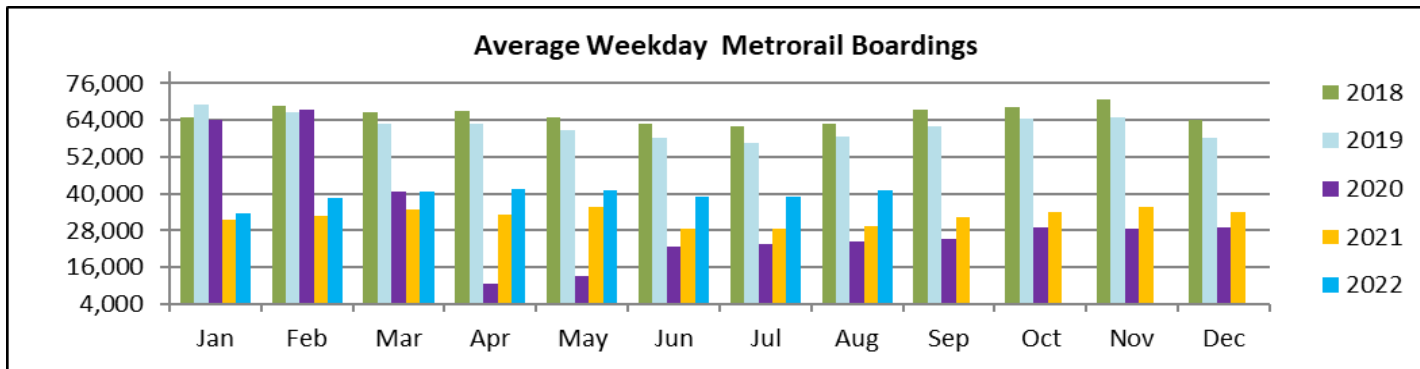
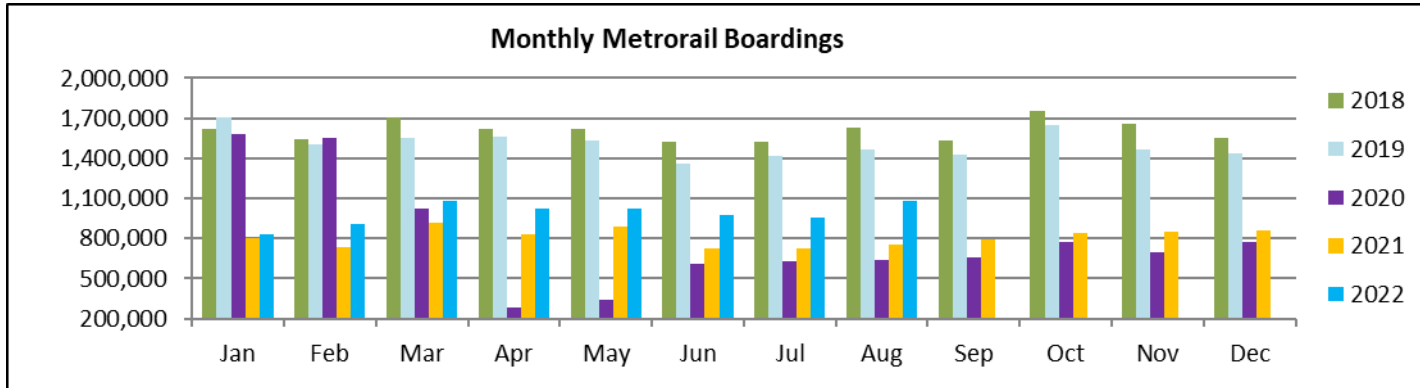
## METRORAIL TOTAL MONTHLY BOARDINGS BY STATION

<b>Monthly Totals</b>	Total Month	Total Month	Percent Change	Total Month	Percent Change	Total Month	Percent Change	Total Month	Percent Change
<b>STATIONS</b>	Aug-22	Aug-21	YOY	Feb-20	Current vs Feb-20	Jul-22	MOM	Aug-20	YO2Y
ALLAPATTAH	38,579	24,971	54.5%	46,868	-17.7%	35,475	8.7%	25,037	54.1%
BRICKELL	113,144	80,020	41.4%	152,259	-25.7%	101,071	11.9%	81,276	39.2%
BROWNSVILLE	17,545	14,207	23.5%	21,285	-17.6%	16,390	7.0%	18,792	-6.6%
CIVIC CENTER	86,580	62,520	38.5%	128,921	-32.8%	74,345	16.5%	45,115	91.9%
COCONUT GROVE	33,915	24,917	36.1%	43,580	-22.2%	30,081	12.7%	17,406	94.8%
CULMER	22,794	17,749	28.4%	33,497	-32.0%	19,330	17.9%	21,223	7.4%
DADELAND NORTH	86,642	58,348	48.5%	132,894	-34.8%	74,642	16.1%	53,746	61.2%
DADELAND SOUTH	98,740	72,162	36.8%	162,416	-39.2%	88,877	11.1%	61,835	59.7%
DOUGLAS ROAD	65,542	45,224	44.9%	82,141	-20.2%	56,346	16.3%	25,804	154.0%
DR. MARTIN LUTHER KING, JR.	20,396	15,800	29.1%	27,980	-27.1%	19,380	5.2%	19,440	4.9%
EARLINGTON HEIGHTS	31,781	21,192	50.0%	40,697	-21.9%	29,240	8.7%	19,639	61.8%
GOVERNMENT CENTER	145,428	100,960	44.0%	243,414	-40.3%	130,695	11.3%	71,472	103.5%
HIALEAH	26,367	17,935	47.0%	29,516	-10.7%	23,456	12.4%	19,453	35.5%
MIAMI INTERNATIONAL AIRPORT	31,752	19,478	63.0%	46,115	-31.1%	30,764	3.2%	15,550	104.2%
NORTHSIDE	31,532	22,641	39.3%	36,127	-12.7%	28,696	9.9%	24,167	30.5%
OKEECHOBEE	19,888	13,846	43.6%	26,026	-23.6%	17,445	14.0%	13,509	47.2%
OVERTOWN / ARENA	32,039	19,014	68.5%	49,911	-35.8%	30,098	6.4%	17,012	88.3%
PALMETTO	27,361	18,177	50.5%	33,944	-19.4%	23,821	14.9%	16,325	67.6%
SANTA CLARA	14,685	10,070	45.8%	19,245	-23.7%	14,157	3.7%	11,453	28.2%
SOUTH MIAMI	45,602	32,999	38.2%	69,412	-34.3%	39,801	14.6%	23,081	97.6%
TRI-RAIL	24,638	17,708	39.1%	29,120	-15.4%	23,208	6.2%	17,244	42.9%
UNIVERSITY	36,525	23,058	58.4%	61,253	-40.4%	24,375	49.8%	9,994	265.5%
VIZCAYA	25,015	16,582	50.9%	32,497	-23.0%	21,638	15.6%	12,702	96.9%
<b>TOTAL</b>	<b>1,076,490</b>	<b>749,578</b>	<b>43.6%</b>	<b>1,549,118</b>	<b>-30.5%</b>	<b>953,331</b>	<b>12.9%</b>	<b>641,275</b>	<b>67.9%</b>

# METRORAIL CUMULATIVE PERCENTAGE RIDERSHIP SHARE



# TOTAL MONTHLY AND AVERAGE WEEKDAY RIDERSHIP YEAR OVER YEAR COMPARISON CHARTS – METRORAIL



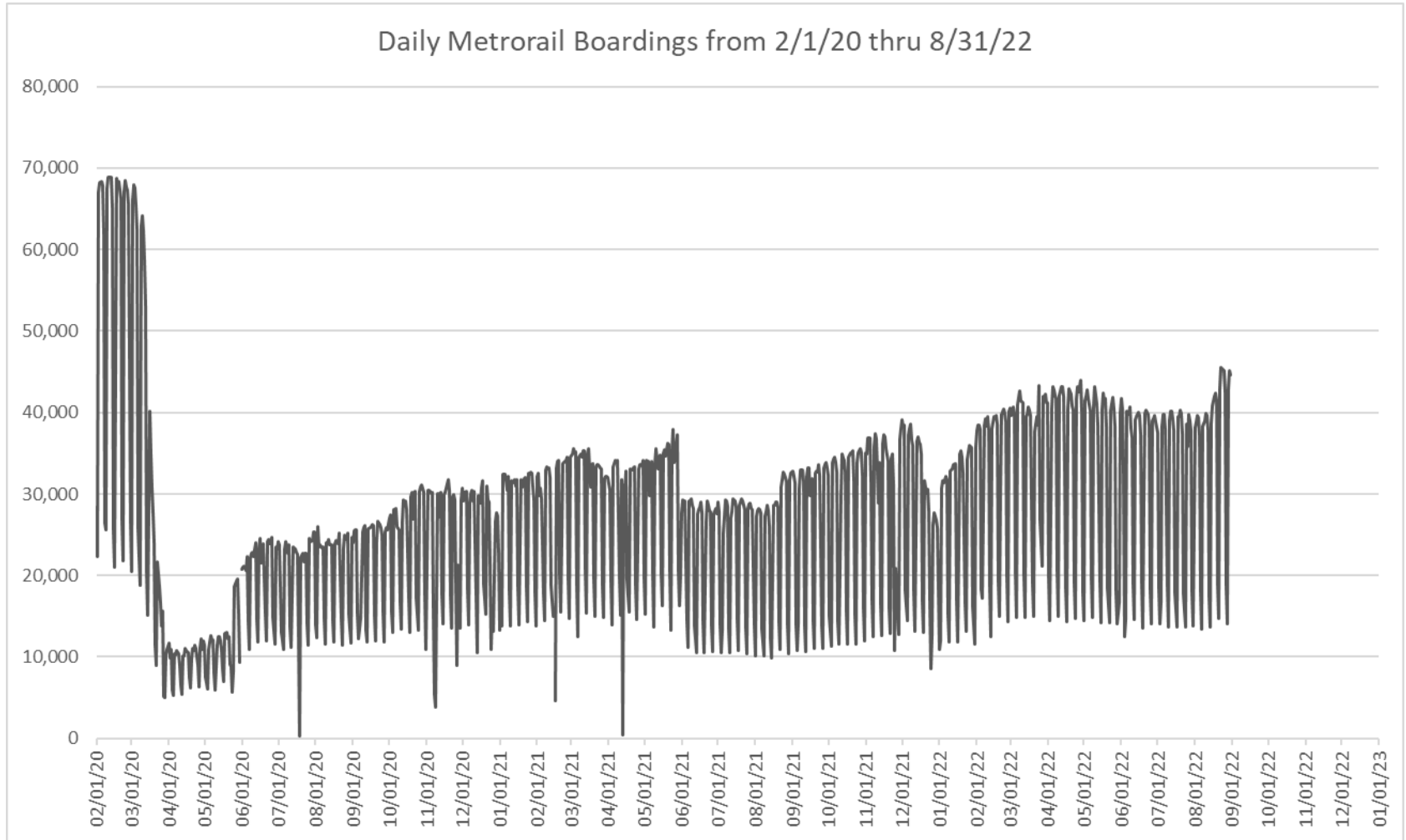


**“TOP 5 / BOTTOM 5” RAIL STATIONS AVERAGE WEEKDAY RIDERSHIP PERFORMANCE  
YEAR OVER YEAR COMPARISONS**

<b>Station</b>	<b>Aug-22</b>	<b>Aug-21</b>	<b>Absolute Delta (1)</b>	<b>Percent Delta</b>
GOVERNMENT CENTER	5,581	3,966	1,615	40.7%
BRICKELL	4,267	3,072	1,196	38.9%
DADELAND NORTH	3,368	2,304	1,064	46.2%
DADELAND SOUTH	3,778	2,822	956	33.9%
CIVICCENTER	3,570	2,673	897	33.5%
BROWNSVILLE	643	527	116	22.0%
Dr. MARTIN LUTHER KING, JR.	756	607	149	24.5%
SANTA CLARA	560	386	174	45.1%
CULMER	857	674	184	27.3%
OKEECHOBEE	787	557	231	41.5%

- (1) Averages rounded to the nearest boarding.
- (2) As a result of the SARS-CoV-2 pandemic, rides were fare-free beginning March 22, 2020; many rail stations continued reporting YOY gains in August 2022, since August 2021 still showed clear reduction effects on ridership from the SARS-CoV-2 pandemic. Fares were reinstated June 1, 2021, and ridership data from the faregate system rather than the video camera counter system is utilized from that date going forward.

## DAILY METRORAIL RIDERSHIP SINCE FEBRUARY 1, 2020



- (1) National Emergency was declared on 3/13/20 as a result of the SARS-CoV-2 pandemic.
- (2) There was no Metrobus, Metrorail and Metromover service on 5/31/20, as a safety precaution.
- (3) The dip at the start of the second week of November 2020 is due to Hurricane Eta; these are *raw data* from the Unleash Live contractor AI video system.
- (4) The dip on 4/13/21 is due to a loss of connectivity at all stations, affecting a few stations over the next two days as well.
- (5) The reduction seen beginning 6/1/21 is partly due to the resumption of fares and partly the result of resuming reporting Cubi faregate data rather than video camera counts.
- (6) Periodic (weekly) variations are prominent, since weekday ridership is almost always significantly higher than weekend or holiday ridership.

## METRORAIL PARKING PATRONAGE SUMMARY August 2022

PARK-RIDE LOT	ACTUAL CAPACITY (1)	ACTUAL OCCUPANCY (2)	PERCENT OCCUPANCY
DADELAND SOUTH	1,260	533	42%
DADELAND NORTH	1,963	916	47%
SOUTH MIAMI	837	297	35%
UNIVERSITY	230	102	44%
DOUGLAS ROAD	190	145	76%
COCONUT GROVE	100	28	28%
VIZCAYA	120	36	30%
CULMER	40	11	29%
SANTA CLARA	61	30	49%
ALLAPATTAH	74	9	13%
EARLINGTON HEIGHTS	361	119	33%
BROWNSVILLE	100	62	62%
(*) DR. MARTIN LUTHER KING JR. (MDT)	62	0	0%
(*) DR. MARTIN LUTHER KING JR. (GARAGE)	631	0	0%
NORTHSIDE	100	68	68%
HIALEAH	338	39	12%
OKEECHOBEE	1,256	134	11%
PALMETTO	700	143	20%
<b>TOTAL</b>	<b>8,423</b>	<b>2,671</b>	<b>32%</b>

- (1) Number of spaces could vary each week; shown are available spaces during final week of month, as submitted by DTPW Safety & Security office.  
(2) All sampled occupancy data provided by DTPW Safety & Security office; calculations are revisions to those submitted by that entity.  
(3) Daily averages rounded to nearest unit, with fewer counts at some stations due to shortage of DTPW Safety & Security office staff; calculations are based on sampled counted days only per raw data submitted, with resulting average daily occupancy shown.  
(\*) Closed throughout the month, per the DTPW Safety & Security office.

# Metromover



August 2022

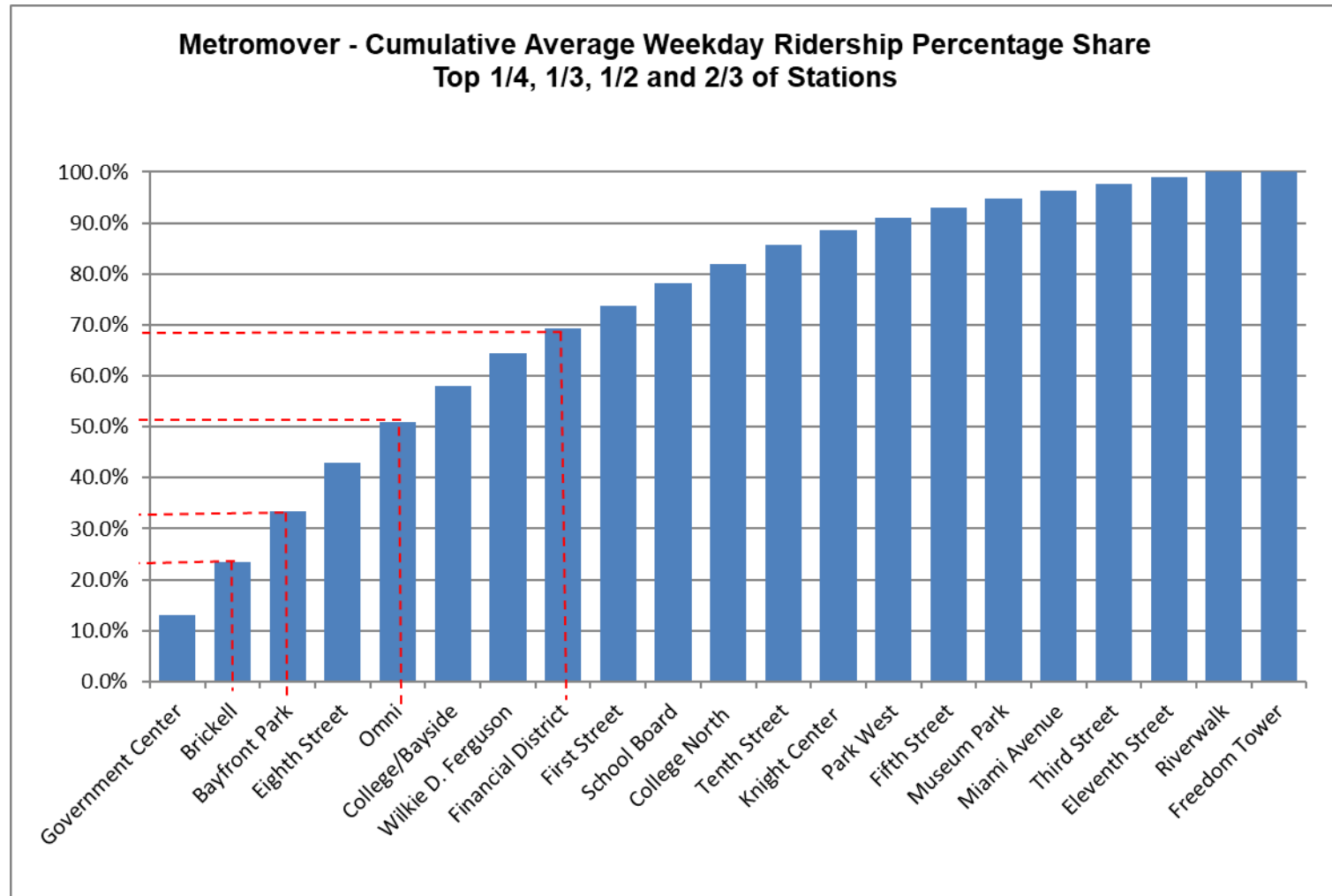
## METROMOVER MONTHLY AND AVERAGE DAILY BOARDINGS BY STATION

	Average Weekday	Average Weekday	Percent Change	Average Saturday	Average Saturday	Percent Change	Average Sunday	Average Sunday	Percent Change	Total Monthly	Total Monthly	Percent Change
STATIONS	Aug-22	Aug-21	22 vs 21	Aug-22	Aug-21	22 vs 21	Aug-22	Aug-21	22 vs 21	Aug-22	Aug-21	22 vs 21
School Board	814	499	63.3%	543	371	46.3%	549	336	63.3%	23,099	14,137	63.4%
Omni	1,506	970	55.2%	1,103	763	44.6%	952	642	48.3%	42,847	27,607	55.2%
Museum Park	311	201	54.8%	434	286	52.0%	358	222	61.7%	7,348	6,665	10.2%
Eleventh Street	230	199	15.9%	239	140	70.6%	154	122	25.8%	6,866	5,540	23.9%
Park West	479	272	76.1%	403	176	129.4%	308	159	94.0%	13,384	7,480	78.9%
Freedom Tower (1)												
Government Center	2,417	1,685	43.4%	1,739	1,082	60.7%	1,388	953	45.6%	57,730	46,171	25.0%
Miami Avenue	287	251	14.5%	234	187	25.0%	241	151	59.4%	7,742	6,271	23.5%
Third Street	279	219	27.4%	225	155	45.0%	203	133	52.8%	8,135	6,107	33.2%
Knight Center	535	354	51.4%	367	202	81.9%	319	182	75.5%	15,048	9,491	58.6%
Bayfront Park	1,841	1,289	42.9%	1,392	979	42.2%	1,165	956	21.9%	52,582	37,045	41.9%
First Street	842	736	14.4%	725	696	4.2%	654	595	9.8%	20,985	17,170	22.2%
College/Bayside	1,326	778	70.5%	1,207	692	74.5%	974	560	73.9%	26,783	13,692	95.6%
College North	706	386	83.2%	484	255	89.9%	363	197	84.3%	18,926	9,651	96.1%
Wilkie D. Ferguson	1,185	531	123.1%	1,286	382	236.4%	788	307	156.9%	35,548	14,744	141.1%
Riverwalk	187	234	-20.4%	182	170	7.2%	179	131	36.3%	5,731	6,485	-11.6%
Fifth Street	376	275	36.9%	288	226	27.5%	198	184	7.5%	10,593	7,868	34.6%
Eighth Street	1,764	1,100	60.3%	1,564	1,007	55.3%	1,330	861	54.4%	52,150	32,544	60.2%
Tenth Street	706	506	39.3%	582	389	49.6%	575	353	62.8%	20,857	14,462	44.2%
Brickell	1,983	1,548	28.1%	1,585	1,227	29.2%	1,362	1,101	23.7%	57,390	44,471	29.1%
Financial District	906	620	46.1%	535	370	44.8%	409	320	28.0%	24,615	16,718	47.2%
<b>TOTAL</b>	<b>18,681</b>	<b>12,652</b>	<b>47.6%</b>	<b>15,116</b>	<b>9,752</b>	<b>55.0%</b>	<b>12,469</b>	<b>8,465</b>	<b>47.3%</b>	<b>508,359</b>	<b>344,319</b>	<b>47.6%</b>

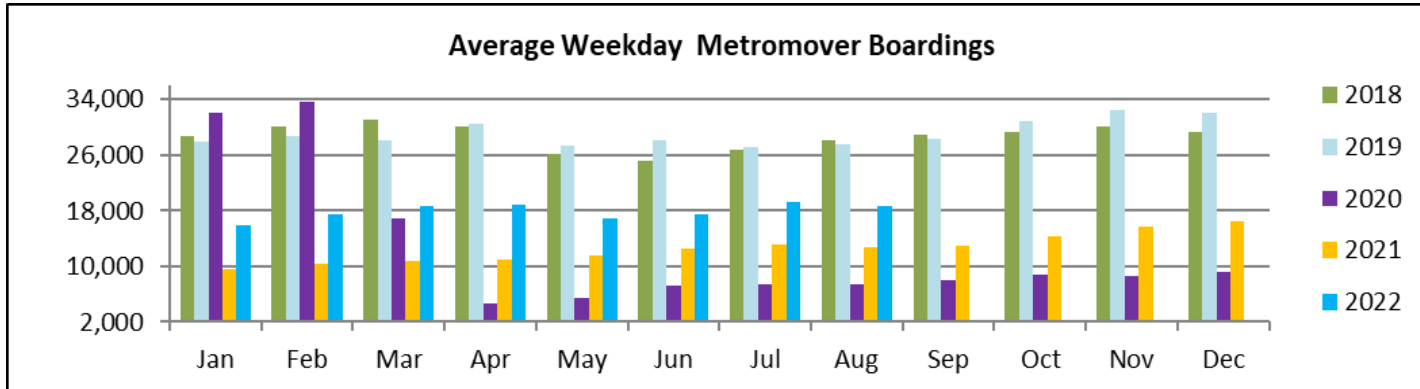
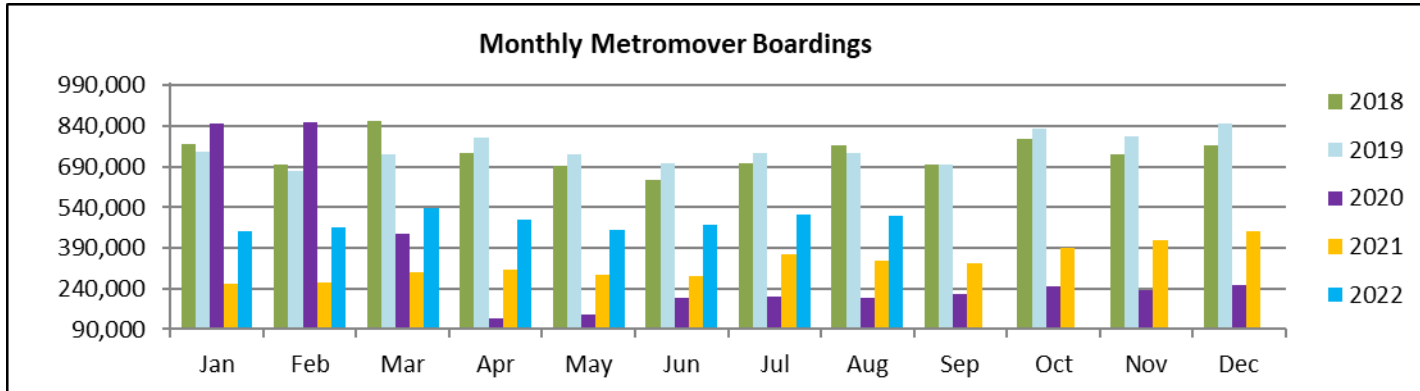
(1) Freedom Tower Station was closed for construction.

(\*) APC system did not report boardings data at several stations on several days in August 2022; the average daily ridership calculations take this into account.

## METROMOVER CUMULATIVE PERCENTAGE RIDERSHIP SHARE



# TOTAL MONTHLY AND AVERAGE WEEKDAY RIDERSHIP YEAR OVER YEAR COMPARISON CHARTS – METROMOVER



**“TOP 5 / BOTTOM 5” MOVER STATIONS AVERAGE WEEKDAY RIDERSHIP PERFORMANCE  
YEAR OVER YEAR COMPARISONS**

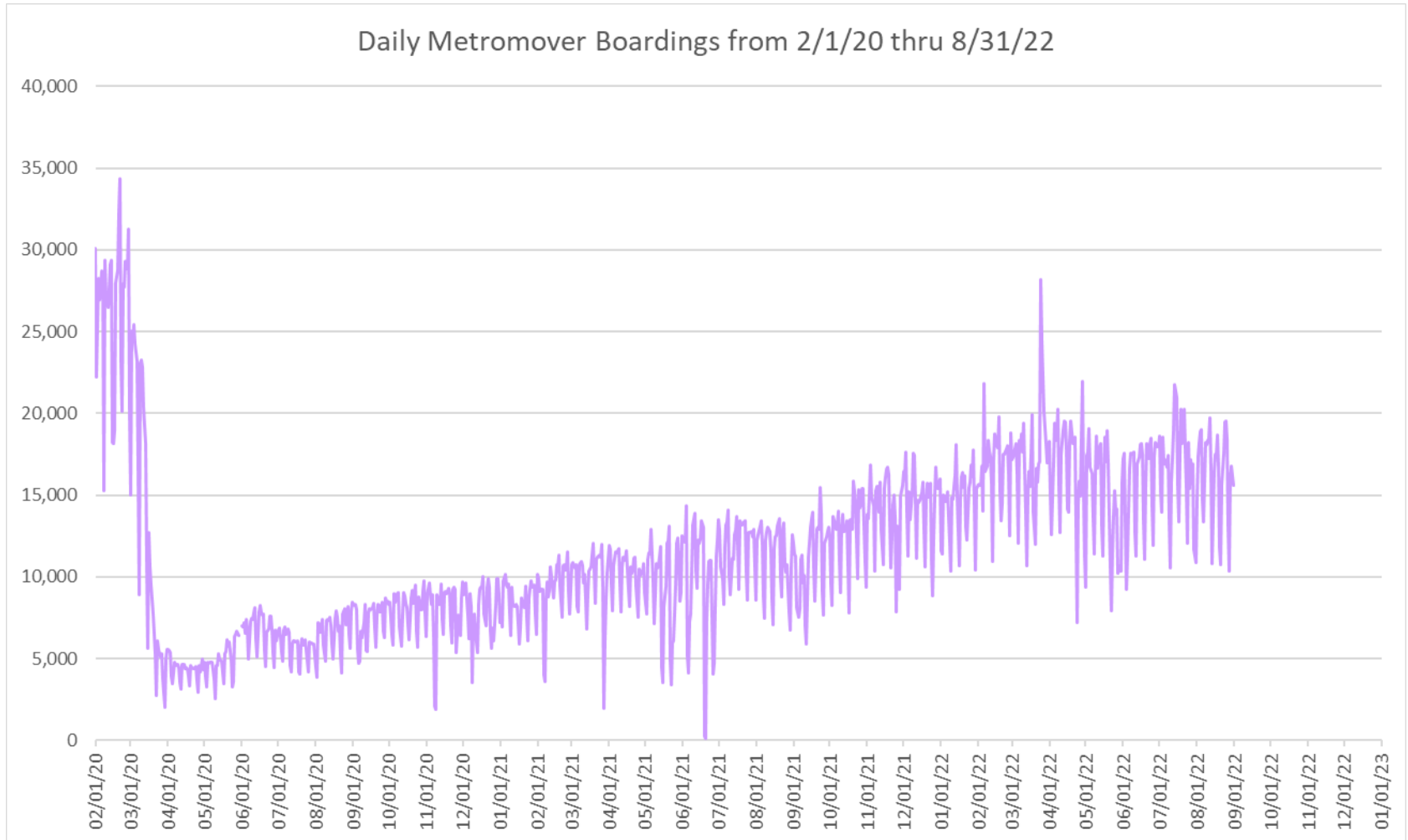
<b>Station</b>	<b>Aug-22</b>	<b>Aug-21</b>	<b>Absolute Delta (1)</b>	<b>Percent Delta</b>
Government Center	2,417	1,685	732	43.4%
Eighth Street	1,764	1,100	664	60.3%
Wilkie D. Ferguson	1,185	531	654	123.1%
Bayfront Park	1,841	1,289	553	42.9%
College/Bayside	1,326	778	548	70.5%
Riverwalk	187	234	-48	-20.4%
Eleventh Street	230	199	32	15.9%
Miami Avenue	287	251	36	14.5%
Third Street	279	219	60	27.4%
Fifth Street	376	275	101	36.9%

(1) Averages rounded to the nearest boarding.

(†) All Metromover stations reporting YOY gains in August 2022, as August 2021 showed clear ongoing reduction effects on ridership from the SARS-CoV-2 pandemic.



## DAILY METROMOVER RIDERSHIP SINCE FEBRUARY 1, 2020



- (1) National Emergency was declared on 3/13/20 as a result of the SARS-CoV-2 pandemic.
- (2) There was no Metrobus, Metrorail and Metromover service on 5/31/20, as a safety precaution.
- (3) The dip at the start of the second week of November 2020 is due to Hurricane Eta; these are *raw data* from the UTA contractor APC system. Other more recent dips are due to various station closures (mostly on weekends) for system maintenance purposes.
- (4) Periodic (weekly) variations are prominent, since weekday ridership is almost always significantly higher than weekend or holiday ridership.

## Special Transportation Services

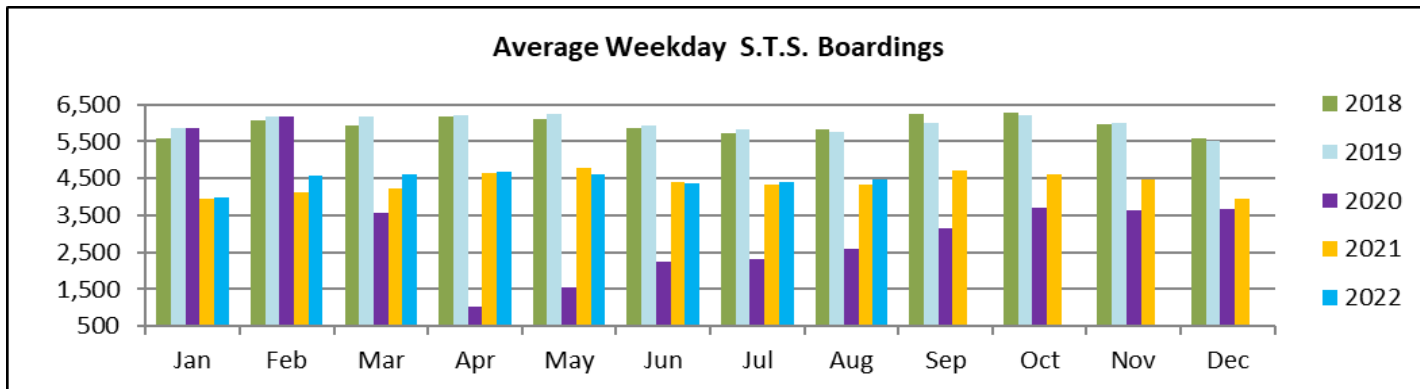
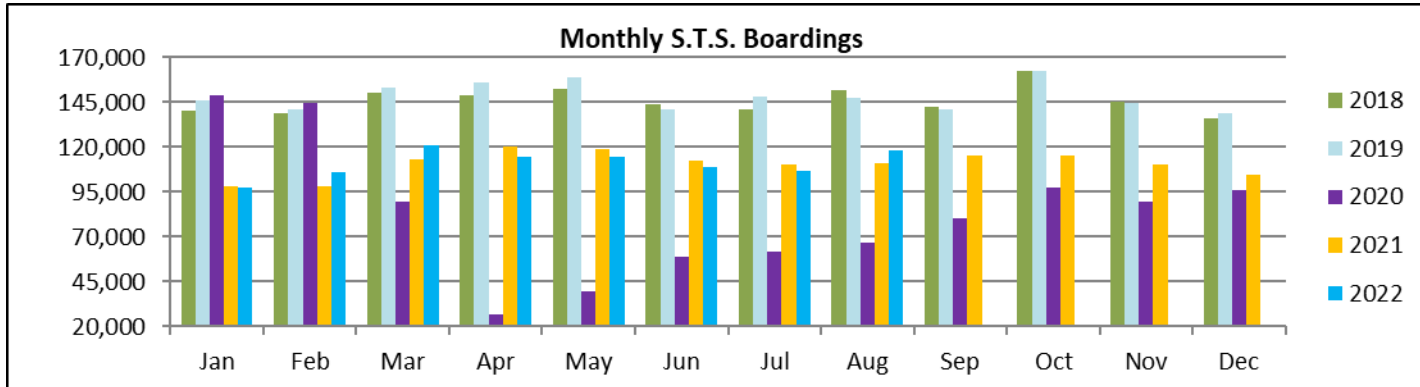


**STS MONTHLY AND AVERAGE DAILY BOARDINGS**  
**August 2022**

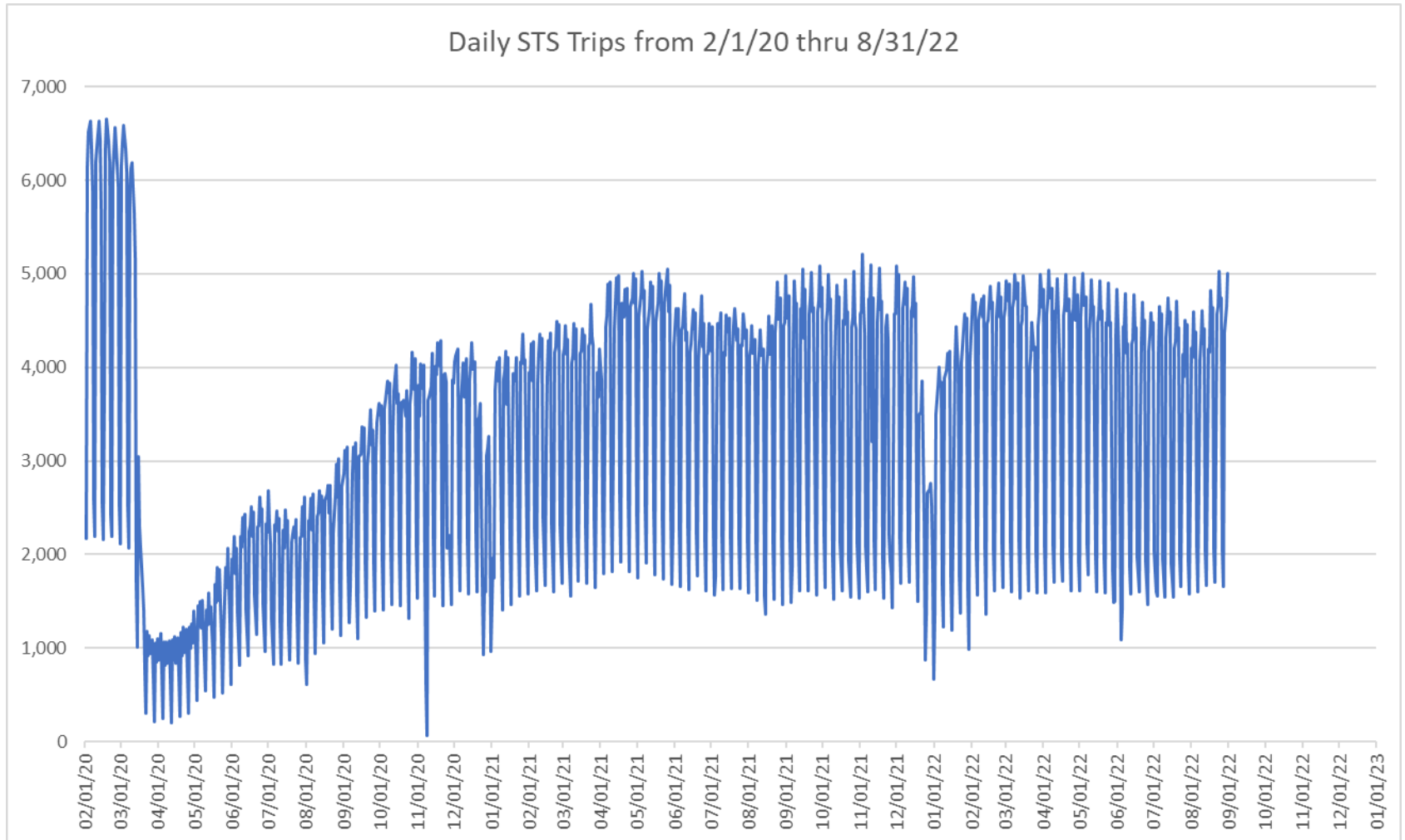
Measure	timeline	Ambulatory	Wheelchair	Total Clients (*)
<b>Average Weekday</b>	Aug-22	3,704	780	<b>4,484</b>
<b>Average Saturday</b>	Aug-22	1,690	359	<b>2,049</b>
<b>Average Sunday</b>	Aug-22	1,360	295	<b>1,655</b>
<b>Total Monthly</b>	<b>Aug-22</b>	<b>97,394</b>	<b>20,547</b>	<b>117,941</b>
<b>Average Weekday</b>	Aug-21	3,521	815	<b>4,336</b>
<b>Average Saturday</b>	Aug-21	1,595	389	<b>1,984</b>
<b>Average Sunday</b>	Aug-21	1,253	235	<b>1,488</b>
<b>Total Monthly</b>	<b>Aug-21</b>	<b>90,109</b>	<b>20,657</b>	<b>110,766</b>
<b>Average Weekday</b>	Aug-20	2,102	479	<b>2,580</b>
<b>Average Saturday</b>	Aug-20	1,235	255	<b>1,490</b>
<b>Average Sunday</b>	Aug-20	842	143	<b>985</b>
<b>Total Monthly</b>	<b>Aug-20</b>	<b>54,525</b>	<b>12,038</b>	<b>66,563</b>
<b>% Change Current vs. Aug 2021 Weekday</b>		5.2%	-4.3%	3.4%
<b>% Change Current vs. Aug 2021 Saturday</b>		5.9%	-7.5%	3.3%
<b>% Change Current vs. Aug 2021 Sunday</b>		8.5%	25.6%	11.2%
<b>% Change Current vs. Aug 2021 Month Total</b>		<b>8.1%</b>	<b>-0.5%</b>	<b>6.5%</b>
<b>% Change Current vs. Aug 2020 Weekday</b>		76.2%	62.9%	73.8%
<b>% Change Current vs. Aug 2020 Saturday</b>		36.8%	41.0%	37.5%
<b>% Change Current vs. Aug 2020 Sunday</b>		61.4%	106.1%	67.9%
<b>% Change Current vs. Aug 2020 Month Total</b>		<b>78.6%</b>	<b>70.7%</b>	<b>77.2%</b>

(\*) Trip count data provided by STS contractor.

## TOTAL MONTHLY AND AVERAGE WEEKDAY RIDERSHIP YEAR OVER YEAR COMPARISON CHARTS – SPECIAL TRANSPORTATION SERVICES (S.T.S.)

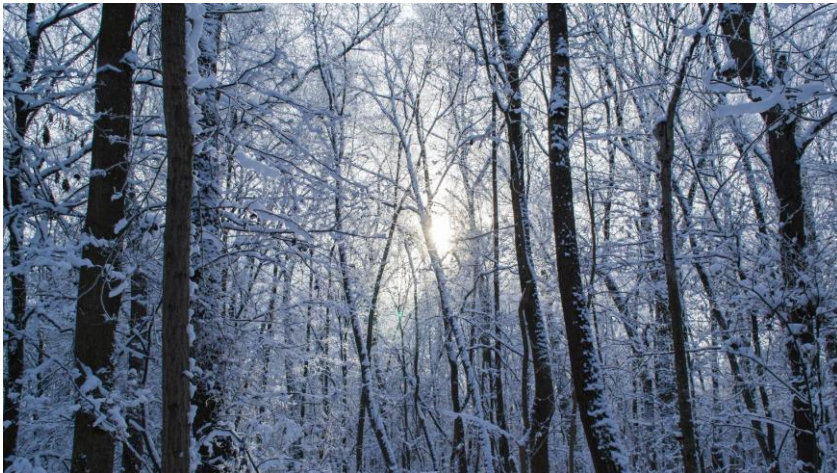


## DAILY STS RIDERSHIP SINCE FEBRUARY 1, 2020

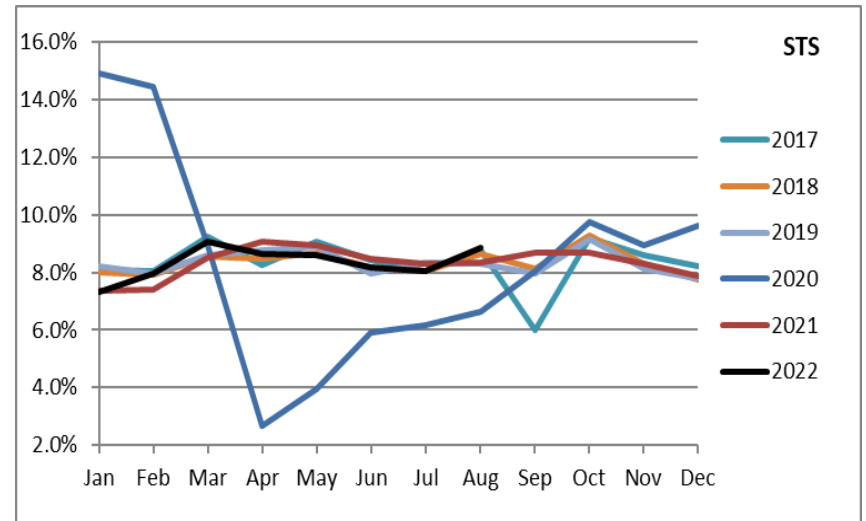
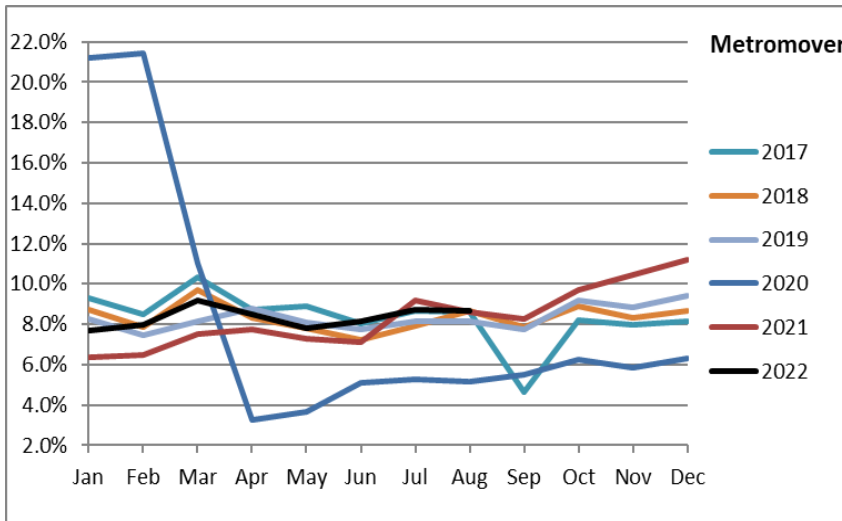
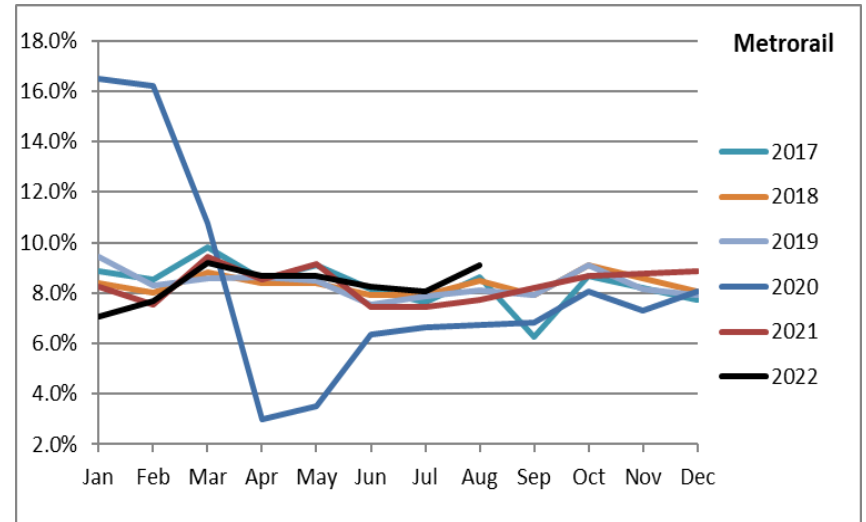
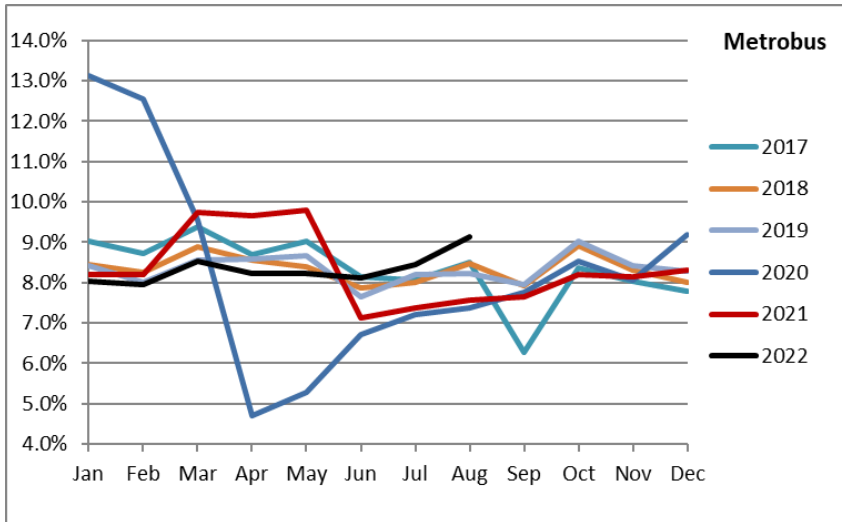


- (1) National Emergency was declared on 3/13/20 as a result of the SARS-CoV-2 pandemic.
- (2) The dip at the start of the second week of November 2020 is due to Hurricane Eta.
- (3) Periodic (weekly) variations are prominent, since weekday ridership is almost always significantly higher than weekend or holiday ridership.

# Ridership Seasonality



# RIDERSHIP SEASONALITY – PERCENT RIDERSHIP SHARE BY MONTH AND CALENDAR YEAR FOR EACH MODE



Note: the prominent dips seen in the fall of 2017 and beginning in the spring of 2020 are due to Hurricane Irma and the SARS-CoV-2 pandemic, respectively. Reductions in Bus and Rail ridership share seen beginning in June 2021 are due to reinstatement of fares as well changes in reporting tools and datasets, as discussed earlier in this report.