



# TRANSPORTATION AND PUBLIC WORKS

## RIDERSHIP TECHNICAL REPORT (revised) *Division of Performance and Materials Management*



# Table of Contents

<i>Table of Contents</i>	2-3
<b>All Modes Overview</b>	<b>4</b>
Total Monthly Weekday, Saturday and Sunday Monthly Boardings By Mode	5
Average Weekday, Saturday and Sunday Boardings by Mode	6
Metrobus Total Monthly Ridership Comparisons by Fiscal Year	7
Metrorail Total Monthly Ridership Comparisons by Fiscal Year	8
Metromover Total Monthly Ridership Comparisons by Fiscal Year	9
STS Total Monthly Ridership Comparisons by Fiscal Year	10
All-Modes Combined Total Monthly Ridership Comparisons By Fiscal Year	11
All Modes Combined Total Monthly and Average Weekday Ridership – Year over Year Comparison Charts	12
Average Weekday Ridership – Modal Splits	13
<b>Metrobus (revised automatic passenger counter-based sampling data estimates for directly-operated bus routes)</b>	<b>14</b>
Metrobus Average Weekday Boardings by Route	15-17
Metrobus Average Saturday Boardings by Route	18-19
Metrobus Average Sunday Boardings by Route	20-21
Metrobus Monthly Total Boardings by Route	22-24
Year-over-Year Bus Ridership by Route Service Type	25-26
Bus Routes as Ranked by Percentage of Average Weekday Ridership	27
Metrobus Cumulative Percentage Average Weekday Ridership Share by Route (Top 75%)	28
Total Monthly and Average Weekday Bus Ridership – Year over Year Comparison Charts	29
Bus “Top 5 / Bottom 5” Routes Average Weekday Ridership Performance	30
Metrobus Parking Patronage Summary	31

## Table of Contents (continued)

<b>Metrorail</b>	<b>32</b>
Metrorail Average Weekday Boardings by Station	33
Metrorail Average Saturday Boardings by Station	34
Metrorail Average Sunday Boardings by Station	35
Metrorail Total Monthly Boardings by Station	36
Metrorail Cumulative Percentage Average Weekday Ridership Share	37
Total Monthly and Average Weekday Rail Ridership – Year over Year Comparison Charts	38
“Top 5 / Bottom 5” Stations Average Weekday Ridership Performance	39
Metrorail Parking Patronage Summary	40
<b>Metromover</b>	<b>41</b>
Monthly and Average Daily Mover Boardings by Station	42
Metromover Cumulative Percentage Average Weekday Ridership Share	43
Total Monthly and Average Weekday Mover Ridership – Year over Year Comparison Charts	44
“Top 5 / Bottom 5” Stations Average Weekday Ridership Performance	45
<b>Special Transportation Services (STS)</b>	<b>46</b>
STS Monthly and Average Daily Boardings	47
Total Monthly and Average Weekday STS Ridership – Year over Year Comparison Charts	48
<b>Ridership Seasonality</b>	<b>49</b>
Ridership Seasonality – Percent Ridership Share by Month and Calendar year for Each Mode	50

# All Modes Overview



**TOTAL MONTHLY WEEKDAY, SATURDAY AND SUNDAY BOARDINGS BY MODE  
December 2022**

<b>TRAVEL MODE</b>	<b>MONTH'S TOTAL WEEKDAYS RIDERSHIP</b>	<b>MONTH'S TOTAL SATURDAYS RIDERSHIP</b>	<b>MONTH'S TOTAL SUNDAYS RIDERSHIP</b>	<b>TOTAL MONTHLY RIDERSHIP</b>	<b>% CHANGE vs Dec 2021 TOTAL MONTH RIDERSHIP</b>
<b>METROBUS (1), (2)</b>	3,851,994	535,529	289,937	4,677,460	49.7%
<b>METRORAIL (3)</b>	911,666	96,969	54,461	1,063,096	23.6%
<b>METROMOVER (4)</b>	325,498	63,599	36,976	426,073	-5.4%
<b>STS PARATRANSIT (5)</b>	95,347	10,319	6,353	112,019	7.2%
<b>TOTAL</b>	<b>5,184,505</b>	<b>706,416</b>	<b>387,727</b>	<b>6,278,648</b>	<b>38.3%</b>

- (1) Metrobus fares resumed on June 1, 2021, following a 14-month period of fare-free rides as a result of the SARS-CoV-2 pandemic. The NextFare System farebox data replaced the bus automatic passenger counter data as ridership data of record starting on that date.
- (2) Bus ridership reporting through automatic passenger counters coupled with a new enhanced sensor system resumed on October 1, 2022.
- (3) Metrorail fares resumed on June 1, 2021, following a 14-month period of fare-free rides as a result of the SARS-CoV-2 pandemic. The NextFare System faregate data replaced the video data as ridership data of record starting on that date.
- (4) Beginning March 13, 2020 (day of National Emergency Declaration due to SARS-CoV-2 pandemic), only raw data from Metromover automatic passenger counters is reported; no estimates are performed after March 13, 2020.
- (5) Paratransit ridership data as reported by the contractor.

**AVERAGE WEEKDAY, SATURDAY AND SUNDAY BOARDINGS BY MODE**  
**December 2022**

<b>Travel Mode</b>	<b>Average Weekday</b>	<b>Average Saturday</b>	<b>Average Sunday</b>	<b>% Change Dec 2021 Weekday</b>	<b>% Change Dec 2021 Saturday</b>	<b>% Change Dec 2021 Sunday</b>
<b>METROBUS</b>	175,158	107,106	72,484	53.0%	61.4%	27.6%
<b>METRORAIL</b>	42,582	19,394	13,615	25.9%	25.6%	2.4%
<b>METROMOVER</b>	14,889	12,720	9,244	-10.2%	-4.7%	-23.6%
<b>STS PARATRANSIT</b>	4,334	2,064	1,588	9.6%	13.1%	1.8%
<b>Totals (1)</b>	<b>236,963</b>	<b>141,283</b>	<b>96,932</b>	<b>40.3%</b>	<b>45.7%</b>	<b>15.7%</b>

(\*) Average Sunday ridership includes Christmas Day (December 25, 2022) for Metrobus and STS but excludes it for Metrorail and Metromover.

(\*\*) Average ridership is calculated and published only for those days and stations with nontrivial amounts of reported data.

## METROBUS TOTAL MONTHLY RIDERSHIP COMPARISONS BY FISCAL YEAR

<b>Bus Month</b>	<b>FY 19</b>	<b>FY 20</b>	<b>Variance 19 to 20</b>	<b>FY 21</b>	<b>FY 22</b>	<b>FY 23</b>	<b>Variance 22 to 23</b>	<b>Variance 21 to 22</b>	<b>Variance 19 to 23</b>	<b>Variance 19 to 22</b>
<b>Oct</b>	4,554,886	4,507,012	-1.1%	2,805,139	3,081,157	4,679,725	51.9%	9.8%	2.7%	-32.4%
<b>Nov</b>	4,245,535	4,197,225	-1.1%	2,651,290	3,056,726	4,549,666	48.8%	15.3%	7.2%	-28.0%
<b>Dec</b>	4,081,581	4,126,990	1.1%	3,022,530	3,123,883	4,677,460	49.7%	3.4%	14.6%	-23.5%
<b>Jan</b>	4,195,911	4,316,998	2.9%	3,082,746	3,029,055			-1.7%		-27.8%
<b>Feb</b>	3,994,019	4,123,083	3.2%	3,076,966	2,995,789			-2.6%		-25.0%
<b>Mar</b>	4,266,768	3,136,162	-26.5%	3,660,639	3,218,562			-12.1%		-24.6%
<b>Apr</b>	4,291,135	1,544,316	-64.0%	3,625,048	3,105,797			-14.3%		-27.6%
<b>May</b>	4,330,922	1,734,609	-59.9%	3,683,343	3,097,574			-15.9%		-28.5%
<b>Jun</b>	3,823,863	2,210,725	-42.2%	2,672,570	3,064,059			14.6%		-19.9%
<b>Jul</b>	4,094,906	2,366,749	-42.2%	2,769,907	3,189,994			15.2%		-22.1%
<b>Aug</b>	4,109,613	2,422,014	-41.1%	2,843,552	3,442,006			21.0%		-16.2%
<b>Sep</b>	3,971,220	2,546,923	-35.9%	2,877,110	3,123,572			8.6%		-21.3%
<b>FY Total</b>	<b>49,960,359</b>	<b>37,232,806</b>	<b>-25.5%</b>	<b>36,770,840</b>	<b>37,528,174</b>			<b>2.1%</b>		<b>-24.9%</b>

## METRORAIL TOTAL MONTHLY RIDERSHIP COMPARISONS BY FISCAL YEAR

<b>Rail Month</b>	<b>FY 19</b>	<b>FY 20</b>	<b>Variance 19 to 20</b>	<b>FY 21</b>	<b>FY 22</b>	<b>FY 23</b>	<b>Variance 22 to 23</b>	<b>Variance 21 to 22</b>	<b>Variance 19 to 23</b>	<b>Variance 19 to 22</b>
<b>Oct</b>	1,757,225	1,643,166	-6.5%	769,525	844,383	1,053,191	24.7%	9.7%	-40.1%	-51.9%
<b>Nov</b>	1,656,929	1,469,448	-11.3%	699,492	850,881	1,055,066	24.0%	21.6%	-36.3%	-48.6%
<b>Dec</b>	1,553,804	1,433,928	-7.7%	769,194	860,436	1,063,096	23.6%	11.9%	-31.6%	-44.6%
<b>Jan</b>	1,708,695	1,576,340	-7.7%	799,119	832,924			4.2%		-51.3%
<b>Feb</b>	1,501,458	1,549,118	3.2%	730,792	905,162			23.9%		-39.7%
<b>Mar</b>	1,554,851	1,027,319	-33.9%	917,097	1,084,978			18.3%		-30.2%
<b>Apr</b>	1,559,446	287,803	-81.5%	827,414	1,027,139			24.1%		-34.1%
<b>May</b>	1,531,597	337,696	-78.0%	887,111	1,023,322			15.4%		-33.2%
<b>Jun</b>	1,359,966	608,758	-55.2%	723,469	975,477			34.8%		-28.3%
<b>Jul</b>	1,419,158	632,964	-55.4%	722,159	953,331			32.0%		-32.8%
<b>Aug</b>	1,463,646	641,275	-56.2%	749,578	1,076,490			43.6%		-26.5%
<b>Sep</b>	1,427,726	654,244	-54.2%	795,749	1,012,331			27.2%		-29.1%
<b>FY Total</b>	<b>18,494,501</b>	<b>11,862,059</b>	<b>-35.9%</b>	<b>9,390,699</b>	<b>11,446,854</b>			<b>21.9%</b>		<b>-38.1%</b>



## METROMOVER TOTAL MONTHLY RIDERSHIP COMPARISONS BY FISCAL YEAR

<b>Mover Month</b>	<b>FY 19</b>	<b>FY 20</b>	<b>Variance 19 to 20</b>	<b>FY 21</b>	<b>FY 22</b>	<b>FY 23</b>	<b>Variance 22 to 23</b>	<b>Variance 21 to 22</b>	<b>Variance 19 to 23</b>	<b>Variance 19 to 22</b>
<b>Oct</b>	790,533	831,234	5.1%	250,044	389,065	514,308	32.2%	55.6%	-34.9%	-50.8%
<b>Nov</b>	735,198	799,632	8.8%	232,422	418,929	439,150	4.8%	80.2%	-40.3%	-43.0%
<b>Dec</b>	767,239	849,832	10.8%	251,019	450,320	426,073	-5.4%	79.4%	-44.5%	-41.3%
<b>Jan</b>	746,728	847,773	13.5%	255,968	451,566			76.4%		-39.5%
<b>Feb</b>	675,160	855,398	26.7%	260,332	465,968			79.0%		-31.0%
<b>Mar</b>	737,814	441,200	-40.2%	302,502	535,857			77.1%		-27.4%
<b>Apr</b>	795,696	130,549	-83.6%	310,772	495,982			59.6%		-37.7%
<b>May</b>	734,645	146,454	-80.1%	292,922	455,120			55.4%		-38.0%
<b>Jun</b>	701,318	203,637	-71.0%	286,145	477,286			66.8%		-31.9%
<b>Jul</b>	739,814	210,596	-71.5%	368,847	512,094			38.8%		-30.8%
<b>Aug</b>	739,785	205,995	-72.2%	344,319	508,359			47.6%		-31.3%
<b>Sep</b>	699,879	219,696	-68.6%	331,915	305,185			-8.1%		-56.4%
<b>FY Total</b>	<b>8,863,809</b>	<b>5,741,996</b>	<b>-35.2%</b>	<b>3,487,207</b>	<b>5,465,731</b>			<b>56.7%</b>		<b>-38.3%</b>

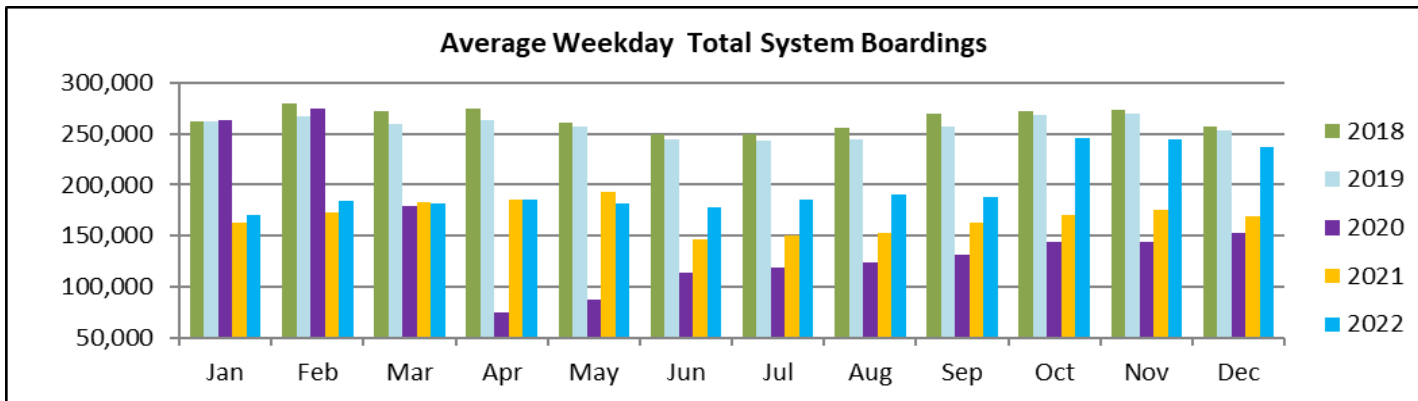
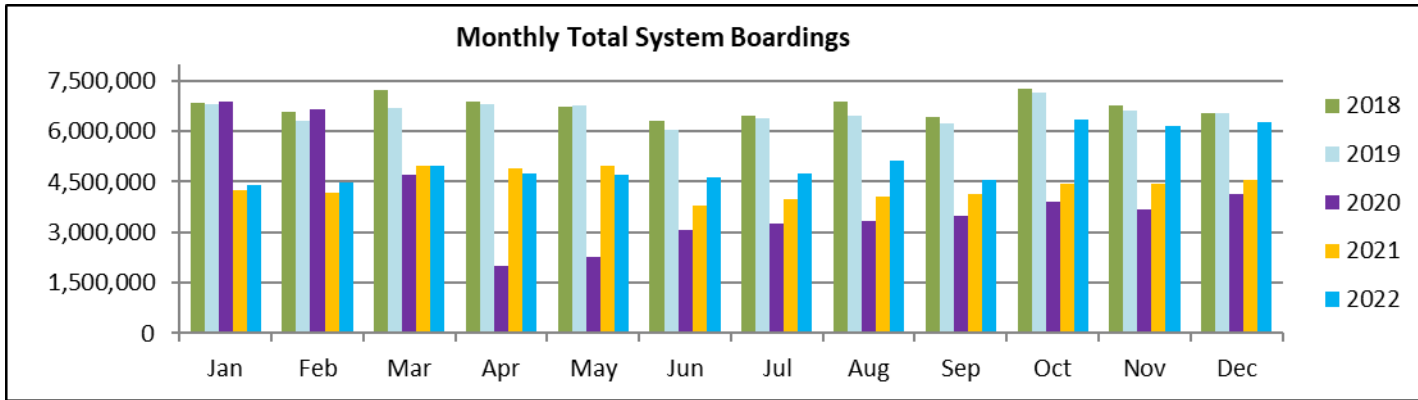
## SPECIAL TRANSPORTATION SERVICES (STS) TOTAL MONTHLY RIDERSHIP COMPARISONS BY FISCAL YEAR

<b>STS Month</b>	<b>FY 19</b>	<b>FY 20</b>	<b>Variance 19 to 20</b>	<b>FY 21</b>	<b>FY 22</b>	<b>FY 23</b>	<b>Variance 22 to 23</b>	<b>Variance 21 to 22</b>	<b>Variance 19 to 23</b>	<b>Variance 19 to 22</b>
<b>Oct</b>	162,564	162,704	0.1%	97,388	115,122	122,189	6.1%	18.2%	-24.8%	-29.2%
<b>Nov</b>	145,653	144,366	-0.9%	89,387	110,289	111,578	1.2%	23.4%	-23.4%	-24.3%
<b>Dec</b>	136,110	138,642	1.9%	96,366	104,496	112,019	7.2%	8.4%	-17.7%	-23.2%
<b>Jan</b>	146,268	149,114	1.9%	97,928	97,541			-0.4%		-33.3%
<b>Feb</b>	141,396	144,392	2.1%	98,285	105,706			7.6%		-25.2%
<b>Mar</b>	153,191	89,634	-41.5%	112,930	120,718			6.9%		-21.2%
<b>Apr</b>	155,808	26,877	-82.7%	120,122	114,912			-4.3%		-26.2%
<b>May</b>	158,665	39,654	-75.0%	118,636	114,505			-3.5%		-27.8%
<b>Jun</b>	141,320	59,093	-58.2%	112,397	109,054			-3.0%		-22.8%
<b>Jul</b>	148,232	61,765	-58.3%	110,059	107,188			-2.6%		-27.7%
<b>Aug</b>	147,331	66,563	-54.8%	110,766	117,941			6.5%		-19.9%
<b>Sep</b>	141,387	80,346	-43.2%	115,406	108,788			-5.7%		-23.1%
<b>FY Total</b>	<b>1,777,925</b>	<b>1,163,150</b>	<b>-34.6%</b>	<b>1,279,670</b>	<b>1,326,260</b>			<b>3.6%</b>		<b>-25.4%</b>

## ALL-MODES COMBINED TOTAL MONTHLY RIDERSHIP COMPARISONS BY FISCAL YEAR

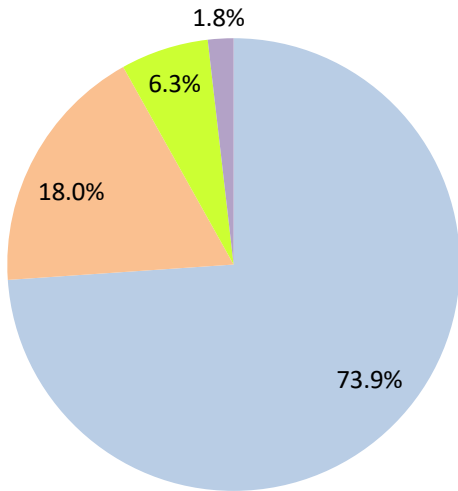
All Modes											
Month	FY 19	FY 20	FY 21	FY 22	FY 23	19 TO 20	20 TO 21	21 TO 22	22 TO 23	19 TO 23	19 TO 22
<b>Oct</b>	7,265,208	7,144,116	3,922,096	4,429,727	6,369,413	-1.7%	-45.1%	12.9%	43.8%	-12.3%	-39.0%
<b>Nov</b>	6,783,315	6,610,671	3,672,591	4,436,825	6,155,460	-2.5%	-44.4%	20.8%	38.7%	-9.3%	-34.6%
<b>Dec</b>	6,538,734	6,549,392	4,139,109	4,539,135	6,278,648	0.2%	-36.8%	9.7%	38.3%	-4.0%	-30.6%
<b>Jan</b>	6,797,602	6,890,225	4,235,761	4,411,086		1.4%	-38.5%	4.1%			-35.1%
<b>Feb</b>	6,312,033	6,671,991	4,166,375	4,472,625		5.7%	-37.6%	7.4%			-29.1%
<b>Mar</b>	6,712,624	4,694,315	4,993,168	4,960,115		-30.1%	6.4%	-0.7%			-26.1%
<b>Apr</b>	6,802,085	1,989,545	4,883,356	4,743,830		-70.8%	145.5%	-2.9%			-30.3%
<b>May</b>	6,755,829	2,258,413	4,982,012	4,690,521		-66.6%	120.6%	-5.9%			-30.6%
<b>Jun</b>	6,026,467	3,082,213	3,794,581	4,625,876		-48.9%	23.1%	21.9%			-23.2%
<b>Jul</b>	6,402,110	3,272,074	3,970,972	4,762,607		-48.9%	21.4%	19.9%			-25.6%
<b>Aug</b>	6,460,375	3,335,847	4,048,215	5,144,796		-48.4%	21.4%	27.1%			-20.4%
<b>Sep</b>	6,240,212	3,501,209	4,120,180	4,549,876		-43.9%	17.7%	10.4%			-27.1%
<b>FY Total</b>	<b>79,096,594</b>	<b>56,000,011</b>	<b>50,928,416</b>	<b>55,767,019</b>		<b>-29.2%</b>	<b>-9.1%</b>	<b>9.5%</b>			<b>-29.5%</b>

## TOTAL MONTHLY AND AVERAGE WEEKDAY RIDERSHIP YEAR OVER YEAR COMPARISON CHARTS – ALL MODES COMBINED



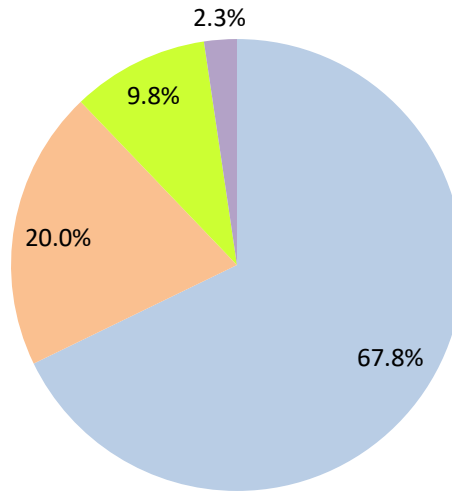
# AVERAGE WEEKDAY RIDERSHIP - MODAL SPLITS

December 2022



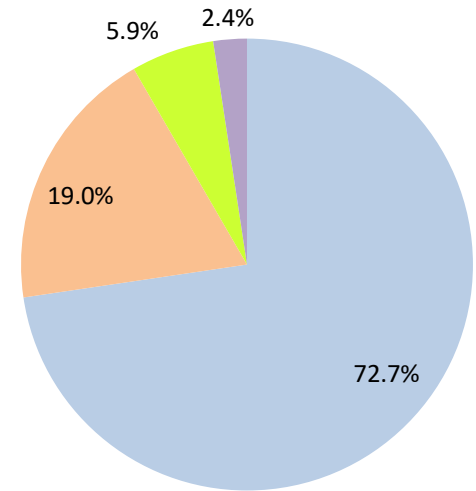
boardings

December 2021



boardings

December 2020



boardings



# Metrobus



## METROBUS AVERAGE WEEKDAY BOARDINGS BY ROUTE (†)

Route <i>weekdays</i>	Average Weekday	Average Weekday	Percent Change	Average Weekday	Percent Change	Average Weekday	Percent Change	Average Weekday	Percent Change
	Dec-22	Dec-21	YOY	Feb-20	Current vs Feb-20	Nov-22	MOM	Dec-20	YO2Y
1 (*)	211	158	33.3%	184	14.6%	222	-4.9%	176	20.1%
2	2,520	1,789	40.8%	3,102	-18.8%	2,707	-6.9%	1,873	34.5%
3	5,629	3,487	61.4%	5,137	9.6%	5,154	9.2%	3,713	51.6%
7	3,780	2,421	56.2%	3,501	8.0%	3,750	0.8%	1,937	95.2%
8	4,486	3,137	43.0%	3,909	14.8%	4,743	-5.4%	3,303	35.8%
9	5,841	4,072	43.4%	5,528	5.7%	5,894	-0.9%	4,723	23.7%
10	2,274	1,545	47.2%	2,482	-8.4%	2,275	0.0%	1,302	74.7%
11	8,338	5,823	43.2%	7,292	14.3%	8,443	-1.2%	5,409	54.2%
12	2,817	1,763	59.8%	2,779	1.4%	2,680	5.1%	2,034	38.5%
16	1,974	1,328	48.6%	1,862	6.0%	1,915	3.1%	1,186	66.5%
17	3,683	2,486	48.2%	3,878	-5.0%	3,536	4.2%	2,383	54.5%
19	1,433	813	76.2%	1,542	-7.1%	1,480	-3.2%	988	45.0%
21	1,712	1,192	43.6%	1,817	-5.8%	1,803	-5.0%	1,526	12.2%
22	4,194	2,377	76.4%	3,640	15.2%	4,116	1.9%	2,355	78.1%
24 - Coral Way Limited	2,220	1,263	75.9%	1,340	65.7%	2,127	4.4%	1,327	67.3%
27	6,704	4,581	46.4%	6,972	-3.8%	6,753	-0.7%	4,924	36.1%
29 (*)	460	337	36.5%	534	-13.9%	465	-1.2%	345	33.5%
31 - BUSWAY LOCAL	1,080	625	72.9%	1,089	-0.9%	1,057	2.2%	541	99.8%
32	2,559	1,545	65.6%	2,390	7.1%	2,534	1.0%	1,744	46.7%
33	1,773	1,070	65.6%	1,687	5.1%	1,830	-3.1%	1,020	73.7%
34 EXPRESS	1,234	820	50.5%	2,008	-38.6%	1,340	-7.9%	794	55.3%
35	2,492	1,416	76.0%	2,421	2.9%	2,661	-6.3%	1,627	53.2%
36	2,648	1,863	42.1%	2,536	4.4%	2,881	-8.1%	1,966	34.7%
37	3,511	2,427	44.6%	3,273	7.3%	3,506	0.1%	2,385	47.2%
38	5,658	3,705	52.7%	6,361	-11.0%	6,326	-10.6%	4,200	34.7%
39 EXPRESS		247		893				194	
40	2,084	1,208	72.5%	1,772	17.6%	2,181	-4.5%	989	110.8%
42	1,024	616	66.1%	820	24.8%	998	2.6%	519	97.2%
46 - LIBERTY CITY CONN. (*)	21	15	44.7%	41	-48.1%	20	7.2%	20	8.1%
51 - FLAGLER MAX	3,663	2,345	56.2%	3,109	17.8%	3,845	-4.7%	1,915	91.2%
52	1,244	793	56.8%	1,261	-1.4%	1,279	-2.8%	801	55.2%
54	2,963	1,927	53.8%	2,940	0.8%	3,090	-4.1%	2,195	35.0%
55 MARLINS SHUTTLE									
56 (*)	324	192	68.9%	354	-8.3%	353	-8.3%	159	104.3%
57	460	264	74.1%	433	6.1%	475	-3.3%	241	91.0%
62	1,756	1,199	46.5%	1,815	-3.3%	1,742	0.8%	1,600	9.7%
71 (*)	641	435	47.3%	711	-9.8%	680	-5.7%	369	73.7%
72 (*)	577	455	26.8%	781	-26.2%	606	-4.9%	371	55.6%

(†) In this table and those which follow, "YOY" stands for "year-over-year", "MOM" for "month-over-month" and "YO2Y" for "year over two years", i.e., current month vs 12 months prior, one month prior, and 24 months prior, respectively.

(\*) Contracted routes

(\*\*) Due to effects from the SARS-CoV-2 pandemic; rides were fare-free beginning March 22, 2020; fares were reinstated on June 1, 2021, in part accounting for the drop in ridership from May 2021.

## METROBUS AVERAGE WEEKDAY BOARDINGS BY ROUTE

Route <i>weekdays</i>	Average Weekday	Average Weekday	Percent Change	Average Weekday	Percent Change	Average Weekday	Percent Change	Average Weekday	Percent Change
	Dec-22	Dec-21	YOY	Feb-20	Current vs Feb-20	Nov-22	MOM	Dec-20	YO2Y
73	2,785	1,702	63.6%	2,124	31.1%	2,907	-4.2%	1,255	122.0%
75	1,257	850	47.9%	1,429	-12.0%	1,274	-1.4%	835	50.5%
77	8,688	5,576	55.8%	7,129	21.9%	8,669	0.2%	5,655	53.6%
79 STREET MAX	526	250	110.1%	361	45.6%	473	11.3%		
82 - WESTCHESTER CIRC. (*)	54	33	64.7%	62	-12.4%	51	6.1%	24	125.3%
87	1,842	1,091	68.9%	1,499	22.9%	1,801	2.3%	982	87.5%
88	2,359	1,456	62.1%	2,076	13.6%	2,311	2.1%	1,441	63.7%
93 - BISCAYNE MAX	3,678	2,175	69.1%	3,334	10.3%	3,365	9.3%	1,354	171.8%
95 EXPRESS	934	574	62.7%	1,690	-44.8%	1,192	-21.7%	361	158.8%
99	1,577	1,042	51.3%	1,473	7.1%	1,557	1.3%	947	66.6%
101 - A (*)	260	143	81.9%	177	47.0%	258	1.0%	100	159.3%
102 - B	2,110	1,262	67.2%	1,778	18.6%	2,083	1.3%	111	1807.6%
103 - C		227		463				307	
104	778	493	57.7%	837	-7.0%	856	-9.1%	300	159.0%
105 - E	1,459	936	56.0%	1,287	13.4%	1,466	-0.4%	889	64.2%
107 - G	1,859	1,181	57.3%	1,713	8.5%	1,790	3.9%	890	108.9%
108 - H	728	357	104.1%	473	54.1%	528	37.9%	346	110.7%
110 - J	3,069	1,968	56.0%	2,508	22.4%	2,942	4.3%	1,664	84.4%
112 - L	8,718	6,091	43.1%	7,636	14.2%	8,804	-1.0%	7,143	22.0%
113 - M	731	508	43.7%	866	-15.6%	636	14.9%	500	46.2%
115 (*)	140	145	-3.7%	180	-22.5%	126	11.0%	190	-26.5%
119 - S	10,462	7,017	49.1%	8,970	16.6%	10,044	4.2%	7,617	37.4%
120 - BEACH MAX	6,939	4,989	39.1%	6,667	4.1%	7,235	-4.1%	4,465	55.4%
132 TRI-RAIL (DORAL)	47	5	819.9%	16	203.9%	47	0.3%	30	56.8%
135	1,355	788	71.8%	1,399	-3.2%	1,354	0.1%	727	86.3%
136	149	115	29.9%	126	18.0%	133	11.7%	40	271.3%
137 - WEST DADE CONN.	2,003	1,139	75.9%	1,626	23.2%	2,042	-1.9%	958	109.2%
150 - MIAMI BEACH AIRPORT FLYER	2,245	1,339	67.7%	1,867	20.3%	2,214	1.4%	1,026	118.8%
155 - BISCAYNE GARDENS CIRCULATOR (*)	38	33	15.3%	44	-14.0%	37	1.3%	32	19.0%
175 - NW MIAMI-DADE EXPRESS				33					
183	3,318	2,170	53.0%	3,149	5.4%	3,278	1.2%	2,318	43.2%
195 EXPRESS - BROWARD BLVD				372					
196 EXPRESS - SHERIDAN ST				383					
200 - CUTLER BAY LOCAL	123	97	26.1%	158	-22.3%	110	11.6%	117	4.7%
202 - LITTLE HAITI CONN. (*)	76	109	-30.4%	140	-45.7%	72	4.8%	122	-37.9%
204 KILLIAN KAT	593	281	110.8%	1,071	-44.7%	1,040	-43.0%		



## METROBUS AVERAGE WEEKDAY BOARDINGS BY ROUTE

Route <b>weekdays</b>	Average Weekday	Average Weekday	Percent Change	Average Weekday	Percent Change	Average Weekday	Percent Change	Average Weekday	Percent Change
	Dec-22	Dec-21	YOY	Feb-20	Current vs Feb-20	Nov-22	MOM	Dec-20	YO2Y
207 (7st) - LITTLE HAVANA CIRC	1,694	1,064	59.3%	1,489	13.8%	1,699	-0.3%	722	134.5%
208 (8st) - LITTLE HAVANA CIRC	1,599	983	62.7%	1,308	22.3%	1,638	-2.4%	816	96.0%
210 - SKYLAKE CIRC (*)	281	299	-6.0%	282	-0.2%	328	-14.3%	284	-0.9%
211 - OVERTOWN CIRC. (*)	92	86	7.7%	58	59.1%	98	-5.5%	47	96.0%
212 - SWEETWATER CIRC. (*)	21	25	-18.2%	15	40.8%	16	26.4%	16	29.8%
217 - BUNCHE PARK CIRC (*)	52	56	-7.4%	97	-46.4%	58	-10.2%	57	-8.7%
238 EAST/WEST CONN.	617	366	68.6%	449	37.2%	602	2.4%	302	103.9%
241 TUTTLELIMITED	231	42	447.0%			227	1.7%		
246 - NIGHT OWL	57	29	97.2%	94	-39.3%	59	-3.6%	68	-17.0%
248 - PRINCETON CIRCULATOR (*)	136	64	113.0%	135	1.3%	135	0.6%	66	107.1%
252 - CORAL REEF MAX	911	512	77.8%	851	7.0%	925	-1.5%	404	125.3%
254 - BROWNSVILLE CIRC. (*)	6	7	-14.1%	19	-69.5%	6	-8.1%	13	-53.9%
267 - LUDLAM LIMITED (*)	145	92	57.8%	149	-2.7%	155	-6.8%	93	55.6%
272 SUNSET KAT (*)	334	269	24.4%	550	-39.3%	346	-3.4%	209	59.7%
277 - 7th AVENUE MAX	687	417	64.8%	683	0.5%	786	-12.6%	438	57.0%
286 - NORTH POINTE CIRC. (*)	86	35	149.8%	97	-10.9%	82	5.9%	35	148.0%
287 - SAGA BAY MAX	284	175	62.4%	358	-20.6%	299	-5.0%	108	162.3%
288 - KENDALL CRUISER	457	286	59.8%	762	-40.1%	835	-45.3%		
295 EXPRESS - BROWARD BLVD - CIVIC CENTER				233					
296 EXPRESS - SHERIDAN ST - CIVIC CENTER				215					
297-27th AVENUE ORANGE MAX	1,162	772	50.4%	1,356	-14.3%	1,322	-12.1%	717	62.2%
301 DADE-MONROE EXPRESS (*)	815	755	7.9%	841	-3.1%	785	3.9%	847	-3.8%
302 CARD SOUND EXPRESS (*)	100	67	49.0%	86	15.8%	102	-1.8%	78	28.5%
344 (*)	50	44	14.8%	96	-47.5%	57	-12.2%	66	-24.0%
500	76	6	1150.8%	81	-6.0%	55	38.1%	42	83.1%
836 EXPRESS	218	109	99.8%			334	-34.6%		
837 EXPRESS	80					86	-6.9%		
GREEN HILLS SHUTTLE (*)	5	4	26.7%	9	-47.2%	6	-17.4%	6	-13.6%
KINGS CREEK SHUTTLE (*)	13	13	3.1%	13	1.5%	22	-40.0%	10	29.4%
SIERRA LAKES SHUTTLE (*)	11	17	-36.0%	45	-75.6%	14	-22.8%	17	-36.5%
ROBERT SHARP SHUTTLE (*)	36	22	67.8%	10	281.6%	19	92.8%	19	92.8%
AHEPA SHUTTLE (*)	17	21	-21.0%	21	-20.0%	18	-7.8%	18	-7.8%
<b>Total</b>	<b>175,158</b>	<b>114,511</b>	<b>53.0%</b>	<b>167,711</b>	<b>4.4%</b>	<b>177,276</b>	<b>-1.2%</b>	<b>111,394</b>	<b>57.2%</b>

(\*) The following routes are entirely operated under contract: 1, 29, 46, 56, 71, 72, 82, 101-A, 115, 155, 202, 210, 211, 212, 217, 246, 248, 254, 267, 272, 286, 301, 302 and 344.

(1) Includes shuttles and those routes which were not run both years.

(2) Several express routes were suspended beginning at the end of March 2020, due to the SARS-CoV-2 pandemic, while other routes had alignment and schedule modifications made to them, in an ongoing effort to optimize service delivery.

## METROBUS AVERAGE SATURDAY BOARDINGS BY ROUTE

Route	Average Saturday	Average Saturday	Percent Change	Average Saturday	Percent Change	Average Saturday	Percent Change	Average Saturday	Percent Change
	Dec-22	Dec-21	YOY	Feb-20	Current vs Feb-20	Nov-22	MOM	Dec-20	YO2Y
<b>Saturdays</b>									
1 (*)	165	116	42.4%	215	-23.2%	191	-13.6%	176	-6.1%
2	1,563	984	58.9%	1,616	-3.3%	1,670	-6.4%	1,040	50.3%
3	5,915	3,598	64.4%	5,229	13.1%	6,270	-5.7%	3,367	75.7%
7	1,927	1,342	43.6%	1,887	2.1%	2,172	-11.3%	1,388	38.9%
8	2,425	1,683	44.1%	2,027	19.6%	2,545	-4.7%	2,033	19.2%
9	3,481	2,160	61.1%	3,034	14.7%	3,689	-5.7%	2,901	20.0%
10	1,891	1,227	54.1%	1,896	-0.2%	2,148	-12.0%	1,473	28.4%
11	6,512	3,627	79.6%	5,182	25.7%	6,483	0.4%	4,099	58.9%
16	1,753	1,062	65.1%	1,566	11.9%	1,821	-3.7%	1,256	39.6%
17	2,285	1,556	46.9%	2,363	-3.3%	2,257	1.2%	1,599	42.9%
22	2,379	1,436	65.6%	2,084	14.1%	2,485	-4.3%	1,658	43.5%
24 - Coral Way Limited	1,387	789	76.0%	1,165	19.0%	1,694	-18.1%	1,023	35.6%
27	4,277	2,532	68.9%	4,034	6.0%	4,347	-1.6%	3,487	22.7%
31 - BUSWAY LOCAL	966	569	69.9%	896	7.9%	1,088	-11.2%	833	16.0%
32	1,127	695	62.2%	1,029	9.5%	1,253	-10.1%	1,028	9.6%
33	1,134	650	74.6%	951	19.3%	1,167	-2.8%	663	71.2%
35	1,500	888	69.0%	1,372	9.3%	1,495	0.3%	1,043	43.8%
36	1,548	1,015	52.5%	1,289	20.1%	1,518	2.0%	1,395	11.0%
37	2,097	1,451	44.6%	2,090	0.3%	2,273	-7.8%	1,519	38.1%
38	4,364	2,854	52.9%	4,715	-7.5%	5,133	-15.0%	2,905	50.2%
40	734	508	44.7%	655	12.2%	854	-14.0%	479	53.3%
42	607	376	61.7%	552	10.1%	670	-9.4%	542	12.0%
52	683	357	91.5%	686	-0.5%	693	-1.5%	575	18.8%
54	1,823	1,159	57.4%	1,727	5.6%	2,140	-14.8%	1,676	8.8%
55 MARLINS SHUTTLE									
62	1,434	767	87.0%	1,343	6.7%	1,438	-0.3%	1,391	3.1%
71 (*)	231	143	61.3%	252	-8.4%	269	-14.4%	207	11.3%
72 (*)	338	254	33.1%	350	-3.3%	384	-11.9%	201	68.0%
73	1,172	807	45.3%	860	36.2%	1,371	-14.5%	737	58.9%
75	512	332	54.3%	468	9.4%	523	-2.2%	484	5.8%
77	5,248	3,351	56.6%	4,197	25.0%	5,731	-8.4%	2,773	89.2%
87	580	355	63.5%	402	44.1%	632	-8.2%	451	28.7%
88	1,656	1,087	52.3%	1,620	2.2%	1,895	-12.6%	1,114	48.7%
99	1,012	645	57.0%	849	19.2%	1,104	-8.4%	668	51.5%

## METROBUS AVERAGE SATURDAY BOARDINGS BY ROUTE

Route	Average Saturday	Average Saturday	Percent Change	Average Saturday	Percent Change	Average Saturday	Percent Change	Average Saturday	Percent Change
	Dec-22	Dec-21	YOY	Feb-20	Current vs Feb-20	Nov-22	MOM	Dec-20	YO2Y
<b>Saturdays</b>									
101 - A (*)	35	55	-37.0%	71	-50.8%	73	-52.0%	59	-40.8%
102 - B	1,035	645	60.3%	851	21.6%	1,160	-10.8%	116	790.0%
103 - C		128		315				274	
104	423	282	50.0%	468	-9.8%	444	-4.8%	78	443.5%
105 - E	841	431	95.1%	619	35.8%	813	3.4%	561	50.0%
107 - G	1,267	935	35.6%	1,066	18.9%	1,275	-0.6%	878	44.4%
108 - H	451	235	91.9%	372	21.3%	475	-4.9%	372	21.5%
110 - J	2,173	1,387	56.6%	1,952	11.3%	2,193	-0.9%	1,715	26.7%
112 - L	7,410	4,554	62.7%	5,667	30.7%	7,153	3.6%	5,309	39.6%
113 - M	448	376	19.2%	503	-11.0%	255	75.9%	390	14.8%
115 (*)	54	82	-34.3%	82	-34.3%	69	-21.2%	198	-72.8%
119 - S	9,013	5,342	68.7%	6,861	31.4%	8,468	6.4%	5,835	54.5%
120 - BEACH MAX	6,256	3,456	81.0%	4,744	31.9%	5,932	5.5%	3,627	72.5%
135	482	315	53.1%	539	-10.6%	499	-3.5%	306	57.6%
137 - WEST DADE CONN.	1,370	727	88.5%	1,027	33.4%	1,384	-1.0%	797	72.0%
150 - MIAMI BEACH AIRPORT FLYER	2,111	1,311	61.0%	1,604	31.6%	2,157	-2.1%	912	131.5%
183	2,058	1,250	64.7%	1,790	15.0%	2,027	1.5%	1,436	43.3%
200 - CUTLER BAY LOCAL	93	56	65.7%	119	-22.1%	127	-26.8%	83	12.5%
202 - LITTLEHAITI CONN. (*)	27	73	-62.6%	50	-45.4%	26	4.4%	117	-76.5%
207 (7st) - LITTLE HAVANA CIRC	904	756	19.6%	1,032	-12.4%	1,109	-18.4%	946	-4.4%
208 (8st) - LITTLE HAVANA CIRC	1,259	638	97.5%	1,044	20.5%	1,031	22.1%	911	38.3%
210 - SKYLAKE CIRC (*)	82	108	-23.7%	165	-50.2%	92	-10.4%	159	-48.2%
241 TUTTLE LIMITED	131	5	2512.0%			244	-46.4%		
246 - NIGHT OWL	50	35	42.9%	84	-40.8%	53	-5.2%	43	16.3%
252 - CORAL REEF MAX	379	224	69.1%	302	25.4%	408	-7.0%	216	75.8%
286 - NORTH POINTE CIRC. (*)	43	32	34.8%	41	4.9%	66	-34.7%	32	34.8%
301 DADE-MONROE EXPRESS (*)	808	658	23.0%	801	0.9%	778	3.9%	909	-11.0%
302 CARD SOUND EXPRESS (*)	87	31	178.4%	57	53.7%	90	-2.8%	55	57.5%
338 - WEEKEND EXPRESS	241	126	92.0%	237	1.9%	307	-21.4%	105	129.0%
500	95	7	1361.5%	70	35.7%	43	123.5%	57	65.9%
12/21 WEEKEND INTERL.	2,705	1,677	61.3%	2,528	7.0%	2,727	-0.8%	2,147	26.0%
FEDERATION GARDENS SHUTTLE (*)	19	24	-18.0%	28	-31.7%	21	-6.5%	13	55.2%
<b>Total</b>	<b>107,106</b>	<b>66,354</b>	<b>61.4%</b>	<b>93,742</b>	<b>14.3%</b>	<b>110,932</b>	<b>-3.4%</b>	<b>74,861</b>	<b>43.1%</b>

## METROBUS AVERAGE SUNDAY BOARDINGS BY ROUTE

Route	Average Sunday	Average Sunday	Percent Change	Average Sunday	Percent Change	Average Sunday	Percent Change	Average Sunday	Percent Change
	Dec-22	Dec-21	YOY	Feb-20	Current vs Feb-20	Nov-22	MOM	Dec-20	YO2Y
<b>Sundays</b>									
1 (*)	138	137	0.5%	201	-31.5%	145	-5.2%	138	-0.5%
2	1,076	837	28.5%	1,335	-19.4%	963	11.7%	575	87.0%
3	4,281	3,355	27.6%	4,353	-1.6%	4,316	-0.8%	2,869	49.2%
7	1,379	1,118	23.4%	1,654	-16.6%	1,467	-6.0%	1,069	29.0%
8	1,808	1,532	18.0%	1,746	3.5%	1,817	-0.5%	1,451	24.6%
9	2,351	1,821	29.2%	2,549	-7.8%	2,531	-7.1%	1,856	26.7%
10	1,416	1,114	27.1%	1,441	-1.8%	1,352	4.7%	982	44.2%
11	3,919	3,019	29.8%	3,917	0.1%	4,013	-2.3%	2,733	43.4%
16	948	755	25.5%	997	-4.9%	1,009	-6.1%	609	55.6%
17	1,715	1,271	34.9%	1,833	-6.5%	1,585	8.2%	1,028	66.7%
22	1,687	1,159	45.5%	1,548	9.0%	1,712	-1.5%	987	70.9%
24 - Coral Way Limited	969	784	23.5%	905	7.1%	1,045	-7.3%	763	27.0%
27	2,685	2,149	24.9%	2,918	-8.0%	2,837	-5.4%	2,421	10.9%
31 - BUSWAY LOCAL	594	426	39.5%	715	-17.0%	671	-11.6%	398	49.1%
32	698	469	48.6%	772	-9.7%	784	-11.1%	465	50.0%
33	661	433	52.6%	607	8.9%	629	5.0%	493	33.9%
35	1,051	736	42.8%	942	11.6%	1,022	2.8%	833	26.2%
36	1,023	808	26.7%	1,111	-7.9%	1,064	-3.9%	1,068	-4.2%
37	1,541	1,310	17.6%	1,739	-11.4%	1,650	-6.6%	1,356	13.6%
38	2,770	2,673	3.6%	4,147	-33.2%	4,029	-31.2%	2,854	-3.0%
40	484	340	42.1%	447	8.1%	487	-0.6%	318	51.9%
42	360	288	25.0%	416	-13.6%	409	-12.0%	308	16.6%
52	398	307	29.5%	466	-14.6%	438	-9.2%	315	26.2%
54	1,009	891	13.2%	1,171	-13.9%	1,203	-16.2%	1,137	-11.3%
55 MARLINS SHUTTLE									
62	837	531	57.7%	891	-6.0%	805	4.0%	769	8.8%
71 (*)	115	142	-19.2%	162	-29.2%	96	20.0%	149	-22.9%
72 (*)	296	276	7.2%	265	12.0%	290	2.3%	162	83.1%
73	602	416	44.9%	495	21.7%	559	7.7%	343	75.4%
75	302	242	24.5%	271	11.4%	274	9.9%	263	14.6%
77	3,112	2,234	39.3%	2,815	10.6%	3,689	-15.6%	2,003	55.4%
87	326	261	24.9%	319	2.1%	355	-8.3%	262	24.2%
88	1,169	948	23.3%	1,286	-9.1%	1,164	0.4%	816	43.3%
99	773	516	49.9%	658	17.5%	689	12.1%	521	48.3%

## METROBUS AVERAGE SUNDAY BOARDINGS BY ROUTE

Route	Average Sunday	Average Sunday	Percent Change	Average Sunday	Percent Change	Average Sunday	Percent Change	Average Sunday	Percent Change
	Dec-22	Dec-21	YOY	Feb-20	Current vs Feb-20	Nov-22	MOM	Dec-20	YO2Y
<b>Sundays</b>									
101 - A (*)	21	44	-52.5%	56	-62.2%	52	-59.6%	35	-39.3%
102 - B	730	639	14.3%	717	1.9%	863	-15.4%	155	371.1%
103 - C		100		212				182	
104	260	216	20.2%	317	-18.0%	321	-19.0%	102	155.4%
105 - E	687	517	32.9%	616	11.6%	699	-1.7%	582	18.0%
107 - G	843	683	23.4%	895	-5.9%	915	-7.9%	552	52.7%
108 - H	355	264	34.4%	328	8.1%	421	-15.7%	292	21.7%
110 - J	1,662	1,279	30.0%	1,638	1.4%	1,651	0.6%	1,203	38.1%
112 - L	4,880	3,618	34.9%	4,804	1.6%	5,012	-2.6%	3,782	29.0%
113 - M	393	369	6.4%	431	-8.8%	482	-18.5%	269	46.0%
115 (*)	36	89	-59.8%	80	-55.3%	49	-26.4%	162	-77.9%
119 - S	8,423	5,618	49.9%	7,141	18.0%	7,900	6.6%	5,606	50.2%
120 - BEACH MAX	3,564	2,764	29.0%	3,469	2.7%	3,574	-0.3%	2,254	58.2%
135	328	220	49.0%	349	-6.0%	357	-8.0%	234	40.4%
137 - WEST DADE CONN.	851	672	26.8%	879	-3.2%	997	-14.6%	560	52.1%
150 - MIAMI BEACH AIRPORT FLYER	2,194	1,264	73.5%	1,574	39.4%	1,980	10.8%	996	120.2%
183	1,456	1,129	29.0%	1,413	3.0%	1,353	7.6%	1,113	30.7%
200 - CUTLER BAY LOCAL	72			59	22.6%	75	-3.8%	45	58.0%
202 - LITTLE HAITI CONN. (*)	23	66	-65.3%	39	-41.0%	22	5.5%	98	-76.5%
207 (7st) - LITTLE HAVANA CIRC	743	561	32.4%	796	-6.7%	660	12.6%	545	36.3%
208 (8st) - LITTLE HAVANA CIRC	809	540	49.9%	911	-11.3%	798	1.3%	667	21.2%
210 - SKYLAKE CIRC (*)	94	128	-26.3%	143	-34.3%	82	15.2%	120	-21.9%
241 TUTTLELIMITED	134	21	535.7%			192	-30.5%		
246 - NIGHT OWL	61	28	115.0%	87	-30.2%	56	8.9%	61	-0.7%
252 - CORAL REEF MAX	313	199	57.2%	199	57.6%	296	5.7%	159	97.5%
301 DADE-MONROE EXPRESS (*)	702	679	3.4%	751	-6.6%	713	-1.6%	827	-15.1%
302 CARD SOUND EXPRESS (*)	89	48	84.4%	57	55.3%	78	13.2%	56	59.2%
338 - WEEKEND EXPRESS	202	175	15.7%	252	-19.7%	281	-28.1%	92	119.4%
500	76	8	883.9%	83	-7.9%	52	47.8%	46	64.3%
12/21 WEEKEND INTERL.		1,451		2,048		2,179		1,618	
<b>Total</b>	<b>72,484</b>	<b>56,810</b>	<b>27.6%</b>	<b>75,428</b>	<b>-3.9%</b>	<b>77,210</b>	<b>-6.1%</b>	<b>54,728</b>	<b>32.4%</b>

## METROBUS TOTAL MONTHLY BOARDINGS BY ROUTE

Route	Total Month	Total Month	Percent Change	Total Month	Percent Change	Total Month	Percent Change	Total Month	Percent Change
	Dec-22	Dec-21	YOY	Feb-20	Current vs Feb-20	Nov-22	MOM	Dec-20	YO2Y
<b>Monthly Total</b>									
1 (*)	6,013	4,648	29.4%	5,558	8.2%	6,144	-2.1%	5,256	14.4%
2	67,559	48,438	39.5%	75,463	-10.5%	68,335	-1.1%	48,249	40.0%
3	170,535	108,013	57.9%	146,294	16.6%	154,891	10.1%	109,507	55.7%
7	98,320	65,521	50.1%	86,077	14.2%	94,775	3.7%	53,506	83.8%
8	118,037	85,006	38.9%	95,295	23.9%	118,870	-0.7%	88,041	34.1%
9	155,305	109,572	41.7%	135,924	14.3%	151,178	2.7%	124,795	24.4%
10	65,149	44,886	45.1%	64,874	0.4%	63,131	3.2%	39,436	65.2%
11	231,675	160,503	44.3%	187,425	23.6%	223,309	3.7%	149,050	55.4%
12	61,982	40,553	52.8%	55,585	11.5%	56,275	10.1%	44,743	38.5%
16	55,975	37,813	48.0%	49,061	14.1%	52,533	6.6%	34,153	63.9%
17	99,311	68,485	45.0%	96,715	2.7%	91,203	8.9%	63,968	55.3%
19	31,520	18,702	68.5%	30,847	2.2%	31,070	1.4%	21,734	45.0%
21	37,664	27,422	37.3%	36,341	3.6%	37,863	-0.5%	33,577	12.2%
22	110,912	65,063	70.5%	89,404	24.1%	104,929	5.7%	63,382	75.0%
24 - Coral Way Limited	59,656	35,329	68.9%	36,237	64.6%	56,666	5.3%	37,100	60.8%
27	179,614	124,084	44.8%	171,282	4.9%	173,385	3.6%	134,381	33.7%
29 (*)	10,117	7,746	30.6%	10,684	-5.3%	9,775	3.5%	7,579	33.5%
31 - BUSWAY LOCAL	30,966	18,346	68.8%	29,125	6.3%	29,912	3.5%	17,211	79.9%
32	64,714	40,188	61.0%	56,027	15.5%	62,150	4.1%	44,812	44.4%
33	47,311	28,942	63.5%	40,918	15.6%	46,244	2.3%	27,565	71.6%
34 EXPRESS	27,140	18,854	43.9%	40,159	-32.4%	28,134	-3.5%	17,473	55.3%
35	66,524	39,060	70.3%	59,041	12.7%	66,963	-0.7%	44,127	50.8%
36	70,090	50,141	39.8%	61,606	13.8%	71,898	-2.5%	54,163	29.4%
37	93,878	66,870	40.4%	82,870	13.3%	90,962	3.2%	65,333	43.7%
38	157,374	107,313	46.6%	167,379	-6.0%	173,520	-9.3%	118,293	33.0%
39 EXPRESS		5,677		17,853				4,263	
40	51,445	31,171	65.0%	40,497	27.0%	51,652	-0.4%	25,257	103.7%
42	26,998	16,827	60.4%	20,825	29.6%	25,676	5.1%	15,133	78.4%
46 - LIBERTY CITY CONN. (*)	465	336	38.4%	814	-42.9%	414	12.3%	430	8.1%
51 - FLAGLER MAX	80,587	53,925	49.4%	62,186	29.6%	80,739	-0.2%	42,139	91.2%
52	32,364	20,893	54.9%	30,522	6.0%	31,827	1.7%	21,501	50.5%
54	78,344	52,509	49.2%	72,125	8.6%	79,457	-1.4%	60,689	29.1%
55 MARLINS SHUTTLE									
56 (*)	7,132	4,415	61.5%	7,071	0.9%	7,421	-3.9%	3,491	104.3%
57	10,111	6,071	66.5%	8,665	16.7%	9,980	1.3%	5,295	91.0%
62	49,141	32,763	50.0%	46,582	5.5%	46,368	6.0%	44,607	10.2%
71 (*)	15,719	11,154	40.9%	16,118	-2.5%	15,830	-0.7%	9,696	62.1%
72 (*)	15,561	12,576	23.7%	18,433	-15.6%	15,711	-1.0%	9,766	59.3%

## METROBUS TOTAL MONTHLY BOARDINGS BY ROUTE

Route	Total Month	Total Month	Percent Change	Total Month	Percent Change	Total Month	Percent Change	Total Month	Percent Change
	Dec-22	Dec-21	YOY	Feb-20	Current vs Feb-20	Nov-22	MOM	Dec-20	YO2Y
<b>Monthly Total</b>									
73	69,535	44,035	57.9%	48,767	42.6%	69,328	0.3%	32,265	115.5%
75	31,414	21,842	43.8%	31,994	-1.8%	30,229	3.9%	21,622	45.3%
77	229,815	150,590	52.6%	174,833	31.4%	223,427	2.9%	145,522	57.9%
79 STREET MAX	11,573	5,758	101.0%	7,228	60.1%	9,929	16.6%		
82 - WESTCHESTER CIRC. (*)	1,356	875	55.0%	1,482	-8.5%	1,218	11.3%	647	109.6%
87	44,730	27,549	62.4%	33,273	34.4%	42,118	6.2%	24,724	80.9%
88	64,854	41,625	55.8%	54,772	18.4%	61,936	4.7%	40,241	61.2%
93 - BISCAYNE MAX	80,920	50,016	61.8%	66,684	21.3%	70,672	14.5%	29,777	171.8%
95 EXPRESS	20,539	13,197	55.6%	33,796	-39.2%	25,037	-18.0%	7,937	158.8%
99	42,845	28,606	49.8%	36,325	17.9%	40,559	5.6%	26,102	64.1%
101 - A (*)	5,979	3,686	62.2%	4,114	45.3%	5,959	0.3%	2,614	128.7%
102 - B	54,506	34,157	59.6%	42,683	27.7%	52,695	3.4%	3,673	1384.0%
103 - C		6,122		11,682				8,768	
104	20,270	13,339	52.0%	20,351	-0.4%	21,357	-5.1%	7,428	172.9%
105 - E	39,059	25,314	54.3%	31,302	24.8%	37,524	4.1%	24,704	58.1%
107 - G	50,598	33,644	50.4%	43,178	17.2%	47,255	7.1%	25,842	95.8%
108 - H	19,698	10,204	93.0%	12,624	56.0%	15,096	5.0%	10,548	86.7%
110 - J	85,038	55,915	52.1%	66,481	27.9%	78,812	7.9%	49,488	71.8%
112 - L	248,361	172,773	43.7%	200,268	24.0%	238,556	4.1%	197,297	25.9%
113 - M	19,884	14,669	35.6%	21,548	-7.7%	16,780	18.5%	13,902	43.0%
115 (*)	3,484	4,020	-13.3%	4,334	-19.6%	3,157	10.4%	5,781	-39.7%
119 - S	308,933	205,230	50.5%	242,257	27.5%	284,305	8.7%	218,936	41.1%
120 - BEACH MAX	198,188	139,614	42.0%	170,942	15.9%	193,531	2.4%	123,996	59.8%
132 TRI-RAIL (DORAL)	1,043	67	1456.7%	312	234.3%	993	5.0%	665	56.8%
135 (*)	33,520	20,270	65.4%	32,067	4.5%	32,211	4.1%	18,383	82.3%
136	3,275	2,636	24.2%	2,524	29.8%	2,798	17.0%	882	271.3%
137 - WEST DADE CONN.	54,329	31,786	70.9%	41,167	32.0%	53,413	1.7%	27,055	100.8%
150 - MIAMI BEACH AIRPORT FLYER	68,717	41,088	67.2%	51,651	33.0%	65,015	5.7%	31,198	120.3%
155 - BISCAYNE GARDENS CIRCULATOR (*)	833	755	10.3%	881	-5.4%	785	6.1%	700	19.0%
175 - NW MIAMI-DADE EXPRESS				661					
183	89,115	59,413	50.0%	77,570	14.9%	83,706	6.5%	62,305	43.0%
195 EXPRESS - BROWARD BLVD				7,441					
196 EXPRESS - SHERIDAN ST				7,658					
200 - CUTLER BAY LOCAL	3,448	2,265	52.2%	3,984	-13.5%	3,186	8.2%	3,134	10.0%
202 - LITTLE HAITI CONN. (*)	1,897	3,063	-38.1%	3,200	-40.7%	1,733	9.5%	3,644	-47.9%
204 KILLIAN KAT	13,040	6,468	101.6%	21,418	-39.1%	21,848	-40.3%		

## METROBUS TOTAL MONTHLY BOARDINGS BY ROUTE

Route	Total Month	Total Month	Percent Change	Total Month	Percent Change	Total Month	Percent Change	Total Month	Percent Change
	Dec-22	Dec-21	YOY	Feb-20	Current vs Feb-20	Nov-22	MOM	Dec-20	YO2Y
<b>Monthly Total</b>									
207 (7st) - LITTLEHAVANA CIRC	44,757	29,730	50.5%	38,127	17.4%	43,414	3.1%	22,399	99.8%
208 (8st) - LITTLEHAVANA CIRC	44,714	27,315	63.7%	35,018	27.7%	42,519	5.2%	24,933	79.3%
210 - SKYLAKE CIRC (*)	6,974	7,824	-10.9%	7,033	-0.8%	7,664	-9.0%	7,481	-6.8%
211 - OVERTOWN CIRC. (*)	2,029	1,970	3.0%	1,159	75.1%	2,050	-1.0%	1,035	96.0%
212 - SWEETWATER CIRC. (*)	457	584	-21.7%	295	54.9%	345	32.5%	352	29.8%
217 - BUNCHE PARK CIRC (*)	1,150	1,298	-11.4%	1,949	-41.0%	1,223	-6.0%	1,260	-8.7%
238 EAST/WEST CONN.	13,563	8,410	61.3%	8,987	50.9%	12,640	7.3%	6,651	103.9%
241 TUTTLE LIMITED	6,277	449	1298.0%			6,711	-6.5%		
246 - NIGHT OWL	1,685	915	84.2%	2,641	-36.2%	1,727	-2.4%	1,983	-15.0%
248 - PRINCETON CIRCULATOR (*)	2,997	1,471	103.7%	2,690	11.4%	2,845	5.3%	1,447	107.1%
252 - CORAL REEF MAX	23,188	13,477	72.1%	19,325	20.0%	22,530	2.9%	10,549	119.8%
254 - BROWNSVILLE CIRC. (*)	129	157	-17.8%	384	-66.4%	134	-3.7%	280	-53.9%
267 - LUDLAM LIMITED (*)	3,186	2,111	50.9%	2,978	7.0%	3,263	-2.4%	2,048	55.6%
272 SUNSET KAT (*)	7,351	6,178	19.0%	11,004	-33.2%	7,263	1.2%	4,604	59.7%
277 - 7th AVENUE MAX	15,117	9,587	57.7%	13,669	10.6%	16,501	-8.4%	9,627	57.0%
286 - NORTH POINTE CIRC. (*)	2,116	923	129.3%	2,145	-1.4%	1,977	7.0%	894	136.7%
287 - SAGA BAY MAX	6,253	4,026	55.3%	7,160	-12.7%	6,283	-0.5%	2,384	162.3%
288 - KENDALL CRUISER	10,053	6,578	52.8%	15,249	-34.1%	17,542	-42.7%		
295 EXPRESS - BROWARD BLVD - CIVIC CENTER				4,668					
296 EXPRESS - SHERIDAN ST - CIVIC CENTER				4,297					
297-27th AVENUE ORANGE MAX	25,562	18,024	41.8%	27,125	-5.8%	27,766	-7.9%	15,764	62.2%
301 DADE-MONROE EXPRESS (*)	24,779	22,714	9.1%	23,838	3.9%	23,156	7.0%	26,398	-6.1%
302 CARD SOUND EXPRESS (*)	2,987	1,859	60.7%	2,236	33.6%	2,886	3.5%	2,209	35.2%
338 - WEEKEND EXPRESS	2,014	1,201	67.7%	2,191	-8.1%	2,633	-23.5%	882	128.3%
344 (*)	1,108	1,009	9.8%	1,919	-42.3%	1,205	-8.0%	1,458	-24.0%
500	2,455	197	1146.2%	2,301	6.7%	1,586	54.8%	1,376	78.4%
836 EXPRESS	4,796	2,509	91.2%			7,005	-31.5%		
837 EXPRESS	1,769					259	583.0%		
12/21 WEEKEND INTERL.	13,525	12,512	8.1%	20,830	-35.1%	21,804	-38.0%	16,676	-18.9%
GREEN HILLS SHUTTLE (*)	19	15	26.7%	36	-47.2%	23	-17.4%	22	-13.6%
KINGS CREEK SHUTTLE (*)	66	64	3.1%	52	26.9%	66	0.0%	51	29.4%
SIERRA LAKES SHUTTLE (*)	55	86	-36.0%	180	-69.4%	57	-3.5%	52	5.8%
ROBERT SHARP SHUTTLE (*)	145	108	34.3%	38	281.6%	94	54.3%	94	54.3%
AHEPA SHUTTLE (*)	83	105	-21.0%	83	0.0%	54	53.7%	90	-7.8%
FEDERATION GARDENS SHUTTLE (*)	97	71	36.6%	142	-31.7%	83	16.9%	50	94.0%
<b>Total</b>	<b>4,677,460</b>	<b>3,123,883</b>	<b>49.7%</b>	<b>4,123,083</b>	<b>13.4%</b>	<b>4,549,666</b>	<b>2.8%</b>	<b>3,022,530</b>	<b>54.8%</b>



## YEAR-OVER-YEAR BUS RIDERSHIP BY ROUTE SERVICE TYPE

Boardings by Service Type and Route	Average Weekday	Average Weekday	Percent Change	Average Saturday	Average Saturday	Percent Change	Average Sunday	Average Sunday	Percent Change	Total Monthly	Total Monthly	Percent Change
	Dec-22	Dec-21	22 vs 21	Dec-22	Dec-21	22 vs 21	Dec-22	Dec-21	22 vs 21	Dec-22	Dec-21	22 vs 21
<b>Directly Operated Express Routes (1)</b>												
34 EXPRESS	1,234	820	50.5%							27,140	18,854	43.9%
39 EXPRESS		247									5,677	
95-EXPRESS	934	574	62.7%							20,539	13,197	55.6%
150-MIAMI BEACH AIRPORT FLYER	2,245	1,339	67.7%	2,111	1,311	61.0%	2,194	1,264	73.5%	68,717	41,088	67.2%
175 - NW MIAMI-DADE EXPRESS												
195 EXPRESS - BROWARD BLVD												
196 EXPRESS - SHERIDAN ST												
295 EXPRESS - BROWARD BLVD - CIVIC CENTER												
296 EXPRESS - SHERIDAN ST - CIVIC CENTER												
204 KAT-KILLIAN	593	281	110.8%							13,040	6,468	101.6%
288 KENDALL CRUISER	457	286	59.8%							10,053	6,578	52.8%
338 - WEEKEND EXPRESS				241	126	92.0%	202	175	15.7%	2,014	1,201	67.7%
836 EXPRESS	218	109								4,796	2,509	91.2%
837 EXPRESS	80									1,769		
<b>Subtotal Express Routes</b>	<b>5,760</b>	<b>3,655</b>	<b>57.6%</b>	<b>2,352</b>	<b>1,437</b>	<b>63.7%</b>	<b>2,396</b>	<b>1,439</b>	<b>66.5%</b>	<b>148,068</b>	<b>95,572</b>	<b>54.9%</b>
<b>Percentage of All Bus Routes</b>	<b>3.3%</b>	<b>3.2%</b>		<b>2.2%</b>	<b>2.2%</b>		<b>3.3%</b>	<b>2.5%</b>		<b>3.2%</b>	<b>3.1%</b>	
<b>Contracted Routes</b>												
1	211	158	33.3%	165	116	42.4%	138	137	0.5%	6,013	4,648	29.4%
29	460	337	36.5%							10,117	7,746	30.6%
35												
46 - LIBERTY CITY CONN.	21	15	44.7%							465	336	38.4%
56	324	192	68.9%							7,132	4,415	61.5%
71	641	435	47.3%	231	143	61.3%	115	142	-19.2%	15,719	11,154	40.9%
72	577	455	26.8%	338	254	33.1%	296	276	7.2%	15,561	12,576	23.7%
82 - WESTCHESTER CIRC	54	33	64.7%	34	31	11.2%				1,356	875	55.0%
101 - A	260	143	81.9%	35	55	-37.0%	21	44	-52.5%	5,979	3,686	62.2%
115	140	145	-3.7%	54	82	-34.3%	36	89	-59.8%	3,484	4,020	-13.3%
155 - BISCAYNE GARDENS CIRC	38	33	15.3%							833	755	10.3%
202 - LITTLE HAITI CONN.	76	109	-30.4%	27	73	-62.6%	23	66	-65.3%	1,897	3,063	-38.1%
210 - SKYLAKE CIRC	281	299	-6.0%	82	108	-23.7%	94	128	-26.3%	6,974	7,824	-10.9%
211-OVERTOWN CIRC	92	86	7.7%							2,029	1,970	3.0%
212-SWEETWATER CIRC	21	25	-18.2%							457	584	-21.7%
217 - BUNCHE PARK CIRC	52	56	-7.4%							1,150	1,298	-11.4%
246 - NIGHT OWL	57	29	97.2%	50	35	42.9%	61	28	115.0%	1,685	915	84.2%
248 - PRINCETON CIRCULATOR	136	64	113.0%							2,997	1,471	103.7%
254-BROWNSVILLE CIRC	6	7	-14.1%							129	157	-17.8%
286-NORTH POINTE CIRC	86	35	149.8%	43	32	34.8%				2,116	923	129.3%
344	50	44	14.8%							1,108	1,009	9.8%
<b>Subtotal Contracted Reg. &amp; Circ. Routes</b>	<b>3,583</b>	<b>2,699</b>	<b>32.8%</b>	<b>1,059</b>	<b>929</b>	<b>14.0%</b>	<b>783</b>	<b>910</b>	<b>-14.0%</b>	<b>87,201</b>	<b>69,425</b>	<b>25.6%</b>
<b>Percentage of All Bus Routes</b>	<b>2.0%</b>	<b>2.4%</b>		<b>1.0%</b>	<b>1.4%</b>		<b>1.1%</b>	<b>1.6%</b>		<b>1.9%</b>	<b>2.2%</b>	

(1) Several express routes were suspended beginning at the end of March 2020, due to the SARS-CoV-2 pandemic, while other routes had alignment and schedule modifications made to them, in an ongoing effort to optimize service delivery..

## YEAR-OVER-YEAR BUS RIDERSHIP BY ROUTE SERVICE TYPE

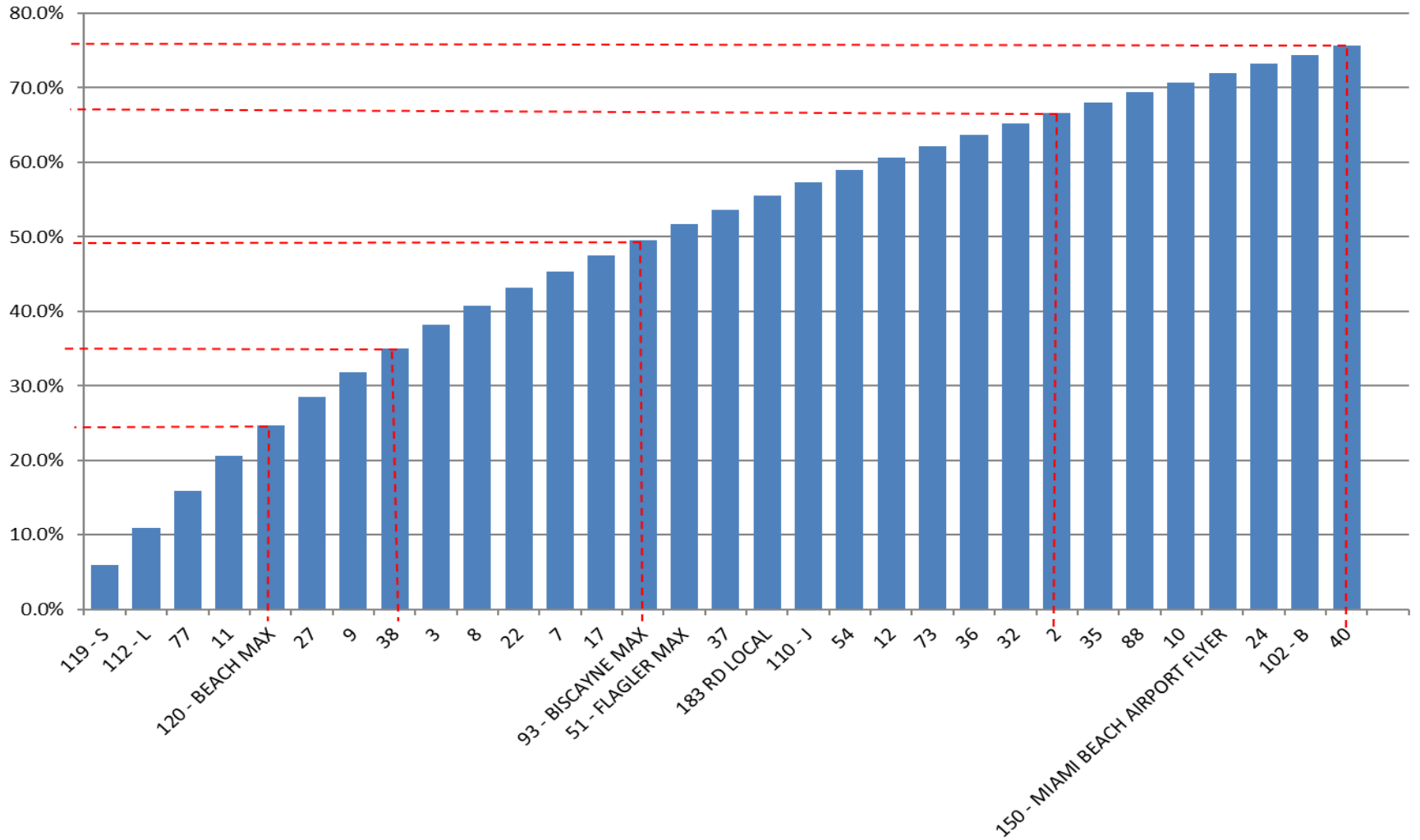
Boardings by Service Type and Route	Average Weekday	Average Weekday	Percent Change	Average Saturday	Average Saturday	Percent Change	Average Sunday	Average Sunday	Percent Change	Total Monthly	Total Monthly	Percent Change
	Dec-22	Dec-21	22 vs 21	Dec-22	Dec-21	22 vs 21	Dec-22	Dec-21	22 vs 21	Dec-22	Dec-21	22 vs 21
<b>Contracted Express Routes</b>												
272 SUNSET-KAT	334	269	24.4%							7,351	6,178	19.0%
301-DADE MONROE EXPRESS	815	755	7.9%	808	658	23.0%	702	679	3.4%	24,779	22,714	9.1%
302-CARD SOUND EXPRESS	100	67	49.0%	87	31	178.4%	89	48	84.4%	2,987	1,859	60.7%
<b>Subtotal Contracted Express Routes</b>	<b>1,249</b>	<b>1,091</b>	<b>14.5%</b>	<b>895</b>	<b>689</b>	<b>30.0%</b>	<b>791</b>	<b>727</b>	<b>8.8%</b>	<b>35,117</b>	<b>30,751</b>	<b>14.2%</b>
<b>Percentage of All Bus Routes</b>	<b>0.7%</b>	<b>1.0%</b>		<b>0.8%</b>	<b>1.0%</b>		<b>1.1%</b>	<b>1.3%</b>		<b>0.8%</b>	<b>1.0%</b>	
<b>Limited Stop Routes</b>												
24-CORAL WAY LIMITED	2,220	1,263	75.9%	1,387	789	76.0%	969	784	23.5%	59,656	35,329	68.9%
51-FLAGLER MAX	3,663	2,345	56.2%							80,587	53,925	49.4%
79 STREET MAX	526	250	110.1%							11,573	5,758	101.0%
93 - BISCAYNE MAX	3,678	2,175	69.1%							80,920	50,016	61.8%
120 - BEACH MAX	6,939	4,989	39.1%	6,256	3,456	81.0%	3,564	2,764	29.0%	198,188	139,614	42.0%
241 TUTTLE LIMITED	231	42	447.0%	131	5	2512.0%	134	21		6,277	449	1298.0%
252-CORAL REEF MAX	911	512	77.8%	379	224	69.1%	313	199	57.2%	23,188	13,477	72.1%
267-LUDLAM LIMITED (contracted)	145	92	57.8%							3,186	2,111	50.9%
277-7TH AVENUE MAX	687	417	64.8%							15,117	9,587	57.7%
287-SAGA BAY MAX	284	175	62.4%							6,253	4,026	55.3%
297-27th AVENUE ORANGE MAX	1,162	772	50.4%							25,562	18,024	41.8%
<b>Subtotal Limited Stop Routes</b>	<b>20,447</b>	<b>13,031</b>	<b>56.9%</b>	<b>8,152</b>	<b>4,473</b>	<b>82.3%</b>	<b>4,980</b>	<b>3,897</b>	<b>27.8%</b>	<b>510,507</b>	<b>332,316</b>	<b>53.6%</b>
<b>Percentage of All Bus Routes</b>	<b>11.7%</b>	<b>11.4%</b>		<b>7.6%</b>	<b>6.7%</b>		<b>6.9%</b>	<b>6.9%</b>		<b>10.9%</b>	<b>10.6%</b>	
<b>Directly Operated Free Routes</b>												
132 -TRI-RAIL DORAL	47	5	819.9%							1,043	67	1456.7%
200-CUTLER BAY LOCAL	123	97	26.1%	93	56	65.7%	72			3,448	2,265	52.2%
<b>Subtotal Free Directly Operated Routes</b>	<b>170</b>	<b>102</b>	<b>66.1%</b>	<b>93</b>	<b>56</b>	<b>65.7%</b>	<b>72</b>			<b>4,491</b>	<b>2,332</b>	<b>92.6%</b>
<b>Percentage of All Bus Routes</b>	<b>0.1%</b>	<b>0.1%</b>		<b>0.1%</b>	<b>0.1%</b>		<b>0.1%</b>			<b>0.1%</b>	<b>0.1%</b>	
<b>Shuttles</b>												
55-MARLINS SHUTTLE												
<b>Percentage of All Bus Routes</b>												
<b>Contractor-Operated Lifeline Routes</b>												
GREEN HILLS SHUTTLE	5	4	26.7%							19	15	26.7%
KINGS CREEK SHUTTLE	13	13	3.1%							66	64	3.1%
SIERRA LAKES SHUTTLE	11	17	-36.0%							55	86	-36.0%
ROBERT SHARP SHUTTLE	36	22	67.8%							145	108	34.3%
AHEPA SHUTTLE	17	21	-21.0%							83	105	-21.0%
FEDERATION GARDENS SHUTTLE				19	24	-18.0%				97	71	36.6%
<b>Subtotal Contractor-Operated Lifeline Routes</b>	<b>82</b>	<b>76</b>	<b>7.1%</b>	<b>19</b>	<b>24</b>	<b>-18.0%</b>				<b>465</b>	<b>449</b>	<b>3.6%</b>
<b>Percentage of All Bus Routes</b>	<b>0.0%</b>	<b>0.1%</b>		<b>0.0%</b>	<b>0.0%</b>					<b>0.0%</b>	<b>0.0%</b>	
<b>All Other (Regular) Routes</b>												
	143,867	93,857	53.3%	94,535	58,747	60.9%	63,464	49,837	27.3%	3,891,611	2,593,038	50.1%
<b>Percentage of All Bus Routes</b>	<b>82.1%</b>	<b>82.0%</b>		<b>88.3%</b>	<b>88.5%</b>		<b>87.6%</b>	<b>87.7%</b>		<b>83.2%</b>	<b>83.0%</b>	
<b>Total Bus System</b>	<b>175,158</b>	<b>114,511</b>	<b>53.0%</b>	<b>107,106</b>	<b>66,354</b>	<b>61.4%</b>	<b>72,484</b>	<b>56,810</b>	<b>27.6%</b>	<b>4,677,460</b>	<b>3,123,883</b>	<b>49.7%</b>

## Bus Routes as Ranked by Percentage of Average Weekday Ridership December 2022

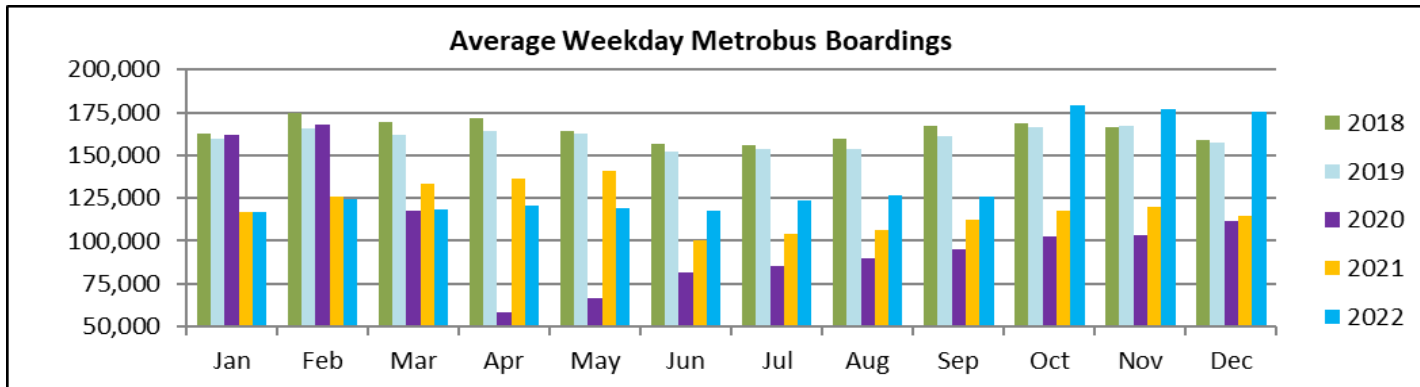
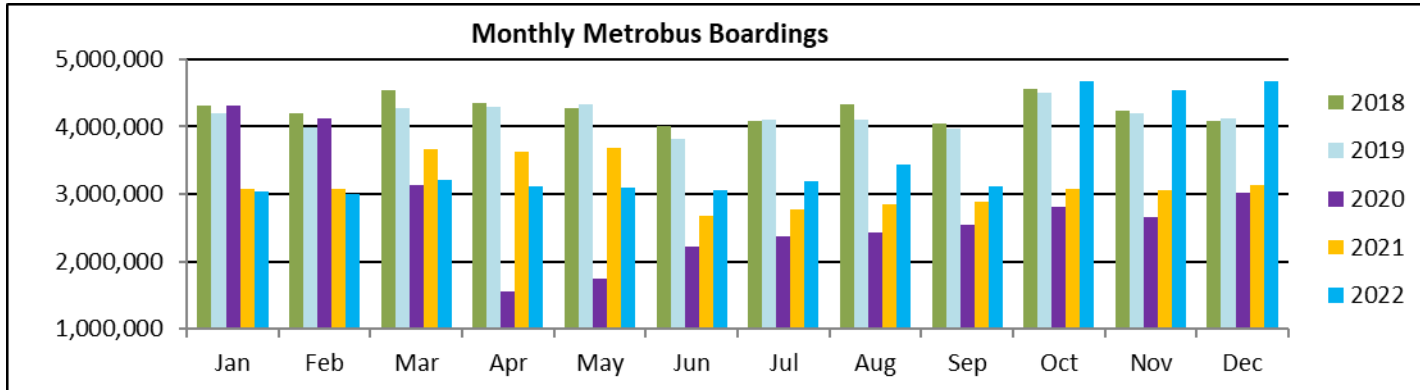
Rank	Route	Average Weekday	Percent Share	Cumul Pct Share	Rank	Route	Average Weekday	Percent Share	Cumul Pct Share	Rank	Route	Average Weekday	Percent Share	Cumul Pct Share
1	119	10,462	6.0%	6.0%	36	33	1,773	1.0%	81.0%	71	241	231	0.1%	98.8%
2	112	8,718	5.0%	11.0%	37	62	1,756	1.0%	82.0%	72	836	218	0.1%	98.9%
3	77	8,688	5.0%	15.9%	38	21	1,712	1.0%	83.0%	73	1	211	0.1%	99.1%
4	11	8,338	4.8%	20.7%	39	207	1,694	1.0%	84.0%	74	136	149	0.1%	99.2%
5	120	6,939	4.0%	24.6%	40	208	1,599	0.9%	84.9%	75	267	145	0.1%	99.2%
6	27	6,704	3.8%	28.5%	41	99	1,577	0.9%	85.8%	76	115	140	0.1%	99.3%
7	9	5,841	3.3%	31.8%	42	105	1,459	0.8%	86.6%	77	248	136	0.1%	99.4%
8	38	5,658	3.2%	35.0%	43	19	1,433	0.8%	87.4%	78	200	123	0.1%	99.5%
9	3	5,629	3.2%	38.2%	44	135	1,355	0.8%	88.2%	79	302	100	0.1%	99.5%
10	8	4,486	2.6%	40.8%	45	75	1,257	0.7%	88.9%	80	211	92	0.1%	99.6%
11	22	4,194	2.4%	43.2%	46	52	1,244	0.7%	89.6%	81	286	86	0.0%	99.6%
12	7	3,780	2.2%	45.4%	47	34	1,234	0.7%	90.3%	82	837	80	0.0%	99.7%
13	17	3,683	2.1%	47.5%	48	297	1,162	0.7%	91.0%	83	500	76	0.0%	99.7%
14	93	3,678	2.1%	49.6%	49	31	1,080	0.6%	91.6%	84	202	76	0.0%	99.8%
15	51	3,663	2.1%	51.6%	50	42	1,024	0.6%	92.2%	85	246	57	0.0%	99.8%
16	37	3,511	2.0%	53.6%	51	95	934	0.5%	92.7%	86	82	54	0.0%	99.8%
17	183	3,318	1.9%	55.5%	52	252	911	0.5%	93.2%	87	217	52	0.0%	99.8%
18	110	3,069	1.8%	57.3%	53	301	815	0.5%	93.7%	88	344	50	0.0%	99.9%
19	54	2,963	1.7%	59.0%	54	104	778	0.4%	94.1%	89	132	47	0.0%	99.9%
20	12	2,817	1.6%	60.6%	55	113	731	0.4%	94.6%	90	155	38	0.0%	99.9%
21	73	2,785	1.6%	62.2%	56	108	728	0.4%	95.0%	91	RS	36	0.0%	99.9%
22	36	2,648	1.5%	63.7%	57	277	687	0.4%	95.4%	92	46	21	0.0%	100.0%
23	32	2,559	1.5%	65.2%	58	71	641	0.4%	95.7%	93	212	21	0.0%	100.0%
24	2	2,520	1.4%	66.6%	59	238	617	0.4%	96.1%	94	AS	17	0.0%	100.0%
25	35	2,492	1.4%	68.0%	60	204	593	0.3%	96.4%	95	KC	13	0.0%	100.0%
26	88	2,359	1.3%	69.4%	61	72	577	0.3%	96.8%	96	SL	11	0.0%	100.0%
27	10	2,274	1.3%	70.7%	62	79	526	0.3%	97.1%	97	254	6	0.0%	100.0%
28	150	2,245	1.3%	71.9%	63	29	460	0.3%	97.3%	98	GH	5	0.0%	100.0%
29	24	2,220	1.3%	73.2%	64	57	460	0.3%	97.6%					
30	102	2,110	1.2%	74.4%	65	288	457	0.3%	97.8%					
31	40	2,084	1.2%	75.6%	66	272	334	0.2%	98.0%					
32	137	2,003	1.1%	76.8%	67	56	324	0.2%	98.2%					
33	16	1,974	1.1%	77.9%	68	287	284	0.2%	98.4%					
34	107	1,859	1.1%	78.9%	69	210	281	0.2%	98.5%					
35	87	1,842	1.1%	80.0%	70	101	260	0.1%	98.7%					
											<b>Total Boardings</b>	<b>175,158</b>	<b>100.0%</b>	<b>100.0%</b>

- (1) Average weekday ridership rounded to the nearest unit.  
(2) Includes the five Lifeline Shuttles that operate on weekdays: Ahepa, Green Hills, Kings Creek, Robert Sharp and Sierra Lakes.

**Bus - Cumulative Percentage Average Weekday Ridership Share  
Top 1/4, 1/3, 1/2, 2/3 and 3/4 of Routes**



## TOTAL MONTHLY AND AVERAGE WEEKDAY RIDERSHIP YEAR OVER YEAR COMPARISON CHARTS – METROBUS



**“TOP 5 / BOTTOM 5” BUS ROUTES AVERAGE WEEKDAY RIDERSHIP PERFORMANCE  
YEAR OVER YEAR COMPARISONS**

Route	Dec-22	Dec-21	AbsolutePercent Delta	
			Delta (1)	(2)
<b>119 - S</b>	10,462	7,017	3,445	49.1%
<b>77</b>	8,688	5,576	3,111	55.8%
<b>112 - L</b>	8,718	6,091	2,627	43.1%
<b>11</b>	8,338	5,823	2,515	43.2%
<b>3</b>	5,629	3,487	2,142	61.4%
<b>202 - LITTLE HAITI CONN. (*)</b>	76	109	-33	-30.4%
<b>210 - SKYLAKE CIRC (*)</b>	281	299	-18	-6.0%
<b>115 (*)</b>	140	145	-5	-3.7%
<b>212 - SWEETWATER CIRC. (*)</b>	21	25	-5	-18.2%
<b>217 - BUNCHE PARK CIRC (*)</b>	52	56	-4	-7.4%

- (1) Averages rounded to the nearest boarding, data as reported by NFS and/or APC system, depending on year; Lifelines excluded.
- (2) As a result of the SARS-CoV-2 pandemic, rides were fare-free beginning March 22, 2020; many bus routes continued reporting YOY gains in December 2022, since December 2021 still showed clear reduction effects on ridership from the SARS-CoV-2 pandemic. Fares were reinstated June 1, 2021, and ridership data from the farebox system rather than the APC system is utilized from that date thru the end of September 2022. Beginning October 1, 2022, ridership is again reported from the APC system coupled with a new enhanced sensor system.
- (\*) Contracted route.

## METROBUS PARKING PATRONAGE SUMMARY

### December 2022

PARK-RIDE LOT	ACTUAL AVAILABLE SPACES	ACTUAL OCCUPANCY	PERCENT OCCUPANCY
Transitway / SW 152nd St	200	128	64%
Transitway / SW 168th St	149	0	0%
Transitway / SW 200th Street (effective February 2020)	100	24	24%
Transitway / SW 112 Ave (Target)	450	156	35%
Transitway / SW 244th St	95	50	53%
Transitway / SW 296th St	139	16	12%
Transitway / SW 344th St	248	160	65%
Coral Reef Drive 117/ Turnpike	95	91	96%
Golden Glades Facility	2,150	327	15%
Hammocks Town Center (SW 152 Ave / SW 104 St)	50	20	40%
Kendall Dr./SW 127th Ave	161	13	8%
West Kendall Transit Term (Kendall Dr / SW162 Ave)	40	11	28%
NW 7th Avenue Transit Village (NW 7 Ave / NW 62 St)	25	19	76%
Miami Gardens Dr. / NW 73rd Ave	136	0	0%
Dolphin Station (effective Mar 2020)	348	79	23%
Tamiami Station (eff 11-2022)			
I-75 / Miami Gardens Dr	298	0	0%
<b>TOTAL</b>	<b>4,684</b>	<b>1,094</b>	<b>23%</b>

(\*) Closed for construction beginning January 2022

(\*\*) Route 175 Suspended 3/27/2020

# Metrorail



December 2022



## METRORAIL AVERAGE WEEKDAY BOARDINGS BY STATION (†)

<b>Weekdays</b>	<b>Average Weekday</b>	<b>Average Weekday</b>	<b>Percent Change</b>	<b>Average Weekday</b>	<b>Percent Change</b>	<b>Average Weekday</b>	<b>Percent Change</b>	<b>Average Weekday</b>	<b>Percent Change</b>
<b>STATIONS</b>	<b>Dec-22</b>	<b>Dec-21</b>	<b>YOY</b>	<b>Feb-20</b>	<b>Current vs Feb-20</b>	<b>Nov-22</b>	<b>MOM</b>	<b>Dec-20</b>	<b>YO2Y</b>
ALLAPATTAH	1,544	1,142	35.1%	1,942	-20.5%	1,560	-1.1%	1,209	27.7%
BRICKELL	4,525	3,386	33.6%	6,529	-30.7%	4,401	2.8%	3,451	31.1%
BROWNSVILLE	684	569	20.3%	862	-20.6%	680	0.7%	691	-0.9%
CIVIC CENTER	3,404	2,759	23.4%	6,143	-44.6%	3,696	-7.9%	2,259	50.7%
COCONUT GROVE	1,317	1,075	22.5%	1,795	-26.7%	1,332	-1.2%	919	43.2%
CULMER	910	776	17.3%	1,392	-34.6%	887	2.6%	842	8.1%
DADELAND NORTH	3,433	2,807	22.3%	5,926	-42.1%	3,563	-3.6%	2,518	36.3%
DADELAND SOUTH	4,032	3,208	25.7%	7,150	-43.6%	4,132	-2.4%	2,790	44.5%
DOUGLAS ROAD	2,589	2,132	21.4%	3,624	-28.6%	2,797	-7.4%	1,703	52.0%
DR. MARTIN LUTHER KING, JR.	799	703	13.7%	1,157	-30.9%	797	0.2%	766	4.3%
EARLINGTON HEIGHTS	1,243	961	29.4%	1,662	-25.2%	1,241	0.2%	939	32.3%
GOVERNMENT CENTER	5,758	4,723	21.9%	10,557	-45.5%	6,274	-8.2%	3,150	82.8%
HIALEAH	1,088	809	34.5%	1,253	-13.1%	1,039	4.7%	695	56.6%
MIAMI INTERNATIONAL AIRPORT	1,269	947	34.0%	1,711	-25.8%	1,204	5.5%	663	91.4%
NORTHSIDE	1,181	957	23.4%	1,476	-20.0%	1,206	-2.1%	919	28.4%
OKEECHOBEE	811	613	32.4%	1,164	-30.3%	743	9.1%	600	35.1%
OVERTOWN / ARENA	1,118	981	14.0%	2,274	-50.8%	1,142	-2.1%	707	58.2%
PALMETTO	1,107	804	37.7%	1,543	-28.3%	1,136	-2.6%	708	56.3%
SANTA CLARA	604	466	29.6%	812	-25.5%	605	0.0%	482	25.4%
SOUTH MIAMI	1,777	1,480	20.1%	3,015	-41.1%	1,870	-5.0%	1,238	43.6%
TRI-RAIL	1,014	739	37.3%	1,207	-16.0%	1,014	0.0%	706	43.8%
UNIVERSITY	1,331	944	40.9%	2,784	-52.2%	1,875	-29.0%	453	193.7%
VIZCAYA	1,044	842	24.0%	1,390	-24.9%	1,044	-0.1%	690	51.3%
<b>TOTAL</b>	<b>42,582</b>	<b>33,822</b>	<b>25.9%</b>	<b>67,367</b>	<b>-36.8%</b>	<b>44,238</b>	<b>-3.7%</b>	<b>29,097</b>	<b>46.3%</b>

(†) In this table and those which follow, "YOY" stands for "year-over-year", "MOM" for "month-over-month" and "YO2Y" for "year over two years", i.e., current month vs 12 months prior, one month prior and 24 months prior, respectively.

(\*) Due to effects from the SARS-CoV-2 pandemic; rides were fare-free beginning March 22, 2020; fares were reinstated on June 1, 2021, in part accounting for the drop in ridership from May 2021.

## METRORAIL AVERAGE SATURDAY BOARDINGS BY STATION

<b>Saturdays</b>	Average Saturday	Average Saturday	Percent Change	Average Saturday	Percent Change	Average Saturday	Percent Change	Average Saturday	Percent Change
STATIONS	Dec-22	Dec-21	YOY	Feb-20	Current vs Feb-20	Nov-22	MOM	Dec-20	YO2Y
ALLAPATTAH	903	631	43.1%	1,051	-14.1%	936	-3.6%	807	11.9%
BRICKELL	2,277	1,780	27.9%	2,811	-19.0%	2,218	2.7%	2,188	4.1%
BROWNSVILLE	409	330	24.0%	520	-21.4%	433	-5.6%	631	-35.2%
CIVIC CENTER	635	521	22.0%	959	-33.8%	653	-2.7%	626	1.6%
COCONUT GROVE	691	567	21.7%	928	-25.6%	716	-3.5%	603	14.5%
CULMER	421	372	13.1%	721	-41.5%	437	-3.6%	538	-21.6%
DADELAND NORTH	1,324	1,131	17.0%	1,994	-33.6%	1,357	-2.4%	1,506	-12.1%
DADELAND SOUTH	1,781	1,414	26.0%	2,625	-32.2%	1,871	-4.8%	1,837	-3.0%
DOUGLAS ROAD	1,083	894	21.2%	1,319	-17.9%	1,187	-8.8%	961	12.7%
DR. MARTIN LUTHER KING, JR.	440	373	18.0%	625	-29.6%	474	-7.1%	526	-16.4%
EARLINGTON HEIGHTS	705	562	25.6%	935	-24.6%	725	-2.7%	635	11.0%
GOVERNMENT CENTER	2,905	2,177	33.4%	4,262	-31.8%	2,853	1.8%	1,942	49.6%
HIALEAH	521	411	26.7%	583	-10.7%	531	-1.9%	431	20.8%
MIAMI INTERNATIONAL AIRPORT	988	769	28.5%	1,330	-25.7%	1,043	-5.3%	613	61.3%
NORTHSIDE	736	587	25.5%	878	-16.2%	759	-3.0%	705	4.4%
OKEECHOBEE	283	269	5.2%	408	-30.7%	295	-3.9%	316	-10.3%
OVERTOWN / ARENA	385	392	-1.9%	678	-43.3%	442	-13.0%	451	-14.7%
PALMETTO	349	250	39.6%	458	-23.8%	391	-10.8%	319	9.6%
SANTA CLARA	314	236	33.0%	422	-25.7%	317	-1.1%	328	-4.5%
SOUTH MIAMI	853	710	20.0%	1,256	-32.1%	924	-7.7%	746	14.3%
TRI-RAIL	451	311	45.0%	614	-26.5%	517	-12.7%	453	-0.3%
UNIVERSITY	450	358	25.9%	714	-36.9%	572	-21.3%	233	93.0%
VIZCAYA	493	396	24.6%	622	-20.7%	494	-0.1%	434	13.5%
<b>TOTAL</b>	<b>19,394</b>	<b>15,438</b>	<b>25.6%</b>	<b>26,714</b>	<b>-27.4%</b>	<b>20,141</b>	<b>-3.7%</b>	<b>17,825</b>	<b>8.8%</b>

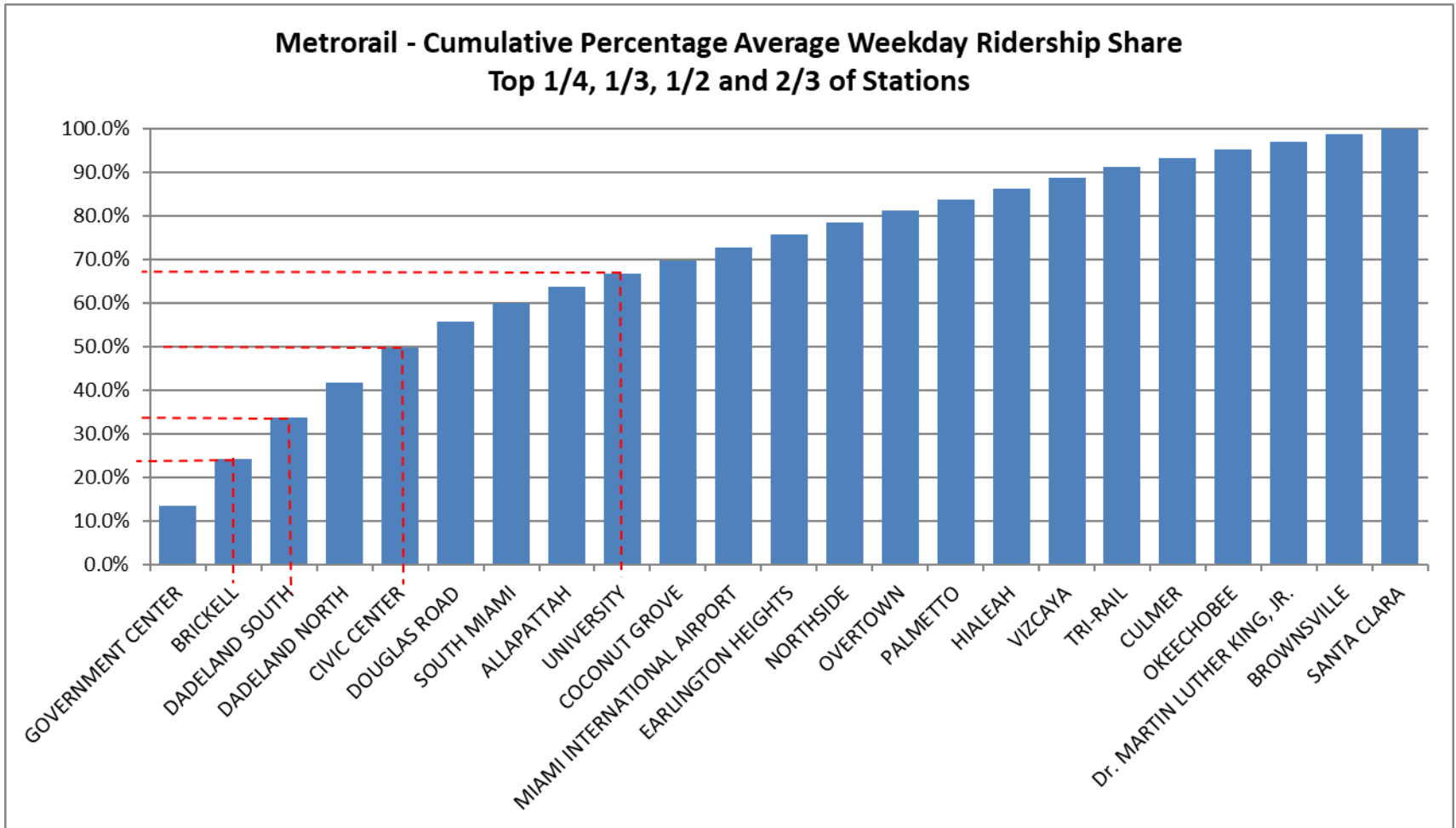
## METRORAIL AVERAGE SUNDAY BOARDINGS BY STATION

<b>Sundays</b>	<b>Average Sunday</b>	<b>Average Sunday</b>	<b>Percent Change</b>	<b>Average Sunday</b>	<b>Percent Change</b>	<b>Average Sunday</b>	<b>Percent Change</b>	<b>Average Sunday</b>	<b>Percent Change</b>
<b>STATIONS</b>	<b>Dec-22</b>	<b>Dec-21</b>	<b>YOY</b>	<b>Feb-20</b>	<b>Current vs Feb-20</b>	<b>Nov-22</b>	<b>MOM</b>	<b>Dec-20</b>	<b>YO2Y</b>
ALLAPATTAH	579	517	11.9%	791	-26.8%	632	-8.5%	611	-5.2%
BRICKELL	1,627	1,632	-0.3%	2,379	-31.6%	1,648	-1.3%	1,662	-2.1%
BROWNSVILLE	288	262	10.2%	406	-29.0%	324	-11.0%	443	-34.9%
CIVIC CENTER	497	433	14.9%	791	-37.1%	522	-4.8%	569	-12.6%
COCONUT GROVE	467	514	-9.1%	838	-44.3%	490	-4.6%	454	3.0%
CULMER	307	337	-9.0%	616	-50.2%	324	-5.3%	447	-31.4%
DADELAND NORTH	905	981	-7.7%	1,685	-46.3%	968	-6.5%	1,173	-22.8%
DADELAND SOUTH	1,229	1,221	0.7%	2,210	-44.4%	1,359	-9.6%	1,286	-4.4%
DOUGLAS ROAD	773	732	5.6%	1,090	-29.0%	793	-2.5%	677	14.2%
DR. MARTIN LUTHER KING, JR.	342	311	10.0%	506	-32.4%	351	-2.5%	346	-1.1%
EARLINGTON HEIGHTS	490	458	7.1%	799	-38.7%	504	-2.7%	509	-3.8%
GOVERNMENT CENTER	1,908	1,884	1.3%	4,044	-52.8%	2,010	-5.1%	1,412	35.1%
HIALEAH	372	304	22.3%	472	-21.2%	391	-4.8%	286	30.1%
MIAMI INTERNATIONAL AIRPORT	879	820	7.3%	1,343	-34.5%	1,055	-16.7%	534	64.6%
NORTHSIDE	515	478	7.6%	653	-21.1%	544	-5.3%	543	-5.2%
OKEECHOBEE	175	178	-1.4%	273	-36.0%	162	8.0%	221	-20.6%
OVERTOWN / ARENA	272	372	-26.9%	544	-50.1%	325	-16.4%	402	-32.3%
PALMETTO	205	181	13.1%	336	-39.0%	203	1.0%	190	7.9%
SANTA CLARA	209	176	18.6%	280	-25.2%	213	-1.8%	208	0.5%
SOUTH MIAMI	587	591	-0.7%	987	-40.5%	617	-4.9%	527	11.4%
TRI-RAIL	311	329	-5.6%	528	-41.1%	366	-15.2%	309	0.6%
UNIVERSITY	346	262	32.4%	608	-43.1%	436	-20.5%	160	116.1%
VIZCAYA	334	331	0.8%	524	-36.3%	348	-4.2%	316	5.5%
<b>TOTAL</b>	<b>13,615</b>	<b>13,301</b>	<b>2.4%</b>	<b>22,701</b>	<b>-40.0%</b>	<b>14,583</b>	<b>-6.6%</b>	<b>13,282</b>	<b>2.5%</b>

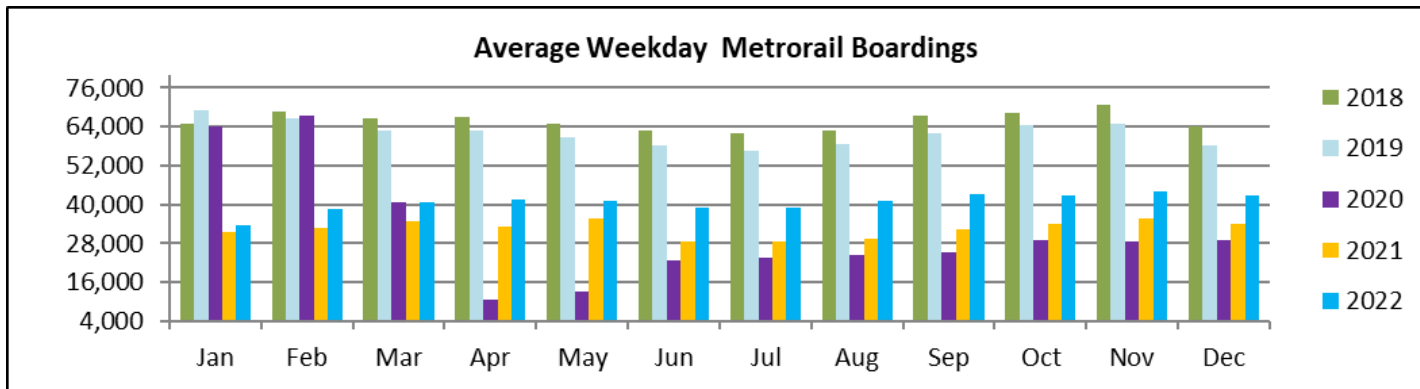
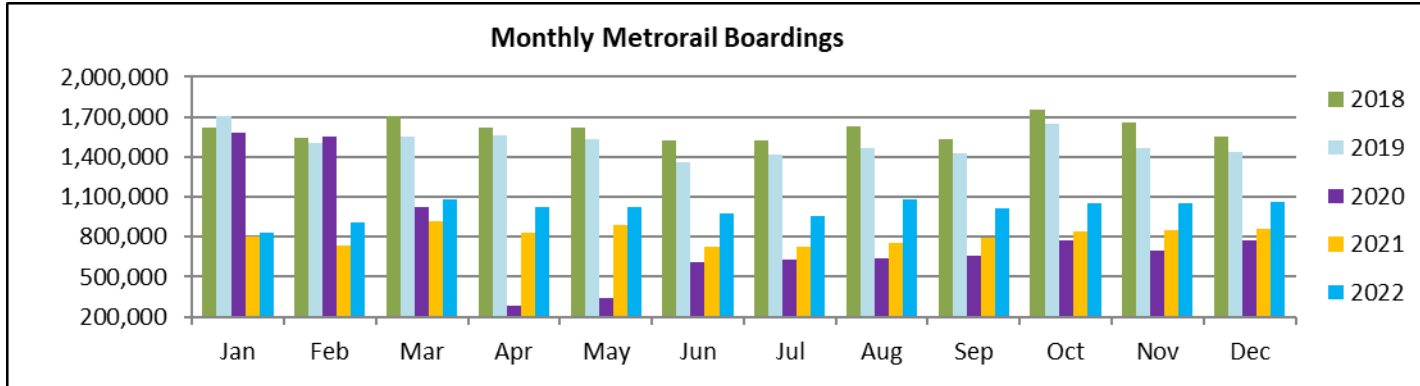
## METRORAIL TOTAL MONTHLY BOARDINGS BY STATION

<b>Monthly Totals</b>	Total Month	Total Month	Percent Change	Total Month	Percent Change	Total Month	Percent Change	Total Month	Percent Change
<b>STATIONS</b>	Dec-22	Dec-21	YOY	Feb-20	Current vs Feb-20	Nov-22	MOM	Dec-20	YO2Y
ALLAPATTAH	39,994	30,100	32.9%	46,868	-14.7%	39,131	2.2%	32,773	22.0%
BRICKELL	115,008	88,801	29.5%	152,259	-24.5%	107,419	7.1%	92,403	24.5%
BROWNSVILLE	17,853	15,100	18.2%	21,285	-16.1%	17,335	3.0%	19,891	-10.2%
CIVIC CENTER	77,321	63,100	22.5%	128,921	-40.0%	79,480	-2.7%	54,909	40.8%
COCONUT GROVE	33,558	28,268	18.7%	43,580	-23.0%	32,770	2.4%	24,769	35.5%
CULMER	22,832	20,093	13.6%	33,497	-31.8%	21,620	5.6%	22,873	-0.2%
DADELAND NORTH	83,629	69,887	19.7%	132,894	-37.1%	82,540	1.3%	66,604	25.6%
DADELAND SOUTH	100,175	81,067	23.6%	162,416	-38.3%	98,644	1.6%	75,086	33.4%
DOUGLAS ROAD	63,911	53,340	19.8%	82,141	-22.2%	65,470	-2.4%	44,637	43.2%
DR. MARTIN LUTHER KING, JR.	20,738	18,364	12.9%	27,980	-25.9%	20,016	3.6%	14,113	46.9%
EARLINGTON HEIGHTS	32,151	25,546	25.9%	40,697	-21.0%	30,965	3.8%	25,671	25.2%
GOVERNMENT CENTER	145,455	120,733	20.5%	243,414	-40.2%	148,583	-2.1%	84,191	72.8%
HIALEAH	27,418	20,762	32.1%	29,516	-7.1%	25,444	7.8%	18,393	49.1%
MIAMI INTERNATIONAL AIRPORT	36,132	27,971	29.2%	46,115	-21.6%	34,532	4.6%	19,721	83.2%
NORTHSIDE	31,039	25,735	20.6%	36,127	-14.1%	30,694	1.1%	26,082	19.0%
OKEECHOBEE	19,471	15,223	27.9%	26,026	-25.2%	17,310	12.5%	15,547	25.2%
OVERTOWN / ARENA	26,861	24,503	9.6%	49,911	-46.2%	25,981	3.4%	19,164	40.2%
PALMETTO	26,207	19,125	37.0%	33,944	-22.8%	25,699	2.0%	17,795	47.3%
SANTA CLARA	15,386	11,979	28.4%	19,245	-20.1%	14,759	4.2%	12,928	19.0%
SOUTH MIAMI	44,694	37,715	18.5%	69,412	-35.6%	44,898	-0.5%	32,757	36.4%
TRI-RAIL	25,259	18,711	35.0%	29,120	-13.3%	24,516	3.0%	18,822	34.2%
UNIVERSITY	31,891	22,889	39.3%	61,253	-47.9%	42,229	-24.5%	11,679	173.1%
VIZCAYA	26,113	21,424	21.9%	32,497	-19.6%	25,031	4.3%	18,386	42.0%
<b>TOTAL</b>	<b>1,063,096</b>	<b>860,436</b>	<b>23.6%</b>	<b>1,549,118</b>	<b>-31.4%</b>	<b>1,055,066</b>	<b>0.8%</b>	<b>769,194</b>	<b>38.2%</b>

# METRORAIL CUMULATIVE PERCENTAGE RIDERSHIP SHARE



# TOTAL MONTHLY AND AVERAGE WEEKDAY RIDERSHIP YEAR OVER YEAR COMPARISON CHARTS – METRORAIL



**“TOP 5 / BOTTOM 5” RAIL STATIONS AVERAGE WEEKDAY RIDERSHIP PERFORMANCE  
YEAR OVER YEAR COMPARISONS**

<b>Station</b>	<b>Dec-22</b>	<b>Dec-21</b>	<b>Absolute Delta (1)</b>	<b>Percent Delta</b>
BRICKELL	4,525	3,386	1,139	33.6%
GOVERNMENT CENTER	5,758	4,723	1,034	21.9%
DADELAND SOUTH	4,032	3,208	824	25.7%
CIVIC CENTER	3,404	2,759	645	23.4%
DADELAND NORTH	3,433	2,807	626	22.3%
Dr. MARTIN LUTHER KING, JR.	799	703	96	13.7%
BROWNSVILLE	684	569	116	20.3%
CULMER	910	776	135	17.3%
OVERTOWN	1,118	981	137	14.0%
SANTA CLARA	604	466	138	29.6%

- (1) Averages rounded to the nearest boarding; all stations reported net gains over pandemic month December 2021.
- (2) As a result of the SARS-CoV-2 pandemic, rides were fare-free beginning March 22, 2020; all rail stations continued reporting YOY gains in December 2022 as December 2021 still showed clear reduction effects on ridership from the SARS-CoV-2 pandemic. Fares were reinstated June 1, 2021, and ridership data from the faregate system rather than the video camera counter system is utilized from that date going forward.

## METRORAIL PARKING PATRONAGE SUMMARY December 2022

PARK-RIDE LOT	ACTUAL CAPACITY (1)	ACTUAL OCCUPANCY (2)	PERCENT OCCUPANCY
DADELAND SOUTH	1,260	750	60%
DADELAND NORTH	1,963	760	39%
SOUTH MIAMI	1,081	241	22%
UNIVERSITY	260	136	52%
DOUGLAS ROAD	222	142	64%
COCONUT GROVE	100	39	39%
VIZCAYA	120	40	33%
CULMER	40	10	24%
SANTA CLARA	61	48	79%
ALLAPATTAH	74	7	10%
EARLINGTON HEIGHTS	361	128	35%
BROWNSVILLE	100	71	71%
DR. MARTIN LUTHER KING JR. (MDT)	62	0	0%
DR. MARTIN LUTHER KING JR. (GARAGE)	631	0	0%
NORTHSIDE	197	69	35%
HIALEAH	338	41	12%
OKEECHOBEE	1,398	132	9%
PALMETTO	700	142	20%
<b>TOTAL</b>	<b>8,968</b>	<b>2,755</b>	<b>31%</b>

- (1) Number of spaces could vary each week; shown are available spaces during final week of month, as submitted by DTPW Safety & Security office.
- (2) All sampled occupancy data provided by DTPW Safety & Security office; calculations are revisions to those submitted by that entity.
- (3) Daily averages rounded to nearest unit, with fewer counts at some stations due to shortage of DTPW Safety & Security office staff; calculations are based on sampled counted days only per raw data submitted, with resulting average daily occupancy shown.
- (\*) Closed throughout the month, per the DTPW Safety & Security office.



# Metromover



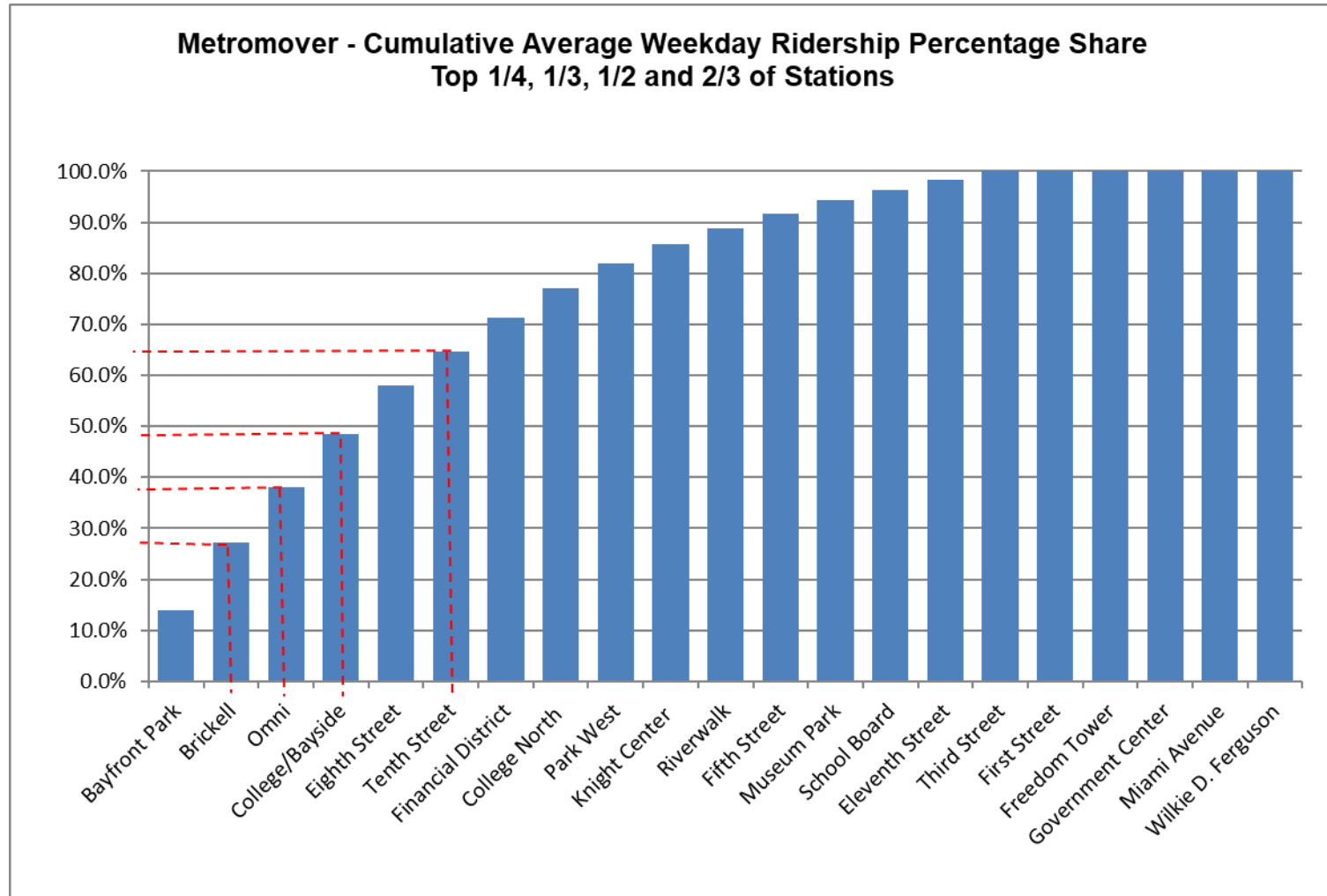
## METROMOVER MONTHLY AND AVERAGE DAILY BOARDINGS BY STATION

	Average Weekday	Average Weekday	Percent Change	Average Saturday	Average Saturday	Percent Change	Average Sunday	Average Sunday	Percent Change	Total Monthly	Total Monthly	Percent Change
STATIONS	Dec-22	Dec-21	22 vs 21	Dec-22	Dec-21	22 vs 21	Dec-22	Dec-21	22 vs 21	Dec-22	Dec-21	22 vs 21
School Board	310	750	-58.6%	305	641	-52.5%	206	554	-62.8%	9,100	21,990	-58.6%
Omni	1,605	1,576	1.8%	1,391	1,395	-0.3%	1,107	1,220	-9.3%	46,240	46,088	0.3%
Museum Park	381	288	32.5%	371	307	20.9%	339	313	8.3%	11,988	9,097	31.8%
Eleventh Street	303	266	14.2%	301	179	68.0%	194	170	14.3%	8,985	7,331	22.6%
Park West	740	363	103.6%	571	402	42.0%	393	252	55.9%	20,910	10,599	97.3%
Freedom Tower												
Government Center		2,178			1,580			1,418			61,449	
Miami Avenue		267			213			171			4,540	
Third Street	240	283	-15.2%	187	201	-6.8%	222	189	17.6%	7,100	7,972	-10.9%
Knight Center	541	411	31.7%	360	242	48.4%	286	226	26.5%	14,702	11,107	32.4%
Bayfront Park	2,071	1,683	23.0%	2,326	1,436	62.0%	1,295	1,352	-4.2%	61,826	49,754	24.3%
First Street		743			703			615			18,976	
College/Bayside	1,541	1,037	48.7%	1,307	940	39.1%	1,124	917	22.5%	44,795	14,785	203.0%
College North	864	556	55.5%	599	365	64.2%	459	318	44.4%	23,662	15,173	55.9%
Wilkie D. Ferguson		837			620			564			23,618	
Riverwalk	477	374	27.5%	355	302	17.5%	271	290	-6.5%	13,416	10,479	28.0%
Fifth Street	428	360	19.1%	354	280	26.5%	307	214	43.1%	12,408	10,112	22.7%
Eighth Street	1,437	1,436	0.1%	1,316	1,178	11.8%	788	1,071	-26.4%	41,372	41,622	-0.6%
Tenth Street	993	614	61.8%	766	477	60.7%	609	454	34.1%	27,906	17,767	57.1%
Brickell	1,995	1,894	5.3%	1,624	1,471	10.5%	1,215	1,385	-12.2%	56,269	54,508	3.2%
Financial District	962	659	46.0%	586	419	40.0%	431	409	5.2%	25,394	13,353	90.2%
<b>TOTAL</b>	<b>14,889</b>	<b>16,572</b>	<b>-10.2%</b>	<b>12,720</b>	<b>13,350</b>	<b>-4.7%</b>	<b>9,244</b>	<b>12,100</b>	<b>-23.6%</b>	<b>426,073</b>	<b>450,320</b>	<b>-5.4%</b>

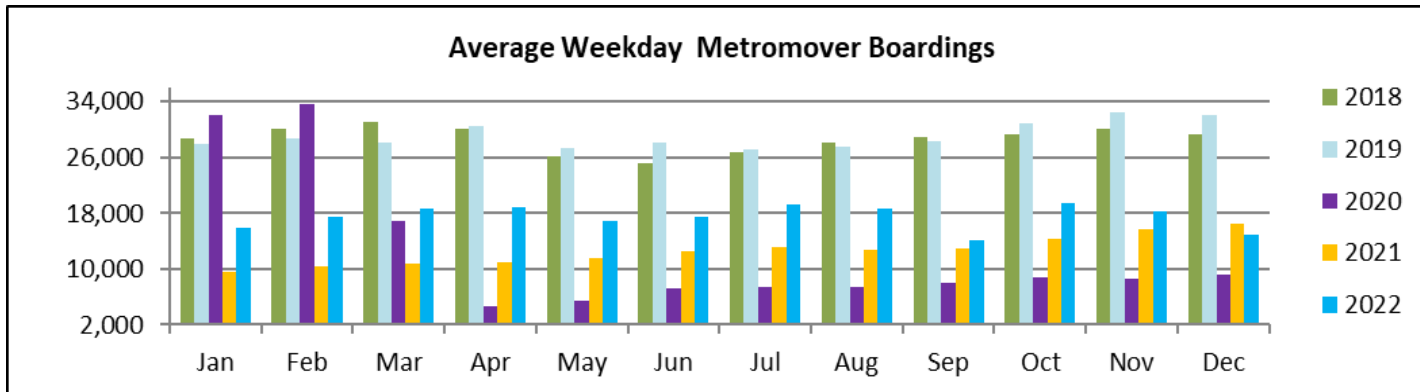
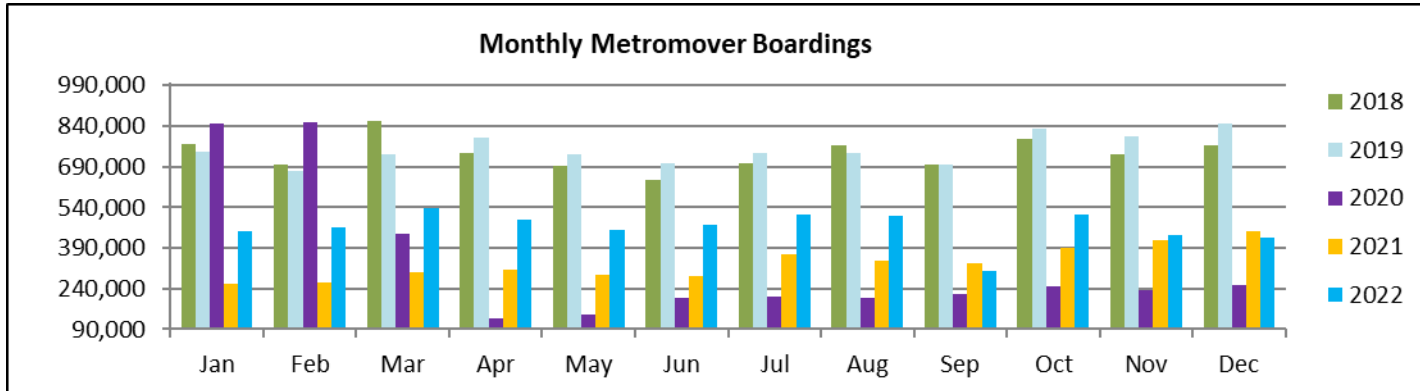
(1) Freedom Tower Station was closed for construction.

(2) Government Center, Miami Avenue, First Street and Wilkie D. Ferguson stations had no ridership data in Dec-22, due to the installation of new enhanced automatic passenger counter system.

## METROMOVER CUMULATIVE PERCENTAGE RIDERSHIP SHARE



## TOTAL MONTHLY AND AVERAGE WEEKDAY RIDERSHIP YEAR OVER YEAR COMPARISON CHARTS – METROMOVER



**“TOP 5 / BOTTOM 5” MOVER STATIONS AVERAGE WEEKDAY RIDERSHIP PERFORMANCE  
YEAR OVER YEAR COMPARISONS**

<b>Station</b>	<b>Dec-22</b>	<b>Dec-21</b>	<b>Absolute Delta (1)</b>	<b>Percent Delta</b>
College/Bayside	1,541	1,037	505	48.7%
Bayfront Park	2,071	1,683	388	23.0%
Tenth Street	993	614	379	61.8%
Park West	740	363	376	103.6%
College North	864	556	308	55.5%
School Board	310	750	-440	-58.6%
Third Street	240	283	-43	-15.2%
Eighth Street	1,437	1,436	1	0.1%
Omni	1,605	1,576	29	1.8%
Eleventh Street	303	266	38	14.2%

(1) Averages rounded to the nearest boarding.

## Special Transportation Services

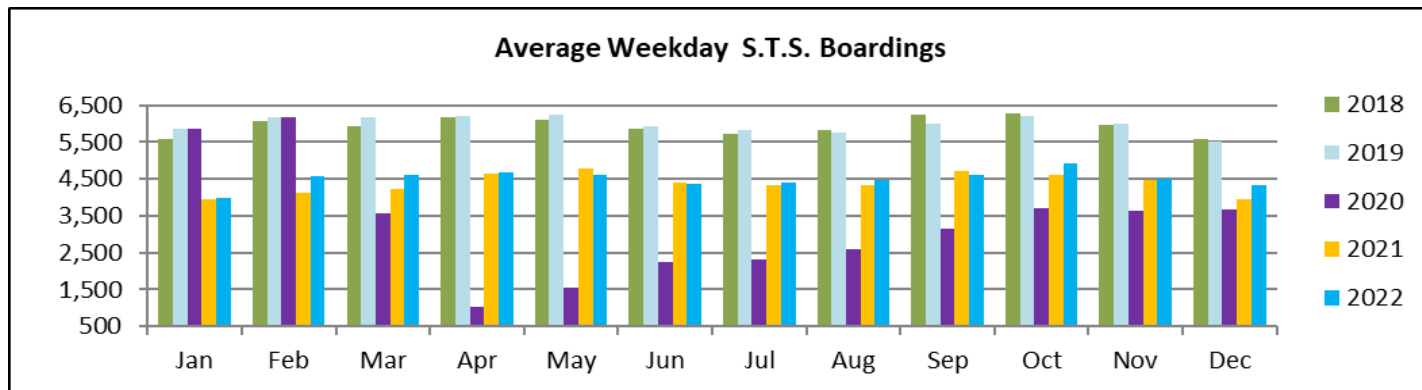
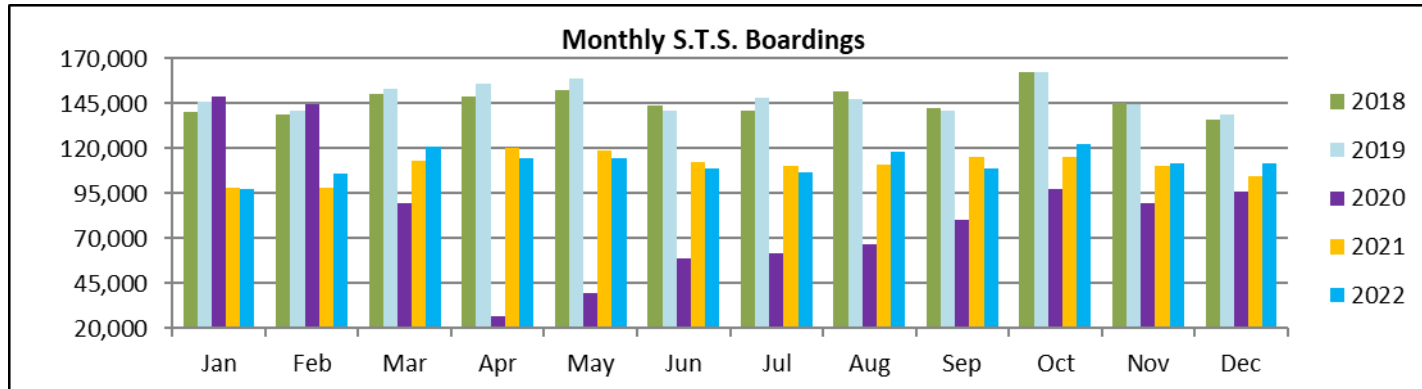


**STS MONTHLY AND AVERAGE DAILY BOARDINGS**  
**December 2022**

Measure	timeline	Ambulatory	Wheelchair	Total Clients (*)
<b>Average Weekday</b>	Dec-22	3,558	776	<b>4,334</b>
<b>Average Saturday</b>	Dec-22	1,680	383	<b>2,064</b>
<b>Average Sunday</b>	Dec-22	1,276	312	<b>1,588</b>
<b>Total Monthly</b>	<b>Dec-22</b>	<b>91,773</b>	<b>20,246</b>	<b>112,019</b>
<b>Average Weekday</b>	Dec-21	3,229	725	<b>3,955</b>
<b>Average Saturday</b>	Dec-21	1,443	382	<b>1,825</b>
<b>Average Sunday</b>	Dec-21	1,263	298	<b>1,560</b>
<b>Total Monthly</b>	<b>Dec-21</b>	<b>85,094</b>	<b>19,402</b>	<b>104,496</b>
<b>Average Weekday</b>	Dec-20	3,003	671	<b>3,673</b>
<b>Average Saturday</b>	Dec-20	1,665	394	<b>2,059</b>
<b>Average Sunday</b>	Dec-20	1,231	232	<b>1,463</b>
<b>Total Monthly</b>	<b>Dec-20</b>	<b>78,881</b>	<b>17,485</b>	<b>96,366</b>
<b>% Change Current vs. Dec 2021 Weekday</b>		10.2%	7.0%	9.6%
<b>% Change Current vs. Dec 2021 Saturday</b>		16.5%	0.4%	13.1%
<b>% Change Current vs. Dec 2021 Sunday</b>		1.1%	4.9%	1.8%
<b>% Change Current vs. Dec 2021 Month Total</b>		<b>7.8%</b>	<b>4.4%</b>	<b>7.2%</b>
<b>% Change Current vs. Dec 2020 Weekday</b>		18.5%	15.8%	18.0%
<b>% Change Current vs. Dec 2020 Saturday</b>		0.9%	-2.7%	0.2%
<b>% Change Current vs. Dec 2020 Sunday</b>		3.7%	34.8%	8.6%
<b>% Change Current vs. Dec 2020 Month Total</b>		<b>16.3%</b>	<b>15.8%</b>	<b>16.2%</b>

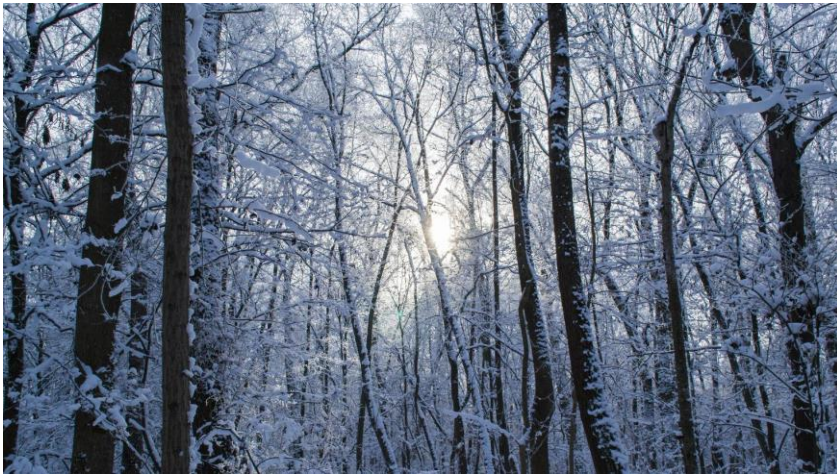
(\*) Trip count data provided by STS contractor.

## TOTAL MONTHLY AND AVERAGE WEEKDAY RIDERSHIP YEAR OVER YEAR COMPARISON CHARTS – SPECIAL TRANSPORTATION SERVICES (S.T.S.)

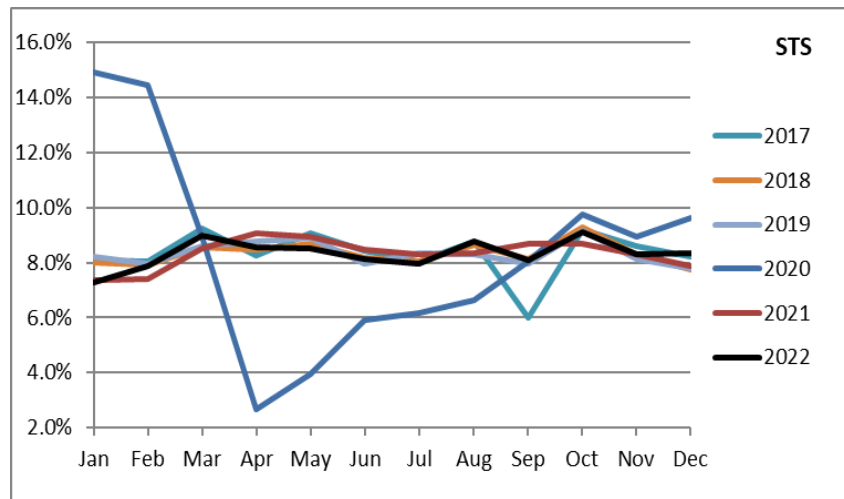
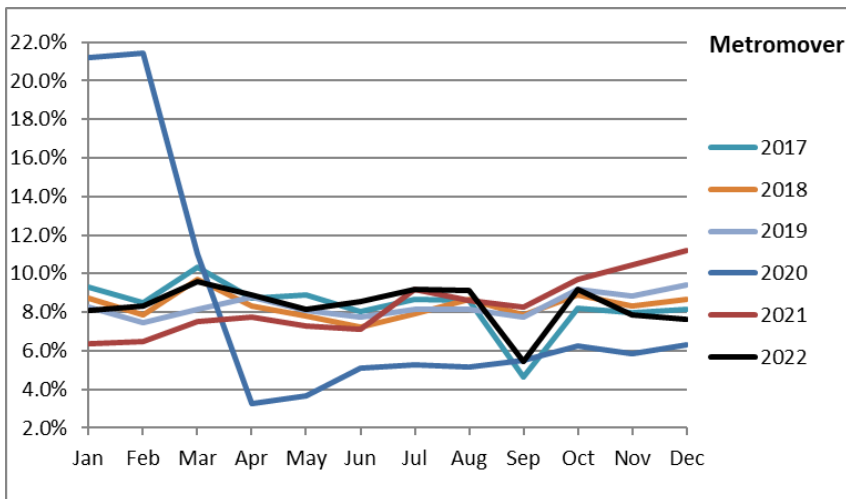
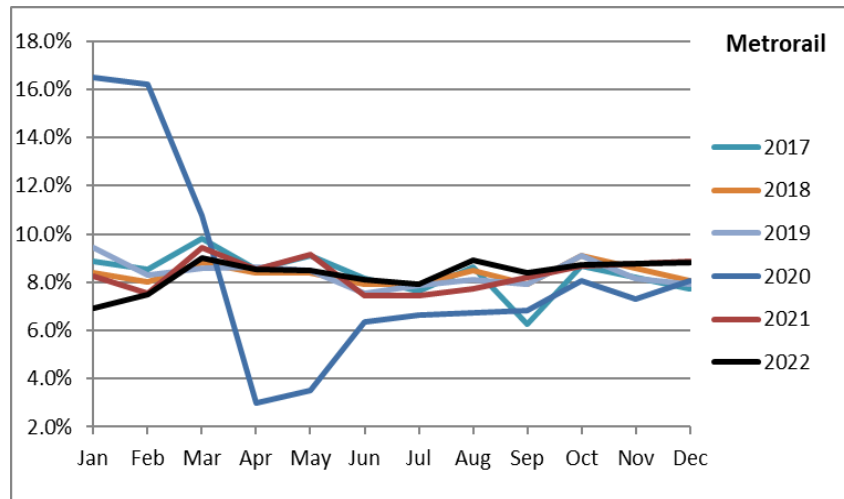
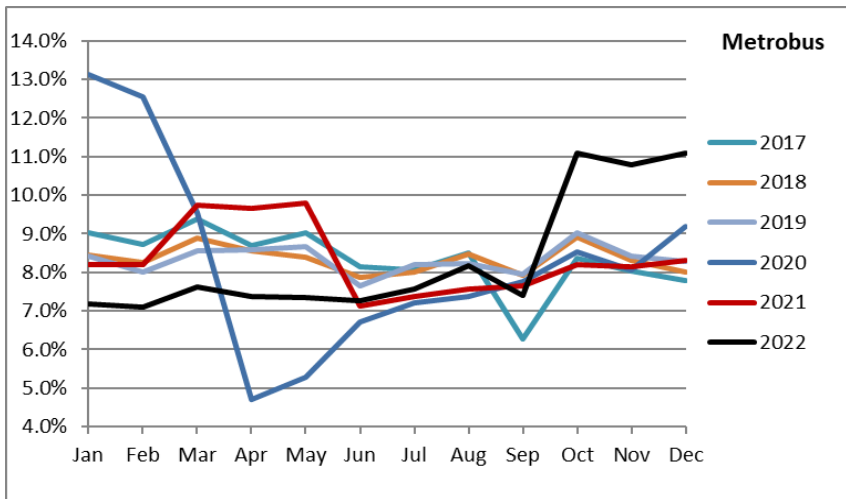




# Ridership Seasonality



# RIDERSHIP SEASONALITY – PERCENT RIDERSHIP SHARE BY MONTH AND CALENDAR YEAR FOR EACH MODE



Note: the prominent dips seen in the fall of 2017 and beginning in the spring of 2020 are due to Hurricane Irma and the SARS-CoV-2 pandemic, respectively. Reductions in Bus and Rail ridership share seen beginning in June 2021 are due to reinstatement of fares as well changes in reporting tools and datasets, as discussed earlier in this report. The prominent peaks seen beginning October 2022 are due from a changeover from farebox counts to ridership obtained from new automatic passenger counter technology on Metrobus.