



# TRANSPORTATION AND PUBLIC WORKS

## RIDERSHIP TECHNICAL REPORT (revised) *Division of Performance and Materials Management*



# Table of Contents

<i>Table of Contents</i>	2-3
<b>All Modes Overview</b>	<b>4</b>
Total Monthly Weekday, Saturday and Sunday Monthly Boardings By Mode	5
Average Weekday, Saturday and Sunday Boardings by Mode	6
Metrobus Total Monthly Ridership Comparisons by Fiscal Year	7
Metrorail Total Monthly Ridership Comparisons by Fiscal Year	8
Metromover Total Monthly Ridership Comparisons by Fiscal Year	9
STS Total Monthly Ridership Comparisons by Fiscal Year	10
All-Modes Combined Total Monthly Ridership Comparisons By Fiscal Year	11
All Modes Combined Total Monthly and Average Weekday Ridership – Year over Year Comparison Charts	12
Average Weekday Ridership – Modal Splits	13
<b>Metrobus (revised automatic passenger counter-based sampling data estimates for directly-operated bus routes)</b>	<b>14</b>
Metrobus Average Weekday Boardings by Route	15-17
Metrobus Average Saturday Boardings by Route	18-19
Metrobus Average Sunday Boardings by Route	20-21
Metrobus Monthly Total Boardings by Route	22-24
Year-over-Year Bus Ridership by Route Service Type	25-26
Bus Routes as Ranked by Percentage of Average Weekday Ridership	27
Metrobus Cumulative Percentage Average Weekday Ridership Share by Route (Top 75%)	28
Total Monthly and Average Weekday Bus Ridership – Year over Year Comparison Charts	29
Bus “Top 5 / Bottom 5” Routes Average Weekday Ridership Performance	30
Metrobus Parking Patronage Summary	31

## Table of Contents (continued)

<b>Metrorail</b>	<b>32</b>
Metrorail Average Weekday Boardings by Station	33
Metrorail Average Saturday Boardings by Station	34
Metrorail Average Sunday Boardings by Station	35
Metrorail Total Monthly Boardings by Station	36
Metrorail Cumulative Percentage Average Weekday Ridership Share	37
Total Monthly and Average Weekday Rail Ridership – Year over Year Comparison Charts	38
“Top 5 / Bottom 5” Stations Average Weekday Ridership Performance	39
Metrorail Parking Patronage Summary	40
<b>Metromover</b>	<b>41</b>
Monthly and Average Daily Mover Boardings by Station	42
Metromover Cumulative Percentage Average Weekday Ridership Share	43
Total Monthly and Average Weekday Mover Ridership – Year over Year Comparison Charts	44
“Top 5 / Bottom 5” Stations Average Weekday Ridership Performance	45
<b>Special Transportation Services (STS)</b>	<b>46</b>
STS Monthly and Average Daily Boardings	47
Total Monthly and Average Weekday STS Ridership – Year over Year Comparison Charts	48
<b>Ridership Seasonality</b>	<b>49</b>
Ridership Seasonality – Percent Ridership Share by Month and Calendar year for Each Mode	50

# All Modes Overview



**TOTAL MONTHLY WEEKDAY, SATURDAY AND SUNDAY BOARDINGS BY MODE**  
**February 2023**

<b>TRAVEL MODE</b>	<b>MONTH'S TOTAL WEEKDAYS RIDERSHIP</b>	<b>MONTH'S TOTAL SATURDAYS RIDERSHIP</b>	<b>MONTH'S TOTAL SUNDAYS RIDERSHIP</b>	<b>TOTAL MONTHLY RIDERSHIP</b>	<b>% CHANGE vs Feb 2022 TOTAL MONTH RIDERSHIP</b>
<b>METROBUS (1), (2)</b>	3,647,743	454,353	424,221	4,526,317	51.1%
<b>METRORAIL (3)</b>	931,079	80,719	60,993	1,072,791	18.5%
<b>METROMOVER (4)</b>	354,577	56,471	48,216	459,264	-1.4%
<b>STS PARATRANSIT (5)</b>	96,543	8,411	6,794	111,748	5.7%
<b>TOTAL</b>	<b>5,029,942</b>	<b>599,954</b>	<b>540,224</b>	<b>6,170,120</b>	<b>38.0%</b>

- (1) Metrobus fares resumed on June 1, 2021, following a 14-month period of fare-free rides as a result of the SARS-CoV-2 pandemic. The NextFare System farebox data replaced the bus automatic passenger counter data as ridership data of record starting on that date.
- (2) Bus ridership reporting through automatic passenger counters coupled with a new enhanced sensor system resumed on October 1, 2022.
- (3) Metrorail fares resumed on June 1, 2021, following a 14-month period of fare-free rides as a result of the SARS-CoV-2 pandemic. The NextFare System faregate data replaced the video data as ridership data of record starting on that date.
- (4) Beginning March 13, 2020 (day of National Emergency Declaration due to SARS-CoV-2 pandemic), only raw data from Metromover automatic passenger counters is reported; no estimates are performed after March 13, 2020.
- (5) Paratransit ridership data as reported by the contractor.

**AVERAGE WEEKDAY, SATURDAY AND SUNDAY BOARDINGS BY MODE  
February 2023**

<b>Travel Mode</b>	<b>Average Weekday</b>	<b>Average Saturday</b>	<b>Average Sunday</b>	<b>% Change Feb 2022 Weekday</b>	<b>% Change Feb 2022 Saturday</b>	<b>% Change Feb 2022 Sunday</b>
<b>METROBUS</b>	191,740	113,588	85,254	54.4%	51.6%	59.0%
<b>METRORAIL</b>	49,246	20,180	15,248	28.1%	6.4%	3.3%
<b>METROMOVER</b>	19,724	15,750	13,606	13.0%	2.8%	-7.3%
<b>STS PARATRANSIT</b>	4,827	2,103	1,699	5.8%	1.7%	9.8%
<b>Totals (1)</b>	<b>265,537</b>	<b>151,621</b>	<b>115,807</b>	<b>43.8%</b>	<b>36.3%</b>	<b>36.9%</b>

(\*) Average weekday ridership includes Presidents Day Holiday (February 20, 2023) for Metrobus and STS but excludes it for Metrorail and Metromover.

(\*\*) Average ridership is calculated and published only for those days and stations with nontrivial amounts of reported data.

## METROBUS TOTAL MONTHLY RIDERSHIP COMPARISONS BY FISCAL YEAR

<b>Bus</b>			<b>Variance</b>				<b>Variance</b>	<b>Variance</b>	<b>Variance</b>	<b>Variance</b>
<b>Month</b>	<b>FY 19</b>	<b>FY 20</b>	<b>19 to 20</b>	<b>FY 21</b>	<b>FY 22</b>	<b>FY 23</b>	<b>22 to 23</b>	<b>21 to 22</b>	<b>19 to 23</b>	<b>19 to 22</b>
<b>Oct</b>	4,554,886	4,507,012	-1.1%	2,805,139	3,081,157	4,679,725	51.9%	9.8%	2.7%	-32.4%
<b>Nov</b>	4,245,535	4,197,225	-1.1%	2,651,290	3,056,726	4,549,666	48.8%	15.3%	7.2%	-28.0%
<b>Dec</b>	4,081,581	4,126,990	1.1%	3,022,530	3,123,883	4,677,460	49.7%	3.4%	14.6%	-23.5%
<b>Jan</b>	4,195,911	4,316,998	2.9%	3,082,746	3,029,055	4,785,128	58.0%	-1.7%	14.0%	-27.8%
<b>Feb</b>	3,994,019	4,123,083	3.2%	3,076,966	2,995,789	4,526,317	51.1%	-2.6%	13.3%	-25.0%
<b>Mar</b>	4,266,768	3,136,162	-26.5%	3,660,639	3,218,562			-12.1%		-24.6%
<b>Apr</b>	4,291,135	1,544,316	-64.0%	3,625,048	3,105,797			-14.3%		-27.6%
<b>May</b>	4,330,922	1,734,609	-59.9%	3,683,343	3,097,574			-15.9%		-28.5%
<b>Jun</b>	3,823,863	2,210,725	-42.2%	2,672,570	3,064,059			14.6%		-19.9%
<b>Jul</b>	4,094,906	2,366,749	-42.2%	2,769,907	3,189,994			15.2%		-22.1%
<b>Aug</b>	4,109,613	2,422,014	-41.1%	2,843,552	3,442,006			21.0%		-16.2%
<b>Sep</b>	3,971,220	2,546,923	-35.9%	2,877,110	3,123,572			8.6%		-21.3%
<b>FY Total</b>	<b>49,960,359</b>	<b>37,232,806</b>	<b>-25.5%</b>	<b>36,770,840</b>	<b>37,528,174</b>			<b>2.1%</b>		<b>-24.9%</b>

## METRORAIL TOTAL MONTHLY RIDERSHIP COMPARISONS BY FISCAL YEAR

<b>Rail Month</b>	<b>FY 19</b>	<b>FY 20</b>	<b>Variance 19 to 20</b>	<b>FY 21</b>	<b>FY 22</b>	<b>FY 23</b>	<b>Variance 22 to 23</b>	<b>Variance 21 to 22</b>	<b>Variance 19 to 23</b>	<b>Variance 19 to 22</b>
<b>Oct</b>	1,757,225	1,643,166	-6.5%	769,525	844,383	1,053,191	24.7%	9.7%	-40.1%	-51.9%
<b>Nov</b>	1,656,929	1,469,448	-11.3%	699,492	850,881	1,055,066	24.0%	21.6%	-36.3%	-48.6%
<b>Dec</b>	1,553,804	1,433,928	-7.7%	769,194	860,436	1,063,096	23.6%	11.9%	-31.6%	-44.6%
<b>Jan</b>	1,708,695	1,576,340	-7.7%	799,119	832,924	1,127,340	35.3%	4.2%	-34.0%	-51.3%
<b>Feb</b>	1,501,458	1,549,118	3.2%	730,792	905,162	1,072,791	18.5%	23.9%	-28.6%	-39.7%
<b>Mar</b>	1,554,851	1,027,319	-33.9%	917,097	1,084,978			18.3%		-30.2%
<b>Apr</b>	1,559,446	287,803	-81.5%	827,414	1,027,139			24.1%		-34.1%
<b>May</b>	1,531,597	337,696	-78.0%	887,111	1,023,322			15.4%		-33.2%
<b>Jun</b>	1,359,966	608,758	-55.2%	723,469	975,477			34.8%		-28.3%
<b>Jul</b>	1,419,158	632,964	-55.4%	722,159	953,331			32.0%		-32.8%
<b>Aug</b>	1,463,646	641,275	-56.2%	749,578	1,076,490			43.6%		-26.5%
<b>Sep</b>	1,427,726	654,244	-54.2%	795,749	1,012,331			27.2%		-29.1%
<b>FY Total</b>	<b>18,494,501</b>	<b>11,862,059</b>	<b>-35.9%</b>	<b>9,390,699</b>	<b>11,446,854</b>			<b>21.9%</b>		<b>-38.1%</b>



## METROMOVER TOTAL MONTHLY RIDERSHIP COMPARISONS BY FISCAL YEAR

<b>Mover Month</b>	<b>FY 19</b>	<b>FY 20</b>	<b>Variance 19 to 20</b>	<b>FY 21</b>	<b>FY 22</b>	<b>FY 23</b>	<b>Variance 22 to 23</b>	<b>Variance 21 to 22</b>	<b>Variance 19 to 23</b>	<b>Variance 19 to 22</b>
<b>Oct</b>	790,533	831,234	5.1%	250,044	389,065	514,308	32.2%	55.6%	-34.9%	-50.8%
<b>Nov</b>	735,198	799,632	8.8%	232,422	418,929	439,150	4.8%	80.2%	-40.3%	-43.0%
<b>Dec</b>	767,239	849,832	10.8%	251,019	450,320	426,073	-5.4%	79.4%	-44.5%	-41.3%
<b>Jan</b>	746,728	847,773	13.5%	255,968	451,566	498,566	10.4%	76.4%	-33.2%	-39.5%
<b>Feb</b>	675,160	855,398	26.7%	260,332	465,968	459,264	-1.4%	79.0%	-32.0%	-31.0%
<b>Mar</b>	737,814	441,200	-40.2%	302,502	535,857			77.1%		-27.4%
<b>Apr</b>	795,696	130,549	-83.6%	310,772	495,982			59.6%		-37.7%
<b>May</b>	734,645	146,454	-80.1%	292,922	455,120			55.4%		-38.0%
<b>Jun</b>	701,318	203,637	-71.0%	286,145	477,286			66.8%		-31.9%
<b>Jul</b>	739,814	210,596	-71.5%	368,847	512,094			38.8%		-30.8%
<b>Aug</b>	739,785	205,995	-72.2%	344,319	508,359			47.6%		-31.3%
<b>Sep</b>	699,879	219,696	-68.6%	331,915	305,185			-8.1%		-56.4%
<b>FY Total</b>	<b>8,863,809</b>	<b>5,741,996</b>	<b>-35.2%</b>	<b>3,487,207</b>	<b>5,465,731</b>			<b>56.7%</b>		<b>-38.3%</b>

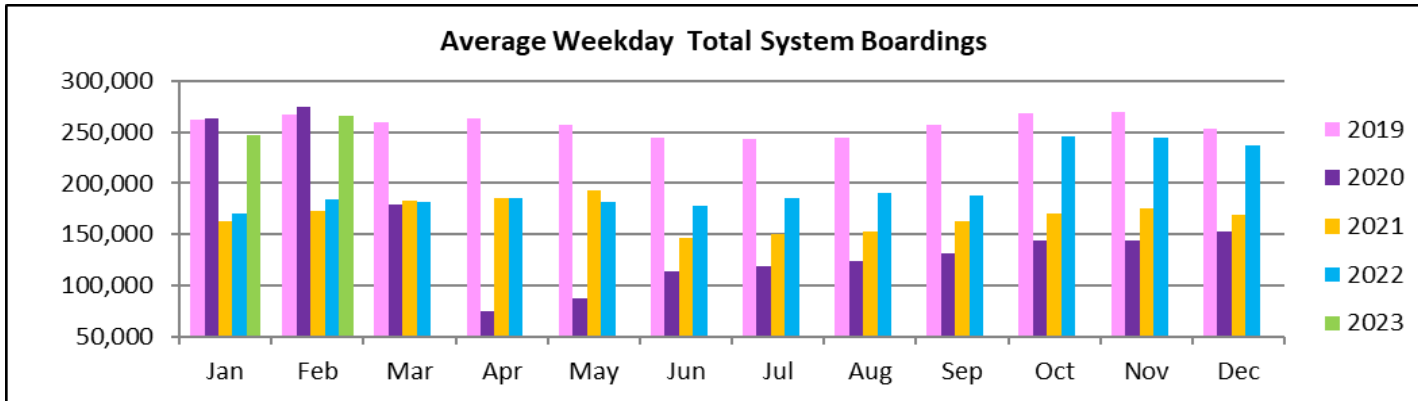
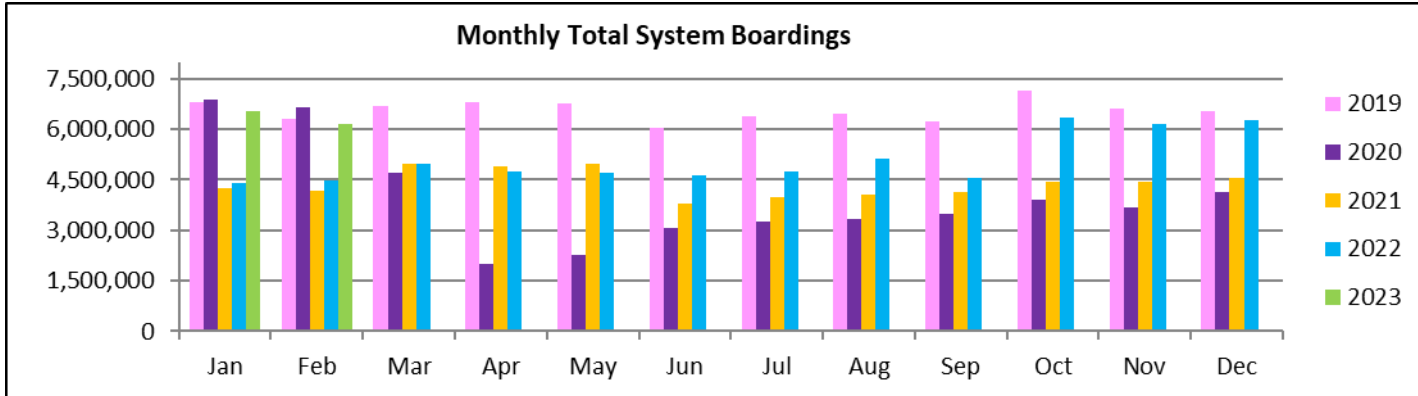
## SPECIAL TRANSPORTATION SERVICES (STS) TOTAL MONTHLY RIDERSHIP COMPARISONS BY FISCAL YEAR

<b>STS</b>			<b>Variance</b>				<b>Variance</b>	<b>Variance</b>	<b>Variance</b>	<b>Variance</b>
<b>Month</b>	<b>FY 19</b>	<b>FY 20</b>	<b>19 to 20</b>	<b>FY 21</b>	<b>FY 22</b>	<b>FY 23</b>	<b>22 to 23</b>	<b>21 to 22</b>	<b>19 to 23</b>	<b>19 to 22</b>
<b>Oct</b>	162,564	162,704	0.1%	97,388	115,122	122,189	6.1%	18.2%	-24.8%	-29.2%
<b>Nov</b>	145,653	144,366	-0.9%	89,387	110,289	111,578	1.2%	23.4%	-23.4%	-24.3%
<b>Dec</b>	136,110	138,642	1.9%	96,366	104,496	112,019	7.2%	8.4%	-17.7%	-23.2%
<b>Jan</b>	146,268	149,114	1.9%	97,928	97,541	112,632	15.5%	-0.4%	-23.0%	-33.3%
<b>Feb</b>	141,396	144,392	2.1%	98,285	105,706	111,748	5.7%	7.6%	-21.0%	-25.2%
<b>Mar</b>	153,191	89,634	-41.5%	112,930	120,718			6.9%		-21.2%
<b>Apr</b>	155,808	26,877	-82.7%	120,122	114,912			-4.3%		-26.2%
<b>May</b>	158,665	39,654	-75.0%	118,636	114,505			-3.5%		-27.8%
<b>Jun</b>	141,320	59,093	-58.2%	112,397	109,054			-3.0%		-22.8%
<b>Jul</b>	148,232	61,765	-58.3%	110,059	107,188			-2.6%		-27.7%
<b>Aug</b>	147,331	66,563	-54.8%	110,766	117,941			6.5%		-19.9%
<b>Sep</b>	141,387	80,346	-43.2%	115,406	108,788			-5.7%		-23.1%
<b>FY Total</b>	<b>1,777,925</b>	<b>1,163,150</b>	<b>-34.6%</b>	<b>1,279,670</b>	<b>1,326,260</b>			<b>3.6%</b>		<b>-25.4%</b>

## ALL-MODES COMBINED TOTAL MONTHLY RIDERSHIP COMPARISONS BY FISCAL YEAR

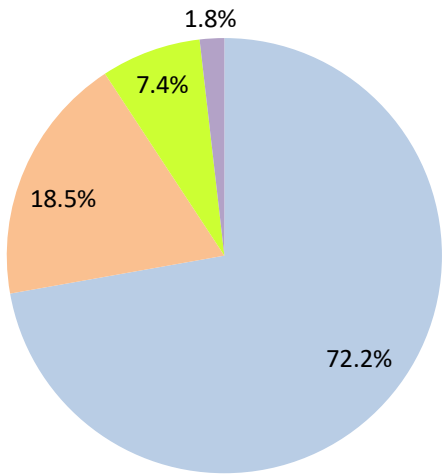
All Modes											
Month	FY 19	FY 20	FY 21	FY 22	FY 23	19 TO 20	20 TO 21	21 TO 22	22 TO 23	19 TO 23	19 TO 22
<b>Oct</b>	7,265,208	7,144,116	3,922,096	4,429,727	6,369,413	-1.7%	-45.1%	12.9%	43.8%	-12.3%	-39.0%
<b>Nov</b>	6,783,315	6,610,671	3,672,591	4,436,825	6,155,460	-2.5%	-44.4%	20.8%	38.7%	-9.3%	-34.6%
<b>Dec</b>	6,538,734	6,549,392	4,139,109	4,539,135	6,278,648	0.2%	-36.8%	9.7%	38.3%	-4.0%	-30.6%
<b>Jan</b>	6,797,602	6,890,225	4,235,761	4,411,086	6,523,666	1.4%	-38.5%	4.1%	47.9%	-4.0%	-35.1%
<b>Feb</b>	6,312,033	6,671,991	4,166,375	4,472,625	6,170,120	5.7%	-37.6%	7.4%	38.0%	-2.2%	-29.1%
<b>Mar</b>	6,712,624	4,694,315	4,993,168	4,960,115		-30.1%	6.4%	-0.7%			-26.1%
<b>Apr</b>	6,802,085	1,989,545	4,883,356	4,743,830		-70.8%	145.5%	-2.9%			-30.3%
<b>May</b>	6,755,829	2,258,413	4,982,012	4,690,521		-66.6%	120.6%	-5.9%			-30.6%
<b>Jun</b>	6,026,467	3,082,213	3,794,581	4,625,876		-48.9%	23.1%	21.9%			-23.2%
<b>Jul</b>	6,402,110	3,272,074	3,970,972	4,762,607		-48.9%	21.4%	19.9%			-25.6%
<b>Aug</b>	6,460,375	3,335,847	4,048,215	5,144,796		-48.4%	21.4%	27.1%			-20.4%
<b>Sep</b>	6,240,212	3,501,209	4,120,180	4,549,876		-43.9%	17.7%	10.4%			-27.1%
<b>FY Total</b>	<b>79,096,594</b>	<b>56,000,011</b>	<b>50,928,416</b>	<b>55,767,019</b>		<b>-29.2%</b>	<b>-9.1%</b>	<b>9.5%</b>			<b>-29.5%</b>

## TOTAL MONTHLY AND AVERAGE WEEKDAY RIDERSHIP YEAR OVER YEAR COMPARISON CHARTS – ALL MODES COMBINED



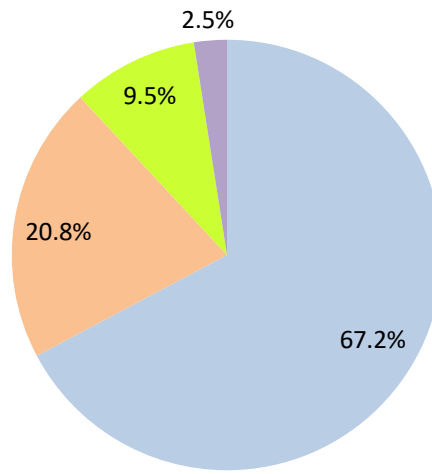
# AVERAGE WEEKDAY RIDERSHIP - MODAL SPLITS

February 2023



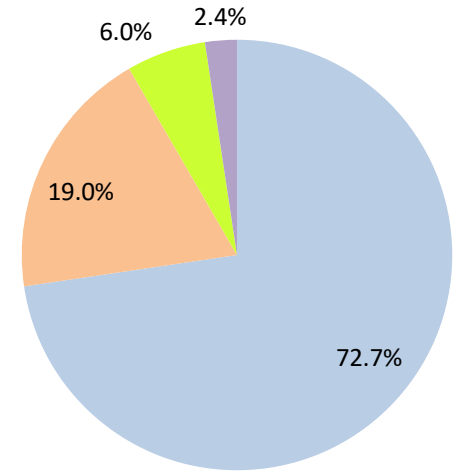
boardings

February 2022



boardings

February 2021



boardings



# Metrobus



## METROBUS AVERAGE WEEKDAY BOARDINGS BY ROUTE (†)

Route	Average Weekday	Average Weekday	Percent Change	Average Weekday	Percent Change	Average Weekday	Percent Change	Average Weekday	Percent Change
	Feb-23	Feb-22	YOY	Feb-20	Current vs Feb-20	Jan-23	MOM	Feb-21	YO2Y
<b>weekdays</b>									
1 (*)	203	167	22.0%	184	10.5%	219	-7.0%	149	36.5%
2	2,858	2,035	40.4%	3,102	-7.9%	2,617	9.2%	2,050	39.4%
3	5,253	3,869	35.8%	5,137	2.3%	5,090	3.2%	4,405	19.2%
7	4,115	2,753	49.5%	3,501	17.5%	3,848	6.9%	2,061	99.7%
8	5,076	3,428	48.1%	3,909	29.9%	4,679	8.5%	3,634	39.7%
9	6,326	4,084	54.9%	5,528	14.4%	5,996	5.5%	5,621	12.5%
10	2,436	1,865	30.6%	2,482	-1.8%	2,266	7.5%	1,718	41.8%
11	9,152	6,272	45.9%	7,292	25.5%	8,574	6.7%	5,813	57.4%
12	3,155	1,936	63.0%	2,779	13.5%	2,930	7.7%	2,079	51.8%
16	2,014	1,413	42.5%	1,862	8.2%	1,945	3.5%	1,365	47.6%
17	4,086	2,716	50.4%	3,878	5.3%	3,784	8.0%	2,905	40.7%
19	1,697	860	97.2%	1,542	10.0%	1,515	12.0%	1,103	53.8%
21	1,844	1,250	47.5%	1,817	1.5%	1,781	3.6%	1,668	10.6%
22	4,579	2,755	66.2%	3,640	25.8%	4,350	5.3%	2,678	71.0%
24 - Coral Way Limited	2,374	1,476	60.9%	1,340	77.2%	2,297	3.4%	1,400	69.5%
27	7,601	5,061	50.2%	6,972	9.0%	6,921	9.8%	5,624	35.2%
29 (*)	504	442	14.1%	534	-5.6%	475	6.1%	378	33.6%
31 - BUSWAY LOCAL	1,213	666	82.1%	1,089	11.3%	1,098	10.4%	553	119.2%
32	2,789	1,774	57.2%	2,390	16.7%	2,577	8.2%	1,508	85.0%
33	2,073	1,158	79.1%	1,687	22.9%	1,855	11.8%	1,061	95.4%
34 EXPRESS	1,575	989	59.3%	2,008	-21.6%	1,406	12.0%	837	88.2%
35	2,869	1,563	83.6%	2,421	18.5%	2,669	7.5%	1,776	61.5%
36	2,876	2,099	37.0%	2,536	13.4%	2,643	8.8%	1,870	53.8%
37	3,885	2,552	52.2%	3,273	18.7%	3,624	7.2%	2,805	38.5%
38	5,809	4,059	43.1%	6,361	-8.7%	5,607	3.6%	4,479	29.7%
39 EXPRESS				893				233	
40	2,445	1,338	82.7%	1,772	38.0%	2,199	11.2%	1,155	111.7%
42	1,185	683	73.7%	820	44.5%	1,101	7.6%	707	67.7%
46 - LIBERTY CITY CONN. (*)	23	21	6.3%	41	-44.1%	21	7.4%	26	-12.2%
51 - FLAGLER MAX	4,226	2,653	59.3%	3,109	35.9%	3,923	7.7%	2,177	94.1%
52	1,457	876	66.4%	1,261	15.5%	1,336	9.1%	920	58.4%
54	3,422	2,180	57.0%	2,940	16.4%	3,095	10.6%	2,521	35.7%
55 MARLINS SHUTTLE									
56 (*)	403	269	49.4%	354	13.9%	350	15.0%	193	108.2%
57	534	276	93.8%	433	23.3%	495	7.9%	285	87.5%
62	1,953	1,248	56.6%	1,815	7.6%	1,737	12.5%	1,637	19.3%
71 (*)	763	481	58.6%	711	7.4%	741	2.9%	382	99.9%
72 (*)	781	526	48.4%	781	-0.1%	660	18.3%	418	86.9%

(†) In this table and those which follow, "YOY" stands for "year-over-year", "MOM" for "month-over-month" and "YO2Y" for "year over two years", i.e., current month vs 12 months prior, one month prior, and 24 months prior, respectively.

(\*) Contracted routes

(\*\*) Due to effects from the SARS-CoV-2 pandemic; rides were fare-free beginning March 22, 2020; fares were reinstated on June 1, 2021, in part accounting for the drop in ridership from May 2021.

## METROBUS AVERAGE WEEKDAY BOARDINGS BY ROUTE

Route	Average Weekday	Average Weekday	Percent Change	Average Weekday	Percent Change	Average Weekday	Percent Change	Average Weekday	Percent Change
	weekdays Feb-23	Feb-22	YOY	Feb-20	Current vs Feb-20	Jan-23	MOM	Feb-21	YO2Y
73	3,337	1,948	71.3%	2,124	57.1%	3,119	7.0%	1,675	99.2%
75	1,447	864	67.5%	1,429	1.3%	1,302	11.2%	1,049	38.0%
77	9,332	5,923	57.5%	7,129	30.9%	8,704	7.2%	6,413	45.5%
79 STREET MAX	634	297	113.3%	361	75.4%	534	18.8%		
82 - WESTCHESTER CIRC. (*)	61	30	101.5%	62	-0.9%	61	0.5%	29	107.0%
87	2,177	1,305	66.8%	1,499	45.2%	1,930	12.8%	1,166	86.7%
88	2,578	1,619	59.2%	2,076	24.1%	2,455	5.0%	1,676	53.8%
93 - BISCAYNE MAX	3,782	2,329	62.4%	3,334	13.4%	3,580	5.6%	1,753	115.7%
95 EXPRESS	1,096	724	51.5%	1,690	-35.1%	932	17.7%	397	176.2%
99	1,712	1,185	44.5%	1,473	16.3%	1,605	6.7%	1,219	40.4%
101 - A (*)	250	187	34.0%	177	41.5%	253	-0.8%	110	127.2%
102 - B	2,319	1,449	60.0%	1,778	30.4%	2,171	6.8%	1,010	129.5%
103 - C				463				315	
104	997	533	87.1%	837	19.1%	922	8.1%	361	176.0%
105 - E	1,540	983	56.6%	1,287	19.6%	1,445	6.5%	1,048	46.9%
107 - G	2,122	1,291	64.4%	1,713	23.9%	1,924	10.3%	1,050	102.2%
108 - H	592	375	58.1%	473	25.4%	599	-1.0%	400	48.0%
110 - J	3,291	2,025	62.6%	2,508	31.2%	3,181	3.5%	2,701	21.9%
112 - L	9,303	6,012	54.7%	7,636	21.8%	8,875	4.8%	7,280	27.8%
113 - M	605	552	9.5%	866	-30.1%	670	-9.8%	611	-1.0%
115 (*)	150	141	6.5%	180	-16.7%	163	-7.7%	172	-12.6%
119 - S	10,414	7,434	40.1%	8,970	16.1%	10,578	-1.5%	8,229	26.6%
120 - BEACH MAX	7,433	5,237	41.9%	6,667	11.5%	7,196	3.3%	4,760	56.2%
132 TRI-RAIL (DORAL)	41	12	245.2%	16	163.8%	42	-1.1%	22	90.5%
135	1,684	935	80.2%	1,399	20.4%	1,438	17.1%	800	110.6%
136	146	123	19.2%	126	15.9%	155	-5.7%	62	134.1%
137 - WEST DADE CONN.	2,355	1,265	86.1%	1,626	44.9%	2,191	7.5%	1,101	113.9%
150 - MIAMI BEACH AIRPORT FLYER	2,372	1,358	74.7%	1,867	27.0%	2,286	3.8%	1,145	107.1%
155 - BISCAYNE GARDENS CIRCULATOR (*)	43	30	45.4%	44	-2.6%	45	-4.5%	29	46.7%
175 - NW MIAMI-DADE EXPRESS				33					
183	3,679	2,308	59.5%	3,149	16.9%	3,335	10.3%	2,501	47.1%
195 EXPRESS - BROWARD BLVD				372					
196 EXPRESS - SHERIDAN ST				383					
200 - CUTLER BAY LOCAL	130	77	69.5%	158	-17.6%	124	5.0%	126	2.9%
202 - LITTLE HAITI CONN. (*)	76	116	-34.0%	140	-45.4%	75	2.1%	117	-35.0%
204 KILLIAN KAT	752	418	79.7%	1,071	-29.8%	651	15.4%		



## METROBUS AVERAGE WEEKDAY BOARDINGS BY ROUTE

Route	Average Weekday	Average Weekday	Percent Change	Average Weekday	Percent Change	Average Weekday	Percent Change	Average Weekday	Percent Change
	Feb-23	Feb-22	YOY	Feb-20	Current vs Feb-20	Jan-23	MOM	Feb-21	YO2Y
<b>weekdays</b>									
207 (7st) - LITTLE HAVANA CIRC	1,869	1,102	69.6%	1,489	25.5%	1,678	11.4%	766	143.9%
208 (8st) - LITTLE HAVANA CIRC	1,783	991	79.9%	1,308	36.3%	1,557	14.5%	761	134.1%
210 - SKYLAKE CIRC (*)	311	266	16.6%	282	10.2%	342	-9.2%	327	-4.9%
211 - OVERTOWN CIRC. (*)	87	88	-0.6%	58	50.2%	90	-3.4%	48	82.1%
212 - SWEETWATER CIRC. (*)	27	30	-11.2%	15	80.7%	23	13.8%	13	98.1%
217 - BUNCHE PARK CIRC (*)	61	67	-9.0%	97	-37.3%	56	9.1%	67	-8.2%
238 EAST/WEST CONN.	639	382	67.3%	449	42.3%	620	3.1%	327	95.3%
241 TUTTLE LIMITED	302	76	296.2%			231	31.0%		
246 - NIGHT OWL	56	40	40.5%	94	-40.2%	59	-6.0%	86	-35.3%
248 - PRINCETON CIRCULATOR (*)	153	79	94.7%	135	13.9%	136	12.6%	83	85.0%
252 - CORAL REEF MAX	1,133	602	88.1%	851	33.1%	1,010	12.2%	492	130.1%
254 - BROWNSVILLE CIRC. (*)	6	8	-27.7%	19	-70.1%	8	-26.5%	21	-72.5%
267 - LUDLAM LIMITED (*)	176	118	48.9%	149	18.1%	166	5.8%	116	52.2%
272 SUNSET KAT (*)	402	299	34.2%	550	-27.0%	367	9.5%	259	55.3%
277 - 7th AVENUE MAX	828	517	60.3%	683	21.1%	691	19.8%	463	78.8%
286 - NORTH POINTE CIRC. (*)	91	54	70.5%	97	-6.0%	79	15.4%	33	177.2%
287 - SAGA BAY MAX	387	203	90.4%	358	8.1%	300	29.2%	147	162.9%
288 - KENDALL CRUISER	491	408	20.5%	762	-35.6%	457	7.5%		
295 EXPRESS - BROWARD BLVD - CIVIC CENTER				233					
296 EXPRESS - SHERIDAN ST - CIVIC CENTER				215					
297-27th AVENUE ORANGE MAX	1,318	835	57.9%	1,356	-2.8%	1,214	8.6%	888	48.4%
301 DADE-MONROE EXPRESS (*)	886	771	15.0%	841	5.4%	821	8.0%	890	-0.4%
302 CARD SOUND EXPRESS (*)	126	70	81.1%	86	46.5%	109	16.1%	79	59.9%
344 (*)	73	53	39.4%	96	-23.6%	71	3.8%	76	-3.8%
500	79	13	494.4%	81	-2.7%	77	2.8%	63	24.4%
836 EXPRESS	257	135	90.8%			226	13.8%		
837 EXPRESS	116					99	17.1%		
GREEN HILLS SHUTTLE (*)	4	5	-20.0%	9	-55.6%	4	0.0%	7	-40.7%
KINGS CREEK SHUTTLE (*)	19	11	72.7%	13	46.2%	17	13.4%	8	153.3%
SIERRA LAKES SHUTTLE (*)	16	16	-3.1%	45	-65.0%	15	5.0%	19	-17.1%
ROBERT SHARP SHUTTLE (*)	23	19	18.4%	10	136.8%	18	28.6%	22	2.3%
AHEPA SHUTTLE (*)	16	17	-5.8%	21	-21.7%	16	1.6%	20	-19.8%
<b>Total</b>	<b>191,740</b>	<b>124,148</b>	<b>54.4%</b>	<b>167,711</b>	<b>14.3%</b>	<b>179,518</b>	<b>6.8%</b>	<b>125,599</b>	<b>52.7%</b>

(\*) The following routes are entirely operated under contract: 1, 29, 46, 56, 71, 72, 82, 101-A, 115, 155, 202, 210, 211, 212, 217, 246, 248, 254, 267, 272, 286, 301, 302 and 344.

(1) Includes shuttles and those routes which were not run both years.

(2) Several express routes were suspended beginning at the end of March 2020, due to the SARS-CoV-2 pandemic, while other routes had alignment and schedule modifications made to them, in an ongoing effort to optimize service delivery.

## METROBUS AVERAGE SATURDAY BOARDINGS BY ROUTE

Route	Average Saturday	Average Saturday	Percent Change	Average Saturday	Percent Change	Average Saturday	Percent Change	Average Saturday	Percent Change
	Feb-23	Feb-22	YOY	Feb-20	Current vs Feb-20	Jan-23	MOM	Feb-21	YO2Y
<b>Saturdays</b>									
1 (*)	176	111	58.6%	215	-18.1%	178	-1.0%	181	-2.6%
2	1,690	1,090	55.1%	1,616	4.5%	1,522	11.1%	1,016	66.4%
3	5,821	4,077	42.8%	5,229	11.3%	6,001	-3.0%	4,255	36.8%
7	2,173	1,665	30.5%	1,887	15.1%	1,965	10.6%	1,218	78.4%
8	2,780	1,895	46.7%	2,027	37.1%	2,465	12.8%	2,216	25.5%
9	3,403	2,459	38.4%	3,034	12.2%	3,371	0.9%	3,105	9.6%
10	1,896	1,475	28.5%	1,896	0.0%	1,935	-2.0%	1,724	9.9%
11	6,838	4,577	49.4%	5,182	31.9%	6,694	2.1%	3,535	93.4%
16	1,748	1,220	43.3%	1,566	11.6%	1,765	-1.0%	1,420	23.2%
17	2,476	1,800	37.6%	2,363	4.8%	2,496	-0.8%	1,919	29.1%
22	2,415	1,614	49.7%	2,084	15.9%	2,445	-1.2%	1,888	27.9%
24 - Coral Way Limited	1,608	1,052	52.9%	1,165	37.9%	1,575	2.1%	1,084	48.3%
27	4,444	3,044	46.0%	4,034	10.2%	4,230	5.1%	4,094	8.5%
31 - BUSWAY LOCAL	913	583	56.5%	896	1.9%	924	-1.2%	922	-0.9%
32	1,247	833	49.8%	1,029	21.2%	1,083	15.2%	902	38.2%
33	1,168	727	60.6%	951	22.8%	1,145	1.9%	708	64.8%
35	1,608	1,045	53.9%	1,372	17.2%	1,530	5.1%	1,242	29.4%
36	1,711	1,213	41.1%	1,289	32.7%	1,585	8.0%	1,166	46.8%
37	2,312	1,615	43.2%	2,090	10.6%	2,148	7.7%	1,792	29.1%
38	4,939	3,414	44.7%	4,715	4.7%	5,157	-4.2%	3,299	49.7%
40	918	563	63.2%	655	40.2%	924	-0.6%	597	53.9%
42	637	501	27.3%	552	15.5%	698	-8.7%	615	3.5%
52	706	470	50.1%	686	2.9%	748	-5.7%	562	25.6%
54	2,080	1,441	44.4%	1,727	20.5%	2,000	4.0%	1,697	22.6%
55 MARLINS SHUTTLE									
62	1,393	917	51.9%	1,343	3.7%	1,408	-1.1%	1,213	14.8%
71 (*)	263	192	37.0%	252	4.4%	259	1.6%	205	28.4%
72 (*)	400	286	39.8%	350	14.3%	363	10.2%	269	48.5%
73	1,411	928	52.1%	860	64.0%	1,471	-4.0%	832	69.6%
75	516	264	95.7%	468	10.2%	456	13.1%	437	18.0%
77	5,717	3,858	48.2%	4,197	36.2%	5,639	1.4%	3,223	77.4%
87	678	405	67.4%	402	68.4%	625	8.4%	424	59.9%
88	1,883	1,272	48.1%	1,620	16.2%	1,797	4.8%	1,362	38.2%
99	1,071	809	32.4%	849	26.2%	1,077	-0.6%	855	25.3%

## METROBUS AVERAGE SATURDAY BOARDINGS BY ROUTE

Route	Average Saturday	Average Saturday	Percent Change	Average Saturday	Percent Change	Average Saturday	Percent Change	Average Saturday	Percent Change
Saturdays	Feb-23	Feb-22	YOY	Feb-20	Current vs Feb-20	Jan-23	MOM	Feb-21	YO2Y
101 - A (*)	72	60	19.5%	71	1.7%	106	-32.2%	58	24.7%
102 - B	1,256	754	66.6%	851	47.6%	1,220	3.0%	575	118.5%
103 - C				315				349	
104	543	295	84.0%	468	16.0%	486	11.8%	182	199.3%
105 - E	831	598	39.0%	619	34.2%	747	11.3%	743	11.9%
107 - G	1,379	992	39.0%	1,066	29.3%	1,289	7.0%	1,098	25.6%
108 - H	463	332	39.3%	372	24.3%	453	2.1%	395	17.3%
110 - J	2,269	1,468	54.6%	1,952	16.2%	2,152	5.4%	1,848	22.8%
112 - L	7,513	4,389	71.2%	5,667	32.6%	7,138	5.2%	5,268	42.6%
113 - M	465	345	34.9%	503	-7.6%	460	1.2%	481	-3.4%
115 (*)	82	95	-13.2%	82	0.1%	90	-8.4%	135	-39.0%
119 - S	9,092	5,355	69.8%	6,861	32.5%	8,807	3.2%	6,421	41.6%
120 - BEACH MAX	6,553	3,844	70.5%	4,744	38.1%	6,362	3.0%	3,723	76.0%
135	533	331	61.3%	539	-1.0%	496	7.6%	367	45.1%
137 - WEST DADE CONN.	1,485	898	65.3%	1,027	44.5%	1,504	-1.3%	876	69.6%
150 - MIAMI BEACH AIRPORT FLYER	2,341	1,347	73.8%	1,604	46.0%	2,113	10.8%	1,256	86.4%
183	2,133	1,456	46.5%	1,790	19.2%	1,971	8.2%	1,722	23.9%
200 - CUTLER BAY LOCAL	117	34	239.3%	119	-2.3%	90	29.4%	108	7.6%
202 - LITTLE HAITI CONN. (*)	29	61	-53.5%	50	-43.2%	26	10.7%	109	-73.9%
207 (7st) - LITTLE HAVANA CIRC	1,107	801	38.2%	1,032	7.2%	1,039	6.5%	926	19.6%
208 (8st) - LITTLE HAVANA CIRC	1,299	654	98.5%	1,044	24.3%	1,180	10.1%	684	89.8%
210 - SKYLAKE CIRC (*)	97	149	-34.7%	165	-41.1%	69	41.5%	148	-34.4%
241 TUTTLE LIMITED	220	36	518.3%			158	38.9%		
246 - NIGHT OWL	44	51	-14.1%	84	-47.9%	34	30.4%	89	-50.4%
252 - CORAL REEF MAX	420	244	72.5%	302	39.1%	394	6.6%	275	52.7%
286 - NORTH POINTE CIRC. (*)	63	50	26.6%	41	54.4%	64	-1.9%	34	83.9%
301 DADE-MONROE EXPRESS (*)	815	742	9.8%	801	1.7%	770	5.8%	915	-10.9%
302 CARD SOUND EXPRESS (*)	96	42	128.7%	57	68.7%	75	27.8%	89	7.9%
338 - WEEKEND EXPRESS	256	143	79.2%	237	8.1%	259	-1.2%	206	24.0%
500	77	13	492.3%	70	10.0%	90	-14.4%	91	-15.6%
12/21 WEEKEND INTERL.	2,850	1,865	52.8%	2,528	12.7%	2,548	11.8%	2,148	32.7%
FEDERATION GARDENS SHUTTLE (*)	20	24	-15.8%	28	-29.6%	16	27.0%	17	17.6%
<b>Total</b>	<b>113,588</b>	<b>74,909</b>	<b>51.6%</b>	<b>93,742</b>	<b>21.2%</b>	<b>109,921</b>	<b>3.3%</b>	<b>81,346</b>	<b>39.6%</b>

## METROBUS AVERAGE SUNDAY BOARDINGS BY ROUTE

Route	Average Sunday	Average Sunday	Percent Change	Average Sunday	Percent Change	Average Sunday	Percent Change	Average Sunday	Percent Change
	Feb-23	Feb-22	YOY	Feb-20	Current vs Feb-20	Jan-23	MOM	Feb-21	YO2Y
<b>Sundays</b>									
1 (*)	157	111	41.3%	201	-21.7%	146	7.7%	155	1.3%
2	1,136	812	40.0%	1,335	-14.9%	1,026	10.8%	635	78.9%
3	5,003	3,105	61.1%	4,353	14.9%	4,690	6.7%	3,904	28.1%
7	1,565	1,150	36.1%	1,654	-5.4%	1,561	0.3%	816	91.8%
8	1,963	1,288	52.4%	1,746	12.4%	1,760	11.5%	1,409	39.3%
9	2,978	1,657	79.8%	2,549	16.8%	2,603	14.4%	2,508	18.7%
10	1,657	1,036	59.9%	1,441	15.0%	1,504	10.1%	1,004	65.0%
11	4,394	2,818	55.9%	3,917	12.2%	4,207	4.4%	2,229	97.1%
16	1,100	695	58.4%	997	10.4%	978	12.5%	661	66.6%
17	1,845	1,266	45.7%	1,833	0.6%	1,784	3.4%	1,298	42.2%
22	1,929	1,197	61.1%	1,548	24.6%	1,813	6.4%	1,351	42.7%
24 - Coral Way Limited	1,187	777	52.9%	905	31.2%	1,102	7.7%	803	47.9%
27	3,168	1,921	64.9%	2,918	8.6%	2,861	10.7%	2,895	9.4%
31 - BUSWAY LOCAL	774	418	85.0%	715	8.3%	645	20.0%	550	40.7%
32	816	487	67.6%	772	5.6%	714	14.3%	546	49.5%
33	670	418	60.5%	607	10.5%	620	8.1%	494	35.6%
35	1,114	628	77.3%	942	18.3%	1,111	0.2%	906	22.9%
36	1,203	866	39.0%	1,111	8.4%	1,127	6.8%	1,098	9.6%
37	1,897	1,134	67.3%	1,739	9.1%	1,778	6.7%	1,111	70.9%
38	4,895	2,816	73.8%	4,147	18.1%	3,951	23.9%	2,766	77.0%
40	550	317	73.8%	447	23.1%	544	1.2%	336	63.8%
42	427	277	54.3%	416	2.6%	411	3.8%	313	36.4%
52	512	296	72.8%	466	9.8%	461	11.0%	422	21.3%
54	1,254	803	56.1%	1,171	7.1%	1,150	9.1%	1,115	12.5%
55 MARLINS SHUTTLE									
62	885	525	68.5%	891	-0.6%	830	6.6%	949	-6.8%
71 (*)	109	99	10.1%	162	-32.6%	156	-29.9%	129	-15.3%
72 (*)	398	262	51.9%	265	50.5%	328	21.3%	217	83.4%
73	776	406	91.3%	495	56.9%	680	14.2%	362	114.8%
75	322	191	68.8%	271	19.1%	301	7.2%	361	-10.6%
77	3,589	2,298	56.2%	2,815	27.5%	3,529	1.7%	2,655	35.2%
87	405	274	48.1%	319	27.1%	357	13.4%	215	88.3%
88	1,379	906	52.3%	1,286	7.3%	1,256	9.8%	768	79.7%
99	808	510	58.4%	658	22.8%	746	8.3%	612	32.0%

## METROBUS AVERAGE SUNDAY BOARDINGS BY ROUTE

Route	Average Sunday	Average Sunday	Percent Change	Average Sunday	Percent Change	Average Sunday	Percent Change	Average Sunday	Percent Change
	Feb-23	Feb-22	YOY	Feb-20	Current vs Feb-20	Jan-23	MOM	Feb-21	YO2Y
<b>Sundays</b>									
101 - A (*)	40	28	42.9%	56	-27.9%	36	12.4%	72	-44.6%
102 - B	953	540	76.7%	717	33.0%	866	10.1%	520	83.3%
103 - C				212				232	
104	349	203	71.9%	317	10.1%	321	8.9%	221	58.1%
105 - E	737	536	37.6%	616	19.7%	727	1.3%	632	16.6%
107 - G	1,057	627	68.6%	895	18.1%	979	7.9%	912	16.0%
108 - H	383	251	52.4%	328	16.6%	398	-3.8%	358	7.0%
110 - J	1,933	1,173	64.7%	1,638	18.0%	1,856	4.1%	1,319	46.5%
112 - L	5,320	3,465	53.5%	4,804	10.7%	5,420	-1.8%	3,824	39.1%
113 - M	407	300	35.6%	431	-5.6%	488	-16.7%	323	25.9%
115 (*)	58	77	-24.2%	80	-27.5%	61	-4.3%	130	-55.2%
119 - S	8,724	5,725	52.4%	7,141	22.2%	9,352	-6.7%	6,319	38.1%
120 - BEACH MAX	4,070	2,134	90.8%	3,469	17.3%	3,987	2.1%	2,259	80.2%
135	396	234	69.6%	349	13.5%	343	15.6%	240	65.3%
137 - WEST DADE CONN.	1,020	608	67.9%	879	16.0%	931	9.5%	623	63.7%
150 - MIAMI BEACH AIRPORT FLYER	2,134	1,212	76.0%	1,574	35.6%	2,143	-0.4%	1,277	67.2%
183	1,610	1,002	60.6%	1,413	13.9%	1,439	11.9%	1,291	24.7%
200 - CUTLER BAY LOCAL	227	13	1646.2%	59	288.0%	148	53.0%	58	293.6%
202 - LITTLE HAITI CONN. (*)	27	42	-36.7%	39	-31.4%	28	-5.8%	109	-75.5%
207 (7st) - LITTLE HAVANA CIRC	997	553	80.3%	796	25.2%	657	51.8%	500	99.3%
208 (8st) - LITTLE HAVANA CIRC	929	438	112.0%	911	1.9%	893	4.1%	424	119.4%
210 - SKYLAKE CIRC (*)	88	98	-10.2%	143	-38.5%	88	0.0%	117	-24.9%
241 TUTTLE LIMITED	310	53	487.3%			123	151.9%		
246 - NIGHT OWL	65	32	103.1%	87	-25.3%	69	-5.5%	68	-4.4%
252 - CORAL REEF MAX	331	185	78.9%	199	66.5%	307	7.9%	198	67.6%
301 DADE-MONROE EXPRESS (*)	770	636	21.2%	751	2.5%	697	10.5%	850	-9.4%
302 CARD SOUND EXPRESS (*)	110	48	129.2%	57	93.0%	67	63.2%	53	106.6%
338 - WEEKEND EXPRESS	222	172	29.1%	252	-11.9%	239	-7.1%	106	109.4%
500	63	10	534.0%	83	-23.4%	67	-4.8%	59	8.4%
12/21 WEEKEND INTERL.	1,060	1,480	-28.4%	2,048	-48.3%			1,626	-34.8%
<b>Total</b>	<b>85,254</b>	<b>53,633</b>	<b>59.0%</b>	<b>75,428</b>	<b>13.0%</b>	<b>79,457</b>	<b>7.3%</b>	<b>60,308</b>	<b>41.4%</b>

## METROBUS TOTAL MONTHLY BOARDINGS BY ROUTE

Route	Total Month	Total Month	Percent Change	Total Month	Percent Change	Total Month	Percent Change	Total Month	Percent Change
	Feb-23	Feb-22	YOY	Feb-20	Current vs Feb-20	Jan-23	MOM	Feb-21	YO2Y
<b>Monthly Total</b>									
1 (*)	5,401	4,224	27.9%	5,558	-2.8%	6,254	-13.6%	4,324	24.9%
2	66,734	48,301	38.2%	75,463	-11.6%	68,787	-3.0%	47,595	40.2%
3	148,102	106,113	39.6%	146,294	1.2%	159,440	-7.1%	120,733	22.7%
7	94,705	66,324	42.8%	86,077	10.0%	100,330	-5.6%	49,350	91.9%
8	117,389	81,299	44.4%	95,295	23.2%	121,591	-3.5%	87,176	34.7%
9	148,690	98,143	51.5%	135,924	9.4%	158,404	-6.1%	134,863	10.3%
10	62,152	47,335	31.3%	64,874	-4.2%	65,103	-4.5%	45,275	37.3%
11	223,205	155,018	44.0%	187,425	19.1%	236,448	-5.6%	139,312	60.2%
12	59,950	38,714	54.9%	55,585	7.9%	64,464	-7.0%	41,575	44.2%
16	50,760	35,918	41.3%	49,061	3.5%	54,740	-7.3%	35,614	42.5%
17	96,752	66,583	45.3%	96,715	0.0%	102,140	-5.3%	70,956	36.4%
19	32,243	17,208	87.4%	30,847	4.5%	33,321	-3.2%	22,066	46.1%
21	35,043	25,000	40.2%	36,341	-3.6%	39,173	-10.5%	33,360	5.0%
22	106,307	66,339	60.2%	89,404	18.9%	114,535	-7.2%	66,510	59.8%
24 - Coral Way Limited	57,468	36,827	56.0%	36,237	58.6%	62,339	-7.8%	35,549	61.7%
27	178,022	121,070	47.0%	171,282	3.9%	183,477	-3.0%	140,425	26.8%
29 (*)	10,086	8,839	14.1%	10,684	-5.6%	10,453	-3.5%	7,552	33.6%
31 - BUSWAY LOCAL	30,560	17,326	76.4%	29,125	4.9%	31,078	-1.7%	16,953	80.3%
32	62,063	40,766	52.2%	56,027	10.8%	64,600	-3.9%	35,951	72.6%
33	47,411	27,731	71.0%	40,918	15.9%	48,492	-2.2%	26,034	82.1%
34 EXPRESS	29,916	19,772	51.3%	40,159	-25.5%	30,921	-3.3%	16,730	78.8%
35	66,502	37,946	75.3%	59,041	12.6%	70,384	-5.5%	44,116	50.7%
36	67,497	50,292	34.2%	61,606	9.6%	70,128	-3.8%	46,449	45.3%
37	92,553	62,040	49.2%	82,870	11.7%	97,215	-4.8%	67,699	36.7%
38	154,607	106,090	45.7%	167,379	-7.6%	163,745	-5.6%	113,842	35.8%
39 EXPRESS				17,853				4,656	
40	52,878	30,282	74.6%	40,497	30.6%	54,803	-3.5%	26,828	97.1%
42	27,205	16,759	62.3%	20,825	30.6%	29,080	-6.4%	17,847	52.4%
46 - LIBERTY CITY CONN. (*)	455	428	6.3%	814	-44.1%	466	-2.4%	518	-12.2%
51 - FLAGLER MAX	80,295	53,063	51.3%	62,186	29.1%	86,312	-7.0%	43,549	84.4%
52	33,073	20,583	60.7%	30,522	8.4%	34,683	-4.6%	22,331	48.1%
54	79,616	52,580	51.4%	72,125	10.4%	81,841	-2.7%	61,670	29.1%
55 MARLINS SHUTTLE									
56 (*)	8,053	5,389	49.4%	7,071	13.9%	7,702	4.6%	3,867	108.2%
57	10,151	5,514	84.1%	8,665	17.1%	10,892	-6.8%	5,699	78.1%
62	47,102	30,718	53.3%	46,582	1.1%	47,989	-1.8%	41,380	13.8%
71 (*)	16,745	10,784	55.3%	16,118	3.9%	18,122	-7.6%	8,965	86.8%
72 (*)	18,802	12,711	47.9%	18,433	2.0%	17,606	6.8%	10,295	82.6%

## METROBUS TOTAL MONTHLY BOARDINGS BY ROUTE

Route <b>Monthly Total</b>	Total Month	Total Month	Percent Change	Total Month	Percent Change	Total Month	Percent Change	Total Month	Percent Change
	Feb-23	Feb-22	YOY	Feb-20	Current vs Feb-20	Jan-23	MOM	Feb-21	YO2Y
73	72,937	44,293	64.7%	48,767	49.6%	77,908	-6.4%	38,278	90.5%
75	31,176	19,098	63.2%	31,994	-2.6%	31,970	-2.5%	24,172	29.0%
77	218,108	143,089	52.4%	174,833	24.8%	231,679	-5.9%	151,767	43.7%
79 STREET MAX	12,045	5,944	102.6%	7,228	66.6%	11,740	2.6%		
82 - WESTCHESTER CIRC. (*)	1,369	751	82.3%	1,482	-7.6%	1,516	-9.7%	749	82.8%
87	46,100	28,814	60.0%	33,273	38.6%	46,753	-1.4%	25,881	78.1%
88	63,406	41,093	54.3%	54,772	15.8%	67,486	-6.0%	42,047	50.8%
93 - BISCAYNE MAX	71,849	46,573	54.3%	66,684	7.7%	78,770	-8.8%	35,056	105.0%
95 EXPRESS	20,826	14,470	43.9%	33,796	-38.4%	20,493	1.6%	7,937	162.4%
99	40,851	28,968	41.0%	36,325	12.5%	43,344	-5.8%	30,250	35.0%
101 - A (*)	5,456	4,090	33.4%	4,114	32.6%	6,158	-11.4%	2,724	100.3%
102 - B	53,842	34,152	57.7%	42,683	26.1%	56,965	-5.5%	24,588	119.0%
103 - C				11,682				8,633	
104	22,855	12,645	80.7%	20,351	12.3%	23,827	-4.1%	8,832	158.8%
105 - E	36,265	24,199	49.9%	31,302	15.9%	38,420	-5.6%	26,458	37.1%
107 - G	51,122	32,296	58.3%	43,178	18.4%	52,375	-2.4%	29,032	76.1%
108 - H	15,019	9,829	52.8%	12,624	19.0%	16,970	-11.5%	11,013	36.4%
110 - J	81,273	51,054	59.2%	66,481	22.2%	87,873	-7.5%	66,686	21.9%
112 - L	233,408	151,662	53.9%	200,268	16.5%	250,898	-7.0%	181,971	28.3%
113 - M	15,388	13,625	12.9%	21,548	-28.6%	19,027	-19.1%	15,435	-0.3%
115 (*)	3,564	3,506	1.7%	4,334	-17.8%	4,241	-16.0%	4,491	-20.6%
119 - S	277,861	192,989	44.0%	242,257	14.7%	314,707	-11.7%	215,536	28.9%
120 - BEACH MAX	187,799	128,648	46.0%	170,942	9.9%	203,684	-7.8%	119,122	57.7%
132 TRI-RAIL (DORAL)	782	155	404.5%	312	150.6%	916	-14.6%	432	81.0%
135 (*)	36,114	20,949	72.4%	32,067	12.6%	35,340	2.2%	18,426	96.0%
136	2,778	2,454	13.2%	2,524	10.1%	3,410	-18.5%	1,249	122.4%
137 - WEST DADE CONN.	55,786	31,330	78.1%	41,167	35.5%	58,882	-5.3%	28,010	99.2%
150 - MIAMI BEACH AIRPORT FLYER	65,094	37,391	74.1%	51,651	26.0%	69,450	-6.3%	33,037	97.0%
155 - BISCAYNE GARDENS CIRCULATOR (*)	858	590	45.4%	881	-2.6%	988	-13.2%	585	46.7%
175 - NW MIAMI-DADE EXPRESS				661					
183	86,489	55,984	54.5%	77,570	11.5%	88,450	-2.2%	62,068	39.3%
195 EXPRESS - BROWARD BLVD				7,441					
196 EXPRESS - SHERIDAN ST				7,658					
200 - CUTLER BAY LOCAL	3,974	1,573	152.6%	3,984	-0.3%	3,825	3.9%	2,880	38.0%
202 - LITTLE HAITI CONN. (*)	1,747	2,727	-35.9%	3,200	-45.4%	1,889	-7.5%	3,219	-45.7%
204 KILLIAN KAT	14,284	8,366	70.7%	21,418	-33.3%	14,329	-0.3%		

## METROBUS TOTAL MONTHLY BOARDINGS BY ROUTE

Route	Total Month	Total Month	Percent Change	Total Month	Percent Change	Total Month	Percent Change	Total Month	Percent Change
<b>Monthly Total</b>	Feb-23	Feb-22	YOY	Feb-20	Current vs Feb-20	Jan-23	MOM	Feb-21	YO2Y
207 (7st) - LITTLE HAVANA CIRC	44,929	27,463	63.6%	38,127	17.8%	44,359	1.3%	21,031	113.6%
208 (8st) - LITTLE HAVANA CIRC	43,708	24,188	80.7%	35,018	24.8%	43,432	0.6%	19,656	122.4%
210 - SKYLAKE CIRC (*)	6,953	6,314	10.1%	7,033	-1.1%	8,239	-15.6%	7,593	-8.4%
211 - OVERTOWN CIRC. (*)	1,741	1,751	-0.6%	1,159	50.2%	1,982	-12.2%	956	82.1%
212 - SWEETWATER CIRC. (*)	533	600	-11.2%	295	80.7%	515	3.5%	269	98.1%
217 - BUNCHE PARK CIRC (*)	1,222	1,343	-9.0%	1,949	-37.3%	1,232	-0.8%	1,331	-8.2%
238 EAST/WEST CONN.	12,147	7,645	58.9%	8,987	35.2%	13,644	-11.0%	6,546	85.6%
241 TUTTLE LIMITED	8,174	1,880	334.8%			6,326	29.2%		
246 - NIGHT OWL	1,554	1,129	37.6%	2,641	-41.2%	1,787	-13.0%	2,354	-34.0%
248 - PRINCETON CIRCULATOR (*)	3,065	1,574	94.7%	2,690	13.9%	2,994	2.4%	1,657	85.0%
252 - CORAL REEF MAX	24,856	13,759	80.7%	19,325	28.6%	25,327	-1.9%	11,736	111.8%
254 - BROWNSVILLE CIRC. (*)	115	159	-27.7%	384	-70.1%	172	-33.1%	418	-72.5%
267 - LUDLAM LIMITED (*)	3,516	2,361	48.9%	2,978	18.1%	3,655	-3.8%	2,310	52.2%
272 SUNSET KAT (*)	8,033	5,984	34.2%	11,004	-27.0%	8,067	-0.4%	5,173	55.3%
277 - 7th AVENUE MAX	15,730	10,331	52.3%	13,669	15.1%	15,201	3.5%	9,261	69.9%
286 - NORTH POINTE CIRC. (*)	2,076	1,269	63.6%	2,145	-3.2%	1,995	4.1%	795	161.1%
287 - SAGA BAY MAX	7,353	4,065	80.9%	7,160	2.7%	6,592	11.5%	2,944	149.8%
288 - KENDALL CRUISER	9,334	8,156	14.4%	15,249	-38.8%	10,051	-7.1%		
295 EXPRESS - BROWARD BLVD - CIVIC CENTER				4,668					
296 EXPRESS - SHERIDAN ST - CIVIC CENTER				4,297					
297-27th AVENUE ORANGE MAX	25,039	16,697	50.0%	27,125	-7.7%	26,706	-6.2%	17,760	41.0%
301 DADE-MONROE EXPRESS (*)	24,067	20,933	15.0%	23,838	1.0%	24,625	-2.3%	24,853	-3.2%
302 CARD SOUND EXPRESS (*)	3,349	1,754	90.9%	2,236	49.8%	3,030	10.5%	2,147	56.0%
338 - WEEKEND EXPRESS	2,133	1,259	69.4%	2,191	-2.6%	2,230	-4.3%	1,143	86.6%
344 (*)	1,466	1,052	39.4%	1,919	-23.6%	1,553	-5.6%	1,524	-3.8%
500	2,123	344	517.2%	2,301	-7.7%	2,380	-10.8%	1,867	13.7%
836 EXPRESS	4,887	2,696	81.3%			4,972	-1.7%		
837 EXPRESS	2,210					2,185	1.1%		
12/21 WEEKEND INTERL.	16,696	13,378	24.8%	20,830	-19.8%	10,192	63.8%	15,094	10.6%
GREEN HILLS SHUTTLE (*)	16	20	-20.0%	36	-55.6%	20	-20.0%	27	-40.7%
KINGS CREEK SHUTTLE (*)	76	44	72.7%	52	46.2%	67	13.4%	30	153.3%
SIERRA LAKES SHUTTLE (*)	63	65	-3.1%	180	-65.0%	60	5.0%	76	-17.1%
ROBERT SHARP SHUTTLE (*)	90	76	18.4%	38	136.8%	70	28.6%	88	2.3%
AHEPA SHUTTLE (*)	65	69	-5.8%	83	-21.7%	64	1.6%	81	-19.8%
FEDERATION GARDENS SHUTTLE (*)	80	95	-15.8%	142	-43.7%	63	27.0%	68	17.6%
<b>Total</b>	<b>4,526,317</b>	<b>2,995,789</b>	<b>51.1%</b>	<b>4,123,083</b>	<b>9.8%</b>	<b>4,785,128</b>	<b>-5.4%</b>	<b>3,076,966</b>	<b>47.1%</b>



## YEAR-OVER-YEAR BUS RIDERSHIP BY ROUTE SERVICE TYPE

Boardings by Service Type and Route	Average Weekday	Average Weekday	Percent Change	Average Saturday	Average Saturday	Percent Change	Average Sunday	Average Sunday	Percent Change	Total Monthly	Total Monthly	Percent Change
	Feb-23	Feb-22	23 vs 22	Feb-23	Feb-22	23 vs 22	Feb-23	Feb-22	23 vs 22	Feb-23	Feb-22	23 vs 22
<b>Directly Operated Express Routes (1)</b>												
34 EXPRESS	1,575	989	59.3%							29,916	19,772	51.3%
39 EXPRESS												
95-EXPRESS	1,096	724	51.5%							20,826	14,470	43.9%
150-MIAMI BEACH AIRPORT FLYER	2,372	1,358	74.7%	2,341	1,347	73.8%	2,134	1,212	76.0%	65,094	37,391	74.1%
175 - NW MIAMI-DADE EXPRESS												
195 EXPRESS - BROWARD BLVD												
196 EXPRESS - SHERIDAN ST												
295 EXPRESS - BROWARD BLVD - CIVIC CENTER												
296 EXPRESS - SHERIDAN ST - CIVIC CENTER												
204 KAT-KILLIAN	752	418	79.7%							14,284	8,366	70.7%
288 KENDALL CRUISER	491	408	20.5%							9,334	8,156	14.4%
338 - WEEKEND EXPRESS				256	143	79.2%	222	172	29.1%	2,133	1,259	69.4%
836 EXPRESS	257	135	90.8%							4,887	2,696	81.3%
837 EXPRESS	116									2,210		
<b>Subtotal Express Routes</b>	<b>6,659</b>	<b>4,031</b>	<b>65.2%</b>	<b>2,597</b>	<b>1,490</b>	<b>74.3%</b>	<b>2,356</b>	<b>1,384</b>	<b>70.2%</b>	<b>148,684</b>	<b>92,110</b>	<b>61.4%</b>
<b>Percentage of All Bus Routes</b>	<b>3.5%</b>	<b>3.2%</b>		<b>2.3%</b>	<b>2.0%</b>		<b>2.8%</b>	<b>2.6%</b>		<b>3.3%</b>	<b>3.1%</b>	
<b>Contracted Routes</b>												
1	203	167	22.0%	176	111	58.6%	157	111	41.3%	5,401	4,224	27.9%
29	504	442	14.1%							10,086	8,839	14.1%
46 - LIBERTY CITY CONN.	23	21	6.3%							455	428	6.3%
56	403	269	49.4%							8,053	5,389	49.4%
71	763	481	58.6%	263	192	37.0%	109	99	10.1%	16,745	10,784	55.3%
72	781	526	48.4%	400	286	39.8%	398	262	51.9%	18,802	12,711	47.9%
82 - WESTCHESTER CIRC	61	30	101.5%	38	37	2.7%				1,369	751	82.3%
101 - A	250	187	34.0%	72	60	19.5%	40	28	42.9%	5,456	4,090	33.4%
115	150	141	6.5%	82	95	-13.2%	58	77	-24.2%	3,564	3,506	1.7%
155 - BISCAYNE GARDENS CIRC	43	30	45.4%							858	590	45.4%
202 - LITTLE HAITI CONN.	76	116	-34.0%	29	61	-53.5%	27	42	-36.7%	1,747	2,727	-35.9%
210 - SKYLAKE CIRC	311	266	16.6%	97	149	-34.7%	88	98	-10.2%	6,953	6,314	10.1%
211-OVERTOWN CIRC	87	88	-0.6%							1,741	1,751	-0.6%
212-SWEETWATER CIRC	27	30	-11.2%							533	600	-11.2%
217 - BUNCHE PARK CIRC	61	67	-9.0%							1,222	1,343	-9.0%
246 - NIGHT OWL	56	40	40.5%	44	51	-14.1%	65	32	103.1%	1,554	1,129	37.6%
248 - PRINCETON CIRCULATOR	153	79	94.7%							3,065	1,574	94.7%
254-BROWNSVILLE CIRC	6	8	-27.7%							115	159	-27.7%
286-NORTH POINTE CIRC	91	54	70.5%	63	50	26.6%				2,076	1,269	63.6%
344	73	53	39.4%							1,466	1,052	39.4%
<b>Subtotal Contracted Reg. &amp; Circ. Routes</b>	<b>4,122</b>	<b>3,093</b>	<b>33.3%</b>	<b>1,263</b>	<b>1,092</b>	<b>15.7%</b>	<b>942</b>	<b>749</b>	<b>25.8%</b>	<b>91,261</b>	<b>69,230</b>	<b>31.8%</b>
<b>Percentage of All Bus Routes</b>	<b>2.1%</b>	<b>2.5%</b>		<b>1.1%</b>	<b>1.5%</b>		<b>1.1%</b>	<b>1.4%</b>		<b>2.0%</b>	<b>2.3%</b>	

(1) Several express routes were suspended beginning at the end of March 2020, due to the SARS-CoV-2 pandemic, while other routes had alignment and schedule modifications made to them, in an ongoing effort to optimize service delivery..

## YEAR-OVER-YEAR BUS RIDERSHIP BY ROUTE SERVICE TYPE

Boardings by Service Type and Route	Average Weekday	Average Weekday	Percent Change	Average Saturday	Average Saturday	Percent Change	Average Sunday	Average Sunday	Percent Change	Total Monthly	Total Monthly	Percent Change
	Feb-23	Feb-22	23 vs 22	Feb-23	Feb-22	23 vs 22	Feb-23	Feb-22	23 vs 22	Feb-23	Feb-22	23 vs 22
<b>Contracted Express Routes</b>												
272 SUNSET-KAT	402	299	34.2%							8,033	5,984	34.2%
301-DADE MONROE EXPRESS	886	771	15.0%	815	742	9.8%	770	636	21.2%	24,067	20,933	15.0%
302-CARD SOUND EXPRESS	126	70	81.1%	96	42	128.7%	110	48	129.2%	3,349	1,754	90.9%
<b>Subtotal Contracted Express Routes</b>	<b>1,414</b>	<b>1,140</b>	<b>24.1%</b>	<b>910</b>	<b>784</b>	<b>16.1%</b>	<b>880</b>	<b>684</b>	<b>28.7%</b>	<b>35,449</b>	<b>28,671</b>	<b>23.6%</b>
<b>Percentage of All Bus Routes</b>	<b>0.7%</b>	<b>0.9%</b>		<b>0.8%</b>	<b>1.0%</b>		<b>1.0%</b>	<b>1.3%</b>		<b>0.8%</b>	<b>1.0%</b>	
<b>Limited Stop Routes</b>												
24-CORAL WAY LIMITED	2,374	1,476	60.9%	1,608	1,052	52.9%	1,187	777	52.9%	57,468	36,827	56.0%
51-FLAGLER MAX	4,226	2,653	59.3%							80,295	53,063	51.3%
79 STREET MAX	634	297	113.3%							12,045	5,944	102.6%
93 - BISCAYNE MAX	3,782	2,329	62.4%							71,849	46,573	54.3%
120 - BEACH MAX	7,433	5,237	41.9%	6,553	3,844	70.5%	4,070	2,134	90.8%	187,799	128,648	46.0%
241 TUTTLE LIMITED	302	76	296.2%	220	36	518.3%	310	53	487.3%	8,174	1,880	334.8%
252-CORAL REEF MAX	1,133	602	88.1%	420	244	72.5%	331	185	78.9%	24,856	13,759	80.7%
267-LUDLAM LIMITED (contracted)	176	118	48.9%							3,516	2,361	48.9%
277-7TH AVENUE MAX	828	517	60.3%							15,730	10,331	52.3%
287-SAGA BAY MAX	387	203	90.4%							7,353	4,065	80.9%
297-27th AVENUE ORANGE MAX	1,318	835	57.9%							25,039	16,697	50.0%
<b>Subtotal Limited Stop Routes</b>	<b>22,592</b>	<b>14,343</b>	<b>57.5%</b>	<b>8,800</b>	<b>5,174</b>	<b>70.1%</b>	<b>5,898</b>	<b>3,148</b>	<b>87.4%</b>	<b>494,124</b>	<b>320,148</b>	<b>54.3%</b>
<b>Percentage of All Bus Routes</b>	<b>11.8%</b>	<b>11.6%</b>		<b>7.7%</b>	<b>6.9%</b>		<b>6.9%</b>	<b>5.9%</b>		<b>10.9%</b>	<b>10.7%</b>	
<b>Directly Operated Free Routes</b>												
132 -TRI-RAIL DORAL	41	12	245.2%							782	155	404.5%
200-CUTLER BAY LOCAL	130	77	69.5%	117	34	239.3%	227	13	1646.2%	3,974	1,573	152.6%
<b>Subtotal Free Directly Operated Routes</b>	<b>171</b>	<b>89</b>	<b>93.2%</b>	<b>117</b>	<b>34</b>	<b>239.3%</b>	<b>227</b>	<b>13</b>	<b>1646.2%</b>	<b>4,756</b>	<b>1,728</b>	<b>175.2%</b>
<b>Percentage of All Bus Routes</b>	<b>0.1%</b>	<b>0.1%</b>		<b>0.1%</b>	<b>0.0%</b>		<b>0.3%</b>	<b>0.0%</b>		<b>0.1%</b>	<b>0.1%</b>	
<b>Shuttles</b>												
55-MARLINS SHUTTLE												
<b>Percentage of All Bus Routes</b>												
<b>Contractor-Operated Lifeline Routes</b>												
GREEN HILLS SHUTTLE	4	5	-20.0%							16	20	-20.0%
KINGS CREEK SHUTTLE	19	11	72.7%							76	44	72.7%
SIERRA LAKES SHUTTLE	16	16	-3.1%							63	65	-3.1%
ROBERT SHARP SHUTTLE	23	19	18.4%							90	76	18.4%
AHEPA SHUTTLE	16	17	-5.8%							65	69	-5.8%
FEDERATION GARDENS SHUTTLE				20	24	-15.8%				80	95	-15.8%
<b>Subtotal Contractor-Operated Lifeline Routes</b>	<b>78</b>	<b>69</b>	<b>13.1%</b>	<b>20</b>	<b>24</b>	<b>-15.8%</b>				<b>390</b>	<b>369</b>	<b>5.7%</b>
<b>Percentage of All Bus Routes</b>	<b>0.0%</b>	<b>0.1%</b>		<b>0.0%</b>	<b>0.0%</b>					<b>0.0%</b>	<b>0.0%</b>	
<b>All Other (Regular) Routes</b>												
	156,704	101,384	54.6%	99,882	66,312	50.6%	74,951	47,655	57.3%	3,751,653	2,483,533	51.1%
<b>Percentage of All Bus Routes</b>	<b>81.7%</b>	<b>81.7%</b>		<b>87.9%</b>	<b>88.5%</b>		<b>87.9%</b>	<b>88.9%</b>		<b>82.9%</b>	<b>82.9%</b>	
<b>Total Bus System</b>	<b>191,740</b>	<b>124,148</b>	<b>54.4%</b>	<b>113,588</b>	<b>74,909</b>	<b>51.6%</b>	<b>85,254</b>	<b>53,633</b>	<b>59.0%</b>	<b>4,526,317</b>	<b>2,995,789</b>	<b>51.1%</b>

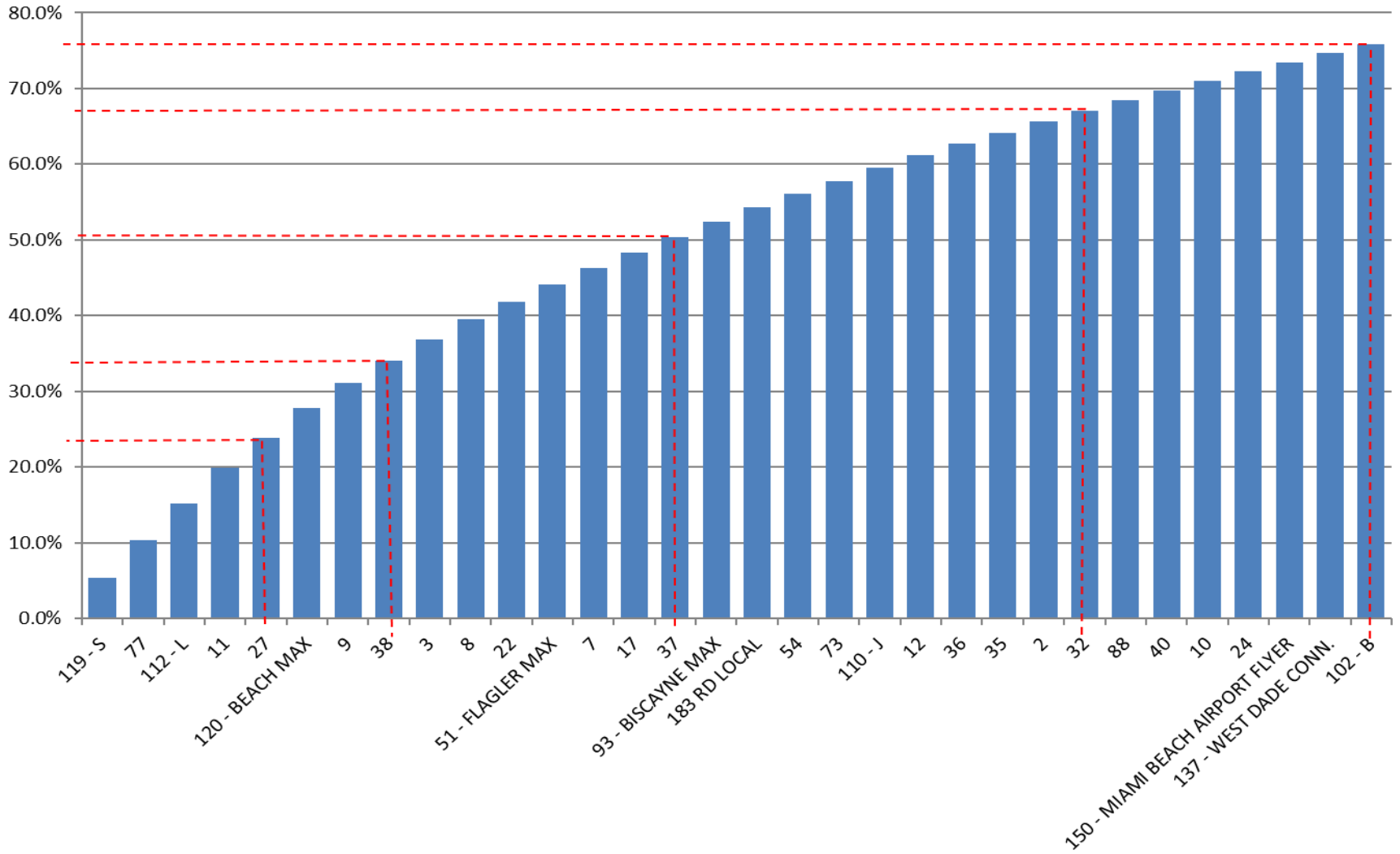
## Bus Routes as Ranked by Percentage of Average Weekday Ridership February 2023

Rank	Route	Average Weekday	Percent Share	Cumul Pct Share	Rank	Route	Average Weekday	Percent Share	Cumul Pct Share	Rank	Route	Average Weekday	Percent Share	Cumul Pct Share
1	119	10,414	5.4%	5.4%	36	16	2,014	1.1%	80.3%	71	836	257	0.1%	98.8%
2	77	9,332	4.9%	10.3%	37	62	1,953	1.0%	81.3%	72	101	250	0.1%	99.0%
3	112	9,303	4.9%	15.2%	38	207	1,869	1.0%	82.3%	73	1	203	0.1%	99.1%
4	11	9,152	4.8%	19.9%	39	21	1,844	1.0%	83.2%	74	267	176	0.1%	99.2%
5	27	7,601	4.0%	23.9%	40	208	1,783	0.9%	84.2%	75	248	153	0.1%	99.2%
6	120	7,433	3.9%	27.8%	41	99	1,712	0.9%	85.0%	76	115	150	0.1%	99.3%
7	9	6,326	3.3%	31.1%	42	19	1,697	0.9%	85.9%	77	136	146	0.1%	99.4%
8	38	5,809	3.0%	34.1%	43	135	1,684	0.9%	86.8%	78	200	130	0.1%	99.5%
9	3	5,253	2.7%	36.8%	44	34	1,575	0.8%	87.6%	79	302	126	0.1%	99.5%
10	8	5,076	2.6%	39.5%	45	105	1,540	0.8%	88.4%	80	837	116	0.1%	99.6%
11	22	4,579	2.4%	41.9%	46	52	1,457	0.8%	89.2%	81	286	91	0.0%	99.6%
12	51	4,226	2.2%	44.1%	47	75	1,447	0.8%	90.0%	82	211	87	0.0%	99.7%
13	7	4,115	2.1%	46.2%	48	297	1,318	0.7%	90.6%	83	500	79	0.0%	99.7%
14	17	4,086	2.1%	48.3%	49	31	1,213	0.6%	91.3%	84	202	76	0.0%	99.8%
15	37	3,885	2.0%	50.4%	50	42	1,185	0.6%	91.9%	85	344	73	0.0%	99.8%
16	93	3,782	2.0%	52.3%	51	252	1,133	0.6%	92.5%	86	217	61	0.0%	99.8%
17	183	3,679	1.9%	54.3%	52	95	1,096	0.6%	93.1%	87	82	61	0.0%	99.9%
18	54	3,422	1.8%	56.1%	53	104	997	0.5%	93.6%	88	246	56	0.0%	99.9%
19	73	3,337	1.7%	57.8%	54	301	886	0.5%	94.0%	89	155	43	0.0%	99.9%
20	110	3,291	1.7%	59.5%	55	277	828	0.4%	94.5%	90	132	41	0.0%	99.9%
21	12	3,155	1.6%	61.2%	56	72	781	0.4%	94.9%	91	212	27	0.0%	99.9%
22	36	2,876	1.5%	62.7%	57	71	763	0.4%	95.3%	92	46	23	0.0%	100.0%
23	35	2,869	1.5%	64.2%	58	204	752	0.4%	95.7%	93	RS	23	0.0%	100.0%
24	2	2,858	1.5%	65.6%	59	238	639	0.3%	96.0%	94	KC	19	0.0%	100.0%
25	32	2,789	1.5%	67.1%	60	79	634	0.3%	96.3%	95	AS	16	0.0%	100.0%
26	88	2,578	1.3%	68.4%	61	113	605	0.3%	96.6%	96	SL	16	0.0%	100.0%
27	40	2,445	1.3%	69.7%	62	108	592	0.3%	97.0%	97	254	6	0.0%	100.0%
28	10	2,436	1.3%	71.0%	63	57	534	0.3%	97.2%	98	GH	4	0.0%	100.0%
29	24	2,374	1.2%	72.2%	64	29	504	0.3%	97.5%	entirely contracted				
30	150	2,372	1.2%	73.5%	65	288	491	0.3%	97.7%					
31	137	2,355	1.2%	74.7%	66	56	403	0.2%	98.0%					
32	102	2,319	1.2%	75.9%	67	272	402	0.2%	98.2%					
33	87	2,177	1.1%	77.0%	68	287	387	0.2%	98.4%					
34	107	2,122	1.1%	78.1%	69	210	311	0.2%	98.5%					
35	33	2,073	1.1%	79.2%	70	241	302	0.2%	98.7%					
		<b>Total Boardings</b>		<b>191,740</b>			<b>100.0%</b>			<b>100.0%</b>				

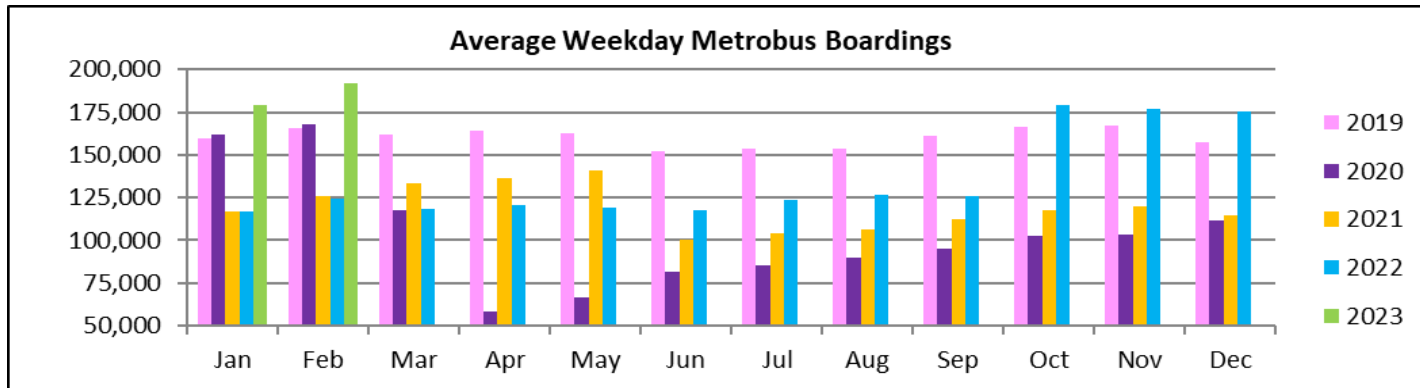
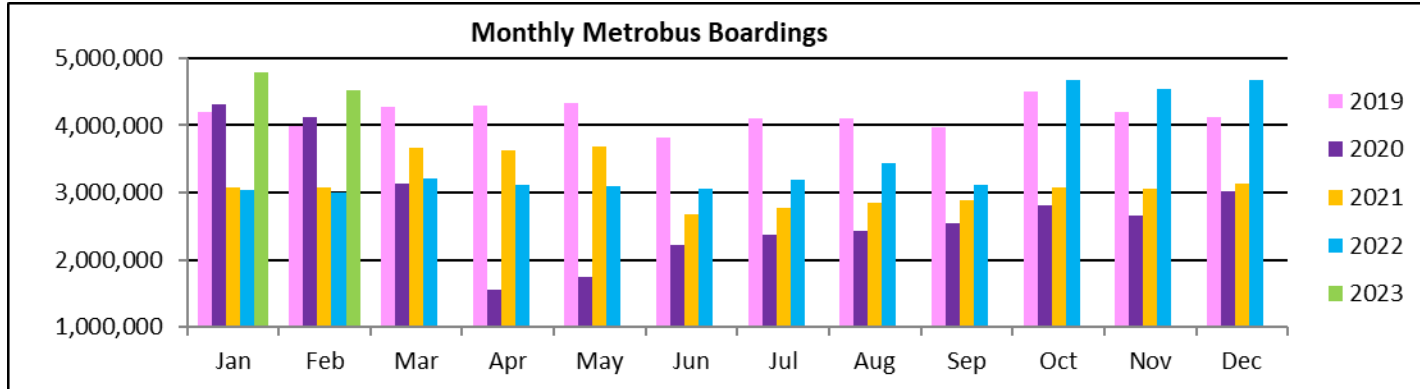
(1) Average weekday ridership rounded to the nearest unit.

(2) Includes the five Lifeline Shuttles that operate on weekdays: Ahepa, Green Hills, Kings Creek, Robert Sharp and Sierra Lakes.

**Bus - Cumulative Percentage Average Weekday Ridership Share  
Top 1/4, 1/3, 1/2, 2/3 and 3/4 of Routes**



## TOTAL MONTHLY AND AVERAGE WEEKDAY RIDERSHIP YEAR OVER YEAR COMPARISON CHARTS – METROBUS



**“TOP 5 / BOTTOM 5” BUS ROUTES AVERAGE WEEKDAY RIDERSHIP PERFORMANCE  
YEAR OVER YEAR COMPARISONS**

<b>Route</b>	<b>Feb-23</b>	<b>Feb-22</b>	<b>Absolute Delta (1)</b>	<b>Percent Delta (2)</b>
<b>77</b>	9,332	5,923	3,408	57.5%
<b>112 - L</b>	9,303	6,012	3,291	54.7%
<b>119 - S</b>	10,414	7,434	2,981	40.1%
<b>11</b>	9,152	6,272	2,880	45.9%
<b>27</b>	7,601	5,061	2,540	50.2%
<b>202 - LITTLE HAITI CONN. (*)</b>	76	116	-39	-34.0%
<b>217 - BUNCHE PARK CIRC (*)</b>	61	67	-6	-9.0%
<b>212 - SWEETWATER CIRC. (*)</b>	27	30	-3	-11.2%
<b>254 - BROWNSVILLE CIRC. (*)</b>	6	8	-2	-27.7%
<b>211 - OVERTOWN CIRC. (*)</b>	87	88	-1	-0.6%

- (1) Averages rounded to the nearest boarding, data as reported by farebox (NFS) and/or automatic passenger counter (APC) system, depending on year; Lifeline shuttles excluded.
- (2) As a result of the SARS-CoV-2 pandemic, rides were fare-free beginning March 22, 2020. Fares were reinstated June 1, 2021, and ridership data from the farebox rather than the APC system is utilized from that date thru the end of September 2022. Beginning October 1, 2022, ridership is again reported from the APC system coupled with a new enhanced sensor system.
- (\*) Contracted route.

## METROBUS PARKING PATRONAGE SUMMARY February 2023

PARK-RIDE LOT	ACTUAL AVAILABLE SPACES	ACTUAL OCCUPANCY	PERCENT OCCUPANCY
Transitway / SW 152nd St	200	158	79%
Transitway / SW 168th St (*)	149	0	0%
Transitway / SW 200th Street (effective February 2020)	100	26	26%
Transitway / SW 112 Ave (Target)	450	139	31%
Transitway / SW 244th St	95	65	68%
Transitway / SW 296th St	139	16	12%
Transitway / SW 344th St	248	162	65%
Coral Reef Drive 117/ Turnpike	95	96	101%
Golden Glades Facility	2,150	332	15%
Hammocks Town Center (SW 152 Ave / SW 104 St)	50	18	36%
Kendall Dr./SW 127th Ave	161	13	8%
West Kendall Transit Term (Kendall Dr / SW162 Ave)	40	17	43%
NW 7th Avenue Transit Village (NW 7 Ave / NW 62 St)	25	19	76%
Miami Gardens Dr. / NW 73rd Ave	136	0	0%
Dolphin Station (effective Mar 2020)	348	69	20%
Tamiami Station (eff 11-2022)	442	35	8%
I-75 / Miami Gardens Dr (**)	298	0	0%
<b>TOTAL</b>	<b>5,126</b>	<b>1,165</b>	<b>23%</b>

(\*) Closed for construction beginning January 2022

(\*\*) Route 175 Suspended 3/27/2020

# Metrorail





## METRORAIL AVERAGE WEEKDAY BOARDINGS BY STATION (†)

Weekdays	Average Weekday	Average Weekday	Percent Change	Average Weekday	Percent Change	Average Weekday	Percent Change	Average Weekday	Percent Change
STATIONS	Feb-23	Feb-22	YOY	Feb-20	Current vs Feb-20	Jan-23	MOM	Feb-21	YO2Y
ALLAPATTAH	1,660	1,270	30.7%	1,942	-14.5%	1,577	5.2%	1,245	33.3%
BRICKELL	5,386	3,972	35.6%	6,529	-17.5%	5,011	7.5%	3,974	35.5%
BROWNSVILLE	719	597	20.5%	862	-16.6%	701	2.6%	707	1.8%
CIVIC CENTER	4,190	3,266	28.3%	6,143	-31.8%	3,728	12.4%	2,797	49.8%
COCONUT GROVE	1,223	1,212	0.9%	1,795	-31.9%	1,417	-13.6%	1,020	19.9%
CULMER	1,051	876	20.0%	1,392	-24.5%	968	8.6%	904	16.3%
DADELAND NORTH	3,993	3,123	27.9%	5,926	-32.6%	3,688	8.3%	3,312	20.5%
DADELAND SOUTH	4,556	3,502	30.1%	7,150	-36.3%	4,265	6.8%	3,179	43.3%
DOUGLAS ROAD (*)	2,121	2,439	-13.0%	3,624	-41.5%	2,714	-21.8%	1,434	47.9%
DR. MARTIN LUTHER KING, JR.	848	755	12.4%	1,157	-26.7%	790	7.4%	806	5.3%
EARLINGTON HEIGHTS	1,354	1,051	28.8%	1,662	-18.5%	1,305	3.7%	1,019	32.8%
GOVERNMENT CENTER	7,024	5,218	34.6%	10,557	-33.5%	6,247	12.4%	3,517	99.7%
HIALEAH	1,219	903	35.1%	1,253	-2.7%	844	44.5%	721	69.1%
MIAMI INTERNATIONAL AIRPORT	1,323	998	32.6%	1,711	-22.7%	1,301	1.7%	712	85.8%
NORTHSIDE	1,358	1,027	32.3%	1,476	-8.0%	1,228	10.6%	1,104	23.0%
OKEECHOBEE	927	685	35.5%	1,164	-20.3%	869	6.8%	690	34.5%
OVERTOWN / ARENA	1,663	1,143	45.5%	2,274	-26.9%	1,509	10.2%	782	112.8%
PALMETTO	1,293	952	35.9%	1,543	-16.2%	1,193	8.4%	819	57.9%
SANTA CLARA	721	485	48.7%	812	-11.2%	650	10.9%	521	38.4%
SOUTH MIAMI	2,111	1,647	28.1%	3,015	-30.0%	1,936	9.0%	1,140	85.1%
TRI-RAIL	1,151	841	36.9%	1,207	-4.6%	1,083	6.3%	794	45.0%
UNIVERSITY	2,165	1,570	37.9%	2,784	-22.3%	1,665	30.0%	849	155.1%
VIZCAYA	1,190	923	29.0%	1,390	-14.3%	1,099	8.4%	761	56.3%
<b>TOTAL</b>	<b>49,246</b>	<b>38,454</b>	<b>28.1%</b>	<b>67,367</b>	<b>-26.9%</b>	<b>45,784</b>	<b>7.6%</b>	<b>32,807</b>	<b>50.1%</b>

(†) In this table and those which follow, "YOY" stands for "year-over-year", "MOM" for "month-over-month" and "YO2Y" for "year over two years", i.e., current month vs 12 months prior, one month prior and 24 months prior, respectively.

(††) Due to effects from the SARS-CoV-2 pandemic; rides were fare-free beginning March 22, 2020; fares were reinstated on June 1, 2021, in part accounting for the drop in ridership from May 2021.

(\*) There was data for only the first day of February 2023 at Douglas Road Station, due to construction.

## METRORAIL AVERAGE SATURDAY BOARDINGS BY STATION

<b>Saturdays</b>	Average Saturday	Average Saturday	Percent Change	Average Saturday	Percent Change	Average Saturday	Percent Change	Average Saturday	Percent Change
STATIONS	Feb-23	Feb-22	YOY	Feb-20	Current vs Feb-20	Jan-23	MOM	Feb-21	YO2Y
ALLAPATTAH	904	783	15.5%	1,051	-14.0%	896	0.9%	821	10.1%
BRICKELL	2,433	2,266	7.4%	2,811	-13.5%	2,540	-4.2%	2,558	-4.9%
BROWNSVILLE	454	382	18.9%	520	-12.7%	416	9.1%	517	-12.2%
CIVIC CENTER	759	618	22.9%	959	-20.9%	657	15.6%	692	9.8%
COCONUT GROVE	779	753	3.4%	928	-16.1%	773	0.8%	685	13.7%
CULMER	488	461	5.7%	721	-32.3%	433	12.7%	588	-17.0%
DADELAND NORTH	1,407	1,371	2.6%	1,994	-29.4%	1,372	2.6%	1,786	-21.2%
DADELAND SOUTH	1,924	1,688	13.9%	2,625	-26.7%	1,891	1.7%	1,991	-3.4%
DOUGLAS ROAD		1,176		1,319		1,162		722	
DR. MARTIN LUTHER KING, JR.	480	426	12.8%	625	-23.1%	466	3.0%	543	-11.5%
EARLINGTON HEIGHTS	730	657	11.1%	935	-22.0%	698	4.5%	684	6.7%
GOVERNMENT CENTER	2,819	2,659	6.0%	4,262	-33.9%	2,834	-0.5%	1,970	43.1%
HIALEAH	602	469	28.3%	583	3.2%	395	52.2%	448	34.3%
MIAMI INTERNATIONAL AIRPORT	961	828	16.1%	1,330	-27.8%	969	-0.9%	662	45.2%
NORTHSIDE	825	672	22.7%	878	-6.1%	720	14.6%	858	-3.8%
OKEECHOBEE	343	328	4.7%	408	-16.0%	319	7.6%	336	2.2%
OVERTOWN / ARENA	568	500	13.5%	678	-16.3%	587	-3.3%	442	28.5%
PALMETTO	427	337	26.6%	458	-6.8%	382	11.8%	351	21.7%
SANTA CLARA	363	276	31.8%	422	-13.9%	325	11.8%	321	13.3%
SOUTH MIAMI	1,004	816	23.0%	1,256	-20.1%	969	3.7%	673	49.3%
TRI-RAIL	565	387	46.0%	614	-8.0%	519	8.9%	469	20.5%
UNIVERSITY	837	612	36.7%	714	17.2%	525	59.3%	438	91.0%
VIZCAYA	511	494	3.4%	622	-17.9%	500	2.1%	457	11.9%
<b>TOTAL</b>	<b>20,180</b>	<b>18,958</b>	<b>6.4%</b>	<b>26,714</b>	<b>-24.5%</b>	<b>20,346</b>	<b>-0.8%</b>	<b>19,008</b>	<b>6.2%</b>

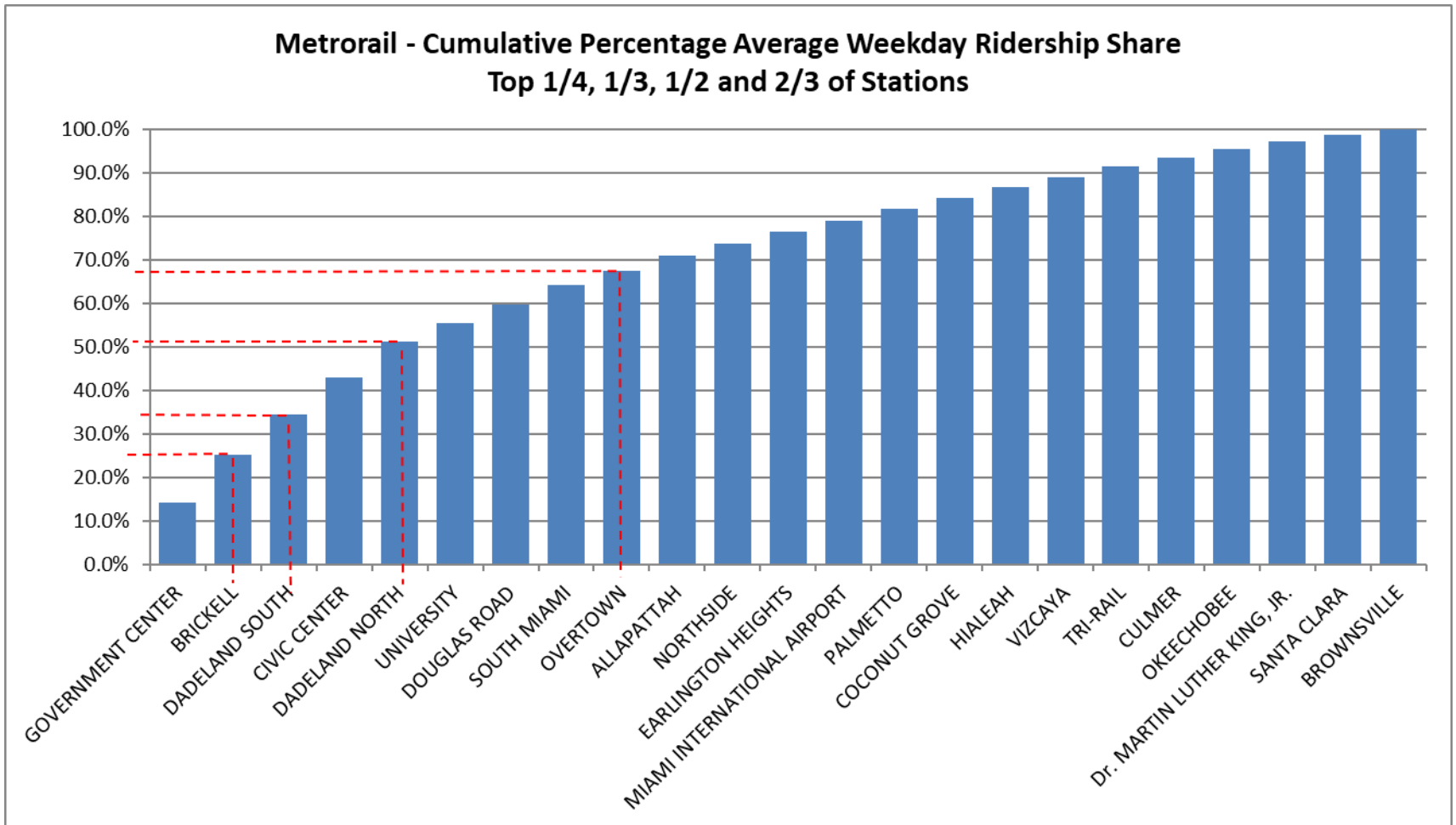
## METRORAIL AVERAGE SUNDAY BOARDINGS BY STATION

<b>Sundays</b>	Average Sunday	Average Sunday	Percent Change	Average Sunday	Percent Change	Average Sunday	Percent Change	Average Sunday	Percent Change
<b>STATIONS</b>	Feb-23	Feb-22	YOY	Feb-20	Current vs Feb-20	Jan-23	MOM	Feb-21	YO2Y
ALLAPATTAH	643	560	14.9%	791	-18.7%	643	0.0%	639	0.6%
BRICKELL	1,886	1,780	6.0%	2,379	-20.7%	1,961	-3.8%	2,014	-6.3%
BROWNSVILLE	290	259	12.2%	406	-28.5%	296	-1.9%	413	-29.6%
CIVIC CENTER	563	487	15.6%	791	-28.9%	532	5.8%	579	-2.8%
COCONUT GROVE	543	597	-9.0%	838	-35.2%	599	-9.3%	516	5.2%
CULMER	326	350	-6.7%	616	-47.1%	328	-0.5%	496	-34.2%
DADELAND NORTH	990	1,044	-5.2%	1,685	-41.3%	1,093	-9.4%	1,329	-25.5%
DADELAND SOUTH	1,486	1,278	16.3%	2,210	-32.8%	1,403	5.9%	1,559	-4.7%
DOUGLAS ROAD		847		1,090		860		451	
DR. MARTIN LUTHER KING, JR.	345	328	5.4%	506	-31.8%	316	9.2%	441	-21.6%
EARLINGTON HEIGHTS	553	484	14.2%	799	-30.8%	527	5.0%	542	2.0%
GOVERNMENT CENTER	2,371	2,338	1.4%	4,044	-41.4%	2,603	-8.9%	1,624	46.0%
HIALEAH	429	335	27.8%	472	-9.2%	289	48.5%	323	32.9%
MIAMI INTERNATIONAL AIRPORT	1,010	794	27.1%	1,343	-24.8%	1,033	-2.2%	625	61.5%
NORTHSIDE	622	495	25.6%	653	-4.8%	563	10.5%	679	-8.5%
OKEECHOBEE	220	161	36.5%	273	-19.6%	195	12.6%	231	-4.8%
OVERTOWN / ARENA	431	445	-3.0%	544	-20.8%	446	-3.3%	394	9.5%
PALMETTO	247	236	4.9%	336	-26.5%	239	3.3%	208	18.9%
SANTA CLARA	240	180	33.2%	280	-14.2%	222	7.9%	232	3.2%
SOUTH MIAMI	703	633	11.1%	987	-28.7%	694	1.3%	545	28.9%
TRI-RAIL	403	314	28.2%	528	-23.6%	358	12.4%	367	10.0%
UNIVERSITY	555	434	27.8%	608	-8.8%	467	18.8%	331	67.5%
VIZCAYA	395	383	3.2%	524	-24.6%	382	3.4%	352	12.2%
<b>TOTAL</b>	<b>15,248</b>	<b>14,758</b>	<b>3.3%</b>	<b>22,701</b>	<b>-32.8%</b>	<b>16,048</b>	<b>-5.0%</b>	<b>14,887</b>	<b>2.4%</b>

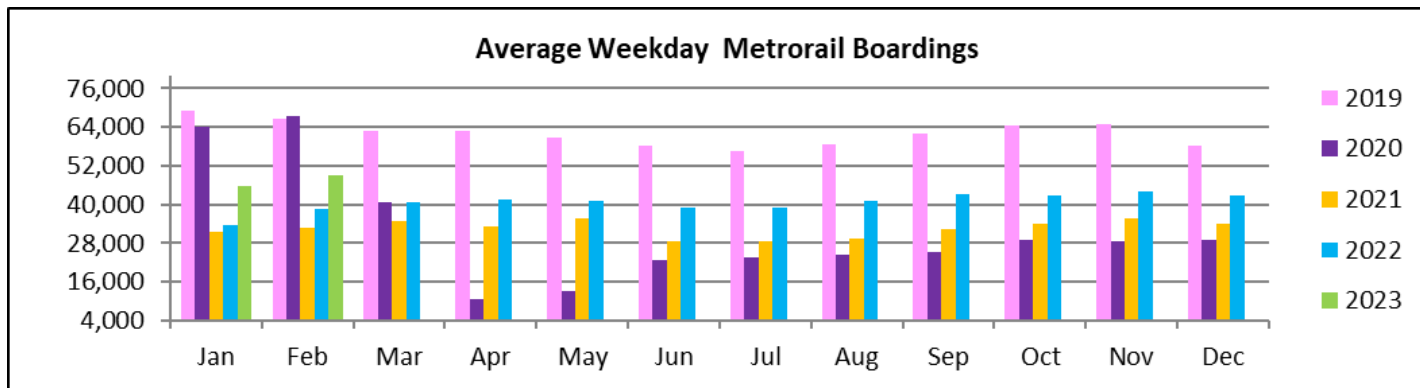
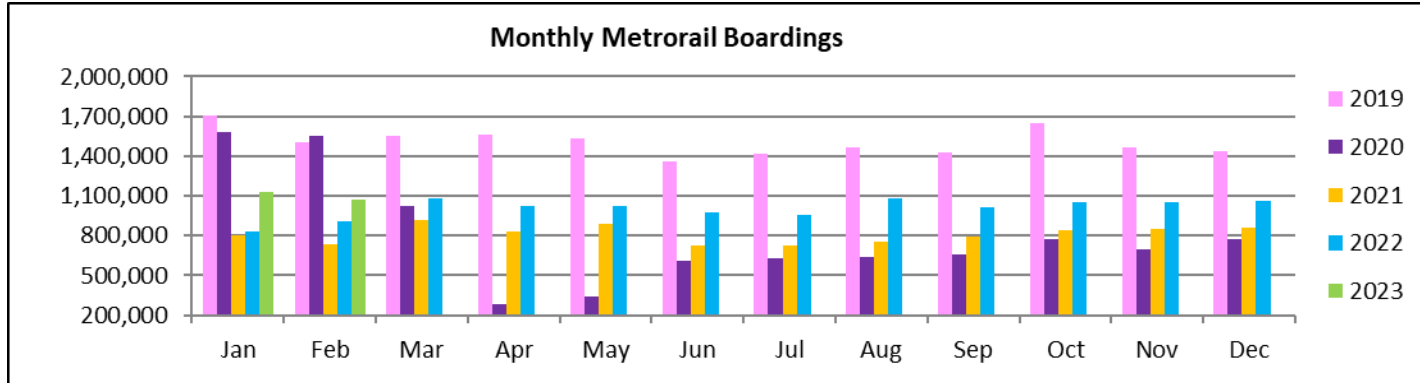
## METRORAIL TOTAL MONTHLY BOARDINGS BY STATION

<b>Monthly Totals</b>	Total Month	Total Month	Percent Change	Total Month	Percent Change	Total Month	Percent Change	Total Month	Percent Change
<b>STATIONS</b>	Feb-23	Feb-22	YOY	Feb-20	Current vs Feb-20	Jan-23	MOM	Feb-21	YO2Y
ALLAPATTAH	39,099	30,871	26.7%	46,868	-16.6%	40,489	-3.4%	28,409	37.6%
BRICKELL	123,428	95,769	28.9%	152,259	-18.9%	126,195	-2.2%	90,514	36.4%
BROWNSVILLE	17,183	14,497	18.5%	21,285	-19.3%	18,173	-5.4%	16,514	4.1%
CIVIC CENTER	87,916	69,782	26.0%	128,921	-31.8%	81,773	7.5%	55,925	57.2%
COCONUT GROVE	29,819	29,655	0.6%	43,580	-31.6%	36,194	-17.6%	23,307	27.9%
CULMER	23,937	20,824	14.9%	33,497	-28.5%	23,845	0.4%	20,702	15.6%
DADELAND NORTH	87,897	72,385	21.4%	132,894	-33.9%	88,217	-0.4%	72,434	21.3%
DADELAND SOUTH	103,434	81,960	26.2%	162,416	-36.3%	104,398	-0.9%	71,906	43.8%
DOUGLAS ROAD	2,121	56,905	-96.3%	82,141	-97.4%	66,291	-96.8%	30,720	-93.1%
DR. MARTIN LUTHER KING, JR.	20,073	18,092	10.9%	27,980	-28.3%	20,382	-1.5%	18,561	8.1%
EARLINGTON HEIGHTS	31,901	25,593	24.6%	40,697	-21.6%	33,137	-3.7%	23,391	36.4%
GOVERNMENT CENTER	158,292	124,465	27.2%	243,414	-35.0%	155,609	1.7%	78,039	102.8%
HIALEAH	28,253	21,326	32.5%	29,516	-4.3%	20,957	34.8%	16,159	74.8%
MIAMI INTERNATIONAL AIRPORT	34,166	26,447	29.2%	46,115	-25.9%	37,559	-9.0%	18,131	88.4%
NORTHSIDE	32,674	25,261	29.3%	36,127	-9.6%	31,935	2.3%	26,183	24.8%
OKEECHOBEE	20,545	15,638	31.4%	26,026	-21.1%	20,601	-0.3%	14,763	39.2%
OVERTOWN / ARENA	36,643	26,745	37.0%	49,911	-26.6%	35,950	1.9%	17,508	109.3%
PALMETTO	28,159	21,382	31.7%	33,944	-17.0%	27,863	1.1%	17,122	64.5%
SANTA CLARA	16,618	11,558	43.8%	19,245	-13.7%	16,266	2.2%	11,641	42.8%
SOUTH MIAMI	48,455	38,765	25.0%	69,412	-30.2%	48,314	0.3%	25,570	89.5%
TRI-RAIL	26,648	19,584	36.1%	29,120	-8.5%	26,812	-0.6%	17,775	49.9%
UNIVERSITY	48,478	35,654	36.0%	61,253	-20.9%	39,197	23.7%	18,530	161.6%
VIZCAYA	27,052	22,004	22.9%	32,497	-16.8%	27,183	-0.5%	16,988	59.2%
<b>TOTAL</b>	<b>1,072,791</b>	<b>905,162</b>	<b>18.5%</b>	<b>1,549,118</b>	<b>-30.7%</b>	<b>1,127,340</b>	<b>-4.8%</b>	<b>730,792</b>	<b>46.8%</b>

# METRORAIL CUMULATIVE PERCENTAGE RIDERSHIP SHARE



## TOTAL MONTHLY AND AVERAGE WEEKDAY RIDERSHIP YEAR OVER YEAR COMPARISON CHARTS – METRORAIL



**“TOP 5 / BOTTOM 5” RAIL STATIONS AVERAGE WEEKDAY RIDERSHIP PERFORMANCE  
YEAR OVER YEAR COMPARISONS**

<b>Station</b>	<b>Feb-23</b>	<b>Feb-22</b>	<b>Absolute Delta (1)</b>	<b>Percent Delta</b>
GOVERNMENT CENTER	7,024	5,218	1,806	34.6%
BRICKELL	5,386	3,972	1,414	35.6%
DADELAND SOUTH	4,556	3,502	1,054	30.1%
CIVIC CENTER	4,190	3,266	924	28.3%
DADELAND NORTH	3,993	3,123	870	27.9%
DOUGLAS ROAD	2,121	2,439	-318	-13.0%
COCONUT GROVE	1,223	1,212	11	0.9%
Dr. MARTIN LUTHER KING, JR.	848	755	93	12.4%
BROWNSVILLE	719	597	122	20.5%
CULMER	1,051	876	175	20.0%

- (1) Averages rounded to the nearest boarding.
- (2) As a result of the SARS-CoV-2 pandemic, rides were fare-free beginning March 22, 2020; nearly all rail stations continued reporting YOY gains in February 2023, as February 2022 still showed clear reduction effects on ridership from the SARS-CoV-2 pandemic. Fares were reinstated June 1, 2021, and ridership data from the faregate system rather than the video camera counter system is utilized from that date going forward.

## METRORAIL PARKING PATRONAGE SUMMARY February 2023

PARK-RIDE LOT	ACTUAL CAPACITY (1)	ACTUAL OCCUPANCY (2)	PERCENT OCCUPANCY
DADELAND SOUTH	1,260	863	68%
DADELAND NORTH	1,963	861	44%
SOUTH MIAMI	1,081	209	19%
UNIVERSITY	260	171	66%
DOUGLAS ROAD	222	106	48%
COCONUT GROVE	100	43	43%
VIZCAYA	120	43	36%
CULMER	40	9	23%
SANTA CLARA	61	41	67%
ALLAPATTAH	74	7	9%
EARLINGTON HEIGHTS	361	124	34%
BROWNSVILLE	100	69	69%
DR. MARTIN LUTHER KING JR. (MDT) (*)	62	0	0%
DR. MARTIN LUTHER KING JR. (GARAGE) (*)	631	0	0%
NORTHSIDE	100	71	71%
HIALEAH	338	40	12%
OKEECHOBEE	1,398	133	10%
PALMETTO	700	143	20%
<b>TOTAL</b>	<b>8,871</b>	<b>2,931</b>	<b>33%</b>

- (1) Number of spaces could vary each week; shown are available spaces during final week of month, as submitted by DTPW Safety & Security office.  
(2) All sampled occupancy data provided by DTPW Safety & Security office; calculations are revisions to those submitted by that entity.  
(3) Daily averages rounded to nearest unit, with fewer counts at some stations due to shortage of DTPW Safety & Security office staff; calculations are based on sampled counted days only per raw data submitted, with resulting average daily occupancy shown.  
(\*) Closed throughout the month, per the DTPW Safety & Security office.



# Metromover



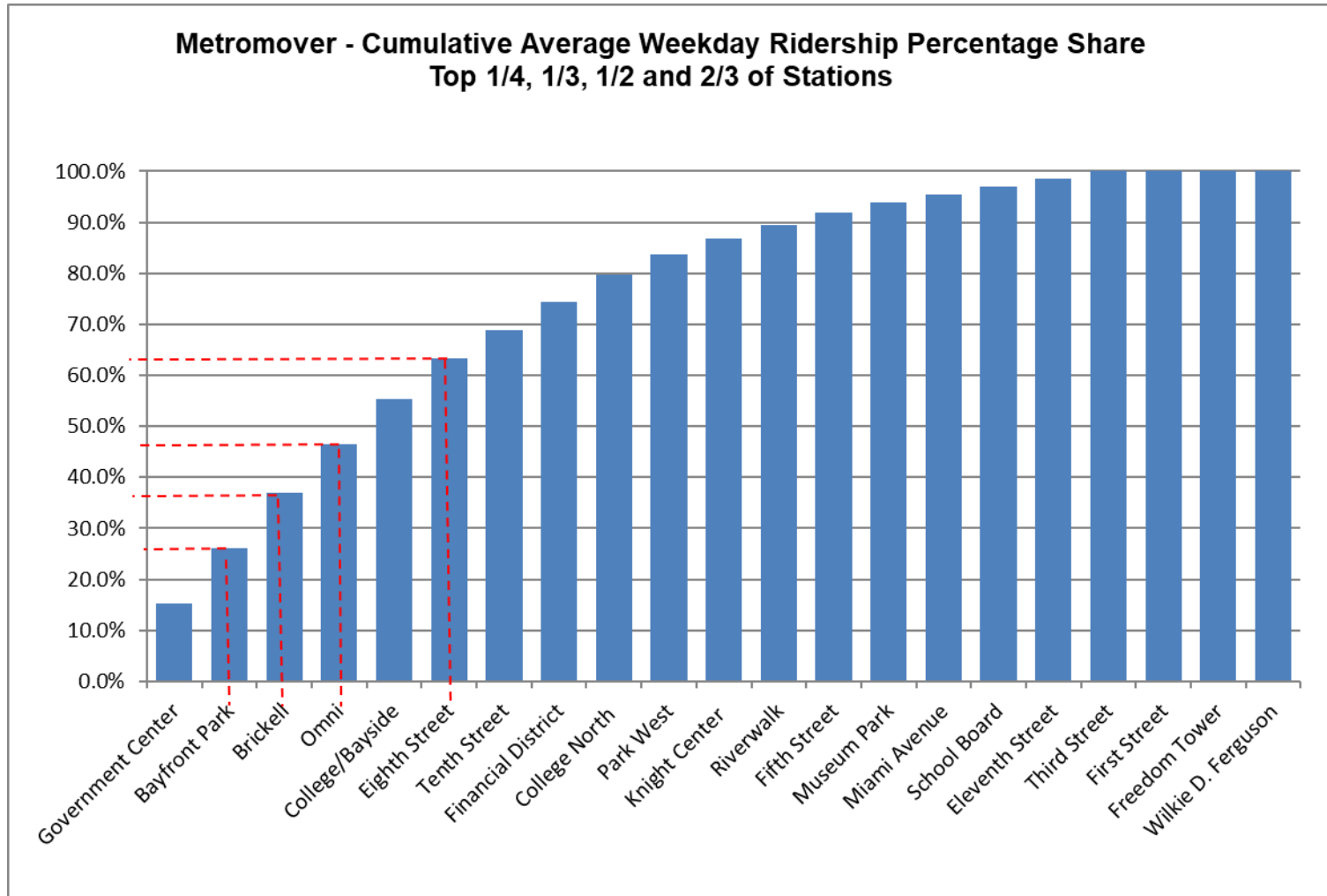
## METROMOVER MONTHLY AND AVERAGE DAILY BOARDINGS BY STATION

	Average Weekday	Average Weekday	Percent Change	Average Saturday	Average Saturday	Percent Change	Average Sunday	Average Sunday	Percent Change	Total Monthly	Total Monthly	Percent Change
STATIONS	Feb-23	Feb-22	23 vs 22	Feb-23	Feb-22	23 vs 22	Feb-23	Feb-22	23 vs 22	Feb-23	Feb-22	23 vs 22
School Board	317	631	-49.8%	303	540	-43.9%	287	476	-39.8%	8,729	16,693	-47.7%
Omni	1,880	1,726	9.0%	1,481	1,663	-10.9%	1,365	1,433	-4.8%	48,573	46,698	4.0%
Museum Park	375	207	81.1%	714	345	106.9%	480	316	51.8%	12,346	6,923	78.3%
Eleventh Street	297	260	14.1%	292	233	25.2%	277	169	63.4%	8,200	6,761	21.3%
Park West	786	478	64.7%	678	487	39.3%	564	416	35.6%	20,623	13,041	58.1%
<b>Freedom Tower</b>												
Government Center	3,003	2,173	38.2%	1,982	1,669	18.8%	1,903	1,639	16.1%	30,261	56,258	-46.2%
Miami Avenue	321	291	10.3%	291	231	26.2%	249	241	3.4%	4,595	7,684	-40.2%
Third Street	275	276	-0.1%	243	246	-1.1%	219	224	-2.2%	7,287	7,359	-1.0%
Knight Center	627	439	43.0%	429	365	17.4%	336	317	5.8%	15,432	11,353	35.9%
Bayfront Park	2,147	1,736	23.7%	1,595	1,515	5.3%	1,465	2,121	-30.9%	54,832	49,069	11.7%
First Street		943			879			895			25,780	
College/Bayside	1,771	1,252	41.4%	1,524	1,130	34.8%	1,281	996	28.6%	46,237	33,223	39.2%
College North	1,029	614	67.5%	676	439	54.1%	557	348	60.2%	25,194	15,259	65.1%
Wilkie D. Ferguson		863			714			657			22,553	
Riverwalk	514	409	25.7%	364	386	-5.7%	347	303	14.3%	12,931	10,795	19.8%
Fifth Street	498	360	38.2%	429	254	68.9%	326	275	18.6%	12,906	9,195	40.4%
Eighth Street	1,577	1,404	12.3%	1,561	1,429	9.3%	1,213	1,210	0.2%	42,397	38,430	10.3%
Tenth Street	1,099	658	67.1%	843	585	44.0%	725	522	38.9%	28,030	17,449	60.6%
Brickell	2,125	1,917	10.9%	1,712	1,679	2.0%	1,478	1,548	-4.5%	54,744	50,952	7.4%
Financial District	1,083	812	33.3%	634	534	18.6%	539	567	-5.0%	25,947	20,493	26.6%
<b>TOTAL</b>	<b>19,724</b>	<b>17,448</b>	<b>13.0%</b>	<b>15,750</b>	<b>15,322</b>	<b>2.8%</b>	<b>13,606</b>	<b>14,671</b>	<b>-7.3%</b>	<b>459,264</b>	<b>465,968</b>	<b>-1.4%</b>

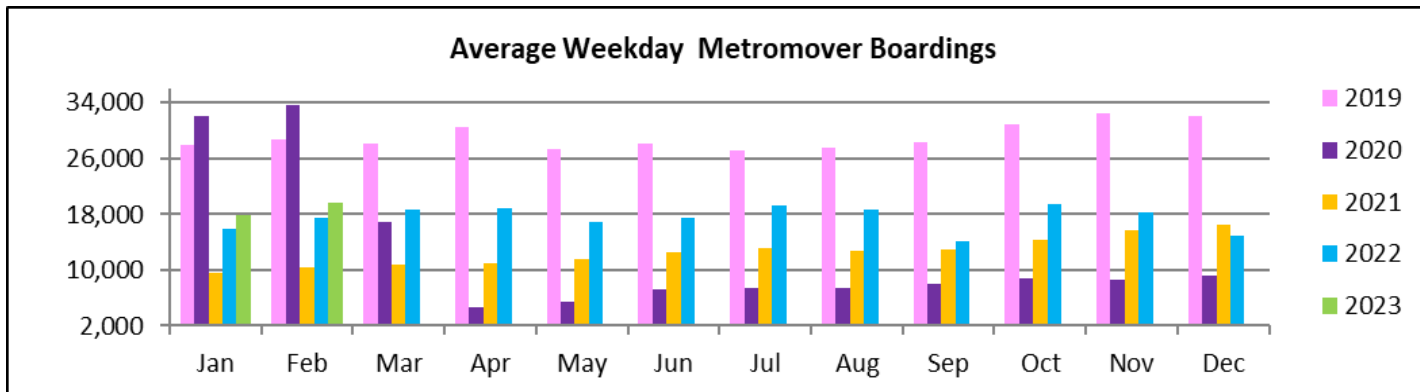
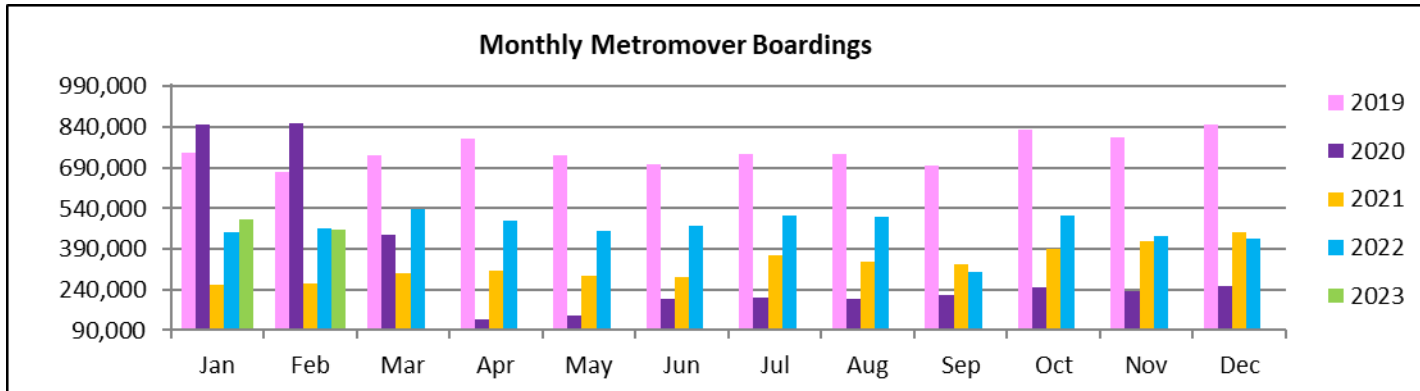
(1) Freedom Tower Station was closed for construction.

(2) First Street and Wilkie D. Ferguson stations had no ridership data Feb-23, due to the installation of a new enhanced automatic passenger counter system.

# METROMOVER CUMULATIVE PERCENTAGE RIDERSHIP SHARE



## TOTAL MONTHLY AND AVERAGE WEEKDAY RIDERSHIP YEAR OVER YEAR COMPARISON CHARTS – METROMOVER



**“TOP 5 / BOTTOM 5” MOVER STATIONS AVERAGE WEEKDAY RIDERSHIP PERFORMANCE  
YEAR OVER YEAR COMPARISONS**

<b>Station</b>	<b>Feb-23</b>	<b>Feb-22</b>	<b>Absolute Delta (1)</b>	<b>Percent Delta</b>
Government Center	3,003	2,173	829	38.2%
College/Bayside	1,771	1,252	519	41.4%
Tenth Street	1,099	658	441	67.1%
College North	1,029	614	414	67.5%
Bayfront Park	2,147	1,736	411	23.7%
School Board	317	631	-314	-49.8%
Third Street	275	276	0	-0.1%
Miami Avenue	321	291	30	10.3%
Eleventh Street	297	260	37	14.1%
Riverwalk	514	409	105	25.7%

(1) Averages rounded to the nearest boarding.

## Special Transportation Services

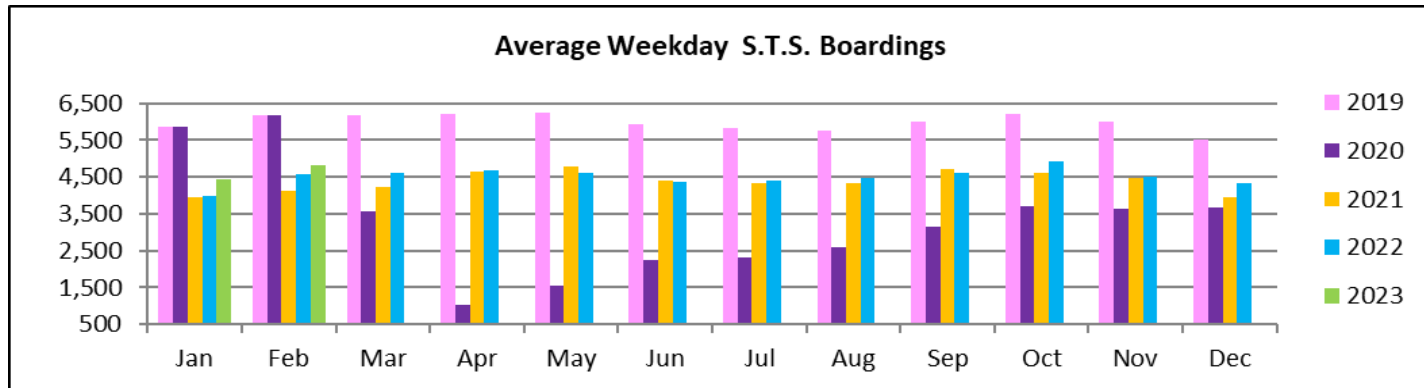
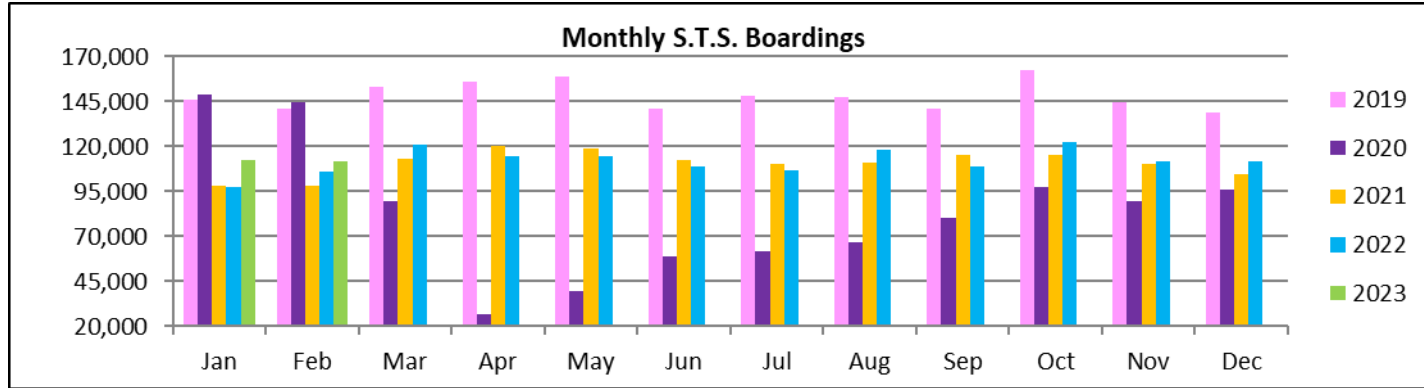


**STS MONTHLY AND AVERAGE DAILY BOARDINGS**  
**February 2023**

Measure	timeline	Ambulatory	Wheelchair	Total Clients (*)
<b>Average Weekday</b>	Feb-23	4,031	797	<b>4,827</b>
<b>Average Saturday</b>	Feb-23	1,728	375	<b>2,103</b>
<b>Average Sunday</b>	Feb-23	1,425	274	<b>1,699</b>
<b>Total Monthly</b>	<b>Feb-23</b>	<b>93,220</b>	<b>18,528</b>	<b>111,748</b>
<b>Average Weekday</b>	Feb-22	3,785	777	<b>4,562</b>
<b>Average Saturday</b>	Feb-22	1,702	366	<b>2,068</b>
<b>Average Sunday</b>	Feb-22	1,269	278	<b>1,547</b>
<b>Total Monthly</b>	<b>Feb-22</b>	<b>87,592</b>	<b>18,114</b>	<b>105,706</b>
<b>Average Weekday</b>	Feb-21	3,384	738	<b>4,122</b>
<b>Average Saturday</b>	Feb-21	1,877	444	<b>2,321</b>
<b>Average Sunday</b>	Feb-21	1,412	229	<b>1,641</b>
<b>Total Monthly</b>	<b>Feb-21</b>	<b>80,832</b>	<b>17,453</b>	<b>98,285</b>
<b>% Change Current vs. Feb 2022 Weekday</b>		6.5%	2.5%	5.8%
<b>% Change Current vs. Feb 2022 Saturday</b>		1.5%	2.5%	1.7%
<b>% Change Current vs. Feb 2022 Sunday</b>		12.3%	-1.5%	9.8%
<b>% Change Current vs. Feb 2022 Month Total</b>		<b>6.4%</b>	<b>2.3%</b>	<b>5.7%</b>
<b>% Change Current vs. Feb 2021 Weekday</b>		19.1%	8.0%	17.1%
<b>% Change Current vs. Feb 2021 Saturday</b>		-8.0%	-15.5%	-9.4%
<b>% Change Current vs. Feb 2021 Sunday</b>		0.9%	19.3%	3.5%
<b>% Change Current vs. Feb 2021 Month Total</b>		<b>15.3%</b>	<b>6.2%</b>	<b>13.7%</b>

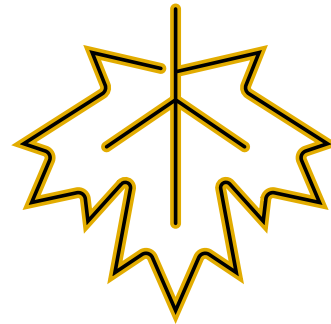
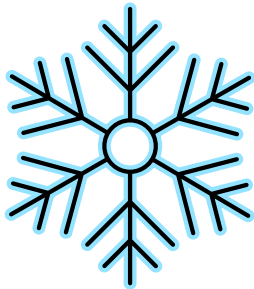
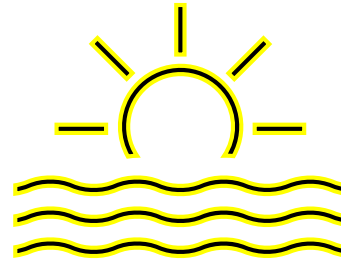
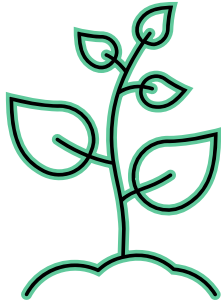
(\*) Trip count data provided by STS contractor.

# TOTAL MONTHLY AND AVERAGE WEEKDAY RIDERSHIP YEAR OVER YEAR COMPARISON CHARTS – SPECIAL TRANSPORTATION SERVICES (S.T.S.)

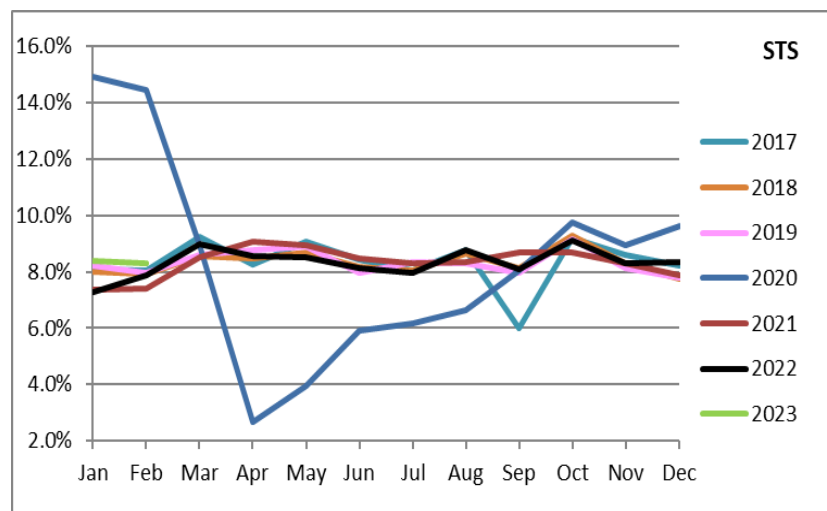
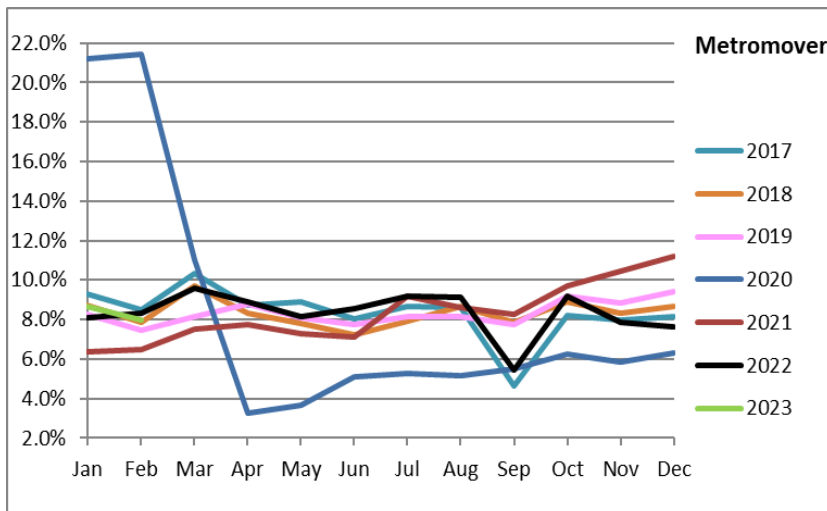
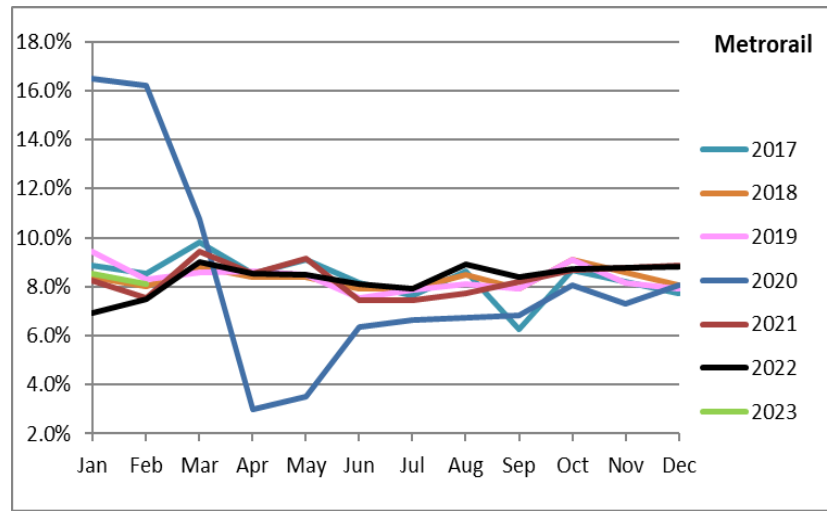
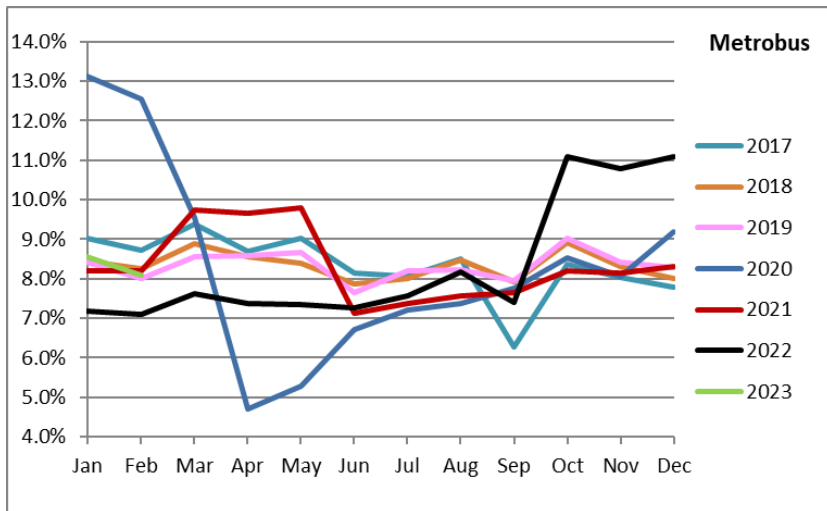




# Ridership Seasonality



# RIDERSHIP SEASONALITY – PERCENT RIDERSHIP SHARE BY MONTH AND CALENDAR YEAR FOR EACH MODE



Note: the prominent dips seen in the fall of 2017 and beginning in the spring of 2020 are due to Hurricane Irma and the SARS-CoV-2 pandemic, respectively. Reductions in Bus and Rail ridership share seen beginning in June 2021 are due to reinstatement of fares as well changes in reporting tools and datasets, as discussed earlier in this report. The prominent peaks seen beginning October 2022 are due from a changeover from farebox counts to ridership obtained from new automatic passenger counter (APC) technology on Metrobus.