



# TRANSPORTATION AND PUBLIC WORKS

## RIDERSHIP TECHNICAL REPORT (revised) *Division of Performance and Materials Management*



# Table of Contents

<i>Table of Contents</i>	2-3
<b>All Modes Overview</b>	<b>4</b>
Total Monthly Weekday, Saturday and Sunday Monthly Boardings By Mode	5
Average Weekday, Saturday and Sunday Boardings by Mode	6
Metrobus Total Monthly Ridership Comparisons by Fiscal Year	7
Metrorail Total Monthly Ridership Comparisons by Fiscal Year	8
Metromover Total Monthly Ridership Comparisons by Fiscal Year	9
STS Total Monthly Ridership Comparisons by Fiscal Year	10
All-Modes Combined Total Monthly Ridership Comparisons By Fiscal Year	11
All Modes Combined Total Monthly and Average Weekday Ridership – Year over Year Comparison Charts	12
Average Weekday Ridership – Modal Splits	13
Daily Ridership for All Modes Combined since 2/1/20	14
<b>Metrobus (revised automatic passenger counter-based sampling data estimates for directly-operated bus routes)</b>	<b>15</b>
Metrobus Average Weekday Boardings by Route	16-18
Metrobus Average Saturday Boardings by Route	19-20
Metrobus Average Sunday Boardings by Route	21-22
Metrobus Monthly Total Boardings by Route	23-25
Year-over-Year Bus Ridership by Route Service Type	26-27
Bus Routes as Ranked by Percentage of Average Weekday Ridership	28
Metrobus Cumulative Percentage Average Weekday Ridership Share by Route (Top 75%)	29
Total Monthly and Average Weekday Bus Ridership – Year over Year Comparison Charts	30
Bus “Top 5 / Bottom 5” Routes Average Weekday Ridership Performance	31
Daily Metrobus Ridership since 2/1/20	32
Metrobus Parking Patronage Summary	33

## Table of Contents (continued)

<b>Metrorail</b>	<b>34</b>
Metrorail Average Weekday Boardings by Station	35
Metrorail Average Saturday Boardings by Station	36
Metrorail Average Sunday Boardings by Station	37
Metrorail Total Monthly Boardings by Station	38
Metrorail Cumulative Percentage Average Weekday Ridership Share	39
Total Monthly and Average Weekday Rail Ridership – Year over Year Comparison Charts	40
“Top 5 / Bottom 5” Stations Average Weekday Ridership Performance	41
Daily Metrorail Ridership since 2/1/20	42
Metrorail Parking Patronage Summary	43
<b>Metromover</b>	<b>44</b>
Monthly and Average Daily Mover Boardings by Station	45
Metromover Cumulative Percentage Average Weekday Ridership Share	46
Total Monthly and Average Weekday Mover Ridership – Year over Year Comparison Charts	47
“Top 5 / Bottom 5” Stations Average Weekday Ridership Performance	48
Daily Metromover Ridership since 2/1/20	49
<b>Special Transportation Services (STS)</b>	<b>50</b>
STS Monthly and Average Daily Boardings	51
Total Monthly and Average Weekday STS Ridership – Year over Year Comparison Charts	52
Daily STS Ridership since 2/1/20	53
<b>Ridership Seasonality</b>	<b>54</b>
Ridership Seasonality – Percent Ridership Share by Month and Calendar year for Each Mode	55

# All Modes Overview



**TOTAL MONTHLY WEEKDAY, SATURDAY AND SUNDAY BOARDINGS BY MODE  
March 2023**

<b>TRAVEL MODE</b>	<b>MONTH'S TOTAL WEEKDAYS RIDERSHIP</b>	<b>MONTH'S TOTAL SATURDAYS RIDERSHIP</b>	<b>MONTH'S TOTAL SUNDAYS RIDERSHIP</b>	<b>TOTAL MONTHLY RIDERSHIP</b>	<b>% CHANGE vs Mar 2022 TOTAL MONTH RIDERSHIP</b>
<b>METROBUS (1), (2)</b>	4,347,047	484,265	352,560	5,183,872	61.1%
<b>METRORAIL (3)</b>	1,076,490	91,833	71,013	1,239,336	14.2%
<b>METROMOVER (4)</b>	428,245	70,757	59,394	558,396	4.2%
<b>STS PARATRANSIT (5)</b>	111,175	8,670	6,974	126,819	5.1%
<b>TOTAL</b>	<b>5,962,957</b>	<b>655,525</b>	<b>489,941</b>	<b>7,108,423</b>	<b>43.3%</b>

- (1) Metrobus fares resumed on June 1, 2021, following a 14-month period of fare-free rides as a result of the SARS-CoV-2 pandemic. The NextFare System farebox data replaced the bus automatic passenger counter data as ridership data of record starting on that date.
- (2) Bus ridership reporting through automatic passenger counters coupled with a new enhanced sensor system resumed on October 1, 2022.
- (3) Metrorail fares resumed on June 1, 2021, following a 14-month period of fare-free rides as a result of the SARS-CoV-2 pandemic. The NextFare System faregate data replaced the video data as ridership data of record starting on that date.
- (4) Beginning March 13, 2020 (day of National Emergency Declaration due to SARS-CoV-2 pandemic), only raw data from Metromover automatic passenger counters is reported; no estimates are performed after March 13, 2020.
- (5) Paratransit ridership data as reported by the contractor.

**AVERAGE WEEKDAY, SATURDAY AND SUNDAY BOARDINGS BY MODE  
March 2023**

<b>Travel Mode</b>	<b>Average Weekday</b>	<b>Average Saturday</b>	<b>Average Sunday</b>	<b>% Change Mar 2022 Weekday</b>	<b>% Change Mar 2022 Saturday</b>	<b>% Change Mar 2022 Sunday</b>
<b>METROBUS</b>	189,075	121,066	88,140	60.1%	67.7%	63.0%
<b>METRORAIL</b>	46,804	22,958	17,753	15.4%	6.7%	7.7%
<b>METROMOVER</b>	19,069	18,097	15,175	2.5%	1.2%	2.0%
<b>STS PARATRANSIT</b>	4,834	2,168	1,744	4.9%	3.9%	10.0%
<b>Totals (1)</b>	<b>259,782</b>	<b>164,289</b>	<b>122,812</b>	<b>42.9%</b>	<b>44.5%</b>	<b>41.1%</b>

(\*) Average ridership is calculated and published only for those days and stations with nontrivial amounts of reported data.

## METROBUS TOTAL MONTHLY RIDERSHIP COMPARISONS BY FISCAL YEAR

<b>Bus Month</b>	<b>FY 19</b>	<b>FY 20</b>	<b>Variance 19 to 20</b>	<b>FY 21</b>	<b>FY 22</b>	<b>FY 23</b>	<b>Variance 22 to 23</b>	<b>Variance 21 to 22</b>	<b>Variance 19 to 23</b>	<b>Variance 19 to 22</b>
<b>Oct</b>	4,554,886	4,507,012	-1.1%	2,805,139	3,081,157	4,679,725	51.9%	9.8%	2.7%	-32.4%
<b>Nov</b>	4,245,535	4,197,225	-1.1%	2,651,290	3,056,726	4,549,666	48.8%	15.3%	7.2%	-28.0%
<b>Dec</b>	4,081,581	4,126,990	1.1%	3,022,530	3,123,883	4,677,460	49.7%	3.4%	14.6%	-23.5%
<b>Jan</b>	4,195,911	4,316,998	2.9%	3,082,746	3,029,055	4,785,128	58.0%	-1.7%	14.0%	-27.8%
<b>Feb</b>	3,994,019	4,123,083	3.2%	3,076,966	2,995,789	4,526,317	51.1%	-2.6%	13.3%	-25.0%
<b>Mar</b>	4,266,768	3,136,162	-26.5%	3,660,639	3,218,562	5,183,872	61.1%	-12.1%	21.5%	-24.6%
<b>Apr</b>	4,291,135	1,544,316	-64.0%	3,625,048	3,105,797			-14.3%		-27.6%
<b>May</b>	4,330,922	1,734,609	-59.9%	3,683,343	3,097,574			-15.9%		-28.5%
<b>Jun</b>	3,823,863	2,210,725	-42.2%	2,672,570	3,064,059			14.6%		-19.9%
<b>Jul</b>	4,094,906	2,366,749	-42.2%	2,769,907	3,189,994			15.2%		-22.1%
<b>Aug</b>	4,109,613	2,422,014	-41.1%	2,843,552	3,442,006			21.0%		-16.2%
<b>Sep</b>	3,971,220	2,546,923	-35.9%	2,877,110	3,123,572			8.6%		-21.3%
<b>FY Total</b>	<b>49,960,359</b>	<b>37,232,806</b>	<b>-25.5%</b>	<b>36,770,840</b>	<b>37,528,174</b>			<b>2.1%</b>		<b>-24.9%</b>

## METRORAIL TOTAL MONTHLY RIDERSHIP COMPARISONS BY FISCAL YEAR

<b>Rail Month</b>	<b>FY 19</b>	<b>FY 20</b>	<b>Variance 19 to 20</b>	<b>FY 21</b>	<b>FY 22</b>	<b>FY 23</b>	<b>Variance 22 to 23</b>	<b>Variance 21 to 22</b>	<b>Variance 19 to 23</b>	<b>Variance 19 to 22</b>
<b>Oct</b>	1,757,225	1,643,166	-6.5%	769,525	844,383	1,053,191	24.7%	9.7%	-40.1%	-51.9%
<b>Nov</b>	1,656,929	1,469,448	-11.3%	699,492	850,881	1,055,066	24.0%	21.6%	-36.3%	-48.6%
<b>Dec</b>	1,553,804	1,433,928	-7.7%	769,194	860,436	1,063,096	23.6%	11.9%	-31.6%	-44.6%
<b>Jan</b>	1,708,695	1,576,340	-7.7%	799,119	832,924	1,127,340	35.3%	4.2%	-34.0%	-51.3%
<b>Feb</b>	1,501,458	1,549,118	3.2%	730,792	905,162	1,072,791	18.5%	23.9%	-28.6%	-39.7%
<b>Mar</b>	1,554,851	1,027,319	-33.9%	917,097	1,084,978	1,239,336	14.2%	18.3%	-20.3%	-30.2%
<b>Apr</b>	1,559,446	287,803	-81.5%	827,414	1,027,139			24.1%		-34.1%
<b>May</b>	1,531,597	337,696	-78.0%	887,111	1,023,322			15.4%		-33.2%
<b>Jun</b>	1,359,966	608,758	-55.2%	723,469	975,477			34.8%		-28.3%
<b>Jul</b>	1,419,158	632,964	-55.4%	722,159	953,331			32.0%		-32.8%
<b>Aug</b>	1,463,646	641,275	-56.2%	749,578	1,076,490			43.6%		-26.5%
<b>Sep</b>	1,427,726	654,244	-54.2%	795,749	1,012,331			27.2%		-29.1%
<b>FY Total</b>	<b>18,494,501</b>	<b>11,862,059</b>	<b>-35.9%</b>	<b>9,390,699</b>	<b>11,446,854</b>			<b>21.9%</b>		<b>-38.1%</b>



## METROMOVER TOTAL MONTHLY RIDERSHIP COMPARISONS BY FISCAL YEAR

<b>Mover Month</b>	<b>FY 19</b>	<b>FY 20</b>	<b>Variance 19 to 20</b>	<b>FY 21</b>	<b>FY 22</b>	<b>FY 23</b>	<b>Variance 22 to 23</b>	<b>Variance 21 to 22</b>	<b>Variance 19 to 23</b>	<b>Variance 19 to 22</b>
<b>Oct</b>	790,533	831,234	5.1%	250,044	389,065	514,308	32.2%	55.6%	-34.9%	-50.8%
<b>Nov</b>	735,198	799,632	8.8%	232,422	418,929	439,150	4.8%	80.2%	-40.3%	-43.0%
<b>Dec</b>	767,239	849,832	10.8%	251,019	450,320	426,073	-5.4%	79.4%	-44.5%	-41.3%
<b>Jan</b>	746,728	847,773	13.5%	255,968	451,566	498,566	10.4%	76.4%	-33.2%	-39.5%
<b>Feb</b>	675,160	855,398	26.7%	260,332	465,968	459,264	-1.4%	79.0%	-32.0%	-31.0%
<b>Mar</b>	737,814	441,200	-40.2%	302,502	535,857	558,396	4.2%	77.1%	-24.3%	-27.4%
<b>Apr</b>	795,696	130,549	-83.6%	310,772	495,982			59.6%		-37.7%
<b>May</b>	734,645	146,454	-80.1%	292,922	455,120			55.4%		-38.0%
<b>Jun</b>	701,318	203,637	-71.0%	286,145	477,286			66.8%		-31.9%
<b>Jul</b>	739,814	210,596	-71.5%	368,847	512,094			38.8%		-30.8%
<b>Aug</b>	739,785	205,995	-72.2%	344,319	508,359			47.6%		-31.3%
<b>Sep</b>	699,879	219,696	-68.6%	331,915	305,185			-8.1%		-56.4%
<b>FY Total</b>	<b>8,863,809</b>	<b>5,741,996</b>	<b>-35.2%</b>	<b>3,487,207</b>	<b>5,465,731</b>			<b>56.7%</b>		<b>-38.3%</b>

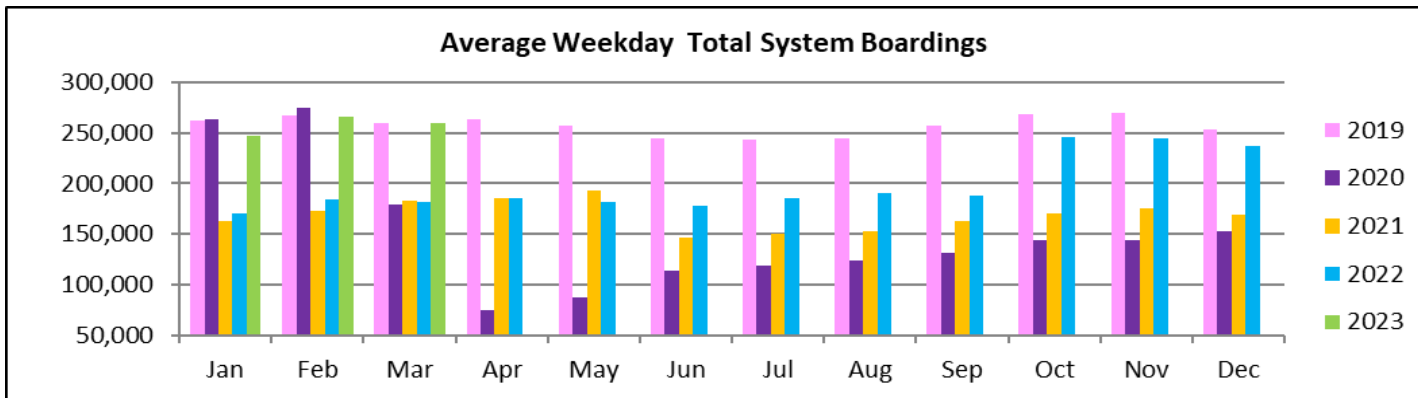
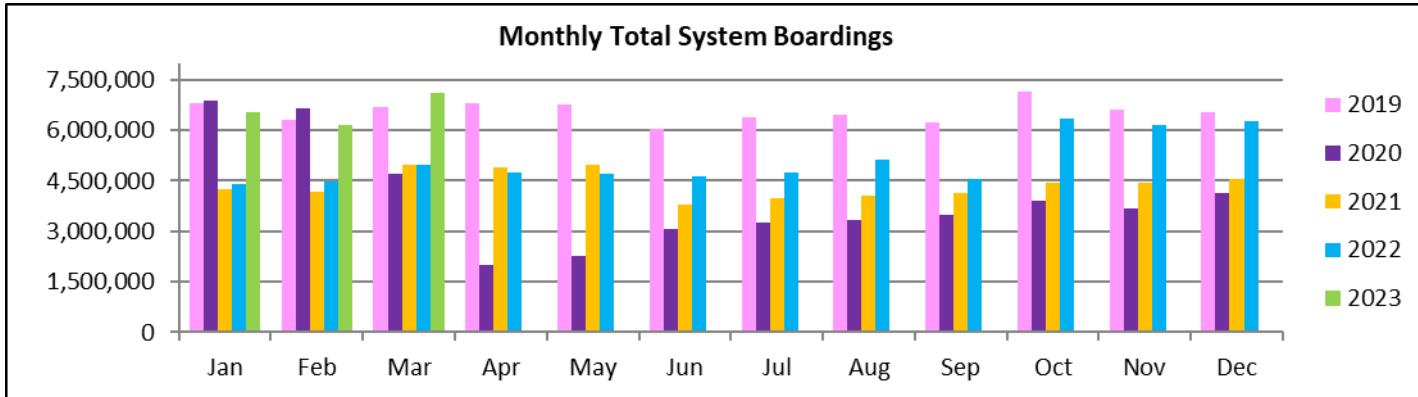
## SPECIAL TRANSPORTATION SERVICES (STS) TOTAL MONTHLY RIDERSHIP COMPARISONS BY FISCAL YEAR

<b>STS</b>			<b>Variance</b>				<b>Variance</b>	<b>Variance</b>	<b>Variance</b>	<b>Variance</b>
<b>Month</b>	<b>FY 19</b>	<b>FY 20</b>	<b>19 to 20</b>	<b>FY 21</b>	<b>FY 22</b>	<b>FY 23</b>	<b>22 to 23</b>	<b>21 to 22</b>	<b>19 to 23</b>	<b>19 to 22</b>
<b>Oct</b>	162,564	162,704	0.1%	97,388	115,122	122,189	6.1%	18.2%	-24.8%	-29.2%
<b>Nov</b>	145,653	144,366	-0.9%	89,387	110,289	111,578	1.2%	23.4%	-23.4%	-24.3%
<b>Dec</b>	136,110	138,642	1.9%	96,366	104,496	112,019	7.2%	8.4%	-17.7%	-23.2%
<b>Jan</b>	146,268	149,114	1.9%	97,928	97,541	112,632	15.5%	-0.4%	-23.0%	-33.3%
<b>Feb</b>	141,396	144,392	2.1%	98,285	105,706	111,748	5.7%	7.6%	-21.0%	-25.2%
<b>Mar</b>	153,191	89,634	-41.5%	112,930	120,718	126,819	5.1%	6.9%	-17.2%	-21.2%
<b>Apr</b>	155,808	26,877	-82.7%	120,122	114,912			-4.3%		-26.2%
<b>May</b>	158,665	39,654	-75.0%	118,636	114,505			-3.5%		-27.8%
<b>Jun</b>	141,320	59,093	-58.2%	112,397	109,054			-3.0%		-22.8%
<b>Jul</b>	148,232	61,765	-58.3%	110,059	107,188			-2.6%		-27.7%
<b>Aug</b>	147,331	66,563	-54.8%	110,766	117,941			6.5%		-19.9%
<b>Sep</b>	141,387	80,346	-43.2%	115,406	108,788			-5.7%		-23.1%
<b>FY Total</b>	<b>1,777,925</b>	<b>1,163,150</b>	<b>-34.6%</b>	<b>1,279,670</b>	<b>1,326,260</b>			<b>3.6%</b>		<b>-25.4%</b>

## ALL-MODES COMBINED TOTAL MONTHLY RIDERSHIP COMPARISONS BY FISCAL YEAR

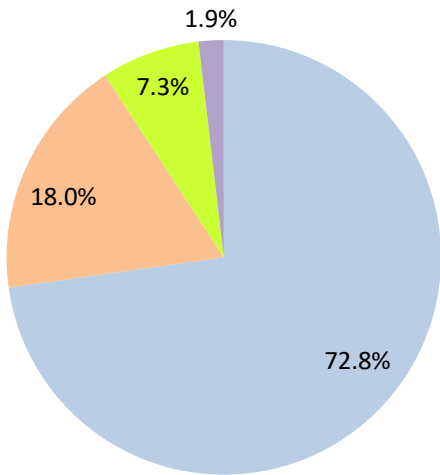
All Modes											
Month	FY 19	FY 20	FY 21	FY 22	FY 23	19 TO 20	20 TO 21	21 TO 22	22 TO 23	19 TO 23	19 TO 22
<b>Oct</b>	7,265,208	7,144,116	3,922,096	4,429,727	6,369,413	-1.7%	-45.1%	12.9%	43.8%	-12.3%	-39.0%
<b>Nov</b>	6,783,315	6,610,671	3,672,591	4,436,825	6,155,460	-2.5%	-44.4%	20.8%	38.7%	-9.3%	-34.6%
<b>Dec</b>	6,538,734	6,549,392	4,139,109	4,539,135	6,278,648	0.2%	-36.8%	9.7%	38.3%	-4.0%	-30.6%
<b>Jan</b>	6,797,602	6,890,225	4,235,761	4,411,086	6,523,666	1.4%	-38.5%	4.1%	47.9%	-4.0%	-35.1%
<b>Feb</b>	6,312,033	6,671,991	4,166,375	4,472,625	6,170,120	5.7%	-37.6%	7.4%	38.0%	-2.2%	-29.1%
<b>Mar</b>	6,712,624	4,694,315	4,993,168	4,960,115	7,108,423	-30.1%	6.4%	-0.7%	43.3%	5.9%	-26.1%
<b>Apr</b>	6,802,085	1,989,545	4,883,356	4,743,830		-70.8%	145.5%	-2.9%			-30.3%
<b>May</b>	6,755,829	2,258,413	4,982,012	4,690,521		-66.6%	120.6%	-5.9%			-30.6%
<b>Jun</b>	6,026,467	3,082,213	3,794,581	4,625,876		-48.9%	23.1%	21.9%			-23.2%
<b>Jul</b>	6,402,110	3,272,074	3,970,972	4,762,607		-48.9%	21.4%	19.9%			-25.6%
<b>Aug</b>	6,460,375	3,335,847	4,048,215	5,144,796		-48.4%	21.4%	27.1%			-20.4%
<b>Sep</b>	6,240,212	3,501,209	4,120,180	4,549,876		-43.9%	17.7%	10.4%			-27.1%
<b>FY Total</b>	<b>79,096,594</b>	<b>56,000,011</b>	<b>50,928,416</b>	<b>55,767,019</b>		<b>-29.2%</b>	<b>-9.1%</b>	<b>9.5%</b>			<b>-29.5%</b>

## TOTAL MONTHLY AND AVERAGE WEEKDAY RIDERSHIP YEAR OVER YEAR COMPARISON CHARTS – ALL MODES COMBINED



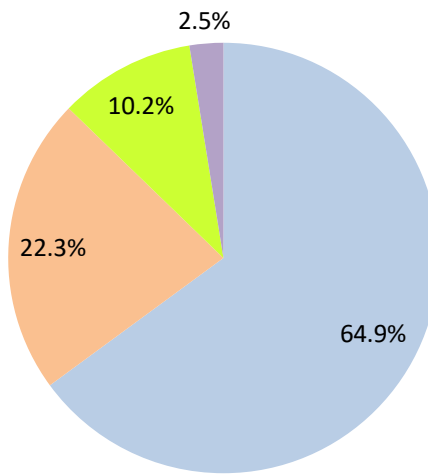
# AVERAGE WEEKDAY RIDERSHIP - MODAL SPLITS

March 2023



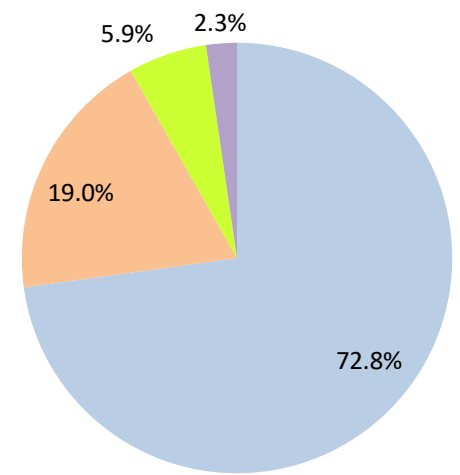
boardings

March 2022



boardings

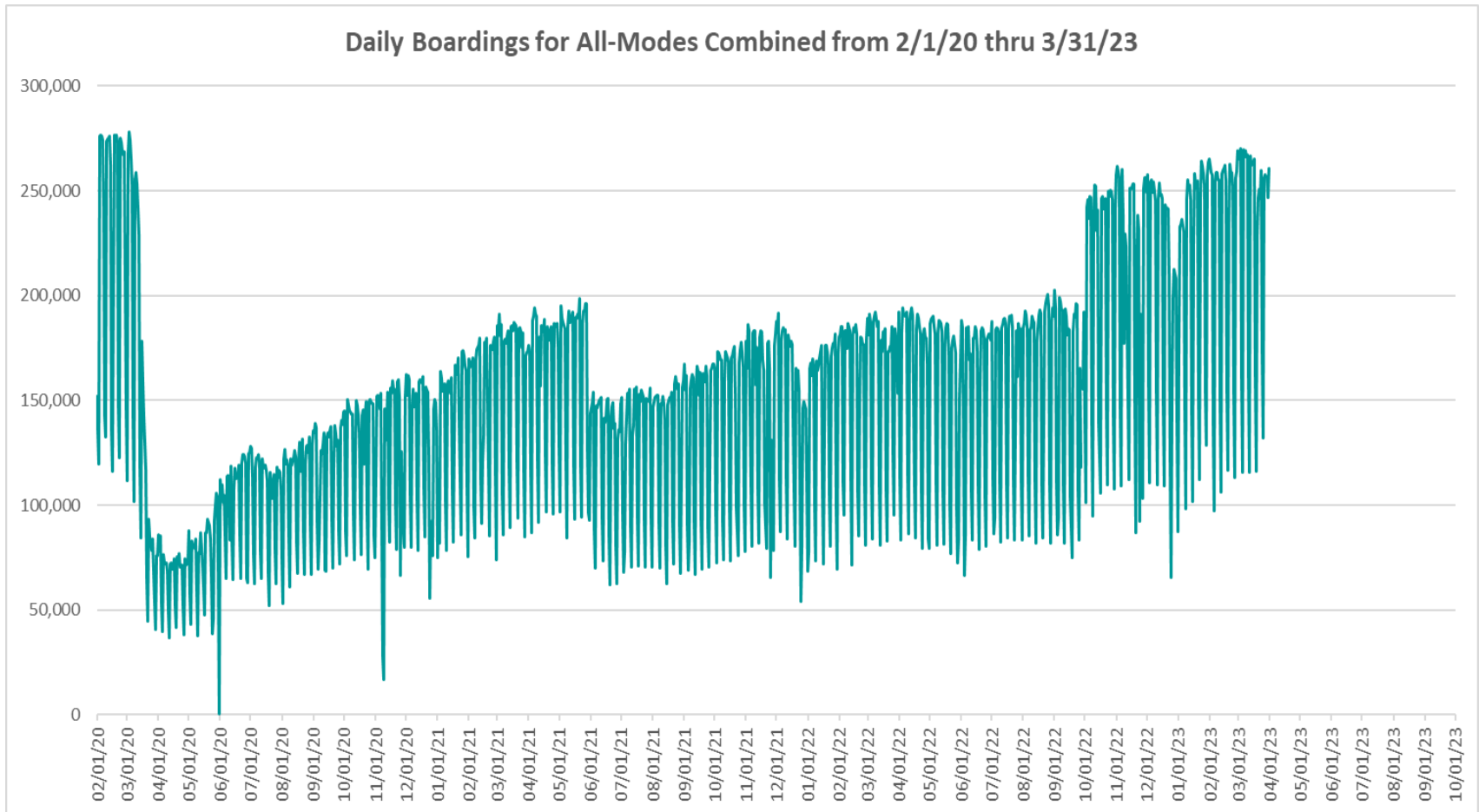
March 2021



boardings



## DAILY RIDERSHIP FOR ALL MODES COMBINED SINCE FEBRUARY 1, 2020



- (1) National Emergency was declared on 3/13/20 as a result of the SARS-CoV-2 pandemic.
- (2) There was no Metrobus, Metrorail and Metromover service on 5/31/20, as a safety precaution, and no service for any of the four modes on 9/28/22 as a result of Hurricane Ian.
- (3) The dip at the start of the second week of November 2020 is due to Hurricane Eta.
- (4) The reduction seen beginning 6/1/21 is partly due to the resumption of fares for bus and rail, and partly the result of having resumed reporting Cubic farebox data rather than bus APC counts, as well as Cubic rail faregate counts instead of video camera counts on that date. Bus APC counts then replace farebox counts beginning on 10/1/22.
- (5) Periodic (weekly) variations are prominent, since weekday ridership is almost always significantly higher than weekend or holiday ridership.

# Metrobus



## METROBUS AVERAGE WEEKDAY BOARDINGS BY ROUTE (†)

Route	Average Weekday	Average Weekday	Percent Change	Average Weekday	Percent Change	Average Weekday	Percent Change	Average Weekday	Percent Change
	Mar-23	Mar-22	YOY	Feb-20	Current vs Feb-20	Feb-23	MOM	Mar-21	YO2Y
<b>weekdays</b>									
1 (*)	217	168	29.2%	184	18.0%	203	6.8%	220	-1.4%
2	2,779	1,919	44.8%	3,102	-10.4%	2,858	-2.8%	2,219	25.2%
3	5,298	3,694	43.4%	5,137	3.1%	5,253	0.9%	4,940	7.2%
7	4,076	2,792	46.0%	3,501	16.4%	4,115	-1.0%	2,420	68.4%
8	5,102	3,324	53.5%	3,909	30.5%	5,076	0.5%	4,279	19.2%
9	6,091	3,793	60.6%	5,528	10.2%	6,326	-3.7%	6,182	-1.5%
10	2,434	1,792	35.9%	2,482	-1.9%	2,436	-0.1%	1,886	29.0%
11	9,171	5,929	54.7%	7,292	25.8%	9,152	0.2%	6,488	41.4%
12	3,041	1,759	72.9%	2,779	9.4%	3,155	-3.6%	2,016	50.9%
16	2,010	1,388	44.8%	1,862	7.9%	2,014	-0.2%	1,436	40.0%
17	3,849	2,368	62.5%	3,878	-0.8%	4,086	-5.8%	3,113	23.7%
19	1,589	874	81.8%	1,542	3.0%	1,697	-6.4%	1,196	32.9%
21	1,857	1,145	62.2%	1,817	2.2%	1,844	0.7%	1,566	18.5%
22	4,445	2,461	80.6%	3,640	22.1%	4,579	-2.9%	2,874	54.6%
24 - Coral Way Limited	2,399	1,433	67.4%	1,340	79.0%	2,374	1.0%	1,335	79.6%
27	7,399	4,963	49.1%	6,972	6.1%	7,601	-2.7%	5,635	31.3%
29 (*)	517	467	10.6%	534	-3.2%	504	2.5%	397	30.2%
31 - BUSWAY LOCAL	1,209	676	78.9%	1,089	11.0%	1,213	-0.3%	717	68.5%
32	2,693	1,642	64.0%	2,390	12.7%	2,789	-3.4%	1,709	57.6%
33	1,968	1,142	72.3%	1,687	16.7%	2,073	-5.1%	1,127	74.7%
34 EXPRESS	1,571	883	77.8%	2,008	-21.8%	1,575	-0.2%	840	87.1%
35	2,726	1,448	88.2%	2,421	12.6%	2,869	-5.0%	1,795	51.8%
36	2,799	1,963	42.6%	2,536	10.4%	2,876	-2.7%	1,751	59.9%
37	3,756	2,533	48.3%	3,273	14.8%	3,885	-3.3%	2,961	26.8%
38	6,272	3,486	79.9%	6,361	-1.4%	5,809	8.0%	4,452	40.9%
39 EXPRESS				893				259	
40	2,467	1,360	81.4%	1,772	39.2%	2,445	0.9%	1,272	93.9%
42	1,099	653	68.2%	820	34.0%	1,185	-7.3%	749	46.8%
46 - LIBERTY CITY CONN. (*)	22	22	1.4%	41	-45.5%	23	-2.5%	24	-9.3%
51 - FLAGLER MAX	4,069	2,615	55.6%	3,109	30.9%	4,226	-3.7%	2,558	59.1%
52	1,326	791	67.6%	1,261	5.1%	1,457	-9.0%	918	44.5%
54	3,318	2,112	57.1%	2,940	12.8%	3,422	-3.1%	2,400	38.3%
55 MARLINS SHUTTLE									
56 (*)	370	276	33.8%	354	4.5%	403	-8.2%	206	79.6%
57	542	285	90.1%	433	25.1%	534	1.4%	327	65.6%
62	1,858	1,167	59.2%	1,815	2.4%	1,953	-4.9%	1,606	15.7%
71 (*)	756	522	44.8%	711	6.4%	763	-0.9%	410	84.4%
72 (*)	719	548	31.1%	781	-8.0%	781	-8.0%	437	64.6%

(†) In this table and those which follow, "YOY" stands for "year-over-year", "MOM" for "month-over-month" and "YO2Y" for "year over two years", i.e., current month vs 12 months prior, one month prior, and 24 months prior, respectively.

(\*) Contracted routes

(\*\*) Due to effects from the SARS-CoV-2 pandemic; rides were fare-free beginning March 22, 2020; fares were reinstated on June 1, 2021, and a switchover from farebox to automatic passenger counter ridership took place on 10/1/22.



## METROBUS AVERAGE WEEKDAY BOARDINGS BY ROUTE

Route	Average Weekday	Average Weekday	Percent Change	Average Weekday	Percent Change	Average Weekday	Percent Change	Average Weekday	Percent Change
	weekdays	Mar-23	Mar-22	YOY	Feb-20	Current vs Feb-20	Feb-23	MOM	Mar-21
73	3,282	2,003	63.8%	2,124	54.5%	3,337	-1.7%	1,504	118.2%
75	1,412	813	73.7%	1,429	-1.2%	1,447	-2.5%	1,219	15.8%
77	9,107	5,372	69.5%	7,129	27.7%	9,332	-2.4%	6,935	31.3%
79 STREET MAX	576	274	110.4%	361	59.5%	634	-9.1%		
82 - WESTCHESTER CIRC. (*)	73	27	172.8%	62	18.6%	61	19.7%	28	157.0%
87	2,037	1,255	62.3%	1,499	35.9%	2,177	-6.4%	1,228	65.9%
88	2,524	1,528	65.2%	2,076	21.5%	2,578	-2.1%	1,798	40.4%
93 - BISCAYNE MAX	3,731	2,217	68.3%	3,334	11.9%	3,782	-1.3%	1,897	96.6%
95 EXPRESS	1,094	796	37.4%	1,690	-35.3%	1,096	-0.2%	430	154.1%
99	1,806	1,099	64.4%	1,473	22.7%	1,712	5.5%	1,288	40.2%
101 - A (*)	273	196	39.6%	177	54.5%	250	9.1%	126	116.2%
102 - B	2,302	1,359	69.4%	1,778	29.4%	2,319	-0.7%	1,248	84.4%
103 - C				463				281	
104	987	526	87.8%	837	17.9%	997	-1.0%	407	142.5%
105 - E	1,469	975	50.6%	1,287	14.1%	1,540	-4.6%	1,293	13.7%
107 - G	2,115	1,199	76.4%	1,713	23.4%	2,122	-0.3%	1,242	70.3%
108 - H	570	348	63.7%	473	20.7%	592	-3.7%	438	30.1%
110 - J	3,302	2,136	54.6%	2,508	31.6%	3,291	0.3%	2,901	13.8%
112 - L	8,914	5,652	57.7%	7,636	16.7%	9,303	-4.2%	7,006	27.2%
113 - M	912	514	77.3%	866	5.3%	605	50.7%	584	56.1%
115 (*)	147	137	7.3%	180	-18.5%	150	-2.2%	194	-24.2%
119 - S	10,553	7,137	47.9%	8,970	17.7%	10,414	1.3%	8,600	22.7%
120 - BEACH MAX	7,210	4,836	49.1%	6,667	8.1%	7,433	-3.0%	4,997	44.3%
132 TRI-RAIL (DORAL)	44	5	747.8%	16	182.6%	41	7.1%	15	185.3%
135	1,565	826	89.5%	1,399	11.9%	1,684	-7.1%	857	82.5%
136	158	109	45.6%	126	25.4%	146	8.2%	72	118.4%
137 - WEST DADE CONN.	2,351	1,241	89.4%	1,626	44.6%	2,355	-0.2%	1,196	96.6%
150 - MIAMI BEACH AIRPORT FLYER	2,432	1,382	75.9%	1,867	30.3%	2,372	2.5%	1,301	86.9%
155 - BISCAYNE GARDENS CIRCULATOR (*)	46	36	26.1%	44	4.0%	43	6.8%	32	44.8%
175 - NW MIAMI-DADE EXPRESS				33					
183	3,595	2,120	69.5%	3,149	14.2%	3,679	-2.3%	2,644	35.9%
195 EXPRESS - BROWARD BLVD				372					
196 EXPRESS - SHERIDAN ST				383					
200 - CUTLER BAY LOCAL	106	66	61.3%	158	-32.6%	130	-18.3%	124	-14.0%
202 - LITTLE HAITI CONN. (*)	77	107	-27.9%	140	-44.9%	76	0.9%	134	-42.6%
204 KILLIAN KAT	749	432	73.5%	1,071	-30.0%	752	-0.3%		

## METROBUS AVERAGE WEEKDAY BOARDINGS BY ROUTE

Route	Average Weekday	Average Weekday	Percent Change	Average Weekday	Percent Change	Average Weekday	Percent Change	Average Weekday	Percent Change
	Mar-23	Mar-22	YOY	Feb-20	Current vs Feb-20	Feb-23	MOM	Mar-21	YO2Y
<b>weekdays</b>									
207 (7st) - LITTLE HAVANA CIRC	1,810	1,044	73.5%	1,489	21.6%	1,869	-3.2%	773	134.3%
208 (8st) - LITTLE HAVANA CIRC	1,749	880	98.8%	1,308	33.8%	1,783	-1.9%	844	107.2%
210 - SKYLAKE CIRC (*)	303	274	10.5%	282	7.5%	311	-2.4%	357	-15.1%
211 - OVERTOWN CIRC. (*)	86	84	2.1%	58	48.3%	87	-1.3%	44	97.0%
212 - SWEETWATER CIRC. (*)	23	21	6.7%	15	53.9%	27	-14.8%	14	59.1%
217 - BUNCHE PARK CIRC (*)	59	72	-18.2%	97	-39.7%	61	-3.9%	67	-12.7%
238 EAST/WEST CONN.	604	328	84.1%	449	34.4%	639	-5.5%	387	56.3%
241 TUTTLE LIMITED	367	82	349.0%			302	21.3%		
246 - NIGHT OWL	60	35	70.4%	94	-36.1%	56	6.9%	84	-28.4%
248 - PRINCETON CIRCULATOR (*)	93	72	29.8%	135	-30.7%	153	-39.1%	95	-2.0%
252 - CORAL REEF MAX	1,063	598	77.6%	851	24.9%	1,133	-6.2%	510	108.6%
254 - BROWNSVILLE CIRC. (*)	6	6	9.2%	19	-67.6%	6	8.1%	13	-52.8%
267 - LUDLAM LIMITED (*)	191	123	55.3%	149	28.4%	176	8.8%	104	84.2%
272 SUNSET KAT (*)	410	307	33.6%	550	-25.5%	402	2.1%	257	59.5%
277 - 7th AVENUE MAX	847	462	83.4%	683	23.9%	828	2.3%	556	52.2%
286 - NORTH POINTE CIRC. (*)	93	57	63.8%	97	-3.8%	91	2.4%	39	138.6%
287 - SAGA BAY MAX	336	210	60.0%	358	-6.0%	387	-13.1%	166	102.9%
288 - KENDALL CRUISER	495	394	25.7%	762	-35.1%	491	0.7%		
295 EXPRESS - BROWARD BLVD - CIVIC CENTER				233					
296 EXPRESS - SHERIDAN ST - CIVIC CENTER				215					
297-27th AVENUE ORANGE MAX	1,392	808	72.1%	1,356	2.6%	1,318	5.6%	894	55.7%
301 DADE-MONROE EXPRESS (*)	993	761	30.6%	841	18.0%	886	12.0%	922	7.7%
302 CARD SOUND EXPRESS (*)	136	71	90.9%	86	58.2%	126	8.0%	84	62.5%
344 (*)	66	45	47.7%	96	-31.0%	73	-9.7%	77	-14.3%
500	69	10	598.2%	81	-15.0%	79	-12.6%	52	32.0%
836 EXPRESS	274	137	100.1%			257	6.6%	70	293.8%
837 EXPRESS	128					116	9.8%		
GREEN HILLS SHUTTLE (*)	10	6	70.8%	9	13.9%	4	156.3%	7	46.4%
KINGS CREEK SHUTTLE (*)	21	14	50.0%	13	61.5%	19	10.5%	8	180.0%
SIERRA LAKES SHUTTLE (*)	20	15	37.9%	45	-55.6%	16	27.0%	16	23.1%
ROBERT SHARP SHUTTLE (*)	19	18	2.2%	10	95.8%	23	-17.3%	19	-4.1%
AHEPA SHUTTLE (*)	22	18	22.5%	21	5.1%	16	34.2%	20	10.4%
<b>Total</b>	<b>189,075</b>	<b>118,069</b>	<b>60.1%</b>	<b>167,711</b>	<b>12.7%</b>	<b>191,740</b>	<b>-1.4%</b>	<b>133,218</b>	<b>41.9%</b>

(\*) The following routes are entirely operated under contract: 1, 29, 46, 56, 71, 72, 82, 101-A, 115, 155, 202, 210, 211, 212, 217, 246, 248, 254, 267, 272, 286, 301, 302 and 344.

(1) Includes shuttles and those routes which were not run both years.

(2) Several express routes were suspended beginning at the end of March 2020, due to the SARS-CoV-2 pandemic, while other routes had alignment and schedule modifications made to them, in an ongoing effort to optimize service delivery.

## METROBUS AVERAGE SATURDAY BOARDINGS BY ROUTE

Route	Average Saturday	Average Saturday	Percent Change	Average Saturday	Percent Change	Average Saturday	Percent Change	Average Saturday	Percent Change
	Mar-23	Mar-22	YOY	Feb-20	Current vs Feb-20	Feb-23	MOM	Mar-21	YO2Y
<b>Saturdays</b>									
1 (*)	162	133	22.3%	215	-24.7%	176	-8.0%	201	-19.5%
2	1,601	1,004	59.4%	1,616	-1.0%	1,690	-5.3%	1,206	32.8%
3	6,161	3,833	60.7%	5,229	17.8%	5,821	5.8%	4,388	40.4%
7	2,342	1,531	52.9%	1,887	24.1%	2,173	7.8%	1,340	74.7%
8	2,604	1,956	33.1%	2,027	28.4%	2,780	-6.4%	2,478	5.1%
9	3,916	2,062	89.9%	3,034	29.1%	3,403	15.1%	3,290	19.0%
10	2,147	1,454	47.7%	1,896	13.2%	1,896	13.2%	1,608	33.5%
11	7,621	4,453	71.1%	5,182	47.1%	6,838	11.4%	3,547	114.8%
16	2,014	1,128	78.5%	1,566	28.6%	1,748	15.2%	1,363	47.8%
17	2,508	1,541	62.7%	2,363	6.1%	2,476	1.3%	2,123	18.1%
22	2,768	1,624	70.5%	2,084	32.8%	2,415	14.6%	1,991	39.0%
24 - Coral Way Limited	1,723	1,002	72.0%	1,165	47.8%	1,608	7.2%	1,003	71.8%
27	5,018	3,000	67.3%	4,034	24.4%	4,444	12.9%	4,087	22.8%
31 - BUSWAY LOCAL	1,077	569	89.4%	896	20.2%	913	17.9%	871	23.6%
32	1,209	887	36.2%	1,029	17.5%	1,247	-3.1%	921	31.2%
33	1,326	749	77.1%	951	39.5%	1,168	13.6%	968	37.0%
35	1,603	975	64.5%	1,372	16.9%	1,608	-0.3%	1,135	41.2%
36	1,560	1,091	42.9%	1,289	21.0%	1,711	-8.9%	1,392	12.1%
37	2,647	1,452	82.3%	2,090	26.6%	2,312	14.5%	1,799	47.2%
38	6,281	2,941	113.6%	4,715	33.2%	4,939	27.2%	3,368	86.5%
40	994	579	71.8%	655	51.8%	918	8.3%	616	61.5%
42	757	476	59.1%	552	37.2%	637	18.8%	475	59.4%
52	767	449	70.8%	686	11.8%	706	8.7%	690	11.1%
54	2,126	1,338	58.8%	1,727	23.1%	2,080	2.2%	1,629	30.5%
55 MARLINS SHUTTLE									
62	1,436	974	47.4%	1,343	6.9%	1,393	3.1%	1,211	18.6%
71 (*)	249	280	-11.0%	252	-1.0%	263	-5.2%	219	13.7%
72 (*)	417	288	44.8%	350	19.4%	400	4.4%	254	64.3%
73	1,415	853	66.0%	860	64.5%	1,411	0.3%	784	80.6%
75	543	277	95.9%	468	16.0%	516	5.3%	487	11.4%
77	5,887	3,610	63.1%	4,197	40.3%	5,717	3.0%	3,651	61.3%
87	661	423	56.2%	402	64.3%	678	-2.4%	472	40.2%
88	1,983	1,306	51.9%	1,620	22.4%	1,883	5.4%	1,328	49.3%
99	1,199	739	62.2%	849	41.3%	1,071	11.9%	899	33.4%

## METROBUS AVERAGE SATURDAY BOARDINGS BY ROUTE

Route	Average Saturday	Average Saturday	Percent Change	Average Saturday	Percent Change	Average Saturday	Percent Change	Average Saturday	Percent Change
	Mar-23	Mar-22	YOY	Feb-20	Current vs Feb-20	Feb-23	MOM	Mar-21	YO2Y
<b>Saturdays</b>									
101 - A (*)	33	75	-56.1%	71	-53.4%	72	-54.2%	69	-51.8%
102 - B	1,238	728	70.0%	851	45.5%	1,256	-1.4%	707	75.1%
103 - C				315				409	
104	551	297	85.6%	468	17.6%	543	1.4%	209	163.2%
105 - E	848	570	48.9%	619	37.0%	831	2.1%	699	21.4%
107 - G	1,509	845	78.7%	1,066	41.5%	1,379	9.4%	1,228	22.9%
108 - H	516	326	58.3%	372	38.6%	463	11.5%	469	10.1%
110 - J	2,368	1,554	52.4%	1,952	21.3%	2,269	4.4%	1,795	31.9%
112 - L	8,159	4,837	68.7%	5,667	44.0%	7,513	8.6%	5,294	54.1%
113 - M	803	344	133.5%	503	59.5%	465	72.6%	546	47.0%
115 (*)	69	126	-45.5%	82	-16.7%	82	-16.7%	165	-58.4%
119 - S	9,603	5,015	91.5%	6,861	40.0%	9,092	5.6%	6,308	52.2%
120 - BEACH MAX	6,764	3,806	77.7%	4,744	42.6%	6,553	3.2%	3,648	85.4%
135	582	274	112.8%	539	8.1%	533	9.2%	362	61.0%
137 - WEST DADE CONN.	1,516	986	53.8%	1,027	47.6%	1,485	2.1%	919	64.9%
150 - MIAMI BEACH AIRPORT FLYER	2,140	1,366	56.7%	1,604	33.4%	2,341	-8.6%	1,368	56.4%
183	2,224	1,495	48.8%	1,790	24.3%	2,133	4.3%	1,951	14.0%
200 - CUTLER BAY LOCAL	90	58	54.7%	119	-24.7%	117	-23.0%	87	2.9%
202 - LITTLE HAITI CONN. (*)	25	53	-53.3%	50	-50.7%	29	-13.2%	94	-73.5%
207 (7st) - LITTLEHAVANA CIRC	1,281	577	122.0%	1,032	24.0%	1,107	15.7%	768	66.8%
208 (8st) - LITTLEHAVANA CIRC	1,316	604	118.1%	1,044	26.0%	1,299	1.3%	882	49.2%
210 - SKYLAKE CIRC (*)	91	133	-31.5%	165	-44.8%	97	-6.4%	131	-30.4%
241 TUTTLE LIMITED	206	33	529.0%			220	-6.2%		
246 - NIGHT OWL	68	56	21.3%	84	-19.1%	44	55.1%	93	-26.6%
252 - CORAL REEF MAX	439	267	64.1%	302	45.2%	420	4.4%	206	112.6%
286 - NORTH POINTE CIRC. (*)	71	52	36.5%	41	74.0%	63	12.7%	31	129.0%
301 DADE-MONROE EXPRESS (*)	909	725	25.3%	801	13.5%	815	11.6%	871	4.3%
302 CARD SOUND EXPRESS (*)	108	60	80.7%	57	89.9%	96	12.6%	79	36.1%
338 - WEEKEND EXPRESS	231	150	54.0%	237	-2.6%	256	-9.9%	158	45.9%
500	38	12	212.2%	70	-45.4%	77	-50.3%	99	-61.2%
12/21 WEEKEND INTERL.	2,491	1,741	43.1%	2,528	-1.5%	2,850	-12.6%	2,362	5.4%
FEDERATION GARDENS SHUTTLE (*)	28	21	34.1%	28	-3.2%	20	37.5%	22	25.0%
<b>Total</b>	<b>121,066</b>	<b>72,191</b>	<b>67.7%</b>	<b>93,742</b>	<b>29.1%</b>	<b>113,588</b>	<b>6.6%</b>	<b>83,862</b>	<b>44.4%</b>

## METROBUS AVERAGE SUNDAY BOARDINGS BY ROUTE

Route	Average Sunday	Average Sunday	Percent Change	Average Sunday	Percent Change	Average Sunday	Percent Change	Average Sunday	Percent Change
	Mar-23	Mar-22	YOY	Feb-20	Current vs Feb-20	Feb-23	MOM	Mar-21	YO2Y
<b>Sundays</b>									
1 (*)	158	146	8.1%	201	-21.5%	157	0.2%	168	-6.4%
2	1,153	792	45.6%	1,335	-13.6%	1,136	1.5%	699	65.0%
3	4,937	3,052	61.7%	4,353	13.4%	5,003	-1.3%	4,055	21.7%
7	1,778	1,220	45.7%	1,654	7.5%	1,565	13.6%	1,112	59.9%
8	1,945	1,212	60.5%	1,746	11.4%	1,963	-0.9%	1,742	11.6%
9	2,850	1,931	47.6%	2,549	11.8%	2,978	-4.3%	2,205	29.3%
10	1,672	1,023	63.4%	1,441	16.0%	1,657	0.9%	1,265	32.2%
11	4,869	2,703	80.1%	3,917	24.3%	4,394	10.8%	2,503	94.5%
16	1,120	769	45.6%	997	12.4%	1,100	1.8%	778	43.9%
17	1,825	1,278	42.8%	1,833	-0.4%	1,845	-1.1%	1,704	7.1%
22	1,922	1,217	57.9%	1,548	24.1%	1,929	-0.4%	1,714	12.1%
24 - Coral Way Limited	1,290	931	38.6%	905	42.6%	1,187	8.7%	962	34.1%
27	3,444	2,250	53.1%	2,918	18.0%	3,168	8.7%	2,615	31.7%
31 - BUSWAY LOCAL	755	435	73.7%	715	5.6%	774	-2.4%	517	46.0%
32	762	501	52.0%	772	-1.3%	816	-6.6%	600	26.9%
33	691	435	59.1%	607	13.9%	670	3.1%	506	36.7%
35	1,144	620	84.4%	942	21.5%	1,114	2.7%	816	40.2%
36	1,299	881	47.4%	1,111	17.0%	1,203	7.9%	1,300	-0.1%
37	1,965	1,165	68.6%	1,739	13.0%	1,897	3.5%	1,535	28.0%
38	4,554	2,531	79.9%	4,147	9.8%	4,895	-7.0%	3,228	41.1%
40	631	360	75.2%	447	41.1%	550	14.6%	391	61.6%
42	476	293	62.4%	416	14.3%	427	11.4%	349	36.2%
52	521	305	70.8%	466	11.7%	512	1.8%	436	19.4%
54	1,257	805	56.2%	1,171	7.3%	1,254	0.2%	1,128	11.4%
55 MARLINS SHUTTLE									
62	903	550	64.3%	891	1.4%	885	2.0%	795	13.6%
71 (*)	177	142	25.1%	162	9.3%	109	62.0%	153	15.5%
72 (*)	373	280	33.2%	265	40.9%	398	-6.3%	237	57.4%
73	725	372	95.1%	495	46.6%	776	-6.6%	421	72.5%
75	333	254	31.2%	271	23.0%	322	3.3%	320	4.2%
77	4,043	2,402	68.3%	2,815	43.6%	3,589	12.6%	2,697	49.9%
87	406	199	104.2%	319	27.2%	405	0.1%	273	48.5%
88	1,394	985	41.5%	1,286	8.4%	1,379	1.1%	1,045	33.4%
99	892	415	114.9%	658	35.6%	808	10.4%	667	33.7%

## METROBUS AVERAGE SUNDAY BOARDINGS BY ROUTE

Route <b>Sundays</b>	Average Sunday	Average Sunday	Percent Change	Average Sunday	Percent Change	Average Sunday	Percent Change	Average Sunday	Percent Change
	Mar-23	Mar-22	YOY	Feb-20	Current vs Feb-20	Feb-23	MOM	Mar-21	YO2Y
101 - A (*)	43	49	-11.3%	56	-22.5%	40	7.5%	47	-7.5%
102 - B	974	591	65.0%	717	36.0%	953	2.2%	594	63.9%
103 - C				212				249	
104	353	224	58.1%	317	11.4%	349	1.2%	111	218.2%
105 - E	790	563	40.4%	616	28.2%	737	7.1%	810	-2.6%
107 - G	1,146	781	46.8%	895	28.0%	1,057	8.4%	880	30.2%
108 - H	465	266	75.0%	328	41.6%	383	21.4%	429	8.3%
110 - J	2,060	1,096	88.0%	1,638	25.8%	1,933	6.6%	1,167	76.5%
112 - L	5,933	3,218	84.4%	4,804	23.5%	5,320	11.5%	5,163	14.9%
113 - M	666	246	170.5%	431	54.7%	407	63.8%	411	62.0%
115 (*)	66	83	-20.5%	80	-17.8%	58	13.4%	111	-40.9%
119 - S	9,496	5,340	77.8%	7,141	33.0%	8,724	8.8%	6,438	47.5%
120 - BEACH MAX	4,056	2,416	67.9%	3,469	16.9%	4,070	-0.3%	2,305	76.0%
135	376	197	91.1%	349	7.5%	396	-5.3%	283	32.8%
137 - WEST DADE CONN.	1,077	642	67.8%	879	22.6%	1,020	5.6%	775	39.0%
150 - MIAMI BEACH AIRPORT FLYER	2,283	1,303	75.3%	1,574	45.1%	2,134	7.0%	1,383	65.1%
183	1,711	1,037	64.9%	1,413	21.1%	1,610	6.3%	1,419	20.6%
200 - CUTLER BAY LOCAL	131	1	13025.0%	59	124.4%	227	-42.2%	48	175.3%
202 - LITTLE HAITI CONN. (*)	27	53	-48.1%	39	-30.1%	27	1.9%	98	-72.3%
207 (7st) - LITTLE HAVANA CIRC	808	514	57.3%	796	1.5%	997	-18.9%	514	57.1%
208 (8st) - LITTLE HAVANA CIRC	961	370	159.4%	911	5.4%	929	3.4%	783	22.6%
210 - SKYLAKE CIRC (*)	81	95	-14.7%	143	-43.2%	88	-7.7%	117	-30.7%
241 TUTTLE LIMITED	185	46	307.1%			310	-40.2%		
246 - NIGHT OWL	59	32	85.0%	87	-32.5%	65	-9.6%	80	-26.3%
252 - CORAL REEF MAX	365	186	95.7%	199	83.4%	331	10.1%	187	94.7%
301 DADE-MONROE EXPRESS (*)	835	653	28.0%	751	11.1%	770	8.4%	903	-7.5%
302 CARD SOUND EXPRESS (*)	72	49	46.7%	57	25.4%	110	-35.0%	52	37.5%
338 - WEEKEND EXPRESS	193	147	31.6%	252	-23.4%	222	-13.1%	112	73.1%
500	81	12	602.2%	83	-2.4%	63	27.4%	77	5.2%
12/21 WEEKEND INTERL.	590	1,434	-58.9%	2,048	-71.2%	1,060	-44.3%	1,726	-65.8%
<b>Total</b>	<b>88,140</b>	<b>54,089</b>	<b>63.0%</b>	<b>75,428</b>	<b>16.9%</b>	<b>85,254</b>	<b>3.4%</b>	<b>66,206</b>	<b>33.1%</b>

## METROBUS TOTAL MONTHLY BOARDINGS BY ROUTE

Route	Total Month	Total Month	Percent Change	Total Month	Percent Change	Total Month	Percent Change	Total Month	Percent Change
	Mar-23	Mar-22	YOY	Feb-20	Current vs Feb-20	Feb-23	MOM	Mar-21	YO2Y
<b>Monthly Total</b>									
1 (*)	6,273	4,978	26.0%	5,558	12.9%	5,401	16.1%	6,546	-4.2%
2	74,930	51,316	46.0%	75,463	-0.7%	66,734	12.3%	58,653	27.8%
3	166,238	112,499	47.8%	146,294	13.6%	148,102	12.2%	147,390	12.8%
7	110,220	75,216	46.5%	86,077	28.0%	94,705	16.4%	65,460	68.4%
8	135,533	89,131	52.1%	95,295	42.2%	117,389	15.5%	115,298	17.6%
9	167,165	103,214	62.0%	135,924	23.0%	148,690	12.4%	164,154	1.8%
10	71,259	51,115	39.4%	64,874	9.8%	62,152	14.7%	54,879	29.8%
11	260,895	164,996	58.1%	187,425	39.2%	223,205	16.9%	173,423	50.4%
12	69,948	40,458	72.9%	55,585	25.8%	59,950	16.7%	46,369	50.9%
16	58,756	39,514	48.7%	49,061	19.8%	50,760	15.8%	41,587	41.3%
17	105,851	65,734	61.0%	96,715	9.4%	96,752	9.4%	86,893	21.8%
19	36,540	20,104	81.8%	30,847	18.5%	32,243	13.3%	27,501	32.9%
21	42,700	26,333	62.2%	36,341	17.5%	35,043	21.9%	36,025	18.5%
22	120,988	67,966	78.0%	89,404	35.3%	106,307	13.8%	80,926	49.5%
24 - Coral Way Limited	67,217	40,683	65.2%	36,237	85.5%	57,468	17.0%	38,568	74.3%
27	204,016	135,146	51.0%	171,282	19.1%	178,022	14.6%	156,405	30.4%
29 (*)	11,893	10,750	10.6%	10,684	11.3%	10,086	17.9%	9,137	30.2%
31 - BUSWAY LOCAL	35,129	19,555	79.6%	29,125	20.6%	30,560	15.0%	22,050	59.3%
32	69,827	43,328	61.2%	56,027	24.6%	62,063	12.5%	45,396	53.8%
33	53,338	31,007	72.0%	40,918	30.4%	47,411	12.5%	31,806	67.7%
34 EXPRESS	36,134	20,318	77.8%	40,159	-10.0%	29,916	20.8%	19,313	87.1%
35	73,684	39,686	85.7%	59,041	24.8%	66,502	10.8%	49,096	50.1%
36	75,810	53,044	42.9%	61,606	23.1%	67,497	12.3%	51,031	48.6%
37	104,841	68,718	52.6%	82,870	26.5%	92,553	13.3%	81,446	28.7%
38	187,599	102,058	83.8%	167,379	12.1%	154,607	21.3%	128,771	45.7%
39 EXPRESS				17,853				5,948	
40	63,243	35,036	80.5%	40,497	56.2%	52,878	19.6%	33,289	90.0%
42	30,204	18,101	66.9%	20,825	45.0%	27,205	11.0%	20,518	47.2%
46 - LIBERTY CITY CONN. (*)	510	503	1.4%	814	-37.3%	455	12.1%	562	-9.3%
51 - FLAGLER MAX	93,577	60,155	55.6%	62,186	50.5%	80,295	16.5%	58,825	59.1%
52	35,653	21,219	68.0%	30,522	16.8%	33,073	7.8%	25,614	39.2%
54	89,841	57,147	57.2%	72,125	24.6%	79,616	12.8%	66,217	35.7%
55 MARLINS SHUTTLE									
56 (*)	8,500	6,355	33.8%	7,071	20.2%	8,053	5.6%	4,732	79.6%
57	12,461	6,555	90.1%	8,665	43.8%	10,151	22.8%	7,523	65.6%
62	52,087	32,933	58.2%	46,582	11.8%	47,102	10.6%	44,968	15.8%
71 (*)	19,094	13,693	39.4%	16,118	18.5%	16,745	14.0%	10,918	74.9%
72 (*)	19,686	14,881	32.3%	18,433	6.8%	18,802	4.7%	12,006	64.0%

## METROBUS TOTAL MONTHLY BOARDINGS BY ROUTE

Route	Total Month	Total Month	Percent Change	Total Month	Percent Change	Total Month	Percent Change	Total Month	Percent Change
	Mar-23	Mar-22	YOY	Feb-20	Current vs Feb-20	Feb-23	MOM	Mar-21	YO2Y
<b>Monthly Total</b>									
73	84,042	50,965	64.9%	48,767	72.3%	72,937	15.2%	39,406	113.3%
75	35,974	20,814	72.8%	31,994	12.4%	31,176	15.4%	31,274	15.0%
77	249,180	147,605	68.8%	174,833	42.5%	218,108	14.2%	184,891	34.8%
79 STREET MAX	13,255	6,300	110.4%	7,228	83.4%	12,045	10.0%		
82 - WESTCHESTER CIRC. (*)	1,837	759	142.0%	1,482	24.0%	1,369	34.2%	852	115.6%
87	51,130	31,353	63.1%	33,273	53.7%	46,100	10.9%	31,229	63.7%
88	71,551	44,307	61.5%	54,772	30.6%	63,406	12.8%	50,841	40.7%
93 - BISCAYNE MAX	85,812	50,991	68.3%	66,684	28.7%	71,849	19.4%	43,637	96.6%
95 EXPRESS	25,159	18,317	37.4%	33,796	-25.6%	20,826	20.8%	9,901	154.1%
99	49,910	29,891	67.0%	36,325	37.4%	40,851	22.2%	35,889	39.1%
101 - A (*)	6,589	4,997	31.9%	4,114	60.2%	5,456	20.8%	3,367	95.7%
102 - B	61,789	36,533	69.1%	42,683	44.8%	53,842	14.8%	33,918	82.2%
103 - C				11,682				9,092	
104	26,320	14,170	85.7%	20,351	29.3%	22,855	15.2%	10,644	147.3%
105 - E	40,345	26,962	49.6%	31,302	28.9%	36,265	11.3%	35,766	12.8%
107 - G	59,267	34,085	73.9%	43,178	37.3%	51,122	15.9%	36,990	60.2%
108 - H	17,037	10,379	64.1%	12,624	35.0%	15,019	13.4%	13,673	24.6%
110 - J	93,650	59,718	56.8%	66,481	40.9%	81,273	15.2%	78,573	19.2%
112 - L	261,385	162,223	61.1%	200,268	30.5%	233,408	12.0%	202,974	28.8%
113 - M	26,844	14,187	89.2%	21,548	24.6%	15,388	74.4%	17,258	55.5%
115 (*)	3,913	3,979	-1.7%	4,334	-9.7%	3,564	9.8%	5,558	-29.6%
119 - S	319,122	205,580	55.2%	242,257	31.7%	277,861	14.8%	248,782	28.3%
120 - BEACH MAX	209,099	136,107	53.6%	170,942	22.3%	187,799	11.3%	138,736	50.7%
132 TRI-RAIL (DORAL)	1,014	78	1200.0%	312	225.0%	782	29.7%	340	198.2%
135 (*)	39,823	20,875	90.8%	32,067	24.2%	36,114	10.3%	22,297	78.6%
136	3,639	2,499	45.6%	2,524	44.2%	2,778	31.0%	1,666	118.4%
137 - WEST DADE CONN.	64,441	35,062	83.8%	41,167	56.5%	55,786	15.5%	34,283	88.0%
150 - MIAMI BEACH AIRPORT FLYER	73,621	42,460	73.4%	51,651	42.5%	65,094	13.1%	40,933	79.9%
155 - BISCAYNE GARDENS CIRCULATOR (*)	1,054	836	26.1%	881	19.6%	858	22.8%	728	44.8%
175 - NW MIAMI-DADE EXPRESS				661					
183	98,412	58,890	67.1%	77,570	26.9%	86,489	13.8%	74,296	32.5%
195 EXPRESS - BROWARD BLVD				7,441					
196 EXPRESS - SHERIDAN ST				7,658					
200 - CUTLER BAY LOCAL	3,328	1,237	169.0%	3,984	-16.5%	3,974	-16.3%	2,098	58.6%
202 - LITTLE HAITI CONN. (*)	1,978	2,878	-31.3%	3,200	-38.2%	1,747	13.2%	3,852	-48.7%
204 KILLIAN KAT	17,233	9,933	73.5%	21,418	-19.5%	14,284	20.6%		



## METROBUS TOTAL MONTHLY BOARDINGS BY ROUTE

Route	Total Month	Total Month	Percent Change	Total Month	Percent Change	Total Month	Percent Change	Total Month	Percent Change
	Mar-23	Mar-22	YOY	Feb-20	Current vs Feb-20	Feb-23	MOM	Mar-21	YO2Y
<b>Monthly Total</b>									
207 (7st) - LITTLE HAVANA CIRC	49,991	28,366	76.2%	38,127	31.1%	44,929	11.3%	22,899	118.3%
208 (8st) - LITTLE HAVANA CIRC	49,339	24,132	104.5%	35,018	40.9%	43,708	12.9%	26,077	89.2%
210 - SKYLAKE CIRC (*)	7,658	7,217	6.1%	7,033	8.9%	6,953	10.1%	9,197	-16.7%
211 - OVERTOWN CIRC. (*)	1,976	1,935	2.1%	1,159	70.5%	1,741	13.5%	1,003	97.0%
212 - SWEETWATER CIRC. (*)	522	489	6.7%	295	76.9%	533	-2.1%	328	59.1%
217 - BUNCHE PARK CIRC (*)	1,351	1,652	-18.2%	1,949	-30.7%	1,222	10.6%	1,548	-12.7%
238 EAST/WEST CONN.	13,893	7,548	84.1%	8,987	54.6%	12,147	14.4%	8,890	56.3%
241 TUTTLE LIMITED	10,006	2,193	356.3%			8,174	22.4%		
246 - NIGHT OWL	1,883	1,159	62.5%	2,641	-28.7%	1,554	21.2%	2,612	-27.9%
248 - PRINCETON CIRCULATOR (*)	2,145	1,652	29.8%	2,690	-20.3%	3,065	-30.0%	2,189	-2.0%
252 - CORAL REEF MAX	27,659	15,579	77.5%	19,325	43.1%	24,856	11.3%	13,294	108.1%
254 - BROWNSVILLE CIRC. (*)	143	131	9.2%	384	-62.8%	115	24.3%	303	-52.8%
267 - LUDLAM LIMITED (*)	4,399	2,832	55.3%	2,978	47.7%	3,516	25.1%	2,388	84.2%
272 SUNSET KAT (*)	9,432	7,060	33.6%	11,004	-14.3%	8,033	17.4%	5,913	59.5%
277 - 7th AVENUE MAX	19,473	10,616	83.4%	13,669	42.5%	15,730	23.8%	12,791	52.2%
286 - NORTH POINTE CIRC. (*)	2,431	1,519	60.0%	2,145	13.3%	2,076	17.1%	1,024	137.4%
287 - SAGA BAY MAX	7,739	4,838	60.0%	7,160	8.1%	7,353	5.2%	3,815	102.9%
288 - KENDALL CRUISER	11,379	9,054	25.7%	15,249	-25.4%	9,334	21.9%		
295 EXPRESS - BROWARD BLVD - CIVIC CENTER				4,668					
296 EXPRESS - SHERIDAN ST - CIVIC CENTER				4,297					
297-27th AVENUE ORANGE MAX	32,007	18,595	72.1%	27,125	18.0%	25,039	27.8%	20,563	55.7%
301 DADE-MONROE EXPRESS (*)	29,820	23,008	29.6%	23,838	25.1%	24,067	23.9%	28,302	5.4%
302 CARD SOUND EXPRESS (*)	3,855	2,077	85.6%	2,236	72.4%	3,349	15.1%	2,456	57.0%
338 - WEEKEND EXPRESS	1,694	889	90.6%	2,191	-22.7%	2,133	-20.6%	1,078	57.1%
344 (*)	1,523	1,031	47.7%	1,919	-20.6%	1,466	3.9%	1,777	-14.3%
500	2,060	312	560.3%	2,301	-10.5%	2,123	-3.0%	1,901	8.4%
836 EXPRESS	6,306	3,152	100.1%			4,887	29.0%	557	1032.1%
837 EXPRESS	2,937					2,210	32.9%		
12/21 WEEKEND INTERL.	12,321	12,697	-3.0%	20,830	-40.8%	16,696	-26.2%	16,353	-24.7%
GREEN HILLS SHUTTLE (*)	41	24	70.8%	36	13.9%	16	156.3%	35	17.1%
KINGS CREEK SHUTTLE (*)	84	70	20.0%	52	61.5%	76	10.5%	30	180.0%
SIERRA LAKES SHUTTLE (*)	100	58	72.4%	180	-44.4%	63	58.7%	65	53.8%
ROBERT SHARP SHUTTLE (*)	93	91	2.2%	38	144.7%	90	3.3%	97	-4.1%
AHEPA SHUTTLE (*)	109	89	22.5%	83	31.3%	65	67.7%	79	38.0%
FEDERATION GARDENS SHUTTLE (*)	110	82	34.1%	142	-22.5%	80	37.5%	88	25.0%
<b>Total</b>	<b>5,183,872</b>	<b>3,218,562</b>	<b>61.1%</b>	<b>4,123,083</b>	<b>25.7%</b>	<b>4,526,317</b>	<b>14.5%</b>	<b>3,660,639</b>	<b>41.6%</b>

## YEAR-OVER-YEAR BUS RIDERSHIP BY ROUTE SERVICE TYPE

Boardings by Service Type and Route	Average Weekday	Average Weekday	Percent Change	Average Saturday	Average Saturday	Percent Change	Average Sunday	Average Sunday	Percent Change	Total Monthly	Total Monthly	Percent Change
	Mar-23	Mar-22	23 vs 22	Mar-23	Mar-22	23 vs 22	Mar-23	Mar-22	23 vs 22	Mar-23	Mar-22	23 vs 22
<b>Directly Operated Express Routes (1)</b>												
34 EXPRESS	1,571	883	77.8%							36,134	20,318	77.8%
39 EXPRESS												
95-EXPRESS	1,094	796	37.4%							25,159	18,317	37.4%
150-MIAMI BEACH AIRPORT FLYER	2,432	1,382	75.9%	2,140	1,366	56.7%	2,283	1,303	75.3%	73,621	42,460	73.4%
175 - NW MIAMI-DADE EXPRESS												
195 EXPRESS - BROWARD BLVD												
196 EXPRESS - SHERIDAN ST												
295 EXPRESS - BROWARD BLVD - CIVIC CENTER												
296 EXPRESS - SHERIDAN ST - CIVIC CENTER												
204 KAT-KILLIAN	749	432								17,233	9,933	73.5%
288 KENDALL CRUISER	495	394								11,379	9,054	25.7%
338 - WEEKEND EXPRESS				231	150	54.0%	193	147	31.6%	1,694	889	90.6%
836 EXPRESS	274	137	100.1%							6,306	3,152	100.1%
837 EXPRESS	128									2,937		
<b>Subtotal Express Routes</b>	<b>6,742</b>	<b>4,024</b>	<b>67.5%</b>	<b>2,370</b>	<b>1,515</b>	<b>56.4%</b>	<b>2,476</b>	<b>1,449</b>	<b>70.9%</b>	<b>174,463</b>	<b>104,123</b>	<b>67.6%</b>
<b>Percentage of All Bus Routes</b>	<b>3.6%</b>	<b>3.4%</b>		<b>2.0%</b>	<b>2.1%</b>		<b>2.8%</b>	<b>2.7%</b>		<b>3.4%</b>	<b>3.2%</b>	
<b>Contracted Routes</b>												
1	217	168	29.2%	162	133	22.3%	158	146	8.1%	6,273	4,978	26.0%
29	517	467	10.6%							11,893	10,750	10.6%
46 - LIBERTY CITY CONN.	22	22	1.4%							510	503	1.4%
56	370	276	33.8%							8,500	6,355	33.8%
71	756	522	44.8%	249	280	-11.0%	177	142	25.1%	19,094	13,693	39.4%
72	719	548	31.1%	417	288	44.8%	373	280	33.2%	19,686	14,881	32.3%
82 - WESTCHESTER CIRC	73	27	172.8%	40	36	10.4%				1,837	759	142.0%
101 - A	273	196	39.6%	33	75	-56.1%	43	49	-11.3%	6,589	4,997	31.9%
115	147	137	7.3%	69	126	-45.5%	66	83	-20.5%	3,913	3,979	-1.7%
155 - BISCAYNE GARDENS CIRC	46	36	26.1%							1,054	836	26.1%
202 - LITTLE HAITI CONN.	77	107	-27.9%	25	53	-53.3%	27	53	-48.1%	1,978	2,878	-31.3%
210 - SKYLAKE CIRC	303	274	10.5%	91	133	-31.5%	81	95	-14.7%	7,658	7,217	6.1%
211-OVERTOWN CIRC	86	84	2.1%							1,976	1,935	2.1%
212-SWEETWATER CIRC	23	21	6.7%							522	489	6.7%
217 - BUNCHE PARK CIRC	59	72	-18.2%							1,351	1,652	-18.2%
246 - NIGHT OWL	60	35	70.4%	68	56	21.3%	59	32	85.0%	1,883	1,159	62.5%
248 - PRINCETON CIRCULATOR	93	72	29.8%							2,145	1,652	29.8%
254-BROWNSVILLE CIRC	6	6	9.2%							143	131	9.2%
286-NORTH POINTE CIRC	93	57	63.8%	71	52	36.5%				2,431	1,519	60.0%
344	66	45	47.7%							1,523	1,031	47.7%
<b>Subtotal Contracted Reg. &amp; Circ. Routes</b>	<b>4,006</b>	<b>3,172</b>	<b>26.3%</b>	<b>1,225</b>	<b>1,232</b>	<b>-0.6%</b>	<b>983</b>	<b>878</b>	<b>12.0%</b>	<b>100,959</b>	<b>81,394</b>	<b>24.0%</b>
<b>Percentage of All Bus Routes</b>	<b>2.1%</b>	<b>2.7%</b>		<b>1.0%</b>	<b>1.7%</b>		<b>1.1%</b>	<b>1.6%</b>		<b>1.9%</b>	<b>2.5%</b>	

(1) Several express routes were suspended beginning at the end of March 2020, due to the SARS-CoV-2 pandemic, while other routes had alignment and schedule modifications made to them, in an ongoing effort to optimize service delivery..

## YEAR-OVER-YEAR BUS RIDERSHIP BY ROUTE SERVICE TYPE

Boardings by Service Type and Route	Average Weekday	Average Weekday	Percent Change	Average Saturday	Average Saturday	Percent Change	Average Sunday	Average Sunday	Percent Change	Total Monthly	Total Monthly	Percent Change
	Mar-23	Mar-22	23 vs 22	Mar-23	Mar-22	23 vs 22	Mar-23	Mar-22	23 vs 22	Mar-23	Mar-22	23 vs 22
<b>Contracted Express Routes</b>												
272 SUNSET-KAT	410	307	33.6%							9,432	7,060	33.6%
301-DADE MONROE EXPRESS	993	761	30.6%	909	725	25.3%	835	653	28.0%	29,820	23,008	29.6%
302-CARD SOUND EXPRESS	136	71	90.9%	108	60	80.7%	72	49	46.7%	3,855	2,077	85.6%
<b>Subtotal Contracted Express Routes</b>	<b>1,540</b>	<b>1,139</b>	<b>35.2%</b>	<b>1,016</b>	<b>785</b>	<b>29.5%</b>	<b>907</b>	<b>701</b>	<b>29.3%</b>	<b>43,107</b>	<b>32,145</b>	<b>34.1%</b>
<b>Percentage of All Bus Routes</b>	<b>0.8%</b>	<b>1.0%</b>		<b>0.8%</b>	<b>1.1%</b>		<b>1.0%</b>	<b>1.3%</b>		<b>0.8%</b>	<b>1.0%</b>	
<b>Limited Stop Routes</b>												
24-CORAL WAY LIMITED	2,399	1,433	67.4%	1,723	1,002	72.0%	1,290	931	38.6%	67,217	40,683	65.2%
51-FLAGLER MAX	4,069	2,615	55.6%							93,577	60,155	55.6%
79 STREET MAX	576	274	110.4%							13,255	6,300	110.4%
93 - BISCAYNE MAX	3,731	2,217	68.3%							85,812	50,991	68.3%
120 - BEACH MAX	7,210	4,836	49.1%	6,764	3,806	77.7%	4,056	2,416	67.9%	209,099	136,107	53.6%
241 TUTTLE LIMITED	367	82	349.0%	206	33	529.0%	185	46	307.1%	10,006	2,193	356.3%
252-CORAL REEF MAX	1,063	598	77.6%	439	267	64.1%	365	186	95.7%	27,659	15,579	77.5%
267-LUDLAM LIMITED (contracted)	191	123	55.3%							4,399	2,832	55.3%
277-7TH AVENUE MAX	847	462	83.4%							19,473	10,616	83.4%
287-SAGA BAY MAX	336	210	60.0%							7,739	4,838	60.0%
297-27th AVENUE ORANGE MAX	1,392	808	72.1%							32,007	18,595	72.1%
<b>Subtotal Limited Stop Routes</b>	<b>22,180</b>	<b>13,659</b>	<b>62.4%</b>	<b>9,131</b>	<b>5,108</b>	<b>78.8%</b>	<b>5,896</b>	<b>3,578</b>	<b>64.8%</b>	<b>570,243</b>	<b>348,889</b>	<b>63.4%</b>
<b>Percentage of All Bus Routes</b>	<b>11.7%</b>	<b>11.6%</b>		<b>7.5%</b>	<b>7.1%</b>		<b>6.7%</b>	<b>6.6%</b>		<b>11.0%</b>	<b>10.8%</b>	
<b>Directly Operated Free Routes</b>												
132 -TRI-RAIL DORAL	44	5	747.8%							1,014	78	1200.0%
200-CUTLER BAY LOCAL	106	66	61.3%	90	58	54.7%	131	1	13025.0%	3,328	1,237	169.0%
<b>Subtotal Free Directly Operated Routes</b>	<b>150</b>	<b>71</b>	<b>111.5%</b>	<b>90</b>	<b>58</b>	<b>54.7%</b>	<b>131</b>	<b>1</b>	<b>13025.0%</b>	<b>4,342</b>	<b>1,315</b>	<b>230.2%</b>
<b>Percentage of All Bus Routes</b>	<b>0.1%</b>	<b>0.1%</b>		<b>0.1%</b>	<b>0.1%</b>		<b>0.1%</b>	<b>0.0%</b>		<b>0.1%</b>	<b>0.0%</b>	
<b>Shuttles</b>												
55-MARLINS SHUTTLE												
<b>Percentage of All Bus Routes</b>												
<b>Contractor-Operated Lifeline Routes</b>												
GREEN HILLS SHUTTLE	10	6	70.8%							41	24	70.8%
KINGS CREEK SHUTTLE	21	14	50.0%							84	70	20.0%
SIERRA LAKES SHUTTLE	20	15	37.9%							100	58	72.4%
ROBERT SHARP SHUTTLE	19	18	2.2%							93	91	2.2%
AHEPA SHUTTLE	22	18	22.5%							109	89	22.5%
FEDERATION GARDENS SHUTTLE				28	21	34.1%				110	82	34.1%
<b>Subtotal Contractor-Operated Lifeline Routes</b>	<b>92</b>	<b>71</b>	<b>30.0%</b>	<b>28</b>	<b>21</b>	<b>34.1%</b>				<b>537</b>	<b>414</b>	<b>29.7%</b>
<b>Percentage of All Bus Routes</b>	<b>0.0%</b>	<b>0.1%</b>		<b>0.0%</b>	<b>0.0%</b>					<b>0.0%</b>	<b>0.0%</b>	
<b>All Other (Regular) Routes</b>												
	154,366	95,934	60.9%	107,207	63,473	68.9%	77,747	47,482	63.7%	4,290,221	2,650,282	61.9%
<b>Percentage of All Bus Routes</b>	<b>81.6%</b>	<b>81.3%</b>		<b>88.6%</b>	<b>87.9%</b>		<b>88.2%</b>	<b>87.8%</b>		<b>82.8%</b>	<b>82.3%</b>	
<b>Total Bus System</b>	<b>189,075</b>	<b>118,069</b>	<b>60.1%</b>	<b>121,066</b>	<b>72,191</b>	<b>67.7%</b>	<b>88,140</b>	<b>54,089</b>	<b>63.0%</b>	<b>5,183,872</b>	<b>3,218,562</b>	<b>61.1%</b>

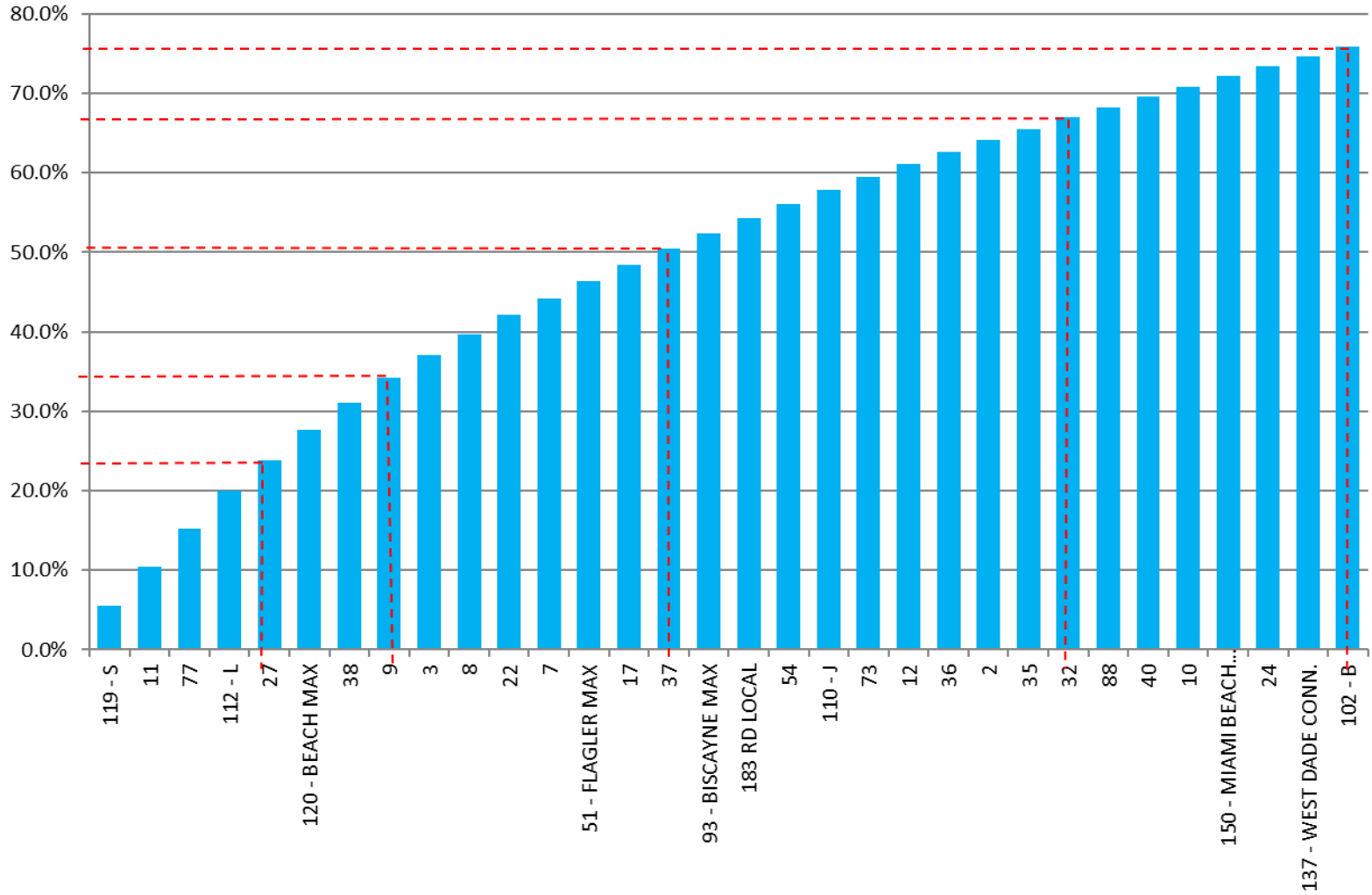
## Bus Routes as Ranked by Percentage of Average Weekday Ridership March 2023

Rank	Route	Average Weekday	Percent Share	Cumul Pct Share	Rank	Route	Average Weekday	Percent Share	Cumul Pct Share	Rank	Route	Average Weekday	Percent Share	Cumul Pct Share
1	119	10,553	5.6%	5.6%	36	33	1,968	1.0%	80.2%	71	836	274	0.1%	98.8%
2	11	9,171	4.9%	10.4%	37	62	1,858	1.0%	81.2%	72	101	273	0.1%	98.9%
3	77	9,107	4.8%	15.2%	38	21	1,857	1.0%	82.2%	73	1	217	0.1%	99.1%
4	112	8,914	4.7%	20.0%	39	207	1,810	1.0%	83.1%	74	267	191	0.1%	99.2%
5	27	7,399	3.9%	23.9%	40	99	1,806	1.0%	84.1%	75	136	158	0.1%	99.2%
6	120	7,210	3.8%	27.7%	41	208	1,749	0.9%	85.0%	76	115	147	0.1%	99.3%
7	38	6,272	3.3%	31.0%	42	19	1,589	0.8%	85.8%	77	302	136	0.1%	99.4%
8	9	6,091	3.2%	34.2%	43	34	1,571	0.8%	86.7%	78	837	128	0.1%	99.5%
9	3	5,298	2.8%	37.0%	44	135	1,565	0.8%	87.5%	79	200	106	0.1%	99.5%
10	8	5,102	2.7%	39.7%	45	105	1,469	0.8%	88.3%	80	286	93	0.0%	99.6%
11	22	4,445	2.4%	42.1%	46	75	1,412	0.7%	89.0%	81	248	93	0.0%	99.6%
12	7	4,076	2.2%	44.2%	47	297	1,392	0.7%	89.7%	82	211	86	0.0%	99.7%
13	51	4,069	2.2%	46.4%	48	52	1,326	0.7%	90.4%	83	202	77	0.0%	99.7%
14	17	3,849	2.0%	48.4%	49	31	1,209	0.6%	91.1%	84	82	73	0.0%	99.7%
15	37	3,756	2.0%	50.4%	50	42	1,099	0.6%	91.7%	85	500	69	0.0%	99.8%
16	93	3,731	2.0%	52.4%	51	95	1,094	0.6%	92.2%	86	344	66	0.0%	99.8%
17	183	3,595	1.9%	54.3%	52	252	1,063	0.6%	92.8%	87	246	60	0.0%	99.8%
18	54	3,318	1.8%	56.0%	53	301	993	0.5%	93.3%	88	217	59	0.0%	99.9%
19	110	3,302	1.7%	57.8%	54	104	987	0.5%	93.9%	89	155	46	0.0%	99.9%
20	73	3,282	1.7%	59.5%	55	113	912	0.5%	94.3%	90	132	44	0.0%	99.9%
21	12	3,041	1.6%	61.1%	56	277	847	0.4%	94.8%	91	212	23	0.0%	99.9%
22	36	2,799	1.5%	62.6%	57	71	756	0.4%	95.2%	92	46	22	0.0%	99.9%
23	2	2,779	1.5%	64.1%	58	204	749	0.4%	95.6%	93	AS	22	0.0%	100.0%
24	35	2,726	1.4%	65.5%	59	72	719	0.4%	96.0%	94	KC	21	0.0%	100.0%
25	32	2,693	1.4%	66.9%	60	238	604	0.3%	96.3%	95	SL	20	0.0%	100.0%
26	88	2,524	1.3%	68.3%	61	79	576	0.3%	96.6%	96	RS	19	0.0%	100.0%
27	40	2,467	1.3%	69.6%	62	108	570	0.3%	96.9%	97	GH	10	0.0%	100.0%
28	10	2,434	1.3%	70.9%	63	57	542	0.3%	97.2%	98	254	6	0.0%	100.0%
29	150	2,432	1.3%	72.2%	64	29	517	0.3%	97.5%	entirely contracted				
30	24	2,399	1.3%	73.4%	65	288	495	0.3%	97.7%					
31	137	2,351	1.2%	74.7%	66	272	410	0.2%	97.9%					
32	102	2,302	1.2%	75.9%	67	56	370	0.2%	98.1%					
33	107	2,115	1.1%	77.0%	68	241	367	0.2%	98.3%					
34	87	2,037	1.1%	78.1%	69	287	336	0.2%	98.5%					
35	16	2,010	1.1%	79.1%	70	210	303	0.2%	98.7%					
<b>Total Boardings</b>												<b>189,075</b>	<b>100.0%</b>	<b>100.0%</b>

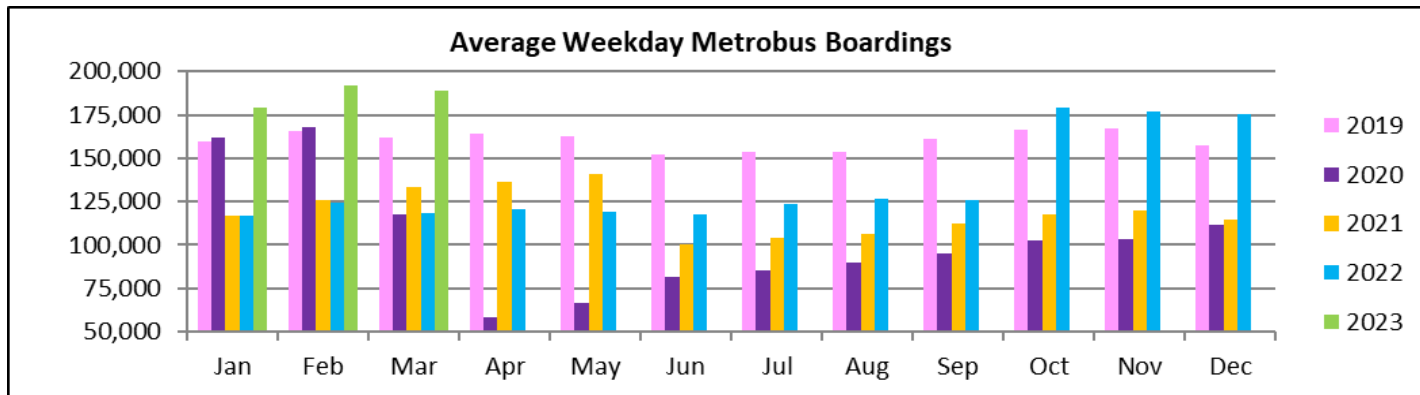
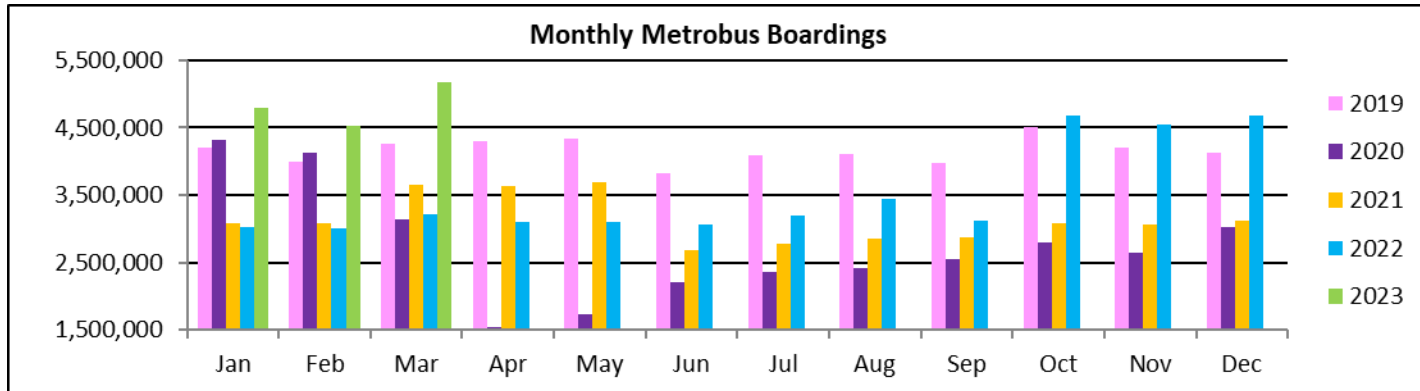
(1) Average weekday ridership rounded to the nearest unit.

(2) Includes the five Lifeline Shuttles that operate on weekdays: Ahepa, Green Hills, Kings Creek, Robert Sharp and Sierra Lakes.

**Bus - Cumulative Percentage Average Weekday Ridership Share  
Top 1/4, 1/3, 1/2, 2/3 and 3/4 of Routes**



## TOTAL MONTHLY AND AVERAGE WEEKDAY RIDERSHIP YEAR OVER YEAR COMPARISON CHARTS – METROBUS

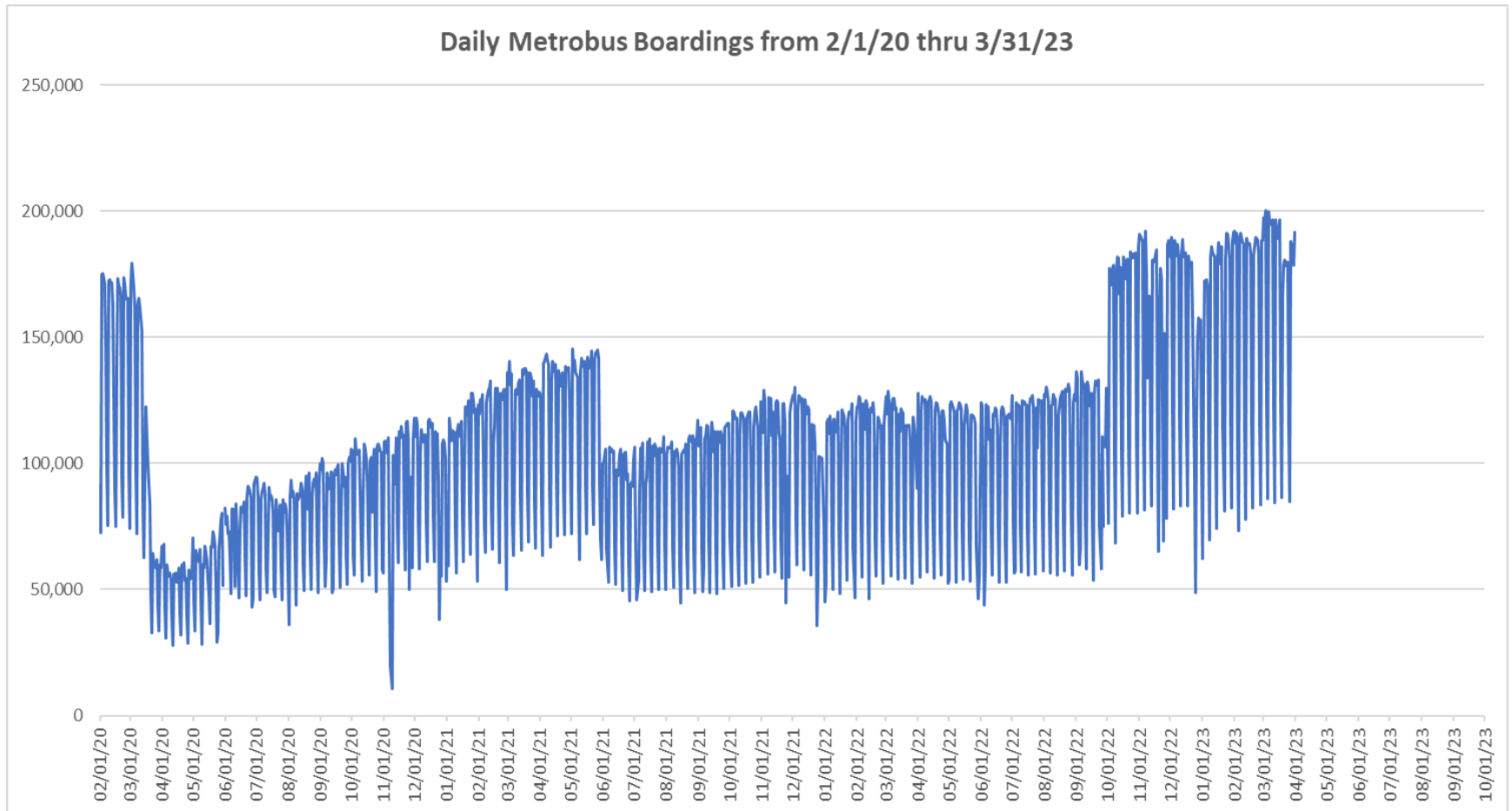


**“TOP 5 / BOTTOM 5” BUS ROUTES AVERAGE WEEKDAY RIDERSHIP PERFORMANCE  
YEAR OVER YEAR COMPARISONS**

<b>Route</b>	<b>Mar-23</b>	<b>Mar-22</b>	<b>Absolute Delta (1)</b>	<b>Percent Delta (2)</b>
<b>77</b>	9,107	5,372	3,735	69.5%
<b>119 - S</b>	10,553	7,137	3,416	47.9%
<b>112 - L</b>	8,914	5,652	3,262	57.7%
<b>11</b>	9,171	5,929	3,242	54.7%
<b>38</b>	6,272	3,486	2,787	79.9%
<b>202 - LITTLE HAITI CONN. (*)</b>	77	107	-30	-27.9%
<b>217 - BUNCHE PARK CIRC (*)</b>	59	72	-13	-18.2%
<b>46 - LIBERTY CITY CONN. (*)</b>	22	22	0	1.4%
<b>254 - BROWNSVILLE CIRC. (*)</b>	6	6	1	9.2%
<b>212 - SWEETWATER CIRC. (*)</b>	23	21	1	6.7%

- (1) Averages rounded to the nearest boarding, data as reported by farebox (NFS) and/or automatic passenger counter (APC) system, depending on year; Lifeline shuttles excluded.
- (2) As a result of the SARS-CoV-2 pandemic, rides were fare-free beginning March 22, 2020. Fares were reinstated June 1, 2021, and ridership data from the farebox rather than the APC system is utilized from that date thru the end of September 2022. Beginning October 1, 2022, ridership is again reported from the APC system coupled with a new enhanced sensor system.
- (\*) Contracted route.

## DAILY METROBUS RIDERSHIP SINCE FEBRUARY 1, 2020



- (1) National Emergency was declared on 3/13/20 as a result of the SARS-CoV-2 pandemic.
- (2) There was no Metrobus, Metrorail and Metromover service on 5/31/20, as a safety precaution, and no service for any of the four modes on 9/28/22 as a result of Hurricane Ian..
- (3) The dip at the start of the second week of November 2020 is due to Hurricane Eta.
- (4) The reduction seen beginning 6/1/21 is partly due to the resumption of fares and partly the result of resuming reporting Cubic farebox data rather than bus APC counts; bus APC counts then replace farebox counts beginning on 10/1/22.
- (5) Periodic (weekly) variations are prominent, since weekday ridership is almost always significantly higher than weekend or holiday ridership.



## METROBUS PARKING PATRONAGE SUMMARY

### March 2023

PARK-RIDE LOT	ACTUAL AVAILABLE SPACES	ACTUAL OCCUPANCY	PERCENT OCCUPANCY
Transitway / SW 152nd St	200	137	69%
Transitway / SW 168th St (*)	149	0	0%
Transitway / SW 200th Street (effective February 2020)	100	34	34%
Transitway / SW 112 Ave (Target)	450	140	31%
Transitway / SW 244th St	95	71	75%
Transitway / SW 296th St	139	15	11%
Transitway / SW 344th St	248	159	64%
Coral Reef Drive 117/ Turnpike	95	85	89%
Golden Glades Facility	2,150	329	15%
Hammocks Town Center (SW 152 Ave / SW 104 St)	50	14	28%
Kendall Dr./SW 127th Ave	161	15	9%
West Kendall Transit Term (Kendall Dr / SW162 Ave)	40	16	40%
NW 7th Avenue Transit Village (NW 7 Ave / NW 62 St)	25	21	84%
Miami Gardens Dr. / NW 73rd Ave	136	0	0%
Dolphin Station (effective Mar 2020)	348	74	21%
Tamiami Station (eff 11-2022)	442	45	10%
I-75 / Miami Gardens Dr (**)	298	0	0%
<b>TOTAL</b>	<b>5,126</b>	<b>1,155</b>	<b>23%</b>

(\*) Closed for construction beginning January 2022

(\*\*) Route 175 Suspended 3/27/2020

# Metrorail



March 2023

## METRORAIL AVERAGE WEEKDAY BOARDINGS BY STATION (†)

<b>Weekdays</b>	<b>Average Weekday</b>	<b>Average Weekday</b>	<b>Percent Change</b>	<b>Average Weekday</b>	<b>Percent Change</b>	<b>Average Weekday</b>	<b>Percent Change</b>	<b>Average Weekday</b>	<b>Percent Change</b>
<b>STATIONS</b>	<b>Mar-23</b>	<b>Mar-22</b>	<b>YOY</b>	<b>Feb-20</b>	<b>Current vs Feb-20</b>	<b>Feb-23</b>	<b>MOM</b>	<b>Mar-21</b>	<b>YO2Y</b>
ALLAPATTAH	1,691	1,322	27.9%	1,942	-12.9%	1,660	1.9%	1,299	30.2%
BRICKELL	5,326	4,252	25.3%	6,529	-18.4%	5,386	-1.1%	4,350	22.4%
BROWNSVILLE	701	590	18.9%	862	-18.7%	719	-2.5%	720	-2.6%
CIVIC CENTER	4,179	3,365	24.2%	6,143	-32.0%	4,190	-0.3%	2,878	45.2%
COCONUT GROVE	1,521	1,292	17.8%	1,795	-15.3%	1,223	24.4%	1,095	38.9%
CULMER	1,044	867	20.5%	1,392	-25.0%	1,051	-0.7%	917	13.8%
DADELAND NORTH	3,848	3,350	14.8%	5,926	-35.1%	3,993	-3.6%	3,589	7.2%
DADELAND SOUTH	4,478	3,651	22.6%	7,150	-37.4%	4,556	-1.7%	3,305	35.5%
DOUGLAS ROAD		2,549		3,624		2,121		1,526	
DR. MARTIN LUTHER KING, JR.	856	770	11.2%	1,157	-26.0%	848	0.9%	810	5.7%
EARLINGTON HEIGHTS	1,326	1,106	19.9%	1,662	-20.2%	1,354	-2.0%	1,020	30.0%
GOVERNMENT CENTER	7,092	5,730	23.8%	10,557	-32.8%	7,024	1.0%	3,887	82.4%
HIALEAH	1,067	951	12.2%	1,253	-14.8%	1,219	-12.5%	761	40.2%
MIAMI INTERNATIONAL AIRPORT	1,417	1,134	25.0%	1,711	-17.2%	1,323	7.1%	779	81.9%
NORTHSIDE	1,328	1,060	25.3%	1,476	-10.0%	1,358	-2.2%	1,133	17.1%
OKEECHOBEE	909	716	26.9%	1,164	-21.9%	927	-2.0%	704	29.0%
OVERTOWN / ARENA	1,694	1,242	36.4%	2,274	-25.5%	1,663	1.8%	844	100.8%
PALMETTO	1,292	1,014	27.4%	1,543	-16.3%	1,293	0.0%	854	51.4%
SANTA CLARA	700	547	27.9%	812	-13.8%	721	-2.9%	539	29.8%
SOUTH MIAMI	2,013	1,712	17.6%	3,015	-33.2%	2,111	-4.6%	1,194	68.5%
TRI-RAIL	1,181	897	31.7%	1,207	-2.1%	1,151	2.6%	805	46.7%
UNIVERSITY	1,951	1,507	29.4%	2,784	-29.9%	2,165	-9.9%	892	118.6%
VIZCAYA	1,190	942	26.3%	1,390	-14.4%	1,190	0.0%	795	49.7%
<b>TOTAL</b>	<b>46,804</b>	<b>40,566</b>	<b>15.4%</b>	<b>67,367</b>	<b>-30.5%</b>	<b>49,246</b>	<b>-5.0%</b>	<b>34,699</b>	<b>34.9%</b>

(†) In this table and those which follow, "YOY" stands for "year-over-year", "MOM" for "month-over-month" and "YO2Y" for "year over two years", i.e., current month vs 12 months prior, one month prior and 24 months prior, respectively.

(††) Due to effects from the SARS-CoV-2 pandemic; rides were fare-free beginning March 22, 2020; fares were reinstated on June 1, 2021, in part accounting for the drop in ridership from May 2021.

(\*) There was no passenger counts for March 2023 at Douglas Road Station, due to construction.

## METRORAIL AVERAGE SATURDAY BOARDINGS BY STATION

<b>Saturdays</b>	Average Saturday	Average Saturday	Percent Change	Average Saturday	Percent Change	Average Saturday	Percent Change	Average Saturday	Percent Change
<b>STATIONS</b>	Mar-23	Mar-22	YOY	Feb-20	Current vs Feb-20	Feb-23	MOM	Mar-21	YO2Y
ALLAPATTAH	957	817	17.1%	1,051	-9.0%	904	5.9%	843	13.5%
BRICKELL	2,729	2,416	12.9%	2,811	-2.9%	2,433	12.2%	2,662	2.5%
BROWNSVILLE	427	379	12.8%	520	-17.8%	454	-5.8%	498	-14.1%
CIVIC CENTER	781	692	12.9%	959	-18.6%	759	2.9%	743	5.2%
COCONUT GROVE	989	798	23.9%	928	6.5%	779	27.0%	711	39.1%
CULMER	533	491	8.5%	721	-26.1%	488	9.2%	554	-3.8%
DADELAND NORTH	1,567	1,515	3.4%	1,994	-21.4%	1,407	11.4%	1,858	-15.6%
DADELAND SOUTH	2,032	1,758	15.6%	2,625	-22.6%	1,924	5.6%	2,033	-0.1%
DOUGLAS ROAD		1,312		1,319				752	
DR. MARTIN LUTHER KING, JR.	483	422	14.4%	625	-22.7%	480	0.5%	534	-9.6%
EARLINGTON HEIGHTS	770	710	8.4%	935	-17.7%	730	5.5%	673	14.4%
GOVERNMENT CENTER	4,165	3,823	8.9%	4,262	-2.3%	2,819	47.7%	2,348	77.3%
HIALEAH	558	483	15.5%	583	-4.2%	602	-7.2%	449	24.3%
MIAMI INTERNATIONAL AIRPORT	1,094	947	15.5%	1,330	-17.8%	961	13.8%	697	57.0%
NORTHSIDE	846	700	20.9%	878	-3.7%	825	2.5%	842	0.5%
OKEECHOBEE	333	323	2.9%	408	-18.6%	343	-3.1%	369	-9.9%
OVERTOWN / ARENA	671	589	13.9%	678	-1.0%	568	18.2%	471	42.5%
PALMETTO	497	383	29.6%	458	8.4%	427	16.3%	340	46.0%
SANTA CLARA	375	308	21.9%	422	-11.1%	363	3.3%	317	18.3%
SOUTH MIAMI	1,046	920	13.7%	1,256	-16.7%	1,004	4.1%	650	60.8%
TRI-RAIL	625	487	28.3%	614	1.8%	565	10.6%	518	20.6%
UNIVERSITY	881	696	26.6%	714	23.3%	837	5.3%	531	65.7%
VIZCAYA	603	545	10.7%	622	-3.0%	511	18.1%	479	25.9%
<b>TOTAL</b>	<b>22,958</b>	<b>21,513</b>	<b>6.7%</b>	<b>26,714</b>	<b>-14.1%</b>	<b>20,180</b>	<b>13.8%</b>	<b>19,870</b>	<b>15.5%</b>

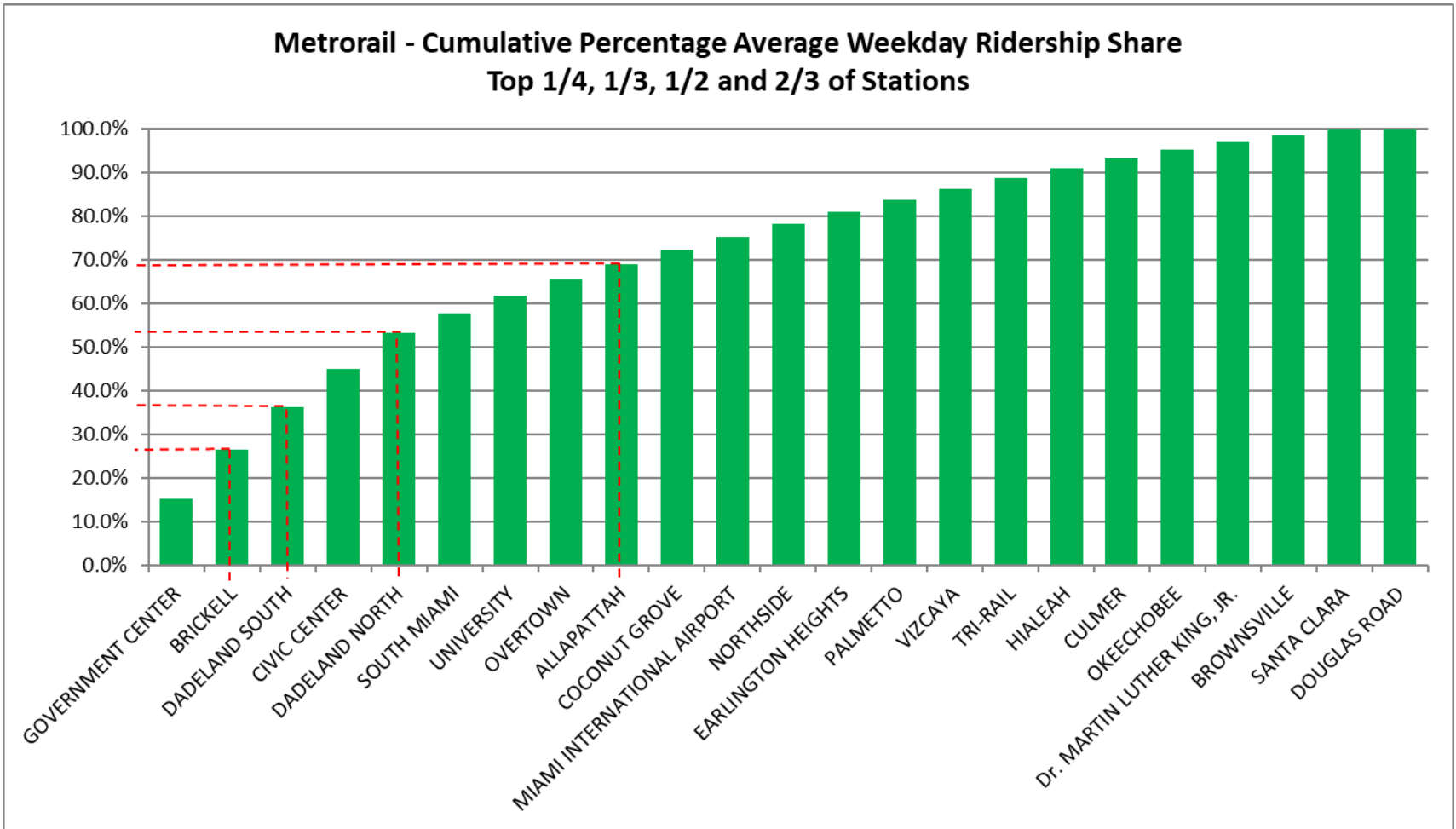
## METRORAIL AVERAGE SUNDAY BOARDINGS BY STATION

<b>Sundays</b>	Average Sunday	Average Sunday	Percent Change	Average Sunday	Percent Change	Average Sunday	Percent Change	Average Sunday	Percent Change
<b>STATIONS</b>	Mar-23	Mar-22	YOY	Feb-20	Current vs Feb-20	Feb-23	MOM	Mar-21	YO2Y
ALLAPATTAH	691	590	17.2%	791	-12.6%	643	7.5%	605	14.3%
BRICKELL	2,077	1,893	9.7%	2,379	-12.7%	1,886	10.1%	2,112	-1.7%
BROWNSVILLE	314	279	12.6%	406	-22.7%	290	8.1%	358	-12.2%
CIVIC CENTER	606	534	13.4%	791	-23.5%	563	7.6%	540	12.2%
COCONUT GROVE	734	599	22.4%	838	-12.5%	543	35.1%	512	43.4%
CULMER	389	386	0.8%	616	-36.9%	326	19.2%	443	-12.4%
DADELAND NORTH	1,092	1,107	-1.3%	1,685	-35.2%	990	10.3%	1,306	-16.4%
DADELAND SOUTH	1,538	1,288	19.4%	2,210	-30.4%	1,486	3.5%	1,491	3.1%
DOUGLAS ROAD		911		1,090				432	
DR. MARTIN LUTHER KING, JR.	364	351	3.8%	506	-28.1%	345	5.4%	393	-7.5%
EARLINGTON HEIGHTS	604	618	-2.3%	799	-24.4%	553	9.3%	508	19.0%
GOVERNMENT CENTER	3,592	3,108	15.6%	4,044	-11.2%	2,371	51.5%	1,775	102.4%
HIALEAH	415	363	14.3%	472	-12.1%	429	-3.3%	330	25.7%
MIAMI INTERNATIONAL AIRPORT	1,160	890	30.4%	1,343	-13.6%	1,010	14.9%	669	73.4%
NORTHSIDE	633	525	20.6%	653	-3.0%	622	1.9%	611	3.6%
OKEECHOBEE	242	167	44.6%	273	-11.6%	220	9.9%	212	14.2%
OVERTOWN / ARENA	502	471	6.5%	544	-7.8%	431	16.4%	405	24.0%
PALMETTO	265	233	14.0%	336	-21.2%	247	7.3%	201	31.8%
SANTA CLARA	252	206	22.5%	280	-9.9%	240	5.0%	222	13.5%
SOUTH MIAMI	750	669	12.1%	987	-23.9%	703	6.7%	478	57.0%
TRI-RAIL	438	369	18.8%	528	-17.1%	403	8.6%	379	15.6%
UNIVERSITY	650	528	23.2%	608	6.9%	555	17.2%	333	95.2%
VIZCAYA	448	398	12.8%	524	-14.5%	395	13.4%	322	39.2%
<b>TOTAL</b>	<b>17,753</b>	<b>16,480</b>	<b>7.7%</b>	<b>22,701</b>	<b>-21.8%</b>	<b>15,248</b>	<b>16.4%</b>	<b>14,633</b>	<b>21.3%</b>

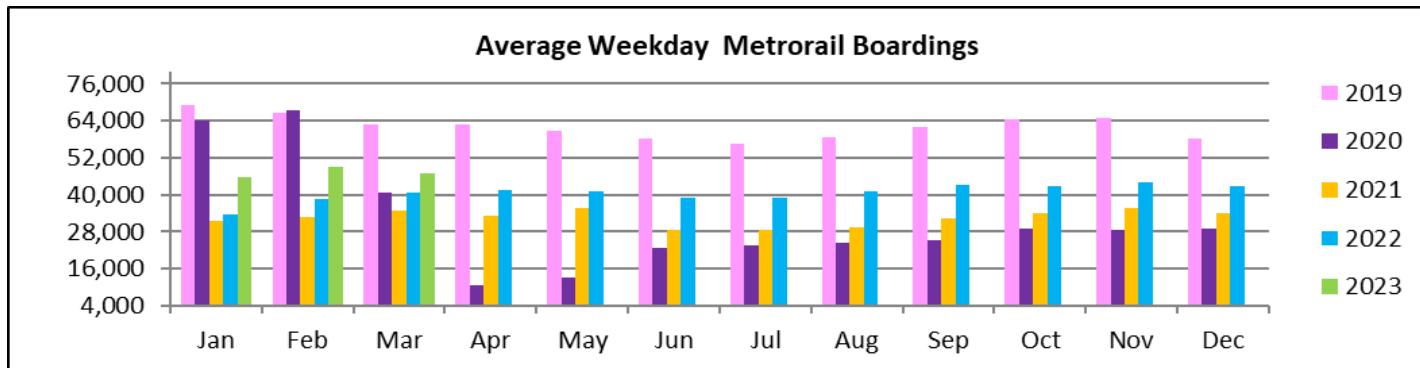
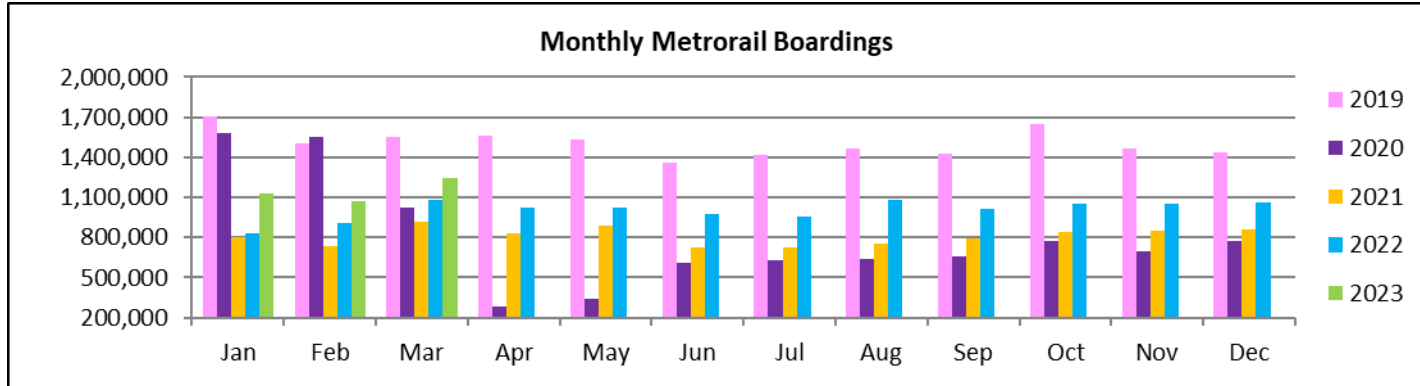
## METRORAIL TOTAL MONTHLY BOARDINGS BY STATION

<b>Monthly Totals</b>	Total Month	Total Month	Percent Change	Total Month	Percent Change	Total Month	Percent Change	Total Month	Percent Change
<b>STATIONS</b>	Mar-23	Mar-22	YOY	Feb-20	Current vs Feb-20	Feb-23	MOM	Mar-21	YO2Y
ALLAPATTAH	45,476	36,025	26.2%	46,868	-3.0%	39,099	16.3%	35,664	27.5%
BRICKELL	141,718	115,024	23.2%	152,259	-6.9%	123,428	14.8%	119,140	19.0%
BROWNSVILLE	19,082	16,189	17.9%	21,285	-10.4%	17,183	11.1%	19,973	-4.5%
CIVIC CENTER	101,666	82,300	23.5%	128,921	-21.1%	87,916	15.6%	71,326	42.5%
COCONUT GROVE	41,882	35,301	18.6%	43,580	-3.9%	29,819	40.5%	30,077	39.2%
CULMER	27,704	23,443	18.2%	33,497	-17.3%	23,937	15.7%	25,088	10.4%
DADELAND NORTH	99,135	87,544	13.2%	132,894	-25.4%	87,897	12.8%	95,200	4.1%
DADELAND SOUTH	117,273	96,166	21.9%	162,416	-27.8%	103,434	13.4%	90,122	30.1%
DOUGLAS ROAD		67,508		82,141		2,121		20,847	
DR. MARTIN LUTHER KING, JR.	23,080	20,806	10.9%	27,980	-17.5%	20,073	15.0%	22,343	3.3%
EARLINGTON HEIGHTS	36,003	30,755	17.1%	40,697	-11.5%	31,901	12.9%	28,185	27.7%
GOVERNMENT CENTER	194,132	159,516	21.7%	243,414	-20.2%	158,292	22.6%	105,902	83.3%
HIALEAH	28,438	25,260	12.6%	29,516	-3.7%	28,253	0.7%	20,621	37.9%
MIAMI INTERNATIONAL AIRPORT	41,603	33,419	24.5%	46,115	-9.8%	34,166	21.8%	23,381	77.9%
NORTHSIDE	36,452	29,271	24.5%	36,127	0.9%	32,674	11.6%	31,878	14.3%
OKEECHOBEE	23,200	18,437	25.8%	26,026	-10.9%	20,545	12.9%	18,522	25.3%
OVERTOWN / ARENA	43,652	32,806	33.1%	49,911	-12.5%	36,643	19.1%	22,905	90.6%
PALMETTO	32,769	25,795	27.0%	33,944	-3.5%	28,159	16.4%	21,800	50.3%
SANTA CLARA	18,600	14,632	27.1%	19,245	-3.4%	16,618	11.9%	14,552	27.8%
SOUTH MIAMI	53,482	45,741	16.9%	69,412	-22.9%	48,455	10.4%	31,984	67.2%
TRI-RAIL	31,422	24,047	30.7%	29,120	7.9%	26,648	17.9%	22,111	42.1%
UNIVERSITY	50,987	39,555	28.9%	61,253	-16.8%	48,478	5.2%	23,983	112.6%
VIZCAYA	31,580	25,438	24.1%	32,497	-2.8%	27,052	16.7%	21,493	46.9%
<b>TOTAL</b>	<b>1,239,336</b>	<b>1,084,978</b>	<b>14.2%</b>	<b>1,549,118</b>	<b>-20.0%</b>	<b>1,072,791</b>	<b>15.5%</b>	<b>917,097</b>	<b>35.1%</b>

# METRORAIL CUMULATIVE PERCENTAGE RIDERSHIP SHARE



## TOTAL MONTHLY AND AVERAGE WEEKDAY RIDERSHIP YEAR OVER YEAR COMPARISON CHARTS – METRORAIL



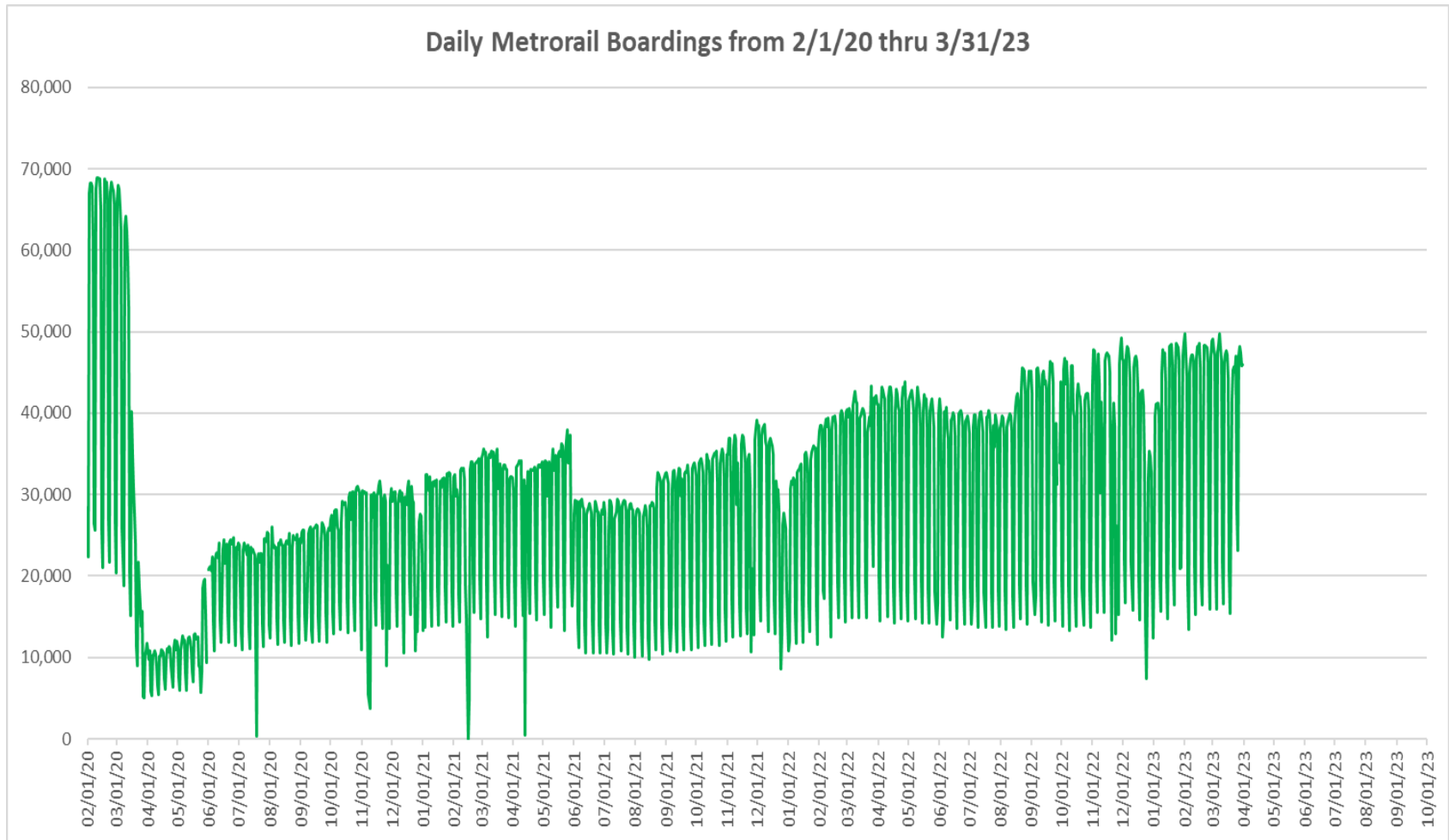


**“TOP 5 / BOTTOM 5” RAIL STATIONS AVERAGE WEEKDAY RIDERSHIP PERFORMANCE  
YEAR OVER YEAR COMPARISONS**

<b>Station</b>	<b>Mar-23</b>	<b>Mar-22</b>	<b>Absolute Delta (1)</b>	<b>Percent Delta</b>
GOVERNMENT CENTER	7,092	5,730	1,361	23.8%
BRICKELL	5,326	4,252	1,074	25.3%
DADELAND SOUTH	4,478	3,651	827	22.6%
CIVIC CENTER	4,179	3,365	814	24.2%
DADELAND NORTH	3,848	3,350	497	14.8%
Dr. MARTIN LUTHER KING, JR.	856	770	86	11.2%
BROWNSVILLE	701	590	111	18.9%
HIALEAH	1,067	951	116	12.2%
SANTA CLARA	700	547	153	27.9%
CULMER	1,044	867	178	20.5%

- (1) Averages rounded to the nearest boarding.
- (2) As a result of the SARS-CoV-2 pandemic, rides were fare-free beginning March 22, 2020; all reporting rail stations continued reporting YOY gains in March 2023, as March 2022 still showed clear reduction effects on ridership from the SARS-CoV-2 pandemic. Fares were reinstated June 1, 2021, and ridership data from the faregate system rather than the video camera counter system is utilized from that date going forward.

## DAILY METRORAIL RIDERSHIP SINCE FEBRUARY 1, 2020



- (1) National Emergency was declared on 3/13/20 as a result of the SARS-CoV-2 pandemic.
- (2) There was no Metrobus, Metrorail and Metromover service on 5/31/20, as a safety precaution, and no service for any of the four modes on 9/28/22 as a result of Hurricane Ian..
- (3) The dip at the start of the second week of November 2020 is due to Hurricane Eta; these are *raw data* from the Unleash Live contractor AI video system.
- (4) The dip on 4/13/21 is due to a loss of connectivity at all stations, affecting a few stations over the next two days as well.
- (5) The reduction seen beginning 6/1/21 is partly due to the resumption of fares and partly the result of resuming reporting Cubic faregate data rather than video camera counts.
- (6) Periodic (weekly) variations are prominent, since weekday ridership is almost always significantly higher than weekend or holiday ridership.

## METRORAIL PARKING PATRONAGE SUMMARY March 2023

PARK-RIDE LOT	ACTUAL CAPACITY (1)	ACTUAL OCCUPANCY (2)	PERCENT OCCUPANCY
DADELAND SOUTH	1,260	861	68%
DADELAND NORTH	1,963	868	44%
SOUTH MIAMI	1,081	207	19%
UNIVERSITY	260	177	68%
DOUGLAS ROAD	222	104	47%
COCONUT GROVE	100	45	45%
VIZCAYA	120	45	37%
CULMER	40	11	28%
SANTA CLARA	61	42	69%
ALLAPATTAH	74	9	12%
EARLINGTON HEIGHTS	361	127	35%
BROWNSVILLE	100	73	73%
DR. MARTIN LUTHER KING JR. (MDT)	62	0	0%
DR. MARTIN LUTHER KING JR. (GARAGE)	631	0	0%
NORTHSIDE	100	72	72%
HIALEAH	338	40	12%
OKEECHOBEE	1,398	140	10%
PALMETTO	700	147	21%
<b>TOTAL</b>	<b>8,871</b>	<b>2,968</b>	<b>33%</b>

- (1) Number of spaces could vary each week; shown are available spaces during final week of month, as submitted by DTPW Safety & Security office.
- (2) All sampled occupancy data provided by DTPW Safety & Security office; calculations are revisions to those submitted by that entity.
- (3) Daily averages rounded to nearest unit, with fewer counts at some stations due to shortage of DTPW Safety & Security office staff; calculations are based on sampled counted days only per raw data submitted, with resulting average daily occupancy shown.
- (\*) Closed throughout the month, per the DTPW Safety & Security office.

# Metromover



March 2023

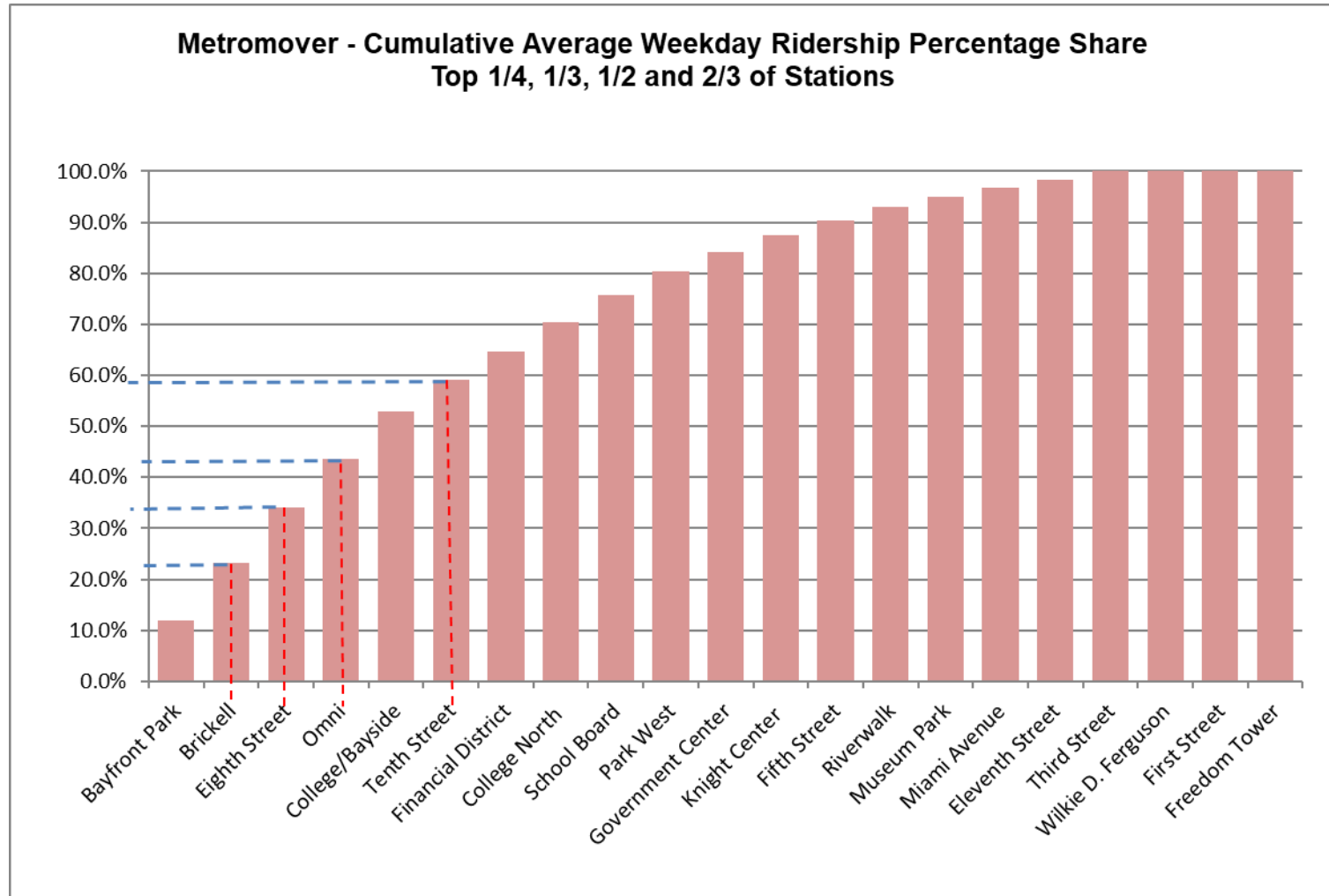
## METROMOVER MONTHLY AND AVERAGE DAILY BOARDINGS BY STATION

	Average Weekday	Average Weekday	Percent Change	Average Saturday	Average Saturday	Percent Change	Average Sunday	Average Sunday	Percent Change	Total Monthly	Total Monthly	Percent Change
STATIONS	Mar-23	Mar-22	23 vs 22	Mar-23	Mar-22	23 vs 22	Mar-23	Mar-22	23 vs 22	Mar-23	Mar-22	23 vs 22
School Board	1,030	786	31.1%	877	736	19.1%	824	635	29.8%	30,497	23,561	29.4%
Omni	1,815	1,728	5.0%	1,740	1,689	3.0%	1,511	1,432	5.5%	54,742	52,222	4.8%
Museum Park	378	305	24.1%	553	403	37.3%	437	323	35.3%	12,665	9,917	27.7%
Eleventh Street	306	287	6.6%	329	274	20.2%	323	206	57.3%	9,659	8,530	13.2%
Park West	896	523	71.3%	1,076	822	30.8%	837	427	95.9%	28,259	14,208	98.9%
Freedom Tower (1)												
Government Center	706	2,112	-66.6%	549	1,757	-68.8%	415	1,390	-70.2%	13,216	51,672	-74.4%
Miami Avenue	361	291	23.8%	267	271	-1.6%	239	191	25.3%	3,898	7,506	-48.1%
Third Street	301	298	1.1%	271	281	-3.7%	255	212	20.3%	9,025	8,822	2.3%
Knight Center	634	473	34.1%	456	391	16.8%	394	269	46.7%	17,990	13,519	33.1%
Bayfront Park	2,261	1,904	18.8%	2,209	2,076	6.4%	2,013	1,845	9.1%	68,894	59,474	15.8%
First Street (2)		1,057			1,178			1,372			29,962	
College/Bayside	1,804	1,345	34.1%	2,176	1,296	67.9%	1,609	1,262	27.5%	56,623	35,869	57.9%
College North	1,072	671	59.7%	924	519	78.0%	741	367	102.0%	31,304	18,978	64.9%
Wilkie D. Ferguson (2)		961			782			591			27,586	
Riverwalk	510	402	26.7%	420	314	33.8%	354	228	55.3%	14,824	11,421	29.8%
Fifth Street	540	341	58.5%	461	320	44.3%	337	231	46.1%	15,605	10,034	55.5%
Eighth Street	2,069	1,498	38.1%	2,020	1,496	35.0%	1,621	1,231	31.7%	62,145	45,360	37.0%
Tenth Street	1,148	672	70.9%	1,008	682	47.8%	926	519	78.5%	34,149	20,261	68.5%
Brickell	2,156	2,060	4.7%	1,993	1,971	1.1%	1,683	1,662	1.2%	64,301	61,908	3.9%
Financial District	1,082	895	20.9%	771	629	22.5%	658	488	34.9%	30,600	25,047	22.2%
<b>TOTAL</b>	<b>19,069</b>	<b>18,608</b>	<b>2.5%</b>	<b>18,097</b>	<b>17,886</b>	<b>1.2%</b>	<b>15,175</b>	<b>14,878</b>	<b>2.0%</b>	<b>558,396</b>	<b>535,857</b>	<b>4.2%</b>

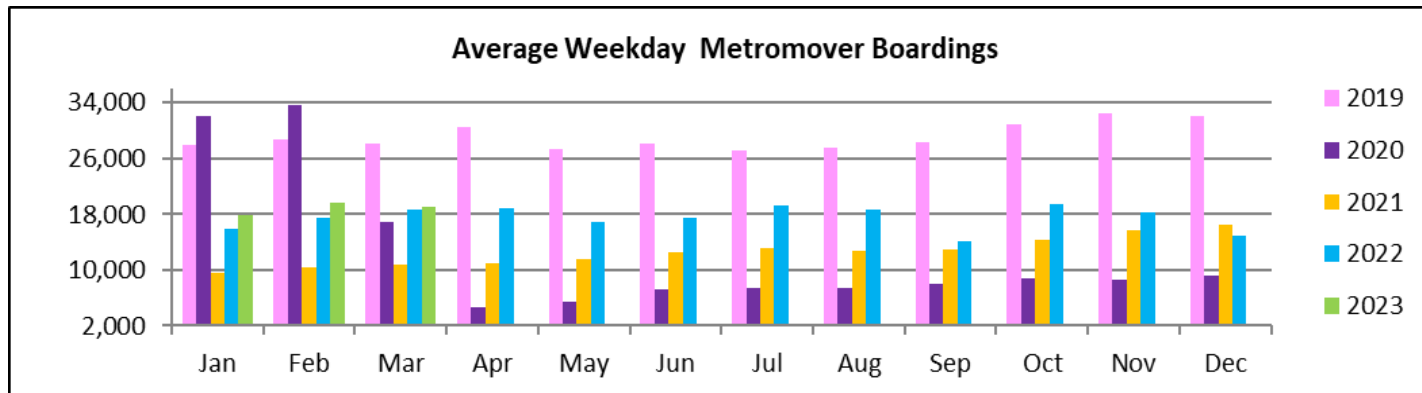
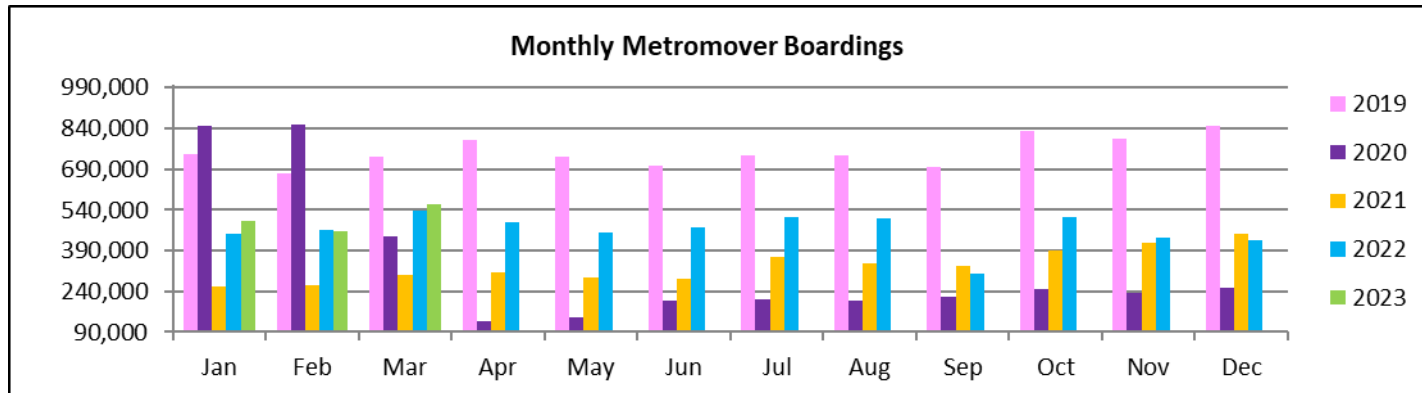
(1) Freedom Tower Station was closed for construction.

(2) First Street and Wilkie D. Ferguson stations had no ridership data Mar-23, due to the installation of a new enhanced automatic passenger counter system.

# METROMOVER CUMULATIVE PERCENTAGE RIDERSHIP SHARE



# TOTAL MONTHLY AND AVERAGE WEEKDAY RIDERSHIP YEAR OVER YEAR COMPARISON CHARTS – METROMOVER



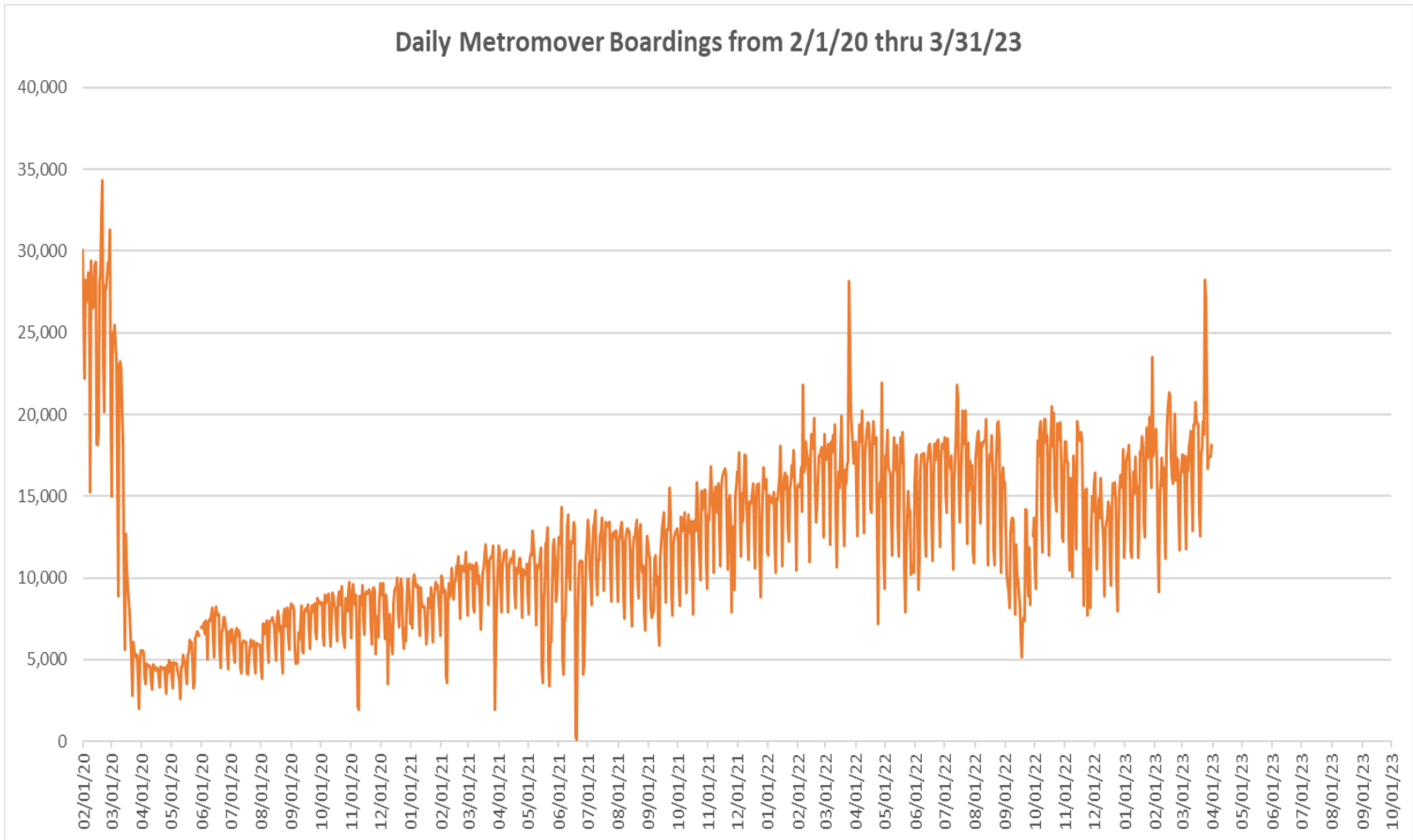
**“TOP 5 / BOTTOM 5” MOVER STATIONS AVERAGE WEEKDAY RIDERSHIP PERFORMANCE  
YEAR OVER YEAR COMPARISONS**

<b>Station</b>	<b>Mar-23</b>	<b>Mar-22</b>	<b>Absolute Delta (1)</b>	<b>Percent Delta</b>
Eighth Street	2,069	1,498	571	38.1%
Tenth Street	1,148	672	476	70.9%
College/Bayside	1,804	1,345	459	34.1%
College North	1,072	671	400	59.7%
Park West	896	523	373	71.3%
Government Center	706	2,112	-1,406	-66.6%
Third Street	301	298	3	1.1%
Eleventh Street	306	287	19	6.6%
Miami Avenue	361	291	69	23.8%
Museum Park	378	305	74	24.1%

(1) Averages rounded to the nearest boarding.



## DAILY METROMOVER RIDERSHIP SINCE FEBRUARY 1, 2020



- (1) National Emergency was declared on 3/13/20 as a result of the SARS-CoV-2 pandemic.
- (2) There was no Metrobus, Metrorail and Metromover service on 5/31/20, as a safety precaution, and no service for any of the four modes on 9/28/22 as a result of Hurricane Ian.
- (3) The dip at the start of the second week of November 2020 is due to Hurricane Eta; these are *raw data* from the UTA contractor APC system. Other more recent dips are due to various station closures (mostly on weekends) for system maintenance purposes.
- (4) Periodic (weekly) variations are prominent, since weekday ridership is almost always significantly higher than weekend or holiday ridership.

## Special Transportation Services

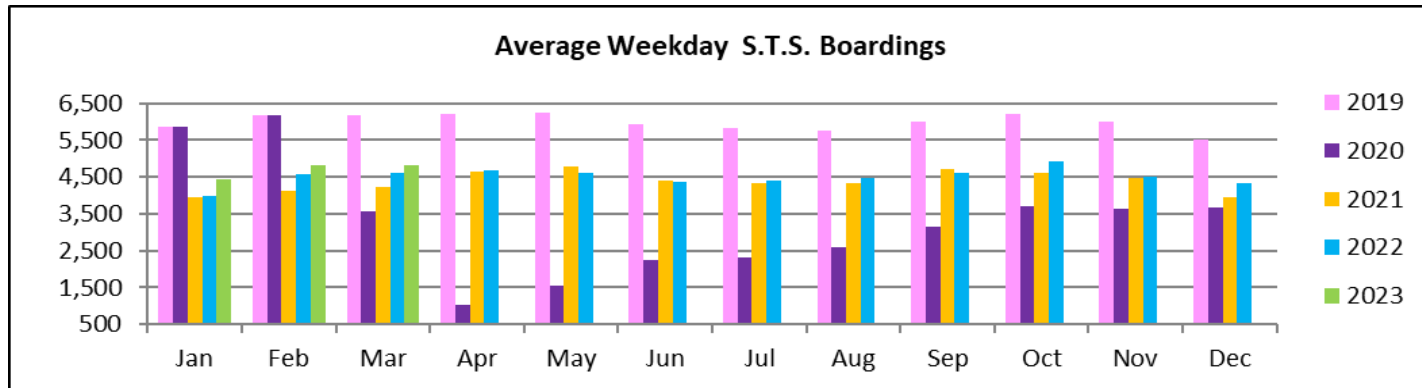
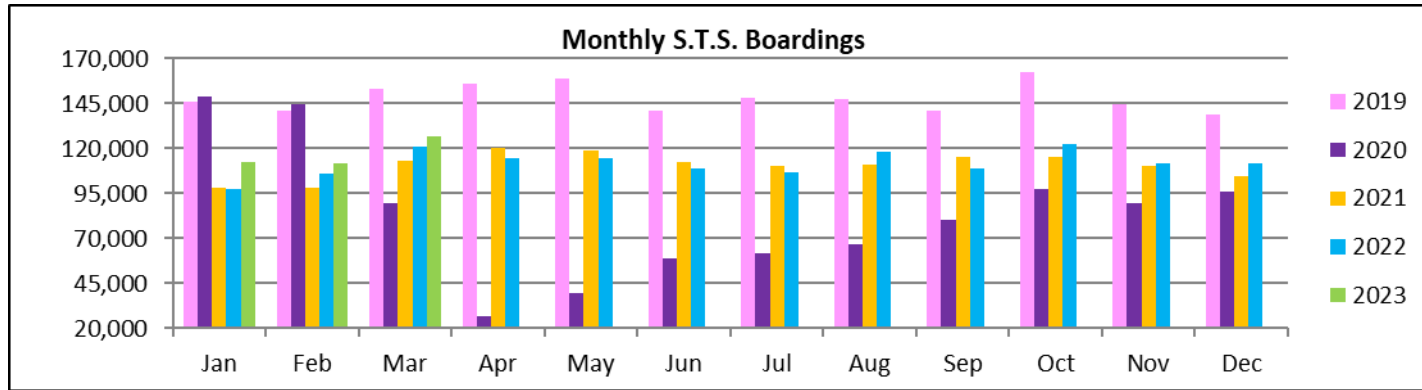


**STS MONTHLY AND AVERAGE DAILY BOARDINGS**  
**March 2023**

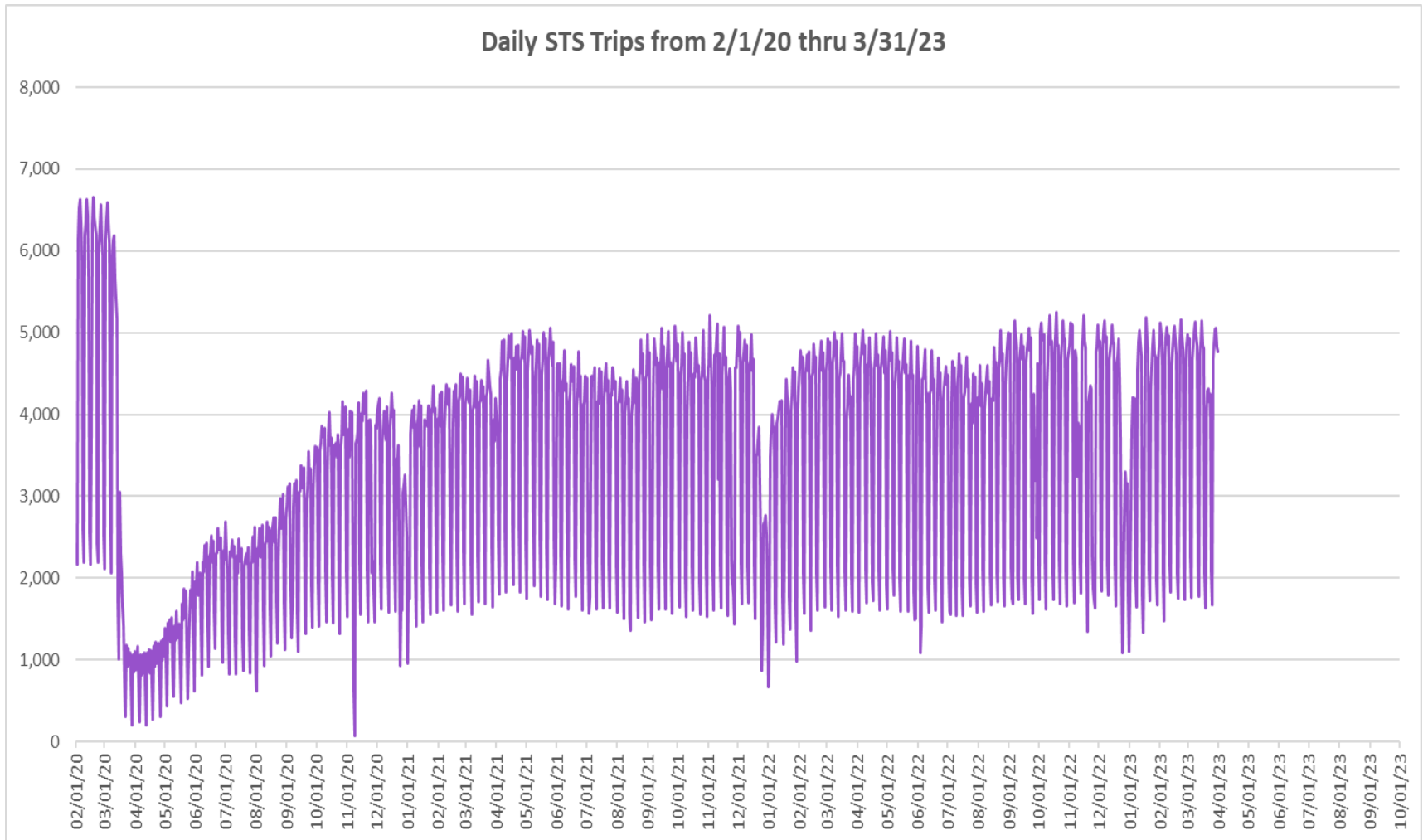
Measure	timeline	Ambulatory	Wheelchair	Total Clients (*)
<b>Average Weekday</b>	Mar-23	4,009	825	<b>4,834</b>
<b>Average Saturday</b>	Mar-23	1,775	393	<b>2,168</b>
<b>Average Sunday</b>	Mar-23	1,433	311	<b>1,744</b>
<b>Total Monthly</b>	<b>Mar-23</b>	<b>105,037</b>	<b>21,782</b>	<b>126,819</b>
<b>Average Weekday</b>	Mar-22	3,808	802	<b>4,610</b>
<b>Average Saturday</b>	Mar-22	1,697	390	<b>2,087</b>
<b>Average Sunday</b>	Mar-22	1,292	293	<b>1,585</b>
<b>Total Monthly</b>	<b>Mar-22</b>	<b>99,541</b>	<b>21,177</b>	<b>120,718</b>
<b>Average Weekday</b>	Mar-21	3,448	781	<b>4,229</b>
<b>Average Saturday</b>	Mar-21	1,849	415	<b>2,264</b>
<b>Average Sunday</b>	Mar-21	1,436	216	<b>1,652</b>
<b>Total Monthly</b>	<b>Mar-21</b>	<b>92,443</b>	<b>20,487</b>	<b>112,930</b>
<b>% Change Current vs. Mar 2022 Weekday</b>		5.3%	2.8%	4.9%
<b>% Change Current vs. Mar 2022 Saturday</b>		4.6%	0.7%	3.9%
<b>% Change Current vs. Mar 2022 Sunday</b>		10.9%	6.1%	10.0%
<b>% Change Current vs. Mar 2022 Month Total</b>		<b>5.5%</b>	<b>2.9%</b>	<b>5.1%</b>
<b>% Change Current vs. Mar 2021 Weekday</b>		16.3%	5.6%	14.3%
<b>% Change Current vs. Mar 2021 Saturday</b>		-4.0%	-5.4%	-4.3%
<b>% Change Current vs. Mar 2021 Sunday</b>		-0.2%	44.0%	5.6%
<b>% Change Current vs. Mar 2021 Month Total</b>		<b>13.6%</b>	<b>6.3%</b>	<b>12.3%</b>

(\*) Trip count data provided by STS contractor.

# TOTAL MONTHLY AND AVERAGE WEEKDAY RIDERSHIP YEAR OVER YEAR COMPARISON CHARTS – SPECIAL TRANSPORTATION SERVICES (S.T.S.)

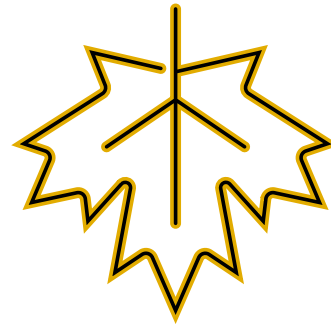
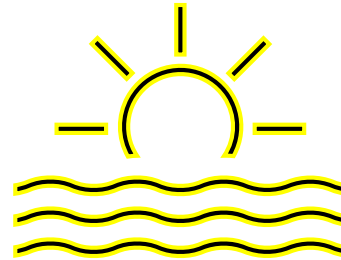
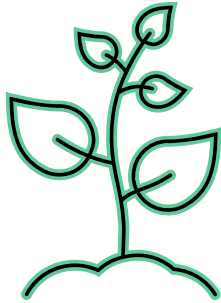


## DAILY STS RIDERSHIP SINCE FEBRUARY 1, 2020

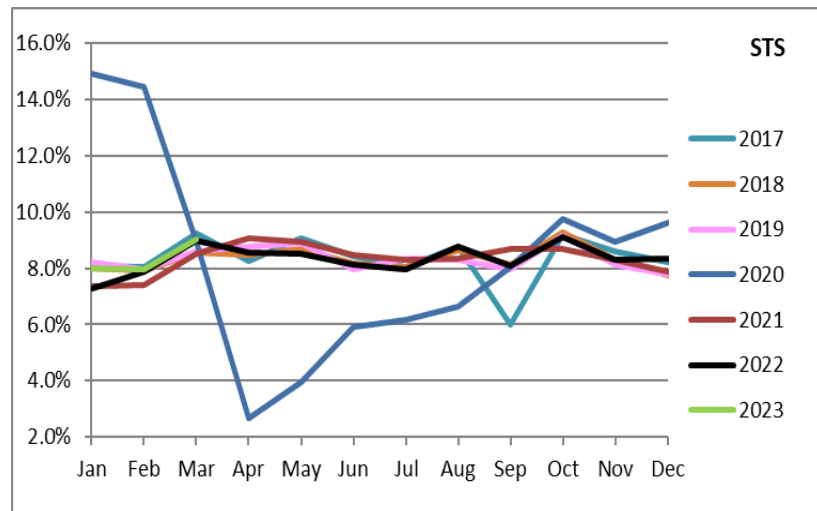
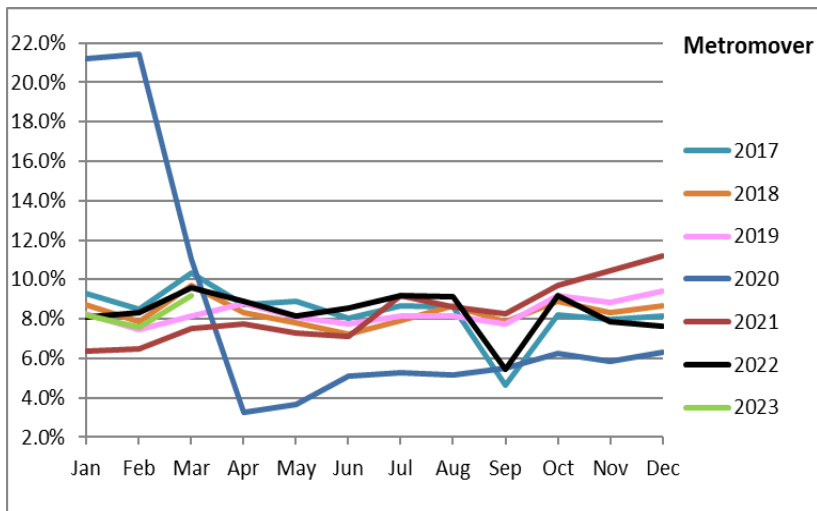
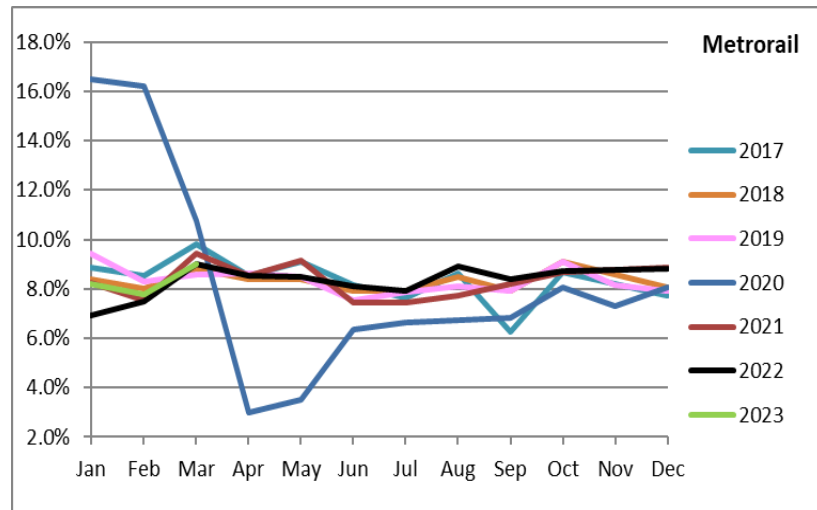
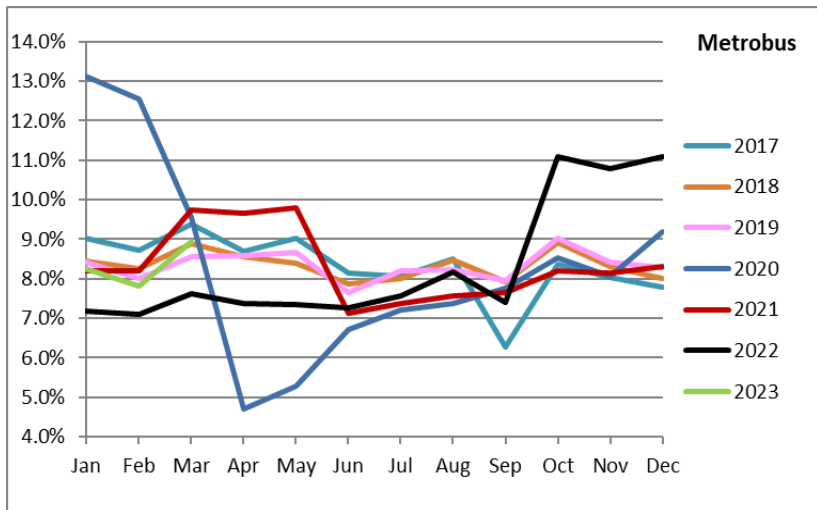


- (1) National Emergency was declared on 3/13/20 as a result of the SARS-CoV-2 pandemic.
- (2) There was no service (for any of the four modes) on 9/28/22 as a result of Hurricane Ian.
- (3) The dip at the start of the second week of November 2020 is due to Hurricane Eta.
- (4) Periodic (weekly) variations are prominent, since weekday ridership is almost always significantly higher than weekend or holiday ridership.

# Ridership Seasonality



# RIDERSHIP SEASONALITY – PERCENT RIDERSHIP SHARE BY MONTH AND CALENDAR YEAR FOR EACH MODE



Note: the prominent dips seen in the fall of 2017 and beginning in the spring of 2020 are due to Hurricane Irma and the SARS-CoV-2 pandemic, respectively. Reductions in Bus and Rail ridership share seen beginning in June 2021 are due to reinstatement of fares as well changes in reporting tools and datasets, as discussed earlier in this report. The prominent peaks seen beginning October 2022 are due from a changeover from farebox counts to ridership obtained from new automatic passenger counter (APC) technology on Metrobus.