



TRANSPORTATION AND PUBLIC WORKS

RIDERSHIP TECHNICAL REPORT

Division of Performance and Materials Management



May 2023

Table of Contents

<i>Table of Contents</i>	2-3
All Modes Overview	4
Total Monthly Weekday, Saturday and Sunday Monthly Boardings By Mode	5
Average Weekday, Saturday and Sunday Boardings by Mode	6
Metrobus Total Monthly Ridership Comparisons by Fiscal Year	7
Metrorail Total Monthly Ridership Comparisons by Fiscal Year	8
Metromover Total Monthly Ridership Comparisons by Fiscal Year	9
STS Total Monthly Ridership Comparisons by Fiscal Year	10
All-Modes Combined Total Monthly Ridership Comparisons By Fiscal Year	11
All Modes Combined Total Monthly and Average Weekday Ridership – Year over Year Comparison Charts	12
Average Weekday Ridership – Modal Splits	13
Daily Ridership for All Modes Combined since 2/1/20	14
Metrobus	15
Metrobus Average Weekday Boardings by Route	16-18
Metrobus Average Saturday Boardings by Route	19-20
Metrobus Average Sunday Boardings by Route	21-22
Metrobus Monthly Total Boardings by Route	23-25
Year-over-Year Bus Ridership by Route Service Type	26-27
Bus Routes as Ranked by Percentage of Average Weekday Ridership	28
Metrobus Cumulative Percentage Average Weekday Ridership Share by Route (Top 75%)	29
Total Monthly and Average Weekday Bus Ridership – Year over Year Comparison Charts	30
Bus “Top 5 / Bottom 5” Routes Average Weekday Ridership Performance	31
Daily Metrobus Ridership since 2/1/20	32
Metrobus Parking Patronage Summary	33

Table of Contents (continued)

Metrorail	34
Metrorail Average Weekday Boardings by Station	35
Metrorail Average Saturday Boardings by Station	36
Metrorail Average Sunday Boardings by Station	37
Metrorail Total Monthly Boardings by Station	38
Metrorail Cumulative Percentage Average Weekday Ridership Share	39
Total Monthly and Average Weekday Rail Ridership – Year over Year Comparison Charts	40
“Top 5 / Bottom 5” Stations Average Weekday Ridership Performance	41
Daily Metrorail Ridership since 2/1/20	42
Metrorail Parking Patronage Summary	43
Metromover	44
Monthly and Average Daily Mover Boardings by Station	45
Metromover Cumulative Percentage Average Weekday Ridership Share	46
Total Monthly and Average Weekday Mover Ridership – Year over Year Comparison Charts	47
“Top 5 / Bottom 5” Stations Average Weekday Ridership Performance	48
Daily Metromover Ridership since 2/1/20	49
Special Transportation Services (STS)	50
STS Monthly and Average Daily Boardings	51
Total Monthly and Average Weekday STS Ridership – Year over Year Comparison Charts	52
Daily STS Ridership since 2/1/20	53
Ridership Seasonality	54
Ridership Seasonality – Percent Ridership Share by Month and Calendar year for Each Mode	55

All Modes Overview



**TOTAL MONTHLY WEEKDAY, SATURDAY AND SUNDAY BOARDINGS BY MODE
May 2023**

TRAVEL MODE	MONTH'S TOTAL WEEKDAYS RIDERSHIP	MONTH'S TOTAL SATURDAYS RIDERSHIP	MONTH'S TOTAL SUNDAYS RIDERSHIP	TOTAL MONTHLY RIDERSHIP	% CHANGE vs May 2022 TOTAL MONTH RIDERSHIP
METROBUS (1), (2)	4,061,944	451,457	439,796	4,953,197	59.9%
METRORAIL (3)	996,534	79,693	75,592	1,151,819	12.6%
METROMOVER (4)	427,230	54,774	65,944	547,948	20.4%
STS PARATRANSIT (5)	110,319	8,509	8,954	127,782	11.6%
TOTAL	5,596,027	594,433	590,286	6,780,746	44.6%

- (1) Metrobus fares resumed on June 1, 2021, following a 14-month period of fare-free rides as a result of the SARS-CoV-2 pandemic. The NextFare System farebox data replaced the bus automatic passenger counter data as ridership data of record starting on that date.
- (2) Bus ridership reporting through automatic passenger counters coupled with a new enhanced sensor system resumed on October 1, 2022.
- (3) Metrorail fares resumed on June 1, 2021, following a 14-month period of fare-free rides as a result of the SARS-CoV-2 pandemic. The NextFare System faregate data replaced the video data as ridership data of record starting on that date.
- (4) Beginning March 13, 2020 (day of National Emergency Declaration due to SARS-CoV-2 pandemic), only raw data from Metromover automatic passenger counters is reported; no estimates are performed after March 13, 2020.
- (5) Paratransit ridership data as reported by the contractor.

**AVERAGE WEEKDAY, SATURDAY AND SUNDAY BOARDINGS BY MODE
May 2023**

Travel Mode	Average Weekday	Average Saturday	Average Sunday	% Change May 2022 Weekday	% Change May 2022 Saturday	% Change May 2022 Sunday
METROBUS	184,695	112,864	87,959	55.1%	59.0%	67.2%
METRORAIL	45,749	20,118	14,526	11.4%	7.3%	1.1%
METROMOVER	20,792	15,351	14,014	23.6%	22.2%	24.5%
STS PARATRANSIT	5,015	2,127	1,791	8.4%	8.6%	12.3%
Totals (1)	256,251	150,461	118,290	41.1%	44.3%	48.2%

(*) Average ridership is calculated and published only for those days and stations with nontrivial amounts of reported data.

METROBUS TOTAL MONTHLY RIDERSHIP COMPARISONS BY FISCAL YEAR

Bus Month	FY 19	FY 20	Variance 19 to 20	FY 21	FY 22	FY 23	Variance 22 to 23	Variance 21 to 22	Variance 19 to 23	Variance 19 to 22
Oct	4,554,886	4,507,012	-1.1%	2,805,139	3,081,157	4,679,725	51.9%	9.8%	2.7%	-32.4%
Nov	4,245,535	4,197,225	-1.1%	2,651,290	3,056,726	4,549,666	48.8%	15.3%	7.2%	-28.0%
Dec	4,081,581	4,126,990	1.1%	3,022,530	3,123,883	4,677,460	49.7%	3.4%	14.6%	-23.5%
Jan	4,195,911	4,316,998	2.9%	3,082,746	3,029,055	4,785,128	58.0%	-1.7%	14.0%	-27.8%
Feb	3,994,019	4,123,083	3.2%	3,076,966	2,995,789	4,526,317	51.1%	-2.6%	13.3%	-25.0%
Mar	4,266,768	3,136,162	-26.5%	3,660,639	3,218,562	5,183,872	61.1%	-12.1%	21.5%	-24.6%
Apr	4,291,135	1,544,316	-64.0%	3,625,048	3,105,797	4,618,302	48.7%	-14.3%	7.6%	-27.6%
May	4,330,922	1,734,609	-59.9%	3,683,343	3,097,574	4,953,197	59.9%	-15.9%	14.4%	-28.5%
Jun	3,823,863	2,210,725	-42.2%	2,672,570	3,064,059			14.6%		-19.9%
Jul	4,094,906	2,366,749	-42.2%	2,769,907	3,189,994			15.2%		-22.1%
Aug	4,109,613	2,422,014	-41.1%	2,843,552	3,442,006			21.0%		-16.2%
Sep	3,971,220	2,546,923	-35.9%	2,877,110	3,123,572			8.6%		-21.3%
FY Total	49,960,359	37,232,806	-25.5%	36,770,840	37,528,174			2.1%		-24.9%

METRORAIL TOTAL MONTHLY RIDERSHIP COMPARISONS BY FISCAL YEAR

Rail Month	FY 19	FY 20	Variance 19 to 20	FY 21	FY 22	FY 23	Variance 22 to 23	Variance 21 to 22	Variance 19 to 23	Variance 19 to 22
Oct	1,757,225	1,643,166	-6.5%	769,525	844,383	1,053,191	24.7%	9.7%	-40.1%	-51.9%
Nov	1,656,929	1,469,448	-11.3%	699,492	850,881	1,055,066	24.0%	21.6%	-36.3%	-48.6%
Dec	1,553,804	1,433,928	-7.7%	769,194	860,436	1,063,096	23.6%	11.9%	-31.6%	-44.6%
Jan	1,708,695	1,576,340	-7.7%	799,119	832,924	1,127,340	35.3%	4.2%	-34.0%	-51.3%
Feb	1,501,458	1,549,118	3.2%	730,792	905,162	1,072,791	18.5%	23.9%	-28.6%	-39.7%
Mar	1,554,851	1,027,319	-33.9%	917,097	1,084,978	1,239,336	14.2%	18.3%	-20.3%	-30.2%
Apr	1,559,446	287,803	-81.5%	827,414	1,027,139	1,087,816	5.9%	24.1%	-30.2%	-34.1%
May	1,531,597	337,696	-78.0%	887,111	1,023,322	1,151,819	12.6%	15.4%	-24.8%	-33.2%
Jun	1,359,966	608,758	-55.2%	723,469	975,477			34.8%		-28.3%
Jul	1,419,158	632,964	-55.4%	722,159	953,331			32.0%		-32.8%
Aug	1,463,646	641,275	-56.2%	749,578	1,076,490			43.6%		-26.5%
Sep	1,427,726	654,244	-54.2%	795,749	1,012,331			27.2%		-29.1%
FY Total	18,494,501	11,862,059	-35.9%	9,390,699	11,446,854			21.9%		-38.1%

METROMOVER TOTAL MONTHLY RIDERSHIP COMPARISONS BY FISCAL YEAR

Mover Month	FY 19	FY 20	Variance 19 to 20	FY 21	FY 22	FY 23	Variance 22 to 23	Variance 21 to 22	Variance 19 to 23	Variance 19 to 22
Oct	790,533	831,234	5.1%	250,044	389,065	514,308	32.2%	55.6%	-34.9%	-50.8%
Nov	735,198	799,632	8.8%	232,422	418,929	439,150	4.8%	80.2%	-40.3%	-43.0%
Dec	767,239	849,832	10.8%	251,019	450,320	426,073	-5.4%	79.4%	-44.5%	-41.3%
Jan	746,728	847,773	13.5%	255,968	451,566	498,566	10.4%	76.4%	-33.2%	-39.5%
Feb	675,160	855,398	26.7%	260,332	465,968	459,264	-1.4%	79.0%	-32.0%	-31.0%
Mar	737,814	441,200	-40.2%	302,502	535,857	558,396	4.2%	77.1%	-24.3%	-27.4%
Apr	795,696	130,549	-83.6%	310,772	495,982	565,943	14.1%	59.6%	-28.9%	-37.7%
May	734,645	146,454	-80.1%	292,922	455,120	547,948	20.4%	55.4%	-25.4%	-38.0%
Jun	701,318	203,637	-71.0%	286,145	477,286			66.8%		-31.9%
Jul	739,814	210,596	-71.5%	368,847	512,094			38.8%		-30.8%
Aug	739,785	205,995	-72.2%	344,319	508,359			47.6%		-31.3%
Sep	699,879	219,696	-68.6%	331,915	305,185			-8.1%		-56.4%
FY Total	8,863,809	5,741,996	-35.2%	3,487,207	5,465,731			56.7%		-38.3%

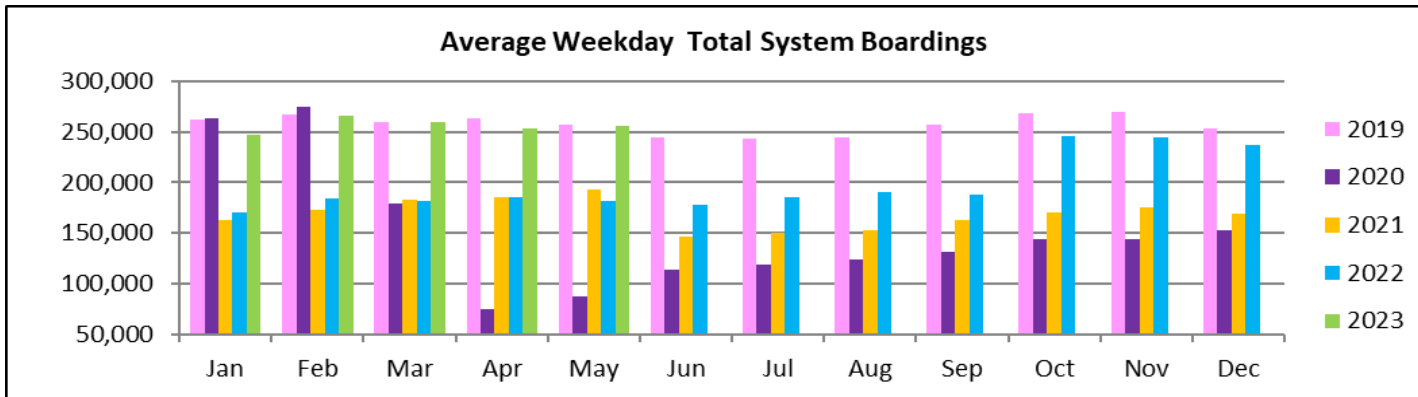
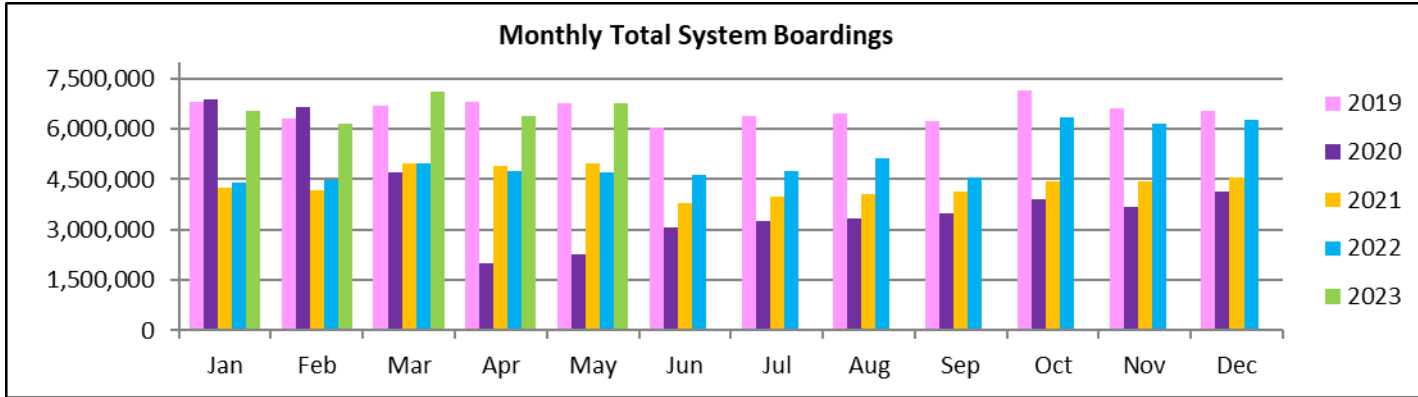
SPECIAL TRANSPORTATION SERVICES (STS) TOTAL MONTHLY RIDERSHIP COMPARISONS BY FISCAL YEAR

STS Month	FY 19	FY 20	Variance 19 to 20	FY 21	FY 22	FY 23	Variance 22 to 23	Variance 21 to 22	Variance 19 to 23	Variance 19 to 22
Oct	162,564	162,704	0.1%	97,388	115,122	122,189	6.1%	18.2%	-24.8%	-29.2%
Nov	145,653	144,366	-0.9%	89,387	110,289	111,578	1.2%	23.4%	-23.4%	-24.3%
Dec	136,110	138,642	1.9%	96,366	104,496	112,019	7.2%	8.4%	-17.7%	-23.2%
Jan	146,268	149,114	1.9%	97,928	97,541	112,632	15.5%	-0.4%	-23.0%	-33.3%
Feb	141,396	144,392	2.1%	98,285	105,706	111,748	5.7%	7.6%	-21.0%	-25.2%
Mar	153,191	89,634	-41.5%	112,930	120,718	126,819	5.1%	6.9%	-17.2%	-21.2%
Apr	155,808	26,877	-82.7%	120,122	114,912	116,882	1.7%	-4.3%	-25.0%	-26.2%
May	158,665	39,654	-75.0%	118,636	114,505	127,782	11.6%	-3.5%	-19.5%	-27.8%
Jun	141,320	59,093	-58.2%	112,397	109,054			-3.0%		-22.8%
Jul	148,232	61,765	-58.3%	110,059	107,188			-2.6%		-27.7%
Aug	147,331	66,563	-54.8%	110,766	117,941			6.5%		-19.9%
Sep	141,387	80,346	-43.2%	115,406	108,788			-5.7%		-23.1%
FY Total	1,777,925	1,163,150	-34.6%	1,279,670	1,326,260			3.6%		-25.4%

ALL-MODES COMBINED TOTAL MONTHLY RIDERSHIP COMPARISONS BY FISCAL YEAR

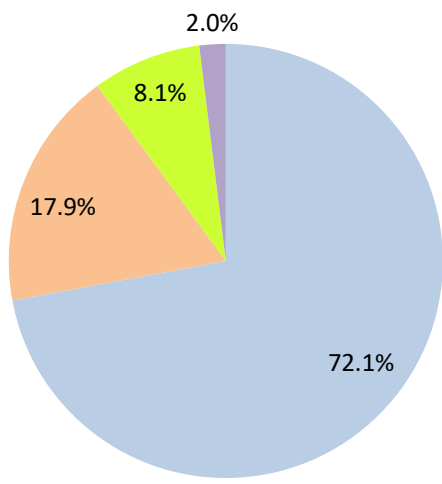
All Modes											
Month	FY 19	FY 20	FY 21	FY 22	FY 23	19 TO 20	20 TO 21	21 TO 22	22 TO 23	19 TO 23	19 TO 22
Oct	7,265,208	7,144,116	3,922,096	4,429,727	6,369,413	-1.7%	-45.1%	12.9%	43.8%	-12.3%	-39.0%
Nov	6,783,315	6,610,671	3,672,591	4,436,825	6,155,460	-2.5%	-44.4%	20.8%	38.7%	-9.3%	-34.6%
Dec	6,538,734	6,549,392	4,139,109	4,539,135	6,278,648	0.2%	-36.8%	9.7%	38.3%	-4.0%	-30.6%
Jan	6,797,602	6,890,225	4,235,761	4,411,086	6,523,666	1.4%	-38.5%	4.1%	47.9%	-4.0%	-35.1%
Feb	6,312,033	6,671,991	4,166,375	4,472,625	6,170,120	5.7%	-37.6%	7.4%	38.0%	-2.2%	-29.1%
Mar	6,712,624	4,694,315	4,993,168	4,960,115	7,108,423	-30.1%	6.4%	-0.7%	43.3%	5.9%	-26.1%
Apr	6,802,085	1,989,545	4,883,356	4,743,830	6,388,943	-70.8%	145.5%	-2.9%	34.7%	-6.1%	-30.3%
May	6,755,829	2,258,413	4,982,012	4,690,521	6,780,746	-66.6%	120.6%	-5.9%	44.6%	0.4%	-30.6%
Jun	6,026,467	3,082,213	3,794,581	4,625,876		-48.9%	23.1%	21.9%			-23.2%
Jul	6,402,110	3,272,074	3,970,972	4,762,607		-48.9%	21.4%	19.9%			-25.6%
Aug	6,460,375	3,335,847	4,048,215	5,144,796		-48.4%	21.4%	27.1%			-20.4%
Sep	6,240,212	3,501,209	4,120,180	4,549,876		-43.9%	17.7%	10.4%			-27.1%
FY Total	79,096,594	56,000,011	50,928,416	55,767,019		-29.2%	-9.1%	9.5%			-29.5%

TOTAL MONTHLY AND AVERAGE WEEKDAY RIDERSHIP YEAR OVER YEAR COMPARISON CHARTS – ALL MODES COMBINED



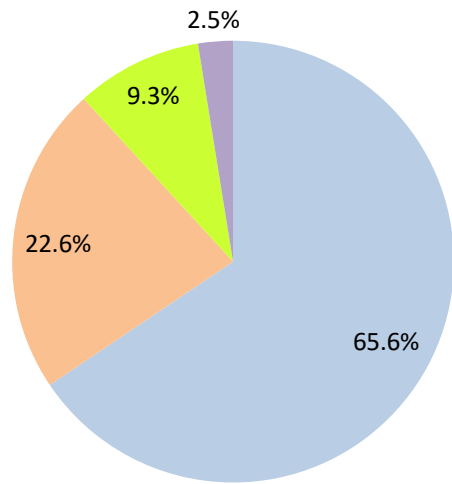
AVERAGE WEEKDAY RIDERSHIP - MODAL SPLITS

May 2023



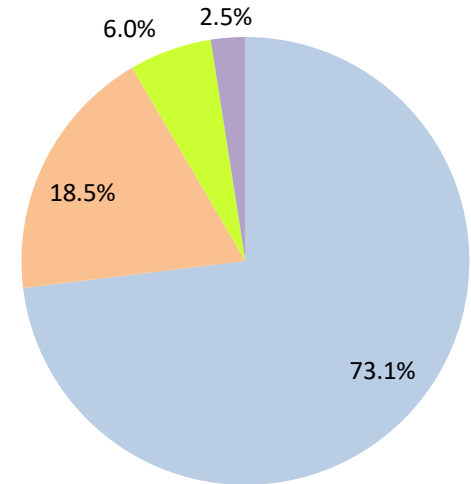
boardings

May 2022



boardings

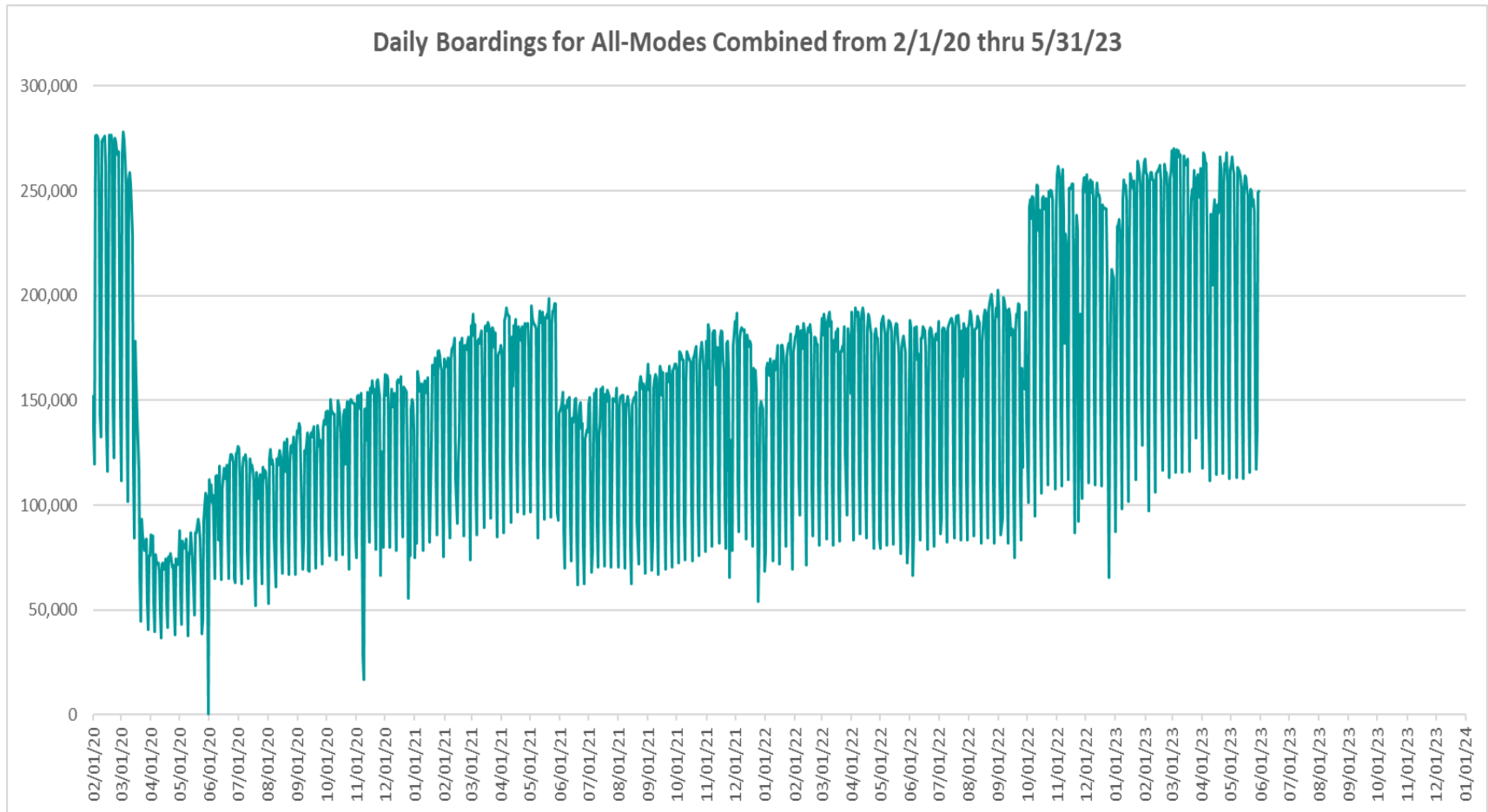
May 2021



boardings



DAILY RIDERSHIP FOR ALL MODES COMBINED SINCE FEBRUARY 1, 2020



- (1) National Emergency was declared on 3/13/20 as a result of the SARS-CoV-2 pandemic.
- (2) There was no Metrobus, Metrorail and Metromover service on 5/31/20, as a safety precaution, and no service for any of the four modes on 9/28/22 as a result of Hurricane Ian.
- (3) The dip at the start of the second week of November 2020 is due to Hurricane Eta.
- (4) The reduction seen beginning 6/1/21 is partly due to the resumption of fares for bus and rail, and partly the result of having resumed reporting Cubic farebox data rather than bus APC counts, as well as Cubic rail faregate counts instead of video camera counts on that date. The jump seen at the start of October 2022 is due to the return to APC bus ridership counts reporting on 10/1/22.
- (5) Periodic (weekly) variations are prominent, since weekday ridership is almost always significantly higher than weekend or holiday ridership.

Metrobus



METROBUS AVERAGE WEEKDAY BOARDINGS BY ROUTE (†)

Route	Average Weekday	Average Weekday	Percent Change	Average Weekday	Percent Change	Average Weekday	Percent Change	Average Weekday	Percent Change
	weekdays May-23	May-22	YOY	Feb-20	Current vs Feb-20	Apr-23	MOM	May-21	YO2Y
1 (*)	178	153	16.4%	184	-3.5%	196	-9.5%	203	-12.5%
2	2,922	1,926	51.7%	3,102	-5.8%	2,866	2.0%	2,138	36.6%
3	5,338	3,673	45.3%	5,137	3.9%	5,148	3.7%	4,950	7.8%
7	3,976	2,945	35.0%	3,501	13.6%	3,852	3.2%	2,430	63.6%
8	4,868	3,231	50.7%	3,909	24.5%	4,703	3.5%	4,606	5.7%
9	6,171	3,791	62.8%	5,528	11.6%	6,004	2.8%	6,023	2.4%
10	2,381	1,674	42.2%	2,482	-4.0%	2,298	3.6%	1,885	26.4%
11	8,635	6,190	39.5%	7,292	18.4%	8,718	-1.0%	7,090	21.8%
12	2,864	1,563	83.2%	2,779	3.1%	2,885	-0.7%	2,117	35.3%
16	1,925	1,280	50.4%	1,862	3.4%	1,880	2.4%	1,441	33.6%
17	3,793	2,467	53.8%	3,878	-2.2%	3,740	1.4%	2,959	28.2%
19	1,656	828	100.1%	1,542	7.4%	1,495	10.8%	1,259	31.5%
21	1,958	1,177	66.4%	1,817	7.7%	1,845	6.1%	1,770	10.6%
22	4,339	2,493	74.1%	3,640	19.2%	4,139	4.8%	2,866	51.4%
24 - Coral Way Limited	2,336	1,379	69.4%	1,340	74.3%	2,269	2.9%	1,459	60.0%
27	7,031	5,039	39.5%	6,972	0.8%	7,049	-0.3%	6,110	15.1%
29 (*)	519	485	7.0%	534	-2.8%	502	3.3%	375	38.5%
31 - BUSWAY LOCAL	1,164	713	63.2%	1,089	6.8%	1,143	1.8%	732	58.9%
32	2,721	1,696	60.5%	2,390	13.9%	2,570	5.9%	1,681	61.9%
33	2,036	1,294	57.3%	1,687	20.7%	1,900	7.1%	1,269	60.5%
34 EXPRESS	1,772	960	84.6%	2,008	-11.8%	1,606	10.3%	894	98.2%
35	2,787	1,561	78.5%	2,421	15.1%	2,779	0.3%	1,872	48.9%
36	2,683	1,994	34.5%	2,536	5.8%	2,704	-0.8%	1,796	49.4%
37	3,633	2,683	35.4%	3,273	11.0%	3,547	2.4%	3,089	17.6%
38	6,503	3,487	86.5%	6,361	2.2%	6,647	-2.2%	4,640	40.2%
39 EXPRESS				893				276	
40	2,374	1,393	70.4%	1,772	34.0%	2,333	1.8%	1,323	79.4%
42	1,038	697	48.8%	820	26.6%	1,042	-0.4%	754	37.7%
46 - LIBERTY CITY CONN. (*)	22	27	-18.7%	41	-45.9%	22	0.0%	22	-0.2%
51 - FLAGLER MAX	3,900	2,670	46.1%	3,109	25.4%	3,825	2.0%	2,760	41.3%
52	1,339	898	49.0%	1,261	6.1%	1,314	1.9%	890	50.5%
54	3,204	2,164	48.1%	2,940	8.9%	3,098	3.4%	2,361	35.7%
55 MARLINS SHUTTLE									
56 (*)	376	315	19.1%	354	6.2%	356	5.5%	220	70.7%
57	539	308	75.1%	433	24.4%	498	8.3%	339	59.1%
62	1,839	1,232	49.2%	1,815	1.3%	1,724	6.7%	1,752	5.0%
71 (*)	756	541	39.8%	711	6.5%	762	-0.8%	459	64.7%
72 (*)	731	574	27.5%	781	-6.4%	724	1.0%	458	59.8%

(†) In this table and those which follow, "YOY" stands for "year-over-year", "MOM" for "month-over-month" and "YO2Y" for "year over two years", i.e., current month vs 12 months prior, one month prior, and 24 months prior, respectively.

(*) Contracted routes

(**) Due to effects from the SARS-CoV-2 pandemic; rides were fare-free beginning March 22, 2020; fares were reinstated on June 1, 2021, in part accounting for the drop in ridership from May 2021.

METROBUS AVERAGE WEEKDAY BOARDINGS BY ROUTE

Route	Average Weekday	Average Weekday	Percent Change	Average Weekday	Percent Change	Average Weekday	Percent Change	Average Weekday	Percent Change
	weekdays May-23	May-22	YOY	Feb-20	Current vs Feb-20	Apr-23	MOM	May-21	YO2Y
73	3,193	2,204	44.9%	2,124	50.3%	3,181	0.4%	1,656	92.9%
75	1,430	775	84.6%	1,429	0.1%	1,353	5.7%	1,232	16.1%
77	9,051	4,882	85.4%	7,129	26.9%	8,701	4.0%	6,897	31.2%
79 STREET MAX	555	346	60.5%	361	53.7%	543	2.2%		
82 - WESTCHESTER CIRC. (*)	72	37	95.5%	62	17.3%	71	1.5%	29	146.6%
87	1,973	1,407	40.3%	1,499	31.6%	1,926	2.5%	1,368	44.3%
88	2,472	1,596	55.0%	2,076	19.1%	2,421	2.1%	1,858	33.1%
93 - BISCAYNE MAX	3,664	2,229	64.4%	3,334	9.9%	3,466	5.7%	1,804	103.1%
95 EXPRESS	1,098	771	42.4%	1,690	-35.0%	1,076	2.0%	420	161.1%
99	1,862	1,154	61.3%	1,473	26.5%	1,771	5.1%	1,347	38.3%
101 - A (*)	224	195	14.5%	177	26.4%	222	1.0%	142	57.4%
102 - B	2,159	1,327	62.7%	1,778	21.4%	2,180	-0.9%	1,490	44.9%
103 - C				463				274	
104	968	536	80.7%	837	15.6%	967	0.1%	526	84.2%
105 - E	1,429	846	68.9%	1,287	11.0%	1,450	-1.4%	1,233	15.9%
107 - G	2,011	1,114	80.4%	1,713	17.3%	1,972	1.9%	1,235	62.8%
108 - H	615	340	80.8%	473	30.1%	516	19.2%	413	49.0%
110 - J	3,166	2,043	55.0%	2,508	26.2%	3,142	0.8%	2,924	8.3%
112 - L	8,636	5,520	56.5%	7,636	13.1%	8,505	1.5%	8,049	7.3%
113 - M	954	463	106.1%	866	10.3%	955	0.0%	512	86.4%
115 (*)	153	172	-11.1%	180	-15.3%	131	16.1%	205	-25.5%
119 - S	9,600	6,855	40.0%	8,970	7.0%	9,726	-1.3%	10,527	-8.8%
120 - BEACH MAX	6,466	4,890	32.2%	6,667	-3.0%	6,579	-1.7%	5,870	10.1%
132 TRI-RAIL (DORAL)	52	3	1598.3%	16	235.7%	56	-6.7%	19	170.6%
135	1,632	840	94.3%	1,399	16.7%	1,532	6.5%	888	83.9%
136	156	117	33.5%	126	23.9%	155	1.1%	96	63.3%
137 - WEST DADE CONN.	2,302	1,365	68.6%	1,626	41.6%	2,220	3.7%	1,184	94.4%
150 - MIAMI BEACH AIRPORT FLYER	2,210	1,387	59.3%	1,867	18.4%	2,212	-0.1%	1,473	50.0%
155 - BISCAYNE GARDENS CIRCULATOR (*)	55	39	40.2%	44	24.9%	48	15.2%	28	95.0%
175 - NW MIAMI-DADE EXPRESS				33					
183	3,610	2,002	80.4%	3,149	14.7%	3,442	4.9%	2,741	31.7%
195 EXPRESS - BROWARD BLVD				372					
196 EXPRESS - SHERIDAN ST				383					
200 - CUTLER BAY LOCAL	206	56	266.3%	158	30.6%	154	34.1%	125	64.5%
202 - LITTLE HAITI CONN. (*)	76	99	-23.3%	140	-45.8%	78	-2.5%	119	-36.3%
204 KILLIAN KAT	765	510	49.9%	1,071	-28.6%	758	0.8%		

METROBUS AVERAGE WEEKDAY BOARDINGS BY ROUTE

Route	Average Weekday	Average Weekday	Percent Change	Average Weekday	Percent Change	Average Weekday	Percent Change	Average Weekday	Percent Change
	weekdays May-23	May-22	YOY	Feb-20	Current vs Feb-20	Apr-23	MOM	May-21	YO2Y
207 (7st) - LITTLE HAVANA CIRC	1,749	1,101	58.8%	1,489	17.5%	1,735	0.8%	931	87.9%
208 (8st) - LITTLE HAVANA CIRC	1,556	1,033	50.6%	1,308	19.0%	1,655	-6.0%	897	73.4%
210 - SKYLAKE CIRC (*)	402	325	23.7%	282	42.7%	348	15.6%	371	8.5%
211 - OVERTOWN CIRC. (*)	89	86	4.0%	58	54.2%	87	2.4%	31	186.9%
212 - SWEETWATER CIRC. (*)	23	23	-1.4%	15	54.1%	21	7.2%	27	-16.9%
217 - BUNCHE PARK CIRC (*)	70	73	-3.6%	97	-28.2%	61	15.3%	61	14.7%
238 EAST/WEST CONN.	620	400	55.0%	449	38.0%	599	3.5%	390	58.9%
241 TUTTLE LIMITED	351	91	286.3%			306	14.7%		
246 - NIGHT OWL (*)	62	46	35.3%	94	-33.7%	65	-4.2%	80	-22.5%
248 - PRINCETON CIRCULATOR (*)	103	93	11.5%	135	-23.2%	124	-16.6%	86	20.2%
252 - CORAL REEF MAX	1,056	612	72.5%	851	24.1%	1,085	-2.7%	577	83.1%
254 - BROWNSVILLE CIRC. (*)	7	5	41.4%	19	-62.1%	6	23.3%	10	-25.4%
267 - LUDLAM LIMITED (*)	169	133	27.0%	149	13.6%	179	-5.6%	101	67.7%
272 SUNSET KAT (*)	455	319	42.6%	550	-17.4%	425	7.0%	292	55.5%
277 - 7th AVENUE MAX	859	433	98.2%	683	25.7%	854	0.6%	474	81.1%
286 - NORTH POINTE CIRC. (*)	107	63	69.8%	97	10.1%	91	18.0%	35	206.1%
287 - SAGA BAY MAX	322	210	53.9%	358	-9.9%	327	-1.4%	184	74.9%
288 - KENDALL CRUISER	456	447	2.0%	762	-40.2%	501	-9.0%		
295 EXPRESS - BROWARD BLVD - CIVIC CENTER				233					
296 EXPRESS - SHERIDAN ST - CIVIC CENTER				215					
297-27th AVENUE ORANGE MAX	1,282	824	55.7%	1,356	-5.5%	1,254	2.2%	854	50.1%
301 DADE-MONROE EXPRESS (*)	967	741	30.6%	841	15.0%	964	0.3%	962	0.6%
302 CARD SOUND EXPRESS (*)	107	81	31.9%	86	23.5%	130	-17.8%	78	37.2%
344 (*)	76	48	60.2%	96	-20.6%	62	22.6%	78	-2.8%
500	82	14	478.3%	81	1.7%	70	17.7%	12	599.0%
836 EXPRESS	375	139	170.8%			307	22.4%	90	316.0%
837 EXPRESS	151					165	-8.2%		
GREEN HILLS SHUTTLE (*)	7	4	75.0%	9	-22.2%	27	-73.6%	38	-81.7%
KINGS CREEK SHUTTLE (*)	11	23	-51.6%	13	-15.4%	10	7.3%	12	-8.3%
SIERRA LAKES SHUTTLE (*)	15	17	-7.6%	45	-66.1%	23	-34.4%	43	-64.1%
ROBERT SHARP SHUTTLE (*)	19	35	-45.1%	10	102.1%	26	-26.9%	20	-2.8%
AHEPA SHUTTLE (*)	24	16	46.9%	21	13.3%	25	-6.0%	18	30.6%
Total	184,695	119,055	55.1%	167,711	10.1%	181,221	1.9%	140,703	31.3%

(*) The following routes are entirely operated under contract: 1, 29, 46, 56, 71, 72, 82, 101-A, 115, 155, 202, 210, 211, 212, 217, 246, 248, 254, 267, 272, 286, 301, 302 and 344.

(1) Includes shuttles and those routes which were not run both years.

(2) Several express routes were suspended beginning at the end of March 2020, due to the SARS-CoV-2 pandemic, while other routes had alignment and schedule modifications made to them, in an ongoing effort to optimize service delivery.

METROBUS AVERAGE SATURDAY BOARDINGS BY ROUTE

Route	Average Saturday	Average Saturday	Percent Change	Average Saturday	Percent Change	Average Saturday	Percent Change	Average Saturday	Percent Change
	May-23	May-22	YOY	Feb-20	Current vs Feb-20	Apr-23	MOM	May-21	YO2Y
Saturdays									
1 (*)	185	167	10.6%	215	-14.2%	189	-2.2%	214	-13.7%
2	1,689	1,112	51.9%	1,616	4.5%	1,671	1.1%	1,094	54.3%
3	6,060	3,875	56.4%	5,229	15.9%	6,207	-2.4%	5,130	18.1%
7	2,144	1,666	28.7%	1,887	13.6%	2,245	-4.5%	1,507	42.2%
8	2,604	1,868	39.4%	2,027	28.4%	2,640	-1.4%	2,569	1.4%
9	3,649	2,243	62.7%	3,034	20.3%	3,629	0.5%	3,523	3.6%
10	2,060	1,232	67.2%	1,896	8.7%	2,120	-2.8%	1,661	24.0%
11	6,952	3,869	79.7%	5,182	34.1%	6,894	0.8%	4,514	54.0%
16	1,730	1,084	59.7%	1,566	10.5%	1,811	-4.5%	1,422	21.7%
17	2,562	1,374	86.5%	2,363	8.4%	2,405	6.5%	2,416	6.1%
22	2,497	1,583	57.8%	2,084	19.8%	2,522	-1.0%	1,849	35.0%
24 - Coral Way Limited	1,576	1,124	40.2%	1,165	35.2%	1,626	-3.1%	1,281	23.0%
27	4,438	2,703	64.2%	4,034	10.0%	4,418	0.5%	4,037	9.9%
31 - BUSWAY LOCAL	1,208	514	135.0%	896	34.9%	1,098	10.0%	646	87.0%
32	1,275	877	45.4%	1,029	23.9%	1,301	-2.0%	1,197	6.5%
33	1,242	830	49.7%	951	30.7%	1,206	3.0%	856	45.1%
35	1,586	1,021	55.3%	1,372	15.6%	1,558	1.8%	1,204	31.8%
36	1,668	1,270	31.3%	1,289	29.3%	1,576	5.8%	1,430	16.6%
37	2,124	1,479	43.6%	2,090	1.6%	2,294	-7.4%	1,969	7.8%
38	5,513	2,811	96.1%	4,715	16.9%	5,486	0.5%	3,660	50.6%
40	918	603	52.3%	655	40.3%	936	-1.9%	659	39.3%
42	703	498	41.1%	552	27.4%	703	0.0%	562	25.0%
52	732	424	72.8%	686	6.7%	825	-11.3%	681	7.4%
54	1,986	1,409	41.0%	1,727	15.0%	2,035	-2.4%	1,668	19.0%
55 MARLINS SHUTTLE									
62	1,422	916	55.3%	1,343	5.8%	1,456	-2.4%	1,392	2.1%
71 (*)	271	256	6.0%	252	7.7%	243	11.8%	230	17.7%
72 (*)	408	331	23.3%	350	16.6%	425	-4.1%	259	57.2%
73	1,407	994	41.6%	860	63.5%	1,432	-1.7%	945	48.9%
75	514	328	56.7%	468	9.7%	530	-3.0%	541	-5.0%
77	5,455	3,312	64.7%	4,197	30.0%	5,747	-5.1%	3,532	54.4%
87	632	437	44.5%	402	57.1%	692	-8.7%	465	35.9%
88	1,837	1,299	41.5%	1,620	13.4%	1,913	-4.0%	1,357	35.4%
99	1,089	738	47.5%	849	28.3%	1,146	-5.1%	990	9.9%

METROBUS AVERAGE SATURDAY BOARDINGS BY ROUTE

Route	Average Saturday	Average Saturday	Percent Change	Average Saturday	Percent Change	Average Saturday	Percent Change	Average Saturday	Percent Change
	May-23	May-22	YOY	Feb-20	Current vs Feb-20	Apr-23	MOM	May-21	YO2Y
Saturdays									
101 - A (*)	64	61	4.5%	71	-10.0%	68	-5.7%	72	-11.0%
102 - B	1,095	678	61.4%	851	28.6%	1,228	-10.8%	917	19.4%
103 - C				315				300	
104	550	300	83.5%	468	17.3%	533	3.2%	289	90.0%
105 - E	786	528	48.8%	619	26.9%	786	0.0%	837	-6.1%
107 - G	1,387	893	55.4%	1,066	30.1%	1,449	-4.3%	1,108	25.2%
108 - H	467	284	64.6%	372	25.3%	488	-4.5%	470	-0.8%
110 - J	2,175	1,459	49.1%	1,952	11.4%	2,261	-3.8%	2,103	3.4%
112 - L	7,129	4,477	59.3%	5,667	25.8%	7,153	-0.3%	6,023	18.4%
113 - M	636	300	112.2%	503	26.3%	622	2.1%	360	76.3%
115 (*)	97	103	-6.1%	82	17.7%	78	23.7%	113	-14.5%
119 - S	8,394	5,548	51.3%	6,861	22.3%	8,475	-1.0%	8,014	4.7%
120 - BEACH MAX	5,972	3,385	76.4%	4,744	25.9%	6,263	-4.6%	4,319	38.3%
135	572	280	104.5%	539	6.1%	553	3.3%	367	55.6%
137 - WEST DADE CONN.	1,495	1,021	46.4%	1,027	45.6%	1,467	1.9%	875	70.9%
150 - MIAMI BEACH AIRPORT FLYER	2,205	1,375	60.3%	1,604	37.5%	2,046	7.7%	1,498	47.2%
183	2,119	1,294	63.7%	1,790	18.4%	2,152	-1.6%	1,872	13.2%
200 - CUTLER BAY LOCAL	158	27	478.0%	119	32.6%	178	-11.1%	114	38.1%
202 - LITTLE HAITI CONN. (*)	24	40	-39.4%	50	-51.7%	27	-10.2%	70	-65.4%
207 (7st) - LITTLE HAVANA CIRC	1,139	556	104.7%	1,032	10.3%	1,210	-5.9%	898	26.8%
208 (8st) - LITTLE HAVANA CIRC	977	694	40.9%	1,044	-6.5%	1,246	-21.6%	1,061	-7.9%
210 - SKYLAKE CIRC (*)	116	183	-36.7%	165	-29.7%	124	-6.6%	132	-12.0%
241 TUTTLE LIMITED	204	46	343.5%			184	10.6%		
246 - NIGHT OWL (*)	48	49	-0.5%	84	-42.8%	75	-35.8%	73	-34.3%
252 - CORAL REEF MAX	455	190	139.9%	302	50.7%	478	-4.7%	223	104.0%
286 - NORTH POINTE CIRC. (*)	71	58	21.9%	41	74.0%	75	-5.1%	26	168.9%
301 DADE-MONROE EXPRESS (*)	863	748	15.4%	801	7.8%	891	-3.1%	961	-10.2%
302 CARD SOUND EXPRESS (*)	88	52	67.9%	57	55.0%	107	-18.0%	83	5.2%
338 - WEEKEND EXPRESS	216	176	22.2%	237	-8.9%	239	-10.0%	173	24.3%
500	63	12	420.8%	70	-10.7%	30	108.3%	38	64.5%
12/21 WEEKEND INTERL.	3,116	1,878	66.0%	2,528	23.3%	2,971	4.9%	2,681	16.2%
FEDERATION GARDENS SHUTTLE (*)	19	21	-8.4%	28	-33.1%	19	-2.1%	20	-4.0%
Total	112,864	70,994	59.0%	93,742	20.4%	114,507	-1.4%	91,602	23.2%

METROBUS AVERAGE SUNDAY BOARDINGS BY ROUTE

Route Sundays	Average Sunday	Average Sunday	Percent Change	Average Sunday	Percent Change	Average Sunday	Percent Change	Average Sunday	Percent Change
	May-23	May-22	YOY	Feb-20	Current vs Feb-20	Apr-23	MOM	May-21	YO2Y
1 (*)	153	173	-11.9%	201	-24.0%	150	2.0%	153	-0.4%
2	1,196	690	73.3%	1,335	-10.4%	1,111	7.6%	896	33.4%
3	5,250	3,085	70.2%	4,353	20.6%	4,762	10.3%	4,571	14.9%
7	1,665	1,132	47.1%	1,654	0.6%	1,660	0.3%	1,037	60.6%
8	2,140	1,258	70.1%	1,746	22.6%	2,092	2.3%	1,610	32.9%
9	2,832	1,741	62.7%	2,549	11.1%	2,848	-0.6%	2,712	4.4%
10	1,596	1,092	46.1%	1,441	10.7%	1,620	-1.5%	1,353	18.0%
11	4,485	2,468	81.7%	3,917	14.5%	4,556	-1.6%	2,867	56.5%
16	1,118	684	63.5%	997	12.2%	1,072	4.3%	776	44.2%
17	1,798	1,151	56.2%	1,833	-1.9%	1,877	-4.2%	1,562	15.1%
22	1,947	1,244	56.5%	1,548	25.7%	1,862	4.5%	1,665	16.9%
24 - Coral Way Limited	1,174	826	42.3%	905	29.8%	1,157	1.5%	853	37.7%
27	3,220	1,954	64.8%	2,918	10.4%	3,046	5.7%	2,810	14.6%
31 - BUSWAY LOCAL	766	352	118.0%	715	7.2%	767	-0.1%	480	59.7%
32	753	490	53.7%	772	-2.4%	706	6.6%	647	16.5%
33	768	455	68.8%	607	26.5%	706	8.7%	464	65.5%
35	1,218	654	86.2%	942	29.3%	1,115	9.3%	946	28.7%
36	1,253	870	44.0%	1,111	12.8%	1,257	-0.4%	1,145	9.4%
37	1,860	1,113	67.1%	1,739	6.9%	1,835	1.3%	1,497	24.2%
38	5,287	2,435	117.2%	4,147	27.5%	4,224	25.2%	3,229	63.7%
40	648	351	84.6%	447	44.9%	696	-6.8%	346	87.5%
42	431	327	31.8%	416	3.6%	503	-14.2%	380	13.3%
52	525	298	76.5%	466	12.6%	496	5.8%	433	21.4%
54	1,308	832	57.2%	1,171	11.7%	1,312	-0.3%	1,173	11.5%
55 MARLINS SHUTTLE									
62	917	549	67.1%	891	3.0%	887	3.4%	833	10.0%
71 (*)	172	130	32.3%	162	6.3%	174	-1.0%	155	11.1%
72 (*)	299	277	8.0%	265	13.2%	339	-11.6%	202	48.5%
73	770	451	70.6%	495	55.6%	734	4.9%	380	102.9%
75	336	199	69.1%	271	24.2%	340	-1.2%	334	0.6%
77	3,837	2,049	87.2%	2,815	36.3%	3,888	-1.3%	3,181	20.6%
87	414	253	63.5%	319	29.8%	389	6.4%	278	49.2%
88	1,379	871	58.3%	1,286	7.2%	1,326	4.0%	866	59.3%
99	858	484	77.4%	658	30.4%	768	11.7%	662	29.7%

METROBUS AVERAGE SUNDAY BOARDINGS BY ROUTE

Route	Average Sunday	Average Sunday	Percent Change	Average Sunday	Percent Change	Average Sunday	Percent Change	Average Sunday	Percent Change
	May-23	May-22	YOY	Feb-20	Current vs Feb-20	Apr-23	MOM	May-21	YO2Y
Sundays									
101 - A (*)	55	49	13.4%	56	-0.9%	44	26.1%	57	-2.7%
102 - B	942	562	67.5%	717	31.4%	929	1.3%	731	28.9%
103 - C				212				225	
104	396	207	91.3%	317	24.9%	364	8.8%	193	104.8%
105 - E	703	408	72.2%	616	14.2%	684	2.7%	673	4.5%
107 - G	1,161	661	75.7%	895	29.7%	1,045	11.2%	756	53.7%
108 - H	436	251	73.8%	328	32.8%	413	5.6%	349	25.0%
110 - J	1,788	1,057	69.2%	1,638	9.2%	1,832	-2.4%	1,497	19.4%
112 - L	5,436	3,529	54.1%	4,804	13.2%	5,181	4.9%	4,420	23.0%
113 - M	563	264	113.2%	431	30.7%	497	13.2%	322	74.7%
115 (*)	83	81	1.6%	80	3.2%	61	35.9%	101	-17.9%
119 - S	9,001	5,555	62.0%	7,141	26.1%	8,841	1.8%	7,516	19.8%
120 - BEACH MAX	3,932	2,286	72.0%	3,469	13.3%	3,692	6.5%	3,049	29.0%
135	397	229	73.5%	349	13.7%	400	-0.8%	295	34.5%
137 - WEST DADE CONN.	1,087	652	66.6%	879	23.7%	1,011	7.5%	643	69.1%
150 - MIAMI BEACH AIRPORT FLYER	1,922	1,125	70.9%	1,574	22.1%	2,115	-9.1%	1,509	27.4%
183	1,672	1,039	61.0%	1,413	18.3%	1,505	11.1%	1,414	18.3%
200 - CUTLER BAY LOCAL	56	7	694.3%	59	-5.0%	50	10.8%	68	-17.9%
202 - LITTLE HAITI CONN. (*)	23	38	-38.1%	39	-40.0%	26	-9.3%	65	-64.0%
207 (7st) - LITTLE HAVANA CIRC	886	437	102.6%	796	11.3%	746	18.7%	651	36.2%
208 (8st) - LITTLE HAVANA CIRC	935	481	94.5%	911	2.6%	880	6.3%	741	26.2%
210 - SKYLAKE CIRC (*)	116	173	-32.9%	143	-18.7%	100	16.7%	153	-24.0%
241 TUTTLE LIMITED	193	88	119.7%			156	23.3%		
246 - NIGHT OWL (*)	58	54	7.4%	87	-33.3%	56	3.2%	78	-25.2%
252 - CORAL REEF MAX	354	163	117.5%	199	78.2%	300	18.1%	204	73.5%
301 DADE-MONROE EXPRESS (*)	836	624	34.0%	751	11.3%	841	-0.7%	950	-12.0%
302 CARD SOUND EXPRESS (*)	73	61	19.7%	57	27.7%	90	-18.8%	49	48.1%
338 - WEEKEND EXPRESS	223	178	25.4%	252	-11.4%	241	-7.5%	151	48.0%
500	45	18	147.7%	83	-45.6%	62	-26.9%	9	382.1%
12/21 WEEKEND INTERL.	2,214	1,385	59.9%	2,048	8.1%	2,219	-0.2%	1,589	39.3%
Total	87,959	52,593	67.2%	75,428	16.6%	84,656	3.9%	68,946	27.6%

METROBUS TOTAL MONTHLY BOARDINGS BY ROUTE

Route Monthly Total	Total Month	Total Month	Percent Change	Total Month	Percent Change	Total Month	Percent Change	Total Month	Percent Change
	May-23	May-22	YOY	Feb-20	Current vs Feb-20	Apr-23	MOM	May-21	YO2Y
1 (*)	5,407	4,909	10.1%	5,558	-2.7%	5,616	-3.7%	6,048	-10.6%
2	77,013	49,027	57.1%	75,463	2.1%	71,227	8.1%	53,615	43.6%
3	167,925	111,133	51.1%	146,294	14.8%	157,800	6.4%	152,086	10.4%
7	104,372	75,296	38.6%	86,077	21.3%	96,560	8.1%	62,357	67.4%
8	128,213	82,864	54.7%	95,295	34.5%	117,709	8.9%	114,620	11.9%
9	164,514	99,027	66.1%	135,924	21.0%	152,475	7.9%	154,354	6.6%
10	68,607	46,639	47.1%	64,874	5.8%	64,653	6.1%	54,112	26.8%
11	240,199	160,277	49.9%	187,425	28.2%	231,609	3.7%	181,561	32.3%
12	63,018	32,832	91.9%	55,585	13.4%	57,707	9.2%	42,343	48.8%
16	54,868	35,315	55.4%	49,061	11.8%	52,016	5.5%	40,576	35.2%
17	102,677	64,200	59.9%	96,715	6.2%	96,197	6.7%	80,633	27.3%
19	36,435	17,382	109.6%	30,847	18.1%	29,899	21.9%	25,184	44.7%
21	43,066	24,710	74.3%	36,341	18.5%	36,908	16.7%	35,396	21.7%
22	115,175	66,140	74.1%	89,404	28.8%	104,692	10.0%	76,556	50.4%
24 - Coral Way Limited	63,559	38,402	65.5%	36,237	75.4%	59,289	7.2%	40,710	56.1%
27	188,531	128,362	46.9%	171,282	10.1%	178,287	5.7%	159,244	18.4%
29 (*)	11,420	10,186	12.1%	10,684	6.9%	10,049	13.6%	7,494	52.4%
31 - BUSWAY LOCAL	34,267	19,139	79.0%	29,125	17.7%	32,195	6.4%	20,753	65.1%
32	68,733	42,063	63.4%	56,027	22.7%	61,431	11.9%	43,481	58.1%
33	53,602	33,225	61.3%	40,918	31.0%	47,567	12.7%	32,441	65.2%
34 EXPRESS	38,980	20,156	93.4%	40,159	-2.9%	32,125	21.3%	17,877	118.0%
35	73,748	40,797	80.8%	59,041	24.9%	68,935	7.0%	49,127	50.1%
36	71,963	52,184	37.9%	61,606	16.8%	68,251	5.4%	49,945	44.1%
37	97,713	68,930	41.8%	82,870	17.9%	91,595	6.7%	80,620	21.2%
38	191,549	99,086	93.3%	167,379	14.4%	181,498	5.5%	130,467	46.8%
39 EXPRESS				17,853				5,526	
40	59,141	33,768	75.1%	40,497	46.0%	54,813	7.9%	31,838	85.8%
42	27,801	18,598	49.5%	20,825	33.5%	26,868	3.5%	20,170	37.8%
46 - LIBERTY CITY CONN. (*)	484	568	-14.8%	814	-40.5%	440	10.0%	441	9.8%
51 - FLAGLER MAX	85,801	56,076	53.0%	62,186	38.0%	76,494	12.2%	55,206	55.4%
52	35,002	22,345	56.6%	30,522	14.7%	32,887	6.4%	23,797	47.1%
54	84,962	56,063	51.5%	72,125	17.8%	78,689	8.0%	62,588	35.7%
55 MARLINS SHUTTLE								0	
56 (*)	8,264	6,624	24.8%	7,071	16.9%	7,120	16.1%	4,400	87.8%
57	11,858	6,463	83.5%	8,665	36.8%	9,956	19.1%	6,777	75.0%
62	50,723	32,833	54.5%	46,582	8.9%	46,188	9.8%	46,992	7.9%
71 (*)	18,588	13,164	41.2%	16,118	15.3%	17,329	7.3%	11,268	65.0%
72 (*)	19,220	15,038	27.8%	18,433	4.3%	18,299	5.0%	11,662	64.8%

METROBUS TOTAL MONTHLY BOARDINGS BY ROUTE

Route Monthly Total	Total Month	Total Month	Percent Change	Total Month	Percent Change	Total Month	Percent Change	Total Month	Percent Change
	May-23	May-22	YOY	Feb-20	Current vs Feb-20	Apr-23	MOM	May-21	YO2Y
73	79,733	52,970	50.5%	48,767	63.5%	74,441	7.1%	40,114	98.8%
75	35,195	18,773	87.5%	31,994	10.0%	31,416	12.0%	29,354	19.9%
77	240,120	128,062	87.5%	174,833	37.3%	222,183	8.1%	174,673	37.5%
79 STREET MAX	12,218	7,266	68.2%	7,228	69.0%	10,866	12.4%		
82 - WESTCHESTER CIRC. (*)	1,734	934	85.7%	1,482	17.0%	1,690	2.6%	820	111.5%
87	48,007	32,811	46.3%	33,273	44.3%	43,926	9.3%	31,342	53.2%
88	68,634	43,926	56.2%	54,772	25.3%	64,609	6.2%	49,139	39.7%
93 - BISCAYNE MAX	80,610	46,816	72.2%	66,684	20.9%	69,325	16.3%	36,076	123.4%
95 EXPRESS	24,146	16,187	49.2%	33,796	-28.6%	21,516	12.2%	8,406	187.2%
99	49,617	30,097	64.9%	36,325	36.6%	44,998	10.3%	35,861	38.4%
101 - A (*)	5,451	4,637	17.6%	4,114	32.5%	4,987	9.3%	3,540	54.0%
102 - B	56,589	33,962	66.6%	42,683	32.6%	54,377	4.1%	38,764	46.0%
103 - C				11,682				8,338	
104	25,473	13,691	86.1%	20,351	25.2%	23,815	7.0%	13,118	94.2%
105 - E	38,097	22,326	70.6%	31,302	21.7%	36,348	4.8%	32,884	15.9%
107 - G	55,586	30,939	79.7%	43,178	28.7%	51,908	7.1%	34,768	59.9%
108 - H	17,574	9,780	79.7%	12,624	39.2%	14,824	18.6%	12,696	38.4%
110 - J	87,294	55,083	58.5%	66,481	31.3%	83,299	4.8%	77,986	11.9%
112 - L	245,694	154,989	58.5%	200,268	22.7%	231,769	6.0%	217,619	12.9%
113 - M	26,349	12,505	110.7%	21,548	22.3%	24,692	6.7%	13,975	88.5%
115 (*)	4,157	4,506	-7.7%	4,334	-4.1%	3,324	25.1%	5,265	-21.0%
119 - S	289,787	199,476	45.3%	242,257	19.6%	281,100	3.1%	295,703	-2.0%
120 - BEACH MAX	185,793	129,941	43.0%	170,942	8.7%	181,348	2.5%	157,296	18.1%
132 TRI-RAIL (DORAL)	1,152	37	3013.5%	312	269.2%	1,122	2.7%	387	197.7%
135 (*)	40,172	20,130	99.6%	32,067	25.3%	35,406	13.5%	21,359	88.1%
136	3,441	2,460	39.9%	2,524	36.3%	3,095	11.2%	1,916	79.6%
137 - WEST DADE CONN.	62,058	36,669	69.2%	41,167	50.7%	56,795	9.3%	31,915	94.4%
150 - MIAMI BEACH AIRPORT FLYER	67,042	41,382	62.0%	51,651	29.8%	65,052	3.1%	46,005	45.7%
155 - BISCAYNE GARDENS CIRCULATOR (*)	1,210	824	46.8%	881	37.3%	955	26.7%	564	114.5%
175 - NW MIAMI-DADE EXPRESS				661					
183	96,262	53,440	80.1%	77,570	24.1%	87,128	10.5%	72,665	32.5%
195 EXPRESS - BROWARD BLVD				7,441					
196 EXPRESS - SHERIDAN ST				7,658					
200 - CUTLER BAY LOCAL	5,442	1,045	420.8%	3,984	36.6%	4,059	34.1%	3,347	62.6%
202 - LITTLE HAITI CONN. (*)	1,879	2,460	-23.6%	3,200	-41.3%	1,817	3.4%	3,115	-39.7%
204 KILLIAN KAT	16,820	10,712	57.0%	21,418	-21.5%	15,166	10.9%		

METROBUS TOTAL MONTHLY BOARDINGS BY ROUTE

Route Monthly Total	Total Month	Total Month	Percent Change	Total Month	Percent Change	Total Month	Percent Change	Total Month	Percent Change
	May-23	May-22	YOY	Feb-20	Current vs Feb-20	Apr-23	MOM	May-21	YO2Y
207 (7st) - LITTLE HAVANA CIRC	47,465	27,980	69.6%	38,127	24.5%	44,478	6.7%	27,015	75.7%
208 (8st) - LITTLE HAVANA CIRC	42,812	27,352	56.5%	35,018	22.3%	43,731	-2.1%	27,688	54.6%
210 - SKYLAKE CIRC (*)	9,894	8,599	15.1%	7,033	40.7%	8,080	22.5%	8,990	10.1%
211 - OVERTOWN CIRC. (*)	1,966	1,804	9.0%	1,159	69.6%	1,745	12.7%	623	215.6%
212 - SWEETWATER CIRC. (*)	500	484	3.3%	295	69.5%	424	17.9%	547	-8.6%
217 - BUNCHE PARK CIRC (*)	1,540	1,525	1.0%	1,949	-21.0%	1,214	26.9%	1,221	26.1%
238 EAST/WEST CONN.	13,646	8,403	62.4%	8,987	51.8%	11,988	13.8%	7,809	74.7%
241 TUTTLE LIMITED	9,505	2,619	262.9%			7,824	21.5%		
246 - NIGHT OWL (*)	1,847	1,480	24.8%	2,641	-30.1%	1,951	-5.3%	2,433	-24.1%
248 - PRINCETON CIRCULATOR (*)	2,272	1,945	16.8%	2,690	-15.5%	2,478	-8.3%	1,718	32.2%
252 - CORAL REEF MAX	26,822	14,594	83.8%	19,325	38.8%	25,597	4.8%	13,874	93.3%
254 - BROWNSVILLE CIRC. (*)	160	108	48.1%	384	-58.3%	118	35.6%	195	-17.9%
267 - LUDLAM LIMITED (*)	3,722	2,798	33.0%	2,978	25.0%	3,585	3.8%	2,018	84.4%
272 SUNSET KAT (*)	10,002	6,696	49.4%	11,004	-9.1%	8,494	17.8%	5,846	71.1%
277 - 7th AVENUE MAX	18,896	9,101	107.6%	13,669	38.2%	17,073	10.7%	9,486	99.2%
286 - NORTH POINTE CIRC. (*)	2,634	1,554	69.5%	2,145	22.8%	2,185	20.5%	830	217.3%
287 - SAGA BAY MAX	7,093	4,400	61.2%	7,160	-0.9%	6,540	8.5%	3,687	92.4%
288 - KENDALL CRUISER	10,037	9,393	6.9%	15,249	-34.2%	10,025	0.1%		
295 EXPRESS - BROWARD BLVD - CIVIC CENTER				4,668					
296 EXPRESS - SHERIDAN ST - CIVIC CENTER				4,297					
297-27th AVENUE ORANGE MAX	28,210	17,294	63.1%	27,125	4.0%	25,088	12.4%	17,080	65.2%
301 DADE-MONROE EXPRESS (*)	28,915	22,290	29.7%	23,838	21.3%	27,951	3.4%	29,744	-2.8%
302 CARD SOUND EXPRESS (*)	3,058	2,269	34.8%	2,236	36.8%	3,575	-14.5%	2,264	35.1%
338 - WEEKEND EXPRESS	1,978	1,597	23.9%	2,191	-9.7%	2,404	-17.7%	1,621	22.0%
344 (*)	1,677	999	67.9%	1,919	-12.6%	1,244	34.8%	1,568	7.0%
500	2,288	442	417.6%	2,301	-0.6%	1,858	23.1%	442	417.6%
836 EXPRESS	8,260	2,912	183.7%			6,134	34.7%	1,805	357.6%
837 EXPRESS	3,328					3,296	1.0%		
12/21 WEEKEND INTERL.	23,537	15,819	48.8%	20,830	13.0%	25,951	-9.3%	22,943	2.6%
GREEN HILLS SHUTTLE (*)	28	16	75.0%	36	-22.2%	106	-73.6%	153	-81.7%
KINGS CREEK SHUTTLE (*)	44	91	-51.6%	52	-15.4%	41	7.3%	48	-8.3%
SIERRA LAKES SHUTTLE (*)	61	66	-7.6%	180	-66.1%	93	-34.4%	170	-64.1%
ROBERT SHARP SHUTTLE (*)	96	140	-31.4%	38	152.6%	105	-8.6%	79	21.5%
AHEPA SHUTTLE (*)	94	64	46.9%	83	13.3%	100	-6.0%	72	30.6%
FEDERATION GARDENS SHUTTLE (*)	76	83	-8.4%	142	-46.5%	97	-21.6%	99	-23.2%
Total	4,953,197	3,097,574	59.9%	4,123,083	20.1%	4,618,302	7.3%	3,683,343	34.5%

YEAR-OVER-YEAR BUS RIDERSHIP BY ROUTE SERVICE TYPE

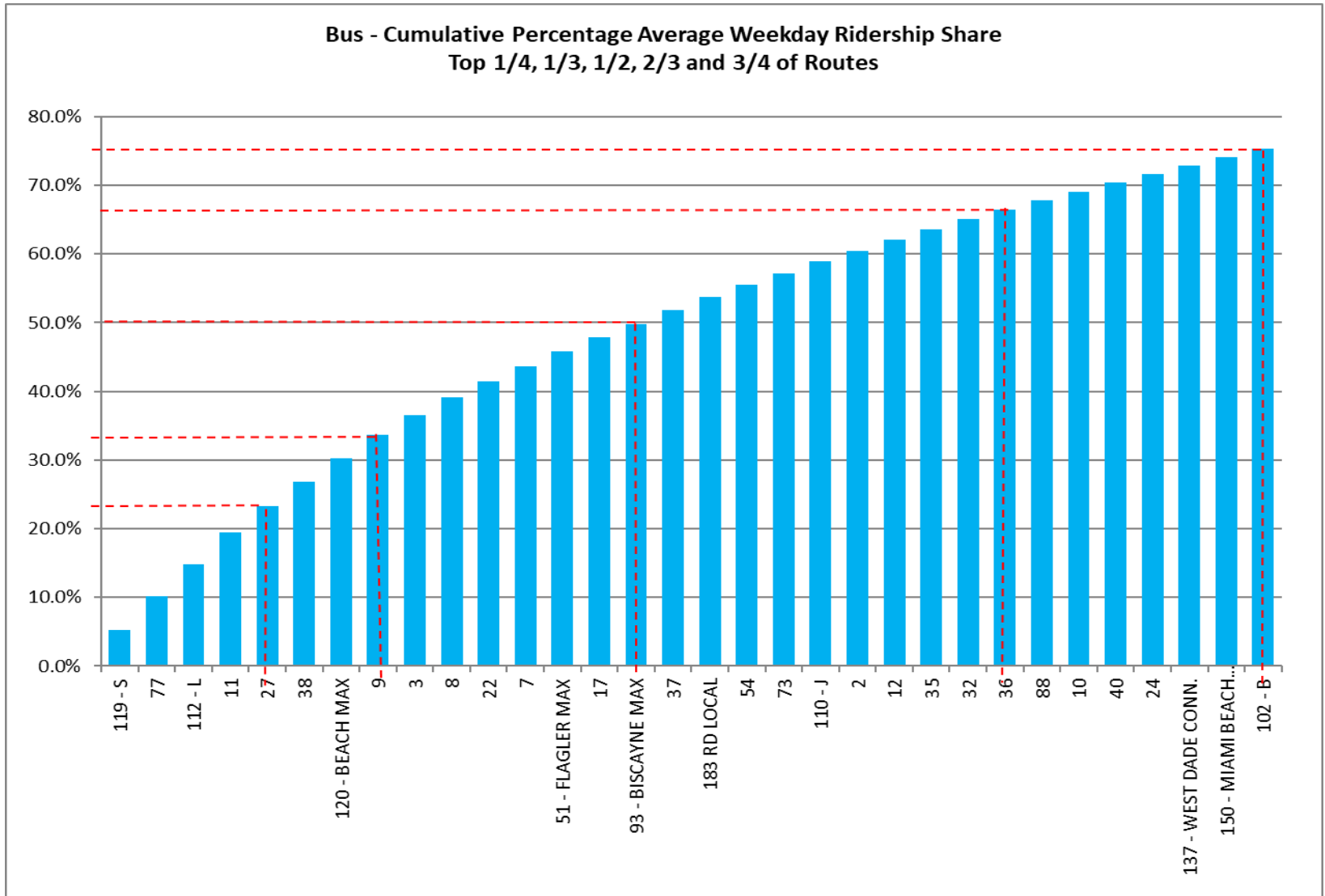
Boardings by Service Type and Route	Average Weekday	Average Weekday	Percent Change	Average Saturday	Average Saturday	Percent Change	Average Sunday	Average Sunday	Percent Change	Total Monthly	Total Monthly	Percent Change
	May-23	May-22	23 vs 22	May-23	May-22	23 vs 22	May-23	May-22	23 vs 22	May-23	May-22	23 vs 22
Directly Operated Express Routes (1)												
34 EXPRESS	1,772	960	84.6%							38,980	20,156	93.4%
39 EXPRESS												
95-EXPRESS	1,098	771	42.4%							24,146	16,187	49.2%
150-MIAMI BEACH AIRPORT FLYER	2,210	1,387	59.3%	2,205	1,375	60.3%	1,922	1,125	70.9%	67,042	41,382	62.0%
175 - NW MIAMI-DADE EXPRESS												
195 EXPRESS - BROWARD BLVD												
196 EXPRESS - SHERIDAN ST												
295 EXPRESS - BROWARD BLVD - CIVIC CENTER												
296 EXPRESS - SHERIDAN ST - CIVIC CENTER												
204 KAT-KILLIAN	765	510								16,820	10,712	
288 KENDALL CRUISER	456	447								10,037	9,393	
338 - WEEKEND EXPRESS				216	176	22.2%	223	178	25.4%	1,978	1,597	23.9%
836 EXPRESS	375	139	170.8%							8,260	2,912	183.7%
837 EXPRESS	151									3,328		
Subtotal Express Routes	6,827	4,214	62.0%	2,420	1,551	56.0%	2,145	1,303	64.7%	170,591	102,339	66.7%
Percentage of All Bus Routes	3.7%	3.5%		2.1%	2.2%		2.4%	2.5%		3.4%	3.3%	
Contracted Routes												
1	178	153	16.4%	185	167	10.6%	153	173	-11.9%	5,407	4,909	10.1%
29	519	485	7.0%							11,420	10,186	12.1%
46 - LIBERTY CITY CONN.	22	27	-18.7%							484	568	-14.8%
56	376	315	19.1%							8,264	6,624	24.8%
71	756	541	39.8%	271	256	6.0%	172	130	32.3%	18,588	13,164	41.2%
72	731	574	27.5%	408	331	23.3%	299	277	8.0%	19,220	15,038	27.8%
82 - WESTCHESTER CIRC	72	37	95.5%	37	40	-7.5%				1,734	934	85.7%
101 - A	224	195	14.5%	64	61	4.5%	55	49	13.4%	5,451	4,637	17.6%
115	153	172	-11.1%	97	103	-6.1%	83	81	1.6%	4,157	4,506	-7.7%
155 - BISCAYNE GARDENS CIRC	55	39	40.2%							1,210	824	46.8%
202 - LITTLE HAITI CONN.	76	99	-23.3%	24	40	-39.4%	23	38	-38.1%	1,879	2,460	-23.6%
210 - SKYLAKE CIRC	402	325	23.7%	116	183	-36.7%	116	173	-32.9%	9,894	8,599	15.1%
211-OVERTOWN CIRC	89	86	4.0%							1,966	1,804	9.0%
212-SWEETWATER CIRC	23	23	-1.4%							500	484	3.3%
217 - BUNCHE PARK CIRC	70	73	-3.6%							1,540	1,525	1.0%
246 - NIGHT OWL	62	46	35.3%	48	49	-0.5%	58	54	7.4%	1,847	1,480	24.8%
248 - PRINCETON CIRCULATOR	103	93	11.5%							2,272	1,945	16.8%
254-BROWNSVILLE CIRC	7	5	41.4%							160	108	48.1%
286-NORTH POINTE CIRC	107	63	69.8%	71	58	21.9%				2,634	1,554	69.5%
344	76	48	60.2%							1,677	999	67.9%
Subtotal Contracted Reg. & Circ. Routes	4,101	3,397	20.7%	1,320	1,287	2.6%	959	975	-1.6%	100,304	82,348	21.8%
Percentage of All Bus Routes	2.2%	2.9%		1.2%	1.8%		1.1%	1.9%		2.0%	2.7%	

(1) Several express routes were suspended beginning at the end of March 2020, due to the SARS-CoV-2 pandemic, while other routes had alignment and schedule modifications made to them, in an ongoing effort to optimize service delivery..

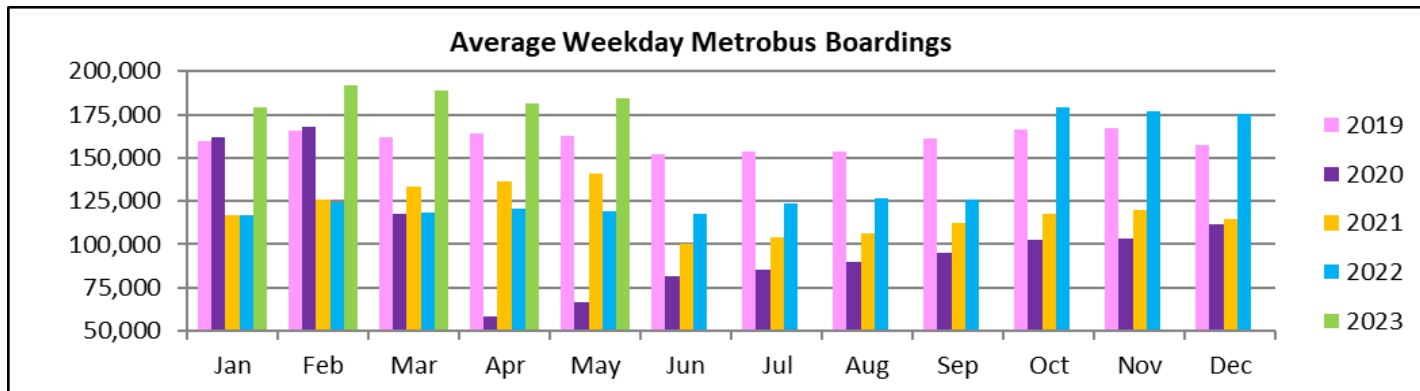
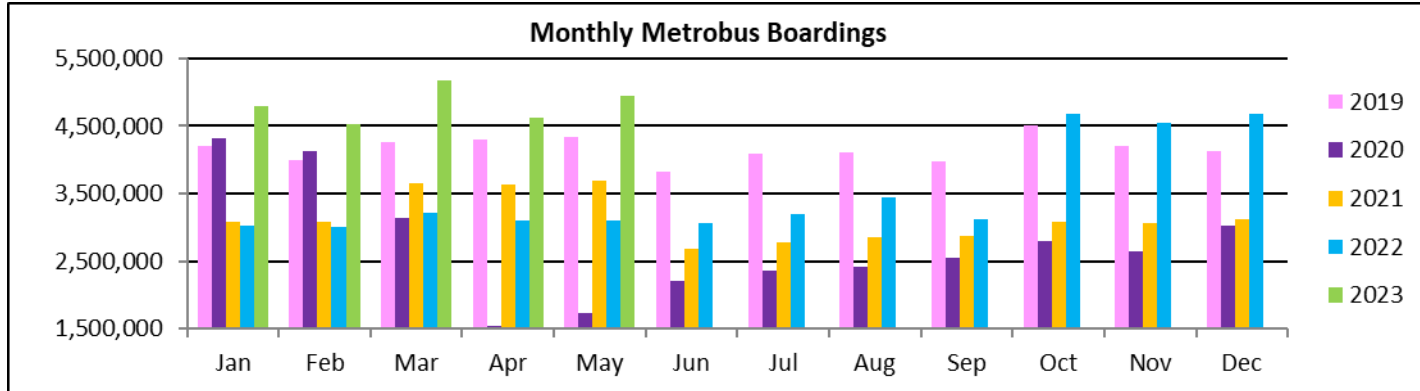
YEAR-OVER-YEAR BUS RIDERSHIP BY ROUTE SERVICE TYPE

Boardings by Service Type and Route	Average Weekday	Average Weekday	Percent Change	Average Saturday	Average Saturday	Percent Change	Average Sunday	Average Sunday	Percent Change	Total Monthly	Total Monthly	Percent Change
	May-23	May-22	23 vs 22	May-23	May-22	23 vs 22	May-23	May-22	23 vs 22	May-23	May-22	23 vs 22
Contracted Express Routes												
272 SUNSET-KAT	455	319	42.6%							10,002	6,696	49.4%
301-DADE MONROE EXPRESS	967	741	30.6%	863	748	15.4%	836	624	34.0%	28,915	22,290	29.7%
302-CARD SOUND EXPRESS	107	81	31.9%	88	52	67.9%	73	61	19.7%	3,058	2,269	34.8%
Subtotal Contracted Express Routes	1,529	1,140	34.0%	951	800	18.9%	909	685	32.7%	41,975	31,255	34.3%
Percentage of All Bus Routes	0.8%	1.0%		0.8%	1.1%		1.0%	1.3%		0.8%	1.0%	
Limited Stop Routes												
24-CORAL WAY LIMITED	2,336	1,379	69.4%	1,576	1,124	40.2%	1,174	826	42.3%	63,559	38,402	65.5%
51-FLAGLER MAX	3,900	2,670	46.1%							85,801	56,076	53.0%
79 STREET MAX	555	346	60.5%							12,218	7,266	68.2%
93 - BISCAYNE MAX	3,664	2,229	64.4%							80,610	46,816	72.2%
120 - BEACH MAX	6,466	4,890	32.2%	5,972	3,385	76.4%	3,932	2,286	72.0%	185,793	129,941	43.0%
241 TUTTLE LIMITED	351	91	286.3%	204	46	343.5%	193	88	119.7%	9,505	2,619	262.9%
252-CORAL REEF MAX	1,056	612	72.5%	455	190	139.9%	354	163	117.5%	26,822	14,594	83.8%
267-LUDLAM LIMITED (contracted)	169	133	27.0%							3,722	2,798	33.0%
277-7TH AVENUE MAX	859	433	98.2%							18,896	9,101	107.6%
287-SAGA BAY MAX	322	210	53.9%							7,093	4,400	61.2%
297-27th AVENUE ORANGE MAX	1,282	824	55.7%							28,210	17,294	63.1%
Subtotal Limited Stop Routes	20,961	13,817	51.7%	8,207	4,744	73.0%	5,653	3,362	68.2%	522,229	329,307	58.6%
Percentage of All Bus Routes	11.3%	11.6%		7.3%	6.7%		6.4%	6.4%		10.5%	10.6%	
Directly Operated Free Routes												
132 -TRI-RAIL DORAL	52	3	1598.3%							1,152	37	3013.5%
200-CUTLER BAY LOCAL	206	56	266.3%	158	27	478.0%	56	7	694.3%	5,442	1,045	420.8%
Subtotal Free Directly Operated Routes	258	59	335.6%	158	27	478.0%	56	7	694.3%	6,594	1,082	509.4%
Percentage of All Bus Routes	0.1%	0.0%		0.1%	0.0%		0.1%	0.0%		0.1%	0.0%	
Shuttles												
55-MARLINS SHUTTLE												
Percentage of All Bus Routes												
Contractor-Operated Lifeline Routes												
GREEN HILLS SHUTTLE	7	4	75.0%							28	16	75.0%
KINGS CREEK SHUTTLE	11	23	-51.6%							44	91	-51.6%
SIERRA LAKES SHUTTLE	15	17	-7.6%							61	66	-7.6%
ROBERT SHARP SHUTTLE	19	35	-45.1%							96	140	-31.4%
AHEPA SHUTTLE	24	16	46.9%							94	64	46.9%
FEDERATION GARDENS SHUTTLE				19	21	-8.4%				76	83	-8.4%
Subtotal Contractor-Operated Lifeline Routes	76	94	-19.4%	19	21	-8.4%				399	460	-13.3%
Percentage of All Bus Routes	0.0%	0.1%		0.0%	0.0%					0.0%	0.0%	
All Other (Regular) Routes												
	150,944	96,332	56.7%	99,789	62,564	59.5%	78,237	46,262	69.1%	4,111,105	2,550,783	61.2%
Percentage of All Bus Routes	81.7%	80.9%		88.4%	88.1%		88.9%	88.0%		83.0%	82.3%	
Total Bus System	184,695	119,055	55.1%	112,864	70,994	59.0%	87,959	52,593	67.2%	4,953,197	3,097,574	59.9%

METROBUS CUMULATIVE PERCENTAGE RIDERSHIP SHARE



TOTAL MONTHLY AND AVERAGE WEEKDAY RIDERSHIP YEAR OVER YEAR COMPARISON CHARTS – METROBUS

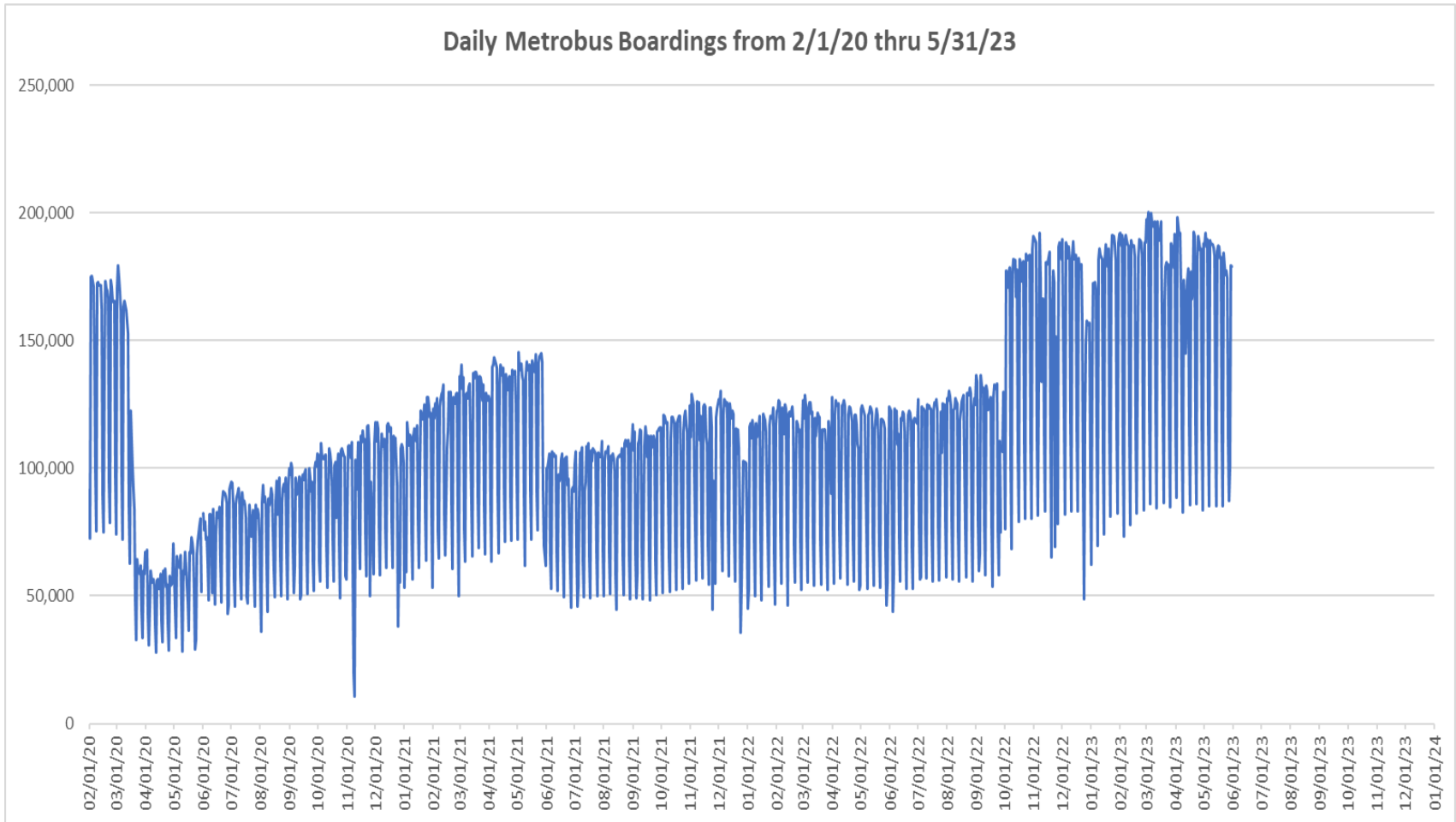


**“TOP 5 / BOTTOM 5” BUS ROUTES AVERAGE WEEKDAY RIDERSHIP PERFORMANCE
YEAR OVER YEAR COMPARISONS**

Route	May-23	May-22	Absolute Delta (1)	Percent Delta (2)
77	9,051	4,882	4,169	85.4%
112 - L	8,636	5,520	3,117	56.5%
38	6,503	3,487	3,015	86.5%
119 - S	9,600	6,855	2,745	40.0%
11	8,635	6,190	2,445	39.5%
202 - LITTLE HAITI CONN. (*)	76	99	-23	-23.3%
115 (*)	153	172	-19	-11.1%
46 - LIBERTY CITY CONN. (*)	22	27	-5	-18.7%
217 - BUNCHE PARK CIRC (*)	70	73	-3	-3.6%
212 - SWEETWATER CIRC. (*)	23	23	0	-1.4%

- (1) Averages rounded to the nearest boarding, data as reported by farebox (NFS) and/or automatic passenger counter (APC) system, depending on year; Lifeline shuttles excluded.
- (2) As a result of the SARS-CoV-2 pandemic, rides were fare-free beginning March 22, 2020. Fares were reinstated June 1, 2021, and ridership data from the farebox rather than the APC system is utilized from that date thru the end of September 2022. Beginning October 1, 2022, ridership is again reported from the APC system coupled with a new enhanced sensor system.
- (*) Contracted route.

DAILY METROBUS RIDERSHIP SINCE FEBRUARY 1, 2020



- (1) National Emergency was declared on 3/13/20 as a result of the SARS-CoV-2 pandemic.
- (2) There was no Metrobus, Metrorail and Metromover service on 5/31/20, as a safety precaution, and no service for any of the four modes on 9/28/22 as a result of Hurricane Ian.
- (3) The dip at the start of the second week of November 2020 is due to Hurricane Eta.
- (4) The reduction seen beginning 6/1/21 is partly due to the resumption of fares and partly the result of resuming reporting Cubic farebox data rather than bus APC counts; the jump seen at the start of October 2022 is due to the return to APC bus ridership counts reporting on 10/1/22.
- (5) Periodic (weekly) variations are prominent, since weekday ridership is almost always significantly higher than weekend or holiday ridership.

METROBUS PARKING PATRONAGE SUMMARY May 2023

PARK-RIDE LOT	ACTUAL AVAILABLE SPACES	ACTUAL OCCUPANCY	PERCENT OCCUPANCY
Transitway / SW 152nd St	200	146	73%
Transitway / SW 168th St (*)	149	0	0%
Transitway / SW 200th Street	100	33	33%
Transitway / SW 112 Ave (Target)	450	168	37%
Transitway / SW 244th St	95	66	69%
Transitway / SW 296th St	139	22	16%
Transitway / SW 344th St	248	167	67%
Coral Reef Drive 117/ Turnpike	95	84	88%
Golden Glades Facility	2,150	372	17%
Hammocks Town Center (SW 152 Ave / SW 104 St)	50	20	40%
Kendall Dr./SW 127th Ave	161	12	7%
West Kendall Transit Term (Kendall Dr / SW162 Ave)	40	12	30%
NW 7th Avenue Transit Village (NW 7 Ave / NW 62 St)	25	17	68%
Miami Gardens Dr. / NW 73rd Ave	136	1	1%
Dolphin Station	348	82	24%
Tamiami Station (eff 11-2022)	442	50	11%
I-75 / Miami Gardens Dr (**)	298	0	0%
TOTAL	5,126	1,252	24%

(*) Closed for construction beginning January 2022

(**) Route 175 Suspended 3/27/2020

Metrorail



METRORAIL AVERAGE WEEKDAY BOARDINGS BY STATION (†)

Weekdays	Average Weekday	Average Weekday	Percent Change	Average Weekday	Percent Change	Average Weekday	Percent Change	Average Weekday	Percent Change
STATIONS	May-23	May-22	YOY	Feb-20	Current vs Feb-20	Apr-23	MOM	May-21	YO2Y
ALLAPATTAH	1,634	1,408	16.1%	1,942	-15.8%	1,624	0.6%	1,305	25.2%
BRICKELL	5,079	4,285	18.5%	6,529	-22.2%	4,729	7.4%	4,296	18.2%
BROWNSVILLE	671	634	5.8%	862	-22.2%	692	-3.0%	692	-3.1%
CIVIC CENTER	4,027	3,429	17.4%	6,143	-34.4%	4,005	0.5%	2,988	34.8%
COCONUT GROVE	1,470	1,287	14.2%	1,795	-18.1%	1,461	0.6%	1,175	25.1%
CULMER	1,062	872	21.7%	1,392	-23.7%	1,076	-1.3%	935	13.6%
DADELAND NORTH	4,013	3,436	16.8%	5,926	-32.3%	4,018	-0.1%	3,991	0.5%
DADELAND SOUTH	4,537	3,715	22.1%	7,150	-36.6%	4,477	1.3%	3,452	31.4%
DOUGLAS ROAD (*)	740	2,605	-71.6%	3,624	-79.6%			1,394	-47.0%
DR. MARTIN LUTHER KING, JR.	839	779	7.7%	1,157	-27.5%	822	2.1%	792	5.9%
EARLINGTON HEIGHTS	1,285	1,160	10.8%	1,662	-22.7%	1,275	0.8%	999	28.6%
GOVERNMENT CENTER	6,505	5,709	13.9%	10,557	-38.4%	6,844	-5.0%	4,221	54.1%
HIALEAH	965	994	-3.0%	1,253	-23.0%	1,171	-17.6%	728	32.4%
MIAMI INTERNATIONAL AIRPORT	1,343	1,140	17.8%	1,711	-21.5%	1,274	5.5%	823	63.1%
NORTHSIDE	1,298	1,119	16.0%	1,476	-12.1%	1,286	0.9%	1,096	18.4%
OKEECHOBEE	908	739	22.8%	1,164	-22.0%	907	0.1%	715	27.0%
OVERTOWN / ARENA	1,741	1,333	30.6%	2,274	-23.4%	1,709	1.9%	899	93.7%
PALMETTO	1,310	1,055	24.2%	1,543	-15.1%	1,301	0.7%	871	50.4%
SANTA CLARA	682	556	22.7%	812	-15.9%	674	1.2%	526	29.8%
SOUTH MIAMI	1,888	1,734	8.8%	3,015	-37.4%	2,016	-6.4%	1,231	53.4%
TRI-RAIL	1,126	914	23.1%	1,207	-6.7%	1,122	0.4%	879	28.1%
UNIVERSITY	1,445	1,177	22.8%	2,784	-48.1%	1,992	-27.5%	776	86.3%
VIZCAYA	1,182	984	20.2%	1,390	-14.9%	1,162	1.7%	842	40.4%
TOTAL	45,749	41,065	11.4%	67,367	-32.1%	45,635	0.2%	35,627	28.4%

(†) In this table and those which follow, "YOY" stands for "year-over-year", "MOM" for "month-over-month" and "YO2Y" for "year over two years", i.e., current month vs 12 months prior, one month prior and 24 months prior, respectively.

(††) Due to effects from the SARS-CoV-2 pandemic; rides were fare-free beginning March 22, 2020; fares were reinstated on June1, 2021, in part accounting for the drop in ridership from May 2021.

(*) No data at Douglas Road Station, due to construction.

METRORAIL AVERAGE SATURDAY BOARDINGS BY STATION

Saturdays	Average Saturday	Average Saturday	Percent Change	Average Saturday	Percent Change	Average Saturday	Percent Change	Average Saturday	Percent Change
STATIONS	May-23	May-22	YOY	Feb-20	Current vs Feb-20	Apr-23	MOM	May-21	YO2Y
ALLAPATTAH	896	848	5.7%	1,051	-14.8%	922	-2.8%	834	7.4%
BRICKELL	2,461	2,119	16.1%	2,811	-12.5%	2,327	5.7%	2,811	-12.5%
BROWNSVILLE	429	405	5.9%	520	-17.4%	447	-4.0%	498	-13.9%
CIVIC CENTER	689	655	5.2%	959	-28.2%	767	-10.2%	767	-10.1%
COCONUT GROVE	838	725	15.7%	928	-9.7%	768	9.2%	711	17.9%
CULMER	484	430	12.7%	721	-32.8%	493	-1.7%	587	-17.5%
DADELAND NORTH	1,426	1,306	9.1%	1,994	-28.5%	1,416	0.7%	2,037	-30.0%
DADELAND SOUTH	1,957	1,624	20.5%	2,625	-25.5%	1,940	0.9%	2,125	-7.9%
DOUGLAS ROAD	390	1,177	-66.9%	1,319	-70.4%			756	-48.4%
DR. MARTIN LUTHER KING, JR.	467	427	9.4%	625	-25.2%	484	-3.5%	531	-11.9%
EARLINGTON HEIGHTS	751	690	8.8%	935	-19.8%	744	0.8%	682	10.1%
GOVERNMENT CENTER	2,817	2,668	5.6%	4,262	-33.9%	3,032	-7.1%	2,465	14.3%
HIALEAH	472	506	-6.9%	583	-19.1%	621	-24.0%	457	3.2%
MIAMI INTERNATIONAL AIRPORT	976	920	6.1%	1,330	-26.6%	951	2.7%	847	15.3%
NORTHSIDE	820	664	23.5%	878	-6.6%	831	-1.3%	901	-9.0%
OKEECHOBEE	321	296	8.4%	408	-21.5%	356	-10.0%	403	-20.3%
OVERTOWN / ARENA	681	495	37.7%	678	0.4%	635	7.2%	480	41.7%
PALMETTO	429	338	26.9%	458	-6.4%	417	2.9%	366	17.3%
SANTA CLARA	344	305	12.7%	422	-18.4%	338	1.9%	327	5.3%
SOUTH MIAMI	869	843	3.0%	1,256	-30.8%	954	-8.9%	715	21.5%
TRI-RAIL	539	414	30.2%	614	-12.3%	537	0.2%	558	-3.6%
UNIVERSITY	531	386	37.4%	714	-25.7%	691	-23.3%	407	30.3%
VIZCAYA	535	514	4.1%	622	-14.0%	566	-5.5%	512	4.5%
TOTAL	20,118	18,754	7.3%	26,714	-24.7%	20,238	-0.6%	20,777	-3.2%

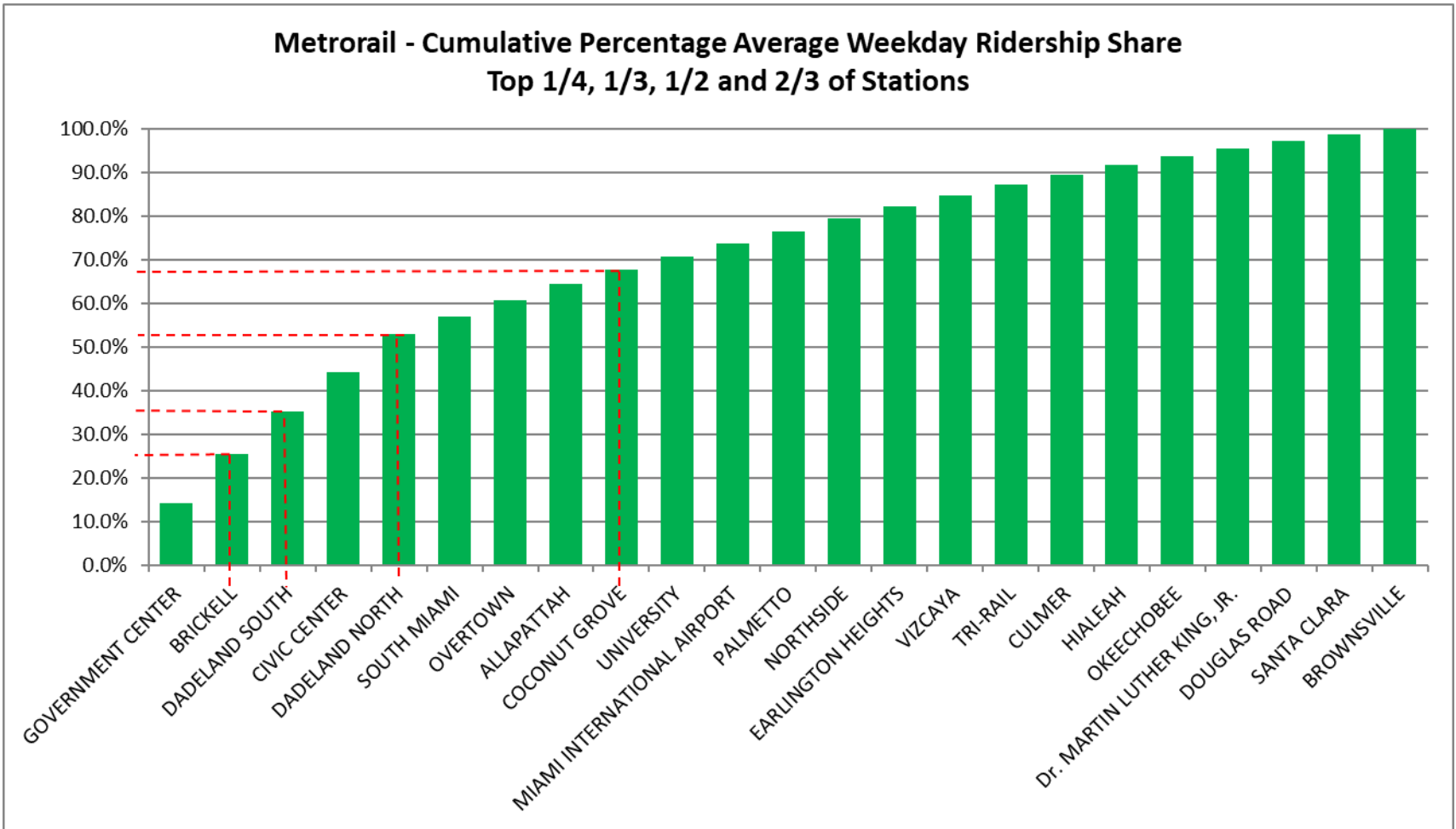
METRORAIL AVERAGE SUNDAY BOARDINGS BY STATION

Sundays	Average Sunday	Average Sunday	Percent Change	Average Sunday	Percent Change	Average Sunday	Percent Change	Average Sunday	Percent Change
STATIONS	May-23	May-22	YOY	Feb-20	Current vs Feb-20	Apr-23	MOM	May-21	YO2Y
ALLAPATTAH	622	597	4.2%	791	-21.4%	647	-3.9%	594	4.6%
BRICKELL	1,810	1,790	1.1%	2,379	-23.9%	1,680	7.8%	2,257	-19.8%
BROWNSVILLE	268	310	-13.7%	406	-34.1%	277	-3.3%	381	-29.8%
CIVIC CENTER	517	524	-1.5%	791	-34.7%	541	-4.5%	630	-18.0%
COCONUT GROVE	625	541	15.6%	838	-25.4%	557	12.3%	525	19.0%
CULMER	366	351	4.1%	616	-40.7%	365	0.1%	445	-17.9%
DADELAND NORTH	966	963	0.3%	1,685	-42.7%	978	-1.2%	1,417	-31.8%
DADELAND SOUTH	1,422	1,259	12.9%	2,210	-35.7%	1,450	-2.0%	1,516	-6.2%
DOUGLAS ROAD	249	829	-70.0%	1,090	-77.1%			576	-56.8%
DR. MARTIN LUTHER KING, JR.	328	322	1.9%	506	-35.2%	350	-6.3%	376	-12.7%
EARLINGTON HEIGHTS	533	518	2.8%	799	-33.4%	551	-3.4%	518	2.8%
GOVERNMENT CENTER	2,062	2,006	2.8%	4,044	-49.0%	2,287	-9.9%	1,811	13.8%
HIALEAH	386	351	9.9%	472	-18.1%	432	-10.6%	335	15.4%
MIAMI INTERNATIONAL AIRPORT	982	857	14.6%	1,343	-26.8%	945	3.9%	796	23.5%
NORTHSIDE	578	510	13.3%	653	-11.4%	633	-8.7%	622	-7.0%
OKEECHOBEE	220	161	36.3%	273	-19.7%	232	-5.4%	242	-9.4%
OVERTOWN / ARENA	465	448	3.7%	544	-14.6%	482	-3.6%	418	11.1%
PALMETTO	238	183	30.1%	336	-29.2%	244	-2.3%	212	12.1%
SANTA CLARA	224	223	0.3%	280	-20.0%	224	-0.4%	205	8.8%
SOUTH MIAMI	602	616	-2.2%	987	-39.0%	657	-8.4%	504	19.4%
TRI-RAIL	381	318	19.7%	528	-27.9%	392	-2.9%	416	-8.6%
UNIVERSITY	342	299	14.2%	608	-43.8%	480	-28.7%	257	33.2%
VIZCAYA	344	397	-13.4%	524	-34.4%	382	-9.9%	349	-1.5%
TOTAL	14,526	14,374	1.1%	22,701	-36.0%	14,786	-1.8%	15,403	-5.7%

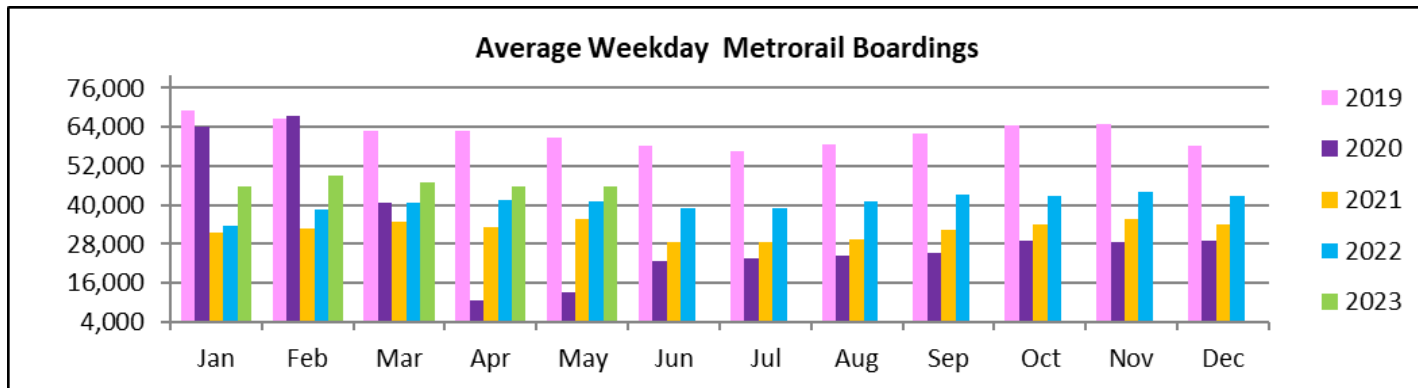
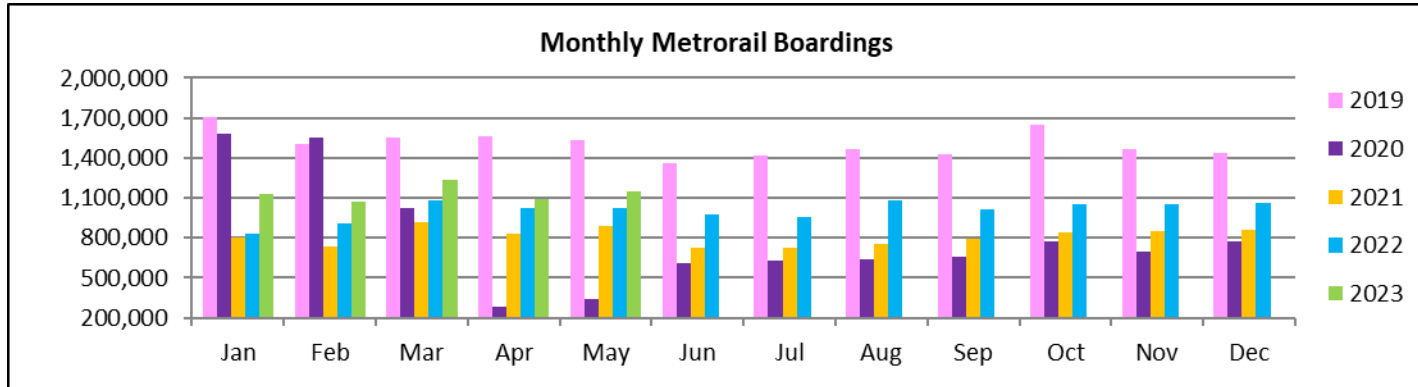
METRORAIL TOTAL MONTHLY BOARDINGS BY STATION

Monthly Totals	Total Month	Total Month	Percent Change	Total Month	Percent Change	Total Month	Percent Change	Total Month	Percent Change
STATIONS	May-23	May-22	YOY	Feb-20	Current vs Feb-20	Apr-23	MOM	May-21	YO2Y
ALLAPATTAH	42,878	36,669	16.9%	46,868	-8.5%	40,319	6.3%	34,012	26.1%
BRICKELL	130,881	109,379	19.7%	152,259	-14.0%	114,619	14.2%	113,698	15.1%
BROWNSVILLE	17,852	16,796	6.3%	21,285	-16.1%	17,455	2.3%	18,717	-4.6%
CIVIC CENTER	93,348	77,408	20.6%	128,921	-27.6%	86,647	7.7%	67,548	38.2%
COCONUT GROVE	38,885	33,187	17.2%	43,580	-10.8%	35,846	8.5%	30,432	27.8%
CULMER	27,213	22,256	22.3%	33,497	-18.8%	25,808	5.4%	24,441	11.3%
DADELAND NORTH	98,873	83,050	19.1%	132,894	-25.6%	92,333	7.1%	99,120	-0.2%
DADELAND SOUTH	114,816	91,956	24.9%	162,416	-29.3%	106,479	7.8%	89,242	28.7%
DOUGLAS ROAD	10,869	64,466	-83.1%	82,141	-86.8%			9,038	20.3%
DR. MARTIN LUTHER KING, JR.	22,047	20,055	9.9%	27,980	-21.2%	20,605	7.0%	20,977	5.1%
EARLINGTON HEIGHTS	34,125	30,282	12.7%	40,697	-16.1%	31,967	6.8%	26,718	27.7%
GOVERNMENT CENTER	164,258	142,014	15.7%	243,414	-32.5%	163,480	0.5%	108,289	51.7%
HIALEAH	24,848	25,051	-0.8%	29,516	-15.8%	28,678	-13.4%	18,946	31.2%
MIAMI INTERNATIONAL AIRPORT	38,564	32,912	17.2%	46,115	-16.4%	34,953	10.3%	25,599	50.6%
NORTHSIDE	34,856	29,302	19.0%	36,127	-3.5%	33,037	5.5%	30,303	15.0%
OKEECHOBEE	22,287	17,785	25.3%	26,026	-14.4%	21,088	5.7%	17,894	24.6%
OVERTOWN / ARENA	42,988	32,373	32.8%	49,911	-13.9%	39,765	8.1%	22,961	87.2%
PALMETTO	31,812	24,595	29.3%	33,944	-6.3%	29,323	8.5%	20,660	54.0%
SANTA CLARA	17,619	14,318	23.1%	19,245	-8.4%	16,290	8.2%	13,431	31.2%
SOUTH MIAMI	48,113	43,508	10.6%	69,412	-30.7%	48,372	-0.5%	31,357	53.4%
TRI-RAIL	28,845	22,747	26.8%	29,120	-0.9%	27,077	6.5%	22,963	25.6%
UNIVERSITY	35,792	28,083	27.5%	61,253	-41.6%	45,692	-21.7%	19,103	87.4%
VIZCAYA	30,050	25,130	19.6%	32,497	-7.5%	27,983	7.4%	21,662	38.7%
TOTAL	1,151,819	1,023,322	12.6%	1,549,118	-25.6%	1,087,816	5.9%	887,111	29.8%

METRORAIL CUMULATIVE PERCENTAGE RIDERSHIP SHARE



TOTAL MONTHLY AND AVERAGE WEEKDAY RIDERSHIP YEAR OVER YEAR COMPARISON CHARTS – METRORAIL

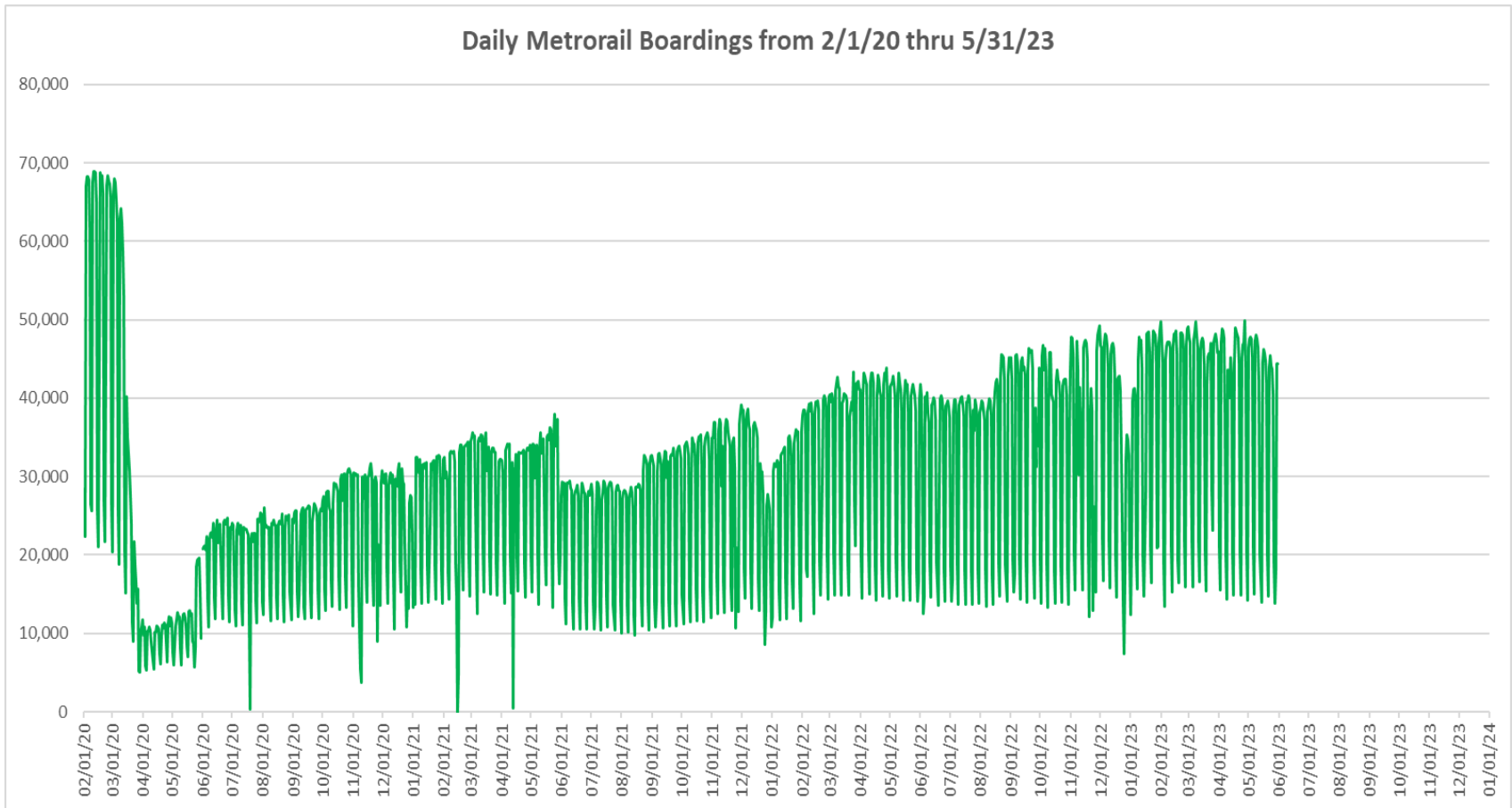


**“TOP 5 / BOTTOM 5” RAIL STATIONS AVERAGE WEEKDAY RIDERSHIP PERFORMANCE
YEAR OVER YEAR COMPARISONS**

Station	May-23	May-22	Absolute Delta (1)	Percent Delta
DADELAND SOUTH	4,537	3,715	821	22.1%
GOVERNMENT CENTER	6,505	5,709	796	13.9%
BRICKELL	5,079	4,285	794	18.5%
CIVIC CENTER	4,027	3,429	598	17.4%
DADELAND NORTH	4,013	3,436	577	16.8%
DOUGLAS ROAD	740	2,605	-1,866	-71.6%
HIALEAH	965	994	-29	-3.0%
BROWNSVILLE	671	634	37	5.8%
Dr. MARTIN LUTHER KING, JR.	839	779	60	7.7%
EARLINGTON HEIGHTS	1,285	1,160	126	10.8%

- (1) Averages rounded to the nearest boarding; construction at Douglas Road in 2023.
- (2) As a result of the SARS-CoV-2 pandemic, rides were fare-free beginning March 22, 2020; nearly all rail stations continued reporting YOY gains in May 2023, as May 2022 still showed clear reduction effects on ridership from the SARS-CoV-2 pandemic. Fares were reinstated June 1, 2021, and ridership data from the faregate system rather than the video camera counter system is utilized from that date going forward.

DAILY METRORAIL RIDERSHIP SINCE FEBRUARY 1, 2020



- (1) National Emergency was declared on 3/13/20 as a result of the SARS-CoV-2 pandemic.
- (2) There was no Metrobus, Metrorail and Metromover service on 5/31/20, as a safety precaution, and no service for any of the four modes on 9/28/22 as a result of Hurricane Ian..
- (3) The dip at the start of the second week of November 2020 is due to Hurricane Eta; these are *raw data* from the Unleash Live contractor AI video system.
- (4) The dip on 4/13/21 is due to a loss of connectivity at all stations, affecting a few stations over the next two days as well.
- (5) The reduction seen beginning 6/1/21 is partly due to the resumption of fares and partly the result of resuming reporting Cubic faregate data rather than video camera counts.
- (6) Periodic (weekly) variations are prominent, since weekday ridership is almost always significantly higher than weekend or holiday ridership.

METRORAIL PARKING PATRONAGE SUMMARY May 2023

PARK-RIDE LOT	ACTUAL CAPACITY (1)	ACTUAL OCCUPANCY (2)	PERCENT OCCUPANCY
DADELAND SOUTH	1,260	822	65%
DADELAND NORTH	1,963	803	41%
SOUTH MIAMI	1,081	209	19%
UNIVERSITY	260	177	68%
DOUGLAS ROAD	222	99	45%
COCONUT GROVE	100	56	56%
VIZCAYA	120	45	37%
CULMER	40	15	38%
SANTA CLARA	61	46	75%
ALLAPATTAH	74	9	12%
EARLINGTON HEIGHTS	361	124	34%
BROWNSVILLE	100	70	70%
DR. MARTIN LUTHER KING JR. (MDT) (*)	62	0	0%
DR. MARTIN LUTHER KING JR. (GARAGE) (*)	631	0	0%
NORTHSIDE	100	74	74%
HIALEAH	338	47	14%
OKEECHOBEE	1,398	138	10%
PALMETTO	700	146	21%
TOTAL	8,871	2,880	32%

- (1) Number of spaces could vary each week; shown are available spaces during final week of month, as submitted by DTPW Safety & Security office.
(2) All sampled occupancy data provided by DTPW Safety & Security office; calculations are revisions to those submitted by that entity.
(3) Daily averages rounded to nearest unit, with fewer counts at some stations due to shortage of DTPW Safety & Security office staff; calculations are based on sampled counted days only per raw data submitted, with resulting average daily occupancy shown.
(*) Closed throughout the month, per the DTPW Safety & Security office.

Metromover



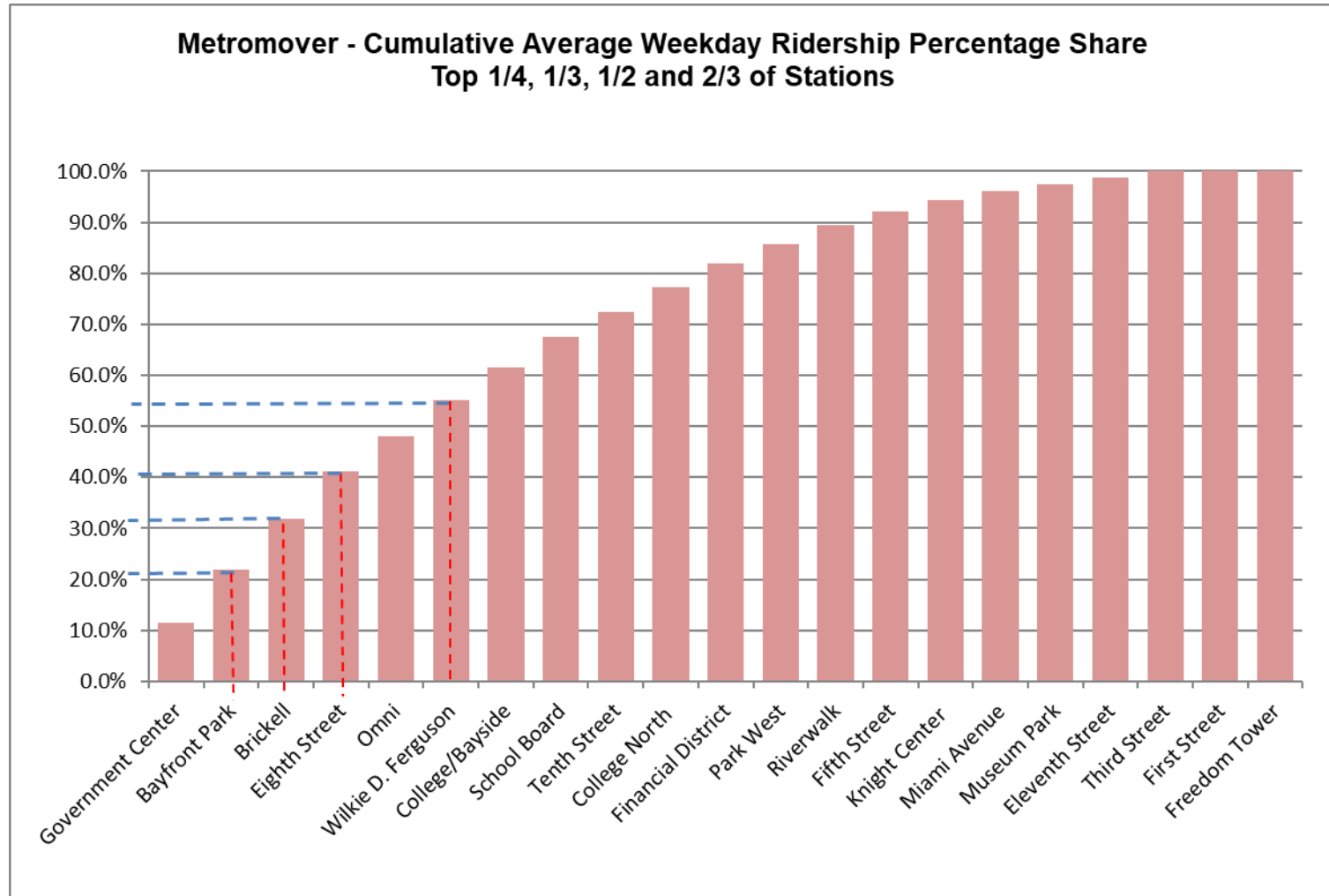
METROMOVER MONTHLY AND AVERAGE DAILY BOARDINGS BY STATION

	Average Weekday	Average Weekday	Percent Change	Average Saturday	Average Saturday	Percent Change	Average Sunday	Average Sunday	Percent Change	Total Monthly	Total Monthly	Percent Change
STATIONS	May-23	May-22	23 vs 22	May-23	May-22	23 vs 22	May-23	May-22	23 vs 22	May-23	May-22	23 vs 22
School Board	1,252	714	75.4%	761	586	30.0%	630	472	33.6%	34,392	20,190	70.3%
Omni	1,436	1,565	-8.3%	793	1,243	-36.2%	752	1,053	-28.6%	38,999	44,301	-12.0%
Museum Park	314	227	38.3%	469	328	42.8%	418	293	42.5%	10,977	7,165	53.2%
Eleventh Street	277	261	6.1%	364	213	70.8%	406	163	148.9%	9,476	7,404	28.0%
Park West	794	397	100.2%	703	251	180.0%	718	252	184.9%	24,322	9,862	146.6%
Freedom Tower (1)												
Government Center	2,368	2,136	10.9%	2,132	1,535	38.9%	1,639	1,342	22.1%	26,880	48,467	-44.5%
Miami Avenue	346	274	26.3%	234	199	17.3%	189	179	5.8%	7,484	7,470	0.2%
Third Street	239	281	-14.9%	175	221	-21.0%	187	186	0.8%	6,959	7,897	-11.9%
Knight Center	468	489	-4.4%	283	353	-19.8%	252	267	-5.7%	12,746	13,285	-4.1%
Bayfront Park	2,175	1,735	25.3%	1,541	1,329	16.0%	1,504	1,128	33.4%	61,407	48,552	26.5%
First Street (2)		729			547			535			20,059	
College/Bayside	1,357	940	44.4%	1,222	643	90.0%	1,112	744	49.5%	40,674	23,261	74.9%
College North	1,006	675	49.0%	601	399	50.7%	547	317	72.4%	27,518	17,690	55.6%
Wilkie D. Ferguson	1,432	962	48.9%	989	752	31.5%	842	808	4.1%	39,628	27,977	41.6%
Riverwalk	793	449	76.8%	490	329	48.7%	434	290	49.5%	21,694	12,557	72.8%
Fifth Street	542	367	47.5%	358	255	40.5%	335	195	72.0%	15,137	9,953	52.1%
Eighth Street	1,935	1,332	45.3%	1,709	1,150	48.6%	1,520	920	65.2%	57,163	38,048	50.2%
Tenth Street	1,017	652	56.0%	716	453	58.1%	692	369	87.5%	28,895	17,836	62.0%
Brickell	2,096	1,842	13.8%	1,322	1,380	-4.2%	1,354	1,356	-0.1%	58,411	52,248	11.8%
Financial District	944	797	18.4%	491	401	22.4%	484	389	24.5%	25,186	20,898	20.5%
TOTAL	20,792	16,825	23.6%	15,351	12,566	22.2%	14,014	11,258	24.5%	547,948	455,120	20.4%

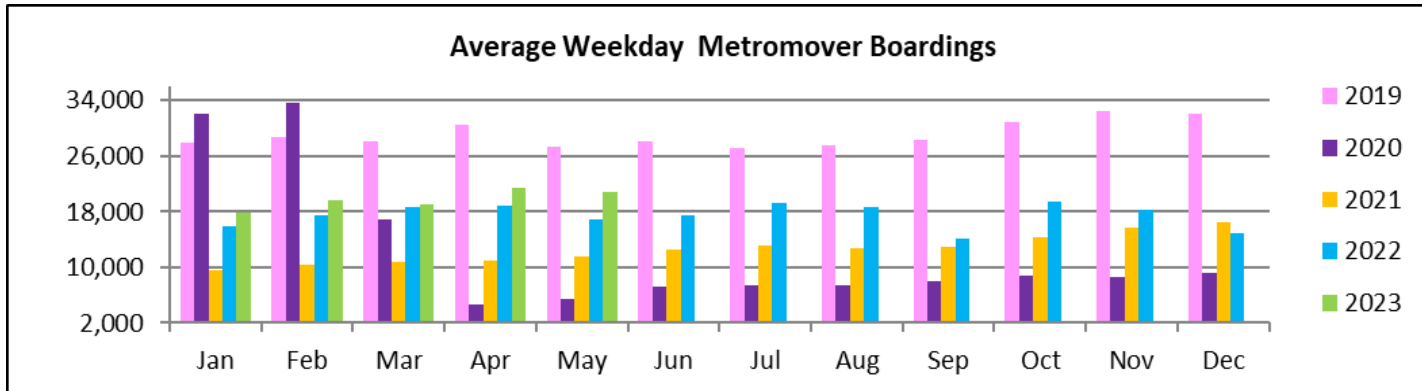
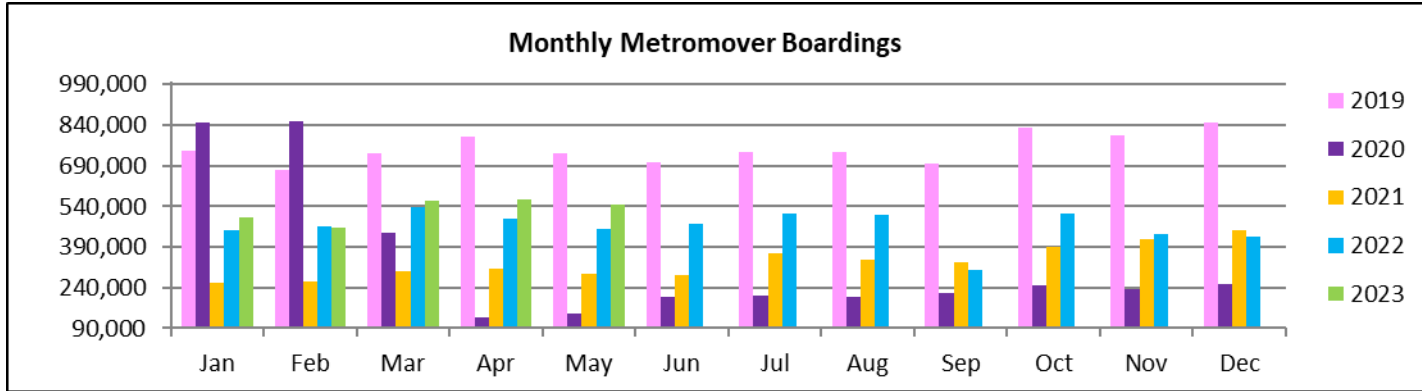
(1) Freedom Tower Station was closed for construction.

(2) First Street had no ridership data in May-23, due to the installation of a new enhanced automatic passenger counter system.

METROMOVER CUMULATIVE PERCENTAGE RIDERSHIP SHARE



TOTAL MONTHLY AND AVERAGE WEEKDAY RIDERSHIP YEAR OVER YEAR COMPARISON CHARTS – METROMOVER

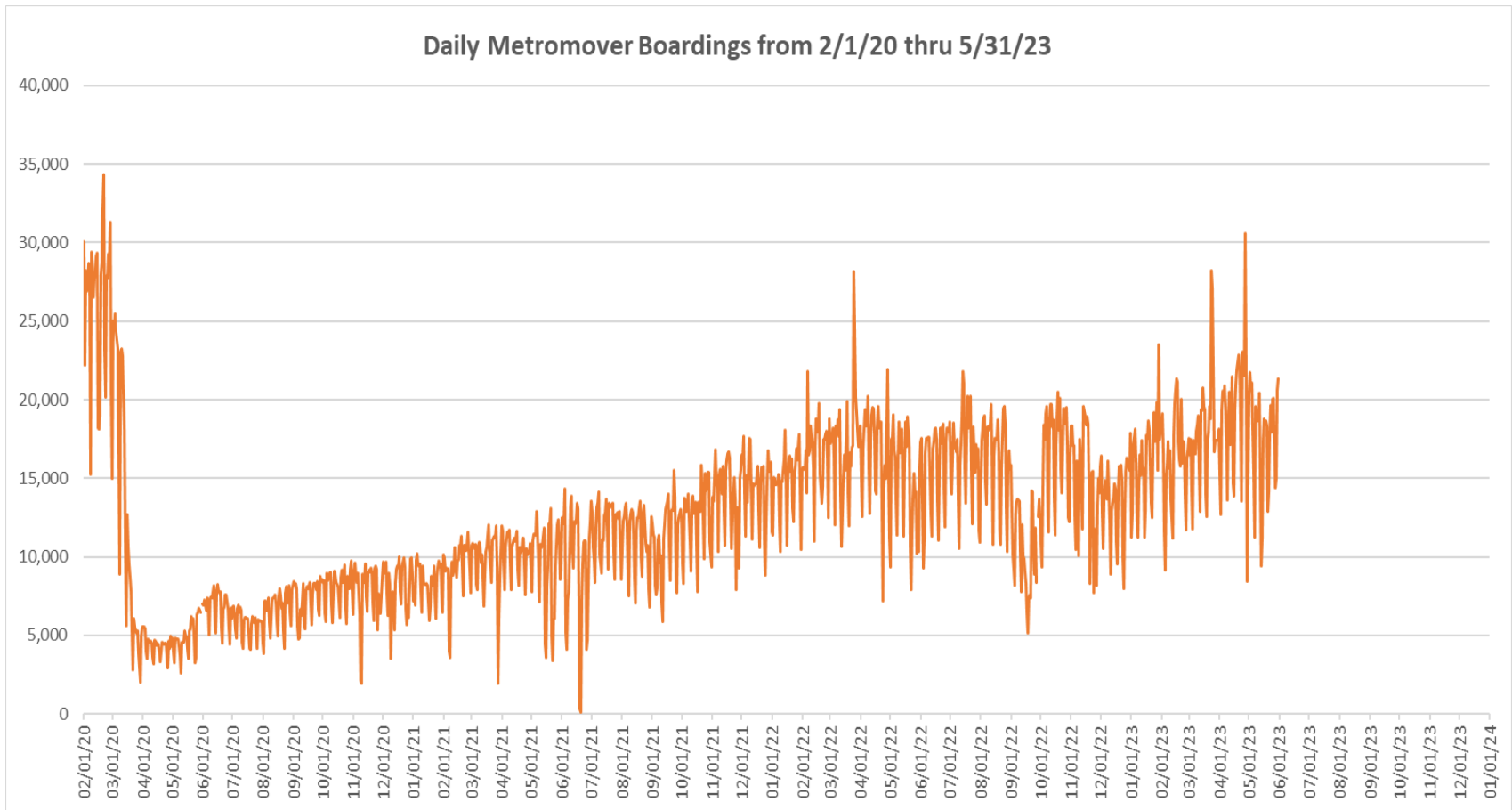


**“TOP 5 / BOTTOM 5” MOVER STATIONS AVERAGE WEEKDAY RIDERSHIP PERFORMANCE
YEAR OVER YEAR COMPARISONS**

Station	May-23	May-22	Absolute Delta (1)	Percent Delta
Eighth Street	1,935	1,332	604	45.3%
School Board	1,252	714	538	75.4%
Wilkie D. Ferguson	1,432	962	471	48.9%
Bayfront Park	2,175	1,735	440	25.3%
College/Bayside	1,357	940	417	44.4%
Omni	1,436	1,565	-130	-8.3%
Third Street	239	281	-42	-14.9%
Knight Center	468	489	-21	-4.4%
Eleventh Street	277	261	16	6.1%
Miami Avenue	346	274	72	26.3%

(1) Averages rounded to the nearest boarding.

DAILY METROMOVER RIDERSHIP SINCE FEBRUARY 1, 2020



- (1) National Emergency was declared on 3/13/20 as a result of the SARS-CoV-2 pandemic.
- (2) There was no Metrobus, Metrorail and Metromover service on 5/31/20, as a safety precaution, and no service for any of the four modes on 9/28/22 as a result of Hurricane Ian.
- (3) The dip at the start of the second week of November 2020 is due to Hurricane Eta; these are *raw data* from the UTA contractor APC system. Other more recent dips are due to various station closures (mostly on weekends) for system maintenance purposes.
- (4) Periodic (weekly) variations are prominent, since weekday ridership is almost always significantly higher than weekend or holiday ridership.

Special Transportation Services

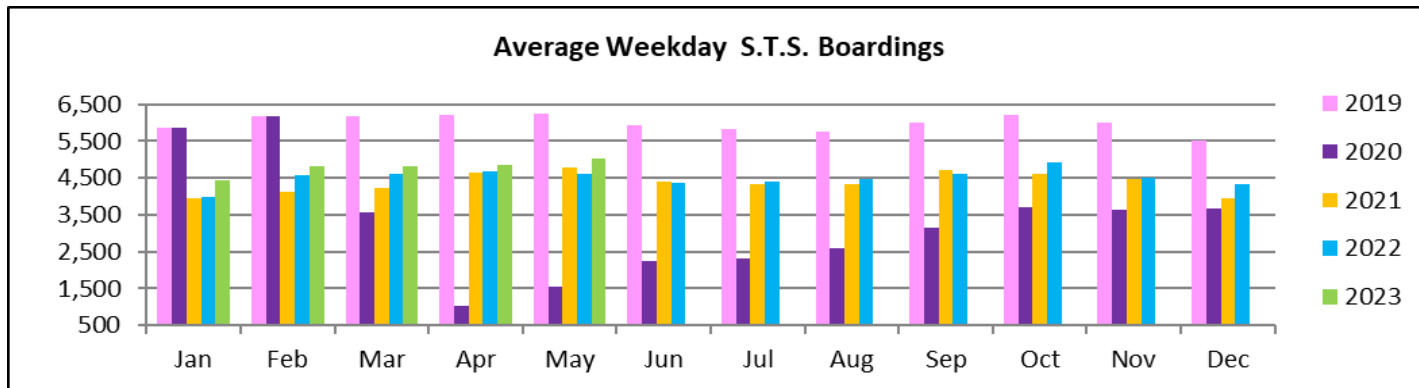
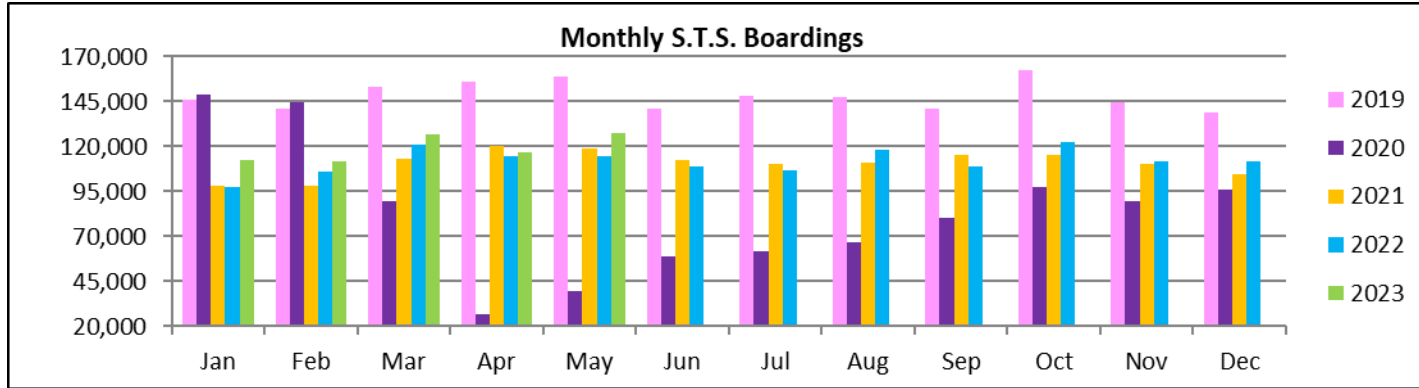


**STS MONTHLY AND AVERAGE DAILY BOARDINGS
May 2023**

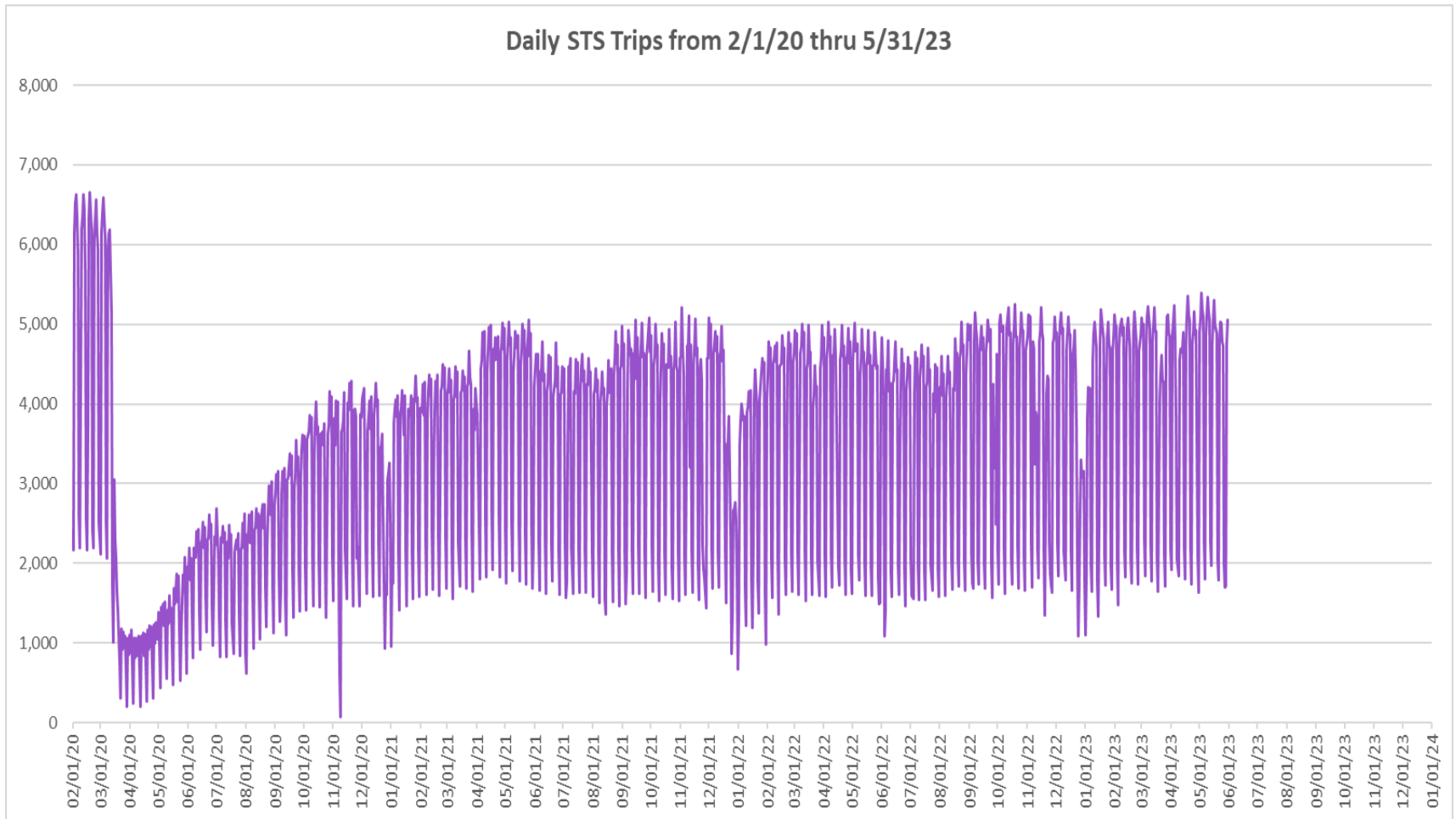
Measure	timeline	Ambulatory	Wheelchair	Total Clients (*)
Average Weekday	May-23	4,183	831	5,015
Average Saturday	May-23	1,732	396	2,127
Average Sunday	May-23	1,438	352	1,791
Total Monthly	May-23	106,154	21,628	127,782
Average Weekday	May-22	3,833	790	4,624
Average Saturday	May-22	1,603	355	1,958
Average Sunday	May-22	1,282	313	1,595
Total Monthly	May-22	94,609	19,896	114,505
Average Weekday	May-21	3,913	855	4,768
Average Saturday	May-21	1,973	467	2,440
Average Sunday	May-21	1,533	314	1,847
Total Monthly	May-21	97,329	21,307	118,636
% Change Current vs. May 2022 Weekday		9.1%	5.2%	8.4%
% Change Current vs. May 2022 Saturday		8.0%	11.5%	8.6%
% Change Current vs. May 2022 Sunday		12.2%	12.5%	12.3%
% Change Current vs. May 2022 Month Total		12.2%	8.7%	11.6%
% Change Current vs. May 2021 Weekday		6.9%	-2.7%	5.2%
% Change Current vs. May 2021 Saturday		-12.2%	-15.3%	-12.8%
% Change Current vs. May 2021 Sunday		-6.2%	12.3%	-3.0%
% Change Current vs. May 2021 Month Total		9.1%	1.5%	7.7%

(*) Trip count data provided by STS contractor.

TOTAL MONTHLY AND AVERAGE WEEKDAY RIDERSHIP YEAR OVER YEAR COMPARISON CHARTS – SPECIAL TRANSPORTATION SERVICES (S.T.S.)

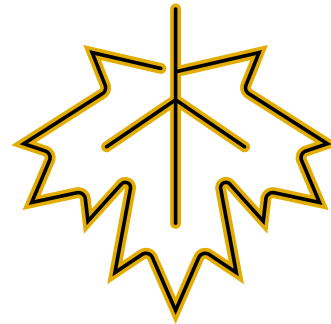
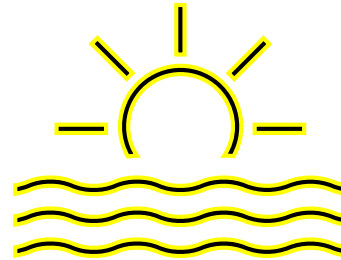
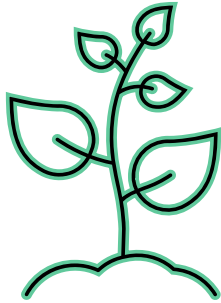


DAILY STS RIDERSHIP SINCE FEBRUARY 1, 2020

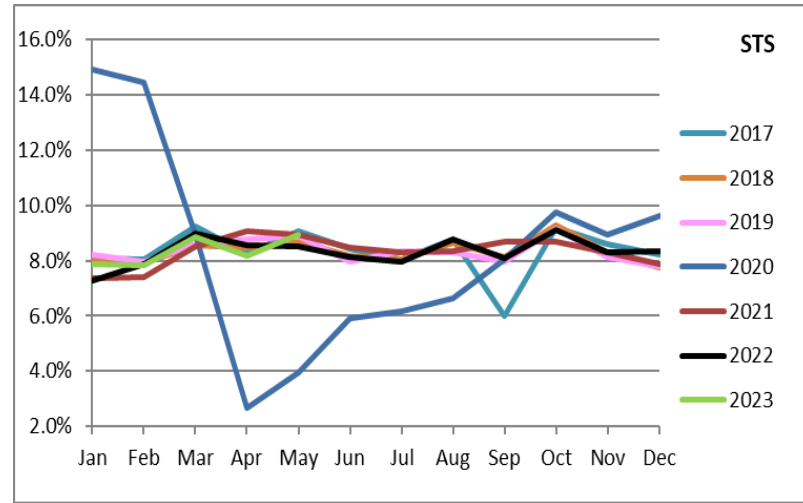
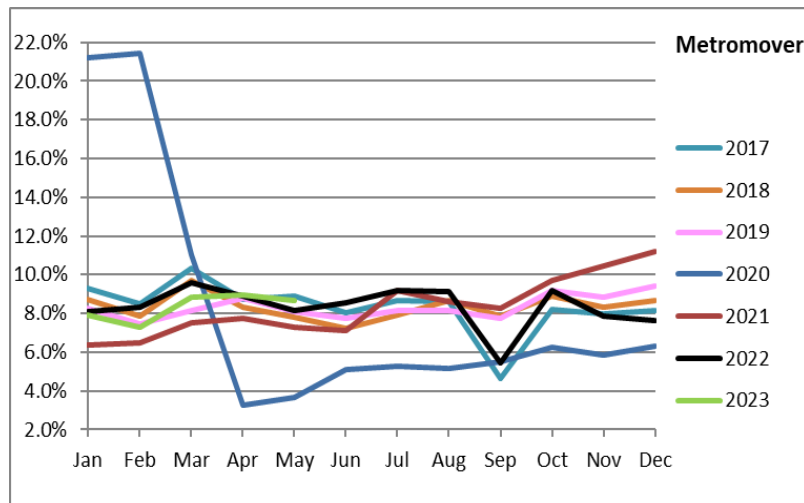
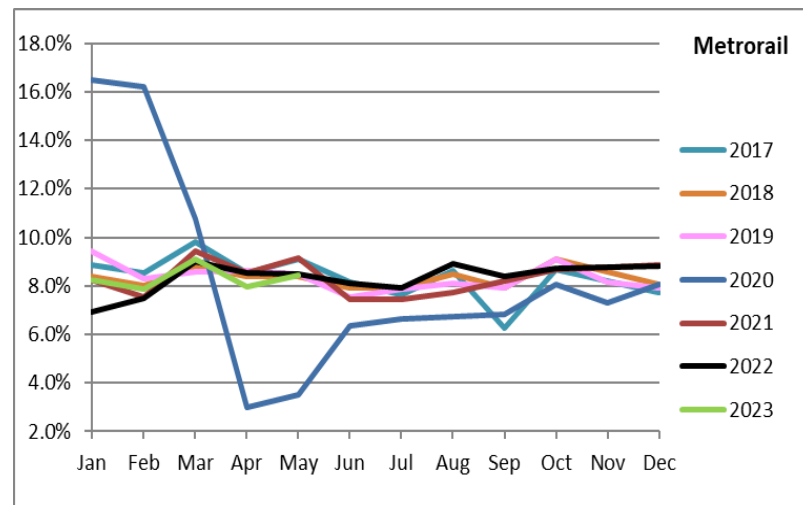
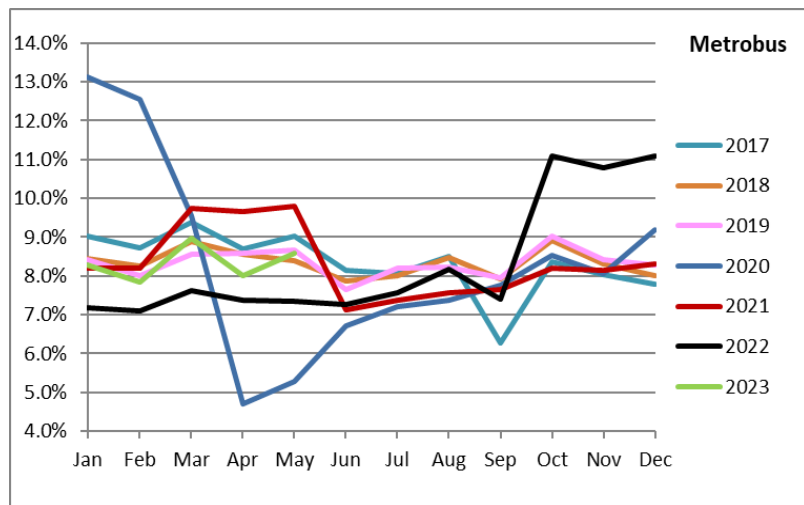


- (1) National Emergency was declared on 3/13/20 as a result of the SARS-CoV-2 pandemic.
- (2) There was no service (for any of the four modes) on 9/28/22 as a result of Hurricane Ian.
- (3) The dip at the start of the second week of November 2020 is due to Hurricane Eta.
- (4) Periodic (weekly) variations are prominent, since weekday ridership is almost always significantly higher than weekend or holiday ridership.

Ridership Seasonality



RIDERSHIP SEASONALITY – PERCENT RIDERSHIP SHARE BY MONTH AND CALENDAR YEAR FOR EACH MODE



Note: the prominent dips seen in the fall of 2017 and beginning in the spring of 2020 are due to Hurricane Irma and the SARS-CoV-2 pandemic, respectively. Reductions in Bus and Rail ridership share seen beginning in June 2021 are due to reinstatement of fares as well changes in reporting tools and datasets, as discussed earlier in this report. The prominent peaks seen beginning October 2022 are due from a changeover from farebox counts to ridership obtained from new automatic passenger counter (APC) technology on Metrobus.