



# TRANSPORTATION AND PUBLIC WORKS

## RIDERSHIP TECHNICAL REPORT

*Division of Performance and Materials Management*



# Table of Contents

<i>Table of Contents</i>	2-3
<b>All Modes Overview</b>	<b>4</b>
Total Monthly Weekday, Saturday and Sunday Monthly Boardings By Mode	5
Average Weekday, Saturday and Sunday Boardings by Mode	6
Metrobus Total Monthly Ridership Comparisons by Fiscal Year	7
Metrorail Total Monthly Ridership Comparisons by Fiscal Year	8
Metromover Total Monthly Ridership Comparisons by Fiscal Year	9
STS Total Monthly Ridership Comparisons by Fiscal Year	10
All-Modes Combined Total Monthly Ridership Comparisons By Fiscal Year	11
All Modes Combined Total Monthly and Average Weekday Ridership – Year over Year Comparison Charts	12
Average Weekday Ridership – Modal Splits	13
Daily Ridership for All Modes Combined since 2/1/20	14
<b>Metrobus</b>	<b>15</b>
Better Bus Network (BBN, 11/13/2023 Lineup) Bus Route Changes, Pt 1 and Pt 2	16-17
Metrobus Average Weekday Boardings by Route	18-20
Metrobus Average Saturday Boardings by Route	21-22
Metrobus Average Sunday Boardings by Route	23-24
Metrobus Monthly Total Boardings by Route	25-27
Year-over-Year Bus Ridership by Route Service Type	28-29
Bus Routes as Ranked by Percentage of Average Weekday Ridership	30
Metrobus Cumulative Percentage Average Weekday Ridership Share by Route (Top 75%)	31
Total Monthly and Average Weekday Bus Ridership – Year over Year Comparison Charts	32
Bus “Top 10 / Bottom 10” Bus Routes Sets Average Weekday Ridership Performance – Year-over-Year Comparisons	33
Bus “Top 10 / Bottom 10” Bus Routes Sets Average Weekday Ridership Performance – Month-over-Month Comparisons	34
Daily Metrobus Ridership since 2/1/20	35
Metrobus Parking Patronage Summary	36

## Table of Contents (continued)

<b>Metrorail</b>	<b>37</b>
Metrorail Average Weekday Boardings by Station	38
Metrorail Average Saturday Boardings by Station	39
Metrorail Average Sunday Boardings by Station	40
Metrorail Total Monthly Boardings by Station	41
Metrorail Cumulative Percentage Average Weekday Ridership Share	42
Total Monthly and Average Weekday Rail Ridership – Year over Year Comparison Charts	43
“Top 5 / Bottom 5” Stations Average Weekday Ridership Performance	44
Daily Metrorail Ridership since 2/1/20	45
Metrorail Parking Patronage Summary	46
<b>Metromover</b>	<b>47</b>
Monthly and Average Daily Mover Boardings by Station	48
Metromover Cumulative Percentage Average Weekday Ridership Share	49
Total Monthly and Average Weekday Mover Ridership – Year over Year Comparison Charts	50
“Top 5 / Bottom 5” Stations Average Weekday Ridership Performance	51
Daily Metromover Ridership since 2/1/20	52
<b>Special Transportation Services (STS)</b>	<b>53</b>
STS Monthly and Average Daily Boardings	54
Total Monthly and Average Weekday STS Ridership – Year over Year Comparison Charts	55
Daily STS Ridership since 2/1/20	56
<b>Ridership Seasonality</b>	<b>57</b>
Ridership Seasonality – Percent Ridership Share by Month and Calendar Year for Each Mode	58

# All Modes Overview



**TOTAL MONTHLY WEEKDAY, SATURDAY AND SUNDAY BOARDINGS BY MODE  
November 2023**

<b>TRAVEL MODE</b>	<b>MONTH'S TOTAL WEEKDAYS RIDERSHIP</b>	<b>MONTH'S TOTAL SATURDAYS RIDERSHIP</b>	<b>MONTH'S TOTAL SUNDAYS RIDERSHIP</b>	<b>TOTAL MONTHLY RIDERSHIP</b>	<b>% CHANGE vs Nov 2022 TOTAL MONTH RIDERSHIP</b>
<b>METROBUS (1), (2)</b>	4,139,808	514,925	480,439	5,135,172	12.9%
<b>METRORAIL (2)</b>	767,028	85,861	82,232	935,121	-11.4%
<b>METROMOVER</b>	449,532	66,989	68,366	584,887	33.2%
<b>STS PARATRANSIT (3)</b>	106,983	9,257	10,785	127,025	13.8%
<b>TOTAL</b>	<b>5,463,351</b>	<b>677,032</b>	<b>641,822</b>	<b>6,782,205</b>	<b>10.2%</b>

- (1) Bus ridership reporting through automatic passenger counters coupled with a new enhanced sensor system resumed on October 1, 2022.
- (2) Metrorail fares resumed on June 1, 2021, following a 14-month period of fare-free rides as a result of the SARS-CoV-2 pandemic. The NextFare System faregate data replaced the video data as ridership data of record starting on that date, until free fares were reinstated for the Better Bus Network launch on 11/13/23.
- (3) Paratransit ridership data as reported by the contractor and subsequently audited by the Department.

**AVERAGE WEEKDAY, SATURDAY AND SUNDAY BOARDINGS BY MODE  
November 2023**

<b>Travel Mode</b>	<b>Average Weekday</b>	<b>Average Saturday</b>	<b>Average Sunday</b>	<b>% Change Nov 2022 Weekday</b>	<b>% Change Nov 2022 Saturday</b>	<b>% Change Nov 2022 Sunday</b>
<b>METROBUS</b>	197,191	128,731	96,088	11.2%	16.0%	24.5%
<b>METRORAIL</b>	46,807	21,465	16,787	5.8%	6.6%	15.1%
<b>METROMOVER</b>	23,124	17,613	15,128	27.2%	17.9%	37.5%
<b>STS PARATRANSIT</b>	5,094	2,314	2,157	13.1%	12.0%	23.3%
<b>Totals (1)</b>	<b>272,217</b>	<b>170,124</b>	<b>130,159</b>	<b>11.5%</b>	<b>14.9%</b>	<b>24.5%</b>

(\*) Average ridership is calculated and published only for those days and stations or routes with nontrivial amounts of reported data.

## METROBUS TOTAL MONTHLY RIDERSHIP COMPARISONS BY FISCAL YEAR

<b>Bus Month</b>	<b>FY 19</b>	<b>FY 20</b>	<b>Variance 19 to 20</b>	<b>FY 21</b>	<b>FY 22</b>	<b>FY 23</b>	<b>FY 24</b>	<b>Variance 19 to 23</b>	<b>Variance 22 to 23</b>	<b>Variance 19 to 24</b>	<b>Variance 23 to 24</b>
<b>Oct</b>	4,554,886	4,507,012	-1.1%	2,805,139	3,081,157	4,679,725	4,912,151	2.7%	51.9%	7.8%	5.0%
<b>Nov</b>	4,245,535	4,197,225	-1.1%	2,651,290	3,056,726	4,549,666	5,135,172	7.2%	48.8%	21.0%	12.9%
<b>Dec</b>	4,081,581	4,126,990	1.1%	3,022,530	3,123,883	4,677,460		14.6%	49.7%		
<b>Jan</b>	4,195,911	4,316,998	2.9%	3,082,746	3,029,055	4,785,128		14.0%	58.0%		
<b>Feb</b>	3,994,019	4,123,083	3.2%	3,076,966	2,995,789	4,526,317		13.3%	51.1%		
<b>Mar</b>	4,266,768	3,136,162	-26.5%	3,660,639	3,218,562	5,183,872		21.5%	61.1%		
<b>Apr</b>	4,291,135	1,544,316	-64.0%	3,625,048	3,105,797	4,618,302		7.6%	48.7%		
<b>May</b>	4,330,922	1,734,609	-59.9%	3,683,343	3,097,574	4,953,197		14.4%	59.9%		
<b>Jun</b>	3,823,863	2,210,725	-42.2%	2,672,570	3,064,059	4,545,050		18.9%	48.3%		
<b>Jul</b>	4,094,906	2,366,749	-42.2%	2,769,907	3,189,994	4,484,458		9.5%	40.6%		
<b>Aug</b>	4,109,613	2,422,014	-41.1%	2,843,552	3,442,006	4,756,063		15.7%	38.2%		
<b>Sep</b>	3,971,220	2,546,923	-35.9%	2,877,110	3,123,572	4,525,426		14.0%	44.9%		
<b>FY Total</b>	<b>49,960,359</b>	<b>37,232,806</b>	<b>-25.5%</b>	<b>36,770,840</b>	<b>37,528,174</b>	<b>56,284,664</b>		<b>12.7%</b>	<b>50.0%</b>		

## METRORAIL TOTAL MONTHLY RIDERSHIP COMPARISONS BY FISCAL YEAR

<b>Rail Month</b>	<b>FY 19</b>	<b>FY 20</b>	<b>Variance 19 to 20</b>	<b>FY 21</b>	<b>FY 22</b>	<b>FY 23</b>	<b>FY 24</b>	<b>Variance 19 to 23</b>	<b>Variance 22 to 23</b>	<b>Variance 19 to 24</b>	<b>Variance 23 to 24</b>
<b>Oct</b>	1,757,225	1,643,166	-6.5%	769,525	844,383	1,053,191	1,237,096	-40.1%	24.7%	-29.6%	17.5%
<b>Nov</b>	1,656,929	1,469,448	-11.3%	699,492	850,881	1,055,066	935,121	-36.3%	24.0%	-43.6%	-11.4%
<b>Dec</b>	1,553,804	1,433,928	-7.7%	769,194	860,436	1,063,096		-31.6%	23.6%		
<b>Jan</b>	1,708,695	1,576,340	-7.7%	799,119	832,924	1,127,340		-34.0%	35.3%		
<b>Feb</b>	1,501,458	1,549,118	3.2%	730,792	905,162	1,072,791		-28.6%	18.5%		
<b>Mar</b>	1,554,851	1,027,319	-33.9%	917,097	1,084,978	1,239,336		-20.3%	14.2%		
<b>Apr</b>	1,559,446	287,803	-81.5%	827,414	1,027,139	1,087,816		-30.2%	5.9%		
<b>May</b>	1,531,597	337,696	-78.0%	887,111	1,023,322	1,151,819		-24.8%	12.6%		
<b>Jun</b>	1,359,966	608,758	-55.2%	723,469	975,477	1,066,861		-21.6%	9.4%		
<b>Jul</b>	1,419,158	632,964	-55.4%	722,159	953,331	1,022,937		-27.9%	7.3%		
<b>Aug</b>	1,463,646	641,275	-56.2%	749,578	1,076,490	1,174,138		-19.8%	9.1%		
<b>Sep</b>	1,427,726	654,244	-54.2%	795,749	1,012,331	1,146,864		-19.7%	13.3%		
<b>FY Total</b>	<b>18,494,501</b>	<b>11,862,059</b>	<b>-35.9%</b>	<b>9,390,699</b>	<b>11,446,854</b>	<b>13,261,255</b>		<b>-28.3%</b>	<b>15.9%</b>		



## METROMOVER TOTAL MONTHLY RIDERSHIP COMPARISONS BY FISCAL YEAR

<b>Mover Month</b>	<b>FY 19</b>	<b>FY 20</b>	<b>Variance 19 to 20</b>	<b>FY 21</b>	<b>FY 22</b>	<b>FY 23</b>	<b>FY 24</b>	<b>Variance 19 to 23</b>	<b>Variance 22 to 23</b>	<b>Variance 19 to 24</b>	<b>Variance 23 to 24</b>
<b>Oct</b>	790,533	831,234	5.1%	250,044	389,065	514,308	614,479	-34.9%	32.2%	-22.3%	19.5%
<b>Nov</b>	735,198	799,632	8.8%	232,422	418,929	439,150	584,887	-40.3%	4.8%	-20.4%	33.2%
<b>Dec</b>	767,239	849,832	10.8%	251,019	450,320	426,073		-44.5%	-5.4%		
<b>Jan</b>	746,728	847,773	13.5%	255,968	451,566	498,566		-33.2%	10.4%		
<b>Feb</b>	675,160	855,398	26.7%	260,332	465,968	459,264		-32.0%	-1.4%		
<b>Mar</b>	737,814	441,200	-40.2%	302,502	535,857	558,396		-24.3%	4.2%		
<b>Apr</b>	795,696	130,549	-83.6%	310,772	495,982	565,943		-28.9%	14.1%		
<b>May</b>	734,645	146,454	-80.1%	292,922	455,120	547,948		-25.4%	20.4%		
<b>Jun</b>	701,318	203,637	-71.0%	286,145	477,286	632,423		-9.8%	32.5%		
<b>Jul</b>	739,814	210,596	-71.5%	368,847	512,094	635,954		-14.0%	24.2%		
<b>Aug</b>	739,785	205,995	-72.2%	344,319	508,359	657,267		-11.2%	29.3%		
<b>Sep</b>	699,879	219,696	-68.6%	331,915	305,185	610,810		-12.7%	100.1%		
<b>FY Total</b>	<b>8,863,809</b>	<b>5,741,996</b>	<b>-35.2%</b>	<b>3,487,207</b>	<b>5,465,731</b>	<b>6,546,102</b>		<b>-26.1%</b>	<b>19.8%</b>		

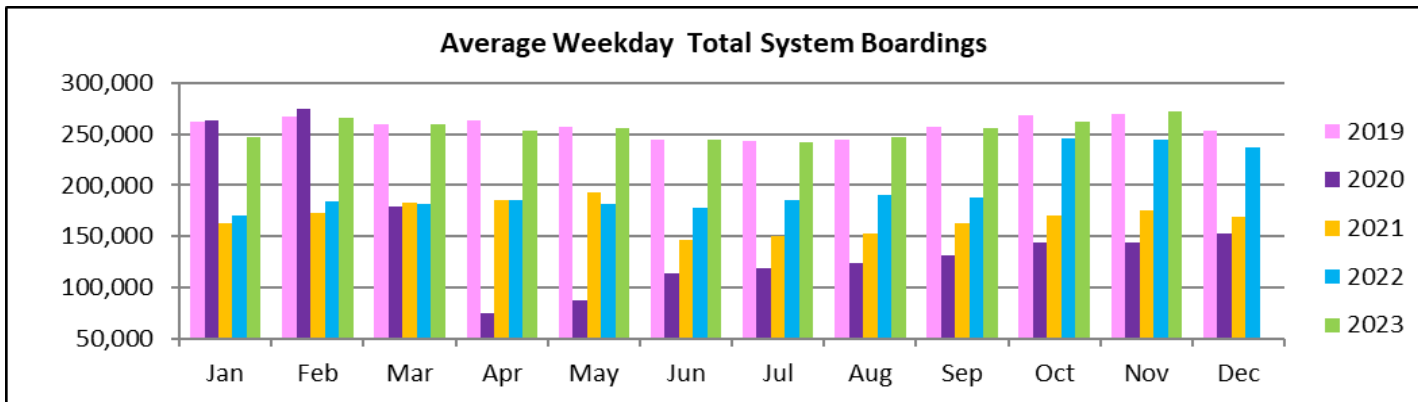
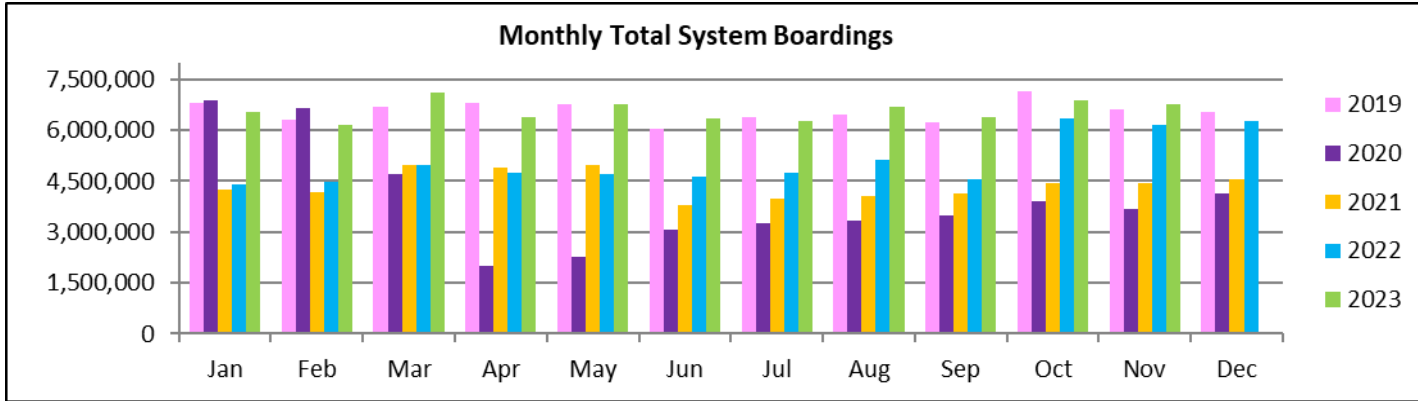
## SPECIAL TRANSPORTATION SERVICES (STS) TOTAL MONTHLY RIDERSHIP COMPARISONS BY FISCAL YEAR

<b>STS Month</b>	<b>FY 19</b>	<b>FY 20</b>	<b>Variance 19 to 20</b>	<b>FY 21</b>	<b>FY 22</b>	<b>FY 23</b>	<b>FY 24</b>	<b>Variance 19 to 23</b>	<b>Variance 22 to 23</b>	<b>Variance 19 to 24</b>	<b>Variance 23 to 24</b>
<b>Oct</b>	162,564	162,704	0.1%	97,388	115,122	122,189	130,958	-24.8%	6.1%	-19.4%	7.2%
<b>Nov</b>	145,653	144,366	-0.9%	89,387	110,289	111,578	127,025	-23.4%	1.2%	-12.8%	13.8%
<b>Dec</b>	136,110	138,642	1.9%	96,366	104,496	112,019		-17.7%	7.2%		
<b>Jan</b>	146,268	149,114	1.9%	97,928	97,541	112,632		-23.0%	15.5%		
<b>Feb</b>	141,396	144,392	2.1%	98,285	105,706	111,748		-21.0%	5.7%		
<b>Mar</b>	153,191	89,634	-41.5%	112,930	120,718	126,819		-17.2%	5.1%		
<b>Apr</b>	155,808	26,877	-82.7%	120,122	114,912	116,882		-25.0%	1.7%		
<b>May</b>	158,665	39,654	-75.0%	118,636	114,505	127,782		-19.5%	11.6%		
<b>Jun</b>	141,320	59,093	-58.2%	112,397	109,054	119,527		-15.4%	9.6%		
<b>Jul</b>	148,232	61,765	-58.3%	110,059	107,188	113,623		-23.3%	6.0%		
<b>Aug</b>	147,331	66,563	-54.8%	110,766	117,941	125,510		-14.8%	6.4%		
<b>Sep</b>	141,387	80,346	-43.2%	115,406	108,788	122,065		-13.7%	12.2%		
<b>FY Total</b>	<b>1,777,925</b>	<b>1,163,150</b>	<b>-34.6%</b>	<b>1,279,670</b>	<b>1,326,260</b>	<b>1,422,374</b>		<b>-20.0%</b>	<b>7.2%</b>		

## ALL-MODES COMBINED TOTAL MONTHLY RIDERSHIP COMPARISONS BY FISCAL YEAR

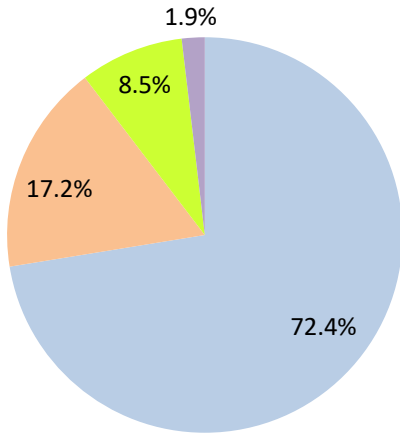
<b>All Modes</b>													
<b>Month</b>	<b>FY 19</b>	<b>FY 20</b>	<b>FY 21</b>	<b>FY 22</b>	<b>FY 23</b>	<b>FY 24</b>	<b>19 TO 20</b>	<b>20 TO 21</b>	<b>21 TO 22</b>	<b>22 TO 23</b>	<b>19 TO 23</b>	<b>23 TO 24</b>	<b>19 TO 24</b>
<b>Oct</b>	7,265,208	7,144,116	3,922,096	4,429,727	6,369,413	6,894,684	-1.7%	-45.1%	12.9%	43.8%	-12.3%	8.2%	-5.1%
<b>Nov</b>	6,783,315	6,610,671	3,672,591	4,436,825	6,155,460	6,782,205	-2.5%	-44.4%	20.8%	38.7%	-9.3%	10.2%	0.0%
<b>Dec</b>	6,538,734	6,549,392	4,139,109	4,539,135	6,278,648		0.2%	-36.8%	9.7%	38.3%	-4.0%		
<b>Jan</b>	6,797,602	6,890,225	4,235,761	4,411,086	6,523,666		1.4%	-38.5%	4.1%	47.9%	-4.0%		
<b>Feb</b>	6,312,033	6,671,991	4,166,375	4,472,625	6,170,120		5.7%	-37.6%	7.4%	38.0%	-2.2%		
<b>Mar</b>	6,712,624	4,694,315	4,993,168	4,960,115	7,108,423		-30.1%	6.4%	-0.7%	43.3%	5.9%		
<b>Apr</b>	6,802,085	1,989,545	4,883,356	4,743,830	6,388,943		-70.8%	145.5%	-2.9%	34.7%	-6.1%		
<b>May</b>	6,755,829	2,258,413	4,982,012	4,690,521	6,780,746		-66.6%	120.6%	-5.9%	44.6%	0.4%		
<b>Jun</b>	6,026,467	3,082,213	3,794,581	4,625,876	6,363,861		-48.9%	23.1%	21.9%	37.6%	5.6%		
<b>Jul</b>	6,402,110	3,272,074	3,970,972	4,762,607	6,256,972		-48.9%	21.4%	19.9%	31.4%	-2.3%		
<b>Aug</b>	6,460,375	3,335,847	4,048,215	5,144,796	6,712,978		-48.4%	21.4%	27.1%	30.5%	3.9%		
<b>Sep</b>	6,240,212	3,501,209	4,120,180	4,549,876	6,405,165		-43.9%	17.7%	10.4%	40.8%	2.6%		
<b>FY Total</b>	<b>79,096,594</b>	<b>56,000,011</b>	<b>50,928,416</b>	<b>55,767,019</b>	<b>77,514,395</b>		<b>-29.2%</b>	<b>-9.1%</b>	<b>9.5%</b>	<b>39.0%</b>	<b>-2.0%</b>		

## TOTAL MONTHLY AND AVERAGE WEEKDAY RIDERSHIP YEAR OVER YEAR COMPARISON CHARTS – ALL MODES COMBINED



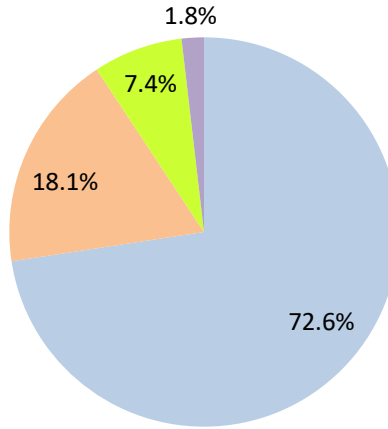
# AVERAGE WEEKDAY RIDERSHIP - MODAL SPLITS

November 2023



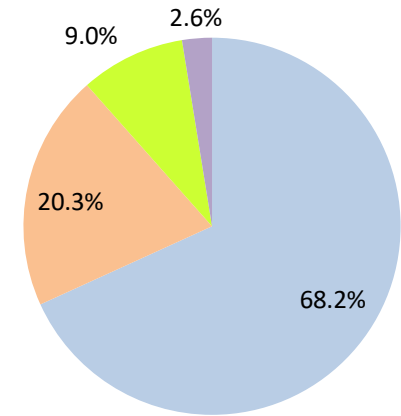
boardings

November 2022



boardings

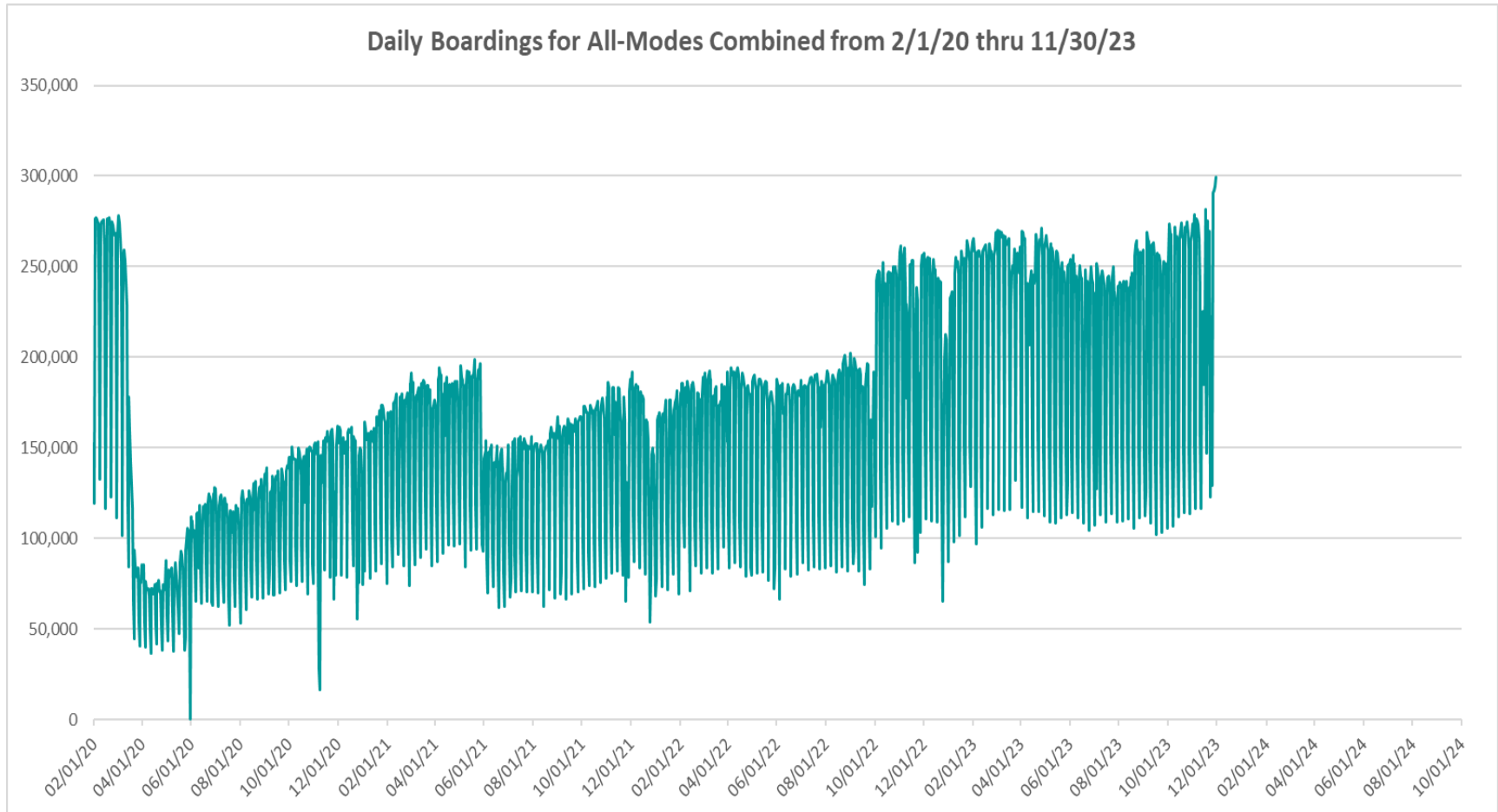
November 2021



boardings



## DAILY RIDERSHIP FOR ALL MODES COMBINED SINCE FEBRUARY 1, 2020



- (1) There was no Metrobus, Metrorail and Metromover service on 5/31/20, as a safety precaution, and no service for any of the four modes on 9/28/22 as a result of Hurricane Ian..
- (2) The dip at the start of the second week of November 2020 is due to Hurricane Eta.
- (3) The reduction seen beginning 6/1/21 is partly due to the resumption of fares for bus and rail, and partly the result of having resumed reporting Cubic farebox data rather than bus APC counts, as well as Cubic rail faregate counts instead of video camera counts on that date. The jump seen at the start of November 2022 is due to the return to APC bus ridership counts reporting begun on 10/1/22.
- (4) Periodic (weekly) variations are prominent, since weekday ridership is almost always significantly higher than weekend or holiday ridership.

# Metrobus



# Better Bus Network (BBN, 11/13/2023 lineup) Bus Route Changes (Pt 1)

The listings below and on the following page are to serve as an aid in identifying individual routes for comparison of ridership data between periods prior to and following the launch of the BBN on 11/13/2023. In November 2023, both old and new route numbers appear in data tables, since the launch took place near mid-month. Beginning with December 2023, only the current (BBN) numbering system will appear in tables, to allow for direct comparisons.

## BBN Numbering Changes:

Contracted **Route 1** was renumbered **Route 97**

Directly operated **Route 33** was renumbered **Route 103** (new, recycled number, not the same as former **Route 103 - C**)

Directly operated **Route 51** (Flagler MAX) was renumbered **Route 211** (recycled number, not the same as the OVERTOWN CIRCULATOR)

Contracted **Route 71** was renumbered **Route 107** (new, recycled number, not the same as **Route 107** further below) and became directly operated

Directly operated **Route 79** was renumbered **Route 279** (79th Steet MAX)

Directly operated **Route 93** was renumbered **Route 203** (Biscayne MAX)

Directly operated **Route 99** was renumbered **Route 199**

Contracted **Route 101** was renumbered **Route 15**

Directly operated **Route 102** was renumbered **Route 26** (under the BBN's first phase, 07/24/2023 lineup)

Directly operated **Route 107 - G** (old, not the same as the **Route 107** appearing above) was renumbered **Route 125**

Directly operated **Route 112 - L** was renumbered **Route 79** (recycled number, not the same as the **Route 79** appearing above)

Directly operated **Route 120** was renumbered **Route 100**

Directly operated **Route 200** (CUTLER BAY LOCAL) was renumbered **Route 500** (recycled number, not the same as the **Route 500** further below)

Contracted **Route 210** was renumbered **Route 510** (SKYLAKE CIRCULATOR)

Contracted **Route 246** was renumbered **Route 401** (NORTH OWL)

Contracted **Route 248** (Princeton Circulator) was renumbered **Route 70** (recycled number, not the same as former **Route 70**)

Directly operated **Route 252** became contractor-operated, under the new name **Route 152**

Directly operated **Route 500** was renumbered **Route 400** (SOUTH OWL)

*The above routes underwent modifications in various ways (realignment, new headways, days of operation, etc., some major), as part of the BBN and its resulting lineup. Details for each DTPW Bus route are provided in the Miami-Dade County website. (Directly operated Route 2 became contractor-operated but kept its number).*



# Better Bus Network (BBN, 11/13/2023 lineup) Bus Route Changes (Pt 2)

## BBN New Routes and Numbers:

Two new routes with new numbering were created to support the Better Bus Network:

Route 14 corresponds to a newly created route

Route 20 corresponds to a newly created route

## BBN Eliminated Routes:

The following routes were discontinued, as part of the Better Bus Network realignments:

Route 10

Route 16

Route 19

Route 29

Route 31 (BUSWAY LOCAL)

Route 42

Route 46 (LIBERTY CITY CONNECTION)

Route 57

Route 82 (WESTCHESTER CIRCULATOR)

Route 103 - C (old, previously used numbering, not the same as the Route 103 in the list on the previous page)

Route 211 (OVERTOWN CIRCULATOR, previously used numbering, not the same as the Route 211 in the list on the previous page)

Route 105 - E

Route 108 - H

Route 110 - J

Route 113 - M

Route 115

Route 119 - S

Route 155 (BISCAYNE GARDENS CIRCULATOR)

Route 175 (NW MIAMI-DADE EXPRESS)

Route 202 (LITTLE HAITI CONNECTION)

Route 212 (SWEETWATER CIRCULATOR)

Route 217 (BUNCHE PARK CIRCULATOR)

Route 238 (EAST-WEST CONNECTION)

Route 241 (TUTTLE LIMITED)

Route 254 (BROWNSVILLE CIRCULATOR)

Route 267 (LUDLAM LIMITED)

Route 277 (7th AVENUE MAX)

Route 286 (NORTH POINTE CIRCULATOR)

Route 297 (27th AVENUE ORANGE MAX)

*The preceding listings are not exhaustive, and the reader is referred to the Miami-Dade County website for further BBN details or additional changes.*

## METROBUS AVERAGE WEEKDAY BOARDINGS BY ROUTE (†, ††)

Route	Average Weekday	Average Weekday	Percent Change	Average Weekday	Percent Change	Average Weekday	Percent Change	Average Weekday	Percent Change
	weekdays	Nov-23	Oct-23	MOM	Nov-22	YOY	Feb-20	Current vs Feb-20	Nov-19
2	2,120	2,977	-28.8%	2,707	-21.7%	3,102	-31.7%	2,482	-14.6%
3	7,646	5,416	41.2%	5,154	48.4%	5,137	48.9%	5,000	52.9%
7	4,370	4,021	8.7%	3,750	16.5%	3,501	24.8%	3,239	34.9%
8	5,092	4,650	9.5%	4,743	7.3%	3,909	30.3%	3,714	37.1%
9	10,105	6,490	55.7%	5,894	71.4%	5,528	82.8%	5,455	85.2%
10	973	2,443	-60.2%	2,275	-57.2%	2,482	-60.8%	2,183	-55.4%
11	11,155	9,621	15.9%	8,443	32.1%	7,292	53.0%	7,066	57.9%
12	3,171	2,891	9.7%	2,680	18.3%	2,779	14.1%	2,766	14.7%
14	682								
15	289	178	62.5%	258	12.0%	177	63.1%	158	82.7%
16	754	2,009	-62.5%	1,915	-60.6%	1,862	-59.5%	1,760	-57.2%
17	5,517	4,133	33.5%	3,536	56.0%	3,878	42.3%	3,804	45.0%
19	684	1,807	-62.1%	1,480	-53.8%	1,542	-55.7%	1,533	-55.4%
20	2,576								
21	2,357	2,107	11.9%	1,803	30.7%	1,817	29.7%	1,847	27.6%
22	3,451	4,502	-23.3%	4,116	-16.1%	3,640	-5.2%	3,716	-7.1%
24-CORAL WAY LIMITED	2,635	2,195	20.0%	2,127	23.9%	1,340	96.7%	1,786	47.5%
26	2,243	1,877	19.5%	2,083	7.7%	1,778	26.1%	1,614	38.9%
27	8,649	7,110	21.7%	6,753	28.1%	6,972	24.1%	6,712	28.9%
29	191	516	-63.0%	465	-59.0%	534	-64.3%	644	-70.4%
31-BUSWAY LOCAL				1,057		1,089		1,136	
32	2,277	2,699	-15.6%	2,534	-10.2%	2,390	-4.7%	2,383	-4.5%
34 TRANSITWAY EXPRESS	1,629	1,636	-0.4%	1,340	21.6%	2,008	-18.9%	1,866	-12.7%
35	2,634	3,070	-14.2%	2,661	-1.0%	2,421	8.8%	2,574	2.3%
36	5,084	2,645	92.2%	2,881	76.5%	2,536	100.5%	2,518	101.9%
37	4,377	3,475	25.9%	3,506	24.8%	3,273	33.7%	3,318	31.9%
38 TRANSITWAY MAX	6,597	5,714	15.4%	6,326	4.3%	6,361	3.7%	6,622	-0.4%
39 TRANSITWAY EXPRESS	718	742	-3.3%			893	-19.6%	890	-19.4%
40	2,120	2,344	-9.6%	2,181	-2.8%	1,772	19.7%	1,665	27.3%
42	367	1,001	-63.3%	998	-63.2%	820	-55.2%	843	-56.5%
46 - LIBERTY CITY CONN.	8	22	-62.7%	20	-58.9%	41	-80.1%	35	-76.9%
52	1,583	1,390	13.9%	1,279	23.8%	1,261	25.5%	1,220	29.8%
54	3,204	3,086	3.8%	3,090	3.7%	2,940	9.0%	3,009	6.5%
56	505	391	29.1%	353	42.8%	354	42.7%	353	43.1%
57	187	522	-64.2%	475	-60.7%	433	-56.8%	412	-54.6%
62	2,797	2,496	12.1%	1,742	60.5%	1,815	54.1%	1,936	44.5%
70	241	161	49.4%	135	77.8%	135	79.0%	115	109.6%

(†) In this table and those which follow, "YOY" stands for "year-over-year", "MOM" for "month-over-month" and "YO4Y" for "year over four years", i.e., current month vs 12 months prior, one month prior, and 48 months prior, respectively. The February 2020 numbers serve as a pre-pandemic benchmark.

## METROBUS AVERAGE WEEKDAY BOARDINGS BY ROUTE

Route	Average Weekday	Average Weekday	Percent Change	Average Weekday	Percent Change	Average Weekday	Percent Change	Average Weekday	Percent Change
	Nov-23	Oct-23	MOM	Nov-22	YOY	Feb-20	Current vs Feb-20	Nov-19	YO4Y
<b>weekdays</b>									
72	786	670	17.3%	606	29.7%	781	0.6%	742	5.9%
73	2,109	2,868	-26.5%	2,907	-27.5%	2,124	-0.7%	2,137	-1.3%
75	2,465	1,594	54.6%	1,274	93.4%	1,429	72.5%	1,492	65.2%
77	10,823	9,959	8.7%	8,669	24.8%	7,129	51.8%	7,256	49.2%
79	8,944	8,481	5.5%	8,804	1.6%	7,636	17.1%	7,669	16.6%
82 - WESTCHESTER CIRC	24	61	-60.6%	51	-52.8%	62	-61.1%	68	-64.5%
87	2,193	1,924	14.0%	1,801	21.8%	1,499	46.3%	1,511	45.1%
88	2,311	2,419	-4.5%	2,311	0.0%	2,076	11.3%	2,043	13.1%
95-EXPRESS GOLDEN GLADES	1,149	1,195	-3.9%	1,192	-3.6%	1,690	-32.0%	1,713	-32.9%
97	197	225	-12.3%	222	-11.2%	184	7.0%	303	-35.0%
100	13,972	6,128	128.0%	7,235	93.1%	6,667	109.6%	6,826	104.7%
103 - C						463		426	
103	2,181	1,967	10.9%	1,830	19.2%	1,687	29.3%	1,733	25.9%
104	1,091	1,024	6.5%	856	27.4%	837	30.3%	885	23.3%
105 - E	532	1,402	-62.0%	1,466	-63.7%	1,287	-58.7%	1,203	-55.8%
107	1,717	825	108.1%	680	152.6%	711	141.6%	698	145.9%
108 - H	206	487	-57.6%	528	-60.9%	473	-56.3%	477	-56.8%
110 - J	1,238	2,955	-58.1%	2,942	-57.9%	2,508	-50.7%	2,643	-53.2%
113 - M	345	887	-61.1%	636	-45.7%	866	-60.1%	852	-59.5%
115	56	151	-62.8%	126	-55.3%	180	-68.8%	159	-64.7%
119 - S	3,702	9,588	-61.4%	10,044	-63.1%	8,970	-58.7%	8,978	-58.8%
125	3,356	2,099	59.9%	1,790	87.5%	1,713	95.9%	1,674	100.5%
132 -TRI-RAIL DORAL SHUTTLE	48	37	30.6%	47	0.9%	16	205.9%	6	737.1%
135	1,881	1,755	7.1%	1,354	38.9%	1,399	34.5%	1,328	41.6%
136	197	162	21.8%	133	47.9%	126	56.1%	142	39.0%
137-WEST DADE CONNECTION	2,409	2,119	13.7%	2,042	17.9%	1,626	48.2%	1,608	49.8%
150-MIAMI BEACH AIRPORT EXPRESS	2,118	2,149	-1.4%	2,214	-4.3%	1,867	13.5%	1,890	12.1%
152	667	1,051	-36.5%	925	-27.8%	851	-21.6%	850	-21.5%
155 - BISCAYNE GARDENS CIRC	20	45	-55.4%	37	-46.6%	44	-54.7%	39	-48.5%
175 - NW MIAMI-DADE EXPRESS						33		9	
183	4,584	3,653	25.5%	3,278	39.8%	3,149	45.6%	3,129	46.5%
195 EXPRESS - BROWARD BLVD						372		367	
196 EXPRESS - SHERIDAN ST						383		362	
199	2,009	1,899	5.8%	1,557	29.0%	1,473	36.4%	1,459	37.7%
202 - LITTLE HAITI CONN	43	110	-61.1%	72	-40.8%	140	-69.3%	145	-70.4%
203 - BISCAYNE MAX	2,286	3,666	-37.6%	3,365	-32.1%	3,334	-31.4%	3,446	-33.6%

## METROBUS AVERAGE WEEKDAY BOARDINGS BY ROUTE

Route	Average Weekday	Average Weekday	Percent Change	Average Weekday	Percent Change	Average Weekday	Percent Change	Average Weekday	Percent Change
	Nov-23	Oct-23	MOM	Nov-22	YOY	Feb-20	Current vs Feb-20	Nov-19	YO4Y
<b>weekdays</b>									
204 KILLIAN MAX	619	620	0.0%	1,040	-40.5%	1,071	-42.2%	970	-36.2%
207 (7th St)-LITTLE HAVANA CONN	1,904	1,819	4.7%	1,699	12.1%	1,489	27.9%	1,508	26.2%
208 (8th St)-LITTLE HAVANA CONN	1,778	1,659	7.2%	1,638	8.5%	1,308	36.0%	1,432	24.2%
211 OVERTOWN CIRCULATOR	32	71	-54.5%	98	-66.8%	58	-44.0%	68	-52.3%
211 - FLAGLER MAX	2,484	3,824	-35.0%	3,845	-35.4%	3,109	-20.1%	3,218	-22.8%
212-SWEETWATER CIRC	11	22	-50.8%	16	-32.8%	15	-25.1%	30	-63.1%
217 - BUNCHE PARK CIRC	32	80	-60.4%	58	-45.6%	97	-67.5%	85	-62.8%
238-EAST/WEST CONN	240	593	-59.5%	602	-60.1%	449	-46.6%	513	-53.2%
241 TUTTLE LIMITED	128	348	-63.0%	227	-43.5%				
254-BROWNSVILLE CIRC	2	5	-61.1%	6	-70.9%	19	-90.3%	17	-88.8%
267-LUDLAM LIMITED	59	162	-63.5%	155	-61.9%	149	-60.2%	135	-56.1%
272 SUNSET MAX	383	428	-10.5%	346	10.8%	550	-30.3%	520	-26.3%
277-7TH AVENUE MAX	397	879	-54.8%	786	-49.4%	683	-41.9%	647	-38.6%
279 - 79 STREET MAX	638	469	36.0%	473	34.9%	361	76.5%	378	68.6%
286-NORTH POINTE CIRC	32	93	-65.5%	82	-60.9%	97	-67.1%	109	-70.6%
287-SAGA BAY MAX	343	341	0.7%	299	14.7%	358	-4.1%	337	1.9%
288 KENDALL MAX	453	372	21.8%	835	-45.7%	762	-40.6%	793	-42.8%
295						233		220	
296						215		195	
297-27th AVENUE ORANGE MAX	457	1,229	-62.8%	1,322	-65.4%	1,356	-66.3%	1,325	-65.5%
301-DADE MONROE EXPRESS	1,042	955	9.1%	785	32.8%	841	23.9%	823	26.6%
302-CARD SOUND EXPRESS	103	91	14.1%	102	1.6%	86	19.9%	78	32.2%
338 - WEEKEND EXPRESS									
344	97	76	28.0%	57	69.0%	96	1.0%	104	-7.1%
400 - SOUTH OWL	75	71	5.3%	55	35.3%	81	-7.9%	36	109.0%
401 - NORTH OWL	52	61	-15.0%	59	-12.5%	94	-44.9%	99	-47.9%
500 - CUTLER BAY LOCAL	262	176	49.0%	110	138.7%	158	66.2%	141	85.4%
510 - SKYLAKE CIRCULATOR	375	471	-20.5%	328	14.3%	282	33.0%	301	24.5%
836 EXPRESS	282	247	14.4%	334	-15.4%				
837 EXPRESS	191	195	-2.0%	86	120.8%				
AHEPA SHUTTLE	18	18	0.0%	18	-1.4%	21	-14.5%	19	-4.9%
FEDERATION GARDENS SHUTTLE									
GREEN HILLS SHUTTLE	7	5	25.0%	6	13.0%	9	-27.8%	5	23.8%
KINGS CREEK SHUTTLE	8	14	-45.5%	22	-65.9%	13	-42.3%	11	-31.8%
ROBERT SHARP SHUTTLE	23	23	1.7%	19	24.5%	10	146.3%	6	290.0%
SIERRA LAKES SHUTTLE	18	16	12.9%	14	22.8%	45	-61.1%	24	-25.8%
<b>Total</b>	<b>197,191</b>	<b>185,320</b>	<b>6.4%</b>	<b>177,276</b>	<b>11.2%</b>	<b>167,711</b>	<b>17.6%</b>	<b>166,784</b>	<b>18.2%</b>

(\*) To see which routes fully or partly operated under contract this month, please refer to the ranking table in Slide 30.

(1) Includes shuttles and those routes which were not run both years.

(2) Several express routes were suspended beginning at the end of March 2020, due to the SARS-CoV-2 pandemic, while other routes had alignment and schedule modifications made to them, in an ongoing effort to optimize service delivery.

## METROBUS AVERAGE SATURDAY BOARDINGS BY ROUTE

Route	Average Saturday	Average Saturday	Percent Change	Average Saturday	Percent Change	Average Saturday	Percent Change	Average Saturday	Percent Change
	Nov-23	Oct-23	MOM	Nov-22	YOY	Feb-20	Current vs Feb-20	Nov-19	YO4Y
<b>Saturdays</b>									
2	1,381	1,605	-14.0%	1,670	-17.3%	1,616	-14.6%	1,549	-10.8%
3	6,767	5,754	17.6%	6,270	7.9%	5,229	29.4%	5,534	22.3%
7	2,481	1,972	25.8%	2,172	14.2%	1,887	31.4%	1,953	27.0%
8	2,794	2,334	19.7%	2,545	9.8%	2,027	37.8%	2,180	28.2%
9	6,079	3,677	65.3%	3,689	64.8%	3,034	100.4%	3,359	81.0%
10	948	2,107	-55.0%	2,148	-55.8%	1,896	-50.0%	1,876	-49.4%
11	8,049	5,787	39.1%	6,483	24.1%	5,182	55.3%	5,667	42.0%
14	604								
15	260	93	178.6%	73	258.3%	71	266.9%	70	271.1%
16	855	1,662	-48.6%	1,821	-53.1%	1,566	-45.4%	1,578	-45.8%
17	3,606	2,553	41.2%	2,257	59.8%	2,363	52.6%	2,613	38.0%
20	1,846								
22	2,186	2,425	-9.9%	2,485	-12.0%	2,084	4.9%	2,126	2.8%
<b>24-CORAL WAY LIMITED</b>	1,810	1,400	29.3%	1,694	6.8%	1,165	55.3%	1,289	40.4%
26	1,234	966	27.8%	1,160	6.4%	851	45.0%	813	51.7%
27	5,491	4,006	37.1%	4,347	26.3%	4,034	36.1%	4,433	23.9%
<b>31-BUSWAY LOCAL</b>				1,088		896		908	
32	1,242	1,261	-1.5%	1,253	-0.9%	1,029	20.7%	1,151	7.9%
35	1,774	1,540	15.2%	1,495	18.7%	1,372	29.3%	1,123	57.9%
36	3,271	1,677	95.1%	1,518	115.5%	1,289	153.7%	1,368	139.1%
37	2,818	2,062	36.7%	2,273	24.0%	2,090	34.8%	2,293	22.9%
<b>38 TRANSITWAY MAX</b>	6,510	6,328	2.9%	5,133	26.8%	4,715	38.1%	4,977	30.8%
40	1,041	926	12.4%	854	21.9%	655	59.0%	710	46.6%
42	290	617	-52.9%	670	-56.7%	552	-47.4%	601	-51.7%
52	959	694	38.3%	693	38.4%	686	39.9%	700	37.1%
54	2,067	1,925	7.4%	2,140	-3.4%	1,727	19.7%	1,938	6.6%
56	103								
62	2,038	1,823	11.8%	1,438	41.7%	1,343	51.7%	1,343	51.7%
70	108								
72	430	357	20.6%	384	12.1%	350	23.0%	377	14.0%
73	971	1,202	-19.2%	1,371	-29.1%	860	12.9%	1,033	-6.0%
75	1,295	550	135.4%	523	147.4%	468	176.7%	472	174.4%
77	7,044	5,510	27.9%	5,731	22.9%	4,197	67.8%	4,373	61.1%
79	7,733	7,094	9.0%	7,153	8.1%	5,667	36.5%	6,234	24.0%
<b>82 - WESTCHESTER CIRC</b>	22	38	-43.0%	38	-43.4%	50	-57.3%	61	-64.6%

## METROBUS AVERAGE SATURDAY BOARDINGS BY ROUTE

Route	Average Saturday	Average Saturday	Percent Change	Average Saturday	Percent Change	Average Saturday	Percent Change	Average Saturday	Percent Change
	Nov-23	Oct-23	MOM	Nov-22	YOY	Feb-20	Current vs Feb-20	Nov-19	YO4Y
<b>Saturdays</b>									
87	952	532	79.1%	632	50.7%	402	136.6%	541	75.8%
88	1,835	1,661	10.4%	1,895	-3.2%	1,620	13.2%	1,802	1.8%
97	191	163	16.7%	191	-0.4%	215	-11.4%	254	-25.0%
100	12,103	5,637	114.7%	5,932	104.0%	4,744	155.1%	5,200	132.8%
103 - C						315		297	
103	1,428	1,239	15.2%	1,167	22.3%	951	50.2%	1,079	32.3%
104	642	445	44.4%	444	44.6%	468	37.0%	482	33.1%
105 - E	353	772	-54.3%	813	-56.6%	619	-43.0%	667	-47.1%
107	808	238	240.1%	269	200.0%	252	220.8%	329	145.7%
108 - H	209	401	-47.9%	475	-56.0%	372	-43.9%	411	-49.3%
110 - J	907	1,394	-35.0%	2,193	-58.7%	1,952	-53.6%	1,892	-52.1%
113 - M	255	577	-55.8%	255	0.2%	503	-49.3%	458	-44.3%
115	46	80	-42.5%	69	-33.2%	82	-44.3%	96	-52.3%
119 - S	4,130	8,118	-49.1%	8,468	-51.2%	6,861	-39.8%	7,553	-45.3%
125	2,036	1,297	57.0%	1,275	59.6%	1,066	90.9%	1,136	79.3%
135	826	556	48.7%	499	65.5%	539	53.4%	552	49.7%
137-WEST DADE CONNECTION	1,627	1,337	21.7%	1,384	17.5%	1,027	58.4%	1,148	41.8%
150-MIAMI BEACH AIRPORT EXPRESS	1,933	2,161	-10.6%	2,157	-10.4%	1,604	20.5%	1,753	10.2%
152	339	375	-9.7%	408	-16.9%	302	12.1%	316	7.3%
183	2,664	1,960	35.9%	2,027	31.4%	1,790	48.8%	1,968	35.3%
199	1,257	1,106	13.6%	1,104	13.8%	849	48.1%	907	38.6%
202 - LITTLE HAITI CONN	8	22	-63.6%	26	-69.5%	50	-84.1%	64	-87.5%
207 (7th St)-LITTLE HAVANA CONN	1,044	929	12.4%	1,109	-5.8%	1,032	1.1%	1,057	-1.2%
208 (8th St)-LITTLE HAVANA CONN	1,246	1,030	21.0%	1,031	20.8%	1,044	19.3%	1,001	24.5%
241 TUTTLE LIMITED	119	222	-46.4%	244	-51.2%				
286-NORTH POINTE CIRC	34	61	-44.7%	66	-48.5%	41	-17.3%	63	-46.4%
301-DADE MONROE EXPRESS	1,000	885	13.0%	778	28.5%	801	24.8%	843	18.6%
302-CARD SOUND EXPRESS	95	94	0.8%	90	5.9%	57	67.4%	53	78.1%
338 - WEEKEND EXPRESS	145	259	-44.1%	307	-52.7%	237	-38.7%	261	-44.4%
344	24								
400 - SOUTH OWL	71	104	-31.3%	43	67.6%	70	1.8%	46	54.9%
401 - NORTH OWL	72	61	18.6%	53	36.0%	84	-15.0%	93	-23.2%
500 - CUTLER BAY LOCAL	241	152	58.6%	127	89.9%	119	102.0%	122	98.0%
510 - SKYLAKE CIRCULATOR	179	217	-17.5%	92	95.4%	165	8.6%	167	7.2%
12/21 WEEKEND INTERLINE	3,792	3,290	15.3%	2,727	39.1%	2,528	50.0%	2,719	39.4%
FEDERATION GARDENS SHUTTLE	24	20	18.8%	21	14.5%	28	-16.4%	18	29.1%
<b>Total</b>	<b>128,731</b>	<b>107,331</b>	<b>19.9%</b>	<b>110,932</b>	<b>16.0%</b>	<b>93,742</b>	<b>37.3%</b>	<b>100,051</b>	<b>28.7%</b>

## METROBUS AVERAGE SUNDAY BOARDINGS BY ROUTE

Route	Average Sunday	Average Sunday	Percent Change	Average Sunday	Percent Change	Average Sunday	Percent Change	Average Sunday	Percent Change
Sundays	Nov-23	Oct-23	MOM	Nov-22	YOY	Feb-20	Current vs Feb-20	Nov-19	YO4Y
2	991	1,214	-18.3%	963	2.9%	1,335	-25.7%	1,024	-3.1%
3	5,317	4,408	20.6%	4,316	23.2%	4,353	22.2%	4,174	27.4%
7	1,901	1,632	16.4%	1,467	29.5%	1,654	14.9%	1,453	30.9%
8	2,072	1,838	12.7%	1,817	14.0%	1,746	18.6%	1,692	22.4%
9	4,342	2,756	57.5%	2,531	71.6%	2,549	70.3%	2,433	78.4%
10	660	1,632	-59.5%	1,352	-51.2%	1,441	-54.2%	1,232	-46.4%
11	5,353	3,803	40.7%	4,013	33.4%	3,917	36.7%	3,730	43.5%
14	723								
15	243	53	359.2%	52	368.1%	56	338.6%	49	398.8%
16	397	1,023	-61.1%	1,009	-60.6%	997	-60.1%	838	-52.6%
17	2,707	1,920	41.0%	1,585	70.8%	1,833	47.7%	1,678	61.3%
20	1,492								
22	1,571	1,915	-17.9%	1,712	-8.2%	1,548	1.5%	1,540	2.1%
24-CORAL WAY LIMITED	1,369	1,108	23.6%	1,045	31.1%	905	51.4%	950	44.1%
26	1,031	871	18.4%	863	19.5%	717	43.9%	745	38.4%
27	3,730	3,146	18.6%	2,837	31.5%	2,918	27.8%	2,937	27.0%
31-BUSWAY LOCAL				671		715		607	
32	972	768	26.6%	784	24.0%	772	25.9%	764	27.2%
35	1,259	1,175	7.2%	1,022	23.2%	942	33.8%	942	33.7%
36	2,806	1,160	141.8%	1,064	163.7%	1,111	152.7%	1,030	172.5%
37	2,246	1,755	28.0%	1,650	36.2%	1,739	29.2%	1,673	34.3%
38 TRANSITWAY MAX	5,940	4,957	19.8%	4,029	47.4%	4,147	43.2%	3,935	50.9%
40	711	542	31.1%	487	46.1%	447	58.9%	487	45.8%
42	226	425	-46.9%	409	-44.8%	416	-45.8%	345	-34.5%
52	781	496	57.3%	438	78.1%	466	67.5%	441	77.3%
54	1,333	1,181	12.9%	1,203	10.8%	1,171	13.9%	1,139	17.1%
62	1,284	1,040	23.5%	805	59.6%	891	44.2%	868	47.9%
70	83								
72	320	259	23.3%	290	10.4%	265	20.8%	282	13.3%
73	468	602	-22.4%	559	-16.4%	495	-5.5%	480	-2.7%
75	1,019	352	189.7%	274	271.2%	271	276.2%	248	310.7%
77	4,786	3,980	20.3%	3,689	29.8%	2,815	70.0%	2,886	65.9%
79	5,757	4,837	19.0%	5,012	14.9%	4,804	19.8%	4,548	26.6%

## METROBUS AVERAGE SUNDAY BOARDINGS BY ROUTE

Route	Average Sunday	Average Sunday	Percent Change	Average Sunday	Percent Change	Average Sunday	Percent Change	Average Sunday	Percent Change
	Nov-23	Oct-23	MOM	Nov-22	YOY	Feb-20	Current vs Feb-20	Nov-19	YO4Y
<b>Sundays</b>									
87	447	362	23.4%	355	25.7%	319	40.0%	287	55.6%
88	1,271	1,255	1.3%	1,164	9.2%	1,286	-1.1%	1,223	3.9%
97	153	149	3.1%	145	5.8%	201	-23.6%	199	-22.8%
100	9,261	3,492	165.2%	3,574	159.1%	3,469	167.0%	3,465	167.3%
103 - C						212		199	
103	837	729	14.9%	629	33.1%	607	38.0%	620	35.1%
104	484	348	39.1%	321	50.7%	317	52.6%	297	62.9%
105 - E	298	634	-53.1%	699	-57.4%	616	-51.7%	567	-47.5%
107	726	187	288.3%	96	659.6%	162	348.3%	157	363.1%
108 - H	143	363	-60.7%	421	-66.1%	328	-56.6%	334	-57.3%
110 - J	725	1,699	-57.3%	1,651	-56.1%	1,638	-55.8%	1,513	-52.1%
113 - M	131	444	-70.5%	482	-72.8%	431	-69.5%	358	-63.3%
115	27	66	-58.7%	49	-44.0%	80	-66.0%	88	-69.0%
119 - S	3,274	7,612	-57.0%	7,900	-58.6%	7,141	-54.1%	7,080	-53.8%
125	1,451	1,036	40.1%	915	58.6%	895	62.1%	819	77.2%
135	670	474	41.5%	357	87.9%	349	92.0%	363	84.6%
137-WEST DADE CONNECTION	1,150	956	20.3%	997	15.3%	879	30.8%	800	43.7%
150-MIAMI BEACH AIRPORT EXPRESS	1,982	1,966	0.8%	1,980	0.1%	1,574	25.9%	1,593	24.4%
152	225	331	-32.2%	296	-24.2%	199	13.1%	247	-9.1%
183	1,960	1,569	24.9%	1,353	44.9%	1,413	38.8%	1,293	51.6%
199	922	887	4.0%	689	33.8%	658	40.2%	626	47.4%
202 - LITTLE HAITI CONN	8	21	-61.3%	22	-62.4%	39	-79.0%	70	-88.3%
207 (7th St)-LITTLE HAVANA CONN	629	648	-2.9%	660	-4.7%	796	-21.0%	726	-13.3%
208 (8th St)-LITTLE HAVANA CONN	888	862	3.0%	798	11.3%	911	-2.6%	969	-8.4%
241 TUTTLE LIMITED	74	187	-60.4%	192	-61.4%				
301-DADE MONROE EXPRESS	1,066	867	23.0%	713	49.4%	751	41.9%	755	41.2%
302-CARD SOUND EXPRESS	82	72	14.0%	78	4.3%	57	43.2%	70	16.9%
338 - WEEKEND EXPRESS	123	247	-50.3%	281	-56.3%	252	-51.2%	274	-55.1%
400 - SOUTH OWL	74	70	6.0%	52	43.8%	83	-10.3%	45	65.6%
401 - NORTH OWL	50	65	-23.2%	56	-11.1%	87	-43.0%	93	-46.9%
500 - CUTLER BAY LOCAL	55	86	-36.0%	75	-26.0%	59	-5.6%	42	31.4%
510 - SKYLAKE CIRCULATOR	181	194	-6.9%	82	121.6%	143	26.4%	138	31.4%
12/21 WEEKEND INTERLINE	2,831	2,700	4.8%	2,179	29.9%	2,048	38.3%	2,027	39.7%
<b>Total</b>	<b>96,088</b>	<b>81,427</b>	<b>18.0%</b>	<b>77,210</b>	<b>24.5%</b>	<b>75,428</b>	<b>27.4%</b>	<b>72,484</b>	<b>32.6%</b>



## METROBUS TOTAL MONTHLY BOARDINGS BY ROUTE

Route	Total Month	Total Month	Percent Change	Total Month	Percent Change	Total Month	Percent Change	Total Month	Percent Change
	<b>total month</b> Nov-23	Oct-23	MOM	Nov-22	YOY	Feb-20	Current vs Feb-20	Nov-19	YO4Y
2	55,002	77,976	-29.5%	68,335	-19.5%	75,463	-27.1%	62,506	-12.0%
3	214,225	164,203	30.5%	154,891	38.3%	146,294	46.4%	148,547	44.2%
7	111,189	104,507	6.4%	94,775	17.3%	86,077	29.2%	81,808	35.9%
8	128,457	120,821	6.3%	118,870	8.1%	95,295	34.8%	93,650	37.2%
9	258,220	171,265	50.8%	151,178	70.8%	135,924	90.0%	138,066	87.0%
10	27,532	70,338	-60.9%	63,131	-56.4%	64,874	-57.6%	59,198	-53.5%
11	293,222	253,837	15.5%	223,309	31.3%	187,425	56.4%	188,314	55.7%
12	66,597	63,603	4.7%	56,275	18.3%	55,585	19.8%	55,318	20.4%
14	20,355								
15	8,316	4,545	83.0%	5,959	39.6%	4,114	102.1%	3,753	121.6%
16	21,239	55,959	-62.0%	52,533	-59.6%	49,061	-56.7%	47,282	-55.1%
17	143,814	110,727	29.9%	91,203	57.7%	96,715	48.7%	97,525	47.5%
19	14,364	39,745	-63.9%	31,070	-53.8%	30,847	-53.4%	30,660	-53.2%
20	68,947								
21	49,494	46,355	6.8%	37,863	30.7%	36,341	36.2%	36,937	34.0%
22	89,079	118,329	-24.7%	104,929	-15.1%	89,404	-0.4%	92,639	-3.8%
24-CORAL WAY LIMITED	69,420	59,432	16.8%	56,666	22.5%	36,237	91.6%	46,915	48.0%
26	57,191	49,521	15.5%	52,695	8.5%	42,683	34.0%	40,079	42.7%
27	222,250	188,160	18.1%	173,385	28.2%	171,282	29.8%	171,096	29.9%
29	4,003	11,342	-64.7%	9,775	-59.0%	10,684	-62.5%	12,870	-68.9%
31-BUSWAY LOCAL				29,912		29,125		30,304	
32	57,636	68,263	-15.6%	62,150	-7.3%	56,027	2.9%	57,236	0.7%
34 TRANSITWAY EXPRESS	34,216	36,002	-5.0%	28,134	21.6%	40,159	-14.8%	37,324	-8.3%
35	68,700	79,573	-13.7%	66,963	2.6%	59,041	16.4%	61,808	11.2%
36	133,885	70,698	89.4%	71,898	86.2%	61,606	117.3%	62,344	114.8%
37	114,412	93,471	22.4%	90,962	25.8%	82,870	38.1%	86,189	32.7%
38 TRANSITWAY MAX	194,265	175,803	10.5%	173,520	12.0%	167,379	16.1%	176,989	9.8%
39 TRANSITWAY EXPRESS	15,069	16,333	-7.7%			17,853	-15.6%	17,801	-15.3%
40	52,235	57,992	-9.9%	51,652	1.1%	40,497	29.0%	39,285	33.0%
42	10,000	26,611	-62.4%	25,676	-61.1%	20,825	-52.0%	21,597	-53.7%
46 - LIBERTY CITY CONN.	170	477	-64.4%	414	-58.9%	814	-79.1%	700	-75.7%
52	40,994	35,844	14.4%	31,827	28.8%	30,522	34.3%	30,091	36.2%
54	82,219	81,490	0.9%	79,457	3.5%	72,125	14.0%	75,573	8.8%
56	11,008	8,598	28.0%	7,421	48.3%	7,071	55.7%	7,053	56.1%
57	3,927	11,491	-65.8%	9,980	-60.7%	8,665	-54.7%	8,239	-52.3%
62	73,318	67,398	8.8%	46,368	58.1%	46,582	57.4%	49,768	47.3%
70	5,900	3,546	66.4%	2,845	107.4%	2,690	119.3%	2,298	156.7%

## METROBUS TOTAL MONTHLY BOARDINGS BY ROUTE

Route	Total Month	Total Month	Percent Change	Total Month	Percent Change	Total Month	Percent Change	Total Month	Percent Change
	Nov-23	Oct-23	MOM	Nov-22	YOY	Feb-20	Current vs Feb-20	Nov-19	YO4Y
<b>total month</b>									
72	19,821	17,459	13.5%	15,711	26.2%	18,433	7.5%	18,136	9.3%
73	50,502	70,903	-28.8%	69,328	-27.2%	48,767	3.6%	50,303	0.4%
75	62,030	39,021	59.0%	30,229	105.2%	31,994	93.9%	33,431	85.5%
77	279,394	261,039	7.0%	223,427	25.0%	174,833	59.8%	181,409	54.0%
79	247,534	239,146	3.5%	238,556	3.8%	200,268	23.6%	207,288	19.4%
<b>82 - WESTCHESTER CIRC</b>	589	1,488	-60.4%	1,218	-51.6%	1,482	-60.3%	1,655	-64.4%
87	52,099	46,254	12.6%	42,118	23.7%	33,273	56.6%	34,368	51.6%
88	62,229	66,138	-5.9%	61,936	0.5%	54,772	13.6%	55,978	11.2%
<b>95-EXPRESS GOLDEN GLADES</b>	24,131	26,295	-8.2%	25,037	-3.6%	33,796	-28.6%	34,266	-29.6%
97	5,664	6,337	-10.6%	6,144	-7.8%	5,558	1.9%	8,321	-31.9%
100	388,128	174,819	122.0%	193,531	100.6%	170,942	127.1%	179,834	115.8%
<b>103 - C</b>						11,682		10,991	
103	55,702	51,871	7.4%	46,244	20.5%	40,918	36.1%	43,150	29.1%
104	27,897	26,049	7.1%	21,357	30.6%	20,351	37.1%	21,587	29.2%
<b>105 - E</b>						31,302		30,235	
107	42,919	20,040	114.2%	15,830	171.1%	16,118	166.3%	16,393	161.8%
<b>108 - H</b>						12,624		13,272	
110	5,882	14,133	-58.4%	15,096	-61.0%	12,624	-53.4%	13,272	-55.7%
<b>110 - J</b>						66,481		69,886	
113	33,241	79,080	-58.0%	78,812	-57.8%	66,481	-50.0%	69,886	-52.4%
<b>113 - M</b>						21,548		21,112	
115	8,926	24,040	-62.9%	16,780	-46.8%	21,548	-58.6%	21,112	-57.7%
119	1,498	3,968	-62.2%	3,157	-52.5%	4,334	-65.4%	4,102	-63.5%
<b>119 - S</b>						242,257		252,731	
125	110,641	281,456	-60.7%	284,305	-61.1%	43,178	-54.3%	43,252	-56.2%
<b>132 -TRI-RAIL DORAL SHUTTLE</b>						993		114	
135	85,868	56,547	51.9%	47,255	81.7%	312	221.2%	114	778.9%
136	1,002	804	24.6%	993	0.9%	312	221.2%	114	778.9%
<b>137-WEST DADE CONNECTION</b>						32,067		31,143	
150	46,155	43,211	6.8%	32,211	43.3%	32,067	43.9%	31,143	48.2%
<b>150-MIAMI BEACH AIRPORT EXPRESS</b>						2,524		2,835	
152	4,137	3,557	16.3%	2,798	47.9%	2,524	63.9%	2,835	45.9%
<b>155 - BISCAYNE GARDENS CIRC</b>						41,167		41,900	
175	62,841	56,750	10.7%	53,413	17.7%	41,167	52.6%	41,900	50.0%
<b>175 - NW MIAMI-DADE EXPRESS</b>						51,651		54,524	
183	62,124	65,763	-5.5%	65,015	-4.4%	51,651	20.3%	54,524	13.9%
<b>195 EXPRESS - BROWARD BLVD</b>						19,325		19,814	
196	16,494	26,285	-37.2%	22,530	-26.8%	19,325	-14.6%	19,814	-16.8%
<b>196 EXPRESS - SHERIDAN ST</b>						881		775	
199	419	985	-57.5%	785	-46.6%	881	-52.4%	775	-45.9%
<b>202 - LITTLE HAITI CONN</b>						661		80	
203	116,711	96,050	21.5%	83,706	39.4%	661	50.5%	80	47.9%
<b>203 - BISCAYNE MAX</b>						7,441		7,339	
195	51,820	50,634	2.3%	40,559	27.8%	7,441	42.7%	7,339	40.7%
<b>195 EXPRESS - BROWARD BLVD</b>						7,658		7,235	
196	973	2,620	-62.9%	1,733	-43.9%	7,658	-69.6%	7,235	-72.8%
<b>196 EXPRESS - SHERIDAN ST</b>						3,200		3,571	
199	48,014	80,650	-40.5%	70,672	-32.1%	3,200	-28.0%	3,571	-30.3%

## METROBUS TOTAL MONTHLY BOARDINGS BY ROUTE

Route	Total Month	Total Month	Percent Change	Total Month	Percent Change	Total Month	Percent Change	Total Month	Percent Change
<b>total month</b>	<b>Nov-23</b>	<b>Oct-23</b>	<b>MOM</b>	<b>Nov-22</b>	<b>YOY</b>	<b>Feb-20</b>	<b>Current vs Feb-20</b>	<b>Nov-19</b>	<b>YO4Y</b>
204 KILLIAN MAX	13,006	13,632	-4.6%	21,848	-40.5%	21,418	-39.3%	19,404	-33.0%
207 (7th St)-LITTLE HAVANA CONN	47,311	46,970	0.7%	43,414	9.0%	38,127	24.1%	39,082	21.1%
208 (8th St)-LITTLE HAVANA CONN	46,758	44,922	4.1%	42,519	10.0%	35,018	33.5%	38,482	21.5%
211 OVERTOWN CIRCULATOR	681	1,567	-56.5%	2,050	-66.8%	1,159	-41.2%	1,360	-49.9%
211 - FLAGLER MAX	52,162	84,135	-38.0%	80,739	-35.4%	62,186	-16.1%	64,366	-19.0%
212-SWEETWATER CIRC	232	494	-53.0%	345	-32.8%	295	-21.4%	598	-61.2%
217 - BUNCHE PARK CIRC	665	1,759	-62.2%	1,223	-45.6%	1,949	-65.9%	1,701	-60.9%
238-EAST/WEST CONN	5,043	13,036	-61.3%	12,640	-60.1%	8,987	-43.9%	10,261	-50.9%
241 TUTTLE LIMITED	3,544	9,471	-62.6%	6,711	-47.2%				
254-BROWNSVILLE CIRC	39	105	-62.9%	134	-70.9%	384	-89.8%	332	-88.3%
267-LUDLAM LIMITED	1,243	3,567	-65.2%	3,263	-61.9%	2,978	-58.3%	2,696	-53.9%
272 SUNSET MAX (*)	8,051	9,423	-14.6%	7,263	10.8%	11,004	-26.8%	10,397	-22.6%
277-7TH AVENUE MAX	8,343	19,345	-56.9%	16,501	-49.4%	13,669	-39.0%	12,937	-35.5%
279 - 79 STREET MAX	13,393	10,318	29.8%	9,929	34.9%	7,228	85.3%	7,567	77.0%
286-NORTH POINTE CIRC	806	2,279	-64.6%	1,977	-59.2%	2,145	-62.4%	2,490	-67.6%
287-SAGA BAY MAX	7,209	7,499	-3.9%	6,283	14.7%	7,160	0.7%	6,736	7.0%
288 KENDALL MAX	9,517	8,189	16.2%	17,542	-45.7%	15,249	-37.6%	15,855	-40.0%
295						4,668		4,395	
296						4,297		3,899	
297-27th AVENUE ORANGE MAX	9,598	27,047	-64.5%	27,766	-65.4%	27,125	-64.6%	26,500	-63.8%
301-DADE MONROE EXPRESS	31,216	28,889	8.1%	23,156	34.8%	23,838	31.0%	24,452	27.7%
302-CARD SOUND EXPRESS	2,959	2,728	8.5%	2,886	2.5%	2,236	32.3%	2,180	35.7%
338 - WEEKEND EXPRESS	1,195	2,274	-47.4%	2,633	-54.6%	2,191	-45.5%	2,674	-55.3%
344	2,133	1,666	28.0%	1,205	77.0%	1,919	11.2%	2,087	2.2%
400 - SOUTH OWL	2,223	2,324	-4.3%	1,586	40.2%	2,301	-3.4%	1,168	90.3%
401 - NORTH OWL	1,617	1,899	-14.8%	1,727	-6.4%	2,641	-38.8%	2,912	-44.5%
500 - CUTLER BAY LOCAL	6,743	4,907	37.4%	3,186	111.6%	3,984	69.3%	3,645	85.0%
510 - SKYLAKE CIRCULATOR	9,492	12,211	-22.3%	7,664	23.9%	7,033	35.0%	7,543	25.8%
836 EXPRESS	5,927	5,428	9.2%	7,005	-15.4%				
837 EXPRESS	4,003	4,281	-6.5%	259	1445.6%				
12/21 WEEKEND INTERLINE	29,323	26,661	10.0%	21,804	34.5%	20,830	40.8%	23,731	23.6%
AHEPA SHUTTLE	71	71	0.0%	54	31.5%	83	-14.5%	56	26.8%
FEDERATION GARDENS SHUTTLE	95	80	18.8%	83	14.5%	142	-33.1%	92	3.3%
GREEN HILLS SHUTTLE	26	26	0.0%	23	13.0%	36	-27.8%	21	23.8%
KINGS CREEK SHUTTLE	30	55	-45.5%	66	-54.5%	52	-42.3%	33	-9.1%
ROBERT SHARP SHUTTLE	117	92	27.2%	94	24.5%	38	207.9%	24	387.5%
SIERRA LAKES SHUTTLE	70	62	12.9%	57	22.8%	180	-61.1%	118	-40.7%
<b>Total</b>	<b>5,135,172</b>	<b>4,912,151</b>	<b>4.5%</b>	<b>4,549,666</b>	<b>12.9%</b>	<b>4,123,083</b>	<b>24.5%</b>	<b>4,197,225</b>	<b>22.3%</b>

## YEAR-OVER-YEAR BUS RIDERSHIP BY ROUTE SERVICE TYPE

Boardings by Service Type and Route	Average Weekday	Average Weekday	Percent Change	Average Saturday	Average Saturday	Percent Change	Average Sunday	Average Sunday	Percent Change	Total Monthly	Total Monthly	Percent Change
	Nov-23	Nov-22	23 vs 22	Nov-23	Nov-22	23 vs 22	Nov-23	Nov-22	23 vs 22	Nov-23	Nov-22	23 vs 22
<b>Directly Operated Express Routes</b>												
34 TRANSITWAY EXPRESS	1,629	1,340	21.6%							34,216	28,134	21.6%
39 TRANSITWAY EXPRESS	718									15,069		
95-EXPRESS GOLDEN GLADES	1,149	1,192	-3.6%							24,131	25,037	-3.6%
150-MIAMI BEACH AIRPORT EXPRESS	2,118	2,214	-4.3%	1,933	2,157	-10.4%	1,982	1,980	0.1%	62,124	65,015	-4.4%
338 - WEEKEND EXPRESS				145	307	-52.7%	123	281	-56.3%	1,195	2,633	-54.6%
836 EXPRESS	282	334	-15.4%							5,927	7,005	-15.4%
837 EXPRESS	191	86	120.8%							4,003	259	1445.6%
<b>Subtotal Express Routes</b>	<b>6,087</b>	<b>5,165</b>	<b>17.8%</b>	<b>2,078</b>	<b>2,464</b>	<b>-15.7%</b>	<b>2,105</b>	<b>2,262</b>	<b>-6.9%</b>	<b>146,665</b>	<b>128,083</b>	<b>14.5%</b>
<b>Percentage of All Bus Routes</b>	<b>3.1%</b>	<b>2.9%</b>		<b>1.6%</b>	<b>2.2%</b>		<b>2.2%</b>	<b>2.9%</b>		<b>2.9%</b>	<b>2.8%</b>	
<b>Contracted Routes - Local Service</b>												
2	2,120	2,707	-21.7%	1,381	1,670	-17.3%	991	963	2.9%	55,002	68,335	-19.5%
15	289	258	12.0%	260	73	258.3%	243	52	368.1%	8,316	5,959	39.6%
29	191	465	-59.0%							4,003	9,775	-59.0%
46 - LIBERTY CITY CONN.	8	20	-58.9%							170	414	-58.9%
56	505	353	42.8%	103						11,008	7,421	48.3%
70	241	135	77.8%	108			83			5,900	2,845	107.4%
72	786	606	29.7%	430	384	12.1%	320	290	10.4%	19,821	15,711	26.2%
82 - WESTCHESTER CIRC	24	51	-52.8%	22	38	-43.4%				589	1,218	-51.6%
97	197	222	-11.2%	191	191	-0.4%	153	145	5.8%	5,664	6,144	-7.8%
115	56	126	-55.3%	46	69	-33.2%	27	49	-44.0%	1,498	3,157	-52.5%
152	667	925	-27.8%	339	408	-16.9%	225	296	-24.2%	16,494	22,530	-26.8%
155 - BISCAYNE GARDENS CIRC	20	37	-46.6%							419	785	-46.6%
202 - LITTLE HAITI CONN	43	72	-40.8%	8	26	-69.5%	8	22	-62.4%	973	1,733	-43.9%
211 OVERTOWN CIRCULATOR	32	98	-66.8%							681	2,050	-66.8%
212-SWEETWATER CIRC	11	16	-32.8%							232	345	-32.8%
217 - BUNCHE PARK CIRC	32	58	-45.6%							665	1,223	-45.6%
254-BROWNSVILLE CIRC	2	6	-70.9%							39	134	-70.9%
267-LUDLAM LIMITED	59	155	-61.9%							1,243	3,263	-61.9%
286-NORTH POINTE CIRC	32	82	-60.9%	34	66					806	1,977	-59.2%
344	97	57	69.0%	24						2,133	1,205	77.0%
401 - NORTH OWL	52	59	-12.5%	72	53	36.0%	50	56	-11.1%	1,617	1,727	-6.4%
<b>Subtotal Contracted Reg. &amp; Circ. Routes</b>	<b>5,462</b>	<b>6,509</b>	<b>-16.1%</b>	<b>3,015</b>	<b>2,976</b>	<b>1.3%</b>	<b>2,100</b>	<b>1,873</b>	<b>12.2%</b>	<b>137,273</b>	<b>157,951</b>	<b>-13.1%</b>
<b>Percentage of All Bus Routes</b>	<b>2.8%</b>	<b>3.7%</b>		<b>2.3%</b>	<b>2.7%</b>		<b>2.2%</b>	<b>2.4%</b>		<b>2.7%</b>	<b>3.5%</b>	

(1) Several express routes were suspended beginning at the end of March 2020, due to the SARS-CoV-2 pandemic, while other routes had alignment and schedule modifications made to them, in an ongoing effort to optimize service delivery.

(2) A second major round of changes took place with the 11/13/23 lineup known as the Better Bus Network, as listed at the start of this Metrobus section.

## YEAR-OVER-YEAR BUS RIDERSHIP BY ROUTE SERVICE TYPE

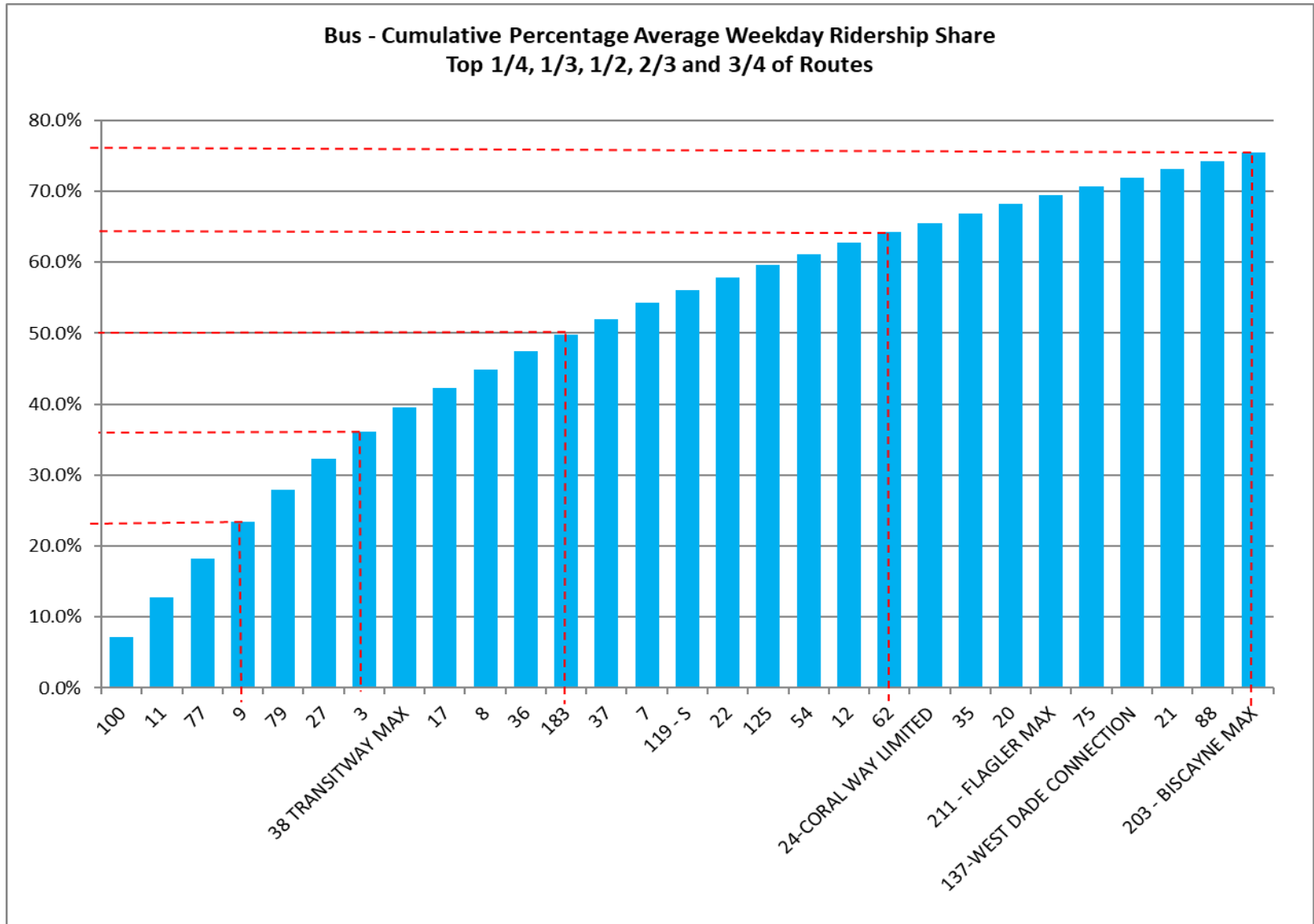
Boardings by Service Type and Route	Average Weekday	Average Weekday	Percent Change	Average Saturday	Average Saturday	Percent Change	Average Sunday	Average Sunday	Percent Change	Total Monthly	Total Monthly	Percent Change
	Nov-23	Nov-22	23 vs 22	Nov-23	Nov-22	23 vs 22	Nov-23	Nov-22	23 vs 22	Nov-23	Nov-22	23 vs 22
<b>Contracted Express Routes</b>												
301-DADE MONROE EXPRESS	1,042	785	32.8%	1,000	778	28.5%	1,066	713	49.4%	31,216	23,156	34.8%
302-CARD SOUND EXPRESS	103	102	1.6%	95	90	5.9%	82	78	4.3%	2,959	2,886	2.5%
<b>Subtotal Contracted Express Routes</b>	<b>1,146</b>	<b>886</b>	<b>29.3%</b>	<b>1,095</b>	<b>868</b>	<b>26.2%</b>	<b>1,147</b>	<b>792</b>	<b>44.9%</b>	<b>34,175</b>	<b>26,042</b>	<b>31.2%</b>
<b>Percentage of All Bus Routes</b>	<b>0.6%</b>	<b>0.5%</b>		<b>0.9%</b>	<b>0.8%</b>		<b>1.2%</b>	<b>1.0%</b>		<b>0.7%</b>	<b>0.6%</b>	
<b>Limited Stop Routes</b>												
24-CORAL WAY LIMITED	2,635	2,127	23.9%	1,810	1,694	6.8%	1,369	1,045	31.1%	69,420	56,666	22.5%
38 TRANSITWAY MAX	6,597	6,326	4.3%	6,510	5,133	26.8%	5,940	4,029	47.4%	194,265	173,520	12.0%
203 - BISCAYNE MAX	2,286	3,365	-32.1%							48,014	70,672	-32.1%
204 KILLIAN MAX	619	1,040	-40.5%							13,006	21,848	-40.5%
211 - FLAGLER MAX	2,484	3,845	-35.4%							52,162	80,739	-35.4%
241 TUTTLE LIMITED	128	227	-43.5%	119	244	-51.2%	74	192	-61.4%	3,544	6,711	-47.2%
272 SUNSET MAX	383	346	10.8%							8,051	7,263	10.8%
277-7TH AVENUE MAX	397	786	-49.4%							8,343	16,501	-49.4%
279 - 79 STREET MAX	638	473	34.9%							13,393	9,929	34.9%
287-SAGA BAY MAX	343	299	14.7%							7,209	6,283	14.7%
288 KENDALL MAX	453	835	-45.7%							9,517	17,542	-45.7%
297-27th AVENUE ORANGE MAX	457	1,322	-65.4%							9,598	27,766	-65.4%
<b>Subtotal Limited Stop Routes</b>	<b>17,421</b>	<b>20,992</b>	<b>-17.0%</b>	<b>8,439</b>	<b>7,071</b>	<b>19.3%</b>	<b>7,383</b>	<b>5,266</b>	<b>40.2%</b>	<b>436,522</b>	<b>495,440</b>	<b>-11.9%</b>
<b>Percentage of All Bus Routes</b>	<b>8.8%</b>	<b>11.8%</b>		<b>6.6%</b>	<b>6.4%</b>		<b>7.7%</b>	<b>6.8%</b>		<b>8.5%</b>	<b>10.9%</b>	
<b>Other (Free) Routes</b>												
132 -TRI-RAIL DORAL SHUTTLE	48	47	0.9%							1,002	993	0.9%
500 - CUTLER BAY LOCAL	262	110	138.7%	241	127	89.9%	55	75	-26.0%	6,743	3,186	111.6%
510 - SKYLAKE CIRCULATOR	375	328	14.3%	179	92	95.4%	181	82	121.6%	9,492	7,664	23.9%
<b>Subtotal (Other) Free Routes</b>	<b>685</b>	<b>485</b>	<b>41.1%</b>	<b>420</b>	<b>219</b>	<b>92.2%</b>	<b>236</b>	<b>156</b>	<b>51.1%</b>	<b>17,237</b>	<b>11,843</b>	<b>45.5%</b>
<b>Percentage of All Bus Routes</b>	<b>0.3%</b>	<b>0.3%</b>		<b>0.3%</b>	<b>0.2%</b>		<b>0.2%</b>	<b>0.2%</b>		<b>0.3%</b>	<b>0.3%</b>	
<b>Contractor-Operated Lifeline Routes</b>												
GREEN HILLS SHUTTLE	7	6	13.0%							26	23	13.0%
KINGS CREEK SHUTTLE	8	22	-65.9%							30	66	-54.5%
SIERRA LAKES SHUTTLE	18	14	22.8%							70	57	22.8%
ROBERT SHARP SHUTTLE	23	19	24.5%							117	94	24.5%
AHEPA SHUTTLE	18	18	-1.4%							71	54	31.5%
FEDERATION GARDENS SHUTTLE				24	21	14.5%				95	83	14.5%
<b>Subtotal Contractor-Operated Lifeline Routes</b>	<b>73</b>	<b>79</b>	<b>-7.8%</b>	<b>24</b>	<b>21</b>	<b>14.5%</b>				<b>409</b>	<b>377</b>	<b>8.5%</b>
<b>Percentage of All Bus Routes</b>	<b>0.0%</b>	<b>0.0%</b>		<b>0.0%</b>	<b>0.0%</b>					<b>0.0%</b>	<b>0.0%</b>	
<b>All Other (Regular) Routes</b>	<b>166,317</b>	<b>143,160</b>	<b>16.2%</b>	<b>113,662</b>	<b>97,315</b>	<b>16.8%</b>	<b>83,116</b>	<b>66,862</b>	<b>24.3%</b>	<b>4,362,891</b>	<b>3,729,930</b>	<b>17.0%</b>
<b>Percentage of All Bus Routes</b>	<b>84.3%</b>	<b>80.8%</b>		<b>88.3%</b>	<b>87.7%</b>		<b>86.5%</b>	<b>86.6%</b>		<b>85.0%</b>	<b>82.0%</b>	
<b>Total Bus System</b>	<b>197,191</b>	<b>177,276</b>	<b>11.2%</b>	<b>128,731</b>	<b>110,932</b>	<b>16.0%</b>	<b>96,088</b>	<b>77,210</b>	<b>24.5%</b>	<b>5,135,172</b>	<b>4,549,666</b>	<b>12.9%</b>

## Bus Routes as Ranked by Percentage of Average Weekday Ridership November 2023

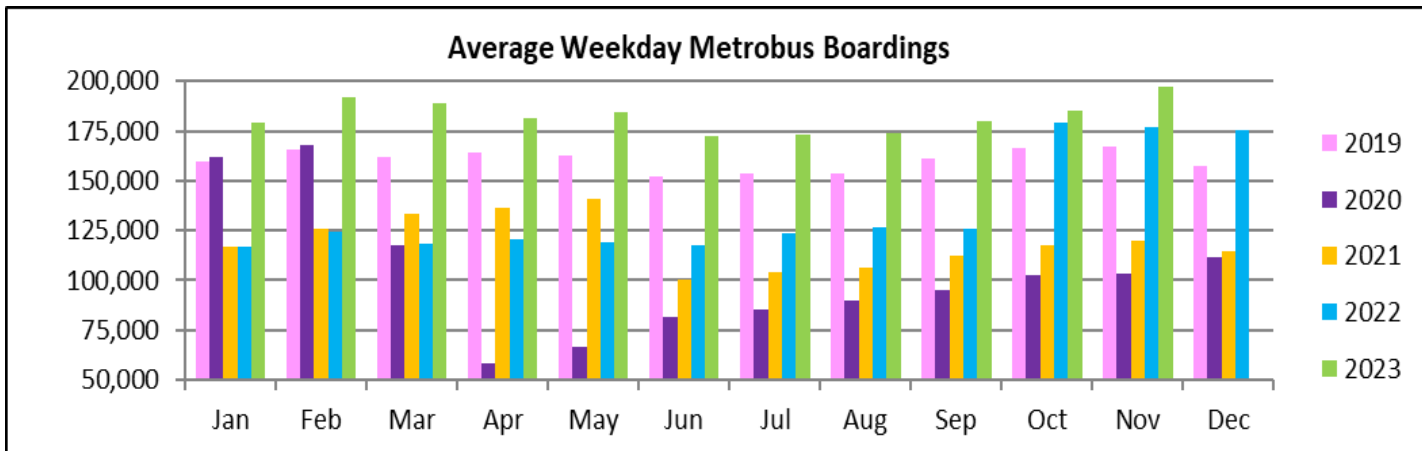
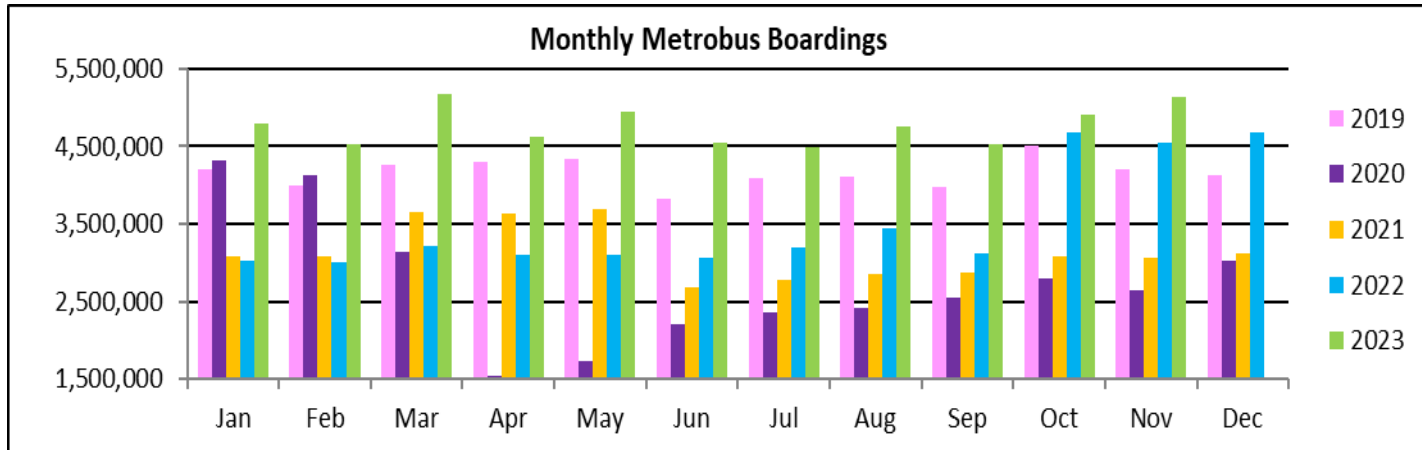
Rank	Route	Average Weekday	Percent Share	Cumul Pct Share	Rank	Route	Average Weekday	Percent Share	Cumul Pct Share	Rank	Route	Average Weekday	Percent Share	Cumul Pct Share
1	100	13,972	7.1%	7.1%	36	150	2,118	1.1%	83.2%	71	70	241	0.1%	98.8%
2	11	11,155	5.7%	12.7%	37	73	2,109	1.1%	84.2%	72	238	240	0.1%	99.0%
3	77	10,823	5.5%	18.2%	38	199	2,009	1.0%	85.3%	73	108	206	0.1%	99.1%
4	9	10,105	5.1%	23.4%	39	207	1,904	1.0%	86.2%	74	136	197	0.1%	99.2%
5	79	8,944	4.5%	27.9%	40	135	1,881	1.0%	87.2%	75	97	197	0.1%	99.3%
6	27	8,649	4.4%	32.3%	41	208	1,778	0.9%	88.1%	76	29	191	0.1%	99.4%
7	3	7,646	3.9%	36.2%	42	107	1,717	0.9%	89.0%	77	837	191	0.1%	99.5%
8	38	6,597	3.3%	39.5%	43	34	1,629	0.8%	89.8%	78	57	187	0.1%	99.5%
9	17	5,517	2.8%	42.3%	44	52	1,583	0.8%	90.6%	79	241	128	0.1%	99.6%
10	8	5,092	2.6%	44.9%	45	110	1,238	0.6%	91.2%	80	302	103	0.1%	99.7%
11	36	5,084	2.6%	47.5%	46	95	1,149	0.6%	91.8%	81	344	97	0.0%	99.7%
12	183	4,584	2.3%	49.8%	47	104	1,091	0.6%	92.3%	82	400	75	0.0%	99.8%
13	37	4,377	2.2%	52.0%	48	301	1,042	0.5%	92.9%	83	267	59	0.0%	99.8%
14	7	4,370	2.2%	54.2%	49	10	973	0.5%	93.4%	84	115	56	0.0%	99.8%
15	119	3,702	1.9%	56.1%	50	72	786	0.4%	93.8%	85	401	52	0.0%	99.8%
16	22	3,451	1.8%	57.8%	51	16	754	0.4%	94.1%	86	132	48	0.0%	99.9%
17	125	3,356	1.7%	59.5%	52	39	718	0.4%	94.5%	87	202	43	0.0%	99.9%
18	54	3,204	1.6%	61.2%	53	19	684	0.3%	94.9%	88	211	32	0.0%	99.9%
19	12	3,171	1.6%	62.8%	54	14	682	0.3%	95.2%	89	286	32	0.0%	99.9%
20	62	2,797	1.4%	64.2%	55	152	667	0.3%	95.5%	90	217	32	0.0%	99.9%
21	24	2,635	1.3%	65.5%	56	279	638	0.3%	95.9%	91	82	24	0.0%	99.9%
22	35	2,634	1.3%	66.9%	57	204	619	0.3%	96.2%	92	RS	23	0.0%	100.0%
23	20	2,576	1.3%	68.2%	58	105	532	0.3%	96.4%	93	155	20	0.0%	100.0%
24	new 211	2,484	1.3%	69.4%	59	56	505	0.3%	96.7%	94	AS	18	0.0%	100.0%
25	75	2,465	1.2%	70.7%	60	297	457	0.2%	96.9%	95	SL	18	0.0%	100.0%
26	137	2,409	1.2%	71.9%	61	288	453	0.2%	97.2%	96	212	11	0.0%	100.0%
27	21	2,357	1.2%	73.1%	62	277	397	0.2%	97.4%	97	46	8	0.0%	100.0%
28	88	2,311	1.2%	74.3%	63	272	383	0.2%	97.6%	98	KC	8	0.0%	100.0%
29	203	2,286	1.2%	75.4%	64	510	375	0.2%	97.8%	99	GH	7	0.0%	100.0%
30	32	2,277	1.2%	76.6%	65	42	367	0.2%	97.9%	100	254	2	0.0%	100.0%
31	26	2,243	1.1%	77.7%	66	113	345	0.2%	98.1%					
32	87	2,193	1.1%	78.8%	67	287	343	0.2%	98.3%					entirely contracted in Nov-23
33	new 103	2,181	1.1%	79.9%	68	15	289	0.1%	98.4%					partially contracted in Nov-23
34	2	2,120	1.1%	81.0%	69	836	282	0.1%	98.6%					eliminated at 11/13/23 lineup
35	40	2,120	1.1%	82.1%	70	500	262	0.1%	98.7%					
<b>Total Boardings</b>												<b>197,191</b>	<b>100.0%</b>	<b>100.0%</b>

- (1) Average weekday ridership rounded to the nearest unit.  
(2) Includes the five Lifeline Shuttles that operate on weekdays: Ahepa (AS), Green Hills (GH), Kings Creek (KC), Robert Sharp (RS) and Sierra Lakes (SL).

# METROBUS CUMULATIVE PERCENTAGE RIDERSHIP SHARE – BY ROUTE



## TOTAL MONTHLY AND AVERAGE WEEKDAY RIDERSHIP YEAR OVER YEAR COMPARISON CHARTS – METROBUS





## “TOP 10 / BOTTOM 10” BUS ROUTES SETS AVERAGE WEEKDAY RIDERSHIP PERFORMANCE YEAR OVER YEAR COMPARISON

Route Set (*), (1), (2)	Nov-23	Nov-22	Absolute Delta	Percent Delta	routes included in set
{ 11 }	11,166	8,460	2,707	32.0%	11, 212
{ 20 }	4,909	2,660	2,249	84.6%	20, 32, 115
{ 17 & 22 & 75 }	11,671	9,512	2,159	22.7%	17, 22, 75, 108, 217
{ 77 }	11,220	9,455	1,765	18.7%	77, 277
{ 9 }	11,832	10,083	1,748	17.3%	9, 10, 16
{ 3 & 203 }	9,933	8,519	1,414	16.6%	3, 93, 203
{ new 107 }	5,096	3,829	1,267	33.1%	35, 56, 70, 71, new 107, 248
{ 27 }	9,106	8,075	1,031	12.8%	27, 297
{ 62 }	2,840	1,815	1,025	56.5%	62, 202
{ 125 }	4,040	3,269	771	23.6%	19, 107, 125
{ 38 }	6,693	7,441	-747	-10.0%	38, 344
{ 2 }	2,152	2,804	-652	-23.2%	2, 211
{ 100 }	18,207	18,745	-538	-2.9%	100, 105, 119, 120
204	619	1,040	-421	-40.5%	204
288	453	835	-382	-45.7%	288
{ 73 & 183 }	7,210	7,499	-289	-3.9%	57, 73, 183, 238, 267, 286
{ new 211 }	12,643	12,808	-165	-1.3%	8, 24, 51, 82, 137, new 211
150	2,118	2,214	-95	-4.3%	150
40	2,120	2,181	-61	-2.8%	40
836	282	334	-51	-15.4%	836

(\*) Averages rounded to the nearest boarding, data as estimated from automatic passenger counter (APC) system; Lifeline shuttles excluded.

- (1) The route sets, denoted by brackets, include the new 11/13/2023 lineup's Better Bus Network route designations, as well as older routes present for the first part of the month and previous months and years, then either renamed, absorbed, or eliminated. The sets were defined to enable reasonably fair comparisons between pre- and post-BBN timeframes, to the extent possible and practical, given the complexity of the changes for some of the routes and sets. The definitions are based on information from the DTPW website, and subject to future adjustments, if necessary.
- (2) The adjective "new" in front of some new Better Bus Network-generated (recycled) route numbers was added to help prevent confusion with older but different routes with the same number present in previous months or years.

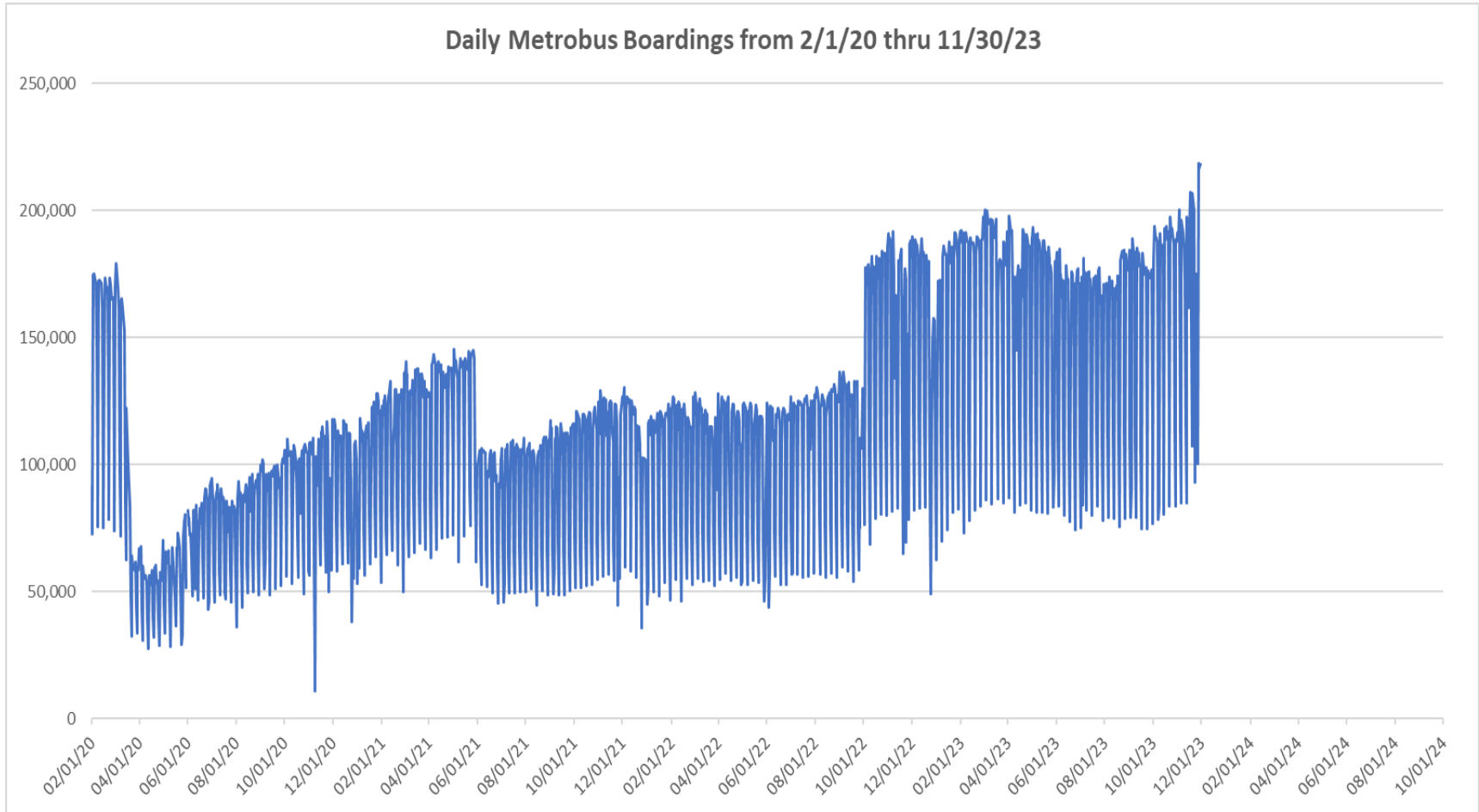
## “TOP 10 / BOTTOM 10” BUS ROUTES SETS AVERAGE WEEKDAY RIDERSHIP PERFORMANCE MONTH OVER MONTH COMPARISON

Route Set (*), (1), (2)	Nov-23	Oct-23	Absolute Delta	Percent Delta	routes included in set
{ 20 }	4,909	2,850	2,059	72.3%	20, 32, 115
{ 11 }	11,166	9,644	1,523	15.8%	11, 212
{ 100 }	18,207	17,117	1,090	6.4%	100, 105, 119, 120
{ 38 }	6,693	5,790	904	15.6%	38, 344
{ 9 }	11,832	10,942	890	8.1%	9, 10, 16
{ 17 & 22 & 75 }	11,671	10,796	875	8.1%	17, 22, 75, 108, 217
{ 3 & 203 }	9,933	9,082	851	9.4%	3, 93, 203
{ 27 }	9,106	8,339	768	9.2%	27, 297
{ 36 }	6,322	5,600	722	12.9%	36, 110
{ new 107 }	5,096	4,447	649	14.6%	35, 56, 70, 71, new 107, 248
{ 2 }	2,152	3,048	-895	-29.4%	2, 211
{ 73 & 183 }	7,210	7,890	-680	-8.6%	57, 73, 183, 238, 267, 286
40	2,120	2,344	-224	-9.6%	40
{ new 211 }	12,643	12,849	-206	-1.6%	8, 24, 51, 82, 137, new 211
{ 52 }	2,251	2,442	-191	-7.8%	52, 152, 252
88	2,311	2,419	-108	-4.5%	88
510	375	471	-97	-20.5%	510
{ 14 }	1,156	1,234	-79	-6.4%	14, 113, 241
95	1,149	1,195	-46	-3.9%	95
272	383	428	-45	-10.5%	272

(\*) Averages rounded to the nearest boarding, data as estimated from automatic passenger counter (APC) system; Lifeline shuttles excluded.

- (1) The route sets, denoted by brackets, include the new 11/13/2023 lineup's Better Bus Network route designations, as well as older routes present for the first part of the month and previous months and years, then either renamed, absorbed, or eliminated. The sets were defined to enable reasonably fair comparisons between pre- and post-BBN timeframes, to the extent possible and practical, given the complexity of the changes for some of the routes and sets. The definitions are based on information from the DTPW website, and subject to future adjustments, if necessary.
- (2) The adjective "new" in front of some new Better Bus Network-generated (recycled) route numbers was added to help prevent confusion with older but different routes with the same number present in previous months or years.

## DAILY METROBUS RIDERSHIP SINCE FEBRUARY 1, 2020



- (1) There was no Metrobus, Metrorail and Metromover service on 5/31/20, as a safety precaution, and no service for any of the four modes on 9/28/22, as a result of Hurricane Ian.
- (2) The dip at the start of the second week of November 2020 is due to Hurricane Eta.
- (3) The reduction seen beginning 6/1/21 is partly due to the resumption of fares and partly the result of resuming reporting Cubic farebox data rather than bus APC counts; the jump seen at the start of November 2022 is due to the return to APC bus ridership counts reporting beginning 10/1/22.
- (4) Periodic (weekly) variations are prominent, since weekday ridership is almost always significantly higher than weekend or holiday ridership.

## METROBUS PARKING PATRONAGE SUMMARY November 2023

PARK-RIDE LOT	ACTUAL AVAILABLE SPACES	ACTUAL OCCUPANCY	PERCENT OCCUPANCY
Transitway / SW 152nd St	200	143	72%
Transitway / SW 168th St (*)	149		
Transitway / SW 200th Street	100	31	31%
Transitway / SW 112 Ave (Target)	450	146	32%
Transitway / SW 244th St	95	73	77%
Transitway / SW 296th St	139	23	17%
Transitway / SW 344th St	248	183	74%
Coral Reef Drive 117/ Turnpike	95	74	78%
Golden Glades Facility	2,150	400	19%
Hammocks Town Center (SW 152 Ave / SW 104 St)	50	16	32%
Kendall Dr./SW 127th Ave	161	10	6%
West Kendall Transit Term (Kendall Dr / SW162 Ave)	40	14	35%
NW 7th Avenue Transit Village (NW 7 Ave / NW 62 St)	25	18	72%
Miami Gardens Dr. / NW 73rd Ave	136	0	0%
Dolphin Station	348	73	21%
Tamiami Station (eff 11-2022)	442	60	14%
I-75 / Miami Gardens Dr (**)	298	0	0%
<b>TOTAL</b>	<b>5,126</b>	<b>1,264</b>	<b>25%</b>

(\*) Closed for construction beginning January 2022

(\*\*) Route 175 Suspended 3/27/2020

# Metrorail



## METRORAIL AVERAGE WEEKDAY BOARDINGS BY STATION (†)

<b>Weekdays</b>	<b>Average Weekday</b>	<b>Average Weekday</b>	<b>Percent Change</b>	<b>Average Weekday</b>	<b>Percent Change</b>	<b>Average Weekday</b>	<b>Percent Change</b>	<b>Average Weekday</b>	<b>Percent Change</b>
<b>STATIONS</b>	<b>Nov-23</b>	<b>Nov-22</b>	<b>YOY</b>	<b>Feb-20</b>	<b>Current vs Feb-20</b>	<b>Oct-23</b>	<b>MOM</b>	<b>Nov-19</b>	<b>YO4Y</b>
ALLAPATTAH	1,667	1,560	6.8%	1,942	-14.2%	1,616	3.1%	1,885	-11.6%
BRICKELL	4,966	4,401	12.8%	6,529	-23.9%	5,158	-3.7%	6,232	-20.3%
BROWNSVILLE	597	680	-12.2%	862	-30.8%	695	-14.2%	839	-28.9%
CIVIC CENTER	4,032	3,696	9.1%	6,143	-34.4%	4,439	-9.2%	5,926	-32.0%
COCONUT GROVE	1,451	1,332	8.9%	1,795	-19.2%	1,390	4.4%	1,701	-14.7%
CULMER	987	887	11.3%	1,392	-29.1%	1,042	-5.3%	1,321	-25.3%
DADELAND NORTH	3,584	3,563	0.6%	5,926	-39.5%	4,091	-12.4%	5,832	-38.5%
DADELAND SOUTH	4,009	4,132	-3.0%	7,150	-43.9%	4,719	-15.0%	7,120	-43.7%
DOUGLAS ROAD	2,913	2,797	4.2%	3,624	-19.6%	3,038	-4.1%	3,555	-18.1%
DR. MARTIN LUTHER KING, JR.	788	797	-1.2%	1,157	-31.9%	843	-6.5%	1,162	-32.2%
EARLINGTON HEIGHTS	1,360	1,241	9.6%	1,662	-18.2%	1,352	0.6%	1,582	-14.1%
GOVERNMENT CENTER	6,291	6,274	0.3%	10,557	-40.4%	6,896	-8.8%	10,067	-37.5%
HIALEAH	875	1,039	-15.8%	1,253	-30.1%	800	9.3%	1,286	-32.0%
MIAMI INTERNATIONAL AIRPORT	1,214	1,204	0.8%	1,711	-29.1%	1,331	-8.8%	1,692	-28.3%
NORTHSIDE	1,343	1,206	11.4%	1,476	-9.0%	1,253	7.2%	1,367	-1.8%
OKEECHOBEE	908	743	22.2%	1,164	-22.0%	891	1.9%	1,137	-20.1%
OVERTOWN / ARENA	1,679	1,142	47.1%	2,274	-26.2%	1,749	-4.0%	2,166	-22.5%
PALMETTO	1,244	1,136	9.5%	1,543	-19.4%	1,241	0.3%	1,358	-8.4%
SANTA CLARA	691	605	14.2%	812	-14.9%	704	-1.9%	778	-11.2%
SOUTH MIAMI	1,903	1,870	1.8%	3,015	-36.9%	2,088	-8.9%	2,914	-34.7%
TRI-RAIL	1,140	1,014	12.4%	1,207	-5.5%	1,114	2.4%	1,139	0.1%
UNIVERSITY	1,997	1,875	6.5%	2,784	-28.3%	2,189	-8.8%	2,595	-23.0%
VIZCAYA	1,169	1,044	11.9%	1,390	-15.9%	1,096	6.6%	1,321	-11.5%
<b>TOTAL</b>	<b>46,807</b>	<b>44,238</b>	<b>5.8%</b>	<b>67,367</b>	<b>-30.5%</b>	<b>49,735</b>	<b>-5.9%</b>	<b>64,976</b>	<b>-28.0%</b>

(†) In this table and those which follow, “YOY” stands for “year-over-year”, “MOM” for “month-over-month” and “YO4Y” for “year over four years”, i.e., current month vs 12 months prior, one month prior, and 48 months prior, respectively. The February 2020 numbers serve as a pre-pandemic benchmark.

## METRORAIL AVERAGE SATURDAY BOARDINGS BY STATION

<b>Saturdays</b>	Average Saturday	Average Saturday	Percent Change	Average Saturday	Percent Change	Average Saturday	Percent Change	Average Saturday	Percent Change
STATIONS	Nov-23	Nov-22	YOY	Feb-20	Current vs Feb-20	Oct-23	MOM	Nov-19	YO4Y
ALLAPATTAH	971	936	3.7%	1,051	-7.6%	797	21.9%	996	-2.5%
BRICKELL	1,984	2,218	-10.6%	2,811	-29.4%	2,254	-12.0%	2,604	-23.8%
BROWNSVILLE	390	433	-10.0%	520	-25.0%	411	-5.2%	520	-25.1%
CIVIC CENTER	824	653	26.2%	959	-14.1%	712	15.7%	926	-11.0%
COCONUT GROVE	832	716	16.2%	928	-10.4%	659	26.3%	833	-0.1%
CULMER	517	437	18.4%	721	-28.2%	455	13.7%	677	-23.6%
DADELAND NORTH	1,447	1,357	6.6%	1,994	-27.5%	1,265	14.4%	1,924	-24.8%
DADELAND SOUTH	1,864	1,871	-0.4%	2,625	-29.0%	1,876	-0.7%	2,580	-27.8%
DOUGLAS ROAD	1,309	1,187	10.2%	1,319	-0.8%	1,119	16.9%	1,333	-1.9%
DR. MARTIN LUTHER KING, JR.	513	474	8.3%	625	-17.9%	465	10.3%	621	-17.4%
EARLINGTON HEIGHTS	883	725	21.9%	935	-5.6%	745	18.6%	894	-1.2%
GOVERNMENT CENTER	3,008	2,853	5.4%	4,262	-29.4%	2,596	15.9%	3,753	-19.9%
HIALEAH	528	531	-0.4%	583	-9.4%	403	31.1%	613	-13.8%
MIAMI INTERNATIONAL AIRPORT	840	1,043	-19.4%	1,330	-36.8%	937	-10.3%	1,304	-35.6%
NORTHSIDE	892	759	17.6%	878	1.6%	737	21.0%	851	4.8%
OKEECHOBEE	386	295	31.1%	408	-5.5%	324	19.0%	398	-3.0%
OVERTOWN / ARENA	615	442	39.1%	678	-9.3%	570	8.0%	552	11.5%
PALMETTO	469	391	19.8%	458	2.3%	368	27.6%	348	34.6%
SANTA CLARA	397	317	25.1%	422	-6.0%	311	27.5%	394	0.6%
SOUTH MIAMI	962	924	4.1%	1,256	-23.4%	903	6.5%	1,173	-18.0%
TRI-RAIL	640	517	23.8%	614	4.1%	510	25.5%	542	18.0%
UNIVERSITY	592	572	3.5%	714	-17.1%	558	6.0%	662	-10.6%
VIZCAYA	606	494	22.7%	622	-2.6%	446	35.9%	604	0.4%
<b>TOTAL</b>	<b>21,465</b>	<b>20,141</b>	<b>6.6%</b>	<b>26,714</b>	<b>-19.6%</b>	<b>19,419</b>	<b>10.5%</b>	<b>25,101</b>	<b>-14.5%</b>

## METRORAIL AVERAGE SUNDAY BOARDINGS BY STATION

<b>Sundays</b>	Average Sunday	Average Sunday	Percent Change	Average Sunday	Percent Change	Average Sunday	Percent Change	Average Sunday	Percent Change
STATIONS	Nov-23	Nov-22	YOY	Feb-20	Current vs Feb-20	Oct-23	MOM	Nov-19	YO4Y
ALLAPATTAH	710	632	12.2%	791	-10.3%	596	19.1%	772	-8.0%
BRICKELL	1,693	1,648	2.7%	2,379	-28.8%	1,749	-3.2%	2,097	-19.3%
BROWNSVILLE	290	324	-10.4%	406	-28.6%	282	3.0%	382	-24.0%
CIVIC CENTER	626	522	19.8%	791	-20.9%	526	19.0%	713	-12.2%
COCONUT GROVE	619	490	26.3%	838	-26.2%	494	25.4%	651	-4.9%
CULMER	387	324	19.4%	616	-37.2%	327	18.2%	536	-27.9%
DADELAND NORTH	1,113	968	14.9%	1,685	-34.0%	928	19.9%	1,454	-23.5%
DADELAND SOUTH	1,459	1,359	7.4%	2,210	-34.0%	1,428	2.2%	2,000	-27.0%
DOUGLAS ROAD	953	793	20.2%	1,090	-12.5%	774	23.2%	969	-1.7%
DR. MARTIN LUTHER KING, JR.	410	351	16.7%	506	-19.1%	359	14.2%	472	-13.2%
EARLINGTON HEIGHTS	620	504	23.1%	799	-22.4%	533	16.3%	730	-15.1%
GOVERNMENT CENTER	2,383	2,010	18.6%	4,044	-41.1%	2,005	18.9%	2,956	-19.4%
HIALEAH	351	391	-10.1%	472	-25.6%	319	10.2%	449	-21.8%
MIAMI INTERNATIONAL AIRPORT	1,092	1,055	3.5%	1,343	-18.7%	858	27.3%	1,265	-13.7%
NORTHSIDE	680	544	25.1%	653	4.2%	562	21.1%	652	4.3%
OKEECHOBEE	239	162	47.2%	273	-12.7%	199	20.0%	253	-5.5%
OVERTOWN / ARENA	477	325	46.7%	544	-12.4%	441	8.1%	464	2.8%
PALMETTO	297	203	46.2%	336	-11.7%	222	33.4%	216	37.7%
SANTA CLARA	241	213	13.3%	280	-13.8%	207	16.2%	271	-11.1%
SOUTH MIAMI	722	617	17.0%	987	-26.8%	606	19.1%	849	-15.0%
TRI-RAIL	520	366	41.8%	528	-1.6%	367	41.6%	437	18.9%
UNIVERSITY	467	436	7.2%	608	-23.2%	427	9.5%	490	-4.7%
VIZCAYA	441	348	26.5%	524	-15.9%	331	33.3%	448	-1.7%
<b>TOTAL</b>	<b>16,787</b>	<b>14,583</b>	<b>15.1%</b>	<b>22,701</b>	<b>-26.1%</b>	<b>14,538</b>	<b>15.5%</b>	<b>19,523</b>	<b>-14.0%</b>

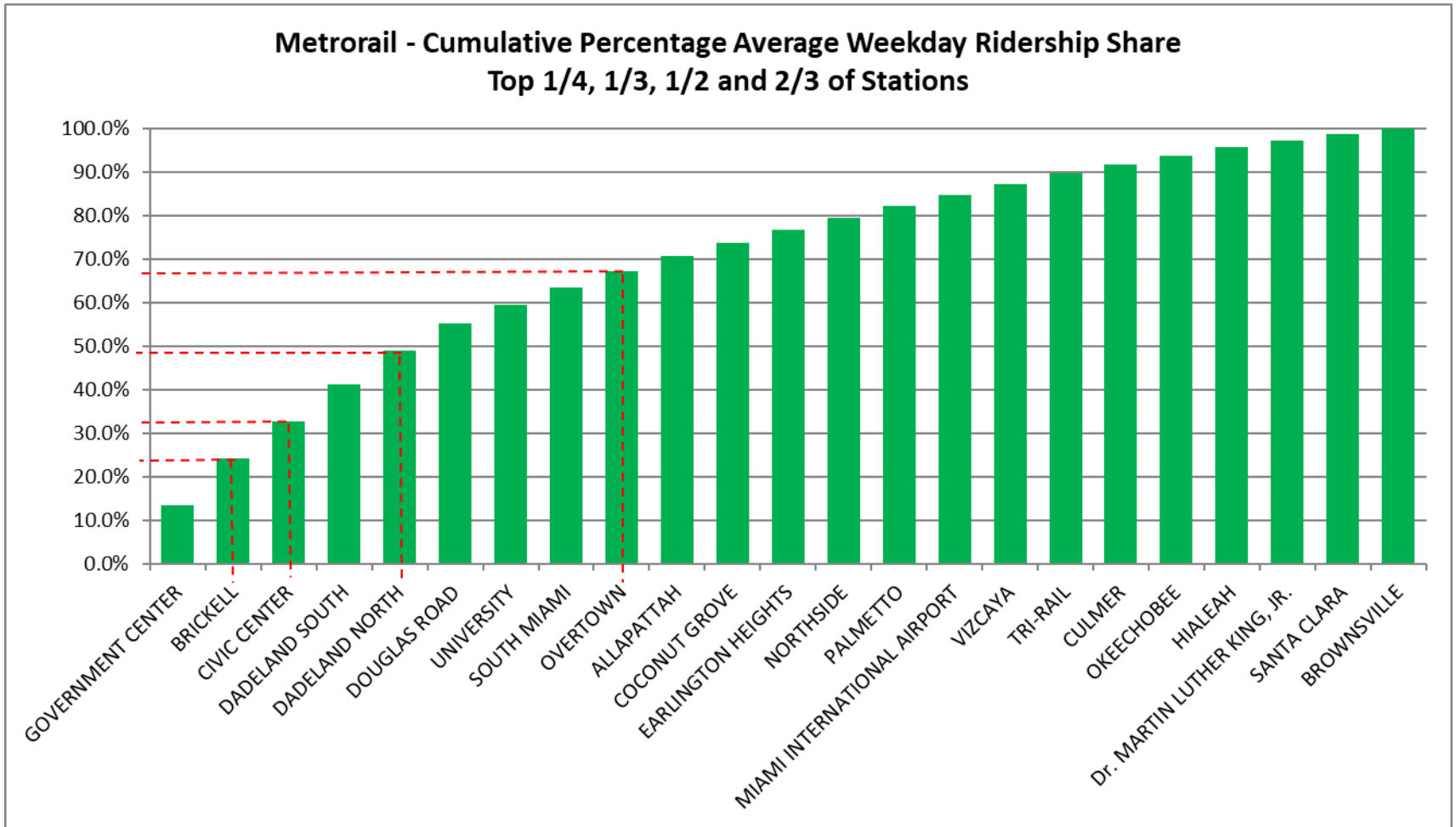


## METRORAIL TOTAL MONTHLY BOARDINGS BY STATION

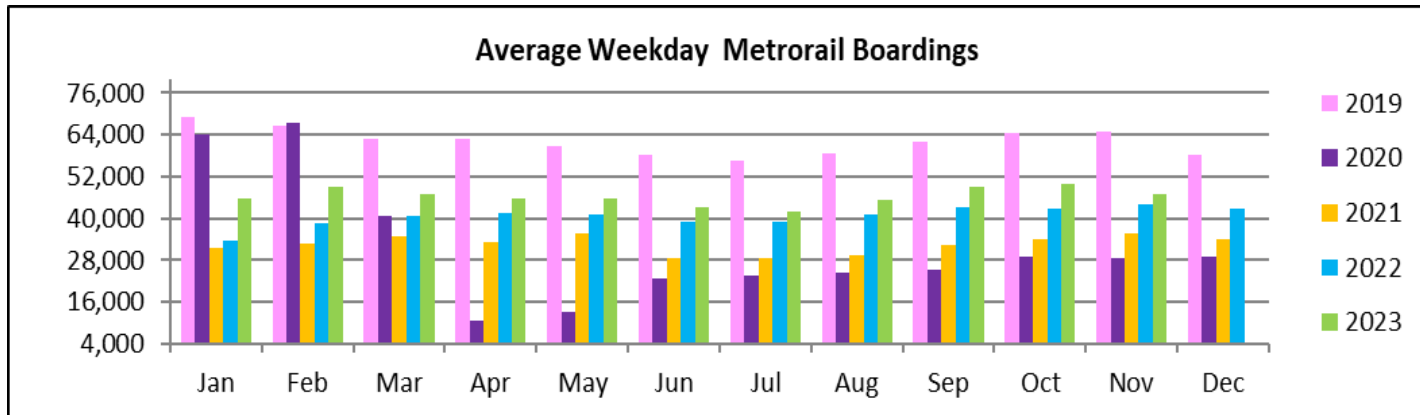
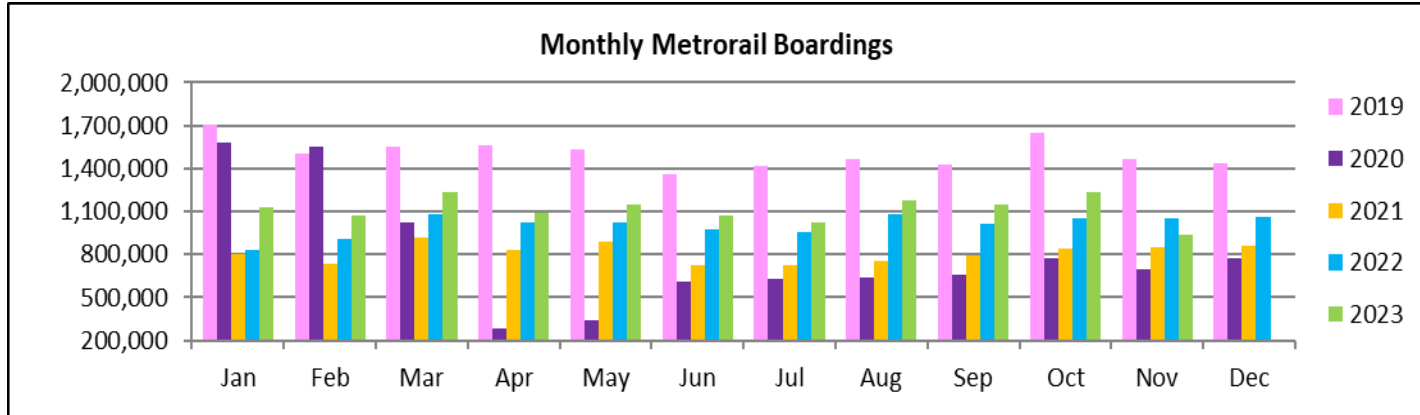
Monthly Totals (†)	Total Month	Total Month	Percent Change	Total Month	Percent Change	Total Month	Percent Change	Total Month	Percent Change
	Nov-23	Nov-22	YOY	Feb-20	Current vs Feb-20	Oct-23	MOM	Nov-19	YO4Y
ALLAPATTAH	35,468	39,131	-9.4%	46,868	-24.3%	41,576	-14.7%	45,416	-21.9%
BRICKELL	98,955	107,419	-7.9%	152,259	-35.0%	130,471	-24.2%	144,016	-31.3%
BROWNSVILLE	13,018	17,335	-24.9%	21,285	-38.8%	18,310	-28.9%	20,905	-37.7%
CIVIC CENTER	71,754	79,480	-9.7%	128,921	-44.3%	102,333	-29.9%	121,023	-40.7%
COCONUT GROVE	30,660	32,770	-6.4%	43,580	-29.6%	35,491	-13.6%	40,217	-23.8%
CULMER	20,015	21,620	-7.4%	33,497	-40.2%	26,293	-23.9%	31,624	-36.7%
DADELAND NORTH	70,076	82,540	-15.1%	132,894	-47.3%	98,950	-29.2%	128,684	-45.5%
DADELAND SOUTH	80,936	98,644	-18.0%	162,416	-50.2%	117,607	-31.2%	159,249	-49.2%
DOUGLAS ROAD	54,965	65,470	-16.0%	82,141	-33.1%	74,846	-26.6%	79,562	-30.9%
DR. MARTIN LUTHER KING, JR.	17,266	20,016	-13.7%	27,980	-38.3%	22,114	-21.9%	27,936	-38.2%
EARLINGTON HEIGHTS	29,337	30,965	-5.3%	40,697	-27.9%	35,203	-16.7%	38,851	-24.5%
GOVERNMENT CENTER	126,108	148,583	-15.1%	243,414	-48.2%	170,596	-26.1%	224,191	-43.7%
HIALEAH	18,384	25,444	-27.7%	29,516	-37.7%	20,938	-12.2%	30,242	-39.2%
MIAMI INTERNATIONAL AIRPORT	29,066	34,532	-15.8%	46,115	-37.0%	37,249	-22.0%	46,394	-37.3%
NORTHSIDE	29,410	30,694	-4.2%	36,127	-18.6%	33,204	-11.4%	34,296	-14.2%
OKEECHOBEE	17,700	17,310	2.3%	26,026	-32.0%	21,755	-18.6%	25,070	-29.4%
OVERTOWN / ARENA	32,046	25,981	23.3%	49,911	-35.8%	42,478	-24.6%	45,787	-30.0%
PALMETTO	23,848	25,699	-7.2%	33,944	-29.7%	29,706	-19.7%	28,742	-17.0%
SANTA CLARA	14,187	14,759	-3.9%	19,245	-26.3%	17,704	-19.9%	18,470	-23.2%
SOUTH MIAMI	36,932	44,898	-17.7%	69,412	-46.8%	52,310	-29.4%	65,953	-44.0%
TRI-RAIL	24,211	24,516	-1.2%	29,120	-16.9%	28,164	-14.0%	26,974	-10.2%
UNIVERSITY	37,106	42,229	-12.1%	61,253	-39.4%	52,350	-29.1%	55,224	-32.8%
VIZCAYA	23,673	25,031	-5.4%	32,497	-27.2%	27,448	-13.8%	30,622	-22.7%
<b>TOTAL</b>	<b>935,121</b>	<b>1,055,066</b>	<b>-11.4%</b>	<b>1,549,118</b>	<b>-39.6%</b>	<b>1,237,096</b>	<b>-24.4%</b>	<b>1,469,448</b>	<b>-36.4%</b>

(†) A transition from Nextfare (faregate) data to a video camera system at all Rail stations was made necessary by the Better Bus Network launch on 11/13/2023 and its attendant free fares. This resulted in data gaps in Nov-23.

# METRORAIL CUMULATIVE PERCENTAGE RIDERSHIP SHARE



## TOTAL MONTHLY AND AVERAGE WEEKDAY RIDERSHIP YEAR OVER YEAR COMPARISON CHARTS – METRORAIL

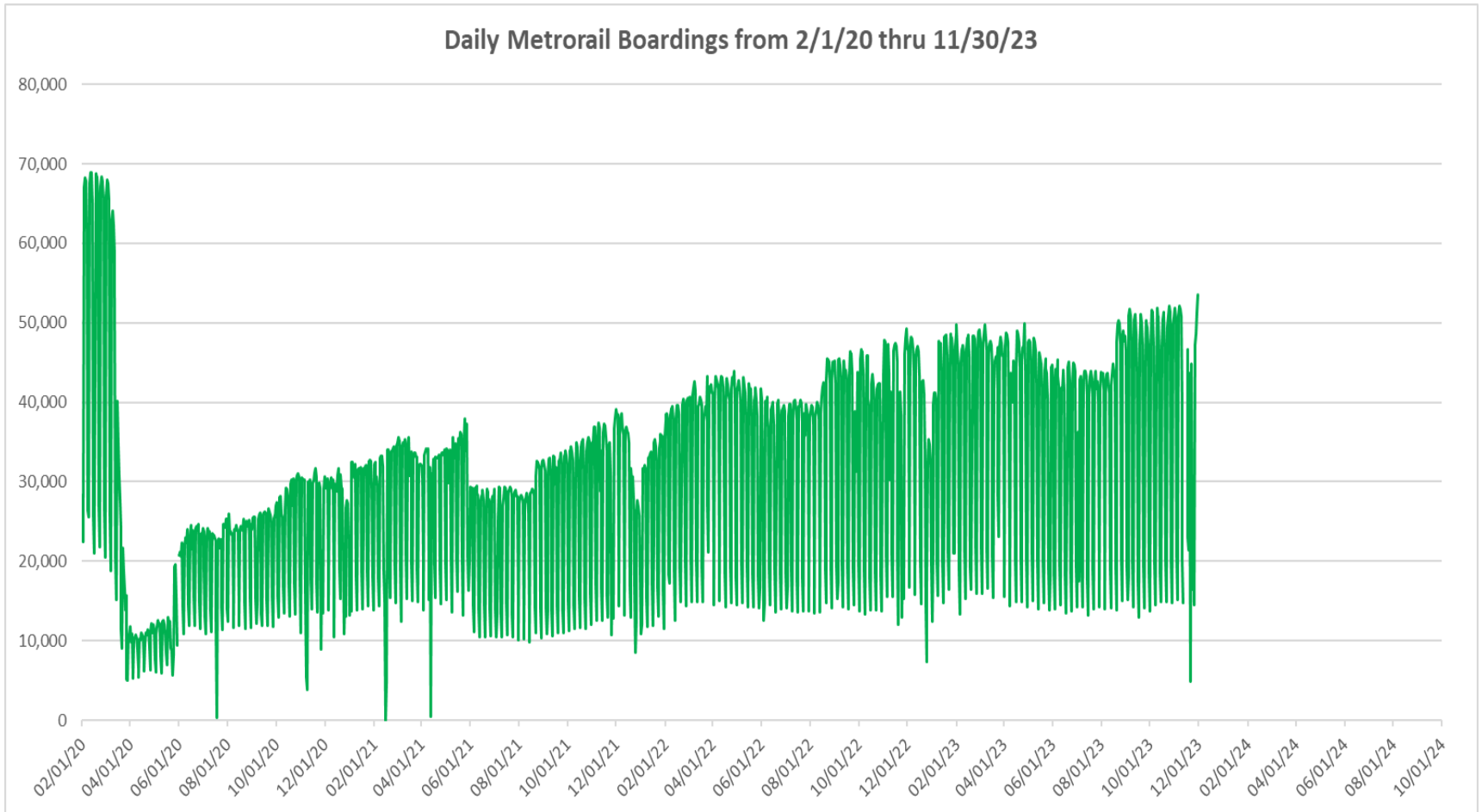


**“TOP 5 / BOTTOM 5” RAIL STATIONS AVERAGE WEEKDAY RIDERSHIP PERFORMANCE  
YEAR OVER YEAR COMPARISONS**

<b>Station</b>	<b>Nov-23</b>	<b>Nov-22</b>	<b>Absolute Delta (1)</b>	<b>Percent Delta</b>
BRICKELL	4,966	4,401	565	12.8%
OVERTOWN	1,679	1,142	538	47.1%
CIVIC CENTER	4,032	3,696	336	9.1%
OKEECHOBEE	908	743	165	22.2%
NORTHSIDE	1,343	1,206	137	11.4%
HIALEAH	875	1,039	-164	-15.8%
DADELAND SOUTH	4,009	4,132	-123	-3.0%
BROWNSVILLE	597	680	-83	-12.2%
Dr. MARTIN LUTHER KING, JR.	788	797	-10	-1.2%
MIAMI INTERNATIONAL AIRPORT	1,214	1,204	10	0.8%

- (1) Averages rounded to the nearest boarding.
- (2) As a result of the SARS-CoV-2 pandemic, rides were fare-free beginning March 22, 2020, leading to the use of a video camera counter system from that date going forward. Fares were reinstated June 1, 2021, and ridership data from the faregate system rather than the video cameras resumed. Video camera use was reinstated a second time, for the launch of the Better Bus Network on 11/13/2023, and its attendant free fares.

## DAILY METRORAIL RIDERSHIP SINCE FEBRUARY 1, 2020



- (1) There was no Metrobus, Metrorail and Metromover service on 5/31/20, as a safety precaution, and no service for any of the four modes on 9/28/22 as a result of Hurricane Ian.
- (2) The dip at the start of the second week of November 2020 is due to Hurricane Eta; these are *raw data* from the Unleash Live contractor AI video system.
- (3) The dip on 4/13/21 is due to a loss of connectivity at all stations, affecting a few stations over the next two days as well; a similar loss of connectivity is seen on 11/21/23.
- (4) The reduction seen beginning 6/1/21 is partly due to the resumption of fares and partly the result of resuming reporting Cubic faregate data rather than video camera counts.
- (5) As a result of free fares to launch the Better Bus Network, faregates are open beginning 11/13/23, and Unleash Live AI video system ridership counts are reported starting 11/17/23.
- (6) Periodic (weekly) variations are prominent, since weekday ridership is almost always significantly higher than weekend or holiday ridership.

## METRORAIL PARKING PATRONAGE SUMMARY November 2023

PARK-RIDE LOT	ACTUAL CAPACITY (1)	ACTUAL OCCUPANCY (2)	PERCENT OCCUPANCY
DADELAND SOUTH	1,260	729	58%
DADELAND NORTH	1,963	727	37%
SOUTH MIAMI	1,081	233	22%
UNIVERSITY	260	172	66%
COCONUT GROVE	100	41	41%
VIZCAYA	120	43	36%
CULMER	25	17	66%
SANTA CLARA	61	37	61%
ALLAPATTAH	74	7	10%
EARLINGTON HEIGHTS	361	147	41%
BROWNSVILLE	100	79	79%
DR. MARTIN LUTHER KING JR. (MDT)	62	0	0%
DR. MARTIN LUTHER KING JR. (GARAGE)	631	0	0%
NORTHSIDE	100	78	78%
HIALEAH	338	42	12%
OKEECHOBEE	1,398	136	10%
PALMETTO	700	143	20%
<b>TOTAL</b>	<b>8,634</b>	<b>2,632</b>	<b>30%</b>

- (1) Number of spaces could vary each week; shown are available spaces during final week of month, as submitted by DTPW Safety & Security office.  
(2) All sampled occupancy data provided by DTPW Safety & Security office; calculations are revisions to those submitted by that entity.  
(3) Daily averages rounded to nearest unit, with fewer counts at some stations due to shortage of DTPW Safety & Security office staff; calculations are based on sampled counted days only per raw data submitted, with resulting average daily occupancy shown.  
(\*) Closed throughout the month, per the DTPW Safety & Security office.

# Metromover



November 2023

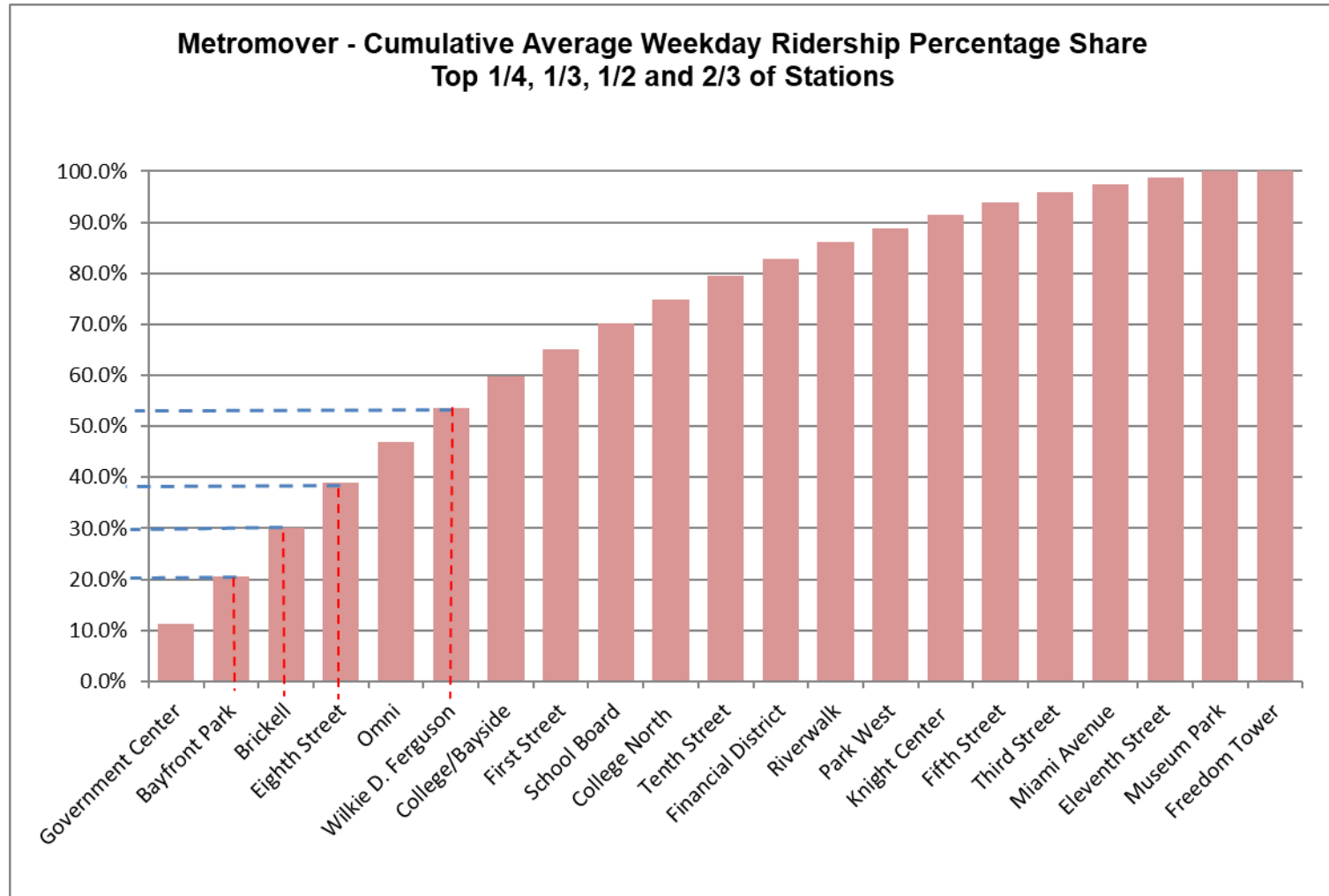
## METROMOVER MONTHLY AND AVERAGE DAILY BOARDINGS BY STATION

	Average Weekday	Average Weekday	Percent Change	Average Saturday	Average Saturday	Percent Change	Average Sunday	Average Sunday	Percent Change	Total Monthly	Total Monthly	Percent Change
STATIONS	Nov-23	Nov-22	23 vs 22	Nov-23	Nov-22	23 vs 22	Nov-23	Nov-22	23 vs 22	Nov-23	Nov-22	23 vs 22
School Board	1,175	485	142.4%	918	432	112.3%	858	266	223.2%	32,444	12,581	157.9%
Omni	1,846	1,521	21.4%	1,423	1,144	24.4%	1,367	874	56.4%	50,403	40,256	25.2%
Museum Park	279	266	5.1%	457	381	20.0%	359	333	7.9%	9,523	8,741	8.9%
Eleventh Street	317	254	24.8%	317	251	26.3%	231	164	41.2%	8,968	7,060	27.0%
Park West	615	681	-9.8%	570	683	-16.6%	404	500	-19.1%	17,018	19,457	-12.5%
Freedom Tower												
Government Center	2,595	2,294	13.1%	1,732	2,071	-16.4%	1,413	1,547	-8.7%	31,880	19,772	61.2%
Miami Avenue	378			279			203			9,952		
Third Street	448	203	120.4%	491	175	180.0%	450	148	203.4%	13,512	5,738	135.5%
Knight Center	606	555	9.3%	354	351	0.9%	273	239	14.2%	15,083	13,886	8.6%
Bayfront Park	2,182	2,004	8.8%	1,736	1,367	27.0%	1,454	1,023	42.1%	59,172	51,992	13.8%
First Street	1,253			1,053			922			34,670		
College/Bayside	1,456	1,716	-15.2%	1,454	1,531	-5.0%	1,247	1,164	7.1%	41,848	47,062	-11.1%
College North	1,085	938	15.8%	652	762	-14.5%	564	507	11.1%	26,946	24,666	9.2%
Wilkie D. Ferguson	1,490	1,254	18.7%	969	915	5.8%	836	666	25.6%	38,408	27,512	39.6%
Riverwalk	732	448	63.4%	477	356	33.9%	411	300	37.2%	18,961	12,142	56.2%
Fifth Street	572	430	33.1%	402	339	18.5%	339	234	45.0%	15,178	11,409	33.0%
Eighth Street	2,079	1,377	51.0%	1,724	1,336	29.0%	1,463	932	56.9%	57,480	38,044	51.1%
Tenth Street	1,062	923	15.0%	776	770	0.7%	647	545	18.8%	27,036	24,722	9.4%
Brickell	2,173	1,872	16.1%	1,421	1,511	-6.0%	1,300	1,173	10.8%	56,844	50,291	13.0%
Financial District	783	960	-18.5%	413	560	-26.2%	387	390	-0.8%	19,561	23,819	-17.9%
<b>TOTAL</b>	<b>23,124</b>	<b>18,181</b>	<b>27.2%</b>	<b>17,613</b>	<b>14,934</b>	<b>17.9%</b>	<b>15,128</b>	<b>11,004</b>	<b>37.5%</b>	<b>584,887</b>	<b>439,150</b>	<b>33.2%</b>

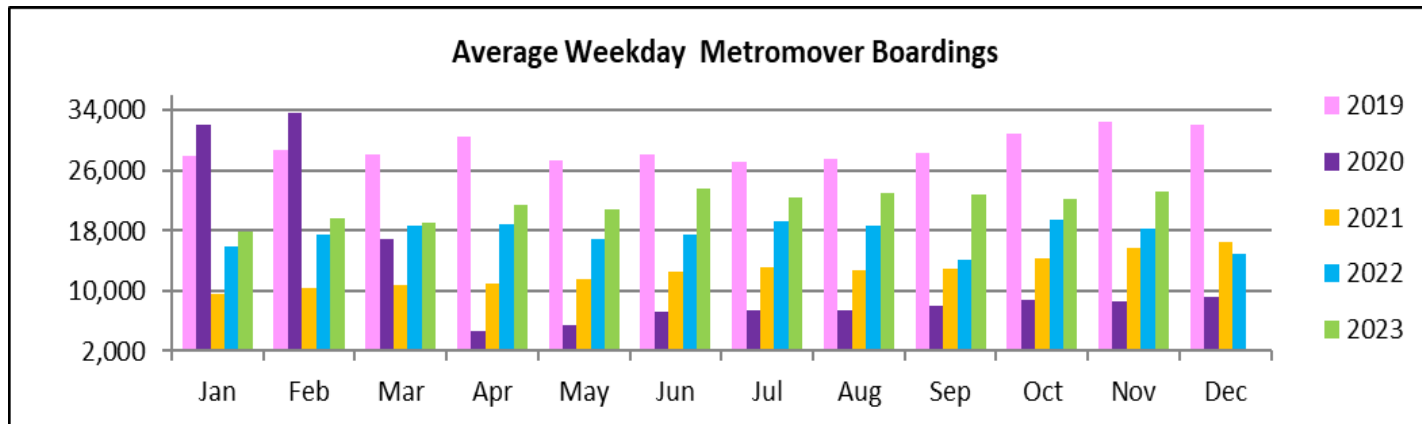
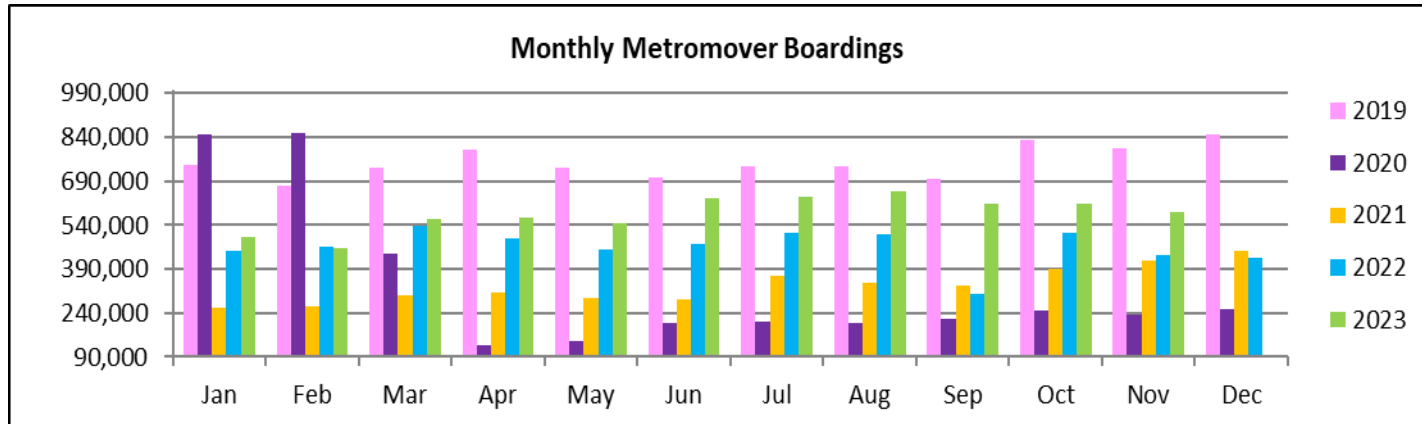
(1) Freedom Tower Station was closed for construction both years, while Miami Avenue and First Street experienced data outages due to installation of new equipment..



# METROMOVER CUMULATIVE PERCENTAGE RIDERSHIP SHARE



## TOTAL MONTHLY AND AVERAGE WEEKDAY RIDERSHIP YEAR OVER YEAR COMPARISON CHARTS – METROMOVER

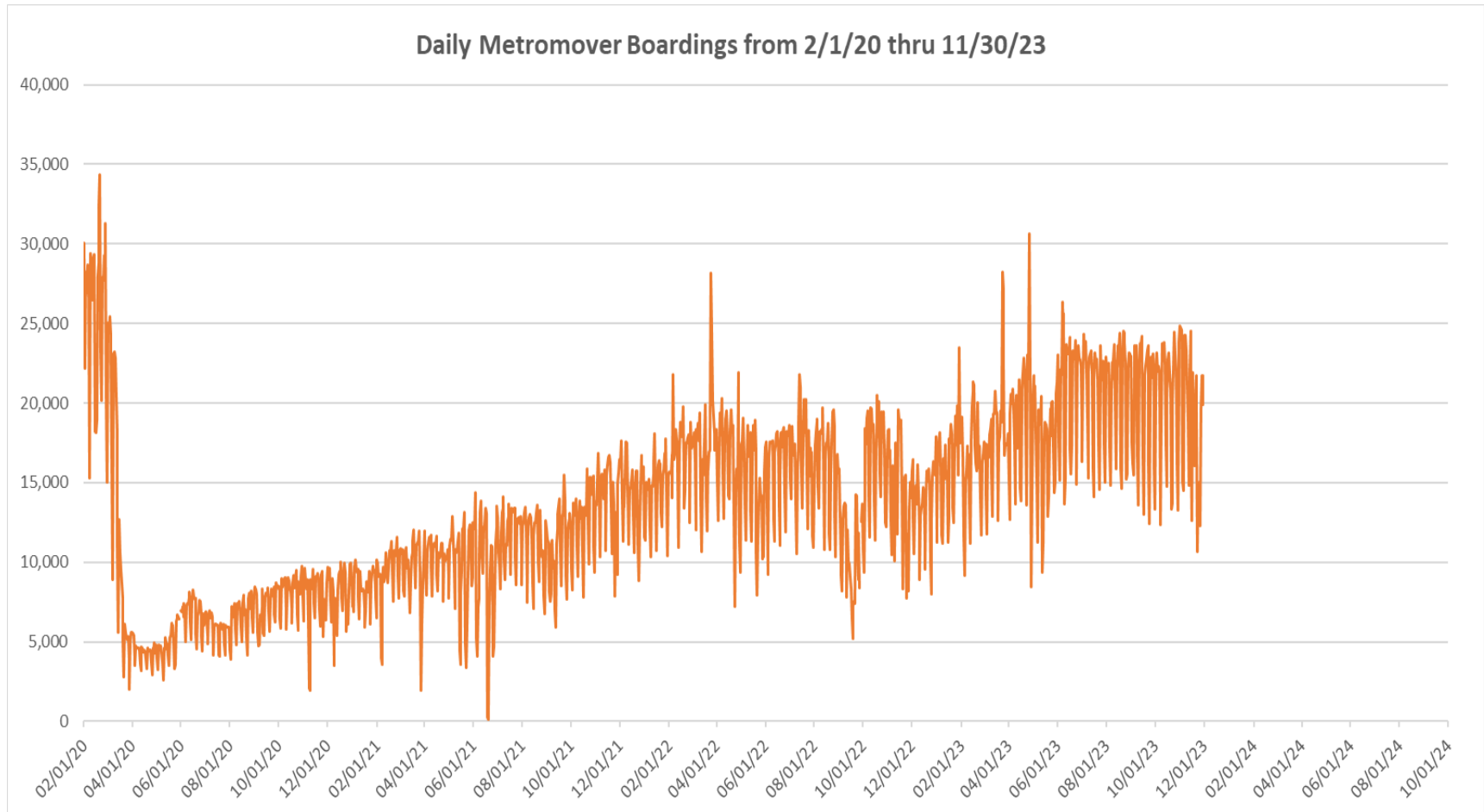


**“TOP 5 / BOTTOM 5” MOVER STATIONS AVERAGE WEEKDAY RIDERSHIP PERFORMANCE  
YEAR OVER YEAR COMPARISONS**

<b>Station</b>	<b>Nov-23</b>	<b>Nov-22</b>	<b>Absolute Delta (1)</b>	<b>Percent Delta</b>
Eighth Street	2,079	1,377	702	51.0%
School Board	1,175	485	690	142.4%
Omni	1,846	1,521	325	21.4%
Brickell	2,173	1,872	301	16.1%
Government Center	2,595	2,294	301	13.1%
College/Bayside	1,456	1,716	-260	-15.2%
Financial District	783	960	-177	-18.5%
Park West	615	681	-67	-9.8%
Museum Park	279	266	14	5.1%
Knight Center	606	555	51	9.3%

(1) Averages rounded to the nearest boarding.

## DAILY METROMOVER RIDERSHIP SINCE FEBRUARY 1, 2020



- (1) There was no Metrobus, Metrorail and Metromover service on 5/31/20, as a safety precaution, and no service for any of the four modes on 9/28/22 as a result of Hurricane Ian.
- (2) The dip at the start of the second week of November 2020 is due to Hurricane Eta; these are *raw data* from the UTA contractor APC system. Other more recent dips are due to various station closures (mostly on weekends) for system maintenance purposes.
- (3) Periodic (weekly) variations are prominent, since weekday ridership is almost always significantly higher than weekend or holiday ridership.

## Special Transportation Services

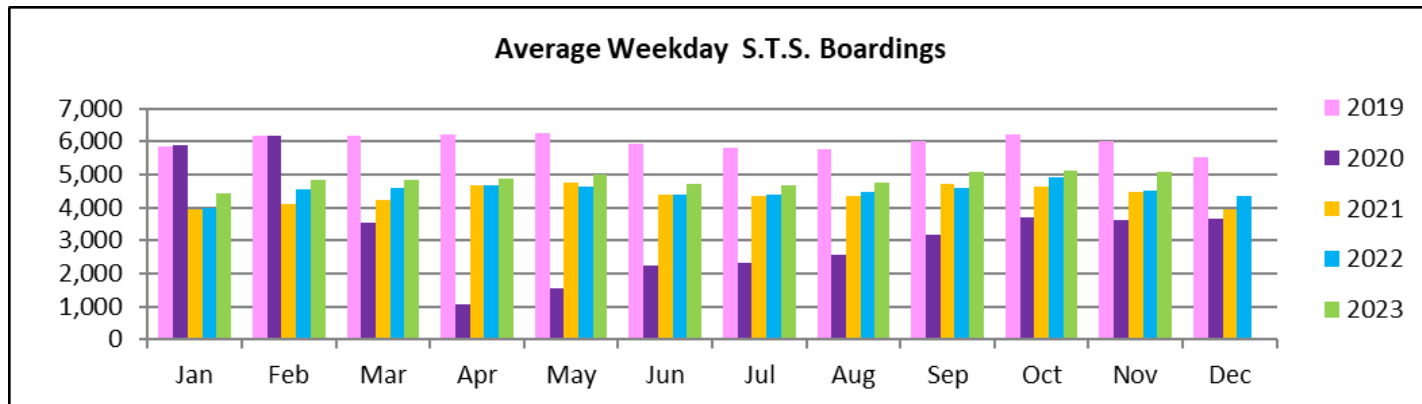
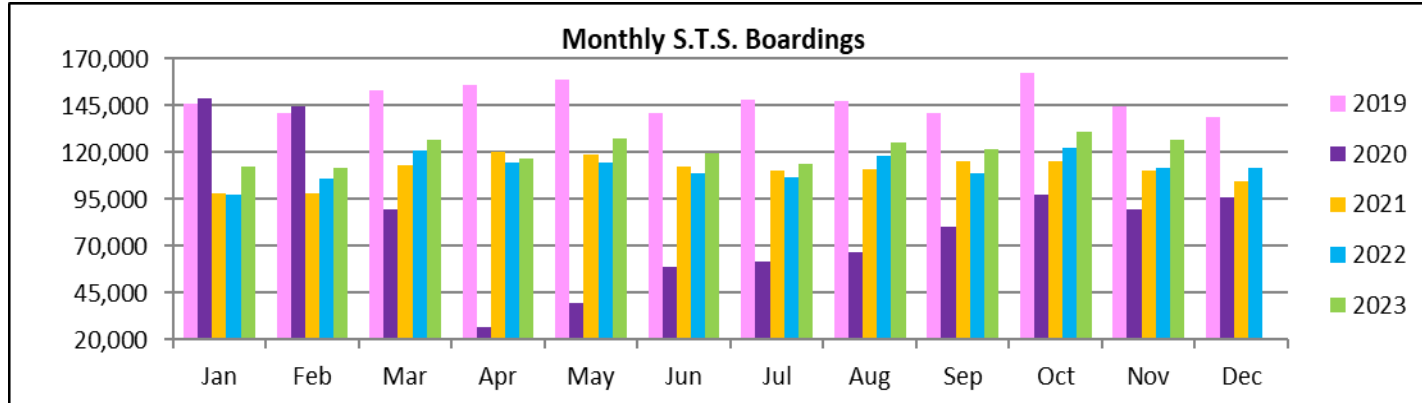


**STS MONTHLY AND AVERAGE DAILY BOARDINGS  
November 2023**

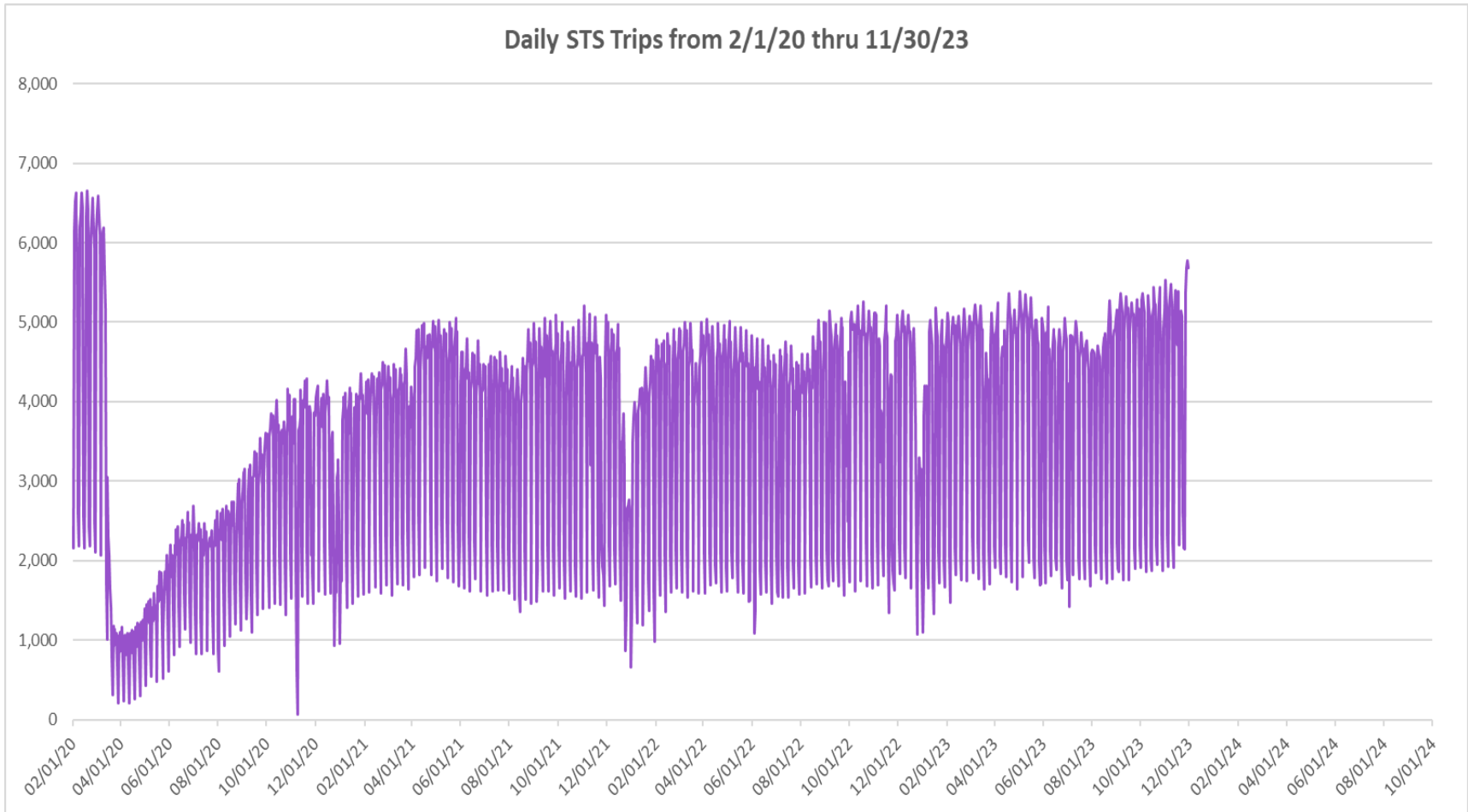
Measure	timeline	Ambulatory	Wheelchair	Total Clients (*)
<b>Average Weekday</b>	Nov-23	4,261	833	<b>5,094</b>
<b>Average Saturday</b>	Nov-23	1,903	411	<b>2,314</b>
<b>Average Sunday</b>	Nov-23	1,737	420	<b>2,157</b>
<b>Total Monthly</b>	<b>Nov-23</b>	<b>105,785</b>	<b>21,240</b>	<b>127,025</b>
<b>Average Weekday</b>	Nov-22	3,701	802	<b>4,503</b>
<b>Average Saturday</b>	Nov-22	1,686	380	<b>2,067</b>
<b>Average Sunday</b>	Nov-22	1,408	342	<b>1,750</b>
<b>Total Monthly</b>	<b>Nov-22</b>	<b>91,514</b>	<b>20,064</b>	<b>111,578</b>
<b>Average Weekday</b>	Nov-21	3,664	808	<b>4,472</b>
<b>Average Saturday</b>	Nov-21	1,607	387	<b>1,995</b>
<b>Average Sunday</b>	Nov-21	1,337	342	<b>1,680</b>
<b>Total Monthly</b>	<b>Nov-21</b>	<b>90,067</b>	<b>20,222</b>	<b>110,289</b>
<b>% Change Current vs. November 2022 Weekday</b>		15.1%	3.9%	13.1%
<b>% Change Current vs. November 2022 Saturday</b>		12.9%	8.2%	12.0%
<b>% Change Current vs. November 2022 Sunday</b>		23.4%	22.7%	23.3%
<b>% Change Current vs. November 2022 Month Total</b>		<b>15.6%</b>	<b>5.9%</b>	<b>13.8%</b>
<b>% Change Current vs. November 2021 Weekday</b>		16.3%	3.2%	13.9%
<b>% Change Current vs. November 2021 Saturday</b>		18.4%	6.2%	16.0%
<b>% Change Current vs. November 2021 Sunday</b>		29.9%	22.6%	28.4%
<b>% Change Current vs. November 2021 Month Total</b>		<b>17.5%</b>	<b>5.0%</b>	<b>15.2%</b>

(\*) Trip count data provided by STS contractor.

## TOTAL MONTHLY AND AVERAGE WEEKDAY RIDERSHIP YEAR OVER YEAR COMPARISON CHARTS – SPECIAL TRANSPORTATION SERVICES (S.T.S.)



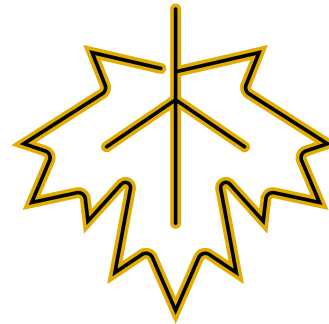
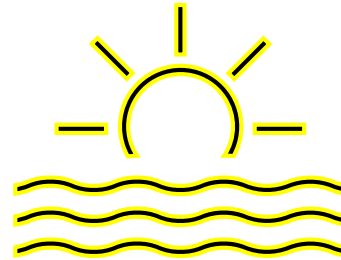
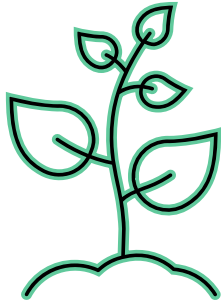
## DAILY STS RIDERSHIP SINCE FEBRUARY 1, 2020



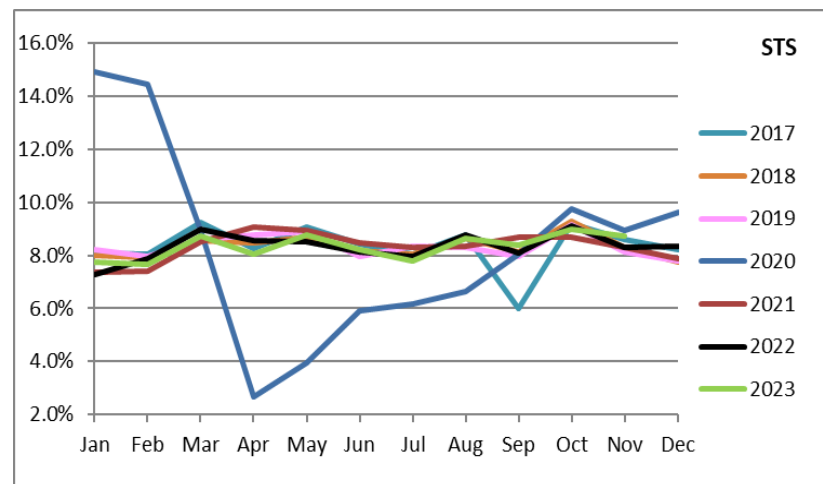
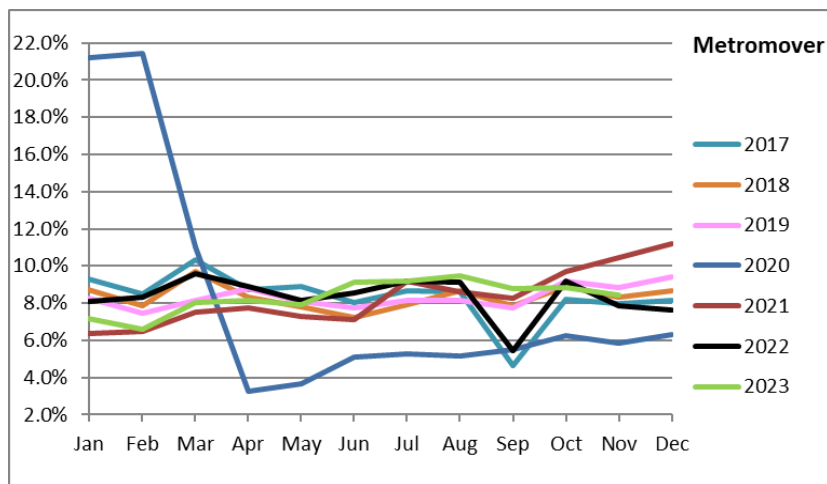
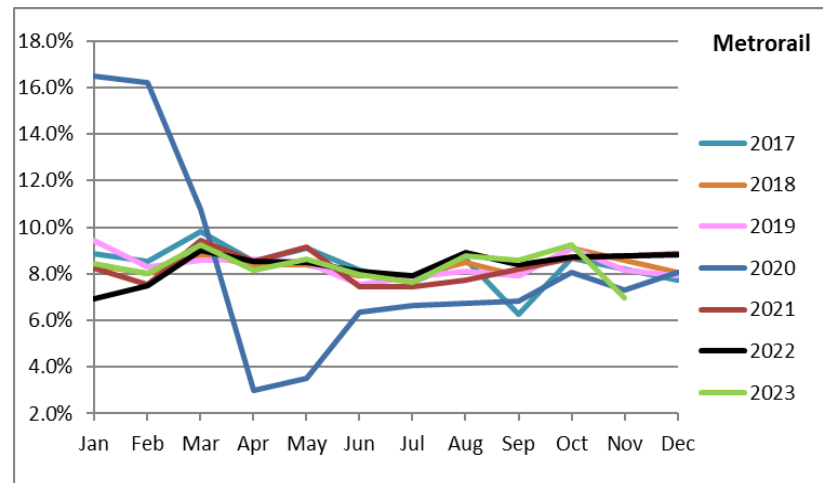
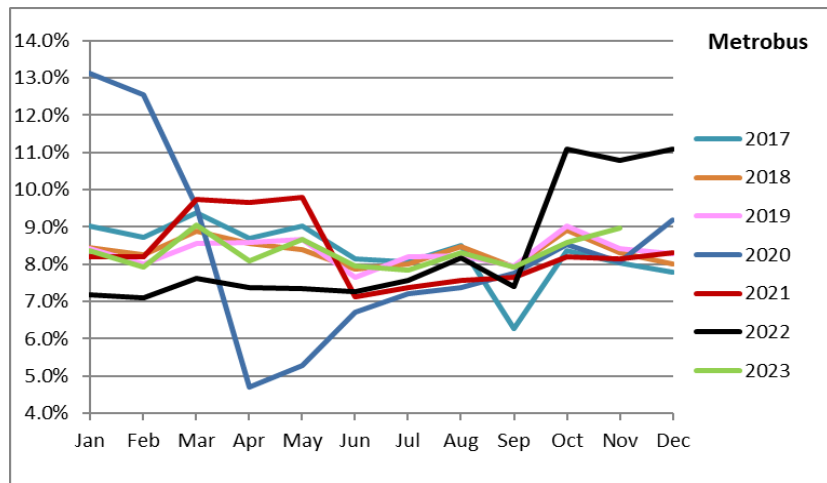
- (1) There was no service (for any of the four modes) on 9/28/22 as a result of Hurricane Ian.
- (2) The dip at the start of the second week of November 2020 is due to Hurricane Eta.
- (3) Periodic (weekly) variations are prominent, since weekday ridership is almost always significantly higher than weekend or holiday ridership.



# Ridership Seasonality



# RIDERSHIP SEASONALITY – PERCENT RIDERSHIP SHARE BY MONTH AND CALENDAR YEAR FOR EACH MODE



Note: the prominent dips seen in the fall of 2017 and beginning in the spring of 2020 are due to Hurricane Irma and the SARS-CoV-2 pandemic, respectively. Reductions in Bus and Rail ridership share seen beginning in June 2021 are due to reinstatement of fares as well changes in reporting tools and datasets, as discussed earlier in this report. The prominent peaks on Metrobus seen beginning October 2022 are due from a changeover from farebox counts to ridership obtained from new automatic passenger counter (APC) technology.