



TRANSPORTATION AND PUBLIC WORKS

RIDERSHIP TECHNICAL REPORT

Division of Performance and Materials Management



Table of Contents

<i>Table of Contents</i>	2-3
All Modes Overview	4
Total Monthly Weekday, Saturday and Sunday Monthly Boardings By Mode	5
Average Weekday, Saturday and Sunday Boardings by Mode	6
Metrobus Total Monthly Ridership Comparisons by Fiscal Year	7
Metrorail Total Monthly Ridership Comparisons by Fiscal Year	8
Metromover Total Monthly Ridership Comparisons by Fiscal Year	9
STS Total Monthly Ridership Comparisons by Fiscal Year	10
All-Modes Combined Total Monthly Ridership Comparisons By Fiscal Year	11
All Modes Combined Total Monthly and Average Weekday Ridership – Year over Year Comparison Charts	12
Average Weekday Ridership – Modal Splits	13
Daily Ridership for All Modes Combined since 2/1/20	14
Metrobus	15
Better Bus Network (BBN, 11/13/2023 Lineup) Bus Route Changes, Pt 1 and Pt 2	16-17
Metrobus Average Weekday Boardings by Route	18-20
Metrobus Average Saturday Boardings by Route	21-22
Metrobus Average Sunday Boardings by Route	23-24
Metrobus Monthly Total Boardings by Route	25-27
Year-over-Year Bus Ridership by Route Service Type	28-29
Bus Routes as Ranked by Percentage of Average Weekday Ridership	30
Metrobus Cumulative Percentage Average Weekday Ridership Share by Route (Top 75%)	31
Total Monthly and Average Weekday Bus Ridership – Year over Year Comparison Charts	32
Bus “Top 10 / Bottom 10” Bus Routes Sets Average Weekday Ridership Performance – Year-over-Year Comparisons	33
Bus “Top 10 / Bottom 10” Bus Routes Sets Average Weekday Ridership Performance – Month-over-Month Comparisons	34
Daily Metrobus Ridership since 2/1/20	35
Metrobus Parking Patronage Summary	36

Table of Contents (continued)

Metrorail	37
Metrorail Average Weekday Boardings by Station	38
Metrorail Average Saturday Boardings by Station	39
Metrorail Average Sunday Boardings by Station	40
Metrorail Total Monthly Boardings by Station	41
Metrorail Cumulative Percentage Average Weekday Ridership Share	42
Total Monthly and Average Weekday Rail Ridership – Year over Year Comparison Charts	43
“Top 5 / Bottom 5” Stations Average Weekday Ridership Performance	44
Daily Metrorail Ridership since 2/1/20	45
Metrorail Parking Patronage Summary	46
Metromover	47
Monthly and Average Daily Mover Boardings by Station	48
Metromover Cumulative Percentage Average Weekday Ridership Share	49
Total Monthly and Average Weekday Mover Ridership – Year over Year Comparison Charts	50
“Top 5 / Bottom 5” Stations Average Weekday Ridership Performance	51
Daily Metromover Ridership since 2/1/20	52
Special Transportation Services (STS)	53
STS Monthly and Average Daily Boardings	54
Total Monthly and Average Weekday STS Ridership – Year over Year Comparison Charts	55
Daily STS Ridership since 2/1/20	56
Ridership Seasonality	57
Ridership Seasonality – Percent Ridership Share by Month and Calendar Year for Each Mode	58

All Modes Overview



TOTAL MONTHLY WEEKDAY, SATURDAY AND SUNDAY BOARDINGS BY MODE
December 2023

TRAVEL MODE	MONTH'S TOTAL WEEKDAYS RIDERSHIP	MONTH'S TOTAL SATURDAYS RIDERSHIP	MONTH'S TOTAL SUNDAYS RIDERSHIP	TOTAL MONTHLY RIDERSHIP	% CHANGE vs Dec 2022 TOTAL MONTH RIDERSHIP
METROBUS (1), (2)	4,417,982	784,543	654,532	5,857,057	25.2%
METRORAIL (2)	946,009	123,525	107,738	1,177,272	10.7%
METROMOVER	429,405	82,511	104,539	616,455	44.7%
STS PARATRANSIT (3)	104,311	12,528	13,254	130,093	16.1%
TOTAL	5,897,707	1,003,107	880,063	7,780,877	23.9%

- (1) Bus ridership reporting through automatic passenger counters coupled with a new enhanced sensor system resumed on October 1, 2022.
- (2) Metrorail fares resumed on June 1, 2021, following a 14-month period of fare-free rides as a result of the SARS-CoV-2 pandemic. The NextFare System faregate data replaced the video data as ridership data of record starting on that date, until free fares were reinstated for the Better Bus Network launch on 11/13/23.
- (3) Paratransit ridership data as reported by the contractor and subsequently audited by the Department.

AVERAGE WEEKDAY, SATURDAY AND SUNDAY BOARDINGS BY MODE
December 2023

Travel Mode	Average Weekday	Average Saturday	Average Sunday	% Change Dec 2022 Weekday	% Change Dec 2022 Saturday	% Change Dec 2022 Sunday
METROBUS	220,953	156,909	109,089	26.1%	46.5%	50.5%
METRORAIL	48,271	25,275	19,225	13.4%	30.3%	41.2%
METROMOVER	22,998	17,697	19,292	54.5%	39.1%	108.7%
STS PARATRANSIT	5,216	2,506	2,209	20.3%	21.4%	39.1%
Totals	297,438	202,387	149,814	25.5%	43.2%	54.6%

(*) Average ridership is calculated and published only for those days and stations or routes with nontrivial amounts of reported data.

METROBUS TOTAL MONTHLY RIDERSHIP COMPARISONS BY FISCAL YEAR

Bus Month	FY 19	FY 20	Variance 19 to 20	FY 21	FY 22	FY 23	FY 24	Variance 19 to 23	Variance 22 to 23	Variance 19 to 24	Variance 23 to 24
Oct	4,554,886	4,507,012	-1.1%	2,805,139	3,081,157	4,679,725	4,912,151	2.7%	51.9%	7.8%	5.0%
Nov	4,245,535	4,197,225	-1.1%	2,651,290	3,056,726	4,549,666	5,135,172	7.2%	48.8%	21.0%	12.9%
Dec	4,081,581	4,126,990	1.1%	3,022,530	3,123,883	4,677,460	5,857,057	14.6%	49.7%	43.5%	25.2%
Jan	4,195,911	4,316,998	2.9%	3,082,746	3,029,055	4,785,128		14.0%	58.0%		
Feb	3,994,019	4,123,083	3.2%	3,076,966	2,995,789	4,526,317		13.3%	51.1%		
Mar	4,266,768	3,136,162	-26.5%	3,660,639	3,218,562	5,183,872		21.5%	61.1%		
Apr	4,291,135	1,544,316	-64.0%	3,625,048	3,105,797	4,618,302		7.6%	48.7%		
May	4,330,922	1,734,609	-59.9%	3,683,343	3,097,574	4,953,197		14.4%	59.9%		
Jun	3,823,863	2,210,725	-42.2%	2,672,570	3,064,059	4,545,050		18.9%	48.3%		
Jul	4,094,906	2,366,749	-42.2%	2,769,907	3,189,994	4,484,458		9.5%	40.6%		
Aug	4,109,613	2,422,014	-41.1%	2,843,552	3,442,006	4,756,063		15.7%	38.2%		
Sep	3,971,220	2,546,923	-35.9%	2,877,110	3,123,572	4,525,426		14.0%	44.9%		
FY Total	49,960,359	37,232,806	-25.5%	36,770,840	37,528,174	56,284,664		12.7%	50.0%		

METRORAIL TOTAL MONTHLY RIDERSHIP COMPARISONS BY FISCAL YEAR

Rail Month	FY 19	FY 20	Variance 19 to 20	FY 21	FY 22	FY 23	FY 24	Variance 19 to 23	Variance 22 to 23	Variance 19 to 24	Variance 23 to 24
Oct	1,757,225	1,643,166	-6.5%	769,525	844,383	1,053,191	1,237,096	-40.1%	24.7%	-29.6%	17.5%
Nov	1,656,929	1,469,448	-11.3%	699,492	850,881	1,055,066	935,121	-36.3%	24.0%	-43.6%	-11.4%
Dec	1,553,804	1,433,928	-7.7%	769,194	860,436	1,063,096	1,177,272	-31.6%	23.6%	-24.2%	10.7%
Jan	1,708,695	1,576,340	-7.7%	799,119	832,924	1,127,340		-34.0%	35.3%		
Feb	1,501,458	1,549,118	3.2%	730,792	905,162	1,072,791		-28.6%	18.5%		
Mar	1,554,851	1,027,319	-33.9%	917,097	1,084,978	1,239,336		-20.3%	14.2%		
Apr	1,559,446	287,803	-81.5%	827,414	1,027,139	1,087,816		-30.2%	5.9%		
May	1,531,597	337,696	-78.0%	887,111	1,023,322	1,151,819		-24.8%	12.6%		
Jun	1,359,966	608,758	-55.2%	723,469	975,477	1,066,861		-21.6%	9.4%		
Jul	1,419,158	632,964	-55.4%	722,159	953,331	1,022,937		-27.9%	7.3%		
Aug	1,463,646	641,275	-56.2%	749,578	1,076,490	1,174,138		-19.8%	9.1%		
Sep	1,427,726	654,244	-54.2%	795,749	1,012,331	1,146,864		-19.7%	13.3%		
FY Total	18,494,501	11,862,059	-35.9%	9,390,699	11,446,854	13,261,255		-28.3%	15.9%		

METROMOVER TOTAL MONTHLY RIDERSHIP COMPARISONS BY FISCAL YEAR

Mover Month	FY 19	FY 20	Variance 19 to 20	FY 21	FY 22	FY 23	FY 24	Variance 19 to 23	Variance 22 to 23	Variance 19 to 24	Variance 23 to 24
Oct	790,533	831,234	5.1%	250,044	389,065	514,308	614,479	-34.9%	32.2%	-22.3%	19.5%
Nov	735,198	799,632	8.8%	232,422	418,929	439,150	584,887	-40.3%	4.8%	-20.4%	33.2%
Dec	767,239	849,832	10.8%	251,019	450,320	426,073	616,455	-44.5%	-5.4%	-19.7%	44.7%
Jan	746,728	847,773	13.5%	255,968	451,566	498,566		-33.2%	10.4%		
Feb	675,160	855,398	26.7%	260,332	465,968	459,264		-32.0%	-1.4%		
Mar	737,814	441,200	-40.2%	302,502	535,857	558,396		-24.3%	4.2%		
Apr	795,696	130,549	-83.6%	310,772	495,982	565,943		-28.9%	14.1%		
May	734,645	146,454	-80.1%	292,922	455,120	547,948		-25.4%	20.4%		
Jun	701,318	203,637	-71.0%	286,145	477,286	632,423		-9.8%	32.5%		
Jul	739,814	210,596	-71.5%	368,847	512,094	635,954		-14.0%	24.2%		
Aug	739,785	205,995	-72.2%	344,319	508,359	657,267		-11.2%	29.3%		
Sep	699,879	219,696	-68.6%	331,915	305,185	610,810		-12.7%	100.1%		
FY Total	8,863,809	5,741,996	-35.2%	3,487,207	5,465,731	6,546,102		-26.1%	19.8%		

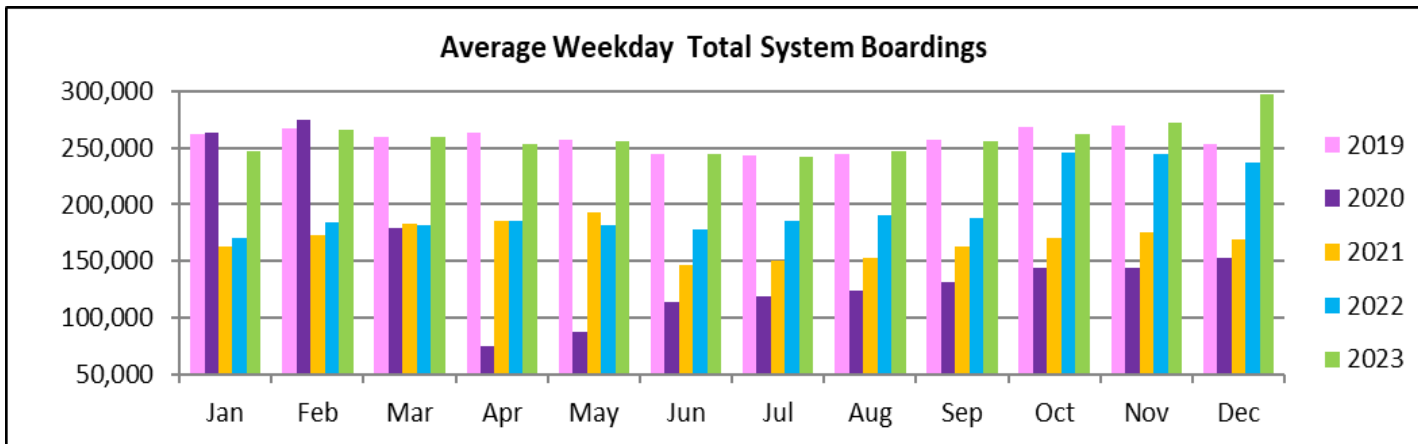
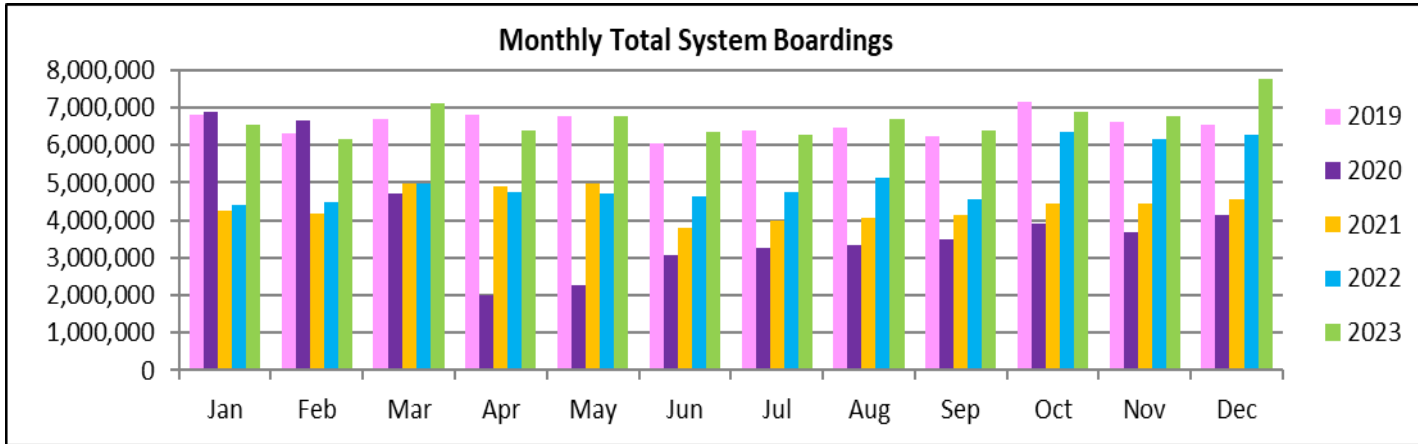
SPECIAL TRANSPORTATION SERVICES (STS) TOTAL MONTHLY RIDERSHIP COMPARISONS BY FISCAL YEAR

STS Month	FY 19	FY 20	Variance 19 to 20	FY 21	FY 22	FY 23	FY 24	Variance 19 to 23	Variance 22 to 23	Variance 19 to 24	Variance 23 to 24
Oct	162,564	162,704	0.1%	97,388	115,122	122,189	130,958	-24.8%	6.1%	-19.4%	7.2%
Nov	145,653	144,366	-0.9%	89,387	110,289	111,578	127,025	-23.4%	1.2%	-12.8%	13.8%
Dec	136,110	138,642	1.9%	96,366	104,496	112,019	130,093	-17.7%	7.2%	-4.4%	16.1%
Jan	146,268	149,114	1.9%	97,928	97,541	112,632		-23.0%	15.5%		
Feb	141,396	144,392	2.1%	98,285	105,706	111,748		-21.0%	5.7%		
Mar	153,191	89,634	-41.5%	112,930	120,718	126,819		-17.2%	5.1%		
Apr	155,808	26,877	-82.7%	120,122	114,912	116,882		-25.0%	1.7%		
May	158,665	39,654	-75.0%	118,636	114,505	127,782		-19.5%	11.6%		
Jun	141,320	59,093	-58.2%	112,397	109,054	119,527		-15.4%	9.6%		
Jul	148,232	61,765	-58.3%	110,059	107,188	113,623		-23.3%	6.0%		
Aug	147,331	66,563	-54.8%	110,766	117,941	125,510		-14.8%	6.4%		
Sep	141,387	80,346	-43.2%	115,406	108,788	122,065		-13.7%	12.2%		
FY Total	1,777,925	1,163,150	-34.6%	1,279,670	1,326,260	1,422,374		-20.0%	7.2%		

ALL-MODES COMBINED TOTAL MONTHLY RIDERSHIP COMPARISONS BY FISCAL YEAR

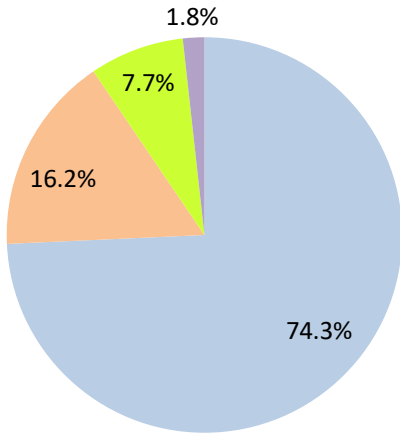
All Modes													
Month	FY 19	FY 20	FY 21	FY 22	FY 23	FY 24	19 TO 20	20 TO 21	21 TO 22	22 TO 23	19 TO 23	23 TO 24	19 TO 24
Oct	7,265,208	7,144,116	3,922,096	4,429,727	6,369,413	6,894,684	-1.7%	-45.1%	12.9%	43.8%	-12.3%	8.2%	-5.1%
Nov	6,783,315	6,610,671	3,672,591	4,436,825	6,155,460	6,782,205	-2.5%	-44.4%	20.8%	38.7%	-9.3%	10.2%	0.0%
Dec	6,538,734	6,549,392	4,139,109	4,539,135	6,278,648	7,780,877	0.2%	-36.8%	9.7%	38.3%	-4.0%	23.9%	19.0%
Jan	6,797,602	6,890,225	4,235,761	4,411,086	6,523,666		1.4%	-38.5%	4.1%	47.9%	-4.0%		
Feb	6,312,033	6,671,991	4,166,375	4,472,625	6,170,120		5.7%	-37.6%	7.4%	38.0%	-2.2%		
Mar	6,712,624	4,694,315	4,993,168	4,960,115	7,108,423		-30.1%	6.4%	-0.7%	43.3%	5.9%		
Apr	6,802,085	1,989,545	4,883,356	4,743,830	6,388,943		-70.8%	145.5%	-2.9%	34.7%	-6.1%		
May	6,755,829	2,258,413	4,982,012	4,690,521	6,780,746		-66.6%	120.6%	-5.9%	44.6%	0.4%		
Jun	6,026,467	3,082,213	3,794,581	4,625,876	6,363,861		-48.9%	23.1%	21.9%	37.6%	5.6%		
Jul	6,402,110	3,272,074	3,970,972	4,762,607	6,256,972		-48.9%	21.4%	19.9%	31.4%	-2.3%		
Aug	6,460,375	3,335,847	4,048,215	5,144,796	6,712,978		-48.4%	21.4%	27.1%	30.5%	3.9%		
Sep	6,240,212	3,501,209	4,120,180	4,549,876	6,405,165		-43.9%	17.7%	10.4%	40.8%	2.6%		
FY Total	79,096,594	56,000,011	50,928,416	55,767,019	77,514,395		-29.2%	-9.1%	9.5%	39.0%	-2.0%		

TOTAL MONTHLY AND AVERAGE WEEKDAY RIDERSHIP YEAR OVER YEAR COMPARISON CHARTS – ALL MODES COMBINED



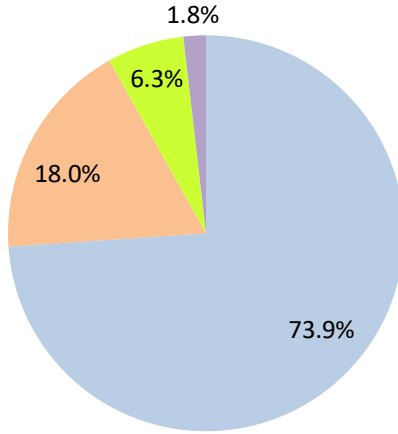
AVERAGE WEEKDAY RIDERSHIP - MODAL SPLITS

December 2023



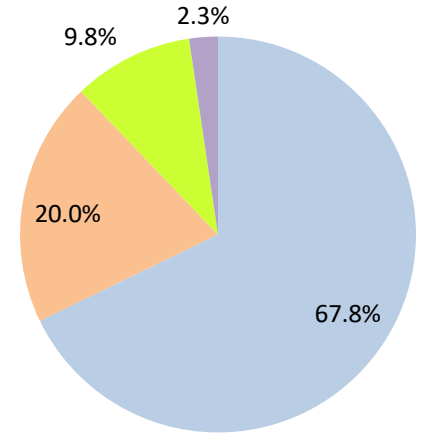
boardings

December 2022



boardings

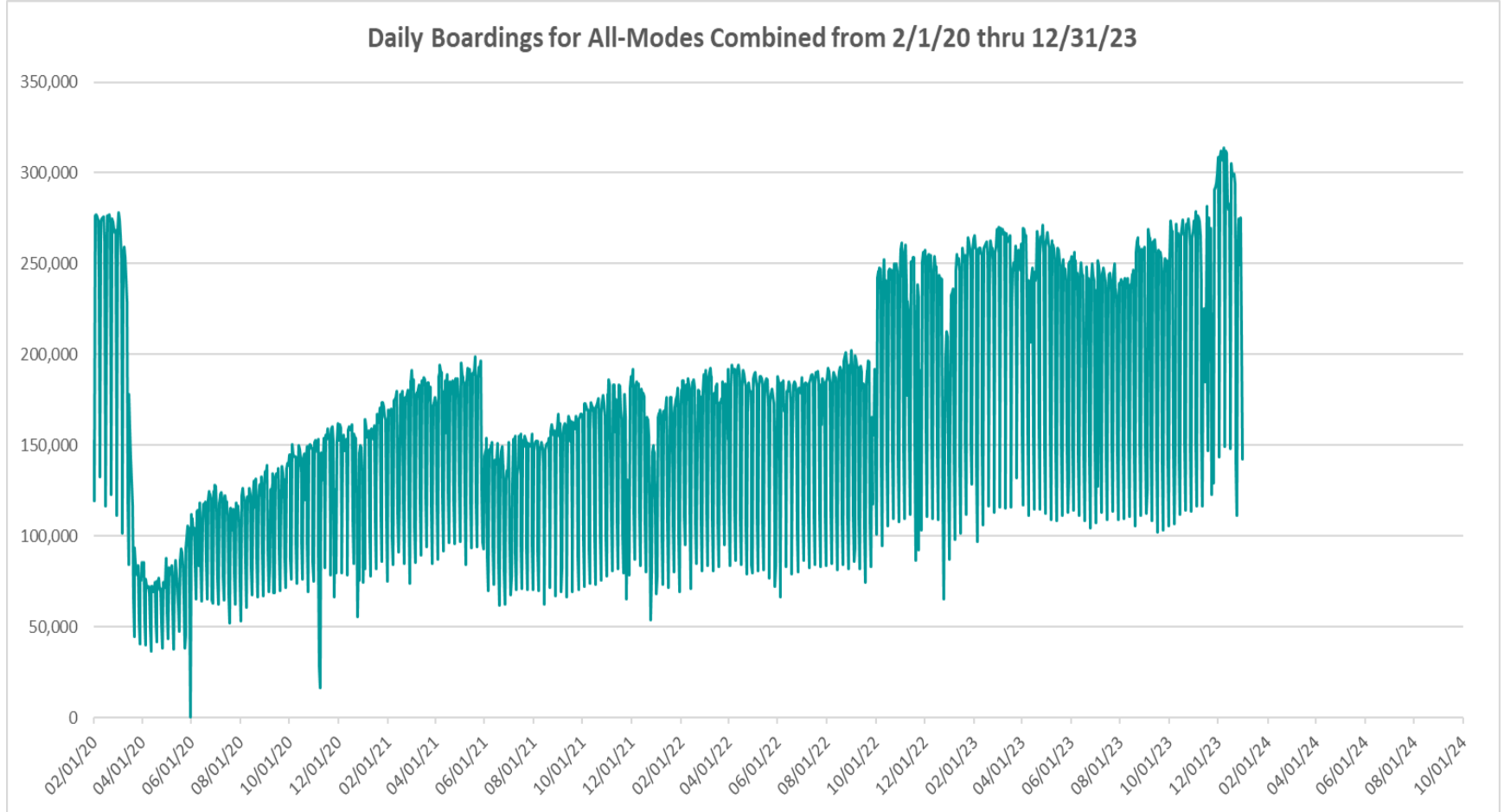
December 2021



boardings



DAILY RIDERSHIP FOR ALL MODES COMBINED SINCE FEBRUARY 1, 2020



- (1) There was no Metrobus, Metrorail and Metromover service on 5/31/20, as a safety precaution, and no service for any of the four modes on 9/28/22 as a result of Hurricane Ian..
- (2) The dip at the start of the second week of December 2020 is due to Hurricane Eta.
- (3) Daily variations from October 2022 onward are, for the Bus portion, estimated from reports made available by the Bus APC data vendor..
- (4) The reduction seen beginning 6/1/21 is partly due to the resumption of fares for bus and rail, and partly the result of having resumed reporting Cubic farebox data rather than bus APC counts, as well as Cubic rail faregate counts instead of video camera counts on that date. The jump seen at the start of December 2022 is due to the return to APC bus ridership counts reporting begun on 10/1/22.
- (5) The marked peak in Dec 2023 is attributable to the Better Bus Network launch period and attendant free fares.
- (6) Periodic (weekly) variations are prominent, since weekday ridership is almost always significantly higher than weekend or holiday ridership.

Metrobus



Better Bus Network (BBN, 11/13/2023 lineup) Bus Route Changes (Pt 1)

The listings below and on the following page are to serve as an aid in identifying individual routes for comparison of ridership data between periods prior to and following the launch of the BBN on 11/13/2023. In November 2023, both old and new route numbers appear in data tables, since the launch took place near mid-month; beginning with December 2023, only the current (BBN) numbering system appear in tables, to allow for direct comparisons.

BBN Numbering Changes:

Contracted **Route 1** was renumbered **Route 97**

Directly operated **Route 33** was renumbered **Route 103** (new, recycled number, not the same as former **Route 103 - C**)

Directly operated **Route 51** (Flagler MAX) was renumbered **Route 211** (recycled number, not the same as the OVERTOWN CIRCULATOR)

Contracted **Route 71** was renumbered **Route 107** (new, recycled number, not the same as **Route 107 - G** further below) and became directly operated

Directly operated **Route 79** was renumbered **Route 279** (79th Steet MAX)

Directly operated **Route 93** was renumbered **Route 203** (Biscayne MAX)

Directly operated **Route 99** was renumbered **Route 199**

Contracted **Route 101 - A** was renumbered **Route 15**

Directly operated **Route 102 - B** was renumbered **Route 26** (under the BBN's first phase, 07/24/2023 lineup)

Directly operated **Route 107 - G** (old, not the same as the **Route 107** appearing above) was renumbered **Route 125**

Directly operated **Route 112 - L** was renumbered **Route 79** (recycled number, not the same as the **Route 79** appearing above)

Directly operated **Route 120** was renumbered **Route 100**

Directly operated **Route 200** (CUTLER BAY LOCAL) was renumbered **Route 500** (recycled number, not the same as the **Route 500** further below)

Contracted **Route 210** was renumbered **Route 510** (SKYLAKE CIRCULATOR)

Contracted **Route 246** was renumbered **Route 401** (NORTH OWL)

Contracted **Route 248** (Princeton Circulator) was renumbered **Route 70** (recycled number, not the same as former **Route 70**)

Directly operated **Route 252** became contractor-operated, under the new name and number **Route 152**

Directly operated **Route 500** was renumbered **Route 400** (SOUTH OWL)

*The above routes, along with many others who retained their numbering, underwent modifications in various ways (realignment, new headways, days of operation, etc., some major), as part of the BBN and its resulting lineup. Details for each DTPW Bus route are provided in the Miami-Dade County website. (Directly operated **Route 2** became contractor-operated but kept its number).*

Better Bus Network (BBN, 11/13/2023 lineup) Bus Route Changes (Pt 2)

BBN New Routes and Numbers:

Two new routes with new numbering were created to support the Better Bus Network:

Route 14 corresponds to a newly created route

Route 20 corresponds to a newly created route

BBN Eliminated Routes:

The following routes were discontinued, as part of the Better Bus Network realignments:

Route 10

Route 16

Route 19

Route 29

Route 31 (BUSWAY LOCAL)

Route 42

Route 46 (LIBERTY CITY CONNECTION)

Route 57

Route 82 (WESTCHESTER CIRCULATOR)

Route 103 - C (old, previously used numbering, not the same as the Route 103 in the list on the previous page)

Route 211 (OVERTOWN CIRCULATOR, previously used numbering, not the same as the Route 211 in the list on the previous page)

Route 105 - E

Route 108 - H

Route 110 - J

Route 113 - M

Route 115

Route 119 - S

Route 155 (BISCAYNE GARDENS CIRCULATOR)

Route 202 (LITTLE HAITI CONNECTION)

Route 212 (SWEETWATER CIRCULATOR)

Route 217 (BUNCHE PARK CIRCULATOR)

Route 238 (EAST-WEST CONNECTION)

Route 241 (TUTTLE LIMITED)

Route 254 (BROWNSVILLE CIRCULATOR)

Route 267 (LUDLAM LIMITED)

Route 277 (7th AVENUE MAX)

Route 286 (NORTH POINTE CIRCULATOR)

Route 297 (27th AVENUE ORANGE MAX)

Previously Eliminated Routes:

The following five express routes were suspended soon after the start of the SARS-CoV-2 pandemic, and never reinstated; their ridership appears in some of the tables in this report, as then-components of the reported bus system performance measures:

Route 175 (NW MIAMI-DADE EXPRESS)

Route 195 EXPRESS – BROWARD BLVD

Route 196 EXPRESS – BROWARD BLVD-CIVIC CENTER

Route 295 EXPRESS – SHERIDAN STREET

Route 296 EXPRESS – SHERIDAN STREET-CIVIC CENTER

The preceding listings are not exhaustive, and the reader is referred to the Miami-Dade County website for further BBN details or additional changes.

METROBUS AVERAGE WEEKDAY BOARDINGS BY ROUTE (†, ††)

Route	Average Weekday	Average Weekday	Percent Change	Average Weekday	Percent Change	Average Weekday	Percent Change	Average Weekday	Percent Change
	weekdays Dec-23	Nov-23	MOM	Dec-22	YOY	Feb-20	Current vs Feb-20	Dec-19	YO4Y
2	2,243	2,120	5.8%	2,520	-11.0%	3,102	-27.7%	2,312	-3.0%
3	9,503	7,646	24.3%	5,629	68.8%	5,137	85.0%	4,834	96.6%
7	4,748	4,370	8.6%	3,780	25.6%	3,501	35.6%	2,974	59.7%
8	5,849	5,092	14.9%	4,486	30.4%	3,909	49.6%	3,455	69.3%
9	12,886	10,105	27.5%	5,841	120.6%	5,528	133.1%	5,192	148.2%
10		973		2,274		2,482		2,077	
11	13,029	11,155	16.8%	8,338	56.3%	7,292	78.7%	6,558	98.7%
12	3,448	3,171	8.7%	2,817	22.4%	2,779	24.1%	2,471	39.5%
14	1,361	682	99.5%						
15	411	289	42.4%	260	58.0%	177	132.3%	171	140.2%
16		754		1,974		1,862		1,770	
17	7,316	5,517	32.6%	3,683	98.6%	3,878	88.6%	3,542	106.5%
19		684		1,433		1,542		1,312	
20	4,783	2,576	85.7%						
21	2,587	2,357	9.8%	1,712	51.1%	1,817	42.4%	1,775	45.8%
22	2,964	3,451	-14.1%	4,194	-29.3%	3,640	-18.6%	3,425	-13.5%
24-CORAL WAY LIMITED	3,027	2,635	14.9%	2,220	36.4%	1,340	126.0%	1,650	83.5%
26	2,477	2,243	10.5%	2,110	17.4%	1,778	39.3%	1,581	56.7%
27	10,198	8,649	17.9%	6,704	52.1%	6,972	46.3%	6,376	59.9%
29		191		460		534		652	
31-BUSWAY LOCAL				1,080		1,089		1,040	
32	2,018	2,277	-11.3%	2,559	-21.1%	2,390	-15.5%	2,166	-6.8%
34 TRANSITWAY EXPRESS	1,694	1,629	4.0%	1,234	37.3%	2,008	-15.6%	1,774	-4.5%
35	2,627	2,634	-0.3%	2,492	5.4%	2,421	8.5%	2,335	12.5%
36	7,259	5,084	42.8%	2,648	174.1%	2,536	186.2%	2,408	201.4%
37	5,359	4,377	22.5%	3,511	52.7%	3,273	63.7%	3,085	73.7%
38 TRANSITWAY MAX	8,271	6,597	25.4%	5,658	46.2%	6,361	30.0%	6,285	31.6%
39 TRANSITWAY EXPRESS	793	718	10.5%			893	-11.2%	795	-0.3%
40	2,027	2,120	-4.4%	2,084	-2.7%	1,772	14.4%	1,558	30.1%
42		367		1,024		820		805	
46 - LIBERTY CITY CONN.		8		21		41		51	
52	1,836	1,583	16.0%	1,244	47.7%	1,261	45.6%	1,131	62.3%
54	3,337	3,204	4.1%	2,963	12.6%	2,940	13.5%	2,828	18.0%
56	613	505	21.4%	324	88.9%	354	73.2%	374	63.8%
57		187		460		433		382	
62	3,304	2,797	18.1%	1,756	88.2%	1,815	82.0%	1,792	84.4%
70	316	241	31.3%	136	132.1%	135	135.1%	37	764.5%

(†) In this table and those which follow, "YOY" stands for "year-over-year", "MOM" for "month-over-month" and "YO4Y" for "year over four years", i.e., current month vs 12 months prior, one month prior, and 48 months prior, respectively. The February 2020 numbers serve as a pre-pandemic benchmark.

METROBUS AVERAGE WEEKDAY BOARDINGS BY ROUTE

Route	Average Weekday	Average Weekday	Percent Change	Average Weekday	Percent Change	Average Weekday	Percent Change	Average Weekday	Percent Change
	weekdays Dec-23	Nov-23	MOM	Dec-22	YOY	Feb-20	Current vs Feb-20	Dec-19	YO4Y
72	980	786	24.7%	577	70.0%	781	25.4%	703	39.5%
73	1,666	2,109	-21.0%	2,785	-40.2%	2,124	-21.6%	1,837	-9.3%
75	3,256	2,465	32.1%	1,257	159.1%	1,429	127.9%	1,426	128.4%
77	12,463	10,823	15.1%	8,688	43.5%	7,129	74.8%	7,066	76.4%
79	10,218	8,944	14.3%	8,718	17.2%	7,636	33.8%	7,458	37.0%
82 - WESTCHESTER CIRC		24		54		62		66	
87	2,611	2,193	19.0%	1,842	41.7%	1,499	74.1%	1,395	87.2%
88	2,243	2,311	-3.0%	2,359	-4.9%	2,076	8.0%	2,023	10.9%
95-EXPRESS GOLDEN GLADES	1,277	1,149	11.1%	934	36.8%	1,690	-24.4%	1,625	-21.4%
97	208	197	5.8%	211	-1.1%	184	13.3%	304	-31.4%
100	20,577	13,972	47.3%	6,939	196.6%	6,667	208.6%	6,551	214.1%
103 - C						463		442	
103	2,451	2,181	12.4%	1,773	38.3%	1,687	45.3%	1,604	52.9%
104	1,155	1,091	5.9%	778	48.5%	837	38.0%	800	44.5%
105 - E		532		1,459		1,287		1,216	
107	2,308	1,717	34.4%	641	260.0%	711	224.8%	628	267.7%
108 - H		206		728		473		456	
110 - J		1,238		3,069		2,508		2,563	
113 - M		345		731		866		787	
115		56		140		180		165	
119 - S		3,702		10,462		8,970		8,640	
125	4,637	3,356	38.2%	1,859	149.5%	1,713	170.7%	1,599	190.0%
132 -TRI-RAIL DORAL SHUTTLE	51	48	6.3%	47	6.9%	16	225.0%	3	1590.0%
135	2,098	1,881	11.5%	1,355	54.9%	1,399	49.9%	1,280	63.9%
136	175	197	-11.2%	149	17.5%	126	38.6%	118	48.1%
137-WEST DADE CONNECTION	2,746	2,409	14.0%	2,003	37.1%	1,626	68.9%	1,496	83.5%
150-MIAMI BEACH AIRPORT EXPRESS	1,969	2,118	-7.0%	2,245	-12.3%	1,867	5.5%	1,667	18.2%
152	430	667	-35.5%	911	-52.7%	851	-49.4%	771	-44.2%
155 - BISCAYNE GARDENS CIRC		20		38		44		48	
175 - NW MIAMI-DADE EXPRESS						33		16	
183	5,480	4,584	19.6%	3,318	65.1%	3,149	74.0%	3,000	82.6%
195 EXPRESS - BROWARD BLVD						372		327	
196 EXPRESS - SHERIDAN ST						383		333	
199	2,223	2,009	10.7%	1,577	41.0%	1,473	51.0%	1,367	62.6%
202 - LITTLE HAITI CONN		43		76		140		134	
203 - BISCAYNE MAX	1,583	2,286	-30.8%	3,678	-57.0%	3,334	-52.5%	3,171	-50.1%

METROBUS AVERAGE WEEKDAY BOARDINGS BY ROUTE

Route	Average Weekday	Average Weekday	Percent Change	Average Weekday	Percent Change	Average Weekday	Percent Change	Average Weekday	Percent Change
	Dec-23	Nov-23	MOM	Dec-22	YOY	Feb-20	Current vs Feb-20	Dec-19	YO4Y
weekdays									
204 KILLIAN MAX	621	619	0.2%	593	4.7%	1,071	-42.0%	844	-26.5%
207 (7th St)-LITTLE HAVANA CONN	2,175	1,904	14.2%	1,694	28.4%	1,489	46.1%	1,532	41.9%
208 (8th St)-LITTLE HAVANA CONN	2,152	1,778	21.1%	1,599	34.6%	1,308	64.6%	1,448	48.6%
211 OVERTOWN CIRCULATOR		32		92		58		72	
211 - FLAGLER MAX	2,009	2,484	-19.1%	3,663	-45.2%	3,109	-35.4%	2,938	-31.6%
212-SWEETWATER CIRC		11		21		15		56	
217 - BUNCHE PARK CIRC		240		52		97		69	
238-EAST/WEST CONN		32		617		449		448	
241 TUTTLE LIMITED		128		231					
254-BROWNSVILLE CIRC		2		6		19		19	
267-LUDLAM LIMITED		59		145		149		126	
272 SUNSET MAX (*)	369	383	-3.8%	334	10.4%	550	-33.0%	517	-28.6%
277-7TH AVENUE MAX		397		687		683		584	
279 - 79 STREET MAX	824	638	29.1%	526	56.6%	361	127.9%	388	112.1%
286-NORTH POINTE CIRC		32		86		97		94	
287-SAGA BAY MAX	404	343	17.7%	284	42.1%	358	12.8%	312	29.5%
288 KENDALL MAX	526	453	16.1%	457	15.2%	762	-31.0%	709	-25.8%
295						233		217	
296						215		196	
297-27th AVENUE ORANGE MAX		457		1,162		1,356		1,271	
301-DADE MONROE EXPRESS	1,199	1,042	15.0%	815	47.1%	841	42.5%	824	45.6%
302-CARD SOUND EXPRESS	108	103	3.9%	100	7.6%	86	24.6%	77	39.6%
338 - WEEKEND EXPRESS									
344	137	97	41.4%	50	172.2%	96	42.9%	102	34.9%
400 - SOUTH OWL	94	75	26.6%	76	24.1%	81	16.6%	42	127.5%
401 - NORTH OWL	60	52	16.4%	57	5.6%	94	-35.9%	101	-40.8%
500 - CUTLER BAY LOCAL	256	262	-2.5%	123	108.5%	158	62.0%	150	70.7%
510 - SKYLAKE CIRCULATOR (*)	392	375	4.5%	281	39.2%	282	38.9%	221	77.1%
836 EXPRESS	297	282	5.3%	218	36.4%				
837 EXPRESS	175	191	-8.3%	80	117.3%				
AHEPA SHUTTLE	18	18	0.0%	17	6.9%	21	-14.5%	18	1.4%
FEDERATION GARDENS SHUTTLE									
GREEN HILLS SHUTTLE	10	7	46.2%	5	100.0%	9	5.6%	8	25.0%
KINGS CREEK SHUTTLE	8	8	10.0%	13	-37.5%	13	-36.5%	19	-56.6%
ROBERT SHARP SHUTTLE	13	23	-44.4%	36	-64.1%	10	36.8%	6	105.3%
SIERRA LAKES SHUTTLE	19	18	8.6%	11	72.7%	45	-57.8%	26	-27.6%
Total	220,953	197,191	12.1%	175,158	26.1%	167,711	31.7%	157,487	40.3%

(*) To see which routes fully or partly operated under contract this month, please refer to the ranking table in Slide 30.

(1) Includes shuttles and those routes which were not run both years.

(2) Several express routes were suspended beginning at the end of March 2020, due to the SARS-CoV-2 pandemic, while other routes had alignment and schedule modifications made to them, in an ongoing effort to optimize service delivery.

METROBUS AVERAGE SATURDAY BOARDINGS BY ROUTE

Route	Average Saturday	Average Saturday	Percent Change	Average Saturday	Percent Change	Average Saturday	Percent Change	Average Saturday	Percent Change
	Dec-23	Nov-23	MOM	Dec-22	YOY	Feb-20	Current vs Feb-20	Dec-19	YO4Y
Saturdays									
2	1,131	1,381	-18.1%	1,563	-27.6%	1,616	-30.0%	1,527	-25.9%
3	8,596	6,767	27.0%	5,915	45.3%	5,229	64.4%	5,322	61.5%
7	2,887	2,481	16.4%	1,927	49.8%	1,887	53.0%	1,993	44.9%
8	3,340	2,794	19.6%	2,425	37.8%	2,027	64.8%	2,047	63.2%
9	8,641	6,079	42.1%	3,481	148.3%	3,034	184.8%	3,184	171.4%
10		948		1,891		1,896		1,779	
11	10,841	8,049	34.7%	6,512	66.5%	5,182	109.2%	5,418	100.1%
14	1,078	604	78.3%						
15	404	260	55.7%	35	1062.1%	71	471.2%	72	459.7%
16		855		1,753		1,566		1,558	
17	5,228	3,606	45.0%	2,285	128.9%	2,363	121.2%	2,463	112.3%
20	3,928	1,846	112.8%						
22	1,984	2,186	-9.2%	2,379	-16.6%	2,084	-4.8%	2,144	-7.4%
24-CORAL WAY LIMITED	2,382	1,810	31.6%	1,387	71.7%	1,165	104.4%	1,220	95.2%
26	1,364	1,234	10.6%	1,035	31.9%	851	60.3%	890	53.3%
27	7,276	5,491	32.5%	4,277	70.1%	4,034	80.4%	4,358	66.9%
31-BUSWAY LOCAL				966		896		832	
32	1,296	1,242	4.4%	1,127	15.1%	1,029	26.0%	1,103	17.5%
35	2,113	1,774	19.1%	1,500	40.9%	1,372	54.0%	1,227	72.3%
36	5,682	3,271	73.7%	1,548	267.0%	1,289	340.6%	1,399	306.3%
37	3,560	2,818	26.3%	2,097	69.8%	2,090	70.3%	2,255	57.9%
38 TRANSITWAY MAX	7,214	6,510	10.8%	4,364	65.3%	4,715	53.0%	5,108	41.2%
40	1,173	1,041	12.7%	734	59.8%	655	79.2%	664	76.7%
42		290		607		552		572	
52	1,333	959	39.0%	683	95.3%	686	94.4%	736	81.1%
54	2,230	2,067	7.9%	1,823	22.3%	1,727	29.2%	1,805	23.6%
56	223	103	117.2%						
62	2,470	2,038	21.2%	1,434	72.3%	1,343	83.9%	1,341	84.2%
70	205	108	90.5%						
72	496	430	15.3%	338	46.7%	350	41.9%	378	31.3%
73	777	971	-20.0%	1,172	-33.7%	860	-9.7%	922	-15.7%
75	2,415	1,295	86.5%	512	371.7%	468	416.0%	471	413.3%
77	8,841	7,044	25.5%	5,248	68.5%	4,197	110.7%	4,118	114.7%
79	9,322	7,733	20.6%	7,410	25.8%	5,667	64.5%	6,287	48.3%
82 - WESTCHESTER CIRC		22		34		50		52	

METROBUS AVERAGE SATURDAY BOARDINGS BY ROUTE

Route	Average Saturday	Average Saturday	Percent Change	Average Saturday	Percent Change	Average Saturday	Percent Change	Average Saturday	Percent Change
	Dec-23	Nov-23	MOM	Dec-22	YOY	Feb-20	Current vs Feb-20	Dec-19	YO4Y
Saturdays									
87	1,123	952	18.0%	580	93.7%	402	179.1%	519	116.4%
88	1,811	1,835	-1.3%	1,656	9.4%	1,620	11.8%	1,815	-0.2%
97	190	191	-0.3%	165	15.0%	215	-11.6%	314	-39.5%
100	19,445	12,103	60.7%	6,256	210.8%	4,744	309.9%	5,341	264.1%
103 - C						315		286	
103	1,708	1,428	19.6%	1,134	50.5%	951	79.6%	1,050	62.6%
104	896	642	39.6%	423	112.1%	468	91.3%	508	76.5%
105 - E		353		841		619		689	
107	1,547	808	91.5%	231	570.7%	252	514.2%	292	430.6%
108 - H		209		451		372		409	
110 - J		907		2,173		1,952		1,954	
113 - M		255		448		503		462	
115		46		54		82		79	
119 - S		4,130		9,013		6,861		7,379	
125	3,079	2,036	51.2%	1,267	142.9%	1,066	188.7%	1,097	180.6%
135	1,064	826	28.7%	482	120.8%	539	97.5%	497	114.0%
137-WEST DADE CONNECTION	1,791	1,627	10.1%	1,370	30.7%	1,027	74.4%	1,140	57.2%
150-MIAMI BEACH AIRPORT EXPRESS	1,872	1,933	-3.1%	2,111	-11.3%	1,604	16.7%	1,572	19.1%
152	240	339	-29.0%	379	-36.6%	302	-20.5%	322	-25.5%
183	3,674	2,664	38.0%	2,058	78.6%	1,790	105.3%	1,908	92.6%
199	1,536	1,257	22.2%	1,012	51.8%	849	81.0%	906	69.6%
202 - LITTLE HAITI CONN		8		27		50		68	
207 (7th St)-LITTLE HAVANA CONN	1,197	1,044	14.6%	904	32.3%	1,032	15.9%	1,013	18.2%
208 (8th St)-LITTLE HAVANA CONN	1,413	1,246	13.4%	1,259	12.3%	1,044	35.3%	1,157	22.1%
241 TUTTLE LIMITED		119		131					
286-NORTH POINTE CIRC		34		43		41		66	
301-DADE MONROE EXPRESS	1,116	1,000	11.6%	808	38.1%	801	39.4%	866	28.9%
302-CARD SOUND EXPRESS	100	95	5.5%	87	14.9%	57	76.7%	64	57.5%
338 - WEEKEND EXPRESS	323	145	122.5%	241	33.9%	237	36.3%	231	39.7%
344	88	24	262.9%						
400 - SOUTH OWL	93	71	30.0%	95	-2.5%	70	32.3%	44	110.5%
401 - NORTH OWL	77	72	7.6%	50	54.4%	84	-8.5%	95	-18.3%
500 - CUTLER BAY LOCAL	236	241	-2.1%	93	153.9%	119	97.7%	125	88.1%
510 - SKYLAKE CIRCULATOR (*)	169	179	-5.9%	82	105.1%	165	2.2%	184	-8.1%
12/21 WEEKEND INTERLINE	3,669	3,792	-3.2%	2,705	35.7%	2,528	45.2%	2,653	38.3%
FEDERATION GARDENS SHUTTLE	21	24	-13.3%	19	6.2%	28	-27.5%	26	-19.2%
Total	156,909	128,731	21.9%	107,106	46.5%	93,742	67.4%	98,366	59.5%

METROBUS AVERAGE SUNDAY BOARDINGS BY ROUTE

Route	Average Sunday	Average Sunday	Percent Change	Average Sunday	Percent Change	Average Sunday	Percent Change	Average Sunday	Percent Change
	Dec-23	Nov-23	MOM	Dec-22	YOY	Feb-20	Current vs Feb-20	Dec-19	YO4Y
Sundays									
2	1,065	991	7.5%	1,076	-1.0%	1,335	-20.2%	1,003	6.2%
3	6,223	5,317	17.1%	4,281	45.4%	4,353	43.0%	4,202	48.1%
7	2,101	1,901	10.5%	1,379	52.3%	1,654	27.0%	1,410	49.0%
8	2,068	2,072	-0.2%	1,808	14.4%	1,746	18.4%	1,591	30.0%
9	5,544	4,342	27.7%	2,351	135.8%	2,549	117.5%	2,442	127.1%
10		660		1,416		1,441		1,276	
11	7,127	5,353	33.1%	3,919	81.9%	3,917	82.0%	3,628	96.4%
14	1,383	723	91.2%						
15	293	243	20.5%	21	1296.8%	56	428.5%	41	609.7%
16		397		948		997		886	
17	3,584	2,707	32.4%	1,715	109.0%	1,833	95.5%	1,553	130.7%
20	2,999	1,492	101.0%						
22	1,342	1,571	-14.6%	1,687	-20.5%	1,548	-13.3%	1,478	-9.2%
24-CORAL WAY LIMITED	1,381	1,369	0.8%	969	42.5%	905	52.6%	935	47.6%
26	957	1,031	-7.2%	730	31.1%	717	33.6%	672	42.4%
27	4,455	3,730	19.4%	2,685	65.9%	2,918	52.7%	2,774	60.6%
31-BUSWAY LOCAL				594		715		604	
32	980	972	0.8%	698	40.5%	772	27.0%	738	32.8%
35	1,529	1,259	21.4%	1,051	45.5%	942	62.3%	955	60.0%
36	4,020	2,806	43.3%	1,023	292.9%	1,111	262.0%	1,012	297.4%
37	2,579	2,246	14.8%	1,541	67.4%	1,739	48.3%	1,603	60.9%
38 TRANSITWAY MAX	5,409	5,940	-8.9%	2,770	95.3%	4,147	30.5%	3,808	42.1%
40	797	711	12.1%	484	64.7%	447	78.1%	416	91.3%
42		226		360		416		355	
52	966	781	23.6%	398	142.6%	466	107.1%	457	111.5%
54	1,354	1,333	1.6%	1,009	34.2%	1,171	15.6%	1,226	10.4%
62	1,569	1,284	22.2%	837	87.5%	891	76.2%	877	78.9%
70	157	83	90.5%						
72	389	320	21.8%	296	31.4%	265	47.1%	252	54.4%
73	278	468	-40.5%	602	-53.8%	495	-43.8%	444	-37.4%
75	1,706	1,019	67.5%	302	465.8%	271	530.1%	254	571.2%
77	5,711	4,786	19.3%	3,112	83.5%	2,815	102.9%	2,773	106.0%
79	6,958	5,757	20.9%	4,880	42.6%	4,804	44.8%	4,519	54.0%

METROBUS AVERAGE SUNDAY BOARDINGS BY ROUTE

Route	Average Sunday	Average Sunday	Percent Change	Average Sunday	Percent Change	Average Sunday	Percent Change	Average Sunday	Percent Change
	Dec-23	Nov-23	MOM	Dec-22	YOY	Feb-20	Current vs Feb-20	Dec-19	YO4Y
Sundays									
87	523	447	17.1%	326	60.6%	319	63.9%	285	83.4%
88	1,262	1,271	-0.7%	1,169	8.0%	1,286	-1.8%	1,209	4.4%
97	150	153	-2.4%	138	8.8%	201	-25.4%	272	-44.9%
100	13,183	9,261	42.3%	3,564	269.9%	3,469	280.0%	3,400	287.7%
103 - C						212		173	
103	1,063	837	26.9%	661	60.9%	607	75.1%	609	74.5%
104	517	484	6.9%	260	98.9%	317	63.1%	283	83.0%
105 - E		298		687		616		570	
107	1,243	726	71.2%	115	983.2%	162	667.3%	159	680.9%
108 - H		143		355		328		331	
110 - J		725		1,662		1,638		1,419	
113 - M		131		393		431		418	
115		27		36		80		85	
119 - S		3,274		8,423		7,141		7,293	
125	2,162	1,451	49.0%	843	156.6%	895	141.5%	810	167.0%
135	834	670	24.4%	328	154.1%	349	138.8%	349	139.0%
137-WEST DADE CONNECTION	1,161	1,150	1.0%	851	36.4%	879	32.1%	779	49.0%
150-MIAMI BEACH AIRPORT EXPRESS	1,827	1,982	-7.8%	2,194	-16.7%	1,574	16.1%	1,463	24.9%
152	176	225	-21.6%	313	-43.8%	199	-11.4%	229	-23.1%
183	2,341	1,960	19.4%	1,456	60.8%	1,413	65.7%	1,258	86.1%
199	1,118	922	21.2%	773	44.6%	658	69.8%	653	71.1%
202 - LITTLE HAITI CONN		8		23		39		54	
207 (7th St)-LITTLE HAVANA CONN	815	629	29.5%	743	9.6%	796	2.3%	699	16.6%
208 (8th St)-LITTLE HAVANA CONN	1,070	888	20.5%	809	32.3%	911	17.4%	908	17.9%
241 TUTTLE LIMITED		74		134					
301-DADE MONROE EXPRESS	1,019	1,066	-4.4%	702	45.2%	751	35.7%	753	35.4%
302-CARD SOUND EXPRESS	83	82	1.1%	89	-6.8%	57	44.7%	70	18.1%
338 - WEEKEND EXPRESS	194	123	58.0%	202	-3.9%	252	-22.9%	219	-11.1%
400 - SOUTH OWL	97	74	30.7%	76	27.2%	83	17.2%	39	147.7%
401 - NORTH OWL	69	50	38.8%	61	13.3%	87	-20.9%	107	-35.4%
500 - CUTLER BAY LOCAL	80	55	44.9%	72	11.5%	59	36.8%	48	66.7%
510 - SKYLAKE CIRCULATOR (*)	188	181	3.8%	94	99.6%	143	31.2%	155	21.1%
12/21 WEEKEND INTERLINE	2,995	2,831	5.8%	0	#DIV/0!	2,048	46.2%	1,955	53.2%
Total	109,089	96,088	13.5%	72,484	50.5%	75,428	44.6%	71,426	52.7%

METROBUS TOTAL MONTHLY BOARDINGS BY ROUTE

Route	Total Month	Total Month	Percent Change	Total Month	Percent Change	Total Month	Percent Change	Total Month	Percent Change
	Dec-23	Nov-23	MOM	Dec-22	YOY	Feb-20	Current vs Feb-20	Dec-19	YO4Y
total month									
2	56,912	55,002	3.5%	67,559	-15.8%	75,463	-24.6%	60,687	-6.2%
3	270,385	214,225	26.2%	170,535	58.6%	146,294	84.8%	148,005	82.7%
7	121,989	111,189	9.7%	98,320	24.1%	86,077	41.7%	78,875	54.7%
8	146,081	128,457	13.7%	118,037	23.8%	95,295	53.3%	90,285	61.8%
9	334,187	258,220	29.4%	155,305	115.2%	135,924	145.9%	136,412	145.0%
10		27,532		65,149		64,874		58,385	
11	357,543	293,222	21.9%	231,675	54.3%	187,425	90.8%	181,157	97.4%
12	68,962	66,597	3.6%	61,982	11.3%	55,585	24.1%	51,889	32.9%
14	40,903	20,355	100.9%						
15	12,002	8,316	44.3%	5,979	100.7%	4,114	191.7%	4,130	190.6%
16		21,239		55,975		49,061		48,703	
17	193,959	143,814	34.9%	99,311	95.3%	96,715	100.5%	93,560	107.3%
19		14,364		31,520		30,847		27,562	
20	133,297	68,947	93.3%						
21	51,743	49,494	4.5%	37,664	37.4%	36,341	42.4%	37,269	38.8%
22	77,255	89,079	-13.3%	110,912	-30.3%	89,404	-13.6%	89,365	-13.6%
24-CORAL WAY LIMITED	80,742	69,420	16.3%	59,656	35.3%	36,237	122.8%	45,137	78.9%
26	62,111	57,191	8.6%	54,506	14.0%	42,683	45.5%	40,802	52.2%
27	267,059	222,250	20.2%	179,614	48.7%	171,282	55.9%	167,976	59.0%
29		4,003		10,117		10,684		13,699	
31-BUSWAY LOCAL				30,966		29,125		28,793	
32	52,729	57,636	-8.5%	64,714	-18.5%	56,027	-5.9%	54,336	-3.0%
34 TRANSITWAY EXPRESS	33,883	34,216	-1.0%	27,140	24.8%	40,159	-15.6%	37,257	-9.1%
35	72,267	68,700	5.2%	66,524	8.6%	59,041	22.4%	59,666	21.1%
36	197,702	133,885	47.7%	70,090	182.1%	61,606	220.9%	62,236	217.7%
37	140,462	114,412	22.8%	93,878	49.6%	82,870	69.5%	83,425	68.4%
38 TRANSITWAY MAX	233,952	194,265	20.4%	157,374	48.7%	167,379	39.8%	175,265	33.5%
39 TRANSITWAY EXPRESS	15,860	15,069	5.2%			17,853	-11.2%	16,697	-5.0%
40	51,185	52,235	-2.0%	51,445	-0.5%	40,497	26.4%	37,872	35.2%
42		10,000		26,998		20,825		21,322	
46 - LIBERTY CITY CONN.		170		465		814		1,072	
52	49,189	40,994	20.0%	32,364	52.0%	30,522	61.2%	29,443	67.1%
54	86,006	82,219	4.6%	78,344	9.8%	72,125	19.2%	73,969	16.3%
56	13,366	11,008	21.4%	7,132	87.4%	7,071	89.0%	7,854	70.2%
57		3,927		10,111		8,665		8,025	
62	87,843	73,318	19.8%	49,141	78.8%	46,582	88.6%	48,248	82.1%
70	8,291	5,900	40.5%	2,997	176.6%	2,690	208.2%	768	979.6%

METROBUS TOTAL MONTHLY BOARDINGS BY ROUTE

Route	Total Month	Total Month	Percent Change	Total Month	Percent Change	Total Month	Percent Change	Total Month	Percent Change
	Dec-23	Nov-23	MOM	Dec-22	YOY	Feb-20	Current vs Feb-20	Dec-19	YO4Y
total month									
72	24,419	19,821	23.2%	15,561	56.9%	18,433	32.5%	17,779	37.3%
73	38,867	50,502	-23.0%	69,535	-44.1%	48,767	-20.3%	44,936	-13.5%
75	87,425	62,030	40.9%	31,414	178.3%	31,994	173.3%	33,345	162.2%
77	327,723	279,394	17.3%	229,815	42.6%	174,833	87.4%	181,483	80.6%
79	292,730	247,534	18.3%	248,361	17.9%	200,268	46.2%	208,875	40.1%
82 - WESTCHESTER CIRC		589		1,356		1,482		1,584	
87	60,969	52,099	17.0%	44,730	36.3%	33,273	83.2%	33,077	84.3%
88	61,485	62,229	-1.2%	64,854	-5.2%	54,772	12.3%	56,990	7.9%
95-EXPRESS GOLDEN GLADES	25,540	24,131	5.8%	20,539	24.3%	33,796	-24.4%	34,115	-25.1%
97	6,016	5,664	6.2%	6,013	0.0%	5,558	8.2%	9,269	-35.1%
100	587,875	388,128	51.5%	198,188	196.6%	170,942	243.9%	179,335	227.8%
103 - C						11,682		11,465	
103	63,942	55,702	14.8%	47,311	35.2%	40,918	56.3%	41,532	54.0%
104	30,690	27,897	10.0%	20,270	51.4%	20,351	50.8%	20,522	49.5%
105 - E		14,076		39,059		31,302		31,710	
107	61,354	42,919	43.0%	15,719	290.3%	16,118	280.7%	15,302	301.0%
108 - H		5,882		19,698		12,624		13,190	
110 - J		33,241		85,038		66,481		70,157	
113 - M		8,926		19,884		21,548		20,871	
115		1,498		3,484		4,334		4,288	
119 - S		110,641		308,933		242,257		254,718	
125	121,106	85,868	41.0%	50,598	139.3%	43,178	180.5%	42,820	182.8%
132 -TRI-RAIL DORAL SHUTTLE	1,014	1,002	1.2%	1,043	-2.8%	312	225.0%	63	1509.5%
135	52,273	46,155	13.3%	33,520	55.9%	32,067	63.0%	30,954	68.9%
136	3,499	4,137	-15.4%	3,275	6.8%	2,524	38.6%	2,481	41.0%
137-WEST DADE CONNECTION	70,832	62,841	12.7%	54,329	30.4%	41,167	72.1%	40,658	74.2%
150-MIAMI BEACH AIRPORT EXPRESS	59,705	62,124	-3.9%	68,717	-13.1%	51,651	15.6%	50,065	19.3%
152	10,867	16,494	-34.1%	23,188	-53.1%	19,325	-43.8%	18,865	-42.4%
155 - BISCAYNE GARDENS CIRC		419		833		881		1,012	
175 - NW MIAMI-DADE EXPRESS						661		329	
183	142,013	116,711	21.7%	89,115	59.4%	77,570	83.1%	78,182	81.6%
195 EXPRESS - BROWARD BLVD						7,441		6,870	
196 EXPRESS - SHERIDAN ST						7,658		6,998	
199	58,841	51,820	13.5%	42,845	37.3%	36,325	62.0%	36,249	62.3%
202 - LITTLE HAITI CONN		973		1,897		3,200		3,402	
203 - BISCAYNE MAX	31,659	48,014	-34.1%	80,920	-60.9%	66,684	-52.5%	66,587	-52.5%

METROBUS TOTAL MONTHLY BOARDINGS BY ROUTE

Route	Total Month	Total Month	Percent Change	Total Month	Percent Change	Total Month	Percent Change	Total Month	Percent Change
	Dec-23	Nov-23	MOM	Dec-22	YOY	Feb-20	Current vs Feb-20	Dec-19	YO4Y
total month									
204 KILLIAN MAX	12,412	13,006	-4.6%	13,040	-4.8%	21,418	-42.0%	17,725	-30.0%
207 (7th St)-LITTLE HAVANA CONN	54,370	47,311	14.9%	44,757	21.5%	38,127	42.6%	40,422	34.5%
208 (8th St)-LITTLE HAVANA CONN	56,535	46,758	20.9%	44,714	26.4%	35,018	61.4%	40,483	39.7%
211 OVERTOWN CIRCULATOR		681		2,029		1,159		1,503	
211 - FLAGLER MAX	40,170	52,162	-23.0%	80,587	-50.2%	62,186	-35.4%	61,689	-34.9%
212-SWEETWATER CIRC		232		457		295		1,174	
217 - BUNCHE PARK CIRC		665		1,150		1,949		1,456	
238-EAST/WEST CONN		5,043		13,563		8,987		9,415	
241 TUTTLE LIMITED		3,544		6,277					
254-BROWNSVILLE CIRC		39		129		384		393	
267-LUDLAM LIMITED		1,243		3,186		2,978		2,656	
272 SUNSET MAX (*)	7,375	8,051	-8.4%	7,351	0.3%	11,004	-33.0%	10,849	-32.0%
277-7TH AVENUE MAX		8,343		15,117		13,669		12,260	
279 - 79 STREET MAX	16,471	13,393	23.0%	11,573	42.3%	7,228	127.9%	8,155	102.0%
286-NORTH POINTE CIRC		806		2,116		2,145		2,228	
287-SAGA BAY MAX	8,080	7,209	12.1%	6,253	29.2%	7,160	12.8%	6,552	23.3%
288 KENDALL MAX	10,525	9,517	10.6%	10,053	4.7%	15,249	-31.0%	14,897	-29.3%
295						4,668		4,547	
296						4,297		4,113	
297-27th AVENUE ORANGE MAX		9,598		25,562		27,125		26,892	
301-DADE MONROE EXPRESS	35,676	31,216	14.3%	24,779	44.0%	23,838	49.7%	25,280	41.1%
302-CARD SOUND EXPRESS	3,145	2,959	6.3%	2,987	5.3%	2,236	40.7%	2,290	37.3%
338 - WEEKEND EXPRESS	2,779	1,195	132.6%	2,014	38.0%	2,191	26.8%	2,236	24.3%
344	3,182	2,133	49.2%	1,108	187.2%	1,919	65.8%	2,135	49.0%
400 - SOUTH OWL	2,934	2,223	32.0%	2,455	19.5%	2,301	27.5%	1,283	128.7%
401 - NORTH OWL	1,998	1,617	23.6%	1,685	18.6%	2,641	-24.3%	3,145	-36.5%
500 - CUTLER BAY LOCAL	6,769	6,743	0.4%	3,448	96.3%	3,984	69.9%	3,932	72.2%
510 - SKYLAKE CIRCULATOR (*)	9,799	9,492	3.2%	6,974	40.5%	7,033	39.3%	6,305	55.4%
836 EXPRESS	5,946	5,927	0.3%	4,796	24.0%				
837 EXPRESS	3,495	4,003	-12.7%	1,769	97.6%				
12/21 WEEKEND INTERLINE	36,314	29,323	23.8%	13,525	168.5%	20,830	74.3%	22,341	62.5%
AHEPA SHUTTLE	71	71	0.0%	83	-14.5%	83	-14.5%	70	1.4%
FEDERATION GARDENS SHUTTLE	103	95	8.4%	97	6.2%	142	-27.5%	102	1.0%
GREEN HILLS SHUTTLE	19	26	-26.9%	19	0.0%	36	-47.2%	38	-50.0%
KINGS CREEK SHUTTLE	33	30	10.0%	66	-50.0%	52	-36.5%	76	-56.6%
ROBERT SHARP SHUTTLE	52	117	-55.6%	145	-64.1%	38	36.8%	19	173.7%
SIERRA LAKES SHUTTLE	95	70	35.7%	55	72.7%	180	-47.2%	105	-9.5%
Total	5,857,057	5,135,172	14.1%	4,677,460	25.2%	4,123,083	42.1%	4,126,990	41.9%

YEAR-OVER-YEAR BUS RIDERSHIP BY ROUTE SERVICE TYPE

Boardings by Service Type and Route	Average Weekday	Average Weekday	Percent Change	Average Saturday	Average Saturday	Percent Change	Average Sunday	Average Sunday	Percent Change	Total Monthly	Total Monthly	Percent Change
	Dec-23	Dec-22	23 vs 22	Dec-23	Dec-22	23 vs 22	Dec-23	Dec-22	23 vs 22	Dec-23	Dec-22	23 vs 22
Directly Operated Express Routes												
34 TRANSITWAY EXPRESS	1,694	1,234	37.3%							33,883	27,140	24.8%
39 TRANSITWAY EXPRESS	793									15,860		
95-EXPRESS GOLDEN GLADES	1,277	934	36.8%							25,540	20,539	24.3%
150-MIAMI BEACH AIRPORT EXPRESS	1,969	2,245	-12.3%	1,872	2,111	-11.3%	1,827	2,194	-16.7%	59,705	68,717	-13.1%
338 - WEEKEND EXPRESS				323	241	33.9%	194	202	-3.9%	2,779	2,014	38.0%
836 EXPRESS	297	218	36.4%							5,946	4,796	24.0%
837 EXPRESS	175	80	117.3%							3,495	1,769	97.6%
Subtotal Express Routes	6,205	4,711	31.7%	2,195	2,352	-6.7%	2,022	2,396	-15.6%	147,208	124,975	17.8%
Percentage of All Bus Routes	2.8%	2.7%		1.4%	2.2%		1.9%	3.3%		2.5%	2.7%	
Contracted Routes - Local Service (*)												
2	2,243	2,520	-11.0%	1,131	1,563	-27.6%	1,065	1,076	-1.0%	56,912	67,559	-15.8%
15	411	260	58.0%	404	35	1062.1%	293	21	1296.8%	12,002	5,979	100.7%
29		460									10,117	
46 - LIBERTY CITY CONN.		21									465	
56	613	324	88.9%	223						13,366	7,132	87.4%
70	316	136	132.1%	205			157			8,291	2,997	176.6%
72	980	577	70.0%	496	338	46.7%	389	296	31.4%	24,419	15,561	56.9%
82 - WESTCHESTER CIRC		54			34						1,356	
97	208	211	-1.1%	190	165	15.0%	150	138	8.8%	6,016	6,013	0.0%
115		140			54			36			3,484	
152	430	911	-52.7%	240	379	-36.6%	176	313	-43.8%	10,867	23,188	-53.1%
155 - BISCAYNE GARDENS CIRC		38									833	
202 - LITTLE HAITI CONN		76			27			23			1,897	
211 OVERTOWN CIRCULATOR		92									2,029	
212-SWEETWATER CIRC		21									457	
217 - BUNCHE PARK CIRC		52									1,150	
254-BROWNSVILLE CIRC		6									129	
267-LUDLAM LIMITED		145									3,186	
286-NORTH POINTE CIRC		86		0	43						2,116	
344	137	50	172.2%	88						3,182	1,108	187.2%
401 - NORTH OWL	60	57	5.6%	77	50	54.4%	69	61	13.3%	1,998	1,685	18.6%
Subtotal Contracted Reg. & Circ. Routes	5,399	6,237	-13.4%	3,055	2,688	13.6%	2,300	1,963	17.1%	137,053	158,441	-13.5%
Percentage of All Bus Routes	2.4%	3.6%		1.9%	2.5%		2.1%	2.7%		2.3%	3.4%	

(1) Several express routes were suspended beginning at the end of March 2020, due to the SARS-CoV-2 pandemic, while other routes had alignment and schedule modifications made to them, in an ongoing effort to optimize service delivery.

(2) A second major round of changes took place with the 11/13/23 lineup known as the Better Bus Network, as listed at the start of this Metrobus section.

YEAR-OVER-YEAR BUS RIDERSHIP BY ROUTE SERVICE TYPE

Boardings by Service Type and Route	Average Weekday	Average Weekday	Percent Change	Average Saturday	Average Saturday	Percent Change	Average Sunday	Average Sunday	Percent Change	Total Monthly	Total Monthly	Percent Change
	Dec-23	Dec-22	23 vs 22	Dec-23	Dec-22	23 vs 22	Dec-23	Dec-22	23 vs 22	Dec-23	Dec-22	23 vs 22
Contracted Express Routes												
301-DADE MONROE EXPRESS	1,199	815	47.1%	1,116	808	38.1%	1,019	702	45.2%	35,676	24,779	44.0%
302-CARD SOUND EXPRESS	108	100	7.6%	100	87	14.9%	83	89	-6.8%	3,145	2,987	5.3%
Subtotal Contracted Express Routes	1,307	915	42.8%	1,216	895	35.8%	1,102	791	39.4%	38,821	27,766	39.8%
Percentage of All Bus Routes	0.6%	0.5%		0.8%	0.8%		1.0%	1.1%		0.7%	0.6%	
Limited Stop Routes												
24-CORAL WAY LIMITED	3,027	2,220	36.4%	2,382	1,387	71.7%	1,381	969	42.5%	80,742	59,656	35.3%
38 TRANSITWAY MAX	8,271	5,658	46.2%	7,214	4,364	65.3%	5,409	2,770	95.3%	233,952	157,374	48.7%
203 - BISCAIYNE MAX	1,583	3,678	-57.0%							31,659	80,920	-60.9%
204 KILLIAN MAX	621	593	4.7%							12,412	13,040	-4.8%
211 - FLAGLER MAX	2,009	3,663	-45.2%							40,170	80,587	-50.2%
241 TUTTLE LIMITED		231			131			134			6,277	
272 SUNSET MAX (*)	369	334	10.4%							7,375	7,351	0.3%
277-7TH AVENUE MAX		687									15,117	
279 - 79 STREET MAX	824	526	56.6%							16,471	11,573	42.3%
287-SAGA BAY MAX	404	284	42.1%							8,080	6,253	29.2%
288 KENDALL MAX	526	457	15.2%							10,525	10,053	4.7%
297-27th AVENUE ORANGE MAX		1,162									25,562	
Subtotal Limited Stop Routes	17,633	19,494	-9.5%	9,596	5,882	63.1%	6,790	3,872	75.4%	441,386	473,763	-6.8%
Percentage of All Bus Routes	8.0%	11.1%		6.1%	5.5%		6.2%	5.3%		7.5%	10.1%	
Directly Operated Free Routes												
132 -TRI-RAIL DORAL SHUTTLE	51	47	6.9%							1,014	1,043	-2.8%
500 - CUTLER BAY LOCAL	256	123	108.5%	236	93	153.9%	80	72	11.5%	6,769	3,448	96.3%
510 - SKYLAKE CIRCULATOR (*)	392	281	39.2%	169	82	105.1%	188	94	99.6%	9,799	6,974	40.5%
Subtotal Free Directly Operated Routes	698	451	54.6%	404	175	131.0%	268	166	61.5%	17,582	11,465	53.4%
Percentage of All Bus Routes	0.3%	0.3%		0.3%	0.2%		0.2%	0.2%		0.3%	0.2%	
Contractor-Operated Lifeline Routes												
GREEN HILLS SHUTTLE	10	5	100.0%							19	19	0.0%
KINGS CREEK SHUTTLE	8	13	-37.5%							33	66	-50.0%
SIERRA LAKES SHUTTLE	19	11	72.7%							95	55	72.7%
ROBERT SHARP SHUTTLE	13	36	-64.1%							52	145	-64.1%
AHEPA SHUTTLE	18	17	6.9%							71	83	-14.5%
FEDERATION GARDENS SHUTTLE				21	19	6.2%				103	97	6.2%
Subtotal Contractor-Operated Lifeline Routes	68	82	-17.5%	21	19	6.2%				373	465	-19.8%
Percentage of All Bus Routes	0.0%	0.0%		0.0%	0.0%					0.0%	0.0%	
All Other (Regular) Routes	189,644	143,269	32.4%	140,422	95,095	47.7%	96,608	63,297	52.6%	5,074,634	3,880,585	30.8%
Percentage of All Bus Routes	85.8%	81.8%		89.5%	88.8%		88.6%	87.3%		86.6%	83.0%	
Total Bus System	220,953	175,158	26.1%	156,909	107,106	46.5%	109,089	72,484	50.5%	5,857,057	4,677,460	25.2%

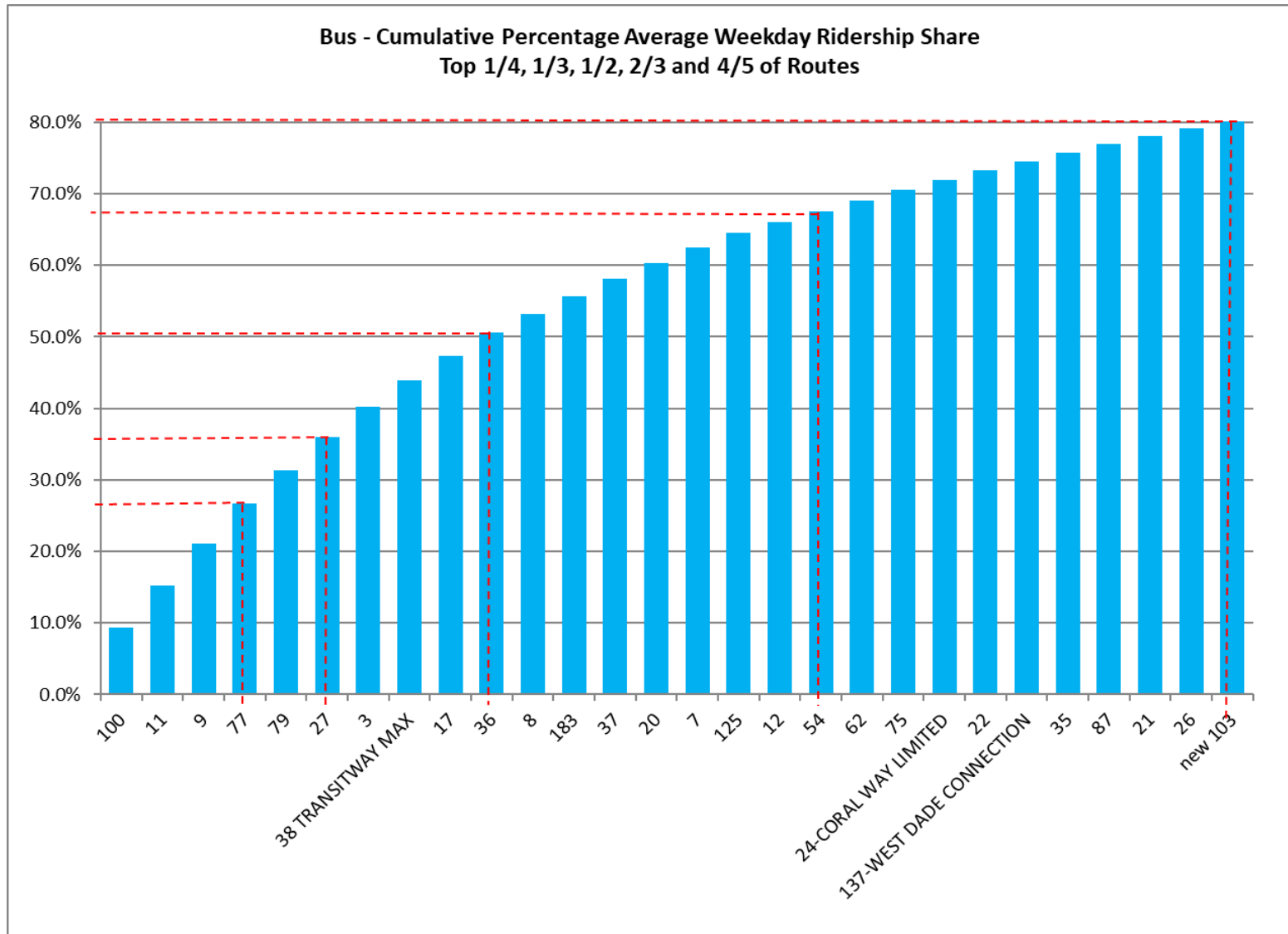
Bus Routes as Ranked by Percentage of Average Weekday Ridership December 2023

Rank	Route	Average Weekday	Percent Share	Cumul Pct Share	Rank	Route	Average Weekday	Percent Share	Cumul Pct Share	Rank	Route	Average Weekday	Percent Share	Cumul Pct Share
1	100	20,577	9.3%	9.3%	29	21	2,587	1.2%	78.1%	57	510	392	0.2%	99.0%
2	11	13,029	5.9%	15.2%	30	26	2,477	1.1%	79.2%	58	272	369	0.2%	99.1%
3	9	12,886	5.8%	21.0%	31	88	2,243	1.0%	83.4%	59	70	316	0.1%	99.3%
4	77	12,463	5.6%	26.7%	32	199	2,223	1.0%	84.4%	60	836	297	0.1%	99.4%
5	79	10,218	4.6%	31.3%	33	207	2,175	1.0%	85.4%	61	500	256	0.1%	99.5%
6	27	10,198	4.6%	35.9%	34	208	2,152	1.0%	86.3%	62	97	208	0.1%	99.6%
7	3	9,503	4.3%	40.2%	35	135	2,098	0.9%	87.3%	63	136	175	0.1%	99.7%
8	38	8,271	3.7%	44.0%	36	40	2,027	0.9%	88.2%	64	837	175	0.1%	99.8%
9	17	7,316	3.3%	47.3%	37	32	2,018	0.9%	89.1%	65	344	137	0.1%	99.8%
10	36	7,259	3.3%	50.6%	38	new 211	2,009	0.9%	90.0%	66	302	108	0.0%	99.9%
11	8	5,849	2.6%	53.2%	39	150	1,969	0.9%	90.9%	67	400	94	0.0%	99.9%
12	183	5,480	2.5%	55.7%	40	52	1,836	0.8%	91.7%	68	401	60	0.0%	99.9%
13	37	5,359	2.4%	58.1%	41	34	1,694	0.8%	92.5%	69	132	51	0.0%	100.0%
14	20	4,783	2.2%	60.3%	42	73	1,666	0.8%	93.3%	70	SL	19	0.0%	100.0%
15	7	4,748	2.1%	62.4%	43	203	1,583	0.7%	94.0%	71	AS	18	0.0%	100.0%
16	125	4,637	2.1%	64.5%	44	14	1,361	0.6%	94.6%	72	RS	13	0.0%	100.0%
17	12	3,448	1.6%	66.1%	45	95	1,277	0.6%	95.2%	73	GH	10	0.0%	100.0%
18	54	3,337	1.5%	67.6%	46	301	1,199	0.5%	95.7%	74	KC	8	0.0%	100.0%
19	62	3,304	1.5%	69.1%	47	104	1,155	0.5%	96.2%					
20	75	3,256	1.5%	70.6%	48	72	980	0.4%	96.7%					
21	24	3,027	1.4%	71.9%	49	279	824	0.4%	97.1%					
22	22	2,964	1.3%	73.3%	50	39	793	0.4%	97.4%					
23	137	2,746	1.2%	74.5%	51	204	621	0.3%	97.7%					
24	35	2,627	1.2%	75.7%	52	56	613	0.3%	98.0%					
25	87	2,611	1.2%	76.9%	53	288	526	0.2%	98.2%					
26	new 103	2,451	1.1%	80.3%	54	152	430	0.2%	98.4%					entirely contracted in Dec-23
27	107	2,308	1.0%	81.3%	55	15	411	0.2%	98.6%					
28	2	2,243	1.0%	82.4%	56	287	404	0.2%	98.8%					
Total Boardings												220,953	100.0%	100.0%

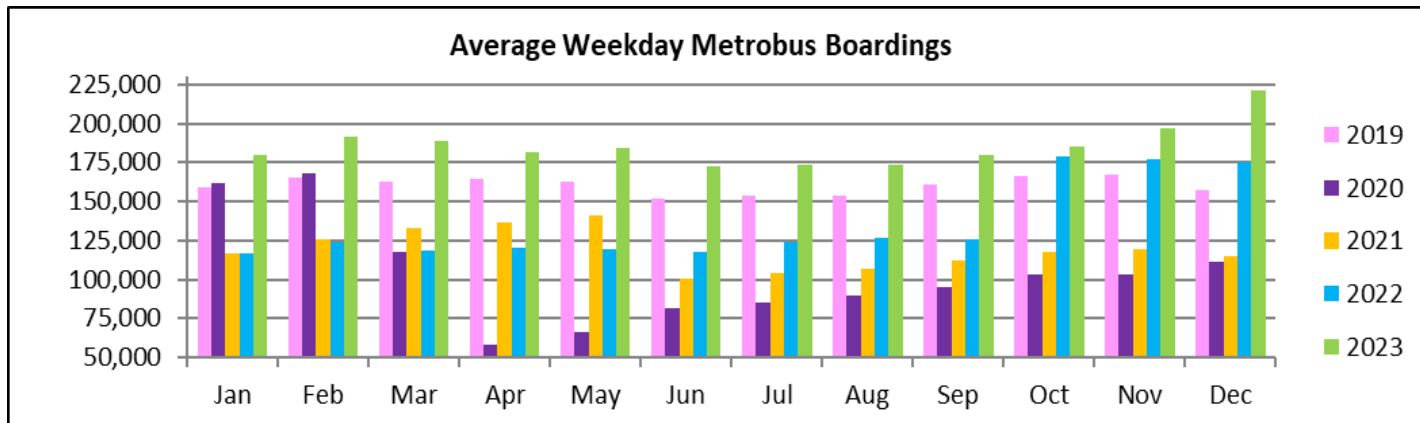
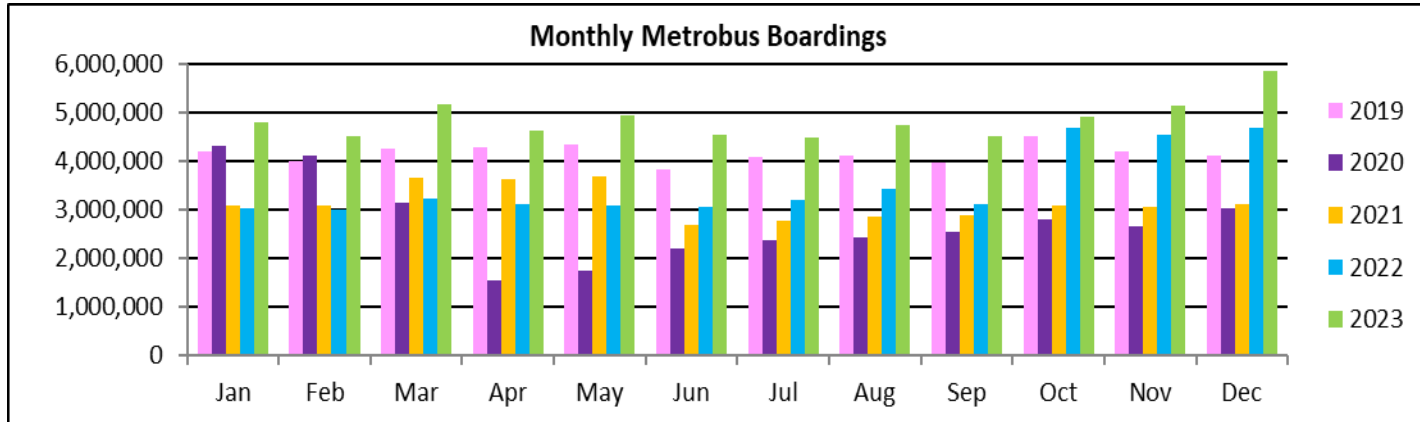
(1) Average weekday ridership rounded to the nearest unit.

(2) Includes the five Lifeline Shuttles that operate on weekdays: Ahepa (AS), Green Hills (GH), Kings Creek (KC), Robert Sharp (RS) and Sierra Lakes (SL).

METROBUS CUMULATIVE PERCENTAGE RIDERSHIP SHARE – BY ROUTE



TOTAL MONTHLY AND AVERAGE WEEKDAY RIDERSHIP YEAR OVER YEAR COMPARISON CHARTS – METROBUS



“TOP 10 / BOTTOM 10” BUS ROUTES SETS AVERAGE WEEKDAY RIDERSHIP PERFORMANCE YEAR OVER YEAR COMPARISON

Route Set (*), (1), (2)	Dec-23	Dec-22	Absolute Delta	Percent Delta	routes included in set
{ 11 }	13,029	8,359	4,670	55.9%	11, 212
{ 20 }	6,801	2,698	4,103	152.1%	20, 32, 115
{ 17 & 22 & 75 }	13,536	9,915	3,621	36.5%	17, 22, 75, 108, 217
{ 77 }	12,463	9,375	3,088	32.9%	77, 277
{ 9 }	12,886	10,089	2,798	27.7%	9, 10, 16
{ 27 }	10,198	7,866	2,332	29.6%	27, 297
{ new 107 }	5,863	3,594	2,270	63.2%	35, 56, 70, 71, new 107, 248
{ 279 }	11,042	9,244	1,798	19.5%	79, 112, 279
{ 3 & 203 }	11,086	9,307	1,779	19.1%	3, 93, 203
{ 100 }	20,577	18,861	1,717	9.1%	100, 105, 119, 120
{ 2 }	2,243	2,612	-369	-14.1%	2
150	1,969	2,245	-276	-12.3%	150
{ 73 & 183 }	7,146	7,411	-265	-3.6%	57, 73, 183, 238, 267, 286
88	2,243	2,359	-116	-4.9%	88
40	2,027	2,084	-57	-2.7%	40
{ lifeline }	68	82	-14	-17.5%	RS, SL, KC, RS, AS, AH
97	208	211	-2	-1.1%	97
401	60	57	3	5.6%	401
132	51	47	3	6.9%	132
302	108	100	8	7.6%	302

(*) Averages rounded to the nearest boarding, data as estimated from automatic passenger counter (APC) system; Lifeline shuttles excluded.

(1) The route sets, denoted by brackets, include the new 11/13/2023 lineup's Better Bus Network route designations, as well as older routes present for the first part of the month and previous months and years, then either renamed, absorbed, or eliminated. The sets were defined to enable reasonably fair comparisons between pre- and post-BBN timeframes, to the extent possible and practical, given the complexity of the changes for some of the routes and sets. The definitions are based on information from the DTPW website, and subject to future adjustments, if necessary.

(2) The adjective "new" in front of some new Better Bus Network-generated (recycled) route numbers was added to help prevent confusion with older but different routes with the same number present in previous months or years.

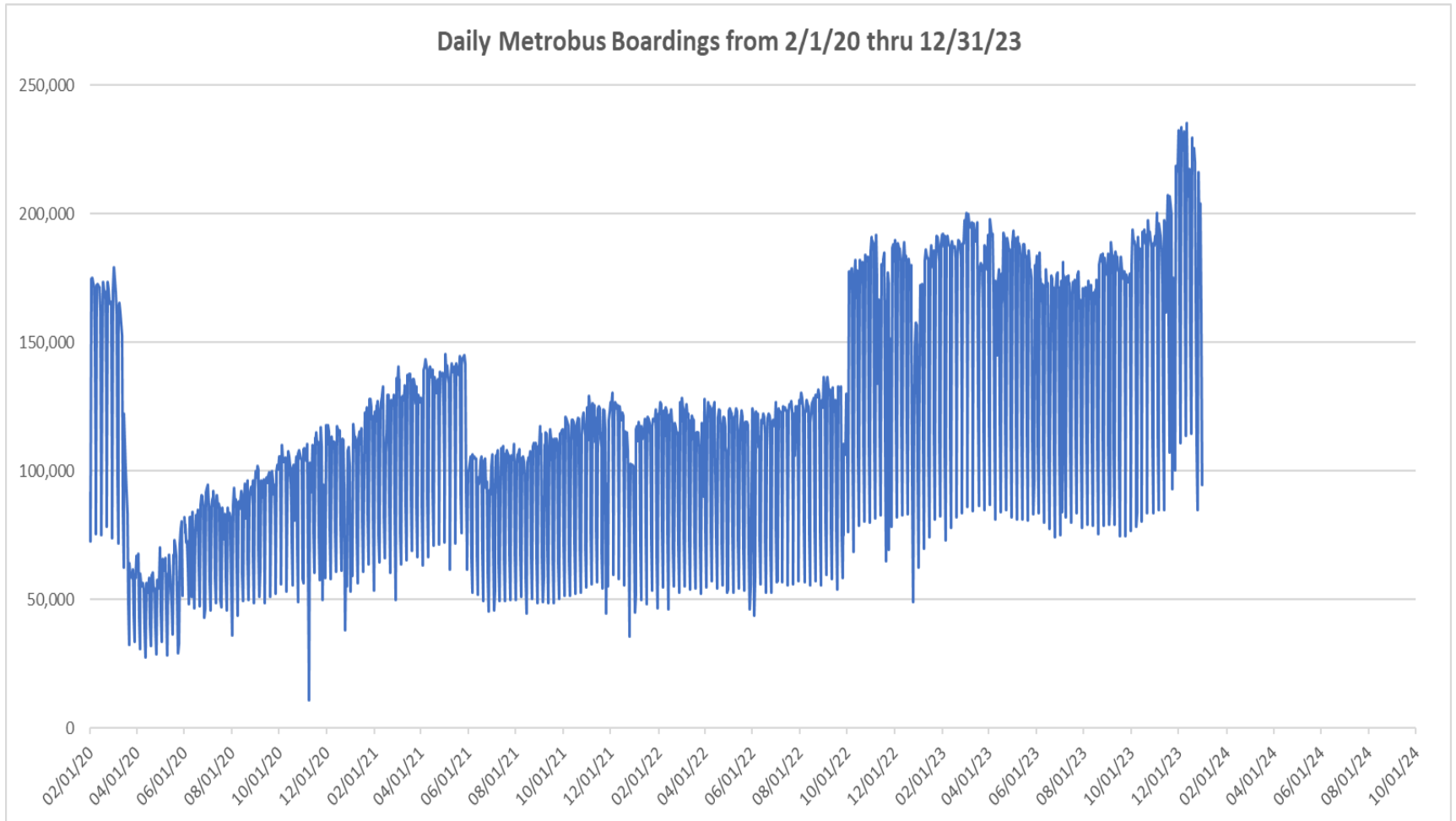
**“TOP 10 / BOTTOM 10” BUS ROUTES SETS AVERAGE WEEKDAY RIDERSHIP PERFORMANCE
MONTH OVER 2-MONTH PRIOR COMPARISON**

Route Set (*), (1), (2)	Dec-23	Oct-23	Absolute Delta	Percent Delta	routes included in set
{ 20 }	6,801	2,850	3,951	138.6%	20, 32, 115
{ 100 }	20,577	17,117	3,461	20.2%	100, 105, 119, 120
{ 11 }	13,029	9,644	3,385	35.1%	11, 212
{ 17 & 22 & 75 }	13,536	10,796	2,740	25.4%	17, 22, 75, 108, 217
{ 38 }	8,409	5,790	2,619	45.2%	38, 344
{ 279 }	11,042	8,950	2,092	23.4%	79, 112, 279
{ 3 & 203 }	11,086	9,082	2,005	22.1%	3, 93, 203
{ 9 }	12,886	10,942	1,944	17.8%	9, 10, 16
{ 27 }	10,198	8,339	1,859	22.3%	27, 297
{ 36 }	7,259	5,600	1,659	29.6%	36, 110
{ 2 }	2,243	3,048	-805	-26.4%	2
{ 73 & 183 }	7,146	7,890	-744	-9.4%	57, 73, 183, 238, 267, 286
40	2,027	2,344	-317	-13.5%	40
150	1,969	2,149	-180	-8.4%	150
88	2,243	2,419	-176	-7.3%	88
{ 52 }	2,267	2,442	-175	-7.2%	52, 152, 252
510	392	471	-80	-17.0%	510
272	369	428	-60	-13.9%	272
837	175	195	-20	-10.2%	837
97	208	225	-16	-7.2%	97

(*) Averages rounded to the nearest boarding, data as estimated from automatic passenger counter (APC) system; Lifeline shuttles excluded.

- (1) The route sets, denoted by brackets, include the new 11/13/2023 lineup's Better Bus Network route designations, as well as older routes present for the first part of the month and previous months and years, then either renamed, absorbed, or eliminated. The sets were defined to enable reasonably fair comparisons between pre- and post-BBN timeframes, to the extent possible and practical, given the complexity of the changes for some of the routes and sets. The definitions are based on information from the DTPW website, and subject to future adjustments, if necessary.
- (2) The adjective "new" in front of some new Better Bus Network-generated (recycled) route numbers was added to help prevent confusion with older but different routes with the same number present in previous months or years.
- (3) The notation "MOXM" is shorthand for "month over X months prior"

DAILY METROBUS RIDERSHIP SINCE FEBRUARY 1, 2020



- (1) There was no Metrobus, Metrorail and Metromover service on 5/31/20, as a safety precaution, and no service for any of the four modes on 9/28/22, as a result of Hurricane Ian.
- (2) The dip at the start of the second week of December 2020 is due to Hurricane Eta.
- (3) Daily variations from October 2022 onward are estimated from reports made available by the Bus APC data vendor.
- (4) The reduction seen beginning 6/1/21 is partly due to the resumption of fares and partly the result of resuming reporting Cubic farebox data rather than bus APC counts; the jump seen at the start of December 2022 is due to the return to APC bus ridership counts reporting beginning 10/1/22; the peak in Dec 2023 is attributable to the Better Bus Network launch period and attendant free fares.
- (5) Periodic (weekly) variations are prominent, since weekday ridership is almost always significantly higher than weekend or holiday ridership.

METROBUS PARKING PATRONAGE SUMMARY December 2023

PARK-RIDE LOT	ACTUAL AVAILABLE SPACES	ACTUAL OCCUPANCY	PERCENT OCCUPANCY
Transitway / SW 152nd St	200	160	80%
Transitway / SW 168th St (*)	149		
Transitway / SW 200th Street	100	35	35%
Transitway / SW 112 Ave (Target)	450	156	35%
Transitway / SW 244th St	95	71	75%
Transitway / SW 296th St	139	26	19%
Transitway / SW 344th St	248	176	71%
Coral Reef Drive 117/ Turnpike	95	77	81%
Golden Glades Facility	2,150	365	17%
Hammocks Town Center (SW 152 Ave / SW 104 St)	50	15	30%
Kendall Dr./SW 127th Ave	161	14	9%
West Kendall Transit Term (Kendall Dr / SW162 Ave)	40	15	38%
NW 7th Avenue Transit Village (NW 7 Ave / NW 62 St)	25	19	76%
Miami Gardens Dr. / NW 73rd Ave	136	0	0%
Dolphin Station	348	70	20%
Tamiami Station (eff 11-2022)	442	62	14%
I-75 / Miami Gardens Dr (**)	298		
TOTAL	5,126	1,261	25%

(*) Closed for construction beginning January 2022

(**) Route 175 Suspended 3/27/2020

Metrorail



METRORAIL AVERAGE WEEKDAY BOARDINGS BY STATION (†)

Weekdays	Average Weekday	Average Weekday	Percent Change	Average Weekday	Percent Change	Average Weekday	Percent Change	Average Weekday	Percent Change
STATIONS	Dec-23	Dec-22	YOY	Feb-20	Current vs Feb-20	Nov-23	MOM	Dec-19	YO4Y
ALLAPATTAH	1,951	1,544	26.4%	1,942	0.5%	1,667	17.0%	1,791	8.9%
BRICKELL	5,287	4,525	16.8%	6,529	-19.0%	4,966	6.5%	5,632	-6.1%
BROWNSVILLE	627	684	-8.4%	862	-27.3%	597	5.1%	797	-21.4%
CIVIC CENTER	4,273	3,404	25.5%	6,143	-30.4%	4,032	6.0%	5,119	-16.5%
COCONUT GROVE	1,675	1,317	27.2%	1,795	-6.7%	1,451	15.4%	1,564	7.1%
CULMER	1,125	910	23.6%	1,392	-19.2%	987	14.0%	1,215	-7.4%
DADELAND NORTH	2,812	3,433	-18.1%	5,926	-52.5%	3,584	-21.5%	5,262	-46.6%
DADELAND SOUTH	3,750	4,032	-7.0%	7,150	-47.6%	4,009	-6.5%	6,361	-41.0%
DOUGLAS ROAD	3,188	2,589	23.1%	3,624	-12.0%	2,913	9.4%	3,152	1.1%
DR. MARTIN LUTHER KING, JR.	951	799	19.0%	1,157	-17.8%	788	20.7%	1,083	-12.2%
EARLINGTON HEIGHTS	1,519	1,243	22.2%	1,662	-8.6%	1,360	11.7%	1,489	2.0%
GOVERNMENT CENTER	5,948	5,758	3.3%	10,557	-43.7%	6,291	-5.4%	9,010	-34.0%
HIALEAH	1,233	1,088	13.3%	1,253	-1.6%	875	40.9%	1,158	6.4%
MIAMI INTERNATIONAL AIRPORT	1,176	1,269	-7.4%	1,711	-31.3%	1,214	-3.1%	1,659	-29.1%
NORTHSIDE	1,633	1,181	38.3%	1,476	10.7%	1,343	21.6%	1,324	23.3%
OKEECHOBEE	955	811	17.7%	1,164	-18.0%	908	5.1%	1,044	-8.5%
OVERTOWN / ARENA	1,684	1,118	50.6%	2,274	-26.0%	1,679	0.2%	1,961	-14.2%
PALMETTO	1,374	1,107	24.1%	1,543	-11.0%	1,244	10.4%	1,324	3.8%
SANTA CLARA	837	604	38.5%	812	3.1%	691	21.2%	726	15.3%
SOUTH MIAMI	2,032	1,777	14.4%	3,015	-32.6%	1,903	6.8%	2,596	-21.7%
TRI-RAIL	1,333	1,014	31.4%	1,207	10.4%	1,140	16.9%	1,099	21.3%
UNIVERSITY	1,510	1,331	13.5%	2,784	-45.8%	1,997	-24.4%	1,723	-12.3%
VIZCAYA	1,399	1,044	34.0%	1,390	0.6%	1,169	19.7%	1,187	17.8%
TOTAL	48,271	42,582	13.4%	67,367	-28.3%	46,807	3.1%	58,274	-17.2%

(†) In this table and those which follow, “YOY” stands for “year-over-year”, “MOM” for “month-over-month” and “YO4Y” for “year over four years”, i.e., current month vs 12 months prior, one month prior, and 48 months prior, respectively. The February 2020 numbers serve as a pre-pandemic benchmark.

METRORAIL AVERAGE SATURDAY BOARDINGS BY STATION

Saturdays	Average Saturday	Average Saturday	Percent Change	Average Saturday	Percent Change	Average Saturday	Percent Change	Average Saturday	Percent Change
STATIONS	Dec-23	Dec-22	YOY	Feb-20	Current vs Feb-20	Nov-23	MOM	Dec-19	YO4Y
ALLAPATTAH	1,128	903	24.9%	1,051	7.2%	971	16.1%	1,024	10.2%
BRICKELL	3,188	2,277	40.0%	2,811	13.4%	1,984	60.7%	2,713	17.5%
BROWNSVILLE	423	409	3.5%	520	-18.6%	390	8.5%	507	-16.6%
CIVIC CENTER	916	635	44.2%	959	-4.5%	824	11.2%	904	1.4%
COCONUT GROVE	1,029	691	49.0%	928	10.9%	832	23.7%	876	17.5%
CULMER	616	421	46.2%	721	-14.5%	517	19.1%	704	-12.5%
DADELAND NORTH	1,190	1,324	-10.1%	1,994	-40.3%	1,447	-17.8%	1,985	-40.1%
DADELAND SOUTH	2,053	1,781	15.3%	2,625	-21.8%	1,864	10.2%	2,554	-19.6%
DOUGLAS ROAD	1,571	1,083	45.1%	1,319	19.1%	1,309	20.0%	1,291	21.7%
DR. MARTIN LUTHER KING, JR.	787	440	79.0%	625	26.0%	513	53.5%	607	29.7%
EARLINGTON HEIGHTS	1,025	705	45.4%	935	9.6%	883	16.0%	900	13.9%
GOVERNMENT CENTER	3,210	2,905	10.5%	4,262	-24.7%	3,008	6.7%	3,668	-12.5%
HIALEAH	645	521	23.9%	583	10.7%	528	22.1%	570	13.3%
MIAMI INTERNATIONAL AIRPORT	951	988	-3.8%	1,330	-28.5%	840	13.2%	1,283	-25.9%
NORTHSIDE	1,054	736	43.2%	878	20.0%	892	18.1%	801	31.6%
OKEECHOBEE	438	283	54.9%	408	7.3%	386	13.6%	386	13.7%
OVERTOWN / ARENA	759	385	97.4%	678	12.0%	615	23.4%	570	33.3%
PALMETTO	544	349	55.8%	458	18.7%	469	16.0%	392	38.9%
SANTA CLARA	485	314	54.8%	422	15.1%	397	22.4%	419	15.8%
SOUTH MIAMI	1,025	853	20.2%	1,256	-18.4%	962	6.6%	1,147	-10.6%
TRI-RAIL	808	451	79.0%	614	31.5%	640	26.3%	557	45.1%
UNIVERSITY	643	450	42.9%	714	-9.9%	592	8.7%	532	21.0%
VIZCAYA	788	493	59.8%	622	26.7%	606	30.0%	601	31.0%
TOTAL	25,275	19,394	30.3%	26,714	-5.4%	21,465	17.7%	24,987	1.2%

METRORAIL AVERAGE SUNDAY BOARDINGS BY STATION

Sundays	Average Sunday	Average Sunday	Percent Change	Average Sunday	Percent Change	Average Sunday	Percent Change	Average Sunday	Percent Change
STATIONS	Dec-23	Dec-22	YOY	Feb-20	Current vs Feb-20	Nov-23	MOM	Dec-19	YO4Y
ALLAPATTAH	836	579	44.4%	791	5.7%	710	17.8%	765	9.3%
BRICKELL	2,350	1,627	44.4%	2,379	-1.2%	1,693	38.8%	2,049	14.7%
BROWNSVILLE	350	288	21.4%	406	-13.8%	290	20.7%	367	-4.7%
CIVIC CENTER	669	497	34.5%	791	-15.4%	626	6.9%	715	-6.5%
COCONUT GROVE	924	467	97.9%	838	10.3%	619	49.4%	683	35.4%
CULMER	494	307	61.0%	616	-19.8%	387	27.7%	563	-12.3%
DADELAND NORTH	958	905	5.8%	1,685	-43.1%	1,113	-13.9%	1,516	-36.8%
DADELAND SOUTH	1,673	1,229	36.2%	2,210	-24.3%	1,459	14.7%	2,050	-18.4%
DOUGLAS ROAD	1,304	773	68.6%	1,090	19.7%	953	36.8%	949	37.4%
DR. MARTIN LUTHER KING, JR.	497	342	45.1%	506	-1.9%	410	21.3%	467	6.3%
EARLINGTON HEIGHTS	805	490	64.4%	799	0.8%	620	29.9%	715	12.7%
GOVERNMENT CENTER	2,152	1,908	12.8%	4,044	-46.8%	2,383	-9.7%	2,848	-24.4%
HIALEAH	504	372	35.5%	472	6.8%	351	43.5%	442	14.0%
MIAMI INTERNATIONAL AIRPORT	938	879	6.7%	1,343	-30.1%	1,092	-14.1%	1,303	-28.0%
NORTHSIDE	792	515	53.9%	653	21.3%	680	16.4%	645	22.8%
OKEECHOBEE	321	175	83.4%	273	17.5%	239	34.6%	251	28.1%
OVERTOWN / ARENA	534	272	96.4%	544	-1.9%	477	11.9%	473	12.8%
PALMETTO	364	205	77.4%	336	8.1%	297	22.5%	254	43.1%
SANTA CLARA	324	209	54.8%	280	15.8%	241	34.3%	274	17.9%
SOUTH MIAMI	814	587	38.7%	987	-17.5%	722	12.7%	818	-0.5%
TRI-RAIL	599	311	92.6%	528	13.4%	520	15.2%	459	30.3%
UNIVERSITY	459	346	32.6%	608	-24.5%	467	-1.7%	380	20.9%
VIZCAYA	565	334	69.3%	524	7.8%	441	28.2%	458	23.4%
TOTAL	19,225	13,615	41.2%	22,701	-15.3%	16,787	14.5%	19,444	-1.1%

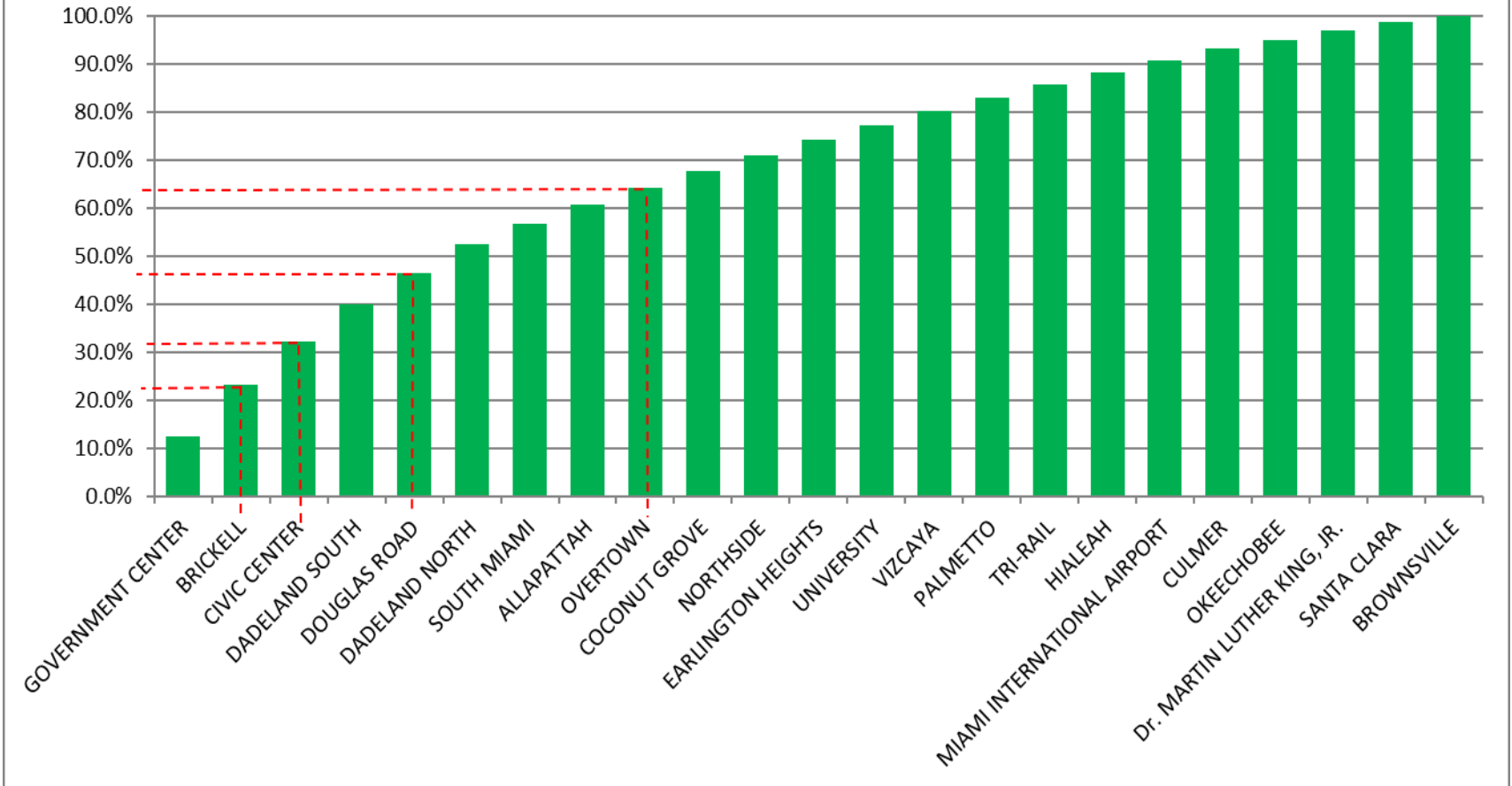
METRORAIL TOTAL MONTHLY BOARDINGS BY STATION

Monthly Totals	Total Month	Total Month	Percent Change	Total Month	Percent Change	Total Month	Percent Change	Total Month	Percent Change
	Dec-23	Dec-22	YOY	Feb-20	Current vs Feb-20	Nov-23	MOM	Dec-19	YO4Y
STATIONS	Dec-23	Dec-22	YOY	Feb-20	Current vs Feb-20	Nov-23	MOM	Dec-19	YO4Y
ALLAPATTAH	49,466	39,994	23.7%	46,868	5.5%	35,468	39.5%	46,115	7.3%
BRICKELL	135,159	115,008	17.5%	152,259	-11.2%	98,955	36.6%	140,626	-3.9%
BROWNSVILLE	12,734	17,853	-28.7%	21,285	-40.2%	13,018	-2.2%	20,907	-39.1%
CIVIC CENTER	93,969	77,321	21.5%	128,921	-27.1%	71,754	31.0%	115,225	-18.4%
COCONUT GROVE	45,152	33,558	34.5%	43,580	3.6%	30,660	47.3%	40,180	12.4%
CULMER	28,451	22,832	24.6%	33,497	-15.1%	20,015	42.1%	31,607	-10.0%
DADELAND NORTH	67,239	83,629	-19.6%	132,894	-49.4%	70,076	-4.0%	126,644	-46.9%
DADELAND SOUTH	94,684	100,175	-5.5%	162,416	-41.7%	80,936	17.0%	155,214	-39.0%
DOUGLAS ROAD	78,669	63,911	23.1%	82,141	-4.2%	54,965	43.1%	76,657	2.6%
DR. MARTIN LUTHER KING, JR.	26,150	20,738	26.1%	27,980	-6.5%	17,266	51.5%	27,876	-6.2%
EARLINGTON HEIGHTS	33,852	32,151	5.3%	40,697	-16.8%	29,337	15.4%	38,994	-13.2%
GOVERNMENT CENTER	147,694	145,455	1.5%	243,414	-39.3%	126,108	17.1%	220,083	-32.9%
HIALEAH	28,452	27,418	3.8%	29,516	-3.6%	18,384	54.8%	29,152	-2.4%
MIAMI INTERNATIONAL AIRPORT	34,093	36,132	-5.6%	46,115	-26.1%	29,066	17.3%	47,614	-28.4%
NORTHSIDE	42,349	31,039	36.4%	36,127	17.2%	29,410	44.0%	34,603	22.4%
OKEECHOBEE	23,245	19,471	19.4%	26,026	-10.7%	17,700	31.3%	24,935	-6.8%
OVERTOWN / ARENA	30,960	26,861	15.3%	49,911	-38.0%	32,046	-3.4%	46,185	-33.0%
PALMETTO	32,295	26,207	23.2%	33,944	-4.9%	23,848	35.4%	30,789	4.9%
SANTA CLARA	20,207	15,386	31.3%	19,245	5.0%	14,187	42.4%	18,484	9.3%
SOUTH MIAMI	50,366	44,694	12.7%	69,412	-27.4%	36,932	36.4%	63,913	-21.2%
TRI-RAIL	34,212	25,259	35.4%	29,120	17.5%	24,211	41.3%	27,850	22.8%
UNIVERSITY	33,325	31,891	4.5%	61,253	-45.6%	37,106	-10.2%	40,389	-17.5%
VIZCAYA	34,549	26,113	32.3%	32,497	6.3%	23,673	45.9%	29,886	15.6%
TOTAL	1,177,272	1,063,096	10.7%	1,549,118	-24.0%	935,121	25.9%	1,433,928	-17.9%

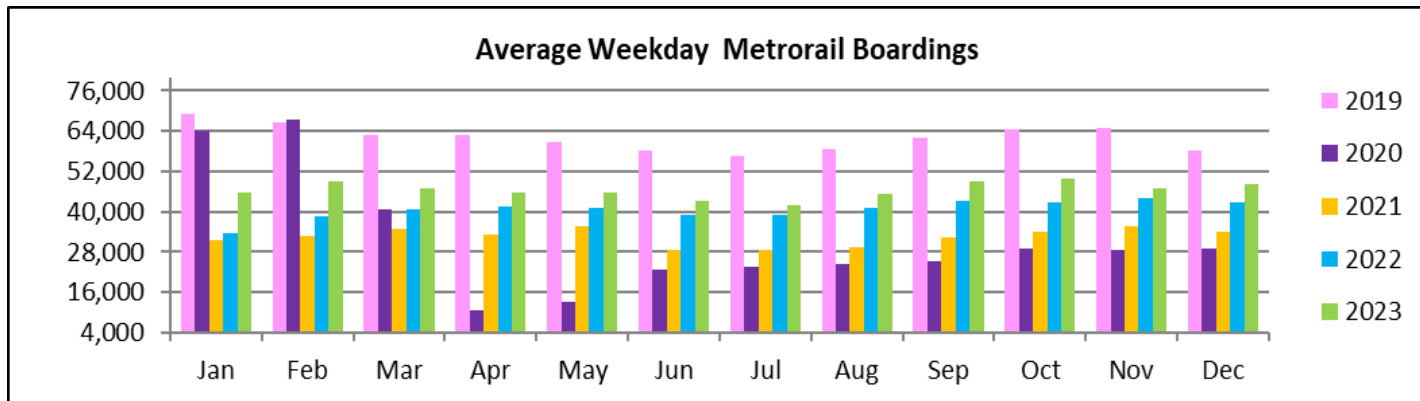
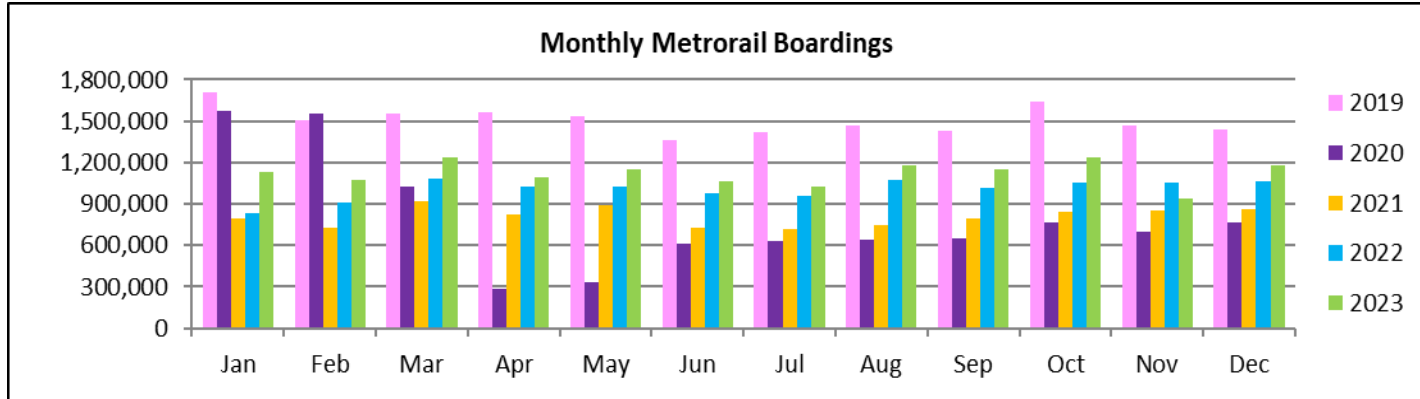
(†) A transition from Nextfare (faregate) data to a video camera system at all Rail stations was made necessary by the Better Bus Network launch on 11/13/2023 and its attendant free fares. This resulted in data gaps in Dec-23.

METRORAIL CUMULATIVE PERCENTAGE RIDERSHIP SHARE

**Metrorail - Cumulative Percentage Average Weekday Ridership Share
Top 1/4, 1/3, 1/2 and 2/3 of Stations**



TOTAL MONTHLY AND AVERAGE WEEKDAY RIDERSHIP YEAR OVER YEAR COMPARISON CHARTS – METRORAIL

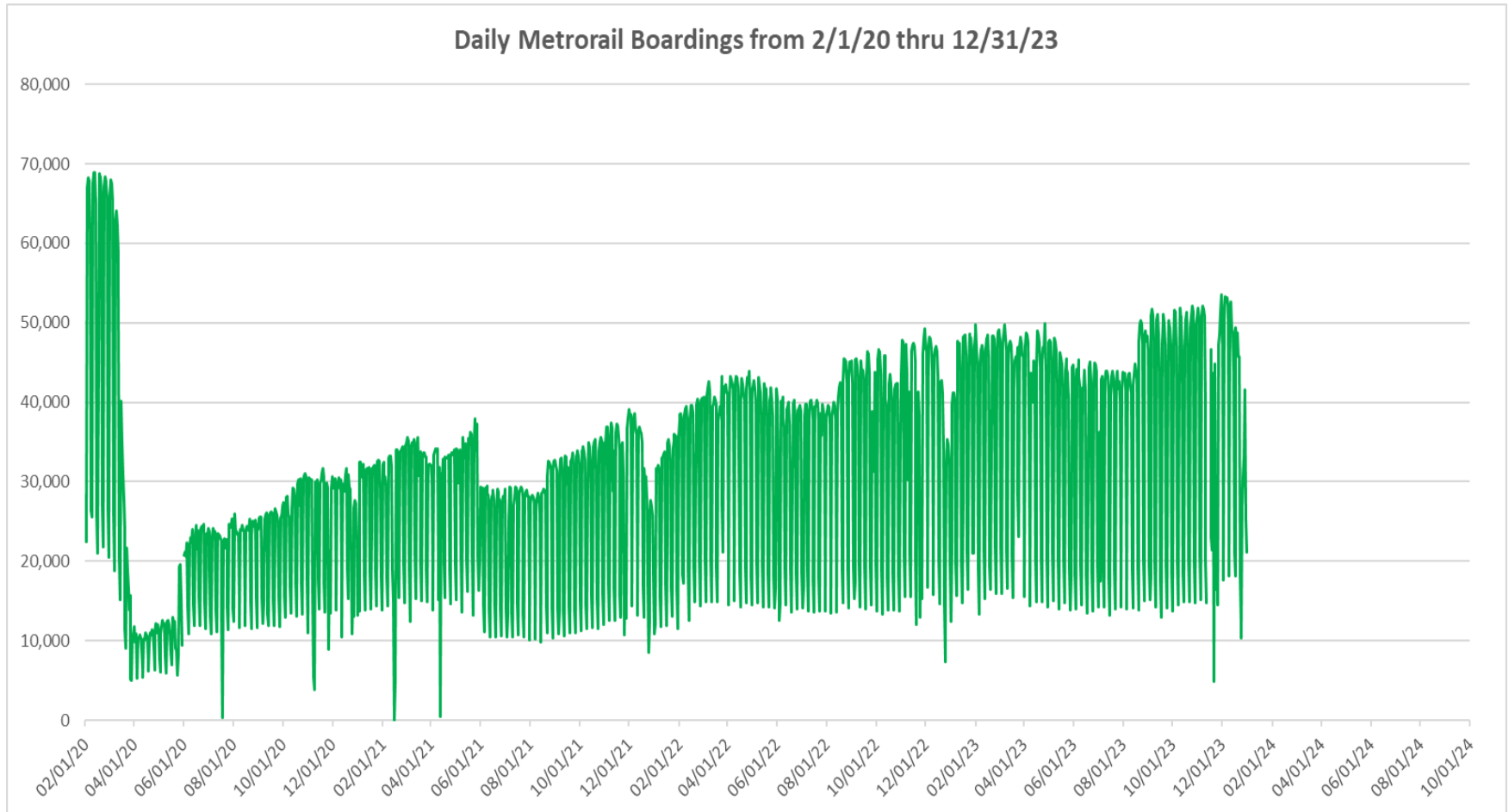


**“TOP 5 / BOTTOM 5” RAIL STATIONS AVERAGE WEEKDAY RIDERSHIP PERFORMANCE
YEAR OVER YEAR COMPARISONS**

Station	Dec-23	Dec-22	Absolute Delta (1)	Percent Delta
CIVIC CENTER	4,273	3,404	869	25.5%
BRICKELL	5,287	4,525	762	16.8%
DOUGLAS ROAD	3,188	2,589	599	23.1%
OVERTOWN	1,684	1,118	565	50.6%
NORTHSIDE	1,633	1,181	452	38.3%
DADELAND NORTH	2,812	3,433	-621	-18.1%
DADELAND SOUTH	3,750	4,032	-282	-7.0%
MIAMI INTERNATIONAL AIRPORT	1,176	1,269	-94	-7.4%
BROWNSVILLE	627	684	-58	-8.4%
OKEECHOBEE	955	811	144	17.7%

- (1) Averages rounded to the nearest boarding.
- (2) As a result of the SARS-CoV-2 pandemic, rides were fare-free beginning March 22, 2020, leading to the use of a video camera counter system from that date going forward. Fares were reinstated June 1, 2021, and ridership data from the faregate system rather than the video cameras resumed. Video camera use was reinstated a second time, for the launch of the Better Bus Network on 11/13/2023, and its attendant free fares.

DAILY METRORAIL RIDERSHIP SINCE FEBRUARY 1, 2020



- (1) There was no Metrobus, Metrorail and Metromover service on 5/31/20, as a safety precaution, and no service for any of the four modes on 9/28/22 as a result of Hurricane Ian..
- (2) The dip at the start of the second week of December 2020 is due to Hurricane Eta; these are *raw data* from the Unleash Live contractor AI video system.
- (3) The dip on 4/13/21 is due to a loss of connectivity at all stations, affecting a few stations over the next two days as well; a similar loss of connectivity is seen on 11/21/23.
- (4) The reduction seen beginning 6/1/21 is partly due to the resumption of fares and partly the result of resuming reporting Cubic faregate data rather than video camera counts.
- (5) As a result of free fares to launch the Better Bus Network, faregates are open beginning 11/13/23, and Unleash Live AI video system ridership counts are reported starting 11/17/23.
- (6) Periodic (weekly) variations are prominent, since weekday ridership is almost always significantly higher than weekend or holiday ridership.

METRORAIL PARKING PATRONAGE SUMMARY

December 2023

PARK-RIDE LOT	ACTUAL CAPACITY (1)	ACTUAL OCCUPANCY (2)	PERCENT OCCUPANCY
DADELAND SOUTH	1,260	684	54%
DADELAND NORTH	1,963	681	35%
SOUTH MIAMI	1,081	189	17%
UNIVERSITY	260	170	65%
COCONUT GROVE	100	20	20%
VIZCAYA	120	41	35%
CULMER	25	16	63%
SANTA CLARA	61	34	56%
ALLAPATTAH	74	6	8%
EARLINGTON HEIGHTS	361	137	38%
BROWNSVILLE	100	75	75%
DR. MARTIN LUTHER KING JR. (MDT)	62	0	0%
DR. MARTIN LUTHER KING JR. (GARAGE)	631	0	0%
NORTHSIDE	100	75	75%
HIALEAH	338	37	11%
OKEECHOBEE	1,398	130	9%
PALMETTO	700	135	19%
TOTAL	8,634	2,432	28%

- (1) Number of spaces could vary each week; shown are available spaces during final week of month, as submitted by DTPW Safety & Security office.
- (2) All sampled occupancy data provided by DTPW Safety & Security office; calculations are revisions to those submitted by that entity.
- (3) Daily averages rounded to nearest unit, with fewer counts at some stations due to shortage of DTPW Safety & Security office staff; calculations are based on sampled counted days only per raw data submitted, with resulting average daily occupancy shown.
- (*) Closed throughout the month, per the DTPW Safety & Security office.

Metromover

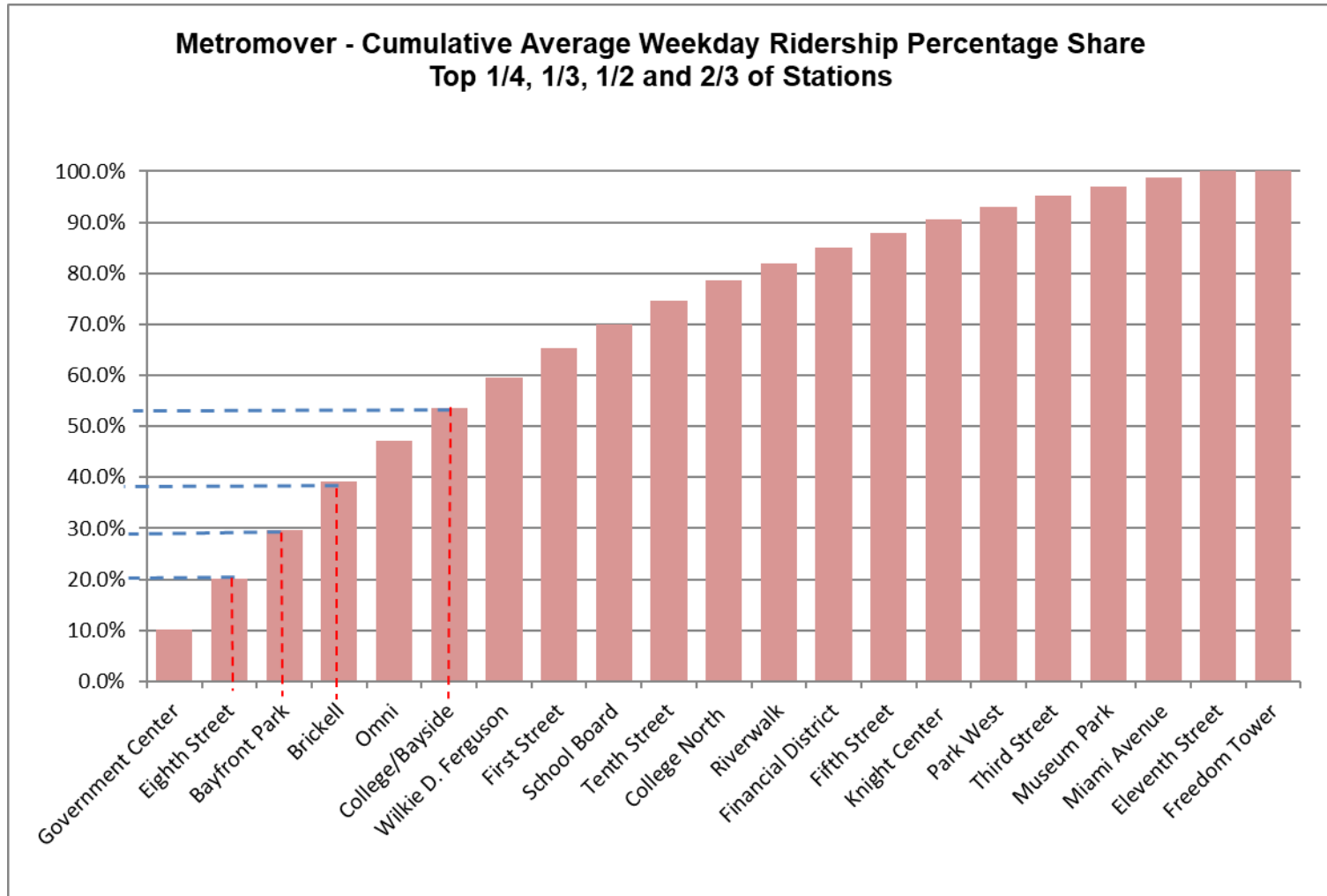


METROMOVER MONTHLY AND AVERAGE DAILY BOARDINGS BY STATION

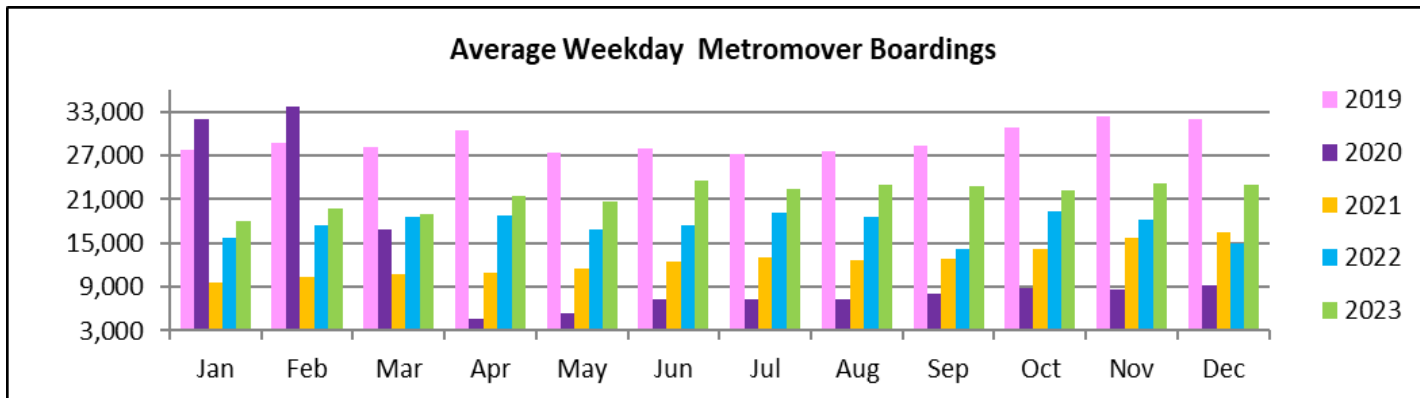
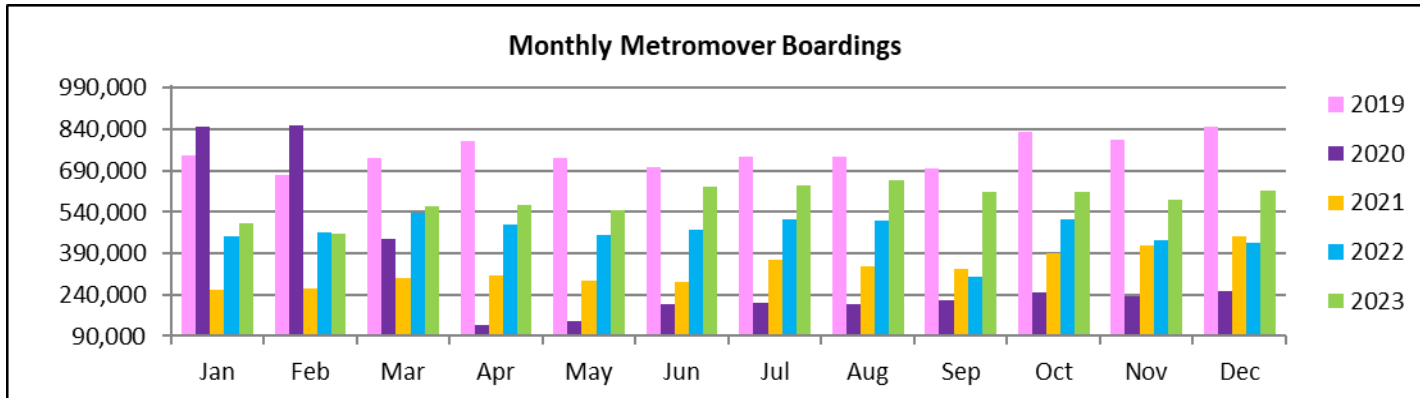
	Average Weekday	Average Weekday	Percent Change	Average Saturday	Average Saturday	Percent Change	Average Sunday	Average Sunday	Percent Change	Total Monthly	Total Monthly	Percent Change
STATIONS	Dec-23	Dec-22	23 vs 22	Dec-23	Dec-22	23 vs 22	Dec-23	Dec-22	23 vs 22	Dec-23	Dec-22	23 vs 22
School Board	1,089	310	250.9%	788	305	158.6%	994	206	381.7%	31,586	9,100	247.1%
Omni	1,858	1,605	15.8%	1,496	1,391	7.5%	1,666	1,107	50.5%	54,151	46,240	17.1%
Museum Park	412	381	8.1%	446	371	20.1%	346	339	2.1%	12,213	11,988	1.9%
Eleventh Street	301	303	-0.9%	287	301	-4.5%	310	194	60.2%	9,252	8,985	3.0%
Park West	577	740	-22.0%	505	571	-11.5%	437	393	11.2%	16,816	20,910	-19.6%
Freedom Tower												
Government Center	2,319			1,992			2,325			26,330		
Miami Avenue	373			311			305			10,736		
Third Street	508	240	111.3%	533	187	184.2%	559	222	152.3%	15,990	7,100	125.2%
Knight Center	593	541	9.6%	353	360	-1.9%	335	286	17.4%	15,635	14,702	6.3%
Bayfront Park	2,224	2,071	7.4%	1,719	2,326	-26.1%	2,525	1,295	94.9%	67,381	61,826	9.0%
First Street	1,323			1,102			1,061			38,113		
College/Bayside	1,471	1,541	-4.6%	1,281	1,307	-2.0%	1,387	1,124	23.4%	44,106	44,795	-1.5%
College North	916	864	6.0%	557	599	-7.0%	525	459	14.4%	24,173	23,662	2.2%
Wilkie D. Ferguson	1,367			962			947			37,554		
Riverwalk	771	477	61.7%	500	355	40.9%	585	271	116.2%	21,373	13,416	59.3%
Fifth Street	653	428	52.5%	482	354	35.9%	462	307	50.6%	18,159	12,408	46.3%
Eighth Street	2,289	1,437	59.3%	1,819	1,316	38.2%	1,773	788	125.0%	65,068	41,372	57.3%
Tenth Street	1,048	993	5.5%	761	766	-0.6%	740	609	21.5%	29,040	27,906	4.1%
Brickell	2,155	1,995	8.0%	1,408	1,624	-13.3%	1,605	1,215	32.1%	59,415	56,269	5.6%
Financial District	751	962	-21.9%	397	586	-32.3%	405	431	-6.0%	19,364	25,394	-23.7%
TOTAL	22,998	14,889	54.5%	17,697	12,720	39.1%	19,292	9,244	108.7%	616,455	426,073	44.7%

(1) Several Metromover stations were closed for construction both years, with Miami Avenue and First Street experienced data outages due to installation of new equipment.

METROMOVER CUMULATIVE PERCENTAGE RIDERSHIP SHARE



TOTAL MONTHLY AND AVERAGE WEEKDAY RIDERSHIP YEAR OVER YEAR COMPARISON CHARTS – METROMOVER

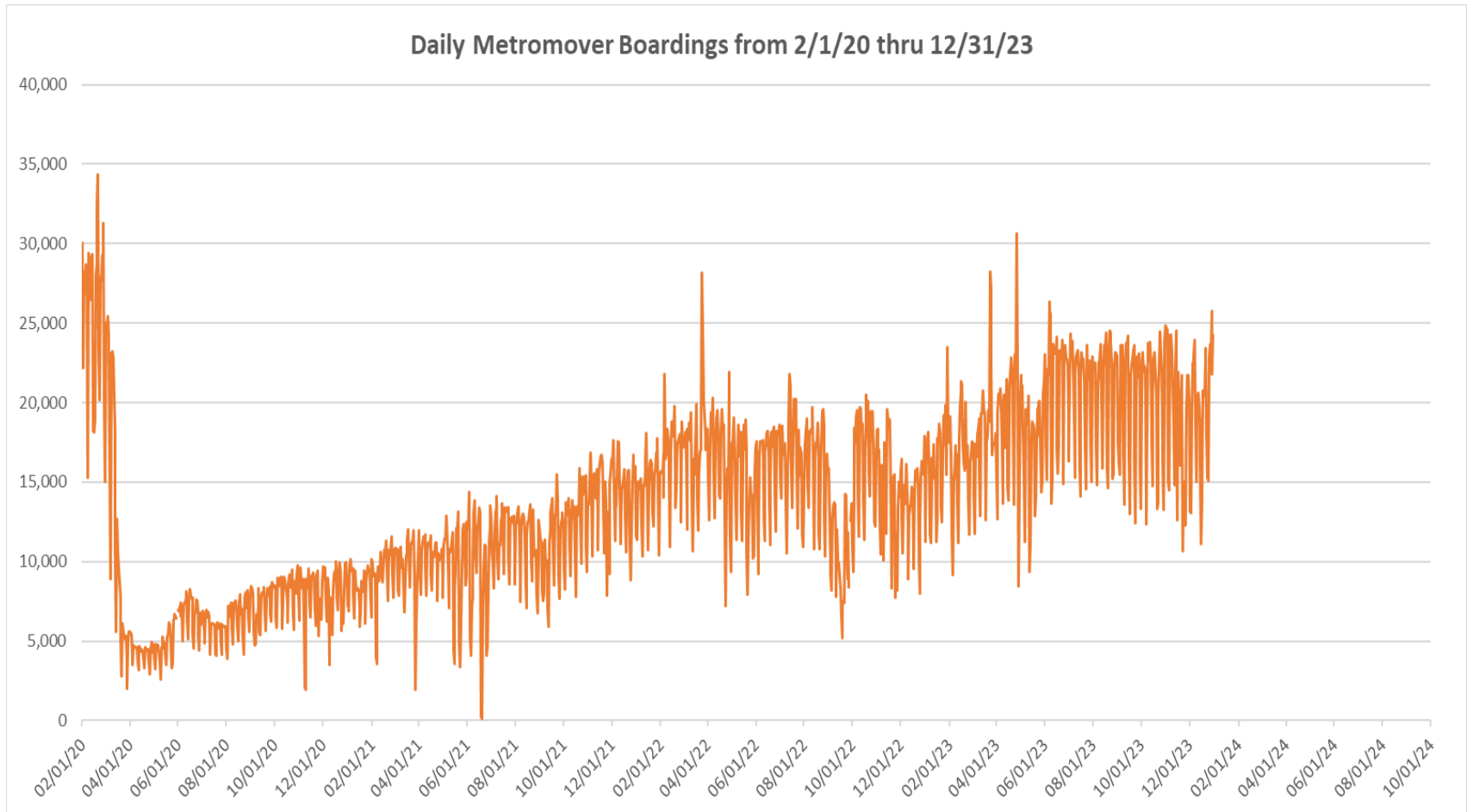


**“TOP 5 / BOTTOM 5” MOVER STATIONS AVERAGE WEEKDAY RIDERSHIP PERFORMANCE
YEAR OVER YEAR COMPARISONS**

Station	Dec-23	Dec-22	Absolute Delta (1)	Percent Delta
Eighth Street	2,289	1,437	852	59.3%
School Board	1,089	310	779	250.9%
Riverwalk	771	477	294	61.7%
Third Street	508	240	267	111.3%
Omni	1,858	1,605	254	15.8%
Financial District	751	962	-210	-21.9%
Park West	577	740	-163	-22.0%
College/Bayside	1,471	1,541	-70	-4.6%
Eleventh Street	301	303	-3	-0.9%
Museum Park	412	381	31	8.1%

(1) Averages rounded to the nearest boarding.

DAILY METROMOVER RIDERSHIP SINCE FEBRUARY 1, 2020



- (1) There was no Metrobus, Metrorail and Metromover service on 5/31/20, as a safety precaution, and no service for any of the four modes on 9/28/22 as a result of Hurricane Ian.
- (2) The dip at the start of the second week of December 2020 is due to Hurricane Eta; these are *raw data* from the UTA contractor APC system. Other more recent dips are due to various station closures (mostly on weekends) for system maintenance purposes.
- (3) Periodic (weekly) variations are prominent, since weekday ridership is almost always significantly higher than weekend or holiday ridership.

Special Transportation Services

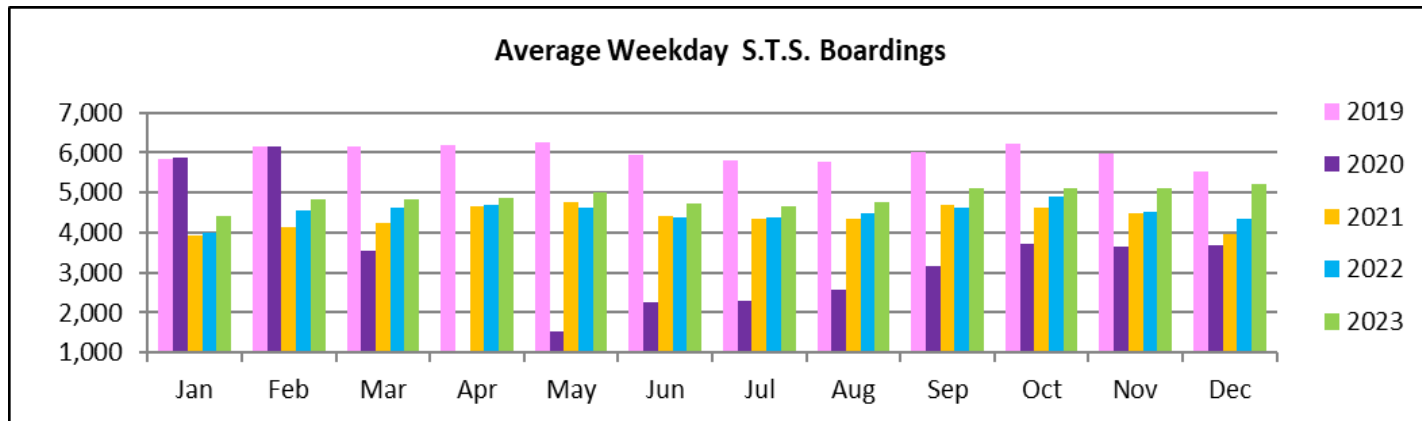
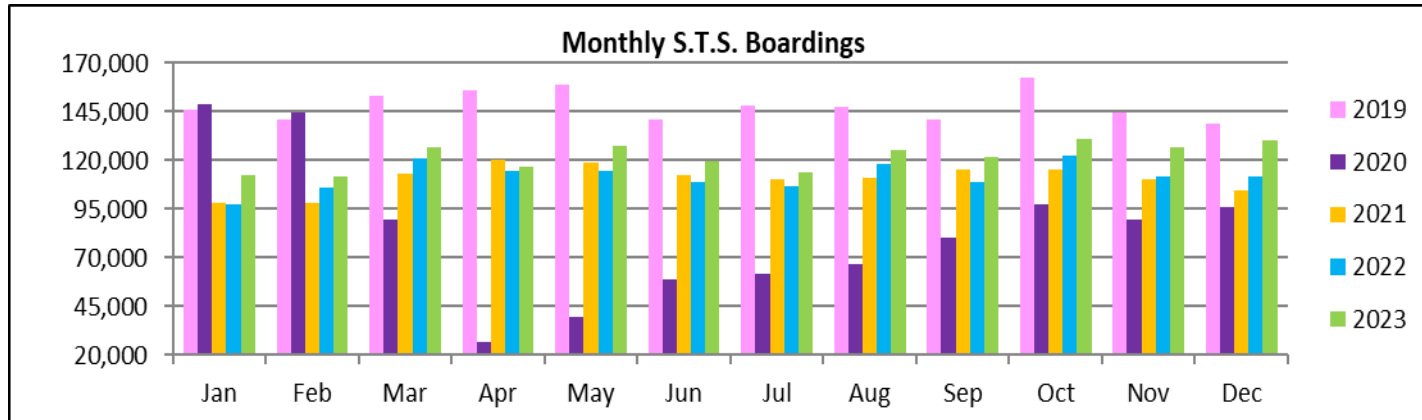


STS MONTHLY AND AVERAGE DAILY BOARDINGS
December 2023

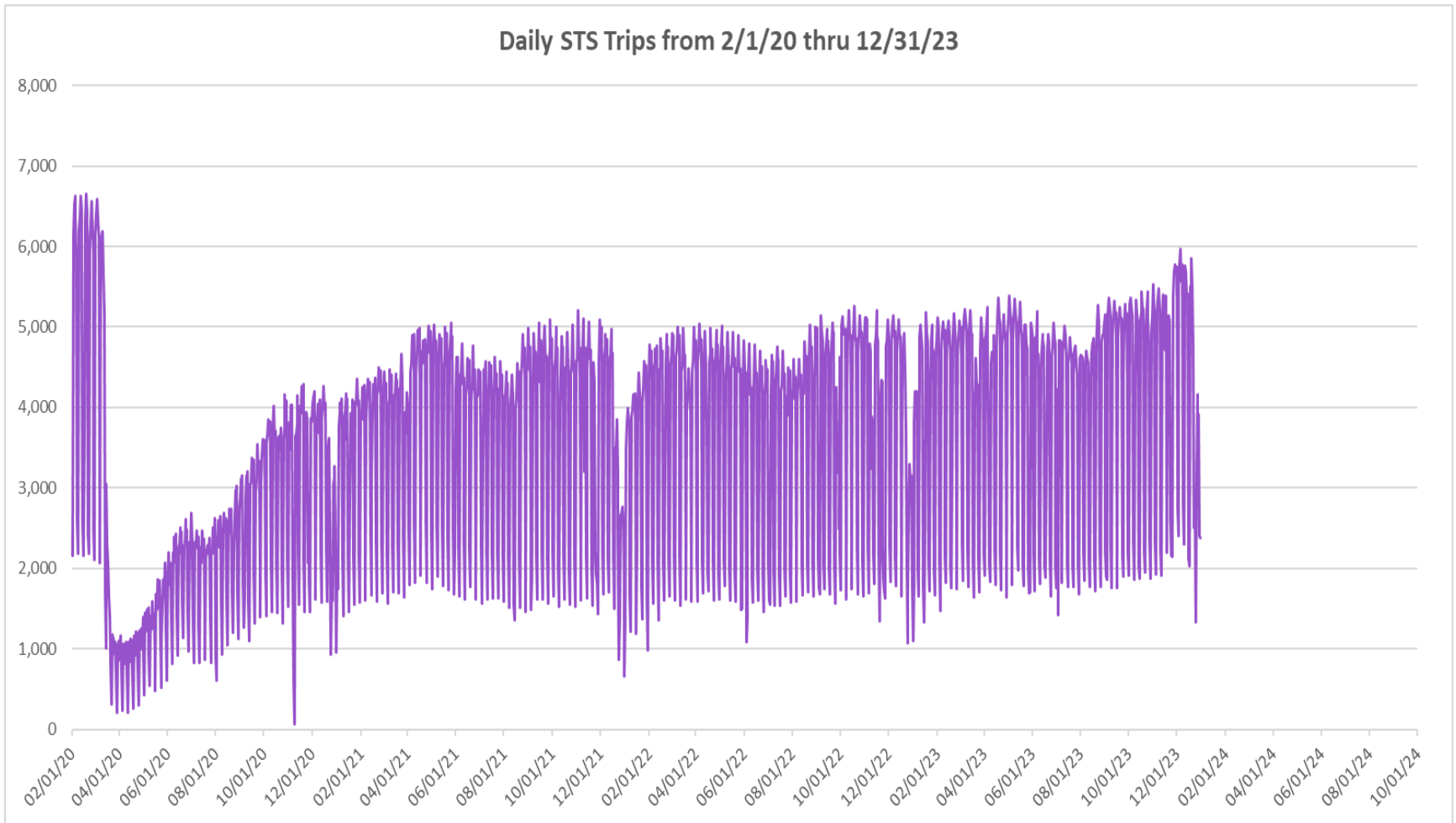
Measure	timeline	Ambulatory	Wheelchair	Total Clients (*)
Average Weekday	Dec-23	4,361	854	5,216
Average Saturday	Dec-23	2,083	423	2,506
Average Sunday	Dec-23	1,761	448	2,209
Total Monthly	Dec-23	108,203	21,890	130,093
Average Weekday	Dec-22	3,558	776	4,334
Average Saturday	Dec-22	1,680	383	2,064
Average Sunday	Dec-22	1,276	312	1,588
Total Monthly	Dec-22	91,773	20,246	112,019
Average Weekday	Dec-21	3,229	725	3,955
Average Saturday	Dec-21	1,443	382	1,825
Average Sunday	Dec-21	1,263	298	1,560
Total Monthly	Dec-21	85,094	19,402	104,496
% Change Current vs. December 2022 Weekday		22.6%	10.0%	20.3%
% Change Current vs. December 2022 Saturday		23.9%	10.3%	21.4%
% Change Current vs. December 2022 Sunday		38.0%	43.5%	39.1%
% Change Current vs. December 2022 Month Total		17.9%	8.1%	16.1%
% Change Current vs. December 2021 Weekday		35.1%	17.8%	31.9%
% Change Current vs. December 2021 Saturday		44.3%	10.7%	37.3%
% Change Current vs. December 2021 Sunday		39.5%	50.5%	41.6%
% Change Current vs. December 2021 Month Total		27.2%	12.8%	24.5%

(*) Trip count data provided by STS contractor.

TOTAL MONTHLY AND AVERAGE WEEKDAY RIDERSHIP YEAR OVER YEAR COMPARISON CHARTS – SPECIAL TRANSPORTATION SERVICES (S.T.S.)

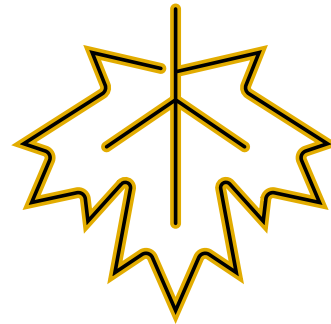
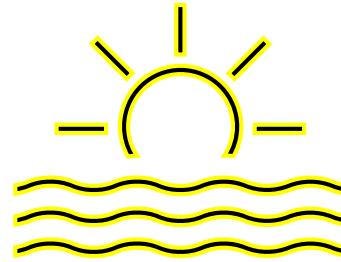
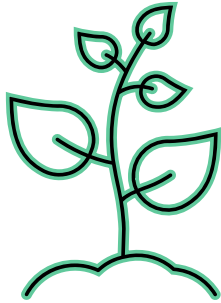


DAILY STS RIDERSHIP SINCE FEBRUARY 1, 2020

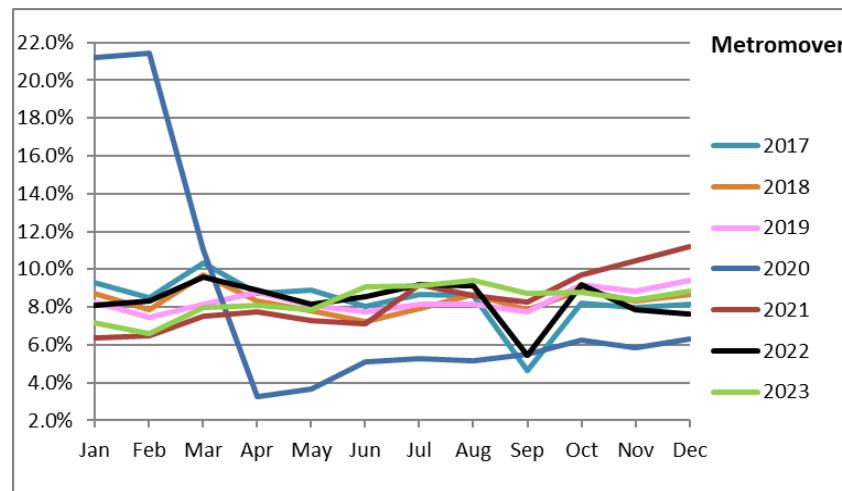
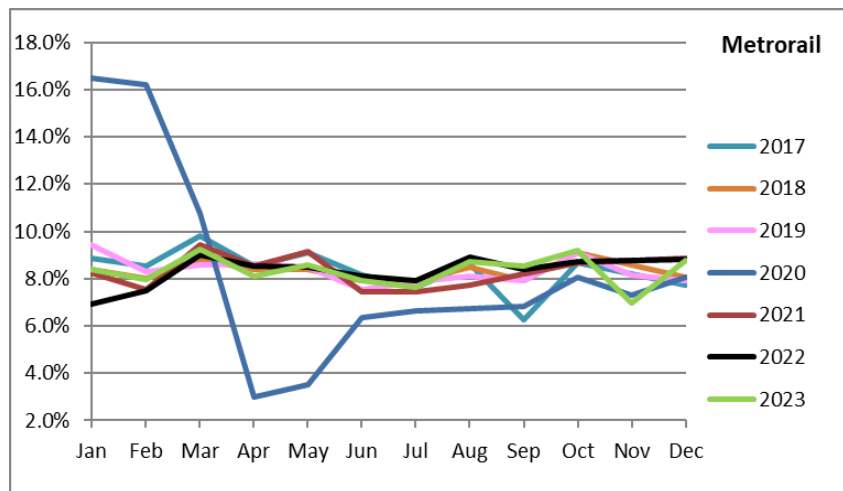
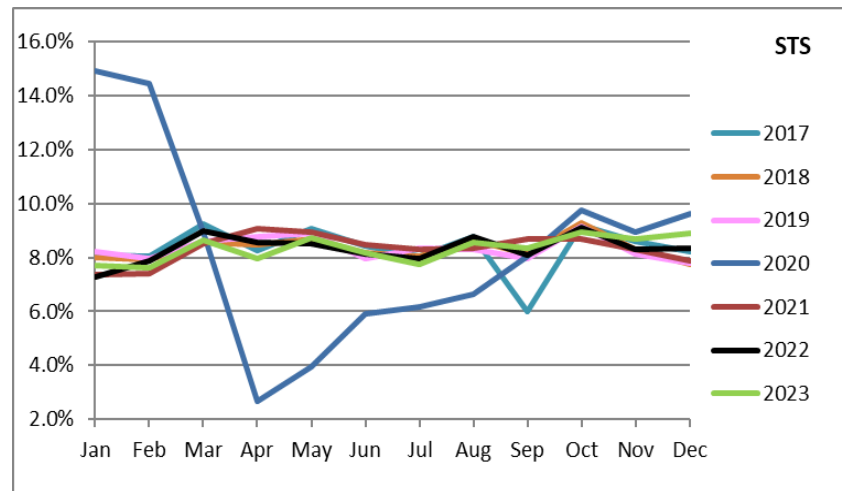
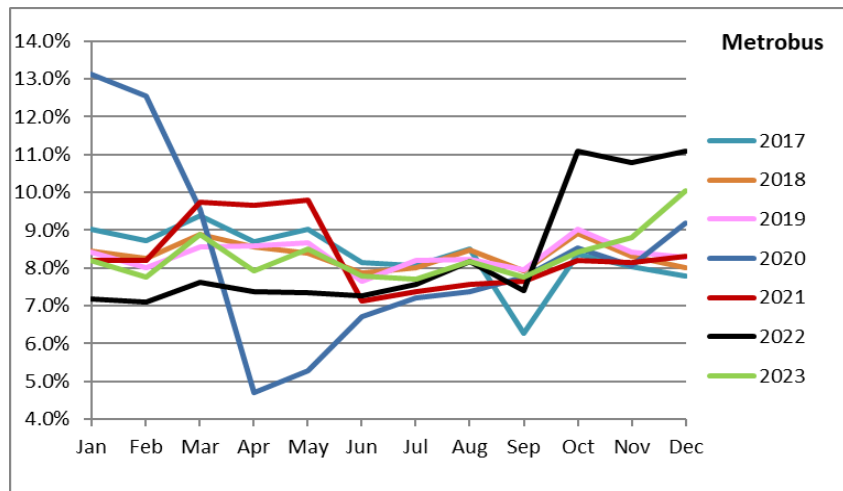


- (1) There was no service (for any of the four modes) on 9/28/22 as a result of Hurricane Ian.
- (2) The dip at the start of the second week of December 2020 is due to Hurricane Eta.
- (3) Periodic (weekly) variations are prominent, since weekday ridership is almost always significantly higher than weekend or holiday ridership.

Ridership Seasonality



RIDERSHIP SEASONALITY – PERCENT RIDERSHIP SHARE BY MONTH AND CALENDAR YEAR FOR EACH MODE



Note: the prominent dips seen in the fall of 2017 and beginning in the spring of 2020 are due to Hurricane Irma and the SARS-CoV-2 pandemic, respectively. Reductions in Bus and Rail ridership share seen beginning in June 2021 are due to reinstatement of fares as well changes in reporting tools and datasets, as discussed earlier in this report. The prominent peaks on Metrobus seen beginning October 2022 are due from a changeover from farebox counts to ridership obtained from new automatic passenger counter (APC) technology, while the pronounced rise beginning November 2023 can be attributed to the launch of the Better Bus Network and the attendant free fares.