

MIAMI-DADE COUNTY
DEPARTMENT OF TRANSPORTATION AND PUBLIC WORKS (DTPW)

ADDENDUM NO. 2
June 24, 2022

PROJECT: Improvements to SW 87 Avenue Bridge Over Canal C-100
Project No. 20220010

BID DUE DATE: July 6, 2022; 02:00 P.M.

FROM: Miami-Dade County DTPW
Capital Improvements Division
111 NW First Street, 14th Floor
Miami, FL 33128
305.375.2930

TO: Prospective Bidders and Interested Parties

This Addendum forms part of the project solicitation documents and will be incorporated into the Contract Documents, as applicable. Insofar as the Original Contract Documents, Drawings and Specifications are inconsistent, this Addendum shall govern. Please acknowledge receipt of this Addendum, at the time of bid submittal to Miami-Dade County, in the space provided on the "Acknowledgement of Addenda Form" provided with the project solicitation documents. Failure to acknowledge receipt of all addenda may be cause for disqualification.

CHANGES TO THE INVITATION TO BID:

A. Estimated Value:

1. Estimated Value has been changed from \$3,076,803.00 to \$ \$2,901,818.71.

CHANGES TO THE BID FORM:

- B. Delete Bid Form dated 05/18/2022 in its entirety and replace it with the attached Revised Bid Form for Addendum No. 2, dated 6/24/2022. Changes are as follows:

1. Quantities from the following pay items were changed:
 - a. Pay Item No. 120-5, "Channel Excavation" changed its quantity from 649 CY to 703 CY.
 - b. Pay Item No. 334-1-13, "Traffic Level C, SP-12.5 (2)", changed its quantity from 420 TN to 459 TN.
 - c. Pay Item No 430-94-1-1 "Desilt Pipe (0" to 48")" changed its quantity from 351 LF to 81 LF.
 - d. Pay Item No 430-175-118 "Pipe Culvert, Optional Material, Round, 18"S/CD" changed its quantity from 81 LF. to 196 LF.
 - e. Pay Item No 430-175-124 "Pipe Culvert, Optional Material, Round, 24"S/CD" changed its quantity from 319 LF. to 409 LF.
 - f. Pay Item No. 522-1, "Concrete Sidewalk (4" Thick)", changed its quantity from 718 SY to 671 SY.
 - g. Pay Item No. 522-2, "Concrete Sidewalk (6" Thick) (Including Pedestrian Ramp)", changed its quantity from 137 SY to 184 SY.
 - h. Pay Item No. 530-3-4, "Riprap, Rubble, F&I, Ditch Lining", changed its quantity from 219 TN to 131 TN.

MIAMI-DADE COUNTY
DEPARTMENT OF TRANSPORTATION AND PUBLIC WORKS (DTPW)

ADDENDUM NO. 2
June 24, 2022

- i. Pay Item No. 530-4-6, "Articulated Concrete Block Revetment System, Thickness 6 inch", changed its quantity from 325 SY to 543 SY.
 - j. Pay Item No 530-74 "Bedding Stone" changed its quantity from 3 TN to 124 TN.
 - k. Pay Item No 536-1-1 "Guardrail-Roadway" changed its quantity from 371 LF. to 280 LF.
 - l. Pay Item No 455-113-24 "Auger Cast Piles For Bridges" changed its quantity from 1,166 LF. to 1,219 LF.
2. The following pay item was added:
- a. Pay Item No 108-1 "Protection Of Existing Structures - Inspection & Settlement Monitoring" with a quantity of 1 LS.

CHANGES TO THE PLANS:

- A. Volume 3 - Plans. Changes performed are enclosed in revision clouds.
- 1. Delete sheets no. 4, (Typical Section), 5 (Summary of Quantities and Pay Item Notes), 9 (General Notes), 11 (Roadway Plan), 19 (Drainage Structure Sheets), 24 (Drainage Details), 42 and 43 (Canal Cross Sections), 45 (Slope Protection Detail), 59 (Bridge Summary of Quantities), 60 (Plan and Elevation), 62 (Foundation Layout), and 63 (Pile Data Table), and replace with the attached Revised Sheets for Addendum No. 2.
 - 2. Add new sheet from the attached 48in Water Main for Addendum No. 2.
 - 3. Add new sheets from the attached FPL Pole Locations for Addendum No. 2.

END OF ADDENDUM NO. 2



Alfredo E. Muñoz, P.E.

Chief, Capital Improvements Division

Department of Transportation and Public Works (DTPW)

AM:kf

Cc:

Katherine Fernandez, DTPW
Roxana Bayarre, P.E., DTPW
Jacqueline Alcina, P.E., DTPW
Ryan Fisher, P.E., DTPW

Miguel Soria, P.E., DTPW
Laurie Johnson, ISD
Jhonnatan Escalante, ISD

Project File
Clerk of the board

Revised Bid Form for Addendum No. 2

Bid Form

PROJECT TITLE: Improvements to SW 87th Avenue Bridge Over C-100 Canal

PROJECT NO: 20220010

IF THIS PROPOSAL IS ACCEPTED, THE UNDERSIGNED AGREES TO COMPLETE ALL WORK UNDER THIS CONTRACT WITHIN SEVEN HUNDRED THIRTY (730) CALENDAR DAYS AFTER THE EFFECTIVE DATE ESTABLISHED IN THE "NOTICE TO PROCEED WITH CONTRACT WORK".

Item No	Quantity	Unit	Description	Written Unit Amount	Unit Price	Total
101-1-A	1.0	L.S.	Mobilization			
102-1A	1.0	L.S.	MAINTENANCE OF TRAFFIC			
104-11	112.0	L.F.	FLOATING SILT BARRIER (Includes maintenance, relocation and removal) (This item is contingent upon field conditions and may be increased, decreased or eliminated by the Engineer)			
104-13-1	2,706.0	L.F.	Staked Silt Fence			
104-18	8.0	EA.	Inlet Protection System			
108-1	1.0	L.S.	Protection of Existing Structures –Inspection and Settlement Monitoring			
110-1-1B	1.0	L.S.	CLEARING AND GRUBBING			
110-22A	5.0	EA	Tree Root and Branch Pruning			
120-1	474.0	C.Y.	REGULAR EXCAVATION			
120-4	3,629.0	C.Y.	SUBSOIL EXCAVATION (This item is contingent upon the actual field conditions and may be increased, decreased or eliminated by the Engineer)			
120-5	703.0	C.Y.	CHANNEL EXCAVATION			
120-6	5,416.0	C.Y.	EMBANKMENT (This item is contingent upon field conditions and may be increased, decreased or eliminated by the Engineer)			

CSCCRP_PROJECT_BID_ITEMS

06/24/2022 04:49 PM

Bidder must fill-in completely the next page for the bid to be valid.

Page 1 of 10

Revised Bid Form for Addendum No. 2

Bid Form

PROJECT TITLE: Improvements to SW 87th Avenue Bridge Over C-100 Canal

PROJECT NO: 20220010

IF THIS PROPOSAL IS ACCEPTED, THE UNDERSIGNED AGREES TO COMPLETE ALL WORK UNDER THIS CONTRACT WITHIN SEVEN HUNDRED THIRTY (730) CALENDAR DAYS AFTER THE EFFECTIVE DATE ESTABLISHED IN THE "NOTICE TO PROCEED WITH CONTRACT WORK".

Item No	Quantity	Unit	Description	Written Unit Amount	Unit Price	Total
160-4	4,381.0	S.Y.	TYPE "B" STABILIZATION (12" Thick) (Min. C.B.R. 30)			
210-1-2	4,068.0	S.Y.	LIMEROCK BASE (8" double course) (Primed)			
327-70-01	327.0	S.Y.	MILLING, 1" AVERAGE DEPTH			
334-1-13	459.0	TON	SUPERPAVE ASPHALTIC CONCRETE (Traffic C)			
337-7-82	228.0	TON	ASPHALT CONCRETE FRICTION COURSE, TRAFFIC C, FC-9.5, PG 76-22			
339-1	7.0	TON	MISCELLANEOUS ASPHALT PAVEMENT			
400-0-11	133.0	C.Y.	CONCRETE CLASS NS, GRAVITY WALL.			
400-2-10	175.6	C.Y.	CLASS II CONCRETE(APPROACH SLABS)			
400-2-5B	242.0	C.Y.	CONCRETE CLASS II (SUBSTRUCTURE)			
400-4-5	161.0	C.Y.	CONCRETE CLASS IV (SUBSTRUCTURE)			
400-4-47	164.0	C.Y.	Concrete Class IV, Cast in Place Topping with Shrinkage Reducing Admixture			
400-7-1	162.2	S.Y.	Bridge Deck Grooving			

CSCCRP_PROJECT_BID_ITEMS

06/24/2022 04:49 PM

Bidder must fill-in completely the next page for the bid to be valid.

Page 2 of 10

Revised Bid Form for Addendum No. 2

Bid Form

PROJECT TITLE: Improvements to SW 87th Avenue Bridge Over C-100 Canal

PROJECT NO: 20220010

IF THIS PROPOSAL IS ACCEPTED, THE UNDERSIGNED AGREES TO COMPLETE ALL WORK UNDER THIS CONTRACT WITHIN SEVEN HUNDRED THIRTY (730) CALENDAR DAYS AFTER THE EFFECTIVE DATE ESTABLISHED IN THE "NOTICE TO PROCEED WITH CONTRACT WORK".

Item No	Quantity	Unit	Description	Written Unit Amount	Unit Price	Total
400-9-1	95.8	S.Y.	Bridge Deck Planing			
400-148	6.2	CF	Plain Neoprene Bearing Pads			
415-1-4	28,927.0	LB	REINFORCING STEEL (Superstructure)			
415-1-5	25,956.0	LB	REINFORCING STEEL (Substructure)			
415-1-9	26,924.0	LB	REINFORCING STEEL(APPROACH SLABS)			
425-1-201	3.0	EA.	INLETS (Curb) Type (P-9) (< 10')			
425-1-479	3.0	EA	Inlets, Curb, Type 7, Modify			
425-1-521	2.0	EA.	INLET {(DITCH BOTTOM)(TYPE C) (INCL. inlet Pav't. if required)}			
425-1-541A	1.0	EA	Inlets, Ditch Bottom, Type D, <10'			
425-1-902B	1.0	EA.	INLETS (Special) (>10')			
425-2-041	2.0	EA.	MANHOLE P-7<10'			
425-2-041A	4.0	EA.	MANHOLE P-7 > 10'			

Revised Bid Form for Addendum No. 2

Bid Form

PROJECT TITLE: Improvements to SW 87th Avenue Bridge Over C-100 Canal

PROJECT NO: 20220010

IF THIS PROPOSAL IS ACCEPTED, THE UNDERSIGNED AGREES TO COMPLETE ALL WORK UNDER THIS CONTRACT WITHIN SEVEN HUNDRED THIRTY (730) CALENDAR DAYS AFTER THE EFFECTIVE DATE ESTABLISHED IN THE "NOTICE TO PROCEED WITH CONTRACT WORK".

Item No	Quantity	Unit	Description	Written Unit Amount	Unit Price	Total
425-5	2.0	EA.	ADJUST MANHOLE (This item is contingent upon field conditions and may be increased, decreased or eliminated by the Engineer)			
430-175-118	196.0	L.F.	PIPE CULVERT OPTIONAL MATERIAL, Round Shape, 18"			
430-175-124	409.0	L.F.	PIPE CULVERT OPTIONAL MATERIAL, Round Shape, 24"			
430-175-148	16.0	L.F.	Pipe Culvert, Optional Material, Round, 48" S/CD			
430-175-218	20.0	L.F.	PIPE CULVERT,OPTIONAL MATERIAL,Other Elip/Arch, 18"			
430-524-100	1.0	EA	Straight Concrete Endwalls, 24", Single, Round			
430-94-1-1	81.0	L.F.	DESILT PIPE (0 TO 48")			
443-70-4	498.0	L.F.	EXFILTRATION DRAIN (24" DIAMETER) (BITUMINOUS COATED CORRUGATED STEEL PIPE CULVERT) (2 2/3" X 1/2", 16 GAUGE) (Includes the cost of perforated pipe, ballast rock, excavation and backfilling with select fill material)			
450-8-24	957.0	L.F.	Prestressed Beam: Florida Slab Beam, Beam Depth 15" Carbon Steel, Width 58-60"			
455-113-24	1,219.0	L.F.	Auger Cast Pile for Bidges, 24" Diameter			
455-147-1	2.0	EA	Thermal Integrity Testing, Up to 4' Shaft Diameter			
458-1-11	127.0	L.F.	BRIDGE DECK EXPANSION JOINT (New Construction- F&I) (Poured Joint with Backer Rod)			

CSCCRP_PROJECT_BID_ITEMS

06/24/2022 04:49 PM

Bidder must fill-in completely the next page for the bid to be valid.

Page 4 of 10

Revised Bid Form for Addendum No. 2

Bid Form

PROJECT TITLE: Improvements to SW 87th Avenue Bridge Over C-100 Canal

PROJECT NO: 20220010

IF THIS PROPOSAL IS ACCEPTED, THE UNDERSIGNED AGREES TO COMPLETE ALL WORK UNDER THIS CONTRACT WITHIN SEVEN HUNDRED THIRTY (730) CALENDAR DAYS AFTER THE EFFECTIVE DATE ESTABLISHED IN THE "NOTICE TO PROCEED WITH CONTRACT WORK".

Item No	Quantity	Unit	Description	Written Unit Amount	Unit Price	Total
460-5-1830	1.0	EA.	MANATEE GATE- (Pipe diameter 18" to 30", or equivalent)			
460-5-3648	1.0	EA.	MANATEE GATE - (Pipe diameters 36" to 48", or equivalent)			
515-4-1	198.0	L.F.	BULLET RAIL, SINGLE RAIL			
520-1-10	1,197.0	L.F.	CONCRETE CURB & GUTTER (Type F) (6" Curb, 18" Gutter) (Includes cost of limerock base and subgrade)			
520-70	235.0	S.Y.	Concrete Traffic Separator, Special Variable Width			
521-5-4	200.0	L.F.	Concrete Traffic Railing Barrier - Bridge (32" Vertical Face)			
522-1	671.0	S.Y.	CONCRETE SIDEWALK (4" Thick restoration and new, Class I Concrete, 3000 P.S.I.) (including pedestrian ramps and sidewalk curbs)			
522-2	184.0	S.Y.	CONCRETE SIDEWALK (6" Thick, 3000 P.S.I. concrete at 28 days) (including pedestrian ramps and sidewalk curbs)			
527-2	235.0	S.F.	DETECTABLE WARNING ON WALKING SURFACE			
530-3-4	131.0	TON	Riprap, Rubble, F&I, Ditch Lining			
530-4-6	543.0	S.Y.	Articulating Concrete Block Revetment System, Thickness 6"			
530-74	124.0	TON	BEDDING STONE (FDOT 530-2.3)			

CSCCRP_PROJECT_BID_ITEMS

06/24/2022 04:49 PM

Bidder must fill-in completely the next page for the bid to be valid.

Page 5 of 10

Revised Bid Form for Addendum No. 2

Bid Form

PROJECT TITLE: Improvements to SW 87th Avenue Bridge Over C-100 Canal

PROJECT NO: 20220010

IF THIS PROPOSAL IS ACCEPTED, THE UNDERSIGNED AGREES TO COMPLETE ALL WORK UNDER THIS CONTRACT WITHIN SEVEN HUNDRED THIRTY (730) CALENDAR DAYS AFTER THE EFFECTIVE DATE ESTABLISHED IN THE "NOTICE TO PROCEED WITH CONTRACT WORK".

Item No	Quantity	Unit	Description	Written Unit Amount	Unit Price	Total
536-1-1	280.0	L.F.	GUARDRAIL (Roadway) (Includes the cost of shop bent panels and end anchorage assembly)			
536-73	139.0	L.F.	GUARDRAIL REMOVAL (Includes delivery and unloading at M-DPW 58th street yard)			
548-12	271.0	S.F.	RETAINING WALL SYSTEM, Permanant, Excluding Barrier			
550-10-928	180.0	L.F.	FENCING (Type Special) (5.1' to 6' Height) (Reset existing)			
550-60-915	1.0	L.S.	SFWM ACCESS GATE			
575-1-1	1,082.0	S.Y.	SODDING (Pensacola Bahia or match existing) (includes watering)			
580-1-1	1.0	L.S.	LANDSCAPE COMPLETE- SMALL PLANTS (Successful bidder to submit Schedule of Values at pre-construction meeting)			
580-1-2	1.0	L.S.	LANDSCAPE COMPLETE- LARGE PLANTS (Successful bidder to submit Schedule of Values at pre-construction meeting)			
580-3-8	4.0	EA	Decorative Urn Planter			
580-327-10	7.0	EA.	TREE REMOVAL (Under 12" to 6")			
580-327-23	8.0	EA.	RELOCATION OF TREES (Greater than 12" diameter up to 24" diameter)			
630-2-11	309.0	L.F.	CONDUIT, Furnish & Install, Open Trench			

CSCCRP_PROJECT_BID_ITEMS

06/24/2022 04:49 PM

Bidder must fill-in completely the next page for the bid to be valid.

Page 6 of 10

Revised Bid Form for Addendum No. 2

Bid Form

PROJECT TITLE: Improvements to SW 87th Avenue Bridge Over C-100 Canal

PROJECT NO: 20220010

IF THIS PROPOSAL IS ACCEPTED, THE UNDERSIGNED AGREES TO COMPLETE ALL WORK UNDER THIS CONTRACT WITHIN SEVEN HUNDRED THIRTY (730) CALENDAR DAYS AFTER THE EFFECTIVE DATE ESTABLISHED IN THE "NOTICE TO PROCEED WITH CONTRACT WORK".

Item No	Quantity	Unit	Description	Written Unit Amount	Unit Price	Total
630-2-16	212.0	L.F.	Conduit, Furnish & Install, Embedded			
635-2-11	3.0	EA.	PULL & SPLICE BOX, Furnish & Install, 13" x 24" COVER SIZE			
635-3-13	6.0	EA	Junction Box, (F&I), Embedded			
639-1-111	1.0	AS.	ELECTRICAL POWER SERVICE, (Furnish & Install, Overhead, Meter Furnished by Power Company			
641-2-11	1.0	EA.	Prestressed Concrete Pole, F&I, Type P-II Pedestal			
700-1-60	16.0	AS.	SINGLE POST SIGN, REMOVE			
700-1-11B	9.0	AS.	SINGLE POST SIGN, F&I Ground Mount, Up to 12 SF			
700-13-15	5.0	EA	Retroreflective Sign Strip - F & I, 5'			
706-1-3	10.0	EA	Raised Pavement Marker, Type B			
710-11-121	2,905.0	L.F.	PAINTED PAVEMENT MARKINGS (Standard, White, solid, 6")			
710-11-123	288.0	L.F.	PAINTED PAVEMENT MARKINGS, STANDARD, WHITE, SOLID, 12"			
710-11-125	47.0	L.F.	PAINTED PAVEMENT MARKINGS (Standard, White, solid, 24")			

CSCCRP_PROJECT_BID_ITEMS

06/24/2022 04:49 PM

Bidder must fill-in completely the next page for the bid to be valid.

Page 7 of 10

Revised Bid Form for Addendum No. 2

Bid Form

PROJECT TITLE: Improvements to SW 87th Avenue Bridge Over C-100 Canal

PROJECT NO: 20220010

IF THIS PROPOSAL IS ACCEPTED, THE UNDERSIGNED AGREES TO COMPLETE ALL WORK UNDER THIS CONTRACT WITHIN SEVEN HUNDRED THIRTY (730) CALENDAR DAYS AFTER THE EFFECTIVE DATE ESTABLISHED IN THE "NOTICE TO PROCEED WITH CONTRACT WORK".

Item No	Quantity	Unit	Description	Written Unit Amount	Unit Price	Total
710-11-141	211.0	L.F.	PAINTED PAVEMENT MARKINGS (Standard) (White) (Skip) (6")			
710-11-160	2.0	EA.	PAINTED PAVEMENT MARKINGS (Standard)(White)(Message)			
710-11-170	2.0	EA	PAINTED PAVEMENT MARKING (Standard) (White) (Arrows)			
710-11-221	1,690.0	L.F.	PAINTED PAVEMENT MARKINGS (Standard, Yellow, solid, 6")			
710-11-241B	475.0	L.F.	PAINTED PAVEMENT MARKINGS, Standard, Yellow, Skip 10'-30', 6"			
711-2	211.0	L.F.	SKIP TRAFFIC STRIPE (6' STRIPE, 10' SPACE) (WHITE THERMOPLASTIC) (6" WIDE)			
711-11-123	288.0	L.F.	THERMOPLASTIC (White) (Solid) (12")			
711-11-125	47.0	L.F.	THERMOPLASTIC (White) (Solid) (24")			
711-11-241	475.0	L.F.	THERMOPLASTIC (Yellow) (Skip) (6")			
711-14-160-Bike	4.0	EA	Thermoplastic, Preformed, White, Bicycle Message and Arrow			
711-15-201A	1,690.0	L.F.	Thermoplastic, Standard-Open Graded Asphalt Surfaces, Yellow, Solid, 6"			
711-16-101A	2,905.0	L.F.	THERMOPLASTIC, Standard, Other Surfaces, White, Solid, 6"			

Revised Bid Form for Addendum No. 2

Bid Form

PROJECT TITLE: Improvements to SW 87th Avenue Bridge Over C-100 Canal

PROJECT NO: 20220010

IF THIS PROPOSAL IS ACCEPTED, THE UNDERSIGNED AGREES TO COMPLETE ALL WORK UNDER THIS CONTRACT WITHIN SEVEN HUNDRED THIRTY (730) CALENDAR DAYS AFTER THE EFFECTIVE DATE ESTABLISHED IN THE "NOTICE TO PROCEED WITH CONTRACT WORK".

Item No	Quantity	Unit	Description	Written Unit Amount	Unit Price	Total
715-1-12	7,000.0	L.F.	LIGHTING - CONDUCTORS (F & I) (No. 8 to No. 6)			
715-7-11	1.0	EA.	LOAD CENTER (Includes Switch, Weatherhead & Wire at Service Point)			
715-11-115	6.0	EA.	Luminaire, F&I, Roadway, Wall Mount			

Total: _____

The bidder understands and agrees that the above total is inclusive of all work necessary to complete the job as described in the plans and specifications.

Quantities are established and are included only for the purpose of facilitating the uniform comparison of bids submitted. The County shall not be held responsible if the quantities are not accurate and all computations for compensation shall be based upon the actual work performed, whether greater or less than estimated quantities.

Tax Identification Number: _____

D.C. Certificate of competency No: _____

Bidder's Name: _____

Bidder's telephone Number: _____

Bidder's address: _____

Revised Bid Form for Addendum No. 2

Bid Form

PROJECT TITLE: Improvements to SW 87th Avenue Bridge Over C-100 Canal

PROJECT NO: 20220010

IF THIS PROPOSAL IS ACCEPTED, THE UNDERSIGNED AGREES TO COMPLETE ALL WORK UNDER THIS CONTRACT WITHIN SEVEN HUNDRED THIRTY (730) CALENDAR DAYS AFTER THE EFFECTIVE DATE ESTABLISHED IN THE "NOTICE TO PROCEED WITH CONTRACT WORK".

BIDDER ACKNOWLEDGES THAT INCLUDED IN THE VARIOUS ITEMS OF THE PROPOSAL AND IN THE TOTAL BID PRICE ARE COSTS FOR COMPLYING WITH THE FLORIDA TRENCH SAFETY ACT (90-96), LAWS OF FLA. EFFECTIVE OCTOBER 1st, 1990. THE BIDDER FURTHER IDENTIFIES THE COSTS TO BE SUMMARIZED BELOW:

	Trench Safety Measure (Description)	Units of Measure (LF, SY)	Unit (Quantity)	Unit Cost	Extended Cost
A.					
B.					
C.					
D.					

FAILURE TO COMPLETE THE ABOVE MAY RESULT IN THE BID BEING DECLARED NON-RESPONSIVE

INDEX OF SHEETS

SHT. No.	SHEET DESCRIPTION
1	KEY SHEET
2	SIGNATURE SHEET
3-4	ROADWAY TYPICAL SECTION
5	SUMMARY OF QUANTITIES AND PAY ITEM NOTES
6	EXISTING DRAINAGE STRUCTURES
7	SUMMARY OF DRAINAGE STRUCTURES
8	PROJECT LAYOUT
9	GENERAL NOTES
10-12	ROADWAY PLAN
13-16	ROADWAY PROFILE
17-21	DRAINAGE STRUCTURE SHEETS
22-25	DRAINAGE DETAILS
26-40	CROSS SECTIONS
41-44	CANAL CROSS SECTIONS
45	SLOPE PROTECTION DETAIL
46-47	STORM WATER POLLUTION PREVENTION PLAN
48-49	SFWM D GATE DETAILS
50	FENCE DETAILS
51	SIGNING AND PAVEMENT MARKING QUANTITIES
52-54	SIGNING AND PAVEMENT MARKING PLAN
55-57	TEMPORARY TRAFFIC CONTROL PLAN
58	BRIDGE GENERAL NOTES
59	BRIDGE SUMMARY OF QUANTITIES
60	PLAN AND ELEVATION
61	BRIDGE TYPICAL SECTION
62	FOUNDATION LAYOUT
63	PILE DATA TABLE
64	END BENT 01
65	END BENT 02
66	END BENT DETAIL
67	FRAMING PLAN
68	BEAM DATA TABLE
69	SUPERSTRUCTURE PLAN
70	SUPERSTRUCTURE SECTION
71	SUPERSTRUCTURE DETAIL
72-73	FINISH GRADE ELEVATIONS
74	APPROACH SLAB
75	URN DETAILS
76-77	REINFORCING BAR LIST
78	LIGHTING GENERAL NOTES & QUANTITIES
79-80	LIGHTING PLAN
81	LIGTHING PLAN ELECTRIC SERVICE DETAIL
1-10	LANDSCAPE PLANS
A-9 - A-11*	REPORT OF CORE BORINGS
B-2*	ROADWAY SOIL SURVEY
UTV-1*	SUMMARY OF VERIFIED UTILITIES

*These sheets are contained in a separate digitally signed and sealed document.

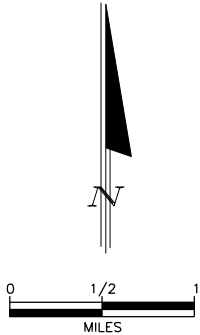
GOVERNING STANDARD PLANS:

Florida Department of Transportation, FY2021-22 Standard Plans for Road and Bridge Construction and applicable Interim Revisions (IRs).

Standard Plans for Road Construction and associated IRs are available at the following website: <http://www.fdot.gov/design/standardplans>

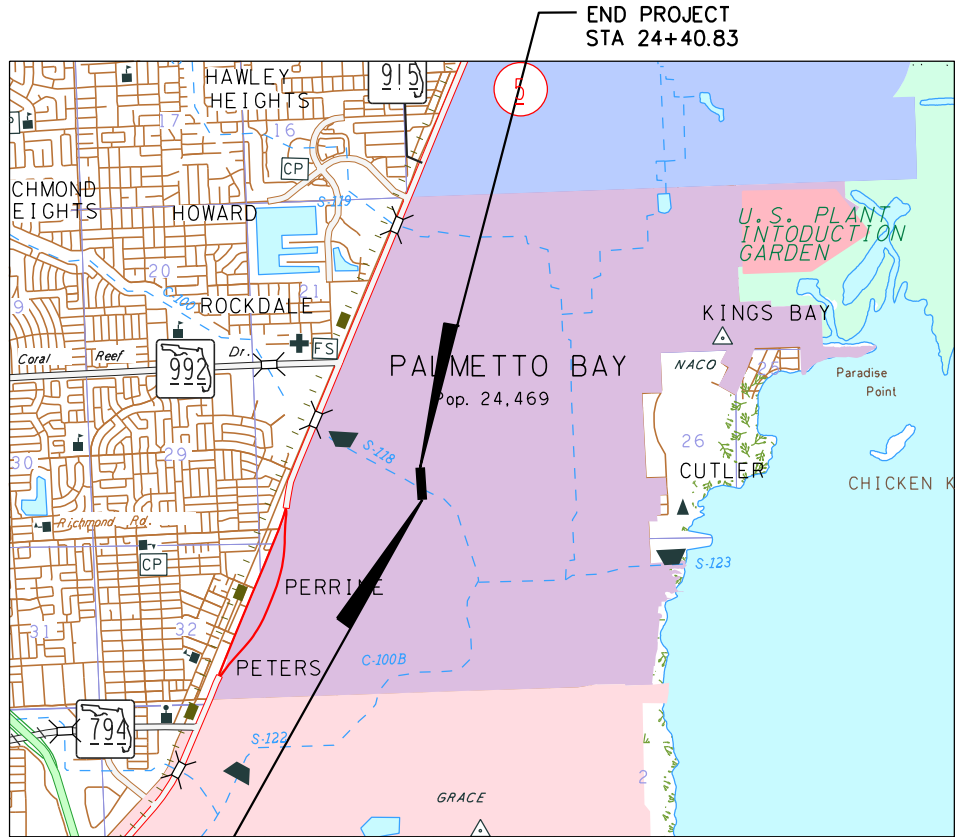
Standard Plans for Bridge Construction are included in the Structures Plans Component.

THESE PLANS HAVE BEEN PREPARED IN ACCORDANCE WITH AND ARE GOVERNED BY THE MIAMI-DADE COUNTY PUBLIC WORKS DEPARTMENT STANDARDS AND SPECIFICATIONS PARTS 1, 2 AND 3. THE MANUAL OF UNIFORM MINIMUM STANDARDS FOR DESIGN, CONSTRUCTION AND MAINTENANCE FOR STREETS AND HIGHWAYS. THE FLORIDA DEPARTMENT OF TRANSPORTATION ROADWAY AND TRAFFIC STANDARD PLANS, AND THE FLORIDA DEPARTMENT OF TRANSPORTATION STANDARD SPECIFICATIONS, AS AMENDED BY CONTRACT DOCUMENTS.



PLANS FOR PROPOSED
IMPROVEMENTS TO
SW 87th AVENUE
OVER THE C-100 CANAL
FROM SW 164 ST TO SW 163 TERR.

MIAMI-DADE COUNTY PROJECT NO. 20210098



BEGIN PROJECT
STA 12+71.88

PREPARED FOR



MIAMI-DADE COUNTY
DEPARTMENT OF TRANSPORTATION AND PUBLIC WORKS
HIGHWAY DIVISION

STEPHEN P. CLARK CENTER
111 NW 1 ST
MIAMI, FLORIDA 33128

BY



R.J. Behar & Company, Inc.
Engineers • Planners

6861 SW 196 AV., SUITE 302
PEMBROKE PINE, FLORIDA 33332
Phone: (954) 680-7771

FINAL PLANS
MAY 2022

NOTE:

ATTENTION IS DIRECTED TO THE FACT THAT THESE PLANS MAY HAVE BEEN REDUCED IN SIZE BY REPRODUCTION. THIS MUST BE CONSIDERED WHEN OBTAINING SCALED DATA.

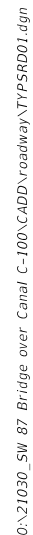
REVISIONS:

ROADWAY SHEETS 4, 5, 9, 11, 19, 24, 42, 43 & 45.
BRIDGE SHEETS 59, 60, 62 & 63 (REVISED 06-23-2022)

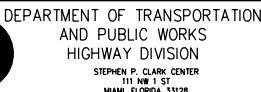
LENGTH OF JOB		
	LIN. FT.	MILES
ROADWAY	1,102.61	0.209
BRIDGE	66.34	0.012
GROSS LENGTH OF JOB	1,168.95	0.221
EXCEPTIONS	N/A	N/A
NET LENGTH OF JOB	1,168.95	0.221

APPROVED _____
COUNTY ENGINEER
RECOMMENDED _____
ASSISTANT DIRECTOR
SUBMITTED _____
HIGHWAY DIVISION

PROPOSED _____	CHECK _____
DESIGN _____	DRAWN _____
DATE _____	SHEET 1 OF 81

6/23/2022

	DESIGNED BY
	CHECKED BY
	SUPERVISED BY



TYPICAL SECTION

Revised Sheets for Addendum no. 2

6/24/2022 11:01:36 AM jcrzgarcia 0:\21030_SW 87 Bridge over Canal C-100\CADD\roadway\SUMORD01.dgn

SUMMARY OF ROADWAY QUANTITIES					
PAY ITEM NO	PAY ITEM DESCRIPTION	UNIT	TOTAL		
			P	F	
101-1-A	MOBILIZATION	LS	1		
102-1A	MAINTENANCE OF TRAFFIC (INCLUDING TEMPORARY REFLECTIVE PAVEMENT MARKERS, MARKINGS,TRAFFIC CONES, TEMPORARY SIGNS, FLAG MEN, ETC.)	LS	1		
104-11	FLOATING TURBIDITY BARRIER	LF	112		
104-13-1	STAKED SILT FENCE (TYPE III)	LF	2706		
104-18	INLET PROTECTION SYSTEM	EA	8		
108-1	PROTECTION OF EXISTING STRUCTURES - INSPECTION & SETTLEMENT MONITORING	LS	1		
110-1-1B	CLEARING AND GRUBBING	LS	1		
110-22A	TREE ROOT AND BRANCH PRUNING	EA	5		
120-1	REGULAR EXCAVATION	CY	473		
120-4	SUBSOIL EXCAVATION	CY	3629		
120-5	CHANNEL EXCAVATION	CY	649	703	⚠
120-6	EMBANKMENT	CY	5416		
160-4	TYPE 'B' STABILIZATION (12") (MIN. C.B.R. OF 30)	SY	4381		
210-1-2	LIMEROCK BASE (8") (PRIMED)	SY	4068		
327-70-01	MILLING, 1" AVERAGE DEPTH	SY	327		
334-1-13	TRAFFIC LEVEL C, SP-12.5 (2")	TN	420	459	⚠
337-7-82	FRICTION COURSE, TRAFFIC LEVEL C, FC-9.5 (1' THICK)	TN	228		
339-1	MISCELLANEOUS ASPHALT PAVEMENT	TN	7		
400-0-11	CONCRETE CLASS NS, GRAVITY WALL	CY	133		
425-1	INLETS, CURB, TYPE 9, <10'	EA	3		
425-1-902B	INLETS, (SPECIAL) (>10')	EA	1		
425-1-475	INLETS, CURB, TYPE 7, PARTIAL	EA	1		
425-1-479	INLETS, CURB, TYPE 7, MODIFY	EA	3		
425-1-521	INLETS, DT BOT, TYPE C,<10'	EA	2		
425-1-541A	INLETS, DT BOT, TYPE D,JBOT, <10'	EA	1		
425-2-041	MANHOLES, P-7, <10'	EA	2		
425-2-041A	MANHOLES, P-7, >10'	EA	4		
425-5	MANHOLE, ADJUST	EA	2		
430-94-1-1	DESILT PIPE (0" TO 48")	LF	351	81	
430-175-118	PIPE CULVERT,OPTIONAL MATERIAL,ROUND, 18"S/CD	LF	81	196	
430-175-124	PIPE CULVERT,OPTIONAL MATERIAL,ROUND, 24"S/CD	LF	319	409	⚠
430-175-148	PIPE CULVERT, OPT MATERIAL, ROUND, 48"S/CD	LF	16		
430-175-218	PIPE CULVERT,OPTIONAL MATERIAL,OTHER-ELIP/ARCH, 18"S/CD	LF	20		
430-524-100	STRAIGHT CONCRETE ENDWALLS, 24", SINGLE, ROUND	EA	1		
460-5-1830	MANATEE GATE - (PIPE DIAMETERS 18" TO 30", OR EQUIVALENT)	EA	1		
460-5-3648	MANATEE GATE - (PIPE DIAMETERS 36" TO 48", OR EQUIVALENT)	EA	1		
443-70-4	FRENCH DRAIN, 24"	LF	498		
527-2	DETECTABLE WARNING ON WALKING SURFACE/CURB RAMP DETECTABLE WARNING SURFACE	SF	235		
520-1-10	CONCRETE CURB AND GUTTER (TYPE "F") INCLUDES COST OF LIMEROCK	LF	1197		
520-70	CONCRETE TRAFFIC SEPARATOR, SPECIAL VARIABLE WIDTH	SY	235		
522-1	CONCRETE SIDEWALK (4" THICK)	SY	718	671	
522-2	CONCRETE SIDEWALK (6" THICK) (INCLUDING PEDESTRIAN RAMP & DRIVEWAYS)	SY	137	184	
530-3-4	RIPRAP, RUBBLE, F&I, DITCH LINING	TN	219	131	
530-4-6	ARTICULATED CONCRETE BLOCK REVETMENT SYSTEM, THICKNESS 6"	SY	325	543	
530-74	BEDDING STONE	TN	3	124	
536-1-1	GUARDRAIL-ROADWAY	LF	371	280	⚠
536-73	GUARDRAIL REMOVAL	LF	139		
550-10-928	FENCING (SPECIAL) (5.1' TO 6' HEIGHT)	LF	180		
550-60-915	SFWMD ACCESS GATE	LS	1		
575-1-1	SODDING (PENSACOLA BAHIA OR MATCH EXISTING) (INCLUDES WATERING AND MAINTENANCE)	SY	1082		

PAY ITEM NOTES

102-1A TO BE ACCOMPLISHED IN ACCORDANCE WITH THE FLORIDA DEPARTMENT OF TRANSPORTATION INDEX 600 SERIES, THE MANUAL OF UNIFORM TRAFFIC CONTROL DEVICES FOR STREETS AND HIGHWAYS, U.S. DEPARTMENT OF TRANSPORTATION FEDERAL HIGHWAY ADMINISTRATION (ANSI D6 1-1978), PUBLIC WORKS MANUAL OF METROPOLITAN DADE COUNTY, AND THE LATEST REVISIONS OF THE AFORE MENTIONED MANUALS. INCLUDES THE COST OF FURNISHING, INSTALLING, MAINTAINING, AND REMOVING ALL ITEMS OF MAINTENANCE OF TRAFFIC NOT PAID FOR UNDER SEPARATE ITEMS INCLUDING BUT NOT LIMITED TO SIGNS, BARRICADES, FLASHING LIGHTS, TEMPORARY PAVEMENT, TEMPORARY PAVEMENT MARKINGS, TRAFFIC SIGNAL MODIFICATION FOR TRAFFIC CONTROL, ETC.

108-1 STRUCTURES TO MONITOR PER FDOT SPECIFICATIONS SECTION 108:

16394 SW 86 CT
16392 SW 86 CT
8640 SW 163 TERR
16298 SW 88 AVE
16365 SW 87 CT

110-1-1B INCLUDES REMOVAL OF EXISTING PAVEMENT, CONCRETE SIDEWALK, DRIVEWAYS, CURB AND GUTTER, DRAINAGE STRUCTURES AND PIPES, MISCELLANEOUS CONCRETE, VEGETATION, TREES AND DEBRIS TO BE DISPOSED OF IN LEGAL AREAS PROVIDED BY THE CONTRACTOR. INCLUDES THE COST OF CLEANING-OUT ALL EXISTING DRAINAGE STRUCTURES WHICH ARE TO REMAIN WITHIN THE LIMITS OF CONSTRUCTION.

425-1 TO 425-2 COST OF BAFFLE, MATERIALS, INLET AND MANHOLE, PAVEMENT AND BASE, LABOR & CONSTRUCTION SHALL BE INCLUDED IN COST OF STRUCTURES.

425-1-541A INCLUDES THE COST OF SKIMMER TYPE I (36" SIZE)

443-70-4 INCLUDES THE COST OF EXCAVATION TO PLAN ELEVATION, PERFORATED PIPE, BALLAST ROCK, PLASTIC FILTER FABRIC AND BACKFILLING WITH SELECT FILL (SEE DETAIL OF EXFILTRATION DRAIN TO DETERMINE NON-PERFORATED PIPE QUANTITY) AND ALL APPLICABLE ITEMS REQUIRED TO CONSTRUCT EXFILTRATION DRAIN.

530-4-6 INCLUDES CONCRETE FOR TOP TERMINATION TRENCH.

536-1-1 INCLUDES COST OF GUARDRAIL BRIDGE CONNECTIONS AND END TREATMENTS

550-60-915 SPECIAL TYPE GATE, 16 FEET OPENING.

575-1-1 INCLUDES SOD TO BE USED IN THE RESTORATION OF LAWNS AND MAY BE INCREASED OR DECREASED AS DIRECTED BY THE ENGINEER. PENSACOLA OR TO MATCH EXISTING SOD.

- ALLOWABLE PIPE OPTIONS ARE:
1. STEEL REINFORCED CONCRETE PIPE.
 2. ALUMINUM SPIRAL RIB 12 GA.
 3. ALUMINIZED STEEL SPIRAL RIB 12 GA.
 4. HIGH DENSITY POLYETHYLENE, CL II

FOR SIGNING AND MARKING QUANTITIES SEE SHEET 51
FOR BRIDGE QUANTITIES SEE SHEET 59
FOR LIGHTING QUANTITIES SEE SHEET 78
FOR LANDSCAPE QUANTITIES SEE SHEET 5 (LANDSCAPE).

REVISIONS

DATE	BY	DESCRIPTION	DATE	BY	DESCRIPTION
6/13/22	JC	QUANTITY REVISED, AND ADDED/REVISED PAY ITEMS AND NOTES			



R.J. Behar & Company, Inc.
Engineers • Planners
6861 SW 196 Avenue, Suite 302
Pembroke Pines, Florida 33332

DESIGNED BY	NAME	DATE	DRAWN BY	NAME	DATE
CHECKED BY			CHECKED BY		
SUPERVISED BY:					



DEPARTMENT OF TRANSPORTATION AND PUBLIC WORKS
HIGHWAY DIVISION
STEPHEN P. CLARK CENTER
111 NW 1 ST
MIAMI, FLORIDA 33128

SUMMARY OF QUANTITIES AND PAY ITEM NOTES

0:\21030_SW 87 Bridge over Canal C-100\CADD\roadway\gmtrrd01.dgn
Jcruzgarcia
9:02:40 AM
6/24/2022

GENERAL NOTES

1.

B.M. DATA IS NATIONAL GEODETIC VERTICAL DATUM OF 1929 (N.G.V.D.--29).

2.

ANY N.G.V.D. BENCH MARK MONUMENTS WITHIN THE LIMITS OF CONSTRUCTION IS TO BE PROTECTED AND PROPERLY REFERENCED BY A REGISTERED--LAND SURVEYOR IN ACCORDANCE WITH THE MINIMUM TECHNICAL STANDARDS OF THE FLORIDA BOARD OF PROFESSIONAL LAND SURVEYORS PRIOR TO BEGINNING WORK AT THE SITE. IF ANY MONUMENT IS IN DANGER OF DAMAGE, THE PROJECT ENGINEER SHALL NOTIFY RON TAYLOR, FLORIDA DEPT. OF ENVIRONMENTAL PROTECTION (FDEP) SURVEYING AND MAPPING, 3900 COMMONWEALTH BLVD., MAIL STATION 105, TALLAHASSEE, FLORIDA 32399--3000 TELEPHONE (850) 245--2606.

3.

ALL PUBLIC LAND CORNERS AND MONUMENTS WITHIN THE LIMITS OF CONSTRUCTION ARE TO BE PROTECTED BY THE CONTRACTOR AS FOLLOWS: CORNERS AND MONUMENTS IN CONFLICT WITH THE WORK AND IN DANGER OF BEING DAMAGED, DESTROYED, OR COVERED SHALL BE PROPERLY REFERENCED BY A REGISTERED--LAND SURVEYOR IN ACCORDANCE WITH THE MINIMUM TECHNICAL STANDARDS OF THE FLORIDA BOARD OF PROFESSIONAL LAND SURVEYORS PRIOR TO BEGINNING WORK AT THE SITE. THE CONTRACTOR SHALL RETAIN THE LAND SURVEYOR TO REFERENCE, AND RESTORE UPON COMPLETION OF THE WORK, ALL SUCH CORNERS AND MONUMENTS AND SHALL FURNISH TO MIAMI--DADE COUNTY PUBLIC WORKS DEPARTMENT A SIGNED AND SEALED COPY OF THE LAND SURVEYOR'S REFERENCE DRAWING.

4.

ALL STATIONS AND OFFSETS REFER TO CENTERLINE OF CONSTRUCTION, UNLESS OTHERWISE STATED.

5.

ALL GRADES SHOWN IN PLAN ARE FINISHED GRADES.

6.

THE CONTRACTOR SHALL PAINT ALL STATIONS WITH STENCILED NUMBERS ON THE FACE OF CURB:

A. FROM THE BEGINNING OF THE PROJECT WHERE THE CURB IS TO REMAIN.
B. AT NEW CURB NOT LATER THAN 72 HOURS AFTER BEING POURED.
C. WHERE CURB DOES NOT EXIST AND SHALL NOT BE CONSTRUCTED,

THE CONTRACTOR SHALL MAINTAIN STATIONING WITH SURVEYING STAKES. CONTRACTOR SHALL MAINTAIN THE STATION MARKS VISIBLE UNTIL FINAL INSPECTION.

7.

ALL CONSTRUCTION SHALL BE IN STRICT ACCORDANCE WITH THE REQUIREMENTS OF THE MIAMI--DADE COUNTY PUBLIC WORKS DEPARTMENT, AND ANY OTHER STATE OR LOCAL AGENCY WITH JURISDICTION. IT IS THE INTENT OF THESE PLANS TO BE IN ACCORDANCE WITH APPLICABLE CODES AND AUTHORITIES HAVING JURISDICTION. ANY DISCREPANCIES BETWEEN THESE PLANS AND APPLICABLE CODES SHALL BE IMMEDIATELY BROUGHT TO THE ATTENTION OF THE ENGINEER.

8.

CONTRACTOR SHALL COMPLY WITH THE REQUIREMENTS OF THE EPA AND THE NATIONAL POLLUTION DISCHARGE ELIMINATION SYSTEM (NPDES).

9.

THE LOCATION AND SIZE OF THE UTILITIES SHOWN IN THE PLANS ARE BASED ON THE BEST AVAILABLE INFORMATION AND SHOULD BE CONSIDERED APPROXIMATE ONLY. ADDITIONAL UTILITIES MAY EXIST WHICH ARE NOT SHOWN ON THESE DRAWINGS. THE CONTRACTOR SHALL VERIFY ALL UTILITIES BY ELECTRONIC METHODS AND BY PRE--TRENCHING IN COORDINATION WITH ALL UTILITY COMPANIES, PRIOR TO BEGINNING ANY CONSTRUCTION OPERATION. ANY AND ALL CONFLICTS OF EXISTING UTILITIES WITH PROPOSED IMPROVEMENTS MUST BE RESOLVED BY THE ENGINEER AND THE OWNER. THIS WORK BY THE CONTRACTOR SHALL BE CONSIDERED INCIDENTAL TO THE CONTRACT AND NO ADDITIONAL COMPENSATION SHALL BE ALLOWED.

10.

PLEASE CALL MR. MIKE WHITLING AT 305--375--2655 CONCERNING SURVEY RELATED QUESTIONS.

11.

EXISTING TOPOGRAPHIC INFORMATION WAS OBTAINED FROM SURVEY PREPARED BY MIAMI--DADE COUNTY DEPARTMENT OF TRANSPORTATION & PUBLIC WORKS

12.

CONTRACTOR SHALL CONTACT SUNSHINE STATE ONE--CALL AT 1--(800)--432-4770 AT LEAST 48 HOURS PRIOR TO PERFORMING ANY DIGGING TO VERIFY THE EXACT LOCATION OF EXISTING UTILITIES. A CONTRACTOR'S REPRESENTATIVE MUST BE PRESENT WHEN UTILITY COMPANIES LOCATE THEIR FACILITIES.

13.

THE CONTRACTOR IS TO USE CAUTION WHEN WORKING IN OR AROUND AREAS OF OVERHEAD AND UNDERGROUND UTILITIES.

14.

MIAMI--DADE WATER AND SEWER DEPARTMENT REQUIRES THAT ACCESS TO ALL WATER AND SEWER VALVES, SANITARY MANHOLES, AND OTHER CONTROL MECHANISMS BE MAINTAINED THROUGHOUT CONSTRUCTION IN THE EVENT OF AN EMERGENCY TO ENSURE THE PUBLIC HEALTH AND SAFETY. COVERING VALVE BOXES AND MANHOLES CAN BE CONSIDERED UNAUTHORIZED OBSTRUCTION OF AND TAMPERING WITH DEPARTMENT UTILITIES. ALL REQUESTS FOR UTILITY ADJUSTMENTS MUST BE MADE IN WRITING AT LEAST TWO (2) WEEKS IN ADVANCE. FOR MANHOLE AND VALVES, CONTACT THE CONSTRUCTION MANAGEMENT SECTION, PUMP STATIONS UNIT, 3071 SW 38 AVENUE, FAX NO. 305--668--3626. THE DEPARTMENT WILL MAKE ONE FINAL AND PERMANENT ADJUSTMENT AT NO COST TO THE REQUESTING AGENCY. FOR THE ADJUSTMENT OF WATER METERS, CONTACT THE CHIEF OF METER OPERATIONS AND MAINTENANCE, FAX NO. 305--545--3482. FOR ANY FIRE HYDRANTS THAT ARE DAMAGED OR BUMPED DURING CONSTRUCTION, CONTACT THE MDWASD HYDRANT SHOP AT 305--805--4575 BEFORE POURING CONCRETE FOR THE SIDEWALK. IN THE EVENT OF A WATER OR SEWER EMERGENCY, CONTACT MIAMI DADE WATER AND SEWER DEPARTMENT AT 305--274--9272. THIS LINE IS OPEN 24 HOURS, 7 DAYS A WEEK.

15.

KNOWN UTILITY COMPANIES IN THE PROJECT LIMITS INCLUDE, BUT ARE NOT LIMITED TO:

ATLANTIC BROADBAND(305) 861 -- 8069
AT&T (305) 913 -- 1408
CENTURY LINK (720) 888 -- 1089
COMCAST CABLE (954) 444 -- 5113
CROWN CASTLE (786) 246 -- 7827
ENERGY TRANSFER (407) 838 -- 7171
FPL (305) 442 -- 5172
HT LOCATING (786) 345 -- 0991
MASTEC (305) 431 -- 6014
NEXT ERA ENERGY (305) 835 -- 3618
PRG CONSULTING (816) 886 -- 8574

RED FLEX CAMERAS (915) 727 -- 1990
SUN GUIDE
VERIZON/MCI
MIAMI--DADE WATER & SEWER (786) 268 -- 5320

16.

THE CONTRACTOR IS ADVISED THAT PROPERTIES ADJACENT TO THE PROJECT HAVE ELECTRIC, TELEPHONE, GAS, WATER, AND/OR SEWER SERVICE LATERALS WHICH MAY NOT BE SHOWN IN PLANS. THE CONTRACTOR MUST REQUEST THE LOCATION OF THESE LATERAL SERVICES FROM THE UTILITY COMPANIES. THE ADDITIONAL COST OF EXCAVATING, INSTALLING, BACKFILLING, AND COMPACTING AROUND THESE LATERAL SERVICES MUST BE INCLUDED IN THE BID RELATED ITEM FOR THE WORK BEING DONE.

17.

ANY DAMAGE TO PUBLIC OR PRIVATE PROPERTY SHALL BE RESTORED BY THE CONTRACTOR AT NO ADDITIONAL COST TO THE OWNER.

18.

ANY ENCROACHMENT WITHIN THE LIMITS OF CONSTRUCTION SHALL BE RELOCATED OR PROTECTED BY THE ADJACENT PROPERTY OWNER AT THEIR EXPENSE.

19.

CLEARING AND GRUBBING, GRADING AND OTHER INCIDENTAL WORK NECESSARY FOR HARMONIZATION OUTSIDE R/W SHALL BE INCLUDED IN RELATED BID ITEMS.

20.

ALL GRASS AREAS AFFECTED BY CONSTRUCTION SHALL BE RE--SODDED.

21.

THE CONTRACTOR SHOULD TAKE SPECIAL NOTE OF SOIL CONDITIONS THROUGHOUT THIS PROJECT. ANY SPECIAL SHORING, SHEETING OR OTHER PROCEDURES NECESSARY TO PROTECT ADJACENT PROPERTY, PUBLIC OR PRIVATE, DURING THE EXCAVATION OF SUBSOIL MATERIAL AND EXFILTRATION TRENCH, OR FILLING OF ANY AREA, OR FOR ANY OPERATION DURING CONSTRUCTION, SHALL BE THE SOLE RESPONSIBILITY OF THE CONTRACTOR.

22.

IF SHEETING, SHORING, OR DEWATERING, INCLUDING WELL POINTS ARE NECESSARY, THE CONTRACTOR MUST MONITOR AND CONTROL ALL WORK THAT MAY CAUSE CRACKING TO ANY ADJACENT BUILDING, STRUCTURE, OR PROPERTY AREA. THE CONTRACTOR SHALL BE RESPONSIBLE FOR ANY DAMAGES CAUSED BY THESE OPERATIONS. COST OF SHEETING, SHORING, OR DEWATERING SHALL BE INCLUDED IN THE RELATED BID ITEM FOR THE WORK BEING DONE.

23.

THE CONTRACTOR SHALL BE RESPONSIBLE FOR OBTAINING THE DEWATERING PERMIT. COST OF THE PERMIT AND DEWATERING SHALL BE INCLUDED IN THE RELATED BID ITEM FOR THE WORK BEING DONE.

24.

THE CONTRACTOR WILL RESTRICT PERSONNEL, THE USE OF EQUIPMENT, AND THE STORAGE OF MATERIALS TO AREAS WITHIN THE LIMITS OF CONSTRUCTION AND DESIGNATED STAGING AREA.

25.

EXPLORATORY OR PRE--TRENCHING IN THE ALIGNMENT AND GRADE OF PROPOSED PIPES STRUCTURES, FRENCH DRAINS, CONDUITS, POLE FOUNDATIONS AND/OR SUB--GRADE SHALL BE PERFORMED SEVEN DAYS IN ADVANCE OF ITS CONSTRUCTION AS DIRECTED BY THE ENGINEER. THE CONTRACTOR SHALL PROVIDE UNDERGROUND UTILITY OWNERS AND THE DEPARTMENT WITH IMMEDIATE NOTIFICATION OF ANY CONFLICT WITH PROPOSED CONSTRUCTION. THIS NOTIFICATION SHALL PROVIDE SURVEY INFORMATION ABOUT EXISTING UTILITY ALIGNMENT, GRADE AND POSSIBLE CONFLICTS. PAYMENT FOR EXPLORATORY OR PRE--TRENCHING, SURVEY AND BACKFILLING SHALL BE INCLUDED IN THE COST OF THE RELATED BID ITEM FOR THE WORK BEING DONE.

26.

ALL DITCH EXCAVATIONS SHALL BE PERFORMED IN FULL COMPLIANCE WITH THE PROVISIONS OF THE TRENCH SAFETY ACT.

27.

ALL EXCESS MATERIAL, AS DESIGNATED BY THE ENGINEER, IS TO BE DISPOSED BY THE CONTRACTOR IN AREAS PROVIDED BY HIM WITHIN 72 HOURS OF BEING DEPOSITED IN THE CONSTRUCTION AREA AND AT THE CONTRACTOR'S EXPENSE.

28.

ALL DISPOSAL OF MATERIALS, RUBBISH, AND DEBRIS SHALL BE MADE AT A LEGAL DISPOSAL SITE OR BY OTHER PRIOR APPROVED MANNER. MATERIAL CLEARED FROM THE SITE AND DEPOSITED ON ADJACENT OR NEARBY PROPERTY WILL NOT BE CONSIDERED AS HAVING BEEN DISPOSED OF SATISFACTORILY.

29.

ANY KNOWN OR SUSPECTED HAZARDOUS MATERIAL FOUND ON THE PROJECT BY THE CONTRACTOR SHALL BE IMMEDIATELY REPORTED TO THE PROJECT ENGINEER, WHO SHALL DIRECT THE CONTRACTOR TO PROTECT THE AREA OF KNOWN OR SUSPECTED CONTAMINATION FROM FURTHER ACCESS. THE ENGINEER WILL ARRANGE FOR INVESTIGATION, IDENTIFICATION, AND REMEDIATION OF THE HAZARDOUS MATERIAL. THE CONTRACTOR SHALL NOT RETURN TO THE AREA OF CONTAMINATION UNTIL APPROVAL IS PROVIDED BY THE PROJECT ENGINEER.

30.

EXISTING ABOVE GROUND FEATURES ARE SHOWN ACCORDING TO THE BEST AVAILABLE DATA AND MAY NOT ACCURATELY REFLECT PRESENT CONDITIONS. CONTRACTOR SHALL BE RESPONSIBLE FOR FAMILIARIZING HIMSELF WITH CURRENT SITE CONDITIONS, AND SHALL REPORT DISCREPANCIES TO THE ENGINEER PRIOR TO STARTING WORK.

31.

CONTRACTOR IS TO VERIFY THE EXACT LOCATION OF ALL EXISTING TREES, STRUCTURES AND UTILITIES, WHICH MAY NOT BE SHOWN ON PLANS. ANY STRUCTURE, PAVEMENT, TREES OR OTHER EXISTING IMPROVEMENT NOT SPECIFIED FOR REMOVAL WHICH IS TEMPORARY DAMAGED, EXPOSED OR IN ANY WAY DISTURBED BY CONSTRUCTION PERFORMED UNDER THIS CONTRACT, SHALL BE REPAIRED, PATCHED OR REPLACED AT NO ADDITIONAL COST TO THE OWNER.

32.

CONTRACTOR SHALL AVOID DAMAGE TO ANY EXISTING TREES TO REMAIN. EXISTING TREES SHALL BE REMOVED ONLY IF REQUIRED FOR CONSTRUCTION. THOSE TREES NOT INTERFERING WITH CONSTRUCTION SHALL BE PROTECTED IN PLACE.

33.

THE CONTRACTOR SHALL USE A STREET SWEEPER (USING WATER) OR OTHER EQUIPMENT CAPABLE OF CONTROLLING AND REMOVING DUST. APPROVAL OF THE USE OF SUCH EQUIPMENT IS CONTINGENT UPON ITS DEMONSTRATED ABILITY TO DO THE WORK.

34.

THE CONTRACTOR SHALL PREPARE AND SUBMIT SHOP DRAWINGS FOR ALL ITEMS USED IN THIS PROJECT.

35.

WHEN DISSIMILAR MATERIAL CONNECTIONS ARE MADE, SUCH AS CONCRETE TO METAL, THE DISSIMILAR MATERIAL SHALL BE SEPARATED BY COATING THE CONTACT SURFACE WITH BITUMASTIC MATERIAL.

36.

THE CONTRACTOR IS RESPONSIBLE FOR KEEPING EXISTING AND NEW INLETS CLEAN OF MILLING MATERIAL, LIMEROCK, DEBRIS, ETC. DURING THE CONSTRUCTION AT NO ADDITIONAL COST TO THE OWNER. ALL LINES AND STRUCTURES SHALL BE CLEANED PRIOR TO FINAL INSPECTION AND ACCEPTANCE.

37.

CAST IRON PRODUCTS: HEAVY--DUTY CLASSIFICATION SUITABLE FOR HIGHWAY TRAFFIC LOADS OR 16,000 LBS WHEEL LOADS.

38.

STEEL GRATING AND COVERS: TRAFFIC CLASSIFICATION H--20; 16,000 LBS OVER 8"x20" AREA.

39.

EXISTING DRAINAGE STRUCTURES WITHIN THE LIMITS OF CONSTRUCTION SHALL REMAIN UNLESS OTHERWISE NOTED.

40.

EXISTING MANHOLES AND INLETS SCHEDULED TO REMAIN SHALL BE THOROUGHLY CLEANED BY REMOVING ALL DEBRIS AND SEDIMENTS, AND THE INTERIOR SHALL BE SEALED WITH AN APPROVED NON--TOXIC BITUMASTIC SEALANT.

41.

PRIOR TO CONSTRUCTION THE CONTRACTOR WILL INSPECT ALL EXISTING STRUCTURES WHICH ARE TO REMAIN AND NOTIFY THE ENGINEER OF ANY OBVIOUS STRUCTURAL DEFICIENCIES.

42.

CONTRACTOR SHALL ADJUST ALL EXISTING CATCH BASINS, GRATES, AND STORM MANHOLE COVERS TO MEET NEW GRADES WHERE APPLICABLE.

43.

ELEVATIONS AND OFFSETS SHOWN AT DRAINAGE STRUCTURES REFER TO EDGE OF PAVEMENT UNLESS OTHERWISE NOTED.

44.

RADII ON CURB RETURNS ARE TO THE EDGE OF PAVEMENT UNLESS OTHERWISE NOTED.

45.

PRIOR TO CONSTRUCTION THE CONTRACTOR WILL VERIFY INVERT ELEVATIONS OF ALL PIPES WHICH ARE TO REMAIN AND NOTIFY THE ENGINEER OF ANY ELEVATION DEVIATIONS.

46.

THERE SHALL BE NO MORE THAN THREE LATERAL DRAINAGE INSTALLATIONS WITHOUT BACKFILLING. BACKFILLING OF LATERAL DRAINAGE SHALL NOT LAG MORE THAN 72 HOURS BEHIND THE START OF EXCAVATION.

47.

SPECIAL ATTENTION IS DIRECTED TO THE FACT THAT PORTIONS OF SOME DRAINAGE STRUCTURES EXTEND INTO THE STABILIZED PORTION OF THE ROADBED AND EXTREME CAUTION SHOULD BE USED IN THE STABILIZING OPERATIONS AT THESE LOCATIONS.

48.

THE CONTRACTOR SHALL BE RESPONSIBLE FOR THE PROVISION, INSTALLATION, AND MAINTENANCE OF ALL TRAFFIC CONTROL AND SAFETY DEVICES, IN ACCORDANCE WITH SPECIFICATIONS OUTLINED IN THE PUBLIC WORKS DEPARTMENT MANUAL, THE MANUAL OF UNIFORM TRAFFIC CONTROL DEVICES, AND THE FDOT STANDARD PLANS.

49.

WHERE NEW PAVEMENT MEETS EXISTING, CONNECTION SHALL BE MADE IN A NEAT STRAIGHT LINE AND FLUSH WITH THE EXISTING PAVEMENT.

50.

THE LOCATION OF SOME DRIVEWAYS IS APPROXIMATE. VERIFICATION OF EXACT LOCATION AND DIMENSIONS IS RECOMMENDED.

51.

EXISTING DRIVEWAYS WITHIN THE LIMITS OF THIS PROJECT ARE TO BE REPLACED AT THE SAME LOCATION AND WIDTH, UNLESS OTHERWISE SHOWN IN PLANS.

52.

WHERE CONNECTIONS TO EXISTING SIDEWALKS AND DRIVEWAYS ARE NOT INDICATED ON PLANS, PROPER CONNECTIONS ARE TO BE MADE AS DIRECTED BY THE ENGINEER. DROP CURB AND DRIVEWAY CONNECTIONS SHALL BE PROVIDED FOR ACCESS TO ALL PRIVATE PROPERTIES ADJACENT TO THE PROJECT. PAYMENT SHALL BE INCLUDED IN THE COST OF RELATED BID ITEMS.

53.

CONTRACTOR TO INSTALL 1/2" PREFORMED EXPANSION JOINT WHEN PROPOSED SIDEWALK IMPROVEMENTS IS IMMEDIATELY ADJACENT TO EXISTING CONCRETE SLAB AND/OR BUILDING.

54.

THE SIDEWALK AT DRIVEWAY TURNOUTS SHALL BE 6" CONCRETE.

55.

COMPLETE AS--BUILT INFORMATION RELATIVE TO LOCATION AND DEPTH OF PIPES, MANHOLES, ETC. SHALL BE ACCURATELY RECORDED BY THE CONTRACTOR AND SUBMITTED TO THE ENGINEER PRIOR TO FINAL ACCEPTANCE OF THE WORK. ALL ELEVATIONS SHALL BE TAKEN BY A FLORIDA REGISTERED SURVEYOR AND SHOWN ON THE RECORD DRAWINGS.

56.

DESIGN WATER TABLE ELEVATION: 3.00 FT

57.

MIAMI--DADE COUNTY FLOOD CRITERIA ELEVATION: 7.00 FT

58.

THE INFORMATION PROVIDED IN THESE DRAWINGS IS SOLELY TO ASSIST THE CONTRACTOR IN ASSESSING THE NATURE AND EXTENT OF CONDITIONS WHICH WILL BE ENCOUNTERED DURING THE COURSE OF WORK. THE CONTRACTORS ARE DIRECTED, PRIOR TO BIDDING, TO CONDUCT WHATEVER INVESTIGATIONS THEY DEEM NECESSARY TO ARRIVE AT THEIR OWN CONCLUSION REGARDING THE ACTUAL CONDITIONS THAT WILL BE ENCOUNTERED, AND UPON WHICH BIDS WILL BE BASED.

59.

THE APPLICABLE PROCEDURES FOR WASTE HANDLING SPECIFIED IN THE DERM APPROVED WASTE RELOCATION PLAN AND HAZARDOUS WASTE CONTINGENCY PLAN DATED APRIL 29, 2013 AND REVISED AUGUST 1, 2013 SHALL APPLY.

60.

CONTRACTOR SHALL DISPOSE ANY SOLID WASTE ENCOUNTERED WITHIN THE PROJECT LIMITS TO A CLASS I SOLID WASTE SITE.

61.

CONTRACTOR SHALL REPLACE ANY EXISTING GEOTEXTILE BETWEEN THE SUBGRADE AND THE LIMEROCK THAT IS DAMAGED DURING CONSTRUCTION. CONTRACTOR TO VERIFY EXACT LOCATIONS DURING CONSTRUCTION.

62.

WORK TO BE CONDUCTED IN ACCORDANCE WITH THE REQUIREMENTS OF THE OCCUPATIONAL SAFETY AND HEALTH ADMINISTRATION (OSHA).

63.

CONTRACTOR TO PROVIDE A HEALTH AND SAFETY PLAN (HASP) SIGNED BY A CERTIFIED INDUSTRIAL HYGIENIST.

64.

CONTRACTOR TO PROVIDE AN APPROVED SOIL MANAGEMENT PLAN, INCLUSIVE OF DUST CONTROL (IF SOIL CONTAMINATION REMAINS).

65.

OUTFALLS TO BE CLEANED AND DESILTED.

66.

ALL SALVAGEABLE MATERIALS THAT ARE TO BE REMOVED MUST BE DELIVERED AND UNLOADED AT MIAMI DADE ROAD, BRIDGE, AND CANAL MAINTENANCE DIVISION.

9301 NW 58TH STREET
MIAMI, FL 33178
TELEPHONE NUMBER: 305--592--3116


67.

REFER TO MIAMI DADE COUNTY PUBLIC WORKS MANUAL STANDARD G 2.1 FOR UTILITY PLACEMENT WITHIN PUBLIC RIGHT OF WAY.

68.

IN PREPARATION FOR A STORM (REFER TO GENERAL REQUIREMENTS SECTION 1.05), CONTRACTOR SHALL REMOVE AND DISPOSE ANY TURBID WATER BEING RETAINED BY TURBIDITY BARRIERS AND REMOVE THE TURBIDITY BARRIERS, AS DIRECTED BY THE SOUTH FLORIDA WATER MANAGEMENT DISTRICT.

REVISIONS

DATE	BY	DESCRIPTION	DATE	BY	DESCRIPTION	DATE	BY	DESCRIPTION
6/13/22	JC	 INCLUDE COSTS IN MOBILIZATION ITEM						



R.J. Behar & Company, Inc.


Engineers • Planners

6861 SW 196 Avenue, Suite 302
Pembroke Pines, Florida 33332

DESIGNED BY	NAME	DATE	DRAWN BY	NAME	DATE
CHECKED BY			CHECKED BY		
SUPERVISED BY:					

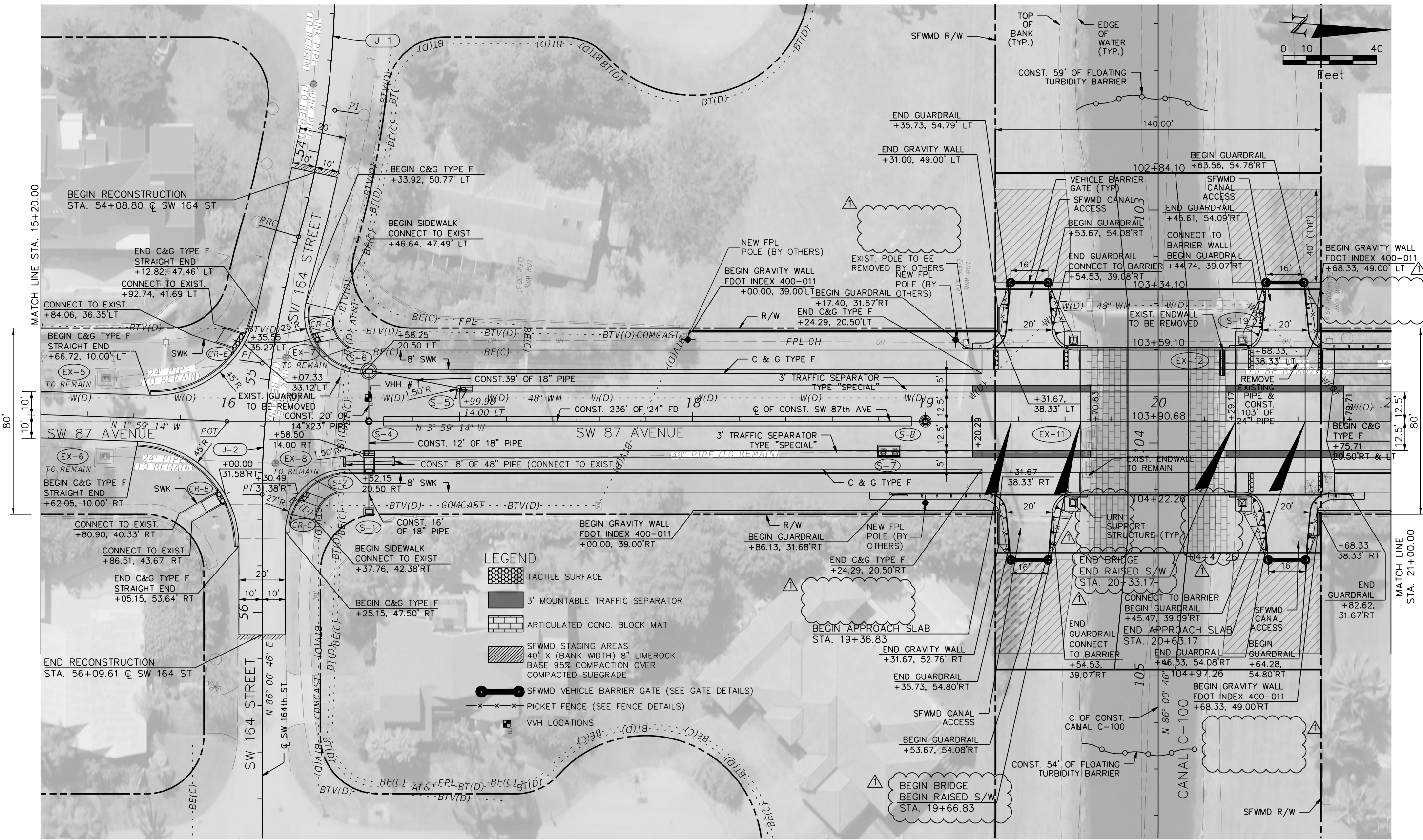
DEPARTMENT OF TRANSPORTATION AND PUBLIC WORKS
HIGHWAY DIVISION
STEPHEN P. CLARK CENTER
111 NW 1 ST
MIAMI, FLORIDA 33128

MIAMI--DADE COUNTY



GENERAL NOTES

0:\21030_SW 87 Bridge over Canal C-100\CADD\roadway\PLANRD05.dgn 6/24/2022 9:12:19 AM jcrzgarcia



REVISIONS					
DATE	BY	DESCRIPTION	DATE	BY	DESCRIPTION
6/23/22	JC	REMOVED & ADDED LABELS ADDED			

R.J. Behar & Company, Inc.
Engineers • Planners
6861 SW 196 Avenue, Suite 302
Pembroke Pines, Florida 33532

DESIGNED BY	CHECKED BY	NAME	DATE	DRAWN BY	CHECKED BY	NAME	DATE

DEPARTMENT OF TRANSPORTATION
AND PUBLIC WORKS
HIGHWAY DIVISION
STEPHEN P. CLARK CENTER
111 NW 1 ST
MIAMI, FLORIDA 33128

0:\21030_SW 87 Bridge over Canal C-100\CADD\drainage\DRXSRD01.dgn
Jcruzgarcia
11:08:11 AM
6/24/2022

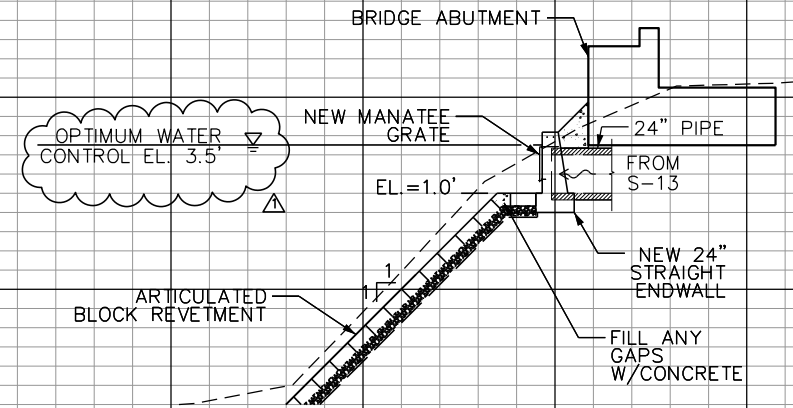
16
14
12
10
8
6
4
2
0

20
18
16
14
12
10
8
6
4
2
0
-2
-4

14
12
10
8
6
4
2
0
-2
-4

S-19

20+28.72



S-19

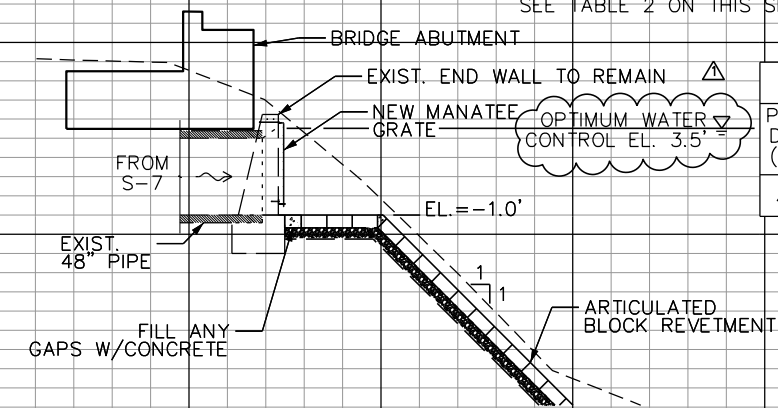
STA. 20+28.72, 25.01' LT
CONST. STRAIGHT CONC. ENDWALL
W/ MANATEE GRATE
INDEX 425-001, 430-001, 430-030
INV. EL. 1.00

EX-11

STA. 19+70.49, 13.71 RT
EXIST. ENDWALL
CONST. MANATEE GRATE
INDEX 430-001
SEE TABLE 2 ON THIS SHEET

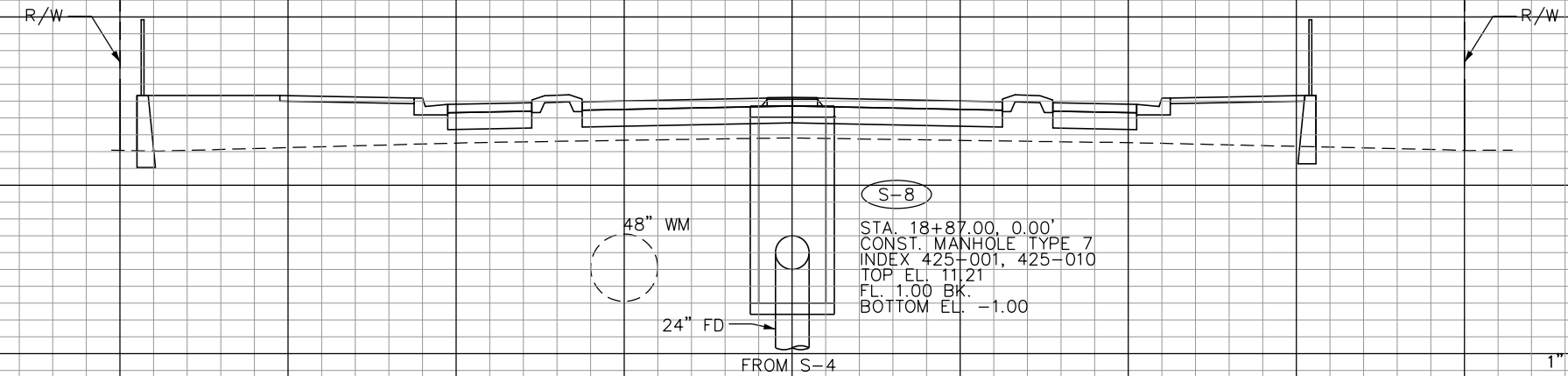
EX-11

19+70.49



MANATEE GRATE
WORK WITH INDEX 430-001

TABLE 2 - SINGLE GUARD								
PIPE DIA. (IN)	TOP STEEL BRACKET	BOTTOM STEEL PLATE	NUMBER OF HOLES	NUMBER OF VERT. BARS	VERTICAL BARS SIZE	NUMBER OF HORIZ. BARS	HORIZONTAL BARS SIZE	WEIGHT LBS.
48	4'-10"	6'-0"	8	8	5/8"	5	5/8"	111



S-8

STA. 18+87.00, 0.00'
CONST. MANHOLE TYPE 7
INDEX 425-001, 425-010
TOP EL. 11.21
FL. 1.00 BK.
BOTTOM EL. -1.00

S-8

19+00.00

1" = 10' Horizontal
1" = 10' Vertical

REVISIONS			REVISIONS		
DATE	BY	DESCRIPTION	DATE	BY	DESCRIPTION
6/23/2022	JC	ADDED OPCE INFORMATION			

R.J. Behar & Company, Inc.
Engineers • Planners
6861 SW 196 Avenue, Suite 302
Pembroke Pines, Florida 33332

DESIGNED BY	NAME	DATE	DRAWN BY	NAME	DATE
CHECKED BY			CHECKED BY		
SUPERVISED BY					

MIAMI-DADE COUNTY
DEPARTMENT OF TRANSPORTATION AND PUBLIC WORKS
HIGHWAY DIVISION
STEPHEN P. CLARK CENTER
111 NW 1 ST
MIAMI, FLORIDA 33128

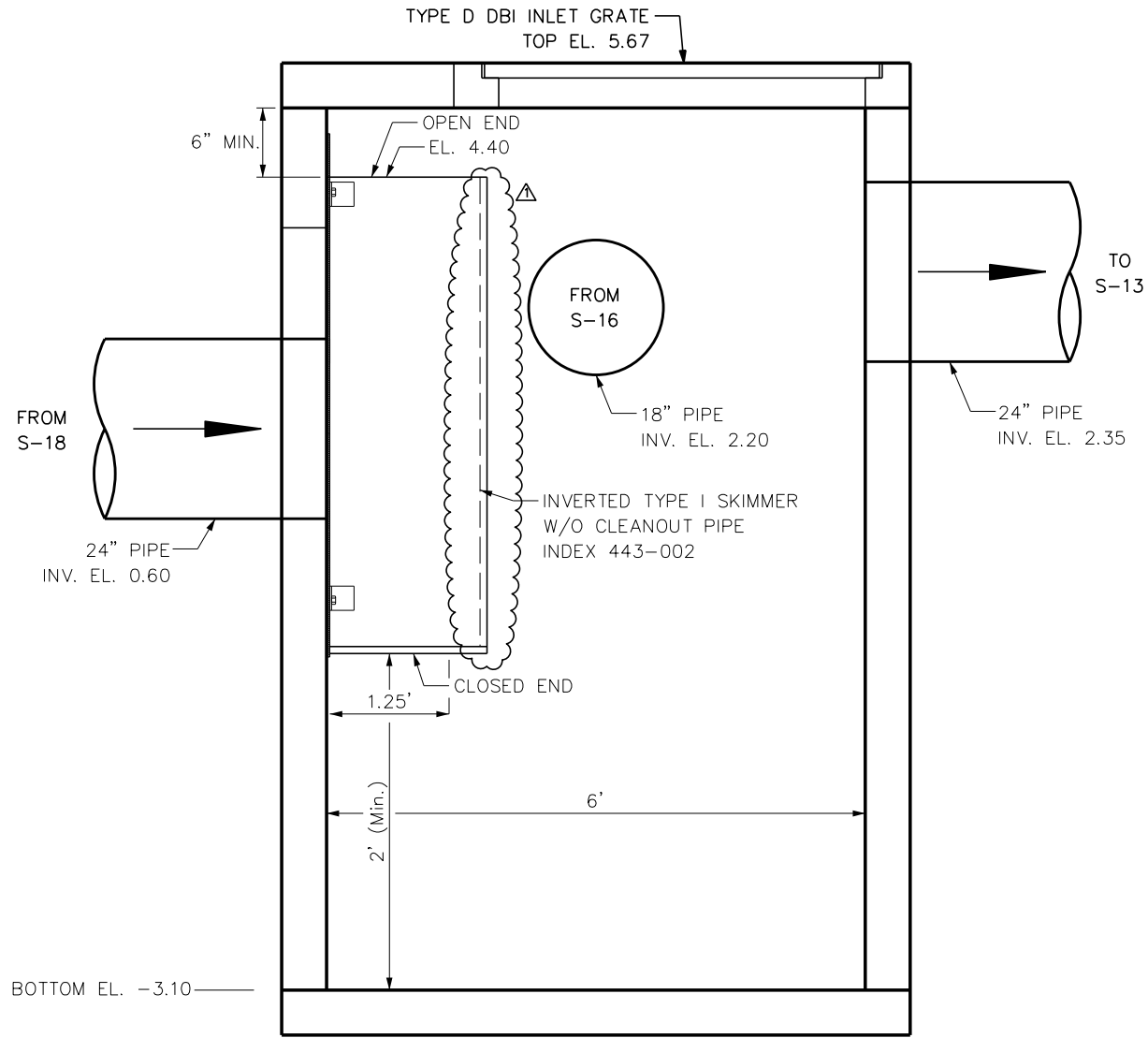
DRAINAGE STRUCTURE SHEETS

0:\21030_SW 87 Bridge over Canal C-100\CADD\drainage\DRDTRD01.dgn

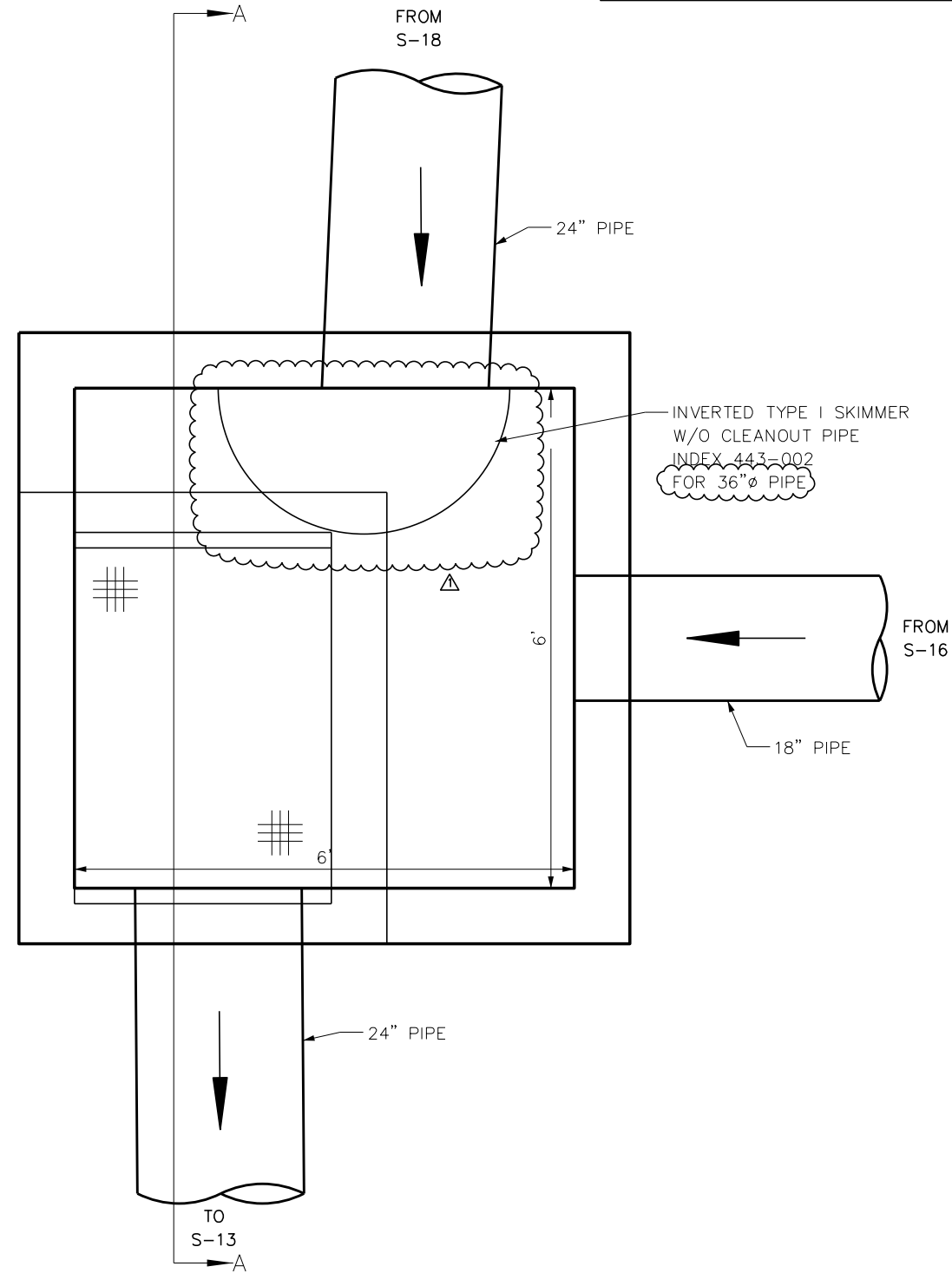
Jcruzgarcia

9:44:08 AM

6/24/2022



S-15 SECTION A-A'
N.T.S.



S-15 PLAN VIEW
N.T.S.

R E V I S I O N S								
DATE	BY	DESCRIPTION	DATE	BY	DESCRIPTION	DATE	BY	DESCRIPTION
6/23/2022	JC	REVISED SIZE OF WEIR						



R.J. Behar & Company, Inc.
Engineers • Planners
6861 SW 196 Avenue, Suite 302
Pembroke Pines, Florida 33332

DESIGNED BY	NAME	DATE	DRAWN BY	NAME	DATE
CHECKED BY			CHECKED BY		
SUPERVISED BY:					

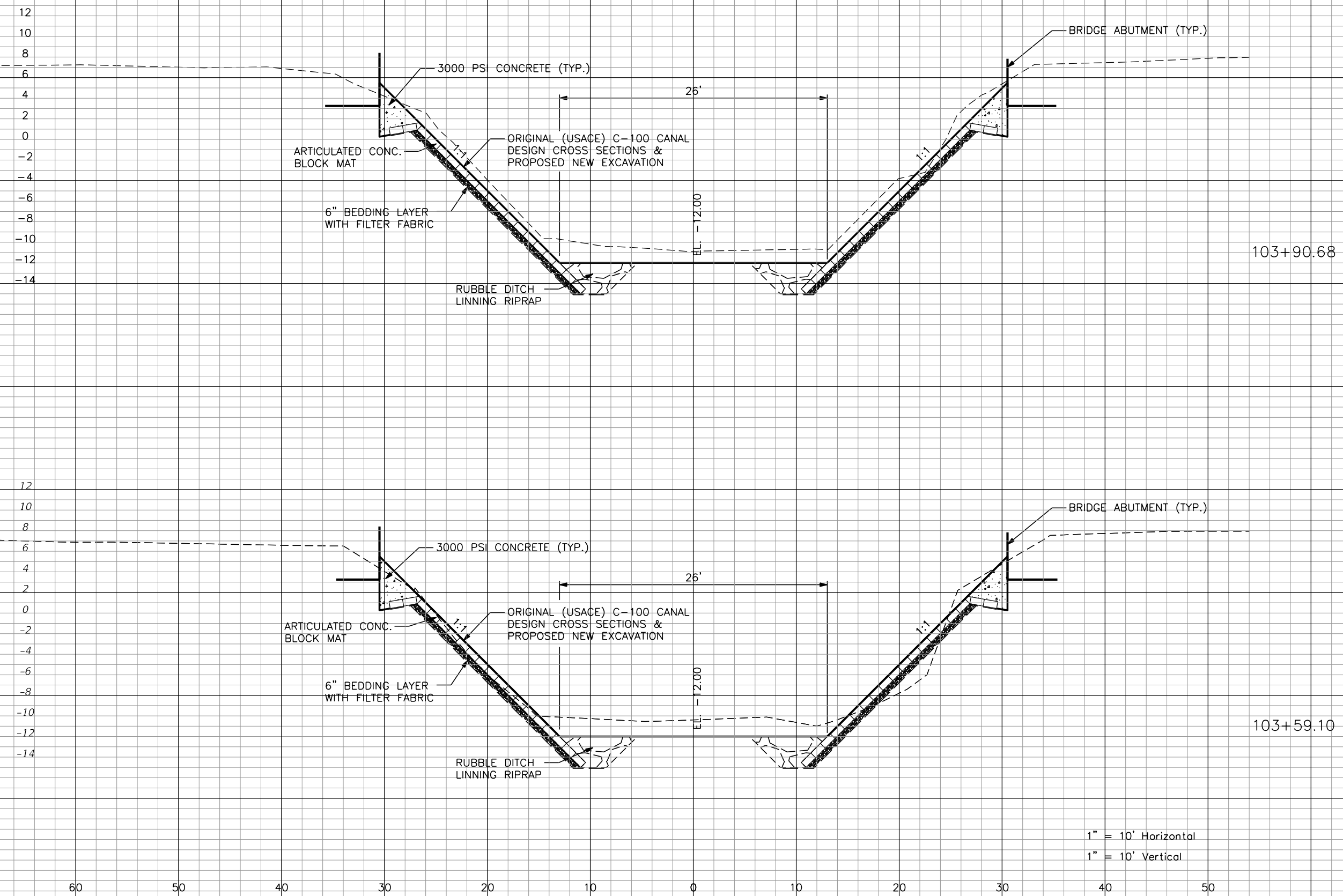
MIAMI-DADE
COUNTY

DEPARTMENT OF TRANSPORTATION
AND PUBLIC WORKS
HIGHWAY DIVISION
STEPHEN P. CLARK CENTER
111 NW 1 ST
MIAMI, FLORIDA 33128

DRAINAGE DETAILS

Revised Sheets for Addendum no. 2

0:\21030_SW 87 Bridge over Canal C-100\CADD\drainage\DRXSRD02.dgn
Jcruzgarcia
9:53:03 AM
6/24/2022



Regular		Exc.	Embankment	
A	V	A	V	
175.2	185.3	0	2.4	
141.7	97.3	6.2	2.4	

REVISIONS					
DATE	BY	DESCRIPTION	DATE	BY	DESCRIPTION
6/23/2022	JC	REVISED QUANTITIES			

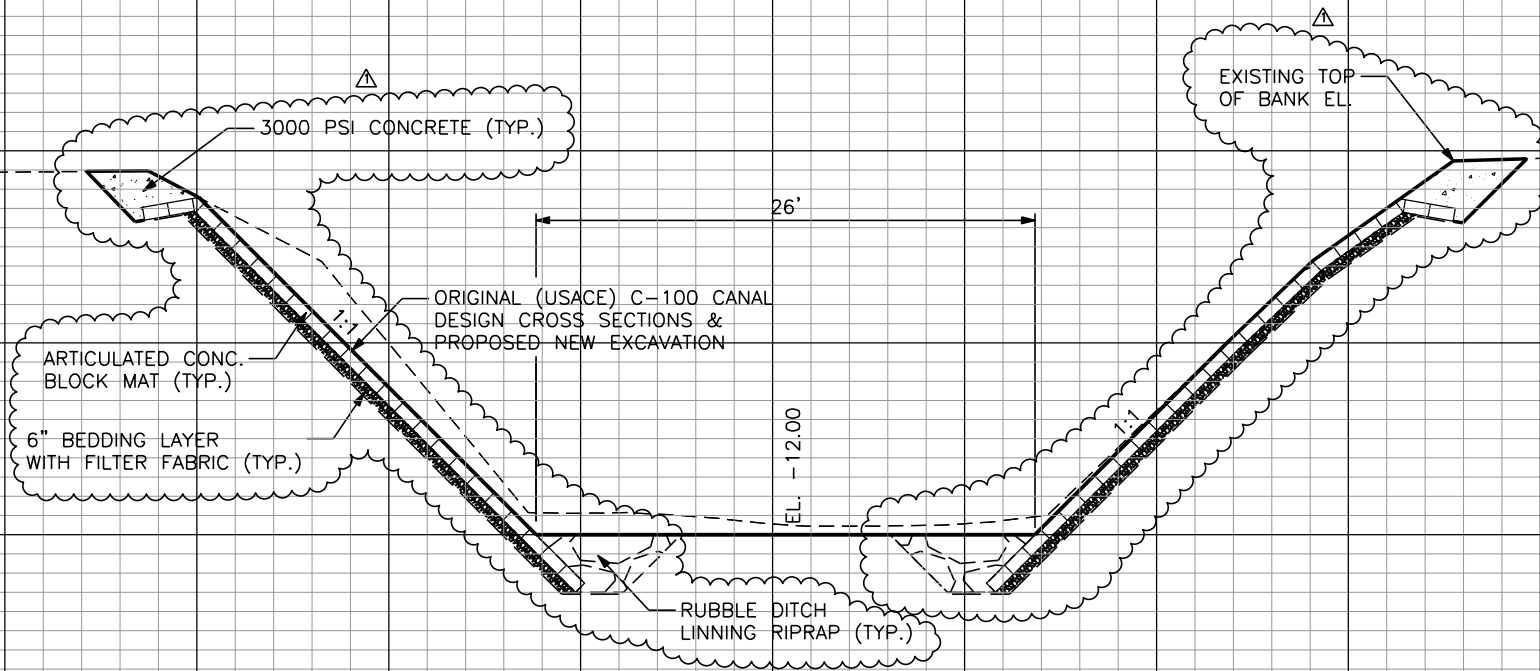
R.J. Behar & Company, Inc.
Engineers • Planners
6861 SW 196 Avenue, Suite 302
Pembroke Pines, Florida 33332

DESIGNED BY	NAME	DATE	DRAWN BY	NAME	DATE
CHECKED BY			CHECKED BY		
SUPERVISED BY					

DEPARTMENT OF TRANSPORTATION
AND PUBLIC WORKS
HIGHWAY DIVISION
STEPHEN P. CLARK CENTER
111 NW 1 ST
MIAMI, FLORIDA 33128

CANAL CROSS
SECTIONS

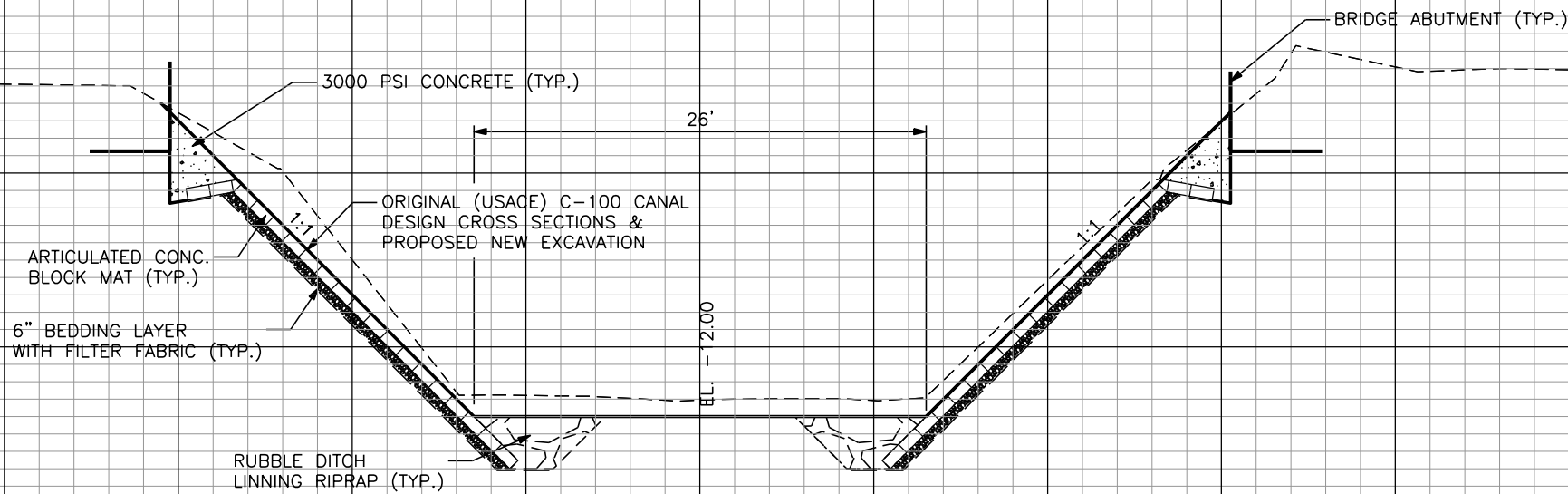
12
10
8
6
4
2
0
-2
-4
-6
-8
-10



104+47.26
END FULL SECTION

Regular		Exc.	Embankment	
A	V	A	V	
168.6	159.4	0	0	

14
12
10
8
6
4
2
0
-2
-4
-6
-8
-10
-12
-14



104+22.26

175.7	205.2	0	0	
-------	-------	---	---	--

1" = 10' Horizontal
1" = 10' Vertical

REVISIONS

DATE	BY	DESCRIPTION	DATE	BY	DESCRIPTION	DATE	BY	DESCRIPTION
6/23/2022	JC	REVISED QUANTITIES AND REVETMENT LIMITS						



R.J. Behar & Company, Inc.
Engineers • Planners
6861 SW 196 Avenue, Suite 302
Pembroke Pines, Florida 33332

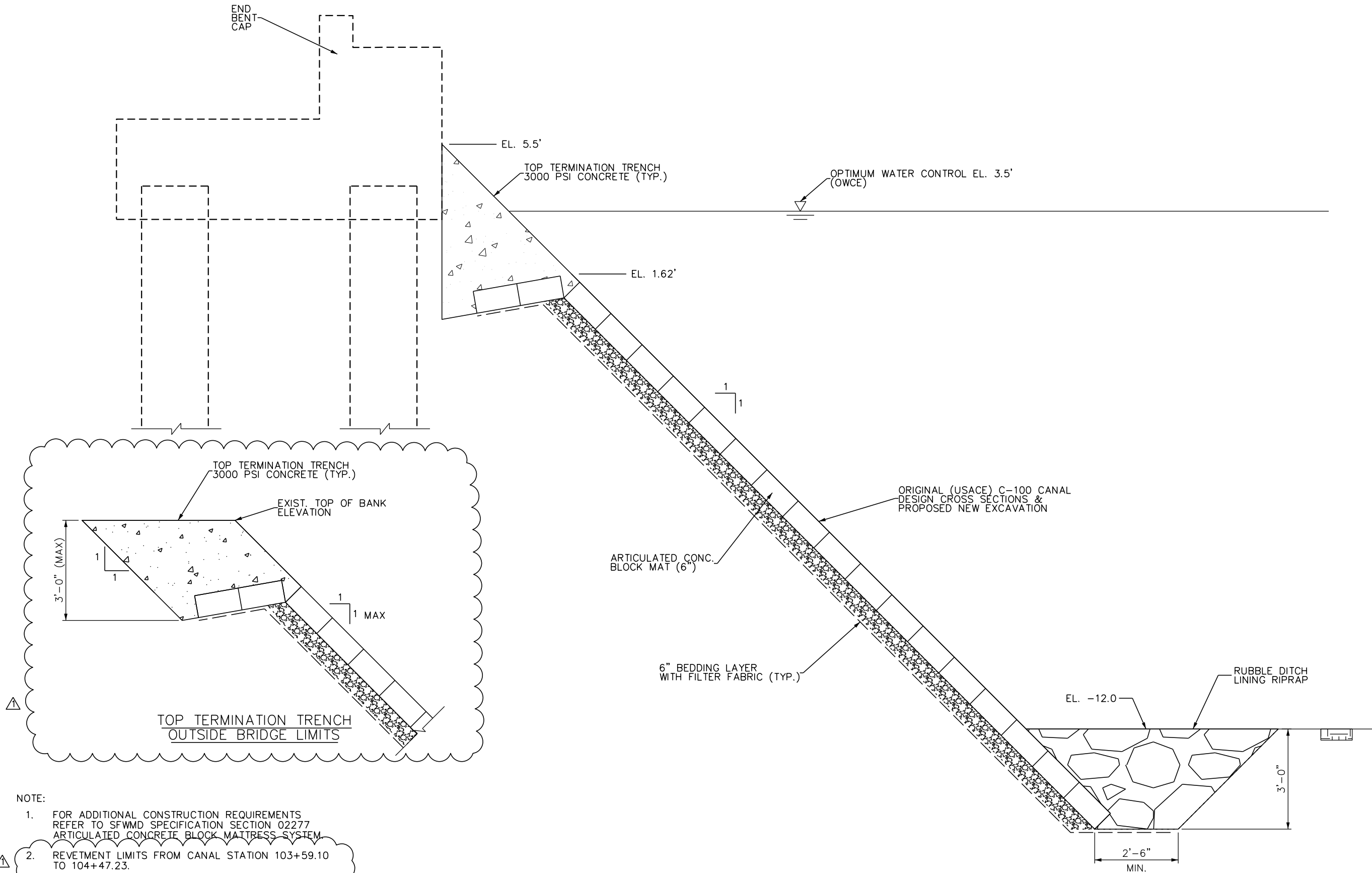
DESIGNED BY	NAME	DATE	DRAWN BY	NAME	DATE
CHECKED BY			CHECKED BY		
SUPERVISED BY					



DEPARTMENT OF TRANSPORTATION
AND PUBLIC WORKS
HIGHWAY DIVISION
STEPHEN P. CLARK CENTER
111 NW 1 ST
MIAMI, FLORIDA 33128

CANAL CROSS
SECTIONS

6/23/2022 1:30:55 PM 0:\21030_SW 87 Bridge over Canal C-100\CADD\roadway\BIRipRapRubble02.dgn jcrzgarcia



- NOTE:
- FOR ADDITIONAL CONSTRUCTION REQUIREMENTS REFER TO SFWMD SPECIFICATION SECTION 02277 ARTICULATED CONCRETE BLOCK MATTRESS SYSTEM.
 - REVTMENT LIMITS FROM CANAL STATION 103+59.10 TO 104+47.23.

REVISIONS							
DATE	BY	DESCRIPTION	DATE	BY	DESCRIPTION	DATE	BY
6/23/22	JC	ADDED NOTE AND TERMINATION TRENCH DETAIL					



R.J. Behar & Company, Inc.
Engineers • Planners
6861 SW 196 Avenue, Suite 302
Pembroke Pines, Florida 33332

DESIGNED BY	NAME	DATE	DRAWN BY	NAME	DATE
CHECKED BY			CHECKED BY		
SUPERVISED BY:					

MIAMI-DADE
COUNTY

DEPARTMENT OF TRANSPORTATION
AND PUBLIC WORKS
HIGHWAY DIVISION
STEPHEN P. CLARK CENTER
111 NW 1 ST
MIAMI, FLORIDA 33128

SLOPE PROTECTION
DETAIL

6/13/2022 5:35:28 PM O:\21030_SW 87 Bridge over Canal C-100\CADD_struct.B1sumOfQuantities01.dgn jcrzgarcia

SUMMARY OF QUANTITIES					
SECTION	PAY ITEM NO.	PAY ITEM DESCRIPTION	UNIT	TOTAL	
				P	F
FOUNDATION	455-113-24	AUGER CAST PILES FOR BRIDGES	LF	1219	1
	455-147-1	THERMAL INTEGRITY TESTING, UP TO 4' SHAFT DIAMETER	EA	2	
SUBSTRUCTURE	400-4-5	CONCRETE CLASS IV, BRIDGE SUBSTRUCTURE	CY	161	
	415-1-5	REINFORCING STEEL - BRIDGE SUBSTRUCTURE	LB	25956	
	548-12	RETAINING WALL SYSTEM, PERMANENT, EXCLUDING BARRIER	SF	271	
APPROACH SLABS	400-2-10	CONCRETE CLASS II, APPROACH SLABS	CY	167	
	415-1-9	REINFORCING STEEL - APPROACH SLABS	LB	26924	
SUPERSTRUCTURE	400-4-47	CONCRETE CLASS IV, CAST - IN - PLACE TOPPING WITH SHRINKAGE REDUCING ADMIXTURE	CY	164	
	400-7-1	BRIDGE DECK GROOVING	SY	162	
	400-9-1	BRIDGE DECK PLANING	SY	96	
	400-148	PLAIN NEOPRENE BEARING PADS	CF	6.2	
	415-1-4	REINFORCING STEEL - BRIDGE SUPERSTRUCTURE	LB	21812	
	450-8-24	PRESTRESSED BEAM: FLORIDA SLAB BEAM, BEAM DEPTH 18", WIDTH 53"	LF	957	
	458-1-11	BRIDGE DECK EXPANSION JOINT, NEW CONSTRUCTION, F&I POURED JOINT WITH BACKER ROD	LF	127	
RAILING/BARRIERS	515-4-1	BULLET RAIL, SINGLE RAIL	LF	198	
	521-5-4	CONCRETE TRAFFIC RAILING - BRIDGE, 32" VERTICAL FACE	LF	200	
UTILITY PROTECTION	400-2-5	CONCRETE CLASS II	CY	242	
	415-1-4	REINFORCING STEEL	LB	6102	
MISCELLANEOUS	400-10-SP	DECORATIVE URN PLANTER	EA	4	
	415-1-4	REINFORCING STEEL (SUPER STRUCTURE)	LB	1013	
	400-2-10	CONCRETE CLASS II, URN CONCRETE PAD	CY	8.6	

PAY ITEM NOTES:

- 400-10-SP INCLUDES THE COST OF 4 ADHESIVE ANCHOR PER EACH DECORATIVE URN PLANTER.
- 400-2-5 INCLUDES THE COST OF A 1/4" PLYWOOD AND 6" CARDBOARD .
- 1 521-5-4 CONCRETE TRAFFIC RAILING SHALL INCLUDE SHOULDER BARRIER OUTSIDE THE BRIDGE AND ALL CONSTRUCTION INCIDENTAL TO THE BARRIER WALLS.
- 455-113-24 INCLUDES THE COST OF ONE STATIC LOAD TEST PILE (53') AND ALL TEST CONSTRUCTION INCIDENTALS.

R E V I S I O N S								
DATE	BY	DESCRIPTION	DATE	BY	DESCRIPTION	DATE	BY	DESCRIPTION
6/13/22	JC	1 ADDED PAY ITEM NOTE & REVISED QUANTITY						



R.J. Behar & Company, Inc.
Engineers • Planners
6861 SW 196 Avenue, Suite 302
Pembroke Pines, Florida 33332

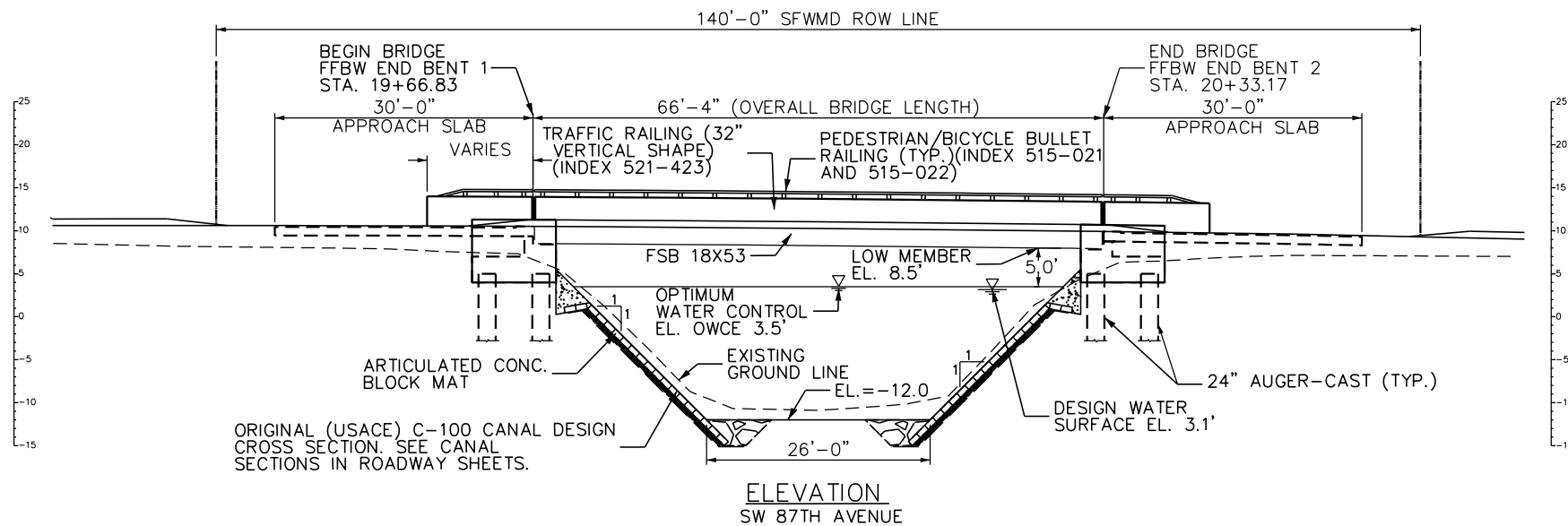
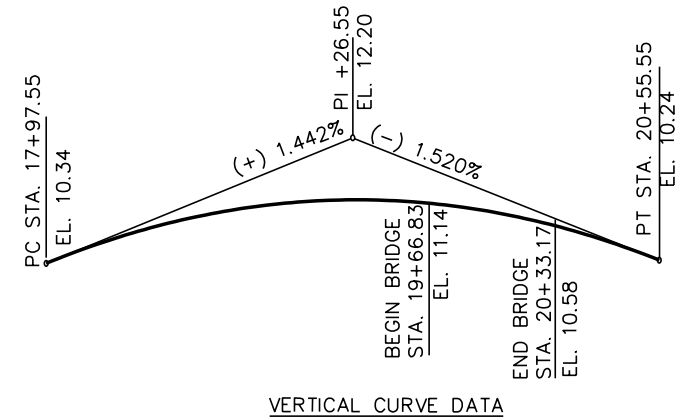
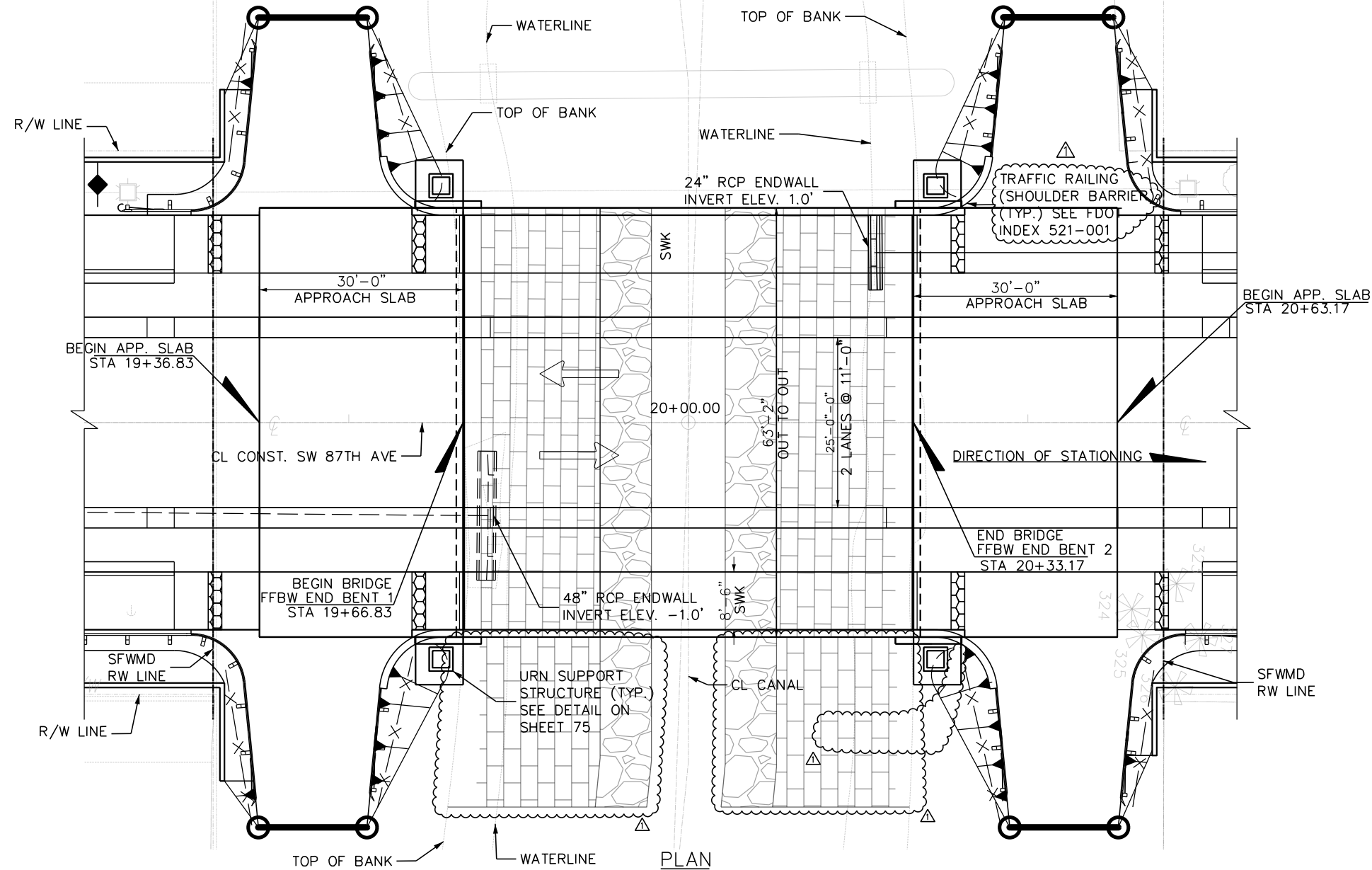
DESIGNED BY	NAME	DATE	DRAWN BY	NAME	DATE
CHECKED BY			CHECKED BY		
SUPERVISED BY:					

MIAMI-DADE COUNTY



DEPARTMENT OF TRANSPORTATION
AND PUBLIC WORKS
HIGHWAY DIVISION
STEPHEN P. CLARK CENTER
111 NW 1 ST
MIAMI, FLORIDA 33128

6/23/2022 2:16:25 PM 0:\21030_SW 87 Bridge over Canal C-100\CADD\struct\B1PlanElev01.dgn jcrzgarcia



REVISIONS							
DATE	BY	DESCRIPTION	DATE	BY	DESCRIPTION	DATE	BY
6/23/22	JC	REVISED REVETMENT LIMIT & REMOVED LABELS					



R.J. Behar & Company, Inc.
Engineers • Planners
6861 SW 196 Avenue, Suite 302
Pembroke Pines, Florida 33332

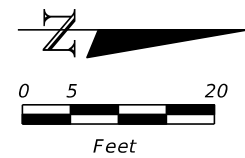
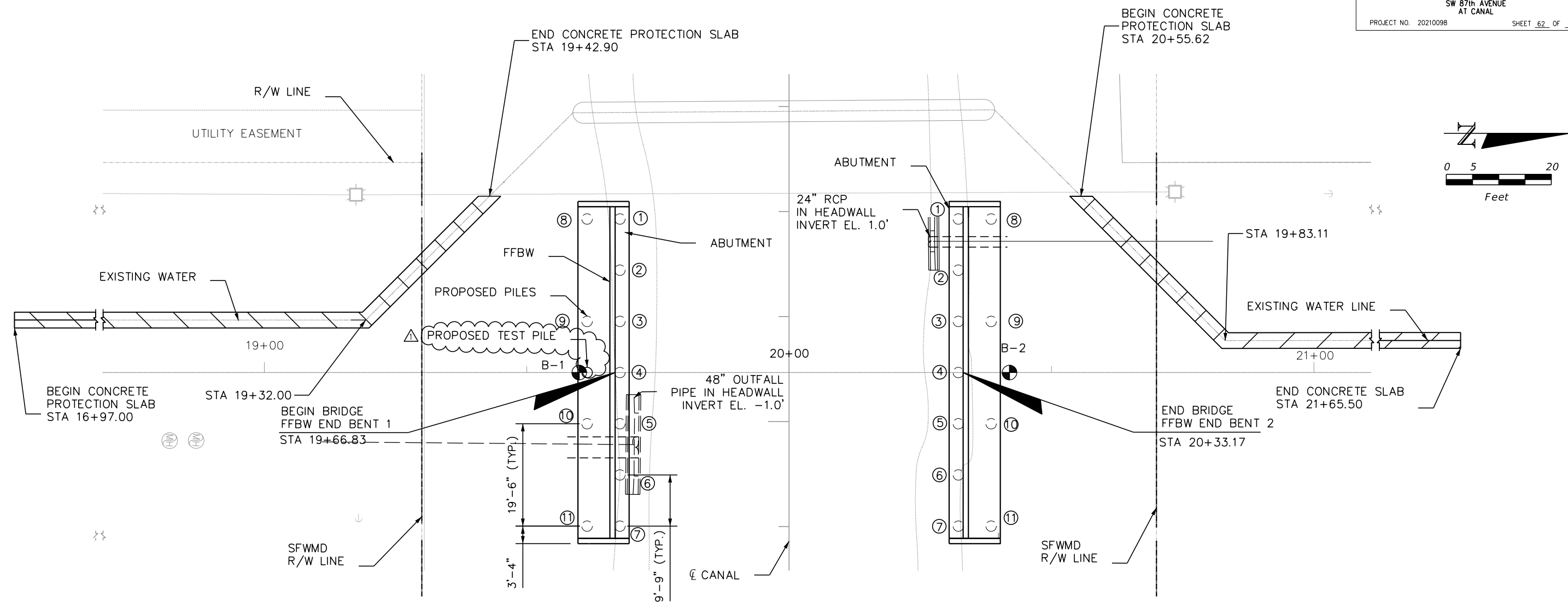
DESIGNED BY	NAME	DATE	DRAWN BY	NAME	DATE
CHECKED BY			CHECKED BY		
SUPERVISED BY					



DEPARTMENT OF TRANSPORTATION
AND PUBLIC WORKS
HIGHWAY DIVISION
STEPHEN P. CLARK CENTER
111 NW 1 ST
MIAMI, FLORIDA 33128

PLAN AND ELEVATION

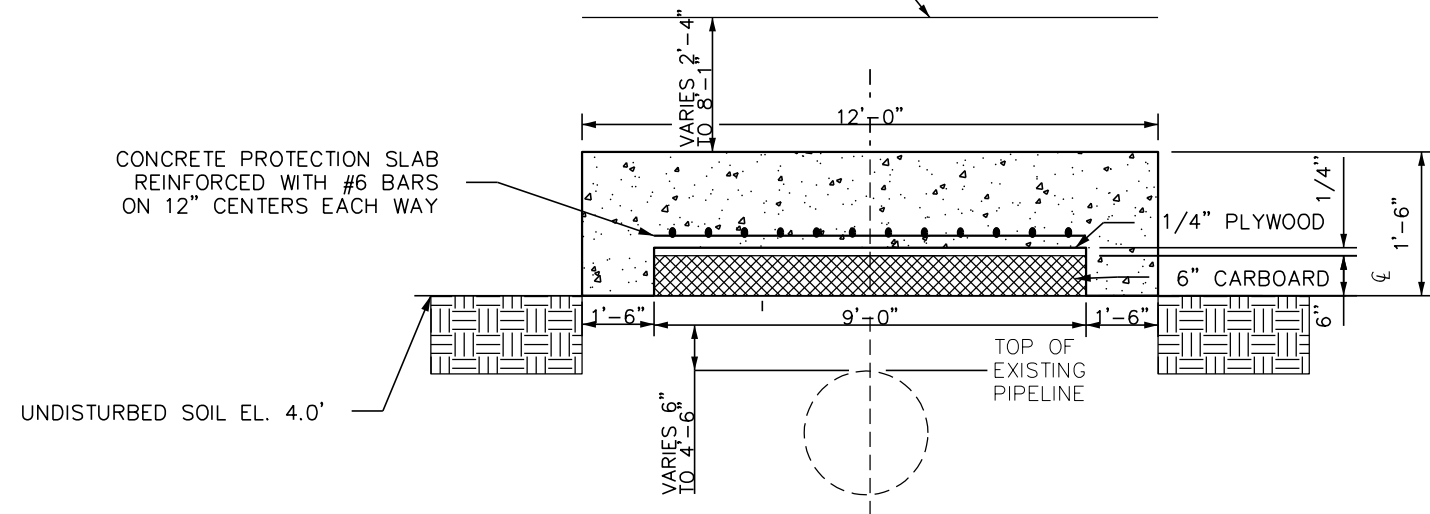
6/13/2022 5:37:15 PM O:\21030_SW 87 Bridge over Canal C-100\CADD\struct\BIFoundLay01.dgn jcrzgarcia



PLAN

LEGEND:

- DENOTES PROPOSED 24" DIAMETER AUGER-CAST PILE (PLUMB)
- △ DENOTES PROPOSED 24" DIAMETER AUGER-CAST TEST PILE
- FFBW INDICATES FRONT FACE OF BACKWALL
- INDICATES APPROXIMATE BORING LOCATION



UTILITY CONCRETE PROTECTION SLAB DETAIL

REVISIONS							
DATE	BY	DESCRIPTION	DATE	BY	DESCRIPTION	DATE	BY
6/13/22	JC	ADDED TEST PILE LOCATION AND REVISED LEGEND					

R.J. Behar & Company, Inc.
Engineers • Planners
6861 SW 196 Avenue, Suite 302
Pembroke Pines, Florida 33332

DESIGNED BY	CHECKED BY	NAME	DATE	DRAWN BY	CHECKED BY	NAME	DATE
SUPERVISED BY:							

DEPARTMENT OF TRANSPORTATION AND PUBLIC WORKS HIGHWAY DIVISION
STEPHEN P. CLARK CENTER
111 NW 1 ST
MIAMI, FLORIDA 33128

FOUNDATION LAYOUT

6/14/2022 9:04:55 AM 0:\21030_SW 87 Bridge over Canal C-100\CADD\struct\BIPileData01.dgn jcrzgarcia

AUGER CAST PILE DATA TABLE																	
Installation Criteria							Design Criteria										Pile Cut-Off Elev. (Feet)
Found Location	Pile Diameter (In.)	Axial Compression Test Load (Tons)	Uplift Resist. (Tons)	Min. Top Elev. (Feet) (See Note 1)	Min. Rock Socket (Feet)	Minimum Required Pile Length (Feet)	Factored Designed Load (Tons)	Service Design Lateral Load (Tons)	Factored Designed Uplift Load (Tons)	Down Drag (Tons)	Total Scour Resist. (Tons)	Net Scour Resistance (Tons)	Long Term Scour Elev. (Feet)	100-Year Scour Elev. (Feet)	Factor of Safety Compression (Resist. Factor)	Factor of Safety Uplift	
End Bent 1	24	358	N/A	-48	10	53	179	5	N/A	N/A	N/A	N/A	N/A	N/A	2.0 (0.50)	N/A	5
End Bent 2	24	358	N/A	-48	10	53	179	5	N/A	N/A	N/A	N/A	N/A	N/A	2.0 (0.50)	N/A	5

AUGER CAST PILE FOUNDATION NOTES:

1. THE 28-DAY COMPRESSIVE STRENGTH OF THE GROUT USED IN THE PILES SHOULD BE AT LEAST 5,500 PSI.
2. AUGERED PILE SHALL REMAIN PLUMB WITHIN ONE-EIGHTH OF THE PILE DIAMETER.
3. CENTERS OF VERTICAL ACIPS (AUGER CAST-IN-PLACE) SHALL BE LOCATED WITH AN ACCURACY OF THREE (3) INCHES AT THE CUT-OFF ELEVATION FOR GROUP PILES AND ONE (1) INCH FOR ISOLATED PILES. OUT FOR PLUMBNESS OF THE ACIP PILES SHALL BE LIMITED TO TWO (2) INCHES PER 10 FEET FROM VERTICAL.
4. THE ACIP INSTALLATION AUGER SHALL BE RAISED IN A REASONABLY SMOOTH MANNER AT A RATE THAT DOES NOT EXCEED THE INJECTION CAPACITY OF THE PUMP. IF THE AUGER IS RAISED IN A RAPID OR ERRATIC MANNER, OR SUDDEN DROP IN THE GROUT RETURN OR PUMPING PRESSURE IS OBSERVED, THE AUGER SHOULD BE ADVANCED AT LEAST FIVE FEET BELOW THE DEPTH WHERE THE HEAD/PRESSURE DROP OCCURRED. PUMPING SHALL CONTINUE WHILE THE AUGER IS ROTATED TO THE REQUIRED DEPTH. WHEN THE RE-AUGERING OPERATION IS COMPLETED, THE NORMAL PUMPING AND RAISING PROCESS SHALL BE CONTINUED.
5. A GROUT HEAD OF A LEAST 10 FEET ABOVE THE TIP OF THE AUGER SHALL BE MAINTAINED THROUGHOUT THE PUMPING PROCESS.
6. THE GROUT TAKE FOR EACH PILE SHALL BE AT LEAST 10 PERCENT GREATER THAN THE THEORETICAL VOLUME OF THE ACIP. IF, IN THE OPINION OF THE ACIP INSPECTOR, LESS GROUT IS PLACED THAN REQUIRED FOR ANY INTERVAL FIVE FEET OR LESS, THE ACIP SHALL BE REINSTALLED BY ROTATING THE AUGER TO A DEPTH FIVE FEET BELOW THE BOTTOM OF THE INTERVAL FOLLOWED BY CONTROLLED REMOVAL AND GROUT INJECTION.
7. IT IS ADVISED THAT THE CONTRACTOR SHALL BID GROUT TAKES UP TO AN AVERAGE OF 25% TO 50% OF THE THEORETICAL VOLUME OF THE ACIP (FOR THE ENTIRE PROJECT) AND PROVIDE ADDITIONAL PRICING FOR CONCRETE VOLUMES THAT VARY FROM AN AVERAGE OF 1.25 UP TO 1.50 GROUT FACTOR FOR THE OVERALL PROJECT.
8. ADJACENT ACIPS SHALL NOT BE PLACED CLOSED THAN 4 FEET EDGE-TO-EDGE UNTIL THE GROUT IN THE ACIPS HAS SET OVERNIGHT.
9. THE ACIP CONTRACTOR SHALL INSTALL REINFORCEMENT STEEL IN THE ACIPS IN ACCORDANCE WITH THE DESIGN DRAWINGS WHILE THE GROUT IS FLUID. REINFORCING STEEL SHOULD BE PROVIDED WITH SPACERS TO ASSURE THAT REINFORCING CAGES REMAIN CENTERED AND ARE NOT ALLOWED TO FALL AGAINST THE SIDES OF THE ACIP SHAFT. STEEL REINFORCEMENT SHOULD BE PROVIDED WITH A MINIMUM OF 3 INCHES OF SIDE CLEARANCE.
10. WHERE OBSTRUCTIONS ARE ENCOUNTERED WHICH PREVENT THE ADVANCEMENT OF THE REINFORCING STEEL, THE CONTRACTOR SHOULD REMOVE THE REINFORCING CAGE, RE-DRILL AND RE-GROUT THE HOLE TO A DEPTH OF AT LEAST FIVE FEET BELOW THE TIP ELEVATION AT WHICH THE OBSTRUCTION WAS ENCOUNTERED BEFORE REINSERTING THE STEEL. ADDITIONALLY, ACIP PILES WHICH LOSE GROUT HEAD OR WHICH SETTLE EXCESSIVELY SUBSEQUENT TO AUGER EXTRACTION WILL NEED TO BE RE-DRILLED, OR REPLACED IF REBAR CAGES CANNOT BE EXTRACTED.
11. REINFORCEMENT CAGES SHALL NOT BE ADVANCED TO THE DESIRED TIP ELEVATION USING BACKHOE OR OTHER MECHANICAL EQUIPMENT PUSHING ON THE TOP OF THE REBAR CAGE. SUCH RE-DRILL SHOULD BE AT THE CONTRACTOR'S EXPENSE.

AUGER CAST PILE TESTING AND INSPECTION NOTES:

1. ONE (STATIC) COMPRESSION LOAD TEST SHALL BE PERFORMED FOR EACH PILE DIAMETER AND TIP ELEVATION.
2. PILE INSTALLATION SHALL BE WITNESSED AND LOGGED BY THE INSPECTOR. INSPECTOR SHALL CONFIRM SHAFT PLUMBNESS, COMPLIANCE WITH DEPTH REQUIREMENTS CONTINUITY OF GROUTING, AND REINFORCING DETAILS: INSPECTOR'S LOG SHALL INCLUDE THE PRECEDING AND ALL OTHER PERTINENT DATA INCLUDING PILE IDENTIFICATION. GIVE 48HR NOTIFICATION TO COUNTY AND INSPECTION TEAM.

R E V I S I O N S								
DATE	BY	DESCRIPTION	DATE	BY	DESCRIPTION	DATE	BY	DESCRIPTION
6/13/22	JC	⚠️ ADDED NOTE FOR PILE TESTING						



R.J. Behar & Company, Inc.
Engineers • Planners
6861 SW 196 Avenue, Suite 302
Pembroke Pines, Florida 33332

	NAME	DATE		NAME	DATE
DESIGNED BY			DRAWN BY		
CHECKED BY			CHECKED BY		
SUPERVISED BY:					

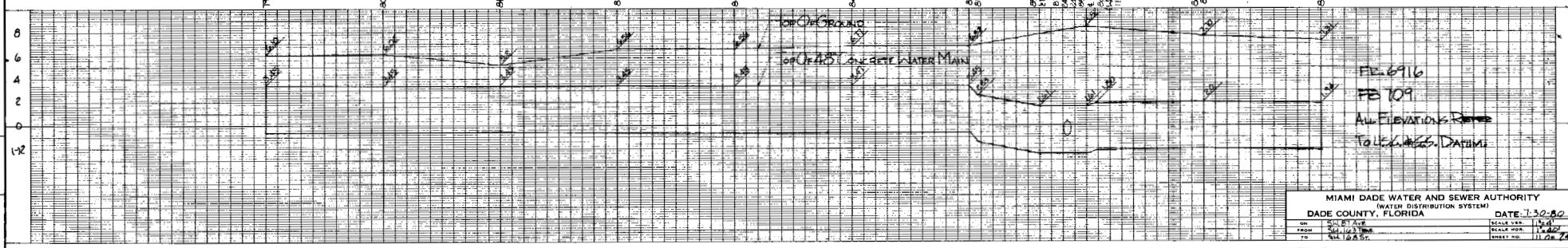
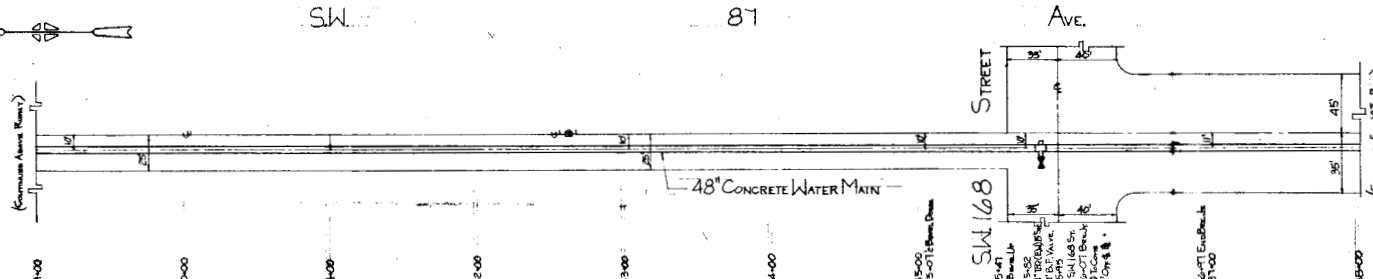
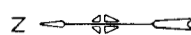
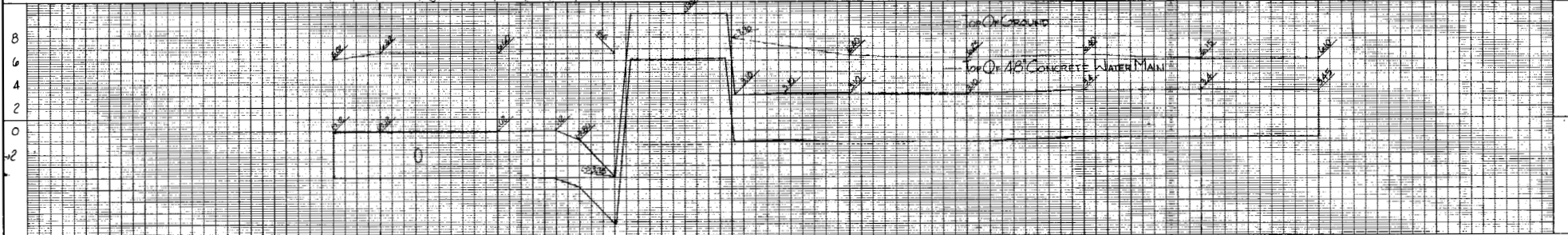
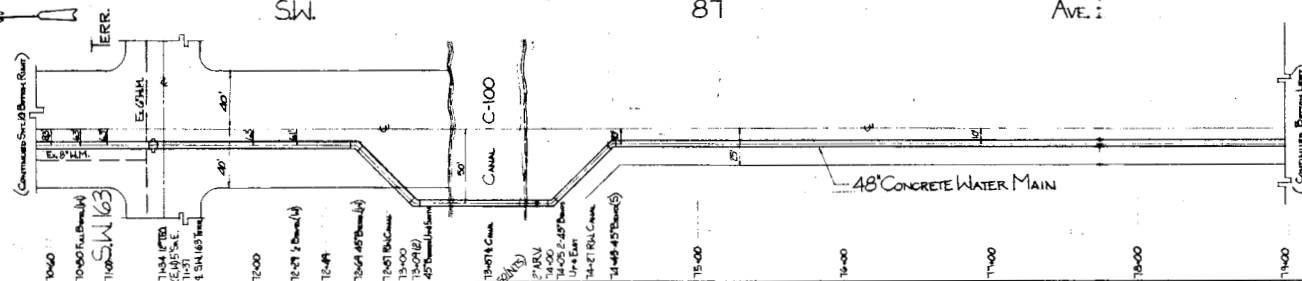
MIAMI-DADE
COUNTY



DEPARTMENT OF TRANSPORTATION
AND PUBLIC WORKS
HIGHWAY DIVISION
STEPHEN P. CLARK CENTER
111 NW 1 ST
MIAMI, FLORIDA 33128

48in Water Main for Addendum No. 2

DADE COUNTY
SEC. 21-55-40



FILE 6916
FD 109
ALL ELEVATIONS REFERRED
TO L&S DATA

MIAMI DADE WATER AND SEWER AUTHORITY (WATER DISTRIBUTION SYSTEM)			
DADE COUNTY, FLORIDA		DATE: 1-30-80	
NO.	100-87-109	SCALE	1\"/>

E-8807



RESIDENTIAL COMMUNITY
SPEED LIMIT 25MPH

LEGEND

ROW	RIGHT-OF-WAY	ANCHOR
EOP	EDGE OF PAVEMENT	SPAN GUY WIRE
CL	CENTER LINE	TRANSMISSION LINE
	PROPOSED TRANS. SPUN CONCRETE POLE	NEW CONDUCTOR LINE
	EXISTING TRANS. SPUN CONCRETE POLE	
	EXISTING TRANS. CONCRETE POLE	
	EXISTING TRANS. WOOD POLE	



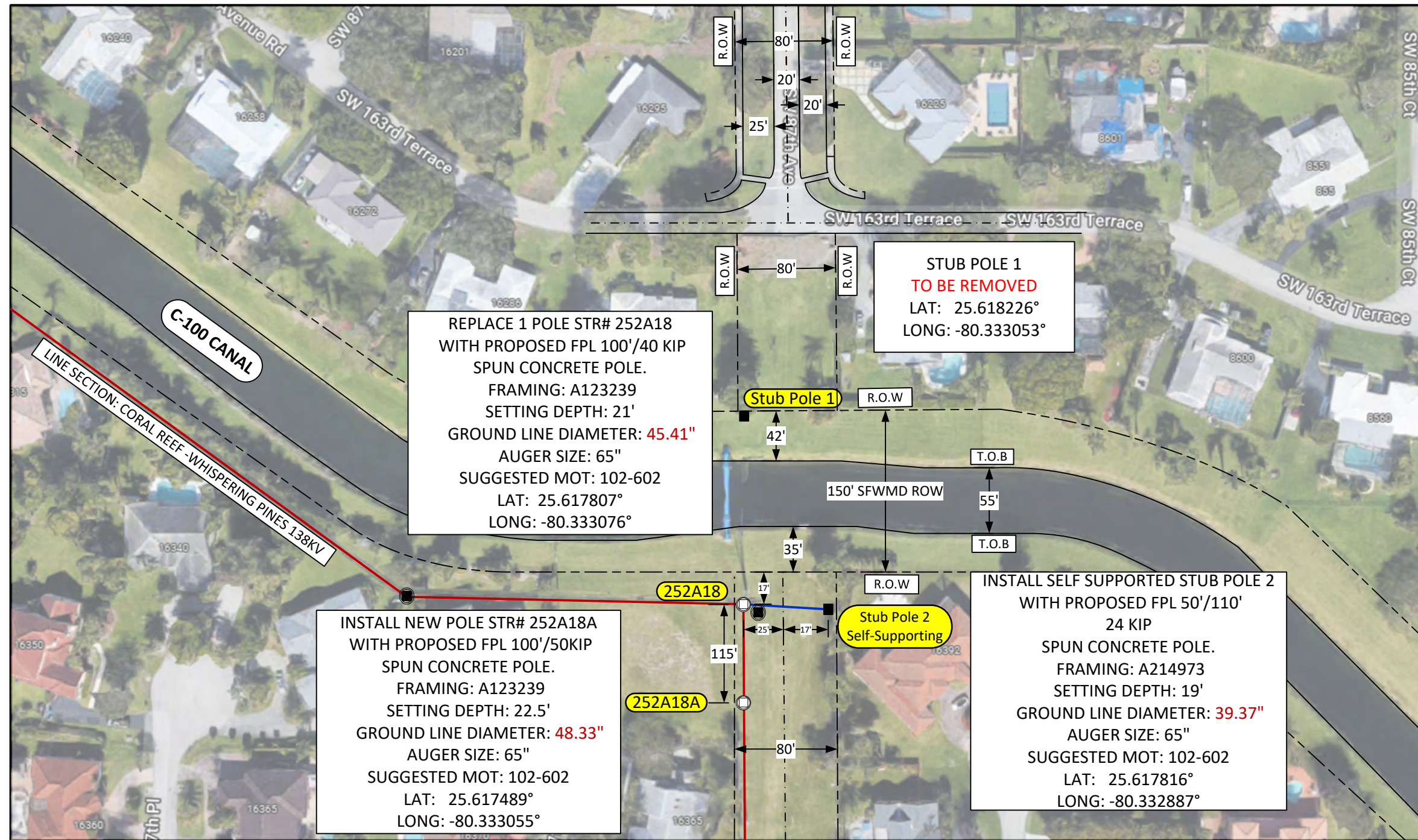
ALL POLE LOCATIONS WILL COMPLY
WITH ADA REQUIREMENTS FOR
WHEEL CHAIR ACCESS.

LOC/CITY: PALMETTO BAY SEC:27 TWN:55 RNG:40

PERMIT REQ'D	CITY R/W	COUNTY R/W	FDEP	FDOT XING	FAA
	SFWMD	RR XING	DR DIST.	ACOE	DERM

<input type="checkbox"/> 69kv	<input type="checkbox"/> 115kv	<input checked="" type="checkbox"/> 138kv
<input type="checkbox"/> 230kv	<input type="checkbox"/> 500kv	<input type="checkbox"/> CONTAMINATION

FPL	IO#: T00000030806		
COUNTY: MIAMI-DADE COUNTY			
LINE NAME: DAVIS-PRINCETON #1 138KV			
SECTION NAME: CORAL REEF TAP-WHISPERING PINES			
SCOPE: C-100 - CROSSING REPLACE EXISTING CONCRETE POLE STR#252A18 AND STUB POLE			
ENG. ANNA BRADLEY		SCALE: N.T.S	DATE: 4/28/2022
DRAWN BY:	MIKE ROLLE		DWG # 1 OF 3



LEGEND

ROW	RIGHT-OF-WAY	ANCHOR
EOP	EDGE OF PAVEMENT	SPAN GUY WIRE
CL	CENTER LINE	TRANSMISSION LINE
	PROPOSED TRANS. SPUN CONCRETE POLE	NEW CONDUCTOR LINE
	EXISTING TRANS. SPUN CONCRETE POLE	
	EXISTING TRANS. CONCRETE POLE	
	EXISTING TRANS. WOOD POLE	



ALL POLE LOCATIONS WILL COMPLY WITH ADA REQUIREMENTS FOR WHEEL CHAIR ACCESS.

LOC/CITY: PALMETTO BAY SEC:27 TWN:55 RNG:40

PERMIT REQ'D	CITY R/W	COUNTY R/W	FDEP	FDOT XING	FAA
	SWFMD	RR XING	DR DIST.	ACOE	DERM

<input type="checkbox"/> 69kv	<input type="checkbox"/> 115kv	<input checked="" type="checkbox"/> 138kv
<input type="checkbox"/> 230kv	<input type="checkbox"/> 500kv	<input type="checkbox"/> CONTAMINATION

FPL

IO#: T00000030806

COUNTY: MIAMI-DADE COUNTY
 LINE NAME: DAVIS-PRINCETON #1 138KV
 SECTION NAME: CORAL REEF TAP-WHISPERING PINES

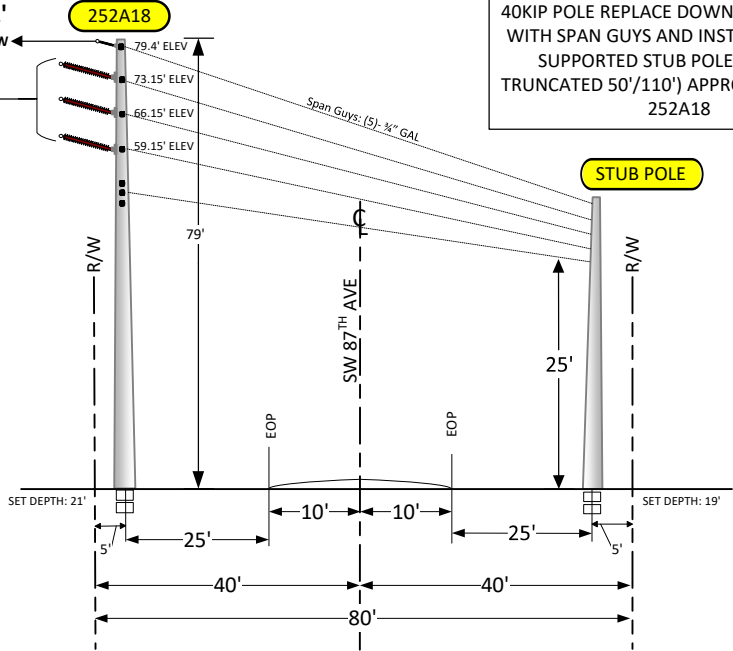
SCOPE: C-100 - CROSSING REPLACE EXISTING CONCRETE POLE STR#252A18 AND STUB POLE

ENG. ANNA BRADLEY SCALE: N.T.S. DATE: 4/28/2022
 DRAWN BY: MIKE ROLLE DWG # 2 OF 3

FPL Pole Locations for Addendum No. 2

SPUN CONCRETE POLE
FRAMING: A123239
SETTING DEPTH: 21'

Lat: 25.617807
Long: -80.333076



REPLACE STRUCTURE 252A18 WITH 100' 40KIP POLE REPLACE DOWN GUYS TO EAST WITH SPAN GUYS AND INSTALL NEW SELF SUPPORTED STUB POLE (24 KIP TRUNCATED 50'/110') APPROX 70' EAST OF 252A18

SPUN CONCRETE POLE
FRAMING: A214973
SETTING DEPTH: 19'
SUGGESTED MOT: 102-602
Lat: 25.618226°
Long: -80.333053°

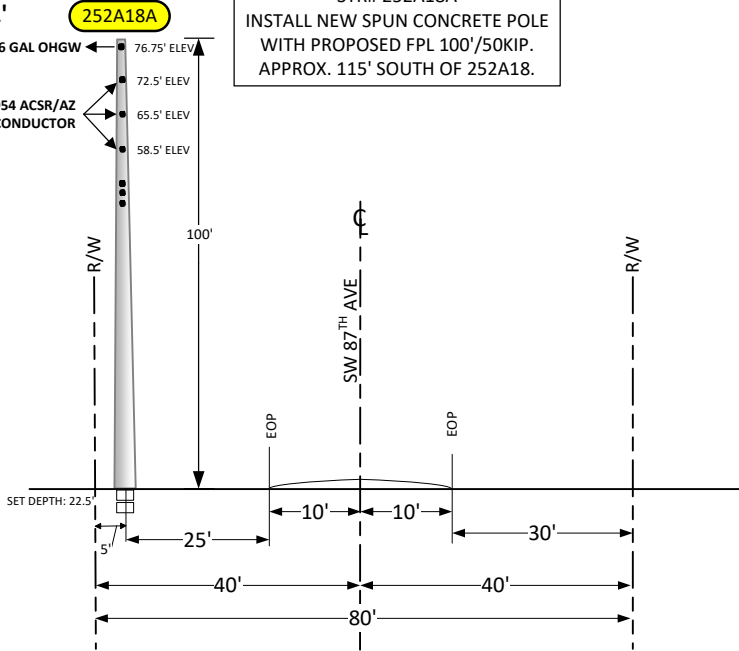


REPLACE STRUCTURE 252A18 WITH 100' 40KIP POLE REPLACE DOWN GUYS TO EAST WITH SPAN GUYS AND INSTALL NEW SELF SUPPORTED STUB POLE (24 KIP TRUNCATED 50'/110') APPROX 70' EAST OF 252A18

NOTE:
CLEARANCES SHOWN ARE BASED ON
CONDUCTORS AT MAXIMUM SAG &
OPERATING TEMPERATURE

FPL 100'/50KIP
SPUN CONCRETE POLE
FRAMING: A123239
SETTING DEPTH: 21'

Lat: 25.617489
Long: -80.333055



STR# 252A18A
INSTALL NEW SPUN CONCRETE POLE
WITH PROPOSED FPL 100'/50KIP.
APPROX. 115' SOUTH OF 252A18.



STR# 252A18A
INSTALL NEW SPUN CONCRETE POLE
WITH PROPOSED FPL 100'/50KIP.
APPROX. 115' SOUTH OF 252A18.

LEGEND

ROW	RIGHT-OF-WAY	ANCHOR
EOP	EDGE OF PAVEMENT	SPAN GUY WIRE
CL	CENTER LINE	TRANSMISSION LINE
PROPOSED TRANS. SPUN CONCRETE POLE	NEW CONDUCTOR LINE	
EXISTING TRANS. SPUN CONCRETE POLE		
EXISTING TRANS. CONCRETE POLE		
EXISTING TRANS. WOOD POLE		



ALL POLE LOCATIONS WILL COMPLY
WITH ADA REQUIREMENTS FOR
WHEEL CHAIR ACCESS.

LOC/CITY: PALMETTO BAY SEC:27 TWN:55 RNG:40

PERMIT REQ'D	CITY R/W	COUNTY R/W	FDEP	FDOT XING	FAA
	SFWMD	RR XING	DR DIST.	ACOE	DERM

<input type="checkbox"/> 69kv	<input type="checkbox"/> 115kv	<input checked="" type="checkbox"/> 138kv
<input type="checkbox"/> 230kv	<input type="checkbox"/> 500kv	<input type="checkbox"/> CONTAMINATION

FPL IO#: T00000030806

COUNTY: MIAMI-DADE COUNTY		
LINE NAME: DAVIS-PRINCETON #1 138KV		
SECTION NAME: CORAL REEF TAP-WHISPERING PINES		
SCOPE: C-100 - CROSSING REPLACE EXISTING CONCRETE POLE STR#252A18 AND STUB POLE		
ENG. ANNA BRADLEY	SCALE: N.T.S	DATE: 4/28/2022
DRAWN BY: MIKE ROLLE	DWG # 3 OF 3	